



## **Field Response of the Twig Beetle, *Pityophthorus pubescens*, to the Aggregation Pheromone, (E)-( )-pityol, is not Inhibited by (E)-(-)-pityol, and Evidence of Monogyny**

Authors: López, Sergio, Iturrondobeitia, Juan Carlos, and Goldarazena, Arturo

Source: Journal of Insect Science, 13(15) : 1-9

Published By: Entomological Society of America

URL: <https://doi.org/10.1673/031.013.1501>

---

BioOne Complete ([complete.BioOne.org](https://complete.BioOne.org)) is a full-text database of 200 subscribed and open-access titles in the biological, ecological, and environmental sciences published by nonprofit societies, associations, museums, institutions, and presses.

Your use of this PDF, the BioOne Complete website, and all posted and associated content indicates your acceptance of BioOne's Terms of Use, available at [www.bioone.org/terms-of-use](https://www.bioone.org/terms-of-use).

Usage of BioOne Complete content is strictly limited to personal, educational, and non - commercial use. Commercial inquiries or rights and permissions requests should be directed to the individual publisher as copyright holder.

---

BioOne sees sustainable scholarly publishing as an inherently collaborative enterprise connecting authors, nonprofit publishers, academic institutions, research libraries, and research funders in the common goal of maximizing access to critical research.



## Field response of the twig beetle, *Pityophthorus pubescens*, to the aggregation pheromone, (E)-(+)-pityol, is not inhibited by (E)-(-)-pityol, and evidence of monogyny

Sergio López<sup>1a</sup>, Juan Carlos Iturrondobeitia<sup>2b</sup>, and Arturo Goldarazena<sup>1c\*</sup>

<sup>a</sup>NEIKER-TECNALIA, Basque Institute of Agricultural Research and Development, Department of Plant Production and Protection, Arkaute, 46. E-01080 Vitoria Spain.

<sup>b</sup>Department of Zoology and Animal Cell Biology, University of Basque Country, Sarriena s/n. E-48940, Leioa, Spain.

### Abstract

Field studies were conducted to determine the flight response of the twig beetle *Pityophthorus pubescens* (Marsham) (Coleoptera: Curculionidae: Scolytinae) to the potential aggregation pheromone component, (E)-(+)-pityol, and its racemic form, (E)-( $\pm$ )-pityol, in different *Pinus* spp. L. (Pinales: Pinaceae) stands in the Basque Country (Northern Spain). Both (E)-(+)-pityol and (E)-( $\pm$ )-pityol equally attracted more males than females, and they were all significantly different from the blank controls. Data about *P. pubescens* gallery systems in naturally infested *P. radiata* D. Don branches are also provided. The presence of one male and one female was the most common gallery habitation found in debarked twigs. Current results suggest that *P. pubescens* may be monogynous and females might mediate the aggregation of mating partners.

**Keywords:** flight response, galleries, reproduction, Scolytinae

**Correspondence:** <sup>a</sup> [slopez@neiker.net](mailto:slopez@neiker.net), <sup>b</sup> [juancarlos.iturrondobeitia@ehu.es](mailto:juancarlos.iturrondobeitia@ehu.es), <sup>c</sup> [agoldarazena@neiker.net](mailto:agoldarazena@neiker.net),

\*Corresponding author

**Editor:** Nadir Erbilgin was editor of this paper.

**Received:** 11 January 2012 **Accepted:** 1 June 2012

**Copyright :** This is an open access paper. We use the Creative Commons Attribution 3.0 license that permits unrestricted use, provided that the paper is properly attributed.

**ISSN:** 1536-2442 | Vol. 13, Number 15

#### Cite this paper as:

López S, Iturrondobeitia JC, Goldarazena A. 2013. Field response of the twig beetle, *Pityophthorus pubescens*, to the aggregation pheromone, (E)-(+)-pityol, is not inhibited by (E)-(-)-pityol, and evidence of monogyny. *Journal of Insect Science* 13:15. Available online: <http://www.insectscience.org/13.15>

## Introduction

Pitch canker disease, caused by the fungal agent *Fusarium circinatum* (= *F. subglutinans* f.sp. *pini*) (Nirenberg and O'Donnell) (Hypocreales: Nectriaceae), has spread throughout the world. It is well reported that several insect species, mainly bark beetles, are capable of transmitting the pathogen (Fox et al. 1991; Hoover et al. 1995). Twig beetles of genus *Pityophthorus* Eichhoff (Coleoptera: Curculionidae: Scolytinae) have been traditionally considered as a secondary bark beetles group, due to their life habits and development in branches of dead and decaying trees (Bright 1981; Wood 1982). However, *P. setosus* and *P. carmeli* in California (Storer et al. 2004; Sakamoto et al. 2007) and *P. pubescens* (Marsham) in the Basque Country (northern Spain) (Romón et al. 2007) have been associated with *F. circinatum*.

Little is known about the biology of *P. pubescens*. According to previous research, it is considered as the only species of the genus inhabiting *P. radiata* stands of the Basque Country (López et al. 2007; López 2010), and it breeds in a broad number of *Pinus* L. (Pinales: Pinaceae) species (Balachowsky 1949; Pfeffer, 1976). It seems to show preference for host fresh tissues, according to the avoidance it exhibits to 4,6,6-trimethylbicyclo-[3.1.1]hept-3-en-2-one ((1*S*, 4*S*)-(-)-verbenone) (Romón et al. 2007). However, there is a lack of knowledge about the biology and chemical ecology of the species.

Evidence of (2*R*, 5*S*)-2-(1-hydroxy-1-methylethyl)-5-methyltetrahydrofuran [hereafter (*E*)-(+)-pityol] as an aggregation pheromone component has been presented by López et al. (2011). Results obtained via effluvia collection revealed that both sexes emit (*E*)-pityol, although neither enantiomeric

composition nor differences in emissions between sexes were elucidated. Moreover, behavioral assays in Y-tube olfactometer showed a stronger attractive effect on males (López et al. 2011). Taking into account these previous results, the main objective of our study was to determine the response of *P. pubescens* to (*E*)-(+)-pityol and the racemic mixture in different *Pinus* spp. stands of the Basque Country, in order to provide insight into the aggregation behavior of the species, and in the second instance, to infer the breeding behavior of the species through the observation of gallery systems.

## Materials and Methods

### Chemicals

Both (*E*)-(+)-pityol (99% chemical purity) and the racemic mixture (99%) were kindly synthesized by Prof. W. Francke (Institute of Organic Chemistry, University of Hamburg, Hamburg, Germany), following the methodology described in Mori and Puapoomchareon (1987).

### Field assays

Two assays were carried out in four different *Pinus* spp. mature stands (ca. 30–35 years) of similar area in the Basque Country during 2011. The first trapping assay was conducted from 1 May to 30 June 2011, whereas the second one took place from 15 July to 15 September. This temporal frame was set due to the flight periods of *P. pubescens* in these months (S. López unpublished data). Three eight-unit Lindgren multiple funnel traps (Econex S.L., [www.e-econex.com](http://www.e-econex.com)), 106 cm height, were placed in each stand. Sampling localities and their geographic coordinates are detailed in Table 1. Each trap was hung between two adjacent trees, with the top of the trap at 2 m above the ground and the distance between traps at least 75 m. One trap was set

**Table 1.** *Pinus* spp. stands sampled during field trapping with (*E*)-(+)-pityol and racemic (*E*)-pityol in different localities in the Basque Country (Northern Spain).

<i>Pinus</i> spp.	Locality	Latitude and longitude
<i>P. radiata</i>	Gorosika	43° 15' N, 02° 42' W
<i>P. nigra</i>	Pipaón	42° 36' N, 02° 38' W
<i>P. pinaster</i>	Arza	43° 09' N, 03° 08' W
<i>P. sylvestris</i>	Barrio	42° 48' N, 03° 05' W

as a blank control, whereas the other two traps were baited either with (*E*)-(+)-pityol or the racemic mixture. Releasing devices consisted of one 1.5-mL capped plastic microcentrifuge vial (VRW International, [www.vwr.com](http://www.vwr.com)) containing 2.5 µl of the attractant. After sealing them, caps were pierced with a number 2, heated insect pin (Dallara et al. 2000). The vials were refilled every week, and traps were re-randomized every week. Fifty mL of propylene glycol (propane 1,2-diol) (99%) (Panreac, [www.panreac.com](http://www.panreac.com)) were added to each trap cup in order to kill and preserve captured insects. Insects caught were removed every week during the two months (n = 8 weeks, considered as replicates), taken to the laboratory, and identified under a Leica MZ95 stereo microscope (Leica Microsystems, [www.leica-microsystems.com](http://www.leica-microsystems.com)) with the aid of identification keys (Balachowsky 1949; Pfeifer 1976). Gender was determined based on the presence of yellowish hairs on the frons, a typical characteristic of females (Pfeifer 1976) (Figure 1). Voucher specimens were deposited at the Entomology Collection of the NEIKER-Basque Institute for Agricultural Research and Development, Basque Country, Spain.

### Branch dissection

Naturally-pruned branches (ca. 10 cm length and 5 mm diameter) were collected from a 30–40 year-old *P. radiata* stand, located at Gorosika (43° 15' N, 02° 42' W), Basque Country. Every week, from the beginning of May until the end of June, 40 naturally pruned branches were randomly picked up from the ground. Branches were dissected with a scal-

pel under a stereo microscope. Photographs were taken with a DFC300 (Leica Microsystems) camera attached to the stereo microscope.

### Statistical analysis

Field-trapping mean catches of males and females were compared independently for each *Pinus* species and subjected to a two-way ANOVA analysis (with sex and pheromone taken as factors), followed by Tukey *post-hoc* tests at a significance level of  $\alpha = 0.05$ . A square root transformation was used to normalize the data and correct the heteroscedasticity. All the analyses were performed with the statistical software SPSS 2004 SYSTAT statistical package (version 13.0, SPSS, [www-01.ibm.com/software/analytics/spss](http://www-01.ibm.com/software/analytics/spss))

### Results

#### Field assays

Apart from *P. pubescens*, no other bark beetle species were found in multiple funnel traps. A total of 9,121 *P. pubescens* were caught during field trapping from May to June, whereas 8,241 were trapped from July to September. Mean sex ratio, expressed as the percentage of males caught, for each sampling period and *Pinus* spp. stand is shown in Table 2. Two-way ANOVA revealed significant differences within sexes in all *Pinus* spp. stands, both in May–June (*P. radiata*  $F_{5,42} = 326.12$ ,  $p < 0.001$ ; *P. sylvestris*  $F_{5,42} = 89.27$ ,  $p < 0.001$ ; *P. pinaster*  $F_{5,42} = 221.37$ ,  $p < 0.001$ ; *P. nigra*  $F_{5,42} = 51.43$ ,  $p < 0.001$ ) and July–September (*P. radiata*  $F_{5,42} = 340.84$ ,  $p < 0.001$ ; *P. sylves-*

**Table 2.** Mean sex ratio data ( $\pm$  SEM), expressed as percentage of male catches in (*E*)-pityol baited multiple-funnel traps, for both field-trapping periods and *Pinus* spp. stand.

<i>Pinus</i> spp.	1 May – 30 June 2011		15 July – 15 September	
	( <i>E</i> )-(+)-pityol	( <i>E</i> )-(±)-pityol	( <i>E</i> )-(+)-pityol	( <i>E</i> )-(±)-pityol
<i>P. radiata</i>	78,70 $\pm$ 0,99	81,66 $\pm$ 3,58	80,36 $\pm$ 0,76	77,13 $\pm$ 1,62
<i>P. sylvestris</i>	81,60 $\pm$ 0,67	82,38 $\pm$ 1,07	83,27 $\pm$ 1,32	81,53 $\pm$ 0,93
<i>P. pinaster</i>	82,79 $\pm$ 0,41	85,14 $\pm$ 2,30	80,58 $\pm$ 0,53	82,37 $\pm$ 1,79
<i>P. nigra</i>	86,6 $\pm$ 2,35	84,65 $\pm$ 1,78	84,12 $\pm$ 1,86	79,25 $\pm$ 1,93

*tris*  $F_{5,42} = 76.30$ ,  $p < 0.001$ ; *P. pinaster*  $F_{5,42} = 235.75$ ,  $p < 0.001$ ; *P. nigra*  $F_{5,42} = 45.99$ ,  $p < 0.001$ ). In all these cases male catches were significantly higher. Significant differences were found between (*E*)-pityol baited traps and the blank control, although there were no differences between (*E*)-(+)-pityol and the racemic mixture in both sexes and experiments (Table 3, 4).

### Branch dissection

Of 147 examined galleries that contained at least one *P. pubescens*, 108 (73.46%) contained both a male and female, whereas 24 (16.32%) contained only one female. In addition, seven males (4.76%) were found alone in a gallery, four galleries (2.72%) were found to have two males and one female, three had two males and two females (2.04%), and only one had one male and two females (0.68%). It is remarkable that all beetles initiating galleries (24 females and seven males) were found until mid-May. On the contrary, galleries containing more than a single *P. pubescens* were collected at later dates. 102 galleries with a pair of beetles of both sexes had been excavated in the inner bark, with parental galleries showing a longitudinal pattern (Figure 2A). However, six galleries containing a pair were

observed in the pith of relatively fresh branches (Figure 2B). Pair-occupied parental galleries showed a mean length of  $6.57 \pm 2.90$  mm (range 2.28–14.19 mm).

### Discussion

Here, we provide evidence of the attractive effect of (*E*)-(+)-pityol and the racemic mixture on *P. pubescens* in field trapping. (*E*)-(+)-pityol is considered as a component of the aggregation pheromone of some species of the genus *Pityophthorus*. It was first isolated from male *P. pityographus* (Francke et al. 1987), and later from male *P. carmeli*, female *P. setosus*, and female *P. nitidulus* (Dallara et al. 2000). (*E*)-(+)-pityol is also known to be the female-produced sex pheromone of cone pine beetles, *Conophthorus resinosae* (Pierce et al. 1995), *C. coniperda* (Birgersson et al. 1995), and *C. ponderosae* (Miller et al. 2000). In all these cone beetle species, males are attracted strongly to (*E*)-(+)-pityol. In current work, attraction mediated by (*E*)-(+)-pityol and the racemic mixture did not differ, with both attracting significantly more male *P. pubescens* than females.

**Table 3.** Mean captures ( $\pm$  SEM) per week ( $n = 8$  weeks/replicates) of male and female *Pityophthorus pubescens* in Lindgren funnel traps baited with (*E*)-(+)-pityol and racemic (*E*)-pityol in different *Pinus* spp. stands of the Basque Country (Northern Spain) (1 May–30 June 2011). Means within the same row followed by a different letter are significantly different at  $p \leq 0.05$  (Two-way ANOVA, followed by Tukey *post-hoc* tests).

<i>Pinus</i> spp.	Males			Females		
	Control	( <i>E</i> )-(+)-pityol	( <i>E</i> )-(±)-pityol	Control	( <i>E</i> )-(+)-pityol	( <i>E</i> )-(±)-pityol
<i>P. radiata</i>	0.12 $\pm$ 0.12a	207.73 $\pm$ 3.45b	178.17 $\pm$ 7.06b	0.12 $\pm$ 0.12a	29.00 $\pm$ 7.65c	30.71 $\pm$ 6.31c
<i>P. sylvestris</i>	0.12 $\pm$ 0.12a	39.63 $\pm$ 3.32b	42.17 $\pm$ 2.42b	0.00a	9.33 $\pm$ 1.09c	6.23 $\pm$ 3.08c
<i>P. pinaster</i>	0.50 $\pm$ 0.37a	196.72 $\pm$ 6.53b	224.14 $\pm$ 5.31b	0.25 $\pm$ 0.16a	44.90 $\pm$ 2.92c	36.80 $\pm$ 1.23c
<i>P. nigra</i>	0.00a	9.16 $\pm$ 0.37b	11.63 $\pm$ 1.17b	0.12 $\pm$ 0.12a	1.94 $\pm$ 0.38c	1.85 $\pm$ 0.49c

**Table 4.** Mean captures ( $\pm$  SEM) per week ( $n = 8$  weeks/replicates) of male and female *Pityophthorus pubescens* in Lindgren funnel traps baited with (*E*)-(+)-pityol and racemic (*E*)-pityol in different *Pinus* spp. stands of the Basque Country (Northern Spain) (15 July–15 September 2011). Means within the same row followed by a different letter are significantly different at  $p \leq 0.05$  (Two-way ANOVA, followed by Tukey *post-hoc* tests).

<i>Pinus</i> spp.	Males			Females		
	Control	( <i>E</i> )-(+)-pityol	( <i>E</i> )-(±)-pityol	Control	( <i>E</i> )-(+)-pityol	( <i>E</i> )-(±)-pityol
<i>P. radiata</i>	0.25 $\pm$ 16a	211.88 $\pm$ 9.65b	195.50 $\pm$ 8.04b	0.12 $\pm$ 0.12a	30.62 $\pm$ 2.85c	27.25 $\pm$ 2.94c
<i>P. sylvestris</i>	0.50 $\pm$ 0.26a	44.25 $\pm$ 4.11b	38.75 $\pm$ 3.36b	0.12 $\pm$ 0.12a	9.25 $\pm$ 0.99c	7.37 $\pm$ 0.96c
<i>P. pinaster</i>	0.37 $\pm$ 0.18a	199.50 $\pm$ 10.51b	203.00 $\pm$ 9.93b	0.12 $\pm$ 0.12a	43.37 $\pm$ 4.32c	33.25 $\pm$ 2.89c
<i>P. nigra</i>	0.00a	9.75 $\pm$ 1.03b	7.37 $\pm$ 0.92b	0.00a	2.12 $\pm$ 0.44c	1.37 $\pm$ 0.32c

In contrast, the negative enantiomer of (*E*)-pityol appears to be inactive to *Pityophthorus* spp. (Francke et al. 1987; Dallara et al. 2000; W. Francke, personal communication). European *P. pityographus* did not response to the mixture of racemic grandisol and (*E*)-(-)-pityol, whereas an attractive effect was observed when replacing (*E*)-(-)-pityol with (*E*)-(+)-pityol (Francke et al. 1987). Neither *P. setosus* nor *P. carmeli* were attracted to (*E*)-(-)-pityol (Dallara et al. 2000), and (*E*)-(-)-pityol did not interrupt the response of *P. setosus* to (*E*)-(+)-pityol (Dallara et al. 2000). Thus, this evidence and previous significant results with (*E*)-(+)-pityol and the racemic mixture (López et al. 2011) led to focus our work on these two compounds.

Traditionally, monogamy for these beetles has been defined as the reproductive behavior in which either sex may initiate the boring of a new gallery, and both sexes usually participate in the construction and care of the galleries (Wood 1982). The initiating sex is always constant. However, this term was redefined by Kirkendall (1983), who suggested a different point of view based on the mating system. According to Kirkendall, monogamy is considered as a mating system characterized by the presence of males in the gallery system until females finish ovipositing, whereas monogyny terminology is applied to those gallery systems made by the work of a single female (Kirkendall 1983). Hereafter, this terminology will be followed. Several genera of subtribe Pityophthorina, including *Pityophthorus* spp. complex, are characterized as harem polygynous, according to their mating system (Kirkendall 1983). Almost all Nearctic *Pityophthorus* species are considered within this category, but with some exceptions. Bright (1981) suggested that monogyny may be present in pith borer species, such as *P. opaculus* and *P. puberulus*, and evidence of

monogyny has been found in *P. setosus* (Dallara et al. 2000), *P. orarius*, and *P. fivazi* (Kirkendall 1983). In addition, monogyny seems to be present in Palearctic *P. henscheli*, *P. morosovi*, *P. traegardhi*, and *P. carniolicus* (Pfeffer 1976). This reproductive behavior is also present in the closely related genus *Conophthorus* (Wood 1982). On the contrary, harem polygyny is characterized by (1) the presence of some female in a gallery system in which one female is already present and (2) a male-initiated gallery system and male-production of semiochemicals primarily attractive to females, whereas monogyny systems are based on a gallery system made by the work of a single female (Kirkendall 1983). Thus, taking into account these assertions, if one considered *P. pubescens* as polygynous, one would expect to find various females in a multiple arm gallery system around a nuptial chamber. Interestingly, our results are in contrast to this expected idea, and support the monogynous mating system hypothesis. First, parental galleries occupied by one female and one male consisted of a single and longitudinal gallery, with the absence of any star-shape nuptial chamber. This pattern of gallery habitation is similar to that found for *P. setosus* (Dallara 1997). In contrast, only one mother gallery was occupied by one male and two females, a typical pattern of polygynous. Secondly, most of the beetles that had initiated gallery construction were females, while gallery initiation was found for only seven males. It has been demonstrated that both sexes of *P. setosus* and *P. carmeli* are capable of tunneling in phloem of *P. radiata* bolts (Dallara et al. 2000). However, the proportion of male *P. carmeli* constructing galleries was found to be significantly higher than that of females. Conversely, a significantly greater proportion of female *P. setosus* excavated (Dallara et al. 2000). Our data are consistent with *P. setosus*, and could be evi-



dence for considering females as the gallery initiation sex.

The sex ratio of beetles that responded to semiochemical trapping was strongly male-biased. Male catches either with the chiral (*E*)-pityol or the racemic mixture represented more than the 80% of the total catches in almost all *Pinus* spp. stands. These results are consistent with Dallara et al. (2000). In polygynous *P. carmeli*, females responded stronger than males to (*E*)-(+)-pityol and (5*S*, 7*S*)-(-)-7-methyl-1,6-dioxaspiro(4.5)decane (*E*)-(-)-conophthorin mixture, whereas in monogynous *P. setosus*, attraction to (*E*)-(+)-pityol alone was significantly higher in males than in females. Moreover, male *P. pityographus*, another polygynous species, is only attracted by the combination of *cis*-1-(2-hydroxyethyl)-1-methyl-2-(1-methyl-ethenyl)-cyclobutane ((±)-grandisol) and (*E*)-(+)-pityol (Francke et al. 1987). In fact, aggregation in these two polygynous species is not mediated in absence of any of the aggregation component. Our results resemble those observed for *P. setosus*, with a single component attracting significantly more opposite conspecifics.

According to our results, we propose the following host-attacking and mating sequence. Pioneering females would perform with the suitable-host seeking process and start the gallery construction. Then, the emission of (*E*)-pityol would attract males and a single male subsequently would enter the gallery initiated by each female. However, since both sexes appear to emit (*E*)-pityol, the biological implication of male-produced (*E*)-pityol remains still unclear. In *Conophthorus* spp., males emit (*E*)-(-)-conophthorin in order to repel and warn rival males (Birgersson et al. 1995). Nevertheless, it is unlikely that male *P. pubescens* would emit (*E*)-pityol as a warning signal for conspecific males, since we have

demonstrated that (*E*)-pityol elicits a significant attractive effect on males. Thus, male-produced (*E*)-pityol requires further studies to disclose its biological activity.

In those gallery systems in which a pair of opposite conspecifics was present, eggs were observed. They had been deposited in small individual chambers on both sides of the mother gallery, and they were greyish, with oblong shape, 0.354 mm average length (range 0.303–0.399 mm, *n* = 58), and 0.545 mm average width (range 0.501–0.595, *n* = 58). Larvae were also present in some galleries, but no measures or biological data were taken. The mite species *Pyemotes parviscolyti* (Acari: Pyemotidae) was found in 56 breeding galleries. Female *P. parviscolyti* were found feeding on larvae and eggs of *P. pubescens*. Phoretomorphic females were also observed attached to the first pair of coxae of both sexes of *P. pubescens*.

In light of our results, we suggest using (*E*)-(+)-pityol or the more readily available and economical racemic mixture as a useful tool for monitoring populations of *P. pubescens* in *Pinus* spp. stands. In addition, it could even be used as a potential mate-finding disruptor in field due to its strong attractive effect on males. This kind of strategy was previously used with *C. coniperda*, with promising results (Trudel et al. 2004). There are commercially available devices containing the racemic mixture (95.4%) with a 0.2 mg/day release rate, which might correspond to about the equivalent of 200 female *C. coniperda* (De Groot and DeBarr 1998), and it could be as effective as the synthetic compounds. Further field studies should be carried out to determine if mate disruption in *P. pubescens* would be feasible.

## Acknowledgments

Thanks to the Department of Education, University of the Basque Country, for a PhD fellowship to S. López, and the Department of Agriculture and Fisheries of the Basque Country and MICINN (project AGL2009-13452-C02-01) for financial support. We thank Mr. Ander Isasmendi and Mr. Francisco Saenz de Urturi (Neiker-Tecnalia), as well as the Biscay government, for technical assistance. Prof. W. Francke kindly provided pure (*E*)-(+)-pityol and racemic (*E*)-(±)-pityol.

## References

- Balachowsky A. 1949. Faune de France. In: *Coléoptère Scolytidae*. Librairie de la Faculté Des Sciences.
- Birgersson G, DeBarr GL, de Groot P, Dalusky MJ, Pierce Jr HD, Borden JH, Meyer H, Francke W, Espelie KE, Berisford CW. 1995. Pheromones in white pine cone beetle, *Conophthorus coniperda* (Schwarz) (Coleoptera: Scolytidae). *Journal of Chemical Ecology* 21: 143–167.
- Bright DE. 1981. Taxonomic monograph of the genus *Pityophthorus* Eichhoff in North and Central America (Coleoptera: Scolytidae). *Memoirs of the Entomological Society of Canada* 118: 1-378.
- Dallara PL. 1997. Studies on the distribution, interspecific relationships, host range, and chemical ecology of *Pityophthorus* spp. (Coleoptera: Scolytidae) and selected insectan associates, and their association with *Fusarium subglutinans* f.sp. *pini* in central coastal California. Ph.D. Dissertation, University of California, Berkeley.
- Dallara PL, Seybold SJ, Meyer H, Tolasch T, Francke W, Wood DL. 2000. Semiochemicals from three species of *Pityophthorus* (Coleoptera: Scolytidae): Identification and field response. *The Canadian Entomologist* 132: 889–906.
- De Groot P, DeBarr GL. 1998. Factors affecting capture of the white cone beetle, *Conophthorus coniperda* (Schwarz) (Col., Scolytinae) in pheromone traps. *Journal of Applied Entomology* 122: 281–286.
- Fox JW, Wood DL, Koehler CS, O'Keefe ST. 1991. Engraver beetles (Scolytidae: *Ips* species) as vectors of the pitch canker fungus, *Fusarium subglutinans*. *The Canadian Entomologist* 123: 1355–1367.
- Francke W, Pan ML, König WA, Mori K, Puapoomchareon P, Heuer H, Vité JP. 1987. Identification of 'pityol' and 'grandisol' as pheromone components of the bark beetle, *Pityophthorus pityographus*. *Naturwissenschaften* 74: 343–345.
- Hoover K, Wood DL, Fox JW, Bros WE. 1995. Quantitative and seasonal association of the pitch canker fungus, *Fusarium subglutinans* f.sp. *pini* with *Conophthorus radiatae* (Coleoptera: Scolytidae) and *Ernobius punctulatus* (Coleoptera: Anobiidae) which infest *Pinus radiata*. *The Canadian Entomologist* 127: 79–91.
- Kirkendall LR. 1983. The evolution of mating systems in bark and ambrosia beetles (Coleoptera: Scolytidae and Platypodidae). *Zoological Journal of the Linnean Society* 77: 293–352.
- López S. 2010. Study of genus *Pityophthorus* Eichhoff (Coleoptera: Scolytinae) in *Pinus radiata* D. Don stands of the Basque Country



(in Spanish). Ph.D. Dissertation, University of the Basque Country.

López S, Romón P, Iturrondobeitia JC, Goldarazena A. 2007. *Conifer bark beetles of the Basque Country: Practical guide for identification and control* (in Spanish). Publication Central Service of the Basque Country Government.

López S, Quero C, Iturrondobeitia JC, Guerrero A, Goldarazena A. 2011. Evidence of (*E*)-Pityol as aggregation pheromone of *Pityophthorus pubescens* (Coleoptera: Curculionidae: Scolytinae). *The Canadian Entomologist* 143: 447–454.

Miller DR, Pierce Jr HD, de Groot P, Jean-Williams N, Bennett R, Borden JH. 2000. Sex pheromone of *Conophthorus ponderosae* (Coleoptera: Scolytidae) in a coastal stand of western white pine (Pinaceae). *The Canadian Entomologist* 132: 243–245.

Mori K, Puapoomchareon P. 1987. Conversion of the enantiomers of sulcatol (5-methyl-5-hepten-2-ol) to the enantiomers of pityol (*trans*-2-(1-hydroxy-1-methylethyl)-5-methyltetrahydrofuran) a male specific attractant of the bark beetle *Pityophthorus pityographus*. *Liebigs Annalen der Chemie* 3: 271–272.

Pfeffer A. 1976. Revision der palaarktischen Arten der Gattung *Pityophthorus* Eichhoff (Coleoptera: Scolytidae) (in German). *Acta Entomologica Bohemoslovaca* 73: 324–342.

Pierce HD, de Groot P, Borden JH, Ramaswamy S, Oehlschlager AC. 1995. Pheromones

in red pine cone beetle, *Conophthorus resinosa* Hopkins, and its synonym, *C. banksianae* McPherson (Coleoptera: Scolytidae). *Journal of Chemical Ecology* 21: 169–185.

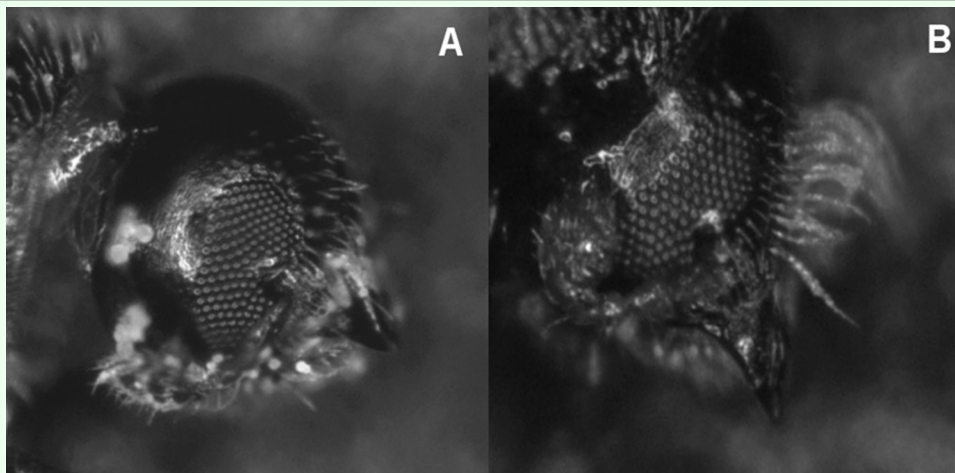
Romón P, Iturrondobeitia JC, Gibson K, Lindgren BS, Goldarazena A. 2007. Quantitative association of bark beetles with pitch canker fungus and effect of verbenone on their semiochemical communication in Monterey pine forests in Northern Spain. *Environmental Entomology* 36: 743–750.

Sakamoto JM, Gordon TR, Storer AJ, Wood DL. 2007. The role of *Pityophthorus* spp. as vectors of pitch canker affecting Monterey pines (*Pinus radiata*). *The Canadian Entomologist* 139: 864–871.

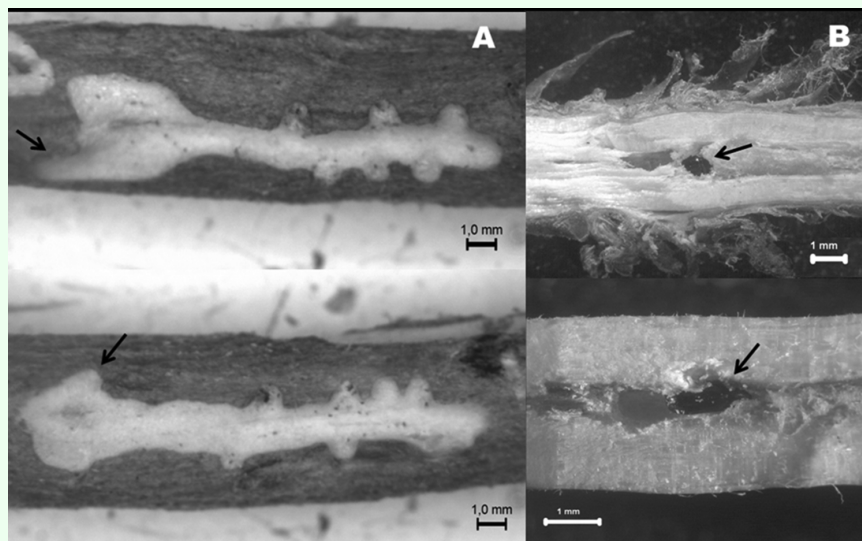
Storer AJ, Wood DL, Gordon TR. 2004. Twig beetles, *Pityophthorus* spp. (Coleoptera: Scolytidae), as vectors of the pitch canker pathogen in California. *The Canadian Entomologist* 136: 685–693.

Trudel R, Guertin C, De Groot P. 2004. Use of pityol to reduce damage by the white pine cone beetle, *Conophthorus coniperda* (Col., Scolytidae) in seed orchards. *Journal of Applied Entomology* 128: 221–226.

Wood SL. 1982. The bark and ambrosia beetles of North and Central America, a taxonomic monograph. *Great Basin Naturalist Memoirs* 6: 1–1359.



**Figure 1.** *Pityophthorus pubescens* head. (A) Male. (B) Female. Note the pubescent frons. High quality figures are available online.



**Figure 2.** *Pityophthorus pubescens* gallery pattern. (A) Inner-bark excavated galleries, with egg niches across the gallery. Arrows indicate entrance holes. (B) Female *P. pubescens* boring into the pith (arrows). High quality figures are available online.