



## **A Nonnative Palmer Amaranth (*Amaranthus palmeri*) Population in the Republic of South Africa is Resistant to Herbicides with Different Sites of Action**

Authors: Reinhardt, Carl, Vorster, Juan, Küpper, Anita, Peter, Falco, Simelane, Adelaide, et al.

Source: Weed Science, 70(2) : 183-197

Published By: Weed Science Society of America

URL: <https://doi.org/10.1017/wsc.2022.9>

---

BioOne Complete ([complete.BioOne.org](https://complete.BioOne.org)) is a full-text database of 200 subscribed and open-access titles in the biological, ecological, and environmental sciences published by nonprofit societies, associations, museums, institutions, and presses.

Your use of this PDF, the BioOne Complete website, and all posted and associated content indicates your acceptance of BioOne's Terms of Use, available at [www.bioone.org/terms-of-use](https://www.bioone.org/terms-of-use).

Usage of BioOne Complete content is strictly limited to personal, educational, and non - commercial use. Commercial inquiries or rights and permissions requests should be directed to the individual publisher as copyright holder.

---

BioOne sees sustainable scholarly publishing as an inherently collaborative enterprise connecting authors, nonprofit publishers, academic institutions, research libraries, and research funders in the common goal of maximizing access to critical research.

## Research Article

**Cite this article:** Reinhardt C, Vorster J, Küpper A, Peter F, Simelane A, Friis S, Magson J, Aradhya C (2022) A nonnative Palmer amaranth (*Amaranthus palmeri*) population in the Republic of South Africa is resistant to herbicides with different sites of action. *Weed Sci.* **70**: 183–197. doi: [10.1017/wsc.2022.9](https://doi.org/10.1017/wsc.2022.9)

Received: 28 September 2021

Revised: 2 February 2022

Accepted: 4 February 2022

First published online: 14 February 2022

**Associate Editor:**

Mithila Jugulam, Kansas State University

**Keywords:**







Pigweed; southern Africa

**Author for correspondence:**

Chandrashekar Aradhya, Bayer CropScience, 700 West Chesterfield Parkway, Chesterfield, MO 63017.

(Email: [Chandrashekar.aradhya@bayer.com](mailto:Chandrashekar.aradhya@bayer.com))

# A nonnative Palmer amaranth (*Amaranthus palmeri*) population in the Republic of South Africa is resistant to herbicides with different sites of action

Carl Reinhardt<sup>1,2</sup> , Juan Vorster<sup>2</sup> , Anita Küpper<sup>3</sup> , Falco Peter<sup>3</sup>,  
Adelaide Simelane<sup>2</sup>, Stephanus Friis<sup>4</sup> , Jacques Magson<sup>5</sup>  and  
Chandrashekar Aradhya<sup>6</sup> 

<sup>1</sup>Professor, Unit for Environmental Sciences and Management, School of Geo- and Spatial Sciences, North-West University, Potchefstroom, Republic of South Africa; <sup>2</sup>Department of Plant and Soil Sciences, University of Pretoria, Pretoria, Republic of South Africa; <sup>3</sup>Weed Resistance Research, Bayer AG, Crop Science Division, Frankfurt am Main, Germany; <sup>4</sup>Market Development, Bayer AG, CropScience Division, Isando, Republic of South Africa; <sup>5</sup>Regulatory Science, Bayer AG, CropScience Division, Isando, Republic of South Africa and <sup>6</sup>Head of Herbicide Resistance Management, Regulatory Science, Bayer AG, CropScience Division, Chesterfield, MO, USA

**Abstract**

Palmer amaranth (*Amaranthus palmeri* S. Watson) is not native to Africa. Based on the presence and persistence of *A. palmeri* populations, its invasive status in southern Africa is classified as “naturalized.” Globally, *A. palmeri* is one of the most troublesome weed species in several crops, including soybean [*Glycine max* (L.) Merr.], maize (*Zea mays* L.), and cotton (*Gossypium hirsutum* L.). Certain populations of *A. palmeri* in various countries were reported to be resistant to herbicides with different sites of action (SOAs). Two biotypes of *A. palmeri* in the United States reportedly each have resistance to herbicides representing five different SOAs, and between them a total of eight different SOAs are involved. Resistance mechanisms in these biotypes involve target-site and/or non-target site resistance. Here we characterize a specific *A. palmeri* population that was found in the Douglas district in South Africa and showed resistance to various herbicide SOAs. Initially, this *A. palmeri* population was discovered in a glyphosate-tolerant cotton field, where it survived glyphosate treatment. Subsequently, greenhouse experiments were conducted to characterize this *A. palmeri* population for potential resistance to herbicides of additional SOAs, and molecular analyses were conducted to reveal the mechanisms of herbicide resistance. Results indicated resistance to chlorimuron-ethyl and glyphosate in this population, while <90% control (decreased sensitivity) was observed at the label rate for mesotrione, atrazine, saflufenacil, and S-metolachlor. However, glufosinate, tembotrione, acifluorfen, dicamba, 2,4-D, metribuzin, acetochlor, isoxaflutole, diflufenican, and pyroxasulfone were effective at controlling this population. This profiling of herbicide sensitivity has allowed development of programs to control and potentially minimize the spread of this weed. In addition, molecular analysis of EPSPS revealed the role of higher copy number as a mechanism for glyphosate resistance in this population and a Ser-653-Asn target-site mutation likely conferring resistance to the acetolactate synthase-inhibitor chlorimuron-ethyl. No known target-site mutations were identified for the protoporphyrinogen oxidase-inhibitor group.

**Introduction**

Palmer amaranth (*Amaranthus palmeri* S. Watson) is an annual weed species native to the area encompassing northwestern Mexico and the southern United States (Sauer 1957). Over the last two decades, *A. palmeri* has become one of the most widespread, troublesome, and economically damaging weed species in several annual crop systems, particularly soybean [*Glycine max* (L.) Merr.], maize (*Zea mays* L.), and cotton (*Gossypium hirsutum* L.), in several countries, including the United States, Argentina, Brazil, Uruguay, and Mexico (Culpepper et al. 2006, 2008; Gaines et al. 2021; Heap 2022; Küpper et al. 2017; Morichetti et al. 2013; Ward et al. 2013). Depending on the infestation level, yield losses from *A. palmeri* are reported to be from ~10% to 100% (Bensch et al. 2003; Van De Stroet 2018). In addition, the presence of *A. palmeri* has been reported in more than 30 countries, globally (USDA-APHIS 2020). However, in many of these countries, it is present as a casual alien and may not be fully established (USDA-APHIS 2020).

*Amaranthus palmeri* is a new exotic plant species in the Republic of South Africa (RSA). It was first detected in the 2017 to 2018 summer growing season on a farm in the Douglas district of the Northern Cape Province (29.05°S, 23.77°E) in a variety of crops grown on the farm: alfalfa (*Medicago sativa* L.), cotton, and maize. *Amaranthus palmeri* was found growing together with

© The Author(s), 2022. Published by Cambridge University Press on behalf of the Weed Science Society of America. This is an Open Access article, distributed under the terms of the Creative Commons Attribution licence (<http://creativecommons.org/licenses/by/4.0/>), which permits unrestricted re-use, distribution and reproduction, provided the original article is properly cited.



another *Amaranthus* species, locally called Cape pigweed or common pigweed (*Amaranthus hybridus* L. ssp. *hybridus* var. *hybridus*) (Botha 2010; Sukhorukov et al. 2021). In addition, spiny amaranth (*Amaranthus spinosus* L.), which originated from tropical America (Botha 2010), has been well established in the country for many decades. Hybridization between *A. palmeri* (as pollen source) and *A. hybridus* was estimated to occur at a frequency of <0.01% when they coexist within 3 m (Gaines et al. 2012). The same authors found that the highest levels of hybridization (up to 0.4%) were attained between *A. palmeri* and *A. spinosus*, which is genetically the species most closely related to *A. palmeri*. The South African *A. palmeri* population in the Douglas district initially drew the attention of farm management, because it was difficult to control with glyphosate (a nonselective herbicide) in a glyphosate-tolerant cotton crop. Two other populations have since been confirmed in the country, and another in Botswana, a country bordering the RSA to the northeast (Sukhorukov et al. 2021). The authors have provided geographic locations of these populations (Sukhorukov et al. 2021). These populations represent the first records of *A. palmeri* in southern Africa. Depending on the rate of spread, these known nonnative *A. palmeri* populations and the extent of *A. palmeri*'s negative impact, the status of this weed in southern Africa may change to "invasive" (Sukhorukov et al. 2021).

Numerous factors have contributed to *A. palmeri* becoming a dominant and difficult-to-control weed species, including its rapid growth rate (Horak and Loughin 2000), high fecundity (Bond et al. 2006; Burke et al. 2007; Horak and Loughin 2000; Keeley et al. 1987; Sellers et al. 2003), genetic diversity (Küpper et al. 2018a), ability to tolerate adverse conditions, and ability to evolve resistance to multiple herbicides (Burke et al. 2007; Liphadzi and Dille 2006; Shyam et al. 2021). Currently, there are 70 confirmed cases of *A. palmeri* resistance to various herbicides reported in the United States, Argentina, Brazil, Israel, Mexico, and Spain (Heap 2022). The first case of herbicide resistance in *A. palmeri* was recorded in 1989 for trifluralin (SOA Group 3) in cotton and soybean in the United States (Heap 2022). The first case of resistance to glyphosate (Group 9) was reported in 2004 from cotton production in the state of Georgia, USA (Culpepper et al. 2006; Heap 2022; Sosnoskie et al. 2011). *Amaranthus palmeri* populations resistant to glyphosate were shown to require from 1.5 to 115 times the rate of glyphosate to achieve 50% control compared with susceptible plants (Norsworthy et al. 2008; Steckel et al. 2008).

The most problematic cases of resistance in *A. palmeri* illustrate its ability to evolve resistance to herbicides of multiple sites of action (SOAs). The worst cases of multiple resistance in *A. palmeri* include resistance to herbicides representing five different SOAs in a biotype in Arkansas (USA) and to herbicides of six different SOAs in Kansas (USA) (Heap 2022; Shyam et al. 2021). Between these two biotypes, a total of eight different SOAs are involved. The six way-resistant *A. palmeri* biotype in Kansas (USA) was found in a long-term conservation-tillage system where it was inadequately controlled by field rates of herbicides representing six SOAs: auxin mimic (2,4-D) and acetolactate synthase (ALS), photosystem II (PSII), 5-enolpyruvylshikimate-3-phosphate synthase (EPSPS), protoporphyrinogen oxidase (PPO), and 4-hydroxyphenylpyruvate dioxygenase (HPPD) inhibitors (Shyam et al. 2021). One of the most prevalent forms of multiple resistance in an *A. palmeri* population is resistance to EPSPS-inhibiting (glyphosate; Group 9) and ALS-inhibiting (Group 2) herbicides (Heap 2022; Kohrt and Sprague 2017). Other herbicides for which *A. palmeri* biotypes were reported to have developed resistance include PS II inhibitors (Group 5), HPPD inhibitors

(Group 27), PPO inhibitors (Group 14), auxin mimics (Group 4), very-long-chain fatty-acid (VLCFA) synthesis inhibitors (Group 15), glutamine synthetase inhibitor (glufosinate ammonium; Group 10), and/or microtubule assembly inhibitors (Group 3) (Heap 2022).

There are three basic mechanisms by which weed species develop resistance to a herbicide: (1) target-site alteration, (2) enhanced metabolism of the herbicide, and (3) reduced herbicide access to the SOA within the plant cell (exclusion) (Küpper et al. 2018a; Sammons and Gaines 2014; Sammons et al. 2007; Ward et al. 2013). Avoidance was proposed as an additional mechanism whereby weeds avoid the toxic effect produced by the herbicide by inactivation of its biochemical ability (Sammons and Gaines 2014). More than 200 distinct weed biotypes worldwide have developed herbicide resistance via target-site alteration (Devine and Shukla 2000). Recently, *A. palmeri* and a few other species—kochia [*Bassia scoparia* (L.) A.J. Scott], *A. spinosus*, waterhemp [*Amaranthus tuberculatus* (Moq.) Sauer], and Italian ryegrass [*Lolium perenne* L. ssp. *multiflorum* (Lam.) Husnot]—have been found with duplications of the EPSPS gene, hence creating much higher levels of EPSPS protein and thereby developing resistance to glyphosate (Koo et al. 2018a, 2018b; Sammons and Gaines 2014). Gaines et al. (2010) reported 5- to 160-fold increases in EPSPS gene copy number and corresponding increases in EPSPS protein levels in a glyphosate-resistant *A. palmeri* population compared with a susceptible population. In addition, certain populations of glyphosate-resistant *A. palmeri* were shown to have target-site resistance via mutation(s) in the EPSPS gene (Dominguez-Valenzuela et al. 2017; Kaundun et al. 2019).

In this study, we present the first characterization of an *A. palmeri* population found in the Douglas district of the RSA in terms of its sensitivity to key herbicides in a controlled environment, as well as molecular assessment of the possible mechanisms of resistance to herbicides with selected SOAs. The information presented is intended to support development of the best strategies for *A. palmeri* management and to minimize further spread in the RSA and further afield in southern Africa.

## Materials and Methods

### Materials

Seeds from a suspected glyphosate-resistant *A. palmeri* population (referred to hereafter as "AMAPA-NC" for "*Amaranthus palmeri* in Northern Cape Province") were collected in April 2018 from a cotton field in the Douglas district (29.05°S, 23.77°E), Northern Cape Province, RSA. For the testing of this population's susceptibility to various herbicides in a controlled environment, two herbicide-susceptible *A. palmeri* lines were used: AMAPA-S1 from Shickley, NE, USA (collected in 2011) and AMAPA-S2 from Macon, GA, USA (collected in 2006). Published GenBank sequences of susceptible *A. palmeri* were used for target-gene sequence analysis.

### Herbicide Active Ingredients

Table 1 lists each herbicide used in the current study along with its trade name, HRAC's herbicide SOA group number (HRAC 2021), and recommended label rate. All trade names and label rates provided in Table 1 are based on their registration in Germany, where plant assays were conducted. The status of registration of these active ingredients (trade names may vary for a particular active ingredient) in the RSA is also indicated.

**Table 1.** Pre- and postemergence herbicides used in this study.<sup>a</sup>

Herbicide	SOA group	Registered in RSA	Trade name registered in Germany	Recommended label rate <sup>b</sup>	Herbicide registrant and address
Preemergence treatment				—g ai or ae ha <sup>-1</sup> —	
S-metolachlor	15	Yes	Dual Gold®	1,100	Syngenta Crop Protection AG CH-4002 Basel, Switzerland <a href="http://www.syngenta.com">www.syngenta.com</a>
Acetochlor	15	Yes	Trophee®	1,500	Dow Inc. Midland, MI, USA <a href="http://www.dow.com">www.dow.com</a>
Pyroxasulfone	15	Yes	Sakura®	120	Bayer AG, 51373 Leverkusen, Germany <a href="http://www.bayer.com">www.bayer.com</a>
Diflufenican	12	Yes	Brodal®	150	Bayer AG, 51373 Leverkusen, Germany <a href="http://www.bayer.com">www.bayer.com</a>
Isoxaflutole	27	Yes	Merlin®	150	Bayer AG, 51373 Leverkusen, Germany <a href="http://www.bayer.com">www.bayer.com</a>
Postemergence treatment					
Glyphosate	9	Yes	Roundup®	800	Bayer AG, 51373 Leverkusen, Germany <a href="http://www.bayer.com">www.bayer.com</a>
Glufosinate	10	Yes	Basta®	800	BASF SE 67056 Ludwigshafen, Germany <a href="http://www.basf.com">www.basf.com</a>
Chlorimuron-ethyl	2	Yes	Classic®	18	Corteva Agriscience Wilmington, DE, USA <a href="http://www.corteva.com">www.corteva.com</a>
Mesotrione	27	Yes	Callisto®	100	Syngenta Crop Protection AG CH-4002 Basel, Switzerland <a href="http://www.syngenta.com">www.syngenta.com</a>
Tembotrione	27	Yes	Tembotrione	100	Bayer AG, 51373 Leverkusen, Germany <a href="http://www.bayer.com">www.bayer.com</a>
Atrazine	5	Yes	Aatrex®	250	Syngenta Crop Protection AG CH-4002 Basel, Switzerland <a href="http://www.syngenta.com">www.syngenta.com</a>
Metribuzin	5	Yes	Sencor®	640	Bayer AG, 51373 Leverkusen, Germany <a href="http://www.bayer.com">www.bayer.com</a>
2,4-D	4	Yes	Esternon 60®	500	Corteva Agriscience Wilmington, DE, USA <a href="http://www.corteva.com">www.corteva.com</a>
Dicamba	4	Yes	Clarity®	240	BASF SE 67056 Ludwigshafen, Germany <a href="http://www.basf.com">www.basf.com</a>
Saflufenacil	14	Yes	Sharpen SC®	10	BASF SE 67056 Ludwigshafen, Germany <a href="http://www.basf.com">www.basf.com</a>
Acifluorfen	14	No	Blazer®	400	United Phosphorus Ltd Bandra West, Mumbai, India <a href="http://www.upl-ltd.com">www.upl-ltd.com</a>

<sup>a</sup>Abbreviation: SOA, site of action; RSA, Republic of South Africa.

<sup>b</sup>Label rate registered in Germany.

### Plant Growth Conditions

Approximately 10 to 20 *A. palmeri* seeds were directly sown into 8-cm-diameter Jiffy pots (Jiffy Products International B.V., Zwijndrecht, Netherlands) containing commercial potting soil at Bayer AG's controlled environment facility in Frankfurt, Germany, during 2019. The emerged seedlings were thinned to maintain 5 plants per pot for postemergence herbicide treatments. The pots were maintained under greenhouse conditions of 28/22 C

and 16/8 h day/night, respectively, with 50% relative humidity. The pots were irrigated, and plants were fertilized as necessary.

### Evaluation of Pre- and Postemergence Herbicides

The experimental design involved 10 and 5 plants per pot for pre-emergence and postemergence herbicide treatments, respectively, each with three replicates per treatment. Individual preemergence herbicides were applied to the soil surface 3 d after *A. palmeri* seeds

were sown in the pots, except for the untreated controls. These untreated controls also served to assess seed dormancy and viability. Individual postemergence herbicide treatments were applied when *A. palmeri* seedlings were at the 4-leaf stage. Individual herbicides were applied using a stationary research sprayer (Höchst AG, Höchst, Germany) calibrated to deliver a spray volume of 300 L ha<sup>-1</sup> at a pressure of 200 kPa through a TeeJet® 8001EVS nozzle (TeeJet Technologies GmbH, Schorndorf, Germany). Herbicide product information and recommended label rates (1×) are presented in Table 1. Dose–response assays were conducted for each herbicide at seven different rates: 1/16×, 1/8×, 1/4×, 1/2×, 1×, 2×, and 4×, where 1× is the label rate. In addition, untreated controls were included for comparison. Efficacy and visual injury ratings were assessed at 25 d after herbicide treatment (DAT) for preemergence herbicides, with 0% indicating no damage and 100% indicating full damage, and at 16 DAT for postemergence herbicides, with 0% indicating no survival and 100% indicating complete survival.

### Statistical Analysis

Dose–response analysis was conducted using the DRC package in R (Knezevic et al. 2007; R Core Team 2015) following Seefeldt et al. (1995). Survival data (proportion) were analyzed using the three-parameter log-logistic model in the DRC package:

$$y = \frac{D}{[1 + (x/LD_{50})^b]} \quad (1)$$

where  $y$  is survival,  $x$  is the herbicide dose,  $D$  is the upper limit,  $b$  is the slope, and  $LD_{50}$  is the dose causing 50% reduction in survival.

### Assessment of Target-Site Mutations

#### Assessment of EPSPS, ALS, and PPO Target-Site Mutations

A leaf segment of approximately 0.5 cm<sup>2</sup> was sampled from each of 20 *A. palmeri* and 10 *A. hybridus* individual plants directly from the field in the Douglas district, Northern Cape Province, RSA, and placed in a Costar 96-well block (Thermo Fisher Scientific, Johannesburg, RSA). These samples were frozen in liquid nitrogen until analysis at the University of Pretoria for potential mutations in *EPSPS*, *ALS*, and *PPX2* (*protoporphyrinogen oxidase 2* that is involved in conferring resistance to PPO inhibitors). For DNA extraction, leaf tissues were frozen in liquid nitrogen and ground into a fine powder using a sterile mortar and pestle. Genomic DNA was extracted using the Quick DNA™ Plant/Seed Miniprep Kit (Zymo Research, Inqaba, RSA) according to the manufacturer's protocol. DNA quantification was done using a Nanodrop™ 2000 spectrophotometer (Thermo Fisher Scientific) and quality

checked using 1% agarose gel electrophoresis. Target sites were amplified by polymerase chain reaction (PCR) in a Boeco TC-PRO (Boeco, Hamburg, Germany) thermocycler. Each PCR reaction contained 1× DreamTaq PCR Master Mix (Thermo Fisher Scientific), 400 nM each of the forward and reverse primers (Whitehead Scientific, Johannesburg, RSA), 50 ng of gDNA, and 10 µl of dH<sub>2</sub>O to a total volume of 25 µl. Thermoprofile conditions consisted of initial denaturation at 94 C for 5 min for all three genes tested; followed by 30 cycles of denaturation at 94 C for 30 s for all three genes (see Table 2), annealing (60 C for 30 s for *EPSPS*, 59 C for 30 s for *ALS*, and 62 C for 30 s to detect ΔG210 in *PPX2*), and extension at 72 C for 1 min for all three genes; and a final extension at 72 C for 10 min. The PCR products were confirmed by 1% agarose gel electrophoresis, and the desired DNA bands were excised and purified using a ZymoClean™ Gel DNA Recovery kit (Zymo Research, Inqaba, RSA). Purified PCR products of *EPSPS* and *ALS* were sequenced directly using Sanger sequencing at the African Centre for Gene Technologies (ACGT) sequencing facility at the University of Pretoria, Hatfield, RSA. Analysis and alignment of the sequences was carried out using CLC Genomic Workbench 8.0.1 (CLC Bio, Aarhus, Denmark). For the *PPX2* amplified fragment, purified PCR products were ligated into the linearized pMiniT 2.0 vector using an NEB PCR cloning kit (New England Biolabs, Inqaba, RSA) and grown on the stable outgrowth medium provided with the kit at 37 C for 60 min with shaking at 250 rpm. The outgrowth was spread onto Luria Broth (LB) 100 µg ml<sup>-1</sup> ampicillin plates (1% tryptone, 10 g L<sup>-1</sup> yeast extract, 0.5% NaCl, and 1.5% agar; Sigma-Aldrich, St Louis, MO, USA) and incubated at 37 C overnight. The insert DNA was screened by colony PCR. Plasmid DNA from PCR-confirmed colonies was extracted using a Qiagen™ Miniplasmid purification kit (Qiagen, Hilden, Germany) and sequenced using Sanger sequencing at the ACGT DNA sequencing facility at the University of Pretoria.

For the Arg-98-Met and Arg-98-Gly mutation screening in the *PPX2* target site, a dCAPS (derived cleaved amplified polymorphic sequences) assay developed by Giacomini et al. (2017) was used. The dCAPS assay allows for rapid genotyping, by gel electrophoresis, of the presence or absence of two Arg-98 mutations based on restriction enzyme digestion of PCR fragments. The dCAPS involved a nested PCR carried out with an initial amplification using primers dCAPS-98-F and G210-R to amplify a 1,600-bp product (Table 2). A second PCR was carried using the dCAPS primer dCAPS-98-F and the reverse primers dCAPS-98-R1 and dCAPS-98-R2, which are specific to Arg-98-Met and Arg-98-Gly, respectively (Table 2), to amplify ~500-bp fragments. The PCR reactions consisted of 1× DreamTaq master mix (Thermo Fisher Scientific), 400 nM of each primer (Integrated DNA

**Table 2.** Target genes, their targeted sites of action, and polymerase chain reaction (PCR) primers used in the analysis.

Target gene	Targeted site (codons)	PCR primers
<i>EPSPS</i>	102 and 106	F: ATGTTGGACGCTCTCAGAACTCTTGGT; R: TGAATTTCTCCAGCAACGGCAA
<i>ALS</i>	CAD-197	CAD-F: CCAGAAAGGTTGCGATGTTG; CAD-R: AATCAAACAGGTCCAGGTC;
	BE-574 and BE-653	BE-F: GAGAATCTCCCGTTAAATCATGC; BE-R: GCCCTTCTCCATCACCCCTC
<i>PPX2</i>	98	dCAPS-98-F: CTTGGGATACGTGAGAAGCAACAGTTG; dCAPS-98-R1 (Arg-98-Met): TAGCAACGGAAGACCATCTCTATCTAGGTAC; dCAPS-98-R2 (Arg-98-Gly): TAGCAACGGAAGACCATCTCTATCTATGAAG
	210	G210F: TGATTATGTTATTGACCCCTTTTGTGGC; G210R: GAGGGAGTATAATTTATTTACAACCTCCAGAA



Technology, Capetown, RSA), 9.5 µl of dH<sub>2</sub>O, and 20 to 50 ng of gDNA to a total volume of 20 µl. Thermoprofile conditions were as follows: initial denaturation at 94 C for 5 min; 30 cycles of denaturation at 94 C for 30 s, annealing at 56 C for 30 s, and elongation at 72 C for 1 min followed by final elongation at 72 C for 10 min; and hold at 4 C for 59 min using a Boeco TC-PRO thermocycler. The resulting PCR product was mixed with 1 unit of *KpnI* restriction enzyme to specifically detect the Arg-98-Met mutation or with *HindIII* to specifically detect the Arg-98-Gly mutation in a 1× FastDigest buffer (Thermo Fischer Scientific). Negative controls containing the PCR products and 1× FastDigest Buffer without the restriction enzyme were also prepared for all samples. All reactions were incubated at 37 C for 2 h for complete digestion. The digested reactions were analyzed by agarose (4%) gel electrophoresis using the following criteria: fully digested products were scored as wild type, partially digested were scored as heterozygous, and undigested products were scored as homozygous for the specific targeted mutation.

### Assessment of EPSPS Copy Number

The same DNA samples used for target-gene sequencing described were tested for the relative copy number of *EPSPS* using quantitative real-time PCR (CFX96 Touch™, Bio-Rad, Johannesburg, RSA) as described by Gaines et al. (2010), with *ALS* used as a single-copy reference. Relative quantification was carried out as described by Gaines et al. (2010) using a modification of the 2<sup>-ΔΔCt</sup> method (Ct = cycle threshold). Relative quantification was expressed as ΔCt = (Ct of *EPSPS* – Ct of *ALS*), and 2<sup>ΔCt</sup> was calculated to obtain a relative increase in *EPSPS* copy number.

## Results and Discussion

### Response of *Amaranthus palmeri* AMAPA-NC Population to Preemergence Herbicides

Progeny of AMAPA-NC survivors from a glyphosate-treated cotton field were tested for efficacy against five preemergence herbicides representing three diverse SOAs (represented by HRAC Groups 15, 12, and 27; Table 1) that were known to offer good residual control of *Amaranthus* species in the RSA.

### Response to Group 15 Herbicides

Among the three VLCFA inhibitors (Group 15) tested, *S*-metolachlor and acetochlor belong to the chloroacetamide chemical family, while pyroxasulfone belongs to the pyrazole class (HRAC

2021). Greenhouse screening of these herbicides on the *A. palmeri* population revealed differential efficacies, with *S*-metolachlor showing markedly reduced control (60% control) at the 1× (label) rate of 1,100 g ae ha<sup>-1</sup>; Table 3; Figure 1A) at 16 DAT, while acetochlor and pyroxasulfone were effective with 100% and 95% control, respectively, at the 1× rate (1,500 and 120 g ae ha<sup>-1</sup>, respectively) (Table 3). Interestingly, all three herbicides were effective at both the 2× and 4× rates (Table 3). At the sublethal rates of 1/4× and 1/2×, similar trends were observed, with *S*-metolachlor providing 0% and 20% control, respectively, while acetochlor provided 97% control at both sublethal rates and pyroxasulfone gave 87% and 88% control, respectively (Table 3; Figure 1B). Based on these results, acetochlor and pyroxasulfone are still effective weed control options, while careful consideration should be given to diversify their use to minimize further selection for *S*-metolachlor resistance in this population.

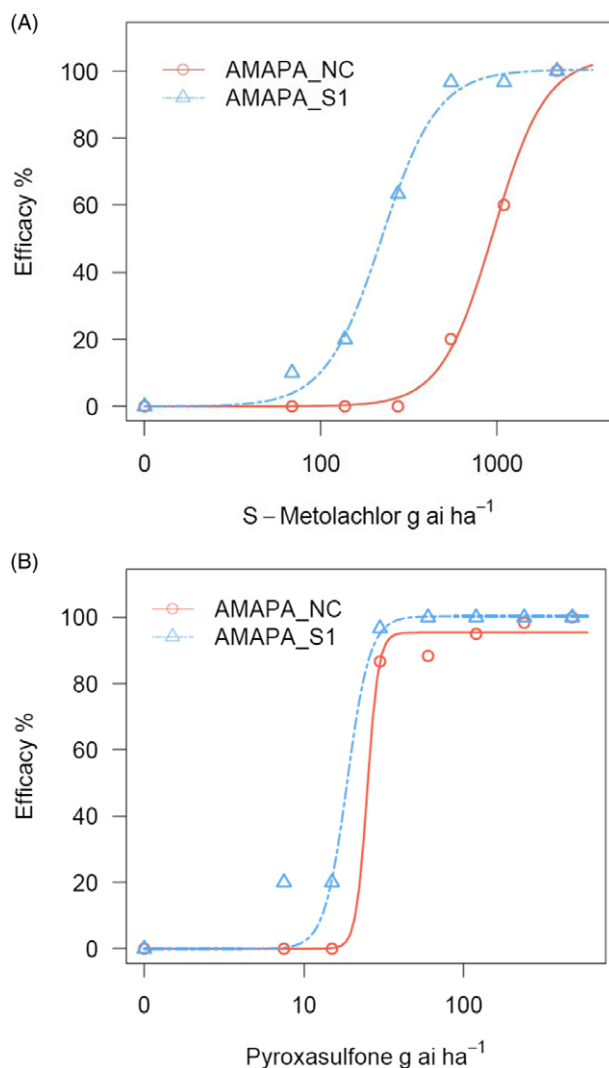
The reduction in sensitivity to *S*-metolachlor in *A. palmeri* species (Brabham et al. 2019; Rangani et al. 2021) and differential response to herbicides within SOA Group 15 were previously reported (Brabham et al. 2019). Based on published studies, the mechanism of resistance to Group 15 herbicides in weedy species is largely attributed to non-target site resistance (NTSR), also referred to as metabolic resistance (Brabham et al. 2019; Busi et al. 2018; Dücker et al. 2019a, 2019b; Rangani et al. 2021; Strom et al. 2020, 2021). It is postulated that target-site modification is an unlikely mechanism for resistance to Group 15 herbicides in crops and weedy species due to multiple SOAs represented by different enzymes involved in VLCFA synthesis (Busi et al. 2014; Rangani et al. 2021). The NTSR mechanism imparting resistance to *S*-metolachlor in *A. palmeri* was previously reported to be due to glutathione-*S*-transferase (GST) detoxification in the roots (Rangani et al. 2021) as well as cytochrome P450-mediated metabolism (Rigon et al. 2020; Strom et al. 2020, 2021). The differential specific activity of expressed *Arabidopsis* GST (*AtGSTU19*) gene homologues, which conjugate with acetochlor eight times higher compared with *S*-metolachlor, might explain the differences in sensitivity between these herbicides, but this mechanism needs further investigation (DeRidder et al. 2002). In addition, a study comparing tolerant and susceptible maize lines showed that the *GST* genes *ZmGST5* and *ZmGST6* were responsible for differential tolerance to *S*-metolachlor (Li et al. 2017). Similarly, *S*-metolachlor-resistant *A. tuberculatus* populations were shown to exhibit >2-fold GST activity compared with a susceptible population but much less than in tolerant maize. Conversely, cytochrome P450 activity in resistant *A. tuberculatus* was found to be >20-fold higher than in susceptible *A. tuberculatus* or maize

**Table 3.** Preemergence herbicides assessed, site-of-action (SOA) group, and efficacy against an *Amaranthus palmeri* population (AMAPA-NC) in South Africa.

Preemergence herbicide	SOA group	Herbicide rate <sup>a</sup>							P-values (LD <sub>50</sub> ) <sup>b</sup>
		4×	2×	1× <sup>b</sup>	1/2×	1/4×	1/8×	1/16×	
		Average % control							
<i>S</i> -metolachlor	15	100 (0)	100 (0)	60 (10)	20 (0)	0 (0)	0 (0)	0 (0)	< 0.001
Acetochlor	15	100 (0)	100 (0)	100 (0)	97 (1.7)	97 (3.3)	10 (0)	37 (26.7)	N/A
Pyroxasulfone	15	100 (0)	98 (1.7)	95 (0)	88 (4.5)	87 (6.7)	0 (0)	0 (0)	0.511
Isoxaflutole	27	100 (0)	100 (0)	100 (0)	100 (0)	100 (0)	90 (5.8)	63 (13.3)	N/A
Diflufenican	12	100 (0)	100 (0)	98 (1.7)	98 (1.7)	100 (0)	90 (0)	93 (1.7)	0.812

<sup>a</sup>1× represents the label rate for each herbicide as registered in Germany. Values in parentheses indicate SE for each treatment.

<sup>b</sup>LD<sub>50</sub> is the dose causing 50% reduction in survival. N/A, not applicable.



**Figure 1.** Percent efficacy at various dose levels of S-metolachlor (A) and pyroxasulfone (B) treatments (preemergence application) applied to the *Amaranthus palmeri* population AMAPA-NC found in the Republic of South Africa, and a sensitive population, AMAPA-S1 (Shickley, NE, USA). Efficacy was assessed at 25 d after treatment. Dose–response analysis was conducted using a three-parameter log-logistic model using the *drc* package in R software per Seefeldt et al. (1995).

(Strom et al. 2021). Reduction in efficacy to S-metolachlor warrants careful resistance management of the *A. palmeri* AMAPA-NC population, because Group 15 herbicides are labeled for use in numerous crops for residual control of annual grasses and small-seeded broadleaf weeds.

#### Response to Isoxaflutole (Group 27) and Diflufenican (Group 12) Herbicides

Greenhouse screening of the *A. palmeri* AMAPA-NC population for efficacy against two other important preemergence herbicides, isoxaflutole and diflufenican, showed excellent control (~100%) at various rates, including at sublethal rates as low as 1/4× the label rate (Table 3). Interestingly, at a very low sublethal rate of 1/8×, good control (90%) was achieved with both these herbicides (Table 3). Results indicated high sensitivity of this *A. palmeri* population under greenhouse conditions to these herbicides, which therefore provide an excellent preemergence herbicide treatment option for growers to manage this population. Herbicidal

selectivity of diflufenican in weed species was shown to be primarily due to differential uptake and indirectly to translocation (Haynes and Kirkwood 1992). However, it is known that isoxaflutole herbicide provides better control under field conditions when combined with an additional SOA that is efficacious against *A. palmeri* than as a stand-alone product (O'Brien et al. 2018; Spaunhorst and Johnson 2017).

Globally, there are two reported cases of resistance to isoxaflutole, namely, *A. tuberculatus* in the United States, which is also resistant to ALS inhibitors, atrazine, glyphosate, and mesotrione, and wild radish (*Raphanus raphanistrum* L.) in Australia, which is also resistant to diflufenican, chlorsulfuron, atrazine, fluridone, 2,4-D, mesotrione, and tembotrione (Heap 2022). Hitherto, there has been no reported resistance to isoxaflutole in *A. palmeri* (Heap 2022). Resistance to diflufenican herbicide was reported in four weed species—*R. raphanistrum*, Oriental mustard (*Sisymbrium orientale* L.), and capeweed [*Arctotheca calendula* (L.) Levyns] in Australia and eastern groundsel (*Senecio vernalis* Waldst. & Kit.) in Israel. Resistance to diflufenican in *R. raphanistrum* was reported to be due to its metabolism involving cytochrome P450s (Lu et al. 2020b). Three of the four diflufenican-resistant weed species (all except *S. orientale*) were also resistant to at least one additional SOA (Heap 2022).

#### Response of *Amaranthus palmeri* AMAPA-NC Population to Postemergence Herbicides

Survival of *A. palmeri* plants after treatment with different postemergence herbicides was highly variable, indicating the considerable genetic variability of the AMAPA-NC population. Overall, 5 of the 11 postemergence herbicides tested showed less than 90% control at the label rate (Table 4). The lowest level of control was found for saflufenacil (33%) followed by glyphosate (60%) at their respective label rates; however, glufosinate, metribuzin, tembotrione, 2,4-D, and acifluorfen showed 100% control at the label rate. Note that acifluorfen, to our knowledge, is not yet registered in the RSA.

In response to glyphosate (EPSPS inhibitor; Group 9) treatment, *A. palmeri* AMAPA-NC population showed significantly reduced sensitivity at all doses tested, ranging from 80% control at 4× the label rate (800 g ae ha<sup>-1</sup>) to 60% control at the label rate. No control was observed at 2× the label rate and any of the sublethal doses tested (Table 4; Figure 2A). The unexpected trend between 1× (60% control) and 2× (no control) could be due to genetic variability from segregating population for the glyphosate resistance. The lack of control at the label rate is consistent with the survival of *A. palmeri* in the glyphosate-treated field from which its seeds were originally collected. The inclusion of glyphosate in glyphosate-tolerant maize, soybean, and cotton cultivation systems plays an important role in weed control in the RSA and accelerated the popularity of conservation tillage (Gouse 2014). Therefore, it is critical to manage weeds with glyphosate-resistance issues with the aim to preserve the continued benefits of glyphosate for weed control as well as for the other benefits of reduced-tillage practices, including maintenance of soil organic matter and beneficial insects, increased soil water-holding capacity, reduced soil and nutrient loss from the field, reduced soil compaction, and less time and labor required to prepare the field for planting (Duke and Powles 2008; Kudsk and Mathiassen 2020). Resistance to glyphosate in *A. palmeri* is widespread and well documented (Dominguez-Valenzuela et al. 2017; Heap 2022; Kaundun et al. 2019; Küpper et al. 2017; Norsworthy et al. 2008; Steckel et al. 2008).

**Table 4.** Postemergence herbicides assessed, site-of-action (SOA) group, and efficacy against an *Amaranthus palmeri* population (AMAPA-NC) in South Africa.

Postemergence herbicide	SOA group	Herbicide rate <sup>a</sup>							P-value (LD <sub>50</sub> ) <sup>b</sup>
		4×	2×	1×	1/2×	1/4×	1/8×	1/16×	
		Average % control							
Glyphosate	9	80 (20)	0 (0)	60 (30.6)	0 (0)	0 (0)	0 (0)	0 (0)	0.582
Glufosinate	10	100 (0)	100 (0)	100 (0)	100 (0)	93 (6.7)	27 (26.7)	0 (0)	0.464
Chlorimuron	2	100 (0)	100 (0)	80 (0)	0 (0)	13 (13.3)	0 (0)	0 (0)	0.367
Mesotrione	27	100 (0)	100 (0)	73 (6.7)	27 (6.7)	0 (0)	0 (0)	0 (0)	< 0.001
Tembotrione	27	100 (0)	100 (0)	100 (0)	47 (6.7)	8 (6.7)	0 (0)	0 (0)	< 0.05
Atrazine	5	100 (0)	87 (6.7)	80 (11.5)	47 (20)	33 (33.3)	0 (0)	0 (0)	0.204
Metribuzin	5	100 (0)	100 (0)	100 (0)	80 (11.5)	53 (29.1)	0 (0)	0 (0)	0.969
2,4-D	4	100 (0)	97 (6.7)	100 (0)	47 (6.7)	33 (33.3)	0 (0)	0 (0)	0.337
Dicamba	4	100 (0)	100 (0)	93 (6.7)	93 (6.7)	80 (0)	93 (6.7)	47 (17.6)	0.635
Saflufenacil	14	87 (6.7)	40 (11.5)	33 (24)	47 (17.6)	0 (0)	0 (0)	0 (0)	0.048
Acifluorfen	14	100 (0)	100 (0)	100 (0)	93 (6.7)	87 (13.3)	53 (17.6)	0 (0)	0.008

<sup>a</sup>1× represents the label rate for each herbicide as registered in Germany. Values in parentheses indicate SE for each treatment.

<sup>b</sup>LD<sub>50</sub> is the dose causing 50% reduction in survival.

The efficacy of chlorimuron-ethyl, an ALS-inhibiting herbicide (Group 2), showed variation ranging from 100% control at both 2× and 4× the label rate and 80% control at the label rate (18 g ae ha<sup>-1</sup>), to little or no control at all of the sublethal rates tested (Table 4; Figure 2B). Resistance to ALS inhibitors in *A. palmeri* populations is widely reported (Burgos et al. 2001; Heap 2022; Singh et al. 2019; Wise et al. 2009), and as of January 2022, there were 167 cases of weed species documented to be resistant to ALS inhibitors globally (Heap 2022). Herbicidal efficacy similar to that of chlorimuron-ethyl (70% to 80% control at the label rate) was observed for mesotrione (HPPD inhibitor; Group 27) and atrazine (PS II inhibitor; Group 5), with the exception that atrazine also showed reduced control (87%) at 2× the label rate in the AMAPA-NC population (Table 4; Figure 2C and E). Interestingly, metribuzin (another Group 5 herbicide) was significantly more effective than atrazine (Table 4; Figure 2F), indicating the possibility of NTSR mechanisms such as reduced absorption and/or translocation, increased sequestration, and enhanced metabolic degradation (Rigon et al. 2020). Among these NTSR mechanisms, metabolism-based herbicide resistance represents a major threat, because it can impart resistance to herbicides from varied chemical classes across several mechanisms of action (Rigon et al. 2020; Yu and Powles 2014). The large and ubiquitous family of cytochrome P450 monooxygenase (P450) enzymes are implicated in increased herbicide metabolism as a mechanism of resistance in certain weed species (Cobb and Reade 2010; Katagi and Mikami 2000). GSTs are a superfamily of enzymes that catalyze the conjugation of various substances, including herbicides, to the tripeptide glutathione (GSH) (Cobb and Reade 2010). GSTs have been implicated in resistance to atrazine in velvetleaf (*Abutilon theophrasti* Medik.) (Devine and Preston 2000) and *A. tuberculatus* (Ma et al. 2013), and the P450 system confers resistance to metribuzin and simazine in rigid ryegrass (*Lolium rigidum* Gaudin). Anderson and Gronwald (1991), Gray et al. (1996), and Nakka et al. (2017a) also suggested a role for GSTs in the metabolism of atrazine. GST-mediated metabolism reportedly also contributes to trifluralin resistance in *A. palmeri* (González-Torralva and Norsworthy 2021; Gossett et al. 1992).

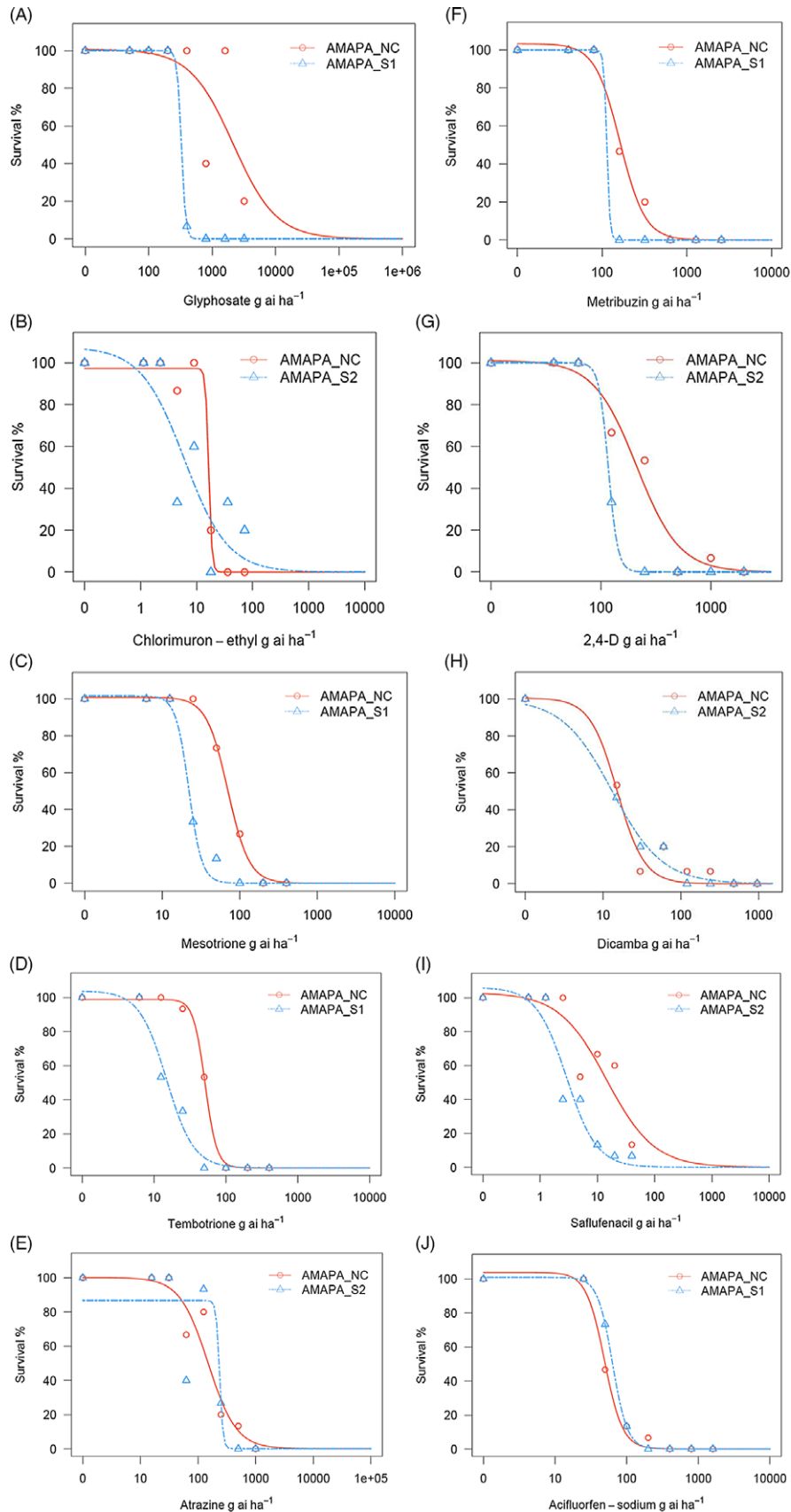
Interestingly, another Group 27 herbicide, tembotrione, provided full control at the label rate or higher, indicating differential efficacies between mesotrione and tembotrione; this is in contrast to a report that showed cross-resistance between these herbicides belonging to the same triketone chemical family in an

*A. tuberculatus* population (Kaundun et al. 2017). However, reduction in sensitivity was also seen for tembotrione at sublethal rates in the AMAPA-NC population (Table 4; Figure 2D). Increased target-site gene expression and higher HPPD protein levels have been shown to contribute to mesotrione resistance in *A. palmeri* (Betha et al. 2017; Nakka et al. 2017b); however, these data included a limited number of individual plants with high variability (Kaundun et al. 2017). Metabolic resistance via rapid detoxification of mesotrione, coupled with increased HPPD gene expression, has been reported in *A. palmeri* (Nakka et al. 2017b; Thompson et al. 2012), and these mechanisms were also found to be involved in cross-resistance to HPPD-inhibiting herbicides in a *R. raphanistrum* population in Australia that is also resistant to atrazine, chlorsulfuron, diflufenican, and 2,4-D (Lu et al. 2020a). Metabolic resistance through the activity of cytochrome P450 enzymes is implicated in tembotrione metabolism in *A. palmeri* (Küpper et al. 2018b). Cytochrome P450 involvement in rapid detoxification resulting in limited translocation of mesotrione has been demonstrated as a resistance mechanism in an *A. tuberculatus* biotype in Nebraska, USA (Kaundun et al. 2017) and another *A. tuberculatus* biotype in Illinois, USA (Ma et al. 2013).

The greatest reduction in *A. palmeri* control among the herbicides tested was observed for saflufenacil (PPO inhibitor; Group 14) (Table 4; Figure 2I). It showed less than 50% control at the 2×, 1×, and 1/2× rates and no control at any of the other sublethal doses tested, indicating potential resistance to saflufenacil. However, acifluorfen, a Group 14 herbicide that is not yet registered in the RSA, showed excellent control of the AMAPA-NC population (Table 4; Figure 2J). The differential response between saflufenacil and acifluorfen could be due to differences in their chemical family (*N*-phenyl-amides and diphenyl ethers, respectively) and/or due to no history of exposure to acifluorfen, despite both being Group 14 herbicides (HRAC 2021). Resistance to both saflufenacil and acifluorfen has been reported in wild poinsettia (*Euphorbia heterophylla* L.) in Brazil (Heap 2022).

Many of the postemergence herbicides were effective in controlling the AMAPA-NC population (Table 4). Glufosinate (Group 10) is a nonselective, fast-acting postemergence herbicide and was shown to be highly effective at various application rates, including 1/2× the label rate, to control the AMAPA-NC population (Table 4). However, the use of glufosinate as a postemergence, in-crop treatment to manage weeds, including *A. palmeri*, would require glufosinate-tolerant crops (Hoffner et al. 2012).





**Figure 2.** Percent survivors at various dose levels of postemergence herbicides including glyphosate (A), chlorimuron-ethyl (B), mesotrione (C), tembotrione (D), atrazine (E), metribuzin (F), 2,4-D (G), dicamba (H), saflufenacil (I), and acifluorfen-sodium (J) applied to the *Amaranthus palmeri* population AMAPA-NC, found in the Republic of South Africa, and to two sensitive populations, AMAPA-S1 (Shickley, NE, USA) and AMAPA-S2 (Macon, GA, USA). Each herbicide treatment included seven different rates. Visual survival rating was assessed at 16 d after treatment. Dose-response analysis was conducted using a three-parameter log-logistic model using the *drc* package in R software per Seefeldt et al. (1995).

Recently, a biotype of *A. palmeri* was reported to be resistant to glufosinate in the United States (Heap 2022). Previously, resistance to glufosinate had been reported in biotypes of *Lolium* spp. and goosegrass [*Eleusine indica* (L.) Gaertn.] grass weeds (Heap 2022). Resistance to glufosinate in *Lolium* spp. was shown to be due to a target-site mutation at the plastidic *glutamate synthase 2* (*GS2*) gene resulting in an aspartic acid to asparagine change at amino acid position 171 (Avila-Garcia et al. 2012). However, the exact mechanism(s) of resistance to glufosinate in *E. indica* remains unknown (Jalaludin et al. 2017).

Auxin mimic (Group 4) herbicides, including 2,4-D and dicamba, which belong to the phenoxy-carboxylates and benzozates, respectively, exhibited good control at and above the label rates (Table 4; Figure 2G and H). Dicamba showed >90% control at 1/2× the label rate, while reduction in sensitivity was observed for 2,4-D at 1/2× the label rate (Table 4; Figure 2G). A total of nine broadleaf weed species worldwide have been confirmed to be resistant to dicamba to date—a population of *A. palmeri*, prickly lettuce (*Lactuca serriola* L.), and several populations of *B. scoparia* in the United States; a population of *R. raphanistrum* in Australia; lambsquarters (*Chenopodium album* L.) in New Zealand; common hempnettle (*Galeopsis tetrahit* L.), *B. scoparia*, and wild mustard (*Sinapis arvensis* L.) in Canada; *A. hybridus* in Argentina; *S. arvensis* in Turkey; and bachelor's button/cornflower (*Centaurea cyanus* L.) in Poland (Heap 2022). For 2,4-D, a total of 26 broadleaf weeds were reported to be resistant worldwide, including some of the *Amaranthus* species (*A. palmeri* and *A. tuberculatus* in the United States; *A. hybridus* in Argentina) (Heap 2022; Kumar et al. 2019). Mutations that reduce the binding of synthetic auxin herbicides to a receptor protein (auxin-binding proteins [auxin F-box proteins or AFB]) and to a co-receptor protein (indole-3-acetic acid or Aux/IAA protein) have been shown to confer resistance in weeds, as in the case of *S. arvensis* (Gaines et al. 2020; Webb and Hall 1995). In a recent study, it was demonstrated that a single amino acid change in IAA16 protein in *B. scoparia* could result in cross-resistance to dicamba, 2,4-D, and fluroxypyr herbicides (LeClere et al. 2018). Weed control by use of herbicides within integrated weed management programs must meet a minimum control standard (80% for direct field treatments at the recommended rate) to be accepted by farmers (Frans et al. 1986; Nunes et al. 2007). Overall, our results indicated that tembotrione (Group 27), metribuzin (Group 5), acifluorfen (Group 4), 2,4-D and dicamba (Group 4), and glufosinate (Group 10) are highly effective postemergence herbicides to be considered in a weed management program to control the AMAPA-NC population, while unsatisfactory control can be expected with single-SOA treatments applied postemergence with glyphosate (Group 9), chlorimuron-ethyl (group 2), mesotrione (Group 27), atrazine (Group 5), and saflufenacil (Group 14).

It is generally accepted that SOA diversity in herbicide programs is a key driver for successful resistance management (Beckie 2020; Busi et al. 2020; Comont et al. 2020; Evans and Joshi 2016). While the current study was focused on understanding sensitivities to key herbicides individually, it is important to diversify weed management programs with effective herbicides with different SOAs used in mixtures or in rotation as key tools in resistance management strategies. The herbicide sensitivity profiling of the AMAPA-NC Palmer amaranth population from our study was broadly shared in the RSA via industry groups, universities, and government agencies to create awareness (CropLife South Africa 2019) as well as to support further on-farm research

to explore combination of SOAs for effective control. Mixtures of effective herbicides with different SOAs do not prevent the evolution of resistance but have the potential to delay it relative to repeated use of a single herbicide. In addition, herbicide mixtures will also suppress weed populations that are already resistant to herbicides with some SOAs, thereby further delaying the economic impacts of resistance (Busi et al. 2020; Comont et al. 2020; Diggle et al. 2003; Evans et al. 2016; Liu et al. 2020).

### Molecular Characterization of Potential Target-Site Resistance

To identify potential molecular mechanisms for resistance and/or reduced sensitivity to certain herbicides observed in the AMAPA-NC population (Tables 3 and 4), we carried out gene sequencing of target-site mutations that were previously shown to confer resistance to glyphosate (EPSPS), chlorimuron-ethyl (ALS), atrazine (PS II), and saflufenacil (PPO).

#### No Known Target-Site Mutations Were Found in EPSPS

EPSPS gene amplification through PCR from 20 individual plants of the AMAPA-NC population produced an expected 195-bp fragment encompassing EPSPS codons 102, 103, and 106. Gene sequencing of the PCR-amplified EPSPS nucleotide sequences showed 100% homology with previously published *A. palmeri* data (e.g., GenBank references: ACV53021.1 and ACV53022.1), confirming the identity of the EPSPS fragment. The EPSPS sequence comparison between AMAPA-NC and the susceptible reference sequences (Figure 3) showed none of the previously reported mutations in codons 102, 103, or 106 (Li et al. 2018; Perotti et al. 2019; Sammons and Gaines 2014; Yu et al. 2015), indicating that the resistance to glyphosate observed in this population (Table 4; Figure 2A) is not likely due to the known target-site mutations in the EPSPS gene.

#### Elevated Levels of EPSPS Gene Copy Number

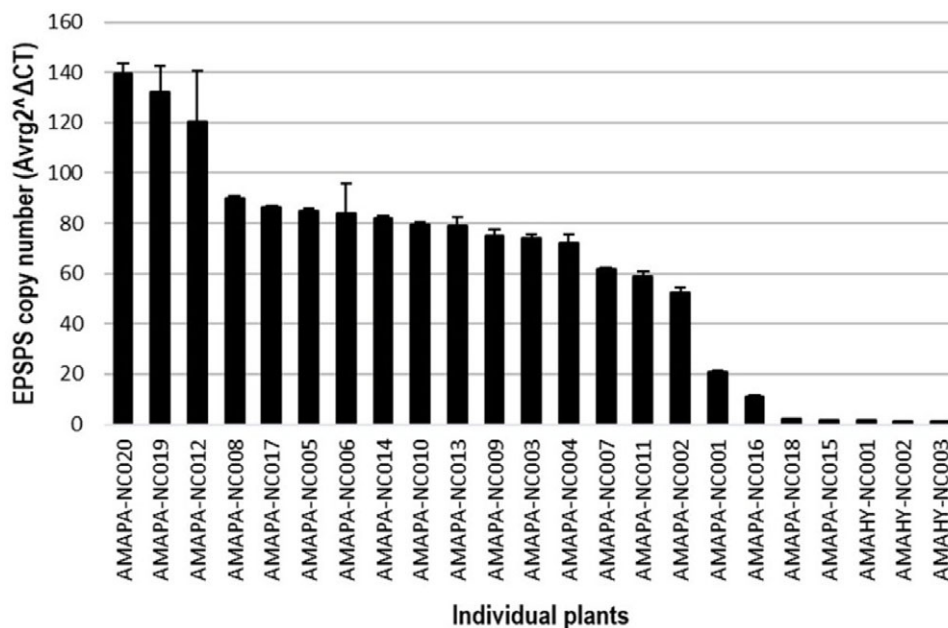
To further dissect the potential mechanism of resistance to glyphosate, we used quantitative RT-PCR to measure relative genomic copy numbers of the EPSPS gene relative to the ALS gene (single-copy control) in 20 individual AMAPA-NC plants. *Amaranthus hybridus* plants collected at the same site were used as susceptible control plants with one EPSPS copy. Genomic EPSPS copy numbers relative to ALS copy number ranged from 2 to 140 (decimals rounded off to the nearest integer) in the AMAPA-NC population, with an average gene copy number of 75 (Figure 4), while the susceptible *A. hybridus* plants ("AMAHY") had a relative copy number of 1. High EPSPS gene copy number is considered to be a mechanism of resistance to glyphosate in *A. palmeri* (Gaines et al. 2010) and other weed species, including monocots and dicots (Patterson et al. 2018; Powles 2010). High EPSPS copy number in *A. palmeri*, a diploid weed species (Rayburn et al. 2005), has been shown to be due to extrachromosomal circular DNA containing the EPSPS gene cassette (Koo et al. 2018b). Our result confirmed that the observed resistance to glyphosate in the AMAPA-NC population (Table 4) is mainly conferred by high EPSPS gene copy number. Because glyphosate bound to the EPSPS protein becomes unavailable, an increase in the EPSPS protein pool will require an equivalent increase in the glyphosate dose needed to cause plant death (Gaines et al. 2010). Previous studies of glyphosate-resistant *A. palmeri* have

```

50          60          70          80          90          100         110         120
|...|...|...|...|...|...|...|...|...|...|...|...|...|...|
ACV53021.1 DILYMLDALRTLGLKVEDDSTAKRAVVEGCGGLFPVKGDKGKEEIQFLFLGNAGTAMRPLTAAVAVAGGNSSY
ACV53022.1 DILYMLDALRTLGLKVEDDSTAKRAVVEGCGGLFPVKGDKGKEEIQFLFLGNAGTAMRPLTAAVAVAGGNSSY
AMAPA-NC001 ----MLDALRTLGLKVEDDSTAKRAVVEGCGGLFPVKGDKGKEEIQFLFLGNAGTAMRPLTAAVAVAGGNS--
AMAPA-NC002 ----MLDALRTLGLKVEDDSTAKRAVVEGCGGLFPVKGDKGKEEIQFLFLGNAGTAMRPLTAAVAVAGGNS--
AMAPA-NC003 ----MLDALRTLGLKVEDDSTAKRAVVEGCGGLFPVKGDKGKEEIQFLFLGNAGTAMRPLTAAVAVAGGNS--
AMAPA-NC004 ----MLDALRTLGLKVEDDSTAKRAVVEGCGGLFPVKGDKGKEEIQFLFLGNAGTAMRPLTAAVAVAGGNS--
AMAPA-NC005 ----MLDALRTLGLKVEDDSTAKRAVVEGCGGLFPVKGDKGKEEIQFLFLGNAGTAMRPLTAAVAVAGGNS--
AMAPA-NC006 ----MLDALRTLGLKVEDDSTAKRAVVEGCGGLFPVKGDKGKEEIQFLFLGNAGTAMRPLTAAVAVAGGNS--
AMAPA-NC007 ----MLDALRTLGLKVEDDSTAKRAVVEGCGGLFPVKGDKGKEEIQFLFLGNAGTAMRPLTAAVAVAGGNS--
AMAPA-NC008 ----MLDALRTLGLKVEDDSTAKRAVVEGCGGLFPVKGDKGKEEIQFLFLGNAGTAMRPLTAAVAVAGGNS--
AMAPA-NC009 ----MLDALRTLGLKVEDDSTAKRAVVEGCGGLFPVKGDKGKEEIQFLFLGNAGTAMRPLTAAVAVAGGNS--
AMAPA-NC010 ----MLDALRTLGLKVEDDSTAKRAVVEGCGGLFPVKGDKGKEEIQFLFLGNAGTAMRPLTAAVAVAGGNS--
AMAPA-NC011 ----MLDALRTLGLKVEDDSTAKRAVVEGCGGLFPVKGDKGKEEIQFLFLGNAGTAMRPLTAAVAVAGGNS--
AMAPA-NC012 ----MLDALRTLGLKVEDDSTAKRAVVEGCGGLFPVKGDKGKEEIQFLFLGNAGTAMRPLTAAVAVAGGNS--
AMAPA-NC013 ----MLDALRTLGLKVEDDSTAKRAVVEGCGGLFPVKGDKGKEEIQFLFLGNAGTAMRPLTAAVAVAGGNS--
AMAPA-NC014 ----MLDALRTLGLKVEDDSTAKRAVVEGCGGLFPVKGDKGKEEIQFLFLGNAGTAMRPLTAAVAVAGGNS--
AMAPA-NC015 ----MLDALRTLGLKVEDDSTAKRAVVEGCGGLFPVKGDKGKEEIQFLFLGNAGTAMRPLTAAVAVAGGNS--
AMAPA-NC016 ----MLDALRTLGLKVEDDSTAKRAVVEGCGGLFPVKGDKGKEEIQFLFLGNAGTAMRPLTAAVAVAGGNS--
AMAPA-NC017 ----MLDALRTLGLKVEDDSTAKRAVVEGCGGLFPVKGDKGKEEIQFLFLGNAGTAMRPLTAAVAVAGGNS--
AMAPA-NC018 ----MLDALRTLGLKVEDDSTAKRAVVEGCGGLFPVKGDKGKEEIQFLFLGNAGTAMRPLTAAVAVAGGNS--
AMAPA-NC019 ----MLDALRTLGLKVEDDSTAKRAVVEGCGGLFPVKGDKGKEEIQFLFLGNAGTAMRPLTAAVAVAGGNS--
AMAPA-NC020 ----MLDALRTLGLKVEDDSTAKRAVVEGCGGLFPVKGDKGKEEIQFLFLGNAGTAMRPLTAAVAVAGGNS--

```

**Figure 3.** Translated protein sequence of the *Amaranthus palmeri* EPSPS gene sequence. Thr102, Ala103, and Pro106 are highlighted in red, showing no target-site mutations in the plants investigated.



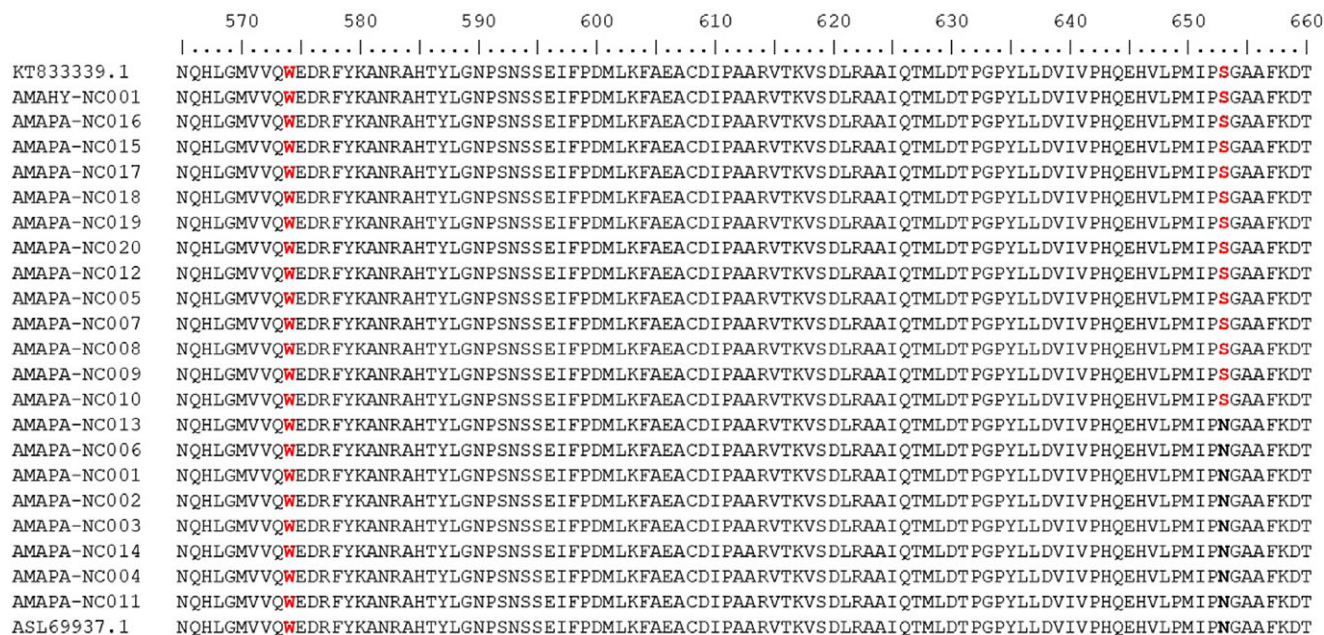
**Figure 4.** EPSPS gene copy number in *Amaranthus palmeri* plants of the AMAPA-NC population and in glyphosate-susceptible *Amaranthus hybridus* (AMAHY) plants collected at the same site.

reported EPSPS copy numbers between 30 and 179 (Gaines et al. 2010; Küpper et al. 2017). Küpper et al. (2017) further showed lower levels of accumulated shikimic acid and higher levels of resistance associated with higher EPSPS copy number.

#### Known Ser-653-Asn Target-Site Mutation Found in the ALS Gene

Resistance-conferring mutations in the ALS enzyme occur primarily in two domains: CAD, comprising amino acids 124 to 205





**Figure 5.** Translated protein alignment of the ALS BE domain showing no mutations at position 574 (W) and a subset of plants with mutations at position 653 (Ser-653-Asn).

(based on *Arabidopsis* sequence as a standard); and BE, comprising amino acids 574 to 653 (Shaner 1991; Socorro 2011). PCR amplification of ALS genes from 20 individual plants of the AMAPA-NC *A. palmeri* population resulted in the expected 420-bp fragment for the CAD domain (including target codons 122, 197, and 205) and the expected 340-bp fragment for the BE domain, which included codons 574 and 653. The ALS predicted protein sequence comparison between AMAPA-NC and the susceptible reference sequence of *A. palmeri* (GenBank accession: KT833339.1), a susceptible *A. hybridus* sequence (AMAHY-NC001), and a resistant *A. palmeri* reference sequence (GenBank accession: ASL69937.1) showed no mutations in the CAD domain (data not shown). In the BE domain, no mutations were found at position 574, but for position 653, nearly half (8/20) of the tested plants contained the Ser-653-Asn mutation (Figure 5). This mutation is associated with high levels of resistance to imidazoles and pyrimidinylthiobenzoates and with low levels of resistance to sulfonylureas (Berger et al. 2016; Patzoldt and Tranel 2007; Saari et al. 1994; Tranel and Wright 2002), indicating that the resistance to chlorimuron-ethyl observed in this population (Table 4; Figure 2B) is likely due to the Ser-653-Asn target-site mutation in the ALS gene.

#### No Known Target-Site Mutations Found in PPX2 Gene in Codon 98 or 210

Based on the dCAPS assay (Giacomini et al. 2017), no known point mutations were found in codon 98 (also referred as codon 128) of the PPX2 gene in any of the 19 individual AMAPA-NC plants analyzed (Figure 6). In addition, sequence analysis of the region containing codon 210 did not show any known mutation of the glycine residue (Salas et al. 2016). This indicates that the observed reduced sensitivity to saflufenacil in this population (Table 4; Figure 2I) is not likely due to known target-site mutations in the PPX2 gene. A recently identified PPX2 gene mutation at position 399 with a glycine to alanine substitution (G399A) in *A. palmeri* (Rangani et al.

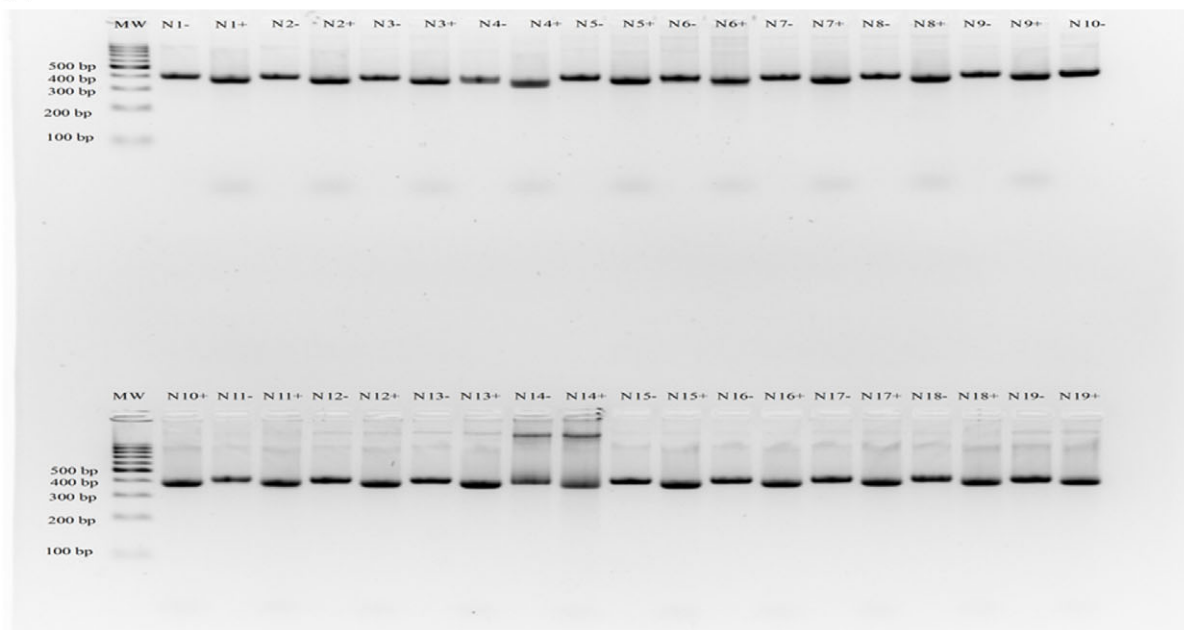
2019) is unlikely to be the cause for saflufenacil resistance in the AMAPA-NC population; first, because the G399A mutation is shown to confer resistance to broad-spectrum PPO inhibitors, including acifluorfen and saflufenacil herbicides. In contrast, we found acifluorfen to be highly effective (100% and 93% control at the label and 1/2X the label rate, respectively; Table 4) compared with the significantly reduced efficacy of saflufenacil (33% control at the label rate). Second, the presence of a G399A mutation in *A. palmeri* population has not always been shown to confer resistance to saflufenacil (Wu et al. 2020). Further evaluation is needed to understand the potential cause of resistance to saflufenacil herbicide in the AMAPA-NC *A. palmeri* population by either analyzing any hitherto unknown target-site mutation/s in the PPX2 gene and/or exploring the role of NTSR for any differential detoxification/metabolism of saflufenacil compared with acifluorfen.

In conclusion, this investigation of a nonnative *A. palmeri* population (AMAPA-NC) in the RSA indicated resistance to chlorimuron-ethyl and glyphosate in this population, while decreased sensitivity was observed at the label rate for mesotrione, atrazine, saflufenacil, and S-metolachlor, and provided insight on mechanisms of resistance to selected herbicides. Moreover, this study provided detailed profiling of various preemergence and postemergence herbicides representing various SOAs that may serve as effective herbicide options in the design of an effective weed management program. Among the preemergence herbicides, acetochlor, isoxaflutole, diflufenican, and pyroxasulfone were found to be effective at controlling the *A. palmeri* AMAPA-NC population, and glufosinate, tembotrione, acifluorfen, dicamba, 2,4-D and metribuzin were effective as postemergence herbicide treatments.

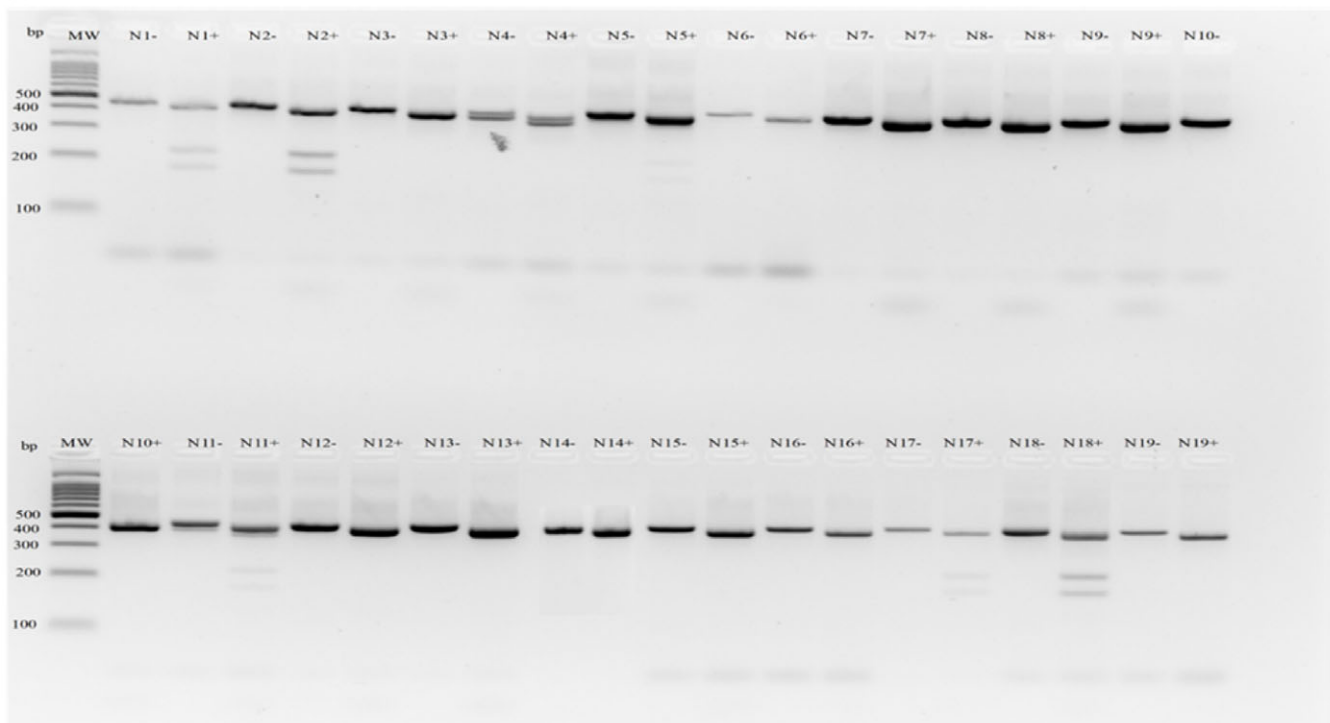
**Acknowledgments.** We thank Graham Head and Aruna Varanasi for their useful comments and critical review of the draft article. CR and JV thank Bayer AG for financial support for the research conducted at the University of Pretoria as part of the South African Herbicide Resistance Initiative. The authors declare no conflict of interest.



(A)



(B)



**Figure 6.** Gel image of dCAPS assay for AMAPA-NC plants collected in the Northern Cape. Accession labels were shortened for clear presentation of results (N1 = AMAPA-NC001, etc.). Both undigested (-) and digested (+) PCR products are shown. (A) Arg-98-Met assay; (B) Arg-98-Gly assay. A 100-bp DNA ladder (MW) (Thermo Fischer Scientific, Johannesburg, RSA) was used, and the PCR products fall between ~400- and 350-bp fragments.

## References

- Anderson M, Gronwald J (1991) Atrazine resistance in velvetleaf (*Abutilon theophrasti*) biotype due to enhanced glutathione *S*-transferase activity. *Plant Physiol* 96:104–109
- Avila-García W, Sanchez-Olguin E, Hulting A, Mallory-Smith C (2012) Target-site mutation associated with glufosinate resistance in Italian ryegrass (*Lolium perenne* L. ssp. *multiflorum*). *Pest Manag Sci* 68:1248–1254

- Beckie HJ (2020) Herbicide resistance in plants. *Plants* 9:435
- Bensch CN, Horak MJ, Peterson D (2003) Interference of redroot pigweed (*Amaranthus retroflexus*), Palmer amaranth (*A. palmeri*), and common waterhemp (*A. rudis*) in soybean. *Weed Sci* 51:37–43
- Berger S, Madeira PT, Ferrell J, Gettys L, Morichetti S, Cantero JJ, Nunez C (2016) Palmer amaranth (*Amaranthus palmeri*) identification and documentation of ALS-resistance in Argentina. *Weed Sci* 64:312–320

- Betha S, Thompson C, Peterson D, Jugulam M (2017) Increased HPPD gene and protein expression contribute significantly to mesotrione resistance in Palmer amaranth (*Amaranthus palmeri*). Proceedings of the Weed Science Society of America Annual Meeting. San Juan, Puerto Rico, February 8–11, 2016. Abstract no. 222
- Bond JA, Oliver LR, Stephenson DO IV (2006) Response of Palmer amaranth (*Amaranthus palmeri*) accessions to glyphosate, fomesafen, and pyriithiobac. Weed Technol 20:885–892
- Botha C (2010) Common Weeds of Crops and Gardens in Southern Africa. 2nd ed. Potchefstroom, Republic of South Africa: Agricultural Research Council and Syngenta. 384 p
- Brabham C, Norsworthy JK, Houston MM, Varanasi VK, Barber T (2019) Confirmation of S-metolachlor resistance in Palmer amaranth (*Amaranthus palmeri*). Weed Technol 33:720–726
- Burgos NI, Kuk YI, Talbert RE (2001) *Amaranthus palmeri* resistance and differential tolerance of *A. palmeri* and *A. hybridus* to ALS-inhibitor herbicides. Pest Manag Sci 57:449–457
- Burke IC, Schroeder M, Thomas WE, Wilcut JW (2007) Palmer amaranth interference and seed production in peanut. Weed Technol 21:367–371
- Busi R, Gaines TA, Vila-Aiub MM, Powles SB (2014) Inheritance of evolved resistance to a novel herbicide (pyroxasulfone). Plant Sci 217:127–134
- Busi R, Porri A, Gaines TA, Powles SB (2018) Pyroxasulfone resistance in *Lolium rigidum* is metabolism-based. Pestic Biochem Physiol 148:74–80
- Busi R, Powles SB, Beckie SJ, Renton M (2020) Rotations and mixtures of soil-applied herbicides delay resistance. Pest Manag Sci 76:487–496
- Cobb AH, Reade JPH (2010) Herbicides and Plant Physiology. 2nd ed. London: Wiley-Blackwell. 286 p
- Comont D, Lowe C, Hull R, Crook L, Hicks HL, Onkokesung N, Beffa R, Childs DZ, Edwards R, Freckleton RP, Neve P (2020) Evolution of generalist resistance to herbicide mixtures reveals a trade-off in resistance management. Nat Commun 11:3086
- CropLife South Africa (2019) Plan for Eradication of the Palmer Amaranth (*Amaranthus palmeri*) in the Republic of South Africa. ([https://croplife.co.za/wp-content/uploads/2019/03/Emergency\\_eradication\\_plan\\_for\\_Amaranthus\\_palmeri\\_March\\_2019\\_VERSION\\_1.pdf](https://croplife.co.za/wp-content/uploads/2019/03/Emergency_eradication_plan_for_Amaranthus_palmeri_March_2019_VERSION_1.pdf)). Accessed: September 10, 2021
- Culpepper A, Whitaker J, MacRae A, York A (2008) Distribution of glyphosate-resistant Palmer amaranth (*Amaranthus palmeri*) in Georgia and North Carolina during 2005 and 2006. J Cotton Sci 12:306–310
- Culpepper AS, Grey TL, Vencill WK, Kichler JM, Webster TM, Brown SM, York AC, Davis JW, Hanna WW (2006) Glyphosate-resistant Palmer amaranth (*Amaranthus palmeri*) confirmed in Georgia. Weed Sci 54:620–626
- DeRidder BP, Dixon DP, Beussman D J, Edwards R, Goldsbrough PB (2002) Induction of glutathione S-transferases in Arabidopsis by herbicide safeners. Plant Physiol 130:1497–1505
- Devine MD, Preston C (2000) The molecular basis of herbicide resistance. Pages 72–84 in Cobb AH, Kirkwood RC, eds. Herbicides and Their Mechanisms of Action. Boca Raton, FL: Sheffield Academic Press/CRC Press
- Devine MD, Shukla A (2000) Altered target sites as a mechanism of herbicide resistance. Crop Prot 19:881–889
- Diggle AJ, Neve PB, Smith FP (2003) Herbicides used in combination can reduce the probability of herbicide resistance in finite weed populations. Weed Res 43:371–382
- Dominguez-Valenzuela JA, Gherekhloo J, Fernández-Moreno PT, Cruz-Hipolito HE, Alcántara-de la Cruz R, Sánchez-González E, De Prado R (2017) First confirmation and characterization of target and non-target site resistance to glyphosate in Palmer amaranth (*Amaranthus palmeri*) from Mexico. Plant Physiol Biochem 115:212–218
- Dücker R, Zöllner P, Lümmlen P, Ries S, Collavo A, Beffa R (2019a) Glutathione transferase plays a major role in flufenacet resistance of ryegrass (*Lolium spp.*) field populations. Pest Manag Sci 75:3084–3092
- Dücker R, Zöllner P, Parcharidou E, Ries S, Lorentz L, Beffa R (2019b) Enhanced metabolism causes reduced flufenacet sensitivity in black-grass (*Alopecurus myosuroides* Huds.) field populations. Pest Manag Sci 75:2996–3004
- Duke SO, Powles SB (2008) Glyphosate: a once-in-a-century herbicide. Pest Manag Sci 64:319–325
- Evans DL, Joshi SV (2016) Elucidating modes of activation and herbicide resistance by sequence assembly and molecular modelling of the acetolactate complex in sugarcane. J Theor Biol 407:184–197
- Evans JA, Tranel PJ, Hager AG, Schutte B, Wu C, Chatham LA, Davis AS (2016) Managing the evolution of herbicide resistance. Pest Manag Sci 72:74–80
- Frans R, Talbert R, Marx D, Crowley H (1986) Experimental design and techniques for measuring and analyzing plant responses to weed control practices. Pages 29–46 in Camper ND, ed. Research Methods in Weed Science. Champaign, IL: Weed Science Society of America
- Gaines TA, Duke SO, Morran S, Rigon CAG, Tranel PJ, Küpper A, Dayan FE (2020) Mechanisms of evolved herbicide resistance. J Biol Chem 295:10307–10330.
- Gaines TA, Gancho Slavov G, Hughes D, Kuepper A, Sparks C, Oliva J, Vila-Aiub M, Garcia M, Merotto A Jr, Neve P (2021) Investigating the origins and evolution of a glyphosate-resistant weed invasion in South America. Mol Ecol 30:5360–5372
- Gaines TA, Ward SM, Bekun B, Preston C, Leach JE, Westra P (2012) Interspecific hybridization transfers a previously unknown glyphosate resistance mechanism in *Amaranthus* species. Evol Appl 5:29–38
- Gaines TA, Zhang W, Wang D, Bukun B, Chisholm ST, Shaner DL (2010) Gene amplification confers glyphosate resistance in *Amaranthus palmeri*. Proc Natl Acad Sci USA 107:1029–1034
- Giacomini DA, Umphres AM, Nie H, Mueller TC, Steckel LE, Young BG, Scott RC, Tranel PJ (2017) Two new PPX2 mutations associated with resistance to PPO-inhibiting herbicides in *Amaranthus palmeri*. Pest Manag Sci 73:1559–1563
- González-Torralva F, Norsworthy JK (2021) Understanding resistance mechanisms to trifluralin in an Arkansas Palmer amaranth population. Genes 12:1225
- Gossett BJ, Murdock EC, Toler JE (1992) Resistance of Palmer amaranth (*Amaranthus palmeri*) to the dinitroaniline herbicides. Weed Technol 6:587–591
- Gouse M (2014) Assessing the Value of Glyphosate in the South African Agricultural Sector. Pretoria, Republic of South Africa: Department of Agricultural Economics, Extension and Rural Development, University of Pretoria. 46 p
- Gray JA, Stoltenberg DE, Balke NE (1996) Increased glutathione conjugation of atrazine confers resistance in a Wisconsin velvetleaf (*Abutilon theophrasti*) biotype. Pestic Biochem Physiol 55:157–171
- Haynes C, Kirkwood RC (1992) Studies on the mode of action of diflufenican in selected crop and weed species: basis of selectivity of pre- and early post-emergence applications. Pestic Sci 35:161–165
- Heap I (2022) The International Herbicide-Resistant Weed Database. [www.weedscience.org](http://www.weedscience.org). Accessed: January 23, 2022
- [HRAC] Herbicide Resistance Action Committee (2021) Home page. [www.hracglobal.com](http://www.hracglobal.com). Accessed: August 20, 2021
- Hoffner AE, Jordan DL, Chandi A, York AC, Dunphy EJ, Everman WJ (2012) Management of Palmer amaranth (*Amaranthus palmeri*) in glufosinate-resistant soybean (*Glycine max*) with sequential applications of herbicides. Int Sch Res Notices 2012:131650
- Horak MJ, Loughin TM (2000) Growth analysis of four *Amaranthus* species. Weed Sci 48:347–355
- Jalaludin A, Yu Q, Zoellner P, Beffa R, Powles S (2017) Characterization of glufosinate resistance mechanisms in *Eleusine indica*. Pest Manag Sci 73:1091–1100
- Katagi T, Mikami N (2000) Primary metabolism of agrochemicals in plants. Pages 43–106 in Roberts TR, ed. Metabolism of Agrochemicals in Plants. Chichester, UK: Wiley
- Kaundun SS, Hutchings S-J, Dale RP, Howell A, Morris JA, Kramer VC, Shivrain VK, McIndoe E (2017) Mechanism of resistance to mesotrione in an *Amaranthus tuberculatus* population from Nebraska, USA. PLoS ONE 12(6):e0180095
- Kaundun SS, Jackson LV, Hutchings S-J, Galloway J, Marchegiani E, Howell A, Carlin R, McIndoe E, Tiesca D, Moreno R (2019) Evolution of target-site resistance to glyphosate in *Amaranthus palmeri* population from Argentina and its expression at different plant growth temperatures. Plants 8:512

- Keeley PE, Carter CH, Thullen RJ (1987) Influence of planting date on growth of Palmer amaranth (*Amaranthus palmeri*). *Weed Sci* 35:199–204
- Knezevic SZ, Streibig JC, Ritz C (2007) Utilizing R software package for dose-response studies: the concept and data analysis. *Weed Technol* 21:840–848
- Kohrt JR, Sprague CL (2017) Response of a multiple-resistant Palmer amaranth (*Amaranthus palmeri*) population to four HPPD-inhibiting herbicides applied alone and with atrazine. *Weed Sci* 65: 534–545
- Koo DH, Jugulam M, Putta K, Cuvaca IB, Peterson DE, Currie RS, Friebe B, Gill BS (2018a) Gene duplication and aneuploidy trigger rapid evolution of herbicide resistance in common waterhemp. *Plant Physiol* 176:1932–1938
- Koo DH, Molin WT, Sasaki CA, Jiang J, Putta K, Jugulam M, Friebe B, Gill BS (2018b) Extrachromosomal circular DNA-based amplification and transmission of herbicide resistance in crop weed *Amaranthus palmeri*. *Proc Natl Acad Sci USA* 115:3332–3337
- Kudsk P, Mathiassen S (2020) Pesticide regulation in the European Union and the glyphosate controversy. *Weed Sci* 68:214–222
- Kumar V, Liu R, Boyer G, Stahlman PW (2019). Confirmation of 2,4-D resistance and identification of multiple resistance in a Kansas Palmer amaranth (*Amaranthus palmeri*) population. *Pest Manag Sci* 75:2925–2933
- Küpper A, Borgato EA, Patterson EL, Netto AG, Nicolai M, de Carvalho SJ, Christoffoleti PJ (2017) Multiple resistance to glyphosate and acetolactate synthase inhibitors in Palmer amaranth (*Amaranthus palmeri*) identified in Brazil. *Weed Sci* 65:317–326
- Küpper A, Manmathan HK, Giacomini D, Patterson EL, McCloskey WB, Gaines TA (2018a) Population genetic structure in glyphosate-resistant and -susceptible Palmer amaranth (*Amaranthus palmeri*) populations using genotyping-by-sequencing (GBS). *Front Plant Sci* 9, 10.3389/fpls.2018.00029
- Küpper A, Peter F, Zöllner P, Lorentz L, Tranel PJ, Beffa R, Gaines TA (2018b) Tembotrione detoxification in 4-hydroxyphenylpyruvate dioxygenase (HPPD) inhibitor-resistant Palmer amaranth (*Amaranthus palmeri* S. Wats.). *Pest Manag Sci* 74:2325–2334
- LeClere S, Wu C, Westra P, Sammons RD (2018) Cross-resistance to dicamba, 2,4-D, and fluroxypyr in *Kochia scoparia* is endowed by a mutation in an *AUX/IAA* gene. *Proc Natl Acad Sci USA* 115:E2911–E2920
- Li D, Gao Q, Xu L, Pang S, Liu Z, Wang C, Tan W (2017) Characterization of glutathione S-transferases in the detoxification of metolachlor in two maize cultivars of differing herbicide tolerance. *Pestic Biochem Physiol* 143:265–271
- Li J, Peng Q, Han H, Nyporko A, Kulynych T, Yu Q, Powles SB (2018) A novel EPSPS Thr-102-Ser substitution endows glyphosate resistance in *Tridax procumbens*. *J Agric Food Chem* 66:7880–7888
- Liphadzi KB, Dille JA (2006) Annual weed competitiveness as affected by pre-emergence herbicide in corn. *Weed Sci* 54:156–165
- Liu C, Neve P, Glasgow L, Wuerffel RJ, Owen MDK, Kaundun SS (2020) Modeling the sustainability and economics of stacked herbicide-tolerant traits and early weed management strategy for waterhemp (*Amaranthus tuberculatus*) control. *Weed Sci* 68:179–185
- Lu H, Yu Q, Han H, Owen MJ, Powles SB (2020a) Evolution of resistance to HPPD-inhibiting herbicides in a wild radish population via enhanced herbicide metabolism. *Pest Manag Sci* 76:1929–1937
- Lu H, Yu Q, Han H, Owen MJ, Powles SB (2020b) Non-target-site resistance to PDS-inhibiting herbicides in a wild radish (*Raphanus raphanistrum*) population. *Pest Manag Sci* 76:2015–2020
- Ma R, Kaundun SS, Tranel PJ, Riggins CW, McGinness DL, Hager AG, Hawkes T, McIndoe E, Riechers DE (2013) Distinct detoxification mechanisms confer resistance to mesotrione and atrazine in a population of waterhemp. *Plant Physiol* 163:363–377
- Morichetti S, Cantero JJ, Núñez C, Barboza GE, Amuchastegui A, Ferrell J (2013) On the presence of *Amaranthus palmeri* (*Amaranthaceae*) in Argentina. *Boletín de la Sociedad Argentina de Botánica* 48:347–353
- Nakka S, Godar AS, Thompson CR, Peterson DE, Jugulam M (2017a) Rapid detoxification via glutathione S-transferase (GST) conjugation confers a high level of atrazine resistance in Palmer amaranth (*Amaranthus palmeri*). *Pest Manag Sci* 73:2236–2243
- Nakka S, Godar AS, Wani PS, Thompson CR, Peterson DE, Roelofs J, Jugulam M (2017b) Physiological and molecular characterization of HPPD-inhibitor resistance in Palmer amaranth (*Amaranthus palmeri* S. Wats). *Front Plant Sci* 8:555
- Norsworthy JK, Griffith GM, Scott RC, Smith KL, Oliver LR (2008) Confirmation and control of glyphosate-resistant Palmer amaranth (*Amaranthus palmeri*) in Arkansas. *Weed Technol* 22:108–113
- Nunes AL, Vidal RA, Trezzi MM, Kalsing A, Goulart ICGR (2007) Herbicides to control *Chloris distichophylla* (false-star-grass). *Rev Bras Herbic* 6:13–21
- O'Brien SR, Davis AS, Riechers DE (2018) Quantifying resistance to isoxaflutole and mesotrione and investigating their interactions with metribuzin POST in waterhemp (*Amaranthus tuberculatus*). *Weed Sci* 66:586–594
- Patterson EL, Pattinga DJ, Ravet K, Neve P, Gaines TA (2018) Glyphosate resistance and EPSPS gene duplication: convergent evolution in multiple plant species. *J Hered* 109:117–125
- Patzoldt WL, Tranel PJ (2007) Multiple ALS mutations confer herbicide resistance in waterhemp (*Amaranthus tuberculatus*). *Weed Sci* 55:421–428
- Perotti VE, Larran AS, Palmieri VE, Martinatto AK, Alvarez CE, Tiesca D, Permingeat HR (2019) A novel triple amino acid substitution in the EPSPS found in a high-level glyphosate-resistant *Amaranthus hybridus* population from Argentina. *Pest Manag Sci* 75:1242–1251
- Powles SB (2010) Gene amplification delivers glyphosate-resistant weed evolution. *Proc Natl Acad Sci USA* 107:955–956
- Rangani G, Noguera M, Salas-Perez R, Benedetti L, Roma-Burgos N (2021) Mechanism of resistance to S-metolachlor in Palmer amaranth. *Front Plant Sci* 12:652581
- Rangani G, Salas-Perez R, Aponte RA, Knapp M, Craig IR, Meitzner T, Langaro AC, Noguera MM, Porri A, Roma-Burgos N (2019) A novel single-site mutation in the catalytic domain of protoporphyrinogen oxidase IX (PPO) confers resistance to PPO-inhibiting herbicides. *Front Plant Sci* 15:568
- Rayburn AL, McCloskey R, Tatum TC, Bollero GA, Jeschke MR, Tranel PJ (2005) Genome size analysis of weedy *Amaranthus* species. *Crop Sci* 45:2557–2562
- R Core Team (2015) R: A Language and Environment for Statistical Computing. Vienna, Austria: R Foundation for Statistical Computing
- Rigon CAG, Gaines TA, Küpper A, Dayan FE (2020) Metabolism-based herbicide resistance, the major threat among the non-target site resistance mechanisms. *Outlooks Pest Manag* 31:162–167
- Saari LL, Cotterman JC, Thill DC (1994) Resistance to acetolactate synthase inhibiting herbicides. Pages 83–139 in Powles SB, Holtum JAM, eds. *Herbicide Resistance in Plants: Biology and Biochemistry*. Boca Raton, FL: Lewis Publishers
- Salas RA, Burgos NR, Tranel PJ, Singh S, Glasgow L, Scott RC, Nichols RL (2016) Resistance to PPO-inhibiting herbicide in Palmer amaranth from Arkansas. *Pest Manag Sci* 72:864–869
- Sammons RD, Gaines TA (2014) Glyphosate resistance: state of knowledge. *Pest Manag Sci* 70:1367–1377
- Sammons RD, Heering DC, DiNicola N, Glick H, Elmore GA (2007) Sustainability and stewardship of glyphosate and glyphosate-resistant crops. *Weed Technol* 21:347–354
- Sauer J (1957) Recent migration of the dioecious amaranths. *Evolution* 11: 11–31
- Seefeldt SS, Jensen JE, Fuerst PE (1995) Log-logistic analysis of herbicide dose-response relationships. *Weed Technol* 9:218–227
- Sellers BA, Smeda RJ, Johnson WG, Kendig JA, Ellersieck MR (2003) Comparative growth of six *Amaranthus* species in Missouri. *Weed Sci* 51:329–333
- Shaner DL (1991) Mechanisms of resistance to acetolactate synthase/acetohydroxyacid synthase inhibitors. Pages 187–198 in *Proceedings of the Herbicide Resistance in Weeds and Crops*. Amsterdam: Elsevier
- Shyam C, Borgato EA, Peterson DE, Dille JA, Jugulam M (2021) Predominance of metabolic resistance in a six-way-resistant Palmer amaranth (*Amaranthus palmeri*) population. *Front Plant Sci* 11:614618
- Singh S, Singh V, Salas-Perez RA, Bagavathiannan MV, Lawton-Rauh A, Roma-Burgos N (2019). Target-site resistance accumulation among ALS inhibitor-resistant Palmer amaranth. *Pest Manag Sci* 75:1131–1139
- Socorro RJM (2011) Resistencia de *Sinapis alba* a Herbicidas Inhibidores de la ALS: Bases Agronómicas Bioquímicas y Moleculares. Ph.D thesis. Cordoba, Spain: University of Cordoba. 172 p

- Sosnoskie LM, Kichler JM, Wallace RD, Culpepper AS (2011) Multiple resistance in Palmer amaranth to glyphosate and pyriithiobac confirmed in Georgia. *Weed Sci* 59:321–325
- Spaunhorst DJ, Johnson WG (2017) Variable tolerance among Palmer amaranth (*Amaranthus palmeri*) biotypes to glyphosate, 2,4-D amine, and pre-mix formulation of glyphosate plus 2,4-D choline (Enlist Duo<sup>®</sup>) herbicide. *Weed Sci* 65:787–797
- Steckel LE, Main CL, Ellis AT (2008) Palmer amaranth (*Amaranthus palmeri*) in Tennessee has low level glyphosate resistance. *Weed Technol* 22:119–123
- Strom SA, Hager AG, Concepcion JT, Seiter NJ, Davis AS, Morris JA, Kaundun SS, Riechers DE (2021) Metabolic pathways for S-metolachlor detoxification differ between tolerant corn and multiple-resistant waterhemp. *Plant Cell Physiol* 62:1770–1785
- Strom SA, Hager AG, Seiter NJ, Davis AS, Riechers DE (2020) Metabolic resistance to S-metolachlor in two waterhemp (*Amaranthus tuberculatus*) populations from Illinois, USA. *Pest Manag Sci* 76:3139–3148
- Sukhorukov AP, Kushumina M, Reinhardt CF, Bezuidenhout H, Vorster BJ (2021) First records of *Amaranthus palmeri*, a new emerging weed in southern Africa, with further notes on other poorly known alien amaranths in the continent. *BioInvasions Rec* 10:1–9
- Thompson CR, Peterson D, Lally NG (2012) Characterization of HPPD-resistant Palmer amaranth. Proceedings of the Weed Science Society of America Annual Meeting. Waikoloa, Hawaii, February 6–9, 2012
- Tranel PJ, Wright TR (2002) Resistance of weeds to ALS-inhibiting herbicides: What have we learned? *Weed Sci* 50:700–712
- [USDA-APHIS] U.S. Department of Agriculture, Animal and Plant Health Inspection Service (2020) Weed Risk Assessment for *Amaranthus palmeri* (Amaranthaceae)—Palmer's Amaranth. Washington, DC: U.S. Department of Agriculture, Animal and Plant Health Inspection Service. 28 p. [https://www.aphis.usda.gov/plant\\_health/plant\\_pest\\_info/weeds/downloads/wra/amaranthus-palmeri.pdf](https://www.aphis.usda.gov/plant_health/plant_pest_info/weeds/downloads/wra/amaranthus-palmeri.pdf). Accessed: August 20, 2021
- Van De Stroet B (2018) Palmer Amaranth in South Dakota: Growth, Herbicidal Control, and Soybean Yield Loss. MS thesis. Brookings: South Dakota State University. 104 p
- Ward SM, Webster TM, Steckel LE (2013) Palmer amaranth (*Amaranthus palmeri*): a review. *Weed Technol* 27:12–27
- Webb SR, Hall JC (1995) Auxinic herbicide-resistant and herbicide-susceptible wild mustard (*Sinapis arvensis* L.) biotypes: effect of auxinic herbicides on seedling growth and auxin-binding activity. *Pestic Biochem Physiol* 52:137–148
- Wise AM, Grey TL, Prostko EP, Vencill WK, Webster TM (2009) Establishing the geographical distribution and level of ALS-resistance of Palmer amaranth (*Amaranthus palmeri*) accessions in Georgia. *Weed Technol* 23:214–220
- Wu C, Goldsmith M-R, Pawlak J, Feng P, Smith S, Navarro S, Perez-Jones A (2020) Differences in efficacy, resistance mechanism and target protein interaction between two PPO inhibitors in Palmer amaranth (*Amaranthus palmeri*). *Weed Sci* 68:105–115
- Yu Q, Jalaludin A, Han H, Chen M, Sammons RD, Powles SB (2015) Evolution of a double amino acid substitution in the 5-enolperuvyl-shikimate-3-phosphate synthase in *Eleusine indica* conferring high-level glyphosate resistance. *Plant Physiol* 167:1440–1447
- Yu Q, Powles S (2014) Metabolism-based herbicide resistance and cross-resistance in crop weeds: a threat to herbicide sustainability and global crop production. *Plant Physiol* 166:1106–1118