

## **Genetic structure and biogeographic history of the Bicknell's Thrush/Gray-cheeked Thrush species complex**

Authors: FitzGerald, Alyssa M., Weir, Jason, Ralston, Joel, Warkentin, Ian G., Whitaker, Darroch M., et al.

Source: The Auk, 137(1) : 1-20

Published By: American Ornithological Society

URL: <https://doi.org/10.1093/auk/ukz066>

---

BioOne Complete ([complete.BioOne.org](https://complete.BioOne.org)) is a full-text database of 200 subscribed and open-access titles in the biological, ecological, and environmental sciences published by nonprofit societies, associations, museums, institutions, and presses.

Your use of this PDF, the BioOne Complete website, and all posted and associated content indicates your acceptance of BioOne's Terms of Use, available at [www.bioone.org/terms-of-use](https://www.bioone.org/terms-of-use).

Usage of BioOne Complete content is strictly limited to personal, educational, and non - commercial use. Commercial inquiries or rights and permissions requests should be directed to the individual publisher as copyright holder.

---

BioOne sees sustainable scholarly publishing as an inherently collaborative enterprise connecting authors, nonprofit publishers, academic institutions, research libraries, and research funders in the common goal of maximizing access to critical research.



RESEARCH ARTICLE

## Genetic structure and biogeographic history of the Bicknell's Thrush/Gray-cheeked Thrush species complex

Alyssa M. FitzGerald,<sup>1,2,a,\*</sup> Jason Weir,<sup>3</sup> Joel Ralston,<sup>4</sup> Ian G. Warkentin,<sup>5</sup> Darroch M. Whitaker,<sup>6</sup> and Jeremy J. Kirchman<sup>2</sup>

<sup>1</sup> Ecology and Evolutionary Biology, State University of New York, Albany, New York, USA

<sup>2</sup> New York State Museum, Albany, New York, USA

<sup>3</sup> Department of Ecology and Evolution and Department of Biological Sciences, University of Toronto Scarborough, Toronto, Ontario, Canada

<sup>4</sup> Department of Biology, Saint Mary's College, Notre Dame, Indiana, USA

<sup>5</sup> Environmental Science, Memorial University of Newfoundland, Corner Brook, Newfoundland and Labrador, Canada

<sup>6</sup> Parks Canada, Rocky Harbour, Newfoundland and Labrador, Canada

<sup>a</sup> Current address: Institute of Marine Sciences, University of California, Santa Cruz, California, USA

\*Corresponding author: [alyssa.fitzgerald@noaa.gov](mailto:alyssa.fitzgerald@noaa.gov)

Submission Date: March 4, 2019; Editorial Acceptance Date: October 7, 2019; Published November 30, 2019

### ABSTRACT

We examined species limits, admixture, and genetic structure among populations in the Bicknell's Thrush (*Catharus bicknelli*)–Gray-cheeked Thrush (*C. minimus*) species complex to establish the geographic and temporal context of speciation in this group, which is a model system in ecology and a high conservation priority. We obtained mitochondrial ND2 sequences from 186 Bicknell's Thrushes, 77 Gray-cheeked Thrushes, and 55 individuals of their closest relative, the Veery (*C. fuscescens*), and genotyped a subset of individuals ( $n = 72$ ) at 5,633 anonymous single nucleotide polymorphic (SNP) loci. Between-species sequence divergence was an order of magnitude greater than divergence within each species, divergence was dated to the late Pleistocene (420 kbp) based on Bayesian coalescence estimation, and a coalescent model (IMa) revealed almost no gene flow between species based on ND2. SNP data were consistent with mitochondrial results and revealed low levels of admixture among species (3 of 37 Bicknell's Thrushes, no Gray-cheeked Thrushes, and no Veeries were  $>2\%$  admixed). Species distribution models projected to the Last Glacial Maximum suggest that Bicknell's Thrush and Gray-cheeked Thrush resided in primarily allopatric refugia in the late Pleistocene, consistent with the genetic data that support reproductive isolation over an extended period of time. Our genetic data suggest that both species underwent demographic expansions, possibly as they expanded out of Pleistocene refugia into their current ranges. We conclude that Bicknell's Thrush and Gray-cheeked Thrush are 2 distinct species-level lineages despite low levels of Gray-cheeked Thrush introgression in Bicknell's Thrushes, and divergence has been maintained by a long history of allopatry in subtly different habitats. Their unique phylogeography among boreal forest birds indicates that either cryptic species breaks in eastern North America are still undiscovered, or another factor, such as divergent natural selection, high migratory connectivity, or interspecific competition, played a role in their divergence.

**Keywords:** Bicknell's Thrush, biogeography, boreal forest, *Catharus*, genetic structure, Gray-cheeked Thrush, phylogeography, Pleistocene, speciation, species limits

### Structure génétique et histoire biogéographique du complexe d'espèces *Catharus bicknelli* – *C. minimus*

#### RÉSUMÉ

Nous avons examiné les limites, le mélange et la structure génétique des espèces parmi des populations du complexe d'espèces *Catharus bicknelli* – *C. minimus* afin d'établir le contexte géographique et temporel de spéciation dans ce groupe, qui est un système modèle en écologie et une priorité de conservation élevée. Nous avons obtenu les séquences mitochondriales ND2 chez 186 individus de *C. bicknelli*, 77 individus de *C. minimus* et 55 individus de leur plus proche parent, *C. fuscescens*, et nous avons génotypé un sous-ensemble d'individus ( $n = 72$ ) à 5 633 locus à polymorphisme mononucléotidique (SNP) anonymes. La divergence de séquence entre les espèces était d'un ordre de grandeur supérieur à la divergence au sein de chaque espèce, la divergence datait de la fin du Pléistocène (420 kpb) selon une estimation de la coalescence bayésienne, et un modèle coalescent (IMa) a révélé une quasi absence de flux génétique entre les espèces selon le ND2. Les données SNP concordaient avec les résultats mitochondriaux et ont révélé des niveaux faibles de mélange entre les espèces (3 individus sur 37 de *C. bicknelli*, aucun individu de *C. minimus* et de *C. fuscescens* n'était mélangé à  $>2\%$ ). Les modèles de distribution des espèces projetés jusqu'au dernier maximum glaciaire suggèrent que *C. bicknelli* et *C. minimus* résidaient principalement dans des refuges allopatriques à la fin du Pléistocène, ce qui est cohérent avec les données génétiques qui appuient l'idée d'isolement reproductif sur une

longue période. Nos données génétiques suggèrent que les deux espèces ont connu des expansions démographiques récentes, possiblement lorsqu'elles ont étendu leur répartition hors de ces refuges jusqu'à leur répartition actuelle. Nous concluons que *C. bicknelli* et *C. minimus* sont deux lignées d'espèces distinctes malgré de faibles niveaux d'introgression de *C. minimus* dans *C. bicknelli*, et la divergence a été maintenue par un long historique d'allopatrie dans des habitats subtilement différents. Leur phylogéographie unique parmi les oiseaux de la forêt boréale indique que les percées des espèces cryptiques dans l'est de l'Amérique du Nord n'ont toujours pas été découvertes, ou encore qu'un autre facteur, tel une sélection naturelle divergente, une connectivité migratoire élevée ou la compétition interspécifique, a joué un rôle dans leur divergence.

**Mots-clés:** biogéographie, *Catharus*, *Catharus bicknelli*, *Catharus minimus*, forêt boréale, limites des espèces, phylogéographie, Pléistocène, spéciation, structure génétique

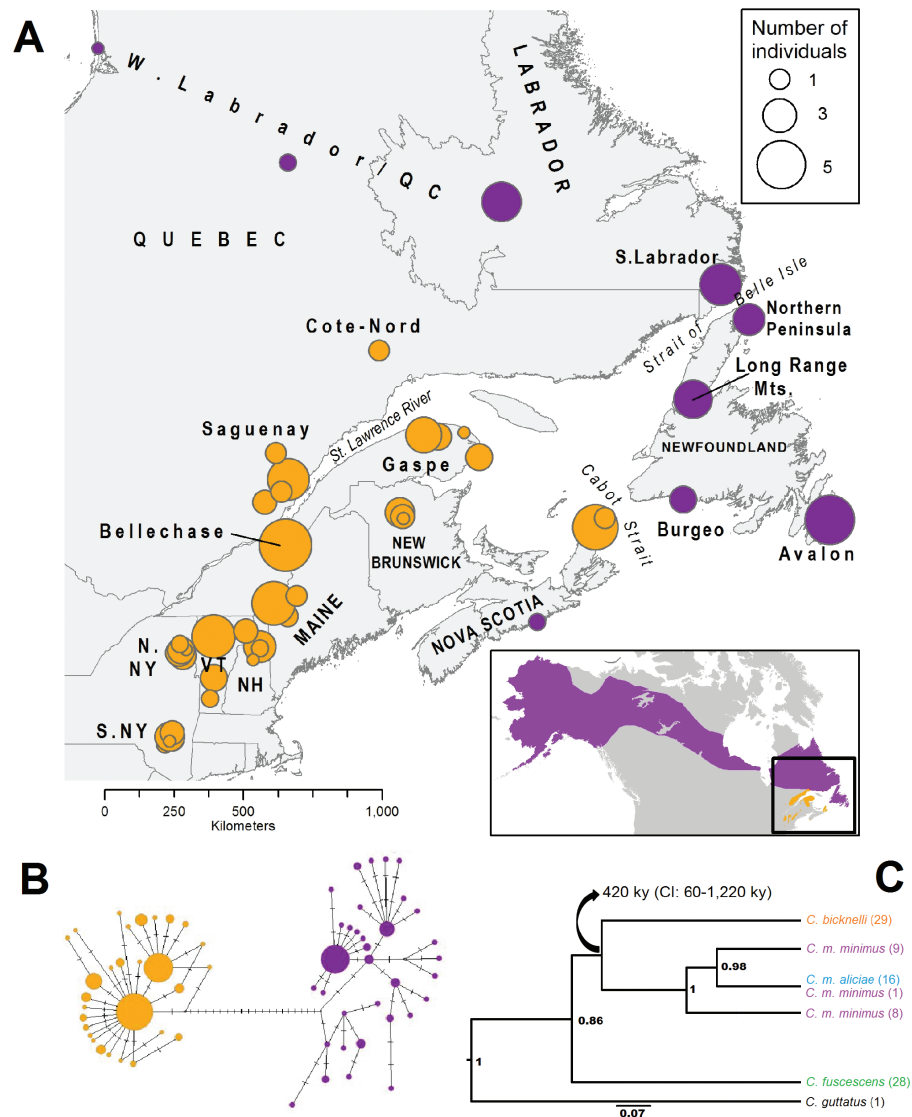
## INTRODUCTION

Most speciation events are suspected to occur in allopatry. Reproductive isolation can arise when single mechanisms of divergence, such as natural selection to distinct ecological conditions, sexual selection, or genetic drift, act in conjunction with geographic isolation (Coyne and Orr 2004, Price 2008). Even for populations occupying large contiguous landmasses, allopatric speciation is predominant, as supported by evidence of niche conservatism between sister species (Peterson 2011). Similarly, congruent biogeographic breaks in co-distributed species and species complexes imply that multiple lineages were split due to a single event or barrier, although that barrier may no longer be present (Arbogast and Kenagy 2001, Coyne and Orr 2004). For example, during the Pleistocene, glacial ice sheets expanded southward and inundated northern habitats above ~42°N during cool periods and retreated northward when temperatures warmed (Hewitt 2004). Although divergence in ice-free allopatric refugia has been questioned on the basis of incongruent timing (Klicka and Zink 1997, Arbogast and Slowinski 1998), many studies have found a detectable genetic signature of isolated evolution among populations that were sundered by Pleistocene ice sheets (e.g., Hewitt 2004, Weir and Schluter 2004, Lait and Burg 2013, Dohms et al. 2017).

The modern-day boreal forest biome of North America was entirely ice-covered during the Last Glacial Maximum (LGM). Species and species complexes that breed today in the boreal forest were pushed out of the area into smaller, disjunct refugia separated by uninhabitable regions during the LGM, and therefore show stronger signatures of isolation in glacial refugia compared to temperate and tropical species (Weir and Schluter 2004). Surveys of genetic population structure in boreal forest groups have found broadly congruent patterns of divergence between a single “boreal” clade in northern and eastern North America and one or more clades west of the Rocky Mountains, with most of the genetic structure (and morphological differences, if present) found in the western portions of species' ranges (Zink 1994, Weir and Schluter 2004, van Els et al. 2012, Dohms et al. 2017). This pattern is exemplified by the Canada Jay (*Perisoreus canadensis*) species complex, which comprises

a genetically diverse “boreal” clade stretching from eastern North America to Alaska, and multiple, lower-latitude western clades; these clades may represent separate species based on genetic distances, although they are not currently recognized as such taxonomically. Species distribution models (SDMs) of Canada Jays at the LGM identify 4+ western refugia and 1–3 eastern refugia (van Els et al. 2012, Dohms et al. 2017). Boreal species like Blackpoll Warbler (*Setophaga striata*) and Boreal Chickadee (*Poecile hudsonicus*) are not found southwest of the Rockies and do not have deep biogeographic breaks across their range. These species have similar geographic structures, with imperfect clustering of western, eastern, and Newfoundland birds and high levels of gene flow between clusters (Ralston and Kirchman 2012, Lait and Burg 2013), and their LGM-projected SDMs indicate possible refugia in Beringia, the southeastern United States, and Newfoundland. Pollen and fossil records of boreal tree species suggest that a large, relatively contiguous boreal-type forest refugium existed in the southeastern United States, multiple, smaller refugia persisted in Beringia and western North America, and a small sub-boreal refugium could be found on the then exposed continental shelf off the coast of Newfoundland during the LGM (Davis 1983, Jackson et al. 1997, Jaramillo-Correa et al. 2004, Williams et al. 2004, Brubaker et al. 2005), largely corroborating the patterns found in birds. Together, these studies indicate that (1) boreal bird species and species complexes diversified during the Pleistocene; (2) interspecific-level breaks are found in western North America, whereas there is little geographic genetic structure across the broad swath of boreal forest in central and eastern North America excepting Newfoundland; and (3) SDMs projected to the LGM support within-species patterns of genetic structure, suggesting that modern genetic breaks are the result of geographic isolation during the Pleistocene.

Among North American boreal forest birds, only one species complex has a species-level break in eastern North America: the Bicknell's Thrush (*Catharus bicknelli* Ridgway) and Gray-cheeked Thrush (*C. minimus* Lafresnaye) (Figure 1A inset). From its earliest descriptions, the Bicknell's Thrush was considered a subspecies of Gray-cheeked Thrush (Ridgway 1881, Bicknell 1882,



**FIGURE 1.** Population localities, sample sizes, and corresponding haplotype network and gene genealogy of mitochondrial ND2 for Bicknell's Thrush and Gray-cheeked Thrush. **(A)** The circles in the map show sample sizes and haplotype groupings from each population (names shown) for Bicknell's Thrush ( $n = 186$ , orange) and Gray-cheeked Thrush ( $n = 77$ , purple). Samples from Alaska ( $n = 7$ ) and Siberia ( $n = 3$ ), Veeries, and Hermit Thrushes are not shown on the map. The locator map shows the breeding ranges of Bicknell's Thrush and Gray-cheeked Thrush. **(B)** Haplotypes represent individuals with identical genetic sequences. Hash marks indicate the number of mutational differences between haplotypes. The line separating the species is shown with a reduced distance (not to scale). **(C)** Simplified Bayesian gene genealogy for 92 thrush ND2 haplotypes. Bicknell's Thrush = orange,  $n = 29$ ; Gray-cheeked Thrush = purple,  $n = 34$ ; Veery = green,  $n = 28$ ; Hermit Thrush = black,  $n = 1$ . Posterior probabilities are shown at the nodes; monophyly was constrained at the BITH/GCTH node and so the posterior probability is not shown. The scale bar shows age coalescence in millions of years.

Brewster 1883, Wallace 1939), and was not recognized as a full species by taxonomic authorities (e.g., Monroe et al. 1995) until Ouellet (1993) showed that it is distinct from *C. minimus* in vocalizations, morphology, breeding habitat, and wintering range. However, Marshall (2001) argued that, because songs were very similar and body-size and plumage variation were clinal, the Newfoundland subspecies of Gray-cheeked Thrush (*C. m. minimus*) was a geographical and phenotypic intermediate between the

Bicknell's Thrush and Northern Gray-cheeked Thrush (*C. m. aliciae*) and that the Bicknell's Thrush should again be designated *C. m. bicknelli*. More recent analyses of climate and habitat have shown that the Bicknell's Thrush and Gray-cheeked Thrush occupy distinctive broad-scale niches (FitzGerald 2017) and local-scale habitats (Ralston et al. 2019); however, neither study examined the Gray-cheeked Thrush subspecies separately and therefore could not assess if the Newfoundland subspecies *C. m. minimus*



occupies climate or habitat intermediate between *C. m. aliciae* and *C. bicknelli*.

The genus *Catharus*, a model system for investigating interspecific competition and community ecology (Dilger 1956, Able and Noon 1976, Noon 1981) and modes of speciation (Winker 2010, FitzGerald 2017), has been the focus of several molecular phylogenetic studies aimed, in particular, at understanding the evolution of migration (Ruegg and Smith 2002, Outlaw et al. 2003, Winker and Pruett 2006, Voelker et al. 2013). Previous studies have shown that, together with the Veery (*C. fuscescens*), Gray-cheeked Thrush and Bicknell's Thrush comprise the most recently diverged lineage within the genus, but these studies have inferred different sister species relationships within this clade depending on the number and type of genetic loci (i.e. mitochondrial vs. autosomal) sequenced (see Ellison 2001, Outlaw et al. 2003, Klicka et al. 2005, Winker and Pruett 2006). The most recent and comprehensive phylogenetic analysis based on sequences of 6 autosomal, 2 Z-chromosomal, and 2 mitochondrial loci from one individual per species found high support for Gray-cheeked Thrush and Bicknell's Thrush as sister species with the Veery as sister to this clade, and estimated that this group split from its sister clade ~800,000 yr before present (ybp) (Voelker et al. 2013).

The only genetic studies to sample multiple individuals (i.e. more than 2) in the Bicknell's Thrush/Gray-cheeked Thrush species complex were Ellison (2001) and FitzGerald et al. (2017), the latter of which assessed the distinctiveness of Bicknell's Thrush and the 2 Gray-cheeked Thrush subspecies on the basis of mitochondrial and nuclear DNA sequences and morphology. FitzGerald et al. (2017) were unable to clearly resolve major genetic breaks from 2 nuclear loci but found that mitochondrial divergence between Gray-cheeked Thrush subspecies was an order of magnitude smaller than the divergence between Gray-cheeked and Bicknell's thrush, supporting a species-level break. However, they also reported the first putative hybrid between the Gray-cheeked Thrush and Bicknell's Thrush, evidence of occasional introgression. The morphological and genetic results supported designation of Gray-cheeked Thrushes from the Newfoundland archipelago and Harbour Island, Nova Scotia, as *C. m. minimus*, and birds from western Labrador and farther west as *C. m. aliciae*, with southern Labrador comprising a zone of mixing between the subspecies (FitzGerald et al. 2017).

Lack of concordance between mitochondrial and nuclear gene trees in the recently diverged Veery/Gray-cheeked/Bicknell's thrush lineage may stem from recent hybridization or incomplete lineage sorting. Examining many individuals per species at many loci sampled throughout the genome can provide stronger statistical power for resolving phylogenies and enable rigorous tests of genetic admixture in closely related species complexes (e.g., Harvey and

Brumfield 2015, Mason and Taylor 2015, Winger et al. 2015, Jeffries et al. 2016). Here we implement genotyping-by-sequencing, a restriction-site associated DNA sequencing method that results in thousands of polymorphic loci (Elshire et al. 2011), along with Sanger sequencing of mitochondrial DNA from the largest sample size of thrushes to date. We combine these genetic analyses with Pleistocene distribution models to investigate the biogeographic history of the Bicknell's/Gray-cheeked Thrush species complex.

Our analysis of genetic structure and biogeographic history provides a new basis for taxonomic treatment of the group, but also provides important evolutionary context to the ecological study of these threatened and declining taxa. Currently, the Bicknell's Thrush is considered the "Northeast's most vulnerable songbird" (Rimmer and McFarland 2013) because of its small and naturally fragmented breeding range, its small and vulnerable wintering range (Lambert et al. 2005, Rodenhouse et al. 2008, COSEWIC 2009, 2013; Matteson 2012, Environment Canada 2014), and documentation of significant declines in the last 2 decades (Ralston et al. 2015). Because of this conservation concern, Bicknell's Thrush is the primary focus of the Mountain Birdwatch citizen-science monitoring effort (vtecostudies.org; Rimmer and McFarland 2013), which has resulted in a precise estimate of its global population size of <120,000 birds (71,318 [95% CI: 56,080–89,748] in the United States and ~45,000 in Canada; Hill and Lloyd 2017). Breeding Bird Survey (BBS) data indicate that the Newfoundland Gray-cheeked Thrush (*C. m. minimus*) has undergone a ~95% decline over the past 30 yr (SSAC 2010, Whitaker et al. 2015, 2018; FitzGerald et al. 2017). As a result, this population has been listed as threatened under the Newfoundland and Labrador Endangered Species Act and is awaiting assessment for possible listing under Canada's federal Species at Risk Act (COSEWIC 2013). Further, demographic and BBS data indicate that Northern Gray-cheeked Thrushes (*C. m. aliciae*) in Alaska and possibly northwestern Canada are also declining, while monitoring data are virtually nonexistent for other portions of the species' range (DeSante et al. 2015, Sauer et al. 2017, Whitaker et al. 2018). Our goals were to (1) evaluate the reciprocal monophyly, levels of genetic admixture, and timing of divergence between the Gray-cheeked Thrush and Bicknell's Thrush; (2) examine patterns of population structure within each species; and (3) reveal the biogeographic context of within-species and among-species divergences at the LGM.

## METHODS

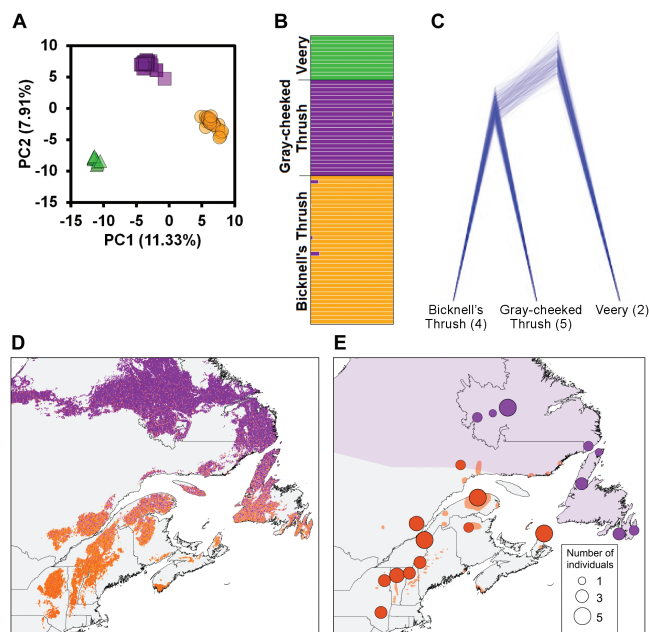
### Tissue Sampling and Mitochondrial DNA Sequencing

We captured thrushes on breeding territories using mist nets and prerecorded vocalizations in New York, Vermont, Maine, Nova Scotia, Newfoundland, and Labrador in June and July, 2009–2015. Birds were sampled for blood from the

brachial vein, banded, and released. Blood was preserved in the field in lysis buffer (0.1M Tris-HCl, 0.1M EDTA, 0.01M NaCl, 3% SDS) and subsequently frozen at the New York State Museum (NYSM). Additional blood samples, frozen tissues, and DNA extracts preserved on FTA Whatman cards were obtained from the American Museum of Natural History, Bird Studies Canada, the Canadian Wildlife Service, NYSM, University of Alaska Museum of the North, University of Washington Burke Museum, and the Vermont Center for Ecostudies; all additional samples were from breeding birds based on capture date. Genomic DNA was extracted using a DNeasy kit (QIAGEN, Valencia, California) following the manufacturer's protocol. Residual blood and tissue samples and DNA extracts are archived at  $-80^{\circ}\text{C}$  at the NYSM. We sequenced the entire mitochondrial NADH dehydrogenase subunit 2 gene (ND2, 1,041 base pairs [bp]) from our samples using primers and PCR protocols from FitzGerald et al. (2017) for a total of 186 Bicknell's Thrushes, 77 Gray-cheeked Thrushes, 55 Veeries, and 2 Hermit Thrushes (Figure 1A, Supplemental Material Table S1). Sequences from both strands were aligned, edited, and translated using SEQUENCHER 5.4.1 (Gene Codes Corporation, Ann Arbor, Michigan).

### Single Nucleotide Polymorphic Genotyping

To generate a multi-locus dataset of nuclear DNA polymorphisms, a subset of DNA extracts was sent to the Institute of Genomic Diversity at Cornell University for genotyping-by-sequencing (Elshire et al. 2011). High-quality DNA extracts ( $>20\text{ ng }\mu\text{L}^{-1}$ ) were digested with the restriction enzyme *Pst*I and a unique barcode/adaptor combination was ligated to each sample prior to pooling and amplification by PCR. Fragments were pooled with amplicons from other bird species to create 3 sequencing libraries, with 95 barcoded individuals per library, and sequenced on multiple lanes of a Hi-Seq 2000 Illumina sequencer (Illumina, San Diego, California). Each library resulted in  $\sim 200$  gigabase pair (Gbp) of raw data (Barrera-Guzmán et al. 2018). The 100 bp reads were filtered using the Universal Network Enabled Analysis Kit (UNEAK) pipeline (Lu et al. 2013) implemented in TASSEL 3.0 (Bradbury et al. 2007). Adapter dimers and sequences with an ambiguous base were removed and all reads were trimmed to 64 bp. Identical reads were merged into "tags" within each barcoded individual. Using a pairwise alignment, tags with 1 bp mismatch were retained as candidate single nucleotide polymorphic (SNPs). Candidate SNP loci that were present in fewer than 75% of individuals were removed, and then individuals possessing fewer than 50% of candidate SNPs were removed. To construct genotypes based on sequencing coverage, a maximum-likelihood method (Lynch 2009) with an updated version of the script from White et al. (2013) was implemented; this method retained SNPs with an AIC  $\geq 4$  units lower



**FIGURE 2.** Analyses of dataset with all (5,633) SNPs defined 3 lineages but revealed low levels of admixture. Bicknell's Thrush = BITH, orange,  $n = 33$ . Gray-cheeked Thrush = GCTH, purple,  $n = 23$ . Veery = VEER, green,  $n = 11$ . (A) Lineage assessment using a principal coordinates analysis. The percentage of variance explained by each axis is shown in parentheses. (B) Ancestry assignment in STRUCTURE for  $K = 3$ . Each line represents a single individual. (C) Bayesian lineage assessment in SNAPP from a subset of individuals (BITH  $n = 4$ , GCTH  $n = 5$ , VEER  $n = 2$ ). (D) Tess Ad-Mixer map showing the geographic locations where potential hybridization may occur for BITH and GCTH. (E) Sample localities and sizes for BITH and GCTH, and their respective breeding ranges. Samples from Alaska ( $n = 1$ ) and Siberia ( $n = 3$ ), the migrant from Bellechasse, Québec, and VEER are not shown.

than the next best reconstructed genotype. To remove paralogs (duplicated regions within the genome), SNPs with observed heterozygosities  $\geq 0.75$  were removed (Baldassarre et al. 2014, Weir et al. 2015). Finally, SNPs present in fewer than 25% of individuals and individuals with fewer than 70% of SNPs were excluded. Following filtering, we retained a dataset of 5,633 SNPs from 72 birds, including 37 Bicknell's Thrushes from locations spanning the species' entire breeding range, 23 Gray-cheeked Thrushes representing both subspecies and including individuals from Siberia, Alaska, and eastern Canada, a probable late-migrating Gray-cheeked Thrush, and a small sample of eastern and western Veeries ( $n = 11$ ) (Figure 2E, Supplemental Material Table S1).

### Species Limits, Divergence Times, and Admixture Analyses

Uncorrected pairwise nucleotide divergence for ND2 was calculated using DNASP 5.10 (Rozas et al. 2003). A hierarchical analysis of molecular variance (AMOVA) was

used to assess whether a significant proportion of genetic variation could be attributed to species divisions based on 20,000 randomizations of the ND2 data set. A median-joining haplotype network was constructed in the program NETWORK 4.612 (fluxus-engineering.com). Coalescent times of ND2 haplotypes were estimated for each species using BEAST 2.1.3 (Drummond et al. 2012, Drummond and Bouckaert 2015) based on the ND2 mutation rate of 0.0145 substitutions/site/million years calibrated by Lerner et al. (2011) and using a Hermit Thrush (*Catharus guttatus*) sequence as an outgroup. The HKY model was determined to be the best model of nucleotide substitution for each species using PartitionFinder 1.1.0 (Lanfear et al. 2012) based on Bayesian information criterion. Using the Yule speciation model and both a relaxed and strict lognormal clock, we estimated Bayesian maximum clade credibility trees from an alignment that included only one sequence from each haplotype obtained from our sample of Veeries, Bicknell's Thrushes, and Gray-cheeked Thrushes. For this analysis we constrained the monophyly of Bicknell's Thrush + Gray-cheeked Thrush following Voelker et al. (2013). An initial model was run for 10,000,000 generations using all default priors and sampling every 2,000 trees. The means for gamma and kappa parameters from the initial run were used in 3 subsequent runs of 50,000,000 generations each, sampling every 10,000 trees. All files were formatted using BEAUti 2 (Drummond et al. 2012). Convergence was assessed with Tracer 1.6.0 (Rambaut et al. 2014) and the maximum clade credibility tree was determined with TreeAnnotator 2.1.2 (<http://beast.bio.ed.ac.uk/treeannotator>) using a 25% burn-in. Node support and mean age estimates were tallied using FigTree 1.4.0 (<http://tree.bio.ed.ac.uk/software/figtree/>).

To examine the history and directionality of gene flow between Bicknell's Thrush and Gray-cheeked Thrush, and to estimate the size of their populations prior to and following their split we used the Isolation-with-Migration (IMa; Hey and Nielsen 2007) software to implement a coalescent model of their mitochondrial divergence using the same HKY substitution model and the ND2 mutation rate (converted to a per-locus rate by multiplying by the number of nucleotides, 1,041 bp) as in the BEAST analyses. We performed several runs of 1 million MCMC generations to refine parameter priors and then ran the program with a burn-in of 500,000 followed by 10 million generations. From the output estimates of the population mutation parameter  $\theta$  we calculated population sizes using the equation  $N_1 = \theta / 4\mu$ .

Genetic clusters based on the SNPs were examined with a standardized principal coordinates analysis (PCoA) of the covariance of the genetic distance matrix calculated in GenAlEx (Peakall and Smouse 2006). Because distance-based analyses in GenAlEx do not handle missing data well

(Peakall and Smouse 2006), we removed all singleton alleles (Linck and Battey 2019) and any individual with >40% missing SNP calls, resulting in a PCoA of 65 individuals and 5,604 SNPs. Genetic structure was examined using an admixture model and correlated allele frequencies with no prior information on species or populations groupings in STRUCTURE 2.3.4 (Pritchard et al. 2000, Falush et al. 2003); 1–6 populations were examined (3 replicates each) with 100,000 cycles after a burn-in of 10,000 cycles. Ninety-five percent confidence intervals were calculated, and results were analyzed following Evanno et al. (2005). TESS Ad-Mixer (Mitchell et al. 2013) was used to spatially visualize where admixture was most likely to occur by displaying spatial interpolations of ancestry (Q matrix outputs from STRUCTURE). A species tree was created with SNAPP (Bryant et al. 2012, Bouckaert et al. 2014); BEAUti 2 (Drummond et al. 2012) was used to format input files for SNAPP using all default priors. Because a species tree run with all individuals and all SNPs did not converge, a species tree was run with (1) a reduced dataset composed of 44 SNPs present in all 72 individuals and (2) a reduced dataset composed of all 5,633 SNPs and 11 individuals representing the geographic spread of each species. SNAPP was run for 100,000 generations, with trees sampled every 100 generations after a pre-burn-in of 10,000. Tracer 1.6.0 (Rambaut et al. 2014) was used to assess convergence. DensiTree (Bouckaert and Heled 2014) was used to export trees; the Bicknell's Thrush/Gray-cheeked Thrush split from the Veery was designated as the root.

### Within-Species Genetic Structure Analyses

Individuals were placed into regional groupings, hereafter referred to as "populations." A population was defined as at least 5 geographically proximate individuals separated from other such groups by natural biogeographic barriers, primarily large bodies of water or low-elevation areas of unsuitable habitat between mountain ranges. Geographical proximity was delimited as within 600 km because fewer than 10% of juvenile Bicknell's Thrushes disperse more than 600 km from their natal site (Studds et al. 2012). This scheme resulted in 10 geographic populations of Bicknell's Thrush and 7 of Gray-cheeked Thrush (Figure 1A, Supplemental Material Table S1). Bicknell's Thrush samples from Côte-Nord, Quebec ( $n = 3$ ), and Gray-cheeked Thrush samples from Harbour Island, Nova Scotia ( $n = 2$ ), and Siberia, Russia ( $n = 3$ ), were not included in population comparisons because of small sample size. Veery samples ( $n = 55$ ) were used to investigate species boundaries and estimate divergence times, but ND2 population structure was not examined for this species due to small and uneven sampling.

To detect any fine-scale population structure, we ran STRUCTURE for each species individually using the



same procedure as above with no prior information on population groupings for the 5,633 SNP dataset. We also examined population structure between population groupings for all species for the 5,633 SNP dataset using Hudson's pairwise fixation indices ( $F_{ST}$ ; Bhatia et al. 2013) with 1,000 replicates. For this analysis, we excluded Gray-cheeked Thrushes from Alaska due to small sample size, and grouped Bicknell's Thrushes from Nova Scotia and New Brunswick.

Measures of mitochondrial genetic diversity, including number of haplotypes ( $h$ ), haplotype diversity ( $H$ ), and nucleotide diversity ( $\pi$ ), were calculated using the programs DNASP 5.10 (Rozas et al. 2003) and ARLEQUIN 3.5 (Excoffier and Lischer 2010). AMOVAs were used to calculate how much ND2 genetic variation could be attributed to subspecies or population divisions, based on 20,000 randomizations of the dataset. Pairwise fixation indices ( $F_{ST}$ ) between geographic populations were calculated in ARLEQUIN with 100 permutations to assess significance. The relationship between geographic distance, measured using a nearest neighbor approach in ArcMap (ESRI), and genetic relatedness ( $F_{ST}$ ) of populations was tested using a Mantel test (1,000 permutations) in ARLEQUIN. Mismatch distributions with Harpending's raggedness index in ARLEQUIN (1,000 permutations) and DNASP tested for recent population expansions.

### Pleistocene Distribution Modeling and Overlap of Refugia

To examine the history of allopatry between Bicknell's and Gray-cheeked thrush we used the niche modeling program Maxent (Phillips et al. 2006) to create modern-day species distribution models (SDMs) for those thrush species, and then hindcast those SDMs to the LGM, ~21,000 ybp (Mix et al. 2001, Clark et al. 2009). Occurrences throughout the breeding range for each thrush species (Bicknell's Thrush:  $n = 274$ ; Gray-cheeked Thrush:  $n = 534$ ), modern-day geospatial layers (19 bioclimatic layers and 3 tree species, described below), and Maxent protocols are the same as in FitzGerald (2017).

Bioclimatic layers for the LGM were obtained through the WorldClim database (Hijmans et al. 2005; [www.worldclim.org](http://www.worldclim.org)) for modern-day and for 2 different Pleistocene climate scenarios: (1) NCAR-CCSM4 (National Center for Atmospheric Research-Community Climate System Model 4; Versteine et al. 2010) and (2) MIROC-ESM (Model for Interdisciplinary Research on Climate-Earth System Model; Watanabe et al. 2011). Both scenarios are based on coupling atmosphere, land, ocean, and ice simulations from the LGM, but the NCAR scenario is less complex and stringent compared to the MIROC scenario.

SDMs are often based solely on climatic factors, but tree species assemblages are also important, proximate drivers of bird species distributions (Lee and Rotenberry 2005,

Matthews et al. 2011). SDMs that also included layers describing the distribution of balsam fir (*Abies balsamea*), black spruce (*Picea mariana*), and paper birch (*Betula papyrifera*) had higher AUC values (area under the receiver operating curve) and more accurately matched breeding distributions of *Catharus* thrush species (FitzGerald 2017). Using the same occurrence dataset for these 3 tree species as in FitzGerald et al. (2017), we projected their distributions to the LGM and then included those LGM-projected habitat suitability layers in the thrush LGM-projected distributions.

The amount of Pleistocene-projected overlap between the species was calculated using Schoener's  $D$  in ENMTools 1.3; Schoener's  $D$  views the Maxent suitability output as proportional to species abundance (Warren et al. 2008, 2010) and is calculated by standardizing each species' suitability scores across the study region to a sum of 1, summing the absolute value of the differences between suitability scores for each bird species at each pixel, then subtracting half the sum difference from 1 (Warren 2010). A value of 0 indicates no overlap, and a value of 1 means complete overlap.

## RESULTS

### Species Limits and Admixture

One bird (NYSM zt-1480) captured at Bellechasse in southern Québec on May 31 that was originally identified as a Bicknell's Thrush but possessed a Gray-cheeked Thrush ND2 haplotype and SNP genotype was presumed to be a late migrant Gray-cheeked Thrush; we discuss this bird further below but we excluded it from our analyses. One individual in the FitzGerald et al. (2017) dataset, discussed in detail in that paper and in the Discussion below, was removed from all mitochondrial analyses because of its putative hybrid ancestry, and we were unable to genotype this individual using SNPs. To assess species limits, our final datasets included 186 Bicknell's Thrushes, 77 Gray-cheeked Thrushes, 55 Veery, and 2 Hermit Thrushes (Figure 1A, Supplemental Material Table S1) for mitochondrial analyses, and 37 Bicknell's Thrushes, 23 Gray-cheeked Thrushes, and 11 Veeries for SNP analyses (Figure 2E, Supplemental Material Table S1).

The average number of pairwise substitutions between Bicknell's Thrush and Gray-cheeked Thrush was 2.31% (range: 1.83–2.69%), similar to the averages between Veery and Bicknell's Thrush (1.82%, range: 1.54–2.31%) and between Veery and Gray-cheeked Thrush (average: 2.07%, range: 1.44–2.88%). The hierarchical AMOVA based on pairwise genetic distances between Gray-cheeked and Bicknell's thrush populations showed that 92% of the variance was explained by species designations, whereas only 6% of the variance was explained by within-population genetic differences ( $P < 0.0001$ ;  $df = 2$  and 17). The gene



genealogy for ND2 revealed 3 major lineages corresponding to Bicknell's Thrush, Gray-cheeked Thrush, and Veery (Figure 1C). Node support values and coalescence estimates were highly congruent among the 3 randomly seeded BEAST runs (Supplemental Material Table S2). The posterior probability values at the node splitting Veeries from the Bicknell's/Gray-cheeked Thrush clade ranged from 0.850 to 0.857. The median age of the coalescent node for 34 Gray-cheeked Thrush haplotypes was 242–243 thousand years (ky) (based on the 3 runs; 95% CI: 37–720 ky). The coalescent age of Bicknell's Thrush ( $n = 29$ ) was slightly younger, with a median age of 188–192 ky (95% CI: 23–571 ky), whereas Veeries ( $n = 28$ ) coalesced 243–249 ky (95% CI: 31–753 ky). The Bicknell's/Gray-cheeked Thrush clade coalesced 417–423 ky (95% CI: 59–1240 ky). Running the model with a strict lognormal clock reduced the ranges of all confidence intervals but did not substantially change the estimated mean divergence times. Estimates from IMA of gene flow between Bicknell's Thrush and Gray-cheeked Thrush following their split from a common ancestor were symmetrical and essentially 0 (high point  $m1 = 0.0003$ , 95% HPD = 0.0013–0.1482; high point  $m2 = 0.0003$ , 95% HPD = 0.0008–0.1093), translating to  $10^{-9}$  migrants per generation. Estimated values for the ancestral population mutation parameter  $q_a$  did not converge, but values of  $q_1$  and  $q_2$  produced estimated population size of 506,000 for Bicknell's Thrush and 957,000 for Gray-cheeked Thrush. We suspect the latter is an underestimate because we did not sample Gray-cheeked Thrush densely throughout its entire geographic range.

Multi-locus genotype analyses consistently revealed 3 genetic groupings. The PCoA segregated 3 groups (Figure 2A), with Veeries genetically distant from both Bicknell's Thrushes and Gray-cheeked Thrushes. STRUCTURE identified  $K = 3$  as the most likely number of distinctive groups (Figure 2B, Supplemental Material Figure S1), and the Bayesian SNAPP tree revealed 3 separate lineages, with Bicknell's Thrush and Gray-cheeked Thrush as sister taxa (Figure 2C). At  $K = 3$ , STRUCTURE revealed 3 Bicknell's Thrushes (from the populations of Bellechasse, Saguenay, and Nova Scotia) that had >2% (range: 2.8–11.0%) genetic admixture from Gray-cheeked Thrush; 2 of these had admixture 95% confidence intervals that did not overlap with 0 (Supplemental Material Table S3). No Gray-cheeked Thrush or Veery showed >2% mixed ancestry. TESS Ad-Mixer showed that admixture was most likely to occur near the species' range boundaries, in northern Nova Scotia, southwestern Newfoundland, and in southeastern Québec, (Figure 2D), although admixed individuals were only found in the Bicknell's Thrush range.

All between-species population comparisons using Hudson's  $F_{ST}$  showed high differentiation (min  $F_{ST} = 0.234$ ; Figure 3, Supplemental Material Table S4).  $F_{ST}$  pairwise comparisons were higher between Veery/Bicknell's Thrush

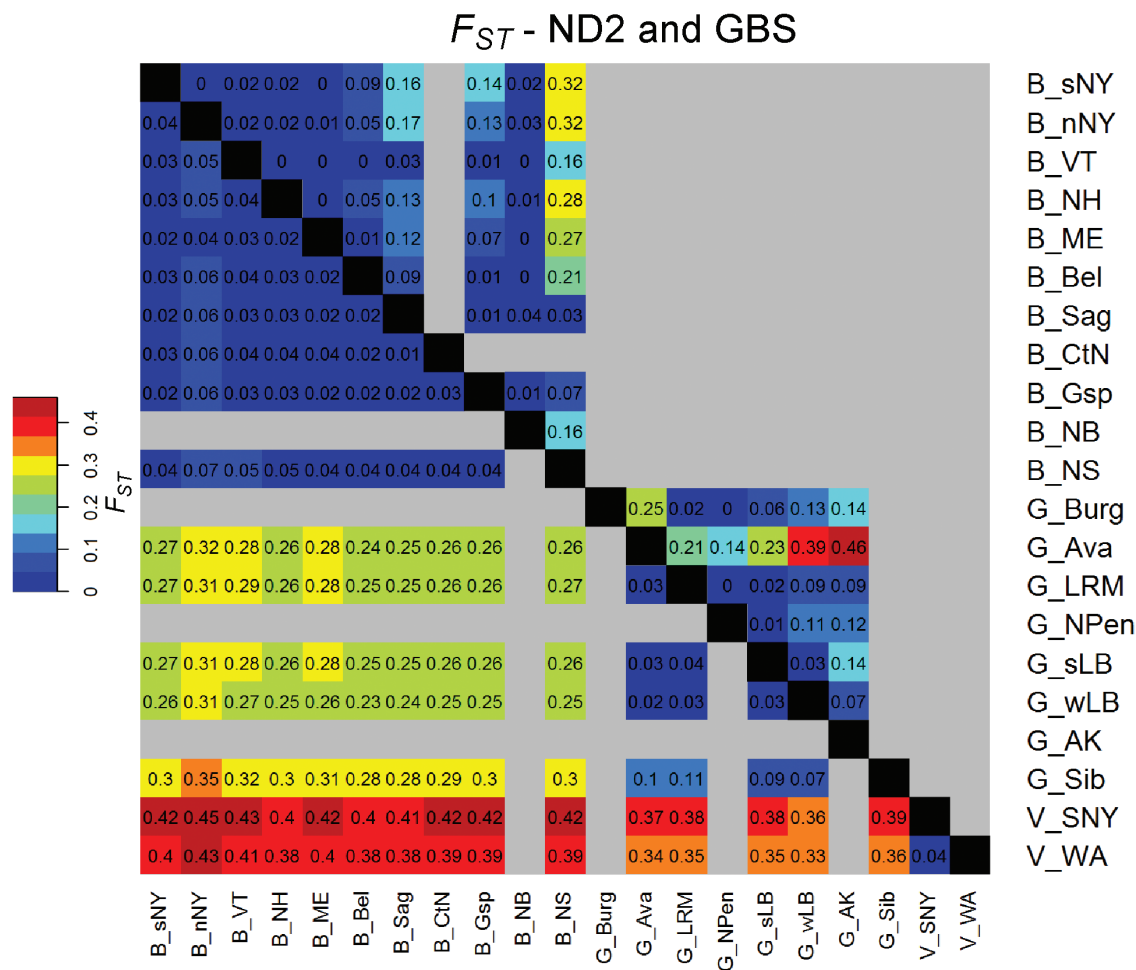
populations (range  $F_{ST} = 0.377$ –0.454) and Veery/Gray-cheeked Thrush populations (range  $F_{ST} = 0.328$ –0.387) than Bicknell's/Gray-cheeked Thrush population (range  $F_{ST} = 0.234$ –0.354). In general, Gray-cheeked Thrush from Siberia had slightly higher  $F_{ST}$  values (range  $F_{ST} = 0.279$ –0.354) than those from eastern Canada (range  $F_{ST} = 0.234$ –0.321) when compared to Bicknell's Thrush populations.

The presumed late migrant (NYSM zt-1480) possessed a Gray-cheeked Thrush SNP genotype and was not admixed. This bird was heavier (34.5 g), had a longer wing chord (105.0 mm), and a longer exposed culmen (14.3 mm) than most Bicknell's Thrushes (Frey et al. 2008; measurements from Y. Aubry, personal communication). Because it possessed a Gray-cheeked Thrush haplotype, non-admixed genotype, and Gray-cheeked Thrush morphological characteristics, its status as a misidentified late migrant was confirmed.

### Within-Species Population Structure

A total of 63 ND2 haplotypes were detected in 263 Bicknell's Thrush and Gray-cheeked Thrush ND2 sequences (Figure 1B, Table 1), and a further 28 haplotypes were found in 55 Veery samples. Pairwise distances within species averaged 0.30% (maximum: 0.96%) for Gray-cheeked-Thrush, 0.12% (maximum: 0.48%) for Bicknell's Thrush, and 0.29% (maximum: 0.96%) for Veery. We found high levels of ND2 sequence polymorphism within our sample of Gray-cheeked Thrush and slightly lower levels within Bicknell's Thrush (Table 1). Gray-cheeked Thrushes had more haplotypes, higher haplotype diversity, a greater number of pairwise differences, and greater nucleotide diversity compared to Bicknell's Thrushes. Tajima's  $D$  and Fu's  $F$  were significantly negative for both species, indicating recent population expansions. The mismatch distribution for Bicknell's Thrush was smooth and unimodal, and the sum of squared distributions and Harpending's raggedness index were significant, further supporting a recent population expansion. The Gray-cheeked Thrush mismatch distribution was bimodal, with peaks at 2–3 and 6 pairwise differences. The mismatch sum of squared differences and Harpending's raggedness index were low and not significant. Together, these results indicate that Gray-cheeked Thrush consists of 2 populations that underwent recent population expansions.

The most haplotype diverse Bicknell's Thrush population was from the Gaspé Peninsula in Québec (Table 1), while the Nova Scotia population was the most divergent, with 8 significant  $F_{ST}$  values out of 9 comparisons (Figure 3, Supplemental Material Table S5). All Bicknell's Thrush populations south of the St. Lawrence River were not significantly different from each other, except the Bellechasse, Québec, population, which showed slight difference with the S. New York ( $F_{ST} = 0.087$ ,  $P < 0.05$ ) and N. New York ( $F_{ST} = 0.052$ ,  $P < 0.05$ ) populations. A hierarchical AMOVA



**FIGURE 3.** Pairwise population comparisons of fixation indices ( $F_{ST}$ ) for mitochondrial ND2 (above the black diagonal) and 5,633 anonymous SNPs (below the black diagonal).  $F_{ST}$  values are indicated within each pixel. Gray pixels indicate no comparison. Between-species comparisons were not analyzed for ND2. Note that population inclusion and sizes were not identical for ND2 and SNP comparisons (see text). Population names can be found in [Figure 1](#) and [Table 1](#).

based on pairwise genetic distances comparing populations south (S. NY, N. NY, VT, NH, ME, and Bellechasse) and north (Saguenay, Gaspé, NB, and NS) of the St. Lawrence River (see [Figure 1A](#)) revealed that 10.0% of genetic variance was explained by these groupings ( $P < 0.01$ ,  $df = 2$  and 10). New Brunswick was not significantly different from any population, but this may be due to a small sample size ( $n = 11$ ); removing New Brunswick slightly increased the amount of genetic variance explained by the north/south groupings (12.8%,  $P < 0.01$ ,  $df = 2$  and 9). An AMOVA comparing the Nova Scotia population to all other populations grouped revealed that 15% of genetic variance was explained among these groupings ( $P < 0.01$ ,  $df = 2$  and 10) compared to within populations (83%,  $P > 0.1$ ).

Analyses using the SNP datasets, however, did not reveal a similar north/south grouping within Bicknell's Thrush. The highest levels of genetic differentiation almost always consisted of a pairing with either the Nova Scotia/New Brunswick or the northern New York population ([Figure](#)

[3](#), [Supplemental Material Table S5](#)). The single-species STRUCTURE analyses of SNP data did not reveal significant groupings; however, individuals from Nova Scotia tended to segregate out when  $K = 3$ , and 2 individuals from the Gaspé Peninsula were distinctive when  $K = 4$  ([Supplemental Material Figure S2A](#)). We found no major genetic breaks corresponding to geography in the ND2 haplotype network ([Figure 1B](#)) or SNP ancestry plot ([Supplemental Material Figure S2A](#)) and a Mantel test revealed large ( $r = 0.677$ ) and significant ( $P < 0.01$ ) isolation by distance among Bicknell's Thrush populations.

Ancestry plots revealed that Gray-cheeked Thrushes from Alaska/Siberia (*C. m. aliciae*) were distinct at  $K = 2$ , and individuals from western Labrador (*C. m. aliciae*) tended to segregate from Newfoundland/southern Labrador (*C. m. minimus*) when  $K = 3$  ([Supplemental Material Figure S2B](#)). Likelihood scores, however, did not specify a significant number of groupings. The Siberian population was moderately differentiated from the Newfoundland/

**TABLE 1.** Haplotype diversity measures for populations of Bicknell's Thrush, Gray-cheeked Thrush, and Veery based on complete sequences of ND2. Sample sizes are shown in parentheses. Tests involving statistical significance were not completed for populations with sample sizes <5. Number of haplotypes (*h*), number of private haplotypes (*hpriv*), haplotype diversity (*H*), average number of pairwise differences (*k*), nucleotide diversity (*π*), Tajima's *D*, Fu's *F<sub>s</sub>*, the expansion parameter *τ*, mismatch sum of squared deviation (SSD), Harpending's raggedness index (*r*). Significance level is indicated by asterisks (\* $<0.05$ , \*\* $<0.01$ ). Nfld refers to the island of Newfoundland, a subregion of the province of Newfoundland and Labrador, Canada.

Population	<i>h</i>	<i>hpriv</i>	<i>H</i>	<i>k</i>	$\pi$	Tajima's <i>D</i>	Fu's <i>F<sub>s</sub></i>	$\tau$	SSD	<i>r</i>
<b>Bicknell's Thrush (186)</b>	29	–	0.785	1.239	0.0012	–2.135*	–29.763**	1.4	0.011*	0.110**
S. New York (22)	3	1	0.554	0.797	0.0008	1.024	0.796	1.4	0.006	0.082
N. New York (20)	7	0	0.689	1.253	0.0012	–1.206	–2.726*	1.9	0.022	0.093
Vermont (20)	9	2	0.816	1.284	0.0012	–1.698*	–5.381**	1.4	0.017	0.138
New Hampshire (14)	4	1	0.648	0.769	0.0007	–0.565	–0.990	1.0	0.030	0.211
Maine (19)	6	1	0.655	0.901	0.0009	–1.539*	–2.679**	1.0	0.008	0.110
Bellechasse, Québec (19)	8	3	0.813	1.333	0.0013	–1.116	–3.907**	1.5	0.011	0.114
Saguenay, Québec (21)	8	2	0.786	1.248	0.0012	–1.163	–3.897**	1.7	0.040*	0.244*
Côte-Nord, Québec (3)	3	0	1.000	1.333	0.0013	–	–	–	–	–
Gaspé, Québec (20)	9	3	0.858	1.505	0.0015	–1.121	–4.596**	1.7	0.028	0.143
New Brunswick (11)	4	0	0.745	1.055	0.0010	0.101	–0.627	1.2	0.017	0.145
Nova Scotia (17)	6	3	0.706	1.515	0.0015	–0.927	–1.335	2.7	0.009	0.040
<b>Gray-cheeked Thrush (77)</b>	34	–	0.866	3.137	0.0030	–2.045*	–28.304**	3.2	0.003	0.009
Nova Scotia (2)	2	1	1.000	1.000	0.0010	–	–	–	–	–
Burgeo, Nfld (5)	3	2	0.800	3.400	0.0033	1.241	1.569	6.4	0.143	0.280
Avalon, Nfld (17)	4	3	0.331	1.456	0.0014	–1.361	0.688	3.0	0.063	0.477
Long Range Mts., Nfld (10)	7	5	0.911	4.133	0.0040	0.282	–1.203	6.4	0.041	0.105
N. Peninsula, Nfld (7)	5	3	0.857	1.143	0.0011	–1.434	–2.858**	1.5	0.063	0.347
S. Labrador (12)	6	1	0.818	2.227	0.0021	–1.026	–1.050	2.0	0.020	0.059
W. Labrador/Québec (14)	9	6	0.912	2.176	0.0020	–1.686	–4.462**	2.5	0.005	0.064
Alaska (7)	5	4	0.905	1.714	0.0017	–0.793	–1.889*	1.8	0.021	0.150
Siberia (3)	3	3	1.000	2.000	0.0019	–	–	–	–	–
<b>Veery (55)</b>	28	–	0.941	3.063	0.0029	–2.113*	–22.264**	2.1	0.001	0.021

southern Labrador (*C. m. minimus*) populations based on Hudson's  $F_{ST}$  (range:  $F_{ST} = 0.091$ – $0.107$ ; [Figure 3](#), [Supplemental Material Table S4](#)). Newfoundland/southern Labrador populations were similar to each other (range:  $F_{ST} = 0.029$ – $0.036$ ), and western Labrador showed higher similarity to Newfoundland/southern Labrador (range:  $F_{ST} = 0.025$ – $0.031$ ) than to Siberia ( $F_{ST} = 0.073$ ). A Mantel test of isolation by distance for ND2 was low and not significant ( $r = 0.315$ ,  $P > 0.1$ ) when including all Gray-cheeked Thrush populations. Note, however, our analyses did not include any intervening populations between western Labrador and Siberia. Taken together, the nuclear and mitochondrial results are consistent with a scenario in which *C. m. minimus* and *C. m. aliciae* diverged followed by subsequent nuclear gene flow between *C. m. minimus* and geographically adjacent populations of *C. m. aliciae*.

Veeries had high levels of genetic diversity based on ND2 despite uneven and sparse sampling ([Table 1](#)). This is perhaps unsurprising considering the large geographic range between sampling localities and the fact that Veeries have several recognized subspecies ([Heckscher et al. 2017](#)) and 3 of these subspecies were sequenced in this study: the eastern Veery (*C. fuscescens fuscescens*), the western Veery (*C. f. salicicola*), and the Newfoundland Veery (*C. f. fuliginosus*). At  $K = 2$ , the inferred ancestry plots split eastern and western Veeries ([Supplemental Material Figure S3C](#)), but Hudson's  $F_{ST}$  between eastern and western Veeries was fairly low ( $F_{ST} = 0.045$ ; [Figure 3](#), [Supplemental Material Table S5](#)). We do not discuss Veery population structure further due to sparse sampling.

### Pleistocene Refugia

Modern-day distribution models for balsam fir, black spruce, and paper birch had AUC values  $>0.85$ , indicating that each model fit the occurrence data well, so these SDMs were projected to the LGM of the Pleistocene ([Supplemental Material Table S6](#)). These species are broadly overlapping, and each scenario hindcasted similar LGM refugia locations for all 3 tree species ([Supplemental Material Figure S3](#)). All modern-day SDMs for thrushes had high ( $>0.89$ ) AUC values, indicating a high fit with the occurrence data, and were subsequently projected to the LGM ([Supplemental Material Table S6](#)). Both LGM scenarios show that Gray-cheeked Thrush had suitable habitat in Beringia, the central United States, and on the Grand Banks off the east coast of present-day Newfoundland ([Figure 4](#)). The CCSM4 scenario additionally identified suitable habitat near present-day New Jersey, Haida Gwaii, and north of the Northwest Territories. The Bicknell's Thrush MIROC scenario showed a large swath of suitable habitat in the southern United States. The CCSM4 scenario revealed suitable habitat on the continental shelf off the coast of Newfoundland and near present-day Maryland, Virginia, and North Carolina. Estimates

of overlap at the LGM between thrush species revealed only 8.2% overlap based on the MIROC scenario and 12.2% overlap in the CCSM4 scenario. Under the MIROC scenario, the overlap occurred in small patches from present-day Oklahoma east to Tennessee, whereas overlap for the CCSM4 scenario was found on the Grand Banks off Newfoundland and western North Carolina. As reported in [FitzGerald \(2017\)](#), the distribution of balsam fir was by far the highest contributor to the Bicknell's Thrush models, followed by precipitation of the warmest quarter and the distribution of black spruce. Gray-cheeked Thrush LGM models were driven more or less equally by the distribution of black spruce and summer temperature variables.

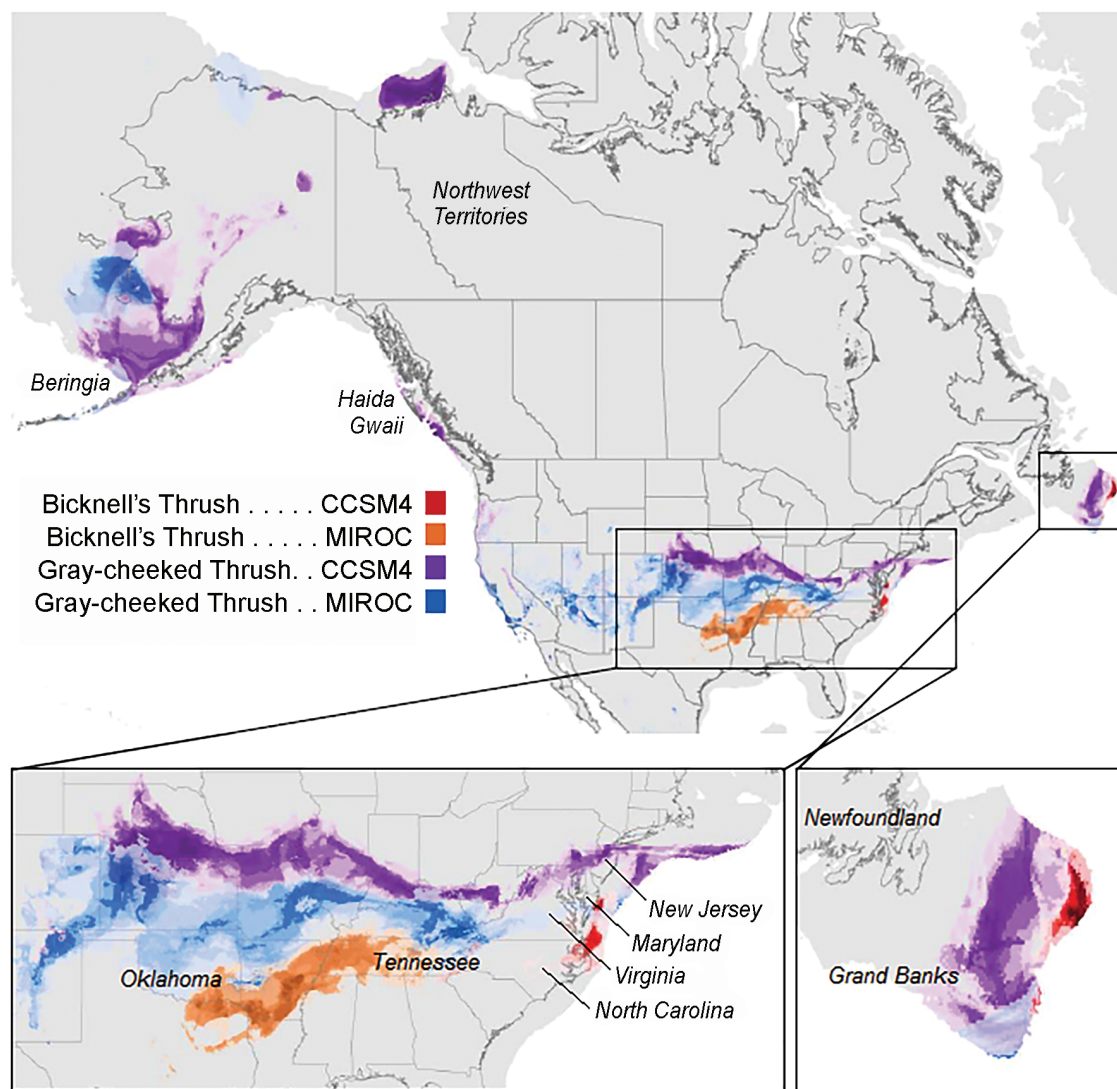
## DISCUSSION

### Species Limits and Admixture

We investigated species boundaries, admixture, gene flow, and geographic genetic structure within the Gray-cheeked Thrush/Bicknell's Thrush species complex utilizing the largest to-date sampling of individuals and genetic loci from these species and their closest relative, the Veery. The relationships and species boundaries in this clade have been the subject of extensive study by ornithologists for over a century, most prominently in the examinations of voice, morphometrics, and plumage color by [Wallace \(1939\)](#), [Ouellet \(1993\)](#), and [Marshall \(2001\)](#), and in molecular phylogenetic studies of the genus *Catharus* by [Outlaw et al. \(2003\)](#), [Klicka et al. \(2005\)](#), [Winker and Pruett \(2006\)](#), and [Voelker et al. \(2013\)](#). With the exception of a single individual that is a putative hybrid ([FitzGerald et al. 2017](#); discussed below), our ND2 sequences revealed that breeding individuals of the species were reciprocally monophyletic and are consistent with the [Voelker et al. \(2013\)](#) study which found that Gray-cheeked and Bicknell's thrushes are sister species. Our estimate of the coalescent times of the mitochondrial lineages (median = 420 kbp, mean = 518 kbp; [Supplemental Material Table S2](#)) agrees broadly with phylogenetic divergence dates calculated by [Weir and Schluter \(505 kbp; 2004\)](#) and [Voelker et al. \(410 kbp; 2013\)](#) and places the Bicknell's/Gray-cheeked Thrush divergence in the late Pleistocene. The dominant pattern of reciprocal monophyly, very few admixed individuals, lack of historic gene flow following their divergence in the Pleistocene, and our finding that 5,633 anonymous SNP loci consistently defined 3 groupings that correspond to the 3 species, support current classifications that recognize these as species-level taxa.

STRUCTURE plots of 5,633 SNPs revealed no inter-specific genetic admixture for Gray-cheeked Thrushes or Veeries, but did show low levels of admixture (2.8–11.0%) in 3 of 37 Bicknell's Thrushes. Bicknell's Thrush populations were genetically more similar to Gray-cheeked Thrushes from nearby populations than to Gray-cheeked Thrushes





**FIGURE 4.** Models of Bicknell's Thrush (red/orange) and Gray-cheeked Thrush (purple/blue) distributions under 2 LGM scenarios, CCSM4 (red or purple) and MIROC (orange or blue). Darker colors show higher suitability. The insets show habitat suitability during the LGM for the central United States and Newfoundland. The gray shows the extent of the land during the LGM; modern political boundaries, coastlines, and regions discussed in text are shown for reference.

from Siberia (Figure 3, Supplemental Material Table S4), and genetically admixed individuals were more likely to occur near the species' range boundaries (Figure 2D), suggesting that genetic admixture is better explained by a history of occasional hybridization events rather than shared ancestral polymorphism. The potential for occasional contact between the 2 species near their range boundaries is high because second-year Bicknell's Thrushes can disperse up to 700 km from their natal areas (Studds et al. 2012), a distance that likely far exceeds the gap between the species. In the early 20th century, the closest populations of Bicknell's Thrushes and Gray-cheeked Thrushes may have been only 60 km apart along the north shore of the Gulf of St. Lawrence (Marshall 2001), and the gap is apparently shrinking in Nova Scotia, where Gray-cheeked Thrushes

appear to have recently (since the 1990s) colonized some islands along Nova Scotia's eastern coast (Whittam 2015). The discovery of Gray-cheeked Thrushes likely breeding to the south of Bicknell's Thrushes that breed in northern Nova Scotia may be a harbinger of increased secondary contact between the species.

Perhaps more important than the potential contact between species at their range boundaries is the potential for introgression as migrating Gray-cheeked Thrushes pass through the breeding range of Bicknell's Thrush each spring. We identified a probable late-migrating Gray-cheeked Thrush captured in southern Québec that had <1% (95% CI: 0.0–0.7%) genetic admixture from Bicknell's Thrush using genotyped SNPs (Supplemental Material Table S3), supporting the fact that some Gray-cheeked Thrushes

are still migrating during the Bicknell's Thrush breeding season (Winker 2010, Townsend et al. 2015, Whitaker et al. 2018). Similarly, Marshall (2001) identified 2 other "misplaced" individuals: a male Gray-cheeked Thrush specimen (Canadian Museum of Nature 8298) collected in Percé, Gaspé, Quebec, on June 14, 1915, and a female Gray-cheeked Thrush specimen (Museum of Comparative Zoology 324734) collected on Mt. Washington, New Hampshire, on July 11, 1884. The breeding seasons of these 2 species overlap substantially; Gray-cheeked Thrushes arrive at breeding sites from mid-May to early June and have reported egg dates from June 6 to July 24 (Whitaker et al. 2018), and Bicknell's Thrushes arrive in mid- to late May and have reported egg dates from June 3 to July 28 (Townsend et al. 2015). Quay (1986) showed that thrushes can accumulate sperm in cloacal protuberances during migration before arrival on the breeding grounds, giving rise to the potential for cross-species fertilizations. The mating system of Gray-cheeked Thrush has not been studied, but the well-studied Bicknell's Thrush population that breeds in Vermont appears to be polygynandrous; both males and females mate with multiple partners and 69% of broods are sired by multiple males (Goetz et al. 2003). This propensity for extra-pair copulations may further increase the potential for occasional interbreeding as Gray-cheeked Thrushes migrate through the Bicknell's Thrush breeding range when both species are physiologically reproductive. The presence of 3 heavily backcrossed, admixed Bicknell's-like individuals within the range of Bicknell's Thrush is consistent with this scenario. In contrast, backcrossed individuals were not detected within the range of Gray-cheeked Thrush. Thus, despite the potential for geographic and temporal overlap between the species during the breeding season, hybridization apparently occurs very rarely, as evidenced by the mitochondrial and SNP analyses presented here. Increased sampling of individuals near their range limits could offer insight into the frequency of hybridization.

FitzGerald et al. (2017) identified one early generation Bicknell's/Gray-cheeked Thrush hybrid (NYSM zt-1278) based on mitochondrial and nuclear genetic evidence. This bird, captured on July 4, 2015, in southern Labrador, was phenotypically indistinguishable from Gray-cheeked Thrushes but carried an ND2 haplotype (not included in analyses in this study) that was widespread and common in Bicknell's Thrush (FitzGerald et al. 2017). Unfortunately, we failed to obtain SNP genotype data from this individual and are not able to resolve the question of its ancestry with this dataset. We performed a second set of IMA analyses of ND2 sequences in which we included the putative hybrid from southern Labrador. The estimated rate of gene flow jumped 2 orders of magnitude to  $m_2 = 0.032$  (95% HPD = 0.0077–0.1618), translating to  $10^{-7}$  introgressions per generation, while the values for all other parameters

remained essentially unchanged. Thus, even if we include the putative hybrid in our analyses we still find essentially zero gene flow between species following their split from a common ancestor, though we caution that the gene flow and population size estimates are based on the coalescence of a single locus. This may explain why our estimate of the global population size of Bicknell's Thrush (~500,000) is substantially higher than the 120,000 estimated by Hill and Lloyd (2017) from Mountain Birdwatch survey data and a Bayesian model of abundance and density, predicted by elevation latitude and a forest cover layer.

The chance discovery of this cryptic hybrid documents occasional interbreeding and highlights the importance of continued sampling and genetic analysis of individuals in this species complex. Martinsen et al. (2018) reported the only other genetically supported case of hybridization in this species complex when they documented a Veery/Bicknell's Thrush hybrid from Vermont that resembled a Veery in plumage and carried a Veery mitochondrial DNA haplotype, but sang songs of both species and was heterozygous for intron alleles that segregated between the 2 species. The close resemblance of *Catharus* species and the lack of sexual dimorphism in the group might mask the frequency of hybridization relative to groups such as the wood warblers (Parulidae), for which many interspecific and even intergeneric hybrids are known (McCarthy 2006). If real, the rarity of interbreeding between Gray-cheeked and Bicknell's thrushes is noteworthy and begs the question as to what isolating mechanisms are keeping these species from hybridizing.

In addition to allopatric breeding ranges, other prezygotic isolating mechanisms may inhibit interbreeding. For example, the Bicknell's Thrush breeds in balsam fir forests whereas the Gray-cheeked Thrush tends to breed in black spruce scrub, although the Gray-cheeked Thrush can use other habitat types, including balsam fir forests (Whitaker et al. 2015, FitzGerald 2017, Ralston et al. 2019). However, no work to date has examined the potential for behavioral isolation between the Bicknell's Thrush and Gray-cheeked Thrush. These species sing songs that vary slightly but have nearly identical calls (Ouellet 1993, Marshall 2001). They also overlap morphologically and can have similar plumage coloration, depending on the time of year (Ouellet 1993, Marshall 2001, Frey et al. 2008). A monumental study of thrush behavioral isolating mechanisms found that birds recognized conspecifics based on song type rather than plumage (Dilger 1956), but because the Bicknell's Thrush and Gray-cheeked Thrush were considered conspecific at the time, the Gray-cheeked Thrush was not included in the study. Observing natural behavioral interactions between the species is rare due to the difficulty of correctly identifying these species away from their allopatric breeding grounds, further inhibiting knowledge of how behavior influences isolation between these species. Strong

levels of postzygotic isolation are unlikely given the recent date of divergence and the long time frames required for intrinsic postzygotic isolation to accumulate in birds (Price and Bouvier 2002).

### Within-Species Genetic Structure

Breeding Bicknell's Thrushes are primarily restricted to high-elevation mountaintops, but their "sky-island" distribution does not appear to limit gene flow between most populations. Our finding of limited geographic genetic structure among isolated Bicknell's Thrush populations, except for isolation by distance, supports the findings of the only previous study of geographic genetic variation by Ellison (2001), who obtained partial Control Region III sequences from 43 Bicknell's Thrush. However, we found that populations south of the St. Lawrence River and west of New Brunswick were usually similar to each other. Likewise, most populations north and east of the St. Lawrence River were not significantly different from each other but were significantly different from the southern populations. We found evidence of isolation by distance based on ND2, but all pairwise  $F_{ST}$  values above 0.1 compared a population north/east of the St. Lawrence to a southerly one, and our AMOVA results indicate that a significant amount of genetic variation is explained by the north vs. south groupings. Clear groupings were not supported by the SNP data, but a northern population (Nova Scotia/New Brunswick) and a southern population (northern New York) were highly differentiated from each other and most other populations. Together, these results indicate that there is slight genetic structure within Bicknell's Thrush, but the structure is not driven by their "sky-island" breeding distribution or known modern-day geographic barriers.

The northern and southern mitochondrial groupings of the Bicknell's Thrush is surprising because all populations except Nova Scotia are <200 km from their nearest neighbor and most Bicknell's Thrushes disperse less than 200 km from their natal grounds (Studds et al. 2012). However, these genetic groupings may correspond to morphological differences within Bicknell's Thrush; Wallace (1939) described 2 color morphs, with "brown-backed" individuals found only in the southern part of their range, and an "olive" morph found in the Canadian Maritimes and north of the St. Lawrence River. Wallace's sample size was small and he found many "intermediates or intergrades" (p. 234). Further study of phenotypic variation within Bicknell's Thrush should examine mandibular coloration in addition to plumage coloration, as Gray-cheeked Thrush subspecies are distinguishable by the extent of yellow on the lower mandible (FitzGerald et al. 2017, Whitaker et al. 2018). We note, however, that ancestry analyses using 5,633 SNPs did not distinguish significant groupings, indicating that regular admixture occurs between populations.

As discussed in FitzGerald et al. (2017), mitochondrial data and morphological analyses support the current taxonomic splitting of Gray-cheeked Thrushes into 2 subspecies: *C. m. minimus* in Newfoundland and southeastern Labrador, and *C. m. aliciae* from central Labrador west to Siberia, although the subspecies were not reciprocally monophyletic. Interestingly, in the current study, ancestry analyses from SNP data revealed that individuals from western Labrador were more similar to *C. m. minimus* than to individuals from Alaska/Siberia, but segregated at  $K = 3$ ; however, the most likely number of groupings was ambiguous. This indicates that genetic differentiation between the subspecies is slight and probably only detectable at quickly evolving loci, but the rates of mutations at these nuclear SNPs are unknown. Nuclear and mitochondrial genes have different mutation rates and unique inheritance patterns (Toews and Brelsford 2012), potentially explaining why Gray-cheeked Thrush subspecies showed higher support with mtDNA vs. nuclear SNPs in this study.

### Effects of LGM Refugia on Species Boundaries and Population Structure

Our analyses indicate that Bicknell's Thrush and Gray-cheeked Thrush largely resided in allopatric refugia, with the potential for up to 8.2% or 12.2% overlap predicted depending on the LGM scenario. Bicknell's Thrush refugia were smaller and more southerly than those of the Gray-cheeked Thrush (Figure 4), reminiscent of their modern-day breeding ranges. Bicknell's Thrush is currently found in regions with a high abundance of balsam fir, whereas the Gray-cheeked Thrush is associated with a broader range of habitats, often including black spruce as well as alders, willows, and other deciduous shrubs (FitzGerald 2017, Whitaker et al. 2018), and the SDMs show that balsam fir and black spruce are also important contributors for the thrush models, respectively (FitzGerald 2017). Both spruce and fir expanded northward as the ice receded, but pollen records indicate that spruce migrated more quickly, reaching areas ~1,000 yr before fir (Davis 1983). In the modern era in which climate change is largely responsible for driving species range shifts, deciduous shrubs are colonizing the boreal–arctic ecotone even more quickly than conifers (Myers-Smith et al. 2011), coinciding with a Gray-cheeked Thrush expansion in northern Labrador (Whitaker 2017) and Alaska (Mizel et al. 2016). If Bicknell's Thrush primarily tracked habitats that included balsam fir while Gray-cheeked Thrush followed black spruce or shrubs, these 2 thrush species may have expanded northward at different times or rates, helping to maintain divergence in the past and continuing into the present day.

LGM models (Figure 4) show substantially less extensive suitable habitat compared to their modern breeding ranges (Figure 1A inset), and Tajima's  $D$  and Fu's  $F$  calculated from ND2 were significantly negative for both Bicknell's



Thrush and Gray-cheeked Thrush (Table 1), supporting a recent population expansion that likely occurred as boreal habitat expanded. The MIROC LGM model revealed a single, contiguous refugium in the southern United States for Bicknell's Thrush, whereas the CCSM4 scenario projects 2 distinct refugia at the LGM, consistent with the northern and southern population structure in our DNA data. Gray-cheeked Thrushes may have resided in multiple refugia during the LGM based on our Pleistocene-projected SDMs, and we speculate that the Newfoundland Gray-cheeked Thrush may have diverged while isolated in a refugium on the Grand Banks off present-day Newfoundland. The Newfoundland population may have retained its genetic distinctiveness from the Northern subspecies in part because of a distributional gap between the subspecies, currently ~200 km wide (FitzGerald et al. 2017). Population structure cannot be assessed in detail in the central or western parts of the Gray-cheeked Thrush breeding range without more samples, but genome-wide  $F_{ST}$  and STRUCTURE analyses do suggest that Siberian and Alaskan samples are genetically differentiated from Labrador samples, leaving the possibility that these far-west populations might have diverged in a Beringian refuge.

The Bicknell's Thrush and Gray-cheeked Thrush diverged in the mid- to late Pleistocene (Weir and Schluter 2004, Voelker et al. 2013, this study). Although gene divergence is expected to predate species divergence, these estimates are much older than the LGM scenarios we explored with our distribution models. Climate layers reflecting environments older than 150 ky do not currently exist (see [www.worldclim.org](http://www.worldclim.org)), precluding exploration of the species distributions at the time of divergence using SDM methods. We also caution that SDMs presume niche conservatism, which may not be applicable over hundreds of thousands of years.

### Performance of Pleistocene Scenarios

Validating the locations of Pleistocene bird refugia is difficult in the absence of avian fossils, but plant macrofossil and pollen records combined with genetic data from modern populations have revealed a fairly complete picture of range dynamics in tree species since the LGM. Black spruce is composed of several distinct genetic clusters, and palynological data and macrofossils show that black spruce may have resided in 5 disjunct refugia at the LGM: Beringia, Oregon/Washington, the central United States, the mid-Atlantic Coast/Appalachia, and on the Atlantic shelf off Newfoundland (Davis 1983, Jackson et al. 1997, Jaramillo-Correa et al. 2004, Williams et al. 2004, Brubaker et al. 2005). Our Gray-cheeked Thrush SDM from the CCSM4 climate scenario (Figure 4) revealed similar refugia to the black spruce SDM for the CCSM4 scenario (Supplemental Material Figure S3). The

MIROC scenario showed a large swath of suitable habitat in the southern/central United States and the mid-Atlantic Coast, but hindcasted no suitable habitat in western North America or Newfoundland. Whereas spruce was widespread throughout North America south of the Laurentide ice sheet, the pollen and macrofossil records dating from 15–21 kbp shows that species of fir (*Abies*) occurred in patchy, small, and isolated regions in the south/central United States and off the mid-Atlantic Coast (Davis 1983, Jackson et al. 1997). Both LGM scenarios identified these regions as potential refugia for balsam fir, and the CCSM4 model also predicted suitable habitat off Newfoundland; Bicknell's Thrush LGM refugia (Figure 4) were similar to that for balsam fir (Supplemental Material Figure S3). Our work stresses the need to examine different modeling scenarios and to attempt to validate models using multiple lines of evidence when available.

### What Makes the Evolutionary History of the Bicknell's/Gray-Cheeked Thrush Species Complex Unique?

Many boreal bird species complexes have congruent biogeographic breaks in western North America, a pattern that is often interpreted as vicariant speciation in allopatric ice-free forest refugia (e.g., Zink 1994, Weir and Schluter 2004, van Els et al. 2012). Some studies have shown that bird populations breeding on Newfoundland are genetically distinct, but that enough gene flow occurs between island and mainland populations to prevent speciation (Colbeck et al. 2008, van Els et al. 2012, Lait and Burg 2013, Dohms et al. 2017, FitzGerald et al. 2017). The unique (among birds) eastern species-level break between Bicknell's Thrush and Gray-cheeked Thrush is similar to the break between black spruce and red spruce (*P. rubens*). Red spruce is found primarily in cool, well-drained soils in the Appalachians, New York, New England, southern Québec, New Brunswick, and Nova Scotia, whereas black spruce is found in abundance from Alaska across the continent to the Atlantic in diverse plant communities and soil types. Genetic evidence, however, shows that red spruce is phylogenetically nested within black spruce (Perron et al. 2000, Jaramillo-Correa and Bousquet 2003), a pattern we do not see in our thrush species complex. This suggests that either (1) cryptic species breaks in eastern North American boreal forest species may remain undiscovered or (2) another factor, such as divergent natural selection, high migratory connectivity, or interspecific competition, has played a role in the divergence of the Bicknell's/Gray-cheeked Thrush species complex.

If populations diverge in allopatry under similar ecological conditions, they will exhibit niche conservatism (Peterson et al. 1999, Wiens and Graham 2005, Warren et al. 2008). Because the Bicknell's Thrush and Gray-cheeked Thrush are sister taxa that breed allopatrically, yet are part of similar bird species communities in the boreal forest,



we might expect that these species inhabit similar niches (Gause 1934, Svardson 1949). Contrary to this expectation, FitzGerald (2017) found that they occupy distinct niches despite the fact that similar niche space is available to each species. In conclusion, the Bicknell's Thrush and Gray-cheeked Thrush are sister species, have a phylogeographic break that—to our knowledge—is unique among boreal bird species, and occupy divergent niches, implying that ecological selection pressures may have resulted in divergence and the maintenance of species' boundaries.

## ACKNOWLEDGMENTS

We wish to thank the following individuals for their help in the field obtaining blood samples: Rinchen Boardman, Joe Bopp, Vernon Buckle, Edward FitzGerald, Kyle Ford, Matthew Halley, Kathryn Hoo, Jenna McDermott, Chris Rimmer, Randy Thompson, Alison Van Keuren, Robert Vlug and Eastern Outdoors, Lucy Welsh, and Celina Willis. For providing additional tissue samples we thank Paul Sweet (American Museum of Natural History), Sharon Birks (Burke Museum of Natural History), Kevin Winker (University of Alaska Museum of the North), Becky Whittam (Bird Studies Canada), Chris Rimmer and Kent McFarland at Vermont Center for Ecostudies, and especially Yves Aubry of the Canadian Wildlife Service, who contributed many Bicknell's Thrush samples from Quebec. Special thanks to Walter Ellison for his pioneering work on this species complex and for archiving his blood samples at the American Museum of Natural History. For valuable discussions and comments on previous drafts of this paper we are grateful to Katy Gonder, George Robinson, Caro-Beth Stewart, and three anonymous reviewers.

**Funding statement:** Funding for field work and lab work was provided by the American Ornithologists' Union's Werner and Hildegard Hesse research award (to A.M.F.), American Museum of Natural History Frank Chapman fund (to A.M.F.), Centre for Forest Science and Innovation (Newfoundland and Labrador Department of Natural Resources) (to I.G.W., D.M.W., A.M.F., J.J.K., and J.R.R.), Natural Sciences and Engineering Research Council of Canada (NSERC) Discovery Grants RGPIN-2016-06538 and NSERC Discovery Accelerator Grant 492890 (to J.T.W.), University at Albany Benevolent Association award (to A.M.F.), University at Albany Graduate Student Association research grant (to A.M.F.), Northern New York Audubon Society's Cullman Conservation grant (to J.J.K.), and the New York State Museum (to A.M.F. and J.J.K.).

**Ethics statement:** All fieldwork and tissue transportation were conducted under permits issued to the authors by the US Fish and Wildlife Service, US Department of Agriculture, the states of New York, Vermont, and Maine, and the Province of Newfoundland and Labrador, and approved by the University at Albany IACUC.

**Author contributions:** A.M.F. and J.J.K. conceived the idea, design, experiment (supervised research, formulated

question or hypothesis). A.M.F., J.W., J.R., I.G.W., D.M.W., and J.J.K. performed the experiments (collected data, conducted the research). A.M.F., J.W., J.R., I.G.W., D.M.W., and J.J.K. wrote the paper. A.M.F., J.R., and J.J.K. developed or designed methods. A.M.F., J.W., and J.J.K. analyzed the data. A.M.F., J.W., J.R., I.G.W., D.M.W., and J.J.K. contributed substantial materials, resources, or funding.

**Data depository:** Analyses reported in this article can be reproduced using the data provided by FitzGerald et al. (2019). Mitochondrial genetic data is deposited in GenBank <https://www.ncbi.nlm.nih.gov/genbank/>

**Conflict of Interest statement:** We have no conflict of interests to declare.

**Supplementary material:** Supplementary material is available at *The Auk: Ornithological Advances* online.

## LITERATURE CITED

- Able, K. P., and B. R. Noon (1976). Avian community structure along elevational gradients in the northeastern United States. *Oecologia* 26:275–294.
- Arbogast, B. S., and G. J. Kenagy (2001). Comparative phylogeography as an integrative approach to historical biogeography. *Journal of Biogeography* 28:819–825.
- Arbogast, B. S., and J. B. Slowinski (1998). Pleistocene speciation and the mitochondrial DNA clock. *Science* 282:1955.
- Baldassarre, D. T., T. A. White, J. Karubian, and M. S. Webster (2014). Genomic and morphological analysis of a semipermeable avian hybrid zone suggests asymmetrical introgression of a sexual signal. *Evolution* 68:2644–2657.
- Barrera-Guzmán, A. O., A. Aleixo, M. D. Shawkey, and J. T. Weir (2018). Hybrid speciation leads to novel male secondary sexual ornamentation of an Amazonian bird. *Proceedings of the National Academy of Sciences USA* 115:E218–E225.
- Bhatia, G., N. J. Patterson, S. Sankararaman, and A. L. Price (2013). Estimating and interpreting *FST*: The impact of rare variants. *Genome Research* 23:1514–1521.
- Bicknell, E. P. (1882). A sketch of the home of *Hylocichla aliciae bicknelli*, Ridgway, with some critical remarks on the allies of this new race. *Bulletin of the Nuttall Ornithological Club* 7:152–159.
- Bouckaert, R., and J. Heled (2014). DensiTree 2: Seeing trees through the forest. *bioRxiv* 012401.
- Bouckaert, R., J. Heled, D. Kühnert, T. Vaughan, C. H. Wu, D. Xie, M. A. Suchard, A. Rambaut, and A. J. Drummond (2014). BEAST 2: A software platform for Bayesian evolutionary analysis. *PLoS Computational Biology* 10:e1003537.
- Bradbury, P. J., Z. Zhang, D. E. Kroon, T. M. Casstevens, Y. Ramdoss, and E. S. Buckler (2007). TASSEL: Software for association mapping of complex traits in diverse samples. *Bioinformatics* 23:2633–2635.
- Brewster, W. (1883). Bicknell's Thrush (*Turdus aliciae bicknelli*) in New England. *Bulletin of the Nuttall Ornithological Club* 8:12–17.
- Brubaker, L. B., P. M. Anderson, M. E. Edwards, and A. V. Lozhkin (2005). Beringia as a glacial refugium for boreal trees and

- shrubs: New perspectives from mapped pollen data. *Journal of Biogeography* 32:833–848.
- Bryant, D., R. Bouckaert, J. Felsenstein, N. A. Rosenberg, and A. RoyChoudhury (2012). Inferring species trees directly from biallelic genetic markers: Bypassing gene trees in a full coalescent analysis. *Molecular Biology and Evolution* 29:1917–1932.
- Clark, P. U., A. S. Dyke, J. D. Shakun, A. E. Carlson, J. Clark, B. Wohlfarth, J. X. Mitrovica, S. W. Hostetler, and A. M. McCabe (2009). The last glacial maximum. *Science* 325:710–714.
- Colbeck, G. J., H. L. Gibbs, P. P. Marra, K. Hobson, and M. S. Webster (2008). Phylogeography of a widespread North American migratory songbird (*Setophaga ruticilla*). *Journal of Heredity* 99:453–463.
- COSEWIC (2009). COSEWIC Assessment and Status Report on the Bicknell's Thrush *Catharus bicknelli* in Canada. Committee on the Status of Endangered Wildlife in Canada, Ottawa, Canada.
- COSEWIC (2013). Candidate List of Wildlife Species. Committee on the Status of Endangered Wildlife in Canada, Ottawa, Canada.
- Coyne, J. A., and H. A. Orr (2004). Speciation. Sunderland, MA, USA.
- Davis, M. B. (1983). Quaternary history of deciduous forests of eastern North America and Europe. *Annals of the Missouri Botanical Garden* 70:550–563.
- DeSante, D. F., D. R. Kaschube, and J. F. Saracco (2015). Vital Rates of North American Landbirds. The Institute for Bird Populations. [www.VitalRatesOfNorthAmericanLandbirds.org](http://www.VitalRatesOfNorthAmericanLandbirds.org)
- Dilger, W. C. (1956). Hostile behavior and reproductive isolating mechanisms in the avian genera *Catharus* and *Hylocichla*. *The Auk* 73:313–353.
- Dohms, K. M., B. A. Graham, and T. M. Burg (2017). Multilocus genetic analyses and spatial modeling reveal complex population structure and history in a widespread resident North American passerine (*Perisoreus canadensis*). *Ecology and Evolution* 7:9869–9889.
- Drummond, A. J., and R. R. Bouckaert (2015). Bayesian Evolutionary Analysis with BEAST. Cambridge University Press, Cambridge, UK.
- Drummond, A. J., M. A. Suchard, D. Xie, and A. Rambaut (2012). Bayesian phylogenetics with BEAUti and the BEAST 1.7. *Molecular Biology and Evolution* 29:1969–1973.
- Ellison, W. G. (2001). Population structure and gene flow in two long-distance migrant birds, the Bicknell's Thrush (*Catharus bicknelli*) and Veery (*Catharus fuscescens*). Ph.D. dissertation, State University of New York, Albany, NY, USA.
- Elshire, R. J., J. C. Glaubitz, Q. Sun, J. A. Poland, K. Kawamoto, E. S. Buckler, and S. E. Mitchell (2011). A robust, simple genotyping-by-sequencing (GBS) approach for high diversity species. *PLOS One* 6:e19379.
- Environment Canada (2014). North American Breeding Bird Survey - Canadian Trends Website, Data-version 2012. Environment Canada, Gatineau, QC, Canada.
- Evanno, G., S. Regnaut, and J. Goudet (2005). Detecting the number of clusters of individuals using the software STRUCTURE: A simulation study. *Molecular Ecology* 14:2611–2620.
- Excoffier, L., and H. E. Lischer (2010). Arlequin suite ver 3.5: A new series of programs to perform population genetics analyses under Linux and Windows. *Molecular Ecology Resources* 10:564–567.
- Falush, D., M. Stephens, and J. K. Pritchard (2003). Inference of population structure using multilocus genotype data: Linked loci and correlated allele frequencies. *Genetics* 164:1567–1587.
- FitzGerald, A. M. (2017). Division within the North American boreal forest: Ecological niche divergence between the Bicknell's Thrush (*Catharus bicknelli*) and Gray-cheeked Thrush (*C. minimus*). *Ecology and Evolution* 7:5285–5295.
- FitzGerald, A. M., J. Weir, J. Ralston, I. G. Warkentin, D. M. Whitaker, and J. J. Kirchman (2019). Data from: Genetic structure and biogeographic history of the Bicknell's Thrush/Gray-cheeked Thrush species complex. *The Auk: Ornithological Advances* 137:1–20. doi:10.5061/dryad.vt4b8gtn1
- FitzGerald, A. M., D. Whitaker, J. Ralston, J. Kirchman, and I. Warkentin (2017). Taxonomy and distribution of the imperiled Newfoundland Gray-cheeked Thrush, *Catharus minimus minimus*. *Avian Conservation and Ecology* 12:10. doi:10.5751/ACE-00976-120110
- Frey, S. J., C. C. Rimmer, K. P. McFarland, and S. Menu (2008). Identification and sex determination of Bicknell's Thrushes using morphometric data. *Journal of Field Ornithology* 79:408–420.
- Gause, G. F. (1934). *The Struggle for Existence*. Williams & Wilkins, Baltimore, MD, USA.
- Goetz, J. E., K. P. McFarland, and C. C. Rimmer (2003). Multiple paternity and multiple male feeders in Bicknell's Thrush (*Catharus bicknelli*). *The Auk* 120:1044–1053.
- Harvey, M. G., and R. T. Brumfield (2015). Genomic variation in a widespread Neotropical bird (*Xenops minutus*) reveals divergence, population expansion, and gene flow. *Molecular Phylogenetics and Evolution* 83:305–316.
- Heckscher, C. M., L. R. Bevier, A. F. Poole, W. Moskoff, P. Pyle, and M. A. Patten (2017). Veery (*Catharus fuscescens*), version 3.0. In *The Birds of North America* (P. G. Rodewald, Editor). Cornell Lab of Ornithology, Ithaca, NY, USA. <https://doi.org/10.2173/bna.veery.03>
- Hewitt, G. M. (2004). Genetic consequences of climatic oscillations in the Quaternary. *Philosophical Transactions of the Royal Society of London, Series B, Biological Sciences* 359:183–195; discussion 195.
- Hey, J., and R. Nielsen (2007). Integration within the Felsenstein equation for improved Markov chain Monte Carlo methods in population genetics. *Proceedings of the National Academy of Sciences USA* 104:2785–2790.
- Hill, J. M., and J. D. Lloyd (2017). A fine-scale US population estimate of a montane spruce–fir bird species of conservation concern. *Ecosphere* 8:e01921.
- Hijmans, R. J., S. E. Cameron, J. L. Parra, P. G. Jones, and A. Jarvis (2005). Very high resolution interpolated climate surfaces for global land areas. *International Journal of Climatology* 25:1965–1978.
- Jackson, S. T., J. T. Overpeck, T. Webb III, S. E. Keatts, and K. H. Anderson (1997). Mapped plant-macrofossil and pollen records of late Quaternary vegetation change in eastern North America. *Quaternary Science Reviews* 16:1–70.
- Jaramillo-Correa, J. P., and J. Bousquet (2003). New evidence from mitochondrial DNA of a progenitor-derivative species relationship between black spruce and red spruce (Pinaceae). *American Journal of Botany* 90:1801–1806.
- Jaramillo-Correa, J. P., J. Beaulieu, and J. Bousquet (2004). Variation in mitochondrial DNA reveals multiple distant glacial refugia

- in black spruce (*Picea mariana*), a transcontinental North American conifer. *Molecular Ecology* 13:2735–2747.
- Jeffries, D. L., G. H. Copp, L. Lawson Handley, K. H. Olsén, C. D. Sayer, and B. Hänfling (2016). Comparing RADseq and microsatellites to infer complex phylogeographic patterns, an empirical perspective in the Crucian carp, *Carassius carassius*, L. *Molecular Ecology* 25:2997–3018.
- Klicka, J., and R. M. Zink (1997). The importance of recent ice ages in speciation: A failed paradigm. *Science* 277:1666–1669.
- Klicka, J., G. Voelker, and G. M. Spellman (2005). A molecular phylogenetic analysis of the “true thrushes” (Aves: Turdinae). *Molecular Phylogenetics and Evolution* 34:486–500.
- Lait, L. A., and T. M. Burg (2013). When east meets west: Population structure of a high-latitude resident species, the Boreal Chickadee (*Poecile hudsonicus*). *Heredity* 111:321–329.
- Lambert, J. D., K. P. McFarland, C. C. Rimmer, S. D. Faccio, and J. L. Atwood (2005). A practical model of Bicknell’s Thrush distribution in the northeastern United States. *The Wilson Bulletin* 117:1–11.
- Lanfear, R., B. Calcott, S. Y. Ho, and S. Guindon (2012). PartitionFinder: Combined selection of partitioning schemes and substitution models for phylogenetic analyses. *Molecular Biology and Evolution* 29:1695–1701.
- Lee, P. Y., and J. T. Rotenberry (2005). Relationships between bird species and tree species assemblages in forested habitats of eastern North America. *Journal of Biogeography* 32:1139–1150.
- Lerner, H. R., M. Meyer, H. F. James, M. Hofreiter, and R. C. Fleischer (2011). Multilocus resolution of phylogeny and timescale in the extant adaptive radiation of Hawaiian honeycreepers. *Current Biology* 21:1838–1844.
- Linck, E., and C. J. Battey (2019). Minor allele frequency thresholds strongly affect population structure inference with genomic data sets. *Molecular Ecology Resources* 19:639–647.
- Lu, F., A. E. Lipka, J. Glaubitz, R. Elshire, J. H. Cherney, M. D. Casler, E. S. Buckler, and D. E. Costich (2013). Switchgrass genomic diversity, ploidy, and evolution: Novel insights from a network-based SNP discovery protocol. *PLoS Genetics* 9:e1003215.
- Lynch, M. (2009). Estimation of allele frequencies from high-coverage genome-sequencing projects. *Genetics* 182:295–301.
- Marshall, J. T. (2001). The Gray-cheeked Thrush: *Catharus minimus*, and its New England subspecies, Bicknell’s Thrush, *Catharus minimus bicknelli*. *Nuttall Ornithological Club* 28, Massachusetts, USA.
- Martinsen, E. S., K. P. McFarland, and C. C. Rimmer (2018). Documentation of a hybrid Bicknell’s Thrush (*Catharus bicknelli*) × Veery (*C. fuscescens*) using vocalization and genetic data. *The Wilson Journal of Ornithology* 130:70–80.
- Mason, N. A., and S. A. Taylor (2015). Differentially expressed genes match bill morphology and plumage despite largely undifferentiated genomes in a Holarctic songbird. *Molecular Ecology* 24:3009–3025.
- Matteson, M. (2012). Petition to List the Bicknell’s Thrush (*Catharus bicknelli*) as Threatened or Endangered under the Endangered Species Act. Center for Biological Diversity, Northeast Regional Office, Richmond, VT. [http://www.biologicaldiversity.org/species/birds/Bicknells\\_thrush/pdfs/Bicknells\\_Thrush\\_Petition.pdf](http://www.biologicaldiversity.org/species/birds/Bicknells_thrush/pdfs/Bicknells_Thrush_Petition.pdf)
- Matthews, S. N., L. R. Iverson, A. M. Prasad, and M. P. Peters (2011). Changes in potential habitat of 147 North American breeding bird species in response to redistribution of trees and climate following predicted climate change. *Ecography* 34:933–945.
- McCarthy, E. M. (2006). Wood warblers. In *Handbook of Avian Hybrids of the World*. Oxford University Press, NY, USA. pp. 307–315.
- Mitchell, M. W., B. Rowe, P. R. S. Clee, and M. K. Gonder (2013). TESS Ad-Mixer: A novel program for visualizing TESS Q matrices. *Conservation Genetics Resources* 5:1075–1078.
- Mix, A. C., E. Bard, and R. Schneider (2001). Environmental processes of the ice age: Land, oceans, glaciers (EPILOG). *Quaternary Science Reviews* 20:627–657.
- Mizel, J. D., J. H. Schmidt, C. L. McIntyre, and C. A. Roland (2016). Rapidly shifting elevational distributions of passerine species parallel vegetation change in the subarctic. *Ecosphere* 7:e01264.
- Monroe, B. L., R. C. Banks, J. W. Fitzpatrick, T. R. Howell, N. K. Johnson, H. Ouellet, J. V. Remsen, and R. W. Storer (1995). Fortieth supplement to the American Ornithologists’ Union check-list of North American Birds. *The Auk* 112:819–830.
- Myers-Smith, I. H., B. C. Forbes, M. Wilmking, M. Hallinger, T. Lantz, D. Blok, K. D. Tape, M. Macias-Fauria, U. Sass-Klaassen, E. Levesque, et al. (2011). Shrub expansion in tundra ecosystems: Dynamics, impacts and research priorities. *Environmental Research Letters* 6:045509.
- Noon, B. R. (1981). The distribution of an avian guild along a temperate elevational gradient: The importance and expression of competition. *Ecological Monographs* 51:105–124.
- Ouellet, H. (1993). Bicknell’s Thrush: Taxonomic status and distribution. *The Wilson Bulletin* 105:545–572.
- Outlaw, D. C., G. Voelker, B. Mila, and D. J. Girman (2003). Evolution of long-distance migration in and historical biogeography of *Catharus* thrushes: A molecular phylogenetic approach. *The Auk* 120:299–310.
- Peakall, R., and P. E. Smouse (2006). GENALEX 6: Genetic analysis in Excel. Population genetic software for teaching and research. *Molecular Ecology Notes* 6:288–295.
- Perron, M., D. J. Perry, C. Andalo, and J. Bousquet (2000). Evidence from sequence-tagged-site markers of a recent progenitor-derivative species pair in conifers. *Proceedings of the National Academy of Sciences USA* 97:11331–11336.
- Peterson, A. T. (2011). Ecological niche conservatism: A time-structured review of evidence. *Journal of Biogeography* 38:817–827.
- Peterson, A. T., J. Soberón, and V. Sánchez-Cordero (1999). Conservatism of ecological niches in evolutionary time. *Science* 285:1265–1267.
- Phillips, S. J., R. P. Anderson, and R. E. Schapire (2006). Maximum entropy modeling of species geographic distributions. *Ecological Modelling* 190:231–259.
- Price, T. (2008). *Speciation in Birds*. Roberts and Company Publishers, Greenwood Village, CO, USA.
- Price, T. D., and M. M. Bouvier (2002). The evolution of F1 postzygotic incompatibilities in birds. *Evolution* 56:2083–2089.
- Pritchard, J. K., M. Stephens, and P. Donnelly (2000). Inference of population structure using multilocus genotype data. *Genetics* 155:945–959.
- Quay, W. B. (1986). Cloacal protuberance and cloacal sperm in passerine birds: Comparative study of quantitative relations. *The Condor* 88:160–168.



- Ralston, J., and J. J. Kirchman (2012). Continent-scale genetic structure in a boreal forest migrant, the Blackpoll Warbler (*Setophaga striata*). *The Auk* 129:467–478.
- Ralston, J., A. M. FitzGerald, S. E. Scanga, and J. J. Kirchman (2019). Observations of habitat associations in boreal forest birds and the geographic variation in bird community composition. *The Wilson Journal of Ornithology* 131:12–23.
- Ralston, J., D. I. King, W. V. DeLuca, G. J. Niemi, M. J. Glennon, J. C. Scarl, and J. D. Lambert (2015). Analysis of combined data sets yields trend estimates for vulnerable spruce-fir birds in northern United States. *Biological Conservation* 187:270–278.
- Rambaut, A., M. A. Suchard, D. Xie, and A. J. Drummond (2014). Tracer v1. 6. 2014. <http://beast.bio.ed.ac.uk/Tracer>
- Ridgway, R. (1881). Descriptions of two new thrushes from the United States. *Proceedings of the U.S. National Museum* 4:377–378.
- Rimmer, C. C., and K. P. McFarland (2013). Bicknell's Thrush: A twenty-year retrospective on the Northeast's most vulnerable songbird. *Bird Observer* 41:8–16.
- Rodenhouse, N. L., S. N. Matthews, K. P. McFarland, J. D. Lambert, L. R. Iverson, A. Prasad, T. S. Sillett, and R. T. Holmes (2008). Potential effects of climate change on birds of the Northeast. *Mitigation and Adaptation Strategies for Global Change* 13:517–540.
- Rozas, J., J. C. Sánchez-DelBarrio, X. Messeguer, and R. Rozas (2003). DnaSP, DNA polymorphism analyses by the coalescent and other methods. *Bioinformatics* 19:2496–2497.
- Ruegg, K. C., and T. B. Smith (2002). Not as the crow flies: A historical explanation for circuitous migration in Swainson's Thrush (*Catharus ustulatus*). *Proceedings of the Royal Society of London B: Biological Sciences* 269:1375–1381.
- Sauer, J. R., D. K. Niven, K. L. Pardieck, D. J. Ziolkowski, Jr., and W. A. Link (2017). Expanding the North American Breeding Bird Survey analysis to include additional species and regions. *Journal of Fish and Wildlife Management* 8:154–172.
- [SSAC] Species Status Advisory Committee (2010). The status of Gray-Cheeked Thrush (*Catharus minimus*) in Newfoundland and Labrador. Government of Newfoundland and Labrador, St. John's. [http://www.flr.gov.nl.ca/wildlife/endangered/species/ssac/Gray-cheeked\\_Thrush\\_2010\\_SSAC.pdf](http://www.flr.gov.nl.ca/wildlife/endangered/species/ssac/Gray-cheeked_Thrush_2010_SSAC.pdf)
- Studds, C. E., K. P. McFarland, Y. Aubry, C. C. Rimmer, K. A. Hobson, P. P. Marra, and L. I. Wassenaar (2012). Stable-hydrogen isotope measures of natal dispersal reflect observed population declines in a threatened migratory songbird. *Diversity and Distributions* 18:919–930.
- Svärdson, G. (1949). Competition and habitat selection in birds. *Oikos* 1:157–174.
- Toews, D. P., and A. Brelsford (2012). The biogeography of mitochondrial and nuclear discordance in animals. *Molecular Ecology* 21:3907–3930.
- Townsend, J. M., K. P. McFarland, C. C. Rimmer, W. G. Ellison, and J. E. Goetz (2015). Bicknell's Thrush (*Catharus bicknelli*), version 2.0. In *The Birds of North America* (P. G. Rodewald, Editor). Cornell Lab of Ornithology, Ithaca, NY, USA. <https://doi.org/10.2173/bna.592>
- van Els, P., C. Cicero, and J. Klicka (2012). High latitudes and high genetic diversity: Phylogeography of a widespread boreal bird, the Gray Jay (*Perisoreus canadensis*). *Molecular Phylogenetics and Evolution* 63:456–465.
- Vertenstein, M., T. Craig, A. Middleton, D. Feddema, and C. Fischer (2010). CCSM4.0 User's Guide. National Center for Atmospheric Research, National Science Foundation, Boulder, CO. [http://www.cesm.ucar.edu/models/ccsm4.0/ccsm\\_doc/book1.html](http://www.cesm.ucar.edu/models/ccsm4.0/ccsm_doc/book1.html)
- Voelker, G., R. C. Bowie, and J. Klicka (2013). Gene trees, species trees and Earth history combine to shed light on the evolution of migration in a model avian system. *Molecular Ecology* 22:3333–3344.
- Wallace, G.J. (1939). Bicknell's Thrush, its taxonomy, distribution, and life history. *Proceedings of the Boston Society of Natural History* 41:211–402.
- Warren, D. L., R. E. Glor, and M. Turelli. (2008). Environmental niche equivalency versus conservatism: Quantitative approaches to niche evolution. *Evolution* 62:2868–2883.
- Warren, D. L., R. E. Glor, and M. Turelli (2010). ENMTTools: A toolbox for comparative studies of environmental niche models. *Ecography* 33:607–611.
- Watanabe, S., T. Hajima, K. Sudo, T. Nagashima, T. Takemura, H. Okajima, T. Nozawa, H. Kawase, M. Abe, T. Yokohata, et al. (2011). MIROC-ESM 2010: Model description and basic results of CMIP5-20c3m experiments. *Geoscientific Model Development* 4:845–872.
- Weir, J. T., and D. Schluter (2004). Ice sheets promote speciation in boreal birds. *Proceedings of the Royal Society of London B: Biological Sciences* 271:1881–1887.
- Weir, J. T., M. S. Faccio, P. Pulido-Santacruz, A. O. Barrera-Guzmán, and A. Aleixo (2015). Hybridization in headwater regions, and the role of rivers as drivers of speciation in Amazonian birds. *Evolution* 69:1823–1834.
- Whitaker, D. (2017). Expanded range limits of boreal birds in the Torngat Mountains of Northern Labrador. *The Canadian Field-Naturalist* 131:55–62.
- Whitaker, D., P. Taylor, and I. Warkentin (2015). Gray-cheeked Thrush (*Catharus minimus minimus*) distribution and habitat use in a montane forest landscape of western Newfoundland, Canada. *Avian Conservation and Ecology* 10:2.
- Whitaker, D. M., I. G. Warkentin, J. P. B. McDermott, P. E. Lowther, C. C. Rimmer, B. Kessel, S. L. Johnson, and W. G. Ellison (2018). Gray-cheeked Thrush (*Catharus minimus*), version 2.0. In *The Birds of North America* (P. G. Rodewald, Editor). Cornell Lab of Ornithology, Ithaca, NY, USA. <https://doi.org/10.2173/bna.gycthr.02>
- White, T. A., S. E. Perkins, G. Heckel, and J. B. Searle (2013). Adaptive evolution during an ongoing range expansion: The invasive bank vole (*Myodes glareolus*) in Ireland. *Molecular Ecology* 22:2971–2985.
- Whittam, B. (2015). Gray-cheeked Thrush. In *Second Atlas of Breeding Birds of the Maritime Provinces* (R. L. M. Stewart, K. A. Bredin, A. R. Couturier, A. G. Horn, D. Lepage, S. Makepeace, P. D. Taylor, M.-A. Villard, and R. M. Whittam, Editors). Bird Studies Canada, Environment Canada, Natural History Society of Prince Edward Island, Nature New Brunswick, New Brunswick Department of Natural Resources, Nova Scotia Bird Society, Nova Scotia Department of Natural Resources, and Prince Edward Island Department of Agriculture and Forestry, Canada. pp. 388–389. [https://www.mba-aom.ca/pdfs/atlas\\_en\\_360-389.pdf#page=29](https://www.mba-aom.ca/pdfs/atlas_en_360-389.pdf#page=29)
- Wiens, J. J., and C. H. Graham (2005). Niche conservatism: Integrating evolution, ecology, and conservation biology. *Annual Review of Ecology, Evolution, and Systematics* 36:519–539.



- Williams, J. W., B. N. Shuman, T. Webb, P. J. Bartlein, and P. L. Leduc (2004). Late-Quaternary vegetation dynamics in North America: Scaling from taxa to biomes. *Ecological Monographs* 74:309–334.
- Winger, B. M., P. A. Hosner, G. A. Bravo, A. M. Cuervo, N. Aristizábal, L. E. Cueto, and J. M. Bates (2015). Inferring speciation history in the Andes with reduced-representation sequence data: An example in the Bay-backed Antpittas (Aves; Grallariidae; *Grallaria hypoleuca* s.l.). *Molecular Ecology* 24:6256–6277.
- Winker, K. (2010). On the origin of species through heteropatric differentiation: A review and a model of speciation in migratory animals. *Ornithological Monographs*, no. 69.
- Winker, K., and C. L. Pruett (2006). Seasonal migration, speciation, and morphological convergence in the genus *Catharus* (Turdidae). *The Auk* 123:1052–1068.
- Zink, R. M. (1994). The geography of mitochondrial DNA variation, population structure, hybridization, and species limits in the Fox Sparrow (*Passerella iliaca*). *Evolution* 48:96–111.