

## **The Forests of the Amazon and Cerrado Moderate Regional Climate and Are the Key to the Future**

Authors: Coe, Michael T., Brando, Paulo M., Deegan, Linda A., Macedo, Marcia N., Neill, Christopher, et al.

Source: Tropical Conservation Science, 10(1)

Published By: SAGE Publishing

URL: <https://doi.org/10.1177/1940082917720671>

---

BioOne Complete ([complete.BioOne.org](https://complete.BioOne.org)) is a full-text database of 200 subscribed and open-access titles in the biological, ecological, and environmental sciences published by nonprofit societies, associations, museums, institutions, and presses.

Your use of this PDF, the BioOne Complete website, and all posted and associated content indicates your acceptance of BioOne's Terms of Use, available at [www.bioone.org/terms-of-use](https://www.bioone.org/terms-of-use).

Usage of BioOne Complete content is strictly limited to personal, educational, and non - commercial use. Commercial inquiries or rights and permissions requests should be directed to the individual publisher as copyright holder.

---

BioOne sees sustainable scholarly publishing as an inherently collaborative enterprise connecting authors, nonprofit publishers, academic institutions, research libraries, and research funders in the common goal of maximizing access to critical research.

# The Forests of the Amazon and Cerrado Moderate Regional Climate and Are the Key to the Future

Tropical Conservation Science  
Volume 10: 1–6  
© The Author(s) 2017  
Reprints and permissions:  
sagepub.com/journalsPermissions.nav  
DOI: 10.1177/1940082917720671  
journals.sagepub.com/home/trc



Michael T. Coe<sup>1</sup>, Paulo M. Brando<sup>1,2</sup>, Linda A. Deegan<sup>1</sup>, Marcia N. Macedo<sup>1</sup>, Christopher Neill<sup>1</sup>, and Divino V. Silvério<sup>2</sup>

## Abstract

The role of tropical forests in climate is most often expressed in terms of the carbon they keep out of the atmosphere if deforestation is avoided or the carbon they remove from the atmosphere as they grow. The direct role of forests, particularly in the tropics, in maintaining low surface temperatures and relatively high precipitation has been underappreciated. Recent studies in the Brazilian agricultural frontier indicate that tropical deforestation, for pasture and crop production, has led to significant regional climate change in the last 40 years of a scale much larger than that attributed to the carbon released from deforestation. Deforestation reduces net surface radiation and evapotranspiration, thus increasing sensible heat flux and land surface temperature. In Mato Grosso state, the temperature of the forested Xingu Indigenous Park is 3°C cooler than the surrounding mosaic of pasturelands, croplands, and remaining forest fragments. In the neighboring state of Rondônia, rainfall has significantly decreased and the dry season lengthened as deforestation occurred. Numerical model studies strongly suggest that Brazil's agricultural frontier will be much warmer and dryer in coming decades as greenhouse gas concentrations increase. Thus, in Brazil, it is becoming clear that, because of their capacity to moderate regional climate, preserving tropical forests will be a key component of mitigating exogenously driven future climate change.

## Keywords

forests, future, climate, Cerrado, Amazon

Since the mid-1970s, Brazil's Amazon–Cerrado agricultural frontier (Figure 1) has been the planet's largest and most important zone of deforestation, agricultural expansion, and agricultural intensification. Through policy, applied research, and infrastructure development, Brazil has transformed itself from a food importer to one of the world's agricultural powerhouses. Currently, Brazil is second in beef and soy production, third in corn production, and is the top producer in many other commodities such as coffee and sugar cane (Ministry of Agriculture, Brazil [MAPA], 2016; U.S. Department of Agriculture, 2016).

As a result of this agricultural transformation, by 2008, more than 750,000 km<sup>2</sup> of the Brazilian Amazon and 825,000 km<sup>2</sup> of the Cerrado had been deforested (Ministry of the Environment, Brazil [MMA], 2015; Noojipady et al., 2017; Ometto, Aguiar, & Martinelli, 2011). In response, Brazil made specific efforts to combat deforestation through greater enforcement of existing environmental laws, expansion of the protected

area system, and industry-led initiatives to combat deforestation (e.g., the soy and beef moratoriums). Together, these efforts greatly reduced Amazon deforestation rates in the mid- and late-2000s, while soy and corn production increased (Gibbs, Munger, et al., 2015; Gibbs, Rausch, 2015; Macedo, 2012; Nepstad et al., 2014). This apparent success was achieved in part by shifting cropland expansion onto already cleared pastures in lieu of clearing new forest areas (DeFries, Herold, Verchot, Macedo, & Shimabukuro, 2013; Macedo, 2012; Macedo & Castello, 2015). It was also connected to intensification of cropping by adoption of soy–corn double-cropping systems. As an

<sup>1</sup>Woods Hole Research Center, Falmouth, MA, USA

<sup>2</sup>Instituto de Pesquisa Ambiental da Amazônia, Belém, Pará, Brazil

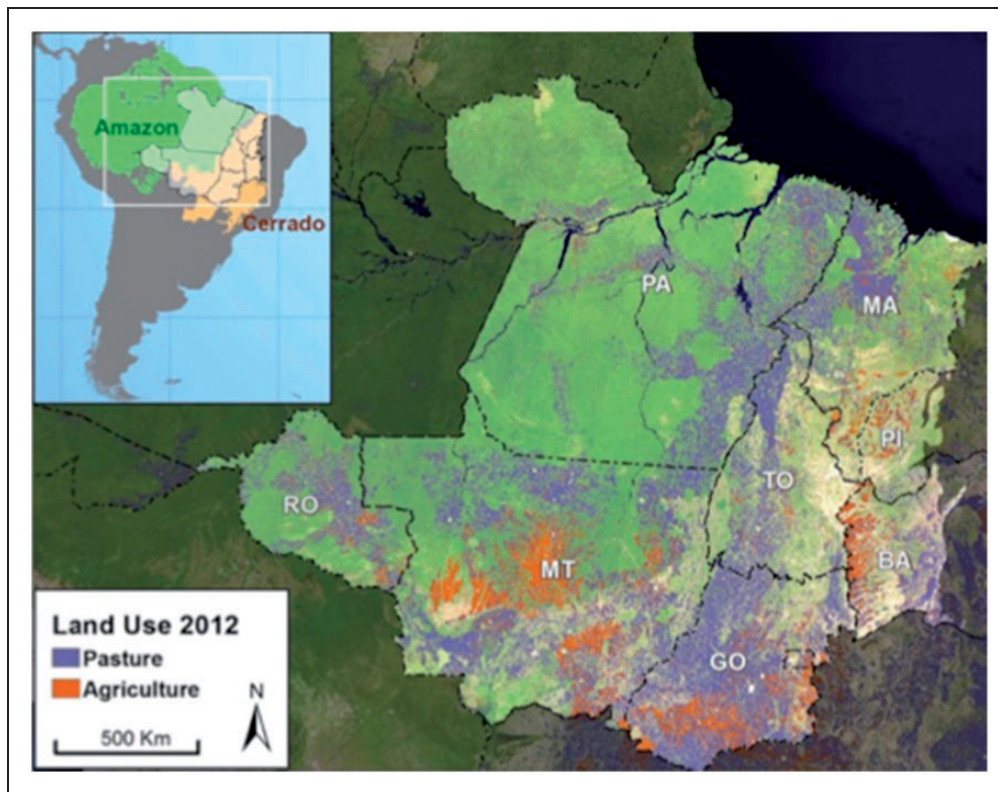
Received 7 June 2017; Accepted 7 June 2017

## Corresponding Author:

Michael T. Coe, Woods Hole Research Center, Falmouth, MA 02540, USA.  
Email: mtcoe@whrc.org



Creative Commons Non Commercial CC BY-NC: This article is distributed under the terms of the Creative Commons Attribution-NonCommercial 4.0 License (<http://www.creativecommons.org/licenses/by-nc/4.0/>) which permits non-commercial use, reproduction and distribution of the work without further permission provided the original work is attributed as specified on the SAGE and Open Access pages (<https://us.sagepub.com/en-us/nam/open-access-at-sage>).



**Figure 1.** Map of the Amazon–Cerrado agricultural frontier, with crops (red), pasture (purple), forest (green), and savanna (beige).

example, in Mato Grosso state—one of the most active frontiers of agricultural expansion in the early 2000s—double-cropping increased by a factor of 6 to include over half of all croplands by 2011 (Spera et al., 2014). Despite increased intensification and decreased deforestation rates, some deforestation continued, and by 2016, an additional 50,000 km<sup>2</sup> of the Amazon and 40,000 km<sup>2</sup> of the Cerrado had been deforested. This process has transformed much of the Amazon and Cerrado biomes into a complex mosaic of humid rainforests, drought deciduous forests and woodlands, grasses, and intensive croplands and pastures (Figure 1), with significant consequences for the regional climate.

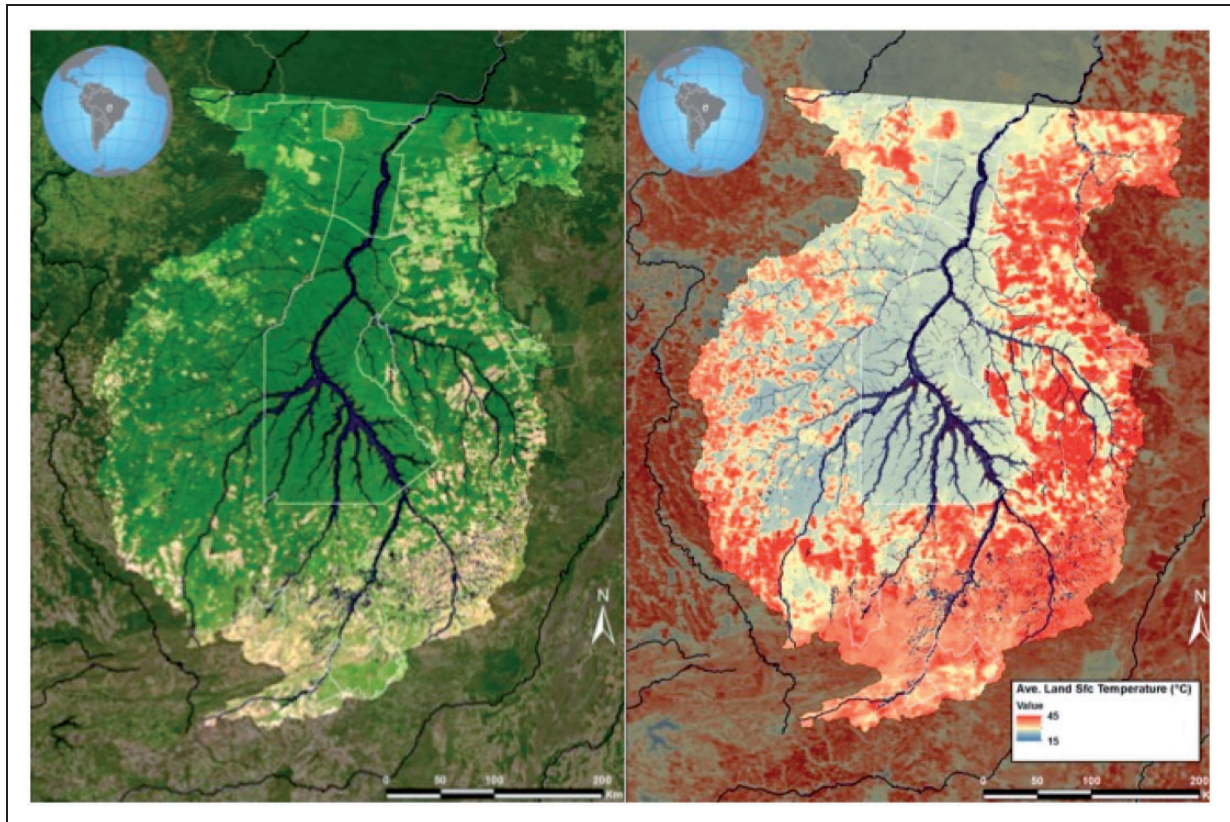
Deforestation, fragmentation, and conversion to agriculture create novel climates at local and continental scales because the new vegetation generally has shallower roots, a shorter growing season, lower water demand, and higher albedo than the natural vegetation it replaced. In Brazil, we have seen how deforestation, primarily by decreasing evapotranspiration (ET) and the surface albedo, increases regional temperature (Figures 2a and B) and may decrease precipitation.

In the process of photosynthesizing and building carbon reserves, forests and woodlands draw water from the soil and release it to the atmosphere. Over the course of a year, a healthy forest returns roughly 2/3 of the incoming precipitation and solar radiation to the atmosphere as ET (Arantes, Ferreira, & Coe, 2016;

Lathuiliere, Johnson, & Donner, 2012; Panday, Coe, Macedo, Lefebvre, & Castanho, 2015; Spera, Galford, Coe, Macedo, & Mustard, 2016). A single large tree in the Amazon returns about 500 l of water per day to the atmosphere. In total, forests return about 100 to 150 mm of water to the atmosphere each month across the entire Amazon and Cerrado. This high rate of ET occurs even during a long dry season because mature trees can access water stored deep in the soil column (Panday et al., 2015; Silvério et al., 2015).

This ET flux represents an enormous amount of energy equal to roughly 120 W/m<sup>2</sup>. Every square meter of forest removes the heat equivalent of about two 60-W bulbs burning 24 hr per day. Thus, the high ET of forests essentially acts like a very large and powerful air conditioner that maintains relatively low surface temperatures. Cohn points out in this issue that the air conditioning that forests provide positively impacts crop yields (Cohn, 2017). As a recent review by Ellison et al. (2017) has shown, these forest–climate interactions occur throughout the globe at some scale.

In the Amazon and Cerrado environments, we have seen that conversion of forests to pastures and crops decreases annual mean ET by roughly one third (Arantes et al., 2016; Lathuillière et al., 2012; Panday et al., 2015; Spera et al., 2016). Because of this change in ET, the sensible heat flux increases, the annual mean surface temperature increases by more than 5°C locally



**Figure 2.** The 176,000 km<sup>2</sup> Upper Xingu watershed in Mato Grosso, Brazil. The landscape (left image) is a mosaic of forests (green) and pasture and agriculture (beige). It also contains the Xingu Indigenous Reserve (white outline in center of watershed), which is nearly 100% forested. The annual mean surface temperature for the period 2001 to 2011 (right image) derived from MODIS data (MOD16a; Mu et al., 2011) shows that coolest conditions (light blue) correspond to the most forested regions and hottest conditions (red) are associated with deforested regions.

(Panday et al. 2015, Silvério et al., 2015), soil moisture increases by about 30%, and stream flow increases 3- to 4-fold (Dias, Macedo, Costa, Coe, & Neill, 2015; Hayhoe et al., 2011; Riskin et al., 2017; Neill et al., 2017). Thus, while at the global scale, we worry (rightfully) about keeping greenhouse gas-driven climate changes to less than 2°C, large areas of the Amazon and Cerrado have already experienced much greater changes due to deforestation alone (Figures 2a and b).

These changes have important consequences for the fragmented forest landscape and for biodiversity (Brawn, 2017). Excessive heat and dryness kills trees along forest edges and facilitates grass invasion (Silvério et al., 2013). Grasses, in turn, can fuel large, intense fires that greatly increase tree mortality (Brando et al., 2014). Damage from windstorms is also greatest near edges (Laurance & Curran, 2008). These processes systematically erode forests inward from forest–agricultural edges—and in the Amazon and Cerrado agricultural frontier, there are an ever-growing number of edges. The 176,000 km<sup>2</sup> Upper Xingu watershed alone (Figure 2) had over 92,000 km of forest edge in 2011 (Brando

et al., 2014). During a strong drought in 2010, over 10% of the forests in this watershed burned, both outside and inside protected areas (Brando et al., 2014). Although the drought set the stage for these forest fires, they would not have occurred on that scale without human-derived ignition sources and the man-made hotter and dryer climate at forest edges.

Evidence now suggests that these local changes in the energy and water balance alter wind and rain patterns in the agricultural frontier (Berbert & Costa, 2003, Butt, de Oliveira, & Costa, 2011; Knox, Bisht, Wang, & Bras, 2011), which can affect crop production and forest health over the entire region. Continued deforestation and degradation could significantly reduce annual rainfall and shorten the rainy season throughout the Amazon and Cerrado regions. Once the deforested area crosses a (still unknown) threshold, a reduction and redistribution of continental scale precipitation may occur (Berbert & Costa, 2003; Bonan, DeFries, Coe, & Ojima, 2004; Coe, Costa, & Soares-Filho, 2009; Coe et al., 2013; Costa & Pires, 2010; Costa, Yanagi, Souza, Ribeiro, & Rocha, 2007; Oliveira, Costa, Soares-Filho, & Coe, 2013; Pires

& Costa, 2013; Spracklen, Arnold, & Taylor, 2012; Spracklen & Garcia-Carreras, 2015; Stickler et al., 2013). This could significantly increase drought stress and the vulnerability of remaining Amazon forests to fire and drought (Brando et al., 2014). It may also jeopardize the productivity of, and investments in, expansion and intensification of Amazon and Cerrado rainfed cropland agriculture (Oliveira et al., 2013).

Brazil has aggressively pursued agricultural intensification in the Amazon and Cerrado biomes (Spera, 2017), which has positively impacted its productivity (Goldsmith, 2017), economy, and the well-being of its people (VanWey, Spera, de Sa, Mahr, & Mustard, 2013). At the same time, this region has become the keystone of Brazil's National Climate Change Plan, which aims to reduce carbon emissions by ending illegal deforestation, protecting the carbon contained in remaining Amazon forests and Cerrado woodlands, and restoring between 12 and 20 million ha of forestlands. What is becoming clear is that the forests themselves are a key component of the climate system and, therefore, of the goals that Brazil is attempting to achieve. The success or failure of the simultaneous push for greater agricultural production, and reduced forest carbon emissions will depend strongly on preserving remaining forests or even reforesting cleared areas.

Finally, accelerating greenhouse gas-driven climate changes are expected to result in a warmer and dryer climate for much of the Amazon and Cerrado agricultural frontier (Duffy, Brando, Asner, & Field, 2015). Significantly reducing large-scale deforestation and forest degradation has been very difficult to achieve and maintain over the long term but given the moderating affect of forests on climate, this is precisely what must occur in order to avoid potentially catastrophic climate change in this region. Thus, over the next decades, the pathways chosen by Brazil to pursue their often-competing development and carbon emissions objectives will determine whether the region's forests continue to sustain regional climate and rainfall or whether the climate crosses a tipping point that forces a shift in Brazil's conservation, agriculture, and development strategies.

### Declaration of Conflicting Interests

The author(s) declared no potential conflicts of interest with respect to the research, authorship, and/or publication of this article.

### Funding

The author(s) disclosed receipt of the following financial support for the research, authorship, and/or publication of this article: The results and conclusions described here are derived from work supported by the National Aeronautics and Space Administration, the National Science Foundation, the Gordon and Betty Moore Foundation and the Brazilian National Council for Scientific and Technological Development.

### References

- Arantes, A. E., Ferreira, L. G., & Coe, M. T. (2016). The seasonal carbon and water balances of the Cerrado environment of Brazil: Past, present, and future influences of land cover and land use. *Journal of Photogrammetry and Remote Sensing*, 117, 66–78. doi:10.1016/j.isprsjprs.2016.02.008.
- Berbert, M. L. C., & Costa, M. H. (2003). Climate change after tropical deforestation: Seasonal variability of surface albedo and its effects on precipitation change. *Journal of Climate*, 16, 2099–2104.
- Bonan, G., DeFries, R., Coe, M., & Ojima, D. (2004). Land use and climate. In: G. Gutman (ed.) *Land change science* (pp. 301–314). Netherlands: Kluwer Academic Publishers.
- Brando, P. M., Balch, J. K., Nepstad, D. C., Morton, D. C., Putz, F. E., Coe, M. T., ... Soares-Filho, B. S. (2014). Abrupt increases in Amazonian tree mortality due to drought-fire interactions. *Proceedings of the National Academy of Sciences of the United States*, 111, 6347–6352.
- Brawn, J. D. (2017). Implications of agricultural development for tropical biodiversity. *Journal of Tropical Conservation Science*, 10(1). DOI: 10.1177/1940082917720668.
- Butt, N., de Oliveira, P. A., & Costa, M. H. (2011). Evidence that deforestation affects the onset of the rainy season in Rondonia, Brazil. *Journal of Geophysical Research-Atmospheres*, 116, D11120.
- Coe, M. T., Costa, M. H., & Soares-Filho, B. S. (2009). The influence of historical and potential future deforestation on the stream flow of the Amazon River—Land surface processes and atmospheric feedbacks. *Journal of Hydrology*, 369, 165–174.
- Coe, M. T., Marthews, T. R., Costa, M. H., Galbraith, D. R., Greenglass, N. L., Imbuzeiro, H. M., ... Wang, J. (2013). Deforestation and climate feedbacks threaten the ecological integrity of south-southeastern Amazonia. *Philosophical Transactions of the Royal Society B: Biological Sciences*, 368, 20120155.
- Cohn, A. S. (2017). Leveraging climate regulation by ecosystems for agriculture to promote ecosystem stewardship. *Journal of Tropical Conservation Science*, 10(1). DOI: 10.1177/1940082917720672.
- Costa, M. H., & Pires, G. F. (2010). Effects of Amazon and Central Brazil deforestation scenarios on the duration of the dry season in the arc of deforestation. *International Journal of Climatology*, 30, 1970–1979.
- Costa, M. H., Yanagi, S. N., Souza, P. J., Ribeiro, A., & Rocha, E. J. (2007). Climate change in Amazonia caused by soybean cropland expansion, as compared to caused by pastureland expansion. *Geophysical Research Letters*, 34, 1–4.
- DeFries, R., Herold, M., Verchot, L., Macedo, M. N., & Shimabukuro, Y. (2013). Export-oriented deforestation in Mato Grosso: Harbinger or exception for other tropical forests? *Philosophical Transactions of the Royal Society B: Biological Sciences*, 368, 20120173.
- Dias, L. C. P., Macedo, M. N., Costa, M. H., Coe, M. T., & Neill, C. (2015). Effects of land cover change on evapotranspiration and streamflow of small catchments in the Upper Xingu River Basin, Central Brazil. *Journal of Hydrology: Regional Studies*, 4, 108–122.

- Duffy, P. B., Brando, P., Asner, G. P., & Field, C. B. (2015). Projections of future meteorological drought and wet periods in the Amazon. *Proceedings of the National Academy of Sciences*, 112, 13172–13177.
- Ellison, D., Morris, C. E., Locatelli, B., Sheil, D., Cohen, J., Murdiyarso, D., ... Pokorny, J. (2017). Trees, forests and water: Cool insights for a hot world. *Global Environmental Change*, 43, 51–61.
- Gibbs, H. K., Munger, J., L'Roe, J., Barreto, P., Pereira, R., Christie, M., ... Walker, N. F. (2015). Did Ranchers and Slaughterhouses Respond to Zero-Deforestation Agreements in the Brazilian Amazon? *Conservation Letters*:1–10.
- Gibbs, H. K., Rausch, L., Munger, J., Schelly, I., Morton, D. C., Noojipady, P., ... Walker, N. F. (2015). Brazil's soy moratorium. *Science*, 347, 377–378.
- Goldsmith, P. (2017). The Faustian Bargain of Tropical Soybean Production. *Journal of Tropical Conservation Science*. DOI: 10.1177/1940082917723892.
- Hayhoe, S. J., Neill, C., Porder, S., McHorney, R., Lefebvre, P., Coe, M. T., ... Krusche, A. V. (2011). Conversion to soy on the Amazonian agricultural frontier increases streamflow without affecting stormflow dynamics. *Global Change Biology*, 17, 1821–1833.
- Knox, R., Bisht, G., Wang, J. F., & Bras, R. (2011). Precipitation variability over the forest-to-nonforest transition in Southwestern Amazonia. *Journal of Climate*, 24, 2368–2377.
- Lathuiliere, M. J., Johnson, M. S., & Donner, S. D. (2012). Water use by terrestrial ecosystems: Temporal variability in rainforest and agricultural contributions to evapotranspiration in Mato Grosso, Brazil. *Environmental Research Letters*, 7, 024024. doi:024010.021088/021748-029326/024027/024022/024024
- Laurance, W. F., & Curran, T. J. (2008). Impacts of wind disturbance on fragmented tropical forests: A review and synthesis. *Austral Ecology*, 33, 399–408.
- Macedo, M. (2012). *Seeing the forest for the streams: A multi-scale study of land-use change and stream ecosystems in the Amazon's agricultural frontier* (Doctoral dissertation). New York, NY: Columbia University.
- Macedo, M. N., & Castello, L. (2015). *State of the Amazon: Freshwater connectivity and ecosystem health*. Brasília, Brazil: WWF Living Amazon Initiative.
- Ministry of Agriculture, Brazil. (2016). *AGROSTAT: Statistics on Brazilian agribusiness and foreign commerce*. Brazilian Ministry of Agriculture, Livestock, and Food Supply. Retrieved from <http://sistemasweb.agricultura.gov.br/pages/AGROSTAT.html>
- Ministry of the Environment, Brazil. (2015). *Mapeamento do uso e cobertura vegetal do Cerrado (TerraClass)*. Ibama, Embrapa, INPE, UFG, UFU. Retrieved from <http://www.dpi.inpe.br/tccer-rado/index.php?mais=1>
- Mu, Q. Z., Zhao, M. S., & Running, S. W. (2011). Improvements to a MODIS global terrestrial evapotranspiration algorithm. *Remote Sensing of Environment*, 115, 1781–1800.
- Neill, C., Jankowski, J., Brando, P. M., Coe, M. T., Deegan, L. A., Macedo, M. N., ... Krusche, A. V. (2017). Surprisingly modest water quality impacts from expansion and intensification of large-scale commercial agriculture in the Brazilian Amazon-Cerrado region. *Journal of Tropical Conservation Science*, 10(1). DOI: 10.1177/1940082917720669.
- Nepstad, D., McGrath, D., Stickler, C., Alencar, A., Azevedo, A., Swette, B., ... Hess, L. (2014). Slowing Amazon deforestation through public policy and interventions in beef and soy supply chains. *Science*, 344, 1118–1123.
- Noojipady, P., Morton, C. D., Macedo, M. N., Victoria, C. D., Huang, C., Gibbs, K. H., & Bolfe, L. E. (2017). Forest carbon emissions from cropland expansion in the Brazilian Cerrado biome. *Environmental Research Letters*, 12, 025004.
- Oliveira, L. J. C., Costa, M. H., Soares-Filho, B. S., & Coe, M. T. (2013). Large-scale expansion of agriculture in Amazonia may be a no-win scenario. *Environmental Research Letters*, 8, 024021.
- Ometto, J. P., Aguiar, A. P. D., & Martinelli, L. A. (2011). Amazon deforestation in Brazil: Effects, drivers and challenges. *Carbon Management*, 2, 575–585.
- Panday, P. K., Coe, M. T., Macedo, M. N., Lefebvre, P., & Castanho, A. D. d. A. (2015). Deforestation offsets water balance changes due to climate variability in the Xingu River in eastern Amazonia. *Journal of Hydrology*, 523, 822–829.
- Pires, G. F., & Costa, M. H. (2013). Deforestation causes different subregional effects on the Amazon bioclimatic equilibrium. *Geophysical Research Letters*, 40, 3618–3623.
- Riskin, S. H., Neill, C., Jankowski, K., Krusche, A. V., McHorney, R., Elsenbeer, H., ... Porder, S. (2017). Solute and sediment export from Amazon forest and soybean headwater streams. *Ecological Applications*, 27, 193–207.
- Silvério, D. V., Brando, P. M., Balch, J. K., Putz, F. E., Nepstad, D. C., Oliveira-Santos, C., & Bustamante, M. (2013). Testing the Amazon savannization hypothesis: Fire effects on invasion of a neotropical forest by native cerrado and exotic pasture grasses. *Philosophical Transactions of the Royal Society B: Biological Sciences*, 368, 20120427.
- Silvério, D. V., Brando, P. M., Macedo, M. N., Beck, P. S. A., Bustamante, M., & Coe, M. T. (2015). Agricultural expansion dominates climate changes in southeastern Amazonia: The overlooked non-GHG forcing. *Environmental Research Letters*, 10, 1–8.
- Spera, S. A., Cohn, A. S., VanWey, L. K., Mustard, J. F., Rudorff, B. F., Risso, J., & Adami, M. (2014). Recent cropping frequency, expansion, and abandonment in Mato Grosso, Brazil had selective land characteristics. *Environmental Research Letters*, 9, 064010.
- Spera, S. A., Galford, G. L., Coe, M. T., Macedo, M. N., & Mustard, J. F. (2016). Land-use change affects water recycling in Brazil's last agricultural frontier. *Global Change Biology*. doi:10.1111/gcb.13298
- Spera, S. (2017). Agricultural Intensification can preserve the Brazilian Cerrado: Applying Lessons from Mato Grosso and Goiás to Brazil's Last Agricultural Frontier. *Journal of Tropical Conservation Science*, 10(1). DOI: 10.1177/1940082917720662.
- Spracklen, D. V., Arnold, S. R., & Taylor, C. M. (2012). Observations of increased tropical rainfall preceded by air passage over forests. *Nature*, 489, 282–U127.
- Spracklen, D. V., & Garcia-Carreras, L. (2015). The impact of Amazonian deforestation on Amazon basin rainfall. *Geophysical Research Letters*, 42, 9546–9552.
- Stickler, C. M., Coe, M. T., Costa, M. H., Nepstad, D. C., McGrath, D. G., Dias, L. C. P., ... Soares-Filho, B. S. (2013). Dependence of hydropower energy generation on forests in the Amazon

- Basin at local and regional scales. *Proceedings of the National Academy of Sciences*, 110, 9601–9606.
- U.S. Department of Agriculture. (2016). *Economic research service crop reports*. Author. Retrieved from <https://www.ers.usda.gov/topics/crops/>
- VanWey, L. K., Spera, S., de Sa, R., Mahr, D., & Mustard, J. F. (2013). Socioeconomic development and agricultural intensification in Mato Grosso. *Philosophical Transactions of the Royal Society B: Biological Sciences*, 368, 20120168.