



## **Faberia pinnatifida (Asteraceae; Cichorieae), a New Species from Sichuan, China**

Authors: Liu, Ying, Chen, Yousheng, and Boufford, David E.

Source: Systematic Botany, 43(1) : 316-324

Published By: The American Society of Plant Taxonomists

URL: <https://doi.org/10.1600/036364418X697049>

---

BioOne Complete ([complete.BioOne.org](https://complete.BioOne.org)) is a full-text database of 200 subscribed and open-access titles in the biological, ecological, and environmental sciences published by nonprofit societies, associations, museums, institutions, and presses.

Your use of this PDF, the BioOne Complete website, and all posted and associated content indicates your acceptance of BioOne's Terms of Use, available at [www.bioone.org/terms-of-use](https://www.bioone.org/terms-of-use).

Usage of BioOne Complete content is strictly limited to personal, educational, and non - commercial use. Commercial inquiries or rights and permissions requests should be directed to the individual publisher as copyright holder.

---

BioOne sees sustainable scholarly publishing as an inherently collaborative enterprise connecting authors, nonprofit publishers, academic institutions, research libraries, and research funders in the common goal of maximizing access to critical research.

## *Faberia pinnatifida* (Asteraceae; Cichorieae), a New Species from Sichuan, China

Ying Liu,<sup>1</sup> Yousheng Chen,<sup>2</sup> and David E. Boufford<sup>3,4</sup>

<sup>1</sup>State Key Laboratory of Biocontrol and Guangdong Key Laboratory of Plant Resources, School of Life Sciences, Sun Yat-sen University, Xingangxi Road 135, Haizhu District, Guangzhou 510275, China

<sup>2</sup>The National Herbarium, Institute of Botany, Chinese Academy of Sciences, Nanxincun 20, Xiangshan, Beijing 100093, China

<sup>3</sup>Harvard University Herbaria, 22 Divinity Avenue, Cambridge, Massachusetts 02138, U. S. A.

<sup>4</sup>Author for correspondence (david\_boufford@harvard.edu)

Communicating Editor: Sasa Stefanovic

**Abstract**—*Faberia pinnatifida* (Asteraceae; Cichorieae), a species occurring at high altitudes in Muli and Yanyuan Xian, Sichuan, China, is described as new based on morphological, palynological, and molecular phylogenetic data. The ITS data indicate that *F. pinnatifida* is closely related to *F. glaucescens* and *F. thibetica*, but it is easily distinguished from *F. glaucescens* by its scapigerous stem with only one or two leaves, and from *F. thibetica* in its much taller stature and elliptic to oblanceolate leaf blade. *Faberia pinnatifida* somewhat resembles *F. ceterach* in the scapigerous stem and pinnatifid leaves, but readily differs in its corymbiform synflorescence and nodding capitula bearing ca. 30 florets.

**Keywords**—Phylogeny, taxonomy.

During field studies on Huolu Shan, Yanyuan Xian, Sichuan, in August 2010, an interesting plant was collected on scree slopes and in meadows around the summit of the mountain. One more population of the same species was discovered in August 2015 at the pass between Muli and Yanyuan in Muli Xian during a botanical expedition for the Pan Himalaya Flora project (FLPH). These plants have latex, lyrate pinnatifid to pinnatifid leaves, and nodding capitula with purplish blue ligulate florets (Fig. 1), obviously belonging to tribe Cichorieae. At first glance, the plants in question resembled members of *Dubyaea* Candolle or *Faberia* Hemsley because of the purplish blue florets and phyllaries in several series gradually longer centripetally (Fig. 1C). The phyllaries of species of *Dubyaea* usually have stiff, yellowish brown, brownish, or blackish hairs, whereas those of *Faberia* are glabrous. Our plants have glabrous phyllaries (Fig. 1C) and are thus more similar to *Faberia*.

*Faberia*, as most recently circumscribed, includes eight species in central and southwestern China (Shih and Kilian 2011; Liu et al. 2013). Karyological, palynological, and molecular phylogenetic data indicate that *Faberia* may have originated via hybridization and subsequent polyploidization between a member of Lactucinae with  $x = 9$  and a member of Crepidinae with  $x = 8$ , and is well recognized by  $x = 17$  and larger, 4-porate pollen grains (Liu et al. 2013). As recognition of natural groups within Cichorieae is rather difficult due to the lack of clear diagnostic morphological features and extensive parallel evolution (Kilian et al. 2009), we applied palynological and molecular phylogenetic data to test the generic affiliation of these plants. The pollen morphology of these and five additional species of *Faberia* were examined, and two datasets (nrITS and plastid) published in a previous study of *Faberia* were adopted to elucidate the phylogenetic relationships. Results are presented below along with the description of this new species, *F. pinnatifida*.

### MATERIALS AND METHODS

**Pollen Morphology**—Pollen morphology of five species of *Faberia* and *F. pinnatifida* was examined using scanning electron microscopy. The source of the materials is given in Table 1. Pollen removed from mature florets was directly mounted onto stubs. Samples were sputter-coated with gold and then examined with a JSM-6360LV scanning electron microscope.

**Taxon Sampling, DNA Extraction, PCR Amplification, and Sequencing**—To test the phylogenetic position of *Faberia pinnatifida*, the ITS and cpDNA (*matK*, *psbA-trnH*, *rbcL*, and *trnL-F*) datasets from a previous

phylogenetic study of *Faberia* (Liu et al. 2013) were adopted. The two datasets, exactly paralleling each other, contained 44 published accessions and the newly obtained sequences of *F. pinnatifida*, with *Hieracium umbellatum* L. chosen as outgroup. The leaves of *F. pinnatifida* were collected from Huolu Shan, Yanyuan Xian, Sichuan Province. Total DNA was extracted from silica-gel dried leaves using the modified CTAB procedure (Doyle and Doyle 1987). Nuclear ITS, plastid *matK*, *psbA-trnH*, *rbcL*, and *trnL-F* were amplified and sequenced for *F. pinnatifida* using five pairs of primers, namely ITS5 and ITS4 (White et al. 1990), 3F-KIM (CGTACAGTACTTTGTGTTTACGAG) and 1R-KIM (ACCCAGTCCATCTGGAATCTTGTTTC) (Ki-Joong Kim, unpubl. data), *psbA*(F) and *trnH*(R) (Kim et al. 1999), *rbcL*-1F and *rbcL*-724R (Fay et al. 1997), and *tab-c* and *tab-f* (Taberlet et al. 1991), following the same procedure described in Liu et al. (2013). GenBank accession numbers for all sequences used are given in Appendix 1, and the data used for phylogenetic analysis is available in Dryad (Liu et al. 2018). Voucher specimens of the new species are deposited in the Herbarium of the Arnold Arboretum (A), the Herbarium of the Kunming Institute of Botany (KUN), and the Herbarium of Sun Yat-sen University (SYS). For generic circumscription and species treatment within Cichorieae, we followed Kilian et al. (2009) and Shih and Kilian (2011).

**Phylogenetic Analysis**—As the possible hybrid origin of *Faberia* resulted in strong incongruence between nuclear and chloroplast DNA data (Liu et al. 2013), we analyzed the ITS and combined cpDNA datasets separately. Bayesian inference (BI), maximum parsimony (MP), and maximum likelihood (ML) methods for phylogenetic estimation were conducted using MrBayes v. 3.1.2 (Huelsenbeck and Ronquist 2001), PAUP\* v. 4.0b10 (Swofford 2003), and PhyML v. 3.0 (Guindon and Gascuel 2003), respectively. Gaps were treated as missing data in a conservative approach. Datasets were analyzed in MrModeltest v. 2.2 (Nylander 2004) and jModeltest v. 0.1.1 (Guindon and Gascuel 2003; Posada 2008) to select the evolutionary models for BI and ML analyses, respectively. The GTR + G and GTR + I + G models were used for the BI analysis of ITS and cpDNA datasets, respectively. Markov Chain Monte Carlo analyses (MCMC) were performed with four simultaneous chains of 2,000,000 generations sampling one tree every 100 generations. We verified that the average deviation of split frequencies had reached a value below 0.01. Trees that preceded the stabilization of the same likelihood value found in all four chains (the burn-in) were discarded, and the remaining trees were used to construct a 50% majority-rule consensus tree with Bayesian posterior probabilities. For maximum parsimony analyses, heuristic searches were performed using 1000 random additions of taxa, the BEST trees option, and tree-bisection-reconnection (TBR) branch swapping algorithm, with MaxTrees set to 100. The trees were evaluated by bootstrap analysis with 500 replicates of 1000 random additions. For maximum likelihood analyses, the models selected for the ITS data set were SYM + I + G (AIC) and SYM + G (BIC), those selected for the cpDNA dataset were GTR + I + G (AIC) and TPM1uf + I + G (BIC). Models chosen by the two criteria were used separately for both datasets. The BEST tree topology search option was selected, with five random starting trees. Non-parametric bootstrap values were computed with 100 replicates to evaluate the trees.

### RESULTS

**Pollen Morphology**—As shown in Fig. 2, the pollen grains of *Faberia cavaleriei* H.Lév., *F. faberi* (Hemsl.) N.



FIG. 1. *Faberia pinnatifida*. A. Habit. B. Top view of capitulum. C. Lateral view of capitulum showing phyllaries. D. Achene, scale bar = 5 mm. All from Sichuan, Muli Xian, Muli-Yanyuan Pass (voucher FLPH Sichuan Expedition 151148, PE).

Kilian, Z.H.Wang & J.W.Zhang, *F. nanchuanensis* C. Shih, *F. sinensis* Hemsl., *F. thibetica* (Franch.) Beauverd, and *F. pinnatifida* were all spherical, echinolophate, and 4-porate with four poral, eight abporal, and eight paraporal lacunae.

**Phylogenetic Analysis**—The aligned matrix contained 605 characters in the ITS dataset and 2963 in the combined cpDNA dataset. Trees generated by the Bayesian, maximum parsimony, and maximum likelihood analyses of the same dataset had almost identical overall topologies. Only the 50%

TABLE 1. Source of materials studied.

Taxon	Locality	Voucher	Figure
<i>Faberia cavaleriei</i>	Suiyang, Guizhou	Tao Deng 090715001 (IBSC, KUN)	1A, B
<i>F. faberi</i>	Qiaojia, Yunnan	Chen Ren & Long-yuan Wang 378 (IBSC)	1C, D
<i>F. nanchuanensis</i>	Nanchuan, Chongqing	Tao Deng 090624001 (IBSC, KUN)	1E, F
<i>F. sinensis</i>	Emei, Sichuan	Ying Liu 2010094 (IBSC)	1G, H
<i>F. thibetica</i>	Kangding, Sichuan	Ying Liu 2010089 (IBSC)	1I, J
<i>F. pinnatifida</i>	Yanyuan, Sichuan	D. E. Boufford et al. 42863 (A, KUN, SYS)	1K, L

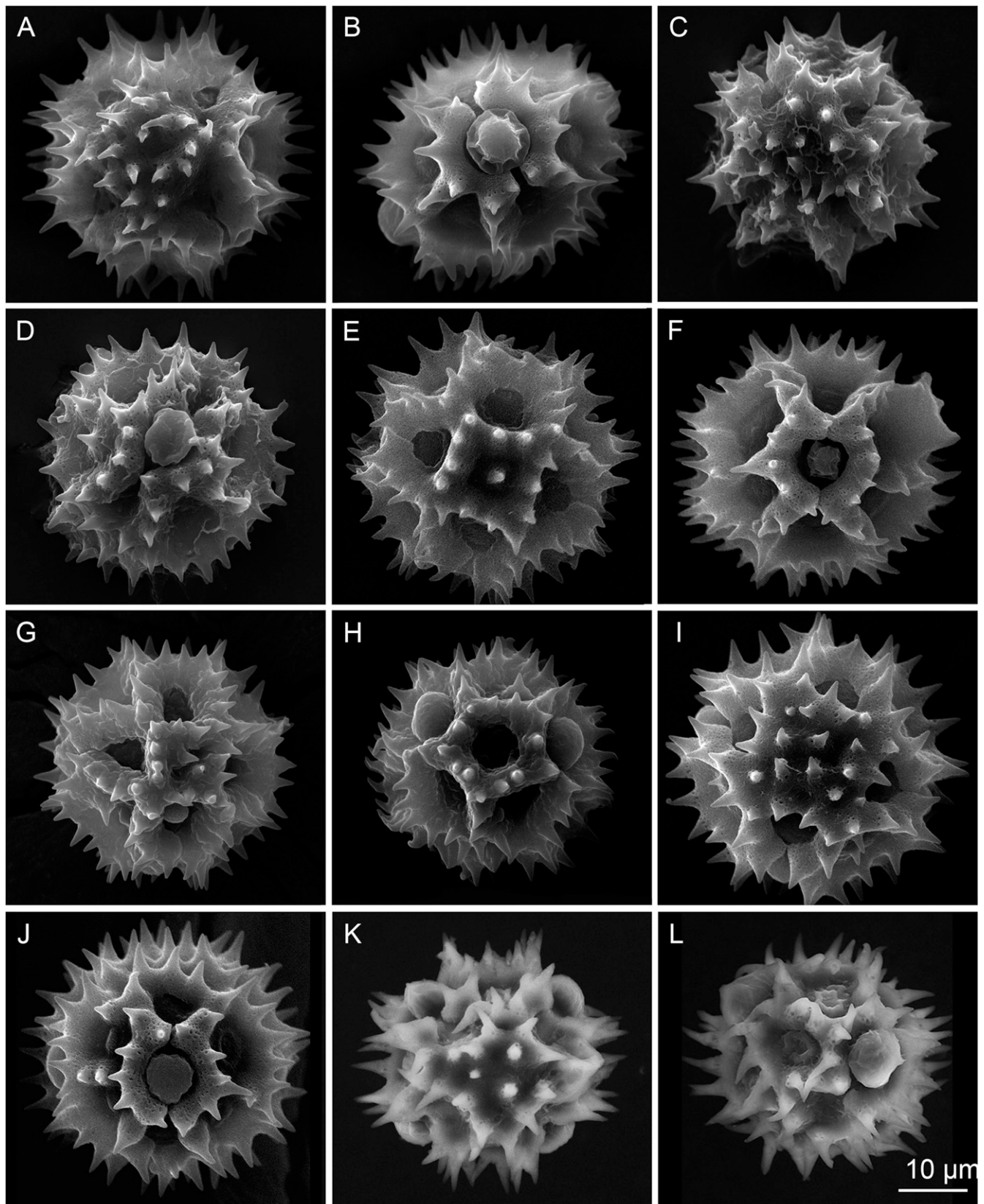
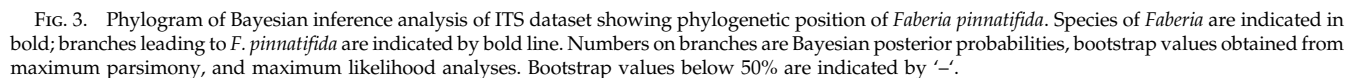


FIG. 2. Scanning electron micrographs of pollen grains of *Faberia*; polar view and equatorial view. A–B. *F. cavaleriei*. C–D. *F. faberi*. E–F. *F. nanchuanensis*. G–H. *F. sinensis*. I–J. *F. thibetica*. K–L. *F. pinnatifida*. Scale bar = 10  $\mu\text{m}$ .



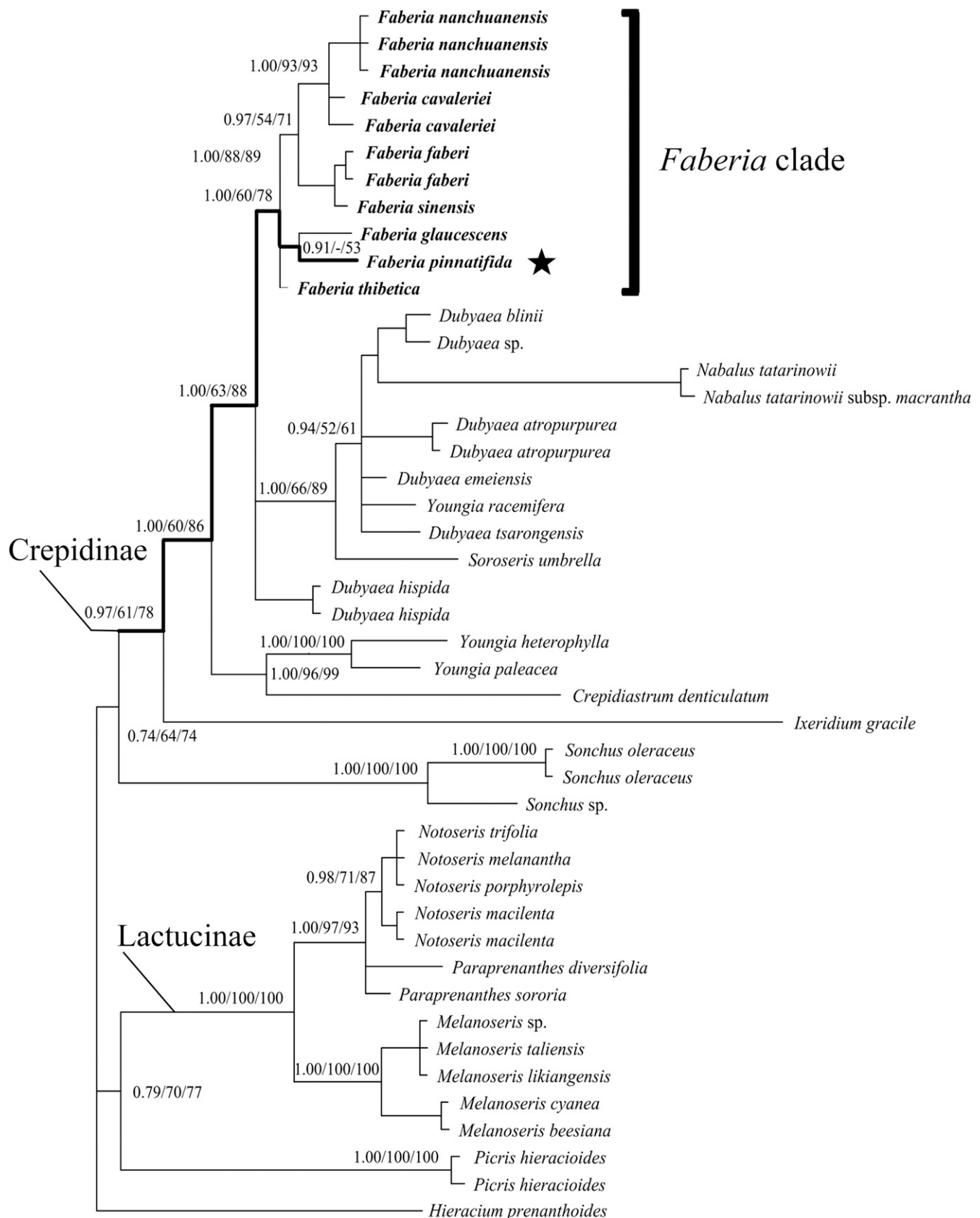


FIG. 4. Phylogram of Bayesian inference analysis of cpDNA dataset showing phylogenetic position of *Faberia pinnatifida*. Species of *Faberi* are indicated in bold; branches leading to *F. pinnatifida* are indicated by bold line. Numbers on branches are Bayesian posterior probabilities, bootstrap values obtained from maximum parsimony, and maximum likelihood analyses. Bootstrap values below 50% are indicated by '-'.



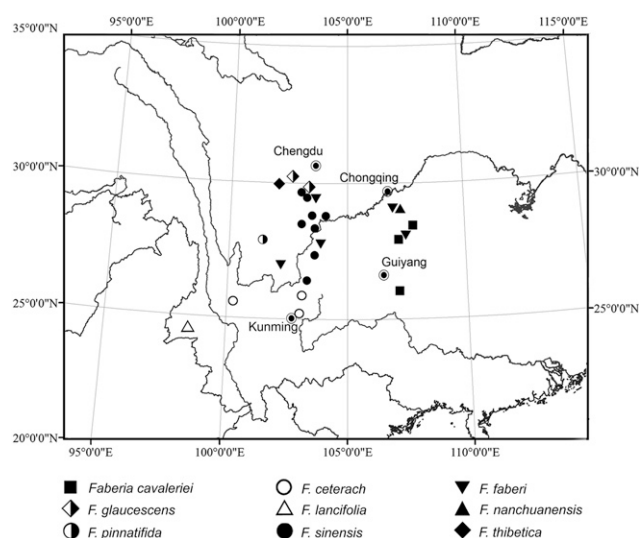


FIG. 5. Distribution of species of *Faberia*.

majority-rule consensus trees obtained from BI analysis are shown here, with Bayesian posterior probabilities and bootstrap values obtained from MP and ML analyses indicated on the branches (Figs. 3–4). The phylogenies derived from the ITS and chloroplast datasets were identical with that of Liu et al. (2013), showing both congruence and incongruence between datasets. Although the subtribal affiliation of *Faberia* was strikingly different as indicated by nuclear (subtribe Lactucinae) and plastid data (subtribe Crepidinae), the *Faberia* clade as a whole was well recognized, with strong support by ITS data (PP = 1.0, BS MP = 99%, BS ML = 100%), and strong to moderate support by chloroplast data (PP = 1.0, BS MP = 60%, BS ML = 78%). *Faberia pinnatifida* nested firmly in the *Faberia* clade together with six additional species of *Faberia* in both trees (Figs. 3–4). In the ITS phylogenetic trees, *F. pinnatifida* formed a well-supported subclade with *F. thibetica* and *F. glaucescens* (Stebbins) Ying Liu, Y.S.Chen & Q.E.Yang (PP = 1.0, BS = 93% and 97%) (Fig. 3), whereas in the plastid phylogenetic trees it clustered with *F. glaucescens*, but with only weak support (PP = 0.91, BS < 50% and 53%) (Fig. 4).

#### DISCUSSION

Both phylogenetic analyses and pollen morphology strongly supported the generic affiliation of *Faberia pinnatifida* within *Faberia*. Our phylogenetic analyses revealed that *F. pinnatifida* constantly grouped within the *Faberia* clade in both ITS (Fig. 3) and plastid (Fig. 4) phylogenetic trees, indicating that it should be treated as a member of *Faberia*. Observation of pollen morphology also showed that the pollen grains of *F. pinnatifida* were spherical, echinolophate, and 4-porate (Fig. 2K–L). These pollen features have been found to be shared by all species of *Faberia* so far examined, including *F. cavaleriei*, *F. faberi*, *F. nanchuanensis*, *F. sinensis*, *F. thibetica* (Fig. 2), and also *F. glaucescens* (Stebbins 1940). Stebbins (1940) pointed out that all species of Cichorieae with 4-porate pollen grains and known chromosome numbers were polyploids. Therefore, *F. pinnatifida* may also be a polyploid although we failed to determine its chromosome number because of the difficulty in collecting living material.

*Faberia pinnatifida* also resembles *Faberia* in gross morphology and geographic distribution. Since the transfer of the morphologically distinctive *Prenanthes faberi* Hemsl. to *Faberia* as *F. faberi* (Shih and Kilian 2011), *Faberia* was re-circumscribed

as being more diverse in gross morphology. Nevertheless, most species of *Faberia* are scapigerous or subscapigerous herbs with somewhat leathery leaves, a corymbiform or paniculiform synflorescence, narrowly cylindrical to campanulate involucre, several series of glabrous phyllaries becoming gradually longer toward the apex of the involucre, reddish or bluish purple florets, achenes narrowly ellipsoid with a truncate apex, and brownish pappi. *Faberia pinnatifida* resembles most species in its corymbiform synflorescence, narrowly campanulate involucre, glabrous phyllaries in several series gradually longer centripetally, bluish purple florets, narrowly ellipsoid achenes, and brownish pappi (Fig. 1). Geographically, it is narrowly endemic in Muli and Yanyuan Xian, Sichuan, China, within the range of *Faberia* as a whole (Fig. 5).

The ITS data suggest a closest relationship among *Faberia pinnatifida*, *F. glaucescens*, and *F. thibetica*, while plastid data place *F. pinnatifida* somewhat near *F. glaucescens*. In total, we detected 27 to 29 substitutions and two indels between *F. pinnatifida* and *F. glaucescens*, and 21 substitutions and three indels between *F. pinnatifida* and *F. thibetica*, showing *F. pinnatifida* to be well differentiated from its potentially closest relatives. All three species occur in Sichuan and resemble each other in their nodding capitula, but *F. pinnatifida* is easily distinguished from *F. glaucescens* by its scapigerous stem having only one or two leaves (vs. leafy stem), and from *F. thibetica* by its much larger stature 46–75 cm tall (vs. 15–35 cm), and its elliptic to oblanceolate (vs. triangular-ovate) leaf blade. *Faberia pinnatifida* somewhat resembles *F. ceterach*, a species endemic to Yunnan, in its scapigerous stem and pinnatifid leaves, but readily differs in its corymbiform synflorescence (vs. narrowly paniculiform) and nodding capitula (vs. not nodding) having ca. 30 florets (vs. 10–15). Therefore, both molecular data and our herbarium and field observations show that *F. pinnatifida* does not match well with any of the species of *Faberia* so far described, leading us to recognize it as a new species. The description of *F. pinnatifida* and a key to separate it from other species of *Faberia* are provided below.

#### TAXONOMIC TREATMENT

***Faberia pinnatifida*** Ying Liu, Yousheng Chen & Boufford, sp. nov. TYPE: CHINA. Sichuan: Yanyuan County, E of Wodi-xiang; around summit of Huolu Shan Peak, scree slopes, meadows, and adjacent primary *Picea* forest over limestone; 27°54'11"N, 101°37'5"E; 4300–4320 m, 13 Aug 2010, D. E. Boufford, L. Y. Chen, X. H. Li, J. R. Shevock & J. P. Yue 42863 (holotype: SYS; isotypes: A, KUN).

Herbs, perennial, 46–75 cm tall, with short rhizomes. Stems erect, glabrous, branched apically. Rosette leaves narrowly elliptic to oblanceolate; petiole 3–8 cm long, blade 6–16 × 2.5–6.7 cm, lyrate pinnatifid to pinnatipartite, base cuneate and narrowly decurrent along petiole, apex acute to acuminate, abaxially pale glaucous, adaxially green and glabrous; lateral lobes 8–14, triangular to broadly ovate, gradually smaller toward leaf base; terminal lobe triangular to lanceolate. Stem leaves usually 1 or 2, only one leaf similar to rosette leaves; upper leaf often linear and bract-like. Synflorescence laxly branched, corymbiform, with 2–7 capitula. Capitula nodding, with ca. 30 florets. Involucre ca. 15 × 6 mm. Phyllaries abaxially dark green, glabrous, apex obtuse or acute, margin and apex shortly whitish fimbriate; outer phyllaries ovate to triangular-ovate, largest 5–7 × 3–4 mm; inner phyllaries ca. 14, 13–15 × 3–4 mm. Florets

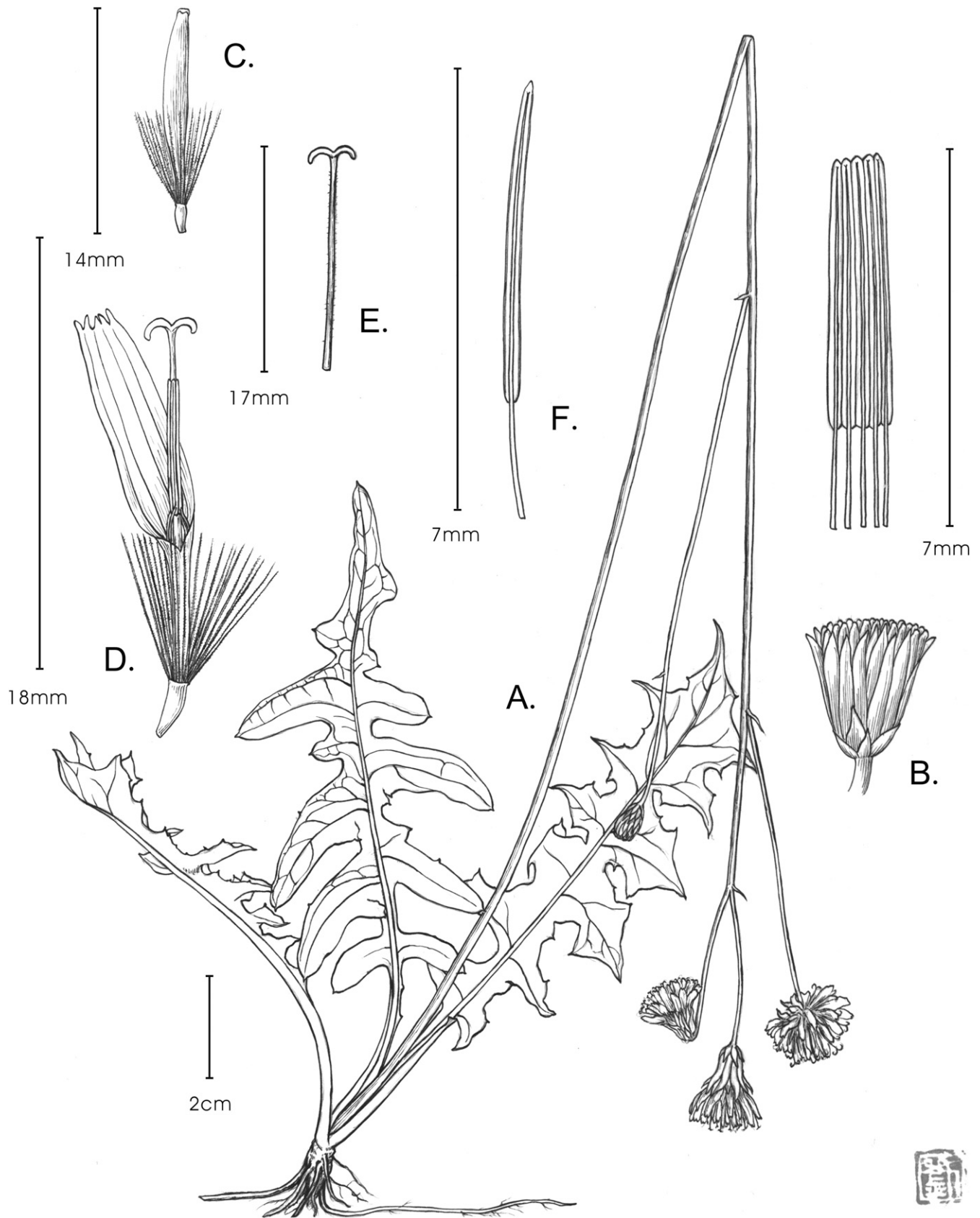


FIG. 6. *Faberia pinnatifida*. A. Habit. B. Capitulum showing phyllaries. C-D. Young and mature florets. E. Style and stigma. F. Stamen.



purplish blue. Achenes brown, narrowly ellipsoid, 4–5 mm long, apex truncate. Pappus brownish, ca. 6 mm long. Flowering August–September, fruiting September–October. Figure 6.

**Distribution and Ecology**—Known from northern Yanyuan Xian and southern Muli Xian, Sichuan, China, on scree slopes, in meadows, thickets, and primary *Picea* forests over limestone.

**Etymology**—The epithet is based on the pinnately lobed to partite leaves.

**Conservation Concerns**—*Faberia pinnatifida* is known only from a small area around northern Yanyuan and southern Muli xian. Of the two populations known, the one at the Muli-Yanyuan Pass included no more than 50 clumps. The extent of the population on Huolu Shan was not determined.

**Additional Specimen Examined**—China.—SICHUAN: Muli Xian. Xiamaidi-xiang, Muli-Yanyuan Pass, 27°44'4.13"N, 101°14'5.71"E, 3000 m, 25 Aug 2015, FLPH Sichuan Expedition 151148 (PE).

## KEY

1. Leaves lyrate-pinnatifid to lyrate-pinnatisect ..... 2.
1. Leaf blade not divided or at most coarsely sinuate-dentate ..... 3.
- 2 (1). Terminal leaf lobe much larger than lateral lobes, to 2/3 of entire leaf ..... *F. sinensis*.
- 2 (1). Terminal leaf lobe never conspicuously larger than lateral lobes ..... 4.
- 3 (1). Leaf blade lanceolate to narrowly elliptic or oblanceolate, at least ca. 3 × as long as wide ..... 5.
- 3 (1). Leaf blade broadly elliptic, ovate, or pentagonal, mostly not more than ca. 2 × as long as wide ..... 6.
- 4 (2). Synflorescence narrowly paniculiform, usually with 10–20 capitula; involucre 1.1–1.3 cm long; capitula erect, with 10–15 florets. .... *F. ceterach*.
- 4 (2). Synflorescence corymbiform, with 2–7 capitula; involucre ≥ 1.5 cm long; capitula nodding, with more than 25 florets ..... 7.
- 5 (3). Capitula many in a leafless narrowly paniculiform synflorescence ..... *F. lancifolia*.
- 5 (3). Capitula 1–3 on short branchlets subtended by upper stem leaves ..... *F. nanchuanensis*.
- 6 (3). Stem leafy; leaf petiole usually shorter than blade; leaf blade triangular-ovate to pentagonal; capitula with 5 florets; inner phyllaries ..... 5 *F. faberi*.
- 6 (3). Stem scapigerous or subscapigerous, leaf petiole distinctly longer than blade; leaf blade broadly elliptic to ovate; capitula with more than 10 florets; inner phyllaries at least 8 ..... 8.
- 7 (4). Stem leafy, leaf base attenuate to an auriculate clasp base ..... *F. glaucescens*.
- 7 (4). Stem scapigerous with only 1 or 2 leaves; leaf base cuneate to petiole-like. .... *F. pinnatifida*.
- 8 (6). Herbs 60–80 cm tall; leaf blade mostly more than 5 cm long; capitula not nodding ..... *F. cavaleriei*.
- 8 (6). Herbs 15–35 cm tall; leaf blade at most ca. 4 cm long; capitula nodding. .... *F. thibetica*.

**ACKNOWLEDGMENTS.** We thank Yun-Xiao Liu for her beautiful illustrations. We are deeply grateful to Dr. Tao Deng, Dr. Chen Ren, and Mr. Long-yuan Wang for their help during field work, and to Professor Hang Sun for his assistance in arranging the field work in Sichuan in 2010. We also thank two anonymous reviewers for their comments.

## LITERATURE CITED

- Doyle, J. J. and J. L. Doyle. 1987. A rapid DNA isolation procedure for small quantities of fresh leaf tissue. *Phytochemical Bulletin* 19: 11–15.
- Fay, M. F., S. M. Swensen, and M. W. Chase. 1997. Taxonomic affinities of *Medusagyne oppositifolia* (Medusagynaceae). *Kew Bulletin* 52: 111–120.
- Guindon, S. and O. Gascuel. 2003. A simple, fast and accurate algorithm to estimate large phylogenies by maximum likelihood. *Systematic Biology* 52: 696–704.
- Huelsenbeck, J. P. and F. R. Ronquist. 2001. MrBayes: Bayesian inference of phylogenetic trees. *Bioinformatics* 17: 754–755.
- Kilian, N., B. Gemeinholzer, and H. W. Lack. 2009. Tribe Cichorieae. Pp. 343–383 in *Systematics, evolution, and biogeography of Compositae*, eds. V. A. Funk, A. Susanna, T. F. Stuessy, and R. J. Bayer. Vienna: International Association for Plant Taxonomy, Vienna.
- Kim, S. C., D. J. Crawford, R. K. Jansen, and A. Santos-Guerra. 1999. The use of a non-coding region of chloroplast DNA in phylogenetic studies of the subtribe Sonchinae (Asteraceae: Lactuceae). *Plant Systematics and Evolution* 215: 85–99.
- Liu, Y., Y. S. Chen, and Q. E. Yang. 2013. Generic status, circumscription, and allopolyploid origin of *Faberia* (Asteraceae: Cichorieae) as revealed by ITS and chloroplast DNA sequence data. *Taxon* 62: 1235–1247.
- Liu, Y., Y. S. Chen, and D. E. Boufford. 2018. Data from: *Faberia pinnatifida* (Asteraceae: Cichorieae), a New Species from Sichuan, China. Dryad Digital Repository. doi:10.5061/dryad.6mc111c.
- Nylander, J. A. A. 2004. MrModeltest, version 2. Program distributed by the author. Evolutionary Biology Centre, Uppsala University.
- Posada, D. 2008. jModelTest: Phylogenetic model averaging. *Molecular Biology and Evolution* 25: 1253–1256.
- Shih, C. and N. Kilian. 2011. *Faberia* Hemsl. Pp. 211–214 in *Flora of China* vol. 20–21, eds. Z. Y. Wu and P. H. Raven. Beijing: Science Press and St. Louis: Missouri Botanical Garden Press.
- Stebbins, G. L. 1940. Studies in Cichorieae: *Dubyaea* and *Sorosseris*, endemics of the Sino-Himalayan region. *Memoirs of the Torrey Botanical Club* 19: 1–76.
- Swofford, D. L. 2003. PAUP\*: Phylogenetic analysis using parsimony (\*and other methods), v. 4.0 beta 10. Sunderland: Sinauer Associates.

Taberlet, P., L. Gielly, G. Pautou, and J. Bouvet. 1991. Universal primers for amplification of three non-coding regions of chloroplast DNA. *Plant Molecular Biology* 17: 1105–1109.

White, T. J., T. Bruns, S. Lee, and J. Taylor. 1990. Amplification and direct sequencing of fungal ribosomal RNA genes for phylogenetics. Pp. 315–322 in *PCR protocols: A guide to methods and applications*, eds. M. A. Innis, D. H. Gelfand, J. J. Sninsky, and T. J. White. San Diego: Academic Press.

## APPENDIX 1. Taxon, GenBank accession numbers (ITS/matK/psbA-trnH/rbcL/trnL-F)—*Crepidiastrum*, *C. denticulatum* (Houtt.) Pak & Kawano,

- KF154369, KF195984, KF196116, KF196028, KF196072; *Dubyaea*, *D. atropurpurea* Stebbins, KF154377, KF195992, KF196124, KF196036, KF196080; *D. atropurpurea*, KF154381, KF195996, KF196128, KF196040, KF196084; *D. blinii* (H. Lév.) N. Kilian, KF154374, KF195989, KF196121, KF196033, KF196077; *D. emeiensis* C. Shih, KF154376, KF195991, KF196123, KF196035, KF196079; *D. hispida* DC., KF154379, KF195994, KF196126, KF196038, KF196082; *D. hispida* DC., KF154380, KF195995, KF196127, KF196039, KF196083; *D. tsarongensis* (W.W.Sm.) Stebbins, KF154378, KF195993, KF196125, KF196037, KF196081; *Dubyaea* sp., KF154375, KF195990, KF196122, KF196034, KF196078; *Faberia*, *F. cavaleriei* H. Lév., KF154395, KF196010, KF196142, KF196054, KF196098; *F. cavaleriei*, KF154397, KF196012, KF196144, KF196056, KF196100; *F. faberi* (Hemsl.) N. Kilian, KF154396, KF196011, KF196143, KF196055, KF196099; *F. faberi*, KF154398, KF196013, KF196145, KF196057, KF196101; *F. glaucescens* Stebbins, KF154382, KF195997, KF196129, KF196041, KF196085; *F. nanchuanensis* C. Shih, KF154399, KF196014, KF196146, KF196058, KF196102; *F. nanchuanensis*, KF154401, KF196016, KF196148, KF196060, KF196104; *F. nanchuanensis*, KF154400, KF196015, KF196147, KF196059, KF196103; *F. pinnatifida*, D. E. Boufford, L. Y. Chen, X. H. Li, J. R. Shevock & J. P. Yue 42863 (A, KUN, SYS), China: Sichuan, Yanyuan, MF188171, MF170029, MF170030, MF170031, MF170032; *F. sinensis* Hemsl., KF154402, KF196017, KF196149, KF196061, KF196105; *F. thibetica* (Franch.) Beauverd, KF154403, KF196018, KF196150, KF196062, KF196106; *Hieracium*, *H. umbellatum* L., KF154360, KF195975, KF196107, KF196019, KF196063; *Ixeridium*, *I. gracile* (DC.) Pak & Kawano, KF154366, KF195981, KF196113, KF196025, KF196069; *Melanoseris*, *M. beesiana* (Diels) N. Kilian, KF154394, KF196009, KF196141, KF196053, KF196097; *M. cyanea* (D. Don) Edgew., KF154384, KF195999, KF196131, KF196043, KF196087; *M. likiangensis* (Franch.) N. Kilian & Z. H. Wang, KF154385, KF196000, KF196132, KF196044, KF196088; *M. taliensis* (C. Shih) N. Kilian & Z. H. Wang, KF154386, KF196001, KF196133, KF196045, KF196089; *Melanoseris* sp., KF154383, KF195998, KF196130, KF196042, KF196086; *Nabalus*, *Nab. tatarinowii* (Maxim.) Nakai, KF154367, KF195982, KF196114, KF196026, KF196070; *Nab. tatarinowii* subsp. *macrantha* (Stebbins) N. Kilian, KF154368, KF195983, KF196115, KF196027,

KF196071; *Notoseris*, *Not. macilenta* (Vaniot & H.Lév.) N. Kilian, KF154389, KF196004, KF196136, KF196048, KF196092; *Not. macilenta*, KF154390, KF196005, KF196137, KF196049, KF196093; *Not. melanantha* (Franch.) C. Shih, KF154391, KF196006, KF196138, KF196050, KF196094; *Not. porphyrolepis* C. Shih, KF154388, KF196003, KF196135, KF196047, KF196091; *Not. triflora* (Hemsl.) C. Shih, KF154387, KF196002, KF196134, KF196046, KF196090; *Paraprenanthes*, *Par. diversifolia* (Vaniot) N. Kilian, KF154392, KF196007, KF196139, KF196051, KF196095; *Par. sororia* (Miq.) C. Shih, KF154393, KF196008, KF196140, KF196052, KF196096; *Picris*, *Pic. hieracioides* L., KF154362, KF195977, KF196109, KF196021, KF196065;

*Pic. hieracioides*, KF154361, KF195976, KF196108, KF196020, KF196064; *Sonchus*, *Son. oleraceus* L., KF154364, KF195979, KF196111, KF196023, KF196067; *Son. oleraceus*, KF154365, KF195980, KF196112, KF196024, KF196068; *Sonchus* sp., KF154363, KF195978, KF196110, KF196022, KF196066; *Soroseris*, *Sor. umbrella* (Franch.) Stebbins, KF154370, KF195985, KF196117, KF196029, KF196073; *Youngia*, *Y. heterophylla* (Hemsl.) Bab. & Stebbins, KF154372, KF195987, KF196119, KF196031, KF196075; *Y. paleacea* (Diels) Bab. & Stebbins, KF154373, KF195988, KF196120, KF196032, KF196076; *Y. racemifera* (Hook.f.) Bab. & Stebbins, KF154371, KF195986, KF196118, KF196030, KF196074.