

**A Modified Method to Visualize Infection Sites of Spores of the Entomopathogen *Beauveria bassiana* (Deuteromycotina: Hyphomycetes) on the Exoskeleton of Citrus Root Weevil *Diaprepes abbreviatus* (Coleoptera: Curculionidae) Adults**

Authors: Gillett-Kaufman, Jennifer L., and Kimbrough, James W.

Source: Florida Entomologist, 92(4) : 623-628

Published By: Florida Entomological Society

URL: <https://doi.org/10.1653/024.092.0415>

---

BioOne Complete ([complete.BioOne.org](https://complete.BioOne.org)) is a full-text database of 200 subscribed and open-access titles in the biological, ecological, and environmental sciences published by nonprofit societies, associations, museums, institutions, and presses.

Your use of this PDF, the BioOne Complete website, and all posted and associated content indicates your acceptance of BioOne's Terms of Use, available at [www.bioone.org/terms-of-use](https://www.bioone.org/terms-of-use).

Usage of BioOne Complete content is strictly limited to personal, educational, and non - commercial use. Commercial inquiries or rights and permissions requests should be directed to the individual publisher as copyright holder.

---

BioOne sees sustainable scholarly publishing as an inherently collaborative enterprise connecting authors, nonprofit publishers, academic institutions, research libraries, and research funders in the common goal of maximizing access to critical research.

# A MODIFIED METHOD TO VISUALIZE INFECTION SITES OF SPORES OF THE ENTOMOPATHOGEN *BEAUVERIA BASSIANA* (DEUTEROMYCOTINA: HYPHOMYCETES) ON THE EXOSKELETON OF CITRUS ROOT WEEVIL *DIAPREPES ABBREVIATUS* (COLEOPTERA: CURCULIONIDAE) ADULTS

JENNIFER L. GILLETT-KAUFMAN<sup>1</sup> AND JAMES W. KIMBROUGH<sup>2</sup>

<sup>1</sup>Department of Entomology and Nematology, P.O. Box 110620, Gainesville, FL 32611-0620

<sup>2</sup>Department of Plant Pathology, P.O. Box 110680, University of Florida, Gainesville, FL 32611

## ABSTRACT

*Beauveria bassiana* is a widespread entomopathogen which is infectious to a great variety of insects. A commercial preparation of this fungus was used to study its potential as a biocontrol agent of the citrus root weevil, *Diaprepes abbreviatus*. Laboratory reared adult weevils were placed in clean plastic bags with 0.05 g of powdered inoculum per bag, shaken for thirty seconds, and placed in holding cages. In order to determine the spore concentration, germination, and position of ingress, inoculated weevils were dipped in a collodion solution after 30 min, 6 h, 12 h, 18 h, and 30 h. Collodion peels from various areas of the exoskeleton were removed, stained with lactophenol cotton blue, and observed microscopically. At 12 h post-inoculation, spores began to swell, and at 18 h close to 25% germinated on all body parts except on the elytra. After 30 h, between 45% and 75% of the spores germinated, depending on the body part. Most active spore germination occurred around the eyes (75%), followed by the ventral abdomen (65%), the dorsal pronotum (60%), scales (45%), and dorsal surface of the elytra (7%). Spores were washed from the surface of inoculated weevils with distilled water and plating onto potato dextrose agar. Spore density on the weevils' surface was determined to be  $15,815 \pm 479$  spores initially after inoculation, and was reduced to  $5,782 \pm 136$  spores after 3 h.

Key Words: biocontrol, conidia, entomopathogenic fungus, infection sites, spore germination

## RESUMEN

*Beauveria bassiana* es un entomopatógeno cosmopolita que es infeccioso para un gran variedad de insectos. Una preparación comercial de este hongo fue usada para estudiar su potencial como un agente de control biológico para el picudo de la raíz de cítricos, *Diaprepes abbreviatus*. Adultos del picudo criados en el laboratorio fueron puestos en bolsas plásticas y limpias con 0.05 g de inoculo en polvo en cada bolsa, agitado por treinta segundos, y puestos en jaulas de espera. Para determinar la concentración de esporas, germinación y la posición de su entrada, picudos inoculados fueron metidos en una solución adhesiva después de 30 minutos, 6 h (horas), 18 h y 30 h. Las cáscaras de colodio de varias áreas del exoesqueleto fueron quitadas, tintadas con el algodón azul de lactofenol, y observadas bajo el microscopio. A los 12 h después del inoculo, las esporas empezaron a hincharse, y a los 18 h aproximadamente 25% germinaron sobre todas las partes del cuerpo menos los elitros. Después de 30 h, entre 45% y 75% de las esporas germinaron, según la parte del cuerpo. La mayor parte de la germinación de las esporas sucedió alrededor de los ojos (75%), seguida por la parte ventral del abdomen (65%), el dorso de pronoto (60%), escamas (45%) y la superficie dorsal de los elitros (7%). Las esporas fueron lavadas de la superficie de los picudos inoculados con agua destilada y puestas en placas de agar de dextrosa de papa. La densidad de las esporas sobre la superficie de los picudos fue determinada como  $15,815 \pm 479$  esporas inicialmente después del inoculo, y fue reducida a  $5,782 \pm 136$  esporas después de 3 horas.

*Beauveria bassiana* (Balsamo) Vuillemin (Deuteromycotina: Hyphomycetes) is a disease-causing agent in insects (Steinhaus 1949). De Hoog (1972) has done the most definitive work on the genus *Beauveria* in which he was able to delimitate *Beauveria* from the genera *Isaria*, *Trititachium*, and *Acrodontium*. Scrutinized as a biological control agent of hypogeous insects, *B. bassiana* has been found around the world and in many

habitats (Ferron 1981). The fungus regulates populations of coleopterous insects of the genera *Diabrotica*, *Colaspis*, and *Maecolaspis* in soybeans grown in Argentina and Brazil. In Brazil, the fungus achieves high prevalence in populations of *Aracanthus*, an important pest of beans (Sosa-Gomez et al. 1994), and in France, England, and Morocco it can be found on *Sitonia* weevils, a major pest of cultivated Fabaceae (Poprawski et al. 1988).

Isolates from the United States, Canada, and China have been collected and used in immunochemical characterization to identify a quality control program to ensure virulence of a strain (Tan & Ekramoddoullah 1990). Although most *B. bassiana* isolates are morphologically indistinguishable, they vary in virulence (Safavi et al. 2007). Biochemical characterization and large-scale production of these virulent isolates are important for successful biological control (Zhang & Tan 1987). In 2003 *B. bassiana* (strain GHA) produced by the MycoTech Corporation (USA, Mycotrol ES, Emerald BioAgriculture, Butte, MT, 59702) was in commercial production as a mycoinsecticide and this product was used in all of the experiments reported herein.

The *Diaprepes* root weevil (*Diaprepes abbreviatus* L.) (Coleoptera: Curculionidae) is a pest in Florida on citrus and other crops. It was first reported in the United States in a Florida nursery (Woodruff 1964); now the weevil infests more than 50,000 ha of the 300,000 ha of citrus in production (Duncan & McCoy 2001). The weevil larvae feed on roots of trees creating an entry for fungal and other plant pathogens. It has been shown that species of *Phytophthora* can gain ingress into citrus root systems where root integrity has been compromised by weevil damage (Rogers et al. 1996; Graham et al. 1997). Graham et al. (1997) found that in some soil types *Phytophthora palmivora* caused more damage to structural roots than the weevil larvae. Current control of the *Diaprepes* root weevil relies on timed applications of chemical pesticides, but these control measures have yet to suppress weevil populations (Bullock et al. 1988). With growing concerns in the use of chemical pesticides, costs, and deleterious effects to the environment, it is important that we explore the potential of enhancing biological control.

This study was initiated to examine the propensity of a formulated strain of *B. bassiana* to germinate on the exoskeleton of adult *D. abbreviatus*. It is known that *B. bassiana* will infect adult and larval *D. abbreviatus* in nature (Futch & McCoy 1992). However, fungal modes of ingress and germination rates on different areas of adult *Diaprepes* exoskeleton have yet to be established. Humidity and temperature are necessary factors for the germination of *B. bassiana* (Thomas & Blanford 2003); however, neither humidity nor water alone is enough to stimulate germination of conidia (Hunt et al. 1984). The insect exoskeleton is known to have chemical compounds that affect the germination of *B. bassiana* (Woods & Grula 1984). A lack of nutrients on sclerotized beetle cuticle can be a limiting factor in fungal growth and development, including conidial germination (Hunt et al. 1984). Amino acids and glucosamine have been found on the larval cuticle of *Heliothis zea*. These fluctuate in levels during larval development but are always sufficient to trigger the

germination of *B. bassiana* (Woods & Grula 1984). Amines and peptides on the larval exoskeleton of *H. zea* do not inhibit the germination of *B. bassiana* (Woods & Grula 1984). Information gathered on the most vulnerable areas of the insect exoskeleton will be considered in the future production of a spore dissemination method for the use of *Beauveria* in an integrated pest management system to control adult population levels of *D. abbreviatus*.

## MATERIALS AND METHODS

### Conidial Delivery

Cages (Sho-Bowl, 64 oz. tub, ribbed dome lid, Ultra Pac, Rogers, Mn. 55374) with pin holes in the lid for ventilation were prepared that contained ~100g of dry play sand. The sand and cages were sterilized in a UV hood for 1 h. Work surfaces, including the balance used, were cleaned with a 10% Clorox® solution before and after treatment to avoid contamination of control insects.

*Diaprepes abbreviatus* were reared at the Florida Department of Agriculture facility in Gainesville, Florida, by Beavers' (1982) methods for rearing on an artificial diet. A dry commercially produced wettable powder formulation of *B. bassiana* conidia produced by the MycoTech Corporation (strain GHA, Mycotrol ES, Emerald BioAgriculture, Butte, MT, 59702) was used as an inoculum. This strain was previously used by Furlong & Groden (2003) in their study of larvae of the Colorado potato beetle, *Leptinotarsa decemlineata* (Say). Citrus root weevils were separated by gender as described by Harari & Landolt (1997) and placed in batches into clean plastic sandwich bags containing 0.05 g of powder per insect. Bags with insects and powder were shaken for 30 s. This method of conidial delivery was similar to that used by Hedlund & Pass (1968) on the alfalfa weevil. Insects were transferred to holding cages, based on gender, with 2 organically grown baby carrots and a cotton ball saturated with sterilized water. Control groups were agitated in a clean plastic bag to simulate the possibility of mechanical damage that the insects might incur during treatment. Insects were maintained in an incubator with a 14 h:10 h light:dark cycle, a relative humidity of 85-90%, and a temperature range between 22°C and 24°C.

### Modified Collodion Method

Thirty min after treatment, 5 insects of each gender were removed from the holding containers and the live insects were pinned through the right elytra with a number 2 nylon headed insect pin. Insects were dipped into a collodion solution (Collodion Flexible USP, Alcohol 22%, Ether 67%, Pyroxylin 4.75%, Camphor 2% and Castor Oil 3%, HUMCO, Texarkana, TX 75501), and allowed to stand at room temperature until the layer was so-

lidified but not hardened (approximately 45 min) (Delp 1954; Kimbrough 1963). The solidified collodion film was removed from the insect cuticle with jeweler's forceps. This process removes loose and attached conidia and some insect cuticular components. Peels were made from the ventral abdominal sterna and related inter-segmental membranes, and from the dorsal elytra to the beak including the dorsal pronotum, eyes, and antennae.

Each peel was placed with the exoskeleton contact side facing up to reduce interference from the collodion when visualizing the peel with the compound light microscope. A drop of lactophenol cotton blue stain was placed on the peels of collodion on glass slides (Shurtleff & Averre 1997). After 5 min excess stain was wicked off of the peels with absorbent tissue. The slides were sealed with a few drops of Cytoseal™ 60 (Stephens Scientific, Division of Richard-Allan Scientific, Kalamazoo, MI 49007-3538) around the edges of a 50 × 24-mm cover glass. To ensure thin slides and remove air bubbles, slides were placed on a slide warmer for 6 h at 50°C with a 15-g lead weight on the cover glass. Slides were removed from the slide warmer and allowed to cool for 6 h before the weight was removed from the cover glass. Collodion dipping and the preparation of epidermal peels were repeated every 6 h with 5 fresh insects of each gender from the treatment cohort until 30 h past the initial inoculations. Conidial density, germination rate, and growth including the formation of germ tubes and points of fungal ingress were observed and photographed with a Nikon 990 digital camera attached to a light microscope. Dorsal and ventral photographs of weevils were labeled for rapid identification of areas.

#### Conidial Viability and Weevil Contact

A simple procedure was used to determine the number of viable conidia on each treated insect. Twenty insects were treated with 0.05 g of dry commercially produced wettable powder of *B. bassiana* per insect using the previously described plastic bag procedure. The weevils were then placed in a holding container for 3 h. The weevils were then removed from the holding container and placed individually in 100-mL glass vials. One milliliter of de-ionized water was added to the vial containing the weevil. The vial was shaken vigorously for 1 min. The water from each weevil rinse was poured onto potato dextrose agar (PDA) (Difco Laboratories, Detroit, MI, 48232-7058) and the Petri dishes were sealed with Parafilm M Lab Wrapping Film and placed inverted in an incubator at room temperature for 48 h. Twenty control insects were treated with the powder and immediately washed as described above. After incubation, the plates were examined for signs of fungal growth. Colonies forming on the plates were counted on a grid system under a dissecting microscope at 40×. Data were analyzed with Excel (Microsoft Corp 1997).

#### RESULTS

Spores on the surface of the weevil were not evenly distributed at 30 min post inoculation. Total spore density on weevil surfaces could not be determined with the collodion method. It could be determined, however, by washing spores from the surface of the weevils with distilled water and plating onto PDA. Spore density on the weevils' surface was determined to be  $15,815 \pm 479$  spores initially after inoculation. Spore load on the surface of the weevils was reduced to  $5,782 \pm 136$  spores after 3 h. During this 3 h time frame, weevil activities such as contact with inanimate objects and other weevils or self-grooming were observed in the holding cage. Thirty min post inoculation, conidia were found in clusters around ommatidia on the eyes, on setae, in depressions in the integument, on the ventral pronotum, and in the grooves of scales located along the ventral surfaces. At 6 h, weevils were checked for signs of spore enlargement or germination. No evidence was found to suggest spore growth at that time. At 12 h, peels were similar to those taken at 30 min and 6 h post inoculation. Spores were found on plumose setae, around the base of setae, and in clusters around ommatidia. Spores were abundant in pits of the pronotum and in the grooves between the ommatidia of both eyes. Debris from insect rearing medium collected on some of the peels could account for spores clustering in particular areas. Clusters of spores associated with rearing medium were not tabulated with the results.

Initially, spores measured 1.3 µm in length, and began to enlarge at 12 h to 2.9 µm. Measurements were taken for spore length not width. Germination observed at 18 h was  $24 \pm 3\%$  on abdominal sections,  $10 \pm 3\%$  on the pronotum and beak,  $35 \pm 3\%$  on the eyes, and  $9 \pm 2\%$  on scales on ventral abdominal sections (Fig. 1). Enlarged conidia were present on the elytra but had not begun to germinate at 18 h. Germination observed at 30 h

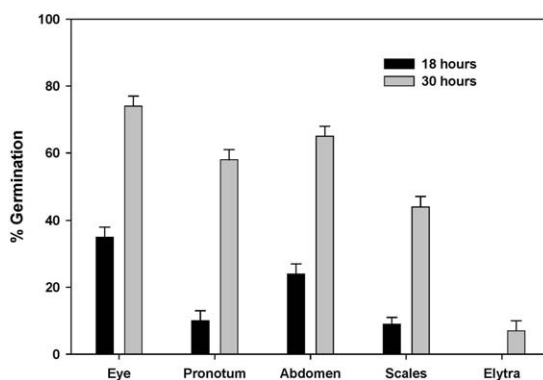
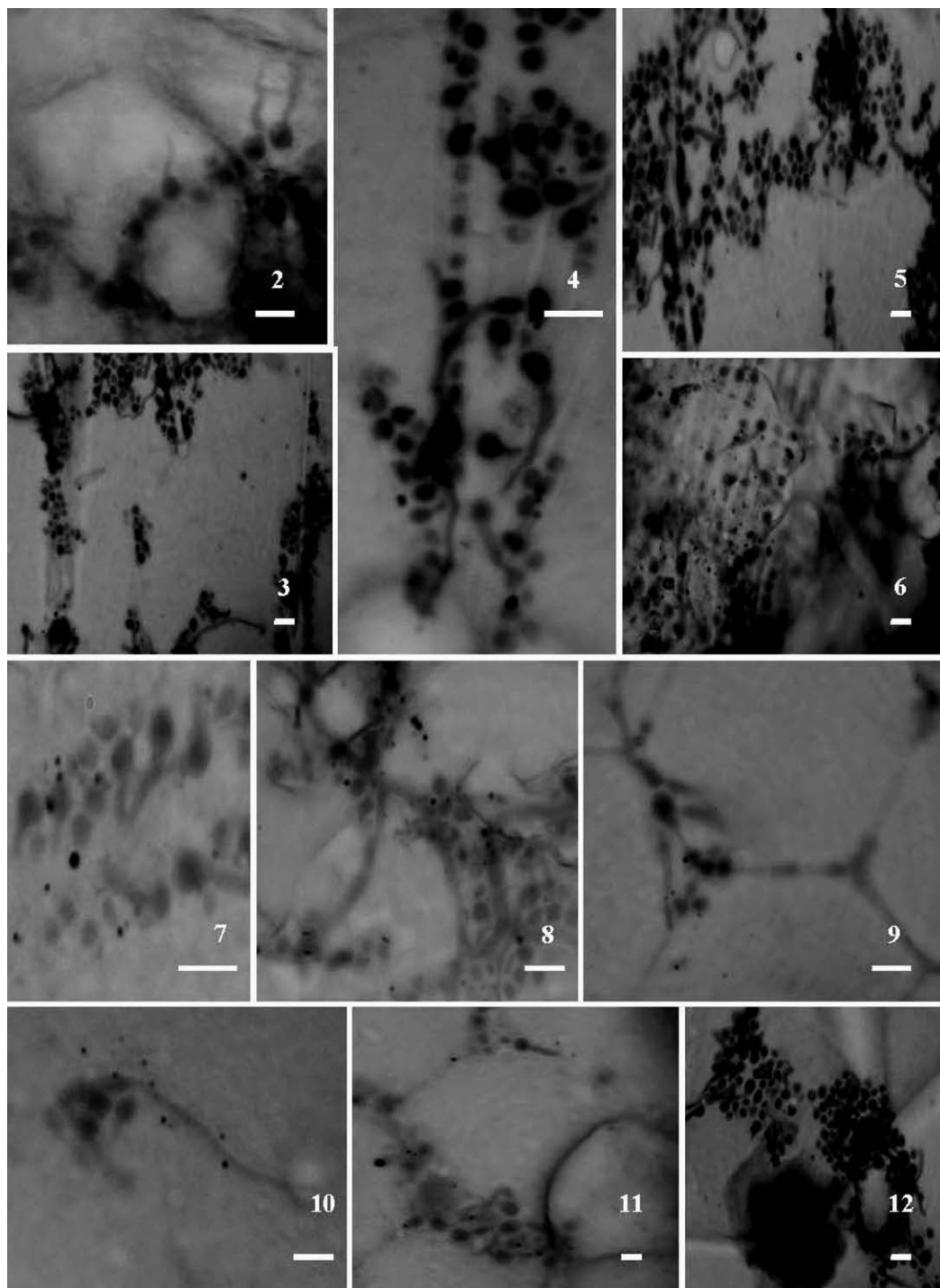


Fig. 1. Percentage of *Beauveria bassiana* conidia germinating on different areas of adult *Diaprepes abbreviatus* exoskeleton at 18 and 30 h post inoculation.



Figs. 2-12. *Beauveria bassiana* conidia on adult *Diaprepes abbreviatus* exoskeleton 30 h post inoculation. 2. Conidia germinating on ovipositor. 3. Conidia germinating in cluster on edge of sternum. 4. Conidia germinating on edge of sternum. 5. Conidia germinating on ventral metathorax. 6. Conidia in clusters germinating among scales of sternum. 7. Conidia germinating on pronotum. 8. Conidia germinating around hair on sternum. 9. Conidia germinating on ommatidia of left eye. 10. Conidia germinating on beak near eye. 11. Conidia germinating on ommatidia of right eye. 12. Conidia germinating on edge of eye. Scale bars: 5  $\mu$ m.

was  $58 \pm 3\%$  on the pronotum,  $74 \pm 3\%$  on the eyes,  $65 \pm 3\%$  on abdominal sections, and  $44 \pm 3\%$  on scales on abdominal sections (Fig. 1). At 30 h post inoculation conidia were germinating on the ovipositor (Fig. 2), in clusters on the edge of sternal segments (Fig. 3-4), on the ventral metasternum (Fig. 5), and among scales of sterna (Fig. 6). At 30 h, germination was observed on the dorsal surface of both of the elytra at a rate of  $7 \pm 3\%$ . Conidia were also found germinating on the dorsal surface of the pronotum (Fig. 7), around hairs on the sterna (Fig. 8), on the ommatidia of the left eye (Fig. 9), on the beak near the left eye (Fig. 10), on the ommatidia of the right eye (Fig. 11), and on the edge of the right eye (Fig. 12).

#### DISCUSSION

*Diaprepes* weevils were infected with a dry, commercially produced wettable powder of *B. bassiana* conidia, strain GHA, a strain previously used in studies of Colorado potato beetle larvae by Furlong & Groden (2003). Conidial lengths of *B. bassiana* isolates tested by Sosa-Gomez et al. (1994) showed lengths varying among isolates from 0.95 to 3.41  $\mu\text{m}$ . These dimensions agree with those measured in the present study at the time of inoculation. The development of *B. bassiana* on adults and larvae of *D. abbreviatus* is similar to other entomopathogenic deuteromycetes, including *Nomuraea* (Boucias & Pendland 1982).

Essentially nothing was known as to how spores of *B. bassiana* would attach to and aggregate on the surface of *Diaprepes* root weevil adults after inoculation. Our results demonstrated that spore concentrations on the weevils surface was reduced approximately 3-fold 3 h post inoculation. This reduction may be explained by weevil activity, contact, or self grooming observed during this time. This research showed that conidia tend to condense in intersegmental areas and around hairs and the base of appendages. Natural grooves in scales also filled with spores. There has been little definitive data as to the timing of spore germination once spores make contact with adult *D. abbreviatus* integument. We have shown that spores germinate at different rates on different areas of the weevils' exoskeleton. Several authors have studied why *B. bassiana* spores germinate when they come in contact with insect cuticle. Factors that may inhibit or enhance germination and penetration include cuticle density or compounds on insect integument (Woods & Grula 1984; Soza-Gomez et al. 1997). In addition, the lack of nutrients on sclerotized beetle cuticle is a limiting factor in fungal growth and development (Hunt et al. 1984). Results obtained from this study indicate that germination is limited on the heavily sclerotized elytra. By observing germination rates on various regions we could document (1) where the largest numbers of spores

will germinate most readily on the *Diaprepes* exoskeleton, and (2) the viability of conidia in a dry commercially available wettable powder. Data generated in this phase of research will enable one to project the likely source of direct fungal entry and provide researchers with the information they need to produce an effective conidial delivery system for *Diaprepes* root weevil control.

#### ACKNOWLEDGMENTS

The senior author thanks Drs. K. L. Buhr, J. W. Kimbrough, C. W. McCoy, J. M. Sivinski, and F. W. Zettler for service on her Ph.D. Supervisory Committee. We greatly appreciate J. M. Sivinski and C. J. Stuhl for reviewing the manuscript in preparation for publication.

#### REFERENCES CITED

- BEAVERS, J. B. 1982. Biology of *Diaprepes abbreviatus* (Coleoptera: Curculionidae) reared on an artificial diet. *Florida Entomol.* 65: 263-269.
- BOUCIAS, D. G., AND PENDLAND, J. C. 1982. Ultrastructural studies on the fungus, *Nomuraea rileyi*, infecting the Velvetbean caterpillar, *Anticarsia gemmatilis*. *J. Invertebr. Pathol.* 39: 338-345.
- BULLOCK, R. C., MCCOY, C. W., AND FOJTIK, J. 1988. Foliar sprays to control adults of the citrus root weevil complex in Florida. *Proc. Florida State Hort. Soc.* 101: 1-5.
- DE HOOG, G. S. 1972. The genera *Beauveria*, *Isaria*, *Trititachium* and *Acrodontium*. *Stud. Mycol.* 1: 1-41.
- DELP, C. J. 1954. Effect of temperature and humidity on germination of powdery mildew conidia. *Phytopathol.* 44:615-628.
- DUNCAN, L. W., AND MCCOY, C. W. 2001. Hydraulic lift increases herbivory by *Diaprepes abbreviatus* larvae and persistence of *Steinernia riobrave* in dry soil. *J. Nematol.* 33: 142-146.
- FERRON, P. 1981. Pest control by the fungi *Beauveria* and *Metarhizium*, pp. 465-482. In H. D. Burges [ed.], *Microbial Control of Insects and Mites*. Academic Press, New York, London.
- FURLONG, M. J., AND GRODEN, E. 2003. Starvation induced stress and the susceptibility of the Colorado potato beetle, *Leptinotarsa decemlineata*, to infection by *Beauveria bassiana*. *J. Invertebr. Pathol.* 83: 127-138.
- FUTCH, S., AND MCCOY, C. W. 1992. Citrus root weevils. *Citrus and Veg. Mag.* 55: 27, 30, 31-33, 36-37.
- GRAHAM, J. H., MCCOY, C. W., AND ROGERS, J. S. 1997. The *Phytophthora-Diaprepes* weevil complex. *Citrus Ind.* 78: 67-70.
- HARARI, A. R., AND LANDOLT, P. J. 1997. Orientation of sugarcane rootstalk borer weevil, *Diaprepes abbreviatus* (L.) (Coleoptera: Curculionidae), to weevil, frass, and food odors. *J. Chem. Ecol.* 23: 857-868.
- HEDLUND, R. C., AND PASS, B. C. 1968. Infection of the alfalfa weevil, *Hypera posica*, by the fungus *Beauveria bassiana*. *J. Invertebr. Pathol.* 11: 25-34.
- HUNT, D. W. A., BORDEN, J. H., RAHE, J. E., AND WHITNEY, H. S. 1984. Nutrient-mediated germination of *Beauveria bassiana* conidia on the integument of the bark beetle *Dendroctonus ponderosae* (Coleoptera: Scolytidae). *J. Invertebr. Pathol.* 44: 304-314.
- KIMBROUGH, J. W. 1963. The development of *Pleochaeta polychaeta* (Erysiphaceae). *Mycologia.* 55: 608-626.

- MICROSOFT CORP. 1997. Excel version 97 SR-1, Microsoft Co. Bellevue, WA.
- POPRAWSKI, T. J., RIBA, G., JONES, W. A., AND AIOUN, A. 1988. Variation in isoesterase profiles of geographical populations of *Beauveria bassiana* (Deuteromycotina: Hyphomycetes) isolated from *Sitona* weevils (Coleoptera: Curculionidae). Environ. Entomol. 17: 275-279.
- ROGERS, J. S., GRAHAM, J. H., AND MCCOY, C. W. 1996. Insect plant pathogen interactions: preliminary studies of *Diaprepes* root weevil injuries and *Phytophthora* infections. Proc. Florida State Hort. Soc. 109: 57-62.
- SAFAVI, S. A., SHAH, F. A., PAKDEL, A. K., RASOULIAN, G. R., BANDANI, A. R., AND BUTT, T. M. 2007. Effect of nutrition on growth and virulence of the entomopathogenic fungus *Beauveria bassiana*. FEMS Microbiol. Lett. 270: 116-123.
- SHURTLEFF, M. C., AND AVERRE, C. W. 1997. The plant disease clinic and field diagnosis of abiotic diseases. pp. 99-100. APS Press, The American Phytopathol. Society. St. Paul, MN.
- SOSA-GÓMEZ, D. R., ALVES, S. B., AND MILANI, M. T. 1994. Characterization and phenetic analysis of geographical isolates of *Beauveria* spp. Pesq. Agropec. Brasil. 29: 401-409.
- SOSA-GÓMEZ, D. R., BOUCIAS, D. G., AND NATION, J. L. 1997. Attachment of *Metarhizium anisopliae* to the southern green stinkbug *Nezara viridula* cuticle and fungistatic effect of cuticular lipids and aldehydes. J. Invertebr. Pathol. 69: 31-39.
- STEINHAUS, E. A. 1949. Principals of Insect Pathology. McGraw-Hill Book Co., NY. 757 pp.
- TAN, Y., AND EKRAMODDOULLAH, K. M. 1990. Immunochemical characterization of the entomopathogenic fungus *Beauveria bassiana*. J. Invertebr. Pathol. 57: 269-276.
- THOMAS, M. B., AND BLANFORD, S. 2003. Thermal biology in insect-parasite interactions. Trends in Eco. and Evol. 18: 344-350.
- WOODRUFF, R. E. 1964. A Puerto Rican weevil new to the United States (Coleoptera: Curculionidae). Florida Dept. Agric. Div. Plant Ind. Entomol. 77: 1-3.
- WOODS, S. P., AND GRULA, E. A. 1984. Utilizable surface nutrients on *Heliothis zea* available for growth of *Beauveria bassiana*. J. Invertebr. Pathol. 43: 259-269.
- ZHANG, Y. A., AND TAN, Y. C. 1987. A preliminary study on the relationship between esterase zymograms of *Beauveria bassiana* strains and their virulence. For. Sci. Tech. 12: 14-16 (in Chinese).