

Assessing the Effect of Disturbances on the Functionality of Direct Protection Forests

Authors: Vacchiano, Giorgio, Berretti, Roberta, Mondino, Enrico
Borgogno, Meloni, Fabio, and Motta, Renzo

Source: Mountain Research and Development, 36(1) : 41-55

Published By: International Mountain Society

URL: <https://doi.org/10.1659/MRD-JOURNAL-D-15-00075.1>

BioOne Complete (complete.BioOne.org) is a full-text database of 200 subscribed and open-access titles in the biological, ecological, and environmental sciences published by nonprofit societies, associations, museums, institutions, and presses.

Your use of this PDF, the BioOne Complete website, and all posted and associated content indicates your acceptance of BioOne's Terms of Use, available at www.bioone.org/terms-of-use.

Usage of BioOne Complete content is strictly limited to personal, educational, and non - commercial use. Commercial inquiries or rights and permissions requests should be directed to the individual publisher as copyright holder.

BioOne sees sustainable scholarly publishing as an inherently collaborative enterprise connecting authors, nonprofit publishers, academic institutions, research libraries, and research funders in the common goal of maximizing access to critical research.

Assessing the Effect of Disturbances on the Functionality of Direct Protection Forests

Giorgio Vacchiano*, Roberta Berretti, Enrico Borgogno Mondino, Fabio Meloni, and Renzo Motta

* Corresponding author: giorgio.vacchiano@unito.it

Department of Agricultural, Forest and Food Sciences, University of Turin, Largo Braccini 2, 10095 Grugliasco (TO), Italy

© 2016 Vacchiano et al. This open access article is licensed under a Creative Commons Attribution 4.0 International License (<http://creativecommons.org/licenses/by/4.0/>). Please credit the authors and the full source.



Forests provide direct protection to human settlements from hydrogeomorphic hazards. This paper proposes a method for assessing the effect of natural disturbances on the functionality of direct protection forests (DPFs)

in order to prioritize management interventions. We georeferenced disturbance data for wildfires, wind and snow damage, avalanches, and insects and overlaid them to a region-wide DPF map. Within each disturbance polygon, we used a Landsat-5 TM image to identify DPFs with insufficient vegetation cover, by using a maximum likelihood classifier of 6 spectral bands plus 5 vegetation indices. For each disturbance agent, we fitted a generalized linear model of the probability of finding a forested pixel, as a function of topography, time since disturbance, distance from disturbance edge, summer precipitation, and drought in the disturbance year. DPFs covered almost half of total forest area in the study region. Disturbance by insects occurred in

more than one sixth of all forests. Avalanche and wildfire occurred each in about one tenth of total forest area, and wind and snow disturbance in only 1%. In the last 50 years, disturbances had a recurrence rate of 3% every 10 years. Almost one sixth of DPFs are currently lacking sufficient forest cover. Wildfires resulted in the highest rate of nonforested pixels (42% of all DPFs), followed by avalanches (21%). Forest recovery was explained by time elapsed, distance from edge (for conifers), and aspect. Summer precipitation and drought had a mixed influence. Our approach to assessing the effect of disturbances on the functionality of DPFs is reproducible in all mountain regions using institutional or open-access geographic data and provides a tool to prioritize DPF management by indicating where restoration of protection is most urgent.

Keywords: Natural disturbance regime; ecosystem services; wildfire; Landsat; *Lymantria monacha*; natural hazards; protection forests; restoration; *Zeiraphera griseana*.

Peer-reviewed: November 2015 **Accepted:** December 2015

Introduction

Mountainous areas are associated with a number of hydrogeomorphic hazards, including rockfall, landslides, snow and rock avalanches, and debris and earth flows (Korup and Clague 2009). Forests may provide direct protection to human settlements and activities from some of these hazards (Motta and Haudemand 2000; Dorren et al 2005; Covi 2008; van Beek et al 2008; Bebi et al 2009), by preventing their occurrence (eg by snowpack stabilization) or mitigating their intensity (eg by slowing or blocking falling rocks) (Berger and Rey 2004). This type of forest is referred to as a direct protection forest (DPF).

The extent of forests managed for their protection services is included in the 1995 Montreal Process (Brand 1997), the Helsinki Process (MCPFE 2002), and the Forest Resources Assessment of the Food and Agriculture Organization (FAO 2000) as an indicator of sustainable forest management in mountain ecosystems. This service (Dorren et al 2004) has long been recognized in areas with exposure to hazards, such as the European Alps, and this

has resulted in bans on timber harvesting since at least the 14th century (Sablonier 1995).

Currently, DPFs must be identified and undergo special management under national or regional forest regulations in Austria, France, Germany, Italy, and Switzerland (Weiss 2000; Brang et al 2006; Wehrli et al 2007; Brosinger and Tretter 2009), as well as Greece (Zagas et al 2011), Japan (Shimamura and Togari 2006), and Turkey (Aydin and Dorren 2010). In other parts of the world, the generic role of forests in soil protection or hazard mitigation is recognized, but formal identification of DPFs is surprisingly lacking, even in areas with a high risk of hydrogeomorphic hazards, such as winter resorts in North American mountain areas (Ives et al 1976).

The effectiveness of DPFs depends not only on their location, but also on elements of forest structure that maximize physical hazard mitigation, such as density, tree diameter, and canopy cover (Bebi et al 2001; Frehner et al 2005; Berretti et al 2006; O'Hara 2006; Teich et al 2012; Dorren et al 2015). Moreover, like all ecosystems, DPFs are subject to natural disturbances (White and Pickett

1985)—including wildfires, windstorms, herbivores, and wood-boring insects—that can temporarily disrupt their structure and therefore their functionality. Disturbances are increasing in magnitude and frequency across the Alpine region (Sass and Oberlechner 2012; Seidl et al 2014b). The response of ecosystem functions to single-pulse or interacting disturbances can follow various trajectories: short-term change and recovery, gradual continuous modification, or abrupt transition to a different state (Scheffer et al 2012). The speed, direction, and mode of ecosystem response depends on ecosystem resistance and resilience (Holling 1973), and on the type, frequency, time of occurrence, intensity, and extent of the disturbance, considered either as a single event (eg Vacchiano et al 2015b) or integrated over a disturbance regime (Sousa 1984; Turner et al 1993).

An undisturbed DPF is not automatically functional, because age, site, or other limitations can result in forest structures being temporarily or permanently unsuitable to mitigate hydrogeomorphic hazards. However, rapid assessment and urgent action are often needed following sudden structural changes by natural disturbance agents. Building on previous knowledge on optimal stand structure in DPFs, this study aimed to assess the effect of abiotic and biotic disturbance agents on the current functionality of DPFs, measured by their vegetation cover. In particular, we integrated spatially explicit information on DPFs, time-labeled perimeters of natural disturbances by wildfire, wind and snow damage, avalanches, and insects for variable time periods in the last 50 years, and classified remotely sensed land cover into forested, herbaceous, and nonvegetated areas. The overlay of such information allowed us to assess the temporal recovery of forest structure following different disturbances, model the effect of disturbance size, time of occurrence, and other environmental variables on DPF effectiveness, and prioritize DPF restoration.

Study area

The study area, the Aosta Valley region in northwest Italy (Figure 1), covers 3262 km² and has a topography shaped by an east–west valley with several north–south protrusions, legacies of the last ice age. Mean elevation is 2100 m above sea level (masl). More than 90% of the land has an elevation of at least 1000 masl, and 60% is above 2000 masl. Climate is continental with cold winters and hot summers; mean annual rainfall in Aosta city (45°26'N, 7°11'E) is 494 mm (Biancotti et al 1998), with a dry season extending from June to September. Winter precipitation usually comes as snow. The study area exhibits both crystalline (granite) and metamorphic bedrocks, but most of the landscape is covered by quaternary deposits of glacial, gravitative, or colluvial origin. The pedological background is dominated by shallow (Lithic, Umbric,

and Dystric Leptosols) or eroded soils (Eutric and Calcaric Regosols), acid soils with organic matter, iron oxides and aluminum accumulation (Dystric Cambisols, Haplic Podzols, and Humic Umbrisols), or alluvial Eutric Fluvisols in the valley bottoms (Costantini et al 2004).

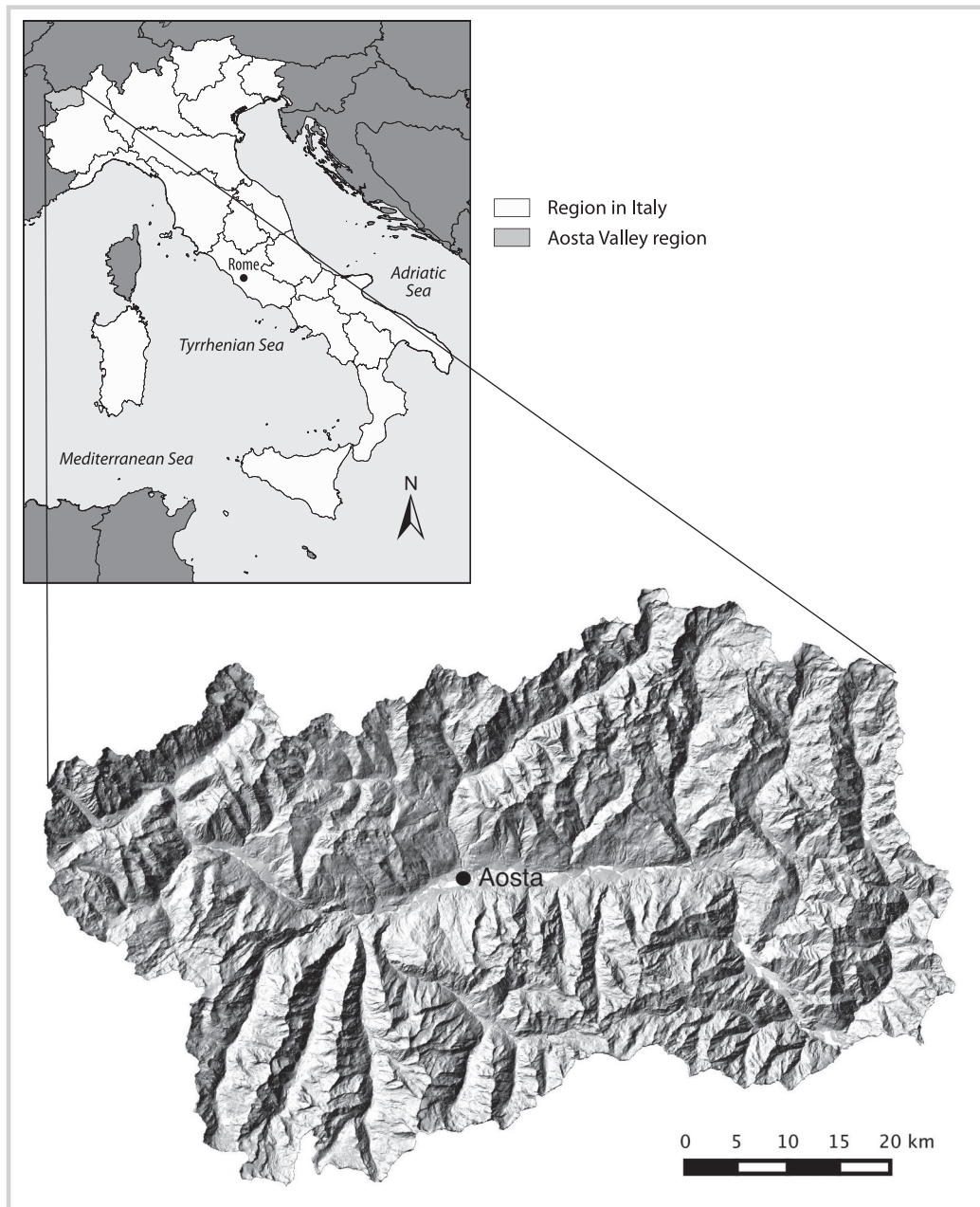
Forests cover 98,439 ha (INFC 2007), a third of the region's area. The dominant forest types are conifers—mixed larch (*Larix decidua* Mill.) and stone pine (*Pinus cembra* L.) (45% of total forest cover), Norway spruce (*Picea abies* [L.] H. Karst.) (19%), and Scots pine (*Pinus sylvestris* L.) (13%). Broadleaf forest types such as chestnut (*Castanea sativa* Mill.), downy oak (*Quercus pubescens*) (4% each), and early-seral secondary woodlands (12%) are common at lower elevations. Other forest cover types in the region include silver fir (*Abies alba* Mill.) and beech (*Fagus sylvatica* L.) (1% each), Austrian pine (*Pinus nigra* J. F. Arnold) (0.5%), and riparian forests (0.5%) (INFC 2007). The maximum elevation of the tree line is about 2300 masl (Viglietti et al 2010).

Hydrogeological protection is one of the most important ecosystem services provided by forests in the region. One fourth of total forest area is susceptible to hydrogeomorphic processes, including landslides (2700 ha), avalanches (4000 ha), and rockfall (14,600 ha) (INFC 2007). Most forests (80%) sit on slopes >40%; this rather conservative threshold, together with watershed delineation algorithms, has been previously used to map potential DPFs as a subset of total regional forest cover (Meloni et al 2006). Potential DPFs cover 40,557 ha—12.4% of the region's territory and 42.7% of total forest cover (Figure 2). Larch is the most common forest cover type with a protective function; however, chestnut has the greatest share of its forests in DPFs, 58% (Meloni et al 2006).

Wildfires occur mainly in late winter and early spring and are 95% anthropogenic in origin (Vacchiano et al 2015a). Surface fires usually start at the bottom of the valley and spread upward, often transitioning into crown fires in conifers due to the low moisture content of live foliage during the dormant season. Most wildfires are small (average size = 8 ha); however, 70% of the burned area is due to sporadic but relatively large (>20 ha) wildfires. This fire regime is common to several inner Alpine valleys (Moser et al 2010; Zumbunnen et al 2011) and reflects the influence of fire suppression policies adopted throughout the Alpine region (Pezzatti et al 2013; Valesse et al 2014).

Other disturbances include periodic outbreaks of defoliator insects (Baltensweiler and Rubli 1999; Pasquettaz and Negro 2007; Bottero et al 2013) and sporadic damage by other biotic agents, such as bark beetles (*Ips typographus* L. and *Ips sexdentatus* Börner), shoot beetles (*Tomicus piniperda* L. and *Tomicus minor* Hartig), pine processionary moths (*Thaumetopoea pityocampa* Denis & Schifferrmüller), spruce needle rust (*Chrysomyxa ledi* var.

FIGURE 1 Map of the study area. (Map by authors)



rhododendri [DC] Saville), annosum root rot (*Heterobasidion annosum* [Fr.] Bref.), and pine mistletoe (*Viscum album* L.) (Gonthier et al 2010, 2012; Manfred Project 2013).

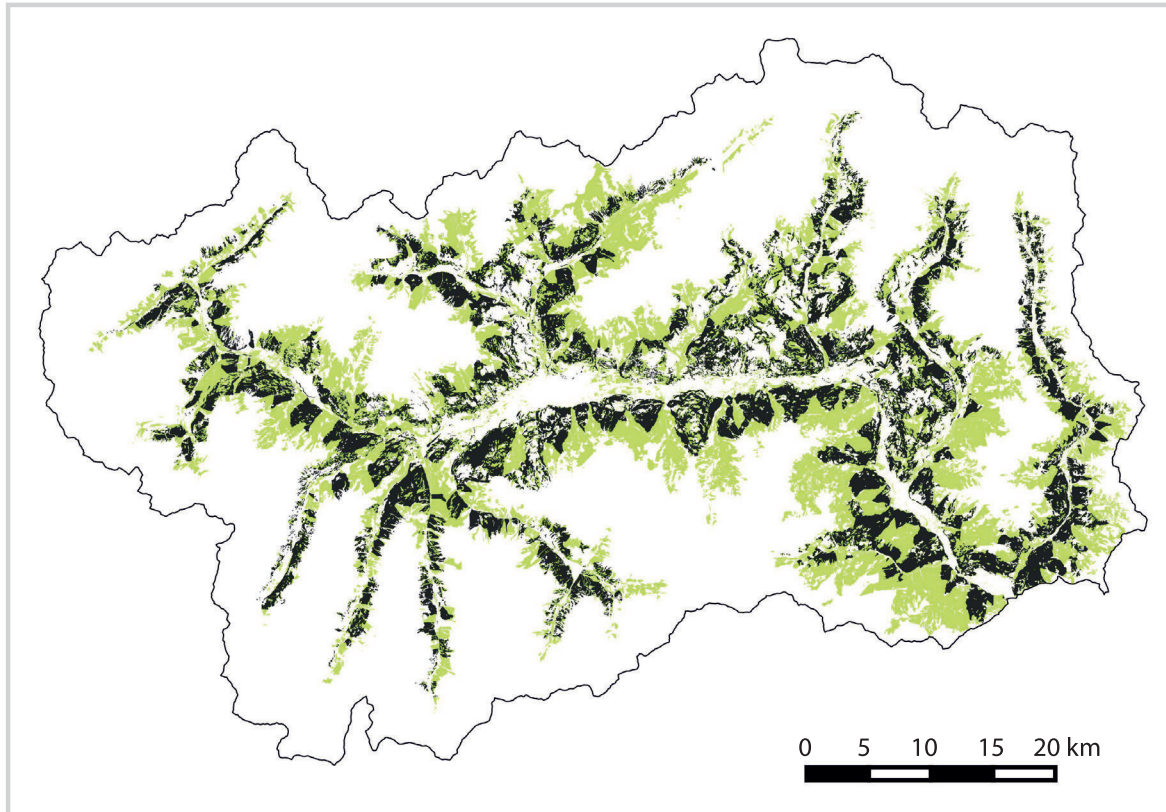
Material and methods

Natural disturbances

We selected for this analysis the following disturbance agents: wildfires, wind and snow, avalanches, and 2 biotic agents, the nun moth (*Lymantria monacha* L.) and the

larch tortrix (*Zeiraphera griseana* Hübner), which have undergone multiyear or recurring outbreaks in the study region (Baltensweiler and Rubli 1999; Pasquettaz and Negro 2007; Bottero et al 2013). Other biotic agents were not investigated due to the episodic nature of the outbreaks or insufficient temporal data. The following data sources were accessed to obtain a spatially and temporally explicit data set on natural disturbances for all forests in the study region.

FIGURE 2 Total forest cover (green) and DPF cover (black) in Aosta Valley.



- **Wildfires:** We georeferenced all fire perimeters from a regional forest fire archive for the years 1961–2010. Fire perimeters had been mapped visually or by GPS (Global Positioning System) by Regional Forest Service staff. Fires smaller than 6 ha were recorded only from 1987; fires smaller than 0.5 ha were recorded since 1995 as points and were georeferenced as such. Beginning in 1987, additional information was available for each fire, such as date and time of the fire, duration, cause of ignition, land use, main forest species, elevation of the ignition point, fire behavior type (surface, crown, or underground), and number of rainless days before ignition.
 - **Wind and snow damage:** We queried all reports of wind- or snow-induced damage (excluding avalanches) in the Regional Forest Service's annual forest health reports for 1990–2010. Reported variables included the location and date, type of event, extent of damaged area, average or minimum/maximum elevation, management unit identification number, mean age and diameter of the damaged stand, forest species involved, and disturbance severity (%). Uncharted events were assigned a circular shape centered on the most likely location of the event, using location, elevation, forest cover, and extent of the damage as proxy information.
 - **Avalanches:** We queried all avalanche polygons in the regional avalanche registry (source: Ufficio Neve e Valanghe–RAVDA), which was established in 1970 and digitized in 2010 (Lunardi et al 2009). Polygons were outlined so as to reproduce the maximum run-out area based on Forest Service yearly reports, historical photographs (more than 31,000 images from 1971 to 2010), and historical newspaper articles (250 from 1800 to 1900).
 - **Insect outbreaks:** We georeferenced available maps of *L. monacha* (1984–1990) and *Z. griseana* (1994–2006) outbreaks. Forest health reports were consulted for additional data for 1990–2010, in the same process reported above for wind and snow damage. For *Z. griseana* only, disturbance severity (%) was available and integrated in the data set.
- We computed the following summary statistics (overall and for each disturbance agent): total and yearly disturbance frequency, disturbed area, disturbance rotation period (Agee 1993), and relative frequency of each disturbance agent in total forest area and in the DPF subset by elevation, slope, aspect class, and plant functional type (ie with or without broadleaves) according to 1990 Corine Land Cover level-3 data (European Environment Agency 2014). Areas disturbed more than

TABLE 1 Disturbance indices used in this study.

Vegetation index	Formula	Source
Forest Disturbance Index	$\text{Brightness}_{\text{TC}} - (\text{Greenness}_{\text{TC}} + \text{Wetness}_{\text{TC}})$	Healy et al (2005)
Normalized Difference Vegetation Index	$(\text{NIR} - \text{Red})/(\text{NIR} + \text{Red})$	Rouse et al (1973)
Normalized Burn Ratio	$(\text{NIR} - \text{SWIR})/(\text{NIR} + \text{SWIR})$	López García and Caselles (1991)
Normalized Difference Infrared Index	$(\text{NIR} - \text{MIR})/(\text{NIR} + \text{MIR})$	Hardisky et al (1983)
Moisture Stress Index	MIR/NIR	Rock et al (1986)

TC = bands from tasseled cap transformation; NIR = near infrared (Landsat TM Band 4); MIR = mid-infrared (Landsat TM Band 5); SWIR = short-wave infrared (Landsat TM Band 7).

once (eg by reburn) were repeatedly accounted for in overall area statistics. For each disturbance agent, we tested whether the frequency distribution of disturbed areas could be fitted by a negative power law (Kolmogorov-Smirnov 1-sample test), as is expected under the “self-organized criticality” hypothesis (Malamud et al 1998; Turcotte and Rundle 2002; Espírito-Santo et al 2014). Finally, we assessed recurrence of each disturbance agent and interactions between disturbances by cross-tabulating the proportion of total forest area disturbed by any temporally ordered binary combination of disturbance agents, relative to the total forest area disturbed by each agent.

Residual protection function in disturbed forests

For legal purposes in Italy, any area designated as forest that would—at some point—lose its tree cover because it has been disturbed is still classified as forest. For this reason, and under the consideration that these sites may sustain a forest cover potentially functional for hydrogeologic hazard protection, we analyzed the functionality of mapped DPF based on their current status as forested versus nonforested.

We used remotely sensed imagery to identify disturbed DPFs with insufficient vegetation cover, which needed urgent management action to restore their protective function. We obtained a recent, cloud-free Landsat 5 TM image of the study region (WRS-2 path/row: 195/28) taken during the vegetative period (image taken on 20 September 2011; scene ID: LT51950282011263MOR00). Image resolution was 30 m. This is larger than the minimum area considered conducive to avalanche formation in forests, that is, a width of 15 to 20 m (Schneebeil and Meyer-Grass 1993). It is insufficient to detect a snow gliding hazard (Viglietti et al 2013), but it is the highest resolution currently available for unrestricted-access, large-scale multispectral Earth imagery.

For each Landsat band, we converted digital numbers to at-sensor radiance and then to top-of-atmosphere reflectance by applying image-specific rescaling coefficients and illumination parameters. Top-of-atmosphere values were atmospherically corrected based

on dark-object subtraction, which assumes that any radiance received at the sensor for a dark-object pixel is due to atmospheric path radiance (Chavez 1996). The reflectance threshold for dark objects was selected in each band as the highest top-of-atmosphere value with an image-wide frequency of <1000 pixels. This value was then subtracted from the reflectance across the whole scene to reduce scattering influences. Topographical correction was achieved by the C-correction method (Teillet et al 1982) modified with an additional inverse-squared elevation factor to account for atmospheric thickness.

We computed 5 reflectance indices recommended by the literature for the analysis of post-disturbance vegetation recovery (Table 1). The Forest Disturbance Index was computed following a tasseled cap transformation of the 6 TM reflectance bands (Crist and Cicone 1984); preliminary to this calculation, the 3-tasseled cap indices were normalized using their respective mean and standard deviation, computed over all pixels contained within polygons of a preexisting map of regional forest cover (Meloni et al 2006).

After filtering out water- and snow-covered pixels, we classified current land cover into 4 classes: forested, meadow (ie mowed and fertilized), pasture, and rocks/bare soil. To do so, we visually delimited 3 to 5 regions of interest for each land-cover class on the corrected Landsat image, and used them to train a maximum likelihood classifier (Foody et al 1992) based on 6 Landsat bands (excluding thermal infrared) plus the 5 disturbance indices. Minimum probability for successful classification was set to 80%; the land cover map was validated by computing classification error for each class in a random sample of 200 points (50 per class) extracted outside of the selected regions of interest and compared against visual classification of the most recent Google Earth image into the same land-cover classes. Finally, we produced summary statistics and maps of current land cover in DPFs, and compared the relative frequency of land cover classes inside and outside disturbance polygons. We assumed that DPF pixels currently covered with meadow, pasture, or rocks and bare soil were not functional.

Effect of disturbances on DPFs

In order to assess the ability of DPFs to recover from disturbances at the pixel (30 m) scale, we modeled the probability of each DPF pixel being functional (1 = forested) or nonfunctional (0 = nonforested) by means of generalized linear models, as functions of disturbance size, time since disturbance, topography, and climate.

The response variable was modeled by a binomial distribution (logit link); a correction for zero inflation was applied when necessary (Hall 2000). A total of 9 models were built, 1 for each combination of disturbance type (crown and surface fire were fitted in separate models) and plant functional type (with or without broadleaves), as regeneration follows fundamentally different dynamics in each of these situations (eg Pausas 1999; Chen et al 2009; Ilisson and Chen 2009; Marzano et al 2012; Bergeron 2014; Vacchiano et al 2014). Combinations resulting in insufficient data were pooled (eg there was only 1 model for wind and snow disturbance). Mapping of plant functional types based on Corine Land Cover data (European Environment Agency 2014) required the consideration of a slightly different number of forest pixels than mapping based on the most recent forest cover map (Meloni et al 2006). This was especially true for areas at the tree line (eg when analyzing disturbance by *Zeiraphera* that occurs on high-elevation larch forests). Variables included the following:

1. Elevation, slope, and aspect (linearized by cosine transformation), from a regional digital elevation model at 10 m resolution.
2. Time since disturbance as of 2011 (not analyzed for avalanches).
3. Mean summer precipitation for 1950–2000 at 30 arcsec resolution from the Worldclim climate grid (Hijmans et al 2005). Worldclim data are strongly correlated to elevation in mountainous terrain; in order to avoid collinearity between independent variables, we computed rainfall variation independent of elevation using the residuals of a linear model between the two variables.
4. Drought in the growing season of the disturbance year (not analyzed for avalanches), expressed by computing the Standardized Precipitation Evapotranspiration Index (Vicente-Serrano et al 2010) for April to August using historical monthly data from the Aosta meteorological station (Figure 1).
5. Minimum distance to the disturbance polygon edge (only for wildfires, wind and snow, and avalanches, as polygons for *Lymantria* and *Zeiraphera* had already been aggregated by the data provider from smaller disturbance units).

All variables were spatially resampled at a 30 m resolution, filtered to avoid collinearity (Pearson's $R < 0.7$), and standardized in order to compare effect

sizes. Generalized linear model goodness-of-fit was measured by percent deviance explained. For each model, we computed both absolute and standardized effect sizes, and scrutinized residual patterns in order to ascertain the absence of nonlinear effects. All analyses were carried out using the package glmmADMB (Bolker et al 2012) from the R statistical package 3.1 (R Core Team 2015).

Results

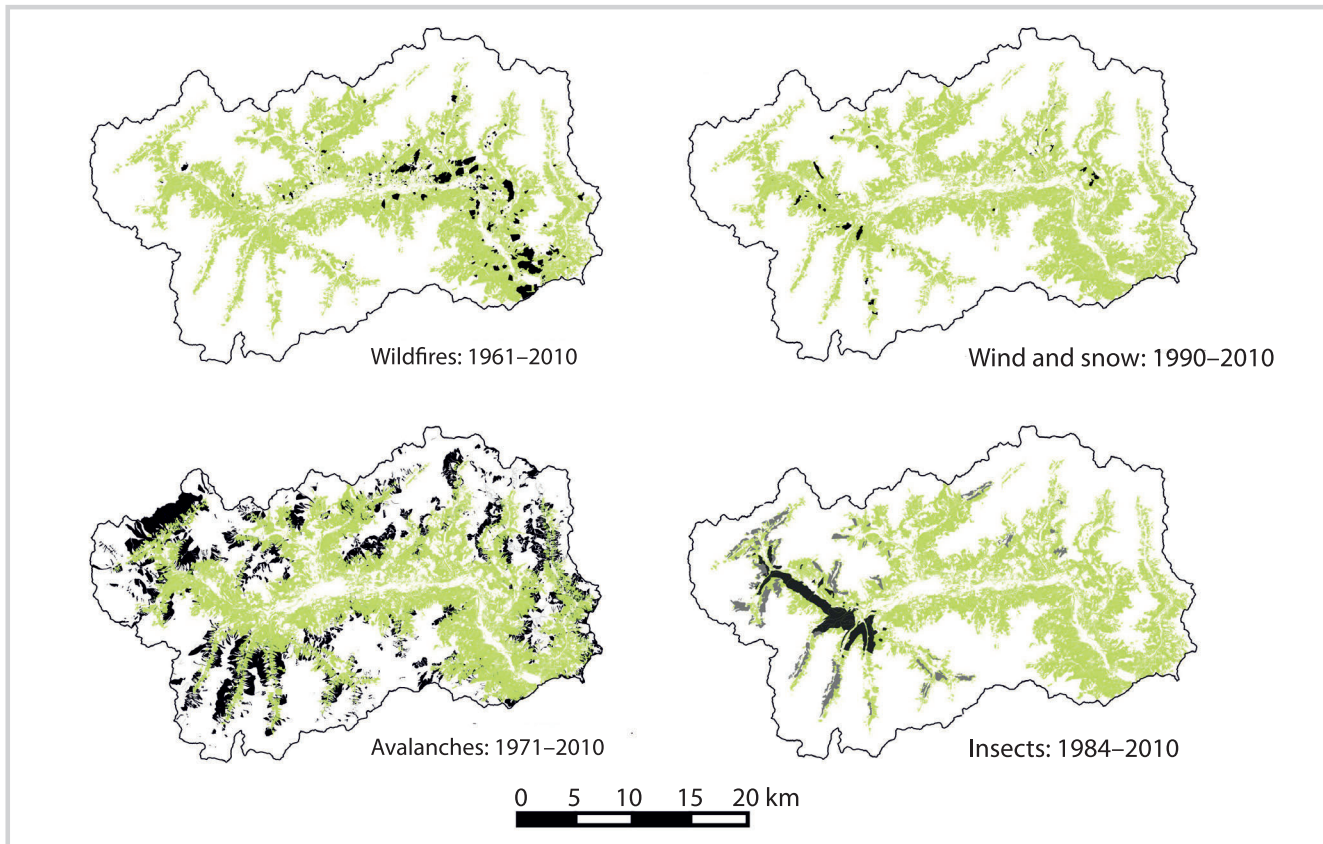
Data for different disturbances were available for different but overlapping periods (Figure 3). The disturbance database included 1765 wildfires, of which 1195 were smaller than 0.5 ha, 52 wind and snow damage events, 2538 avalanches, 7 yearly totals for *L. monacha* outbreaks, and 56 individual outbreaks of *Z. griseana*. Avalanche data were not available broken down by year.

During the years for which data are available, avalanches disturbed the greatest land area, 52,975 ha. The total land area disturbed by insects was 16,813 ha, by wildfire was 7470 ha, and by wind and snow was 1093 ha (Table 2). When scaled to the periods of data availability, and relative to the total forest cover of the region, these figures result in a disturbance rotation time of 1806 years for wind and snow damage, 659 years for wildfires, and 120 years for insects.

Forest disturbance frequencies varied a great deal over time, with exceptional years for wildfire damage and wind and snow damage, and pulses of insect outbreaks showing up with multiyear frequency (Figure 4). The largest wildfire covered about 400 ha; avalanche areas can be much larger, up to 1650 ha. However, most of the events were small, especially the wildfires. Except for insect outbreaks, for which only area-based estimates were available instead of single-event records, none of the disturbance agents could be fitted by a negative power law distribution of disturbed areas (Kolmogorov-Smirnov test, $P > 0.05$). The proportion of small events was higher than that expected (Figure 5), indicating that large, infrequent disturbances may be missing from the data set.

Zeiraphera was the most frequently recurring disturbance agent in the study region: more than 21% of disturbed forests were hit more than once (Table 3). Avalanche data, which were not temporally explicit, could not be evaluated for this comparison. When normalized by the number of monitoring years, wildfires, wind and snow, and *Lymantria* outbreaks had similar recurrence rates (0.29, 0.23, and 0.27% per year, respectively). The interaction between wildfire and wind and snow disturbance was negligible; in contrast, a non-negligible 13% of areas disturbed by wind and snow were subsequently disturbed by *Zeiraphera* or *Lymantria*, while 5% of *Lymantria* sites were subsequently disturbed by wind or snow.

FIGURE 3 Total forest cover (green) and total land area disturbed (black) by different agents in Aosta Valley. For insect disturbance, dark gray indicates *L. monacha* and light gray *Z. griseana*.



Disturbances in DPFs occurred according to definite gradients of elevation, slope, and aspect. Fire and wind/snow followed opposite topographic trends: DPFs were more likely to be disturbed by fires on low-elevation, steep, south-exposed slopes, and by wind and snow on mid- to high-elevation, north-exposed, gently sloping sites. Avalanche incidence was much higher at the tree line (2200 masl and higher), and exhibited no clear trend

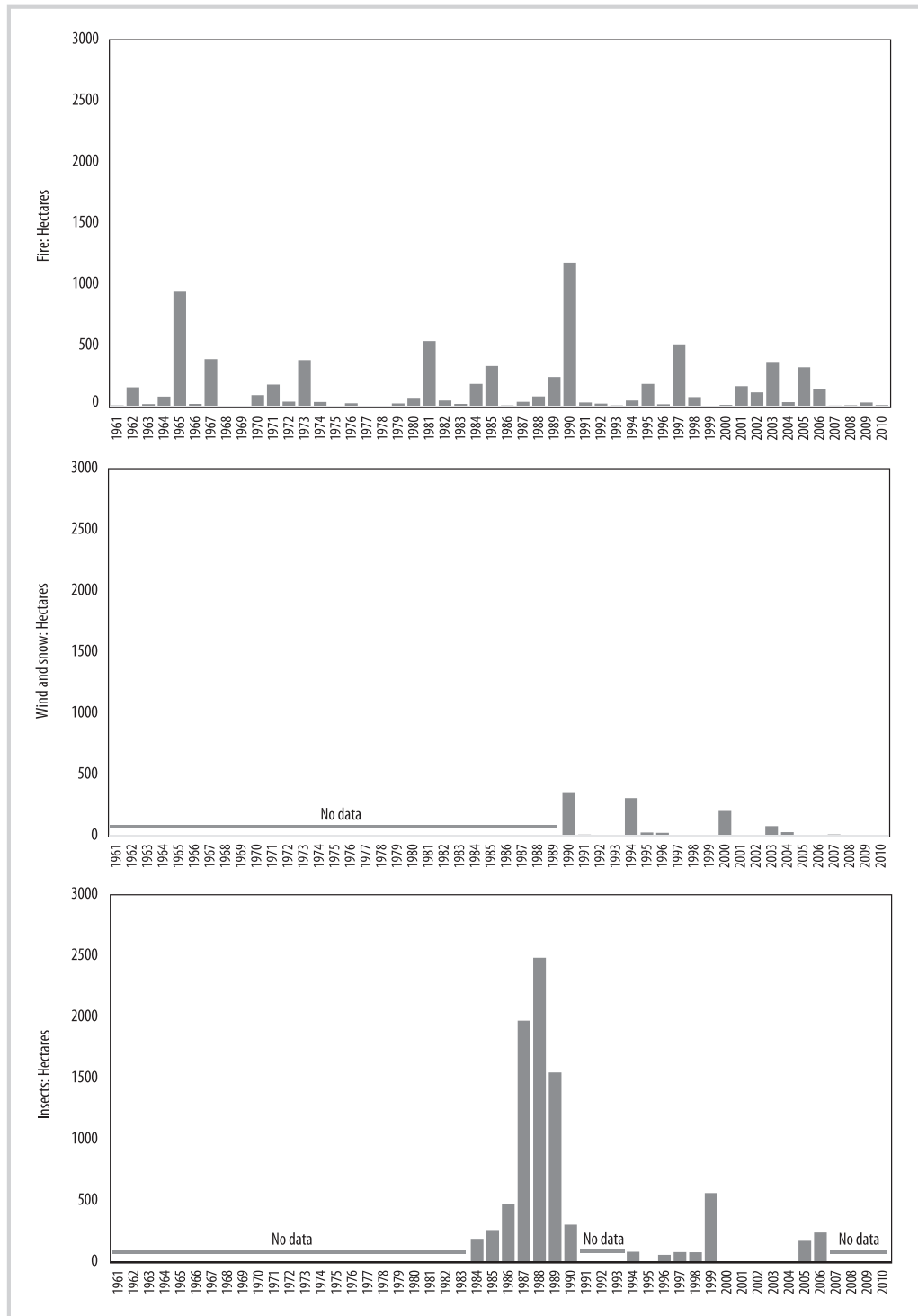
related to slope or aspect. The highest incidence of insect outbreaks centered at ~1800 m of elevation, with *Lymantria* occurring almost exclusively on north-exposed slopes and *Zeiraphera* preferring high-elevation, steep sites. All disturbances except wildfires had a higher incidence in conifer than in broadleaf DPFs (*Supplemental Material*, Figures S1–S4; <http://dx.doi.org/10.1659/MRD-JOURNAL-D-15-00075.S1>).

TABLE 2 Total land area (ha) disturbed by different agents.

Agent	Data available for	Total land area	Minimum	Maximum	Mean	Median	Standard deviation	Yearly average
Wildfires	1961–2010	7470	0.01	398.7	4.2	0.1	23.97	146.9
Wind and snow	1990–2010	1093	0.01	147.2	21.0	6.2	36.10	54.7
Avalanches	1970–2010	52,975	0.006	1,653.0	20.7	6.2	52.30	a)
Insects	1984–1990 and 1994–2006	16,813	b)	b)	b)	b)	b)	840.7

a) Temporal data not available for avalanches.

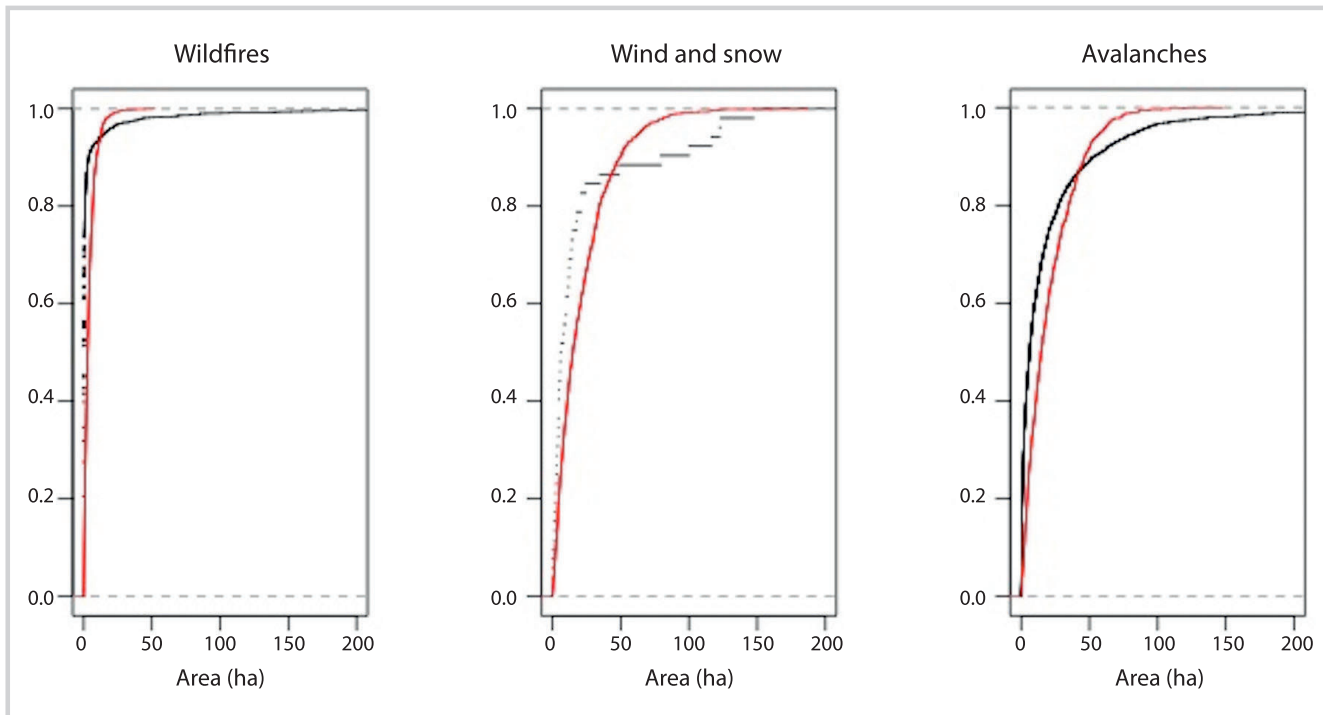
b) Data on insect outbreaks were summarized by yearly damage and did not necessarily correspond to individual disturbance events.

FIGURE 4 Area (ha) disturbed by year and disturbance agent in Aosta Valley forests.

Classification of the Landsat scene by maximum likelihood produced a 4-class land cover map that was successfully validated against the most recent Google Earth imagery. Although meadows and pastures were

often confused with each other (Table 4), omission and commission errors for forested cover, rocks and bare soil, and meadows and pastures (pooled) were always < 12%. Based on these figures, we calculated a weighted Cohen's

FIGURE 5 Cumulative frequency distribution of area disturbed by wildfires, wind and snow, and avalanches, observed (black) and expected (red) under a negative exponential distribution of disturbed area. Data for events > 200 ha are not shown.



kappa (Cohen 1968) of 0.89. The resulting land cover classification showed that DPFs in 2011 were covered 13.6% by herbaceous vegetation and 0.8% by rocks or bare soil. Disturbed DPFs did not exhibit a significantly lower proportion of forested cover than nondisturbed ones (χ^2 test, $P < 0.05$). However, proportions of bare soil and rock, meadow and pasture, and forested pixels in both DPFs and total forest area differed significantly among disturbance agents ($P < 0.05$). Wildfire resulted in the highest rate of nonforested DPFs (Figure 6: 450 out of 630 ha, ie 42% of all DPFs), followed by avalanches (21%), *Zeiraphera* (20%), *Lymantria* (6%), and wind and snow (4%).

Generalized linear models of current functionality of disturbed DPFs had a low explanatory power (Table 5; deviance explained). However, even in the context of a noisy data set, some variables had a significant and consistent effect (Table 5 and *Supplemental Material*, Figures S5–S13; <http://dx.doi.org/10.1659/MRD-JOURNAL-D-15-00075.S1>). In conifer forests, distance from the disturbance edge was always negatively related (by 1–37% for every 100 m) to the probability of a DPF pixel being forested. Time elapsed since disturbance was always positively related to the probability of forested cover (by 0.1–1% per year). Among topographic variables, lower elevations and northerly aspects, when significant, were responsible for a more successful forest recovery after disturbances of all types. After wildfire, probability of forested cover dropped 2–4% for every 100 m increase in elevation. Aspect was the most important variable in 6 out of 9 models. Slope had a positive influence on forest

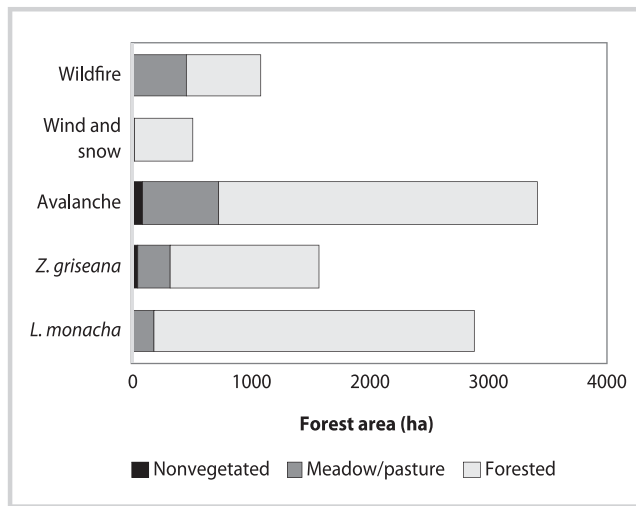
recovery after wind and snow, *L. monacha*, and avalanche disturbances (conifers only), and a negative influence after *Z. griseana* and fire disturbances (broadleaves only). A strong and positive influence of mean summer precipitation was found after crown fire in conifers, surface fire in broadleaves, and *L. monacha* disturbances. Post-disturbance water deficit (Standardized Precipitation Evapotranspiration Index) had a negative effect on recovery after fire (conifers only), but positive after wind and snow and *L. monacha* disturbance.

Discussion

Avalanches dominated the regional disturbance regime across all forests and in DPFs. Avalanches of all magnitudes from 1971 to 2010 covered 10% of regional forest area. Because regional avalanche data were not temporally explicit, it was impossible to assess return intervals and recurrence rates. Even assuming that annual avalanches represent a small fraction of the cumulative area disturbed, the high spatial fidelity of this disturbance (Patten and Knight 1994) implies that many thousands of hectares of DPFs are disturbed each year. The location of disturbed areas should be fairly constant from year to year.

The second most common disturbance agent was insects, in terms of both overall and yearly disturbed area. The period of analysis (1984–2006) included a *L. monacha* outbreak in the 1980s (Bottero et al 2013) and 2 *Z. griseana* outbreaks, 7 years apart (Esper et al 2007) with a duration

FIGURE 6 Area of currently designated DPFs classified into different land cover classes (year 2011) for each disturbance agent. Data used for the classification: Landsat scene LT51950282011263MOR00.



of 3 years each (Baltensweiler et al 1977). Insect disturbance had a very low recurrence, as the insects moved to adjacent areas from year to year. However, the area disturbed could be overestimated, because the Forest Service recorded only the general perimeter of the affected stands, and no estimate of disturbance severity exists. Defoliators were an important forest disturbance agent in the study region; their influence on forest structure may vary depending on outbreak duration and severity, but in the southern Alps these are seldom stand-replacing (Battisti 2008). Outbreaks react to climate change via the direct influence of temperature on insect reproduction and the indirect effects of the quantity and vigor of plant hosts (Esper et al 2007; Vanhanen et al 2007; Netherer and Schopf 2010; Haynes et al 2014), so that future dynamics are quite complex to predict.

Wildfires and wind are usually regarded as the most severe disturbance agents, especially in DPFs, due to their potential to be stand-replacing and to increase exposure to other natural hazards in their aftermath (Angst and Volz 2002; Sass et al 2012; Bebi et al 2015). However, in our study the overall area disturbed by wind/snow and wildfires combined was lower than that for either avalanches or insects; moreover, even without a direct

estimate of disturbance severity, we must assume that not all events were stand-replacing. While DPFs at risk from avalanches mostly protect roads (as people tend not to settle below avalanche-prone slopes), DPFs at risk from wildfires and wind protect buildings and towns. The higher vulnerability or value of the hazard target increases the risk posed by these disturbances even if they affect a smaller proportion of regional forests.

The nonconformity of the size distribution of the disturbances to a negative power law (Turcotte and Rundle 2002) suggests that large, infrequent disturbances (Turner 2010) are missing from the data set. However, the maximum area disturbed by wildfire was 400 ha, which is comparable to other heavily settled inner-Alpine regions with a similar fire regime (eg largest wildfire in Valais: 300 ha; Gimmi et al 2004) and is suggested to correspond to a 100-year return interval event (Moser et al 2010). These large fires occurred mostly after the year 2000. In the Alpine region, landscape fragmentation due to anthropogenic land use has prevented disturbance agents from spreading across larger areas, and disturbance suppression used to be put into practice for both wildfires and insect outbreaks (Faccoli et al 2010; Zumbrunnen et al 2012). During the study period, however, the combined effect of fuel buildup due to fire suppression, increased fuel continuity due to land abandonment (Piussi and Farrell 2000), and higher fire danger due to climate warming may have induced a shift toward an increased frequency of large fires (Castellnou and Miralles 2009; Valse et al 2014).

Conclusive evidence for disturbance regime shifts cannot be provided using our data set, which, despite being one of the longest available for multiagent disturbances in any European region (see also Hanewinkel et al 2008), has an insufficient time span to capture exceptional events with a return interval of 100 years or more. We think that this is why we found scarce evidence for disturbance recurrence—less than 0.3% of the disturbed area was disturbed by the same agent a second time in each of the subsequent years. (It should also be kept in mind that the literature lacks reference figures for “pristine” temperate mountain

TABLE 3 Percent of total forest area disturbed by one agent (throughout their respective period of available data; see Figure 3) that was subsequently disturbed by a second agent. Bold indicates recurrence of the same disturbance agent.

Agent 1	Agent 2			
	Wildfires	Wind and snow	<i>L. monacha</i>	<i>Z. griseana</i>
Wildfires	14.50	0.048	0.25	0.014
Wind and snow	0.11	4.67	No data	8.43
<i>L. monacha</i>	0.41	5.09	1.88	2.99
<i>Z. griseana</i>	0	0	No data	21.11

TABLE 4 Validation results for land cover classes assigned by maximum likelihood classes, computed for 200 points sampled randomly on the most recent Google Earth image.

Land cover class validated visually on Google Earth image	Land cover class classified by maximum likelihood algorithm				Omission error
	Forested	Meadow	Pasture	Rocks or bare soil	
Forested	36	1	3	0	0.100
Meadow	4	17	19	0	0.075
Pasture	1	5	33	1	
Rocks or bare soil	0	0	1	39	0.025
Commission error	0.122	0.068		0.025	

ecosystems.) *Z. griseana* was an exception, with a recurrence rate of 21%, probably due to the multiyear nature of the outbreak cycles (Baltensweiler and Rubli 1999) and the coarse delineation of disturbed areas by the Forest Service. Interactions between different disturbances were significant for wind and snow and insects. However, while there is an established literature on interactions between bark beetles and wind (Peltonen 1999; Bouget and Duelli 2004; Wermelinger 2004; Hanewinkel et al 2008; Temperli et al 2013), we could find no plausible mechanism involving defoliators, so we assume that the 2 disturbances simply occurred preferentially on similar sites, such as monospecific, dense spruce stands (Bejer 1988; Peltola et al 1999). Finally, wind/snow and wildfire did not significantly interact with each other within the period of analysis. Contrary to common assumptions (eg Myers and van Lear 1988), our data suggest that, at the regional scale, wind and snow damage does not have the potential to increase burn area. Increased dead fuel loads might not be sufficient by themselves to increase fire danger, especially if they do not create a sustained increase (in quantity and time) of fine fuels (Cannon et al 2014). Moreover, natural canopy gaps reduce leaf litter abundance, decreasing fuel availability and continuity for subsequent fires (O'Brien et al 2008).

All disturbances followed their expected gradients of topography (wildfires on drier sites and wind and snow on moister sites—Schindler et al 2009) and plant functional type (higher incidence of fire in broadleaf forests, which are closer to ignition sources and less subject to prolonged snow cover in winter, and of all other disturbances in conifer forests).

The analyzed variables may be used to parameterize past disturbance regimes for the forests of Aosta Valley. However, we feel that this is not yet possible for several reasons:

1. The analyzed time span is too short to describe a regime (compared to eg 100 years—Zumbrunnen et al 2009).
2. No estimate of disturbance severity is currently available, and the use of disturbed area alone can be

problematic, particularly for non-stand-replacing disturbances (Thom et al 2013).

3. The data set is heterogeneous in terms of disturbance origin (eg natural vs. anthropogenic wildfires) and forest communities (including everything from sub-alpine conifers to upland hardwood forest types, which are adapted to fundamentally different disturbance regimes—Keeley et al 2011; Pausas 2015).
4. The impact of human activities on disturbance regimes is pervasive, including forest management actions, disturbance suppression, and socioeconomic drivers of disturbance (eg fire ignitions). Further analysis of the intensity and change in time of human-induced fire forcing needs to be carried out to characterize the past and current disturbance regime of any given vegetation type.

Validation metrics made us quite confident in our current land cover classification; the size of Landsat pixels allowed us to detect unforested gaps of 0.09 ha, which are enough to reduce or cancel protection effectiveness (Schneebeli and Meyer-Grass 1993). However, we cannot rule out that such gaps were unforested even before disturbance, as disturbance perimeters were not sampled at such a fine spatial resolution.

The effect of disturbances on residual protection function was higher for wildfire (42% of DPF land disturbed by avalanches was classified as currently nonforested) and avalanches (21%), which reflects the stand-replacing nature of such disturbance agents, and may be related to other effects on the ecosystem that delay forest regeneration, such as removal or sterilization of soil, postdisturbance erosion, increased evaporation, and distance from the seed source (Neary et al 1999; Ice et al 2004; Certini 2005; Vacchiano et al 2014). Wind and snow and insect disturbances, on the contrary, were less severe and left a smaller proportion of DPFs without sufficient cover, likely due to the beneficial effect of disturbance legacies and moderate severity effects (Peterson and Pickett 1990; Ulanova 2000; Kuuluvainen and Kalmari 2003; Waldron et al 2013; Seidl et al 2014a).

For all disturbances, the probability of forest recovery was strongly dependent on time elapsed since

TABLE 5 Goodness of fit and standardized parameter estimates of generalized linear models for the probability of disturbed DPF pixels being classified as forested in 2011.

Model	Deviance explained	Distance from edge	Years since disturbance	Summer precipitation
Surface fire, conifers	17.40%	−0.384**	0.300**	0.049
Crown fire, conifers	13.70%	−0.377*	0.300	0.588**
Surface fire, broadleaves	6.40%	−0.159**	0.155*	0.524**
Crown fire, broadleaves	8.70%	0.153**	0.209**	−0.130**
Wind	16.60%	0.630**	1.226**	−0.170
Avalanche, conifers	11.40%	−0.037*	− ^{b)}	−0.108*
Avalanche, broadleaves	2.80%	0.051	−	−0.008
<i>L. monacha</i>	14.1%	−	0.118**	0.360**
<i>Z. griseana</i>	30.0%	−	0.095	−0.791

TABLE 5 Extended.

Model	Elevation	Cosine of aspect	SPEI ^{a)}	Slope
Surface fire, conifers	−0.447**	0.858**	0.223**	0.041
Crown fire, conifers	−0.511**	1.082**	0.610**	0.226
Surface fire, broadleaves	0.175**	0.019	−0.028	−0.319**
Crown fire, broadleaves	−0.502**	0.000	−0.100*	−0.305**
Wind	−0.065	0.407**	−0.887**	0.524**
Avalanche, conifers	−0.040*	0.833**	−	0.270**
Avalanche, broadleaves	−0.119*	0.424**	−	0.013
<i>L. monacha</i>	0.092**	0.765**	−0.378**	0.448**
<i>Z. griseana</i>	−0.135	1.413**	0.557	−1.877**

^{a)} Standardized Precipitation Evapotranspiration Index.

^{b)} Information on this variable was not available for this disturbance agent.

* $P < 0.05$; ** $P < 0.01$.

disturbance. Other important drivers included distance from the disturbance edge in conifer species, which are obligate seeders (eg Vacchiano et al 2015a), topography, and climate, with moister sites exhibiting faster recovery and/or less severe disturbances. Slope angle had a negative effect on forest recovery only in wildfires, where it can be conducive to more severe disturbance (Viegas 2004). Recovery models had a low explanatory power, probably due to the noise inherent in the data set (measurement error, unknown pre-disturbance ecosystem state) and to confounding factors, such as disturbance suppression and salvage logging, which are routinely carried out in the region. However, model results provide useful indications of the combinations of disturbance agent, vegetation, and environmental conditions that are most likely to slow the recovery of a forest's protective function and therefore should be

prioritized for assisted recovery of this important ecosystem service.

Conclusions

We provided a comprehensive overview of the recent history of different disturbance regimes and their interactions in forests of an Alpine region. The combination of this analysis with an approximation of DPF functionality, as has been done in this study, also provides insight into how DPFs are affected by different disturbance regimes and how they have recovered after disturbances.

This paper demonstrates a simple and universally applicable algorithm for assessing the effectiveness of DPFs at a regional scale based on remote-sensing data. A similar analysis can be carried out in all parts of the

world using institutional or open-access geographical data and publicly available Landsat imagery, and can be replicated at different spatial extents (eg the forest management unit) and points in time (eg immediately after a natural disturbance). Our method can provide land planners with a tool to prioritize the management of DPFs,

by indicating where restoration of their functionality (whether by mitigation measures such as temporary hazard barriers or by active ecological restoration) is most urgent. This is ever more relevant under the forecasted increase in natural disturbance frequency and severity due to climate change in mountain areas of Europe.

ACKNOWLEDGMENTS

The authors wish to thank Giancarlo Cesti and Mario Negro (Corpo Forestale, Regione Autonoma Valle d'Aosta) and Andrea Debernardi (Ufficio Neve e Valanghe, Regione Autonoma Valle d'Aosta) for data provision and local expertise, and Alessandra Bottero, Nicola Cossu, and Emanuele Sibona for geographic information system

and database work. The authors support the campaign #ricercaprecaria for the acknowledgement of worker's rights to non-permanent researchers in Italy and the petition for the increase of governmental funding to research in Italy (www.change.org/p/salviamo-la-ricerca-italiana).

REFERENCES

- Agee JK.** 1993. *Fire Ecology of Pacific Northwest Forests*. Washington, DC: Island Press.
- Angst C, Volz R.** 2002. A decision-support tool for managing storm-damaged forests. *Forest Snow and Landscape Research* 77:217–224.
- Aydin A, Dorren L.** 2010. Assessing the protective function of a rockfall-damaged forest stand using mean tree free distance in Kastamonu-Turkey, In: [no editor]. *The 1st International Symposium on Turkish & Japanese Environment and Forestry*. Proceedings Book Vol 1, [no place: no publisher], pp 127–138. http://akademikpersonel.duzce.edu.tr/aaydin/bildiri/aaydin11.07.2011_11.50.58bildiri.pdf; accessed on 23 December 2015.
- Baltensweiler W, Benz G, Bovey P, Delucchi V.** 1977. Dynamics of larch bud moth populations. *Annual Review of Entomology* 22(1):79–100.
- Baltensweiler W, Rubli D.** 1999. Dispersal: an important driving force of the cyclic population dynamics of the larch bud moth, *Zeiraphera diniana* Gn. *Forest Snow and Landscape Research* 74(1):1–153.
- Battisti A.** 2008. Forests and climate change—lessons from insects. *iForest* 1(1):1–5.
- Bebi P, Kienast F, Schönenberger W.** 2001. Assessing structures in mountain forests as a basis for investigating the forests' dynamics and protective function. *Forest Ecology and Management* 145(1):3–14.
- Bebi P, Kulakowski D, Rixen C.** 2009. Snow avalanche disturbances in forest ecosystems—State of research and implications for management. *Forest Ecology and Management* 257:1883–1892.
- Bebi P, Putallaz JM, Fankhauser M, Schmid U, Schwitter R, Gerber W.** 2015. Die Schutzfunktion in Windwurfflächen. *Schweizerische Zeitschrift für Forstwesen* 166(3):168–176.
- Bejer B.** 1988. The nun moth in European spruce forests. In: Berryman AA, editor. *Dynamics of Forest Insect Populations: Patterns, Causes, Implications*. New York, NY: Plenum, pp 211–231.
- Berger F, Rey F.** 2004. Mountain protection forests against natural hazards and risks: New French developments by integrating forests in risk zoning. *Natural Hazards* 33(3):395–404.
- Bergeron Y, Chen HY, Kenkel NC, Leduc AL, Macdonald SE.** 2014. Boreal mixedwood stand dynamics: Ecological processes underlying multiple pathways. *Forestry Chronicle* 90(2):202–213.
- Berretti R, Caffo L, Camerano P, De Ferrari F, Domaine A, Dotta A, Gottero F, Haudemand JC, Letey C, Meloni F, Motta R, Terzuolo PG.** 2006. *Selvicoltura nelle foreste di protezione. Esperienze e indirizzi gestionali in Piemonte e Valle d'Aosta*. Arezzo, Italy: Compagnia delle Foreste.
- Biancotti A, Bellardone G, Bovo S, Cagnazzi B, Giacomelli L, Marchisio C.** 1998. *Distribuzione regionale di piogge e temperature*. Turin, Italy: Regione Piemonte.
- Bolker B, Skaug H, Magnusson A, Nielsen A.** 2012. Getting started with the glmmADMB package. <http://glmmadmb.r-forge.r-project.org/glmmADMB.pdf>; accessed on 27 July 2015.
- Bottero A, Garbarino M, Long, JN, Motta, R.** 2013. The interacting ecological effects of large-scale disturbances and salvage logging on montane spruce forest regeneration in the western European Alps. *Forest Ecology and Management* 292:19–28.
- Bouget C, Duelli P.** 2004. The effects of windthrow on forest insect communities: A literature review. *Biological Conservation* 118: 281–299.
- Brand DG.** 1997. Criteria and indicators for the conservation and sustainable management of forests: progress to date and future directions. *Biomass and Bioenergy* 13:247–253.
- Brang P, Schönenberger W, Frehner M, Schwitter R, Thormann JJ, Wasser B.** 2006. Management of protection forests in the European Alps: An overview. *Forest Snow and Landscape Research* 80(1):23–44.
- Brosinger F, Tretter S.** 2009. Die Bergwaldoffensive. *LWF Aktuell* 71:4–5.
- Cannon JB, O'Brien JJ, Loudermilk EL, Dickinson MB, Peterson CJ.** 2014. The influence of experimental wind disturbance on forest fuels and fire characteristics. *Forest Ecology and Management* 330:294–303.
- Castellnou M, Miralles M.** 2009. The great fire changes in the Mediterranean. The example of Catalonia, Spain. *Crisis Response* 5(4):56–57.
- Certini G.** 2005. Effects of fire on properties of forest soils: A review. *Oecologia* 143(1):1–10.
- Chavez P.** 1996. Image-based atmospheric corrections—Revisited and improved. *Photogrammetric Engineering and Remote Sensing* 62:1025–1036.
- Chen HY, Vasiliuskas S, Kayahara GJ, Ilisson T.** 2009. Wildfire promotes broadleaves and species mixture in boreal forest. *Forest Ecology and Management* 257(1):343–350.
- Cohen J.** 1968. Weighted kappa: Nominal scale agreement provision for scaled disagreement or partial credit. *Psychological Bulletin* 70(4):213–220.
- Costantini EAC, Urbano F, L'Abate G.** 2004. *Soil regions of Italy*. Florence, Italy: Research Institute for Soil Study and Conservation (CRA-ISSDS).
- Covi S.** 2008. Sustainable protection forest along bodies of flowing water. *Schweizerische Zeitschrift für Forstwesen* 159:198–204.
- Crist EP, Ciccone RC.** 1984. Application of the tasseled cap concept to simulated thematic mapper data. *Photogrammetric Engineering and Remote Sensing* 50:343–352.
- Dorren LK, Berger F, Frehner M, Huber M, Kühne K, Métral R, Wasser B.** 2015. Das neue NalS: Anforderungsprofil Steinschlag. *Schweizerische Zeitschrift für Forstwesen* 166(1):16–23.
- Dorren LK, Berger F, Imeson AC, Maier B, Rey F.** 2004. Integrity, stability and management of protection forests in the European Alps. *Forest Ecology and Management* 195(1):165–176.
- Dorren LK, Berger F, le Hir C, Mermin E, Tardif P.** 2005. Mechanisms, effects and management implications of rockfall in forests. *Forest Ecology and Management* 215(1):183–195.
- Esper J, Buntgen U, Frank DC, Nievergelt D, Liebold A.** 2007. 1200 years of regular outbreaks in alpine insects. *Proceedings of the Royal Society of London B: Biological Sciences* 274(1610):671–679.
- Espirito-Santo FD, Gloor M, Keller M, Malhi Y, Saatchi S, Nelson B, Phillips OL.** 2014. Size and frequency of natural forest disturbances and the Amazon forest carbon balance. *Nature Communications* 5:3434.
- European Environment Agency.** 2014. Data and maps. Dataset. *Corine Land Cover 2006 seamless vector data*. <http://www.eea.europa.eu/data-and-maps/data/clc-2006-vector-data-version-3>; accessed on 27 July 2015.
- Faccoli M, Colombari F, Dal Pont C, Finozzi V, D'Ambros E, Battisti A.** 2010. Gravi infestazioni di bostrico acuminato in formazioni alpine di pino silvestre. *Forest@* 7(6):259–267.
- FAO (Food and Agriculture Organization).** 2000. *Global Forest Resources Assessment 2000—Main report*. Rome, Italy: FAO. www.fao.org/docrep/004/y1997e/y1997e00.htm; accessed on 27 July 2015.

- Footy GM, Campbell NA, Trodd NM, Wood TF.** 1992. Derivation and applications of probabilistic measures of class membership from the maximum likelihood classification. *Photogrammetric Engineering and Remote Sensing* 58:1335–1341.
- Frehner M, Wasser B, Schwitler R.** 2005. *Nachhaltigkeit und Erfolgskontrolle im Schutzwald. Wegleitung für Pflegemassnahmen in Wäldern mit Schutzfunktion, Vollzug Umwelt.* Bern, Switzerland: Bundesamt für Umwelt, Wald und Landschaft.
- Gimmi U, Bürgi M, Wohlgemuth T.** 2004. Wie oft brannte der Walliser Wald im 20. Jahrhundert? *Schweizerische Zeitschrift für Forstwesen* 155(10): 437–440.
- Gonthier P, Brun F, Lione G, Nicolotti G.** 2012. Modelling the incidence of *Heterobasidion annosum* butt rots and related economic losses in alpine mixed naturally regenerated forests of northern Italy. *Forest Pathology* 42(1):57–68.
- Gonthier P, Giordano L, Nicolotti G.** 2010. Further observations on sudden diebacks of Scots pine in the European Alps. *Forestry Chronicle* 86(1): 110–117.
- Hall DB.** 2000. Zero-inflated Poisson and binomial regression with random effects: A case study. *Biometrics* 56:1030–1039.
- Hanewinkel M, Breidenbach J, Neeff T, Kublin E.** 2008. Seventy-seven years of natural disturbances in a mountain forest area—the influence of storm, snow, and insect damage analysed with a long-term time series. *Canadian Journal of Forest Research* 38(8):2249–2261.
- Hardisky MA, Lemas V, Smart RM.** 1983. The influence of soil salinity, growth form, and leaf moisture on the spectral reflectance of *Spartina alternifolia* canopies. *Photogrammetric Engineering and Remote Sensing* 49:77–83.
- Haynes KJ, Allstadt AJ, Klimetzek D.** 2014. Forest defoliator outbreaks under climate change: Effects on the frequency and severity of outbreaks of five pine insect pests. *Global Change Biology* 20:2004–2018.
- Healy SP, Cohen WB, Zhiqiang Y, Krankina ON.** 2005. Comparison of tasseled cap-based Landsat data structures for use in forest disturbance detection. *Remote Sensing of Environment* 97:301–310.
- Hijmans RJ, Cameron SE, Parra JL, Jones PG, Jarvis A.** 2005. Very high resolution interpolated climate surfaces for global land areas. *International Journal of Climatology* 25(15):1965–1978.
- Holling CS.** 1973. Resilience and stability of ecological systems. *Annual Review of Ecology and Systematics* 4:1–23.
- Ice GG, Neary DG, Adams PW.** 2004. Effects of wildfire on soils and watershed processes. *Journal of Forestry* 102(6):16–20.
- Ilisson T, Chen HY.** 2009. The direct regeneration hypothesis in northern forests. *Journal of Vegetation Science* 20(4):735–744.
- INFC [Nazionale delle Foreste e dei Serbatoi Forestali di Carbonio].** 2007. *Le stime di superficie.* Trento, Italy: Istituto Sperimentale per l'Assessment Forestale e per l'Apicoltura (ISAF).
- Ives JD, Mears AI, Carrara PE, Bovis MJ.** 1976. Natural hazards in mountain Colorado. *Annals of the Association of American Geographers* 66(1): 129–144.
- Keeley JE, Pausas JG, Rundel PW, Bond WJ, Bradstock RA.** 2011. Fire as an evolutionary pressure shaping plant traits. *Trends in Plant Science* 16(8):406–411.
- Korup O, Clague JJ.** 2009. Natural hazards, extreme events, and mountain topography. *Quaternary Science Reviews* 28(11):977–990.
- Kuuluvainen T, Kalmari R.** 2003. Regeneration microsites of *Picea abies* seedlings in a windthrow area of a boreal old-growth forest in southern Finland. *Annales Botanici Fennici* 40:401–413.
- Lopez Garcia MJ, Caselles V.** 1991. Mapping burns and natural reforestation using thematic mapper data. *Geocarto International* 6:31–37.
- Lunardi S, Freppaz M, Debernardi A, Segor V.** 2009. Il nuovo catasto valanghe in Valle d'Aosta. *Neve e Valanghe* 66:16–23.
- Malamud BD, Moren G, Turcotte DL.** 1998. Forest fires: An example of self-organized critical behavior. *Science* 281(5384):1840–1842.
- Manfred Project.** 2013. Management strategies to adapt alpine space forests to climate change risks. WebGIS-Biotic damages. http://servizi.terraria.com/manfredDamages/Dev_manfred.html?factor=biotic; accessed on 27 July 2015.
- Marzano R, Lingua E, Garbarino M.** 2012. Post-fire effects and short-term regeneration dynamics following high-severity crown fires in a Mediterranean forest. *iForest* 5(3):93–100.
- MCPFE [Ministerial Conference on the Protection of Forests in Europe].** 2002. *MCPFE Assessment Guidelines for Protected and Protective Forest and Other Wooded Land in Europe as adopted by the MCPFE Expert Level Meeting.* Vienna, Austria: MCPFE.
- Meloni F, Lingua E, Motta R.** 2006. Analisi della funzione protettiva delle foreste: L'esempio della "Carta delle foreste di protezione diretta della Valle d'Aosta." *Forest@* 3(3):420–425.
- Moser B, Temperli C, Schneiter G, Wohlgemuth T.** 2010. Potential shift in tree species composition after interaction of fire and drought in the Central Alps. *European Journal of Forest Research* 129(4):625–633.
- Motta R, Haudemand JC.** 2000. Protective forests and silvicultural stability: An example of planning in the Aosta valley. *Mountain Research and Development* 20(2):180–187.
- Myers RK, van Lear DH.** 1998. Hurricane–fire interactions in coastal forests of the south: A review and hypothesis. *Forest Ecology and Management* 103:265–276.
- Neary DG, Klopatek CC, DeBano LF, Ffolliott PF.** 1999. Fire effects on belowground sustainability: A review and synthesis. *Forest Ecology and Management* 122(1):51–71.
- Netherer S, Schopf A.** 2010. Potential effects of climate change on insect herbivores in European forests—General aspects and the pine processionary moth as specific example. *Forest Ecology and Management* 259(4): 831–838.
- O'Brien JJ, Hiers JK, Callahan MA, Mitchell RJ, Jack SB.** 2008. Interactions among overstory structure, seedling life-history traits, and fire in frequently burned neotropical pine forests. *Ambio* 37:542–547.
- O'Hara KL.** 2006. Multiaged forest stands for protection forests: Concepts and applications. *Forest Snow and Landscape Research* 80(1):45–55.
- Pasquetta E, Negro M.** 2007. La tordeuse grise du mélèze. *L'informatore Agricolo* 23:32–33.
- Patten RS, Knight DH.** 1994. Snow avalanches and vegetation pattern in cascade canyon, Grand Teton National Park, Wyoming, USA. *Arctic and Alpine Research* 1:35–41.
- Pausas JG.** 1999. Response of plant functional types to changes in the fire regime in Mediterranean ecosystems: A simulation approach. *Journal of Vegetation Science* 10(5):717–722.
- Pausas JG.** 2015. Bark thickness and fire regime. *Functional Ecology* 29(3):315–327.
- Peltola H, Kellomäki S, Väisänen H, Ikonen VP.** 1999. A mechanistic model for assessing the risk of wind and snow damage to single trees and stands of Scots pine, Norway spruce, and birch. *Canadian Journal of Forest Research* 29(6):647–661.
- Peltonen M.** 1999. Windthrows and dead-standing trees as bark beetle breeding material at forest-clearcut edge. *Scandinavian Journal of Forest Research* 14(6):505–511.
- Peterson CJ, Pickett STA.** 1990. Microsite and elevational influences on early forest regeneration after catastrophic windthrow. *Journal of Vegetation Science* 1:657–662.
- Pezzatti GB, Zumbrennen T, Bürgi M, Ambrosetti P, Conedera M.** 2013. Fire regime shifts as a consequence of fire policy and socio-economic development: An analysis based on the change point approach. *Forest Policy and Economics* 29:7–18.
- Piussi P, Farrell EP.** 2000. Interactions between society and forest ecosystems: Challenges for the near future. *Forest Ecology and Management* 132(1):21–28.
- R Core Team.** 2015. *R: A Language and Environment for Statistical Computing.* Vienna, Austria: R Foundation for Statistical Computing.
- Rock BN, Vogelmann JE, Williams DL, Vogelmann AF, Hoshizaki T.** 1986. Remote detection of forest damage. *BioScience* 36(7):439–445.
- Rouse JW, Haas RH, Schell JA, Deering DW, Harlan JC.** 1973. *Monitoring the Vernal Advancement and Retrogradation (greenwave effect) of Natural Vegetation.* Type III Final Report. Greenbelt MD: NASA Goddard Space Flight Center.
- Sablonier R.** 1995. Waldschutz, Naturgefahren und Waldnutzung in der mittelalterlichen Innerschweiz. *Schweizerische Zeitschrift für Forstwesen* 146(8):581–596.
- Sass O, Heel M, Leistner I, Stöger F, Wetzel, KF, Friedmann A.** 2012. Disturbance, geomorphic processes and recovery of wildfire slopes in North Tyrol. *Earth Surface Processes and Landforms* 37(8):883–894.
- Sass O, Oberlechner M.** 2012. Is climate change causing increased rockfall frequency in Austria? *Natural Hazards and Earth System Science* 12(11):3209–3216.
- Scheffer M, Carpenter SR, Lenton TM, Bascompte J, Brock W, Dakos V, van de Koppel J, van de Leemput IA, Levin SA, van Nes EH, Pascual M, Vandermeer J.** 2012. Anticipating critical transitions. *Science* 338(6105):344–348.
- Schindler D, Grebhan K, Albrecht A, Schönborn J.** 2009. Modelling the wind damage probability in forests in Southwestern Germany for the 1999 winter storm 'Lothar.' *International Journal of Biometeorology* 53(6):543–554.
- Schneebeil M, Meyer-Grass M.** 1993. Avalanche starting zones below the timber line. Structure of forest. In: *Proceedings of the 1992 International Snow Science Workshop, Breckenridge, Colorado, USA.* Boleman, MT: International Snow Science Workshop (ISSW), pp 176–181.

- Seidl R, Rammer W, Spies TA.** 2014a. Disturbance legacies increase the resilience of forest ecosystem structure, composition, and functioning. *Ecological Applications* 24(8):2063–2077.
- Seidl R, Schelhaas MJ, Rammer W, Verkerk PJ.** 2014b. Increasing forest disturbances in Europe and their impact on carbon storage. *Nature Climate Change* 4(9):806–810.
- Shimamura M, Togari A.** 2006. Railway shelter-woods in Japan. *Forest Snow and Landscape Research* 80(1):129–134.
- Sousa WP.** 1984. The role of disturbance in natural communities. *Annual Review of Ecology and Systematics* 15:353–391.
- Teich M, Bartelt P, Grêt-Regamey A, Bebi P.** 2012. Snow avalanches in forested terrain: Influence of forest parameters, topography, and avalanche characteristics on runout distance. *Arctic, Antarctic, and Alpine Research* 44(4):509–519.
- Teillet PM, Guindon B, Goodenough DG.** 1982. On the slope-aspect correction of multispectral scanner data. *Canadian Journal of Remote Sensing* 8(2): 84–106.
- Temperli C, Bugmann H, Elkin C.** 2013. Cross-scale interactions among bark beetles, climate change, and wind disturbances: A landscape modeling approach. *Ecological Monographs* 83(3):383–402.
- Thom D, Seidl R, Steyrer G, Krehan H, Formayer H.** 2013. Slow and fast drivers of the natural disturbance regime in Central European forest ecosystems. *Forest Ecology and Management* 307:293–302.
- Turcotte DL, Rundle JB.** 2002. Self-organized complexity in the physical, biological, and social sciences. *Proceedings of the National Academy of Sciences* 99(Suppl 1):2463–2465.
- Turner MG.** 2010. Disturbance and landscape dynamics in a changing world. *Ecology* 91(10):2833–2849.
- Turner MG, Romme WH, Gardner RH, O'Neill RV, Kratz TK.** 1993. A revised concept of landscape equilibrium: Disturbance and stability on scaled landscapes. *Landscape Ecology* 8(3):213–227.
- Ulanova NG.** 2000. The effects of windthrow on forests at different spatial scales: A review. *Forest Ecology and Management* 135(1):155–167.
- Vacchiano G, Lonati M, Berretti R, Motta R.** 2015a. Drivers of *Pinus sylvestris* L. regeneration following small, high-severity fire in a dry, inner-alpine valley. *Plant Biosystems* 149(2):354–363.
- Vacchiano G, Maggioni M, Perseghin G, Motta R.** 2015b. Effect of avalanche frequency on forest ecosystem services in a spruce–fir mountain forest. *Cold Regions Science and Technology* 115:9–21.
- Vacchiano G, Stanchi S, Marinari G, Ascoli D, Zanini E, Motta R.** 2014. Fire severity, residuals and soil legacies affect regeneration of Scots pine in the Southern Alps. *Science of the Total Environment* 472:778–788.
- Valese E, Conedera M, Held AC, Ascoli D.** 2014. Fire, humans and landscape in the European Alpine region during the Holocene. *Anthropocene* 6:63–74.
- van Beek R, Cammeraat E, Andreu V, Mickovski SB, Dorren L.** 2008. Hillslope processes: Mass wasting, slope stability and erosion. In: Norris JE, Stokes A, Mickovski SB, Cammeraat E, van Beek R, Nicoll BC, Achim A, editors. *Slope Stability and Erosion Control: Ecotechnological Solutions*. Amsterdam, the Netherlands: Springer, pp 17–64.
- Vanhanen H, Veteli TO, Paivinen S, Kellomaki S, Niemela P.** 2007. Climate change and range shifts in two insect defoliators: Gypsy moth and nun moth—A model study. *Silva Fennica* 41(4):621–638.
- Vicente-Serrano SM, Beguería S, López-Moreno JJ.** 2010. A multiscalar drought index sensitive to global warming: The standardized precipitation evapotranspiration index. *Journal of Climate* 23(7):1696–1718.
- Viegas DX.** 2004. Slope and wind effects on fire propagation. *International Journal of Wildland Fire* 13(2):143–156.
- Viglietti D, Letey S, Motta R, Maggioni M, Freppaz M.** 2010. Snow avalanche release in forest ecosystems: A case study in the Aosta Valley Region (NW-Italy). *Cold Regions Science and Technology* 64(2):167–173.
- Viglietti D, Maggioni M, Bruno E, Zanini E, Freppaz M.** 2013. Snow gliding and loading under two different forest stands: A case study in the north-western Italian Alps. *Journal of Forestry Research* 24(4):633–642.
- Waldron K, Ruel JC, Gauthier S.** 2013. Forest structural attributes after windthrow and consequences of salvage logging. *Forest Ecology and Management* 289:28–37.
- Wehrli A, Brang P, Maier B, Duc P, Binder F, Lingua E, Ziegner K, Kleemayr K, Dorren L.** 2007. Schutzwaldmanagement in den Alpen: Eine Übersicht. *Schweizerische Zeitschrift für Forstwesen* 158(6):142–156.
- Weiss G.** 2000. Evaluation of policy instruments for protective forest management in Austria. *Forest Policy and Economics* 1(3):243–255.
- Wermelinger B.** 2004. Ecology and management of the spruce bark beetle *Ips typographus*—A review of recent research. *Forest Ecology and Management* 202(1):67–82.
- White PS, Pickett STA.** 1985. Natural disturbance and patch dynamics: An introduction. In: Pickett STA, White PS, editors. *The Ecology of Natural Disturbance and Patch Dynamics*. New York, NY: Academic Press, pp 3–13.
- Zagas TD, Raptis DI, Zagas DT.** 2011. Identifying and mapping the protective forests of southeast Mt. Olympus as a tool for sustainable ecological and silvicultural planning, in a multi-purpose forest management framework. *Ecological Engineering* 37(2):286–293.
- Zumbrunnen T, Bugmann H, Conedera M, Bürgi M.** 2009. Linking forest fire regimes and climate—A historical analysis in a dry inner alpine valley. *Ecosystems* 12(1):73–86.
- Zumbrunnen T, Menéndez P, Bugmann H, Conedera M, Gimmi U, Bürgi M.** 2012. Human impacts on fire occurrence: A case study of hundred years of forest fires in a dry alpine valley in Switzerland. *Regional Environmental Change* 12(4):935–949.
- Zumbrunnen T, Pezzaatti GB, Menéndez P, Bugmann H, Bürgi M, Conedera M.** 2011. Weather and human impacts on forest fires: 100 years of fire history in two climatic regions of Switzerland. *Forest Ecology and Management* 261(12):2188–2199.

Supplemental material

FIGURES S1–S4 Relative frequency of each disturbance agent in DPFs by elevation (S1), slope (S2), aspect (S3), and functional plant type (S4).

FIGURES S5–S13 Mean effect size of individual variables on probability of disturbed pixels being classified as forested in 2011 after disturbance from surface fire in conifers (S5), crown fire in conifers (S6), surface fire in broadleaves (S7), crown fire in broadleaves (S8), wind and snow (S9), avalanche in conifers (S10), avalanche in broadleaves (S11), *Z. griseana* (S12), and *L. monacha* (S13).

All found at DOI: 10.1659/MRD-JOURNAL-D-15-00075.S1 (808 KB PDF).