



## **Trees in the Upper Treeline Ecotone in the Polar Urals: Centuries-Old Change and Spatial Patterns**

Authors: Fomin, Valery V., Mikhailovich, Anna P., and Shiyatov, Stepan G.

Source: Mountain Research and Development, 40(2)

Published By: International Mountain Society

URL: <https://doi.org/10.1659/MRD-JOURNAL-D-20-00002.1>

---

BioOne Complete ([complete.BioOne.org](https://complete.BioOne.org)) is a full-text database of 200 subscribed and open-access titles in the biological, ecological, and environmental sciences published by nonprofit societies, associations, museums, institutions, and presses.

Your use of this PDF, the BioOne Complete website, and all posted and associated content indicates your acceptance of BioOne's Terms of Use, available at [www.bioone.org/terms-of-use](https://www.bioone.org/terms-of-use).

Usage of BioOne Complete content is strictly limited to personal, educational, and non - commercial use. Commercial inquiries or rights and permissions requests should be directed to the individual publisher as copyright holder.

---

BioOne sees sustainable scholarly publishing as an inherently collaborative enterprise connecting authors, nonprofit publishers, academic institutions, research libraries, and research funders in the common goal of maximizing access to critical research.

# Trees in the Upper Treeline Ecotone in the Polar Urals: Centuries-Old Change and Spatial Patterns

Valery V. Fomin<sup>1,2\*</sup>, Anna P. Mikhailovich<sup>3</sup>, and Stepan G. Shiyatov<sup>2</sup>

\* Corresponding author: fomval@gmail.com

<sup>1</sup> GIS-Technologies Research Laboratory in Ecology and Forest Sciences, Ural State Forest Engineering University, Sibirskiy Trakt 37, 620100 Yekaterinburg, Russian Federation

<sup>2</sup> Laboratory of Dendrochronology, Institute of Plant and Animal Ecology, 8 Marta Street 202, 620144 Yekaterinburg, Russian Federation

<sup>3</sup> Department of Physical Methods and Devices for Quality Control, Ural Federal University, Mira Street 19, 620002 Yekaterinburg, Russian Federation

© 2020 Fomin et al. This open access article is licensed under a Creative Commons Attribution 4.0 International License (<http://creativecommons.org/licenses/by/4.0/>). Please credit the authors and the full source.



Woody vegetation at the upper limit of its growth is a sensitive indicator of climate change. The aim of this study is to provide an analysis of the centuries-old spatiotemporal dynamics of larch trees at the upper limit

of their growth (mountain massif Rai-Iz, Polar Urals, Russia). We used a ground-based method of mapping the remnants of trees that grew in the study area and died during the Little Ice Age. Aerial photographs from the 1960s and high-spatial-resolution satellite images from 2015 were used as data sources to define the locations of trees. Maps of the forest-tundra phytocoenochoras (areas of the terrain that are relatively homogeneous for one or more components of vegetation and/or other indicators) were

created using a modified method of boundary detection between forest parcels with different stand densities. The proposed method of boundary detection between the main types of phytocoenochoras allowed us to identify a 15% total increase in areas of closed and open forest and areas with sparse tree growth, as well as a decrease in areas of tundra with single trees over these last decades. Using our spatiotemporal analysis of forest-tundra demographics over the last 50 years, we found that the number of trees in the ecotone had doubled. However, modern trees have not yet reached the areas occupied by trees in the past.

**Keywords:** boundary detection; climate-driven shift; Polar Urals; upper treeline ecotone; spatiotemporal dynamics.

**Peer-reviewed:** April 2020 **Accepted:** May 2020

## Introduction

Plants located at their upper and/or northern range limits are sensitive to even small changes in climatic conditions; therefore, many highland and northern territories are used as monitoring sites to assess the early response of biota to climate change (Shiyatov 1993; Kullman 2002, 2007, 2016; Camarero and Gutiérrez 2004; Dufour-Tremblay et al 2012; Hellmann et al 2016; Pellizzari et al 2017; Chhetri 2018). Many studies indicate an upward shift of the treeline in the mountains of different regions of the world (Harsch et al 2009; Kullman 2012; Hagedorn et al 2014; Sanchez-Salguero et al 2018; Mamet et al 2019). At the same time, comparative analyses of changes in the boundaries of woody vegetation and the speed of these changes show that these vary according to region, for various reasons. For example, regions may differ in (1) species composition, age, and morphological structure of woody vegetation, as well as soil type and hydrological conditions; (2) heterogeneity of climate change and quality of woody vegetation data sources, which also differ on a spatial and temporal scale; and (3) methodologies used. A search for past boundaries of woody vegetation cover is not an easy task, especially for time intervals from half a century to several centuries ago, because there is often no information about where trees have previously grown due to rapid wood decomposition.

A unification of approaches and the development of methods for processing and analyzing data would reduce subjectivity and increase the degree of automation in determining the location of vegetation boundaries.

In most cases, the vegetation units revealed by a researcher are separated by transition zones called ecotones, as well as ecolines (Hufkens et al 2009). Ecolines are used to emphasize gradual changes between plant communities due to a gradient in at least one important ecological factor (Yarrow and Marín 2007). The appearance of sharp boundaries is a special case of the ecotone concept and, as a rule, is associated with contrasting environmental conditions (Hofgaard and Rees 2008). However, even studies that adhere to the concept of discrete vegetation cover accept that the borders distinguished are rarely sharp (Grossman et al 1994).

The characteristics of an ecotone are extremely dependent on the level of detail at which it is studied (Gosz 1993; Camarero and Gutiérrez 2000; Fortin et al 2000; Hufkens et al 2009). This is due to the properties of vegetation, which form a complex multiscale phenomenon. Considering this feature in environmental studies, including through abstraction, is crucial to understanding the patterns and processes associated with vegetation (Bateson 1979; Grossman et al 1994; Holtmeier and Broll 2017).

Publications summarizing the terms denoting the types of forest boundaries appear regularly (Hustich 1953;

Gorchakovskiy and Shiyatov 1985; Körner 1998; Holtmeier 2003; Smith et al 2003; Chiu et al 2014; Bryn and Potthoff 2018). However, Holtmeier (2003) found that it was difficult to provide definitions that would correspond to all aspects of their use. Therefore, currently it is advisable to use the following approach: avoid trying to unify the use of the term “forest boundary” but attempt, in each case, to clarify what a scientist means when using this term. The improvement of methodological approaches to the collection, processing, and analysis of woody vegetation data, and obtaining new data and results, would help to bring positions closer together or resolve differences in determining boundaries between plant communities and assessing their spatial position.

Usually, researchers use the following characteristics to separate forest communities from nonforest communities: distance between trees (Shiyatov et al 2005), tree height (Kullman 1991), crown density and tree cover (Bakker et al 2008; Kharuk et al 2010), degree of tree root density (Sannikov et al 2012), trunk and crown shape (Szeicz and Macdonald 1995), forest islands (Bryn 2008), or various combinations of these criteria (Camarero et al 2006; Wiegand et al 2006). The threshold values of these characteristics used by different authors may vary (Harsch and Bader 2011).

Differences in terminology and semantic content of terms lead to misunderstandings among researchers and can become an obstacle in comparing the results obtained by different authors. For example, this occurs when using changes in the spatial position of the treeline as an indicator of the response of woody vegetation to climate change. Such a comparison cannot be implemented for different areas if the publications do not specify what their authors understood as the treeline (Chiu et al 2014). At the same time, many researchers believe that the term “treeline” or “tree line” is intuitive and does not need to be explained. Jobbágy and Jackson (2000) compared treeline data presented in various publications and were forced to exclude from consideration results in which there was no clear definition of this term. This approach is appropriate, because the characteristics and their threshold values necessary for identifying boundaries differ, as does understanding of what the treeline is. The term “treeline” can refer to a transition zone (ecotone) extending from the boundary of a closed forest to the physiological limit of tree growth (Chiu et al 2014; Holtmeier and Broll 2017), one of the boundaries of this transition zone (Smith et al 2003), or a line of intermediate position between the upper limit of the closed forest and the upper limit of the growth of tree species. It can also refer to a line that connects the highest patches of forest at a similar position in relief, for example, for a series of slopes of the same exposure (Körner 1998).

The presence of a boundary definition is a necessary but insufficient condition to avoid ambiguity. Guided only by a definition, 2 researchers can draw boundaries in different ways. To unambiguously determine the location of a boundary, it is necessary to describe the method of identifying this line, a specific sequence of steps that allow any researcher to obtain reproducible results. The determination of the location of ecotones and their boundaries is always associated with the identification of spatially homogeneous areas of vegetation cover and the areas that separate them.

The purpose of this paper is twofold: (1) to provide an analysis of the spatial distribution of trees on the southeast macroslope of the Rai-Iz mountain massif in the Polar Urals in the second half of the 20th and early 21st centuries, as well as the remnant trees that died in the study area during the Little Ice Age, and (2) to give a quantitative assessment of changing areas of different types of phytocoenochoras over the last 50 years. The maps used to do so were created based on an earlier method developed for the automated determination of the boundaries between vegetation units. The method allows a researcher to increase the degree of objectivity in the allocation of the boundaries, and it is applicable for the detection of treelines.

## Material and methods

### Study area

The research area (66°30′28″–66°47′42″N, 65°49′28″–65°33′59″E) is located on the southeast macroslope of the Rai-Iz mountain massif (Polar Urals, Russia). The shaded relief of the study area and the adjacent territory is shown in Figure 1. The maximum elevation of the terrain in this area is 312 masl. The Rai-Iz mountain massif is composed of peridotite and gabbro bedrock. The surface of the region was formed under the influence of glaciers during the last global glaciation. Glacial deposits have formed a large number of ridges, mounds, and depressions. There are many streams and small lakes within this region. The eastern boundary of the study area lies on the left lateral moraine. The western boundary follows the course of the Engaiu River. The right bank of this river is formed by a right lateral moraine. Pure larch forests (*Larix sibirica* Ledeb.) dominate the woody vegetation within the upper limit of the ecotone (Shiyatov et al 2005). In the lower part of the ecotone, there are larch forests with single trees of *Picea obovata* Ledeb. and *Betula tortuosa* Ledeb.

### Landscape photography

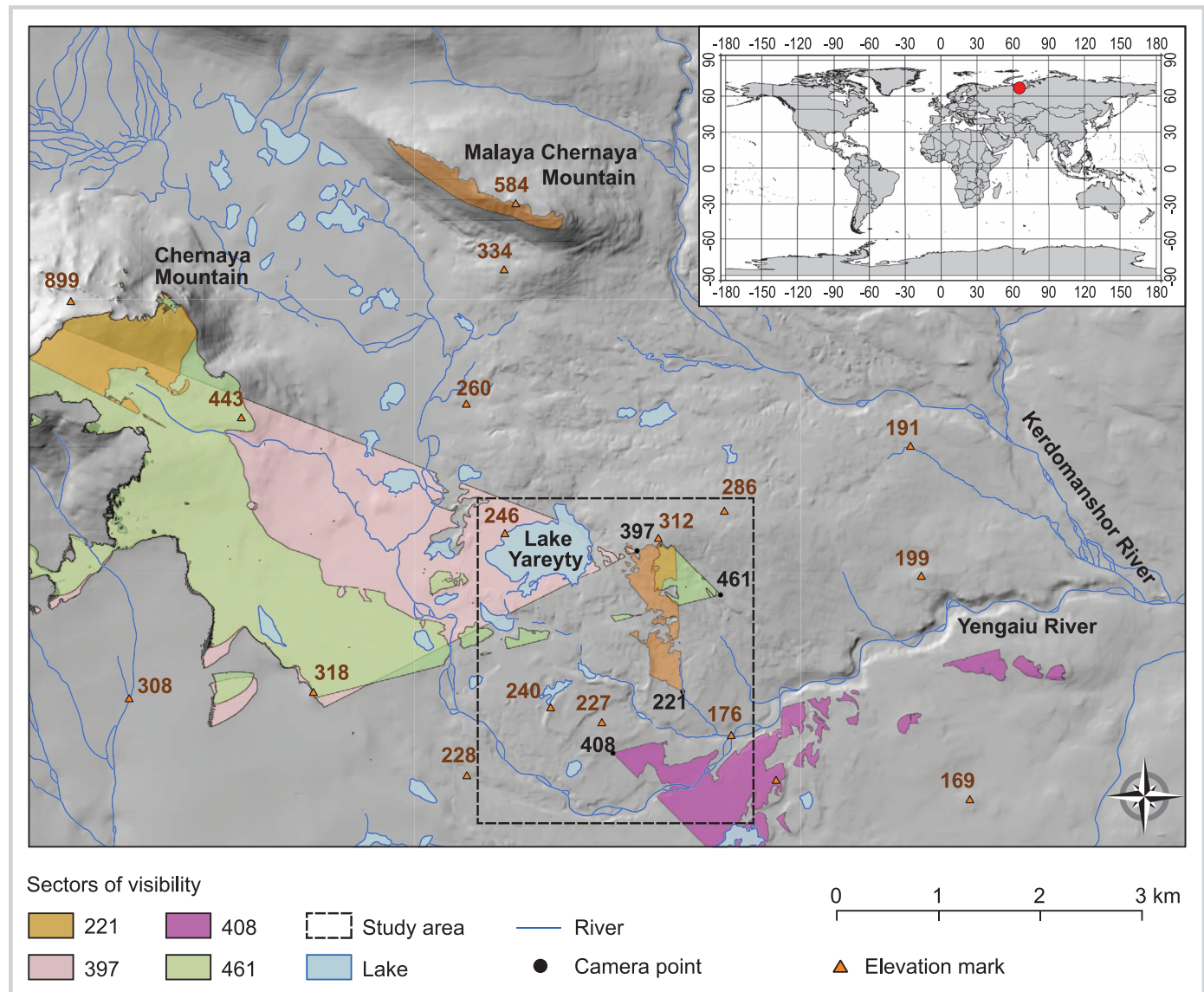
The camera points from which ground-based landscape photographs were taken in 1961–1962 and 2016 are shown in Figure 1. Repeated landscape photographs taken in these years are shown in Figure 2. For the analysis of landscape images, we used our previously developed method, which allows us to merge a photo and its sector of visibility (Fomin et al 2015; Mikhailovich et al 2016). The sector of visibility corresponds to the area of the terrain that is visible from the camera point in a given direction. The camera point is located at the top of the sector. The right and left sides of the sector, relative to the point from which the photograph was taken, correspond to the right and left sides of the photo. Each pair of repeated photographs presented in Figure 2 corresponds to sectors of visibility created based on a digital elevation model without considering the location of large objects or woody vegetation.

### Remote-sensing and field data processing and analysis

Halftone aerial photographs from 1962 and 1964 for the eastern and western parts of the study region and satellite images from 2015 (Yandex Maps 2020) were used to identify the trees. These images were georeferenced using the QGIS geographic information system (QGIS 2020). Our studies



**FIGURE 1** The shaded relief of the study area (dashed rectangle) and the adjacent territory, with camera points and their sectors of visibility.



defined coordinates of trees on the ground and measured their biometric parameters in 9 forest plots (Fomin et al 2019). This verified that the spatial resolution of aerial and satellite images reliably distinguished the same trees on both types of images (*Supplemental material*, Figure S1: <https://doi.org/10.1659/MRD-JOURNAL-D-20-00002.1.S1>). According to the analysis of the tree recognition results by 4 operators, trees that are more than 4 m tall could be identified. Based on the data obtained on the plots, the average area of tree crowns, according to the class of tree heights of 4–5 to 9–10 m, was within a range of 3.6 to 11.7 m<sup>2</sup>. When identifying trees in the images, both the size of the crown and the height of the tree (the shadow of which may be clearly distinguished) are important.

We created vector point layers, each point of which corresponds to the location of a tree at the beginning of the 1960s and in 2015. Landscape photographs were used to illustrate the effects of the appearance of woody vegetation in the forest–tundra and tundra and helped us to identify trees in some parts of the study area when we were analyzing the halftone aerial images.

### Tree remnant mapping

The climatic conditions in the Polar Urals contributed to the preservation of fragments of trunks and tree roots that grew in the study area and died during medieval cooling (Shiyatov 2003; Mazepa 2005; Hagedorn et al 2014; Shiyatov and Mazepa 2015). The duration of this cooling period, also known as the Little Ice Age, was from the late 13th to the late 19th centuries (Briffa et al 1995; Shiyatov 2003; Oosthoek 2018). The remnants of large trees that died during this period can be seen in some of the landscape photographs (Figure 2). Dendrochronological analysis of tree remnants and analysis of their location on several elevation transects passing through the ecotone (from the closed forest to the tundra with individual trees) in the study area between Yengaiu and Kerdomanshor rivers (Figure 1) were performed by Shiyatov and Mazepa (Shiyatov 1993, 2003; Mazepa 2005; Shiyatov and Mazepa 2015).

We carried out fieldwork to determine the location of tree remnants in the upper part of the ecotone in 2016 and 2017 (Figure 3). We defined the position of 7860 tree

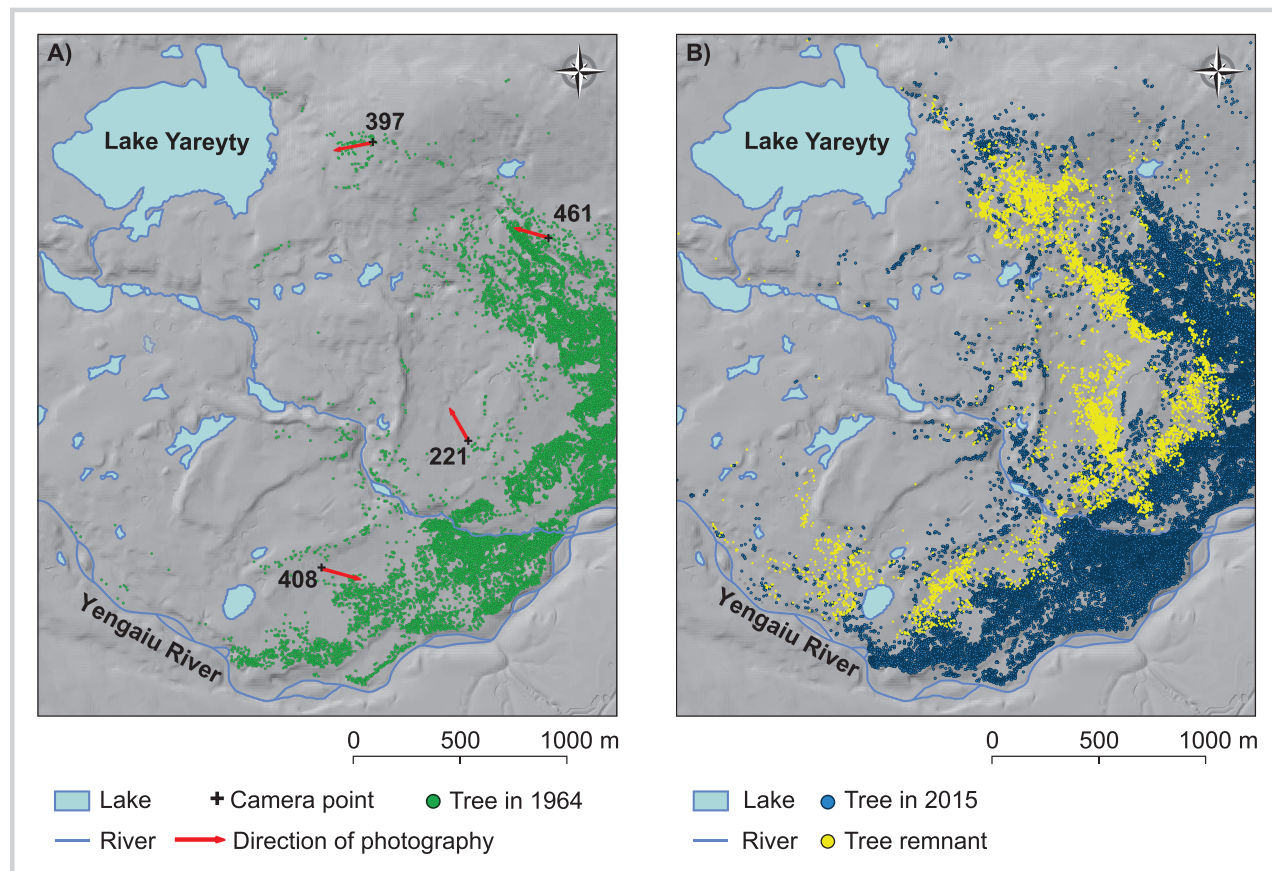


**FIGURE 2** Repeated landscape photographs from camera points 221 (A and B), 397 (C and D), 408 (E and F), and 461 (G and H). Images in the left and right columns were taken by SG Shiyatov in the early 1960s (C and G in 1960, A in 1961, and E in 1962) and AP Mikhailovich in 2016, respectively.





**FIGURE 3** Spatial distribution of trees in the early 1960s (A) and in 2015 with tree remnants (B). The red arrows indicate the direction from which the pictures were taken.



remnants. The location of each remnant was determined using a Etrex 10 global positioning system receiver (Garmin). The spatial error in positioning for this device is less than 3 m. The choice of the ground-based method of mapping tree remnants instead of remote-sensing methods, for example, using a small aircraft, arose from the need to search for fragments of dead trees in areas with dense cover of dwarf birch (*Betula nana* L.). The remnants were usually not visible with the use of aircraft drones in such areas. Trees (and their fragments) that died relatively recently can be distinguished from ancient tree remnants by the presence of bark fragments. Small tree fragments remaining on the stump also generally indicate that the tree died in the 20th century. We excluded such tree remnants from the analysis and presentation in Figure 3B.

#### Mapping boundaries in the treeline ecotone

Earlier, large-scale mapping of forest–tundra communities was carried out in the study area using our previously developed method (Shiyatov et al 2005, 2007). This was based on identifying homogeneous areas (vegetation territorial units) called phytocoenochoras (Samoilenko et al 2009; Kholod 2016). A phytocoenochora is an area of the terrain that is relatively homogeneous for one or more components of vegetation and/or other indicators, such as the density of forest stands and/or the characteristics of forest site conditions. The average distance between the trees was used to assess tree stand density. Closed forests included areas where the average distance between trees was less than 10 m.

For open forests, the values of this parameter ranged from 10 to 30 m; for areas with sparse tree growth, they ranged from 30 to 60 m; and for tundra areas with single trees, they were 60 m and above (Shiyatov et al 2005).

In this paper, we define the term “ecotone” as the transition zone between types of phytocoenochoras and the term “boundary” as the line between them. We used the following threshold values to identify the previously mentioned types of phytocoenochoras, corresponding to the middle of each of the intervals described earlier: closed forest (average distance between trees up to 8.5 m inclusive, or stand density is at least 176 trees per hectare), open forest (from 8.5 to 25 m inclusive, or at least 20 but less than 176 trees per hectare), areas with sparse tree growth (from 25 to 55 m inclusive, or at least 4 but less than 20 trees per hectare), and tundra with single trees (more than 55 m, or less than 4 trees per hectare).

Maps of the forest–tundra phytocoenochora distribution in the early 1960s and in 2015 were created using a simplified modification of the previously developed method (Mikhailovich and Fomin 2016) in QGIS. Maps of the main stages of this method are shown in *Supplemental material*, Figure S2 (<https://doi.org/10.1659/MRD-JOURNAL-D-20-00002.1.S1>). In the first stage, a layer with Voronoi polygons was created using a point layer with tree coordinate data. In the second stage, cells that belonged to one type of phytocoenochora were selected according to their area values. In the next stage, the cells were merged into larger polygons by removing the internal borders between them,

with subsequent filtering of polygons using their area values. Filtering was necessary to eliminate small polygons and thus avoid degenerate cases. For example, if such a polygon (combined from cells) belonged to a closed forest, its area was too small (contained too few trees) to be considered a closed forest.

## Results

A map that characterizes the spatial distribution of trees in the ecotone of the upper limit of woody vegetation in the study region in the Polar Urals in the early 1960s and 2015 is shown in Figure 3. The collected data indicate that from the beginning of the 1960s until 2015, there was an almost twofold increase in the number of trees in the study area (from 14,377 to 28,344 trees). The location of remnants of trees that previously grew in the upper part of the ecotone and died during the Little Ice Age is shown in Figure 3B. The repeated landscape photos in Figure 2 allowed us to visually assess the changes that had occurred over roughly the last 50 years, for example, in the part of the study area that is visible in the photographs in Figure 2A and B, taken from camera point number 221. The area of the terrain shown in these photos can be seen on the map in Figure 1 (sector of visibility for point 221) and Figure 3 (direction of photography is shown by a red arrow). The photos and the map shown in Figure 3B indicate that trees have not yet reoccupied some habitats that they occupied in the past. This is confirmed by the many tree remnants we found in some upper parts of the ecotone in the study area.

According to the data obtained from sample plots 1–9, the crown cover for closed forest is within a range of more than 30%; for open forests, it is 10 to 30%; for light forests, it is 5 to 10%, and for tundra with individual trees, it is less than 5%. The maps of the main types of phytocoenochoras in the study area at the beginning of the 1960s and in 2015 are shown in Figure 4A and B. The areas of closed forest increased from 23 to 54 ha, those of open forests increased from 76 to 102 ha, and those with sparse tree growth increased from 56 to 116 ha. The area of tundra with single trees decreased from 621 to 505 ha. In terms of percentage (relative to the total area of the study region), the areas of closed forest, areas of open forest, and areas with sparse tree growth increased from 3 to 7%, from 10 to 13%, and from 7 to 15%, respectively, and the areas of tundra with single trees decreased from 80 to 65%.

During the period from 1964 to 2015, the rates of change in tree density (ie trees per hectare per year) within the boundaries of closed forests, open forests, light forests, and tundra with single trees of 2015 were 2.79, 0.85, 0.17, and 0.01, respectively. The ratio of tree density in 2015 to density in 1964 for the listed phytocoenochoras make up the following series: 1.8, 2.6, 4.2, and 7.8, respectively.

## Discussion

A comparative analysis of the number of trees in the early 1960s and in 2015 suggests that regional climate warming, which is observed in the Polar Urals (Briffa et al 1995; Shalaumova et al 2010; Hagedorn et al 2014; Shiyatov and Mazepa 2015), was accompanied by significant changes in the ecotone of the upper boundary of woody vegetation.

According to data from the Salekhard weather station that is nearest to the research area, the average annual air temperature from the 1960s to 2010 increased by about 4°C (*Supplemental material*, Figure S1: <https://doi.org/10.1659/MRD-JOURNAL-D-20-00002.1.S1>). This is shown by the appearance of a young generation of Siberian larch trees, both in the previously unforested or weakly wooded areas of the tundra and in areas with a higher density of trees. In open areas, young trees suffer greatly from snow and wind. The average age of trees with a height exceeding 4 m in nonforested and slightly forested areas (plots 5, 6, 8, and 9) is 25 years (there are no trees with a height of more than 4 m on plot 3). This means that they have appeared on sites since the mid-1980s, during the phase of increasing average annual air temperature (*Supplemental material*, Figure S1: <https://doi.org/10.1659/MRD-JOURNAL-D-20-00002.1.S1>). The location of modern trees and tree remnants allows us to conclude that in many parts of the study region, trees have not yet occupied the places they grew in in the past, and if they do, the number of trees in these areas is still significantly lower than in the past.

Dendrochronological analysis of the tree remnants in the altitude transect (partially across the eastern boundary in the upper-right corner of the study area, indicated in Figure 1 by the dashed line) revealed that some of these trees grew in the ecotone a maximum of 1300 years ago and that the maximum stand density on this transect was between the 11th and the 13th centuries AD (during the period of the Medieval Climatic Optimum) (Mazepa 2005). A similar trend was established for Swedish Scandes: the modern upper treeline position is below its location in AD 1000–1200 (Kullman 2015).

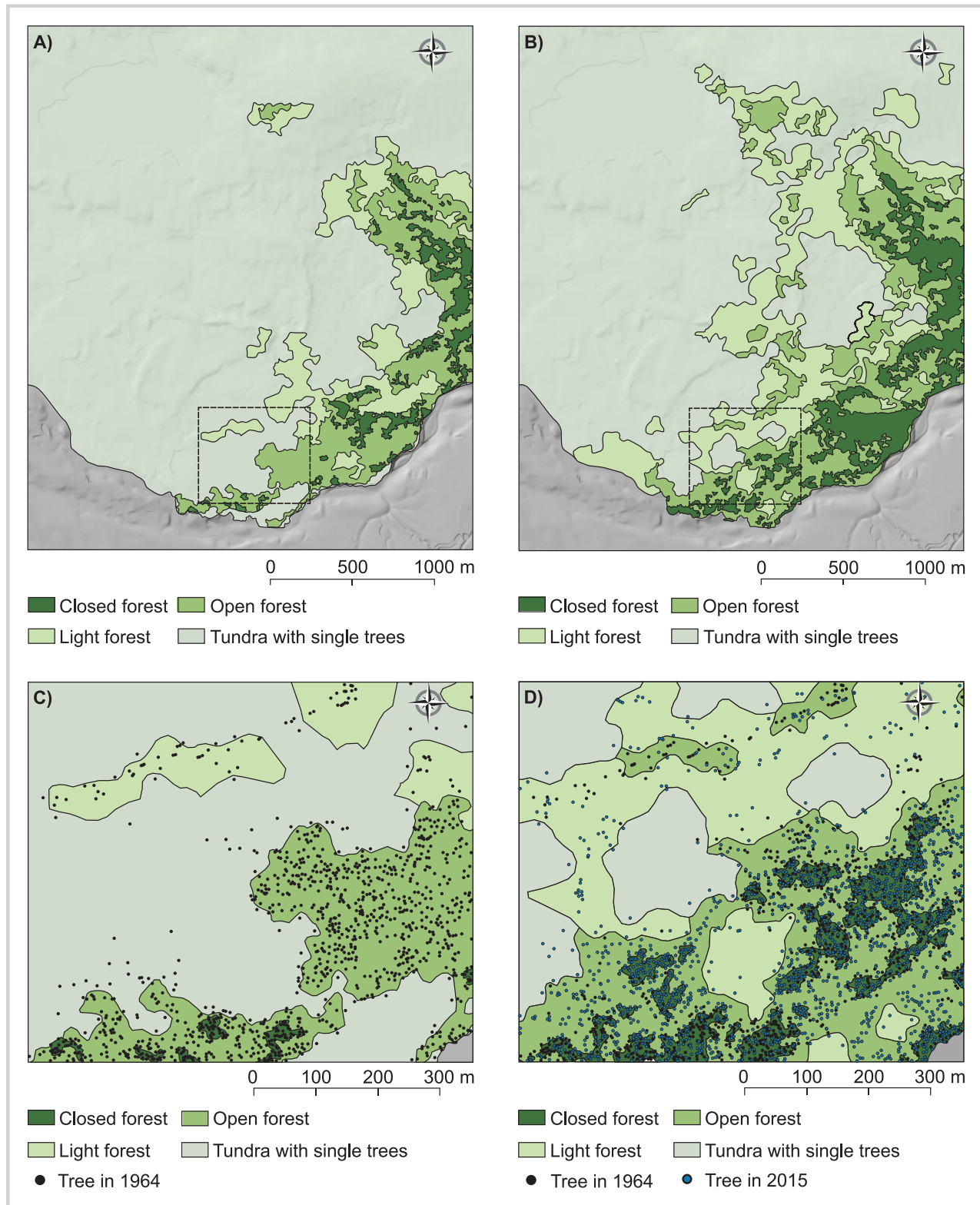
The reasons for the lack of trees in the areas where they previously grew may be as follows: lack of seeds at a distance of more than 40–60 m from seed trees; changing soil conditions (soil loss after the death of trees); competition from grass, low-shrub, and shrub-layer plants; and negative snow effects (snow corrosion of trees in the habitats, with a small amount of snow and shortening of the growing season in snowy habitats).

The presence of areas with groups of trees without woody remnants in the upper part of the ecotone, as seen from the map in Figure 3B, does not necessarily indicate that in these parts of the study region, modern trees reached areas inaccessible to trees in the past. Some larch trees can survive under a certain combination of microclimatic conditions in creeping form, returning to multistem or single stem forms after environmental conditions improve. This means that such areas may be refugia, in which Siberian larch has successfully survived an unfavorable centuries-long cold period since the 15th century (Devi et al 2008).

The proposed method of defining the boundaries between the main types of phytocoenochoras has a high degree of universality and objectivity. If there are quantitative criteria for identifying phytocoenochora types according to tree density, the procedure for determining the location of the boundaries between them due to the high level of formalization of the proposed method should be automated. This allows a researcher to reduce the subjective features of an operator on the final result.

The maps in Figure 4 show the changes in the configuration and areas of different types of phytocoenochoras. One of the features of the expansion of

**FIGURE 4** Map of main types of phytocoenochoras in the early 1960s (A) and 2015 (B). The dashed rectangles denote the map sections shown in (C) and (D).



trees to the tundra or forest–tundra areas is treeless areas surrounded by trees, followed by their gradual covering by trees. This process is facilitated by the provision of seeds from trees surrounding such areas.

The uneven distribution of snow in the territory studied results from the transfer of snow by wind and the presence

of obstacles in the form of convex relief elements, as well as areas with dense trees. As a rule, snow is blown away by the wind from the upper parts of the hills and accumulates in the lower concave areas or areas with trees. Once tree density is high enough, tree stands can accumulate snow. As a result, snow drifts can form in the inner part of the



forested area relatively close to the boundary, forming an obstacle for the wind. The effects of snow accumulation on trees may be positive or negative (Hättenschwiler and Smith 1999; Hagedorn et al 2014).

Snow cover several meters in depth can delay the start of the growing season (ie shorten the already relatively short growing season). The reduction in the duration of the growing season has a negative effect on the survival and growth of young trees with heights lower than the snow cover depth. The locations with large accumulations of snow on the leeward sides of elongated landforms formed by glacial deposits are free from trees. This is because snow in these areas may be present during June or late July (ie the ground cover is freed from snow in the second half of the growing season). The remaining warm period of the year is not enough for the normal growth of Siberian larch trees (Shiyatov et al 2005). In addition, in the spring period, the subsidence of moist snow leads to the breaking of the lower branches of large larch trees (Shiyatov et al 2005). A positive effect of the accumulation of snow is that it can protect the younger generation of trees from frost and snow corrosion. On windblown upper parts of hills and ridges, where the snow depth is small, young larch trees suffer greatly from snow corrosion and survive mainly under the protection of large single trees or small groups of trees, as well as microrelief features, such as large stones or small ridges.

Analysis of geographical patterns of species range shifts under climate change may improve our ability to assess the persistence and shift of species (Breshears et al 2008; Maggini et al 2010; Lenoir and Svenning 2015). The basic types of species range shifts grouped into some broad categories (expand, march, lean, retract, and crash), described by Lenoir and Svenning (2015), closely relate to the problem of boundary detection. This or a similar classification (Breshears et al 2008; Maggini et al 2010) of climate-driven geographical patterns and the method we developed of revealing boundaries between plant cover units based on the location of trees are complementary. This method, combined with the approach of analyzing geographical patterns, provides new opportunities to study the transformation of plant cover units in mosaics of local microclimate change.

## Conclusions

Woody vegetation located in the upper limits of its growing range is a sensitive indicator of climate changes. We studied, at the quantitative level, the features of the spatial position of Siberian larch trees in the treeline ecotone of the upper boundary of woody vegetation in the early 1960s and in 2015, as well as remnants of trees that died in the upper part of the ecotone in the 13th to 19th centuries. The number of trees in the ecotone has doubled over the last half century.

Maps were created of the spatial distribution of closed forest, open forest, areas with sparse tree growth, and tundra with single trees in the 1960s and 2015 using a method specially developed for this purpose (Mikhailovich and Fomin 2016). This method can be universally applied. It allows a researcher to determine boundaries between groups of points, in our case, based on the location of trees and quantitative thresholds of tree density.

The development of technologies for obtaining, processing, and analyzing high-spatial-resolution data that allow us to determine the location of individual trees in the upper treeline ecotone, in combination with our approach to determining the boundary between units of vegetation, opens the possibility of mapping the upper-boundary forests in the mountains of other regions of the world. Our study contributes to understanding the particularity of climate-driven changes in the spatial position of woody vegetation at the upper treeline. In a broader sense, our studies can be used to solve problems of sustainable forest management, in particular improving existing methods and developing new ones for quantifying and predictive modeling the dynamics of forest ecosystems using surface information and remote-sensing techniques.

## ACKNOWLEDGMENTS

This work was supported by the Russian Foundation for Basic Research (project 18-34-00803 mol\_a). Some studies related to the assessment of the spatial distribution of snow at the beginning of the growing season were carried out within a grant from the Russian Science Foundation (project 17-14-01112) and a grant from the Russian Ministry for Education and Science (FEUG-2020-0013). We express our gratitude to Dmitriy Golikov and Yegor Agapitov for their help in setting up forest plots and data processing, and also to Denis Kapralov for help in mapping the tree remnants.

## REFERENCES

- Bakker J, Olivera MM, Hooghiemstra H.** 2008. Holocene environmental change at the upper forest line in northern Ecuador. *The Holocene* 18:877–893. <https://doi.org/10.1177/0959683608093525>.
- Bateson G.** 1979. *Mind and Nature: A Necessary Unity*. New York, NY: EP Dutton.
- Breshears DD, Huxman TE, Adams HD, Zou CB, Davison JE.** 2008. Vegetation synchronously leans upslope as climate warms. *PNAS* 105(33):11591–11592.
- Briffa KR, Jones PD, Schweingruber FH, Shiyatov SG, Cook ER.** 1995. Unusual twentieth-century summer warmth in a 1,000-year temperature record from Siberia. *Nature* 376:156–159.
- Bryn A.** 2008. Recent forest limit changes in south-east Norway: Effects of climate change or regrowth after abandoned utilisation? *Norwegian Journal of Geography* 62:251–270.
- Bryn A, Potthoff K.** 2018. Elevational treeline and forest line dynamics in Norwegian mountain areas—A review. *Landscape Ecology* 33:1225–1245.
- Camarero JJ, Gutiérrez E.** 2000. Boundary detection in altitudinal treeline ecotones in the Spanish Central Pyrenees. *Arctic, Antarctic and Alpine Research* 32:117–126.
- Camarero JJ, Gutiérrez E.** 2004. Pace and pattern of recent treeline dynamics: Response of ecotones to climatic variability in the Spanish Pyrenees. *Climatic Change* 63(1–2):181–200. <https://doi.org/10.1023/B:CLIM.0000018507.71343.46>.
- Camarero JJ, Gutiérrez E, Fortin M-J.** 2006. Spatial patterns of plant richness across treeline ecotones in the Pyrenees reveal different locations for richness and tree cover boundaries. *Global Ecology and Biogeography* 15:182–191.
- Chhetri PK.** 2018. Predicting upslope expansion of sub-alpine forest in the Makalu Barun National Park, Eastern Nepal, with a hybrid cartographic model. *Journal of Forestry Research* 29:129–137. <https://doi.org/10.1007/s11676-017-0421-8>.
- Chiu C-A, Lee M-F, Tzeng H-Y, Liao M-C.** 2014. A concise scheme of vegetation boundary terms in subtropical high mountains. *African Journal of Agricultural Research* 9(20):1560–1570.
- Devil N, Hagedorn F, Moiseev P, Bugmann H, Shiyatov S, Mazepa V, Rigling A.** 2008. Expanding forests and changing growth forms of Siberian larch at the Polar Urals treeline during the 20th century. *Global Change Biology* 14:1581–1591.
- Dufour-Tremblay G, Lévesque E, Boudreau S.** 2012. Dynamics at the treeline: Differential responses of *Picea mariana* and *Larix laricina* to climate change in eastern subarctic Québec. *Environmental Research Letters* 7:044038. <https://doi.org/10.1088/1748-9326/7/4/044038>.
- Fomin VV, Mikhailovich AP, Agapitov YM, Golikov DY, Beňová Y.** 2019. Methodological aspects of the larch trees recognition in the upper tree line ecotone in the Polar Urals with the use of aerial and satellite images of high spatial resolution [in Russian with English abstract]. In: Lenskaya AL, Saygina RV, Mikhailova EL, Tchernikh LD, Roschina LV, editors. *Forest Science in the Implementation of the Concept of the Ural Engineering school: Socio-economic and Environmental Problems of the Forest Sector of the Economy*. Proceedings of the XII International Scientific and Technical Conference. Yekaterinburg, Russia: Ural State Forest Engineering University, pp 243–246.
- Fomin VV, Mikhailovich AP, Shiyatov SG.** 2015. New approaches to studies on the dynamics of high-mountain tree vegetation using repeated landscape

photographs: The example of the Polar Urals. *Russian Journal of Ecology* 46:397–404.

**Fortin M-J, Olson RJ, Ferson S, Iverson L, Hunsaker C, Edwards G, Klemas V.** 2000. Issues related to the detection of boundaries. *Landscape Ecology* 15(5): 453–466.

**Gorchakovskiy PL, Shiyatov SG.** 1985. *Phytoindication of the Natural Conditions and Processes in Highlands* [in Russian]. Moscow, Russia: Nauka.

**Gosz JR.** 1993. Ecotone hierarchies. *Ecological Applications* 3(3):369–376.

**Grossman D, Goodin KL, LiX, Faber-Langendoen D, Anderson M. Bourgeron P, Vaughan R.** 1994. *Field Methods for Vegetation Mapping*. Arlington, VA and Redlands, CA: National Biological Survey/National Park Service Vegetation Mapping Program.

**Hagedorn F, Shiyatov SG, Mazepa VS, Devi NM, Grigor'ev AA, Bartish AA, Fomin VV, Kapralov DS, Terent'ev M, Bugman H, Rigling A, Moiseev PA.** 2014. Treeline advances along the Urals mountain range—Driven by improved winter conditions? *Global Change Biology* 20:3530–3543. <https://doi.org/10.1111/gcb.12613>.

**Harsch MA, Bader MY.** 2011. Treeline form—A potential key to understanding treeline dynamics. *Global Ecology and Biogeography* 20(4): 582–596. <https://doi.org/10.1111/j.1466-8238.2010.00622.x>.

**Harsch MA, Hulme PE, McGlone MS, Duncan RP.** 2009. Are treelines advancing? A global meta-analysis of treeline response to climate warming. *Ecology Letters* 12(10):1040–1049. <https://doi.org/10.1111/j.1461-0248.2009.01355.x>.

**Hättenschwiler S, Smith WK.** 1999. Seedling occurrence in alpine treeline conifers: A case study from the central Rocky Mountains, USA. *Acta Oecologica* 20:219–224. [https://doi.org/10.1016/S1146-609X\(99\)80034-4](https://doi.org/10.1016/S1146-609X(99)80034-4).

**Hellmann L, Agafonov L, Ljungqvist FC, Churakova [Sidorova] O, Dührthorn E, Esper J, Hülsmann L, Kiryanov AV, Moiseev P, Mygland VS, et al.** 2016. Diverse growth trends and climate responses across Eurasia's boreal forest. *Environmental Research Letters* 11(7):1–12. <https://doi.org/10.1088/1748-9326/11/7/074021>.

**Hofgaard A, Rees G.** 2008. *PPS Arctic Manual*. Trondheim, Norway: PPS Arctic.

**Holtmeier F-K.** 2003. *Mountain Timberlines: Ecology, Patchiness, and Dynamics*. Dordrecht, The Netherlands: Kluwer.

**Holtmeier F-K, Broll G.** 2017. Treelines—Approaches at different scales. *Sustainability* 9(5):808. <https://doi.org/https://doi.org/10.3390/su9050808>.

**Hufkens K, Scheunders P, Ceulemans R.** 2009. Ecotones in vegetation ecology: Methodologies and definitions revisited. *Ecological Research* 24(5):977–986. <https://doi.org/10.1007/s11284-009-0584-7>.

**Hustich I.** 1953. The boreal limits of conifers. *Arctic* 6:49–162.

**Jobbágy EG, Jackson RB.** 2000. Global controls of forest line elevation in the northern and southern hemispheres. *Global Ecology & Biogeography* 9:253–268.

**Kharuk VI, Im ST, Dvinskaya ML.** 2010. Forest–tundra ecotone response to climate change in the Western Sayan Mountains, Siberia. *Scandinavian Journal of Forest Research* 25(3):224–233. <https://doi.org/10.1080/02827581003766959>.

**Kholod SS.** 2016. Sigma-syntaxa of Wrangel Island [in Russian]. *Vegetation of Russia* 29:89–116.

**Körner C.** 1998. A re-assessment of high elevation treeline positions and their explanation. *Oecologia* 115(4):445–459. <https://doi.org/10.1007/s0044200050540>.

**Kullman L.** 1991. Structural change in a subalpine birch woodland in north Sweden during the past century. *Journal of Biogeography* 18(1):53. <https://doi.org/10.2307/2845244>.

**Kullman L.** 2002. Rapid recent range-margin rise of tree and shrub species in the Swedish Scandes. *Journal of Ecology* 90:68–77.

**Kullman L.** 2007. Tree line population monitoring of *Pinus sylvestris* in the Swedish Scandes, 1973–2005: Implications for tree line theory and climate change ecology. *Journal of Ecology* 95:41–42. <https://doi.org/https://doi.org/10.1111/j.1365-2745.2006.01190.x>.

**Kullman L.** 2012. The Alpine treeline ecotone in the southernmost Swedish Scandes: Dynamism on different scales. In: Myster RW, editor. *Ecotones Between Forest and Grassland*. New York, NY and London, United Kingdom: Springer, pp 271–298. <https://doi.org/https://doi.org/10.1007/978-1-4614-3797-0>.

**Kullman L.** 2015. Higher-than-present medieval pine (*Pinus sylvestris*) treeline along the Swedish Scandes. *Landscape Online* 42(1):1–14. <https://doi.org/10.3097/LO.201542>.

**Kullman L.** 2016. Pine (*Pinus sylvestris* L.) penetration towards the head of the Handölan Valley: Recent reversal of long-term retrogression trend-contrasting responses to climate change of tree- and forest line. *International Journal of Environmental & Agriculture Research* 2(5):163–172.

**Lenoir J, Svenning JC.** 2015. Climate-related range shifts—A global multidimensional synthesis and new research directions. *Ecography* 38:15–28. <https://doi.org/10.1111/ecog.00967>.

**Maggini R, Lehmann A, Kéry M, Schmid H, Beniston M, Jenni L, Zbinden N.** 2010. Are Swiss birds tracking climate change? Detecting elevational shifts using response curve shapes. *Ecological Modelling* 222:21–32. <https://doi.org/10.1016/j.ecolmodel.2010.09.010>.

**Mamet SD, Brown CD, Trant AJ, Laroque CP.** 2019. Shifting global *Larix* distributions: Northern expansion and southern retraction as species respond to changing climate. *Journal of Biogeography* 46:30–44. <https://doi.org/10.1111/jbi.13465>.

**Mazepa VS.** 2005. Stand density in the last millennium at the upper tree-line ecotone in the Polar Urals Mountains. *Canadian Journal of Forest Research* 35:2082–2091. <https://doi.org/10.1139/x05-111>.

**Mikhailovich A, Fomin V.** 2016. The algorithm for determining the tree line and quantitative assessment of vertical and horizontal shifts of plant borders on the Polar Urals in the Second half of the XX–early XXI century. In: Stávková J, editor. *Proceedings of the European Scientific Conference of Doctoral Students*. Brno, Czech Republic: Mendel University, p 32.

**Mikhailovich AP, Shiyatov SG, Fomin VV.** 2016. *Photographic Atlas of the Polar Urals Landscapes in Downstream Yengaiu and Kerdomanshor Rivers in the Second Half of the XX–Early XXI Centuries*. Yekaterinburg, Russia: Ural State Forest Engineering University.

**Oosthoek KJ.** 2018. Little Ice Age. Environmental History Resources. <https://www.eh-resources.org/little-ice-age/>; accessed on 12 January 2020.

**Pellizzari E, Camarero JJ, Gazol A, Granda E, Shetti R, Wilmking M, Moiseev P, Pividori M, Carrer M.** 2017. Diverging shrub and tree growth from the Polar to the Mediterranean biomes across the European continent. *Global Change Biology* 23:3169–3180. <https://doi.org/https://doi.org/10.1111/gcb.13577>.

**QGIS.** 2020. QGIS: A free and open source geographic information system. <https://www.qgis.org>; accessed on 21 March 2020.

**Samolienko ZA, Shepeleva LF, Shepelev AI.** 2009. Ob-Irtys interfluvial vegetation area units [in Russian]. *Tomsk State University Journal* 327:208–213.

**Sanchez-Salguero R, Camarero J, Gutiérrez E, Gazol A, Sangüesa-Barreda G, Moiseev P, Linares JC.** 2018. Climate warming alters age-dependent growth sensitivity to temperature in Eurasian alpine treelines. *Forests* 9(11):1–21. <https://doi.org/10.3390/f9110688>.

**Sannikov SN, Sannikova NS, Petrova IV.** 2012. *Outlines of Theory of Forest Populational Biology* [in Russian with English abstract]. Yekaterinburg, Russia: Botanical Garden of the Ural Branch of the Russian Academy of Sciences.

**Shalaumova YV, Fomin VV, Kapralov DS.** 2010. Spatiotemporal dynamics of the Urals' climate in the second half of the 20th century. *Russian Meteorology and Hydrology* 35(2):107–114. <https://doi.org/10.3103/S1068373910020044>.

**Shiyatov SG.** 1993. The upper timberline dynamics during the last 1100 years in the Polar Urals Mountains. In: Frenzel B, Eronen B, Glaser M, editors. *Oscillations of the Alpine and Polar Tree Limits in the Holocene*. Stuttgart and Jena, Germany, and New York, NY: Gustav Fischer Verlag, pp 195–203.

**Shiyatov SG.** 2003. Rates of change in the upper treeline ecotone in the Polar Urals Mountains. *PAGES News* 11(1):8–10.

**Shiyatov SG, Mazepa VS.** 2015. Contemporary expansion of Siberian larch into the mountain tundra of the Polar Urals. *Russian Journal of Ecology* 46:495–502. <https://doi.org/10.1134/S1067413615060168>.

**Shiyatov SG, Terent'ev MM, Fomin VV.** 2005. Spatiotemporal dynamics of forest–tundra communities in the Polar Urals. *Russian Journal of Ecology* 36(2):69–75.

**Shiyatov SG, Terent'ev MM, Fomin VV, Zimmermann NE.** 2007. Altitudinal and horizontal shifts of the upper boundaries of open and closed forests in the Polar Urals in the 20th century. *Russian Journal of Ecology* 38(4):223–227. <https://doi.org/10.1134/S1067413607040017>.

**Smith WK, Germino MJ, Hancock TE, Johnson DM.** 2003. Another perspective on altitudinal limits of alpine timberlines. *Tree Physiology* 23(16):1101–1112. <https://doi.org/10.1093/treephys/23.16.1101>.

**Szeicz JM, Macdonald GM.** 1995. Recent white spruce dynamics at the subarctic alpine treeline of north-western Canada. *Journal of Ecology* 83(5):873. <https://doi.org/10.2307/2261424>.

**Wiegand T, Camarero JJ, Rüger N, Gutiérrez E.** 2006. Abrupt population changes in treeline ecotones along smooth gradients. *Journal of Ecology* 94:880–892. <https://doi.org/10.2307/3879554>.

**Yandex Maps.** 2020. Yandex maps. <https://yandex.ru/maps/>; accessed on 21 March 2020.

**Yarrow MM, Marín VH.** 2007. Toward conceptual cohesiveness: A historical analysis of the theory and utility of ecological boundaries and transition zones. *Ecosystems* 10(3):462–476. <https://doi.org/10.1007/s10021-007-9036-9>.

## Supplemental material

**FIGURE S1** Location of the forest plots in the study area, with an aerial photograph from 1962, a satellite image from 2015, and time series of mean annual temperature and annual precipitation.

**FIGURE S2** The main stages of the algorithm for defining the boundaries between different types of phytocoenochoras.

Found at: <https://doi.org/10.1659/MRD-JOURNAL-D-20-00002.1.S1>.