

Molecular Systematics of Tanaidacea (Crustacea: Peracarida) Based on 18S Sequence Data, with an Amendment of Suborder/Superfamily-Level Classification

Authors: Kakui, Keiichi, Katoh, Toru, Hiruta, Shimpei F., Kobayashi, Norio, and Kajihara, Hiroshi

Source: Zoological Science, 28(10) : 749-757

Published By: Zoological Society of Japan

URL: <https://doi.org/10.2108/zsj.28.749>

BioOne Complete (complete.BioOne.org) is a full-text database of 200 subscribed and open-access titles in the biological, ecological, and environmental sciences published by nonprofit societies, associations, museums, institutions, and presses.

Your use of this PDF, the BioOne Complete website, and all posted and associated content indicates your acceptance of BioOne's Terms of Use, available at www.bioone.org/terms-of-use.

Usage of BioOne Complete content is strictly limited to personal, educational, and non - commercial use. Commercial inquiries or rights and permissions requests should be directed to the individual publisher as copyright holder.

BioOne sees sustainable scholarly publishing as an inherently collaborative enterprise connecting authors, nonprofit publishers, academic institutions, research libraries, and research funders in the common goal of maximizing access to critical research.

Molecular Systematics of Tanaidacea (Crustacea: Peracarida) Based on 18S Sequence Data, with an Amendment of Suborder/Superfamily-level Classification

Keiichi Kakui^{1*}, Toru Katoh², Shimpei F. Hiruta²,
Norio Kobayashi^{3†} and Hiroshi Kajihara²

¹Department of Natural History Sciences, Graduate School of Science, Hokkaido University,
Sapporo 060-0810, Japan

²Department of Natural History Sciences, Faculty of Science, Hokkaido University,
Sapporo 060-0810, Japan

³The Hokkaido University Museum, Hokkaido University, Sapporo 060-0810, Japan

Phylogenetic relationships within Tanaidacea were analyzed based on sequence data for the 18S rRNA gene. Our results strongly supported a monophyletic group composed of Neotanaidae, Tanaoidea, and Paratanaoidea, with the first two taxa forming a clade. These results contradict three previously suggested hypotheses of relationships. Based on the molecular results, and considering morphological similarities/differences between Neotanaidomorpha and Tanaidomorpha, we demoted Suborder Neotanaidomorpha to Superfamily Neotanaoidea within Tanaidomorpha; with this change, the classification of extant tanaidaceans becomes a two-suborder, four-superfamily system. This revision required revision of the diagnoses for Tanaidomorpha and its three superfamilies. The results for Apseudomorpha were ambiguous: this taxon was monophyletic in the maximum likelihood and Bayesian analyses, but paraphyletic in the maximum parsimony and minimum evolution analyses.

Key words: Tanaidacea, Neotanaidae, 18S rRNA, phylogenetic relationship, suborder/superfamily-level classification

INTRODUCTION

Order Tanaidacea is a group of aquatic crustaceans belonging to Superorder Peracarida, which also contains the common orders Amphipoda, Cumacea, and Isopoda (Martin and Davis, 2001). Most tanaidaceans are marine, having been reported from around the world, ranging in depth from coastal areas (1–2 m) to the deep-sea bottom at about 9000 m (cf. Kudinova-Pasternak, 1972); a few freshwater and brackish species are also known (Kakui et al., 2010). At present, more than 1000 extant and 13 fossil species are classified into 35 families (Anderson, 2010; Larsen, 2011).

For the suborder-level classification in Order Tanaidacea, two different systems have been proposed: Lang's (1956) two-suborder system and Sieg's (1980b) four-suborder system. Lang's (1956) two suborders, Monokonophora and Dikonophora, were based on male external genitalia, with monokonophorans having only a single genital cone and dikonophorans having two. As diagnostic characters for the two suborders, Lang (1956) also suggested the number of antennular flagella, the presence or absence of the mandib-

ular palp, and the number of oostegites, to which Lauterbach (1970) proposed additional 18 characters. Sieg (1980b) abolished Lang's (1956) classification, presenting a new system comprising Anthracocaridomorpha, Apseudomorpha, Neotanaidomorpha, and Tanaidomorpha. Sieg's (1980b) action was based on the facts that 1) several fossil species express very different characters from extant species, e.g., the pleon consisting of six pleonites and one telson; 2) there are several extant and fossil species contradicting Lang's (1956) male genitalia-rule, i.e., the dikonophorans *Hexapleomera robusta* (Moore, 1894) and *Pancoloides litoralis* (Vanhöffen, 1914) have a single genital cone, and a monokonophoran-like fossil species, *Jurapseudes friedericianus* (Malzahn, 1965), has two genital cones; and 3) Family Neotanaidae, in Dikonophora, differs in various ways from other dikonophorans. In consequence, Sieg (1980b) divided Dikonophora into two suborders, Neotanaidomorpha for Neotanaidae sensu Lang (1956) and Tanaidomorpha for the other dikonophorans. Anthracocaridomorpha contains only fossil species, whereas Apseudomorpha includes both fossil and extant species. In addition, Sieg (1980b) established superfamilies within Suborders Tanaidomorpha and Apseudomorpha. Tanaidomorpha contains two superfamilies, Paratanaoidea and Tanaoidea; the former includes Paratanaidae sensu Lang (1956) and the latter comprises a single family, Tanaidae. Apseudomorpha is composed of the fossil superfamily Ophthalmapseudoidea

* Corresponding author. Phone: +81-11-706-3524;
Fax : +81-11-706-4851;
E-mail: k_kakui@mail.goo.ne.jp

† Present address: School of Health and Social Services, Saitama Prefectural University, Koshigaya 343-8540, Japan
doi:10.2108/zsj.28.749

and the extant Apseuidoidea; the latter is identical to Monokonophora sensu Lang (1956). Schram et al. (1986) revised the fossil taxa and modified Sieg's (1980b) system to the four-suborder, five-superfamily system currently accepted by most researchers (Larsen, 2005). The above two high-level classification systems are summarized in Table 1.

Previous researchers have proposed three hypotheses for relationships among extant higher-level taxa; these hypotheses differ in the position of Neotanaidae. In his two-suborder system, Lang (1956) regarded Neotanaidae as ancestral to (included the common ancestor of) Paratanaidae (Fig. 1A) because 1) neotanuids show primitive states in some appendages, and 2) these two families are similar in having four paired oostegites and reduced mouthparts in males. Lauterbach (1970) and Gardiner (1975) accepted Lang's (1956) two-suborder system, but placed Neotanaidae in a different position and assumed that Tanaidae and Paratanaidae shared a common ancestor (Fig. 1B), because members of the latter two families have thoracic glands, which are absent in Neotanaidae. Sieg (1980a) at first concurred with Lauterbach (1970) and Gardiner (1975), but later suggested a close relationship between Neotanaidomorpha and Apseudomorpha (Fig. 1C), based on the reduced article 1 of the antenna (cf. Sieg, 1984: p. 90; figs. 9, 10, 29).

Among the above three hypotheses with regard to relationships, the currently accepted three-suborder, three-superfamily system is still debatable: Tanaidomorpha is

paraphyletic in Lang's (1956) hypothesis (Fig. 1A). In a recent molecular phylogenetic analysis of Tanaidacea (Drumm, 2010), based on a "total evidence analysis (in-group taxa having at least two out of the 28S rRNA, COI, and H3 partial sequences)", Tanaidomorpha was monophyletic with strong support and Apseudomorpha was monophyletic with weak support. Drumm's (2010) taxon sampling, however, failed to include neotanuids, and thus the higher-level relationships and a suitable system for classifying extant tanaidaceans remained open to question. The aim of our study was to shed light on the phylogenetic position of Family Neotanaidae using 18S rRNA sequences, and to clarify the phylogenetic relationships among higher taxa. On the basis of the relationships we observed, we discuss the extant tanaidacean system.

MATERIALS AND METHODS

Materials

Specimen collection localities are shown in Table 2. We included two isopods (*Asellus hilgendorfii* Bovallius, 1886 and *Colubotelson thomsoni* Nicholls, 1944) as outgroup taxa (e.g., Siewing, 1963; Pires, 1987; Richter and Scholtz, 2001). 18S sequences for the following four species were obtained from GenBank (NCBI): *C. thomsoni*; *Kalliapseudes* sp. 2 (registered by Spears et al. [2005] under the name *Kalliapseudes* sp.); *Paradoxapseudes bermudeus* (Băcescu, 1980) (registered by Wilson [2009] under the name *Apseudes bermudeus*); and *Paratanais malignus* Larsen, 2001 (Genbank accession numbers AF255703.1, AY781430.1, GQ175865.1, and AY781429.1, respectively).

Primer design

This study used one molecular marker, the nuclear small sub-unit ribosomal RNA (18S rRNA) gene. Primers used for the PCR and cycle sequencing are listed in Table 3. The two outermost primers, 18S-a1F and 18S-a9R, were designed by reference to the sequence of *Kalliapseudes* sp. (Spears et al., 2005). Primers 18S-F2 and 18S-F3 were designed by Yamaguchi and Endo (2003). Other primers were designed by using sequences obtained during this study, taking into account the location of variable regions assessed from the secondary structure of the honeybee 18S sequence (Gillespie et al., 2006), and were checked for their adequacies with Primer3Plus (Untergasser et al., 2007).

DNA extraction, PCR, and sequencing

Total DNA was extracted from whole specimens or parts of specimens, using the DNeasy Blood & Tissue Kit (Qiagen GmbH) and following the manufacturer's protocol. Exoskeletons were retained and preserved in 99% ethanol, and deposited in the Zoological Institute, Faculty of Science, Hokkaido University, Japan (ZIHU): ZIHU 4000–4028. Amplifications were performed by using a DNA thermal cycler with the following reaction conditions: 95°C for 7 min; 35 cycles of 95°C for 30 seconds, 50°C for 90 seconds, 72°C for 90 seconds; and 72°C for 7 min. All nucleotide sequences were determined by direct sequencing by using BigDye Terminator Kit ver. 3.1 with a 3730 DNA Analyzer (Life Technologies, USA).

Phylogenetic analyses

Nucleotide sequence pre-alignments were performed with Clustal W (Thompson et al., 1994) in MEGA 4 (Tamura et al., 2007), with the default settings: gap opening cost = 15, gap extension cost = 6.66, and transition weight = 0.5. The pre-aligned data were then realigned by eye according to the secondary

Table 1. Two high-level classification systems for tanaidaceans. Family names in the currently accepted system are not shown. S.O., suborder; S.F., superfamily; F., family. † indicates a taxon known only from fossils.

Lang's (1956) system (Two-suborder)	Currently accepted system (Four-suborder, five-superfamily)
S.O. MONOKONOPHORA	S.O. APSEUDOMORPHA
F. Apseuidae	→ S.F. Apseuidoidea
F. Kalliapseudidae	→ S.F. Cretitanaoidea †
	→ S.F. Jurapseuidoidea †
S.O. DIKONOPHORA	S.O. TANAIDOMORPHA
F. Tanaidae	→ S.F. Tanaoidea
F. Paratanaidae	→ S.F. Paratanaoidea
F. Neotanaidae	→ S.O. NEOTANAIDOMORPHA
	→ S.O. ANTHRACOCARIDOMORPHA †

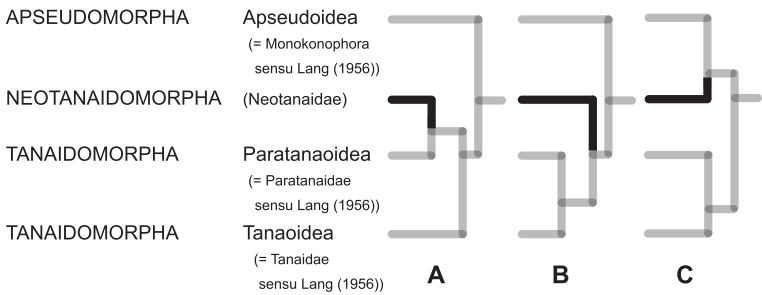


Fig. 1. Phylogenetic hypotheses previously suggested for Tanaidacea. (A) Lang's (1956) hypothesis. (B) Lauterbach's (1970) and Gardiner's (1975) hypothesis. (C) Sieg's (1984) hypothesis, including only extant higher taxa than superfamily. Bold taxon names in all capital letters indicate suborders. The solid branch indicates Neotanaidae.

Table 2. Taxa included in this study's analysis, place of origin, and 18S sequence length.

Taxa	Locality	Sampling site or Reference		depth (m)	Collector or vessel*	Sequence length (bp)
		Latitude (N)	Longitude (E)			
Suborder APSEUDOMORPHA						
Superfamily Apseuidoidea						
Family Apseudidae						
Subfamily Apseudinae						
<i>Fageapseudes brachyomos</i> Bamber, 2007	Stn. Off Kinkazan	38°28'60.00"	143°40'6.00"	3990–4181	SoM	2118
<i>Paradoxapseudes bermudeus</i> (Băcescu, 1980)**	–	Wilson (2009)		–	–	2032
<i>Paradoxapseudes littoralis</i> (Shiino, 1952)	Shizuoka: Shimoda	34°40'1.39"	138°56'6.75"	Intertidal	KK	2021
<i>Atlantapseudes</i> sp.	Stn. Kago-7-Okinawa Trough	28°29'12.00"	127°58'24.00"	1068	SoM	2146
Subfamily Leviapseudinae						
<i>Carpoapseudes varindex</i> Bamber, 2007	Stn. Kago-3-Okhotsk	44°34'36.00"	144°41'30.00"	1552	SoM	2095
<i>Leviapseudes</i> sp.	Stn. Torishima Island	26°35'12.00"	127° 0'17.99"	1734	SoM	2086
Family Kalliapseudidae (subfamily Kalliapseudinae)						
<i>Kalliapseudes</i> sp. 1	Stn. South of Nagannu Island	26°14'37.81"	127°32'28.20"	37	ToM	2326
<i>Kalliapseudes</i> sp. 2**	–	Spears et al. (2005)		–	–	2340
Family Metapseudidae (subfamily Metapseudinae)						
<i>Apseudomorpha</i> sp.	Hokkaido: Oshoro	43°12'46.23"	140°51'29.03"	Intertidal	KK	2095
Family Pagurapseudidae (subfamily Pagurapseudinae)						
<i>Macrolabrum</i> sp.	Okinawa: Bise	26°42'41.17"	127°52'45.25"	Intertidal	KK	1994
Family Parapseudidae (tribe Parapseudini)						
<i>Longipedis fragilis</i> Larsen and Shimomura, 2006	Stn. Hirase	30°5'8.40"	130°4'43.20"	87	ToM	2099
<i>Parapseudes algicola</i> (Shiino, 1952)	Shizuoka: Shimoda	34°40'1.39"	138°56'6.75"	Intertidal	KK	2081
<i>Parapseudes arenamans</i> Larsen and Shimomura, 2008	Okinawa: Gahi Island	26°13'8.40"	127°17'18.60"	3	KK	2084
Family Sphyrapodidae (subfamily Pseudosphyrapodinae)						
<i>Pseudosphyrapus quintolongus</i> Kakui et al., 2007	Stn. R-1	28°31'15.60"	126°57'42.60"	345	NaM	2706
<i>Pseudosphyrapus</i> aff. <i>quintolongus</i>	Stn. Enshu Nada	34°10'41.99"	137°28'54.00"	1316	SoM	2713
<i>Pseudosphyrapus</i> aff. <i>serratus</i> (G.O. Sars, 1882)	Stn. West of Musashi Bank	44°41'36.00"	139°48'6.00"	528	SoM	2909
Suborder NEOTANAIMORPHA						
Family Neotanaidae						
<i>Neotanais</i> sp. 1	Stn. North of Kuroshima Island	26°20'23.40"	127°26'14.40"	646	ToM	2296
<i>Neotanais</i> sp. 2	Stn. T	29°11'28.20"	128°6'28.80"	1150	NaM	2375
Suborder TANAIMORPHA						
Superfamily Tanaoidea						
Family Tanaidae						
<i>Tanais tinhauae</i> Bamber and Bird, 1997	Kochi: Sukumo	32°54'56.80"	132°42'46.40"	Intertidal	KK	1922
<i>Hexapleomera</i> sp.	Carapace of loggerhead turtle bred in Okinawa Churaumi Aquarium				AK, KK	1878
<i>Sinelobus</i> sp. 1	Kagawa: Sakaide	34°19'41.57"	133°52'29.91"	Estuary	YH	1863
<i>Sinelobus</i> sp. 2	Kochi: Kochi	33°32'26.40"	133°33'10.80"	Estuary	KK	1858
<i>Zeuxo</i> sp. 1	Hokkaido: Rebun	45°24'25.55"	140°59'28.43"	Intertidal	KK	1882
<i>Zeuxo</i> sp. 2	Kanagawa: Misaki	35° 9'28.99"	139°36'45.01"	Intertidal	AY, KK	1883
Superfamily Paratanaoidea						
Family Agathotanaidae						
<i>Paranarthura</i> sp.	Stn. T	29°11'28.20"	128° 6'28.80"	1150	NaM	2395
Family Leptocheliidae						
<i>Letochelia itoi</i> Ishimaru, 1985	Hokkaido: Oshoro	43°12'46.23"	140°51'29.03"	Intertidal	HY	1818
Family Nototanaidae						
<i>Nesotanais ryukyuensis</i> Kakui et al., 2010	Okinawa: Naha: Noha River	26°11'13.38"	127°41'8.84"	Estuary	KK	2291
Family Paratanaidae						
<i>Paratanais</i> sp.	Stn. Hirase	30° 5'8.40"	130° 4'43.20"	87	ToM	2152
<i>Paratanais malignus</i> Larsen, 2001**	–	Spears et al. (2005)		–	–	2152
Family incertae sedis						
<i>Chaulioleona</i> sp.	Stn. East of Hiraji Sone	32°14'49.08"	129°30'6.66"	421	NaM	2313
<i>Metatanais</i> sp.	Stn. TW-01-01	27° 1'23.70"	142° 7'24.72"	145	TaM	2233
OUTGROUP TAXA (O.G.)						
Order Isopoda (suborder Asellota)						
<i>Asellus hilgendorffii</i> Bovallius, 1886	Hokkaido: Sarobetsu	45° 0'39.54"	141°43'56.00"	2	SH	1933
Order Isopoda (suborder Phreatoicidea)						
<i>Colubotelson thomsoni</i> Nicholls, 1944**	–	Dreyer and Wägele (2001)		–	–	2336

*Abbreviations: AK, Atsushi Kaneko; AY, Aska Yamaki; HY, Hiroshi Yamasaki; KK, Keiichi Kakui; SH, Shimpei Hiruta; YH, Yoshihiro Hayashi; NaM, TR/V Nagasaki-maru; SoM, R/V Soyo-maru; TaM, R/V Tansei-maru; ToM, TR/V Toyoshio-maru.

**Sequence data were obtained from NCBI.

Table 3. List of PCR and cycle sequencing (CS) primers used in this study for the 18S rRNA gene.

Marker	Primer name	Reaction	Primer sequence (in 5'-3' direction)	Direction	Source
18S rRNA	18S-a1F	PCR & CS	GGYGAAACCGYGAAWGGYTC	Forward	This study
	18S-F2	CS	CCTGAGAAACGGCTRCCACAT	Forward	Yamaguchi and Endo (2003)
	18S-b4F	CS	TGCGGTAAAAAGCTCGTAGTTG	Forward	This study
	18S-b4R	CS	TCCAACACGAGCTTTTAACC	Reverse	This study
	18S-F3	CS	GYGRTCAGATACCRCCSTAGTT	Forward	Yamaguchi and Endo (2003)
	18S-b6F	CS	CCTGCGGCTTAATTTGACTC	Forward	This study
	18S-a6R	CS	AACGGCCATGCACCAC	Reverse	This study
	18S-b8R	CS	TCTAAGGGCATCACAGACCTG	Reverse	This study
	18S-b8F	CS	GGTCTGTGATGCCCTTAGATG	Forward	This study
	18S-a9R	PCR & CS	CCTTGTTACGACTTTTAGTTCC	Reverse	This study

Table 4. Characteristics of the 18S sequence data set in this study. TS, total sites; VS, variable sites; PIS, parsimony informative sites (all after alignment).

Gene	TS	VS	PIS	Base frequencies				Compositional heterogeneity	
				%A	%C	%G	%T	χ^2	P
18S rRNA	1493	695	628	25.7	22.5	27.8	23.9	182.50 (df = 96)	0.0000003*

*Significant nucleotide compositional bias.

Table 5. Optimal substitution models for maximum-likelihood (ML) and Bayesian (BI) analyses of the 18S data set, selected by AIC and BIC in jModelTest, respectively. GTR, general time reversible model (Tavaré, 1986); TIM, transitional model (Posada, 2003); I, proportion of invariant sites; G, gamma distribution shape parameter.

Gene	Analysis	Model	I	G	Base frequencies	Rate matrix
18S rRNA	ML	GTR + I + G	0.3870	0.5530	A = 0.2538	A-C = 1.0755
					C = 0.2102	A-G = 1.6138
					G = 0.2781	A-T = 1.0827
					T = 0.2579	C-G = 0.6608
						C-T = 3.2468
	BI	TIM2 + I + G	0.3840	0.5490		G-T = 1.0000
					A = 0.2536	A-C = 1.3015
					C = 0.2044	A-G = 1.9324
					G = 0.2781	A-T = 1.3015
					T = 0.2638	C-G = 1.0000
						C-T = 3.9249
						G-T = 1.0000

structure of the gene predicted with CentroidFold (Sato et al., 2009), and all indels were removed from the data set. To determine whether nucleotide composition bias occurred among taxa, χ^2 goodness-of-fit tests were performed on the sequence data. In addition, to assess the effect of heterogeneity on phylogenetic inferences, two minimum evolution (ME; Rzhetsky and Nei, 1993) trees were constructed with the distance matrices calculated by using maximum composite likelihood model (Tamura et al., 2004) implemented in MEGA 4, assuming homogeneity or heterogeneity of base composition among lineages. ME trees were searched by closest neighbor interchange (CNI; Nei and Kumar, 2000) at a search level of 1. Bootstrap values (Felsenstein, 1985) for two ME trees were determined from 10000 pseudoreplicates. Aligned data were then imported into PAUP*4.0b (Swofford, 2002) for the maximum parsimony (MP) and maximum likelihood (ML) analyses.

Unweighted MP trees were obtained through 1000 heuristic search replicates, with starting trees generated by random sequence addition, followed by the tree bisection reconnection (TBR) branch swapping. Bootstrap values for MP tree were determined from 1000 pseudoreplicates, for each of which an MP tree was obtained through 100 heuristic search replicates with random sequence addition and TBR branch swapping.

ML trees were obtained by TBR branch swapping, starting with a topology given by neighbor-joining (NJ) method (Saitou and Nei,

1987). Parameters for the ML analysis were selected on the basis of the Akaike information criterion (AIC; Akaike, 1974) in jModelTest (Posada, 2008). Bootstrap values for the ML trees were calculated from 1000 pseudoreplicates analyzed by TBR searches, with the starting topology given by an NJ tree.

Finally, a Bayesian (BI) analysis was performed with MrBayes 3.1.2 (Huelsenbeck and Ronquist, 2001). Parameters for this analysis were selected by the Bayesian information criterion (BIC; Schwarz, 1978) test implemented in jModelTest. A Markov-Chain Monte-Carlo (MCMC) search was performed with four chains, each of which was run for 500000 generations. Trees were sampled every 100 generations. Topological convergence diagnostics for Bayesian analysis were performed with Tracer 1.5 (Rambaut and Drummond, 2009). The first 125000 generations were discarded as burn-in. A consensus of sampled trees was computed, and the posterior probability for each interior branch was obtained to assess the robustness of the inferred relationships.

RESULTS

The 18S sequences for the 29 studied species ranged in length from 1818 bp to 2909 bp, and were registered in the DDBJ/EMBL/

GenBank databases under accession numbers AB618174–618202. The sequences contained eight variable regions, corresponding to domains V2–9 in Gillespie et al. (2006); as with Spears et al. (2005), regions V4 and V7 were highly divergent among taxa. The aligned data set consisted of 1493 bp. Characteristics of the data set used in this study are given in Table 4. Optimal substitution models for the ML and BI analyses are given in Table 5. Although the χ^2 test for homogeneity in base frequency revealed significant compositional heterogeneity for the data (Table 4), there were no differences between two ME trees under the assumption of homogeneity or heterogeneity except for minor differences in bootstrap values (data not shown). Thus, compositional heterogeneity in this data set did not seem to be problematic.

A summary of optimality values for the MP, ME, and ML analyses of 18S rRNA is as follows: three MP trees were obtained (tree length = 2560, CI = 0.494, RI = 0.740); ME-score = 1.57582; $-\ln L = 13204.8889$.

The strict consensus of three MP trees, and the ME, ML, and BI trees, are shown in Figs. 2–5. In ME, ML, and BI trees, the branches in Apseudomorpha were generally

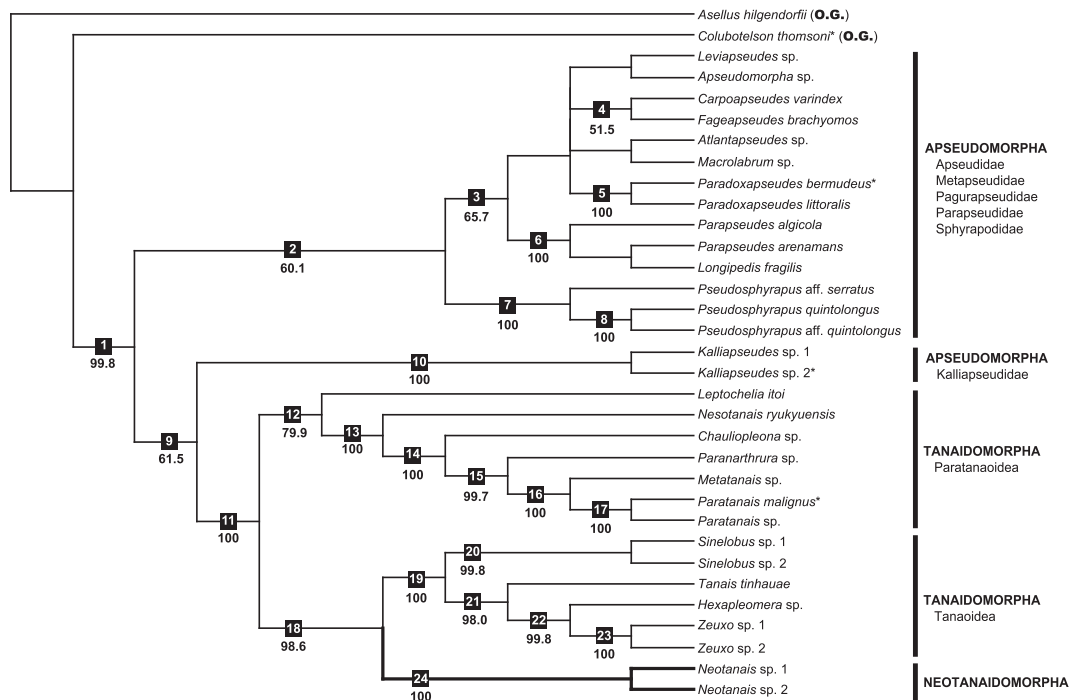


Fig. 2. Strict consensus of the three optimal maximum-parsimony trees (length = 2560) based on 18S rRNA gene sequence data. Bootstrap values > 50% are shown, determined by analysis of 1000 pseudoreplicates. Numbers in squares indicate clades with > 50% bootstrap support. An asterisk labeling a terminal taxon indicates the sequence was obtained from NCBI. (O.G.), outgroup taxon. Bold taxon names in all capital letters labeling sidebars indicate suborder names suggested by Sieg (1980b); below the suborder names are higher taxa represented in the clade. The clade in bold lines is Neotanaidae.

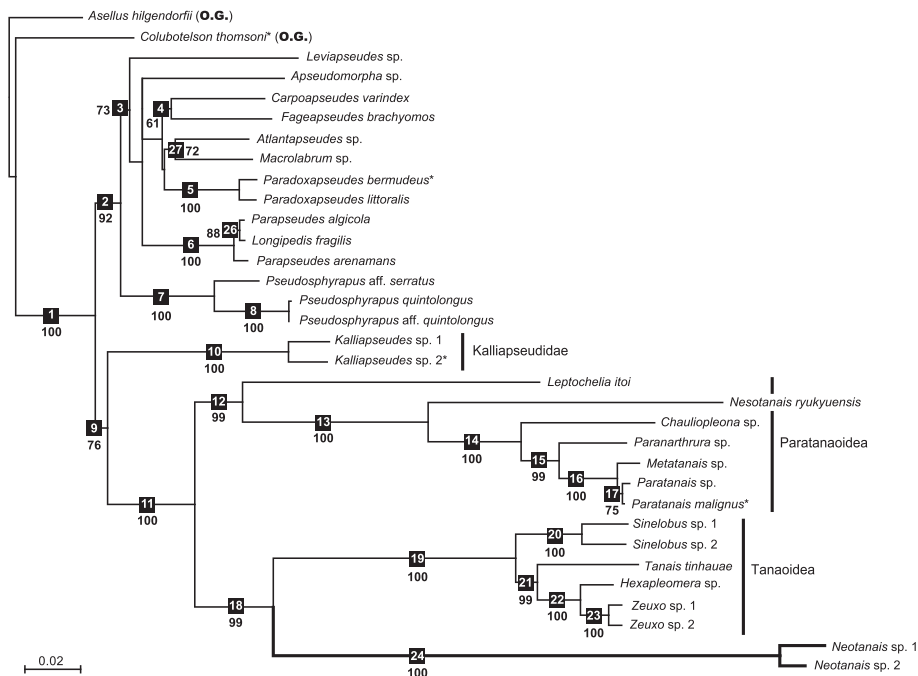


Fig. 3. Minimum-evolution tree based on 18S rRNA gene sequence data, constructed by the maximum composite likelihood method assuming heterogeneity (ME-score = 1.57582). Bootstrap values > 50% are shown, determined by analysis of 10000 pseudoreplicates. Numbers in squares indicate clades with > 50% bootstrap support. An asterisk labeling a terminal taxon indicates the sequence was obtained from NCBI. (O.G.), outgroup taxon. The taxon names labeling sidebars are superfamily or family names. The clade in bold lines is Neotanaidae (Neotanaidomorpha).

shorter than those in Tanaidomorpha and Neotanaidomorpha (Figs. 3–5). In all trees, Clade 12 contained all taxa included in Superfamily Paratanaoidea; Clade 18 comprised Tanaoidea + Neotanaidae (Clades 19 and 24, respectively) and formed the sister clade to Paratanaoidea (Clade 12). The position of Kalliapseudidae (Clade 10) differed among analyses. In the MP and ME trees (Figs. 2 and 3), Kalliapseudidae was included in Clade 9 with Tanaoidea, Paratanaoidea and Neotanaidae, which led Apseudomorpha to be non-monophyletic. In the ML and BI trees (Figs. 4 and 5), Kalliapseudidae was included in Clade 25 and formed the sister clade to other apseudomorphs (Clade 2). Family Sphyrapodidae (Clade 7) being the early offshoot in Clade 2 was supported in all trees. Within Clade 3, all analyses showed well-supported *Paradoxapseudes* and parapseudid clades (Clades 5 and 6, respectively). The positions of terminal taxa and of Clades 5 and 6 within Clade 2 were unstable among analyses.

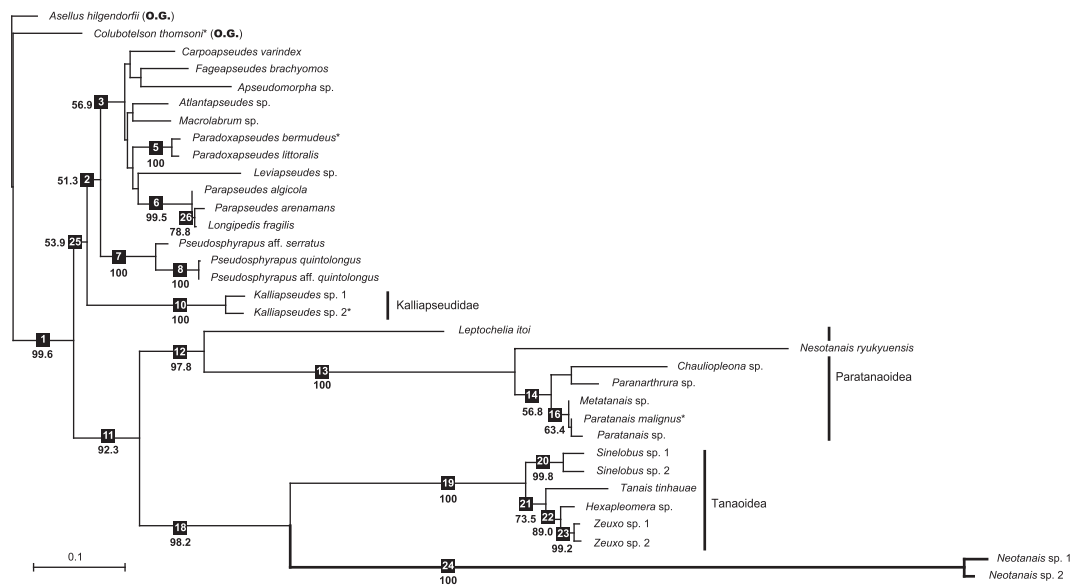


Fig. 4. Maximum-likelihood tree based on 18S rRNA gene sequence data, assuming the GTR + I + G substitution model (−lnL = 13204.8889). Bootstrap values > 50% are shown, determined by analysis of 1000 pseudoreplicates. Numbers in squares indicate clades with > 50% bootstrap support. An asterisk labeling a terminal taxon indicates the sequence was obtained from NCBI. (O.G.), outgroup taxon. The taxon names labeling sidebars are superfamily or family names. The clade in bold lines is Neotanaidae (Neotanaidomorpha).

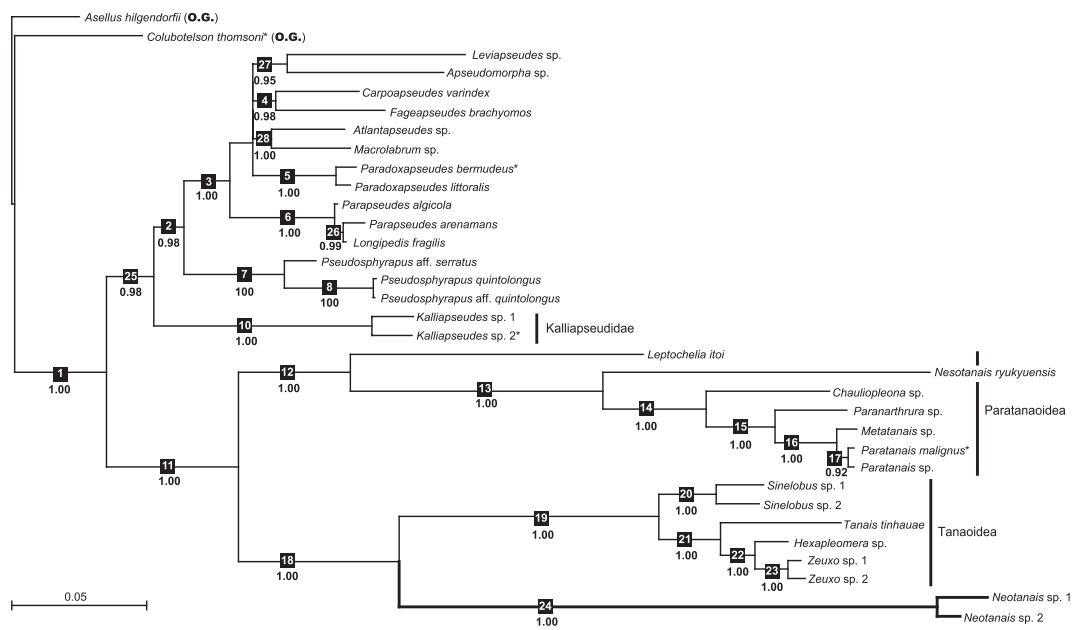


Fig. 5. Bayesian tree based on 18S rRNA gene sequence data, assuming the TIM2 + I + G substitution model. Bayesian posterior probability values > 0.90 are shown. Numbers in squares indicate clades with > 0.90 Bayesian posterior probability value. An asterisk labeling a terminal taxon indicates the sequence was obtained from NCBI. (O.G.), outgroup taxon. The taxon names labeling sidebars are superfamily or family names. The clade in bold lines is Neotanaidae (Neotanaidomorpha).

DISCUSSION

The results of our analyses generally indicated that Tanaidomorpha and Neotanaidomorpha are represented by relatively long branches, compared to Apseudomorpha (Figs. 3–5). That Neotanaidomorpha was nested within Tanaidomorpha (= Paratanaoidea + Tanaoidea) might seemingly be indicative of the long-branch attraction (LBA) artifact (Felsenstein, 1978). However, LBA is unlikely in

terms of the tree topology ((Neotanaidomorpha + Tanaoidea) + Paratanaoidea), because this relation was consistent among all the trees generated by MP, ME, ML, and BI, with high support values. The relationship ((Neotanaidomorpha + Tanaoidea) + Paratanaoidea) contradicts the three previous hypotheses (Fig. 1A–C), but is similar to schemes suggested by Lang (1956), Lauterbach (1970), and Gardiner (1975), in which Neotanaidae is related more closely to Tanaidomorpha than to Apseudomorpha.

Our results, in which Tanaidomorpha is paraphyletic, suggest that the currently accepted classification system for extant species should be amended. The relationship between Neotanaidomorpha and Tanaidomorpha is supported by the uniramous antennule, the mandible lacking the palp, the pereonite 1 not firmly joined with the carapace, and other features (see Lang, 1956; Lauterbach, 1970). At the same time, three taxa (Neotanaidae, Tanaoidea, and Paratanaoidea) within these two suborders are well distinguishable from each other by a number of morphological features, including the number of articles on the antennules and the antennae, and the presence or absence of the thoracic glands and the uropodal exopod. It is therefore reasonable to demote Suborder Neotanaidomorpha to Superfamily Neotanaoidea within Tanaidomorpha. Consequently, the classification system for extant Tanaidacea becomes a two-suborder, four-superfamily system. As the result of the demotion of Neotanaidomorpha, it is necessary to amend the diagnoses for Suborder Tanaidomorpha and its three superfamilies.

Amended diagnosis of Tanaidomorpha. Body cylindrical in cross-section. Pereonite 1 not firmly joined with carapace. Antennule uniramous; bases abutting (separate in *Allotanaïs* and *Langitanaïs*). Antenna without squama. Mandible without palp. Male with two genital cones (one cone in *Hexapleomera robusta* and *Pancoloides litoralis*).

Amended diagnosis of Tanaoidea. Eyes well defined, black (absent in *Protanaïs*). Pleonites 4 and 5, when present, are narrower than pleonites 1–3. Thoracic glands present. Antennule with three to five articles. Antenna with six to eight articles. Lacinia mobilis present on left and right mandibles. Maxillule with one endite, bearing palp. Maxilla rudimentary, oval-shaped. Maxilliped with coxae; maxillipedal coxae and bases unfused medially. Cheliped lacking ischium (present in several species of *Tanaïs*). Pereopods lacking ischium. Dactylus-unguis of pereopods 4–6 forming claw; claw bearing rows of spiniform setae. Pleopods three pairs. Uropod uniramous. Females with only one pair of sac-like oostegites, arising from coxae of pereopod 4.

Amended diagnosis of Paratanaoidea. Eyes present or absent. Pleon never with last two pleonites fused or reduced alone. Thoracic glands present. Antennule with five or fewer articles in female, often with more than five articles in male. Antenna with seven or fewer articles. Lacinia mobilis present on left mandible. Maxillule with one endite and palp bearing two terminal setae. Maxilla rudimentary, oval-shaped. Cheliped lacking ischium. Pereopods with ischium. Dactylus-unguis of pereopods 4–6 forming claw in several families, but lacking rows of spiniform setae. Pleopods zero or five pairs. Uropod uni- or biramous. Females with one or four pairs of flat oostegites.

Diagnosis of Neotanaoidea. Eyes absent. Pleon never with last two pleonites reduced alone; pleonite 5 sometimes fused to pleotelson. Thoracic glands absent. Antennule with seven or eight articles. Antenna with nine articles. Lacinia mobilis present on left mandible. Maxillule with two endites, lacking palp. Maxilla apseudomorph-shaped in female, simpler in male. Cheliped with ischium. Pereopods with ischium. Dactylus-unguis of pereopods 4–6 not forming claw; dactylus with rows of small spines. Pleopods five pairs. Uropod biramous. Female with four pairs of flat oostegites.

Monophyly of Apseudomorpha has been open to question, and will remain as is. Based on morphology, most tanaidacean researchers (e.g., Sieg, 1984; Larsen and Wilson, 2002) regarded the taxon as monophyletic, whereas Siewing (1953: p. 416) implied paraphyly. Drumm's (2010) recent molecular phylogenetic analysis indicated Apseudomorpha as monophyletic, although with relatively low support values. Our results were that Apseudomorpha was monophyletic in ML and BI, and paraphyletic in MP and ME. Future studies with more reliable molecular markers must clarify the phylogenetic status of this taxon.

Among 13 families of Apseudomorpha, Kalliapseudidae and Sphyrapodidae are unique in that they produce manca having an exopod each on pereopods 4 and 5 (cf. Hansknecht et al., 2002; Guțu, 2006). In the present analysis, Kalliapseudidae branched off earlier than the other apseudomorphs in ML and BI trees (Clade 2), as has been shown in a previous molecular phylogenetic study (Drumm, 2010). With MP and ME, Kalliapseudidae appeared as sister to Tanaidomorpha + Neotanaidae (Clade 11). Sphyrapodidae was a sister taxon to the rest of Apseudomorpha (Clade 3) in all the methods used in this study. Future analyses with denser taxon sampling are necessary to reveal the evolution of biramous appendages in Apseudomorpha.

This study is the first to use 18S sequence data and to include neotanaids to analyze tanaidacean phylogeny. It strongly indicates that Neotanaidae has been erroneously positioned in the previous classification. On the other hand, the 18S data failed to resolve relationships for apseudomorphs.

ACKNOWLEDGMENTS

KK thanks Drs. Susumu Ohtsuka of Hiroshima University (HU), Jun Hashimoto of Nagasaki University (NU), Asako K. Matsumoto of Tokyo University (TU), Hiroshi Namikawa of Showa Memorial Institute, and Ken Fujimoto and Takami Morita of National Research Institute of Fishery Science (NRIFS) for providing opportunities to join research cruises. KK also acknowledges the captains and crews of TR/V Nagasaki-maru of NU, R/V Soyo-maru of NRIFS, R/V Tansei-maru of Japan Agency for Marine-Earth Science and Technology (JAMSTEC), and TR/V Toyoshio-maru of HU, and researchers on the cruises, for kind cooperation in collecting specimens. KK is grateful to Drs. Masanori Nonaka and Atsushi Kaneko of Okinawa Churaumi Aquarium for permitting the collection of specimens of *Hexapleomera* sp. from a carapace of the loggerhead turtle bred in the aquarium. The following researchers provided samples used in this study: Drs. Yoshihiro Hayashi of Kochi Prefectural Fisheries Experimental Station, Mr. Masanori Okanishi of TU, Dr. Hiroshi Saito of National Museum of Nature and Science, Dr. Aska Yamaki of JAMSTEC, and Mr. Hiroshi Yamasaki of Hokkaido University. Dr. Michitaka Shimomura of Kitakyushu Museum of Natural History and Human History kindly identified isopods. This study was supported in part by a Grant-in-Aid from the Japan Society for Promotion of Science Fellows (No. 22-1119).

REFERENCES

- Akaike H (1974) A new look at the statistical model identification. *IEEE T Automat Contr* 19: 716–723
- Anderson G (2010) Tanaidacea Classification, January 18, 2010. <http://peracarida.usm.edu/TanaidaceaTaxa.pdf>.
- Băcescu M (1980) Contributions to the knowledge of some Kalliapseudidae (Crustacea, Tanaidacea) from the NW of the Indian Ocean. *Trav Mus Hist Nat Grigore Antipa* 22: 359–379

- Bamber RN (2007) Suborders Apseudomorpha Sieg, 1980 and Neotanaidomorpha Sieg, 1980. In "Tanaidacea (Crustacea: Peracarida) from Japan III. The Deep Trenches: The Kurile-Kamchatka Trench and Japan Trench. Zootaxa 1599" Ed by K Larsen, M Shimomura, Magnolia Press, Auckland, pp 13–40
- Bamber RN, Bird GJ (1997) Peracarid crustaceans from Cape d'Aguilar and Hong Kong, II. Tanaidacea: Apseudomorpha. In "The Marine Flora and Fauna of Hong Kong and Southern China IV" Ed by B Morton, Hong Kong University Press, Hong Kong, pp 87–102
- Bovallius C (1886) Notes on the family Asellidae. Bih Kgl Sv Vet-Akad Hdl 11: 1–54
- Dreyer H, Wägele J-W (2001) Parasites of crustaceans (Isopoda: Bopyridae) evolved from fish parasites: molecular and morphological evidence. Zoology 103: 157–178
- Drumm DT (2010) Phylogenetic relationships of Tanaidacea (Eumalacostraca: Peracarida) inferred from three molecular loci. J Crust Biol 30: 692–698
- Felsenstein J (1978) Cases in which parsimony or compatibility methods will be positively misleading. Syst Biol 27: 401–410
- Felsenstein J (1985) Confidence limits on phylogenies: an approach using the bootstrap. Evolution 39: 783–781
- Gardiner LF (1975) The systematics, postmarsupial development, and ecology of the deep-sea family Neotanaidae (Crustacea: Tanaidacea). Smithsonian Contrib Zool 170: 1–265
- Gillespie JJ, Johnston JS, Cannone JJ, Gutell RR (2006) Characteristics of the nuclear (18S, 5.8S, 28S and 5S) and mitochondrial (12S and 16S) rRNA genes of *Apis mellifera* (Insecta: Hymenoptera): structure, organization, and retrotransposable elements. Insect Mol Biol 15: 657–686
- Guțu M (2006) New Apseudomorph Taxa of the World Ocean: Crustacea, Tanaidacea. Curtea Veche, Bucharest, Romania
- Hansknacht T, Heard RW, Bamber R (2002) *Tanapseudes gutui*, a new species of apseudomorph Tanaidacea (Crustacea: Peracarida) from the Caribbean Sea and the taxonomic status of the family Tanapseudidae Bacescu, 1978. Gulf Caribb Res 14: 67–74
- Huelsenbeck JP, Ronquist F (2001) MrBayes: Bayesian inference of phylogenetic trees. Bioinformatics 17: 754–755
- Ishimaru S (1985) A new species of *Leptochelia* (Crustacea, Tanaidacea) from Japan, with a redescription of *Leptochelia savignyi* (Krøyer, 1842). Publ Seto Mar Biol Lab 30: 241–267
- Kakui K, Kajihara H, Mawatari SF (2007) Two new sphyrapodid species (Crustacea: Tanaidacea: Apseudomorpha) from southwestern Japan. Zootaxa 1563: 37–54
- Kakui K, Kajihara H, Mawatari SF (2010) A new species of *Nesotanais* Shiino, 1968 (Crustacea, Tanaidacea) from Japan, with a key to species and a note on male chelipeds. Zookeys 33: 1–17
- Kudinova-Pasternak RK (1972) Notes about the Tanaidacean fauna (Crustacea Malacostraca) of the Kermadec Trench. Complex Research of the Nature of the Ocean (Moscow) 3: 257–258
- Lang K (1956) Neotanaidae nov. fam., with some remarks on the phylogeny of the Tanaidacea. Arkiv för Zoologi, Ser 2 9: 469–475
- Larsen K (2001) Morphological and molecular investigation of polymorphism and cryptic species in tanaid crustaceans: implications for tanaid systematics and biodiversity estimates. Zool J Linn Soc 131: 353–379
- Larsen K (2005) Crustaceana Monographs 5. Deep-Sea Tanaidacea (Crustacea: Peracarida) from the Gulf of Mexico. Brill, Leiden
- Larsen K (2011) A new family, genus and species of apseudomorph Tanaidacea (Crustacea: Peracarida) from the Caribbean Sea. J Mar Biol Assoc UK, available on CJO doi:10.1017/S0025315411000221
- Larsen K, Shimomura M (2006) Tanaidacea (Crustacea: Peracarida) from Japan. I. Apseudomorpha from the East China Sea, Seto Inland Sea, and Nansei Islands. Zootaxa 1341: 29–48
- Larsen K, Shimomura M (2008) Tanaidacea (Crustacea: Peracarida) from Japan. IV. Shallow-water species from Akajima with notes on the recolonization potential of tanaids. Zootaxa 1678: 1–24
- Larsen K, Wilson GDF (2002) Tanaidacean phylogeny. The first step: The superfamily Paratanaidoidea. J Zool Sys Evol Res 40: 205–222
- Lauterbach K-E (1970) Der Cephalothorax von *Tanaïs cavolinii* Milne Edwards (Crustacea—Malacostraca). Ein Beitrag zur vergleichenden Anatomie und Phylogenie der Tanaidacea. Zool Jahrb Abt Anat Ontog 87: 94–204
- Malzahn E (1965) Eine neue fossile Scherenassel (*Ophthalapseudes friedericianus* nov. spec.) aus dem norddeutschen Dogger. Ann Naturhistor Mus Wien 68: 223–235+pls 1–4
- Martin JW, Davis GE (2001) An Updated Classification of the Recent Crustacea. Los Angeles, California
- Moore HF (1894) *Tanaïs robustus*, a new species of Anisopoda. P Acad Nat Sci Phila 46: 90–94
- Nei M, Kumar S (2000) Molecular Evolution and Phylogenetics. Oxford University Press, New York
- Nicholls GE (1944) The Phreatoicoidea: Part II. The Phreatoicoidea. Pap Proc R Soc Tasman 1943: 1–157
- Pires AMS (1987) *Potiicoara brasiliensis*: a new genus and species of Spelaeogriffacea (Crustacea: Peracarida) from Brazil with a phylogenetic analysis of the Peracarida. J Nat Hist 21: 225–238
- Posada D (2003) Using Modeltest and PAUP* to select a model of nucleotide substitution. In "Current Protocols in Bioinformatics" Ed by AD Baxevanis, DB Davison, RDM Page, GA Petsko, LD Stein, GD Stormo, pp 6.5.1–6.5.14
- Posada D (2008) jModelTest: Phylogenetic Model Averaging. Mol Biol Evol 25: 1253–1256
- Rambaut A, Drummond AJ (2009) Tracer v1.5. <http://tree.bio.ed.ac.uk/software/tracer/> [accessed on 8.XI.2010]
- Richter S, Scholtz G (2001) Phylogenetic analysis of the Malacostraca (Crustacea). J Zool Sys Evol Res 39: 113–136
- Rzhetsky A, Nei M (1993) Theoretical foundation of the minimum-evolution method of phylogenetic inference. Mol Biol Evol 10: 1073–1095
- Saitou N, Nei M (1987) The neighbor-joining method: a new methods for reconstructing phylogenetic trees. Mol Biol Evol 4: 406–425
- Sars GO (1882) Revision af gruppen: Isopoda chelifera med karakteristik af nye herhen Hørende Arter og Slægter. Arch Math Naturv 7: 1–54
- Sato K, Hamada M, Asai K, Mituyama T (2009) CENTROIDFOLD: a web server for RNA secondary structure prediction. Nucleic Acids Res 37 suppl 2: W277–W280
- Schram FR, Sieg J, Malzahn E (1986) Fossil Tanaidacea. Trans San Diego Soc Nat Hist 21: 127–144
- Schwarz G (1978) Estimating the dimension of a model. Ann Stat 6: 461–464
- Shiino SM (1952) A new genus and two new species of the order Tanaidacea found at Seto. Publ Seto Mar Biol Lab 2: 53–68
- Sieg J (1980a) Taxonomische Monographie der Tanaidae Dana 1849 (Crustacea: Tanaidacea). Abh Senckenb Natforsch Ges 537: 1–267
- Sieg J (1980b) Sind die Dikonophora eine polyphyletische Gruppe? Zool Anz 205: 401–416
- Sieg J (1984) Neuere Erkenntnisse zum natürlichen System der Tanaidacea. Eine phylogenetische Studie. Zoologica 136: 1–132
- Siewing R (1953) Morphologische Untersuchungen an Tanaidaceen und Lophogastriden. Z Wiss Zool 157: 333–426
- Siewing R (1963) Studies in malacostracan morphology: results and problems. In "Phylogeny and Evolution of Crustacea" Ed by HB Whittington, WD Rolfe, Museum of Comparative Zoology, Cambridge, pp 85–103
- Spears T, DeBry RW, Abele LG, Chodyla K (2005) Peracarid mono-

- phyly and interordinal phylogeny inferred from nuclear small-subunit ribosomal DNA sequences (Crustacea: Malacostraca: Peracarida). *Proc Biol Soc Wash* 118: 117–157
- Swofford DL (2002) PAUP*. Phylogenetic Analysis Using Parsimony (*and other methods). Version 4. Sinauer Associates, Sunderland, Massachusetts
- Tamura K, Nei M, Kumar S (2004) Prospects for inferring very large phylogenies by using the neighbor-joining method. *Proc Natl Acad Sci USA* 101: 11030–11035
- Tamura K, Dudley J, Nei M, Kumar S (2007) MEGA: Molecular Evolutionary Genetics Analysis (MEGA) Software Version 4.0. *Mol Biol Evol* 24: 1596–1599
- Tavaré S (1986) Some probabilistic and statistical problems in the analysis of DNA sequences. In “Some mathematical questions in biology—DNA sequence analysis” Ed by RM Miura, American Mathematical Society, pp 57–86
- Thompson JD, Higgins DG, Gibson TJ (1994) CLUSTAL W: improving the sensitivity of progressive multiple sequence alignment through sequence weighting, position—specific gap penalties and weight matrix choice. *Nucleic Acids Res* 22: 4673–4680
- Untergasser A, Nijveen H, Rao X, Bisseling T, Geurts R, Leunissen JAM (2007) Primer3Plus, an enhanced web interface to Primer3. *Nucleic Acids Res* 35: W71–W74
- Vanhöffen E (1914) Die Isopoden der deutschen Südpolar Expedition 1901–1903. In “Deutschen Südpolar-Expedition 1901–1903 im Auftrage des Reichsministeriums de Innern 15” Ed by E von Drygalski, pp 447–598
- Wilson GDF (2009) The phylogenetic position of the Isopoda in the Peracarida (Crustacea: Malacostraca). *Arthropod Syst Phyl* 67: 159–198
- Yamaguchi S, Endo K (2003) Molecular phylogeny of Ostracoda (Crustacea) inferred from 18S ribosomal DNA sequences: implication for its origin and diversification. *Mar Biol* 143: 23–38

(Received February 20, 2011 / Accepted March 28, 2011)