



## Effects of Wolbachia on rDNA-ITS2 variation and evolution in natural populations of *Tetranychus urticae* Koch

Authors: Su, Hong-Hua, Jiang, Feng, Yu, Ming-Zhi, Yang, Xian-Ming, Yang, Yi-Zhong, et al.

Source: Systematic and Applied Acarology, 17(1) : 45-52

Published By: Systematic and Applied Acarology Society

URL: <https://doi.org/10.11158/saa.17.1.9>

---

BioOne Complete ([complete.BioOne.org](https://complete.BioOne.org)) is a full-text database of 200 subscribed and open-access titles in the biological, ecological, and environmental sciences published by nonprofit societies, associations, museums, institutions, and presses.

Your use of this PDF, the BioOne Complete website, and all posted and associated content indicates your acceptance of BioOne's Terms of Use, available at [www.bioone.org/terms-of-use](https://www.bioone.org/terms-of-use).

Usage of BioOne Complete content is strictly limited to personal, educational, and non-commercial use. Commercial inquiries or rights and permissions requests should be directed to the individual publisher as copyright holder.

---

BioOne sees sustainable scholarly publishing as an inherently collaborative enterprise connecting authors, nonprofit publishers, academic institutions, research libraries, and research funders in the common goal of maximizing access to critical research.

## Article

## Effects of *Wolbachia* on rDNA-ITS2 variation and evolution in natural populations of *Tetranychus urticae* Koch

HONG-HUA SU<sup>1</sup>, FENG JIANG<sup>1</sup>, MING-ZHI YU<sup>2</sup>, XIAN-MING YANG<sup>2</sup>, YI-ZHONG YANG<sup>1</sup> & XIAO-YUE HONG<sup>2\*</sup>

<sup>1</sup>College of Horticulture and Plant Protection, Yangzhou University, Yangzhou, Jiangsu 225009, China

<sup>2</sup>Department of Entomology, Nanjing Agricultural University, Nanjing, Jiangsu 210095, China

\* Corresponding author: E-mail: xyhong@njau.edu.cn

### Abstract

In this study, rDNA-ITS2 was sequenced and analyzed to investigate the effect of *Wolbachia* on the rDNA of four populations of *Tetranychus urticae* Koch. The result showed that all four populations of *T. urticae* were infected with two strains of *Wolbachia*. They are wUrtOri1 (HM486515–HM486517) and wUrtCon1 (HM486518), belonging to the Ori group and Con group of B supergroup, respectively. There was one mutation site among 645 sites for the ITS2 fragments. All the sequenced ITS2 were classified into two haplotypes. The diversity analysis of ITS2 sequences of individuals showed that infection by *Wolbachia* did not significantly change the diversity of rDNA. A neutrality test using ITS2 indicated that the population of *T. urticae* has remained stable during evolution and is not off the Hardy-Weinberg equilibrium.

**Key words:** *Tetranychus urticae* Koch, *Wolbachia*, rDNA diversity, neutrality test

### Introduction

The two-spotted spider mite, *Tetranychus urticae* Koch (Acari: Tetranychidae), is an important agricultural pest that can feed on about 1200 host plant species, among which more than 150 are economically important (Badawy *et al.* 2010). It mainly damages vegetables, fruit trees, cotton, soybean, maize and ornamental crops worldwide (Miao *et al.* 2006; Badawy *et al.* 2010). Its high reproductive potential and short life cycle allow it to quickly develop resistance to many acaricides (Nicastro *et al.* 2010). It is estimated that *T. urticae* has developed resistance to more than 80 acaricides in 60 countries (Badawy *et al.* 2010). It is the most damaging mite species on agricultural crops and fruit trees (Miao *et al.* 2006).

*Wolbachia* is a very common cytoplasmic symbiont and is maternally inherited (Zhou *et al.* 1998; Hurst *et al.* 1999). It can infect insects, crustaceans, filarial nematodes and mites at rates of 16% to 76% (Miao *et al.* 2006). *Wolbachia* has evolved a large scale of host manipulations such as parthenogenesis induction (Stouthamer *et al.* 1993; Arakaki *et al.* 2001), feminization (Bouchon *et al.* 1998; Hiroki *et al.* 2002), male killing (Hurst *et al.* 1999) and crossing incompatibility which is the most common effect between infected males and uninfected females (Perrot-Minnot *et al.* 1996; Breeuwer 1997; Dobson *et al.* 2001). *Wolbachia* can affect the development and propagation of arthropod hosts (Wang *et al.* 2010).

Both mitochondrial DNA (mtDNA) and nuclear ribosomal DNA (rDNA) are widely used for population genetic studies. Hillis & Dixon (1991) were the first to use rDNA for phylogenetic analysis, subsequently rDNA was widely used in many studies on evolution and taxonomy for

insects. Several studies showed that *Wolbachia* have an indirect impact on the DNA diversity of mtDNA of their hosts due to a selective sweep of the mitotype associated with the infection and (or) natural selection acting on *Wolbachia* (Jiggins 2003; Shoemaker *et al.* 2003; Yu *et al.* 2011). But few studies focused on the impacts of *Wolbachia* on the rDNA markers. With the accumulation of mtDNA sequences, it's important to obtain information about rDNA to more precisely learn the evolution together with mtDNA information.

In this study, rDNA -ITS2 (internal transcribed spacer 2) was sequenced from 80 female spider mites across 4 populations to examine the rDNA-ITS2 diversity and investigate the association between *Wolbachia* and rDNA of *T. urticae* Koch.

## Materials and methods

### Animals and Tissues

*T. urticae* were collected from *Solanum melongena* L. in 4 regions of 3 provinces, China. Locations, host plants, collection dates and abbreviations are summarized in Table 1. DNA was isolated immediately once mites were taken to the laboratory or the samples were kept at -70°C until use.

Forty female adults were randomly selected from each geographical population to conduct the PCR amplification.

**TABLE 1.** Collection location, host plant and collection date of *Tetranychus urticae* from China.

Collection location	Abbreviation	Host plant	Collection date	Latitude	Longitude
Yantai, Shandong	YT	<i>Solanum melongena</i> L.	Aug., 2008	37.52°N	121.39°E
Taian, Shandong	TA	<i>S. melongena</i> L.	Aug., 2008	36.18°N	117.13°E
Kunming, Yunnan	KM	<i>S. melongena</i> L.	Aug., 2009	25.05°N	102.70°E
Huhhot, Inner Mongolia	HHHT	<i>S. melongena</i> L.	Aug., 2009	40.48°N	111.41°E

### DNA extraction

Total DNA was extracted from individual adult females using protocols described in Xie *et al.* (2008). In every sampled locality, three individuals were sequenced.

### Amplification of *wsp* gene in *Wolbachia* and ITS2 in *T. urticae*

A fragment in the *wsp* gene of about 596bp was amplified from the DNA with the specific primers (81F: 5'-TGGTCCAATAAGTGATGAAGAAAC-3'; 691R: 5'-AAAAATTAAACGCTACTCCA-3') (Zhou *et al.* 1998). The amplification reactions were performed in a 50µL volume containing 4µL DNA template solution, 28.6µL ddH<sub>2</sub>O, 5µL 10×buffer, 5µL MgCl<sub>2</sub> (25 mmol/L), 4µL dNTPs (10mmol/L each), 0.4µL Taq DNA polymerase (5U/µ, TaKaRa, Dalian), 1.5µL each primer (20 µmol/L each) according to the following schedule: 4 minutes at 94°C followed by 30 cycles at 94°C (1 minute), 53°C (1 minute), 72°C (1 minute).

A 645bp fragment of ITS2 was amplified from the DNA with the specific primers (ITS2-S:5'-ATATGCTTAAATTCAGCGGG-3';ITS2-A: 5'-GGGTCGATGAAGAACGCAGC-3'.) The primers were defined in the highly conserved 5.8S and 28S flanking regions as previously published in Navajas *et al.* (1994). The amplification reactions were performed in a 50µL volume containing

2 $\mu$ L DNA template solution, 30.6 $\mu$ L ddH<sub>2</sub>O, 5 $\mu$ L 10 $\times$ buffer, 5 $\mu$ L MgCl<sub>2</sub> (25 mmol/L), 4 $\mu$ L dNTPs (10mmol/L each), 0.4 $\mu$ L Taq DNA polymerase (5U/ $\mu$ , TaKaRa, Dalian), 1.5 $\mu$ L each primer (20  $\mu$ mol/L each) according to the following schedule: 4 minutes at 94 $^{\circ}$ C followed by 30 cycles at 94 $^{\circ}$ C (1 minute), 53 $^{\circ}$ C (1 minute), 72 $^{\circ}$ C (1 minute).

The PCR products of the appropriate sizes were gel-purified with the DNA Gel Extraction Kit (Tiangen Biotech, Beijing), cloned into T-easy vector (Promega USA), transformed into *Escherichia coli DH5 $\alpha$*  and sequenced in the gene-sequencing company (Bioasia company).

#### Gene sequencing and sequence analysis

Three samples from each geographical population infected with *Wolbachia* were randomly chosen to sequence. DNA sequences were submitted to the GenBank database and compared online with the published sequences by similarity search engines such as BLAST in NCBI Web, and the identical sequences were used as the standard. Clustal X computer program (Thompson *et al.* 1997) was used to align the *wsp* gene of *T. urticae* infected with *Wolbachia* sequenced in our research with the published *wsp* genes of other mites in Tetranychidae. Analysis of genetic and phylogenetic relationships was performed using MEGA2.1 (Kumar *et al.* 2001). Genetic relationships among every geographical population were estimated based on the distance using the Kimura-2 Parameter method. Phylogenetic trees were constructed by the Neighbor-Joining (NJ) method. Confidence levels for NJ tree were assessed by bootstrapping from 1000 pseudo-replications.

According to detection results of the infection with *Wolbachia*, ten female adults infected with *Wolbachia* and ten which were not infected were chosen from each geographical population. And the DNA isolated from each individual was used as the template to amplify ITS2 fragment with the designed primers (ITS2-S and ITS2-A). Thus, eighty ITS2 sequences were obtained. Haplotype analysis was conducted using TCS1.21 software (Clement *et al.* 2000).

#### ITS2 sequence diversity and evolution analysis

Haplotype diversity (Hd), nucleotide diversity ( $\pi$ ) and average difference of nucleic acid (k) were chosen to determine the differences of ITS2 sequences between *T. urticae* infected with *Wolbachia* and those uninfected. A neutrality test was conducted in order to learn the evolution of ITS2 sequences. All the calculations were performed in the program DnaSP5.10 (Pablo & Rozas, 2009).

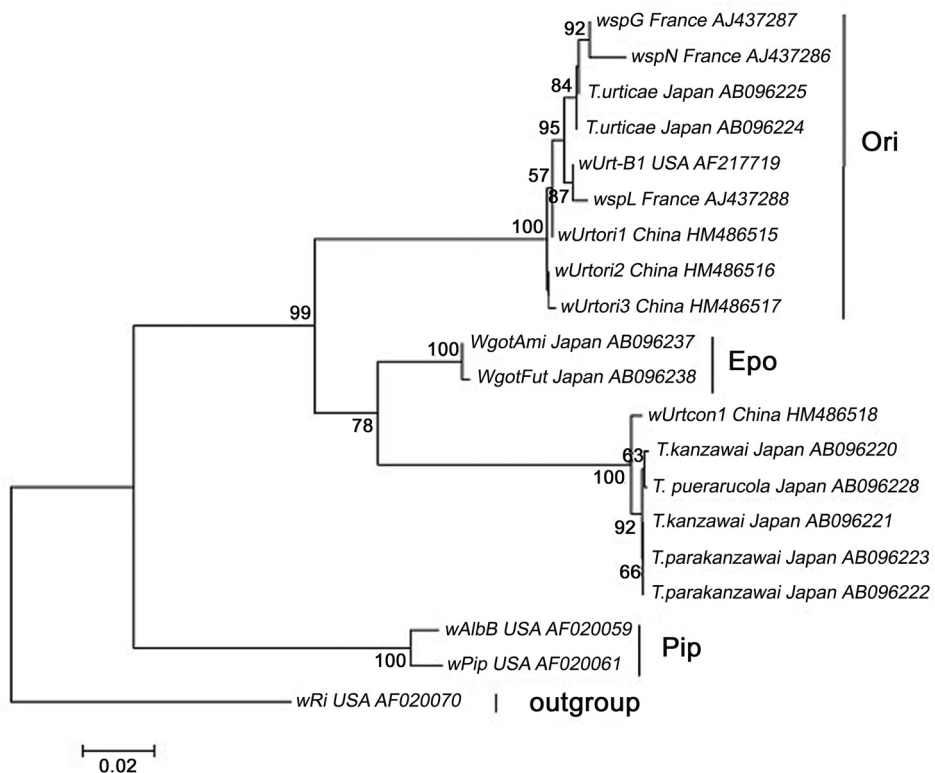
## Results

#### Infection with *Wolbachia*

PCR results showed that all four geographical populations of *T. urticae* were infected with *Wolbachia* at an average intraspecific infection rate of 50.4%. Among the four populations, the HHHT and TA populations were infected with the highest rate of 60%, and the infection rate of the YT population was the lowest at 27.5% (Table 2). The four populations were infected with two strains of *Wolbachia* belonging to the Ori group and Con group of B supergroup, respectively, that is, *wUrtOri1* (HM486515- HM486517) and *wUrtCon1*(HM486518) (Figure 1).

**TABLE 2.** Infection rates of four geographical populations of *T. urticae* with *Wolbachia*. Forty female adults were checked for each population.

Geographical Population	Abbreviation	No. infected	Infection Rate (%)	GenBank Accession number
Huhhot, Inner Mongolia	HHHT	24	60	HM486515
Yantai, Shandong	YT	11	27.5	HM486516
Tai'an, Shandong	TA	24	60	HM486517
Kunming, Yunnan	KM	19	47.5	HM486518



**FIGURE 1.** Phylogenetic tree of *wsp* genes of four geographical populations of *T. urticae* with other reported Tetranychidae

Alignment of 80 ITS2 gene sequences showed that there were no base insertions or deletions, and that there was just one mutable site (Fig. 2). The 80 ITS2 sequences were classified into 2 haplotypes (Fig. 3).

#### ITS2 sequence diversity and its evolution analysis

Hd,  $\pi$  and k of ITS2 from *T. urticae* individuals infected with *Wolbachia* were all lower than those of ITS2 from *T. urticae* individuals uninfected with *Wolbachia*, and the differences were not significant. Neutrality tests showed that Tajima'D and Fu&Li'F values fluctuated around 0.

```

          *      20      *      40      *      60      *      80      *
YT : ..... : 97
TA : ..... : 97
HHHT : ..... : 97
KM : ..... : 97
YT : ..... : 97
TA : ..... : 97
HHHT : ..... : 97
KM : ..... : 97
      TAGCTACGATAATCGGTGCGAATTGCAGGACACGCCGAGCACTTGAGCTTCCAACGCACATTGCGGCTTTCCGGTCTTTCCGAGGTACACATCTGTC

          100      *      120      *      140      *      160      *      180      *
YT : ..... : 194
TA : ..... : 194
HHHT : ..... : 194
KM : ..... : 194
YT : ..... : 194
TA : ..... : 194
HHHT : ..... : 194
KM : ..... : 194
      TGAGAGTTGAGATGTAAAAATAATCAACAAAACACTTGCATACTACCATATATGCATTGTTTTGAGAGGATTGTATATTTATATGCATGAATCTTGAT

          200      *      220      *      240      *      260      *      280      *
YT : ..... : 291
TA : ..... : 291
HHHT : ..... : 291
KM : ..... : 291
YT : ..... : 291
TA : ..... : 291
HHHT : ..... : 291
KM : ..... : 291
      GTTTTATTCCTTTTCTTAATTGCAATTCGTTGCAATTTAGTAAGGAGAACTCAAATCTACTTGTTCACATGATAAATTTGTGTACAATGCATAT

          300      *      320      *      340      *      360      *      380
YT : ..... : 388
TA : ..... : 388
HHHT : ..... : 388
KM : ..... : 388
YT : ..... : 388
TA : ..... : 388
HHHT : ..... : 388
KM : ..... : 388
      TTCATCTCTGCAAGCAGTATATATGAATAGATACTAGCATGAGATTCTAAGGTTAGTCGCCATCTGACGACGCTAAAGTCGTATTGCAGATAACTA

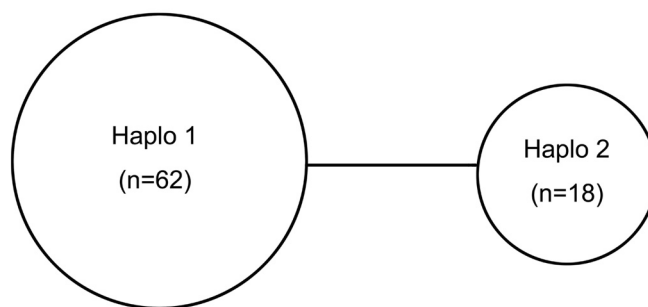
          *      400      *      420      *      440      *      460      *      480
YT : ..... : 485
TA : ..... : 485
HHHT : ..... : 485
KM : ..... : 485
YT : ..... : 485
TA : ..... : 485
HHHT : ..... : 485
KM : ..... : 485
      TGATGATCAACTAACCTGTTAACTGATGAATCTTCTTGCACTTGTATAAATCGTACAAATAGTAGCTATTCATGCTGTTAAAGCAGACCTAAGAAG

          *      500      *      520      *      540      *      560      *      580
YT : ..... : 582
TA : ..... : 582
HHHT : ..... : 582
KM : ..... : 582
YT : ..... : 582
TA : ..... : 582
HHHT : ..... : 582
KM : ..... : 582
      TAATGCAAAGGCAAAATTTGTGCAAAACATTAAGTAGATTTACGTTGCTTGCTTGCAAAACACACAAATAAACATTAATCAACTTAATCAATATTTT

          *      600
YT : ..... : 605
TA : ..... : 605
HHHT : ..... : 605
KM : ..... : 605
YT : ..... : 605
TA : ..... : 605
HHHT : ..... : 605
KM : ..... : 605
      TGATCTCAGATCAGGTGAGGTTA

```

**FIGURE 2.** Mutation sites of ITS2 in *T. urticae*.



**FIGURE 3.** Haplotype network of ITS2 sequences in *T. urticae*

\*Cycle and square frame represent haplotypes. Area size indicated the number of haplotypes, and the connecting line presented one mutation step.

**TABLE 3.** ITS2 diversity analysis of four geographic populations of *T. urticae*.

Population	<i>Wolbachia</i> strain	Infection status <sup>a</sup>	Molecular diversity			Neutrality test	
			Hd	$\pi$	k	Tajima'D	Fu & Li'F
HHHT	wUrtOri1/	W	0.328	0.00047	0.328	0.56544	0.65111
YT						P>0.10	P>0.10
TA	wUrtCon1	U	0.364	0.00545	0.364	0.77738	0.56618
KM						P>0.10	P>0.10

a: W and U indicate infected and uninfected with *Wolbachia*

## Discussion

### Infection rate with *Wolbachia* changed

In California, USA, the rate of spread of *Wolbachia* in populations of *Drosophila simulans* was greater than 100 km/year and populations with lower infected rates were commonly infected within 3 years (Turelli & Hoffmann 1991). Similarly, Gotoh *et al.* (2003, 2007) found the CI-*Wolbachia* strains were widespread in Japan and no geographical trend was observed in the CI-*Wolbachia*. We found that all four populations of *T. urticae* were infected with *Wolbachia* at an average infection rate of 50.4%, while Miao *et al.* (2006) found that the average infection rate of *Wolbachia* in *T. urticae* in a Chinese population was 36.5%, suggesting that *Wolbachia* infections are increasing.

### ITS2 sequence analysis

The ITS2 sequence analysis showed that Haplo1 was the most common haplotype and Haplo2 was mutated from Haplo1 (Fig. 3). The fact that there were just two haplotypes in the 80 individuals of *T. urticae* suggests that ITS2 is a poor marker for studies of population genetics. An analogous situation was observed in *Tetranychus evansi* (Boubou *et al.* 2011).

### ITS2 sequence diversity and an analysis of ITS2 evolution

Mitochondrial types were different in different *Drosophila* species. Seven major haplotypes have been described, one (*me*) in *D. melanogaster*, three in *D. simulans* (*si I*, *siII*, *siIII*), two in *D. mauritiana* (*maI*, *maII*), and *D. sechellia* (*se*). Different *Wolbachia* strains infect cytoplasm harboring different mtDNA types (Solignac 2004). However, in this study, no significant differences between Hd,  $\pi$  and k of ITS2 were observed between infected and uninfected individuals, indicating

that infection by *Wolbachia* does not significantly affect population rDNA. This may be because both *Wolbachia* and mitochondria are maternally inherited, which might lead to a direct influence of *Wolbachia* on mitochondria. But rDNA is not maternally inherited. So the influence of *Wolbachia* on rDNA is different. Or mtDNA is different from rDNA with respect to adaptation to *Wolbachia*.

Deleterious mutations are thought to remain in a population at a rather low rate due to the negative selection or purifying selection, and therefore the value of D and Fu is negative. When some allelic genes are under positive selection in the population, the ratio of neutral or deleterious mutations for those genes closely linked to the allelic gene will also increase in the population with the increase of the allele proportion, a process called hitchhiking or selective sweep (Barton 2000). The D test and Fu test are both significantly negative, which might result from negative selection, hitchhiking, a bottleneck undergone by the population or extensive base insertion or loss (Tajima 1989). When the population is under balancing selection, two or several alleles with high frequency will occur in the population, and the values of D and Fu tests will be positive. In this study, the Tajima' D and Fu & Li' F values both fluctuated around 0, suggesting that *T. urticae* populations remain stable during the evolution process without the influence of selective sweep from *Wolbachia*, suggesting that the population is not off balance.

## Acknowledgements

We would like to thank Jing-Tao Sun and Rong-Rong Xie of the Department of Entomology, Nanjing Agricultural University for help with the collection of spider mites. This study was supported in part by a Special Fund for Agro-Scientific Research in the Public Interest (No. 201103020) from the Ministry of Agriculture of China, a Grant-in-aid from the National Basic Science Program of China (973 Program, No. 2009CB119202), a Grant-in-Aid for Scientific Research (No. 31172131 and No. 30871635) from the National Natural Science Foundation of China, and Doctoral Fund of Young Scholar from the Ministry of Education, China (No. 20093250120003) for Su HH.

## References

- Arakaki, N., Miyoshi, T. & Noda, H. (2001) *Wolbachia*-mediated parthenogenesis in the predatory thrips *Franklinothrips vespiformis* (Thysanoptera: Insecta). *Proceedings of the Royal Society of London. Series B: Biological Sciences*, 268, 1011–1016.
- Badawy, M.E.I., El-Arami, S.A.A. & Abdelgaleil, S.A.M. (2010) Acaricidal and quantitative structure activity relationship of monoterpenes against the two-spotted spider mite, *Tetranychus urticae*. *Experimental and Applied Acarology*, 52, 261–274.
- Barton, N.H. (2000) Genetic hitchhiking. *Philosophical Transactions of the Royal Society of London. Series B: Biological Sciences*, 355, 1553–1562.
- Boubou, A., Migeon, A., Roderick, G. & Navajas, M. (2011) Recent emergence and worldwide spread of the red tomato spider mite, *Tetranychus evansi*: genetic variation and multiple cryptic invasions. *Biological Invasions*, 13, 81–92.
- Bouchon, D., Rigaud, T. & Juchault, P. (1998) Evidence for widespread *Wolbachia* infection in isopod crustaceans: molecular identification and host feminization. *Proceedings of the Royal Society of London. Series B: Biological Sciences*, 265, 1081–1090.
- Breeuwer, J.A.J. (1997) *Wolbachia* and cytoplasmic incompatibility in the spider mites *Tetranychus urticae* and *T. turkestani*. *Heredity*, 79, 41–47.
- Clement, M., Poseda, D. & Crandall, K.A. (2000) TCS: a computer program to estimate genealogies. *Molecular Ecology*, 9, 1657–1660.
- Dobson, S.L., Marsland, E.J. & Rattanadechakul, W. (2001) *Wolbachia*-induced cytoplasmic incompatibility in single- and superinfected *Aedes albopictus* (Diptera: Culicidae). *Journal of Medical Entomology*, 38,



382–387.

- Gotoh, T., Noda, H. & Hong, X.-Y. (2003) *Wolbachia* distribution and cytoplasmic incompatibility based on a survey of 42 spider mite species (Acari: Tetranychidae) in Japan. *Heredity*, 91, 208–216.
- Gotoh, T., Sugawara, J., Noda, H. & Kitashima, Y. (2007) *Wolbachia*-induced cytoplasmic incompatibility in Japanese populations of *Tetranychus urticae* (Acari: Tetranychidae). *Experimental and Applied Acarology*, 42, 1–16.
- Hillis, D. M. & Dixon, M.T. (1991) Ribosomal DNA: molecular evolution and phylogenetic inference. *The Quarterly Review of Biology*, 66, 411–453.
- Hiroki, M., Kato, Y., Kamito, T. & Miura, K. (2002) Feminization of genetic males by a symbiotic bacterium in a butterfly, *Eurema hecabe* (Lepidoptera: Pieridae). *Naturwissenschaften*, 89, 167–170.
- Hurst, G.D.D., Jiggins, F.M., Schulenburg J.H. G., Bertrand, D., West, S. A., Goriacheva, I.I., Zakharov, I.A., Werren, J.H., Stouthamer, R. & Majerus, M.E.N. (1999) Male-killing *Wolbachia* in two species of insect. *Proceedings of the Royal Society of London. Series B: Biological Sciences*, 266, 735–740.
- Jiggins, F. M. (2003) Male-killing *Wolbachia* and mitochondrial DNA: selective sweeps, hybrid introgression and parasite population dynamics. *Genetics*, 164, 5–12.
- Kumar, S., Tamura, K., Jakobsen, I.B. & Nei, M. (2001) MEGA2: molecular evolutionary genetics analysis software. *Bioinformatics*, 17, 1244–1245.
- Miao, H., Hong, X.-Y., Xie, L., Xue, X.-F. & Zhang, C.-L. (2006) Sequencing and sequence analysis of the *wsp* gene of *Wolbachia* in *Tetranychus urticae* Koch (Acari: Tetranychidae). *Acta Entomologica Sinica*, 49, 146–153.
- Navajas, M., Gutierrez, J., Bonato, O., Bolland, H.R. & Mapangou-Divassa, S. (1994) Intraspecific diversity of the cassava green mite *Mononychellus progresivus* (Acari: Tetranychidae) using comparisons of mitochondrial and nuclear ribosomal DNA sequences and cross-breeding. *Experimental and Applied Acarology*, 18, 351–360.
- Nicastro, R.L., Sato, M.E. & Da Silva, M.Z. (2010) Milbemectin resistance in *Tetranychus urticae* (Acari: Tetranychidae): selection, stability and cross-resistance to abamectin. *Experimental and Applied Acarology*, 50, 231–241.
- Pablo, L. & Julio, R. (2009) DnaSP v5: A software for comprehensive analysis of DNA polymorphism data. *Bioinformatics*, 25, 1451–1452.
- Perrot-Minnot, M.J., Guo, L.R. & Werren, J.H. (1996) Single and double infections with *Wolbachia* in the parasitic wasp *Nasonia vitripennis*: effects on compatibility. *Genetics*, 143, 961–972.
- Shoemaker, D.D., Keller, G. & Ross, K.G. (2003) Effects of *Wolbachia* on mtDNA variation in two fire ant species. *Molecular Ecology*, 12, 1757–1771.
- Solignac, M. (2004) Mitochondrial DNA in the *Drosophila melanogaster* complex. *Genetica*, 120, 41–50.
- Stouthamer, R., Breeuwer, J.A.J., Luck, R.F. & Werren, J.H. (1993) Molecular identification of microorganisms associated with parthenogenesis. *Nature*, 361, 66–68.
- Tajima, F. (1989) Statistical method for testing the neutral mutation hypothesis by DNA polymorphism. *Genetics*, 123, 585–595.
- Thompson, J.D., Gibson, T.J., Plewniak, F., Jeanmougin, F. & Higgins, D.G. (1997) The CLUSTAL-X windows interface: flexible strategies for multiple sequence alignment aided by quality analysis tools. *Nucleic Acids Research*, 25, 4876–4882.
- Turelli, M., & Hoffmann, A.A. (1991) Rapid spread of an inherited incompatibility factor in California *Drosophila*. *Nature*, 353, 440–442.
- Wang, Z.-K., Tian, S.-C., Xian, J.-X., Chen, S.-W., Liu, T.-T. & Yin, Y.-P. (2010) Detection and phylogenetic analysis of *Wolbachia* in the Asian citrus psyllid (*Diaphorina citri*) (Homoptera: Psylloidea) populations in partial areas in China. *Acta Entomologica Sinica*, 53, 1045–1054.
- Xie, L., Xie, R.-R., Zhang, K.-J. & Hong, X.-Y. (2008) Genetic relationship between the carmine spider mite *Tetranychus cinnabarinus* (Boisduval) and the two-spotted mite *T. urticae* Koch in China based on the mtDNA COI and rDNA ITS2 sequences. *Zootaxa*, 1726, 18–32.
- Yu M.-Z., Zhang K.-J., Xue X.-F. & Hong X.-Y. (2011) Effects of *Wolbachia* on mtDNA variation and evolution in natural populations of *Tetranychus urticae* Koch. *Insect Molecular Biology*, 20, 311–321
- Zhou, W., Rousset, F. & O'Neill, S. (1998) Phylogeny and PCR-based classification of *Wolbachia* strains using *wsp* gene sequences. *Proceedings of the Royal Society of London. Series B: Biological Sciences*, 265, 509–515.

Accepted by David James: 10 Nov. 2011; published 29 Feb. 2012