

## **Genetic Differentiation and Fragmentation in Response to Climate Change of the Narrow Endemic *Psittacanthus auriculatus***

Authors: Ornelas, Juan Francisco, Licona-Vera, Yuyini, and Vásquez-Aguilar, Antonio Acini

Source: Tropical Conservation Science, 11(1)

Published By: SAGE Publishing

URL: <https://doi.org/10.1177/1940082918755513>

---

BioOne Complete ([complete.BioOne.org](https://complete.BioOne.org)) is a full-text database of 200 subscribed and open-access titles in the biological, ecological, and environmental sciences published by nonprofit societies, associations, museums, institutions, and presses.

Your use of this PDF, the BioOne Complete website, and all posted and associated content indicates your acceptance of BioOne's Terms of Use, available at [www.bioone.org/terms-of-use](https://www.bioone.org/terms-of-use).

Usage of BioOne Complete content is strictly limited to personal, educational, and non-commercial use. Commercial inquiries or rights and permissions requests should be directed to the individual publisher as copyright holder.

---

BioOne sees sustainable scholarly publishing as an inherently collaborative enterprise connecting authors, nonprofit publishers, academic institutions, research libraries, and research funders in the common goal of maximizing access to critical research.

# Genetic Differentiation and Fragmentation in Response to Climate Change of the Narrow Endemic *Psittacanthus auriculatus*

Juan Francisco Ornelas<sup>1</sup>, Yuyini Licona-Vera<sup>1</sup>, and Antonio Acini Vásquez-Aguilar<sup>1</sup>

Tropical Conservation Science  
Volume 11: 1–15  
© The Author(s) 2018  
Reprints and permissions:  
sagepub.com/journalsPermissions.nav  
DOI: 10.1177/1940082918755513  
journals.sagepub.com/home/trc



## Abstract

The state of Oaxaca is positioned in a rather unique biogeographical position with the highest diversity of vascular plants in Mexico. The isolation of xeric valleys surrounded by complex mountain ranges in Oaxaca supplies an excellent opportunity to investigate the influence of the Pleistocene events on xeric species. To test for the alternative hypotheses of Pleistocene glacial refugia, we used sequences of two chloroplast markers to examine the phylogeographic patterns of the endemic mistletoe species *Psittacanthus auriculatus* (Loranthaceae) across its known range in Oaxaca and conducted ecological niche modeling (ENM) to explore changes of its distribution range through present, future, and palaeo periods. Our results revealed two groups corresponding to the distribution of individuals/populations from the northern locations (western valleys), and those from southern localities at central valleys of Oaxaca. A significant genetic signal of differentiation, demographic stability, and contraction of suitable habitat during the Last Glacial Maximum predicted by ENMs strongly supported a scenario of habitat fragmentation during the Late Pleistocene. We conclude that the genetic differentiation of *P. auriculatus* is consistent with a model of range contraction during glacial cycles and expansion during interglacials with no major range changes under future scenarios of climate change. The findings verified the profound effects of Pleistocene climatic fluctuations on this endemic mistletoe species, and the low genetic diversity within populations highlights, paradoxically, the urgency of preserving vulnerable populations of endemic yet parasitic mistletoes.

## Keywords

conservation, genetic diversity, glacial refugia, mistletoe, Oaxaca, Pleistocene

## Introduction

The Mexican highlands with a complex biogeographical, climatic, and geological history encompass one of the 25 world biodiversity hotspots (Mittermeier et al., 2005; Myers, Mittermeier, Mittermeier, da Fonseca, & Kent, 2000). Within these complex mountain systems, the state of Oaxaca is located in a rather unique biogeographical position with high diversity of endemic vascular plants (8.3% of the vascular flora of Oaxaca and 21% of the vascular flora of Mexico; García-Mendoza, Ordóñez, & Briones-Salas, 2004). The Valles Centrales, a region in the heart of the state of Oaxaca, is a unique geographical and cultural region consisting of several interconnected valleys surrounded by large rivers and high mountain ranges. These valleys and the adjacent Tehuacán-Cuicatlán Valley are arid and hot, with a

dry-cold climate and a mean annual precipitation of 500 to 800 mm and an annual average temperature of 18°C to 22°C (García-Mendoza et al., 2004), and are especially rich in endemic plant species with very restricted distributions (Dávila et al., 1993; García-Mendoza et al., 2004; Sosa & De-Nova, 2012). The geological history and the glacial oscillations that occurred

<sup>1</sup>Departamento de Biología Evolutiva, Instituto de Ecología, A.C., Xalapa, Veracruz, Mexico

Received 14 October 2017; Revised 10 December 2017; Accepted 28 December 2017

### Corresponding Author:

Juan Francisco Ornelas, Departamento de Biología Evolutiva, Instituto de Ecología, A.C., Carretera Antigua a Coatepec No. 351, El Haya, Xalapa, Veracruz 91070, Mexico.  
Email: francisco.ornelas@inecol.mx



Creative Commons Non Commercial CC BY-NC: This article is distributed under the terms of the Creative Commons Attribution-NonCommercial 4.0 License (<http://www.creativecommons.org/licenses/by-nc/4.0/>) which permits non-commercial use, reproduction and distribution of the work without further permission provided the original work is attributed as specified on the SAGE and Open Access pages (<https://us.sagepub.com/en-us/nam/open-access-at-sage>).

during the Pliocene and Pleistocene probably caused the fragmentation and long-term isolation of populations, subsequently leading to highly divergent lineages and endemism in this region (Bryson, García-Vázquez, & Riddle, 2011; Rojas-Soto, Espinosa de los Monteros, & Zink, 2007; Ruiz-Sanchez & Specht, 2013).

Integrative application of phylogeography and ENM has become a key approach for explaining intraspecific evolutionary patterns associated with climate oscillations (e.g., Bonatelli et al., 2014; Carstens & Richards, 2007; Ornelas et al., 2015; Perktas, Gür, & Ada, 2015; Peterson & Nyári, 2007; Waltari et al., 2007). Numerous studies using this approach indicate that the genetic differentiation of many extant taxa and species ranges were affected by climatic and environmental discontinuities as barriers and Pleistocene glacial/interglacial cycles, most notably in the temperate regions of northern Europe and North America (Carnaval, Hickerson, Haddad, Rodrigues, & Craig Moritz, 2009; Hewitt, 2000). Yet, Pleistocene climatic oscillations have had a profound effect on the distribution, demographic dynamics, and patterns of genetic variation of arid adapted species (Allal et al., 2011; Byrne, 2008; Meng, Gao, Huang, & Zhang, 2015; Riddle & Hafner, 2006; Turchetto-Zolet, Pinheiro, Salgueiro, & Palma-Silva, 2013). In the New World, cyclic range contractions and expansions shaped the current distribution of arid plants, their concomitant population dynamics and genetic differentiation, particularly during the Late Quaternary climatic changes (Collevatti, Rabelo, & Vieira, 2009; Rebernick et al., 2010). However, the influence of these climatic fluctuations on phylogeographic patterns of taxa occurring at the intertropical drylands remains largely unknown.

Phylogeographic studies of taxa from arid regions have revealed a pattern of lineage divergence associated to contraction to and expansion from *xerophilous refugia* (Bonatelli et al., 2014; Collevatti, Castro, Lima, & Telles, 2012; Collevatti, Grattapaglia, & Hay, 2003; Garrick, Nason, Meadows, & Dyer, 2009; Nason, Hamrick, & Fleming, 2002). The *glacial refugia* hypothesis (Haffer, 1969), which was originally conceived for tropical biogeographical realms, posits that species contracted to one or more southerly refugia during cold/dry glacial periods and expanded out from them in warm/humidity interglacials (Avice, 2000; Hewitt, 2000). The *glacial refugia* hypothesis is based on the assumption that populations were restricted to refugia during glacial maxima within the bounds of the current observed distribution of a species. Contrary to predictions of the *glacial refugia* hypothesis, recent studies using species distribution models with coalescent simulations based on DNA sequences indicate more fragmentation of suitable habitats during the Last Interglacial (LIG; 140,000–120,000 years BP) and the present than in the Last Glacial Maximum (LGM; ca. 20,000 years BP), probably due

to topography, and more expansion of suitable climatic conditions during the LGM (e.g., Leite et al., 2016). Two contrasting responses of arid-adapted species to climatic fluctuation have been observed: (a) genetic divergence linked to population contractions into patches of xerophilous vegetation with warm temperatures during glacial maxima and expansions into different directions during the large-scale aridification phase of the Holocene (Clark-Tapia & Molina-Freaner, 2003; Fehlbeg & Ranker, 2009; Gutiérrez-Flores, García-De León, León-de la Luz, & Cota-Sánchez, 2016; Sosa, Ruiz-Sánchez, & Rodríguez-Gómez, 2009). This response is consistent with predictions of the *glacial refugia* hypothesis (Haffer, 1969), which is widely accepted for temperate species in the mid latitudes of the Northern Hemisphere and (b) populations of species contracted to warm and humid refugia during the interglacials, and expanded out under the cold/dry climate of the LGM (Bonatelli et al., 2014), according to the *interglacial refugia* hypothesis (Haffer, 1969; Hewitt, 2004).

The distributions of organisms in xeric environments of Mexico underwent dramatic changes linked to Pleistocene climate cycles (Metcalf, O'Hara, Caballero, & Davies, 2000; Shreve, 1942), and plant populations could have experienced repeated geographic isolation during the Pleistocene glacial/interglacial cycles approximately 2.4 to 0.01 million years ago (e.g., Angulo, Ruiz-Sanchez, & Sosa, 2012; Gándara & Sosa, 2014; Hernández-Hernández, Colorado, & Sosa, 2013; Rodríguez-Gómez & Ornelas, 2015; Ruiz-Sanchez, Rodríguez-Gómez, & Sosa, 2012; Vásquez-Cruz & Sosa, 2016). The effects of Pleistocene climate cycles between allopatric populations currently distributed in the southern portion of the Chihuahuan Desert and those distributed in the arid regions of the Valles Centrales and Tehuacan-Cuicatlán Valley of Oaxaca has been sparsely tested, with population divergence between these areas dated during the Pliocene (Gándara & Sosa, 2014) or during the Pleistocene, with demographic expansion during the LGM (Scheinvar, Gámez, Castellanos-Morales, Aguirre-Planter, & Eguiarte, 2017). A pattern of glacial survival into southern refugia followed by postglacial recolonization of northern regions seems to be ubiquitous for a variety of temperate taxa (e.g., Hewitt, 2000; Stewart, Lister, Barnes, & Dalén, 2010). The phylogeographic pattern of southern refugia for temperate species during glacial phases, which generally are confined to the southern portion of the species' distribution during warm climatic phases such as the current interglacial, is not followed by desert-adapted species (Angulo, Amarilla, Anton, & Sosa, 2017; Castellanos-Morales, Gámez, Castillo-Gámez & Eguiarte, 2016; Ruiz-Sanchez et al., 2012; Scheinvar et al., 2017). Phylogeographic patterns for studied species of the Chihuahuan Desert biota suggest the opposite pattern, a greatest range contraction during the

LIG, with a later expansion to northern areas over the LGM. This pattern is accompanied with demographic expansion and a gradient of genetic diversity, with higher diversity values at southern latitudes (Angulo et al., 2017; Castellanos-Morales et al., 2016; Rebernick et al., 2010; Ruiz-Sanchez et al., 2012). Overall, results of current ENM and palaeomodelling show that the area currently occupied by studied species is substantially larger than it was during the LIG period and the LGM, suggesting that it has been gradually expanding northward since the LIG period. Previous phylogeographic studies that included plant populations of the Valles Centrales and the Tehuacán-Cuicatlán Valley have shown that their ranges contracted during interglacials and then expanded to colonize northern xeric regions during the glacial periods (the Mezquital Valley and the Chihuahuan Desert; e.g., Loera, Ickert-Bond, & Sosa, 2017; Ruiz-Sanchez et al., 2012; Scheinvar et al., 2017) or expanded during the warm/humid LIG period and contracted to one or more southerly refugia during cold/dry glacial maxima (Cornejo-Romero et al., 2017).

Mistletoes are considered ecologically important key resources as they provide high-quality nutritional resources for a variety of obligate and partially dependent species, especially during periods of seasonal scarcity (Watson, 2001), and influence indirectly community structure in low productivity systems on bottom-up processes (e.g., Watson, 2009; Watson & Herring, 2014). Most of these parasitic plants depend on avian vectors for pollen and seed dispersal and obtain all of their water and minerals from the host (obligate hemiparasites) through a vascular connection termed haustorium (Calder & Bernhardt, 1983). Given their close connections with and dependence on their hosts (Cocoletzi, Angeles, Ceccantini, Patrón, & Ornelas, 2016; Kuijt, 2009), the geographical ranges of mistletoes are directly related to the availability of suitable host trees, and the geographic structuring of host populations might influence the genetic structuring of mistletoe populations (Norton & Carpenter, 1998; Ramírez-Barahona, González, González-Rodríguez, & Ornelas, 2017). Endemic species of mistletoes might be highly vulnerable to local extinctions, and specific conservation and management planning are needed to further develop strategies to support the persistence of multiple, interacting processes (climatic, hydrological, ecological, demographic, and genetic) of evolutionary refugia and ecological multiple interactions (e.g., host/parasite interaction) in an era of unprecedented environmental change (Davis, Pavlova, Thompson, & Sunnucks, 2013). Mistletoes infect a large number of tree species including commercially important coniferous and other hardwood timber stands (Mathiasen, Nickrent, Shaw, & Watson, 2008). Because of this, the current perception of mistletoes as invasive pests, damaging to

individual trees and detrimental to forest health, and noxious weeds needs to be challenged and rather understood as an indicator of habitat health, or in superabundance as a signal of landscape perturbation (Norton & Reid, 1997; Watson, 2001).

*Psittacanthus auriculatus* (Oliv.) Eichler, a narrow endemic to the Mexican States of Oaxaca and Puebla (Kuijt, 2009), is the only Mesoamerican species in the genus with cordate leaves (Kuijt, 2009). In this region, the species commonly grows on *Acacia schaffneri* (S. Watson) F.J. Herm., and less frequently on *Acacia pennatula* (Schltdl. & Cham.) Benth., *Acacia cymbispina* Sprague & Riley and *Prosopis laevigata* (Humb. & Bonpl. ex Willd.) M.C. Johnst. trees in dry rocky valleys at an altitude between 1,300 and 2,000 m (Díaz Infante, Lara, Arizmendi, Eguiarte, & Ornelas, 2016; Kuijt, 2009; Pérez-Crespo, Ornelas, Martén-Rodríguez, González-Rodríguez, & Lara, 2016). *P. auriculatus* plants produce ca. 100 to 200 flowers each that open asynchronously from August to October (Díaz Infante et al., 2016; Pérez-Crespo et al., 2016). The self-compatible, partially protandrous red-pinked flowers (ca. 20-mm long) produce large amounts of nectar (13–30  $\mu$ L/flower/day), last 2 days, and are mainly pollinated by hummingbirds (Pérez-Crespo et al., 2016). Its ripe purplish-black, fleshy (one-seed) fruits (9  $\times$  13 mm) are consumed by several bird species (Díaz Infante et al., 2016). Local people harvest the mistletoe plants to feed goats. Currently, the ecosystems in the Valles Centrales have become seriously degraded due to natural, historical, and anthropogenic factors, posing significant challenges in the area for vegetation restoration and conservation of mostly endemic plant species. Extensive plant surveys were conducted covering the entire distribution of *P. auriculatus* and performed plant material collection from several populations, all of which contained a small number of individuals. Therefore, the narrow distribution of this endemic mistletoe species, small population sizes, host specificity, isolation, and exploitation by the local people constitute pressures that can increase its sensitivity to extinction.

In this study, we examine chloroplast DNA (cpDNA) sequence variation to explain genetic diversity in *P. auriculatus*. We also used ENM to give insight into the effects of past, present, and future climatic changes on the distribution of *P. auriculatus*. Specifically, we test the following hypotheses: (1) the paleodistribution of *P. auriculatus* populations is expected to be contracted during the LGM, while during the interglacials they were expanded northwards (*glacial refugia* hypothesis), (2) fragmented during the interglacials, while during the LGM they are expected to be continuous (*interglacial refugia* hypothesis), and (3) the paleodistribution of *P. auriculatus* populations is expected to be contracted and fragmented into multiple refugia during the LGM,

while during the interglacials they were continuous (*xerophilous refugia* hypothesis).

## Methods

### Population Sampling

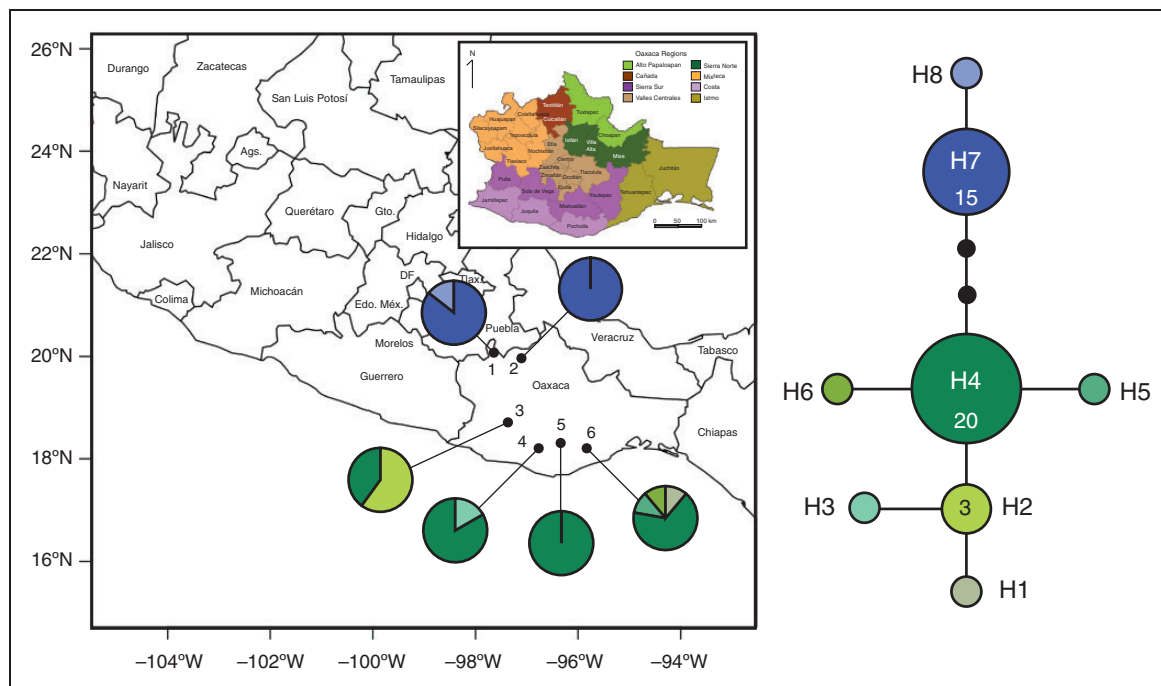
Leaf tissue samples were collected from 53 individuals in six locations (5–9 individuals per location) throughout the species range in Mexico (Table 1, Figure 1). Target sampling localities were chosen based on localities of occurrence data acquired from Mexican herbarium records and Kuijt (2009). Only one *P. auriculatus* plant was sampled per individual host tree. Leaf tissue samples were preserved in silica gel desiccant until DNA extractions were performed.

### Chloroplast Sequencing

Total genomic DNA was extracted from silica-dried material using a modified 2×cetyl trimethyl ammonium bromide protocol (Doyle & Doyle, 1987) or the DNeasy Plant Mini kit (Qiagen, Valencia, CA, USA) using the manufacturer protocol. Sequences of noncoding spacer region that lies between the large subunit of ribulose-1, 5-bisphosphate-carboxylase (*rbcL*) and the beta-subunit of the chloroplast ATP-synthase (*atpB*; hereafter *atpB-rbcL*) in combination with sequences of the plastid *trnL-trnF* intergenic spacer region (hereafter *trnL-F*) from the chloroplast genome (cpDNA) were amplified by PCR and sequenced. These markers show the appropriate level of variation for mistletoe studies at the species and population levels (e.g., Amico, Vidal-Russell, García, & Nickrent, 2012; Ornelas et al., 2016; Pérez-Crespo

**Table 1.** Geographic Information and Sample Sizes of the *Psittacanthus auriculatus* Localities of Oaxaca Sampled in This Study.

Pop. no.	Location	Altitude (m)	Latitude (N)	Longitude (W)	n	Haplotype
1	Santiago Chazumba	1709	18.09511	97.68647	7	H7(6), H8(1)
2	Huajuapán de León, El Molino	1695	17.69371	97.60154	9	H7(9)
3	Teotitlán del Valle	1680	17.08060	96.51188	5	H2(3), H4(2)
4	Santiago Matatlán, Guelavía	1782	16.84827	96.37170	6	H3(1), H4(5)
5	San Dionisio Ocotepec	1620	16.79300	96.33406	7	H4(7)
6	Sto. Domingo Tehuantepec	1400	16.52000	96.23000	9	H1(1), H4(6), H5(1), H6(1)



**Figure 1.** Collection localities (population numbers as in Table 1) and geographical distributions of 8 chloroplast haplotypes (*atpB-rbcL/trnL-F*) found in six populations of *Psittacanthus auriculatus* in Oaxaca. The blue haplotypes correspond to the northern populations group and the green haplotypes to the southern populations group identified by AMOVA. Small black dots are nonsampled haplotypes.



et al., 2017). Amplification of the genes *atpB* and *rbcL* was conducted with the primers *atpB*-1 reverse and *rbcL*-1 reverse described in Chiang, Schaal, and Peng (1998), whereas for *trnL*-F region we used the universal primers *trnL* 'c' and 'f' described in Taberlet, Gielly, Pautou, and Bouvet (1991). The 25- $\mu$ L PCR mix for *atpB-rbcL* contained 5  $\mu$ L of 5 $\times$ buffer (1 $\times$ ; Promega, Madison, WI, USA), 2.5  $\mu$ L MgCl<sub>2</sub> (2.50 mM), 2.5  $\mu$ L dNTPs mix (0.8 mM), 1  $\mu$ L of each primer (0.4  $\mu$ M), 0.4  $\mu$ L Taq polymerase (0.08U/ $\mu$ L; Promega), 3  $\mu$ L of template DNA, and finally dH<sub>2</sub>O added to bring to volume. Amplification of *atpB-rbcL* used the following profile: initial denaturation at 94°C for 2 min, followed by 35 cycles of 94°C for 45 s, 50°C for 1.15 min, 72°C for 1.15 min, and a final step of 72°C for 10 min. For the *trnL*-F, the 25- $\mu$ L PCR mix for contained 3.55  $\mu$ L of 5 $\times$ buffer (0.71 $\times$ ; Promega, Madison, WI, USA), 3.6  $\mu$ L MgCl<sub>2</sub> (3.60 mM), 1.80  $\mu$ L dNTPs mix (0.58 mM), 0.45  $\mu$ L of each primer (0.18  $\mu$ M), 0.20  $\mu$ L Taq polymerase (0.04U/ $\mu$ L; Promega), 1.5 to 3  $\mu$ L of template DNA, and finally dH<sub>2</sub>O added to bring to volume. Amplification of *trnL*-F used the following profile: initial denaturation at 95°C for 5 min, followed by 40 cycles of 95°C for 10 s, 55°C for 1 min, 72°C for 20 s, and a final step of 72°C for 7 min. PCR products were purified with the QIAquick kit (Qiagen) and sequenced in both directions to check the validity of the sequence data using the BigDye Terminator Cycle Sequencing kit (Applied Biosystems, Foster City, CA, USA). The products were analyzed on a 310 automated DNA sequencer (Applied Biosystems) at University of Washington High Throughput Genomics Unit, Seattle, WA. Finally, edited sequences were imported into SE-AL 2.0a111 (<http://tree.bio.ed.ac.uk/software/seal>) and aligned manually. For *atpB-rbcL* and *trnL*-F, indels were introduced during alignment but the resulting gaps were not coded. All unique sequences of *P. auriculatus* have been submitted to GenBank (Accession nos. *atpB-rbcL*: MF983856–MF983863, *trnL*-F: MF983864–MF983871).

### Haplotype Relationships

To infer genealogical relationships among haplotypes, a statistical parsimony network for the combined *atpB-rbcL/trnL*-F data set was constructed as implemented in TCS 1.2.1 (Clement, Posada, & Crandall, 2000), with the 95% connection probability limit and treating gaps as single evolutionary events. Loops were resolved following the criteria given by Pfenninger and Posada (2002). Since the chloroplast is inherited as a single unit, the results we report herein are for the combined *atpB-rbcL/trnL*-F data set.

### Genetic Diversity and Population Structure

Average gene diversity within populations ( $h_S$ ,  $v_S$ ), total gene diversity ( $h_T$ ,  $v_T$ ), and the differentiation for

unordered alleles ( $G_{ST}$ ) and for ordered alleles ( $N_{ST}$ ) based on 10,000 permutations were estimated using PERMUT 2.0 (Pons & Petit, 1996). If  $N_{ST}$  is significantly larger than  $G_{ST}$ , this means that two alleles sampled from the same region are phylogenetically more closely related than two alleles sampled from different regions, evidencing the presence of a significant phylogeographical signal in the data (Pons & Petit, 1996). Molecular diversity indices, including the number of segregating sites ( $S$ ), the number of haplotypes ( $N_H$ ), nucleotide diversity ( $\pi$ ), and pairwise comparisons of  $F_{ST}$  values between populations were calculated using ARLEQUIN 3.1.1 (Excoffier, Laval, & Schneider, 2005) with 1,000 permutations. Populations with three samples or fewer were excluded as required for this analysis.

To determine whether or not populations are structured, two analyses of molecular variance (AMOVAs; Excoffier, Smouse, & Quattro, 1992) were performed based on pairwise differences using ARLEQUIN with populations treated as (a) a single group to determine the amount of variation partitioned among and within populations and (b) grouped into northern or southern according to parsimony network results. Locus-by-locus AMOVAs were performed using the Jukes and Cantor model for *atpB-rbcL/trnL*-F sequences and 16,000 permutations to determine the significance of each AMOVA.

### Demographic History

Signatures of demographic changes or selection in the recent history of *P. auriculatus* were addressed using analyses based on different coalescent approaches. Data were first tested against a neutral Wright–Fisher model by means of neutrality tests and mismatch distributions carried out in ARLEQUIN. To test whether populations evolve under neutrality, Fu's  $F_s$  test (Fu, 1997) and Tajima's  $D$  (Tajima, 1989) neutrality test statistics were calculated, and to assess possible expansions, mismatch distributions (Harpending, 1994) were calculated using the sudden expansion model of Schneider and Excoffier (1999) with 1,000 bootstrap replicates. The validity of the sudden expansion assumption was determined using the sum of squares differences (SSD) and Harpending's raggedness index (Hri; Harpending, 1994), both of which are higher in stable, nonexpanding populations (Rogers & Harpending, 1992).

### Ecological Niche Modeling

The observed demographic patterns of arid land plant populations were tested for *P. auriculatus* using ENM (Elith et al., 2011). ENM was used predict the distribution of *P. auriculatus* at the Mid-Holocene (MH; ca. 6,000 years ago), LGM (ca. 20,000 years ago), and at the LIG (ca. 120,000–140,000 years ago). Mistletoe

occurrence data were assembled mainly from herbarium records from the Global Biodiversity Information Facility (<http://www.gbif.org/species/4003073>) and supplemented with records from Kuijt (2009) and our georeferenced records from field collection. After careful verification of every data location, excluding duplicate occurrence records or in close proximity to each other (ca. 1 km<sup>2</sup>) to reduce the effects of spatial autocorrelation, we restricted the data set to 49 unique presence records for the analysis. Distributional records were input and analyzed to infer an ENM with the maximum entropy algorithm in MAXENT 3.4.1 (Phillips, Anderson, & Schapire, 2006) and using the *raster* package 2.5-8 (Hijmans et al., 2016) in R 3.4.1 (R Development Core Team, 2017) to extract the data. Present-day and LIG temperature and precipitation data (BIO 1–19 variables) were drawn as climate layers from the WorldClim database at a spatial resolution of ca. 1 km<sup>2</sup> in each raster (Hijmans, Cameron, Parra, Jones, & Jarvis, 2005; <http://www.worldclim.org>). We also obtained data for past climate layers for two MH (3 arc-minutes, pixel size ca. 21.62 km<sup>2</sup>) and LGM (3 arc-minutes) past conditions based on the Community Climate System Model (CCSM) and Model Interdisciplinary Research on Climate (MIROC) global models (Braconnot et al., 2007; Hijmans et al., 2005).

We first constructed a model to the present using all climatic variables with 70% of the locality records as training data and the other 30% as testing data in addition to response curves, jackknife tests, logistic output format, and random seed parameters. We ran 1,000 iterations with no extrapolation in order to avoid artificial extrapolations from extreme values of the ecological variables; as such parameters are biased toward the environmental envelope of background points and occurrence data (Phillips et al., 2006). All other parameters in MAXENT were maintained at default settings. The logistic format was used to obtain the values of habitat suitability and the variable importance was determined comparing percentage contribution values and jackknife plots. Then, correlation coefficients between present variables were calculated using PAST 2.12 (Hammer, 2011) with the objective to identify and remove the variables that were highly correlated (correlation values  $\geq 0.8$ ) and less explanatory, having as a rule of decision, the relative contributions of each of them in the MAXENT model. After removing the highly correlated variables, five variables were used in the final analysis for the mistletoe (BIO6 = Minimum Temperature of Coldest Month, BIO14 = Precipitation of Driest Month, BIO15 = Precipitation Seasonality, BIO16 = Precipitation of Wettest Quarter, BIO19 = Precipitation of Coldest Quarter). The models were calibrated using the biogeographic provinces (Morrone, 2005, 2014) as hypothesis of the accessibility area of *P. auriculatus*, and vegetation range limits (Kuijt, 2009), which represent the species historical

barriers to dispersal (Kuijt, 2009). Resulting species distribution under current climate conditions were then projected onto the LIG and onto past climate reconstructions for the MH and LGM (Braconnot et al., 2007; Hijmans et al., 2005). For future climate conditions, we projected the current conditions to the layers corresponding to two concentration pathways RCP 4.5 (intermediate emission scenarios achieving an impact of 4.5 watts per square meter by 2,100) and RCP 8.5 (hard emission scenario accomplishing an increase of 8.5 watts per square meter by 2,100) (Intergovernmental Panel on Climate Change, 2007; van Vuuren et al., 2011), from coupled atmospheric-ocean general circulation models based on the CCSM (Gent et al., 2011) and MIROC; (Watanabe et al., 2010). Changes were investigated separately for two temporal frameworks representing the 21st century: 2041 to 2060 (average in 2050) and 2061 to 2080 (average in 2070).

Final models were constructed with 10 cross-validation replicates without clamping and extrapolation, and considering the average output grids as the final predictive models. To convert initial model outputs to binary predictions, we used the equal training sensitivity and specificity threshold over the average predicted suitability across replicates and we calculated the sensitivity (the proportion of observed presences in relation to those that were predicted, which quantifies the omission errors), the specificity (the proportion of observed absences compared to those that were predicted, which quantifies the commission errors), the overall accuracy, and the TSS (True Skill Statistic; Allouche, Tsoar, & Kadmon, 2006). The TSS test corrects the overall accuracy of the model prediction by the accuracy expected by chance. This test provides a score between  $-1$  and  $+1$ , with values  $> 0.6$  considered good,  $0.2$  to  $0.6$  fair to moderate, and  $< 0.2$  poor (Jones, Acker, & Halpern, 2010). We also used a threshold-independent method of model validation, the receiver operating characteristic (ROC) curve analysis. The ROC analysis characterizes the predictive performance of a model at all possible thresholds by a single number, the area under the curve (AUC; Phillips et al., 2006). The value of the AUC is between  $0.5$  and  $1.0$ . If the value is  $0.5$ , the model is no better than random; an area with a value equal or close to  $1$  indicates a good model (Fielding & Bell, 1997).

### Environmental Variation

Measurements of temperature and precipitation (BIO 1–19 variables) were extracted for each location with occurrence of *P. auriculatus* from WorldClim (Hijmans et al., 2005) as explained above. We performed principal components analysis (PCA) using SPSS Statistics for Mac 17 (SPSS Inc., Chicago, IL, USA) to reduce intercorrelated BIO variables to a smaller system of uncorrelated, independent variables, and used the resulting PC loadings

to examine habitat and ecological variation potentially related to population divergence. Differences in PC scores between genetic groups were tested with one-way analyses of variance in SPSS.

## Results

### Haplotype Relationships

We obtained sequences of the chloroplast intergenic spacers *atpB-rbcL* ( $n=43$ ) and *trnL-F* ( $n=53$ ) for the 53 collected individuals from six populations. The aligned concatenated sequences of the chloroplast intergenic spacers ( $n=43$ ) yielded a 1,393 bp fragment and eight haplotypes. The results we report herein are for the combined data set.

Statistical parsimony retrieved a well-resolved network in which two haplogroups could be distinguished for *P. auriculatus* (Figure 1). The most frequent (46.5% of the individuals and 66.6% of the sampled populations) haplotype (H4) forms the core of the southern haplogroup; it was not retrieved in the southern populations. Haplotypes connected to H4 by one step consist of haplotypes exclusively found in the southern population (H1–H3, H5–H6). The second most frequent (34.9% of the individuals and 33.3% of the sampled populations) haplotype (H7) forms the core of the second group of haplotypes distributed in northern populations connected to singleton H8. Haplotypes in the northern haplogroup are connected to those in the southern haplogroup by three or more steps (Table 1, Figure 1).

### Genetic Diversity and Population Structure

Differentiation among populations based on *atpB-rbcL/trnL-F* variation ( $G_{ST}=0.561$ ,  $SE=0.1474$ ) indicated that *P. auriculatus* is genetically subdivided. Genetic diversity across all populations ( $h_T=0.793$ ,  $SE=0.0573$ ;  $v_T=0.821$ ,  $SE=0.1097$ ) was higher than the average within-population value ( $h_S=0.348$ ,  $SE=0.1211$ ;  $v_S=0.186$ ,  $SE=0.0856$ ). PERMUT analysis showed that  $N_{ST}$  (0.773,  $SE=0.1184$ ) was significantly higher than the  $G_{ST}$  ( $p < .05$ ), indicating phylogeographical structuring. When groups of populations (northern vs. southern) were compared, pairwise comparisons of  $F_{ST}$  value was high and significant for the *atpB-rbcL/trnL-F* data set ( $F_{ST}=0.838$ ,  $p < .001$ ).

The AMOVAs showed that 85.5% for the *atpB-rbcL/trnL-F* was explained by differences within populations and 14.5% by differences between populations when all locations were treated as a single group ( $F_{ST}=0.89$ ,  $p < .0001$ ). The AMOVA for the *atpB-rbcL/trnL-F* revealed population structure, with a high  $F_{CT}$  value ( $F_{CT}=0.89$ ,  $p < .0001$ ) obtained when populations are grouped as northern and southern, suggesting that

seed-mediated dispersal is limited (Table 2). Genetic diversity ( $h$ ) and nucleotide diversity ( $\pi$ ) were low for both data sets (Table 3).

### Demographic History

When populations are treated as two groups (northern and southern), the Tajima's  $D$  and Fu's  $F_s$  values were negative for both the northern and southern groups and for the species (considering all populations as one group) but only significant in the *atpB-rbcL/trnL-F* data set for the southern group, indicating deviation from the model of neutral evolution for the southern *P. auriculatus* population (Table 3). In the mismatch distribution, SSD and Hri results were low and nonsignificant ( $p > .05$ ) in the *atpB-rbcL/trnL-F* data set, providing evidence for sudden demographic expansion in the past for all groups of populations. Low and nonsignificant values of Hri and SDD indicated a good fit between the observed and the expected values of the sudden expansion model (Table 3).

### Ecological Niche Modeling

The ENM yielded a good fit for the current geographic distribution of *P. auriculatus* (AUC value =  $0.884 \pm 0.062$ ) and threshold probability maps corresponded well to present species range (TSS =  $0.650 \pm 0.112$ ; Figure 2). ENMs revealed that suitable habitat for *P. auriculatus* was more expanded and continuous under LGM conditions than the more contracted and fragmented distribution under LIG and present conditions (Figure 2). Predictions for the LGM applying both CCSM and MIROC simulations revealed that conditions

**Table 2.** Results of Locus by Locus AMOVA Models on *Pittacanthus auriculatus* Populations With no Groups Defined a priori (a), and Grouped into Two Lineages Corresponding to *P. auriculatus* Populations with Northern and Southern Distribution in Oaxaca (b).

	<i>trnL-trnF/atpB-rbcL</i>			
	Sum of squares	Estimated variance	%	Fixation indices
(a) No groups defined				
Among populations	31.940	0.87792	85.516	
Within populations	5.502	0.14869	14.484	$F_{ST}=0.85^{***}$
Total	37.442	1.02661		
(b) Two lineages				
Among groups	30.504	1.49911	89.336	$F_{CT}=0.89^{***}$
Among populations within groups	1.436	0.03026	1.803	$F_{SC}=0.16^*$
Within populations	5.502	0.14869	8.861	$F_{ST}=0.91^{***}$

\* $p < .05$ , \*\* $p < .001$ , \*\*\* $p < .0001$ .



**Table 3.** Summary Statistics of Neutrality Tests and Demographic Analysis of *Psittacanthus auriculatus* Samples by Genetic Groups Using the *trnL-F/atpB-rbcL* Data set to Infer Demographic Range Expansion.

Parameter	Two groups		
	Northern	Southern	Global
<i>N</i>	16	27	43
<i>N<sub>H</sub></i>	2	6	8
<i>h</i> , gene diversity	0.1250 ± 0.1064	0.3989 ± 0.1172	0.6501 ± 0.0510
$\pi$ , nucleotide diversity	0.0001 ± 0.0002	0.0005 ± 0.0004	0.0017 ± 0.0011
Tajima's <i>D</i>	-1.1622	-1.5975*	-0.4348
Fu's <i>F<sub>s</sub></i>	-0.7001	-3.6993**	-0.9491
<i>SDD</i>	0.0423	0.0019	0.0796
<i>Hri</i>	0.5781	0.1516	0.2225

Note.  $D_T$  and  $F_S$  positive values are indicative of mutation-drift-equilibrium, which is typical of stable populations, and negative values that result from an excess of rare haplotypes indicate that populations have undergone recent expansions, often preceded by a bottleneck. Significantly negative values (at the 0.05 level) reveal in both tests historic demographic expansion events. Significant ( $p \leq .05$ ) *SDD* and *Hri* values indicate deviations from the sudden expansion model. \* $p < .05$ ; \*\* $p < .01$ . *N* = number of individuals; *N<sub>H</sub>* = number of haplotypes; *SDD* = differences in the sum of squares or mismatch distribution; *Hri* = Harpending's raggedness index.

of suitable habitat potentially contracted and fragmented the distribution of *P. auriculatus*, particularly in the western and central valleys of Oaxaca according to both the CCSM and MIROC models (Figure 2). Interestingly, conditions of suitable habitat were contracted and fragmented during the MH, with suitable habitat for *P. auriculatus* restricted to small areas in the western and central valleys, Tehuacán-Cuicatlán Valley, and the central portion of Puebla State. Overall, the comparison between present and past climatic conditions predicted by the models suggests that climatic conditions for *P. auriculatus* suitable habitat experienced range expansions/contractions in Oaxaca, with contraction and fragmentation from LIG to LGM, contraction and fragmentation from LGM to MH, and expansion from MH to present.

Neither CSSM nor MIROC scenarios for 2050 and 2070 predicted major future distributional change for *P. auriculatus* in Oaxaca (Figure 3). Only minor changes were predicted under extreme conditions in the northern portion of its present distribution, close to northern limit of its potential range, and the region between the western and central valleys of Oaxaca (Figure 3).

### Environmental Variation

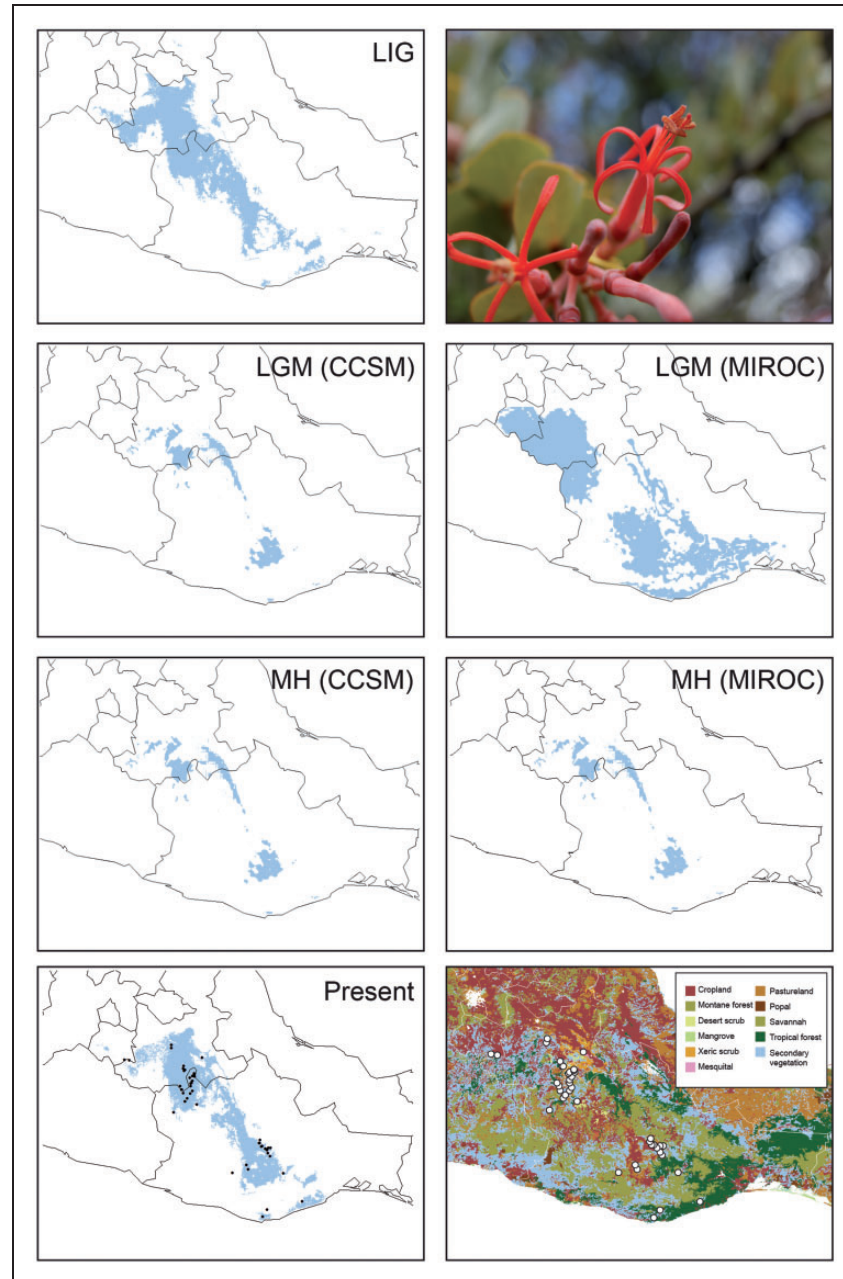
The PCA indicated four niche axes that together explained 93.6% of the environmental variation in *P. auriculatus* (Table 4). The first niche axis (48.9% of variation) was positively associated with precipitation variables (Table 4). The second niche axis (24%) was positively associated with mean diurnal range and precipitation seasonality and negatively associated with precipitation of driest month,

precipitation of driest quarter, and precipitation of coldest month (Table 4). The third niche axis (14.2%) was positively associated with temperature seasonality and temperature annual range and negatively associated with isothermality. Environmental variation between groups was only statistically different in PC3 scores (Table 4). Univariate analysis of variance of PC3 using genetic group as a fixed factor showed significant differences between *P. auriculatus* populations (northern and southern; PC3:  $F_{1,52} = 14.2$ ,  $p < .0001$ ; Table 4). On average, temperature seasonality (BIO4) and temperature annual range (BIO7) values from northern locations are significantly higher than those at southern locations.

## Discussion

### Genetic Diversity and Population Structure

Our survey of chloroplast sequence data in populations of *P. auriculatus* identified two haplogroups in Oaxaca. Phylogeographic and distributional projections derived from ENM are consistent with the hypothesis that isolation by the arid pine-oak forests along the Nudo Mixteco mountain range (Nudo Mixteco, Volcan Prieto, Cerro Piedra de Olla) may have restricted northward gene flow between the western and central valleys (northern and southern locations). Together, our results suggest a recent geographical northern expansion into the xeric vegetation of the western valleys (arid subtropical scrub, mesquite scrub). These are consistent with a model of population expansion/contraction for species responding to climate changes during the Pleistocene and isolation and reduced gene flow by both physical

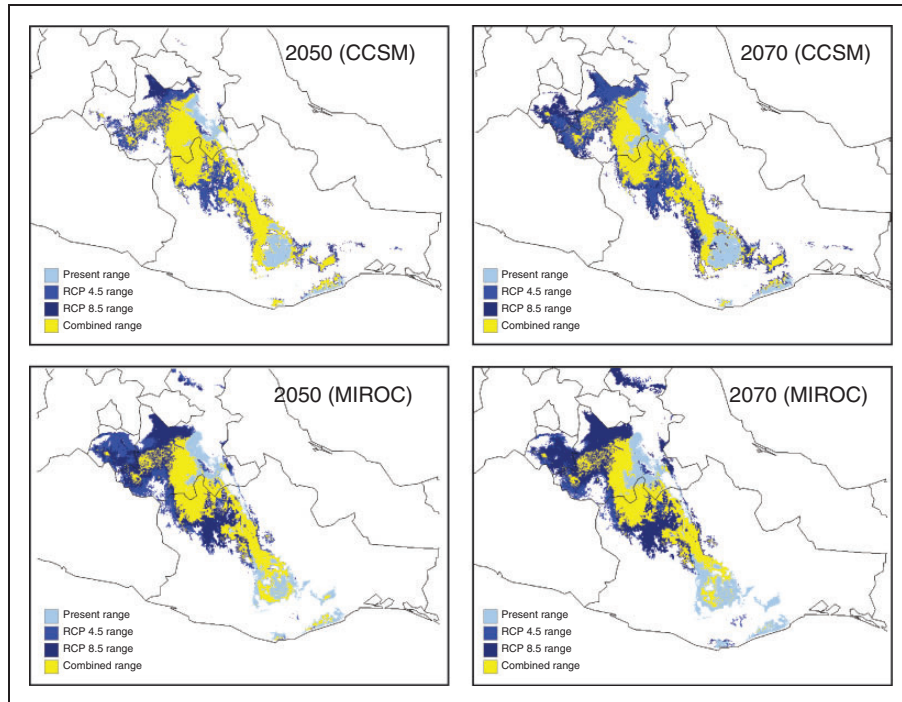


**Figure 2.** Results from the MAXENT analyses showing binary transformation of ecological niche models for *Psittacanthus auriculatus* at LIG (140–120 ka), Last Glacial Maximum (LGM, CCSM and MIROC scenarios, 21 ka), Mid-Holocene (MH, CCSM, and MIROC scenarios, 6 ka), and at present. Light blue indicates binary transformation of occurrence using equal training sensitivity and specificity threshold that maximized the true skill statistics (TSS). Black dots shown on the left map below indicate occurrence records. Vegetation and land use on right below map (scale 1:250000; INEGI 2007), with white dots indicating occurrence records. *Psittacanthus auriculatus* in a mesquite-grassland at Santiago Matatlán, Oaxaca, Mexico.

and environmental barriers. Given the few phylogeographic studies in the area, the phylogeography of *P. auriculatus* in combination with a niche-modeling approach is particularly important to understand the evolution of the Oaxaca biodiversity.

An alternative explanation is that the observed haplotype distribution in *P. auriculatus* may have arisen from

habitat and population fragmentation. Two haplotypes of the combined *atpB-rbcL/trnL-F* (H7–H8) were found to be exclusive to the northern locations and six haplotypes separated by three mutational steps to the southern location (H1–H6). The lack of haplotype sharing between groups favors the hypothesis of restricted bird seed-mediated gene flow between areas. Significant differences



**Figure 3.** Predicted distribution of *Psittacanthus auriculatus* under two climate changes scenarios, from conservative RCP 4.5 (blue) to extreme RCP 8.5 (dark blue) conditions, for (a) 2050 and (b) 2070 with CCSM, and (c) 2050 and (d) 2070 with MIROC. Yellow represents the combined predicted areas under present (light blue) and the two concentration pathways (RCP).

in current environmental conditions between groups of locations are interpretable as an index of temperature variability, with temperature seasonality values (BIO4, BIO7) from northern locations significantly higher than those at southern locations. However, the fact that there are some environmental differences between areas does not necessarily point to adaptation as the driver of genetic differentiation, and thus these analyses are correlative. It is possible that for these mistletoes, the arid pine-oak forests may represent an impediment to gene flow between the western and central valleys in which arid tropical scrub and much of the central valleys are covered with scattered pockets of arid scrub and intermingled with scattered trees or shrubs often related to the surrounding habitat and mescal cultivars (Binford, 1989; Gómez-Mendoza et al., 2008). With seed dispersal mediated by highly vagile bird species (Díaz Infante et al., 2016), this hypothesis is unlikely. The genetic diversity of *P. auriculatus* was highly relative to that observed in more widespread *Psittacanthus* congeners (Ornelas et al., 2016; Pérez-Crespo et al., 2017). Because the fruits of *P. auriculatus* are consumed and dispersed by several bird species, mainly the widespread *Tyrannus vociferans* followed by the altitudinal migrant *Ptilonotus cinereus* (Díaz Infante et al., 2016), it is possible that the observed genetic structure and genetic differentiation has not been eroded by large-

scale seed recruitment or historical rates of gene flow (Ornelas et al., 2016). Distinguishing between these possibilities will require multilocus data sets not currently available. More intensive fine-scale sampling and genotyping more loci (e.g., microsatellites) could reveal further genetic structuring linked to host usage.

### Population Glacial Refugia

The levels of genetic differentiation found in *P. auriculatus* reveal the presence of two genetic groups, and the pattern of differentiation provides support for the predominant role of isolation and environmental factors in driving genetic differentiation between populations of *P. auriculatus*. The ENMs revealed a demographic history for *P. auriculatus* contracted its range from the LIG to the LGM, which was consistent with neutrality and population expansion tests. ENM results indicate that the range of *P. auriculatus* contracted and fragmented from the LIG to the LGM, in both CCSM and MIROC scenarios, and expanded from the MH to present (Figure 2). However, the ENM predicted suitable habitat and population fragmentation of *P. auriculatus* between western and central valleys since the LGM 21,000 years ago (Figure 2). The LIG to LGM contraction, LGM to MH contraction, and expansion from MH to present scenarios are generally

**Table 4.** Factor Loadings from the Principal Components Analysis of *Psittacanthus auriculatus* in Oaxaca on Temperature and Precipitation Variables From WorldClim.

Variables	Factor loading			
	PC1	PC2	PC3	PC4
Annual mean temperature (BIO1)	<b>0.932</b>	0.301	0.143	-0.111
Mean diurnal range (BIO2)	0.512	<b>0.566</b>	0.389	0.459
Isothermality (BIO3)	-0.072	0.533	<b>-0.705</b>	0.301
Temperature seasonality (BIO4)	-0.253	-0.095	<b>0.931</b>	0.026
Max. temperature of warmest month (BIO5)	<b>0.780</b>	0.413	0.448	-0.024
Min. temperature of coldest month (BIO6)	<b>0.945</b>	0.082	-0.172	-0.257
Temperature annual range (BIO7)	-0.466	0.340	<b>0.734</b>	0.334
Mean temperature of wettest quarter (BIO8)	<b>0.910</b>	0.321	0.182	-0.103
Mean temperature of driest quarter (BIO9)	<b>0.966</b>	0.208	0.027	-0.125
Mean temperature of warmest quarter (BIO10)	<b>0.910</b>	0.289	0.255	-0.119
Mean temperature of coldest quarter (BIO11)	<b>0.941</b>	0.306	-0.007	-0.113
Annual precipitation (BIO12)	<b>0.813</b>	-0.428	0.160	0.249
Precipitation of wettest month (BIO13)	<b>0.832</b>	-0.292	0.105	0.339
Precipitation of driest month (BIO14)	0.198	<b>-0.943</b>	0.087	-0.011
Precipitation seasonality (BIO15)	0.339	<b>0.851</b>	-0.111	0.088
Precipitation of wettest quarter (BIO16)	<b>0.864</b>	-0.334	0.115	0.257
Precipitation of driest quarter (BIO17)	0.245	<b>-0.910</b>	0.109	0.334
Precipitation of warmest quarter (BIO18)	<b>0.595</b>	0.088	-0.441	-0.103
Precipitation of coldest quarter (BIO19)	0.484	<b>-0.645</b>	-0.149	-0.125
Proportion of variance explained	48.94%	24.03%	14.21%	6.40%
ANOVA	$F(1,52) = 0.4;$ $p = .501$	$F(1,53) = 3.3;$ $p = .077$	$F(1,53) = 27.4;$ $p < .0001$	$F(1,53) = 2.3;$ $p = .133$

Note. PC scores above 0.5 indicated in bold.

consistent with the *glacial refugia* hypothesis (see also Cornejo-Romero et al., 2017). Based on the phylogenetic evidence and divergence time estimation suggesting that the species originated before the LIG with a split from the sister species clade composed of *P. schiedeanus* and *P. calyculatus* estimated at 2.8 to 1.77 Mya (Ornelas et al., 2016; Pérez-Crespo et al., 2017), we do interpret the genetic differentiation between *P. auriculatus* populations in the western and central valleys of Oaxaca as a hypothesis of population and habitat fragmentation during glacial periods.

Palynological data from the Eocene Mequitongo Formation (Ramírez-Arriaga, Prámparo, Nieto-Samaniego, & Valiente-Banuet, 2017) and the Tehuacán Formation geochronologically dated as Middle Miocene (Ramírez-Arriaga et al., 2014) suggest that conditions were more humid than those that exist today in the Tehuacán-Cuicatlán Valley, a xeric region north of the central valleys of Oaxaca. The overall palynoflora suggests that climatic conditions led to the development of temperate *Pinus* forest, *Pinus-Quercus* forest, deciduous forest, and cloud forest, which grew in mountain ranges and components of tropical deciduous forests, such as Burseraceae,

Leguminosae, and Cactaceae, were also present, indicating semiarid conditions. Palynological records of the Middle Miocene Tehuacán Formation suggest a change from a relatively humid to a semiarid climate, which favored the expansion of groups currently abundant in the xerophilous scrub and low-growth seasonally dry tropical forest (Cornejo-Romero et al., 2017). This study suggests that during Late Quaternary, arid conditions persisted at LGM in both the western and central valleys of Oaxaca. Therefore, the ENM results support the *xerophilous refugia* hypothesis in which the paleodistribution of *P. auriculatus* was contracted and fragmented into multiple refugia during the LGM, while during the interglacials it was continuous. Future phylogeographic studies are needed on other ecologically important and codistributed species to determine whether the responses of those species to isolation and Pleistocene climate change are congruent with that observed in *P. auriculatus*.

### Implications for Conservation

Despite their positive role as ecological keystones in many forests and woodlands (Watson, 2001; Watson &



Herring, 2014) and facilitative effects of hemiparasitic mistletoes on community structure (March & Watson, 2010; Ndagurwa, Dube, & Mlambo, 2014; Watson, 2015; Watson & Herring, 2012), the loss of mistletoe species should not represent intuitively a threat to associated hosts and could even provide benefit (Strona, 2015; Strona, Galli, & Fattorini, 2013). For instance, the extinction risk of *P. auriculatus* is low parasitizing widely distributed host species with low vulnerability to extinction like *A. schaffneri* (86% prevalence; Díaz Infante et al., 2016). Also, our future projections suggest that the distribution of suitable habitat for *P. auriculatus* would remain similar to current conditions and might even expand its range in which given the key resources provided to pollinators and seed dispersers and its role as soil facilitator, even in a situation of extreme drought.

The results of the study are interesting from a conservation standpoint, as we provided the first estimate of genetic variability and structure of the short-range endemic *P. auriculatus*. The northern and southern divergent populations are in good congruence with the hypothetical refugia outlined by ENM results. The results exhibit a strong genetic differentiation, which is obviously due to genetic drift in the isolated populations. Our study therefore gives evidence for glacial relict endemism of *P. auriculatus* in the aridlands of Oaxaca. The narrow distribution of this endemic mistletoe species, small population sizes, isolation, and exploitation by the local people constitute pressures that can increase its sensitivity to extinction. Despite the expanded suitable conditions predicted under future climate change scenarios, the Valles Centrales have become seriously degraded due to natural, historical, and anthropogenic factors, posing significant challenges in the area for vegetation conservation of glacial relict endemism. Our results, while preliminary, illustrate the utility of an integrative approach for identifying geographical regions that harbor evolutionarily distinct populations and caution against using only the distributional patterns of endemics to prioritize regions for conservation. While incorporation of additional species from unrelated taxa will be necessary to draw definitive conclusions about evolutionarily distinct regions, our results suggest a conservation approach for the xeric areas of Oaxaca that would emphasize protection of both northern and southern valleys, thereby maximizing preservation of intraspecific genetic diversity and protection of endemic species.

### Acknowledgments

We thank Cristina Bárcenas, Andrés Ortíz-Rodríguez, Santiago Ramírez-Barahona, María José Pérez-Crespo, Etelvina Gándara, Alfonso Langle, Flor Rodríguez-Gómez, Sergio Díaz Infante, Hellen Martínez Roldán, and Sandra Rodríguez Mendieta who helped in obtaining samples and generated sequences for this work, and the municipal and community authorities of Santiago

Matatlán, Oaxaca for logistic support. Permission to conduct our fieldwork was granted by the Mexican government (Instituto Nacional de Ecología, Secretaría del Medio Ambiente y Recursos Naturales, SGPA/DGGFS/712/1299/12).

### Declaration of Conflicting Interests

The author(s) declared no potential conflicts of interest with respect to the research, authorship, and/or publication of this article.

### Funding

The author(s) disclosed receipt of the following financial support for the research, authorship, and/or publication of this article: This project was funded by research funds from the Departamento de Biología Evolutiva, Instituto de Ecología, AC (20030/10563) and a competitive grant (grant number 155686) from the Consejo Nacional de Ciencia y Tecnología (CONACyT; <http://www.conacyt.mx>) awarded to Juan Francisco Ornelas. Y. Licona-Vera was supported by doctoral scholarship (262561) from CONACyT.

### References

- Allal, F., Sanou, H., Millet, L., Vaillant, A., Camus-Kulandaivelu, L., Logossa, Z. A.,...Bouvet, J. M. (2011). Past climate changes explain the phylogeography of *Vitellaria paradoxa* over Africa. *Heredity*, 107(2): 174–186.
- Allouche, O., Tsoar, A., & Kadmon, R. (2006). Assessing the accuracy of species distribution models: Prevalence, kappa, and the true skill statistic (TSS). *Journal of Applied Ecology*, 43(6): 1223–1232.
- Amico, G. C., Vidal-Russell, R., García, M. A., & Nickrent, D. L. (2012). Evolutionary history of the South American mistletoe *Tripodanthus* (Loranthaceae) using nuclear and plastid markers. *Systematic Botany*, 37(1): 218–225.
- Angulo, D. F., Ruiz-Sanchez, E., & Sosa, V. (2012). Niche conservatism in the Mesoamerican seasonal tropical dry forest orchid *Barkeria* (Orchidaceae). *Evolutionary Ecology*, 26(4): 991–1010.
- Angulo, D. A., Amarilla, L. D., Anton, A. M., & Sosa, V. (2017). Colonization in North American arid lands: The journey of agarito (*Berberis trifoliolata*) revealed by multilocus molecular data and packrat midden fossil remains. *PLoS ONE*, 12, e0168933.
- Avise, J. C. (2000). *Phylogeography: The history and formation of species*. Cambridge, MA: Harvard University Press.
- Binford, L. C. (1989). A distributional survey of the birds of the Mexican State of Oaxaca. *Ornithological Monographs*, 43, 1–418.
- Bonatelli, I. A. S., Pérez, M. F., Peterson, A. T., Taylor, N. P., Zappi, D. C., Machado, M. C.,...Moraes, E. M. (2014). Interglacial microrefugia and diversification of a cactus species complex: Phylogeography and palaeodistributional reconstructions for *Pilosocereus aurisetus* and allies. *Molecular Ecology*, 23(12): 3044–3063.
- Braconnot, P., Otto-Bliesner, B., Harrison, S., Joussaume, S., Peterschmitt, J. Y., Abe-Ouchi, A.,...Zhao, Y. (2007). Results of PMIP2 coupled simulations of the Mid-Holocene and Last Glacial Maximum –Part 2: Feedbacks with emphasis on the location of the ITCZ and mid- and high latitudes heat budget. *Climate of the Past*, 3, 279–296.

- Bryson, R. W., García-Vázquez, U. O., & Riddle, B. R. (2011). Phylogeography of Middle American gophersnakes: Mixed responses to biogeographical barriers across the Mexican Transition Zone. *Journal of Biogeography*, 38(8): 1570–1584.
- Byrne, M. (2008). Evidence for multiple refugia at different time scales during Pleistocene climatic oscillations in southern Australia inferred from phylogeography. *Quaternary Science Reviews*, 27(27–28): 2576–2585.
- Calder, D. M., & Bernhardt, P. (1983). *The biology of mistletoes*. Sydney, Australia: Academic Press.
- Carnaval, A. C., Hickerson, M. J., Haddad, C. F. B., Rodrigues, M. T., & Craig Moritz, C. (2009). Stability predicts genetic diversity in the Brazilian Atlantic forest hotspot. *Science*, 323(5915): 785–789.
- Carstens, B. C., & Richards, C. L. (2007). Integrating coalescent and ecological niche modeling in comparative phylogeography. *Evolution*, 61(6): 1439–1454.
- Castellanos-Morales, G., Gámez, N., Castillo-Gámez, R. A., & Eguiarte, L. E. (2016). Peripatric speciation of an endemic species driven by Pleistocene climate change: The case of the Mexican prairie dog (*Cynomys mexicanus*). *Molecular Phylogenetics and Evolution*, 94(Pt A): 171–181.
- Chiang, T. Y., Schaal, B. A., & Peng, C. I. (1998). Universal primers for amplification and sequencing a noncoding spacer between the atpB and rbcL genes of chloroplast DNA. *Botanical Bulletin of the Academia Sinica*, 39, 245–250.
- Clark-Tapia, R., & Molina-Freaner, F. (2003). The genetic structure of a columnar cactus with a disjunct distribution: *Stenocereus gummosus* in the Sonoran desert. *Heredity*, 90(6): 443–450.
- Clement, M., Posada, D., & Crandall, K. A. (2000). TCS: A computer program to estimate gene genealogies. *Molecular Ecology*, 9(10): 1657–1659.
- Cocoletzi, E., Angeles, G., Ceccantini, G., Patrón, A., & Ornelas, J. F. (2016). Bidirectional anatomical effects in a mistletoe-host relationship: *Psittacanthus schiedeana* mistletoe and its hosts *Liquidambar styraciflua* and *Quercus germana*. *American Journal of Botany*, 103(6): 986–997.
- Collevatti, R. G., Rabelo, S. G., & Vieira, R. F. (2009). Phylogeography and disjunct distribution in *Lychnophora ericoides* (Asteraceae), an endangered cerrado shrub species. *Annals of Botany*, 104(4): 655–664.
- Collevatti, R. G., Grattapaglia, D., & Hay, J. D. (2013). Evidences for multiple maternal lineages of *Caryocar brasiliense* populations in the Brazilian Cerrado based on the analysis of chloroplast DNA sequences and microsatellite haplotype variation. *Molecular Ecology*, 12(1): 105–115.
- Collevatti, R. G., Castro, T. G., Lima, J. S., & Telles, M. P. C. (2012). Phylogeography of *Tibouchina papyrus* (Pohl) Toledo (Melastomataceae), an endangered tree species from rocky savannas, suggests bidirectional expansion due to climate cooling in the Pleistocene. *Ecology and Evolution*, 2(5): 1024–1035.
- Cornejo-Romero, A., Vargas-Mendoza, C. F., Aguilar-Martínez, G. F., Medina-Sánchez, J., Rendón-Aguilar, B., Valverde, P. L., . . . Jiménez-Sierra, C. (2017). Alternative glacial-interglacial refugia demographic hypotheses tested on *Cephalocereus columna-trajani* (Cactaceae) in the intertropical Mexican drylands. *PLoS ONE*, 2, e0175905.
- Dávila, P., Villaseñor, J. L., Medina, R., Ramírez, A., Salinas, A., Sánchez, J., & Tenorio, P. (1993). *Listados florísticos de México X. Flora del Valle de Tehuacán-Cuicatlán [Floristic lists of Mexico X. Flora of the Tehuacán-Cuicatlán Valley]*. DF, México: Instituto de Biología, UNAM.
- Davis, J. D., Pavlova, A., Thompson, R., & Sunnucks, P. (2013). Evolutionary refugia and ecological refuges: Key concepts for conserving Australian arid zone freshwater biodiversity under climate change. *Global Change Biology*, 19(7): 1970–1984.
- Díaz Infante, S., Lara, C., Arizmendi, M. C., Eguiarte, L. E., & Ornelas, J. F. (2016). Reproductive ecology and isolation of *Psittacanthus calyculatus* and *P. auriculatus* mistletoes (Loranthaceae). *PeerJ*, 4, e2491.
- Doyle, J. J., & Doyle, J. L. (1987). A rapid DNA isolation procedure from small quantities of fresh leaf tissue. *Phytochemical Bulletin*, 19(1): 11–15.
- Elith, J., Phillips, S. J., Hastie, T., Dudík, M., Chee, Y. E., & Yates, C. J. (2011). A statistical explanation of MaxEnt for ecologists. *Diversity and Distributions*, 17(1): 43–57.
- Excoffier, L., Smouse, P., & Quattro, J. (1992). Analysis of molecular variance inferred from metric distances among DNA haplotypes: Application to human mitochondrial DNA restriction data. *Genetics*, 131(2): 479–491.
- Excoffier, L., Laval, G., & Schneider, S. (2005). Arlequin ver. 3.0: An integrated software package for population genetics data analysis. *Evolutionary Bioinformatics Online*, 1, 47–50.
- Fehlberg, S. D., & Ranker, T. A. (2009). Evolutionary history and phylogeography of *Encelia farinosa* (Asteraceae) from the Sonoran, Mojave, and Peninsular Deserts. *Molecular Phylogenetics and Evolution*, 50(2): 326–335.
- Fielding, A. H., & Bell, J. F. (1997). A review of methods for the assessment of prediction errors in conservation presence/absence models. *Environmental Conservation*, 24(1): 38–49.
- Fu, Y. X. (1997). Statistical neutrality of mutations against population growth, hitchhiking and background selection. *Genetics*, 147(2): 915–925.
- Gándara, E., & Sosa, V. (2014). Spatio-temporal evolution of *Leucophyllum pringlei* and allies (Scrophulariaceae): A group endemic to North American xeric regions. *Molecular Phylogenetics and Evolution*, 76, 93–101.
- García-Mendoza, A. J., Ordóñez, M. J., & Briones-Salas, M. (2004). *Biodiversidad de Oaxaca*. México: Instituto de Biología, UNAM, Fondo Oaxaqueño para la Conservación de la Naturaleza, World Wildlife Fund.
- Garrick, R. C., Nason, J. D., Meadows, C. A., & Dyer, R. J. (2009). Not just vicariance: Phylogeography of a Sonoran Desert euphorb indicates a major role of range expansion along the Baja peninsula. *Molecular Ecology*, 18(9): 1916–1931.
- Gent, P. R., Danabasoglu, G., Donner, L. J., Holland, M. M., Hunke, E. C., Hayne, S. R., . . . Zhang, M. (2011). The community climate system model version 4. *Journal of Climate*, 24, 4973–4991.
- Gómez-Mendoza, L., Galicia, L., Cuevas-Fernández, M. L., Magaña, V., Gómez, G., & Palacio-Prieto, J. L. (2008). Assessing onset and length of greening period in six vegetation types in Oaxaca, Mexico, using NDVI-precipitation relationships. *International Journal of Biometeorology*, 52(6): 511–520.
- Gutiérrez-Flores, C., García-de León, F. J., León-de la Luz, J. L., & Cota-Sánchez, J. H. (2016). Microsatellite genetic diversity and mating systems in the columnar cactus *Pachycereus pringlei* (Cactaceae). *Perspectives in Plant Ecology, Evolution and Systematics*, 22(1): 1–10.

- Haffer, J. (1969). Speciation in Amazonian forest birds. *Science*, 165(3889): 131–137.
- Hammer, O. (2011). *PAST (Paleontological Statistics)* (Natural History Museum, University of Oslo). Retrieved from <http://folk.uio.no/ohammer/past/index.html>.
- Harpending, R. C. (1994). Signature of ancient population growth in a low-resolution mitochondrial DNA mismatch distribution. *Human Biology*, 66(4): 591–600.
- Hernández-Hernández, T., Colorado, W. B., & Sosa, V. (2013). Molecular evidence for the origin and evolutionary history of the rare American desert monotypic family Setchellanthaceae. *Organisms Diversity & Evolution*, 13(4): 485–496.
- Hewitt, G. M. (2000). The genetic legacy of the Quaternary ice ages. *Nature*, 405, 907–913.
- Hewitt, G. M. (2004). Genetic consequences of climatic oscillations in the Quaternary. *Philosophical Transactions of the Royal Society B, Biological Sciences*, 359(1442): 183–195.
- Hijmans, R. J., Cameron, S. E., Parra, J. L., Jones, P. G., & Jarvis, A. (2005). Very high resolution interpolated climate surfaces for global land areas. *International Journal of Climatology*, 25(15): 1965–1978.
- Hijmans, R. J., van Etten, J., Cheng, J., Mattiuzzi, M., Sumner, M., Greenberg, J. A., ... Shorridge, A. (2016). Raster: geographic data analysis and modeling. *R package version, 2.5(8)*.
- Instituto Nacional de Estadística, Geografía e Informática. (2007). Carta de Uso del Suelo y Vegetación, serie I (continuo nacional), escala 1:250000 [Land use and vegetation map. Series I, 1:250 000]. Mexico City, Mexico: Dirección de Ordenamiento Ecológico General e Instituto Nacional de Estadística, Geografía e Informática. Retrieved from <http://www.conabio-gob.mx/informacion/gis/layouts/usv250kcs1agw>.
- Intergovernmental Panel on Climate Change *Fourth assessment report of the intergovernmental panel on climate change*. Cambridge, England: Cambridge University Press.
- Jones, C. C., Acker, S. A., & Halpern, C. B. (2010). Combining local and large scale models to predict the distributions of invasive plant species. *Ecological Applications*, 20(2): 311–326.
- Kuijt, J. (2009). Monograph of *Psittacanthus* (Loranthaceae). *Systematic Botany Monographs*, 86, 1–361.
- Leite, Y. L. R., Costa, L. P., Loss, A. C., Rocha, R. G., Batalha-Filho, H., Bastos, A. C., ... Pardini, R. (2016). Neotropical forest expansion during the last glacial period challenges refuge hypothesis. *Proceedings of the National Academy of Sciences of the United States of America*, 113(4): 1008–1013.
- Loera, I., Ickert-Bond, S. M., & Sosa, V. (2017). Pleistocene refugia in the Chihuahuan Desert: The phylogeographic and demographic history of the gymnosperm *Ephedra compacta*. *Journal of Biogeography*, 44(12): 2706–2716.
- March, W. A., & Watson, D. M. (2010). The contribution of mistletoes to nutrient returns in a temperate eucalypt forest: Evidence for a critical role in nutrient cycling. *Austral Ecology*, 35(7): 713–721.
- Mathiasen, R. L., Nickrent, D. L., Shaw, D. C., & Watson, D. M. (2008). Mistletoes: Pathology, systematics, ecology, and management. *Plant Disease*, 92(7): 988–1006.
- Meng, H. H., Gao, X. Y., Huang, J. F., & Zhang, M. L. (2015). Plant phylogeography in arid Northwest China: Retrospectives and perspectives. *Journal of Systematics and Evolution*, 53(1): 33–46.
- Metcalf, S. E., O'Hara, S. L., Caballero, M., & Davies, S. J. (2000). Records of Late Pleistocene–Holocene climate change in Mexico—a review. *Quaternary Science Review*, 19(7): 699–721.
- Mittermeier, R. A., Robles Gil, P., Hoffman, M., Pilgrim, J., Brooks, T., Goettsch Mittermeier, C., ... da Fonseca, G. A. B. (2005). *Hotspots revisited: Earth's biologically richest and most endangered terrestrial ecoregions* Chicago, IL: University of Chicago Press, p. 392.
- Morrone, J. J. (2005). Hacia una síntesis biogeográfica de México [Towards a biogeographical synthesis of Mexico]. *Revista Mexicana de Biodiversidad*, 76(2): 207–252.
- Morrone, J. J. (2014). Biogeographical regionalisation of the Neotropical region. *Zootaxa*, 3782(1): 1–110.
- Myers, N., Mittermeier, R. A., Mittermeier, C. G., da Fonseca, G. A. B., & Kent, J. (2000). Biodiversity hotspots for conservation priorities. *Nature*, 403(6772): 853–858.
- Nason, J. D., Hamrick, J. L., & Fleming, T. H. (2002). Historical vicariance and postglacial colonization effects on the evolution of genetic structure in *Lophocereus*, a Sonoran desert columnar cactus. *Evolution*, 56(11): 2214–2226.
- Ndagurwa, H. G. T., Dube, J. S., & Mlambo, D. (2014). The influence of mistletoes on nutrient cycling in a semi-arid savannah, southwest Zimbabwe. *Plant Ecology*, 215(1): 15–26.
- Norton, D. A., & Carpenter, M. A. (1998). Mistletoes as parasites: Host specificity and speciation. *Trends in Ecology and Evolution*, 13(3): 101–105.
- Norton, D. A., & Reid, N. (1997). Lessons in ecosystem management from management of threatened and pest loranthaceous mistletoes in New Zealand and Australia. *Conservation Biology*, 11(3): 759–769.
- Ornelas, J. F., González de León, S., González, C., Licona-Vera, Y., Ortiz-Rodríguez, A. E., & Rodríguez-Gómez, F. (2015). Comparative palaeodistribution of eight hummingbird species reveal a link between genetic diversity and Quaternary habitat and climate stability in Mexico. *Folia Zoologica*, 64(3): 245–258.
- Ornelas, J. F., Gándara, E., Vásquez-Aguilar, A. A., Ramírez-Barahona, S., Ortiz-Rodríguez, A. E., González, C., ... Ruiz-Sánchez, E. (2016). A mistletoe tale: Postglacial invasion of *Psittacanthus schiedeanus* (Loranthaceae) to Mesoamerican cloud forests revealed by molecular data and species distribution modeling. *BMC Evolutionary Biology*, 16, 78.
- Pérez-Crespo, M. J., Ornelas, J. F., Martén-Rodríguez, S., González-Rodríguez, A., & Lara, C. (2016). Reproductive biology and nectar production of the Mexican endemic *Psittacanthus auriculatus* (Loranthaceae), a hummingbird-pollinated mistletoe. *Plant Biology*, 18(1): 73–83.
- Pérez-Crespo, M. J., Ornelas, J. F., González-Rodríguez, A., Ruiz-Sánchez, E., Vásquez-Aguilar, A. A., & Ramírez-Barahona, S. (2017). Phylogeography and population differentiation in the *Psittacanthus calyculatus* (Loranthaceae) mistletoe: A complex scenario of the climate-volcanism interaction along the Trans-Mexican Volcanic Belt. *Journal of Biogeography*, 44(11): 2501–2514.
- Perktas, U., Gür, H., & Ada, E. (2015). Historical demography of the Eurasian green woodpecker: Integrating phylogeography and ecological niche modelling to test glacial refugia hypothesis. *Folia Zoologica*, 64(3): 284–295.
- Peterson, A. T., & Nyári, Á. (2007). Ecological niche conservatism and Pleistocene refugia in the thrush-like mourner, *Schiffornis* sp., in the Neotropics. *Evolution*, 62(1): 173–183.



- Pfenninger, M., & Posada, D. (2002). Phylogeographic history of the land snail *Candidula unifasciata* (Helicellinae, Stylommatophora): Fragmentation, corridor migration, and secondary contact. *Evolution*, 56(9): 1776–1788.
- Phillips, S. J., Anderson, R. P., & Schapire, R. E. (2006). Maximum entropy modeling of species geographic distributions. *Ecological Modelling*, 190(3–4): 231–259.
- Pons, O., & Petit, R. J. (1996). Measuring and testing genetic differentiation with ordered versus unordered alleles. *Genetics*, 144(3): 1237–1245.
- R Development Core Team (2017) *R: A language and environment for statistical computing, reference index version 2.4.1*. Vienna, Austria: R Foundation for Statistical Computing.
- Ramírez-Arriaga, E., Prámparo, M. B., Nieto-Samaniego, A. F., Martínez-Hernández, A., Valiente-Banuet, A., Macías-Romo, C., & Dávalos-Álvarez, O. G. (2014). Palynological evidence for Middle Miocene vegetation in the Tehuacán Formation of Puebla, Mexico. *Palynology*, 38(1) 1–27.
- Ramírez-Arriaga, E., Prámparo, M. B., Nieto-Samaniego, A. F., & Valiente-Banuet, A. (2017). Eocene Mequitongo Formation palynoflora from the intertropical Tehuacán-Cuicatlán Valley, Mexico. *Review of Palaeobotany and Palynology*, 246, 14–31.
- Ramírez-Barahona, S., González, C., González-Rodríguez, A., & Ornelas, J. F. (2017). The influence of climatic niche preferences on the population genetic structure of a mistletoe species complex. *New Phytologist*, 214(4): 1751–1761.
- Rebernik, C. A., Schneeweiss, G. M., Bardy, K. E., Schonswetter, P., Villaseñor, J. L., Obermayer, R., . . . Weiss-Schneeweiss, H. (2010). Multiple Pleistocene refugia and Holocene range expansion of an abundant southwestern American desert plant species (*Melampodium leucanthum*, Asteraceae). *Molecular Ecology*, 19(16): 3421–3443.
- Riddle, B. R., & Hafner, D. F. (2006). A step-wise approach to integrating phylogeographic and phylogenetic biogeographic perspectives on the history of a core North American warm deserts biota. *Journal of Arid Environments*, 66(3): 435–461.
- Rodríguez-Gómez, F., & Ornelas, J. F. (2015). At the passing gate: Past introgression in the process of species formation between *Amazilia violiceps* and *A. viridifrons* hummingbirds along the Mexican Transition Zone. *Journal of Biogeography*, 42(7): 1305–1318.
- Rogers, A. R., & Harpending, H. (1992). Population growth makes waves in the distribution of pairwise differences. *Molecular Biology and Evolution*, 9(3): 552–569.
- Rojas-Soto, O., Espinosa de los Monteros, A., & Zink, R. M. (2007). Phylogeography and patterns of differentiation in the curve-billed thrasher. *The Condor*, 109, 456–463.
- Ruiz-Sanchez, E., & Specht, C. D. (2013). Influence of the geological history of the Trans-Mexican Volcanic Belt on the diversification of *Nolina parviflora* (Asparagaceae: Nolinoideae). *Journal of Biogeography*, 40(7): 1336–1347.
- Ruiz-Sanchez, E., Rodríguez-Gómez, F., & Sosa, V. (2012). Refugia and geographic barriers of populations of the desert poppy, *Hunnemannia fumarifolia* (Papaveraceae). *Organisms Diversity and Evolution*, 12(2): 133–143.
- Schneider, S., & Excoffier, L. (1999). Estimation of demographic parameters from the distribution of pairwise differences when the mutation rates vary among sites: Application to human mitochondrial DNA. *Genetics*, 152(3): 1079–1089.
- Scheinvar, E., Gámez, N., Castellanos-Morales, G., Aguirre-Planter, E., & Eguiarte, L. E. (2017). Neogene and Pleistocene history of *Agave lechuguilla* in the Chihuahuan Desert. *Journal of Biogeography*, 44(2): 322–334.
- Shreve, F. (1942). The desert vegetation of North America. *The Botanical Review*, 4(4): 195–246.
- Sosa, V., & De-Nova, A. (2012). Endemic angiosperm lineages in Mexico: Hotspots for conservation. *Acta Botánica Mexicana*, 100, 293–315.
- Sosa, V., Ruiz-Sánchez, E., & Rodríguez-Gómez, F. C. (2009). Hidden phylogeographic complexity in the Sierra Madre Oriental: The case of the Mexican tulip poppy *Hunnemannia fumarifolia* (Papaveraceae). *Journal of Biogeography*, 36(1): 18–27.
- Stewart, J. R., Lister, A. M., Barnes, I., & Dalén, L. (2010). Refugia revisited: Individualistic responses of species in space and time. *Proceedings of the Royal Society B, Biological Sciences*, 277(1682): 661–671.
- Strona, G. (2015). Past, present and future of host-parasite co-extinctions. *International Journal of Parasitology: Parasites and Wildlife*, 4(3): 431–441.
- Strona, G., Galli, P., & Fattorini, S. (2013). Fish parasites resolve the paradox of missing coextinctions. *Nature Communications*, 4, 1718.
- Taberlet, P., Gielly, L., Pautou, G., & Bouvet, J. (1991). Universal primers for amplification of three non-coding regions of chloroplast DNA. *Plant Molecular Biology*, 17(5): 1105–1109.
- Tajima, F. (1989). Statistical-method for testing the neutral mutation hypothesis by DNA polymorphism. *Genetics*, 123(3): 585–595.
- Turchetto-Zolet, A. C., Pinheiro, F., Salgueiro, F., & Palma-Silva, C. (2013). Phylogeographical patterns shed light on evolutionary process in South America. *Molecular Ecology*, 22(5): 1193–1213.
- van Vuuren, D., Edmonds, J., Kainuma, M., Riahi, K., Thomson, A., Hibbard, K., . . . Rose, S. (2011). The representative concentration pathways: An overview. *Climatic Change*, 109, 5.
- Vásquez-Cruz, M., & Sosa, V. (2016). New insights on the origin of the woody flora of the Chihuahuan Desert: The case of *Lindleya*. *American Journal of Botany*, 103, 1694–1707.
- Waltari, E., Perkins, S., Hijmans, R., Peterson, A. T., Nyári, Á., & Guralnick, R. (2007). Locating Pleistocene refugia: Comparing phylogeographic and ecological niche model predictions. *PLoS ONE*, 2, e563.
- Watanabe, M., Suzuki, T., O'ishi, R., Komuro, Y., Watanabe, S., Emori, S., . . . Kimoto, M. (2010). Improved climate simulation by MIROC5: Mean states, variability, and climate sensitivity. *Journal of Climate*, 23, 6312–6335.
- Watson, D. M. (2001). Mistletoe – A keystone resource in forests and woodlands worldwide. *Annual Review of Ecology and Systematics*, 32, 219–250.
- Watson, D. M. (2009). Parasitic plants as facilitators: More Dryad than Dracula? *Journal of Ecology*, 97(6): 1151–1159.
- Watson, D. M. (2015). Disproportionate declines in ground-foraging insectivores after mistletoe removal. *PLoS ONE*, 10, e0142992.
- Watson, D. M., & Herring, M. (2012). Mistletoe as a keystone resource: An experimental test. *Proceedings of the Royal Society B Biological Sciences*, 279, 3853–3860.