

Species-Area Relationships Induced by Forest Habitat Fragmentation Apply Even to Rarely Detected Organisms

Authors: Palmeirim, Ana Filipa, Fraga, Rafael de, Vieira, Marcus V., and Peres, Carlos A.

Source: Tropical Conservation Science, 14(1)

Published By: SAGE Publishing

URL: <https://doi.org/10.1177/19400829211017366>


BioOne Complete (complete.BioOne.org) is a full-text database of 200 subscribed and open-access titles in the biological, ecological, and environmental sciences published by nonprofit societies, associations, museums, institutions, and presses.

Your use of this PDF, the BioOne Complete website, and all posted and associated content indicates your acceptance of BioOne's Terms of Use, available at www.bioone.org/terms-of-use.

Usage of BioOne Complete content is strictly limited to personal, educational, and non - commercial use. Commercial inquiries or rights and permissions requests should be directed to the individual publisher as copyright holder.

BioOne sees sustainable scholarly publishing as an inherently collaborative enterprise connecting authors, nonprofit publishers, academic institutions, research libraries, and research funders in the common goal of maximizing access to critical research.

Species-Area Relationships Induced by Forest Habitat Fragmentation Apply Even to Rarely Detected Organisms

Tropical Conservation Science
Volume 14: 1–7
© The Author(s) 2021
Article reuse guidelines:
sagepub.com/journals-permissions
DOI: 10.1177/19400829211017366
journals.sagepub.com/home/trc


Ana Filipa Palmeirim¹ , Rafael de Fraga², Marcus V. Vieira³, and Carlos A. Peres¹

Abstract

Neotropical snakes have extremely low detection rates, hampering our understanding of their responses to habitat loss and fragmentation. We addressed this gap using a limited sample (50 individuals, 16 species) across 25 variable-size insular forest fragments within a hydroelectric lake and four adjacent mainland continuous forest sites, in Central Brazilian Amazonia. The number of species recorded on forest islands (1.55 ± 0.78) was much lower than that at continuous forest sites (5.0 ± 3.1), with no snakes being recorded at twelve islands smaller than 30 ha. As such, snake assemblages were positively affected by forest area, explaining 48% of the number of species, and negatively affected by island isolation. The markedly higher number of species recorded across continuous forest sites likely results from the availability of riparian habitats, which have virtually disappeared from the archipelagic landscape given the widespread inundation of lowland areas. To prevent further severe biodiversity loss, including those of poorly known rare taxa, conservation policies should avert the additional construction of mega-dams that create myriad of small islands, in addition to extensive reservoir lakes from which all riparian habitats are eliminated.

Keywords

habitat loss, hydroelectric dams, island biogeography, reservoir islands, snakes, reptiles, tropical forest

Introduction

Habitat loss and fragmentation worldwide are driving unprecedented biodiversity losses (Haddad et al., 2015; Sala et al., 2000). In the tropics, hydropower development has become one such driver, often creating extensive archipelagic landscapes of forest islands. These islands consist of forest patches corresponding to previous hilltops, that are now isolated within a hostile open-water matrix (Jones et al., 2016). Analogous to patterns observed for oceanic islands (Wilson & Willis, 1975), the effects of insular habitat fragmentation can be assessed in light of Island Biogeography Theory (MacArthur & Wilson, 1967), which predicts lower numbers of species in small, isolated habitat remnants. Although there is a growing number of studies examining species responses to this type of habitat disturbance, most of them are skewed towards birds and mammals (Jones et al., 2016).

Within reptiles, the cryptic habits, effective camouflage, and typical nocturnality of snakes render them rarely detectable, exacerbating the costs of field surveys

in tropical forests (Fraga et al., 2014). As a consequence, notwithstanding insights from temperate (Kjoss & Litvaitis, 2001; Luiselli & Capizzi, 1997) and subtropical regions (Wang et al., 2012), snake responses to habitat loss and fragmentation in the tropics are still poorly understood. Given their characteristics, including specific habitat requirements (Fraga et al., 2011, 2018),

¹Center for Ecology, Evolution and Conservation, School of Environmental Sciences, University of East Anglia, Norwich, UK

²Laboratório de Ecologia e Comportamento Animal, Universidade Federal do Oeste do Pará, Santarém, Brazil

³Laboratório de Vertebrados, Departamento de Ecologia, Universidade Federal do Rio de Janeiro, Rio de Janeiro, Brazil

Received 19 October 2020; Accepted 23 April 2021

Corresponding Author:

Ana Filipa Palmeirim, Center for Ecology, Evolution and Conservation, School of Environmental Sciences, University of East Anglia, Norwich NR4 7TJ, UK.

Email: anafilipalmeirim@gmail.com



Creative Commons Non Commercial CC BY-NC: This article is distributed under the terms of the Creative Commons Attribution-NonCommercial 4.0 License (<https://creativecommons.org/licenses/by-nc/4.0/>) which permits non-commercial use, reproduction and distribution of the work without further permission provided the original work is attributed as specified on the SAGE and Open Access pages (<https://us.sagepub.com/en-us/nam/open-access-at-sage>)

thermal constraints and limited mobility (Fitch & Shিরer, 1971), snakes are expected to be particularly sensitive to habitat disturbance. In fact, declines in snake populations have been widely reported (Doherty et al., 2020), which are considered to exert serious consequences on ecosystem functioning given their ecological roles as meso- and top-predators (Zipkin et al., 2020).

Given the overall lack of knowledge on snake resilience to habitat fragmentation and the extremely high cost associated with their surveys in tropical forests (e.g. up to US\$120 per individual encountered; Fraga et al., 2014), we here assess to what degree snake responses to habitat loss and fragmentation can still be detected based on an incomplete landscape-scale species inventory that was incidentally collected using a survey design primarily targeting lizards and small mammals. Data on snake assemblages were collected using 100 L-pitfall trapping which, despite the low trapping success (Ribeiro-Júnior et al., 2011, but see Cechin & Martins, 2000), are particularly useful to record small-bodied and (semi-) fossorial snakes (Ribeiro-Júnior et al., 2008). We surveyed 25 variable-size islands and four continuous forest sites within the Balbina Hydroelectric Reservoir and its immediate surroundings in Central Brazilian Amazonia. By the time sampling was carried out, islands had been isolated for 27 years which, given the longevity of relatively small-bodied snakes (e.g., six to 10 years for Colubridae and Dipsadidae, Ernst & Zug, 1996;

~3 years for Elapidae, Oliveira et al., 2005), is enough to allow up to nine generations to elapse. We therefore assumed that snake assemblages surveyed in this study had reached an extinction-colonization equilibrium. We hypothesized that many species have been gradually driven to local extinction in smaller and more isolated islands (MacArthur & Wilson, 1967), which are also subjected to more intense edge effects (Benchimol & Peres, 2015a; Malcolm, 1994).

Methods

This study was carried out in the archipelagic Balbina landscape in central Brazilian Amazonia (centroid coordinates: 1°41'33"S, 59°38'57"W; Figure 1A). The Balbina reservoir was formed in 1986, following the completion of a major dam on the Uatumã River, a left-bank tributary of the Amazon River. Within the 443,772-ha hydroelectric reservoir, a primary forest area of 312,900 ha was flooded (FUNCATE/INPE/ANEEL, 2000) and 3,546 forest islands were created. Most islands consist of dense closed-canopy terra-firme forest. The mean annual temperature in this region is 28°C and the mean annual rainfall is 2,376 mm (IBAMA, 1997).

We surveyed 25 islands ranging in size from 0.55 to 14,660 ha (mean \pm SD: 199 \pm 344 ha), and isolation distances from each focal island to the nearest mainland CF ranged from 44 to 11,872 m ($4,351 \pm 3,386$ m). As a

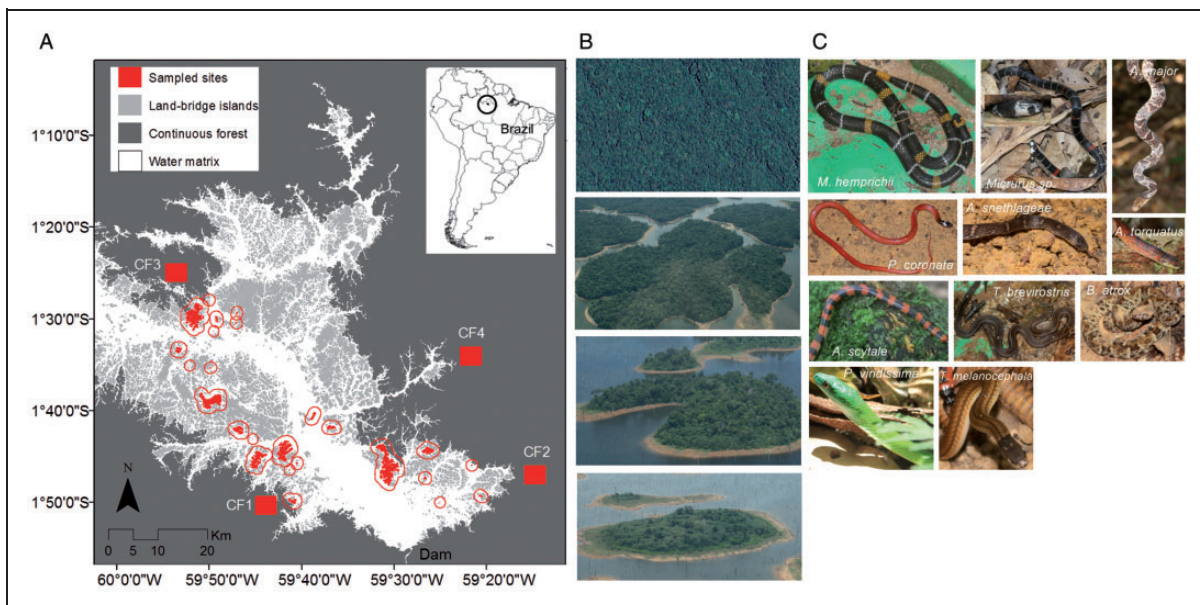


Figure 1. Overview of the study area and snake species recorded. (A) Surveyed sites within the Balbina Hydroelectric Reservoir of Central Brazilian Amazonia: 25 islands (in red and highlighted by a 1,000-m buffer contour) and four continuous forest sites (CF1, CF2, CF3 and CF4; indicated by red rectangles). (B) Aerial photographs illustrating a mainland continuous forest site (from Google Earth: earth.google.com/web/), a large, a midsize and small island (photo credit: E. M. Venticini). (C) Example of species recorded: only in continuous forest sites (1st row), in both continuous forest and islands (2nd row), only at islands (3rd row) and the two unique species recorded on mid-size islands (4th row). No species were recorded on small islands (≤ 30 ha).

baseline, we also surveyed four control continuous forest (CF) sites that are widely distributed throughout the reservoir and spaced apart by 200 m and 1,500 m from the nearest reservoir margin. Overall, CF sites were characterized by the nearby presence of riparian habitats (<500 m). In the particular case of CF2, half of the sampling sites therein ($N=5$) were positioned alongside riparian forest habitat along ~ 7 m-wide perennial streams. Due to logistical constraints, riparian habitat could not be sampled at other CF sites, so that all but five sampling sites within CF2 were positioned across an elevation gradient comparable to that of the surveyed islands.

Terrestrial and fossorial snakes were surveyed using 60-m long traplines, each of which consisting of three pitfall traps (buried 100-L buckets 68×57 cm) spaced 20-m apart and connected by a 50-cm high plastic fence, as adapted from Ribeiro-Júnior et al. (2011). The number of traplines placed at each sampling site was approximately proportional to its area. This allowed us to obtain a higher number of individuals at larger forest sites, where overall trap density, and consequently the probability of an individual moving near a trap, was lower (Table S1 in Supplementary Material 1). When analysing the data, however, we accounted for potential effects of a higher sampling effort at larger sites by including the corresponding sampling effort as an offset variable. Given the spatial restrictions on small islands, alternative smaller traplines were established therein (see details on sampling effort per site in Table S1).

Surveys were carried out from April to November in 2014 and in the same season in 2015, thereby excluding months of particularly high precipitation in the study area. We sampled 67 traplines during 16 consecutive days at each site over two field seasons, except for two CF sites which were sampled only during either the first or second field season (Table S1). In total, we sampled 5,952 pitfall-trap-days. In each field season, we sampled simultaneously a set of 10–15 trap-lines. Different sets of trap-lines were surveyed during separate occasions, yet in the same order in both sampling seasons to minimise any seasonal effects. All traps were checked on a daily basis, captured snakes were identified *in situ*, considering the most recent taxonomic updates (Uetz et al., 2020), and immediately released in the trapline vicinities. Snakes of a given species and similar body size were never captured along the same transect, so it is highly unlikely that any given individual was double-counted. This study followed the guidelines provided by the American Society of Ichthyologists and Herpetologists (Beaupre et al., 2004) and the institutional animal care and use committee of the Federal University of Rio de Janeiro (CEUA-CCS UFRJ, 2010), and was approved by the appropriate Brazilian government agency (SISBIO license No. 39187-4).

Based on high-resolution RapidEye© satellite imagery and using the ArcMap software (Environmental Systems Research Institute, 2018), at the landscape-scale, we calculated the Proximity index, which takes into account the distance to nearby islands and their aggregate area within a 500-m buffer around the sampling site (PROX; McGarigal et al., 2012), and the linear distance to continuous forest (DIST). At the patch-scale, we calculated the island area (AREA) and shape, as the island area divided by the perimeter (SHAPE) (see detailed description of each variable in Table S2). Whenever included in the analysis, CF sites were assigned AREA values one order of magnitude larger than our largest island (14,660 ha). To improve model fitting, AREA and PROX were log-transformed prior to analysis.

Due to the low numbers of snakes recorded, we summed the number of records for each sampling site during the two field seasons, and within sampling sites where more than one trapline was deployed. Also, given the overall low sampling sufficiency observed (see estimated sample coverage in Table S1 and rarefaction curves in Figure S1), we calculated the estimated number of species using the function ‘ChaoRichness’, an asymptotic diversity estimation function corresponding to the order of Hill numbers: $q=0$, using the ‘iNEXT’ R package (Hsieh et al., 2020). For subsequent analyses, we retained both the observed (S_{obs}) and the estimated number of species (S_{est}).

Patterns and predictors of both observed and estimated numbers of snake species were examined using Generalized Linear Models (GLMs) fitted with a Poisson and a Gamma distribution with a log-link function, respectively. To overcome any potential bias due to the inevitably higher sampling effort on larger forest sites, we considered sampling effort, defined as \log_{10} number of trap-days, as an *offset* variable in all the models performed. Patch and landscape variables were highly correlated when both islands and CF sites were considered, but not when only islands were considered (except for AREA and SHAPE, $r > 0.75$). For this reason, GLMs were first performed considering only forest area as an explanatory variable, both including and excluding CF sites. To examine thresholds beyond which species responses change abruptly, we applied a piecewise regression model including S_{obs} as the response and AREA ($\log_{10} x$) as the explanatory variable (Toms & Lesperance, 2003), using the ‘segmented’ R package (Muggeo, 2017).

We then repeated GLMs for S_{obs} and S_{est} considering all the uncorrelated variables – AREA, PROX and DIST – across the 25 forest islands. A candidate model set was constructed using all additive combinations of the explanatory variables, and with the offset variable describing the sampling effort. Models were ordered according to Akaike Information Criterion values

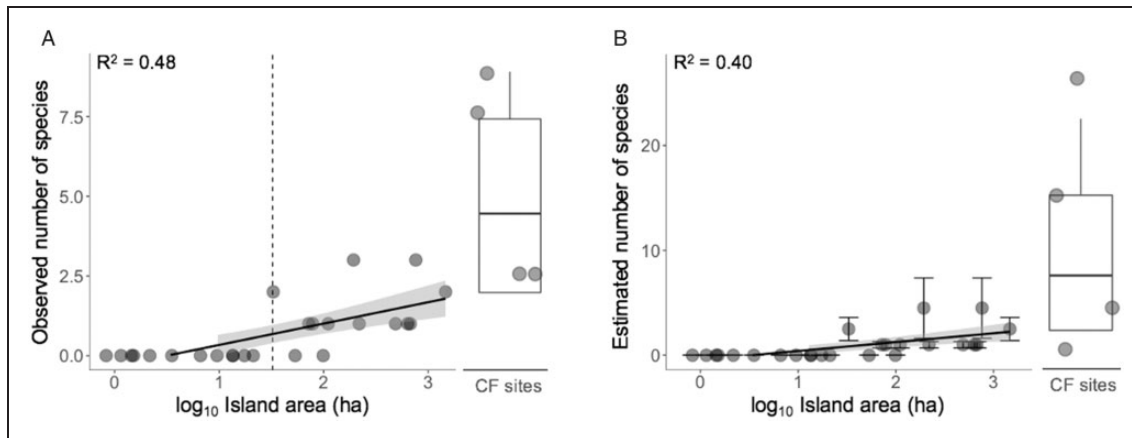


Figure 2. Species-Area Relationships of Snake Assemblages Across 25 Islands and Four Continuous Forest Sites Across the Balbina Archipelago Landscape, Considering the (A) Observed and (B) Estimated Number of Species. The vertical dashed line in (A) indicates the island size threshold (32.5 ha) below which all snake species could no longer be found. Lines are the model adjusted and shaded areas represent the 95% confidence regions. Boxplots indicate the median, 1st and 3rd quartiles, and minimum and maximum values of the observed/estimated number of species in continuous forest (CF) sites; dots indicate observed values.

corrected for small sample sizes (AICc: Burnham & Anderson, 2002), using the ‘MuMIn’ R package (Bartoń, 2016). The relative importance (RI) of each variable contained in the set of more plausible models (i.e. models having ΔAICc values between 0 and 2, considering $\Delta\text{AIC} = \text{AIC}_i - \text{AIC}_{\text{min}}$ in which $i = i^{\text{th}}$ model) was then obtained by the sum of the Akaike weights of the models where that variable was included (Rhodes et al., 2009). Explanatory variables were standardized ($x = 0$, $\sigma = 1$) before fitting each model to the data to place coefficient estimates on the same scale.

Results

On the basis of 5,952 trap-days, we recorded 50 snakes representing 16 species, 11 genera and six families, across 11 of the 25 islands surveyed and all four CF sites. Six species were exclusively recorded at CF sites, five on islands, and another five species were common to both sites (Table S3, Figure 1C). The most abundant species were the Dipsadidae *Atractus torquatus* ($N = 9$ records) and the Elapidae *Micrurus hemprichii* ($N = 8$), while only one individual (singletons) was recorded for five species. Excluding one record of an exceptionally large Lancehead pitviper *Bothrops atrox* (2,100 cm), snake mean body length ($\pm\text{SD}$) was relatively small: 660 ± 270 cm (200–1,000) (Figure S2).

The number of species recorded on forest islands (1.55 ± 0.78) was much lower than that at CF sites (5.0 ± 3.1). This difference held true when considering the estimated number of species (islands: 0.84 ± 1.30 , CF sites: 10.08 ± 8.49 ; Table S4). In fact, AREA positively affected S_{obs} when both including ($\beta = 0.760$, $P < 0.001$; $R^2 = 0.506$) and excluding CF sites ($\beta = 0.923$, $P = 0.010$;

$R^2 = 0.484$). This was also observed for S_{est} (including CF: $\beta = 1.664$, $P < 0.001$, $R^2 = 0.645$; excluding CF: $\beta = 2.898$, $P < 0.001$, $R^2 = 0.399$) (Table S5). Snake species could no longer be found below the island size threshold of 32.5 ha (Figure 2).

When additional metrics related to island isolation across the 25 forest islands surveyed were considered, observed numbers of species was primarily negatively affected by distance to mainland (RI = 0.83), but positively affected by proximity to other islands or continuous forest sites (RI = 0.50) and island size (RI = 0.21) (Table S6). The estimated number of species was best predicted by island size ($\beta = 3.738$, $P < 0.001$).

Discussion

Forest patch area is the most important predictor of the persistence of multiple vertebrate taxa across nearly the same set of survey sites at the Balbina archipelago, including mid-large vertebrates (91%: Benchimol & Peres, 2015b), small mammals (69%: Palmeirim et al., 2018), lizards (87%: Palmeirim et al., 2017) and birds (81%: Aurelio-Silva et al., 2016). Despite the small sample size, forest area also explained $\sim 50\%$ of the diversity of snakes at the Balbina archipelago. Our results are in agreement with general power of species-area relationships in explaining the remaining species diversity retained in the aftermath of habitat loss and insular fragmentation (Drakare et al., 2006; Lomolino, 2000). Similar findings were reported for snake assemblages on reservoir islands in sub-tropical China (Wang et al., 2012) and temperate fragmented landscapes (Kjoss & Litvaitis, 2001; Luiselli & Capizzi, 1997). Considering our disconcerting ignorance on the impacts of habitat

loss and fragmentation on neotropical snakes, the clear species-area relationship reported here represents an important preliminary tool in predicting extinctions of forest serpent species across archipelagic landscapes. In addition, island isolation further apparently imposed a barrier for at least the relatively small-bodied snakes recorded in this study. Indeed, smaller-bodied snakes may be less adept at crossing the aquatic matrix, as noticed for other reptile species (Jenkins et al., 2007; Schoener & Schoener, 1984), which inhibits their recolonization of more isolated islands.

Although we were still able to detect snake responses to habitat loss and insular fragmentation, the very low number of snake records ($N = 50$) compared against our considerable sampling effort (5,952 trap-days) suggests that pitfall trapping is relatively inefficient in comprehensively surveying snake assemblages at Balbina. Indeed, we expected to have recorded only one-quarter (16 species) of the total snake diversity (up to 65 species) that likely occurs in this region, as observed on the basis of long-term research carried out at a *terra firme* forest 120-km from our study area, the Duke Reserve (Fraga et al., 2013). Most species we recorded were relatively small, terrestrial or fossorial (Fraga et al., 2013), with large-bodied and most arboreal species being able to immediately exit even the 68-cm deep 100-L pitfall buckets following captures (AFP, pers. obs.). Yet, given that small-bodied snakes are also those that are least known across the Neotropics (Vilela et al., 2014), our results highlight that opportunistic data recorded from sufficiently large pitfall traps (>68 cm in depth) can be used to improve our knowledge on those smaller species, although the applicability of our conclusions is limited in terms of arboreal and aquatic species.

The markedly higher species richness recorded across mainland CF sites is likely to result from the availability of riparian habitats therein, which have virtually disappeared from the archipelagic landscape given the widespread inundation of lowland areas. In Amazonian forests, riparian habitats harbour a unique set of snake species (Fraga et al., 2011). Therefore, the consistent suppression of lowland forest areas by hydropower infrastructure, including major riparian habitats, is expected to have an enormous impact on snake assemblages, as already observed for lizards (Palmeirim et al., 2017). Further investigation is still needed to obtain consistent information on snake responses to habitat loss and fragmentation in island systems. Notwithstanding, to prevent further severe biodiversity loss, including those of poorly known rare taxa, conservation policies should avert the additional construction of mega-dams that create a myriad of small islands, in addition to extensive reservoir lakes from which riparian habitats are eliminated.

Acknowledgements

We thank all 15 volunteers/field assistants who assisted in the field; the Reserva Biológica do Uatumã and its staff for logistical support.


Declaration of Conflicting Interests

The author(s) declared no potential conflicts of interest with respect to the research, authorship, and/or publication of this article.

Funding

The author(s) disclosed receipt of the following financial support for the research, authorship, and/or publication of this article: This study was funded by the Áreas Protegidas da Amazônia (ARPA), Amazonas Distribuidora de Energia S. A., Associação Comunidade Waimiri Atroari; Rufford Foundation (grant 13675-1); Idea Wild; CNPq (grants 308.974/2015-8, 312465/2019-0 to MVV), and FAPERJ (grant E-203.045/2017 to MVV). AFP was funded by Coordenação de Aperfeiçoamento de Pessoal de Nível Superior (CAPES)—Finance Code 001, and the European Union's Horizon 2020 research and innovation program under the Marie Skłodowska-Curie grant agreement No. 792678.

ORCID iD

Ana Filipa Palmeirim  <https://orcid.org/0000-0003-3931-0578>

Supplemental Material

Supplemental material for this article is available online.

References

- Aurelio-Silva, M., Anciães, M., Henriques, L. M. P., Benchimol, M., & Peres, C. A. (2016). Patterns of local extinction in an Amazonian archipelagic avifauna following 25 years of insularization. *Biological Conservation*, *199*, 101–109.
- Bartoń, K. (2016). *MuMIn: Multi-model inference* (R package version 1.15.6). <https://cran.r-project.org/web/packages/MuMIn/index.html>
- Beaupre, S. J., Jacobson, E. R., Lillywhite, H. B., & Zamudio, K. (2004). *Guidelines for use of live amphibians and reptiles in field and laboratory research*. American Society of Ichthyologists and Herpetologists.
- Benchimol, M., & Peres, C. A. (2015a). Edge-mediated compositional and functional decay of tree assemblages in Amazonian forest islands after 26 years of isolation. *Journal of Ecology*, *103*, 408–420.
- Benchimol, M., & Peres, C. A. (2015b). Widespread forest vertebrate extinctions induced by a mega hydroelectric dam in lowland Amazonia. *PLoS One*, *10*, e0129818.
- Böhm, M., Williams, R., Bramhall, H. R., McMillan, K. M., Davidson, A. D., Garcia, A., Bland, L. M., Bielby, J., & Collen, B. (2016). Correlates of extinction risk in squamate reptiles: The relative importance of biology, geography,

- threat and range size. *Global Ecology and Biogeography*, 25, 391–405.
- Burnham, K. P., & Anderson, D. R. (2002). *Model selection and multi-model inference: A practical information-theoretic approach*. Springer-Verlag.
- Cechin, S. Z., & Martins, M. (2000). Eficiência de armadilhas de queda (pitfall traps) em amostragens de anfíbios e répteis no Brasil [Efficiency of pitfall traps for amphibian and reptile samplings in Brazil]. *Revista brasileira de zoologia*, 17, 729–740.
- CEUA-CCS UFRJ. (2010). *Comissão de Ética no Uso de Animais em Pesquisas da Universidade Federal do Rio de Janeiro* [Ethics Committee on the Use of Animals in Research at the Federal University of Rio de Janeiro]. <https://www.ccs.ufrj.br/conteudos/ceua>
- Doherty, T. S., Balouch, S., Bell, K., Burns, T. J., Feldman, A., Fist, C., Garvey, T. F., Jessop, T. S., Meiri, S., & Driscoll, D. A. (2020). Reptile responses to anthropogenic habitat modification: A global meta-analysis. *Global Ecology and Biogeography*, 29, 265–1279.
- Drakare, S., Lennon, J. J., & Hillebrand, H. (2006). The imprint of the geographical, evolutionary and ecological context on species–area relationships. *Ecology Letters*, 9, 215–227.
- Ernst, C. H., & Zug, G. R. (1996). *Snakes in question: The Smithsonian answer book*. Smithsonian Institution Press.
- Environmental Systems Research Institute. (2018). *ArcMap 10.1*.
- Fitch, H. S., & Shirer, H. W. (1971). A radiotelemetric study of spatial relationships in some common snakes. *Copeia*, 1, 118–128.
- Fraga, R., Ferrão, M., Stow, A. D., Magnusson W. E., & Lima, A. P. (2018). Different environmental gradients affect different measures of snake β -diversity in the Amazon rainforests. *PeerJ*, 6, e5628.
- Fraga, R., Lima, A. P., & Magnusson, W. E. (2011). Mesoscale spatial ecology of a tropical snake assemblage: The width of riparian corridors in central Amazonia. *The Herpetological Journal*, 21, 51–57.
- Fraga, R., Lima, A. P., Prudente, A. D. C., & Magnusson, W. E. (2013). *Guide to the snakes of the Manaus region—central Amazonia*. Editora INPA.
- Fraga, R., Stow, A. J., Magnusson, W. E., & Lima, A. P. (2014). The costs of evaluating species densities and composition of snakes to assess development impacts in Amazonia. *PLoS One*, 9, e105453.
- FUNCCATE/INPE/ANEEL (2000). *Mapeamento por satélite das áreas inundadas por reservatórios de hidrelétricas brasileiras* [Satellite mapping of areas flooded by Brazilian hydroelectric reservoirs] (Unpublished Report Convênio).
- Haddad, N. M., Brudvig, L. A., Clobert, J., Davies, K. F., Gonzalez, A., Holt, R. D., Lovejoy, T. E., Sexton, J. O., Austin, M. P., Collins, C. D., Cook, W. M., Damschen, E. I., Ewers, R. M., Foster, B. L., Jenkins, C. N., King, A. J., Laurance, W. F., Levey, D. J., Margules, C. R., & Cook, W. M. (2015). Habitat fragmentation and its lasting impact on Earth's ecosystems. *Science Advances*, 1, e1500052.
- Hsieh, T. C., Ma, K. H., & Chao, A. (2020). *Interpolation and extrapolation for species diversity* (R package version 2.0.20). <https://cran.r-project.org/web/packages/iNEXT/index.html>
- IBAMA. (1997). *Plano de Manejo Fase I: Reserva Biológica do Uatumã* [Management Plan Phase I: Uatumã Biological Reserve]. <http://www.icmbio.gov.br>
- Jenkins, D. G., Brescacin, C. R., Duxbury, C. V., Elliott, J. A., Evans, J. A., Grablow, K. R., Hillegass, M., Lyon, B. N., Metzger, G. A., Olandese, M. L., Pepe, D., Silvers, G. A., Suresch, H. N., Thompson, T. N., Trexler, C. M., Williams, G. E., Williams, N. C., Williams, S. E., & Pepe, D. (2007). Does size matter for dispersal distance?. *Global Ecology and Biogeography*, 16, 415–425.
- Jones, I. L., Bunnefeld, N., Jump, A. S., Peres, C. A., & Dent, D. H. (2016). Extinction debt on reservoir land-bridge islands. *Biological Conservation*, 199, 75–83.
- Kjoss, V. A., & Litvaitis, J. A. (2001). Community structure of snakes in a human-dominated landscape. *Biological Conservation*, 98, 285–292.
- Lomolino, M. V. (2000). Ecology's most general, yet protean pattern: The species–area relationship. *Journal of Biogeography*, 27, 17–26.
- Luiselli, L., & Capizzi, D. (1997). Influences of area, isolation and habitat features on distribution of snakes in Mediterranean fragmented woodlands. *Biodiversity & Conservation*, 6, 1339–1351.
- MacArthur, R. H., & Wilson, E. O. (1967). *The theory of island biogeography*. Princeton University Press.
- Malcolm, J. R. (1994). Edge effects in central Amazonian forest fragments. *Ecology*, 75, 2438–2445.
- Matthews, T. J., Triantis, K. A., Whittaker, R. J., & Guilhaumon, F. (2019). sars: An R package for fitting, evaluating and comparing species–area relationship models. *Ecography*, 42, 1446–1455.
- McGarigal, K., Cushman, S.A., & Ene, E. (2012). *FRAGSTATS v4: Spatial pattern analysis program for categorical and continuous maps*. <https://www.umass.edu/landeco/research/fragstats/fragstats.html>
- Muggeo, V. M. R. (2017). *Segmented: Regression models with break-points change-points estimation* (R package version 0.5-2.1). <https://cran.r-project.org/web/packages/segmented/index.html>
- Oliveira, L., Almeida-Santos, S. M., Costa, A. C. O. R., Scartozzoni, R. R., Germano, V. J., & Salomão, M. G. (2005). Manutenção de serpentes em cativeiro no Instituto Butantan: I - A longevidade do gênero *Micrurus* [Maintenance of snakes in captivity at the Butantan Institute: I – The longevity of the genus *Micrurus*]. *Publicações Avulsas do Instituto Pau Brasil*, 8(9), 55–61.
- Palmeirim, A. F., Benchimol, M., Vieira, M. V., & Peres, C. A. (2018). Small mammal responses to Amazonian forest islands are modulated by their forest dependence. *Oecologia*, 187, 191–204.
- Palmeirim, A. F., Vieira, M. V., & Peres, C. A. (2017). Non-random lizard extinctions in land-bridge Amazonian forest islands after 28 years of isolation. *Biological Conservation*, 214, 55–65.
- R Development Core Team. (2015). *R: A language and environment for statistical computing*. R Foundation for Statistical Computing.

- Rhodes, J. R., McAlpine, C. A., Zuur, A. F., Smith, G. M., & Ieno, E. N. (2009). GLMM applied on the spatial distribution of koalas in a fragmented landscape. In A. F. Zuur, E. N. Ieno, N. J. Walker, A. A. Saveliev, & G. M. Smith (Eds.), *Mixed effects models and extensions in ecology with R* (pp. 469–492). Springer.
- Ribeiro-Júnior, M. A., Gardner, T. A., & Ávila-Pires, T. C. (2008). Evaluating the effectiveness of herpetofaunal sampling techniques across a gradient of habitat change in a tropical forest landscape. *Journal of Herpetology*, *42*(4), 733–749.
- Ribeiro-Júnior, M. A., Rossi, R. V., Miranda, C. L., & Ávila-Pires, T. C. (2011). Influence of pitfall trap size and design on herpetofauna and small mammal studies in a Neotropical Forest. *Zoologia (Curitiba)*, *28*, 80–91.
- Sala, O. E., Chapin, F. S., Armesto, J. J., Berlow, E., Bloomfield, J., Dirzo, R., ... Leemans, R. (2000). Global biodiversity scenarios for the year 2100. *Science*, *287*, 1770–1774.
- Schoener, A., & Schoener, T. W. (1984). Experiments on dispersal: Short-term floatation of insular anoles, with a review of similar abilities in other terrestrial animals. *Oecologia*, *63*, 289–294.
- Sung, Y. H., Karraker, N. E., & Hau, B. C. (2011). Evaluation of the effectiveness of three survey methods for sampling terrestrial herpetofauna in South China. *Herpetological Conservation and Biology*, *6*, 479–489.
- Toms, J. D., & Lesperance, M. L. (2003). Piecewise regression: A tool for identifying ecological thresholds. *Ecology*, *84*, 2034–2041.
- Uetz, P., Freed, P., & Hošek, J. (Eds.) (2020). *The reptile database*. <http://www.reptile-database.org>
- Vilela, B., Villalobos, F., Rodríguez, M. Á., & Terribile, L. C. (2014). Body size, extinction risk and knowledge bias in New World snakes. *PLoS One*, *9*, e113429.
- Wang, Y., Wang, X., & Ding, P. (2012). Nestedness of snake assemblages on islands of an inundated lake. *Current Zoology*, *58*, 828–836.
- Wilson, E. O., & Willis, E. O. (1975). Applied biogeography. In M. L. Cody (Ed.), & J. M. Diamond (Eds.), *Ecology and evolution of communities* (pp. 522–534). The Harvard University Press.
- Zipkin, E. F., DiRenzo, G. V., Ray, J. M., Rossman, S., & Lips, K. R. (2020). Tropical snake diversity collapses after widespread amphibian loss. *Science*, *367*, 814–816.