



# BioOne COMPLETE

---

## Table of Contents

Source: The Auk, 129(4)

Published By: American Ornithological Society

URL: <https://doi.org/10.1525/auk.2012.129.4.toc>

---

BioOne Complete ([complete.BioOne.org](http://complete.BioOne.org)) is a full-text database of 200 subscribed and open-access titles in the biological, ecological, and environmental sciences published by nonprofit societies, associations, museums, institutions, and presses.

Your use of this PDF, the BioOne Complete website, and all posted and associated content indicates your acceptance of BioOne's Terms of Use, available at [www.bioone.org/terms-of-use](http://www.bioone.org/terms-of-use).

---

BioOne sees sustainable scholarly publishing as an inherently collaborative enterprise connecting authors, nonprofit publishers, academic institutions, research libraries, and research funders in the common goal of maximizing access to



## CONTENTS

### PERSPECTIVES IN ORNITHOLOGY

- 589 ADAPTIVE BREEDING-HABITAT SELECTION: IS IT FOR THE BIRDS? *Anna D. Chalfoun and Kenneth A. Schmidt*

### RESEARCH ARTICLES

#### BEHAVIOR AND BEHAVIORAL ECOLOGY

- 600 GREATER SAGE-GROUSE (*CENTROCERCUS UROPHASIANUS*) SELECT NEST SITES AND BROOD SITES AWAY FROM AVIAN PREDATORS. *Jonathan B. Dinkins, Michael R. Conover, Christopher P. Kirol, and Jeffrey L. Beck*
- 611 STABLE ASSOCIATIONS WITHIN FLOCKS OF GREATER SNOW GEESE (*CHEN CAERULESCENS ATLANTICA*): DO THEY EXIST BEYOND FAMILY BONDS? *Meggie Desnoyers, Gilles Gauthier, and Josée Lefebvre*
- 623 HIGH LEVELS OF RELATEDNESS BETWEEN BROWN-HEADED COWBIRD (*MOLOTHRUS ATER*) NESTMATES IN A HEAVILY PARASITIZED HOST COMMUNITY. *James W. Rivers, Sarah Young, Elena G. Gonzalez, Brent Horton, Justin Lock, and Robert C. Fleischer*
- 632 WHEN AND WHY DOES MY MOTHER LEAVE ME? THE QUESTION OF BROOD DESERTION IN THE DOVEKIE (*ALLE ALLE*). *Katarzyna Wojczulanis-Jakubas and Dariusz Jakubas*
- 638 EXPERIMENTAL EVIDENCE THAT NESTING DUCKS USE MAMMALIAN URINE TO ASSESS PREDATOR ABUNDANCE. *Michael W. Eichholz, John A. Dassow, Joshua D. Stafford, and Patrick J. Weatherhead*

#### METHODS AND STATISTICS

- 645 LARGE-SCALE MONITORING OF SHOREBIRD POPULATIONS USING COUNT DATA AND *N*-MIXTURE MODELS: BLACK OYSTERCATCHER (*HAEMATOPUS BACHMANI*) SURVEYS BY LAND AND SEA. *James E. Lyons, J. Andrew Royle, Susan M. Thomas, Elise Elliott-Smith, Joseph R. Evenson, Elizabeth G. Kelly, Ruth L. Milner, David R. Nysewander, and Brad A. Andres*
- 653 USE OF FEATHER LOSS INTERVALS TO ESTIMATE MOLT DURATION AND TO SAMPLE FEATHER VEIN AT EQUAL TIME INTERVALS THROUGH THE PRIMARY REPLACEMENT. *Sievert Rohwer and Kristin Broms*
- 660 SEXUALLY SELECTED SIGNALING IN BIRDS: A CASE FOR BAYESIAN CHANGE-POINT ANALYSIS OF BEHAVIORAL ROUTINES. *Tobias Roth, Philipp Sprau, Marc Naguib, and Valentin Amrhein*

#### MIGRATION

- 670 ONE SPECIES BUT TWO PATTERNS: POPULATIONS OF THE HUDSONIAN GODWIT (*LIMOSA HAEMASTICA*) DIFFER IN SPRING MIGRATION TIMING. *Nathan R. Senner*

- 683 SITE-SPECIFIC VARIATION IN FOOD RESOURCES, SEX RATIOS, AND BODY CONDITION OF AN OVERWINTERING MIGRANT SONGBIRD. *Jason M. Townsend, Christopher C. Rimmer, Kent P. McFarland, and James E. Goetz*

- 691 CHANGES IN THE ANNUAL CYCLE OF NORTH AMERICAN RAPTORS ASSOCIATED WITH RECENT SHIFTS IN MIGRATION TIMING. *Josh Van Buskirk*

#### PALEONTOLOGY

- 699 A MARABOU (CICONIIDAE: *LEPTOPTILOS*) FROM THE MIDDLE PLEISTOCENE OF NORTHEASTERN CHINA. *Zihui Zhang, Yunping Huang, Helen F. James, and Lianhai Hou*

#### PARASITES AND DISEASE

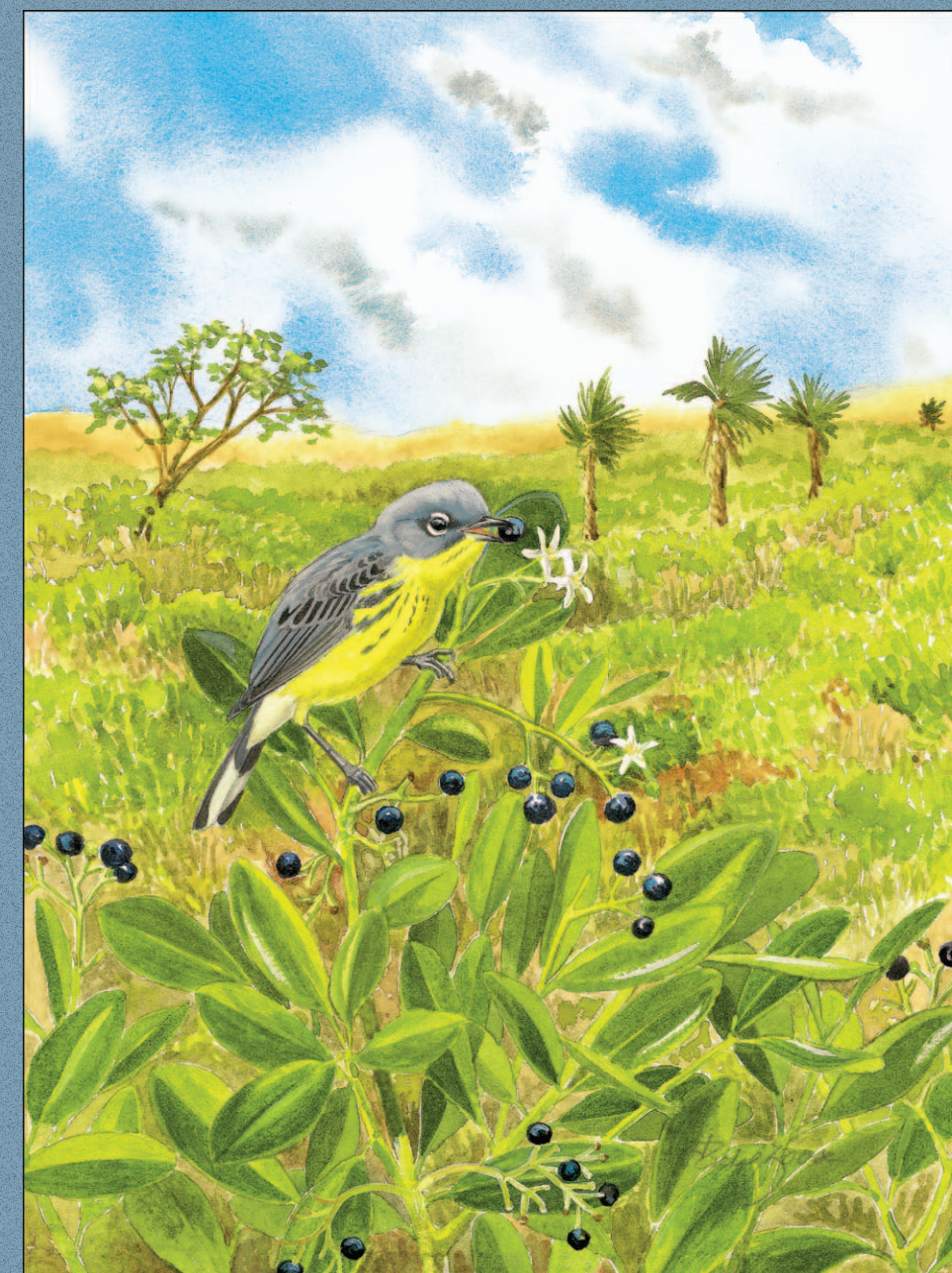
- 707 ARBOVIRUS INFECTION IS A MAJOR DETERMINANT OF FITNESS IN HOUSE SPARROWS (*PASSER DOMESTICUS*) THAT INVADE CLIFF SWALLOW (*PETROCHELIDON PYRRHONOTA*) COLONIES. *Valerie A. O'Brien and Charles R. Brown*
- 716 BLOOD PARASITE INFECTION AND HETEROZYGOSITY IN PURE AND GENETIC-HYBRID GOLDEN-WINGED WARBLERS (*VERMIVORA CHRYSOPTERA*) ACROSS CANADA. *Rachel Vallender, Roger D. Bull, Laurel L. Moulton, and Raleigh J. Robertson*

#### POPULATION BIOLOGY AND DEMOGRAPHY

- 725 ANNUAL SURVIVAL OF RED KNOTS (*CALIDRIS CANUTUS RUFUS*) WINTERING IN FLORIDA. *Amy C. Schwarzer, Jaime A. Collazo, Lawrence J. Niles, Janell M. Brush, Nancy J. Douglass, and H. Franklin Percival*
- 734 EL NIÑO–SOUTHERN OSCILLATION INFLUENCES ANNUAL SURVIVAL OF A MIGRATORY SONGBIRD AT A REGIONAL SCALE. *Joseph A. LaManna, T. Luke George, James F. Saracco, M. Philip Nott, and David F. DeSante*
- 744 CARRY-OVER EFFECTS OF WINTER CLIMATE ON SPRING ARRIVAL DATE AND REPRODUCTIVE SUCCESS IN AN ENDANGERED MIGRATORY BIRD, KIRTLAND'S WARBLER (*SETOPHAGA KIRTLANDII*). *Sarah M. Rockwell, Carol I. Bocetti, and Peter P. Marra*

#### REPRODUCTIVE AND BREEDING BIOLOGY

- 753 SHIFTS IN BREEDING PHENOLOGY AS A RESPONSE TO POPULATION SIZE AND CLIMATIC CHANGE: A COMPARISON BETWEEN SHORT- AND LONG-DISTANCE MIGRANT SPECIES. *Aggeliki Doxa, Alexandre Robert, Alain Crivelli, Giorgos Catsadorakis, Theodoros Naziridis, Harris Nikolaou, Frederic Jiguet, and Konstantinos Theodorou*



## Contents (continued)



- 763 BREEDING HABITAT REQUIREMENTS AND COLONY FORMATION BY ROYAL TERNS (*THALASSEUS MAXIMUS*) AND SANDWICH TERNS (*T. SANDVICENSIS*) ON BARRIER ISLANDS IN THE GULF OF MEXICO. *Edward J. Raynor, Aaron R. Pierce, Cecilia M. Leumas, and Frank C. Rohwer*
- 773 PARENTAL BEHAVIOR AND REPRODUCTIVE OUTPUT IN MALE-ONLY CARED AND FEMALE-ONLY CARED CLUTCHES IN THE EURASIAN PENDULINE TIT (*REMIZ PENDULINUS*). *Ákos Pogány, René E. van Dijk, Péter Horváth, and Tamás Székely*

### MEMORIALS

- 782 IN MEMORIAM: ALFRED M. DUFTY, JR., 1950–2012. *Jim Belthoff*
- 785 IN MEMORIAM: PHILIP STRONG HUMPHREY, 1926–2009. *Thomas E. Lovejoy*

- 787 IN MEMORIAM: MARY ANNE HEIMERDINGER CLENCH, 1932–2011. *Jerome A. Jackson*
- 789 IN MEMORIAM: LAURENCE CHARLES BINFORD: 1935–2009. *AOU Committee on Memorials*
- 790 IN MEMORIAM: EVGENY N. KUROCHKIN, 1940–2011. *Storrs L. Olson*

### BOOK REVIEWS

- 792 BOOK REVIEWS. *Edited by R. Todd Engstrom*

### POSTSCRIPT

- 797 100 YEARS AGO IN THE AMERICAN ORNITHOLOGISTS' UNION. *Kimberly G. Smith*
- 799 REVIEWERS FOR *THE AUK*, 2012

SPANISH TRANSLATION: CARLOS DANIEL CADENA, CINTIA CORNELIUS, AND LUCIO R. MALIZIA  
FRENCH TRANSLATION: HÉLÈNE SÉNÉCHAL