

## **Neotypification of *Bauhinia Malabarica* Roxb. (Fabaceae)**

Authors: Bandyopadhyay, Subir, and Pathak, Mithilesh Kumar

Source: *Candollea*, 68(2) : 193-195

Published By: The Conservatory and Botanical Garden of the City of Geneva (CJBG)

URL: <https://doi.org/10.15553/c2012v682a2>

---

BioOne Complete ([complete.BioOne.org](https://complete.BioOne.org)) is a full-text database of 200 subscribed and open-access titles in the biological, ecological, and environmental sciences published by nonprofit societies, associations, museums, institutions, and presses.

Your use of this PDF, the BioOne Complete website, and all posted and associated content indicates your acceptance of BioOne's Terms of Use, available at [www.bioone.org/terms-of-use](https://www.bioone.org/terms-of-use).

Usage of BioOne Complete content is strictly limited to personal, educational, and non - commercial use. Commercial inquiries or rights and permissions requests should be directed to the individual publisher as copyright holder.

---

BioOne sees sustainable scholarly publishing as an inherently collaborative enterprise connecting authors, nonprofit publishers, academic institutions, research libraries, and research funders in the common goal of maximizing access to critical research.

# Neotypification of *Bauhinia malabarica* Roxb. (Fabaceae)

Subir Bandyopadhyay & Mithilesh Kumar Pathak

## Abstract

BANDYOPADHYAY, S. & M. K. PATHAK (2013). Neotypification of *Bauhinia malabarica* Roxb. (Fabaceae). *Candollea* 68: 193-195. In English, English and French abstracts.

A neotype is designated for *Bauhinia malabarica* Roxb. (= *Piliostigma malabaricum* (Roxb.) Benth.) (Fabaceae).

## Key-words

FABACEAE – CAESALPINIOIDEAE – *Piliostigma* – Neotypification

## Résumé

BANDYOPADHYAY, S. & M. K. PATHAK (2013). Néotypification de *Bauhinia malabarica* Roxb. (Fabaceae). *Candollea* 68: 193-195. En anglais, résumés anglais et français.

Un néotype est désigné pour *Bauhinia malabarica* Roxb. (= *Piliostigma malabaricum* (Roxb.) Benth.) (Fabaceae).

---

Address of the authors: Central National Herbarium, Botanical Survey of India, P.O. Botanic Garden, Howrah - 711103, West Bengal, India.

Email (SB): [subirbandyopadhyay@yahoo.com](mailto:subirbandyopadhyay@yahoo.com)

Submitted on November 22, 2012. Accepted on June 24, 2013.

Edited by P. Bungener

ISSN: 0373-2967 – Online ISSN: 2235-3658 – *Candollea* 68(2): 193-195 (2013)

© CONSERVATOIRE ET JARDIN BOTANIQUES DE GENÈVE 2013

ROXBURGH (1832: 321) in the protologue of *Bauhinia malabarica* Roxb. (*Fabaceae: Caesalpinioideae*) stated “[a] pretty large tree, a native of Malabar, in the Botanic garden at Calcutta, young trees four or five years old from the seed, are about twenty feet high, their stems about as thick as a man’s thigh; coma very ramous, with its numerous, smooth, slender, flexuose branchlets, drooping. It begins to blossom in October and November.” We referred to STAFLEU & COWAN (1983) who have stated Roxburgh’s main collection to be at K. Substantial duplicate sets are also at BM, BR, E, G, and LIV and small sets at A, B-W, C, DBN, E, FI, NY, OXF, P, PH, and UPS. Consultation of the publication of FORMAN (1997) reveals that there is no Roxburgh collection of *B. malabarica* at K. We communicated with the curators of all the other aforesaid herbaria and found that there are Roxburgh collections of *B. malabarica* only in E, BM and P.

The herbarium sheet of *B. malabarica* at E [E00499899] has a small label with the name Roxburgh written on it. This specimen comprises two mature and a few immature leaves, besides, two separate leaves and two separate pods mounted on the sheet. They are, however, not on *B. malabarica*, and are likely to be from a specimen of *B. purpurea* L. There is an inscription on the sheet written in pencil: “*B. malabarica*” accompanied by a question mark, this annotation probably by David Prain. The herbarium sheet at BM [BM001001035] has a label on which is written: “India Orientalis – Dr. Roxburgh (1813)” with the name “*Bauhinia malabarica*” written on a separate piece of paper. There are three specimens mounted on this sheet and all of them are of *B. malabarica*. The top specimen is sterile (leaves only). The middle and bottom specimens have male inflorescences and leaves. Although ROXBURGH (1832: 321) in his protologue of *B. malabarica* described only male flowers, there is no evidence that he used these specimens to describe *B. malabarica* nor that any of them represent a duplicate of the specimen(s) actually used by him. The handwriting on the sheet does not match that of Roxburgh (see FORMAN, 1997). The herbarium sheets at P [P02744676 and P02744679] carry labels on which is written: “Roxburgh, India” together with “*Bauhinia malabarica*” on separate slips of paper. The handwriting style of “*Bauhinia malabarica*” on specimen P02744676 is very similar to that on BM [BM001001035] and does not match that of Roxburgh.

There is no Roxburgh’s “Flora Indica” drawing of *B. malabarica* at K (SEALY, 1956) or CAL (SANJAPPA & al., 1994).

Due to the lack of any conclusive evidence that any of the above mentioned specimens are part of the original type material we here propose as a neotype of *B. malabarica* Roxb. a specimen which was originally part of Roxburgh’s herbarium.

*Bauhinia malabarica* Roxb., Fl. Ind. ed. 1832: 321. 1832.

= *Bauhinia malabarica* Roxb., Hort. Bengal.: 31. 1814 [nom. nud.].

= *Piliostigma malabaricum* (Roxb.) Benth. in Miq., Pl. Jungh.: 261. 1852.

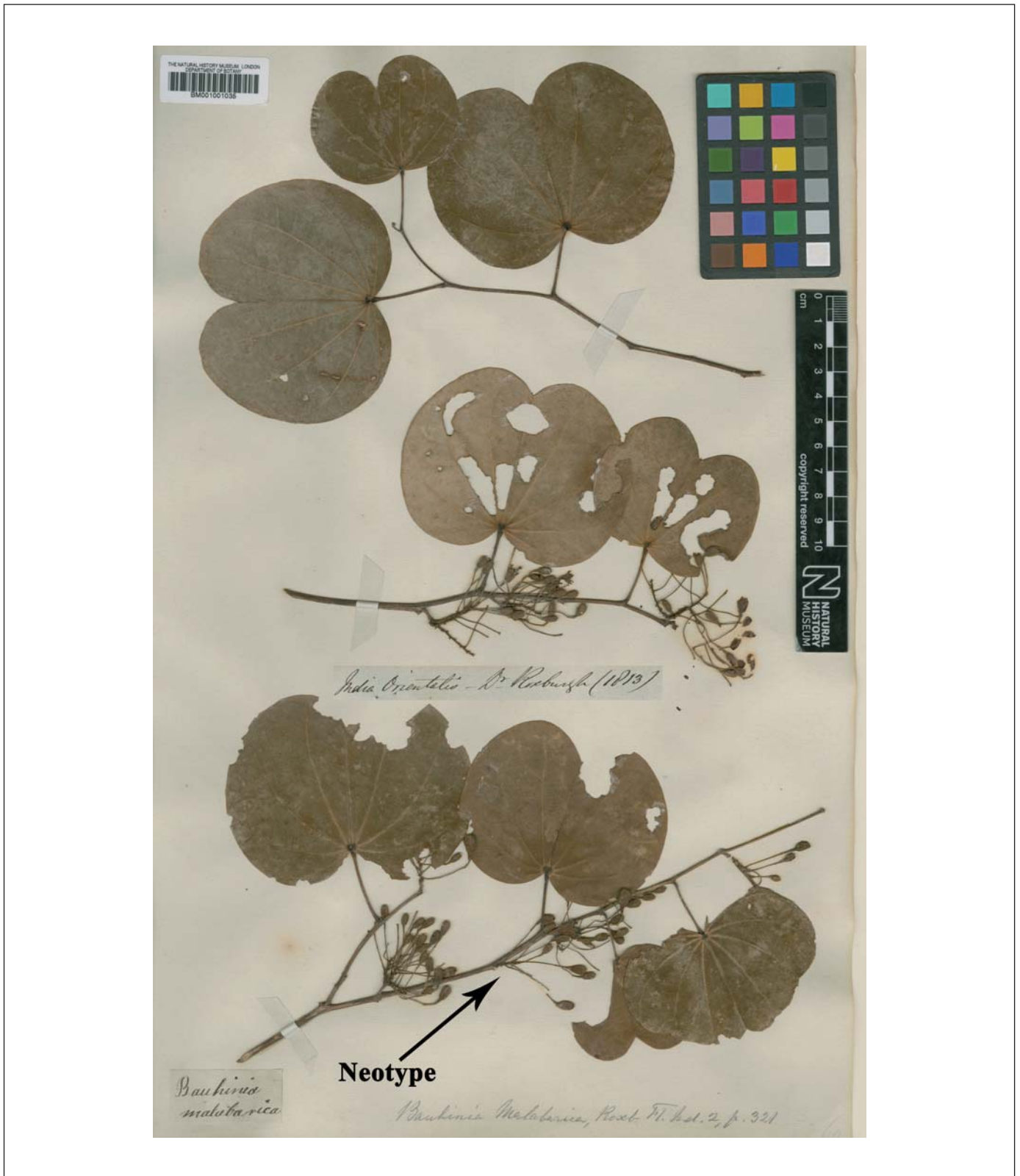
**Neotypus** (designed here): **INDIA:** India Orientalis, 1813, *Roxburgh s.n.* (BM [BM001001035], arrow) (Fig. 1).

## Acknowledgements

We thank the Director, Botanical Survey of India and Additional Director, Central National Herbarium, BSI for facilities, the curators of K, BM, BR, E, G, LIV, A, B-W, C, DBN, E, FI, NY, OXF, P, PH, and UPS for their help and Jonathan Gregson, at the Natural History Museum, London for kindly informing us that both specimens mounted on the BM sheet have male inflorescences.

## References

- FORMAN, L. L. (1997). Notes concerning the typification of names of William Roxburgh’s species of phanerogams. *Kew Bull.* 52: 513-534.
- ROXBURGH, W. (1832). *Bauhinia*. *Fl. Ind.* ed. Carey 2: 318-332. Calcutta, London.
- SANJAPPA, M., K. THOTHATHRI & A. R. DAS (1994). Roxburgh’s Flora Indica drawings at Calcutta. *Bull. Bot. Surv. India* 33.
- SEALY, J. R. (1956). The Roxburgh Flora Indica Drawings at Kew. *Kew Bull.* 11: 297-348.
- STAFLEU, F. A. & R. S. COWAN (1983). *Taxonomic Literature*. Vol.4. Bohn, Scheltama & Holkenia.



**Fig. 1.** – Neotype of *Bauhinia malabarica* Roxb. (designated by an arrow).  
[Roxburgh s.n., BM] [© Natural History Museum, London. Reproduced with permission]