



## **Land Cover Change and Gully Development Between 1965 and 2000 in Umbulo Catchment, Ethiopia**

Authors: Moges, Awdenegest, and Holden, Nicholas M.

Source: Mountain Research and Development, 29(3) : 265-276

Published By: International Mountain Society

URL: <https://doi.org/10.1659/mrd.00015>

---

BioOne Complete ([complete.BioOne.org](https://complete.BioOne.org)) is a full-text database of 200 subscribed and open-access titles in the biological, ecological, and environmental sciences published by nonprofit societies, associations, museums, institutions, and presses.

Your use of this PDF, the BioOne Complete website, and all posted and associated content indicates your acceptance of BioOne's Terms of Use, available at [www.bioone.org/terms-of-use](https://www.bioone.org/terms-of-use).

Usage of BioOne Complete content is strictly limited to personal, educational, and non - commercial use. Commercial inquiries or rights and permissions requests should be directed to the individual publisher as copyright holder.

---

BioOne sees sustainable scholarly publishing as an inherently collaborative enterprise connecting authors, nonprofit publishers, academic institutions, research libraries, and research funders in the common goal of maximizing access to critical research.

# Land Cover Change and Gully Development Between 1965 and 2000 in Umbulo Catchment, Ethiopia

Awdenegegest Moges<sup>1\*</sup> and Nicholas M. Holden<sup>2</sup>

\* Corresponding author: awde\_moges@yahoo.co.uk

<sup>1</sup> Agricultural Engineering and Mechanisation, Hawassa University, PO Box 5, Awassa, Ethiopia

<sup>2</sup> University College Dublin, Belfield, Dublin 4, Ireland

Open access article: please credit the authors and the full source.



Land cover change studies examine the status of land to explain physiographic and socio-economic processes, causes and effects, and environmental implications. The present paper relates land cover change in a food-insecure

catchment to development of gullies, particularly their position in the landscape as well as the history of gully formation. Maps were produced for 1965, 1972, 1986, and 2000 from

aerial photographs and satellite images. The conversion of tree and shrub cover to cultivation was observed pre-1986; the critical period for gully development in the catchment was 1974–1985. Land cover change thus contributed to gully erosion. An integrated recovery policy is required to restore the catchment to useful productivity.

**Keywords:** Land cover change; Normalized Difference Vegetation Index (NDVI); gully erosion; food insecurity; Ethiopia.

**Peer-reviewed:** May 2009 **Accepted:** June 2009

## Introduction

Land cover studies examine change in the status of the land surface in order to understand processes and factors regulating change (Kebrom and Hedlund 2000; Reid et al 2000). The results can be used for management planning (Gete and Hurni 2001). Cover can be assessed qualitatively by visual interpretation or quantitatively using spectral reflectance. Change in cover can result from conversion (change from one cover to another) and modification (additions to or subtractions from vegetation). For example, removing forest leads to conversion to cultivated land, while thinning shrubs causes modification. It is important to understand the processes involved in change and how they influence image elements before assessing change (Lillesand and Kiefer 2000).

Change detection by visual interpretation classifies land cover by eye and relates patterns to known ground features (Rembold et al 2000). Aerial photographs reveal features such as grass, trees, and cultivation, but these features are difficult to detect using satellite data (Rembold et al 2000). Satellite data can be used to derive indices for assessing cover change (Dwivedi et al 2005), erosion and sedimentation (Vrieling 2007), and modeling (Saavedra 2005). The Normalized Difference Vegetation Index (NDVI) has been used for time series analysis of vegetation change (Sobrino and Raissouni 2000).

Land cover is important in Ethiopia because it is a primary factor in the regulation of soil degradation.

Hurni et al (2005) estimated that cultivated and degraded land generates 10–20 times more runoff than do forests; thus, expanding cultivation can drive soil degradation unless the land is well managed (Morgan 1986).

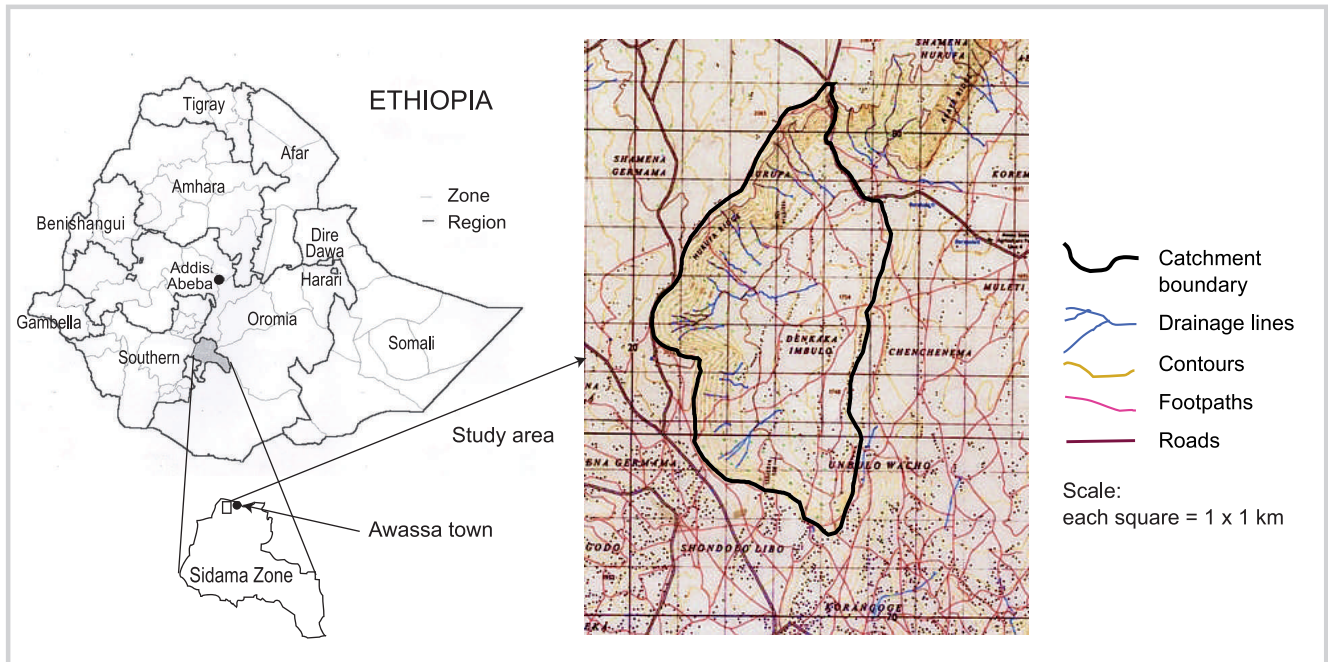
Umbulo catchment, in Sidama Zone, southern Ethiopia (7°01'N, 38°17'E), suffers from soil degradation and is food insecure (Debu University 2003). This area did not always experience this combination of factors, and better understanding of why change has occurred is limited. Moges and Holden (2007) found that farmers were knowledgeable about soil degradation and later determined that there were few inherent soil fertility issues (Moges and Holden 2008a). Reconstruction of gully development (Moges and Holden 2008b) found that gully erosion was triggered between 1974 and 1985; therefore, the objective of this study was to assess the cover change between 1965 and 2000 in Umbulo catchment and relate it to gully development in the landscape and the trend toward food insecurity.

## Material and methods

Umbulo catchment (Figure 1), in the Ethiopian highlands, is 2565 ha in size. The area was once covered with trees and shrubs, but by 2005 this vegetation was virtually nonexistent (Moges and Holden 2007). Crop residues are used for fuel and animal feed, so cultivated land is exposed between harvesting and crop germination.

For this study, the catchment was divided into 3 landscape sections: (1) steep, degraded, upper-slope

FIGURE 1 The study area: Umbulo catchment, southern Ethiopia. (Maps by A. Moges)



uncultivated (708 ha, 11–45% slope); (2) gentle-sloping, middle-slope cultivated (698 ha, 8–11% slope); and (3) flat, lower-slope cultivated (1159 ha, <8% slope), delineated by global positioning system survey and using topographic maps. Screen-digitized outlines were used as masks for NDVI analysis from satellite data and as clip themes for aerial photographs. Land cover was determined from aerial photographs (1965 and 1972) and Landsat Thematic Mapper (TM) images (1986 and 2000) and from data collected during the field visits (Moges and Holden 2007, 2008a, 2008b).

The photographs were scanned at 2000 dots per inch and rectified to a 1:50,000 topographic map (EMA 1979). The catchment boundary was delineated using topographic maps and a stereoscope. Land cover types were identified by pattern, shape, size, texture, tone, association, and site (Lillesand and Kiefer 2000) and were screen digitized as shape polygons. The TM images (resolution 28.5 m) were from Landsat 5 (21 January 1986, path 168, row 55) and Enhance Thematic Mapper-Plus (5 February 2000, path 168, row 55). Using Band 3 (visible 0.63–0.69  $\mu\text{m}$ ) and Band 4 (near-infrared 0.75–0.90  $\mu\text{m}$ ), the images were radiometrically corrected using sensor calibration parameters provided with the satellite images and the formula (Lillesand and Kiefer 2000)

$$L = \frac{L_{\max} - L_{\min}}{255} * DN + L_{\min} \quad (1)$$

where  $L$  is the radiance ( $\text{Wm}^{-2} \text{sr}^{-1}$ ) and  $DN$  is the digital

number, a pixel, and then used to calculate NDVI by

$$NDVI = \frac{\text{Band4} - \text{Band3}}{\text{Band4} + \text{Band3}} \quad (2)$$

NDVI data were analyzed to derive cover classes, which were interpreted by landscape section. Generally, NDVI ranges from  $-1$  to  $+1$ , where higher values reflect higher vegetation cover and lower values represent water, snow, and clouds (Lillesand and Kiefer 2000). TM-derived NDVI data were categorized into 5 land cover classes based on the values from literature and field observations. After land cover was classified by landscape section, change was calculated and maps were prepared. IDRISI and ArcView geographic information systems were used for analysis and preparation of the maps.

## Results and discussion

Seven land cover classes were defined from the aerial photographs:

1. *Woodland*—dark color, continuous texture, mainly in the upper section, boundary to shrubland, and along gullies difficult to differentiate;
2. *Shrubland*—differentiated from woodland by type and canopy cover, more open texture compared to woodland, boundary along gullies difficult to differentiate;
3. *Grassland with shrubs*—dominated by grass but containing shrubs, differentiated by shrubs appearing as

- dispersed dark spots, grass as lighter color, probably formed by modification of shrubland due to thinning;
4. *Grassland*—grazed area not used for cultivation, light color, smooth texture, no patterning compared to croplands and grassland with shrubs;
  5. *Cultivated lands*—land around homesteads, intermixed cover types that cannot be separated, light in color with patterns from plot boundaries;
  6. *Vegetation along drainage lines*—along drainage lines, dark color, trees and shrubs, when adjacent to woodland limited to the width of the drainage line; and
  7. *Degraded land*—bare surfaces with some grass, color similar to grassland, thus location an important distinguishing factor.

At the whole catchment scale, cover change between 1965 and 1972 (Table 1A; Figure 2) showed increased cultivated land (140%), vegetation along drainage lines (5%), grassland (3.4%), and degraded land (6%) at the expense of woodland and shrubland with grass. There was increased cultivation and a decrease in woody cover that represents the start of removal of vegetation cover from land. The 57 ha yr<sup>-1</sup> change within this period was much greater than indicated by contemporary reports from northern Ethiopia (Kebrom and Hedlund 2000). To better understand the changes, the catchment was examined using the 3 landscape sections.

In 1965 the steep, degraded, upper-slope uncultivated category was dominated by degraded land, vegetation along drainage lines, grassland, and woodland (Figure 3; Table 1B). Removal of woodland and conversion into shrubland and degraded land occurred by 1972. These changes probably meant that this section started to generate larger amounts of runoff that drained to the lower sections of the catchment. In the gentle-sloping, middle-slope category (Figure 3; Table 1C), woodland and shrubland decreased by 1972. The change in cultivated land from 11 ha to 102 ha (11 ha yr<sup>-1</sup>), at the expense of woodland and shrubland, meant less protection of the land from erosive rains by 1972. In the flat, lower-slope category (Figure 3; Table 1D), woodland and shrubland decreased and grassland with shrubs was completely removed. These cover types converted to cultivated land at a rate of 45 ha yr<sup>-1</sup>. These changes probably decreased the capacity of the land to absorb runoff and allowed rapid flow to the catchment outlet. This is the most likely reason for the formation of a lake, in the late 1980s, near the catchment outflow. A lack of year-round vegetation cover made this section more prone to erosion.

The NDVI ranged from -0.096 to 0.562 in 1986 and from -0.163 to 0.453 in 2000 and was used to define 5 cover classes. Values for a small lake at the catchment outlet were taken to represent water ( $\leq -0.07$ ), and values between  $> -0.07$  and  $\leq 0.10$  were interpreted as rock and bare soil (Holben 1986). Mixed bare soil and vegetation

( $>0.1$  and  $\leq 0.16$ , respectively) were determined using the location of remnant-dispersed trees in the catchment. All NDVI values  $>0.16$  were classified as vegetation (Sobrino and Raissouni 2000), where  $>0.16$  and  $\leq 0.45$  was classified as full vegetation and  $>0.45$  was classified as high vegetation to account for greater values recorded in 1986 compared to the 2000 maximum value.

At the whole catchment scale, 100% of the lake area was gained and 100% of high vegetation was lost between 1986 and 2000 (Figure 2; Table 2A), and field observations in 2005 confirmed the lake had disappeared. Rock and bare soil as well as mix of soil and vegetation showed very small changes, while full vegetation cover decreased at a rate of  $<2$  ha yr<sup>-1</sup>. The steep, degraded, upper-slope section was dominated by the rock and bare soil cover type, which increased by about 5% between 1986 and 2000. The mix of soil and vegetation class and full vegetation class both decreased (Figure 4, Table 2B). The trend of removal of vegetation identified from the aerial photography did not continue to 2000, but was not reversed, either. There was a marked reduction of vegetation cover in the northern parts of the catchment (Figure 4).

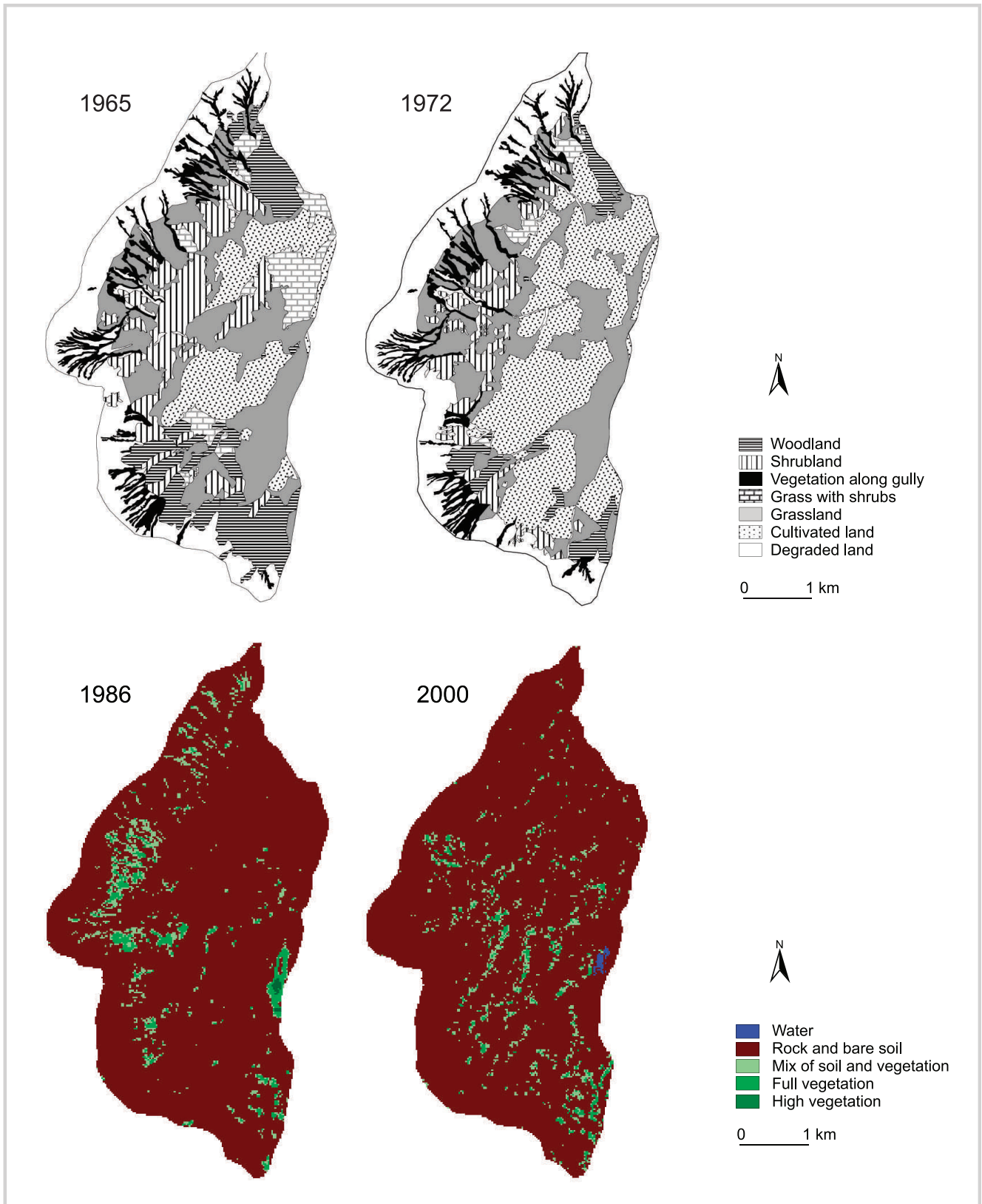
An increase in rock and bare soil in the gentle-sloping, middle-slope category (Table 2C) occurred, but NDVI probably represented fields after harvest, and little evidence of widespread soil degradation over this landscape section was found. Most activity was probably confined to the gullies that run across this section (Moges and Holden 2008a). The mix of soil and vegetation class and full vegetation class decreased but represented only 4% of the section area. These mixtures are found in the middle of the catchment (Figure 4), and their placement there could have accelerated soil degradation, as they were serving as a buffer between the steep, degraded, upper-slope and flat, lower-slope sections. On the flat, lower slope, water appeared to have started occupying an area of  $>5$  ha (Table 2D). It was reported that a lake emerged late in the 1980s and disappeared around 2002 (Moges and Holden 2008a). The lake (2000) replaced high vegetation (1986) at its location. This occurred because standing water previously accumulated during the rainy season, but the amount of water that remained after the rainy season (June to October) was only sufficient to support vigorous vegetation growth during the dry period (when the satellite image was taken in 1986). As more vegetation was stripped from the upper catchment area, less water was retained and more runoff collected near the outflow, which can persist as a lake through the dry season (seen in 2000).

A direct comparison between 1965/1972 and 1986/2000 cover classes was not possible, so a reclassification was used, as follows: (1) vegetation dominated, characterized by NDVI-derived high vegetation; full vegetation and mix of bare soil and vegetation cover classes; and photograph-derived woodland, shrubland,

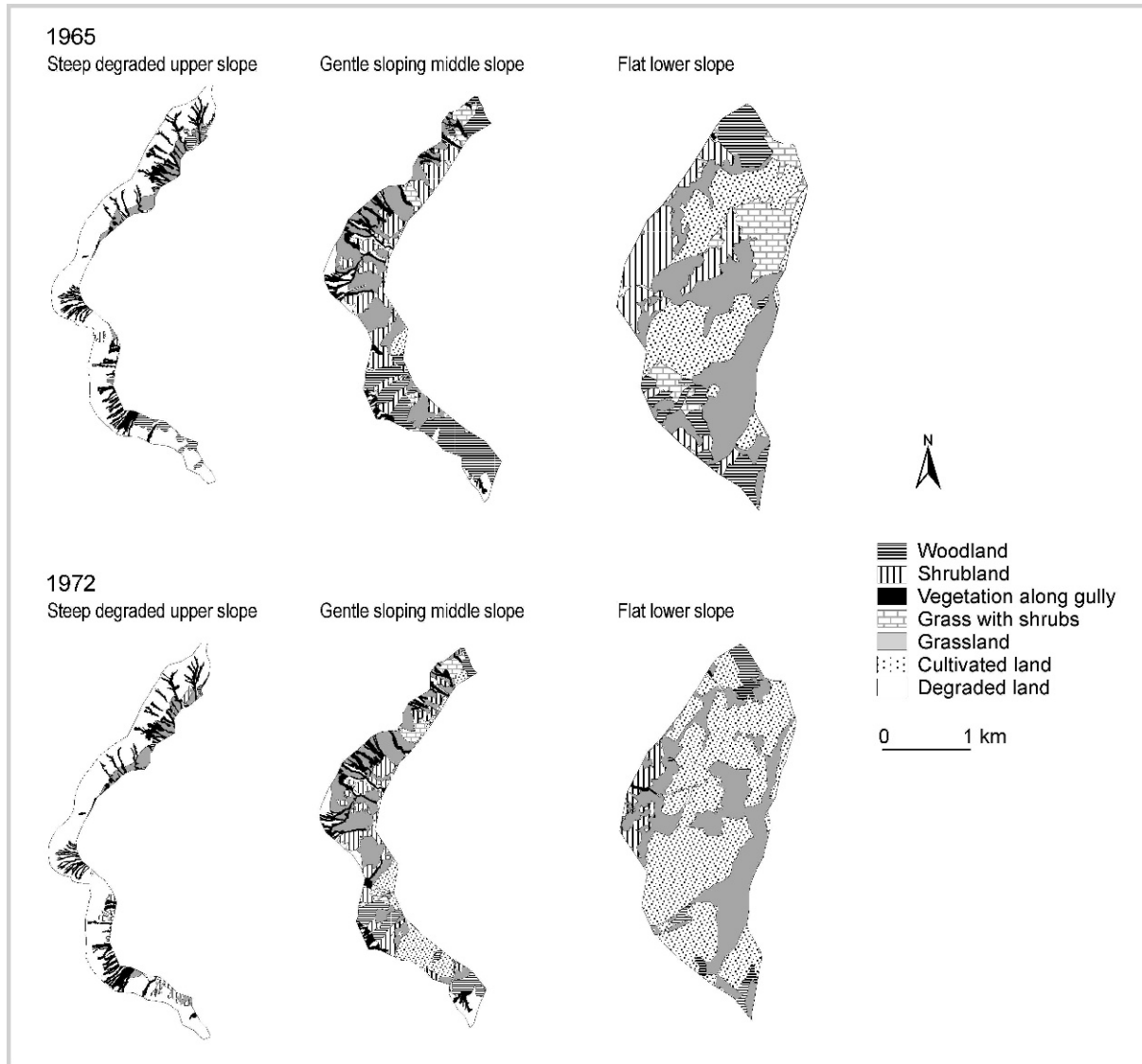
**TABLE 1** Land cover changes between 1965 and 1972 in the whole catchment (A) and in the 3 landscape sections (B–D).

Land cover type	1965		1972		Change	
					1965–1972	
	ha	%	ha	%	ha	%
<b>A. Whole catchment</b>						
Woodland	347	13	122	5	–225	–65
Shrubland	356	14	201	8	–156	–44
Vegetation along drainage lines	192	7	202	8	10	5
Grassland with shrubs	173	7	37	1	–136	–79
Grassland	610	24	631	25	21	3
Cultivated land	331	13	784	30	453	137
Degraded land	555	22	589	23	33	6
<b>Total</b>	<b>2564</b>	<b>100</b>	<b>2566</b>	<b>100</b>		
<b>B. Steep, degraded, upper-slope section</b>						
Woodland	40	6	3	0	–37	–92
Shrubland	7	1	25	3	17	240
Vegetation along drainage lines	118	17	112	16	–6	–5
Grassland with shrubs	1	0	1	0	0	8
Grassland	50	7	52	7	2	5
Cultivated land	0	0	5	1	5	—
Degraded land	492	69	510	72	18	4
<b>Total</b>	<b>708</b>	<b>100</b>	<b>708</b>	<b>100</b>		
<b>C. Gentle-sloping, middle-slope section</b>						
Woodland	172	25	67	10	–105	–61
Shrubland	160	23	125	18	–35	–22
Vegetation along drainage lines	73	11	87	13	14	19
Grassland with shrubs	31	4	35	5	4	13
Grassland	189	27	210	30	21	11
Cultivated land	11	2	102	15	91	823
Degraded land	61	9	71	10	10	17
<b>Total</b>	<b>698</b>	<b>100</b>	<b>698</b>	<b>100</b>		
<b>D. Flat, lower-slope section</b>						
Woodland	135	12	51	4	–84	–62
Shrubland	189	16	51	4	–138	–73
Vegetation along drainage lines	1	0	3	0	3	430
Grassland with shrubs	141	12	0	0	–141	–100
Grassland	371	32	368	32	–3	–1
Cultivated land	320	28	678	58	357	112
Degraded land	3	0	8	1	5	169
<b>Total</b>	<b>1160</b>	<b>100</b>	<b>1160</b>	<b>100</b>		

**FIGURE 2** Land cover changes between 1965 and 2000 in Umbulo catchment, southern Ethiopia. (Maps by A. Moges)



**FIGURE 3** Land cover changes between 1965 and 1972 at landscape level in Umbulo catchment, southern Ethiopia. (Maps by A. Moges)



vegetation along gullies, grassland with shrubs, and grassland classes and (2) exposed-soil dominated, characterized by NDVI-derived rock and bare soil and photograph-derived cultivated land and degraded land classes. All of these cover classes imply that the protection provided to the soil is poor, surface runoff will face little impediment, and the soil is exposed with the onset of rain. Analysis by three landscape sections is presented in Table 3.

On the steep, degraded, upper-slope section, vegetation-dominated land cover decreased from 31% to 1% by 2000. This can be attributed to increases in cultivation and demand for fuelwood and construction

materials associated with population growth. As there was no cultivation in this part of the catchment, the difference represents permanent vegetation loss. Moges and Holden (2007) reported that farmers in the catchment were knowledgeable about the causes of soil degradation and preventative methods, but these data indicate no successful rehabilitation of the area (the primary source of runoff water), either through tree plantation or natural regeneration. Vegetation-dominated cover on the gentle-sloping, middle-slope section decreased from 90% to 8% by 2000. This loss of vegetation cover was crucial to the catchment erosion processes because the lower was previously protected

**TABLE 2** Land cover changes between 1986 and 2000 in the whole catchment (A) and in the 3 landscape sections (B–D).

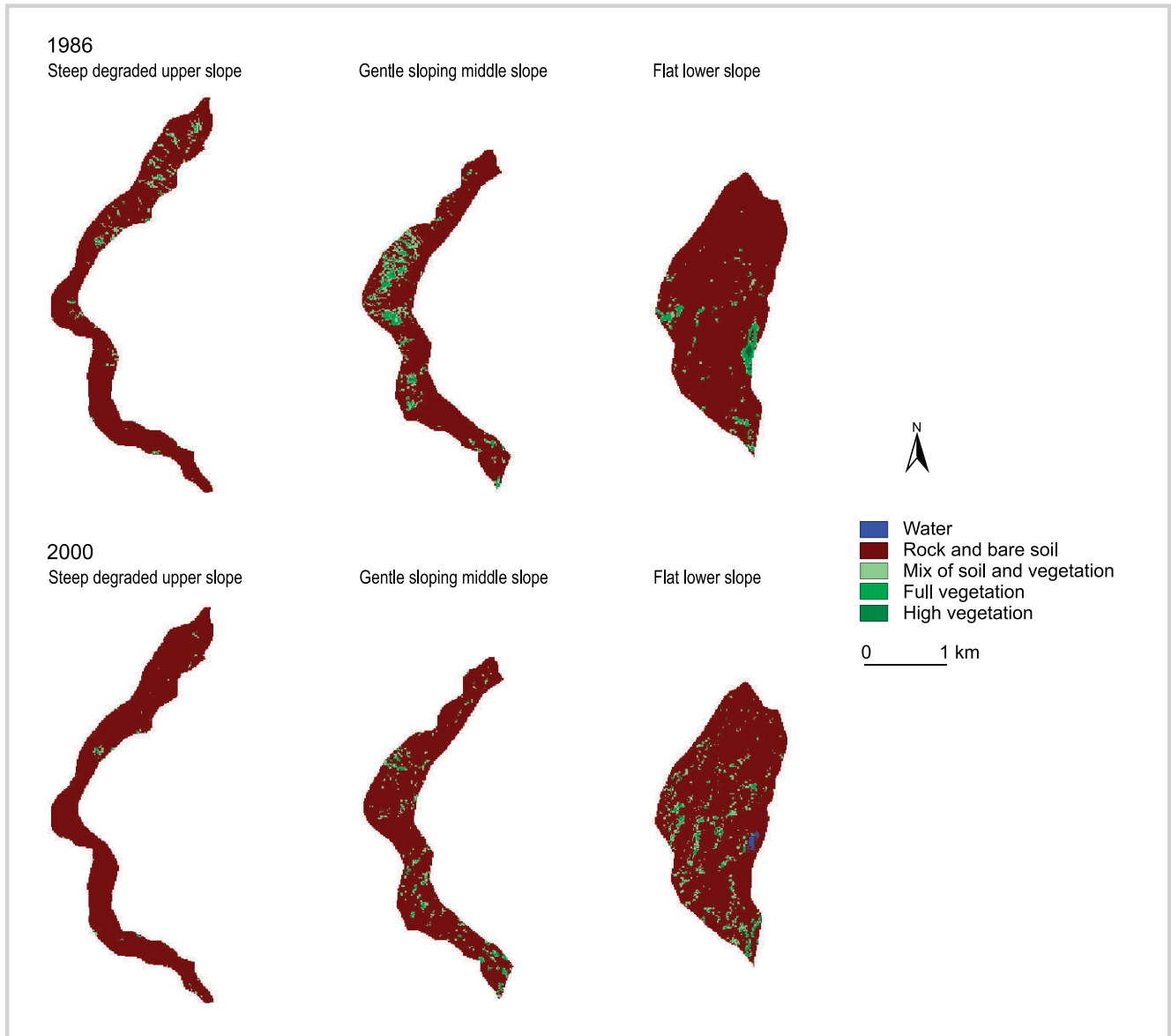
Land cover type	1986		2000		Change	
					1986–2000	
	ha	%	ha	%	ha	%
<b>A. Whole catchment</b>						
Water	0	0	5	0	5	100
Rock and bare soil	2359	92	2383	93	25	1
Mix of soil and vegetation	130	5	125	5	–5	–4
Vegetation	73	3	52	2	–21	–29
High vegetation	4	0	0	0	–4	–100
<b>Total</b>	<b>2565</b>	<b>100</b>	<b>2565</b>	<b>100</b>		
<b>B. Steep, degraded, upper-slope section</b>						
Water	0	0	0	0	0	—
Rock and bare soil	665	94	697	99	32	5
Mix of soil and vegetation	36	5	7	1	–29	–80
Vegetation	6	1	2	0	–4	–61
High vegetation	0	0	0	0	0	—
<b>Total</b>	<b>707</b>	<b>100</b>	<b>707</b>	<b>100</b>		
<b>C. Gentle-sloping, middle-slope section</b>						
Water	0	0	0	0	0	—
Rock and bare soil	601	86	644	92	43	7
Mix of soil and vegetation	66	9	38	5	–28	–42
Vegetation	33	5	18	3	–15	–46
High vegetation	0	0	0	0	0	—
<b>Total</b>	<b>700</b>	<b>100</b>	<b>700</b>	<b>100</b>		
<b>D. Flat, lower-slope section</b>						
Water	0	0	5	0	5	100
Rock and bare soil	1093	94	1042	90	–51	–5
Mix of soil and vegetation	28	2	80	7	51	181
Vegetation	34	3	32	3	–2	–7
High vegetation	4	0	0	0	–4	100
<b>Total</b>	<b>1159</b>	<b>100</b>	<b>1159</b>	<b>100</b>		

from runoff generated on the steep, degraded, upper-slope section. Runoff that was once dispersed and utilized by vegetation was channeled to the lower areas of the catchment. Thus, it was probably this loss of vegetation that caused rapid development of the gullies

described by Moges and Holden (2008a). The flat, lower slope had fluctuating vegetation cover. In 1965, vegetation cover accounted for 72% of land cover. This decreased to 6% in 1986, but by 2000 it was 10%.



**FIGURE 4** Land cover changes between 1986 and 2000 at landscape level in Umbulo catchment, southern Ethiopia. (Maps by A. Moges)



The recent increase can perhaps be explained by production of *enset* as a garden crop, which is a food security measure, as the crop is resilient in drought conditions. It was confirmed during group discussion (Moges and Holden 2008b) that *enset* was recently introduced to the area. The increase in exposed, soil-dominated land cover can be attributed to expansion of cultivation. The emergence of a lake as well as deposition of low-nutrient erosion sediments (Moges and Holden

2008a) in this section resulted from vegetation changes in the upper catchment sections.

Gete and Hurni (2001) suggest that land cover change studies should consider topography to gain better insight into the process and possible remedial measures. The landscape sectioning approach used in this study, which considered both land use and function, has proved a useful method for understanding change that would not have emerged at the whole catchment scale. Interesting

**TABLE 3** Land cover changes between 1965 and 2000 in the whole catchment (A) and in the 3 landscape sections (B–D).

Land cover type	1965		1972		1986		2000	
	ha	%	ha	%	ha	%	ha	%
<b>A. Whole catchment</b>								
Vegetation dominated	1678	65	1192	46	207	8	177	7
Soil exposed	887	35	1374	54	2358	92	2389	93
Total <sup>a)</sup>	2566	100	2566	100	2565	100	2565	100
<b>B. Steep, degraded, upper-slope section</b>								
Vegetation dominated	216	31	193	25	42	6	9	1
Soil exposed	492	69	567	75	665	94	697	99
Total <sup>a)</sup>	708	100	761	100	707	100	707	100
<b>C. Gentle-sloping, middle-slope section</b>								
Vegetation dominated	626	90	525	75	99	14	56	8
Soil exposed	72	10	173	25	601	86	644	92
Total <sup>a)</sup>	698	100	698	100	700	100	700	100
<b>D. Flat, lower-slope section</b>								
Vegetation dominated	836	72	474	41	66	6	111	10
Soil exposed	323	28	685	59	1093	94	1047	90
Total <sup>a)</sup>	1159	100	1159	100	1159	100	1159	100

<sup>a)</sup> The small difference in area calculated by aerial photograph and the satellite image arose because analysis of aerial photographs used vector methods and satellite images used raster methods.

questions arise from the identified cover change: (1) How does this relate to changes elsewhere in the region? (2) Can the gully erosion identified in the catchment (Moges and Holden 2008a) be related to the cover change? (3) Do stakeholders recognize the implications of the cumulative evidence of soil degradation (gully erosion, fertility change, land cover change)?

The general trend of land cover change in Ethiopia is an increase in cultivated land at the expense of woodland and grassland areas (Kebrom and Hedlund 2000; Gete and Hurni 2001). At the national scale, forest decreased from 16% in 1950 to 2.7% by the early 1990s (Million 2001). Similar findings (with some exceptions: Woldeamlak 2002; Solomon 2005) are reported with respect to expansion of cultivation and reduction of forest and grazing lands elsewhere (Table 4). These data, and the data presented here, reveal a critical period of high rate of conversion of land cover to cultivation prior to the 1980s that may have occurred for two reasons: (1) expansion of land area under cultivation by subsistence farming to meet the demands of population change due to growth or

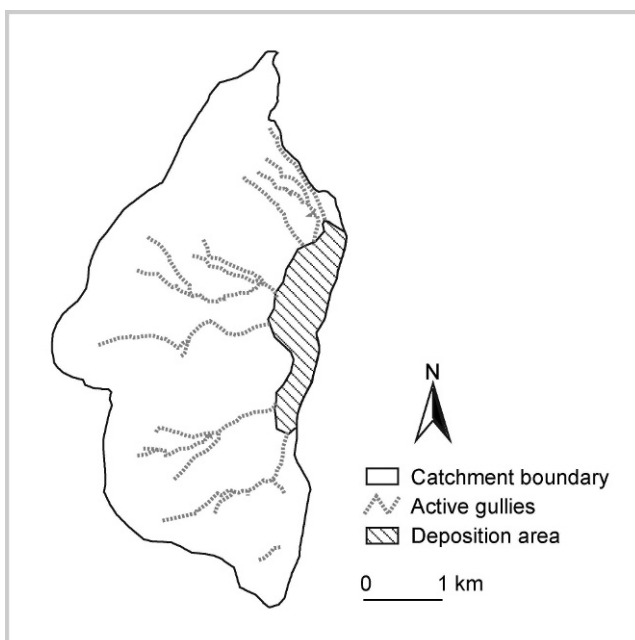
migration (Reid et al 2000; Woldeamlak 2002) and (2) change in policies that included land tenure and settlement rights (Reid et al 2000). A change in government in 1974 saw nationalization of land and a redistribution of land to the poor, which also increased cultivated land area.

The major erosion type threatening agricultural production in Umbulo catchment is large-scale gullying, shown in Figures 5 and 6 (Moges and Holden 2007, 2008a). Gully development is believed to spread from upslope to downslope, and the rate of soil loss has been estimated to range from 11 to 30 t ha<sup>-1</sup> yr<sup>-1</sup> (Moges and Holden 2008a). Moreover, the critical period of gully development was between 1974 and 1985. Gullies were limited to the upper cultivated area during and before 1974, and most of the gullies extended to the middle and lower sections of the catchment by the late 1980s. The development of gullies corresponds to the pattern of removal of the trees and shrubs identified in the catchment. The earlier discussion suggests probable mechanisms for this process.

**TABLE 4** Expansion of cultivated area in northern Ethiopia according to earlier studies.

Period considered	Rate of conversion (ha/yr)	Area covered (ha), end of period	Rate of change (%)	Study area (ha)	Location	Source
1957–1982	143	7150	24	15,362	Gojam, northwestern Ethiopia	Solomon (2005)
1982–2001	-130	4683	-16			
1957–1982	109	24,832	13	36,400	Gojam, northwestern Ethiopia	Woldeamlak (2002)
1982–1998	-37	24,246	-2			
1957–1982	321	19,031	78	27,103	Gojam, northwestern Ethiopia	Gete and Hurni (2001)
1982–1995	143	20,893	10			
1957–1986	2	1064	7	1528	Wello, North Ethiopia	Belay (2002)
1986–2000	1	1079	1			
1958–1986	5	5600	2	11,000	Wello, North Ethiopia	Kebrom and Hedlund (2000)

Pressure on the land, lack of water retention, and removal of vegetation in the upper catchment have contributed to frequent crop failure and low productivity, leading to food insecurity. Sufficient action has not been taken by stakeholders, as seen from the dwindling productivity in the catchment. The

**FIGURE 5** The present active gully network (2006) draining to the outlet at the depositional area. (Map by authors)

knowledge and understanding of farmers about the problem and remedial measures (Moges and Holden 2007) can lead nowhere without integrated action by other stakeholders. The nature of gully erosion makes remedial action by individual farmers difficult (Moges and Holden 2008a) and emphasizes the need for attention from regional and national authorities. Monitoring of vegetation change offers a means of assessing the impact of remedial measures in the catchment once a suitable management policy has been developed.

## Conclusions

The methodology, which combined different data sources to reconstruct a record of land cover change analyzed by landscape section, should be applicable globally. To understand changes, the catchment had to be split into landscape sections that reflect land use (in this case, mainly farming), topography, and hydraulic function (runoff generation, erosion, and deposition). Evaluation at the whole catchment scale was inappropriate for understanding the link between cover change and soil degradation. Knowledge of the site through field visits was essential for interpretation of both aerial photography and satellite data. Future integration of spatially organized physical and socioeconomic data should improve analysis of cover change data.

Over 35 years, cover change in Umbulo catchment was consistent with observations elsewhere in Ethiopia and Africa, with a trend toward clearing of erosion-resisting vegetation and its replacement by erosive cultivated land.

**FIGURE 6** Typical gully in the gentle-sloping, middle-slope section of the catchment. (Photo by A. Moges)



The methodology enabled a better understanding of how vegetation change influenced gully development. With vegetation cover acting as soil protection (as of 1965), gullies were confined to the badlands, but once removed (between 1972 and 1986), gullies developed over the full catchment area. The farming community and authorities

have directly contributed to soil degradation, and rehabilitation will require management of both soil degradation (fertility and erosion issues) and pressure on the land (population pressure, demand for resources). An integrated recovery policy will be required to restore the catchment to useful productivity.

## ACKNOWLEDGMENTS

This research was funded by Hawassa University, Ethiopia, and Irish Aid. We are very grateful to Dr John Connolly, Dr Susan Hegarty, and Mr Sean Morrish of

University College Dublin for their assistance. The comments of 2 anonymous reviewers are gratefully acknowledged.

## REFERENCES

- Belay T.** 2002. Land-cover/land-use changes in the Derekolli catchment of the South Wello zone of Amhara region, Ethiopia. *East African Social Science Research Review* 18(1):1–20.
- Dehub University.** 2003. *A Report on PRA of Umbulo-Wacho Peasant Association. Operational Research and Capacity Building for Food Security and Sustainable Livelihoods* (draft document). Available from Dehub University, Awassa, Ethiopia.
- Dwivedi RS, Sreenivas K, Ramana KV.** 2005. Land-use/land-cover change analysis in part of Ethiopia using Landsat Thematic Mapper data. *International Journal of Remote Sensing* 26(7):1285–1287.
- EMA [Ethiopian Mapping Authority].** 1979. Map, series ETH 4, sheets 0638 A2 and 0738 C4, edition 1. Addis Ababa, Ethiopia: EMA.
- Gete Z, Hurni H.** 2001. Implications of land use and land cover dynamics for mountain resource degradation in the northwestern Ethiopian highlands. *Mountain Research and Development* 21(2):184–191.
- Holben BN.** 1986. Characteristics of maximum-value composite images from temporal AVHRR data. *International Journal of Remote Sensing* 7(11):1417–1434.
- Hurni H, Kebede T, Gete Z.** 2005. The implications of changes in population, land use, and land management for surface runoff in the upper Nile basin area of Ethiopia. *Mountain Research and Development* 25(2):147–154.
- Kebrom T, Hedlund L.** 2000. Land cover changes between 1958 and 1986 in Kalu district, southern Wello, Ethiopia. *Mountain Research and Development* 20(1):42–51.
- Lillesand TM, Kiefer RW.** 2000. *Remote Sensing and Image Interpretation*. 4th edition. New York, NY: Wiley.

- Million B.** 2001. *Country Report: Ethiopia*. Forestry Outlook Studies in Africa (FOSA)/WP/26. Corporate document repository. Rome, Italy: Food and Agriculture Organization of the United Nations.
- Moges A, Holden NM.** 2007. Farmers' perception of soil erosion and fertility loss in southern Ethiopia. *Land Degradation and Development* 18: 543–554.
- Moges A, Holden NM.** 2008a. Estimating the rate and consequences of gully development, a case study of Umbulo catchment in southern Ethiopia. *Land Degradation and Development* 19:574–586.
- Moges A, Holden NM.** 2008b. Soil fertility in relation to slope position and agricultural land use, a case study of Umbulo catchment in southern Ethiopia. *Environmental Management* 42:753–763.
- Morgan RPC.** 1986. *Soil Erosion and Conservation*. 2nd edition. Harlow, United Kingdom: Longman.
- Reid RS, Kruska RL, Muthui N, Andualem T, Wotton S, Wilson CJ, Woudyalew M.** 2000. Land-use and land-cover dynamics in response to changes in climatic, biological and socio-political forces: The case of south-western Ethiopia. *Landscape Ecology* 15:339–355.
- Rembold F, Carnicelli S, Nori M, Ferrari GA.** 2000. Use of aerial photographs, Landsat TM imagery and multidisciplinary field survey for land-cover change analysis in the lake region (Ethiopia). *International Journal of Applied Earth Observation and Geoinformation* 2(3/4):181–189.
- Saavedra C.** 2005. *Estimating Spatial Patterns of Soil Erosion and Deposition in the Andean Region Using Geo-information Techniques: A Case Study in Cochabamba, Bolivia* [PhD thesis]. Wageningen, The Netherlands: Wageningen University.
- Sobrino JA, Raissouni N.** 2000. Toward remote sensing methods for land cover dynamic monitoring: Application to Morocco. *International Journal of Remote Sensing* 21(2):353–366.
- Solomon A.** 2005. *Land Use and Land Cover Changes in the Head Stream of Abbay Watershed, Blue Nile Basin, Ethiopia* [MSc thesis]. Addis Ababa, Ethiopia: Addis Ababa University.
- Vrieling A.** 2007. *Mapping Erosion From Space* [PhD thesis]. Wageningen, The Netherlands: Wageningen University.
- Woldeamlak B.** 2002. Land cover dynamics since the 1950s in Chemoga watershed, Blue Nile basin, Ethiopia. *Mountain Research and Development* 22(3):263–269.