



## **Phylogenetic Relationships among East Asian Species of Crocidura (Mammalia, Insectivora) Inferred from Mitochondrial Cytochrome b Gene Sequences**

Authors: Motokawa, Masaharu, Suzuki, Hitoshi, Harada, Masashi, Lin, Liang-Kong, Koyasu, Kazuhiro, et al.

Source: Zoological Science, 17(4) : 497-504

Published By: Zoological Society of Japan

URL: [https://doi.org/10.2108/0289-0003\(2000\)17\[497:PRAEAS\]2.0.CO;2](https://doi.org/10.2108/0289-0003(2000)17[497:PRAEAS]2.0.CO;2)

---

BioOne Complete ([complete.BioOne.org](https://complete.BioOne.org)) is a full-text database of 200 subscribed and open-access titles in the biological, ecological, and environmental sciences published by nonprofit societies, associations, museums, institutions, and presses.

Your use of this PDF, the BioOne Complete website, and all posted and associated content indicates your acceptance of BioOne's Terms of Use, available at [www.bioone.org/terms-of-use](https://www.bioone.org/terms-of-use).

Usage of BioOne Complete content is strictly limited to personal, educational, and non - commercial use. Commercial inquiries or rights and permissions requests should be directed to the individual publisher as copyright holder.

---

BioOne sees sustainable scholarly publishing as an inherently collaborative enterprise connecting authors, nonprofit publishers, academic institutions, research libraries, and research funders in the common goal of maximizing access to critical research.

# Phylogenetic Relationships among East Asian Species of *Crocidura* (Mammalia, Insectivora) Inferred from Mitochondrial Cytochrome *b* Gene Sequences

Masaharu Motokawa<sup>1\*</sup>, Hitoshi Suzuki<sup>2</sup>, Masashi Harada<sup>3</sup>, Liang-Kong Lin<sup>4</sup>,  
Kazuhiro Koyasu<sup>5</sup> and Sen-ichi Oda<sup>6</sup>

<sup>1</sup>The Kyoto University Museum, Kyoto 606-8501, Japan

<sup>2</sup>Division of Bioscience, Graduate School of Environmental Earth Science, Hokkaido University, Sapporo 060-0810, Japan

<sup>3</sup>Laboratory Animal Center, Osaka City University Medical School, Osaka 545-8585, Japan

<sup>4</sup>Laboratory of Wildlife Ecology, Department of Biology, Tunghai University, Taichung, Taiwan 407, Republic of China

<sup>5</sup>The Second Department of Anatomy, School of Dentistry, Aichi-Gakuin University, Nagoya 464-8650, Japan

<sup>6</sup>Laboratory of Animal Management, School of Agricultural Sciences, Nagoya University, Nagoya 464-8601, Japan

---

**ABSTRACT**—Phylogenetic relationships among the East Asian species of the genus *Crocidura* (Mammalia, Insectivora, Soricidae) were inferred from the partial sequences (402 base pairs) of the mitochondrial cytochrome *b* gene. Six species of *Crocidura* and one representative of another insectivoran genus *Suncus* were examined. In the neighbor joining tree, four distinct lineages were recognized: *C. lasiura* from northeastern China and Korea, and *C. dsinezumi* from the main-islands of Japan; *C. attenuata* from Taiwan; *C. watasei* from the Amami and Okinawa Groups, and *S. murinus* from the Miyako Group; and *C. suaveolens* from Tsushima and Taiwan, and *C. sibirica* from Central Asia in Russian territory. All these lineages excluding *C. lasiura* and *C. dsinezumi* were also recognized by the maximum parsimony analysis. Clustering of *C. watasei* with *S. murinus* suggested the non-monophyly of the genus *Crocidura* as of the present definition. Biogeographical implications of the present results were also discussed.

---

## INTRODUCTION

*Crocidura* is the largest mammalian genus consisting of no less than 164 species of small terrestrial shrews widely distributed in the Palaearctic, Ethiopian and Oriental regions (Hutterer, 1993; Wolsan and Hutterer, 1998). The taxonomic arrangement of this genus is still problematic, because several authors studying morphological and genetic properties of its African components casted a doubt to the monophyly of the genus as in relation to other closely related genera, *Suncus* and *Sylvisorex* (Butler *et al.*, 1989; Maddalena, 1990; McLellan, 1994). The non-monophyly as in relation to *Suncus* is also suspected for the Asian *Crocidura* species (Corbet and Hill, 1992), but without concrete evidence.

During the last decade, a number of systematic studies

for the Asian *Crocidura* have been performed based on morphological, karyological, and genetic data (Ruedi *et al.*, 1990, 1993, 1998; Heaney and Ruedi, 1994; Kitchener *et al.*, 1994; Ruedi, 1995, 1996; Ruedi and Vogel, 1995; Jenkins and Smith, 1995; Motokawa *et al.*, 1996, 1997; Fang *et al.*, 1997; Motokawa, 1998; Motokawa and Harada, 1998), leading to drastic taxonomic changes from the previous arrangement (Ellerman and Morrison-Scott, 1951; Jenkins, 1976; Lekagul and McNeely, 1977; Jameson and Jones, 1977). In those recent studies, however, the phylogenetic relationships have been assessed only for the Southeast Asian species (Ruedi, 1996; Ruedi *et al.*, 1998): no studies have been made for the comprehensive phylogeny of the East Asian species.

East Asia, consisting of a number of fairly old landbridge islands and the adjacent continent that range in both Palaearctic and Oriental faunal realms, is one of the most important regions to study mammal evolution. Such historical and biogeographical situations have let this region embrace a diverse, highly endemic mammal fauna (Abe *et al.*, 1994;

---

\* Corresponding author: Tel. +81-75-753-3285;  
FAX. +81-75-753-3276.  
E-mail. motokawa@inet.museum.kyoto-u.ac.jp

Motokawa, 1999; Lin and Lin, 1983). It is generally considered that the ancestors of the East Asian mammal lineages were originally dispersed from areas of both north and south of this region (Abe *et al.*, 1994; Zhang *et al.*, 1997), but the geographical origin of each lineage remains controversial.

In East Asia, seven species are currently recognized for the genus *Crociodura*: *C. lasiura* in the northeastern part of the Asian continent including Korean Peninsula; *C. suaveolens* in eastern continent including Korean Peninsula, Tsushima, and Taiwan; *C. dsinezumi* in the main-islands of Japan; *C. orii* in the Amami Group of the central Ryukyus; *C. watasei* in the Amami Group and the Okinawa Group of the central Ryukyus; *C. attenuata* in southeastern continent and Taiwan; and *C. kurodai* in Taiwan (Corbet, 1978; Corbet and Hill, 1992; Abe *et al.*, 1994; Motokawa *et al.*, 1996, 1997; Fang *et al.*, 1997; Zhang *et al.*, 1997; Motokawa, 1998). Of these, *C. suaveolens* is distributed almost throughout the Palaearctic Eurasian continent, whereas *C. attenuata* occurs in the region from Taiwan to Malay Peninsula (Corbet, 1978; Corbet and Hill, 1992; Fang *et al.*, 1997; Zhang *et al.*, 1997). The remaining five species are endemic to East Asia.

In the present study, a part of the mitochondrial cytochrome *b* gene was sequenced for five of the East Asian *Crociodura* species, *C. sibirica* from Central Asia and *Suncus murinus* from East Asia, and resultant data were analysed phylogenetically. Our purposes are to hypothesize the phylogenetic relationships among them and to test the monophyly of the genus *Crociodura*.

## MATERIALS AND METHODS

We used 20 specimens of six *Crociodura* species and *Suncus murinus* (Table 1, Fig. 1, Appendix). Akademgorodok City in Russia, from which two specimens of *C. sibirica* were obtained (not plotted in Fig. 1), is located around 54°40' N in latitude and 83°05' E in longitude (Narita *et al.*, 1995). A specimen of *S. murinus* was from a closed colony, which had been originated from wild caught animals on Taramajima of the Miyako Group, the southern Ryukyus (Oda, 1985).

**Table 1.** Specimens of *Crociodura* and *Suncus* examined in the present study. Locality numbers given in brackets correspond to those in Fig. 1. Details of localities and voucher specimens are given in Appendix.

Species	Locality	Number of specimens examined
<i>C. dsinezumi</i>	Toyama [1]	1
	Gifu [2]	1
	Chiburijima [3]	1
	Yakushima [5]	2
<i>C. lasiura</i>	China [12]	1
	Korea [11]	1
<i>C. attenuata</i>	Taichung [9]	1
	Pingtung [10]	2
<i>C. watasei</i>	Amamioshima [6]	1
	Okinawajima [7]	2
<i>C. suaveolens</i>	Tsushima [4]	1
	Taichung [9]	3
<i>C. sibirica</i>	Russia	2
<i>S. murinus</i>	Taramajima [8]	1

Specific names follow Wolsan and Hutterer (1998). The voucher specimens are deposited in the Zoological Department of Kyoto University (KUZ), Osaka City University Medical School (OCUMS), and School of Dentistry of Aichi-Gakuin University (AGUD). The sequence data of *Soriculus caudatus*, a member of a subfamily (Soricinae) different from that for the genera *Crociodura* and *Suncus* (Crociodurinae: Hutterer, 1993), was taken from Ohdachi *et al.* (1997) and was incorporated into the phylogenetic analyses as outgroup.

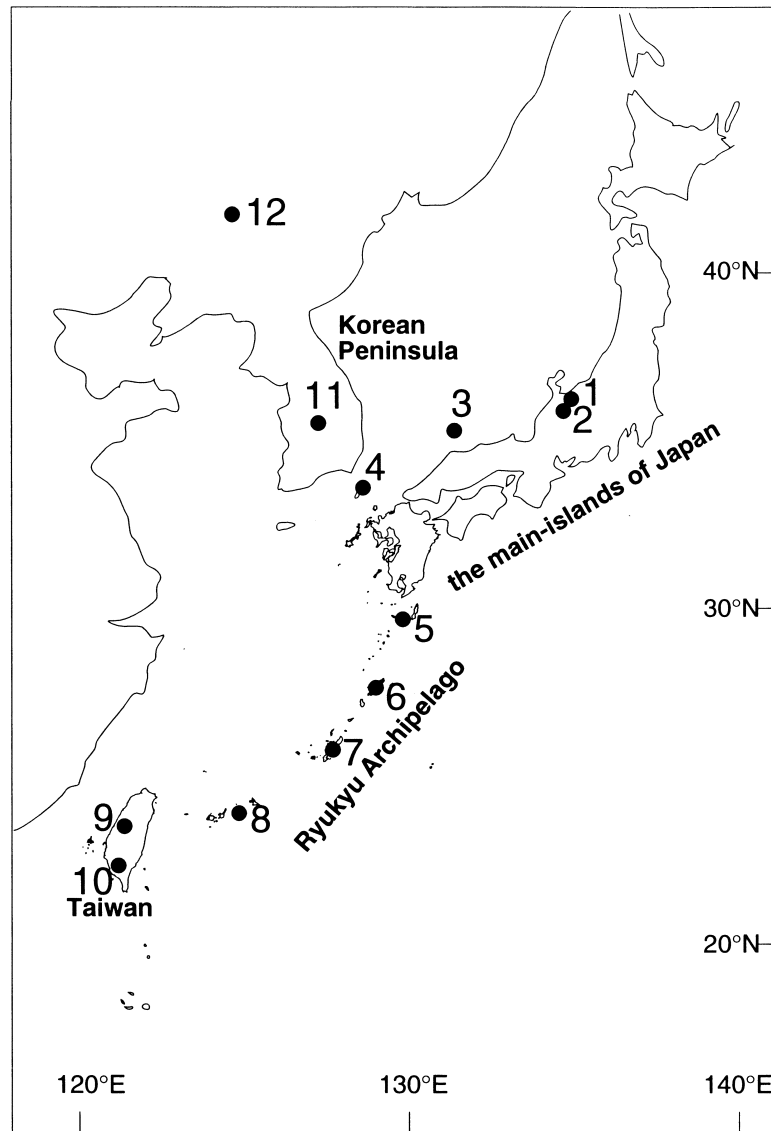
Liver samples were removed and stored at -80°C or in 95% ethanol until experiments. The DNA was extracted using the phenol-chloroform method described by Sambrook *et al.* (1989). A 402 base-pair fragment of the mitochondrial cytochrome *b* gene was analysed by using the semi-nested polymerase chain reactions (PCR) and direct sequencing method by Suzuki *et al.* (1997). The primers used for the first PCR (L14724 and H15915) and the second PCR (R-L14724 and U-H15155) are the same as those in Suzuki *et al.* (1997). Numbers refer to the positions of 3' base of the primers in the complete sequence of human mitochondrial DNA (Anderson *et al.*, 1981).

Phylogenetic relationships were inferred by two methods: the neighbor joining method (Saitou and Nei, 1987) using PHYLIP program version 3.5c (Felsenstein, 1993) on the basis of pairwise distances calculated following the two-parameter model of Kimura (1980); and the maximum parsimony method using the branch-and-bound search in PAUP (Phylogenetic Analysis Using Parsimony Version 3.1.1, Swofford, 1993) with all character state changes weighted equally. In both analyses, 1000 bootstrap replications (Felsenstein, 1985) were made to assess the degree of supports for internal branches.

## RESULTS

Nucleotide sequence data of 402 base-pairs of the cytochrome *b* gene are given in Fig. 2. Fourteen haplotypes were observed from the 20 specimens. Of the 402 base-pairs sequenced, 123 sites (30.6%) were variable among 15 haplotypes including the outgroup. Percentage similarities are shown in Table 2. Two haplotypes, differing from each other in one nucleotide site (99.8% similarity), were found in three specimens of *C. suaveolens* from Taichung. Four haplotypes showing a geographic pattern, were observed in *C. dsinezumi* (96.0–99.5%): two from the main-islands of Japan (Toyama and Gifu) and the remaining two from small adjoining islands (Chiburijima and Yakushima). Intraspecific geographical divergences were also observed between specimens of *C. lasiura* from China and Korea (99.0%); *C. attenuata* from Taichung and Pingtung (99.5%); and *C. suaveolens* from Tsushima and Taichung (98.8–99.0%). On the other hand, specimens of *C. watasei* from Amamioshima and Okinawajima showed no sequence differences. The pairwise sequence similarities between conspecifics were consistently larger (96.0–99.8%) than the pairwise values for different species of the genus *Crociodura* (85.3–94.3%). The similarities of *Suncus murinus* with *Crociodura* species examined were mostly smaller (83.8–86.8%) than those within *Crociodura*, but with a slight overlap.

The neighbor joining tree is shown in Fig. 3A. Monophyly was supported for each of the species having more than one haplotype (74.9–98.4% bootstrap values) and four major clusters were formed with more than 50% bootstrap values: *C. dsinezumi* and *C. lasiura*; *C. attenuata*; *C. watasei* and *S.*



**Fig. 1.** The map showing sampling localities of the species of *Crocidura* and *Suncus* examined in the present study. Locality numbers refer to those in Table 1.

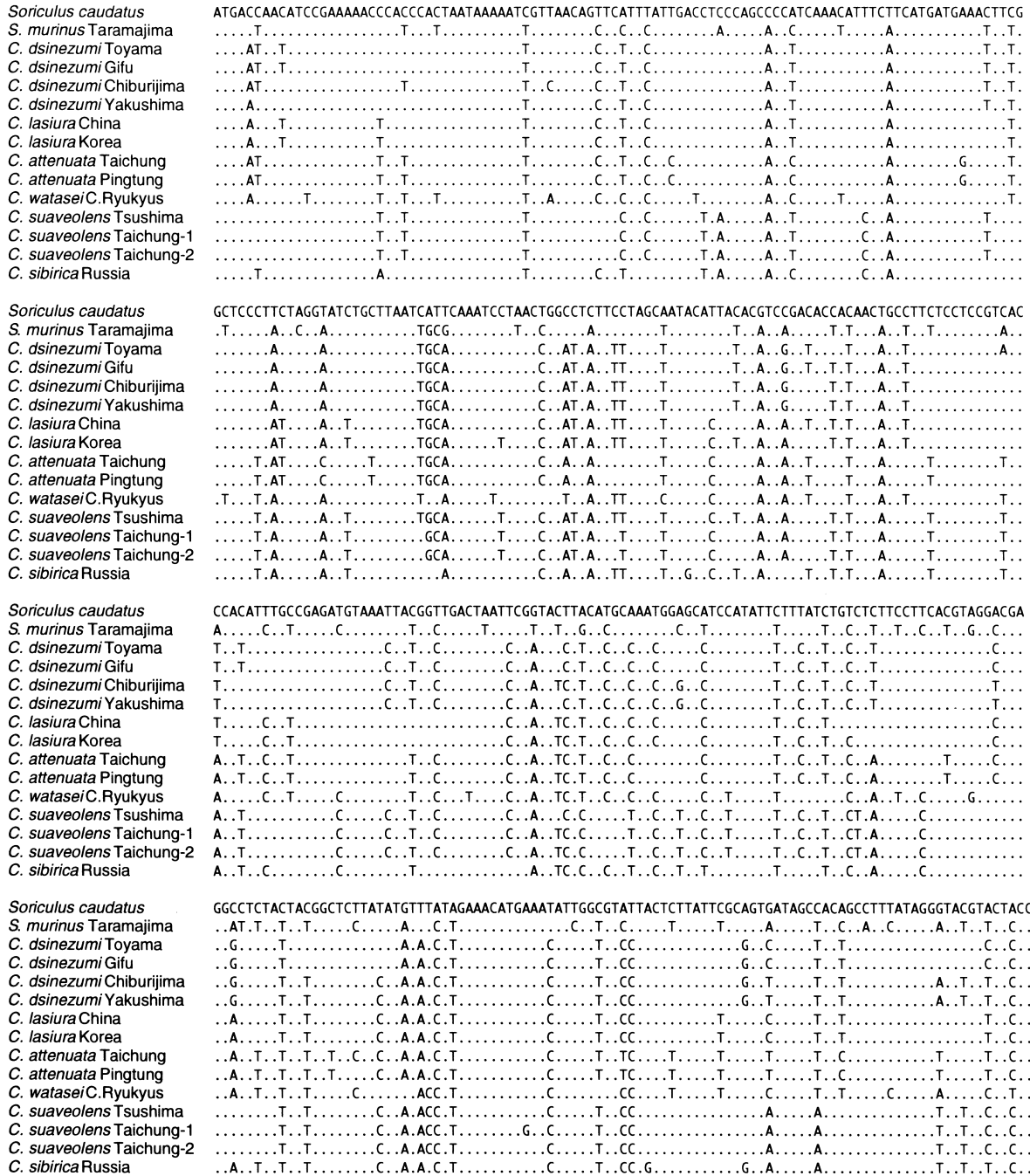
*murinus*; and *C. sibirica* and *C. suaveolens*. Such relationships other than the monophyly of *C. dsinezumi* and *C. lasiura* were also recognized in the maximum parsimony tree (Fig. 3B).

## DISCUSSION

The genus *Suncus*, broadly occurring in Africa, and South and Southeast Asia, is considered to be closely related to the genus *Crocidura* (Corbet and Hill, 1992). Since the former is morphologically distinguished from the latter only by the retention of four upper unicuspid teeth, validity of the current taxonomic arrangement of the two genera has required verifications (Corbet and Hill, 1992). Our results showed that *C. watasei* is more closely related to *S. murinus* than to other East Asian *Crocidura*, and this supports the non-monophyly

of the genus in its current arrangement as was suspected by a few previous authors (Butler *et al.*, 1989; Maddalena, 1990; McLellan, 1994). Geographically, both the genus *Suncus* as a whole and *S. murinus* are considered to have been originated in South Asia (Butler, 1998; Yosida, 1982). It is thus likely that *S. murinus* and *C. watasei* had derived from a common ancestor in South Asia.

In the neighbor joining analysis, *C. dsinezumi* from the main-islands of Japan was exclusively clustered with *C. lasiura* from northeastern China and Korea. These two species have similar karyotypes ( $2n=40$ ), both consisting of three meta- or submetacentric, four subtelocentric, and twelve acrocentric pairs in autosomes ( $FN=56$ ) (Harada *et al.*, 1985; Zima *et al.*, 1998: see Maddalena and Ruedi [1994] for chromosome terminology). Such a chromosomal arrangement is also shared by two Oriental species: *C. attenuata* from Taiwan (Motokawa



**Fig. 2.** Aligned sequences for 402 base-pairs of the cytochrome *b* gene in *Crocidura* and *Suncus*. Dots indicate identity with the sequence of *Soriculus caudatus*, which data are taken from Ohdachi *et al.* (1997).

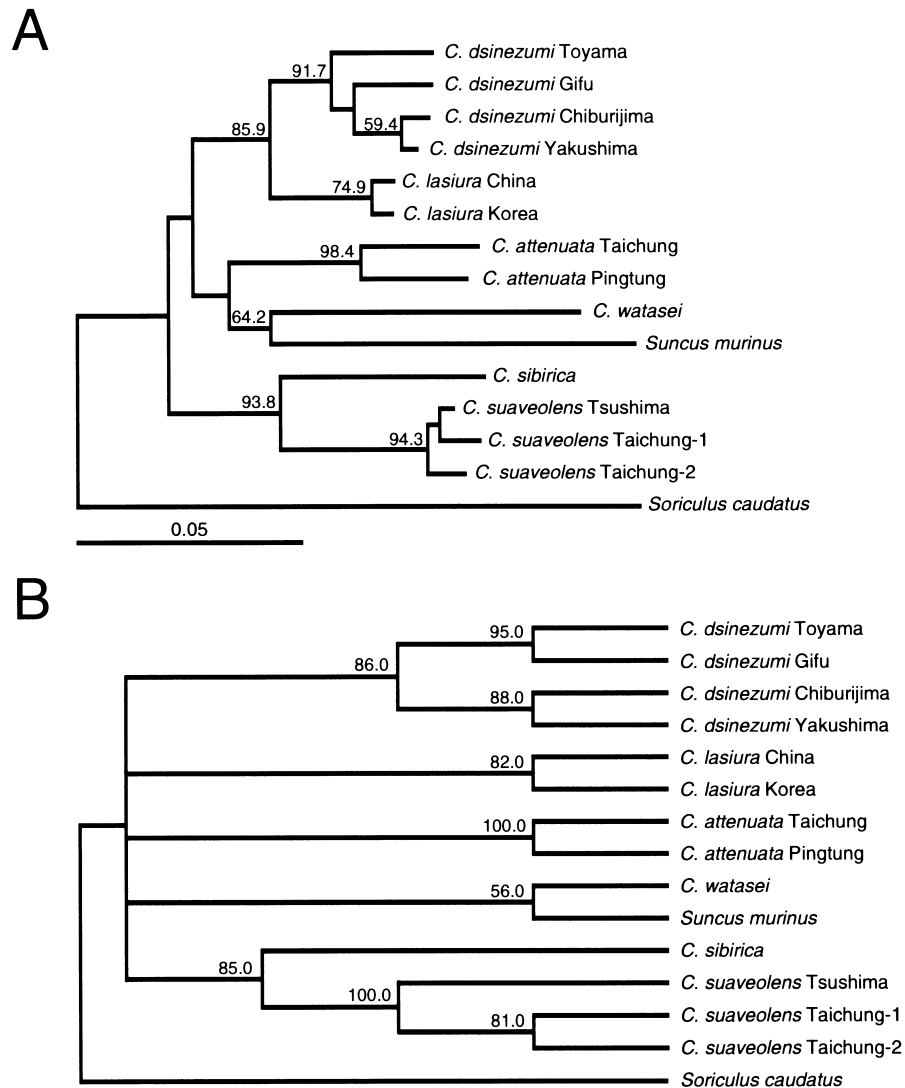
*et al.*, 1997; Fang *et al.*, 1997), and *C. fuliginosa* from Malay Peninsula (2n=40, FN=54–58 with intraspecific variation; Ruedi *et al.*, 1990; Ruedi and Vogel, 1995). Dobson (1994) assumed on the basis of fossil evidence that the ancestral form of *C. dsinezumi* had migrated to Japan from eastern China or Korean Peninsula by the middle Pleistocene. In these possible “original regions” of *C. dsinezumi*, two congeneric species, *C. suaveolens* and *C. lasiura*, are currently distributed (Corbet, 1978), of which *C. suaveolens* was considered to be closer to *C. dsinezumi* by several authors (Kuroda, 1934;

Jenkins, 1976) mainly because of their similar body sizes. Our molecular data, as well as previous karyological data (2n=40, FN=50 in *C. suaveolens*: Tsuchiya, 1987), however, suggest that *C. dsinezumi* actually shared the latest common ancestor not with *C. suaveolens*, but with *C. lasiura*.

The geographic origin of the common ancestor of *C. dsinezumi* and *C. lasiura* also remains uncertain. Some authors (Corbet, 1978; Corbet and Hill, 1992; Hutterer, 1993) considered that the Shanghai form (*C. campuslincolnensis*) in the south of Yangtze River, a border of the Palearctic and

**Table 2.** Percentage similarities of cytochrome *b* sequences of *Crocidura*, *Suncus*, and *Soriculus caudatus* (outgroup taxon).

Sample	1	2	3	4	5	6	7	8	9	10	11	12	13	14	15
1. <i>Soriculus caudatus</i>	–														
2. <i>S. murinus</i> Taramajima	79.9	–													
3. <i>C. dsinezumi</i> Toyama	82.8	85.1	–												
4. <i>C. dsinezumi</i> Gifu	82.8	85.1	99.5	–											
5. <i>C. dsinezumi</i> Chiburijima	81.6	86.6	96.0	96.5	–										
6. <i>C. dsinezumi</i> Yakushima	82.6	86.1	96.5	97.0	99.0	–									
7. <i>C. lasiura</i> China	82.8	84.8	93.8	94.3	93.3	93.8	–								
8. <i>C. lasiura</i> Korea	82.3	85.3	93.8	94.3	93.8	94.3	99.0	–							
9. <i>C. attenuata</i> Taichung	80.1	86.8	89.3	89.1	89.3	88.8	91.5	91.0	–						
10. <i>C. attenuata</i> Pingtung	80.6	86.6	89.6	89.6	89.8	89.3	92.0	91.5	99.5	–					
11. <i>C. watasei</i> C. Ryukyus	79.9	86.3	86.6	86.3	86.3	86.1	88.3	87.8	88.1	87.6	–				
12. <i>C. suaveolens</i> Tsushima	80.6	84.1	89.6	89.8	90.3	90.8	88.6	89.6	87.1	87.1	85.6	–			
13. <i>C. suaveolens</i> Taichung-1	80.8	83.8	88.3	88.6	89.6	89.6	88.3	88.8	87.3	87.3	85.3	98.8	–		
14. <i>C. suaveolens</i> Taichung-2	81.1	84.1	88.6	88.8	89.8	89.8	88.6	89.1	87.6	87.6	85.6	99.0	99.8	–	
15. <i>C. sibirica</i> Russia	81.8	85.1	87.6	87.8	88.3	88.3	88.3	88.3	88.3	88.3	85.3	91.8	91.5	91.8	–

**Fig. 3.** The neighbor joining (A) and maximum parsimony (B) trees for *Crocidura* and *Suncus* inferred from the cytochrome *b* gene sequences. *Soriculus caudatus* was used as outgroup. Nodal values indicate percent supports (>50%) for branches in 1000 bootstrap replications.

Oriental mammal faunas in eastern China (Huang, 1985; Zhang *et al.*, 1997), is conspecific with *C. lasiura*. Although the present results do not give any information regarding the relationship of this lineage (*C. lasiura* and *C. dsinezumi*), the high karyological similarity with the Oriental *C. attenuata* and *C. fuliginosa* (see Zima *et al.*, 1998) and the distribution of the species of *C. lasiura* crossing Yangtze River suggest the southern origin of *C. lasiura* and *C. dsinezumi*.

*Crocidura watasei* is an endemic species to the central Ryukyus, which ancestor may have colonized there during the late Miocene (Motokawa, 1999) when the most recent landbridge connected the central Ryukyus to the continent (Ota, 1998). This species is characterized by its unique karyotype with the reduced chromosome number ( $2n=26$ ,  $FN=52$ ) within the genus *Crocidura* (Maddalena and Ruedi, 1994). Nevertheless, the G-banding pattern of *C. watasei* is highly homologous to the typical  $2n=40$ ,  $FN=56$  format (e.g., *C. dsinezumi*), and their differences are thus explained by assuming the occurrences of several Robertsonian fusions and translocations in the process of emergence of the former (Harada *et al.*, 1985). Two geographic groups (i.e., northern and southern groups) are recognized in *C. watasei* on the basis of the morphometric variation (Motokawa *et al.*, 1996), but in the present study no sequence differences were detected between one specimen from Amamioshima in the northern group and two from Okinawajima in the southern group.

The close relationship between *C. sibirica* from Central Asia and *C. suaveolens* from East Asia is well demonstrated in the present study. The standard karyotypes of these two species are same ( $2n=40$ ,  $FN=50$ ), comprising of two meta- or submetacentric, two subtelocentric and 15 acrocentric pairs in autosomes (Grafodatsky *et al.*, 1988; Tsuchiya, 1987; Fang *et al.*, 1997). This karyotypic format is also shared by the Central Asian and European *C. suaveolens* and *C. gueldenstaedtii* (Catzefflis *et al.*, 1985; Zima *et al.*, 1998). Geographic ranges of the *Crocidura* species having the  $2n=40$ ,  $FN=50$  format, almost exclusively spread over the Palaearctic region. But in East Asia, the range of *C. suaveolens* slightly extends to the southern side of Yangtze River in the continent (Zhang *et al.*, 1997) and to Taiwan in the insular region (Fang *et al.*, 1997). Fang *et al.* (1997) discussed that the Taiwanese *C. suaveolens* might have migrated from continent China in no earlier than the Pleistocene. Our results also suggest the recent colonization of *C. suaveolens* to Taiwan from the north, because the genetic divergence among populations of the species from Taiwan and Tsushima is smaller than that observed between *C. dsinezumi* populations.

Butler (1998) supposed from fossil evidence that the common ancestor of the genus *Crocidura* had evolved in Africa during the late Miocene and subsequently migrated to the Eurasian region. Such a view is also supported by the protein and chromosomal data (Maddalena, 1990; Maddalena and Ruedi, 1994). According to the hypothetical scenario of Maddalena and Ruedi (1994), this ancestral stock had the karyotype of  $2n=38$  and  $FN=54$  to 58, characterized by the

occurrence of four metacentric pairs. The  $2n=40$ ,  $FN=56$  karyomorph restricted to the southeastern continent and East Asia is much similar to the hypothetical ancestral format in general arrangement including the presence of four meta- or submetacentric pairs in autosomes. In addition, *C. attenuata* is distantly related to the other species with the  $2n=40$ ,  $FN=56$  karyotypes (*C. dsinezumi* and *C. lasiura*) (Fig. 3), and this suggests the plesiomorphic state of the  $2n=40$ ,  $FN=56$  format in the East Asian *Crocidura*. The common ancestor of the species with the  $2n=40$ ,  $FN=50$  karyomorph (e.g., *C. suaveolens*, *C. sibirica*) might have emerged somewhere in the Palaearctic region from the  $2n=40$ ,  $FN=56$  lineage.

The present molecular and the previous karyological data strongly suggest that the East Asian *Crocidura* is a mixture of southern and northern elements that are characterized by different fundamental numbers in karyotypes ( $FN=56$  and 50, respectively). Future studies based on more species from the Palaearctic and Oriental parts of the continent should be performed to reconstruct the phylogenetic relationships of the genus *Crocidura*.

#### ACKNOWLEDGMENTS

We wish to express our sincere thanks to M. Asakawa for providing a specimen of *C. dsinezumi* from Chiburijima; to S. Aiba, S. Hattori, H. Ota, M. Izawa, S. Matsumura, S.-L. Chen, and J. Motokawa for helping with field work; and to K. Serizawa for laboratory assistance. We also thank to T. Hikida, M. Honda, and J. Motokawa for critical comments on early versions of the manuscripts. This study was supported in part by a grant from the Fujiwara Natural History Foundation (to MM), Grant-in-Aid for Encouragement of Young Scientists from the Japan Society for the Promotion of Sciences (No. 11740472, to MM), and Grant-in-Aid for Scientific Research (C) from the Japan Ministry of Education, Science, Sports and Culture (No. 09839037, to KK).

#### REFERENCES

- Abe H, Ishii N, Kaneko Y, Maeda K, Miura S, Yoneda M (1994) A Pictorial Guide to the Mammals of Japan. Tokai University Press, Tokyo (in Japanese)
- Anderson S, Bankier AT, Barrell BG, de Bruijn MHL, Coulson AR, Drouin J, Eperson IC, Nierlich DP, Roe BA, Sanger F, Shreier PH, Smith AJH, Staden R, Young IG (1981) Sequence and organization of the human mitochondrial genome. *Nature* 290: 457–465
- Butler PM (1998) Fossil history of shrews in Africa. In "Evolution of Shrews" Ed by Wójcik JM, Wolsan M, Mammal Research Institute, Polish Academy of Sciences, Białowieża, pp 121–132
- Butler PM, Thorpe RS, Greenwood M (1989) Interspecific relations of African crocidurine shrews (Mammalia: Soricidae) based on multivariate analysis of mandibular data. *Zool J Linn Soc* 96: 373–412
- Catzefflis F, Maddalena T, Hellwing S, Vogel P (1985) Unexpected findings on the taxonomic status of East Mediterranean *Crocidura russula* auct. (Mammalia, Insectivora). *Z Säugetierk* 50: 185–201
- Corbet GB (1978) The Mammals of the Palaearctic Region. Cornell University Press, London
- Corbet GB, Hill JE (1992) The Mammals of the Indomalayan Region. Oxford University Press, New York
- Dobson M (1994) Patterns of distribution in Japanese land mammals.

- Mamm Rev 24: 91–111
- Ellerman JR, Morrison-Scott TCS (1951) Checklist of Palaearctic and Indian Mammals 1758-1946. British Museum (Natural History), London
- Fang YP, Lee LL, Yew FH, Yu HT (1997) Systematics of white-toothed shrews (*Crociodura*) (Mammalia: Insectivora: Soricidae) of Taiwan: karyological and morphological studies. *J Zool* 242: 151–166
- Felsenstein J (1985) Confidence limits on phylogenies: An approach using the bootstrap. *Evolution* 39: 783–791
- Felsenstein J (1993) PHYLIP (phylogeny inference package) Version 3.5c. Distributed by the author, Dept Genet, Univ Washington, Seattle
- Grafodatsky AS, Radzhabli SI, Sharshov AV, Zaitsev MV (1988) Karyotypes of five *Crociodura* species of the USSR fauna. *Citologia* 30: 1247–1250 (in Russian with English abstract)
- Harada M, Yosida TH, Hattori S, Takada S (1985) Cytological studies on Insectivora. III Karyotype comparison of two *Crociodura* species in Japan. *Proc. Japan Acad* 61B: 371–374
- Heaney LR, Ruedi M (1994) A preliminary analysis of biogeography and phylogeny of *Crociodura* from the Philippines. In "Advances in the Biology of Shrews" Ed by Merritt JF, Kirkland GL Jr, Rose RK, Carnegie Museum of Natural History, Pittsburgh, pp 357–377
- Huang W (1985) The demarcation line between the Palaearctic and Oriental Regions in Eastern China. "Contemporary Mammalogy in China and Japan" Ed by Kawamichi T, Mammalogical Society of Japan, pp 133–141
- Hutterer R (1993) Order Insectivora. "Mammal Species of the World" 2nd ed, Ed by Wilson DE, Reeder DM, Smithsonian Institution Press, Washington, pp 69–130
- Jameson EW, Jones GS (1977) The Soricidae of Taiwan. *Proc Biol Soc Wash* 90: 459–482
- Jenkins PD (1976) Variation in eurasian shrews of the genus *Crociodura*. *Bull Br Mus Nat Hist (Zool)* 30: 271–309
- Jenkins PD, Smith AL (1995) A new species of *Crociodura* (Insectivora: Soricidae) recovered from owl pellets in Thailand. *Bull Nat Hist Mus (Zool)* 61: 103–109
- Kimura M (1980) A simple model for estimating evolutionary rates of base substitutions through comparative studies of nucleotide sequences. *J Mol Evol* 16: 111–120
- Kitchener DJ, Hisheh S, Schmitt LH, Suyanto A (1994) Shrews (Soricidae: *Crociodura*) from the Lesser Sunda Islands, and Southeast Maluku, Eastern Indonesia. *Australian Mamm* 17: 7–17
- Kuroda N (1934) Korean mammals preserved in the collection of Marquis Yamashina. *J Mamm* 15: 229–239
- Lekagul B, McNeely JA (1977) Mammals of Thailand. Kurusapha Ladprao Press, Bangkok, 758pp
- Lin JY, Lin LK (1983) A note on the zoogeography of the mammals in Taiwan. *Ann Taiwan Mus* 26: 53–62 (in Chinese)
- Maddalena T (1990) Systematics and biogeography of Afrotropical and Palaearctic shrews of the genus *Crociodura* (Insectivora: Soricidae): An electrophoretic approach. In "Vertebrates in the Tropics" Ed by Peters G, Hutterer R, Museum Alexander Koenig, Bonn, pp 297–308
- Maddalena T, Ruedi M (1994) Chromosomal evolution in the genus *Crociodura* (Insectivora: Soricidae). In "Advances in the Biology of Shrews" Ed by Merritt JF, Kirkland GL Jr, Rose RK, Carnegie Museum of Natural History, Pittsburgh, pp 335–344
- McLellan LJ (1994) Evolution and phylogenetic affinities of the African species of *Crociodura*, *Suncus*, and *Sylvisorex* (Insectivora: Soricidae). In "Advances in the Biology of Shrews" Ed by Merritt JF, Kirkland GL Jr, Rose RK, Carnegie Museum of Natural History, Pittsburgh, pp 379–391
- Motokawa M (1998) Reevaluation of the Orii's shrew, *Crociodura dsinezumi orii* Kuroda, 1924 (Insectivora, Soricidae) in the Ryukyu Archipelago, Japan. *Mammalia* 62: 259–267
- Motokawa M (1999) Biogeography of living mammals in the Ryukyu Islands. *Tropics* (in press)
- Motokawa M, Harada M (1998) Karyotype of the Hill's shrew *Crociodura hilliana* Jenkins & Smith, 1995 (Mammalia: Insectivora: Soricidae) from central Thailand. *Raffles Bull Zool* 46: 151–156
- Motokawa M, Hattori S, Ota H, Hikida T (1996) Geographic variation in the Watase's shrew *Crociodura watasei* (Insectivora, Soricidae) from the Ryukyu Archipelago, Japan. *Mammalia* 60: 243–254
- Motokawa M, Harada M, Lin LK, Koyasu K, Hattori S (1997) Karyological study of the gray shrew *Crociodura attenuata* (Mammalia: Insectivora) from Taiwan. *Zool Stud* 36: 70–73
- Narita Y, Oda S, Harada M, Asakawa M, Koyasu K, Kobayashi S, Dobrotvorsky AK, Mironova NB, Kornienko SI, Kovalyova VJ, Panov VV, Borodin PM (1995) Survey and capture of the small mammals in Novosibirsk, Altai and Baikal regions of Russia. *J Growth* 34: 69–85
- Oda S (1985) Curly hair, a new mutation in the shrew, *Suncus murinus*. *Ann Res Inst Environ Med Nagoya Univ* 36: 226–227 (in Japanese)
- Ohdachi S, Masuda R, Abe H, Adachi J, Dokuchaev NE, Haukisalmi V, Yoshida MC (1997) Phylogeny of Eurasian soricine shrews (Insectivora, Mammalia) inferred from the mitochondrial cytochrome *b* gene sequences. *Zool Sci* 14: 527–532
- Ota H (1998) Geographic patterns of endemism and speciation in amphibians and reptiles of the Ryukyu Archipelago, Japan, with special reference to their paleogeographical implications. *Res Popul Ecol* 40: 189–204
- Ruedi M (1995) Taxonomic revision of shrews of the genus *Crociodura* from the Sunda Shelf and Sulawesi with description of two new species (Mammalia: Soricidae). *Zool J Linn Soc* 115: 211–265
- Ruedi M (1996) Phylogenetic evolution and biogeography of south-east Asian shrews (genus *Crociodura*: Soricidae). *Biol J Linn Soc* 58: 197–219
- Ruedi M, Vogel P (1995) Chromosomal evolution and zoogeographic origin of southeast Asian shrews (genus *Crociodura*). *Experientia* 51: 174–178
- Ruedi M, Maddalena T, Yong HS, Vogel P (1990) The *Crociodura fuliginosa* species complex (Mammalia: Insectivora) in Peninsular Malaysia: Biological, karyological and genetical evidence. *Biochem Syst Ecol* 18: 573–581
- Ruedi M, Maddalena T, Vogel P, Obara Y (1993) Systematics and biogeographic relationships of the Japanese white-toothed shrew (*Crociodura dsinezumi*). *J Mamm* 74: 535–543
- Ruedi M, Auberson M, Savolainen V (1998) Biogeography of Sulawesi shrews: Testing for their origin with a parametric bootstrap on molecular data. *Mol Phylogenetics Evol* 9: 567–571
- Saitou N, Nei M (1987) The neighbor-joining method: a new method for reconstructing phylogenetic trees. *Mol Biol Evol* 4: 406–425
- Sambrook J, Fritsch EF, Maniatis T (1989) *Molecular Cloning: A Laboratory Manual*. 2nd ed, Cold Spring Harbor Laboratory Press, New York
- Suzuki H, Minato S, Sakurai S, Tsuchiya K, Fokin IM (1997) Phylogenetic position and geographic differentiation of the Japanese dormouse, *Glirulus japonicus*, revealed by variations among rDNA, mtDNA and *Sry* gene. *Zool Sci* 14: 167–173
- Swofford DL (1993) PAUP: Phylogenetic Analysis Using Parsimony, Version 3.1. Illinois Natural History Survey, Champaign (on disk)
- Tsuchiya K (1987) Cytological and biochemical studies of Insectivora in Tsushima Island. In "Nature of Tsushima, Tsushima Natural Resource Research Report" Ed by Nagasaki Prefectural Government, Nagasaki, pp 111–124 (in Japanese)
- Wolsan M, Hutterer R (1998) A list of the living species of shrews. In "Evolution of Shrews" Ed by Wójcik JM, Wolsan M, Mammal Research Institute, Polish Academy of Sciences, Białowieża, pp 425–448
- Yosida TH (1982) Cytological studies on Insectivora. II. Geographi-



- cal variation of chromosomes in the house shrew, *Suncus murinus* (Soricidae), in East, Southeast and Southwest Asia, with a note on the karyotype evolution and distribution. *Jpn J Genet* 57: 101–111
- Zhang Y, Jin S, Quan G, Li S, Ye Z, Wang F, Zhang M (1997) Distribution of Mammalian Species in China. China Forestry Publishing House, Beijing
- Zima J, Lukacova L, Macholan M (1998) Chromosomal evolution in shrews. In "Evolution of Shrews" Ed by Wójcik JM, Wolsan M, Mammal Research Institute, Polish Academy of Sciences, Białowieża, pp 175–218

(Received July 29, 1999 / Accepted December 3, 1999)

#### APPENDIX.

Specimens examined in this study.

They are deposited with the numbers given in parentheses. See text for abbreviations of acronyms.

*Crociodura dsinezumi*: Tateyama-machi, Toyama, Japan (OCUMS 3703); Shirakawa-mura, Gifu, Japan (OCUMS 4346); Chiburijima Island, Oki Group, Japan (KUZ-M 951); Yakushima Island, Osumi Group, Japan (KUZ-M 938, 941). *C. lasiura*: Changchun, Jilin Province, China (AGUD 900722–55); Hapcheon Gun, Kyungsangnam Do, Korea (OCUMS 5272). *C. attenuata*: Taichung, Taiwan, R.O.C. (KUZ-M 1121); Pingtung Hsien, Taiwan, R.O.C. (OCUMS 6865, 6866). *C. watasei*: Amamioshima Island, Amami Group, Japan (OCUMS 2470); Okinawajima Island, Okinawa Group, Japan (KUZ-M 419, 440). *C. suaveolens*: Tsushima Island, Japan (KUZ-M 1432); Taichung, Taiwan, R.O.C. (KUZ-M 966, 1127 [Taichung-1], KUZ-M 1128 [Taichung-2]). *C. sibirica*: Academgorodok City, Russia (OCUMS 6410, 6412). *Suncus murinus*: Taramajima Island, Miyako Group, Japan (OCUMS 6882).