



## **In vivo and in vitro Effects of a Protease Inhibitor (E-64) on Cell Division of Xenopus eggs**

Authors: Ishii, Takashi, Aoki, Takehiko, Hosoyama, Yoshiyuki, and Miyata, Shohei

Source: Zoological Science, 17(9) : 1283-1287

Published By: Zoological Society of Japan

URL: <https://doi.org/10.2108/zsj.17.1283>

---

BioOne Complete ([complete.BioOne.org](https://complete.BioOne.org)) is a full-text database of 200 subscribed and open-access titles in the biological, ecological, and environmental sciences published by nonprofit societies, associations, museums, institutions, and presses.

Your use of this PDF, the BioOne Complete website, and all posted and associated content indicates your acceptance of BioOne's Terms of Use, available at [www.bioone.org/terms-of-use](https://www.bioone.org/terms-of-use).

Usage of BioOne Complete content is strictly limited to personal, educational, and non - commercial use. Commercial inquiries or rights and permissions requests should be directed to the individual publisher as copyright holder.

---

BioOne sees sustainable scholarly publishing as an inherently collaborative enterprise connecting authors, nonprofit publishers, academic institutions, research libraries, and research funders in the common goal of maximizing access to critical research.

# *In Vivo* and *in Vitro* Effects of a Protease Inhibitor (E-64) on Cell Division of *Xenopus* eggs

Takashi Ishii, Takehiko Aoki, Yoshiyuki Hosoyama and Shohei Miyata\*

Department of Chemistry, College of Humanities and Sciences, Nihon University,  
Sakurajosui, Setagaya-ku, Tokyo 156, Japan

**ABSTRACT**—Microinjection of E-64 into single blastomeres of *Xenopus* embryos at the 2-cell stage arrested cell division. *In vitro* treatment of cultured individual cells at the blastular embryonic stage with E-64 also arrested the cleavages. We examined the effects of E-64 on the proteasome and calcium-activated protease in *Xenopus* embryos *in vitro*. E-64 inhibited calpain-like protease activity. Calpain-like protease activity was stimulated during cleavage. These results indicated that a calpain-like protease might be involved in the cell division of early *Xenopus* embryos.

## INTRODUCTION

After fertilization, the early embryonic development of *Xenopus* is characterized by a number of rapid synchronous cell cycles, and the embryogenetic events are precisely timed. The first cell division occurs about 90 min after fertilization, and the next 11 cell cycles each last approximately 25–30 min and comprise alternating S and M phases. After these 12 divisions, the cell cycles lengthen and become asynchronous (Newport and Kirschner, 1982a, b). There are three major control or transition points of the cell division cycles: the conversion of quiescent cells to a state of proliferation, the initiation of DNA synthesis by the growing cells, and the induction of mitosis of cells with newly replicated genomes (Dunphy and Newport, 1988; Stillman, 1996). Accumulated evidence indicates that regulation of the multiple processes involved in the G1/S transition, i.e., mitosis, meiosis, gene transcription and the intercellular signal transduction pathway, requires the rapid elimination of key regulatory proteins or rate-limiting enzymes (Ciechanover, 1994; King, 1996; Hoyt, 1997; Sori-machi, 1997). It has been proposed that at least three different proteolytic pathways are involved in the degradative processes required to control the various steps in eukaryotic cell cycles: ubiquitin-proteasomes, calpains and lysosomal proteases. In previous studies, we have studied cathepsin L-like protease that are activated during the early embryogenetic stages of *Xenopus* (Miyata and Kihara, 1995; Miyata and Kubo, 1997). In the present study, we examined the effects of a thiol protease inhibitor, E-64, on cell division, in order to examine the roles of cysteine proteases in the cell cycle regulation of *Xenopus* eggs. We found that E-64 arrested cell division of *Xenopus* embryos at the 2-cell stage and cells isolated from the blastula embryo.

\* Corresponding author: Tel. +81-3-5317-9735;  
FAX. +81-3-5317-9433.

## MATERIALS AND METHODS

### Embryos and microinjection

Eggs of *Xenopus laevis* were obtained by injection of a gonadotropic hormone and de-jellied with 2.5% sodium thioglycolate. The embryos were allowed to develop to the 2-cell stage at room temperature. trans-Epoxy succinyl-L-leucylamido-(4-guanidino) butane (E-64) was dissolved in dimethylsulfoxide (DMSO) and, in order to ensure that the effect of the DMSO was constant for each concentration of E-64 injected, the same volume of 100% DMSO was used for each injection. A 20 nl aliquot of the required E-64 solution or DMSO (control) was injected into one side of an embryo by inserting the tip of the micropipette into the region of the animal from above and pushing it until it reached the center of the blastomere.

The total volume of a *Xenopus* egg, which is 1.2–1.3 mm diameter, is about 1000 nl, and about 50% of this is composed of nonorganelar cytoplasm (Han *et al.*, 1992). At the 2-cell stage, the volume of the fluid cytoplasm of one blastomere is a quarter of the total volume of the egg (250 nl), and this volume was used to calculate the concentration of E-64 injected into each egg. Therefore, when the concentration of E-64 in the micropipette was 2.5, 5 or 15 ng/nl, the final cytoplasmic concentration was 200, 400 and 1,200 µg/ml, respectively.

### Cell culture

Animal cap pieces were dissected from stage 8 blastulae. Single cells from the inner surface of the pieces were separated off by directing a gentle stream of calcium- and magnesium-free medium (50 mM phosphate buffer containing 35 mM NaCl and 1 mM KCl, pH 7.0) as described by Godsave and Slack (1989). Two or three cells were transferred into a well of a Terasaki plate filled with 10 µl of 2 mg/ml γ-globulin in a simple salt solution (NAM/2) and cultured for 20 h at 25°C.

### Enzyme assays

Proteasome activity was determined using the method reported by Azuma *et al.* (1991) with modifications. The assay was carried out using a 200 µl 100 mM Tris-HCl buffer (pH 8.2) containing 5 mM MgCl<sub>2</sub> with or without 2 mM ATP and 50 µM Suc-Leu-Leu-Val-Tyr-4-methylcoumaryl-7-amide (MCA) as the substrate. An aliquot (10 µl–20 µl) of an enzyme solution was added, and the reaction mixture was incubated at 37°C. After 1 hr, the proteolytic reaction was stopped

by adding 100  $\mu$ l 10% SDS and 2 ml 100 mM Tris-HCl buffer (pH 9.0), and the amount of 4-methylcoumaryl-7-amine released was measured fluorometrically (excitation at 360 nm, emission at 460 nm).

Calcium-activated protease activity was measured by using azocasein as the substrate and by means of a method described previously (Inomata *et al.*, 1984). Each 200  $\mu$ l assay reaction mixture comprised 0.2% azocasein, 28 mM 2-mercaptoethanol and 100  $\mu$ M Tris-HCl (pH 7.5) with or without  $\text{CaCl}_2$  (0–100 mM). The reaction was initiated by the addition of 50  $\mu$ l of enzyme solution. After incubation at 30°C for 2 hr, the reaction was stopped by adding 200  $\mu$ l 10% trichloroacetic acid. The mixture was then centrifuged at 3,000 rpm for 10 min, and the proteolytic activity was assayed by measuring the amount of digested products liberated into the trichloroacetic acid-soluble fraction using the reagent for protein assays from Bio-Rad.

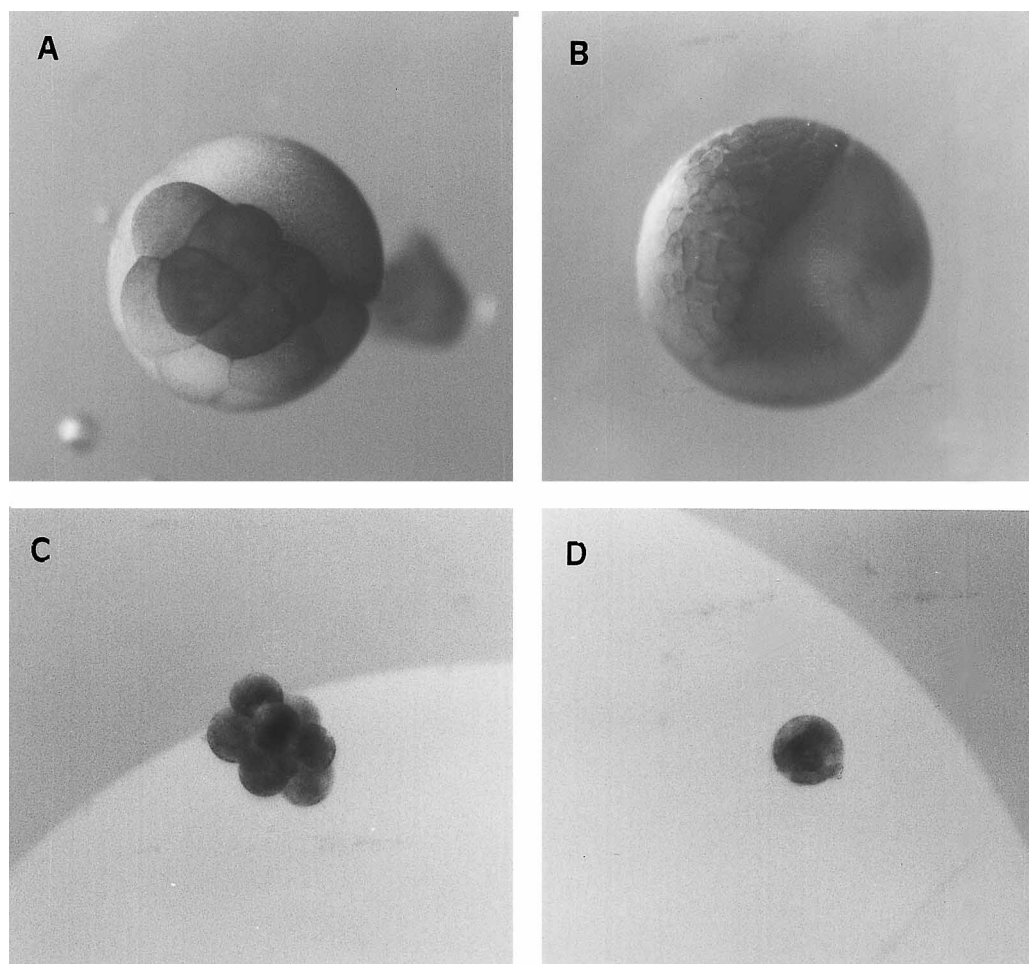
#### Preparation of enzyme samples

In order to assay the proteasome activities of *Xenopus* embryos *in vitro*, aliquots of enzyme samples were prepared using the method reported by Tokumoto and Ishikawa (1993). Five-hundred embryos at the blastula stage were homogenized in 5ml 25mM Tris-HCl buffer (pH 7.9) containing 10 mM 2-mercaptoethanol and 20% glycerol. The homogenate was centrifuged at 36,000 $\times$ g for 30 min at 4°C, and the clear supernatants were subjected to Sepharose 6B column (1 $\times$ 90

cm) gel filtration. Of the 700  $\mu$ l-fractions collected, fraction No. 23 showed the highest proteasome activities. In order to assay the calpain activity of *Xenopus* embryos *in vitro*, a crude enzyme extract was prepared as described by Inomata *et al.* (1983). *Xenopus* embryos (500 embryos at the blastula stage) were homogenized in 5 ml 20 mM Tris-HCl (pH 7.5) containing 5 mM EDTA and 10 mM 2-mercaptoethanol, centrifuged at 17,000 $\times$ g for 15 min, and then the calpain activity of the supernatant was assayed as described above.

## RESULTS

In an attempt to determine whether cell division of early embryos was modified by proteases, we tested the effects of microinjecting the protease inhibitor E-64, which has been demonstrated to react exclusively with essential cysteine residues at the active sites of cysteine proteases *in vivo* and *in vitro* (Tamai *et al.*, 1986; Gour-Salin *et al.*, 1989). Inhibition of cell division by E-64 should confirm the type of cell cleavage-associated protease. Microinjection of 100ng/egg E-64 into one blastomere of a 2-cell stage embryo inhibited cell cleavage. The uninjected sister blastomere developed normally until



**Fig. 1.** Effects of microinjection of E-64 into developing *Xenopus* eggs and treatment of isolated cells with E-64. E-64 (100 ng/egg) was injected into one blastomere of a 2-cell stage embryo after the first cleavage. Figs. 1-A and 1-B show embryos 2 and 4 h after the injection of E-64, respectively. Isolated cells of stage 8 blastulae were cultured in the medium for 20 hr. Fig. 1-C shows a blastomere that was cleaved in the medium. Fig. 1-D shows a blastomere in which cell division is inhibited by E-64 in the medium.

about the 32-cell stage within 2 hr of injection of E-64 into the other blastomere, whereas the injected blastomere was arrested at the 2-cell stage (Fig. 1-A). Fig. 1-B shows such embryos 4 hr after injection, and it is clear that the noninjected blastomere consisted of small normal-looking cells, whereas the injected blastomere was clearly arrested at the 2-cell stage.

We tested three different concentrations of E-64: 50, 100 and 300 ng/egg. Both DMSO alone and E-64 dissolved in DMSO caused similar abnormalities, which varied from complement arrest at the 2-cell stage to cells of irregular sizes due to abnormal cleavage and patchy pigmentation. About 20–25% of the embryos injected with various concentrations of E-64 and with DMSO alone stopped at the 2-cell stage and had died by the time the control sibling embryos developed to the early morula stage. Cell cleavage of about 30% of the blastomeres injected with E-64 and DMSO alone was slower than that of untreated sibling embryos, and some cells of the injected blastomeres became larger than normal. After the mid-blastula stage, the embryos with a noninjected blastomere consisting of small normal-looking cells and a injected blastomere arrested at the 2-cell stage were scored (Table 1). Injection of 50 ng/egg E-64 resulted in cleavage arrest in 33% of the injected embryos. Microinjection of E-64 into one blastomere caused complete arrest of the cell cycle in a concentration-dependent manner. Injection of 100 and 300 ng/egg resulted in cleavage arrest in 87% and 95%, respectively, of the treated embryos, whereas 36 of 54 (67%) of the embryos injected with 50 ng/egg exhibited normal development of the injected blastomeres. After injection of 100 and 300 ng/egg E-64, 13% and 5%, respectively, of the injected embryos developed normally. Control blastomeres were microinjected with an equivalent volume (20 nl/egg) of DMSO, which affected 13% of the injected embryos by arresting the cell cycle. However, 87% of the DMSO-injected embryos developed normally.

We carried out *in vitro* treatments of isolated cells with (2S, 3S)-trans-Epoxy succinyl-L-leucylamido-3-methylbutane (E-64 c) in order to see more clearly the effects of E-64 c on

cell division. Single cells from mid-blastula-stage embryos were able to divide in a non-nutritive medium (Fig. 1-C). Under the standard conditions of the present study, most cells divided between 4 and 10 times. Effects of the protease inhibitor on the division of these cells were studied (Table 2). A concentration of 400 µg/ml E-64 c resulted in inhibition of cleavage in 50% of individual cells, and a concentration of 800 µg/ml E-64 c inhibited cleavage in 83% (Fig. 1-D).

To identify enzyme(s) that related to cell cleavage and were inhibited by E-64 in a concentration-dependent manner, the activities of two proteases in homogenates of embryos were measured *in vitro*. First, we measured proteasome activity (Table 3). To establish whether proteasome activity was present in the embryos, we prepared an embryo homogenate, subjected it to Sepharose 6B gel filtration and obtained a high molecular weight fraction containing proteasome activity. One gel filtration peak showed hydrolytic activity toward Suc-Leu-Leu-Val-Tyr-MCA in the presence of ATP. Adding ATP to the reaction mixture increased the proteasome activity to about twice that of the ATP-free reaction mixture. The ATP-activated proteasome activity was not inhibited by E-64, even at a concentration of 400 µg/ml (Table 3).

E-64 inhibits the activities of cysteine proteases, including cathepsin and calpain, and it has been reported that it

**Table 1.** Effects of microinjection of E-64 into developing *Xenopus* eggs.

E-64 and DMSO, at the indicated concentrations, were injected into the blastomeres of 2-cell stage *Xenopus* embryos and the effects were observed 3 hr later. The data presented are the numbers of embryos showing cell cycle arrest and normal development.

DMSO or E-64 (µg/ml)	Embryos arrested at 2-cell stage(%)	Embryos showing normal development (%)
DMSO	7 (13%)	45 (87%)
E-64		
200 (50 ng/egg)	18 (33%)	36 (67%)
400 (100 ng/egg)	47 (87%)	9 (13%)
1200 (300 ng/egg)	52 (95%)	3 (5%)

**Table 2.** Effects of E-64-c treatment on cells isolated from blastula embryos

Isolated cells from blastulae were cultured in a medium containing 2% DMSO and 100 µg/ml, 200 µg/ml, 400 µg/ml or 800 µg/ml E-64c. After 20 hr, cleavage of blastomeres were observed under a microscope.

DMSO or E-64c (µg/ml)	No. of non-cleaved cells	No. of cleaved cells
2% DMSO	16 (5.4%)	279 (95%)
100	24 (8.5%)	262 (92%)
200	70 (26%)	197 (74%)
400	117 (50%)	117 (50%)
800	217 (83%)	44 (17%)

**Table 3.** Effects of E-64 on proteasome and calcium-activated protease.

The enzyme activities were measured as described in MATERIALS AND METHODS. The activities of the control reaction mixtures containing no E-64, ATP or CaCl<sub>2</sub> were considered to be 100%, and the activities in the presence of ATP or CaCl<sub>2</sub> and E-64 and ATP or CaCl<sub>2</sub> were expressed relative to these values.

Class of protease	E-64	Addition	Activity (%)
Proteasome	–		100
	–	ATP	210
	400 µg/ml	ATP	202
Calpain-like protease	–		100
	–	5 µM Ca <sup>2+</sup>	380
	–	5 µM Ca <sup>2+</sup>	820
	200 µg/ml	5 µM Ca <sup>2+</sup>	130
	400 µg/ml	5 µM Ca <sup>2+</sup>	98
	200 µg/ml	5 µM Ca <sup>2+</sup>	162
	400 µg/ml	5 µM Ca <sup>2+</sup>	93

preferentially inhibits the activity of calcium-activated proteases, although this effect was not specific (Inomata *et al.*, 1984; Gour-Salin *et al.*, 1994). Therefore, we examined the effect of E-64 on the activity of a calcium-activated protease in a *Xenopus* embryo homogenate (Table 3). Adding 5  $\mu\text{M}$   $\text{CaCl}_2$  to the reaction mixture resulted in a 3.8-fold increase in activity compared with that of the mixture without  $\text{CaCl}_2$ , and the activities of the calcium-activated protease in both mixtures were inhibited by 400  $\mu\text{g/ml}$  of E-64. Addition of 5mM  $\text{CaCl}_2$  led to 8-fold higher activity compared to that without  $\text{CaCl}_2$ , and the activities of the calcium-activated protease were also inhibited by 400  $\mu\text{g/ml}$  E-64. In light of its requirement for calcium and its sensitivity to E-64, it is likely that this proteolytic activity was mediated by a member of the calpain family of proteases.

The changes in calpain-like protease activities were determined during the early stage of embryo development (Table 4). A gradual increase in cystein protease activity occurred after fertilization. Micro calpain-like protease activity was enhanced by about 200–250% in blastula or gastrula embryo as compared to that in unfertilized eggs. Milli calpain-like protease activity was increased by about 500% in blastula or gastrula embryos in comparison with that in unfertilized eggs.

**Table 4.** Changes in proteolytic activity during development  
Embryos were collected at different stages of development. *Xenopus* eggs and embryos (100 eggs and 100 embryos) were homogenized in 1 ml 20 mM Tris-HCl (pH 7.5) containing 5 mM EDTA and 10 mM 2-mercaptoethanol, centrifuged at 17,000 $\times$ g for 15 min, and then the cystein protease and activity of calcium-activated protease in the supernatant was assayed as described in the MATERIALS AND METHODS section. The activity of the unfertilized eggs containing no  $\text{CaCl}_2$  was considered to be 100%, and the activities of unfertilized eggs, blastula embryos and gastrula embryos in the presence of  $\text{CaCl}_2$  were expressed relative to that value.

Calcium concentrations	Activity (%) in unfertilized eggs	Activity (%) in blastula embryos	Activity (%) in Gastrula embryos
0	100	130	147
5 $\mu\text{M}$	79	210	267
5 mM	85	495	492

## DISCUSSION

In an attempt to identify the protease(s) involved in the cell cycle in early *Xenopus* embryo development, we studied the effects of E-64 on cell cleavage in development. Equivalent concentrations of E-64 inhibited the cell cleavage of early embryos both *in vivo* and *in vitro*, and they inhibited calcium-dependent neutral protease activity in homogenates of the embryos *in vitro*. Calpain-like protease activity increased after fertilization.

There is evidence suggesting that calpains and cysteine proteases degrade cell cycle-related proteins, and benzyl-oxy-carbonyl-Leu-Leu-Tyr diazomethyl ketone (ZLLY-DMK),

which is a relatively selective calpain inhibitor, has been found to inhibit the growth of human TE2 and C-33 cells (Mellgren, 1994). Moreover, exposure to ZLLY-DMK during the late G1 phase inhibits progression of the S phase of serum-stimulated WI-38 fibroblasts (Zhang, *et al.*, 1997; Mellgren, 1997). Since cleavage of p53 by a calpain was inhibited by ZLLY-DMK, the fibroblasts could not proceed from the G1 phase to the S phase (Zhang, *et al.*, 1997), suggesting that the activity of a calpain-like protease is responsible for the degradation of p53 observed during the late G1 phase.

With respect to the promotion of the M phase, E-64 has been reported to arrest the proliferation of human epidermoid carcinoma A431 cells during metaphase (Shoji-Kasai *et al.*, 1988). In addition, E-64 has prevented spindle formation during mouse meiotic maturation (Hashimoto, *et al.*, 1990), and microinjection of calpain into PtK1 cells during interphase has promoted the onset of the metaphase (Schollmeyer, 1988). Cyclins A and B promote the S and M phases, and degradation of these cyclins is required for cells to exit the M phase (Minshull *et al.*, 1989; Sherr, 1993 and 1996). When calcium was added to the cytosol of *Xenopus* embryos for an *in vitro* reaction of the degradation of cyclin B, degradation of cyclin B occurred in the reaction mixture (Funakoshi *et al.*, 1999). These findings indicate that cysteine proteases, including calpains, are important for the transition from the G1 phase to the S phase and for the progression of the M phases of the cell cycle (Zhang, *et al.*, 1997; GMellgren, 1997; Shoji-Kasai *et al.*, 1988; Hashimoto, *et al.*, 1990).

E-64, however, has also been reported to have no effect on intracellular calcium-activated neutral protease in rabbit erythrocytes (Hayashi *et al.*, 1991), and relatively high concentrations (50–400  $\mu\text{g/ml}$ ) of E-64 are needed in these experimental systems to exert the inhibitory effects on the cell cycle described above (Shoji-Kasai *et al.*, 1988; Hashimoto *et al.*, 1990; Mellgren *et al.*, 1997). Although we also observed that the inhibitory effect of E-64 *in vivo* and *in vitro* occurred at relatively high concentrations (400–800  $\mu\text{g/ml}$ ), a calpain-like protease may be responsible for processing the cell cycle in the early *Xenopus* embryo.

As the early embryonic cell cycle in *Xenopus* consists of only S and M phases and does not include the G 1 or G 2 phases (Newport and Kirschner, 1982a, b), arrest of the cell cycle of the *Xenopus* embryos by E-64 is unrelated to the inhibition of proteolysis at the G 1 S phase transition. The arrest of the cell cycle of the *Xenopus* embryo by E-64 may be related to the preservation or progression of the M phase, as reported previously in studies that used cultured cells (Shoji-Kasai *et al.*, 1988; Hashimoto, *et al.*, 1990).

## ACKNOWLEDGMENT

This work was supported in part by a grant from Nihon University to S. Miyata.

## REFERENCES

Azuma Y, Tokumoto T, Ishikawa K (1991) High molecular weight-

- multicatalytic proteinases in premature and mature oocytes of *Rana pipiens*. *Mol Cell Biochem* 100: 171–181
- Ciechanover A (1994) The ubiquitin-proteasome proteolytic pathway. *Cell* 79: 13–21
- Dunphy W G, Newport J W (1988) Unraveling of mitotic control mechanisms. *Cell* 55: 925–928
- Godsave SF, Slack JMW (1989) Clonal analysis of mesoderm induction in *Xenopus laevis*. *Dev Biol* 134: 486–490
- Gour-Salin BJ, Lachance P, Magny M-C, Plouffe C, Menard R, Storer AC (1994) E-64 [trans-epoxysuccinyl-L-leucylamid-(4-guanidino) butane] analogues as inhibitors of cysteine proteinases: investigation of S<sub>2</sub> subsite interactions. *Biochem J* 299: 389–392
- Funakoshi M, Geley S, Hunt T, Nishimoto T, Kobayashi H (1999) Identification of XDRP1; a *Xenopus* protein related to yeast Dsk2p binds to the N-terminus of cyclin A and inhibits its degradation. *EMBO J* 18: 5009–5018
- Han J-K, Fukami K, Nuccitelli R (1992) Reducing inositol lipid hydrolysis, Ins(1,4,5) P<sub>3</sub> receptor availability, or Ca<sup>2+</sup> gradients lengthens the duration of the cell cycle in *Xenopus laevis* blastomeres. *J Cell Biol* 116: 147–156
- Hashimoto N, Iwashita S, Shoji-Kasai Y, Kishimoto T, Imahori K (1990) Thiol protease inhibitor, E-64-d, prevents spindle formation during mouse oocyte maturation. *Develop Growth Differ* 32: 197–203
- Hayashi M, Inomata M, Saito Y, Ito H, Kawashima S (1991) Activation of intracellular calcium-activated neutral proteinase in erythrocytes and its inhibition by exogenously added inhibitors. *Biochim Biophys Acta* 1094: 249–256
- Hoyt MA (1997) Eliminating all obstacles: Regulated proteolysis in the eukaryotic cell cycle. *Cell* 91: 149–151
- Inomata M, Hayashi M, Nakamura M, Imahori K, Kawashima S (1983) Purification and characterization of a calcium-activated neutral protease from rabbit skeletal muscle which requires calcium ions of  $\mu$  M order concentration. *J Biochem* 93: 291–294
- Inomata M, Nomoto M, Hayashi M, Nakamura M, Imahori K, Kawashima S (1984) Comparison of low and high calcium requiring forms of the calcium-activated neutral protease (CANP) from rabbit skeletal muscle. *J Biochem* 95: 1661–1670
- King RW, Deshaies RJ, Peters J-M, Kirschner MW (1996) How proteolysis drives the cell cycle. *Science* 274: 1652–1659
- Mellgren RL (1997) Evidence for participation of a calpain-like cysteine protease in cell cycle progression through late G<sub>1</sub> phase. *Biochem Biophys Res Comm* 236: 555–558
- Mellgren RL, Shaw E, Mericle MT (1994) Inhibition of growth of human TE2 and C-33A cells by the cell-permeant calpain inhibitor benzyloxycarbonyl-Leu-Leu-Tyr diazomethyl ketone. *Exp Cell Res* 215: 164–171
- Minshull J, Pines J, Golsteyn R, Standart N, Mackie S, Colman A, Blow J, Ruslerman J, Wu M, Hunt T (1989) The role of cyclin synthesis, modification and destruction in the control of cell division. *J Cell Sci* 12: 77–97
- Miyata S, Kihara HK (1995) Cathepsin L-like protease from *Xenopus* embryos that is stimulated by nucleoside phosphates and nucleic acid. *Zool Scie* 12: 771–774
- Miyata S, Kubo T (1997) Inhibition of gastrulation in *Xenopus* embryos by an antibody against a cathepsin L-like protease. *Develop Growth Differ* 39: 111–115
- Newport J, Kirschner M (1982a) A major developmental transition in early *Xenopus* embryos: I. Characterization and timing of cellular changes at the midblastula stage. *Cell* 30: 675–686
- Newport J, Kirschner M (1982b) A major developmental transition in early *Xenopus* embryos: II. Control of the onset of transcription. *Cell* 30: 687–696
- Schollmeyer JE (1988) Calpain II involvement in mitosis. *Science* 240: 911–913
- Sherr CJ (1993) Mammalian G1 cyclins. *Cell* 73: 1059–1065
- Sherr CJ (1996) Cancer cell cycles. *Science* 247: 1672–1678
- Shoji-Kasai Y, Senshu M, Iwashita S, Imahori K (1988) Thiol protease-specific inhibitor E-64 arrests human epidermoid carcinoma A431 cells at mitotic metaphase. *Proc Natl Acad USA* 85: 146–150
- Sorimachi H, Ishiura S, Suzuki K (1997) Structure and physiological function of calpains. *Biochem J* 328: 721–732
- Stillman B (1996) Cell cycle control of DNA replication. *Science* 274: 1659–1664
- Tamai M, Matumoto K, Omura S, Koyama I, Ozawa Y, Hanada K (1986) *In vitro* and *in vivo* inhibition of cysteine proteinases by EST, a new analog of E-64. *J Pharmacobio-Dyn* 9: 672–677
- Tokumoto T, Ishikawa K (1993) A novel "Active" form of proteasomes from *Xenopus laevis* ovary cytosol. *Biochem Biophys Res Comm* 192: 1106–1114
- Zhang W, Lu Q, Xie Z-J, Mellgren RL (1997) Inhibition of the growth of WI-38 fibroblasts by benzyloxycarbonyl-Leu-Leu-Tyr diazomethyl ketone: evidence that cleavage of p53 by a calpain-like protease is necessary for G<sub>1</sub> to S-phase transition. *Oncogene* 14: 255–263

(Received June 9, 2000 / Accepted July 19, 2000)