

Reconsidering Zoanthus spp. Diversity: Molecular Evidence of Conspecificity Within Four Previously Presumed Species

Authors: Reimer, James Davis, Ono, Shusuke, Fujiwara, Yoshihiro, Takishita, Kiyotaka, and Tsukahara, Junzo

Source: Zoological Science, 21(5) : 517-525

Published By: Zoological Society of Japan

URL: <https://doi.org/10.2108/zsj.21.517>

The BioOne Digital Library (<https://bioone.org/>) provides worldwide distribution for more than 580 journals and eBooks from BioOne's community of over 150 nonprofit societies, research institutions, and university presses in the biological, ecological, and environmental sciences. The BioOne Digital Library encompasses the flagship aggregation BioOne Complete (<https://bioone.org/subscribe>), the BioOne Complete Archive (<https://bioone.org/archive>), and the BioOne eBooks program offerings ESA eBook Collection (<https://bioone.org/esa-ebooks>) and CSIRO Publishing BioSelect Collection (<https://bioone.org/csiro-ebooks>).

Your use of this PDF, the BioOne Digital Library, and all posted and associated content indicates your acceptance of BioOne's Terms of Use, available at www.bioone.org/terms-of-use.

Usage of BioOne Digital Library content is strictly limited to personal, educational, and non-commercial use. Commercial inquiries or rights and permissions requests should be directed to the individual publisher as copyright holder.

BioOne is an innovative nonprofit that sees sustainable scholarly publishing as an inherently collaborative enterprise connecting authors, nonprofit publishers, academic institutions, research libraries, and research funders in the common goal of maximizing access to critical research.

Reconsidering *Zoanthus* spp. Diversity: Molecular Evidence of Conspecificity Within Four Previously Presumed Species

James Davis Reimer^{1*}, Shusuke Ono², Yoshihiro Fujiwara³,
Kiyotaka Takishita³ and Junzo Tsukahara¹

¹Department of Developmental Biology, Faculty of Science, Kagoshima University,
Korimoto 1-21-35, Kagoshima, 890-0065, Japan

²Miyakonojo Higashi High School, Mimata, Miyazaki, 889-1996, Japan

³Marine Ecosystems Research Department, Japan Marine Science
and Technology Center, 2-15 Natsushima-cho, Yokosuka,
Kanagawa, 237-0061, Japan

ABSTRACT—We have conducted the first phylogenetic study to our knowledge of *Zoanthus* in the northern hemisphere by sequencing and analysing the mitochondrial cytochrome oxidase subunit 1 (COI) gene. Various unidentified *Zoanthus* specimens and samples of what have been assumed to be four discrete species (*Z. pacificus*, *Z. sansibaricus*, *Z. gnophodes*, *Z. erythrochloros*) were collected from four field sites in Kagoshima Prefecture, Japan. Based on our obtained COI gene sequences, all but one of our collected *Zoanthus* samples appear to be conspecific, with nearly 100.00% base pair matching. Genetic results are further backed up by collected polyp diameter, tentacle count, and mesentary count data. These results indicate a need to reconsider and re-analyze current *Zoanthus* classification and identification. Possible reasons for the large morphological variation in the same genotype in *Zoanthus* are also discussed.

Key words: *Zoanthus*, cytochrome oxidase subunit 1, morphotype, conspecific

INTRODUCTION

The zooxanthellate-encrusting anemone genus *Zoanthus* is worldwide in distribution, and is commonly found on rocky and hard substrates in tropical and sub-tropical waters, and especially in coral reef environments. Uchida and Soyama (2001) list 5 species of *Zoanthus* as occurring in Japanese waters; *Zoanthus sansibaricus* (Pax and Mueller, 1957), *Z. gnophodes* (ibid.), *Z. pacificus* (first described in Walsh and Bowers, 1971), *Z. erythrochloros* (Pax and Mueller, 1957), and *Z. vietnamensis* (ibid.). For a summary of *Z. pacificus*, *Z. sansibaricus*, *Z. gnophodes*, and *Z. erythrochloros*, refer to the summary of diagnostic characteristics in Table 1 and the color photographs in Fig. 1. Historically, *Zoanthus* diagnostic characters for identification purposes have been oral disk color, polyp diameter, tentacle count, and mesentary count (Pax and Mueller, 1957; Walsh and Bowers, 1971; Uchida and Soyama, 2001). However, the classification and identification of the entire genus is in chaos (Burnett *et al.*, 1995; Burnett *et al.*, 1997). Very little work has been done on identification to the species level,

although some work was done on *Zoanthus* species of the Great Barrier Reef and northern Australia, which found that “species” or discrete groups had considerable morphological variation (Burnett *et al.*, 1997). Fautin’s (2003) database includes 320 descriptions of Zoanthidea, but only 16 have proper species descriptions. Similarly, there were almost 120 species of *Zoanthus* listed in this database (last updated in July 2003), but how many of these are actually true “species” is unknown (Fautin, 2003).

At Sakurajima, Japan, alone, there exists over 20 different color variations of *Zoanthus* at one inter-tidal site (personal observation), including the five presumed *Zoanthus* species mentioned above. Whether these are separate species or simply color variations of the same species is unknown.

The cytochrome oxidase subunit 1 (COI) gene has been shown in previous literature to be an accurate species-level marker (Dawson and Jacobs, 2001; Erpenbeck *et al.*, 2002; Otranto *et al.*, 2003). We sequenced the COI gene from collected *Zoanthus* samples to investigate the following question.

Are the various morphological types of *Zoanthus* different species as described in previous literature (for example, Uchida and Soyama, 2001), or are they conspecific?

* Corresponding author: Tel. +81-99-285-8161;
FAX. +81-99-285-8029.
E-mail: zoanthid@hotmail.com

Table 1. Summary of *Zoanthus* species morphological characteristics in previous literature and this study.

<i>Zoanthus</i> Species	Pax & Mueller (1957)			Walsh & Bowers (1971)			Uchida & Soyama (2001)		this study		
	oral disk (polyp) diameter (mm)	tentacle count	mesentary count	oral disk (polyp) diameter (mm)	tentacle count	mesentary count	oral disk (polyp) diameter (mm)	tentacle count	oral disk (polyp) diameter (mm)	tentacle count	mesentary count
<i>Z. erythrochloros</i>	7	~60	54	NA	NA	NA	8	48~58	6~10	54	53
<i>Z. gnophodes</i>	6	NA	56	NA	NA	NA	8	~60	6~10	54~56	52~53
<i>Z. pacificus</i>	NA	NA	NA	7	60	60	6	54	6~10	54~58	52
<i>Z. sansibaricus</i>	NA	NA	NA	NA	NA	NA	7	56	6~10	54~56	52

NA = not available

MATERIALS AND METHODS

Sampling and DNA extraction, and PCR amplification

Samples of *Zoanthus* spp. (Table 2, Fig. 1) containing *Symbiodinium* spp. were collected from four field sites (Fig. 2) in Kagoshima Prefecture, Japan, in June~August 2003 and stored in 100% ethanol at -20°C . As samples were collected photographs were also taken to assist in identification and for collection of diagnostic character data (oral disk/polyp diameter and tentacle count) (Table 1, Fig. 1). The number of mesenteries of samples of the four presumed species *Z. pacificus*, *Z. sansibaricus*, *Z. gnophodes*, and *Z. erythrochloros* were counted from cross-sections (Table 1). During field sampling, *Palythoa* samples were collected from Amami and Yakushima field sites to provide outgroup sequences for the following phylogenetic analyses.

Usual *Zoanthus* tissue has a large number of ZX, and this makes it difficult to obtain uncontaminated *Zoanthus* DNA (personal observation, and see Maier *et al.*, 2001 for a review of such problems). However, polyps contained zooxanthellae (ZX)-free gametes. ZX-free gametes were carefully removed from sample polyps using a dissecting microscope, and immediately processed.

A total of 29 samples were analyzed. ZX-free gamete samples weighed 0.4~1.8 mg. DNA was extracted from the samples using a spin-column DNeasy Animal DNA Extraction protocol (Qiagen, Santa Clarita, CA, USA) (LaJeunesse and Trench, 2000).

The primers used were the universal primers HCO2198 5'-TAAACTTCAGGGTGACCAAAAAATCA-3' and LCO1490 5'-TAAACTTCAGGGTGACCAAAAAATCA-3' (Folmer *et al.*, 1994).

PCR amplification was performed on the samples under the following conditions: an initial denaturing step at 95.0°C for 1 minute, followed by 35 cycles of 1 minute denature at 95.0°C , 1 minute annealing at 40.0°C , and 90 s extension at 72.0°C , followed by 7 minutes' extension at 72.0°C .

Sequence Analysis:

Cycle sequencing was accomplished in both directions using the forward and reverse primers separately. Reagents and reaction conditions were as specified in the ABI Prism Big Dye Terminator Cycle Sequencing ready reaction kit (PE Applied Biosystems, Foster City, CA, USA). Reaction products were analyzed on an Applied Biosystems 310 genetic analyzer (Division of Perkin Elmer, Foster City, CA, USA). The sequences were analyzed by DNASIS Mac v3.6 (Hitachi Software Engineering Company, Ltd., Tokyo, Japan).

By using CLUSTAL X v 1.8 (Thompson *et al.*, 1997), the nucleotide sequences from *Zoanthus* taxa obtained in this study were aligned with those from other related species that were retrieved from GenBank. The alignment data are available on request from the corresponding author. A distance tree was constructed using the neighbor-joining (NJ) method (Saitou and Nei, 1987) with Clust-

alX. Bootstrap values were obtained for 1000 replicates of dataset to assess relative branch support.

RESULTS

Morphological diagnostic character data

Obtained diagnostic character data for the four presumed species *Z. pacificus*, *Z. sansibaricus*, *Z. gnophodes*, and *Z. erythrochloros* are shown in Table 1, along with previous results from other studies. For all four presumed species there was overlap in polyp diameter (6~10 mm), tentacle count (54~58), and mesentary count (52~53), despite showing small variation between individual polyps. *Z. pacificus*, *Z. sansibaricus*, *Z. gnophodes*, and *Z. erythrochloros* morphological diagnostic character data overlapped with previous literature's data (Table 1). Wide variation was seen in oral disk color in all 29 sequenced samples (Table 2), while there was less variation in tentacle count (54~58) (data not shown), and oral disk/polyp diameter data (4~12 mm) (Table 2).

All *Zoanthus* samples were from clonal interconnected colonies except for Amami *Zoanthus* 4, which was found in small groups with individual polyps separated (Fig. 1e). It should be noted that polyp diameter (8 mm) and tentacle count (54) of Amami *Zoanthus* 4 are within the range of the other *Zoanthus* samples, however (Table 1, Table 2).

Zoanthus COI sequences

The alignment of our obtained sequences is shown in Fig. 3. The six different sequences were submitted to GenBank (Ascension Numbers AB128893 to AB128898). The phylogenetic tree based on the COI gene sequences is shown in Fig. 4.

All of our *Zoanthus* samples excepting Amami *Zoanthus* 4 (Fig. 1e) were found to be almost identical in their COI sequences (Figs. 3 and 4). In fact, all of the *Zoanthus* sample sequences were 100.00% identical over the 649 base pair length of the COI gene (designated "Zoanthus" in Fig. 3), excepting Sakurajima *Zoanthus* 1 (3 base pairs, or 0.46% different relative to the COI sequence "Zoanthus") and Sakurajima *Zoanthus* 9, which differed by four base

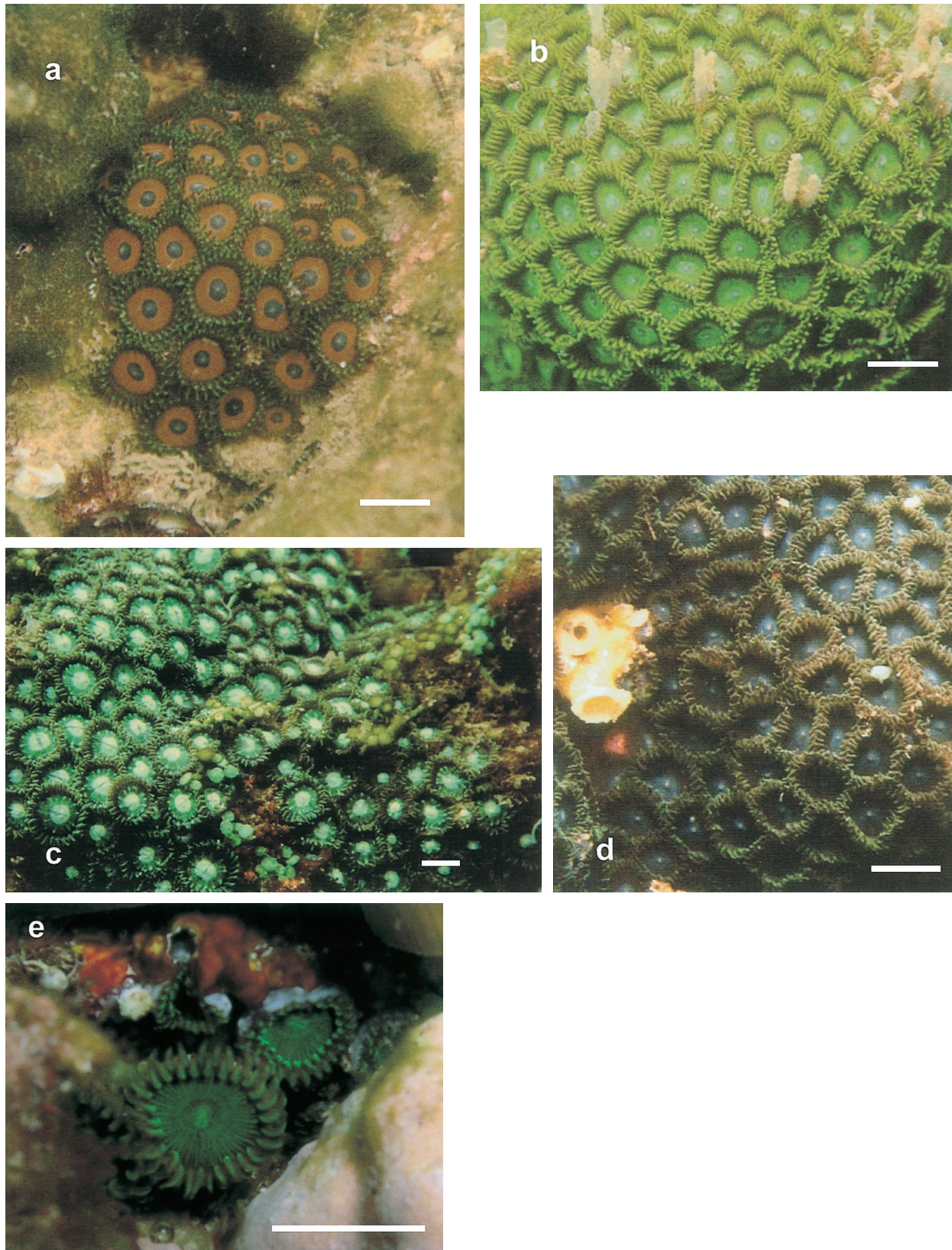


Fig. 1. Photographs of presumed species samples. All samples shown were collected from field sites in summer 2003. a) *Zoanthus erythrochloros*, b) *Z. gnophodes*, c) *Z. pacificus*, d) *Z. sansibaricus*, e) Amami *Zoanthus* 4. Please note that *Z. pacificus* was sampled from all four field sites. Diagnostic characters for identification visible in these photographs are oral disk color, polyp diameter, and tentacle number. White bar scale = 1 cm.

Table 2. List of collected samples with coloration, oral disk diameter, depth, and cytochrome oxidase subunit 1 (COI) sequence type.

Site ♣	Sample #	Disk Color	Tentacle Color	Disk Diameter (mm)	Depth (m)	COI type
K	Kokubu <i>Z. pacificus</i> 1 and 2	bright green	bright green	6~ 8	-2	Zoanthus
S	Sak <i>Z. pacificus</i>	bright green	bright green, brown	6~10	-2	Zoanthus
Y	Yaku <i>Z. pacificus</i> 1 and 2	bright green	bright green	6~10	+1	Zoanthus
A	Amami <i>Z. pacificus</i> 1 and 2	bright green	bright green	6~10	+0.5	Zoanthus
S	Sak <i>Zoanthus</i> 1	green-brown	green	6~10	-3	SakZoan1
S	Sak <i>Zoanthus</i> 2	green-brown	green	6~10	-3	Zoanthus
S	Sak <i>Z. erythrochloros</i> 1 and 2	red, blue, w/ white center dot	red-brown	6~10	-3	Zoanthus
S	Sak <i>Zoanthus</i> 3	yellow	green	6~10	-3	Zoanthus
S	Sak <i>Zoanthus</i> 4	yellow	green	6~10	-3	Zoanthus
S	Sak <i>Zoanthus</i> 5	red w/ white center dot	green or purple	6~10	-3	Zoanthus
S	Sak <i>Z. gnophodes</i>	green, blue	bright green	6~10	-3	Zoanthus
S	Sak <i>Zoanthus</i> 6	yellow	brown	6~10	-3	Zoanthus
S	Sak <i>Zoanthus</i> 7	white	purple	6~10	-3	Zoanthus
S	Sak <i>Z. sansibaricus</i>	purple w/ lighter center	purple	6~10	-3	Zoanthus
S	Sak <i>Zoanthus</i> 8	white	green	6~10	-3	Zoanthus
S	Sak <i>Zoanthus</i> 9	green	green	6~10	-3	SakZoan9
Y	Yaku <i>Zoanthus</i> 1	green w/ bright green center	purple	6~ 8	+1.5	Zoanthus
Y	Yaku <i>Zoanthus</i> 2	white, green w/ bright green dots and center, octagonal	red-brown, feathery	8~12	-1	Zoanthus
Y	Yaku <i>Palythoa</i>	brown	brown	10~20	+1.5	YakuPaly
Y	Yaku <i>Zoanthus</i> 5	purple w/ white center	blue-gray, feathery	8~12	-1	Zoanthus
A	Amami <i>Palythoa</i>	green	brown	10~20	+2	AmamiPaly
A	Amami <i>Zoanthus</i> 1	red, blue, w/ white center dot	green	4~ 6	0	Zoanthus
A	Amami <i>Zoanthus</i> 2	purple w/ white center dot	purple	4~ 8	+0.5	Zoanthus
A	Amami <i>Zoanthus</i> 4	bright green, polyps not clonal	green	6~10	+1	AmamiZoan4
A	Amami <i>Zoanthus</i> 5	pink	purple	4~ 8	+2	Zoanthus

♣ - Abbreviations: K=Kokubu, S=Sakurajima, Y=Yakushima, and A=Amami.

Depth is in meters relative to extreme low tide (thus “-” values are lower than the extreme low tide line, and “+” values above the extreme low tide line).

pairs (0.61%) from the “Zoanthus” sequence. Based on these results, it can be concluded that these samples are most likely intraspecific, despite their differing morphotypes. Presumed *Z. pacificus* sample COI sequences obtained from all 4 sites were 100.00% identical.

Amami *Zoanthus* 4’s sequence was different by 7 base pairs (1.07%) from the “Zoanthus” sequence, which indicates Amami *Zoanthus* 4 may be of a different species.

Palythoa tuberculosa sequences were shown to be 24 to 25 base pairs (3.69%~3.85%) different from obtained

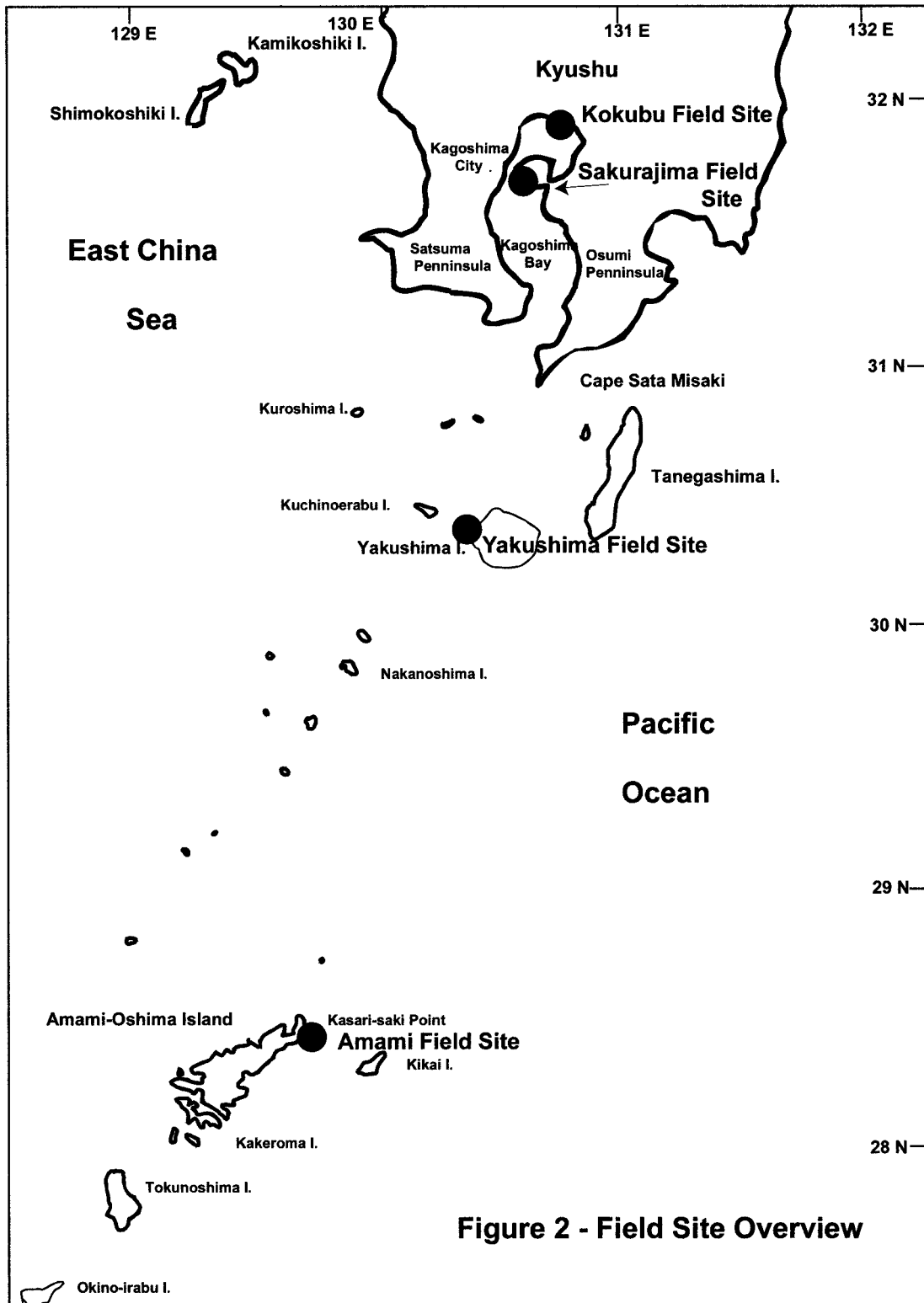


Fig. 2. Map of field sites. The distance from the northernmost site at Kokubu to the southernmost site at Amami is approximately 400 km, and spans from temperate inland waters in the north to sub-tropical coral reefs on the open ocean at Amami.

Zoanthus sequences. The two sampled *Palythoa* (green oral disk from Amami and brown oral disk from Yakushima) differed by two base pairs from each other, indicating a relationship within the species level.

DISCUSSION

DNA sequencing was performed on the mitochondrial cytochrome c oxidase 1 (COI) subunit gene. The COI gene

	1	11	21	31	41	51	61	71
Zoanthus	TCTAGTATTT	GGTATTGGGG	CCGGTATGAC	AGGAACAGTT	TTTAGTATGT	TGATAAGGTT	AGAACTTTCT	GCCCCCGGAA
AmamiZoan4CC
SakZoan1AGC
SakZoan9CCC
AmamiPalyAGGTCC
YakuPalyAGGTCC
	81	91	101	111	121	131	141	151
Zoanthus	CTATGTTGGG	GGACGACCAT	CTTTATAAATG	TAATCGTGAC	TGCGCATGCC	TTTATTATGA	TCTTTTTCCT	GGTGATGCCG
AmamiZoan4T
SakZoan1
SakZoan9G
AmamiPalyG
YakuPalyG
	161	171	181	191	201	211	221	231
Zoanthus	GTGATGATAG	GGGGGTTTGG	AAATTGGTTA	GTGCCGCTAT	ATATTGGTGC	ACCAGATATG	GCCTTCCCGC	GACTAAATAA
AmamiZoan4
SakZoan1
SakZoan9
AmamiPalyGGC
YakuPalyGGC
	241	251	261	271	281	291	301	311
Zoanthus	CATTAGTTTC	TGGCTCTTGC	CTCCGCCCTT	AATTCTATTG	TTGGTTCCG	CCTTTGTGGA	ACAGGGAGTA	GGAACAGGTT
AmamiZoan4CG
SakZoan1
SakZoan9
AmamiPalyCGC
YakuPalyCGC
	321	331	341	351	361	371	381	391
Zoanthus	GGACGGTATA	TCCGCCCTT	TCAAGCATTG	AAGCTCATTG	GGGGGGGGCC	GTGGACATGG	CTATATTAG	CCTTCACTTG
AmamiZoan4G
SakZoan1
SakZoan9
AmamiPalyGGCC
YakuPalyGGCC
	401	411	421	431	441	451	461	471
Zoanthus	GCCGGGGTCT	CTTCCATCTT	AGGGGCTATG	AATTTTATCA	CCACTATATT	AAATATGAGG	GCCCCGGGTA	TGACAATGGA
AmamiZoan4
SakZoan1
SakZoan9
AmamiPalyT
YakuPalyT
	481	491	501	511	521	531	541	551
Zoanthus	TAGATTGCCA	CTATTTGTAT	GGTCTATCTT	AATCACCGCC	TTCCTATTGT	TACTGTCTTT	GCCCCGATTG	GCTGGGGCCA
AmamiZoan4T
SakZoan1
SakZoan9
AmamiPalyGTC
YakuPalyGTC
	561	571	581	591	601	611	621	631
Zoanthus	TAACCATGTT	GTTGACAGAT	AGGAATTTTA	ACACTACTTT	CTTTGACCCC	GCTGGAGGGG	GGGACCCGAT	TCTGTTTCAA
AmamiZoan4
SakZoan1
SakZoan9
AmamiPalyCC
YakuPalyCC
	641							
Zoanthus	CATCTCTTT							
AmamiZoan4							
SakZoan1							
SakZoan9							
AmamiPaly							
YakuPaly							

Fig. 3. Mitochondrial cytochrome oxidase subunit 1 gene sequence alignment of *Zoanthus* and *Palythoa* samples. The sequences are 649 base pairs long.

has been shown to be an adequate species-level marker (Dawson and Jacobs, 2001; Erpenbeck *et al.*, 2002; Otranto *et al.*, 2003). While investigating *Aurelia* (Cnidaria, Scyphozoa), Dawson and Jacobs (2001) suggested a 10% to 20%

sequence difference as the benchmark of distinct species, based on their results and an examination of previous literature. In warble flies (Oestridae) Otranto *et al.* (2003) found intraspecific pairwise differences between 0.14%~1.59%,

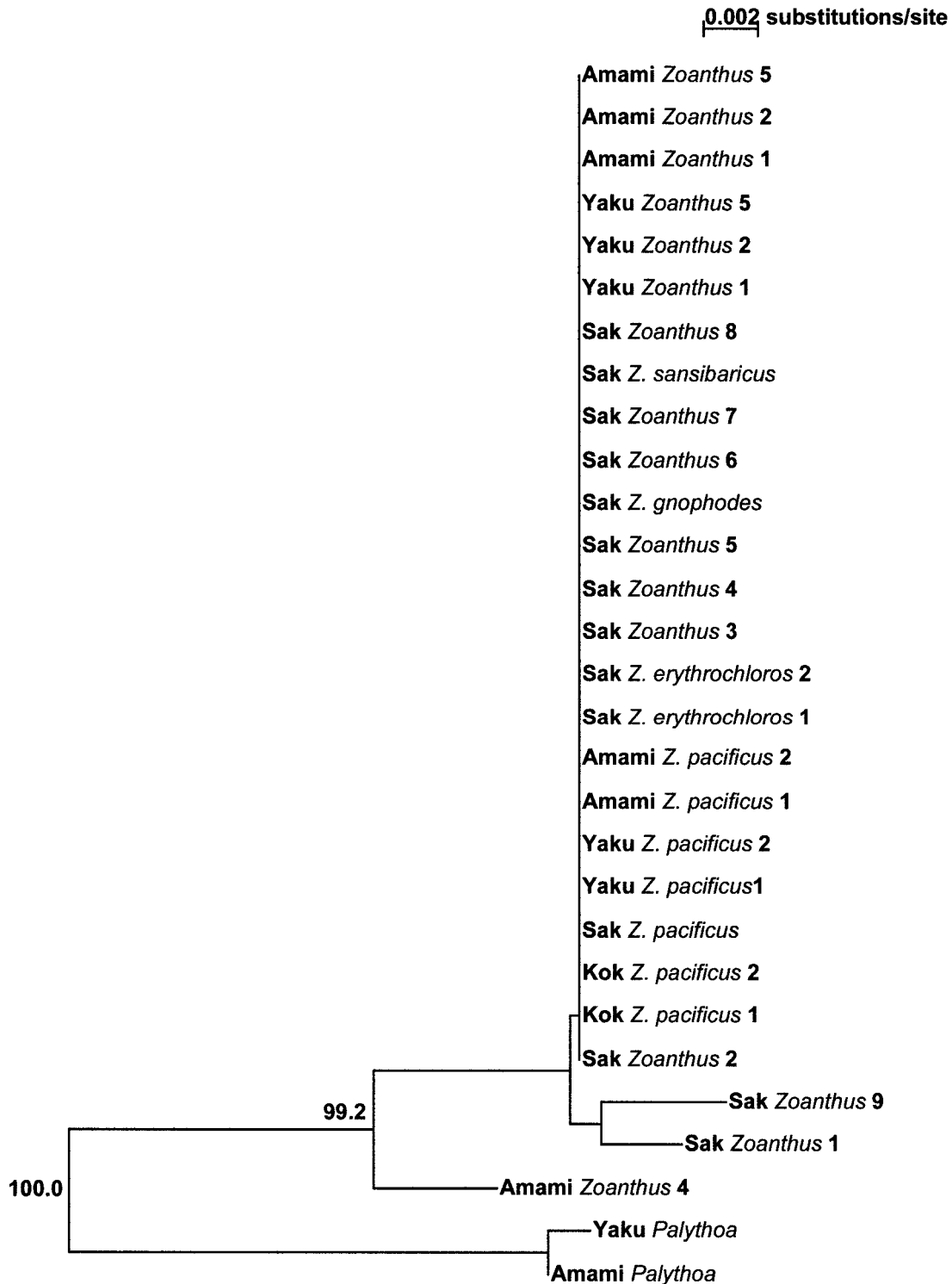


Fig. 4. Phylogenetic analysis of the COI gene sequences from collected samples. *Palythoa* species were used to root the tree. Numbers at the nodes refer to percentage of bootstrap support.

while interspecific differences were 0.7%~27%. While Dawson and Jacobs' (2001) benchmark value is much higher than the value calculated by Otranto *et al.* (2003), both Knowlton (2000) and Romano and Palumbi (1997) do mention that molecular evolution in cnidarians appears to be slower than in most other taxa. Supporting this hypothesis,

France and Hoover (2002) found divergence levels in COI sequences among deep-sea octocorals were lower (0.4%~10.3%) than expected.

From our present results, regardless of which COI species benchmark is used it is clear that all four sites harbor the same species of *Zoanthus*, despite morphological varia-

tion in oral disk color between samples. Variation in other diagnostic characters, such as polyp diameter, tentacle count, and mesentary count is much less pronounced and shows overlap in data ranges.

Only whether Amami *Zoanthus* 4 is a distinct and separate species or not is open to speculation, as the difference of 1.07% in its COI sequence lies in the overlapping range between intra- and interspecific values. Morphologically Amami *Zoanthus* 4 showed slight differences as well, as polyps were found to be individual and not clonal unlike all other samples sequenced. Sequencing of different genes and further investigation may help clarify the classification of this sample.

Zoanthus larvae are thought to be able to live for long periods; a minimum of ~3 weeks (Burnett *et al.*, 1995) up to several weeks before settling (Ryland, 1997) which could explain how similar genotypes could be distributed over such a wide range. The persistence of clonal genotypes and the amount of energy directed into asexual reproduction (i.e. rapid budding and changes in colony size etc.) as opposed to sexual reproduction may also contribute to similar genotypes being widespread (Ryland, 1997).

Previous literature dealing with classification and identification of *Zoanthus* species has been scarce, but literature up to now has identified 5 species of *Zoanthus* (*Z. vietnamensis*, *Z. sansibaricus*, *Z. gnophodes*, *Z. erythrochloros*, *Z. pacificus*) living in Japanese waters (Uchida and Soyama, 2001). While we collected *Z. vietnamensis* samples, we were unable to perform successful sequencing of these samples. However, the other four previously identified species samples, as well as other *Zoanthus* morphotypes collected appear to be conspecific genetically and morphologically, excepting oral disk color. Similar results were reported by Burnett *et al.* (1997) in Australia, who found that *Zoanthus* samples of various color morphotypes (excepting *Z. vietnamensis*) were all most likely conspecific, based on allozyme electrophoretic analyses of fourteen allozyme loci coding for eleven different enzymes. However, their study did not investigate the COI gene, so it is impossible to speculate on whether our *Zoanthus* and the studied Australian *Zoanthus* are conspecific or not.

What is clear is that current *Zoanthus* classification is in need of serious revision and review. The number of *Zoanthus* species worldwide, estimated at 120 (Fautin, 2003), may be far lower if our results are any indication.

On the other hand, if these various color morphotypes are not separate species, what accounts for their seeming morphological plasticity in oral disk color? Unlike other organisms, it appears that host tissue color is controlled in Anthozoa (including *Zoanthus*) solely by the green fluorescent protein (GFP) gene (Kelmanson and Matz, 2003). Kelmanson and Matz (2003) have shown that phenotypic plasticity in the great star coral *Montastraea cavernosa* exists in color variation. They suggest that several different loci on the (GFP) gene code for three different colors that are expressed in varying degrees, resulting in color morphs

(Kelmanson and Matz, 2003). Thus, despite possessing identical GFP genotypes, color morphotypes exist in nature due to differing GFP expression. Such color variation appears to have evolved independently in several different classes of Anthozoans (Labas *et al.*, 2002). This may be the case with *Zoanthus*, and investigating GFP genotypes in our samples is the next logical step in investigating the mechanism of oral disk color variation in *Zoanthus*. The underlying reason for such variation in color expression is not yet understood, although this may be related to the environment (depth, lighting, etc.). Further data collection is necessary.

In other work currently being conducted, it appears that *Zoanthus* colonies at the four study sites in this study harbor *Symbiodinium* zooxanthellae of different clades (Reimer *et al.*, unpublished data). Thus, the *Zoanthus-Symbiodinium* "holotype" may be genetically and physiologically different from site to site despite the host *Zoanthus* being genetically identical, allowing this symbiosis to adapt to a variety of environments.

ACKNOWLEDGEMENTS

The authors would like to express their gratitude and thanks to Professor Masao Sakai for his comments and software help throughout the course of this study. At the Japan Marine Science and Technology Center (JAMSTEC) in Yokosuka Dr. Tadashi Maruyama graciously provided helpful comments in helping with this study. In the JAMSTEC lab, Masaru Kawato gave invaluable and gracious guidance. Mika Wada and Denny Probizanski assisted with the field studies. This research was in part funded by a Ministry of Education scholarship.

REFERENCES

- Burnett WJ, Benzie JAH, Beardmore JA, Ryland JS (1995) Patterns of genetic subdivision in populations of a clonal cnidarian, *Zoanthus coppingeri*, from the Great Barrier Reef. *Mar Biol* 122: 665–673
- Burnett WJ, Benzie JAH, Beardmore JA, Ryland JS (1997) Zoanthids (Anthozoa, Hexacorallia) from the Great Barrier Reef and Torres Strait, Australia: systematics, evolution and a key to species. *Coral Reefs* 16: 55–68
- Dawson MN, Jacobs DK (2001) Molecular Evidence for Cryptic Species of *Aurelia aurita* (Cnidaria, Scyphozoa). *Biol Bull* 200: 92–96
- Erpenbeck D, Breeuwer JAJ, van der Velde HC, van Soest RWM (2002) Unravelling host and symbiont phylogenies of halichondrid sponges (Demospongiae, Porifera) using a mitochondrial marker. *Mar Biol* 141: 377–386
- Fautin DG (2003) Hexacorallians of the World. <http://hercules.kgs.ku.edu/hexacoral/anemone2/index.cfm>
- Folmer O, Black M, Hoeh W, Lutz R, Vrijenhoek R (1994) DNA primers for amplification of mitochondrial cytochrome c oxidase subunit I from diverse metazoan invertebrates. *Mol Mar Biol Biotechnol* 3: 294–299
- France SC, Hoover LL (2002) DNA sequences of the mitochondrial COI gene have low levels of divergence among deep-sea octocorals (Cnidaria: Anthozoa). *Hydrobiologia* 471: 149–155
- Kelmanson IV, Matz MV (2003) Molecular Basis and Evolutionary Origins of Color Diversity in Great Star Coral *Montastraea cavernosa* (Scleractinia: Faviida). *Mol Mar Biol Evol* 20 (7): 1125–1133

- Knowlton N (2000) Molecular genetic analyses of species boundaries in the sea. *Hydrobiologia* 420: 73–90
- Labas YA, Gurskaya NG, Yanushevich YG, Fradkov AF, Lukyanov KA, Lukyanov SA, Matz MV (2002) Diversity and evolution of the green fluorescent protein family. *Proc Natl Acad Sci USA* 99: 4256–4261
- LaJeunesse TC, Trench RK (2000) The biogeography of two species of *Symbiodinium* (Freudenthal) inhabiting the intertidal anemone *Anthopleura elegantissima* (Brandt). *Biol Bull* 199: 126–134
- Maier E, Tollrian R, Nurnberger B (2001) Development of species-specific markers in an organism with endosymbionts: microsatellites in the scleractinian coral *Seriatopora hystrix*. *Mol Ecol Notes* 1: 157–159
- Otranto D, Traversa D, Guida B, Tarsitano E, Fiorente P, Stevens JR (2003) Molecular characterization of the mitochondrial cytochrome oxidase I gene of Oestridae species causing obligate myiasis. *Med Vet Entomol* 17: 307–315
- Pax F, Mueller I (1957) Zoantharien aus Viet-Nam. *Memoires du Museum National d'Histoire Naturelle* 16 Serie A, Zoologie: 1–40
- Romano SL, Palumbi SR (1997) Molecular evolution of a portion of the mitochondrial 16S ribosomal gene region in scleractinian corals. *J Mol Evol* 45: 397–411
- Ryland JS (1997) Reproduction in Zoanthidea (Anthozoa: Hexacorallia). *Invert Reprod Devel* 31: 177–188
- Saitou N, Nei M (1987) The neighbor-joining method: a new method for reconstructing phylogenetic trees. *Mol Biol Evol* 4: 406–425
- Thompson JD, Gibson TJ, Plewniak F, Jeanmougin F, Higgins DG (1997) The ClustalX windows interface: flexible strategies for multiple sequence alignment aided by quality analysis tools. *Nucleic Acids Res* 25: 4876–4882
- Uchida H, Soyama I (2001) *Sea Anemones in Japanese Waters*. TBS Britannica, Tokyo, p 124
- Walsh GE, Bowers RL (1971) A review of Hawaiian Zoanthids with descriptions of three new species. *Zool J Linn Soc* 50: 161–180

(Received December 17, 2003 / Accepted January 16, 2004)