



## **Coastal Ecosystems of the World: An Illustrated Reference of Biophysical Environments, Coastal Belts, and Marine-Terrestrial Ecological Zones**

Authors: Finkl, Charles W., and Makowski, Christopher

Source: Journal of Coastal Research, 100(sp1)

Published By: Coastal Education and Research Foundation

URL: <https://doi.org/10.2112/1551-5036-100.sp1.fmi>

---

BioOne Complete ([complete.BioOne.org](https://complete.BioOne.org)) is a full-text database of 200 subscribed and open-access titles in the biological, ecological, and environmental sciences published by nonprofit societies, associations, museums, institutions, and presses.

Your use of this PDF, the BioOne Complete website, and all posted and associated content indicates your acceptance of BioOne's Terms of Use, available at [www.bioone.org/terms-of-use](https://www.bioone.org/terms-of-use).

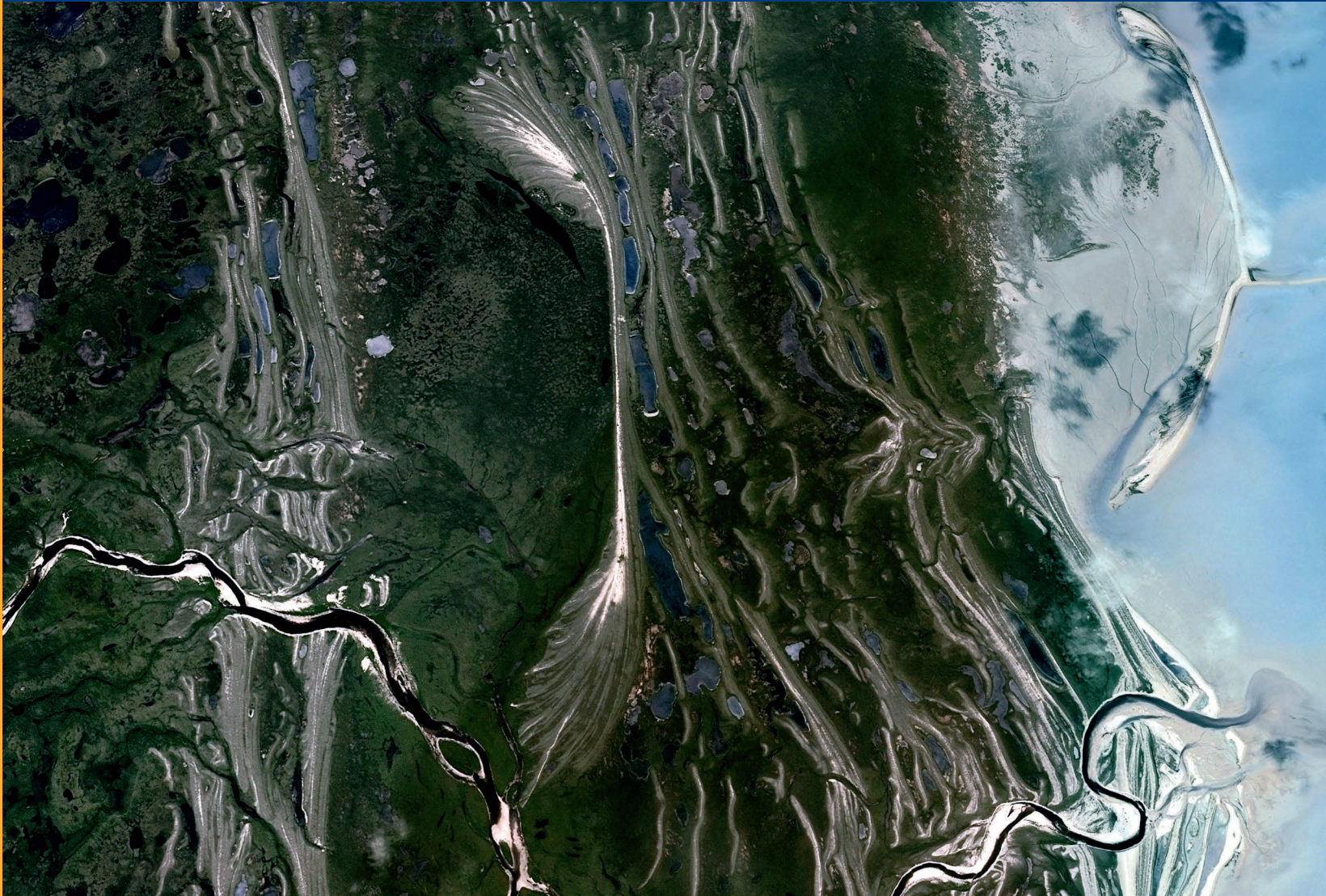
Usage of BioOne Complete content is strictly limited to personal, educational, and non - commercial use. Commercial inquiries or rights and permissions requests should be directed to the individual publisher as copyright holder.

---

BioOne sees sustainable scholarly publishing as an inherently collaborative enterprise connecting authors, nonprofit publishers, academic institutions, research libraries, and research funders in the common goal of maximizing access to critical research.

# Coastal Ecosystems of the World: An Illustrated Reference of Biophysical Environments, Coastal Belts, and Marine-Terrestrial Ecological Zones

Charles W. Finkl and Christopher Makowski



Journal of  
**Coastal Research**  
Special Issue #100 , Volume I

*An International Forum for the Littoral Sciences*  
**Christopher Makowski, Ph.D.**  
Editor-in-Chief



Official Publisher



# JOURNAL OF COASTAL RESEARCH

## An International Forum for the Littoral Sciences

CHEF-HERAUSGEBER

EDITOR-IN-CHIEF

RÉDACTEUR-EN-CHEF

**Christopher Makowski, Ph.D.**

Coastal Education and Research Foundation, Inc. (CERF)

Editorial Offices:

7570 NW 47th Avenue  
Coconut Creek, FL  
33073, U.S.A.

(Business Office, Coconut Creek)  
Website: [www.CERF-JCR.org](http://www.CERF-JCR.org)  
E-mail: [cmakowski@cerf-jcr.com](mailto:cmakowski@cerf-jcr.com)

313 S. Braeside Court  
Asheville, NC  
28803, U.S.A.

**EDITOR-IN-CHIEF EMERITUS**

Charles W. Finkl  
Coastal Education and Research  
Foundation, Inc. (CERF)  
313 S. Braeside Court  
Asheville, NC 28803, U.S.A.  
[cfinkl@cerf-jcr.com](mailto:cfinkl@cerf-jcr.com)

**EDITORIAL ASSISTANT**

Barbara Russell  
Coastal Education and Research  
Foundation, Inc. (CERF)  
7570 NW 47th Avenue  
Coconut Creek, FL 33073, U.S.A.  
[barbara@cerf-jcr.com](mailto:barbara@cerf-jcr.com)

**BOOK REVIEW EDITOR**

Luciana S. Esteves  
Faculty of Science and Technology  
Bournemouth University  
Dorset, England, U.K.  
[lesteves@bournemouth.ac.uk](mailto:lesteves@bournemouth.ac.uk)

**WEB DESIGN & DEVELOPMENT**

Jon Finkl  
Media Mine  
17600 River Ford Drive  
Davidson, NC 28036, U.S.A.  
[jon@mediamine.net](mailto:jon@mediamine.net)

**MITHERAUSGEBER**

**Edward J. Anthony**  
*Coastal Geomorphology*  
Dunkerque, France

**Patrick Barnard**  
*Coastal Geomorphology*  
Santa Cruz, California

**Natalia Bugajny**  
*Coastal Geomorphology*  
Szczecin, Poland

**M. Paula Bunicontro**  
*Coastal Geomorphology*  
Buenos Aires, Argentina

**David M. Bush**  
*Coastal Geology & Hazards*  
Carrollton, Georgia

**Ilya V. Buynevich**  
*Coastal Geology*  
Philadelphia, Pennsylvania

**Javier A. Carrió**  
*Sediment Processes*  
Valencia, Spain

**Insik Chun**  
*Coastal Engineering*  
Seoul, Republic of Korea

**Vanda Claudino-Sales**  
*Coastal Dynamics, Dunes*  
Ceard, Brazil

**Mark Crowell**  
*Coastal Zone Management*  
McLean, Virginia

**Omar Defeo**  
*Sandy Beach Ecology*  
Montevideo, Uruguay

**Joseph F. Donoghue**  
*Coastal Morphology & Hazards*  
Orlando, Florida

**Jean Ellis**  
*Aeolian Sediment Transport*  
Columbia, South Carolina

**Hany Elwany**  
*Coastal Engineering,*  
*Oceanography*  
La Jolla, California

**Luciana Esteves**  
*Coastal Flooding & Erosion*  
Bournemouth, England, UK

**Niki Evelpidou**  
*Sea-Level Change,*  
*Palaeogeography*  
Athens, Greece

**Oscar Manuel Ferreira**  
*Storm Impacts*  
Faro, Portugal

**Duncan M. FitzGerald**  
*Sediment Transport*  
Boston, Massachusetts

**Kazimierz K. Furmańczyk**  
*Marine Cartography*  
Szczecin, Poland

**Allen Gontz**  
*Geophysics, Stratigraphy*  
San Diego, California

**Gary B. Griggs**  
*Coastal Engineering & Hazards*  
Santa Cruz, California

**Pramod Hanamgond**  
*Coastal Geomorphology*  
Belgaum, India

**Hans Hanson**  
*Coastal Protection*  
Lund, Sweden

**Simon Haslett**  
*Paleoceanography*  
Swansea, Wales, UK

**Michael Hilton**  
*Dune Geomorphology & Ecology*  
Dunedin, New Zealand

**James R. Houston**  
*Sea-Level Change*  
Vicksburg, Mississippi

**Wenrui Huang**  
*Coastal Hydrodynamics*  
Tallahassee, Florida

**Federico I. Isla**  
*Sea-Level Change*  
Mar Del Plata, Argentina

**Nancy L. Jackson**  
*Coastal Geomorphology*  
Newark, New Jersey

**Markes E. Johnson**  
*Paleoshores, Coastal Sand Dunes*  
Williamstown, Massachusetts

**Timothy Kana**  
*Coastal Science & Engineering*  
Columbia, South Carolina

**Dieter H. Kelletat**  
*Coastal Geomorphology*  
Essen / Cologne, Germany

**Joseph T. Kelley**  
*Sea-Level Change*  
Orono, Maine

**Björn Kjerfve**  
*Physical Oceanography, Wetlands*  
College Station, Texas

**Nobuhisa Kobayashi**  
*Coastal Engineering*  
Newark, Delaware

**ASSOCIATE EDITORS**

**Vladimir N. Kosmynin**  
*Coral Reefs, Coastal Ecology*  
Tallahassee, Florida

**Michael J. Lace**  
*Coastal Landforms & Processes*  
West Branch, Iowa

**Stephen P. Leatherman**  
*Barrier Islands, Beach Erosion*  
Miami, Florida

**Jay Jooyong Lee**  
*Rip Currents, Coastal Hazards*  
Busan, Republic of Korea

**Charles Lemckert**  
*Environmental Fluid Dynamics*  
Bruce, ACT, Australia

**Hak Soo Lim**  
*Hydrodynamics, Coastal Engineering*  
Busan, Republic of Korea

**Ioannis Liritzis**  
*Geophysical Proxy Data,*  
*Archaeometry*  
Rhodes, Greece

**J. Paul Liu**  
*Sea-Level Change, Deltas*  
Raleigh, North Carolina

**Joshua H. Long**  
*Sediments, Marine Geology*  
Reston, Virginia

**Serena Lucrezi**  
*Coastal Tourism, Marine Ecology*  
Potchefstroom, South Africa

**Michel M. de Mahiques**  
*Sediment Processes*  
São Paulo, Brazil

**Gonzalo C. Malvárez**  
*Beach Morphodynamics*  
Seville, Spain

**Nobuo Mimura**  
*Environmental Engineering*  
Ibaraki, Japan

**Norberto C. Nadal-Caraballo**  
*Coastal Hazards*  
Vicksburg, Mississippi

**Fatima Navas**  
*Coastal Morphodynamics*  
Seville, Spain

**Robert Nicholls**  
*Global Climate Change*  
Southampton, England, UK

**Julian Orford**  
*Gravel Beaches, Storm Events*  
Belfast, Northern Ireland, UK

**Phil D. Osborne**  
*Sediment Dynamics*  
Vancouver, BC, Canada

**Hugh Parker**  
*Airborne Lidar Bathymetry*  
Adelaide, SA, Australia

**Kiki Patsch**  
*Coastal Geomorphology*  
Camarillo, California

**Charitha B. Pattiaratchi**  
*Physical Oceanography*  
Crawley, WA, Australia

**Carlos Pereira da Silva**  
*Coastal Zone Management*  
Lisbon, Portugal

**Michael Phillips**  
*Coastal Geomorphology*  
Doha, Qatar

**Orrin H. Pilkey, Jr.**  
*Coastal Geology*  
Durham, North Carolina

**Nobert P. Psuty**  
*Coastal Geomorphology*  
New Brunswick, New Jersey

**Elijah W. Ramsey, III**  
*Coastal Image Processing*  
Lafayette, Louisiana

**Tiffany Roberts Briggs**  
*Coastal Geomorphology*  
Boca Raton, Florida

**Kirt Rusenko**  
*Sea Turtles, Dune Restoration*  
Hampstead, North Carolina

**Daniele Scarponi**  
*Marine Paleocology*  
Bologna, Italy

**Anja Scheffers**  
*Coastal Hazards,*  
*Palaeoclimatology*  
Lismore, NSW, Australia

**Vic Semeniuk**  
*Mangroves*  
Perth, WA, Australia

**Douglas J. Sherman**  
*Coastal & Aeolian Geomorphology*  
Tuscaloosa, Alabama

**Andrew D. Short**  
*Coastal Geomorphology*  
Sydney, NSW, Australia

**Pravi Shrestha**  
*Coastal Engineering*  
Irvine, California

**Tom Spencer**  
*Biogeomorphology*  
Cambridge, England, UK

**COMITÉ DE REDACCIÓN**

**Marcel J.F. Stive**  
*Coastal Hydrodynamics*  
Delft, The Netherlands

**Vallam Sundar**  
*Coastal Engineering*  
Chennai, India

**Ana Teodoro**  
*Remote Sensing*  
Porto, Portugal

**E. Robert Thieler**  
*Marine Geology*  
Woods Hole, Massachusetts

**Hannes Tõnisson**  
*Coastal Evolution*  
Tallinn, Estonia

**Arthur C. Trembanis**  
*Coastal Morphodynamics*  
Newark, Delaware

**Frank van der Meulen**  
*Coastal Zone Management*  
Delft, The Netherlands

**Ana Vila Concejo**  
*Coastal Morphodynamics*  
Sydney, NSW, Australia

**Ian J. Walker**  
*Coastal Dunes & Sediments*  
Santa Barbara, California

**Ping Wang**  
*Beach Morphodynamics*  
Tampa, Florida

**Phil J. Watson**  
*Sea-Level Change*  
Gosford, NSW, Australia

**Harry F. Williams**  
*Paleotempestology*  
Denton, Texas

**Colin D. Woodroffe**  
*Coastal Geomorphology*  
Wollongong, NSW, Australia

**Zhaoping Yang**  
*Hydrodynamic Modeling*  
Seattle, Washington

**Robert S. Young**  
*Coastal Processes*  
Cullowhee, North Carolina

**Guoliang Yu**  
*Sediment Transport*  
Shanghai, China

**Saiyu Yuan**  
*Water Flow, Sediment Transport*  
Nanjing, China



THE JOURNAL OF COASTAL RESEARCH (JCR) (ISSN 0749-0208) IS PUBLISHED BIMONTHLY FOR \$115.00 FOR INDIVIDUAL US CERF MEMBERS, \$125.00 FOR INDIVIDUAL INTERNATIONAL CERF MEMBERS, \$519.00 FOR US INSTITUTIONS, AND \$541.00 FOR INTERNATIONAL INSTITUTIONS BY THE COASTAL EDUCATION AND RESEARCH FOUNDATION, INC. (CERF), 7570 NW 47TH AVENUE, COCONUT CREEK, FL 33073-2723. PERIODICALS POSTAGE PAID AT FORT LAUDERDALE, FL AND ADDITIONAL MAILING OFFICES. **POSTMASTER:** SEND ADDRESS CHANGES TO JOURNAL OF COASTAL RESEARCH, ALLEN PRESS ASSOCIATION MANAGEMENT, P.O. BOX 1897, LAWRENCE, KS 66044-3018.

© 2021 Coastal Education and Research Foundation, Inc. [CERF].

Ⓢ This paper meets the requirements of ANSI/NISO Z39.48-1992 (Permanence of Paper).



# JOURNAL OF COASTAL RESEARCH

An International Forum for the Littoral Sciences

Supporting Scientific Institutions



- Consorzio Nazionale Interuniversitario per le Scienze del Mare (Co.N.I.S.Ma.) [Rome, Italy; [www.conisma.it/](http://www.conisma.it/)]
- Delft University of Technology [Department of Hydraulic Engineering, Delft, The Netherlands; <http://www.citg.tudelft.nl/over-faculteit/afdelingen/hydraulic-engineering/>]
- Duke University [Earth and Ocean Sciences Division, Durham, North Carolina, U.S.A.; <https://nicholas.duke.edu/marinelab>]
- Griffith University [Center for Infrastructure Engineering and Management, Southport, Queensland, Australia; <https://www.griffith.edu.au/>]
- Ibaraki University [Center for Water Environmental Studies, Mito, Japan; <http://www.cwes.ibaraki.ac.jp/>]
- International Geographical Union (IGU) [Commission on Coastal System (CCS); <http://www.igu-ccs.org/>]
- Royal Belgian Institute of Natural Sciences [Management Unit of the North Sea Mathematical Models (MUMM), Brussels, Belgium; <http://www.mumm.ac.be/EN/index.php>]
- Rutgers University [Institute of Marine and Coastal Sciences (IMCS), New Brunswick, New Jersey, U.S.A.; <http://marine.rutgers.edu/main/>]
- Universidad de la República [Marine Science Unit, Montevideo, Uruguay; <http://www.imber.info/Science/National-Network/URUGUAY>]
- Universidade Nova de Lisboa [e-Geo Center for Geographical and Regional Planning Studies, Lisbon, Portugal; <http://e-geo.fcsh.unl.pt/>]
- University of California, Santa Cruz [Institute of Marine Sciences, Santa Cruz, California, U.S.A.; <http://ims.ucsc.edu/>]
- University of Delaware [School of Marine Science and Policy, Newark, Delaware, U.S.A.; <http://www.ocean.udel.edu>]
- University of Maine [Climate Change Institute, Orono, Maine, U.S.A.; <http://climatechange.umaine.edu/>]
- University of Sydney [Coastal Studies Unit, Sydney, New South Wales, Australia; <http://sydney.edu.au/>]
- University of Szczecin [Institute of Marine and Coastal Science, Szczecin, Poland; <http://www.wnoz.ztikm.szczecin.pl/en/1/inom/structure/>]
- University of Ulster [Environmental Sciences Research Institute, Coleraine, Northern Ireland; <http://www.ulster.ac.uk/es/research/>]
- University of Wales, Trinity Saint David [Swansea Metropolitan University, Mount Pleasant, Swansea, South Wales, U.K.; <http://www.uwtsd.ac.uk/>]
- U.S. Army Corps of Engineers [Coastal and Hydraulics Laboratory (CHL), Vicksburg, Mississippi, U.S.A.; <http://chl.erdc.usace.army.mil/>]
- U.S. Geological Survey [National Wetlands Research Center, Lafayette, Louisiana, U.S.A.; <http://www.nwrc.usgs.gov/>]

## Aims and Scope of the *Journal of Coastal Research* (JCR)

*Journal of Coastal Research* (JCR), an International Forum for the Littoral Sciences, is dedicated to all aspects of coastal research. These include geology, biology, geomorphology (physical geography), climate, littoral oceanography, hydrography, coastal hydraulics, environmental (resource) management, engineering, and remote sensing. Although each field functions effectively within its own purview, the cross-disciplinary nature of coastal studies requires familiarity with other fields as well. Hence, the scope of topics is necessarily broad in order to address the complexity of coastal biophysical and socio-economic interactions. Because of the wide range of interrelated topics, the journal invites original contributions and manuscripts dealing with theory, methodology, techniques, and field or applied topic studies on interdisciplinary coastal issues.

The journal encourages the dissemination of knowledge and understanding of the coastal zone by promoting cooperation and communication between specialists in different disciplines. Natural scientists, for example, are encouraged to collaborate with professionals in other fields to prepare contributions relating to the coastal zone that foster increased appreciation of coastal environments and processes. By means of this journal, with its scholarly and professional papers, systematic review articles, book and symposia reviews, communications and news, and special topical issues, an international forum for the development of integrated coastal research is provided.

## Advertising, Editorial, and Subscription Information

**Advertising and Editorial Office:** All advertising and editorial correspondence should be sent to Dr. Chris Makowski, Editor-in-Chief, *Journal of Coastal Research*, 7570 NW 47th Avenue, Coconut Creek, FL 33073, U.S.A. PHONE: (+1) 954-899-8416. E-MAIL: [cmakowski@cerf-jcr.com](mailto:cmakowski@cerf-jcr.com) WEBSITE: [www.cerf-jcr.org](http://www.cerf-jcr.org)

**Subscription Information:** The *Journal of Coastal Research* is a bimonthly publication. Calendar-year (2021) print and online subscription prices for the JCR are: \$115.00 for US CERF members / \$125.00 for International CERF members (\$95.00 for online only), and \$519.00 for US institutions / \$541.00 for International institutions (\$437.00 for online only). Additional surface charges may apply to subscribers located outside of the USA. For additional membership and subscription forms and information, please go to [www.cerf-jcr.org](http://www.cerf-jcr.org). To obtain a membership or subscription form by mail, please send request to *Journal of Coastal Research*, P.O. Box 7065, Lawrence, KS 66044. Back Issues and Special Issues of the JCR, when available, can be directly requested at: [cerf.jcr@gmail.com](mailto:cerf.jcr@gmail.com).

**Abstracting Information:** The *Journal of Coastal Research* (JCR) is currently surveyed in: *Web of Science (WoS) Core Collection* / *Web of Knowledge (Clarivate Analytics)*; *Science Citation Index Expanded*; *SCOPUS (Elsevier)*; *BioOne Complete*; *JSTOR*; *EBSCO*; *ProQuest*; *Charlesworth*; *BIOSIS Previews*; *Zoological Record*; *Biological Abstract*; *H.W. Wilson Company*; *Thomson Reuters (ISI)*; *Cabells Scholarly Analytics*; *Essential Science Indicators*; *Chemical Abstracts Service (CAS)*; *Gale Group (Gale / Cengage Learning)*; *Copyright Clearance Center, Inc. (CCC)*; *Current Contents - Physical, Chemical & Earth Sciences*; and *Current Contents - Agriculture, Biology & Environmental Sciences*.

# Journal of Coastal Research (JCR)

SPECIAL ISSUE NO. 100, Volume I (PAGES 1-230)  
ISSN 0749-0208

FALL 2021

## *Coastal Ecosystems of the World: An Illustrated Reference of Biophysical Environments, Coastal Belts, and Marine-Terrestrial Ecological Zones*

### TABLE OF CONTENTS

DEDICATION .....	ii
INTRODUCTION .....	1
GEOGRAPHIC SUBJECT INDEX .....	225
APPENDICES .....	230

### BARRIER ARCHETYPES

Sierra Leone, Atlantic Coast .....	10
Ivory Coast (Côte d'Ivoire, Africa), Atlantic Coast .....	12
Columbia, Rincon del Mar Coast .....	14
Sierra Leone, Atlantic Coast .....	16
Guatemala, Pacific Coast .....	18
Colombia, Caribbean Coast .....	20
El Salvador, Pacific Coast .....	22
India, Bay of Bengal Coast .....	24
Mexico, Pacific Coast .....	26
New Zealand, Northland Peninsula, Pacific Coast .....	28
USA, State of Georgia, Atlantic Coast .....	30
Mexico, Gulf of Mexico Coast .....	32
Uruguay, Atlantic Coast .....	34
Mexico, Gulf of Mexico Coast .....	36
Madagascar, Indian Ocean Coast .....	38
USA, State of Mississippi, Gulf of Mexico Coast .....	40
Mexico, Gulf of California Coast .....	42
USA, State of North Carolina, Atlantic Coast .....	44
USA, State of Texas, Gulf of Mexico Coast .....	46

## Finkl and Makowski

Tasmania (Australia), Bass Strait Coast .....	48
Ukraine, Obytychna Gulf Coast .....	50
New Zealand (South Island), Pacific Coast .....	52
USA, State of Oregon, Pacific Coast .....	54
Japan, Hokkaido Prefecture, Pacific Coast .....	56
Russian Federation, Sakhalin Island, Gulf of Patience Coast .....	58
USA, State of California, Pacific Coast .....	60
Argentina, Atlantic Coast .....	62
USA, State of Oregon, Pacific Coast .....	64
Canada, Manitoba, Hudson Bay Coast .....	66
USA, State of Alaska, Resurrection Bay Coast .....	68
Iceland, Atlantic Coast .....	70
USA, State of Alaska, Bering Sea Coast .....	72
Russian Federation, Kamchatka Peninsula, Chukchi Sea Coast .....	74
USA, State of Alaska, Bering Sea Coast .....	76
Russian Federation, Murmansk, Barents Sea Coast .....	78

## BEACH ARCHETYPES

Solomon Islands, Guadalcanal, Pacific Coast .....	82
Somalia, Arabian Sea Coast .....	84
Democratic Republic of Timor-Leste (East Timor), Timor Sea Coast .....	86
Brazil, State of Ceará, Atlantic Coast .....	88
Costa Rica, Manuel Antonio National Park, Pacific Coast .....	90
Sri Lanka, Indian Ocean Coast .....	92
Ghana, Gulf of Guinea Coast .....	94
Ecuador, Galápagos Islands, Isla Isabela, Pacific Coast .....	96
Venezuela, Gulf of Venezuela Coast .....	98
Brazil, State of Bahia, Atlantic Coast .....	100
Honduras, Caribbean Sea Coast .....	102
Yemen, Island of Socotra, Gulf of Aden Coast .....	104
Mauritania, West Africa, Atlantic Coast .....	106
USA, State of Hawaii, Island of Moloka'i, Pacific Coast .....	108
Iran, Arabian Gulf Coast .....	110
Australia, Western Australia, Kalbarri, Indian Ocean Coast .....	112
Namibia, Namib Desert, Atlantic Coast .....	114
Egypt, South Sinai Governorate, Gulf of Suez Coast .....	116
South Africa, Western Cape Province, Indian Ocean Coast .....	118
Morocco, Atlantic Coast .....	120
USA, State of Florida, St. Vincent Island, Gulf of Mexico Coast .....	122

## Journal of Coastal Research, Special Issue #100, 2021

Pakistan, Balochistan Province, Arabian Sea Coast .....	124
Namibia, Skeleton Coast, Atlantic Coast .....	126
Tasmania (Australia), Tasman Sea Coast .....	128
Spain, Gulf of Cádiz Coast .....	130
Australia, Southwestern Victoria, Bass Strait Coast .....	132
USA, State of California, San Francisco, Pacific Coast .....	134
USA, State of Oregon, Pacific Coast .....	136
USA, State of Oregon, Pacific Coast .....	138
USA, State of Oregon, Pacific Coast .....	140
Japan, Hokkaido Prefecture, Pacific Coast .....	142
Tasmania (Australia), Tasman Sea Coast .....	144
Argentina, Río Negro Province, San Matias Gulf Coast .....	146
Canada, Nova Scotia, Cape Breton, Atlantic Coast .....	148
Portugal, The Algarve, Atlantic Coast .....	150
Ireland, County Mayo, Westport, Clew Bay Coast .....	152
Canada, British Columbia, Graham Island, Gulf of Alaska Coast .....	154
Tasmania (Australia), Flinders Island, Tasman Sea Coast .....	156
Sardinia (Italy), Medio Campidano Province, Mediterranean Sea Coast .....	158
Chile, Tierra del Fuego Archipelago, Isla Wollaston, Strait of Magellan Coast .....	160
Latvia, Rucava Municipality, Ceplenieki, Baltic Sea Coast .....	162
Denmark, Skagen, North Sea Coast .....	164
USA, State of Alaska, North Slope Borough, Arctic Ocean Coast .....	166

## CLIFF, DELTA, AND DUNE ARCHETYPES

Nicaragua, Pacific Coast .....	170
Papua New Guinea, East New Britain, Bismark Sea Coast .....	172
Peru, Isla Lobos de Tierra, Pacific Coast .....	174
USA, State of Hawaii, Ni'ihau Island, Pacific Coast .....	176
Sultanate of Oman, Dhofar Governorate, Arabian Sea Coast .....	178
Mexico, State of Veracruz, Gulf of Mexico Coast .....	180
Corsica (France), Mediterranean Sea Coast .....	182
Albania, Karaburun Peninsula, Adriatic Sea Coast .....	184
USA, State of Oregon, Pacific Coast .....	186
Chile, Tierra del Fuego Archipelago, Isla Wollaston, Strait of Magellan Coast .....	188
Panama, Azeuro Peninsula, Equatorial Delta, Gulf of Panama Coast .....	190
Ecuador, Boca del Rio Santiago Delta, Pacific Coast .....	192
Brazil, Amazon River Delta, Atlantic Coast .....	194
Pakistan, Indus River Delta, Arabian Sea Coast .....	196
Argentinian and Uruguayan Border, Rio de la Plata Delta, Atlantic Coast .....	198

Egypt, Nile River Delta, Mediterranean Sea Coast .....	200
Romania, Danube River Delta, Black Sea Coast .....	202
USA, State of Alaska, Cook Inlet, Sustina Flats Deltaic Area, Gulf of Alaska Coast .....	204
USA, State of Alaska, Ivishak River Delta, Beaufort Sea Coast .....	206
Canada, Northwest Territories, MacKenzie River Delta, Beaufort Sea Coast .....	208
Turkmenistan, Turkmenbashi Bay, Caspian Sea Coast .....	210

## TABLES

<b>Table 1. Code Definitions for Coastal Belt Configurations and Cross-shore Archetypes and Sub Archetype Descriptors .....</b>	<b>212</b>
<b>Table 2. Barrier Archetypes Data Summary Table .....</b>	<b>215</b>
<b>Table 3. Beach Archetypes Data Summary Table .....</b>	<b>219</b>
<b>Table 4. Cliff, Delta, and Dune Archetypes Data Summary Table .....</b>	<b>223</b>

## APPENDICES

**Appendix A. The Biophysical Cross-shore Classification System (BCCS): Defining Coastal Ecological Sequences with Catena Codification to Classify Cross-shore Successions Based on Interpretation of Satellite Imagery**

**Appendix B. Latitudinal and Situational Zonation of Coastal Catenary Sequences Observed from Satellite Images Using the Biophysical Cross-shore Classification System (BCCS)**

**Appendix C. Lateral Extrapolation of Coastal Catenary Sequences Using the Biophysical Cross-shore Classification System (BCCS) to Create Shore-parallel Situational Zonation Mapping Units**

**Appendix D. Coastal Belt Linked Classification (CBLC): A System for Characterizing the Interface between Land and Sea Based on Large Marine Ecosystems, Coastal Ecological Sequences, and Terrestrial Ecoregions**



# COASTAL EDUCATION AND RESEARCH FOUNDATION (CERF)

7570 NW 47th Avenue  
Coconut Creek, FL 33073, U.S.A.

## Officers of the Foundation

Founded in 1983 by: Charles W. Finkl, Sr. (Deceased),  
Charles W. Finkl, Jr., Rhodes W. Fairbridge (Deceased),  
and Maurice L. Schwartz (Deceased)

### President &

#### Executive Director:

Charles W. Finkl

### Secretary:

Heather M. Vollmer

### Senior Vice President &

#### Assistant Director:

Christopher Makowski

### Executive Assistant:

Barbara Russell

## CERF-JCR Regional Vice Presidents

### North America

Gary B. Griggs  
James R. Houston  
Timothy W. Kana  
Norberto C. Nadal-Caraballo

### Western Europe

Luciana S. Esteves  
Carlos Pereira da Silva  
Marcel J.F. Stive

### Eastern Europe

Niki Evelpidou  
Kazimierz K. Furmańczyk

### Oceania

Charles Lemckert  
Anja Scheffers  
Vic Semeniuk  
Andrew D. Short

### Southeast Asia

Hak Soo Lim  
Nobuo Mimura

### South America

Vanda Claudino-Sales  
Omar Defeo

### Middle East and N. Africa

Michael Phillips

## Board of Directors (Trustees)

Vanda Claudino-Sales	Joseph T. Kelley	Norbert P. Psuty
Charles W. Finkl	Stephen P. Leatherman	Vic Semeniuk
Duncan M. FitzGerald	Charles Lemckert	Douglas J. Sherman
Gary B. Griggs	Gonzalo C. Malvárez	Andrew D. Short
James R. Houston	Christopher Makowski	Daniel J. Stanley
Robert Huff	Carlos Pereira da Silva	Marcel J.F. Stive
Timothy W. Kana	Michael Phillips	Phil J. Watson

## Lifetime Members

Camilo M. Botero	Victor V. Klemas	Nelson G. Rangel-Buitrago
Frédéric Bouchette	Tetsuya Kusuda	Yoshiki Saito
Adam Michael Brook	Stephen P. Leatherman	Anja Scheffers
David M. Bush	Charles Lemckert	Andrew D. Short
Yong-Sik Cho	J. Paul Liu	Rodolfo Silva
Insik Chun	Gonzalo C. Malvárez	Jean-Daniel Stanley
Nicholas K. Coch	Ashish J. Mehta	Marcel J.F. Stive
Hany Elwany	Norberto C. Nadal-Caraballo	Charles Thibault
Kazimierz K. Furmańczyk	Fatima Navas	Frank van der Meulen
Allen Gontz	Philip D. Osborne	Erik van Wellen
Gary B. Griggs	Michael Phillips	Ya Ping Wang
Carl H. Hobbs, III	Orrin H. Pilkey, Jr.	Allan T. Williams
James R. Houston	Norbert P. Psuty	Robert S. Young
Paul S. Kench	Antonietta Quigg	Wei Zhang
Björn Kjerfve	Elijah W. Ramsey, III	

## Patron Members

Lindino Benedet	John W. Jenson
Georges Chapalain	Timothy W. Kana

## CERF-JCR Society Information

The Coastal Education and Research Foundation (CERF) is a non-profit research society dedicated to the advancement of the coastal sciences and serves as the official publisher of the international *Journal of Coastal Research* (JCR). CERF-JCR is devoted to the multi-disciplinary study of complex problems related to the coastal zone. Our purpose is to help in the translation and interpretation of coastal issues for the public and to assist professional and academic research programs by supporting and encouraging field and laboratory studies on a local, national, and global basis. Through printed scientific publications, current online content, and renowned international symposiums, CERF-JCR brings accurate information to both the public and researchers alike on all aspects of coastal issues in an effort to maintain and improve the quality of shoreline resources.

The *Journal of Coastal Research* (JCR) is one of the leading international journals for coastal studies and processes, and is published bi-monthly by the Coastal Education and Research Foundation (CERF). By covering the entire field of coastal research, the JCR encompasses all subjects relevant to natural and engineered environments (*i.e.* freshwater, brackish, or marine) and the protection/management of their resources in the vicinity of coastlines around the world. Even though the journal broadly focuses on immediate shoreline zones, the JCR also embraces those coastal environments that either reach some indefinite distance inland or that extend seaward beyond the outer margins of the sublittoral (neritic) zone. We encourage you to visit [www.cerf-jcr.org](http://www.cerf-jcr.org) for more information and invite you all to be a part of our CERF-JCR coastal research society.



## CERF-JCR MEMBERSHIP

Society members are those individuals that support the aims of CERF and the JCR. More information is available at: [www.cerf-jcr.org](http://www.cerf-jcr.org). CERF-JCR Memberships are available in different categories with certain privileges and can be viewed at: <https://cerf.allenpress.com/cerf/MEMBERSHIP.aspx>

Subscription information is available upon request by writing to: [cerf\\_jcr@gmail.com](mailto:cerf_jcr@gmail.com). The CERF-JCR subscriptions office is located at: Allen Press, Inc., P.O. Box 1897, Lawrence, KS 66044, U.S.A.

## Editor-in-Chief

**Christopher Makowski, Ph.D.**

Dr. Christopher Makowski is the Senior Vice President and Co-Executive Director of the Coastal Education and Research Foundation (CERF), the official publisher of the international *Journal of Coastal Research* (JCR). He received B.Sc. (Marine Biology), M.Sc. (Marine Ecosystem Diversity), and Ph.D. (Coastal Geoscience and Remote Sensing of Biogeomorphological Resources) degrees from Florida Atlantic University of Boca Raton, Florida, USA, and has worked for over 25 years in the coastal research community, holding titles of Assistant Director (Coastal Planning & Engineering's Marine Science and Biological Research Department), Principal Marine Scientist (Collier County, Florida, USA), and Senior Advisor (International Coastal Symposium [ICS]). Dr. Makowski has published numerous peer reviewed papers, authored multiple chapters, and co-edited various volumes in Springer's Coastal Research Library (CRL) Series and Encyclopedia of Earth Sciences Series (EESS). In addition to these accomplishments, he is professionally recognized by the American Academy of Underwater Sciences (AAUS) and is certified as a Master Scuba Diver Trainer through the Professional Association of Diving Instructors (PADI), having logged over 2,000 underwater dives on six different continents. Other professional registrations, certifications, and accreditations include: Coastal Education and Research Foundation (CERF) Board of Directors (Trustees), BioOne Board of Directors, International Society for Reef Studies (ISRS) Member, Florida Association of Environmental Professionals (FAEP) Chapter Member, American Academy of Underwater Sciences (AAUS) Registered Diving Safety Officer, American Association for the Advancement of Science (AAAS) Member, National Marine Fisheries Service (NMFS) Certified Marine Mammal and Protected Species Observer, Professional Association of Diving Instructors (PADI) Open Water Scuba Diver Instructor, PADI Enriched Air Nitrox Specialty Instructor, Emergency First Responder (CPR/FirstAid/AED) Instructor, PADI Specialty Underwater Photographer Instructor, and Divers Alert Network (DAN) Sustaining Member.

For more information, please visit Dr. Makowski's home page at: [www.cerf-jcr.org](http://www.cerf-jcr.org)

## International Coastal Symposium (ICS) Official Meeting of CERF-JCR

The International Coastal Symposium (ICS) was originally set up by Per Bruun (deceased) and Charles W. Finkl as the official meeting of the Coastal Education and Research Foundation (CERF) and the *Journal of Coastal Research* (JCR), with one of the first meetings being held in Hilton Head, South Carolina, in 1993. After the repeated success of these meetings, CERF-JCR moved the ICS to an international platform by holding these conferences in conjunction with local sponsors in the United States, Australia, Brazil, Iceland, New Zealand, Northern Ireland, Poland, Portugal, Spain, and South Korea. The ICS brings together delegates from all over the world to collaborate and discuss the most current coastal research studies and projects. During the ICS 2014, which was held in Durban, South Africa, a grand celebration took place to mark the 30th Anniversary of CERF and the JCR. For more information, please visit [www.cerf-jcr.org](http://www.cerf-jcr.org).



# Journal of Coastal Research (JCR)

SPECIAL ISSUE NO. 100, Volume I (pages 1-230)  
ISSN 0749-0208

FALL 2021

Centennial Volume in Celebration of  
One Hundred JCR Special Issues



[www.cerf-jcr.org](http://www.cerf-jcr.org)



[www.JCRonline.org](http://www.JCRonline.org)