



Special Issue 76 - Advances in Topobathymetric Mapping, Models, and Applications

Source: Journal of Coastal Research, 76(sp1)

Published By: Coastal Education and Research Foundation

URL: <https://doi.org/10.2112/1551-5036-76.sp1.i>

BioOne Complete (complete.BioOne.org) is a full-text database of 200 subscribed and open-access titles in the biological, ecological, and environmental sciences published by nonprofit societies, associations, museums, institutions, and presses.

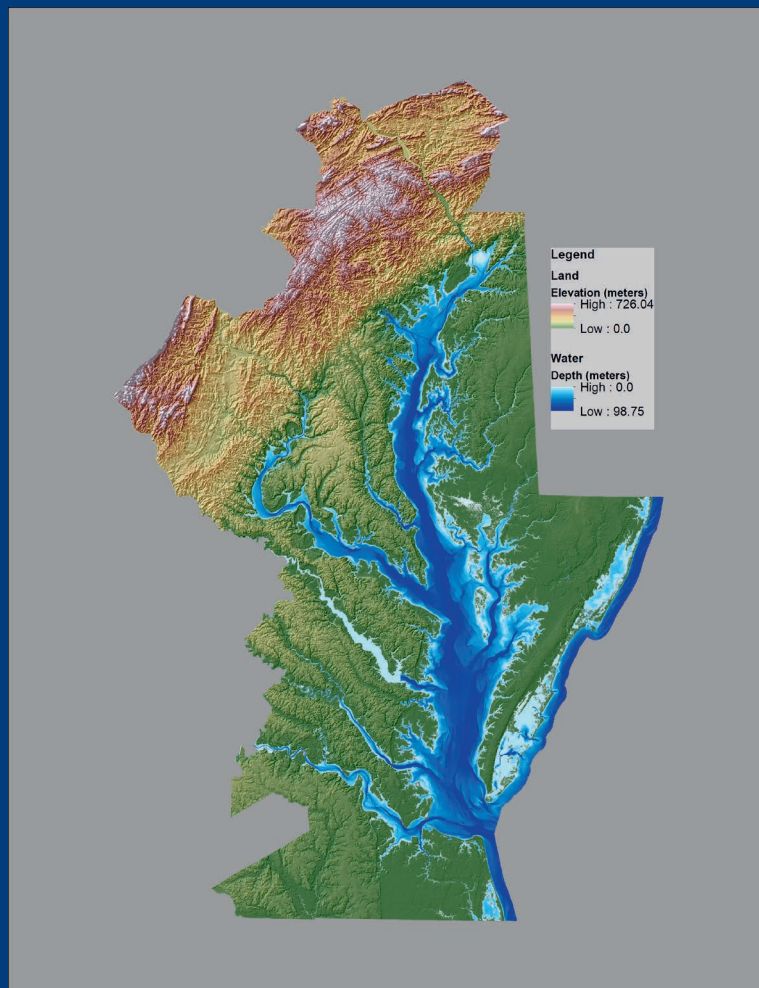
Your use of this PDF, the BioOne Complete website, and all posted and associated content indicates your acceptance of BioOne's Terms of Use, available at www.bioone.org/terms-of-use.

Usage of BioOne Complete content is strictly limited to personal, educational, and non - commercial use. Commercial inquiries or rights and permissions requests should be directed to the individual publisher as copyright holder.

BioOne sees sustainable scholarly publishing as an inherently collaborative enterprise connecting authors, nonprofit publishers, academic institutions, research libraries, and research funders in the common goal of maximizing access to critical research.

Advances in Topobathymetric Mapping, Models, and Applications

Guest Editors: John C. Brock, Dean B. Gesch, Christopher E. Parrish,
Jeffrey N. Rogers, and C. Wayne Wright



Journal of
Coastal Research
Special Issue #76

An International Forum for the Littoral Sciences
Charles W. Finkl
Editor-in-Chief



Published by



JOURNAL OF COASTAL RESEARCH

An International Forum for the Littoral Sciences

CHEF-HERAUSGEBER

25 Jake Ridge Trail
Fletcher, NC
28732, U.S.A.

BOOK REVIEW EDITOR

J. Andrew G. Cooper
School of Environmental Sciences
University of Ulster
Coleraine, N. Ireland
jag.cooper@ulster.ac.uk

EDITOR-IN-CHIEF

Charles W. Finkl

Coastal Education and Research Foundation, Inc. [CERF]

Editorial Offices:
5130 NW 54th Street
Coconut Creek, FL

33073, U.S.A.

(Editorial Office, Coconut Creek)

CERF/JCR Website: <http://www.CERF-JCR.org>
e-mail: cfinkl@cerf-jcr.com

RÉDACTEUR-EN-CHEF

DEPUTY EDITOR-IN-CHIEF

Christopher Makowski
Coastal Education and Research
Foundation, Inc. [CERF]
5130 NW 54th Street
Coconut Creek, FL 33073, U.S.A.
cmakowski@cerf-jcr.com

EDITORIAL ASSISTANT

Barbara Russell
Coastal Education and Research
Foundation, Inc. [CERF]
5130 NW 54th Street
Coconut Creek, FL 33073, U.S.A.
barbara@cerf-jcr.com

WEB DESIGN & DEVELOPMENT

Jon Finkl
Media Mine
17600 River Ford Drive
Davidson, NC 28036, U.S.A.
jon@mediamine.net

MITHERAUSGEBER

Edward J. Anthony

Coastal Geomorphology
Dunkerque, France

Kenneth Banks

Coral Reef Geomorphology
Plantation, Florida

Patrick Barnard

Coastal Geomorphology
Santa Cruz, California

Lindino Benedet

Oceanography, Modeling
Florianopolis, SC, Brazil

David M. Bush

Coastal Geology & Hazards
Carrollton, Georgia

Ilya V. Buynevich

Coastal Geology
Philadelphia, Pennsylvania

Javier A. Carrió

Sediment Processes
Valencia, Spain

Mark Crowell

Coastal Zone Management
McLean, Virginia

Omar Defeo

Sandy Beach Ecology
Montevideo, Uruguay

J. Javier Diez

Coastal Geomorphology
Madrid, Spain

Joseph F. Donoghue

Coastal Morphology & Hazards
Orlando, Florida

Jean Ellis

Aeolian Sediment Transport
Columbia, South Carolina

Luciana Esteves

Coastal Flooding & Erosion
Bournemouth, England, UK

Oscar Manuel Ferreira

Storm Impacts
Faro, Portugal

Duncan M. FitzGerald

Sediment Transport
Boston, Massachusetts

Chip Fletcher

Coastal Geology
Honolulu, Hawaii

Kazimierz K. Furmańczyk

Marine Cartography
Szczecin, Poland

Allen Gontz

Geophysics, Stratigraphy
San Diego, California

Gary B. Griggs

Coastal Engineering & Hazards
Santa Cruz, California

Pramod Hanamgond

Coastal Geomorphology
Belgaum, India

Hans Hanson

Coastal Protection
Lund, Sweden

Simon Haslett

Paleoceanography
Swansea, Wales, UK

David Hill

Nearshore Hydrodynamics
Corvallis, Oregon

Michael Hilton

Dune Geomorphology & Ecology
Dunedin, New Zealand

Carl H. Hobbs, III

Coastal Geology, Sand Mining
Gloucester Point, Virginia

James R. Houston

Sea-Level Change
Vicksburg, Mississippi

Wenrui Huang

Coastal Hydrodynamics
Tallahassee, Florida

Michael G. Hughes

Coastal Morphodynamics
Canberra, ACT, Australia

Federico I. Isla

Sea-Level Change
Mar Del Plata, Argentina

Nancy L. Jackson

Coastal Geomorphology
Newark, New Jersey

Markes E. Johnson

Paleoshores, Coastal Sand Dunes
Williamstown, Massachusetts

Timothy R. Keen

Waves & Circulation
Stennis Space Center, Mississippi

Dieter H. Kelleter

Coastal Geomorphology
Essen / Cologne, Germany

ASSOCIATE EDITORS

Joseph T. Kelley

Sea-Level Change
Orono, Maine

Vic Klemas

Remote Sensing
Newark, Delaware

Nobuhisa Kobayashi

Coastal Engineering
Newark, Delaware

Vladimir N. Kosmynin

Coral Reefs, Coastal Ecology
Tallahassee, Florida

Joseph L. Kowalski

Estuarine Plant Ecology
Edinburg, Texas

Michael J. Lacey

Coastal Landforms & Processes
West Branch, Iowa

Stephen P. Leatherman

Barrier Islands, Beach Erosion
Miami, Florida

Charles Lemckert

Environmental Fluid Dynamics
Southport, Qld, Australia

Ioannis Liritzis

Geophysical Proxy Data
Rhodes, Greece

Jeffrey H. List

Shoreline Change Processes
Woods Hole, Massachusetts

Michel M. de Mahiques

Sediment Processes
São Paulo, Brazil

Gonzalo C. Malvárez-García

Beach Morphodynamics
Seville, Spain

Ashish J. Mehta

Coastal Engineering
Gainesville, Florida

Nobuo Mimura

Environmental Engineering
Ibaraki, Japan

Fatima Navas

Coastal Morphodynamics
Seville, Spain

Robert Nicholls

Global Climate Change
Southampton, England, UK

Karl F. Nordstrom

Coastal Geomorphology
New Brunswick, New Jersey

Julian Orford

Gravel Beaches, Storm Events
Belfast, Northern Ireland, UK

Phil D. Osborne

Sediment Dynamics
Shoreline, Washington

Hugh Parker

Airborne Lidar Bathymetry
Adelaide, SA, Australia

Charitha B. Pattiaratchi

Physical Oceanography
Crawley, WA, Australia

Carlos Pereira da Silva

Coastal Zone Management
Lisbon, Portugal

Michael Phillips

Coastal Geomorphology
Swansea, Wales, UK

Orrin H. Pilkey, Jr.

Coastal Geology
Durham, North Carolina

Paolo A. Pirazzoli

Sea-Level Changes
Paris, France

Nobert P. Psuty

Coastal Geomorphology
New Brunswick, New Jersey

Ulrich Radtke

Coastal Geomorphology
Duisburg-Essen, Germany

Elijah W. Ramsey, III

Coastal Image Processing
Lafayette, Louisiana

Kirt Rusenko

Sea Turtles, Dune Restoration
Boca Raton, Florida

Anja Scheffers

Coastal Evolution
Lismore, NSW, Australia

Vic Semeniuk

Mangroves
Perth, WA, Australia

Andrew D. Short

Coastal Geomorphology
Sydney, NSW, Australia

Pravi Shrestha

Coastal Engineering
Irvine, California

Alejandro J. Souza

Coastal & Sediment Processes
Liverpool, England, UK

Tom Spencer

Biogeomorphology
Cambridge, England, UK

Marcel Stive

Coastal Hydrodynamics
Delft, The Netherlands

Vallam Sundar

Coastal Engineering
Chennai, India

Adam D. Switzer

Coastal Hazards, Sea-Level
Change

NTU, Singapore

E. Robert Thieler

Marine Geology
Woods Hole, Massachusetts

Arthur C. Trembanis

Coastal Morphodynamics
Newark, Delaware

Frank Van Der Meulen

Coastal Zone Management
Delft, The Netherlands

Ian J. Walker

Coastal Dunes & Sediments
Tempe, Arizona

Ping Wang

Beach Morphodynamics
Tampa, Florida

Allan Williams

Coastal Geology
Swansea, Wales, UK

Harry F. Williams

Paleotempestology
Denton, Texas

Colin D. Woodroffe

Coastal Geomorphology
Wollongong, NSW, Australia

Robert S. Young

Coastal Processes
Cullowhee, North Carolina

Guoliang Yu

Sediment Transport
Shanghai, China



THE JOURNAL OF COASTAL RESEARCH (JCR) (ISSN 0749-0208) IS PUBLISHED BIMONTHLY FOR \$115.00 FOR INDIVIDUAL US CERF MEMBERS, \$125.00 FOR INDIVIDUAL INTERNATIONAL CERF MEMBERS, \$519.00 FOR US INSTITUTIONS, AND \$541.00 FOR INTERNATIONAL INSTITUTIONS BY THE COASTAL EDUCATION AND RESEARCH FOUNDATION, INC. (CERF), 5130 NW 54TH STREET, COCONUT CREEK, FL 33073-8713. PERIODICALS POSTAGE PAID AT FORT LAUDERDALE, FL AND ADDITIONAL MAILING OFFICES. **POSTMASTER:** SEND ADDRESS CHANGES TO JOURNAL OF COASTAL RESEARCH, ALLEN PRESS ASSOCIATION MANAGEMENT, P.O. BOX 1897, LAWRENCE, KS 66044-3018.

© 2016 Coastal Education and Research Foundation, Inc. [CERF].

Ⓢ This paper meets the requirements of ANSI/NISO Z39.48-1992 (Permanence of Paper).

COASTAL EDUCATION AND RESEARCH FOUNDATION

5130 NW 54th Street
Coconut Creek, FL 33073, U.S.A.

Officers of the Foundation

Founded in 1983 by: Charles W. Finkl, Sr. (Deceased),
Charles W. Finkl, Jr., Rhodes W. Fairbridge (Deceased),
and Maurice L. Schwartz (Deceased)



**President &
Executive Director:**
Charles W. Finkl

**Senior Vice President &
Assistant Director:**
Christopher Makowski

Secretary:
Heather M. Vollmer

Executive Assistant:
Barbara Russell

CERF MEMBERSHIP

Members are individuals that support the aims of the foundation through personal and group efforts or by donations. Memberships are available in different categories with privileges.

Subscription information is available online at www.cerf-jcr.org. Subscriptions office: Allen Press, Inc., P.O. Box 1897, Lawrence, KS 66044, U.S.A. CERF@allenpress.com

Regional Vice Presidents

North America
James R. Houston
Victor V. Klemas
Orrin H. Pilkey, Jr.

Western Europe
Carlos Pereira da Silva
Michael Phillips
Marcel J.F. Stive

South America
Omar Defeo

Eastern Europe
Kazimierz K. Furmanczyk

Southeast Asia
Nobuo Mimura

Oceania
Charles Lemckert
Vic Semeniuk
Andrew D. Short

Editor-in-Chief

Charles W. Finkl Ph.D., CSci, CMarSci, FIMarEST, CPGS, CPSSc, PWS, M.ASCE

Dr. Charles W. Finkl is President and Executive Director of the Coastal Education and Research Foundation [CERF], publisher of the JCR. Charlie, a founding editor of the *Journal of Coastal Research*, has served as Editor-in-Chief for the past 30 years. He is a Research Professor in the Department of Geosciences at Florida Atlantic University in Boca Raton, Florida. He received his Bachelor and Master of Science degrees from Oregon State University and the Ph.D. from the University of Western Australia. He is a member of more than 20 professional societies and has published more than 200 professional papers, books, and reports. He is a Chartered Marine Scientist (CMarSci) [Institute of Marine Engineering, Science and Technology], Certified Professional Geological Scientist (CPGS) [American Institute of Professional Geologists (AIPG)], Certified Professional Soil Scientist (CPSSc) [American Registry of Certified Professionals in Agronomy, Crops, and Soils], and a Professional Wetland Scientist (PWS) [Society of Wetland Scientists]. Charlie has field experience in parts of the USA, Caribbean area, Brazil, Honduras, Russia, South Africa, Western Europe, Australasia, and South Pacific islands. He is also the Series Editor of the Encyclopedia of Earth Sciences Series that is published by Springer (Germany). There are more than twenty-eight volumes in the Series and about twenty-five are available online. Charlie also serves on the Editorial Board of the *International Journal of Environmental Studies* (Routledge) and is an occasional peer reviewer for many other professional journals.

Board of Directors (Trustees)

J. Andrew G. Cooper	Victor V. Klemas	Elijah W. Ramsey, III
Charles W. Finkl	Charles Lemckert	Vic Semeniuk
Erlend J. Frederickson	Chris Makowski	Andrew D. Short
Gary B. Griggs	Carlos Pereira da Silva	Daniel J. Stanley
James R. Houston	Michael Phillips	Marcel J.F. Stive
Robert Huff	Orrin H. Pilkey, Jr.	Allan Williams
Joseph T. Kelley	Norbert P. Psuty	

Lifetime Members

Frédéric Bouchette	Stephen P. Leatherman	Charles Thibault
Yong-Sik Cho	Charles Lemckert	Erik van Wellen
Nicholas K. Coch	Philip D. Osborne	Ya Ping Wang
Hany Elwany	Yoshiki Saito	Wei Zhang
Björn Kjerfve		

Patron Members

Luis Antonio Buenfil-Lopez	Georges Chapalain	Norbert P. Psuty
Lindino Benedet	Carl H. Hobbs, III	Robert S. Young
	Timothy W. Kana	

CERF Society Information

The Coastal Education and Research Foundation [CERF] is a nonprofit society dedicated to the advancement of the coastal sciences. The Foundation is devoted to the multi-disciplinary study of the complex problems of the coastal zone. The purpose of CERF is to help translate and interpret coastal issues for the public and to assist professional research and public information programs. The Foundation specifically supports and encourages field and laboratory studies on a local, national, and international basis. Through the medium of scientific publications, television, and radio CERF brings accurate information to the public and coastal specialists on all aspects of coastal issues in an effort to maintain or improve the quality of shoreline resources.

Because CERF is concerned with broad environmental issues, our efforts concentrate on significant problems such as maintenance of good quality (potable) water with adequate supply, and hazards associated with potential beach erosion, flooding, and susceptibility of developed shorelines to storm surge and wave attack. By focusing attention on these potential man-made and natural hazards, it is hoped that our research efforts will help others improve the quality of life in diverse coastal areas. CERF thus aims to stimulate awareness of coastal (marine and freshwater shorelines) land and water problems; initiate and foster research and innovation to promote long-term coastal productivity; establish an educational forum for the debate of contentious coastal issues; and develop new principles and approaches for enlightened coastal management, and encourage their adoption and use.

Official Meeting of CERF International Coastal Symposium (ICS)

The International Coastal Symposium (ICS) was originally set up by Per Bruun (deceased) and Charlie Finkl as the official meeting of the Coastal Education and Research Foundation (CERF), with one of the first meetings being held in Hilton Head, South Carolina, in 1993. After the repeated success of these meetings, CERF moved the ICS to the international scene holding these conferences in conjunction with local sponsors in Australia, Brazil, Iceland, New Zealand, Northern Ireland, Poland, and Portugal. The ICS brings together delegates from all over the world to collaborate and discuss the most current coastal research studies and projects. During the ICS 2014, which was held in Durban, South Africa, a grand celebration took place to mark the 30th Anniversary of CERF and the JCR. Our next ICS meeting is scheduled for May of 2018 in Busan, South Korea. For more information, please visit www.cerf-jcr.org.

Journal of Coastal Research

SPECIAL ISSUE NO. 76 (pages 1–218)

WINTER 2016

ISSN 0749-0208

CONTENTS

Introduction: Special Issue on Advances in Topobathymetric Mapping, Models, and Applications	1
..... Dean B. Gesch, John C. Brock, Christopher E. Parrish, Jeffrey N. Rogers, and C. Wayne Wright	
Depth Calibration and Validation of the Experimental Advanced Airborne Research Lidar, EAARL-B	4
..... C. Wayne Wright, Christine Kranenburg, Timothy A. Battista, and Christopher Parrish	
Modeling of Airborne Bathymetric Lidar Waveforms.....	18
..... Minsu Kim, Yuri Kopilevich, Viktor Feygels, Joong Yong Park, and Jennifer Wozencraft	
Optimization of Data Collection and Refinement of Post-processing Techniques for Maritime Canada's First Shallow Water Topographic-bathymetric Lidar Survey	31
..... Timothy Webster, Kevin McGuigan, Nathan Crowell, Kate Collins, and Candace MacDonald	
Inland and Near-Shore Water Profiles Derived from the High-Altitude Multiple Altimeter Beam Experimental Lidar (MABEL)	44
..... Michael F. Jasinski, Jeremy D. Stoll, William B. Cook, Michael Ondrusek, Eric Stengel, and Kelly Brunt	
Identifying Bathymetric Differences over Alaska's North Slope using a Satellite-derived Bathymetry Multi-temporal Approach	56
..... Shachak Pe'eri, Brian Madore, John Nyberg, Leland Snyder, Christopher Parrish, and Shep Smith	
Creating a Coastal National Elevation Database (CoNED) for Science and Conservation Applications.....	64
..... Cindy A. Thatcher, John C. Brock, Jeffrey J. Danielson, Sandra K. Poppenga, Dean B. Gesch, Monica E. Palaseanu-Lovejoy, John A. Barras, Gayla A. Evans, and Ann E. Gibbs	
Topobathymetric Elevation Model Development using a New Methodology: Coastal National Elevation Database	75
..... Jeffrey J. Danielson, Sandra K. Poppenga, John C. Brock, Gayla A. Evans, Dean J. Tyler, Dean B. Gesch, Cindy A. Thatcher, and John A. Barras	
Hydrologic Connectivity: Quantitative Assessments of Hydrologic-Enforced Drainage Structures in an Elevation Model..	90
..... Sandra K. Poppenga and Bruce B. Worstell	
Assessment of Elevation Uncertainty in Salt Marsh Environments using Discrete-Return and Full-Waveform Lidar	107
..... Jeffrey N. Rogers, Christopher E. Parrish, Larry G. Ward, and David M. Burdick	
Accuracy of Interpolated Bathymetry in Digital Elevation Models.....	123
..... Christopher J. Amante and Barry W. Eakins	
Using Lidar Elevation Data to Develop a Topobathymetric Digital Elevation Model for Sub-Grid Inundation Modeling at Langley Research Center.....	134
..... Jon Derek Loftis, Harry V. Wang, Russell J. DeYoung, and William B. Ball	
Modeling and Simulation of Storm Surge on Staten Island to Understand Inundation Mitigation Strategies	149
..... Michael E. Kress, Alan I. Benimoff, William J. Fritz, Cindy A. Thatcher, Brian O. Blanton, and Eugene Dzedzits	
Automatic Delineation of Seacliff Limits using Lidar-derived Highresolution DEMs in Southern California	162
..... Monica Palaseanu-Lovejoy, Jeff Danielson, Cindy Thatcher, Amy Foxgrover, Patrick Barnard, John Brock, and Adam Young	
Morphological Expressions of Coastal Cliff Erosion Processes in San Diego County	174
..... Elizabeth Johnstone, Jessica Raymond, Michael J. Olsen, and Neal Driscoll	
Fate and Transport of Seacliff Failure Sediment in Southern California	185
..... Michael J. Olsen, Elizabeth Johnstone, Neal Driscoll, Falko Kuester, and Scott A. Ashford	
Post-Sandy Benthic Habitat Mapping Using New Topobathymetric Lidar Technology and Object-Based Image Classification	200
..... Christopher E. Parrish, Jennifer A. Dijkstra, Jarlath P.M. O'Neil-Dunne, Lindsay McKenna, and Shachak Pe'eri	
Elgrass and Macroalgal Mapping to Develop Nutrient Criteria in New Hampshire's Estuaries using Hyperspectral Imagery	209
..... Shachak Pe'eri, J. Ru Morrison, Fred Short, Arthur Mathieson, and Thomas Lippmann	



CERF

J
O
U
R
N
A
L

of

C
O
A
S
T
A
L

R
E
S
E
A
R
C
H

SI
76