



Hoverflies (Diptera: Syrphidae) of El Ventorrillo Biological Station, Madrid province, Spain: a perspective from a late twentieth century inventory

Authors: Lorenzo, Daniel, Ricarte, Antonio, Nedeljković, Zorica, Nieves-Aldrey, José Luis, and Marcos-García, Maria Ángeles

Source: *Revue suisse de Zoologie*, 127(2) : 393-412

Published By: Muséum d'histoire naturelle, Genève

URL: <https://doi.org/10.35929/RSZ.0029>

BioOne Complete (complete.BioOne.org) is a full-text database of 200 subscribed and open-access titles in the biological, ecological, and environmental sciences published by nonprofit societies, associations, museums, institutions, and presses.

Your use of this PDF, the BioOne Complete website, and all posted and associated content indicates your acceptance of BioOne's Terms of Use, available at www.bioone.org/terms-of-use.

Usage of BioOne Complete content is strictly limited to personal, educational, and non - commercial use. Commercial inquiries or rights and permissions requests should be directed to the individual publisher as copyright holder.

BioOne sees sustainable scholarly publishing as an inherently collaborative enterprise connecting authors, nonprofit publishers, academic institutions, research libraries, and research funders in the common goal of maximizing access to critical research.

Hoverflies (Diptera: Syrphidae) of El Ventorrillo Biological Station, Madrid province, Spain: a perspective from a late twentieth century inventory

Daniel Lorenzo¹, Antonio Ricarte^{1*}, Zorica Nedeljković¹, José Luis Nieves-Aldrey²
& María Ángeles Marcos-García¹

¹ Centro Iberoamericano de la Biodiversidad (CIBIO), Universidad de Alicante, Carretera de San Vicente, s/n, 03690 San Vicente del Raspeig, Alicante, Spain.

² Museo Nacional de Ciencias Naturales (C.S.I.C.). J. Gutiérrez Abascal 2, 28006 Madrid, Spain.

* Corresponding author: ricarte24@gmail.com

Abstract: Temporal comparisons of a site's biodiversity depend on the availability of at least two asynchronous data sets on a bioindicator group. The Sierra de Guadarrama, a mountain range in central Spain has a high biodiversity and representative sites such as El Ventorrillo Biological Station (Madrid province) play an important role in research and monitoring of the Sierra biodiversity. Although unevenly and randomly, hoverflies of the Sierra de Guadarrama have been surveyed for decades, but never at El Ventorrillo. This important group of pollinators, aphid predators and bioindicators was sampled with a Malaise trap at El Ventorrillo from June 1989 to June 1990. A total of 51 species were identified (20 spp. of Eristalinae and 31 spp. of Syrphinae), 22 of which were new to the Sierra de Guadarrama and 17 to the Madrid province. The genera *Brachypalpus* and *Didea* were also new to the Madrid province. The Sierra de Guadarrama now has 126 species recorded and the Madrid province 150. Within the Sierra de Guadarrama, El Ventorrillo becomes the second locality in number of hoverfly species recorded after El Escorial (64 spp.). In the Malaise trap catch, hoverflies with zoophagous larvae had a higher representation than those of other guilds, both in species richness and abundance. The results provided here for El Ventorrillo represent a baseline for future biodiversity studies at this site with a similar experimental design, for example, to detect changes in hoverfly diversities along time.

Keywords: Eristalinae, Syrphinae, species richness, Sistema Central, Sierra de Guadarrama, Puerto Navacerrada, Malaise trap.

INTRODUCTION

Hoverflies are diverse, both in species and ecology, and occur in most habitats and regions (Marshall, 2012), pollinate many plants and control populations of other insects (Rotheray & Gilbert, 2011). They can be used as indicators of habitat integrity (Speight & Castella, 2005) and Global Change (Rotheray & Gilbert, 2011). Changing climate may have negative effects on hoverflies; for instance, in southern Europe, populations of saproxylic species (larvae dependent on moist microhabitats in trees, such as rot holes) are thought to decrease in the future under a projected warming climate (Marcos García & Ricarte, 2009). Diversity comparisons over time in accordance with available climatic data may help to understand the effects of climate change on biodiversity, but this requires that temporal series of data on diversity surveys are available.

Highlands represent areas of endemism and high biodiversity levels within the Mediterranean Basin

(García-Barros *et al.*, 2002; Reyero, 2002; Marcos-García *et al.*, 2007). The Sierra de Guadarrama, located in central Spain, is one of the Iberian locations with the most significant biodiversity (Lobo *et al.*, 2001; Lobo & Martín-Piera, 2002; Nieves-Aldrey *et al.*, 2003). For example, 1310 species of Hymenoptera are known to occur at El Ventorrillo (Madrid), a representative site within Sierra de Guadarrama, and in total 13000 insect species are estimated to occur at this single site (Nieves-Aldrey *et al.*, 2003). Its remarkable entomological diversity justifies the status of part of Sierra de Guadarrama as a national park since 2013. This Sierra is included mainly in the provinces of Madrid and Segovia, and most of the national park's surface belongs to the province of Madrid.

With 135 species, the province of Madrid has the third highest number of hoverfly species recorded for a Spanish province (Ricarte & Marcos-García, 2017; Grković *et al.*, 2019; Van Steenis *et al.*, 2020). Gil-Collado (1930) provided hoverfly records for 14 localities in the Sierra de

Guadarrama: Cercedilla, Collado Mediano, El Escorial, El Espinar, El Paular, Guadarrama, Los Molinos, Lozoya, Navacerrada, La Granja/San Ildefonso, San Rafael, Sierra de Guadarrama, Valle del Paular and Valsain (Fig. 1). Later on, Peris (1962) described *Sericomyia hispanica* Peris, 1962 based on specimens from Cercedilla and La Granja reported by Gil-Collado (1930) as *Sericomyia lappona* (Linnaeus, 1758). Marcos-García & Louis (2001) also reported some hoverfly species from Sierra de Guadarrama. Marcos-García *et al.* (2007) treated unpublished material of *Merodon unguicornis* Strobl in Czerny & Strobl, 1909 from Cercedilla and designated a lectotype for *Merodon escorialensis* Strobl in Czerny & Strobl, 1909 from two syntypes collected at El Escorial. Van Steenis & Lucas (2011) reported *Pipizella lyneborgi* Torp Pedersen, 1971 based on specimens collected at El Escorial 2-3 years after its original description.

Within the Sierra de Guadarrama, some major insect groups are clearly understudied. For example, prior to this study only 27 species of five Dipteran families were known from El Ventorrillo (Kehlmaier, 2004, 2005; Kehlmaier *et al.*, 2019), with no records of bioindicator families such as hoverflies. Between 1988 and 1991, insects were systematically surveyed at El Ventorrillo, with more than a million specimens caught. Diptera was the most abundant group in these samples, with nearly half of the total number of collected specimens (Nieves-Aldrey *et al.*, 1991, 2003).

The main aim of the present study is to increase our knowledge on hoverfly distribution and phenology in the Sierra de Guadarrama by presenting a list of the hoverflies collected at El Ventorrillo with a Malaise trap over a one year period. The long term goal is to facilitate future comparisons of temporal diversities. The results



Fig. 1: Sierra de Guadarrama (Spain). El Ventorrillo is indicated with a red triangle. All labelled localities belong to Sierra de Guadarrama, although found outside the borders of the national park.

are also placed in the wider framework of the hoverfly diversity of the Sierra de Guadarrama and that of the province of Madrid.

MATERIAL AND METHODS

Study area

The Sierra de Guadarrama, with altitudes above 2000 m, belongs to the Sistema Central mountain range of Spain. El Ventorrillo (40°45'16.5"N 4°01'15.5"W, 1482 m) is a Biological Station of the 'Museo Nacional de Ciencias Naturales' (MNCN) (CSIC-Consejo Superior de Investigaciones Científicas), located on the south slope of Sierra de Guadarrama, in Cercedilla (Madrid province), about 60 km from the metropolis of Madrid (Nieves-Aldrey *et al.*, 2003) (Fig. 1). The climate is subhumid Mediterranean tending to central European (Allué Andrade, 1987), with cold winters, possible freezes from September to June, 1000-1600 mm/year of precipitation, and a short, dry, and warm period in July-August ('Puerto de Navacerrada' as weather reference).

The area's vegetation is supra Mediterranean (Rivas Martínez, 1982), but the original vegetation has been

largely replaced by plantations of *Pinus sylvestris* L. The vegetation at El Ventorrillo consists of a dense human-modified forest mainly of maples (*Acer pseudoplatanus* L.) and mountain elms (*Ulmus* sp.), but also linden, pine, cedar, fir, poplar, ash and holly. In the lower part of the Station, woodland is replaced by grasslands with roses and brambles. The vegetation at the forest/grassland edge consists of various shrubs such as *Cytisus*, *Crataegus*, *Rubus*, *Rosa*, *Cistus*, *Santolina*, *Juniperus*, and *Prunus*, while in close-by areas outside the Station some patches of *Quercus pyrenaica* Willd. with *Cistus* shrubs occur (Nieves-Aldrey *et al.*, 2003) (Fig. 2).

Hoverfly sampling and identification

Insects were collected with a black Malaise trap of American design (Townes, 1972; Darling & Packer, 1988) (Fig. 2), from June 1989 to June 1990, except for the winter months of December to February, by José Luis Nieves-Aldrey & Carmen Rey-del-Castillo. The Malaise trap was placed in a humid site within a grassland/mix-forest edge (Nieves-Aldrey *et al.*, 2003) (Fig. 2). Samples were collected in 75% alcohol and the trap was serviced weekly during a period of 240 days. Dipterans were



Fig. 2. El Ventorrillo in summer (Sierra de Guadarrama, Spain). Malaise trap placed in grassland/mix-forest edge.

extracted from the samples by José Luis Nieves-Aldrey and Carmen Rey-del-Castillo. Hoverflies were separated from the other Dipterans by Arabia Sánchez-Terrón in the 90's, and sent in plastic tubes with alcohol to the CIBIO Institute, University of Alicante, for identification. Specimens were dry mounted by Daniel Lorenzo, except for those of very abundant species that were stored in 70% alcohol. Some identified specimens were discarded due to their bad condition, but included in the results (see indications in the material examined).

Specimens were identified by Daniel Lorenzo with the assistance and supervision of Antonio Ricarte (Eristalinae), Zorica Nedeljković (Syrphinae), and M.A. Marcos-García. Keys and descriptions in the following publications were used for genus and species identifications: Violovitsh (1974), Goeldlin de Tiefenau (1976), Van Veen (2004), Vujić & Šimić (1999), Marcos-García *et al.* (2007), Nedeljković *et al.* (2013, 2015), Popović *et al.* (2015), Speight & Sarthou (2017), Van Steenis *et al.* (2017), and Van Steenis *et al.* (2020). The examined material is deposited in the 'Colección Entomológica de la Universidad de Alicante' (CEUA), CIBIO, University of Alicante, Spain.

The species recorded from El Ventorrillo are arranged alphabetically by genus and species (see 'Hoverfly records from El Ventorrillo'). The subfamily is indicated for each genus. Under each species, data on 'material examined' and 'guild' are presented. Ricarte & Marcos-García (2017), Van Steenis *et al.* (2017) and Grković *et al.* (2019) were used to find out which species were new to the Madrid province.

Guild, phenology, biogeography and conservation assessments

Ecological guilds, phenology, biogeographic features and conservation status of the hoverfly species found at El Ventorrillo were assessed. For the functional diversity assessment, species were classified in guilds according to larval trophic habits (Speight, 2020): zoophagous, phytophagous, saprophagous, and saproxylic (see 'Hoverfly records from El Ventorrillo' in results). Both saprophagous and saproxylic larvae feed on decaying organic materials. Saproxylic larvae develop in rot-holes, sap runs, tunnels in fallen wood, or under bark, i.e. they depend on trees while saprophagous larvae are found in decaying herbaceous vegetation of aquatic habitats, mud, dung, manure, and other similar breeding sites (Rotheray, 1994). Thus, saproxylic species are placed here in a separate guild due to their specific association with usually mature or dead trees and their ecological and conservation implications in woodlands (Speight, 1989). When the larva is unknown, the guild is inferred from other congeneric species with known larvae.

The adult phenology of the collected species of Syrphidae at El Ventorrillo is represented on Table 1 in comparison

with their phenology in Europe, taken from Speight (2020). For *Chrysotoxum volaticum* Ségué, 1961 the phenology in Europe follows Van Steenis *et al.* (2020). For the biogeographic assessment, the classification in European biogeographical zones of Speight *et al.* (2016) was used. An assessment of the conservation status of the hoverfly community at El Ventorrillo was also performed based on the threaten categories in Speight *et al.* (2016) for the European continent. In Speight *et al.* (2016) species are coded for a given threat category as 1, 2 or 3. If a species was coded in two categories, the category with highest code was chosen in our analysis. If Speight *et al.* (2016) used the same code twice for a given species (eg., '2, decreasing' + '2, unthreatened' for species A), the category implying a higher level of threat was selected (eg., species A 'decreasing'). *Chrysotoxum* sp. near *C. vernale* and *Chrysotoxum volaticum* were excluded from the biogeographic and conservation assessments due to lack of information.

Checklist of the Sierra de Guadarrama Syrphidae species

The hoverfly checklist for the Sierra de Guadarrama was elaborated in a table (Appendix), by revising all literature with records from localities in the Sierra de Guadarrama, i.e. Gil-Collado (1930), Peris (1962), Marcos-García & Louis (2001), Marcos-García *et al.* (2007), and Van Steenis & Lucas (2011). For references prior to 1930, see Gil-Collado (1930). All localities mentioned in the checklist belong to Sierra de Guadarrama, Madrid province, except for El Espinar, La Granja/San Ildefonso (any of these two names refer to the same locality), San Rafael, and Valsain, which belong to the Sierra de Guadarrama, Segovia province (Fig. 1). In the table, 'Sierra de Guadarrama (gen.)' is used when the published locality for a bibliographic record is just 'Sierra de Guadarrama', except for *Volucella zonaria* (Poda, 1761) that is assumed to occur in Sierra de Guadarrama just due to its supposed widespread distribution (Gil-Collado, 1930; Ricarte & Marcos-García, 2017). In the checklist, all other species recorded from Madrid province are also listed (Ricarte & Marcos-García, 2017; Grković *et al.*, 2019; Van Steenis *et al.*, 2020), in such a way that a checklist of the Syrphidae from the Madrid province can be produced by excluding the species present on the Segovian side of Sierra de Guadarrama, but absent from the Madrid province.

RESULTS

Hoverfly records from El Ventorrillo

All examined specimens or lots of specimens share the following data: 'CEUA; Spain, Madrid, Sierra

de Guadarrama, El Ventorrillo Biological Station, 40°45'11.36"N 4°1'17.19"W; Leg.: J. L. Nieves-Aldrey & C. Rey-del-Castillo'.

BRACHYPALPUS Macquart, 1834 (Eristalinae) (New to Madrid)

Brachypalpus laphriformis (Fallén, 1816) (New to Madrid)

Material examined: 1 male; 7-14.7.1989.

Guild: Saproxyllic.

CALLICERA Panzer, 1806 (Eristalinae)

Callicera macquarti Rondani, 1844 (New to Madrid)

Material examined: 1 female; 1-7.5.1990.

Guild: Saproxyllic (larva undescribed).

Callicera rufa Schummel, 1842

Material examined: 1 female; 1-7.9.1989.

Guild: Saproxyllic.

CHEILOSIA Meigen, 1822 (Eristalinae)

Cheilisia gigantea (Zetterstedt, 1838) (New to Madrid)

Material examined: 1 female; 1-7.5.1990. – 1 female; 15-22.5.1990. – 1 female; 1-6.6.1990.

Guild: Phytophagous.

Cheilisia laticornis Rondani, 1857

Material examined: 1 male; 11-20.4.1990. – 1 female; 1-6.vi.1990.

Guild: Phytophagous (larva undescribed).

Cheilisia proxima (Zetterstedt, 1843) (New to Madrid)

Material examined: 1 female; 1-6.6.1990.

Guild: Phytophagous.

CHRYSOTOXUM Meigen, 1803 (Syrphinae)

Chrysotoxum volaticum Séguy, 1961

Material examined: 3 males; 22-30.6.1989. – 3 males; 31.6–6.7.1989. – 3 males; 7-14.7.1989. – 3 males; 14-21.7.1989. – 1 female; 11-18.8.1989.

Guild: Zoophagous (larva undescribed).

Chrysotoxum cisalpinum Rondani, 1845

Material examined: 1 male; 7-14.7.1989. – 2 males; 11-18.8.1989.

Guild: Zoophagous (larva undescribed).

Chrysotoxum festivum (Linnaeus, 1758)

Material examined: 1 male; 7-14.7.1989. – 1 male; 14-21.7.1989.

Guild: Zoophagous (larva undescribed).

Chrysotoxum intermedium Meigen, 1822

Material examined: 1 male; 9-16.6.1989. – 2 males; 7-14.7.1989. – 2 females; 15-22.5.1990. – 1 male; 1-6.6.1990.

Guild: Zoophagous (larva undescribed).

Chrysotoxum latifasciatum Becker, 1921

Material examined: 1 male; 9-16.6.1989. – 1 male; 31.6-6.7.1989. – 2 males; 7-14.7.1989. – 1 male; 14-21.7.1989. – 1 female; 28.7-4.8.1989. – 1 female; 1-6.6.1990.

Guild: Zoophagous (larva undescribed).

Chrysotoxum octomaculatum Curtis, 1837

Material examined: 1 male; 22-30.6.1989. – 2 males; 31.6–6.7.1989. – 6 males; 7-14.7.1989. – 6 males; 14-21.7.1989. – 2 females; 28.7-4.8.1989. – 1 male; 15-22.5.1990.

Guild: Zoophagous (larva undescribed).

Chrysotoxum sp. near *vernale* Loew, 1841 (New to Madrid)

Fig. 6C

Material examined: 1 male, 9-16.6.1989. – 1 female; 22-30.6.1989. – 1 female; 14-21.7.1989. – 1 female; 22-30.3.1990. – 1 female; 11-20.4.1990. – 1 male and 2 females; 15-22.5.1990. – 2 females; 23-31.5.1990. – 1 male and 3 females; 1-6.6.1990.

Guild: Zoophagous (larva undescribed).

Remarks: This species is currently being described by Nedeljković *et al.* (in press).

DASYSYRPHUS Enderlein, 1938 (Syrphinae)

Dasy syrphus albostrigatus (Fallén, 1817)

Fig. 6D

Material examined: 5 females; 9-16.6.1989. – 1 male; 22-30.6.1989. – 2 males and 1 female; 14-21.7.1989; 2 males and 2 females (all discarded); 25-31.8.1989. – 4 males and 2 females; 1-7.9.1989. – 1 female (discarded); 14-21.11.1989. – 1 male and 1 female; 21-28.9.1989. – 1 male; 23-31.5.1990.

Guild: Zoophagous.

Dasy syrphus pauxillus (Williston, 1887) (New to Madrid)

Material examined: 1 male; 9-16.6.1989. – 4 males and 1 female; 23-31.5.1990. – 2 males; 1-6.6.1990.

Guild: Zoophagous (larva undescribed).

Dasy syrphus tricinctus (Fallén, 1817) (New to Madrid)

Material examined: 1 male; 1-6.6.1990.

Guild: Zoophagous.

DIDEA Macquart, 1834 (Syrphinae) (New to Madrid)

Didea intermedia Loew, 1854 (New to Madrid)

Material examined: 1 female (discarded); 25-31.8.1989. – 1 female; 1-7.9.1989.

Guild: Zoophagous.

EPISYRPHUS Matsumura & Adachi, 1917 (Syrphinae)

Episyrphus balteatus (De Geer, 1776)

Material examined: 1 male and 1 female; 7-14.7.1989. – 19 males and 9 females, 14-21.7.1989. – 1 male and 5 females; 20-28.7.1989. – 5 females (1 female discarded);

28.7-4.8.1989. – 2 females; 11-18.8.1989. – 1 female (discarded); 25-31.8.1989. – 1 male; 11-20.4.1990. – 2 males and 2 females; 15-22.5.1990. – 8 males and 1 female; 23-31.5.1990. – 1 male; 1-6.6.1990.

Guild: Zoophagous.

ERISTALIS Latreille, 1804 (Eristalinae)

***Eristalis arbustorum* (Linnaeus, 1758)**

Material examined: 1 male; 31.6-6.7.1989. – 1 male and 1 female; 7-14.7.1989. – 1 female; 14-21.7.1989. – 1 female; 28.7-4.8.1989.

Guild: Saprophagous.

***Eristalis horticola* (De Geer, 1776)**

Material examined: 1 female; 7-14.7.1989. – 2 males; 14-21.7.1989.

Guild: Saprophagous.

***Eristalis similis* (Fallén, 1817)**

Material examined: 2 males and 1 female; 14-21.7.1989.

Guild: Saprophagous.

***Eristalis tenax* (Linnaeus, 1758)**

Material examined: 1 male; 7-14.7.1989. – 1 male; 14-21.7.1989. – 1 male (discarded); 14-21.11.1989.

Guild: Saprophagous.

EUMERUS Meigen, 1822 (Eristalinae)

***Eumerus consimilis* Šimić & Vujić, 1996** (New to Madrid)

Material examined: 1 male and 1 female; 1-7.9.1989.

Guild: Phytophagous (larva undescribed).

***Eumerus sabulonum* (Fallén, 1817)**

Material examined: 1 male and 1 female; 9-16.6.1989.

Guild: Phytophagous (larva undescribed).

***Eumerus sulcitibius* Rondani, 1868** (New to Madrid)

Material examined: 1 female; 1-6.6.1990.

Guild: Phytophagous (larva undescribed).

EUPEODES Osten Sacken, 1877 (Syrphinae)

***Eupeodes corollae* (Fabricius, 1794)**

Material examined: 2 males and 16 females; 9-16.6.1989. – 7 females; 22-30.6.1989. – 2 males and 3 females (2 males and 2 females discarded); 31.6-6.7.1989. – 65 males and 87 females; 14-21.7.1989. – 5 males and 26 females; 20-28.7.1989. – 1 male and 54 females; 7-14.8.1989. – 12 males and 22 females (4 males and 10 females discarded); 28.7-4.8.1989. – 1 male and 16 females; 11-18.8.1989. – 3 females (discarded); 25-31.8.1989. – 1 female; 1-7.9.1989. – 1 female (discarded); 11-25.10.1989. – 1 female; 21-28.9.1989. – 1 female (discarded); 2-9.11.1989. – 2 females (discarded); 14-21.11.1989. – 1 male and 1 female; 11-20.4.1990. – 1 male and 10 females; 15-22.5.1990. – 1 male and 7 females; 23-31.5.1990. – 1 male and 1 female; 1-6.6.1990.

Guild: Zoophagous.

***Eupeodes latifasciatus* (Macquart, 1829)** (New to Madrid)

Material examined: 3 females; 9-16.6.1989. – 2 males and 1 female; 7-14.7.1989. – 3 females; 21-28.9.1989.

Guild: Zoophagous.

***Eupeodes luniger* (Meigen, 1822)**

Material examined: 2 females; 9-16.6.1989. – 1 female; 7-14.7.1989. – 2 females; 14-21.7.1989. – 1 male; 20-28.7.1989. – 1 male; 7-15.5.1990.

Guild: Zoophagous.

MELANOSTOMA Schiner, 1860 (Syrphinae)

***Melanostoma mellinum* (Linnaeus, 1758)**

Material examined: 2 males and 10 females; 9-16.6.1989. – 4 females; 22-30.6.1989. – 1 female (discarded); 31.6-6.7.1989. – 17 males and 6 females; 14-21.7.1989. – 13 males and 4 females; 20-28.7.1989. – 4 males and 5 females; 28.7-4.8.1989. – 7-14.8.1989. – 1 male; 11-18.8.1989. – 4 males and 5 females; 15-22.5.1990. – 30 males and 9 females; 23-31.5.1990. – 6 males and 7 females; 1-6.6.1990.

Guild: Zoophagous.

***Melanostoma scalare* (Fabricius, 1794)**

Material examined: 1 female; 9-16.6.1989. – 4 females; 22-30.6.1989. – 5 males and 10 females; 14-21.7.1989. – 1 male and 4 females; 20-28.7.1989. – 1 male and 2 females; 28.7-4.8.1989. – 2 males and 12 females; 7-14.8.1989. – 1 male and 1 female; 11-18.8.1989. – 1 female; 1-7.9.1989. – 1 male and 1 female; 15-22.5.1990. – 7 males and 10 females; 23-31.5.1990. – 1 female; 1-6.6.1990.

Guild: Zoophagous.

MELISCAEVA Frey, 1946 (Syrphinae)

***Meliscaeva auricollis* (Meigen, 1822)**

Material examined: 1 male; 22-30.6.1989. – 12 males; 7-14.7.1989. – 65 males and 13 females; 14-21.7.1989. – 1 male; 20-28.7.1989. – 3 males; 28.7-4.8.1989. – 1 female; 1-7.9.1989. – 1 male and 1 female; 21-28.9.1989. – 1 male; 23-31.5.1990. – 1 male; 1-6.6.1990.

Guild: Zoophagous.

MERODON Meigen, 1803 (Eristalinae)

***Merodon ibericus* Vujić in Popović et al., 2015** (New to Madrid)

Material examined: 1 male and 2 females; 7-14.7.1989. – 3 males; 14-21.7.1989.

Guild: Phytophagous (larva undescribed).

***Merodon unguicornis* Strobl, 1909 in Czerny & Strobl, 1909**

Material examined: 1 female; 22-30.6.1989. – 2 females; 15-22.5.1990. – 1 female; 23-31.5.1990. – 3 females; 1-6.6.1990.

Guild: Phytophagous (larva undescribed).

Merodon unicolor* Strobl in Czerny & Strobl, 1909*Material examined:** 4 males; 23-31.5.1990.**Guild:** Phytophagous (larva undescribed).*NEOASCIA* Williston, 1887 (Eristalinae)***Neoascia podagrica* (Fabricius, 1775)****Material examined:** 2 females; 15-22.5.1990.**Guild:** Saprophagous.*PARAGUS* Latreille, 1804 (Syrphinae)***Paragus bicolor* (Fabricius, 1794)****Material examined:** 1 female; 28.7-4.8.1989. – 1 female; 1-6.6.1990.**Guild:** Zoophagous (larva undescribed).***Paragus pecchiolii* Rondani, 1857** (New to Madrid)**Material examined:** 1 male; 14-21.7.1989.**Guild:** Zoophagous.***Paragus strigatus* Meigen, 1822****Material examined:** 1 female; 9-16.6.1989.**Guild:** Zoophagous (larva undescribed).*PARASYRPHUS* Matsumura in Matsumura & Adachi, 1917 (Syrphinae)***Parasyrphus punctulatus* (Verrall, 1873)** (New to Madrid)**Material examined:** 1 male; 7-15.5.1990.**Guild:** Zoophagous.*PELECOCERA* Meigen, 1822 (Eristalinae)***Pelecocera caledonica* (Collin, 1940)** (New to Madrid)**Material examined:** 1 female; 21-28.9.1989. – 1 male; 1-6.6.1990.**Guild:** Phytophagous (larva undescribed).*PLATYCHEIRUS* Lepeletier & Serville, 1828 (Syrphinae)***Platycheirus albimanus* (Fabricius, 1781)****Material examined:** 1 female; 14-21.7.1989. – 1 female; 20-28.7.1989.**Guild:** Zoophagous.***Platycheirus scutatus* (Meigen, 1822)** (New to Madrid)**Material examined:** 1 female; 31.6-6.7.1989. – 1 female; 28.7-4.8.1989. – 2 males; 15-22.5.1990. – 1 male; 1-6.6.1990.**Guild:** Zoophagous.*SCAEVA* Fabricius, 1805 (Syrphinae)***Scaeva pyrastris* (Linnaeus, 1758)****Material examined:** 1 female; 22-30.6.1989. – 1 female (discarded); 31.6-6.7.1989. – 1 male (discarded); 14-21.7.1989. – 1 female; 21-28.9.1989. – 1 female; 14-21.11.1989.**Guild:** Zoophagous.*SPHAEROPHORIA* Lepeletier & Serville, 1828 (Syrphinae)***Sphaerophoria scripta* (Linnaeus, 1758)****Material examined:** 6 males and 9 females; 9-16.6.1989. – 11 males and 25 females; 22-30.6.1989. – 21 males and 39 females (discarded); 31.6-6.7.1989. – 50 males; 7-14.7.1989. – 156 males and 203 females; 14-21.7.1989. – 112 males and 165 females; 20-28.7.1989. – 70 males and 130 females (39 males and 66 females discarded); 28.7-4.8.1989. – 51 males; 7-14.8.1989. – 1 male and 3 females; 11-18.8.1989. – 1 female; 14-22.3.1990. – 2 females; 7-15.5.1990. – 3 males and 23 females; 15-22.5.1990. – 18 males and 35 females; 23-31.5.1990. – 9 males and 6 females; 1-6.6.1990.**Guild:** Zoophagous.*SYRITTA* Lepeletier & Serville, 1828 (Eristalinae)***Syritta pipiens* (Linnaeus, 1758)****Material examined:** 1 female; 28.7-4.8.1989.**Guild:** Saprophagous.*SYRPHUS* Fabricius, 1775 (Syrphinae)***Syrphus ribesii* (Linnaeus, 1758)****Material examined:** 1 female; 9-16.6.1989. – 2 females; 22-30.6.1989. – 1 female; 31.6-6.7.1989. – 1 male and 1 female; 7-14.7.1989. – 1 male and 1 female; 14-21.7.1989. – 1 male; 20-28.7.1989.**Guild:** Zoophagous.***Syrphus torvus* Osten Sacken, 1875****Material examined:** 2 females; 9-16.6.1989. – 1 male and 2 females; 14-21.7.1989. – 1 male; 20-28.7.1989.**Guild:** Zoophagous.***Syrphus vitripennis* Meigen, 1822****Material examined:** 1 female; 21-28.9.1989. – 1 male; 15-22.5.1990.**Guild:** Zoophagous.*VOLUCELLA* Geoffroy, 1762 (Eristalinae)***Volucella elegans* Loew, 1862****Material examined:** 1 male; 7-14.7.1989.**Guild:** Zoophagous (larva undescribed).*XANTHANDRUS* Verrall, 1901 (Syrphinae)***Xanthandrus comtus* (Harris, 1780)****Material examined:** 1 male; 14-21.7.1989.**Guild:** Zoophagous.*XANTHOGRAMMA* Schiner, 1860 (Syrphinae)***Xanthogramma dives* (Rondani, 1857)** (New to Madrid)**Material examined:** 1 female; 11-18.8.1989. – 1 female; 21-28.9.1989.**Guild:** Zoophagous (larva undescribed).

Guilds, phenology, biogeography and conservation

In the Malaise trap samples, hoverflies of 51 species were collected, with 31 species of Syrphinae and 20 of Eristalinae (Table 1 and Appendix). Neither Microdontinae nor Pipizinae were collected. Zoophagous dominated both in species richness and abundance. In fact, a minimal proportion of individuals (below 3%) belonged to guilds other than zoophagous (Fig. 3). Many species such as *Cheilosia laticornis* were recorded just from a short length of time within their

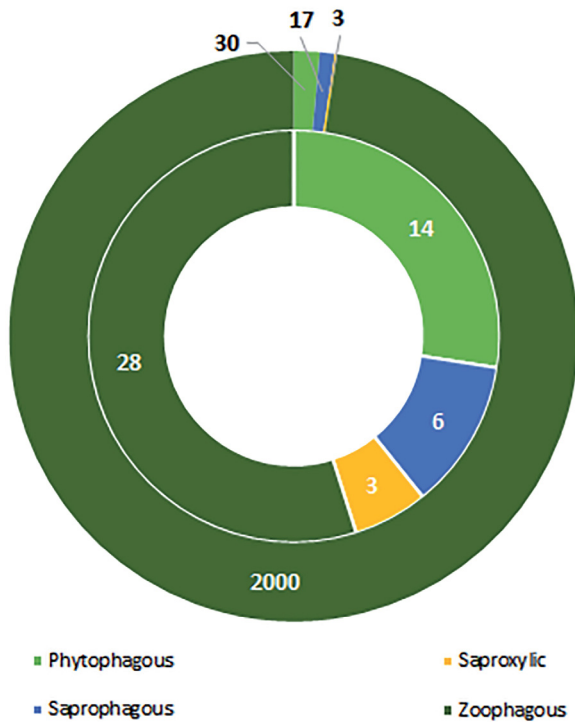


Fig. 3. Guild diversity of El Ventorrillo hoverflies. Inner circle, for species richness; outer circle, for abundance. ‘Saproxylic’ is used for saprophagous species depending on trees.

flight period in Europe (Table 1). *Callicera macquarti* flies in June and September/October, but the female reported here was caught in early May. In a similar way, *Callicera rufa* is known to fly from mid May to August and the female recorded at El Ventorrillo was collected in early September. *Didea intermedia* was collected in September, one month after its flight period ends in Europe. For *Merodon unicolor* and *Chrysotoxum volaticum*, sub-populations from North Africa were also considered in the ‘European’ phenology. The phenology of *Chrysotoxum intermedium* is not provided since the taxonomy of this species is unresolved and several close taxa may exist under this name.

Most species collected at El Ventorrillo are typical for the Mediterranean zone of Europe (45 out of 51 spp.) closely followed by species occurring mainly in the Atlantic and Continental zones (40 spp. each). The lowest number of species are characterized having Macaronesian (16 spp.) and Arctic (12 spp.) distributions (Fig. 4). The majority of species recorded are unthreatened, four are decreasing

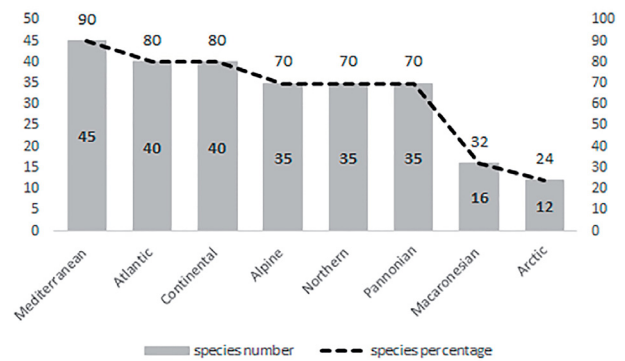
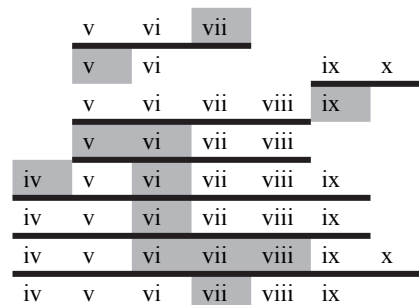


Fig. 4. Biogeographic diversity of El Ventorrillo hoverflies. Species known to be present in each biogeographic zone of Europe, expressed both in species richness (within grey bar) and percentage (above bar) calculated from the total number of species found at El Ventorrillo. Notice that a species can be present in more than one biogeographic zone.

Table 1. Phenology of El Ventorrillo hoverflies. The flight period of adults in Europe is indicated with a black line while El Ventorrillo flight period is indicated in grey. Months: i, January; ii, February; iii, March; iv, April; v, May; vi, June; vii, July; viii, August; ix, September; x, October; xi, November; xii, December.

Eristalinae

- Brachypalpus laphriformis*
- Callicera macquarti*
- Callicera rufa*
- Cheilosia gigantea*
- Cheilosia laticornis*
- Cheilosia proxima*
- Eristalis arbustorum*
- Eristalis horticola*



<i>Eristalis similis</i>	ii	iii	iv	v	vi	vii	viii	ix	x	xi		
<i>Eristalis tenax</i>	ii	iii	iv	v	vi	vii	viii	ix	x	xi		
<i>Eumerus consimilis</i>				v	vi		viii	ix				
<i>Eumerus sabulonum</i>				v	vi	vii	viii					
<i>Eumerus sulcitibius</i>			iv	v	vi	vii	viii	ix				
<i>Merodon ibericus</i>					vi	vii						
<i>Merodon unguicornis</i>			iv	v	vi	vii						
<i>Merodon unicolor</i>			iv	v	vi	vii	viii	ix				
<i>Neoscia podagrica</i>		iii	iv	v	vi	vii	viii	ix	x			
<i>Pelecocera caledonica</i>					vi	vii	viii	ix	x			
<i>Syritta pipiens</i>	i	ii	iii	iv	v	vi	vii	viii	ix	x	xi	xii
<i>Volucella elegans</i>				v	vi	vii	viii	ix	x			
Syrphinae												
<i>Chrysotoxum volaticum</i>				v	vi	vii	viii					
<i>Chrysotoxum cisalpinum</i>				v	vi	vii	viii	ix	x			
<i>Chrysotoxum festivum</i>				v	vi	vii	viii	ix	x			
<i>Chrysotoxum intermedium</i>				v	vi	vii						
<i>Chrysotoxum latifasciatum</i>					vi	vii	viii					
<i>Chrysotoxum octomaculatum</i>				v	vi	vii	viii	ix				
<i>Chrysotoxum</i> sp. near <i>vernale</i>		iii	iv	v	vi	vii						
<i>Dasysyrphus albostrigatus</i>			iv	v	vi	vii	viii	ix				
<i>Dasysyrphus pauxillus</i>			iv	v	vi	vii						
<i>Dasysyrphus tricinctus</i>			iv	v	vi	vii	viii	ix	x			
<i>Didea intermedia</i>				v	vi	vii	viii	ix	x			
<i>Episyrphus balteatus</i>	ii	iii	iv	v	vi	vii	viii	ix	x	xi		
<i>Eupeodes corollae</i>	ii	iii	iv	v	vi	vii	viii	ix	x	xi		
<i>Eupeodes latifasciatus</i>				v	vi	vii	viii	ix				
<i>Eupeodes luniger</i>	ii	iii	iv	v	vi	vii	viii	ix	x	xi	xii	
<i>Melanostoma mellinum</i>			iv	v	vi	vii	viii	ix	x			
<i>Melanostoma scalare</i>			iv	v	vi	vii	viii	ix	x			
<i>Meliscaeva auricollis</i>	ii	iii	iv	v	vi	vii	viii	ix	x	xi		
<i>Paragus bicolor</i>				v	vi	vii	viii					
<i>Paragus pecchiolii</i>		iii	iv	v	vi	vii	viii	ix	x			
<i>Paragus strigatus</i>			iv	v	vi	vii	viii	ix				
<i>Parasyrphus punctulatus</i>			iv	v	vi	vii						
<i>Platycheirus albimanus</i>		iii	iv	v	vi	vii	viii	ix	x	xi		
<i>Platycheirus scutatus</i>			iv	v	vi	vii	viii	ix	x			
<i>Scaeva pyrastris</i>	ii	iii	iv	v	vi	vii	viii	ix	x	xi		
<i>Sphaerophoria scripta</i>		iii	iv	v	vi	vii	viii	ix	x	xi		
<i>Syrphus ribesii</i>		iii	iv	v	vi	vii	viii	ix	x	xi		
<i>Syrphus torvus</i>		iii	iv	v	vi	vii	viii	ix	x			
<i>Syrphus vitripennis</i>			iv	v	vi	vii	viii	ix	x			
<i>Xanthandrus comtus</i>			iv	v	vi	vii	viii	ix	x	xi		
<i>Xanthogramma dives</i>				v	vi	vii	viii	ix				

in number of populations or range at the European level (*Callicera rufa*, *Chrysotoxum cisalpinum*, *C. octomaculatum* and *Eumerus consimilis*), and two are probably threatened with extinction (*Callicera macquarti* and *Pelecocera caledonica*). The latter two species were represented by singletons or doubletons in the sample. *Chrysotoxum intermedium*, *C. latifasciatum*, *Merodon ibericus*, and *M. unguicornis* are regarded as data deficient in Europe.

Hoverfly fauna of Sierra de Guadarrama

With this study, 21 species are added to the checklist of the hoverflies of the Sierra de Guadarrama that is updated now to a total of 126 species (see Appendix). The genera *Brachypalpus*, *Didea*, *Dasysyrphus*, *Neoascia*, *Parasyrphus*, *Syrirta*, and *Xanthandrus* are reported for the first time from Sierra de Guadarrama. Peris (1962) excluded *S. lappona* from the Spanish fauna of *Sericomyia*, but apparently he did not examine the material of *S. lappona* from El Escorial reported by Gil-Collado (1930). Thus, we retain *S. lappona* in the Sierra de Guadarrama checklist until this genus is revised in the Iberian Peninsula. The record of *Chrysotoxum bicinctum* (Linnaeus, 1758) from Cercedilla is likely to be a misidentification of *C. volaticum* but we retain

C. bicinctum in the Sierra de Guadarrama – and Madrid – checklist until the material from Cercedilla is revised. Although *Syrirta pipiens* is one of the most common hoverflies in Spain (Gil-Collado, 1930; Ricarte & Marcos-García, 2017) and it is most likely to occur everywhere in Sierra de Guadarrama, the specimen reported here represents the first documented record from Sierra de Guadarrama. In the Malaise trap inventory discussed here, 40% of the species found in the Sierra de Guadarrama are represented.

Within the Sierra de Guadarrama, El Escorial is the locality with the highest number of species recorded (64 spp.), followed by El Ventorrillo (51 spp.), both in Madrid province. Valle del Paular and Navacerrada, also in Madrid, are clearly under-recorded (one species each). La Granja/San Ildefonso is the Segovian locality in Sierra de Guadarrama with the highest number of species recorded, although the absolute number is still low (19 spp.) (Fig. 5). In 11 out of 14 localities of Sierra de Guadarrama, 50% or more of the collected species are eristalines, but the only locality sampled with a systematic technique, El Ventorrillo, has a higher proportion of syrphine species than eristaline species (61% vs. 39%). The hoverfly diversities in all the mentioned localities (Fig. 5) are not comparable with each other due to different sampling efforts and techniques used by the different collectors over time. However, Fig. 5 is still

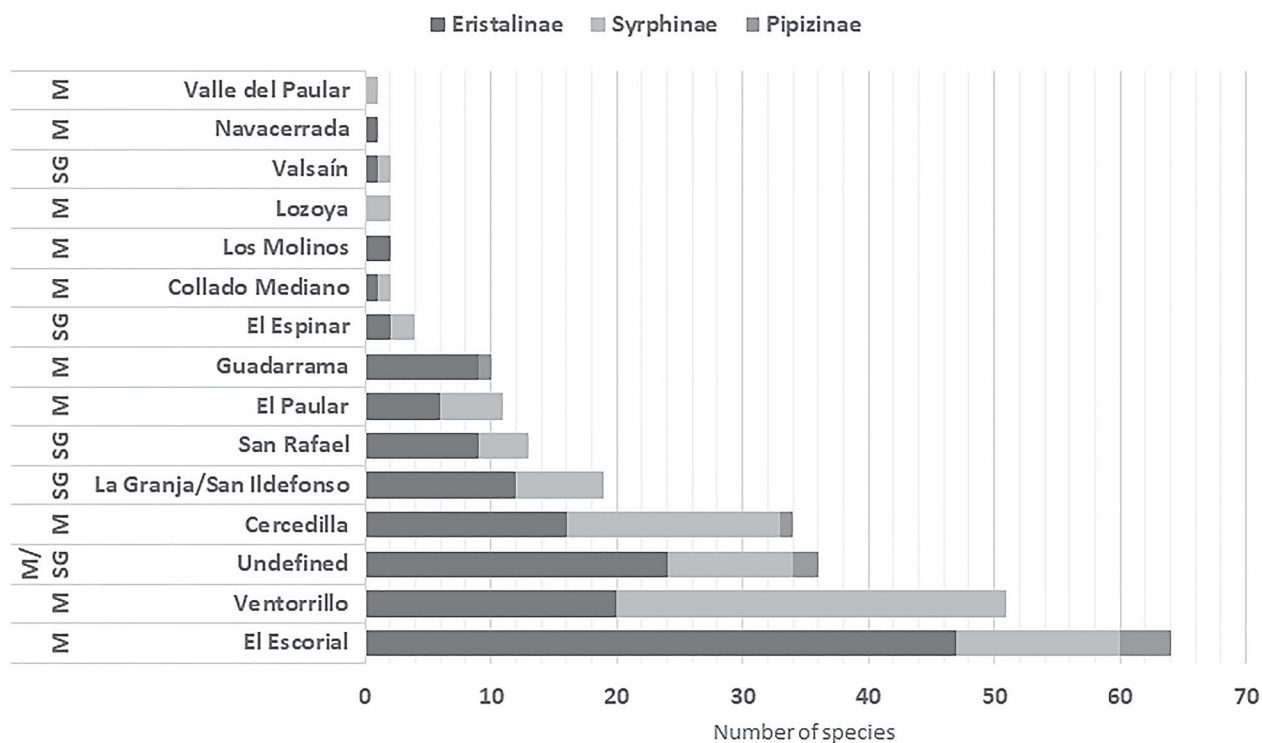


Fig. 5. Hoverfly diversity of Sierra de Guadarrama (species richness). All localities with hoverfly records in the literature are included. The category 'undefined' refers to unspecified localities within Sierra de Guadarrama. M, Madrid province; SG, Segovia province.

useful in understanding how uneven hoverfly knowledge is in Sierra de Guadarrama and to show basic tendencies based on Malaise trap sampling.

In this study, 17 species and two genera are new to Madrid province and the checklist of the Syrphidae from this province consists now of 150 species (Appendix). Madrid is still the third Spanish province in hoverfly species richness, after León (182 spp.) (Ricarte & Marcos-García, 2017) and Salamanca (152 spp.) (Ricarte *et al.*, 2018). In the Malaise trap catch of El Ventorrillo, 34% of species found in the Madrid province are

represented. Following the present study, microdontines are still unknown to the province of Madrid.

DISCUSSION

In this study, 17 hoverfly species and two genera were found to be new to Madrid province from a Malaise trap catch originating from El Ventorrillo, Sierra de Guadarrama, dating from 1989-1990. One of the most remarkable aspects brought to light by these results is the

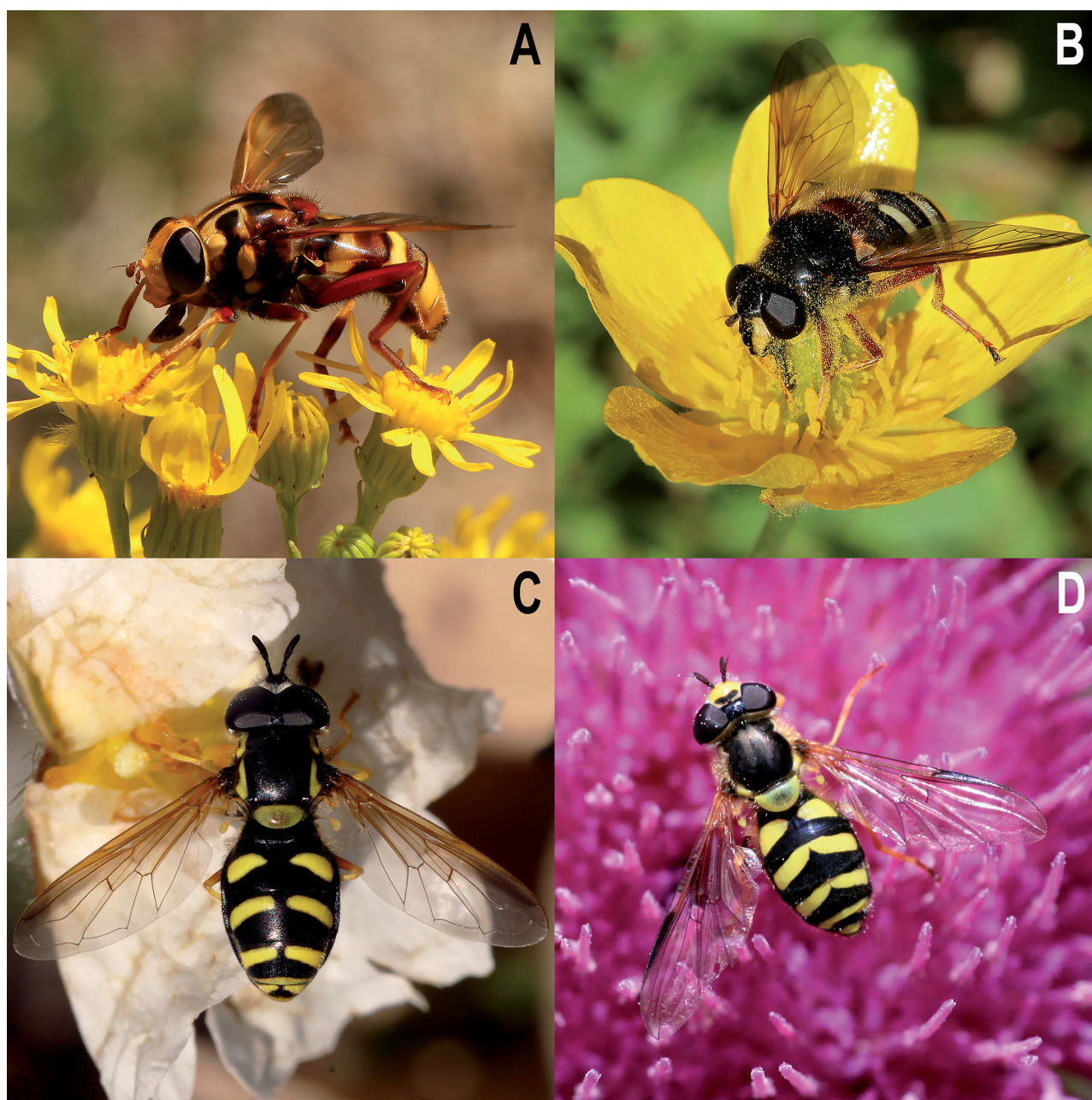


Fig. 6. Hoverfly species from Sierra de Guadarrama. (A) *Malesia crabroniformis*, female, Puerto de Navacerrada. (B) *Sericomyia hispanica*, female, Puerto de Navacerrada. (C) *Chrysotoxum* sp. near *vernale*, male, Puerto de la Morcuera. (D) *Dasysyrphus albostriatus*, female. Photos A, B, D by Piluca Álvarez-Fidalgo, C by Marián Álvarez-Fidalgo.

lack of long term surveys of the hoverfly fauna of Madrid since 1989. Only a few species have been reported from Madrid in scattered publications in the last 30 years (see some examples in Appendix). On the one hand, these results show how important long term surveys are even in a province whose hoverfly diversity is thought to be well known (Ricarte & Marcos-García, 2017). On the other hand, the finding of 21 species new to Sierra de Guadarrama suggests the high potential of this location within the Iberian Peninsula for hoverfly diversity studies, as shown by other insect groups (Lobo & Martin-Piera, 2002; Nieves-Aldrey *et al.*, 2003).

The hoverfly community of El Ventorrillo was represented in the Malaise trap catch by 51 species, most of them Mediterranean faunistic elements (Fig. 4), without records of Microdontinae and Pipizinae. Syrphinae were dominant in the samples, with more than half of the species (31 spp.) and individuals of Syrphidae identified (1999 out of 2050). These results were consistent with previous findings. For example, syrphines appear to be less specialised in flower visitation than other subfamilies (Klecka *et al.*, 2018) and this fact is likely to facilitate a higher species diversity of syrphines with no regard of the plant community found in a study site. Syrphines are also known to be more diverse in forests than in other habitats (Branquart & Hemptinne, 2000). The Malaise trap used in the present study was placed in a grassland/forest edge, so an influence from the forest community of syrphines was expected in the Malaise trap catch.

Sphaerophoria scripta and *Eupeodes corollae*, both of them syrphines, were the most abundant species in the sample, with 1146 and 351 specimens collected. These two species were not only abundant, but also occurred during a long period throughout the year, 5-6 months (Table 1). Sadeghi & Husseini (2009) also found in Iran that Malaise samples were clearly dominated by these two common species plus *Episyrphus balteatus*. The high ecological success of *S. scripta* and *E. corollae* is, without doubt, mediated by the high spectrum of prey of their zoophagous larvae, found in a wide range of plants, from herbs to trees (Rojo *et al.*, 2003). In fact, zoophagous hoverflies dominate our Malaise trap sample from El Ventorrillo (Fig. 3).

Eristalines were more rarely collected than syrphines at El Ventorrillo, both in number of species and individuals. In addition, they had a shorter period of occurrence in the samples, of 1-2 months in most species (Table 1). This lower number of eristalines in the Malaise samples, with genera found in Sierra de Guadarrama poorly represented or even absent (see Appendix) is a consequence of the rarity and behaviour of some species. For example, *Volucella* hoverflies are frequently found flying high (Speight, 2020) and this behaviour reduces the chance for them to get captured with Malaise traps (just one specimen of *Volucella* in this Malaise catch). Saproxyllic species such as those of *Spilomyia* are never abundant, their larvae live in tree rot-holes and adults visit flowers in grassy

clearings (Speight, 2020). In a one-year long sampling with six Malaise traps in the woodlands of Cabañeros National Park (Ciudad Real) just two specimens of *Spilomyia* were collected (Ricarte, 2008). In general, Burgio & Sommaggio (2002, 2007) and Sommaggio & Burgio (2003) found that Malaise traps are less effective in catching saprophagous hoverflies (all saprophagous species are eristalines) than zoophagous (zoophagous species are syrphines, pipizines, microdontines, and a few *Volucella* species, which are eristalines).

Regarding the absence of Microdontinae and Pipizinae, we dismiss an overlook of these groups when sorting the Malaise catches because the person in charge was able to extract genera that can go unnoticed for someone with insufficient experience due to the small size and/or uniformly dark colouration of these flies: *Cheilisia*, *Eumerus*, *Neoascia*, *Paragus*, *Platycheirus*, and *Syritta*. That said, no *Microdon* species has ever been collected in Madrid and adjacent provinces (Ricarte & Marcos García, 2017). This lack of information on *Microdon* from this part of Spain is most likely to be an artefact of the sampling techniques and collectors. Microdontines are rarely collected and their capture frequency with Malaise traps is low (Reemer, 2012). For example, two *Microdon* species occur in the Cévennes national park, France, but they were not collected in a two-year long study with two Malaise traps within the park (Descaves, 2016). The difficulty to catch microdontines with Malaise traps is likely due to the low mobility and behaviour of *Microdon* adults: some European species disperse just a few meters from their natal ant nests and, in addition, females appear to walk more than fly (Schönrogge *et al.*, 2006; Wolton, 2011).

Pipizines is the other subfamily not represented in the Malaise catch of El Ventorrillo. Seven pipizine species are recorded from Madrid, five of them in Sierra de Guadarrama. However, records of all but one species are old (1930 or earlier) (Ricarte & Marcos-García, 2017); *Pipizella lynborgi* Torp Pedersen, 1971, the exception, was recorded from a female collected in El Escorial in 1973 (Van Steenis & Lucas, 2011). The pipizine genus with the highest number of species recorded in Madrid is *Pipizella* Rondani, 1856 (see Appendix). The larvae of this genus are zoophagous in ant-attended aphids, but the larvae of most *Pipizella* species are unknown (Speight, 2020). Pipizines also appear to be rarely collected in Malaise traps. For example, in Cabañeros (Spain) no pipizine was collected with 10 Malaise traps in five different types of habitats during a year (Ricarte, 2008). In the Cévennes (France) just 1.4% of all collected hoverflies were pipizines (*Pipiza* + *Pipizella*) (Descaves, 2016). The absence of pipizines from the studied samples seem to be in accordance with the results of other Malaise-based surveys in Europe.

In this 1989-1990 Malaise trap sample from El Ventorrillo, 41% of the species known from Sierra de Guadarrama were collected. In the Cévennes national park's sampling

effort mentioned above, one trap/year collected an average of 39% of the species recorded from this national park (Descaves, 2016), which is a very similar proportion as that between El Ventorrillo and Sierra de Guadarrama. In addition, the Malaise traps used both in the Cévennes and El Ventorrillo failed in catching microdontines and had a low success in catching pipizines (none in El Ventorrillo), as explained above. From this and other studies (e.g. Sommaggio & Burgio, 2003; Ricarte, 2008; Descaves, 2016), it is obvious that Malaise traps do not provide a full inventory of species found in an area. However, the hoverflies of a Malaise trap catch represent the community of at least the two major subfamilies (Eristalinae and Syrphinae) and provide the means to compare the largest proportion of the hoverfly diversity of a site through time, as Malaise traps, if set up at the right location, allow a systematic sampling of easy repetition with no regard to the collector skills and experience. Thus, although for a full species inventory of an area different sampling techniques should be used (Ricarte, 2008; Marcos García *et al.*, 2012), Malaise traps provide an adequate experimental design and baseline to compare tendencies in the hoverfly diversity over time. We consider that the species sample presented here could be compared with future samples obtained from El Ventorrillo with a similar sampling design.

With 126 species, Sierra de Guadarrama has 83% of the species recorded from Madrid province, and this becomes the most diverse location of Madrid and adjacent provinces for hoverflies. This high hoverfly diversity is in accordance with the high levels of biodiversity reported for other insect groups in Sierra de Guadarrama (e.g., Lobo & Martín-Piera, 2002; Nieves-Aldrey *et al.*, 2003). However, the proximity of Madrid city has surely had an effect in the knowledge of biodiversity in Sierra de Guadarrama, because many collectors from the city have focused on this location for fieldwork along history; for example, collectors used to sample hoverflies in localities within Sierra de Guadarrama at least since the early twentieth century (Gil-Collado, 1930). Even nowadays, Sierra de Guadarrama is the preferred and most convenient area for city naturalists to monitor biodiversity (Fig. 6). This long history of surveys and monitoring together with the set of data provided here for El Ventorrillo makes Sierra de Guadarrama suitable for planning studies on the effects of Global change on the biodiversity of Syrphidae.

El Ventorrillo is a shelter for species of hoverflies with decreasing populations in Europe or even threatened with extinction. *Callicera macquarti* ('threatened') belongs to the saproxylic guild, with larvae developing in rot holes of mature trees (Ricarte *et al.*, 2009). Thus, forestry practices at El Ventorrillo and surroundings should allow trees to grow in size and develop holes, to promote the breeding of this rare species distributed around the Mediterranean. *Pelecocera caledonica* ('threatened') is present from Scandinavia and European Russia to Spain, where it was known only from Navarra (Speight, 2020). To propose

conservation actions for *P. caledonica* would be more difficult than for *C. macquarti* since its larval biology, although suspected to be phytophagous, is completely unknown; further research on the larval biology of *P. caledonica* is required. El Ventorrillo populations of these two species and those of the 'decreasing', *C. rufa*, *C. cisalpinum*, *C. octomaculatum*, and *E. consimilis*, should be monitored to better understand the population size and trend in this part of Europe.

ACKNOWLEDGMENTS

We are grateful to Carmen Rey-del-Castillo for helping with the Malaise trap sampling and sorting. We are also grateful to Diptera expert, Arabia Sánchez-Terrón (MNCN) for having separated the hoverflies from other Diptera. We thank Christian Kehlmaier to send us copies of his papers on Diptera from El Ventorrillo, and Piluca and Marián Álvarez-Fidalgo for allowing us to use their hoverfly photos. We also thank the reviewers for their useful comments to enhance the quality of this paper. English was kindly revised by Dr Martin Hauser (CDFA, USA). We thank Vicerrectorado de Investigación y Transferencia de Conocimiento, University of Alicante to fund Antonio Ricarte's position (UATAL05). This study belongs to the 'Fauna Ibérica' Project PGC2018-095851-A-C65A ('Ministerio de Ciencia, Innovación y Universidades', Spain).

REFERENCES

- Allué Andrade J.L. 1987. Memoria del mapa de subregiones fitoclimáticas [pp. 221-223]. In: Rivas Martínez S. (ed.), Memoria del mapa de series de vegetación de España (1:400.000). *Ministerio de Agricultura, Pesca y Alimentación (ICONA)*. Madrid, 268 pp.
- Becker T. 1921. Neue Dipteren meiner Sammlung. *Mitteilungen aus dem Zoologischen Museum in Berlin* 10: 1-93.
- Branquart E., Hemptinne J.-L. 2000. Selectivity in the exploitation of floral resources by hoverflies (Diptera: Syrphidae). *Ecography* 23: 732-742.
- Burgio G., Sommaggio D. 2002. Diptera Syrphidae caught by Malaise trap in Bologna province and new record of *Neoscasia interrupta* in Italy. *Bulletin of Insectology* 55(1-2): 43-47.
- Burgio G., Sommaggio D. 2007. Syrphids as landscape bioindicators in Italian agroecosystems. *Agriculture, Ecosystems and Environment* 120: 416-422.
- Collin J.E. 1940. Notes on Syrphidae (Diptera). IV. *The Entomologist's monthly magazine* 76: 150-158.
- Curtis J. 1837. British entomology. Vol. 14, pls 650-653. Privately published, London.
- Czerny L., Strobl P.G. 1909. Spanische Dipteren. III. *Verhandlungen der Zoologisch-Botanischen Gesellschaft in Wien* 59: 121-301.
- Darling D.C., Packer L. 1988. Effectiveness of Malaise traps in collecting Hymenoptera: The influence of trap design, mesh size, and location. *Canadian Entomologist* 120: 787-790.

- Descaves B. 2016. Diagnostic écologique de forêts de la vallée de la Haute Jonte (Lozère) par la méthode "Syrph the Net". *Syrph the Net, the database of European Syrphidae, Syrph the Net publications, Dublin*, Vol. 88, 69 pp.
- Enderlein G. 1938. Beitrag zur Kenntnis der Syrphiden. *Sitzungsberichte der Gesellschaft Naturforschender Freunde Berlin 1937*: 192-237.
- Fabricius J.C. 1775. *Systema entomologiae, sistens insectorum classes, ordines, genera, species, adiectis synonymis, locis, descriptionibus, observationibus*. Kortii, Flensburgi et Lipsiae [= Flensburg & Leipzig]. [32] + 832 pp.
- Fabricius J.C. 1781. *Species insectorum. Vol. 2*, C. E. Bohmii, Hamburgi et Kilonii [= Hamburg and Kiel], 494 pp.
- Fabricius J.C. 1794. *Entomologia systematica emendata et aucta*. C. G. Proft, Hafniae [=Copenhagen], Vol. 4, [6] + 472 + [5] pp.
- Fabricius J.C. 1805. *Systema antliatorum secundum ordines, genera, species*. C. Reichard, Brunsvigae [=Brunswick], xiv + 15-372 + [1] + 30 pp.
- Fallén C.F. 1816-1817. *Syrphici Sveciae. Berlingianis, Lundae* [= Lund], 1-14 [1816.06.08], 15-22 [1816.06.08], 23-30 [1817.05.10], 31-42 [1817.05.20], 43-54 [1817.05.21], 55-62 [1817.05.22] pp.
- Frey R. 1946. Übersicht der Gattungen der Syrphiden-Unterfamilie Syrphinae (Syrphine + Bacchinae). *Notulae Entomologicae* 25: 152-172.
- García-Barros E., Gurrea P., Lucíañez M.J., Martín-Cano J., Munguira M.L., Moreno J.C., Sainz H., Sanz M.J., Simón J.C. 2002. Parsimony analysis of endemism and its application to animal and plantgeographical distributions in the Ibero-Balearic region (western Mediterranean). *Journal of Biogeography* 29(1): 109-124.
- Geer C. de 1776. *Mémoires pour servir à l'histoire des insectes. P. Hesselberg, Stockholm*. Vol. 6, viii + 523 pp., 30 pls.
- Geoffroy E.L. 1762. Histoire abrégée des insectes... de Paris. Durand, Paris. Vol. 2, 690 pp., pls 11-22.
- Gil-Collado J. 1930. Monografía de los Sífidos de España. *Trabajos del Museo Nacional de Ciencias Naturales (Serie Zoológica)*, 54, 376 pp.
- Goeldlin de Tiefenau P. 1976. Revision du genre *Paragus* (Dipt., Syrphidae) de la région paléarctique occidentale. *Bulletin de la Société entomologique suisse* 49: 79-108.
- Grković A., Smit J., Radenković S., Vujić A., Van Steenis J. 2019. Two new European long-legged hoverfly species of the *Eumerus binominatus* species subgroup (Diptera, Syrphidae). *ZooKeys* 858: 91-108.
- Harris M. 1776-1780. An exposition of English insects... Robson Co., London, 1776. Decad I, pp. 1-40, 2 pls + pls 1-10 [1776.??.?]; Decad II, pp. 41-72, pls 11-20 [1778.??.?]; Decads III, IV, pp. 73-99, 100-138, pls 21-30, 31-40 [after 1779.12.24]; Decad V, pp. 139-166, pls 41-50 + 1 pl. [1780.??.?].
- Kehlmaier C. 2004. Faunistic and taxonomic notes of Anisopodidae, Acroceridae, Conopidae and Stratiomyidae (Diptera) collected on the Iberian Peninsula. *Faunistische Abhandlungen* 25: 125-137.
- Kehlmaier C. 2005. Taxonomic revision of European Eudorylini (Insecta, Diptera, Pipunculidae). *Verhandlungen des Naturwissenschaftlichen Vereins in Hamburg* 41: 45-353.
- Kehlmaier C., Gibbs D.J., Withers P. 2019. New records of big-headed flies (Diptera: Pipunculidae) from the Mediterranean Basin. *Bonn zoological Bulletin* 68(1): 31-60.
- Klecka J., Hadrava J., Biella P., Akter A. 2018. Flower visitation by hoverflies (Diptera: Syrphidae) in a temperate plant-pollinator network. *PeerJ* 6: e6025.
- Latreille P.A. 1804. Tableau méthodique des insectes [pp. 129-200]. In: Latreille P.A. (ed.). Société de Naturalistes et d'Agriculteurs, Nouveau dictionnaire d'histoire naturelle... Tome 24. [Section 3]: *Tableaux méthodiques d'histoire naturelle*. Deterville, Paris, 84 + 4 + 85 + 238 + 18 + 34 pp.
- Lepeletier A.L.M., Serville J.G.A. 1828. Various articles on insects. In: Latreille P.A., Lepeletier A.L.M, Serville J.G.A., Guérin-Méneville F.E (eds), *Encyclopédie Méthodique, Insectes, Paris*, pp. 345-833.
- Linnaeus C. 1758. *Systema naturae*. Ed. 10, Vol. 1. 824 pp. L. Salvii, Holmiae [= Stockholm].
- Lobo J.M., Martín-Piera F. 2002. Searching for a predictive model for species richness of Iberian dungbeetle based on spatial and environmental variables. *Conservation Biology* 16(1): 158-173.
- Lobo J.M., Castro I., Moreno J.C. 2001. Spatial and environmental determinants of vascular plant species richness distribution in the Iberian Peninsula and Balearic Islands. *Biological Journal of the Linnean Society* 73: 233-253.
- Loew H. 1841. Ueber die Gattung *Chrysotoxum*. *Stettiner Entomologische Zeitung* 2: 136-141, 155-160.
- Loew H. 1854. Neue Beiträge zur Kenntniss der Dipteren. *Programm der Königlichen Realschule zu Meseritz 1854*: 1-24.
- Loew H. 1862. Ueber einige bei Varna gefangene Dipteren. *Wiener Entomologische Monatschrift* 6: 161-175.
- Macquart P.J.M. 1829. *Insectes diptères du nord de la France. Syrphies*. Lille. «1827» 223 pp., 4 pls.
- Macquart P.J.M. 1834. *Histoire naturelle des insectes. Diptères. Tome premier: Roret, Paris*, 578 + 8 pp., 12 pls.
- Marcos-García M.A., Louis, M. 2001. Revisión de las especies de sírfidos de la Colección J. Andréu (Diptera, Syrphidae). *Anales de Biología* [1998] 23: 49-62.
- Marcos-García M.A., Ricarte A. 2009. Los sírfidos (Diptera: Syrphidae) saproxílicos como indicadores del estado de conservación del Parque Nacional de Cabañeros [pp. 201-213]. In: Ramírez L., Asensio B. (eds), *Proyectos de investigación en parques nacionales: 2005-2008. Ministerio del Medio Ambiente, Madrid*, 262 pp.
- Marcos-García M.A., Vujić A., Mengual X. 2007. Revision of Iberian species of the genus *Merodon* Meigen, 1803 (Diptera: Syrphidae). *European Journal of Entomology* 104(3): 531-572.
- Marcos-García M.A., García-López A., Zumbado M.A., Rotheray G.E. 2012. Sampling methods for assessing syrphid biodiversity (Diptera: Syrphidae) in tropical forests. *Environmental Entomology* 41(6): 1544-1552.
- Marshall S.A. 2012. Flies: the natural history and diversity of Diptera. *Firefly Books Ltd, USA and Canada*, 616 pp.
- Matsumura S., Adachi J. 1917. Synopsis of the economic Syrphidae of Japan. (Pt III). *The Entomological Magazine, Kyoto* 3: 14-46.
- Meigen J.W. 1803. Versuch einer neuen Gattungs-Eintheilung der europäischen zweiflügeligen Insekten. *Magistrate Insektenkd.* 2: 259-281.
- Meigen J.W. 1822. *Systematische Beschreibung der bekannten europäischen zweiflügeligen Insekten. Dritter Theil. Schulz-Wundermann, Hamm*. x + 416 pp., pls 22-32.
- Nedeljković Z., Ačanski J., Vujić A., Obrecht D., Djan M., Stähls G., Radenković S. 2013. Taxonomy of *Chrysotoxum*

- festivum* Linnaeus, 1758 (Diptera: Syrphidae) – an integrative approach. *Zoological Journal of the Linnean Society* 169: 84-102.
- Nedeljković Z., Ačanski J., Djan M., Obreht-Vidaković D., Ricarte A., Vujić A. 2015. An integrated approach to delimiting species borders in the genus *Chrysotoxum* Meigen, 1803 (Diptera: Syrphidae), with description of two new species. *Contributions to Zoology* 84: 285-304.
- Nedeljković Z., Ricarte A., Šašić-Zorić Lj., Djan M., Hayat R., Vujić A., Marcos-García M.A. 2020. Integrative taxonomy confirms two new West-Palaearctic species allied with *Chrysotoxum vernale* Loew, 1841 (Diptera: Syrphidae). *Organisms Diversity and Evolution* (in press).
- Nieves-Aldrey J.L., Rey Del Castillo C. 1991. Ensayo preliminar sobre la captura de insectos por medio de una trampa Malaise en la sierra de Guadarrama (España) con especial referencia a los himenópteros (Insecta, Hymenoptera). *Ecologia* 5: 383-403.
- Nieves-Aldrey J.L., Fontal-Cazalla F., Garrido-Torres A.M., Rey del Castillo C. 2003. Inventario de Hymenoptera (Hexapoda) en el Ventorrillo: un rico enclave de biodiversidad en la sierra de Guadarrama (España central). *Graellsia* 59(2-3): 24-43.
- Osten Sacken C.R. 1875. On the North American species of the genus *Syrphus* (in the narrowest sense). *Proceedings of the Boston Society of Natural History* (1875-1876) 18: 135-153.
- Osten Sacken C.R. 1877. Western Diptera: Descriptions of new genera and species of Diptera from the region west of the Mississippi and especially from California. *Bulletin of the U.S. Geological Survey* 3: 189-354.
- Panzer G.W.F. 1806. *Faunae insectorum germanicae initiae oder Deutschlands Insecten, H. 104, Nurnberg*, 24 pp., 24 pls.
- Peris S.V. 1962. Los Sericomyiinae de España con descripción de una nueva especie de *Sericomyia* (Diptera, Syrphidae). *Boletín de la Real Sociedad Española de Historia Natural* 60(1): 55-60.
- Poda von Neuhaus N. 1761. *Insecta musei Graecensis, quae in ordines, genera et species juxta Systema Naturae Caroli Linnaei digessit. Widmanstadii, Graecii [=Graz]* 127 + [xii] pp., 2 pls.
- Popović D., Ačanski J., Djan M., Obreht D., Vujić A., Radenković S. 2015. Sibling species delimitation and nomenclature of the *Merodon avidus* complex (Diptera: Syrphidae). *European Journal of Entomology* 112(4): 790-809.
- Reemer M. 2012. Phylogeny and classification of the Microdontinae (Diptera: Syrphidae) (PhD. thesis). *University of Leiden, Leiden, The Netherlands*, 384 pp.
- Reyero J.M. 2002. La Naturaleza de España. *Ministerio de Medio Ambiente, Madrid (España)*, 381 pp.
- Ricarte A. 2008. Biodiversidad de sírfidos (Diptera: Syrphidae) y conservación de los hábitats en el Parque Nacional de Cabañeros, España (doctoral thesis). *Universidad de Alicante, Alicante, Spain*, 244 pp (+CD with full list of material examined).
- Ricarte A., Marcos-García M.A. 2017. A checklist of the Syrphidae (Diptera) of Spain, Andorra and Gibraltar. *Zootaxa* 4216(5): 401-440.
- Ricarte A., Jover T., Marcos-García M. A., Micó E., Brustel H. 2009. Saproxylic beetles (Coleoptera) and hoverflies (Diptera: Syrphidae) from a Mediterranean forest: towards a better understanding of their biology for species conservation. *Journal of Natural History* 43(9): 583-607.
- Ricarte A., Nencioni A., Tubić N.K., Grković A., Vujić A., Marcos-García M.A. 2018. The hoverflies of an oak Dehesa from Spain, with a new species and other insights into the taxonomy of the *Eumerus tricolor* group (Diptera: Syrphidae). *Annales Zoologici* 68: 259-280.
- Rivas-Martínez S. 1982. Memoria del mapa de las series de vegetación de la provincia de Madrid (1:200.000). *Diputación de Madrid, Servicio Forestal y Medio Ambiente. Madrid*, 48 pp.
- Rojo S., Gilbert F., Marcos-García M.A., Nieto J.M., Mier M.P. 2003. A world review of predatory hoverflies (Diptera, Syrphidae: Syrphinae) and their prey. *CIBIO Ediciones, Alicante*, 319 pp.
- Rondani C. 1844. *Species Italicae Generis Callicerae ex insectis Dipteris, distinctae et descriptae; Fragmentum octavum ad inserviendum Dipterologiae Italicae. Annales de la Société entomologique de France* (2) 2: 61-68.
- Rondani C. 1845. *Species Italicae generis Chrysotoxi insectis Dipteris, observatae et distinctae. Fragmentum decimum ad inserviendum dipterologiae Italicae. Annales de la Société entomologique de France* (2) 3: 193-203.
- Rondani C. 1857. *Dipterologiae italicae prodromus. Vol: II. Species italicae ordinis dipterorum in genera characteribus definita, ordinatim collectae, methodo analitica distinctae, et novis vel minus cognitiss descriptis. Pars prima. Oestridae: Syrphidae: Conopidae. A. Stocchi, Parmae [= Parma]*, 264 pp.
- Rondani C. 1868. *Diptera Italica non vel minus cognita descripta vel annotata observationibus nonnullis additis. Fasc. III. Atti della Società italiana di scienze naturali e del Museo civico di storia naturale di Milano* 11: 21-54.
- Rotheray G.E. 1994. Colour guide to hoverfly larvae (Diptera, Syrphidae) in Britain and Europe. *Dipterists Digest* 9: 1-156.
- Rotheray G.E., Gilbert F. 2011. The natural history of hoverflies. *Forrest Text, Cardigan, UK*, 333 pp.
- Sadeghi Namaghi H., Hussein M. 2009. The effects of collection methods on species diversity of family Syrphidae (Diptera) in Neyshabur, Iran. *Journal of Agricultural Science and Technology* 11(5): 521-526.
- Schiner I.R. 1860. Vorläufiger Commentar zum dipterologischen Theile der ‚Fauna Austriaca‘, mit einer naheren Begründung der in derselben aufgenommenen neuen Dipteren-Gattungen. II. *Wiener Entomologische Monatschrift* 4: 208-216.
- Schönrogge K., Gardner M.G., Elmes G.W., Napper E.K.V., Simcox D.J., Wardlaw J.C., Breen J., Barr B., Knapp J.J., Pickett J.A., Thomas, J.A. 2006. Host propagation permits extreme local adaptation in a social parasite of ants. *Ecology letters* 9: 1032-1040.
- Schummel T.E. 1842. Verzeichniss und Beschreibung der bis jetzt in Schlesien gefangenen Zweiflugler der Syrphen Familie. *Uebersicht der Arbeiten und Veränderungen der Schlesischen Gesellschaft für Vaterlandische Kultur*: 15-22.
- Séguy E. 1961. *Diptères syrphides d'Europe Occidentale. Mémoires du Muséum national d'Histoire naturelle Série (A)* 23, 248 pp.
- Šimić S., Vujić A. 1996. A new species of the genus *Eumerus* Meigen, 1822 (Diptera: Syrphidae). *Acta Entomologica serbica* 1: 1-14.
- Sommaggio D., Burgio G. 2003. Role of Diptera Syrphidae as

- landscape indicators: analysis of some case studies in Northern Italy. *Landscape management for Functional Biodiversity* 26(4): 145-150.
- Speight M.C.D. 1989. Saproxylic invertebrates and their conservation. *Council of Europe*, 1st edition, 81 pp.
- Speight M.C.D. 2020. Species accounts of European Syrphidae, 2020. *Syrph the Net, the database of European Syrphidae (Diptera)*. *Syrph the Net publications, Dublin* 104: 1-314.
- Speight M.C.D., Castella E. 2005. Diagnostic de pelouses et landes subalpines, à l'aide des diptères Syrphidae. *Rapport au conservatoire des réserves naturelles de Haute-Savoie*, 57 pp.
- Speight M.C.D., Sarthou J.-P. 2017. StN keys for the identification of the European species of various genera of Syrphidae 2017/Clés StN pour la détermination des espèces européennes de plusieurs genres de Syrphidae 2017. *Syrph the Net, the database of European Syrphidae (Diptera)*, *Syrph the Net publications, Dublin* Vol. 99, 139 pp.
- Speight M.C.D., Castella E., Sarthou J.-P. 2016. StN 2016. In: *Syrph the Net on CD, Issue 11*, Speight M.C.D., Castella E., Sarthou J.-P., Vanappelghem C. (eds). *Syrph the Net Publications, Dublin*.
- Torp Pedersen E. 1971. Some Syrphidae from Spain, with descriptions of two new species (Insecta, Diptera). *Stenstrupia* 1(21): 229-245.
- Townes A. 1972. A light-weight Malaise trap. *Entomological News* 83: 239-247.
- Van Steenis J., Lucas J.A.W. 2011. Revision of the West-Palaeartic species of *Pipizella* Rondani, 1856 (Diptera, Syrphidae). *Dipterists Digest* 18: 127-180.
- Van Steenis J., Hauser M., Van Zuijlen M.P. 2017. Review of the *Eumerus barbarus* species group (Diptera: Syrphidae) from the western Mediterranean basin. *Bonn zoological Bulletin* 66: 145-165.
- Van Steenis J., Van Zuijlen M.P., Ricarte A., Marcos-García M.A., Doczkal D., Ssymank A., Mengual X. 2020. First records of *Chrysotoxum volaticum* Séguéy, 1961 from Europe and *Platycheirus marokkanus* Kassebeer, 1998 from Spain (Diptera: Syrphidae) together with additional records of Spanish *Chrysotoxum* Meigen, 1803. *Bonn zoological Bulletin* 69(1): 141-155.
- Van Veen M. 2004. Hoverflies of Northwest Europe: identification keys to the Syrphidae. *KNNV Publishing, Utrecht, Netherlands*, 256 pp.
- Verrall G. H. 1873. Additions and correction to the list of British Syrphidae. *Entomologist's Monthly Magazine* 9: 251-256.
- Verrall G.H. 1901. Platypozidae, Pipunculidae and Syrphidae of Great Britain. *British flies*. Gurney & Jackson, London Vol. 8, [i] + 691 pp.
- Violovitsh N. A. 1974. A review of the Palaearctic species of the genus *Chrysotoxum* Mg. (Diptera, Syrphidae). *Entomologoskoc obozrenie (Entomological Review)* 53: 196-217.
- Vujić A., Šimić S. 1999. Genus *Eumerus* Meigen 1822 (Diptera: Syrphidae) in area of former Yugoslavia. *Glasnik Prirodnjackog Muzeja u Beogradu*, B 49-50: 173-190.
- Williston S.W. 1887. Synopsis of the North American Syrphidae. *Bulletin of the American Museum of Natural History* (1886) 31, xxx + 335 pp, 12 pls.
- Wolton R. 2011. Observations on ecology and behaviour of *Microdon myrmicae* Schönrogge et al. (Diptera, Syrphidae), with a description of egg and early instar morphology. *Dipterists Digest* 18: 55-67.
- Zetterstedt J.W. 1838. *Dipterologis Scandinaviae*. Sect. 3: Diptera, pp. 477-868. *Insecta Lapponica, Lipsiae [= Leipzig]*, vi + 1, 140 pp.
- Zetterstedt J.W. 1842-1860. *Diptera Scandinaviae, Officina Lundbergiana, Lundae [=Lund.]*, Vol. 1, [before 1842.09.06]; vol. 2, pp. 441-894 [1843.05.02]; vol. 3, pp. 895-1012 [1844.03.20], 1013-1280 [1845.04.09]; vol. 4, pp. 1281-1738 [1845.06.11]; vol. 5, pp. 1739-2162 [1846.09.03]; vol. 6, pp. 2163-2580 [1847.06.09]; vol. 7, pp. 2581-2934 [1848.09.13]; vol. 8, pp. 2935-3366 [1849.09.12]; vol. 9, pp. 3367-3710 [1850.??.??]; vol. 10, pp. 3711-4090 [1851.??.??]; vol. 11, pp. 4091-4545 [1852.03.10]; vol. 12, pp. xx + 4547-4942 [1855.07.??]; vol. 13, pp. xvi+ 4943-6190 [1859.09.01 preface]; vol. 14, pp. iv + 6191-6609 [1860.12.12], pp. iii-xvi+440.

Appendix

Checklist of the Syrphidae from Sierra de Guadarrama, plus all other species (*) recorded in Madrid province.

All mentioned localities belong to Sierra de Guadarrama, Madrid, except for El Espinar, La Granja/San Ildefonso, San Rafael, and Val-saín, that belong to Sierra de Guadarrama, Segovia (Fig. 1). Hoverfly species from El Ventorrillo (in bold) are new to Sierra de Guadarrama when all locality cells are blank (—). 'Sierra de Guadarrama (gen.)' is used when the published locality in a bibliographic record is just 'Sierra de Guadarrama'. Reference legend: GC1930, Gil-Collado (1930); P1962, Peris (1962); MG&L2001, Marcos-García & Louis (2001); MG&L2007, Marcos-García et al. (2007); VS&L2011, Van Steenis & Lucas (2011). GC1930 always refers to the genus *Cheilosia* with the spelling 'Chilosia'.

For a checklist of the Syrphidae from Madrid province exclusively, the following Segovian species should be excluded from this table: *Callicera spinolae*, *Cheilosia flavipes*, *Epsitrophe nitidicollis*, *Eristalis pertinax*, *Merodon equestris*, *Volucella pellucens*, and *Xanthogramma citrofasciatum*.

	GC1930	P1962 / MG&L2001 / MG&L2007 / VS&L2011
ERISTALINAE		
<i>Brachypalpoides lentus</i> *		
<i>Brachypalpus laphriformis</i>	—	— / — / — / —
<i>Callicera macquarti</i>	—	— / — / — / —
<i>Callicera rufa</i>	—	— / — / — / —

	GC1930	P1962 / MG&L2001 / MGetal2007 / VS&L2011
<i>Callicera spinolae</i>	La Granja	— / — / — / —
<i>Ceriana vespiformis</i>	Los Molinos, El Escorial (as <i>Ceroides vespiformis</i>)	— / — / — / —
<i>Ceriana conopsoides</i>	El Escorial (as <i>Ceroides conopsoides</i>)	— / — / — / —
<i>Cheilosia aerea</i>	El Escorial (as <i>Chilosia zetterstedti</i> and <i>Chilosia correcta</i>)	— / — / — / —
<i>Cheilosia barbata</i> *		
<i>Cheilosia flavipes</i>	San Rafael	— / — / — / —
<i>Cheilosia gigantea</i>	San Rafael	— / — / — / —
<i>Cheilosia impressa</i> *		
<i>Cheilosia laticornis</i>	El Escorial, Sierra de Guadarrama (gen.) (as <i>Chilosia latifacies</i>)	— / Sierra de Guadarrama (gen.) / — / —
<i>Cheilosia latifrons</i> *		
<i>Cheilosia mutabilis</i>	El Escorial (as <i>Chilosia ruralis</i>)	— / — / — / —
<i>Cheilosia proxima</i>	—	— / — / — / —
<i>Cheilosia soror</i> *		
<i>Cheilosia variabilis</i>	El Escorial	— / — / — / —
<i>Cheilosia vernalis</i>	Cercedilla, Sierra de Guadarrama (gen.)	— / — / — / —
<i>Chrysogaster basalis</i>	Cercedilla, El Escorial	— / — / — / —
<i>Chrysogaster coemeteriorum</i>	Cercedilla (as <i>C. chalybeata</i> var. <i>coerulea</i>), El Escorial, Sierra de Guadarrama (as <i>C. chalybeata</i>)	— / — / — / —
<i>Chrysogaster virescens</i> *		
<i>Criorrhina asilica</i>	El Escorial	— / — / — / —
<i>Criorrhina ranunculi</i> *		
<i>Eristalinus aeneus</i>	El Escorial, Guadarrama (as <i>Eristalis aeneus</i>)	— / — / — / —
<i>Eristalinus sepulchralis</i>	Guadarrama (as <i>Eristalis taeniops</i>)	— / — / — / —
<i>Eristalinus taeniops</i>	Sierra de Guadarrama (gen.) (as <i>Eristalis sepulchralis</i>)	— / — / — / —
<i>Eristalis arbustorum</i>	Sierra de Guadarrama (gen.)	— / El Escorial, Sierra de Guadarrama (gen.) / — / —
<i>Eristalis horticola</i>	Cercedilla, El Escorial, San Rafael	— / — / — / —
<i>Eristalis nemorum</i>	Sierra de Guadarrama (gen.) (as var. <i>sylvarum</i>)	— / — / — / —
<i>Eristalis pertinax</i>	La Granja	— / — / — / —
<i>Eristalis similis</i>	Cercedilla, El Escorial, Navacerrada, San Rafael, Sierra de Guadarrama (gen.) (as <i>E. pratorum</i>)	— / — / — / —
<i>Eristalis tenax</i>	Sierra de Guadarrama (gen.)	— / El Escorial, Sierra de Guadarrama (gen.) / — / —
<i>Eumerus amoenus</i> *		
<i>Eumerus barbarus</i>	El Escorial	— / — / — / —
<i>Eumerus caballeroi</i>	El Escorial	— / — / — / —
<i>Eumerus consimilis</i>	—	— / — / — / —
<i>Eumerus grallator</i> *		
<i>Eumerus nudus</i>	El Escorial	— / — / — / —
<i>Eumerus pauper</i>	El Espinar, El Sierra de Guadarrama (gen.)	— / — / — / —
<i>Eumerus pulchellus</i>	El Escorial	— / — / — / —
<i>Eumerus ruficornis</i> *		
<i>Eumerus sabulorum</i>	El Escorial, San Rafael, Sierra de Guadarrama (gen.)	— / — / — / —
<i>Eumerus strigatus</i>	El Escorial, El Espinar	— / — / — / —
<i>Eumerus sulcitibius</i>	—	— / — / — / —

	GC1930	P1962 / MG&L2001 / MGetal2007 / VS&L2011
<i>Eumerus tarsalis</i>	El Escorial	— / — / — / —
<i>Ferdinandea cuprea</i>	El Escorial, El Paular, La Granja	— / — / — / —
<i>Helophilus trivittatus</i>	El Escorial, Guadarrama	— / — / — / —
<i>Lejogaster metallina</i>	San Rafael, Sierra de Guadarrama (gen.) (as <i>Chrysogaster metallina</i>)	— / — / — / —
<i>Mallota dusmeti</i>	El Escorial	— / — / — / —
<i>Mallota fuciformis</i> *		
<i>Melanogaster aerea</i>	Cercedilla, El Escorial (as <i>Chrysogaster macquarti</i>)	— / — / — / —
<i>Merodon aeneus</i>	Cercedilla, La Granja, San Rafael (as var. <i>crassitarsatus</i>)	— / Sierra de Guadarrama (gen.) / — / —
<i>Merodon avidus</i>	Cercedilla, El Escorial, El Paular (as <i>M. spinipes</i> var. <i>serrulatus</i> , var. <i>obscuritarsis</i> and var. <i>avidus</i>)	— / El Escorial, Sierra de Guadarrama (gen.) / — / —
<i>Merodon chalybeus</i>	El Escorial (as <i>M. spinipes</i> var. <i>obscuritarsis</i>)	
<i>Merodon clavipes</i>	El Escorial, Guadarrama, El Paular (also as <i>M. clavipes</i> var. <i>senilis</i>)	— / Sierra de Guadarrama (gen.) / — / —
<i>Merodon escorialensis</i>	El Escorial, Sierra de Guadarrama (gen.) (as <i>M. geniculatus</i> var. <i>escorialensis</i>)	— / — / El Escorial / —
<i>Merodon equestris</i>	San Ildefonso (as <i>M. equestris</i> var. <i>narcissi</i>)	— / — / — / —
<i>Merodon flavus</i> *		
<i>Merodon funestus</i>	El Escorial	— / — / — / —
<i>Merodon geniculatus</i>	El Escorial, Sierra de Guadarrama (gen.)	— / — / — / —
<i>Merodon ibericus</i>	Cercedilla, El Escorial (as <i>M. spinipes</i> var. <i>bicolor</i>)	— / — / — / —
<i>Merodon italicus</i>	El Escorial (as <i>M. affinis</i>)	— / — / — / —
<i>Merodon nigritarsis</i> *		
<i>Merodon obscuritarsis</i> *		
<i>Merodon parietum</i>	—	— / Sierra de Guadarrama (gen.) / — / —
<i>Merodon unguicornis</i>	Sierra de Guadarrama (gen.) (also as <i>M. bolivari</i>)	— / Sierra de Guadarrama (gen.) (as <i>M. bolivari</i>) / Cercedilla / —
<i>Merodon unicolor</i>	Cercedilla, El Escorial, El Paular, Sierra de Guadarrama (gen.) (as <i>M. aeneus</i> var. <i>unicolor</i>)	— / — / — / —
<i>Milesia crabroniformis</i>	El Escorial, La Granja	— / — / — / —
<i>Milesia semiluctifera</i>	Cercedilla, El Escorial	— / — / — / —
<i>Myathropa florea</i>	El Escorial, El Paular, Guadarrama, La Granja/San Ildefonso (also as <i>Myiathropa florea</i> var. <i>nigrotarsata</i>)	— / — / — / —
<i>Myolepta difformis</i> *		
<i>Myolepta dubia</i>	Sierra de Guadarrama (gen.) (as <i>Myolepta luteola</i>)	— / — / — / —
<i>Neoscia meticulosa</i> *		
<i>Neoscia podagrica</i>	—	— / — / — / —
<i>Neoscia tenur</i> *		
<i>Orthonevra frontalis</i>	Sierra de Guadarrama (gen.) (as <i>Chrysogaster frontalis</i>)	— / — / — / —
<i>Orthonevra nobilis</i> *		
<i>Parhelophilus versicolor</i> *		
<i>Peleocera caledonica</i>	—	— / — / — / —
<i>Peleocera lusitanica</i>	El Escorial (as <i>Chamaesyphus lusitanicus</i>)	— / — / — / —

	GC1930	P1962 / MG&L2001 / MGetal2007 / VS&L2011
<i>Platynochaetus setosus</i> *		
<i>Rhingia rostrata</i> *		
<i>Riponnensia longicornis</i>	El Escorial (as <i>Chrysogaster longicornis</i>)	— / — / — / —
<i>Riponnensia splendens</i>	El Escorial, Sierra de Guadarrama (gen.) (as <i>Chrysogaster splendens</i>)	— / — / — / —
<i>Sericomyia hispanica</i>	Cercedilla, La Granja (as <i>S. lappona</i>)	Cercedilla, La Granja / — / — / —
<i>Sericomyia lappona</i>	El Escorial	— / — / — / —
<i>Spilomyia digitata</i>	El Escorial, Guadarrama	— / Sierra de Guadarrama (gen.) / — / —
<i>Spilomyia saltuum</i>	El Escorial, Los Molinos	
<i>Syritta pipiens</i>	—	— / — / — / —
<i>Volucella bombylans</i>	El Escorial, Guadarrama, San Rafael (also as <i>V. bombylans</i> var. <i>plumata</i>)	— / — / — / —
<i>Volucella elegans</i>	Cercedilla, Collado Mediano, El Escorial, Guadarrama, La Granja, San Rafael	— / — / — / —
<i>Volucella inanis</i>	El Escorial, Guadarrama	— / — / — / —
<i>Volucella pellucens</i>	La Granja	— / — / — / —
<i>Volucella zonaria</i>	Sierra de Guadarrama (gen.)	— / — / — / —
<i>Xylota segnis</i>	El Escorial, La Granja	— / — / — / —
<i>Xylota sylvarum</i>	Cercedilla, El Paular, La Granja, Valsain	— / — / — / —
PIPIZINAE		
<i>Claussenia hispanica</i>	El Escorial (as <i>Pipizella heringii</i> var. <i>hispanica</i>)	— / — / — / —
<i>Pipiza festiva</i> *		
<i>Pipizella annulata</i>	El Escorial (as <i>P. virens</i> var. <i>annulata</i>)	— / — / — / —
<i>Pipizella lyneborgi</i>	—	— / — / — / El Escorial
<i>Pipizella maculipennis</i>	Sierra de Guadarrama (gen.)	— / — / — / —
<i>Pipizella viduata</i> *		
<i>Pipizella virens</i>	Cercedilla, El Escorial, Guadarrama, Sierra de Guadarrama (gen.)	— / — / — / —
SYRPHINAE		
<i>Chrysotoxum bicinctum</i>	Cercedilla	— / — / — / —
<i>Chrysotoxum cisalpinum</i>	—	— / — / — / —
<i>Chrysotoxum festivum</i>	Cercedilla, Lozoya, Sierra de Guadarrama (gen.)	— / El Escorial, Sierra de Guadarrama (gen.) (as <i>C. arcuatum</i>) / — / —
<i>Chrysotoxum gracile</i>	Lozoya (as <i>C. festivum</i> var. <i>gracile</i>)	— / — / — / —
<i>Chrysotoxum intermedium</i>	Cercedilla, El Escorial, La Granja	— / — / — / —
<i>Chrysotoxum latifasciatum</i>	Cercedilla, El Escorial, El Paular, La Granja, Sierra de Guadarrama (gen.), Valsain	— / Sierra de Guadarrama (gen.) / — / —
<i>Chrysotoxum octomaculatum</i>	—	— / El Escorial (as <i>C. latifasciatum</i>) / — / —
<i>Chrysotoxum</i> sp. near <i>vernale</i>	—	— / — / — / —
<i>Chrysotoxum vernale</i>	El Escorial	— / — / — / —
<i>Chrysotoxum volaticum</i>	El Escorial, San Ildefonso	— / — / — / —
<i>Dasysyrphus albostrigatus</i>	—	— / — / — / —
<i>Dasysyrphus paucillus</i>	—	— / — / — / —
<i>Dasysyrphus tricinctus</i>	—	— / — / — / —
<i>Didea intermedia</i>	—	— / — / — / —
<i>Doros profuges</i>	Cercedilla (as <i>Doros conopeus</i>)	— / — / — / —
<i>Epistrophe eligans</i> *		
<i>Epistrophe nitidicollis</i>	La Granja	— / — / — / —

	GC1930	P1962 / MG&L2001 / MGetal2007 / VS&L2011
<i>Episyrphus balteatus</i>	Sierra de Guadarrama (gen.)	— / — / — / —
<i>Eupeodes corollae</i>	El Escorial, San Rafael (as <i>Syrphus luniger</i>)	— / — / — / —
<i>Eupeodes latifasciatus</i>	—	— / — / — / —
<i>Eupeodes lucasi</i> *		
<i>Eupeodes luniger</i>	Cercedilla, El Escorial (as <i>Syrphus corollae</i> var. <i>fulvifrons</i> and var. <i>nigrofemoratus</i>)	— / — / — / —
<i>Melangyna triangulifera</i>	El Escorial (as <i>Syrphus triangulifer</i>)	— / — / — / —
<i>Melanostoma mellinum</i>	Cercedilla, El Escorial, El Paular	— / — / — / —
<i>Melanostoma scalare</i>	Cercedilla, El Escorial	— / — / — / —
<i>Meliscaeva auricollis</i>	Cercedilla	— / — / — / —
<i>Paragus albifrons</i>	Cercedilla	— / — / — / —
<i>Paragus bicolor</i>	Cercedilla, Collado Mediano, El Escorial, El Espinar, San Rafael, Sierra de Guadarrama (gen.) (also as <i>P. bicolor</i> var. <i>testaceus</i> and <i>taeniatus</i>)	— / — / — / —
<i>Paragus finitimus</i> *		
<i>Paragus haemorrhous</i>	El Escorial, Sierra de Guadarrama (gen.) (as <i>P. tibialis</i> var. <i>haemorrhous</i>)	— / — / — / —
<i>Paragus pecchiolii</i>	—	— / — / — / —
<i>Paragus quadrifasciatus</i>	Sierra de Guadarrama (gen.)	— / — / — / —
<i>Paragus strigatus</i>	Cercedilla, El Espinar	— / — / — / —
<i>Paragus tibialis</i>	Sierra de Guadarrama (gen.) (as <i>P. tibialis</i> var. <i>obscurus</i> and var. <i>trianguliferus</i>)	— / — / — / —
<i>Paragus vandergooti</i> *		
<i>Parasyrphus punctulatus</i>	—	— / — / — / —
<i>Platycheirus albimanus</i>	Cercedilla, El Escorial	— / — / — / —
<i>Platycheirus scutatus</i>	—	— / — / — / —
<i>Scaeva albomaculata</i>	Cercedilla, El Escorial, El Paular (as <i>Lasyophticus albomaculatus</i>)	— / — / — / —
<i>Scaeva mecogramma</i>	Cercedilla (as <i>Syrphus posticatus</i>)	— / — / — / —
<i>Scaeva pyrastris</i>	El Escorial, El Paular, La Granja, Sierra de Guadarrama (gen.), Valle del Paular (as <i>Lasyophticus pyrastris</i>)	— / — / — / —
<i>Scaeva selenitica</i>	Cercedilla, El Escorial, El Paular, San Ildefonso (as <i>Lasyophticus seleniticus</i>)	— / — / — / —
<i>Sphaerophoria interrupta</i> *		
<i>Sphaerophoria rueppellii</i> *		
<i>Sphaerophoria scripta</i>	Sierra de Guadarrama (gen.)	— / — / — / —
<i>Syrphus ribesii</i>	Cercedilla, El Escorial, La Granja	— / — / — / —
<i>Syrphus torvus</i>	—	— / — / — / —
<i>Syrphus vitripennis</i>	San Rafael (as <i>S. ribesii</i> var. <i>vitripennis</i>)	— / Sierra de Guadarrama (gen.) / — / —
<i>Xanthandrus comtus</i>	—	— / — / — / —
<i>Xanthogramma citrofasciatum</i>	San Rafael	— / — / — / —
<i>Xanthogramma marginale</i> *		
<i>Xanthogramma dives</i>	—	— / — / — / —
<i>Xanthogramma pedissequum</i>	El Escorial (as <i>X. ornatum</i>)	— / — / — / —