

Are Microsatellite Fragment Lengths Useful for Population-Level Studies? The Case of *Polygala lewtonii* (Polygalaceae)

Authors: Germain-Aubrey, Charlotte C., Nelson, Cory, Soltis, Douglas E., Soltis, Pamela S., and Gitzendanner, Matthew A.

Source: Applications in Plant Sciences, 4(2)

Published By: Botanical Society of America

URL: <https://doi.org/10.3732/apps.1500115>

BioOne Complete (complete.BioOne.org) is a full-text database of 200 subscribed and open-access titles in the biological, ecological, and environmental sciences published by nonprofit societies, associations, museums, institutions, and presses.

Your use of this PDF, the BioOne Complete website, and all posted and associated content indicates your acceptance of BioOne's Terms of Use, available at www.bioone.org/terms-of-use.

Usage of BioOne Complete content is strictly limited to personal, educational, and non - commercial use. Commercial inquiries or rights and permissions requests should be directed to the individual publisher as copyright holder.

BioOne sees sustainable scholarly publishing as an inherently collaborative enterprise connecting authors, nonprofit publishers, academic institutions, research libraries, and research funders in the common goal of maximizing access to critical research.

ARE MICROSATELLITE FRAGMENT LENGTHS USEFUL FOR POPULATION-LEVEL STUDIES? THE CASE OF *POLYGALA LEWTONII* (POLYGALACEAE)¹

CHARLOTTE C. GERMAIN-AUBREY^{2,3,6}, CORY NELSON⁴, DOUGLAS E. SOLTIS^{2,3,5},
PAMELA S. SOLTIS^{3,5}, AND MATTHEW A. GITZENDANNER^{2,3,5}

²Department of Biology, University of Florida, Gainesville, Florida 32611 USA; ³Florida Museum of Natural History, University of Florida, Gainesville, Florida 32611 USA; ⁴College of Medicine, University of Florida, Gainesville, Florida 32603 USA; and ⁵UF Genetics Institute, University of Florida, Gainesville, Florida 32608 USA

- **Premise of the study:** Microsatellites, despite being commonly used population-level markers, contain biases because scoring relies solely on fragment length. Their complexity can lead to homoplasy, the effects of which are poorly understood. We investigated the impact of using fragment lengths, repeats, or flanking region sequences on common population-level analyses.
- **Methods:** Five polymorphic microsatellite markers amplified across the central Florida scrub endemic *Polygala lewtonii* (Polygalaceae) and its close, widespread congener *P. polygama*. We genotyped 147 individuals of *P. lewtonii* and 156 of *P. polygama*, and sequenced the amplicons of four markers across all individuals. We ran basic statistics, spatial clustering analysis, historical demographics, and migration tests.
- **Results:** One population of intermediate morphology was genetically clearly identified as *P. polygama*, making it the southernmost population of this species. Statistics were comparable between the fragment length and repeat numbers, with some notable differences. Flanking regions exhibited surprisingly high polymorphism between species, and between geographically distant conspecific populations.
- **Discussion:** The increasing use of markers developed in one species and amplified in another is only a good practice if precautions are taken, notably the sequencing of the fragments between species and populations. Flanking region sequences are a useful marker at the interspecific level.

Key words: flanking regions; microsatellites; *Polygala lewtonii*; Polygalaceae; population-level sequence markers.

Genetic diversity is one of the three forms of biodiversity recognized by the International Union for the Conservation of Nature (IUCN) and is linked to the fitness of a species, as well as its capacity to adapt to future environmental changes (Reed and Frankham, 2003). Especially in the case of species from endangered habitats, genetic diversity and its geographical partitioning can be important for sound conservation planning (Ellstrand and Elam, 1993; Petit et al., 1998; Crandall et al., 2000; Frankham, 2003, 2005; Reed and Frankham, 2003).

The genetic study of plants at the inter- or intraspecific level has often been hampered by a lack of molecular markers. Recombining nuclear DNA encompasses a much larger pool of genetic variation than the plastid genome, with information for

reconstructing coalescence and recent evolutionary history. Nuclear microsatellites (simple sequence repeats [SSRs]) have therefore become popular due to their abundance, high polymorphism, codominance, and Mendelian inheritance (Morgante and Olivieri, 1993). Despite the recent surge in single-nucleotide polymorphism (SNP)-based studies, microsatellites are still favored, not only because of their lower cost of development, but also because they are useful for the study of species with shallow evolutionary history and restricted ranges (Putman and Carbone, 2014). Still, microsatellites can present some problems (Selkoe and Toonen, 2006). Several studies have examined the different biases in the practice of microsatellite genotyping, namely the sole reliance on fragment length, despite the complex composition of the repeats (Culver et al., 2001; Ramakrishnan and Mountain, 2004; Anmarkrud et al., 2008), and the influence of flanking region polymorphism on results (Blankenship et al., 2002; Selkoe and Toonen, 2006; Vali et al., 2008). In general, the extent of homoplasy among alleles at different scales (within the same population, among different populations of the same species, and between closely related species) is still not well understood, and the effects of homoplasy have seldom been evaluated (Adams et al., 2004; Shirai et al., 2009).

Homoplasy occurs when identical fragment lengths result from different evolutionary histories. Numerous studies have examined the impact of homoplasy on evaluations of genetic

¹Manuscript received 13 October 2015; revision accepted 5 January 2016.

The authors thank the Howard Hughes Medical Institute's Group Advantaged Training of Research (HHMI-G.A.T.O.R.) mentoring program (to C.N.) and the Florida Statewide Endangered and Threatened Plant Conservation Program. We also thank B. Connolly, J. Nelson, J. Clayton, A. Morris, R. Peet, W. Knapp, I. Kadis, S. Leonard, O. Gockman, H. Alexander, A. Malatesta, D. White, L. Majure, R. Carter, J. Griffin, B. Pace, E. Menges, P. Corogin, R. Abbott, W. Poag, K. Clanton, E. Ergansteiner, and W. Carronero for their help with collection, and the Division of Plant Industry for collection permits.

⁶Author for correspondence: cgermain@ufl.edu

doi:10.3732/apps.1500115

diversity and found that mutations in the repeat or the flanking region can “lead to false inference in phylogenetic, taxonomical and diversity studies if small numbers of microsatellites are used” (Stágel et al., 2009). Depending on the number and nature of the loci and organism, homoplasy has resulted in underestimations of population subdivision and genetic divergence between populations (Goldstein et al., 1995; Hedrick, 1999; Makova et al., 2000; Selkoe and Toonen, 2006), inflated levels of gene flow between populations (Rousset, 1996; Epperson, 2005; Selkoe and Toonen, 2006), overestimation of hybridization between species (Shirai et al., 2009), or no significant effect (Estoup et al., 2002). One study detected noticeably more variation in the flanking region sequences than in the microsatellite repeats between closely related species (Queloz et al., 2010).

One way to detect and address homoplasy is to sequence the flanking regions of the microsatellite loci and subsequently infer the number of repeats. The flanking region is the stretch of approximately 100–150 bp of nonrepeated nucleotides on each side of the SSR tandem repeat between the priming sites and the repeat (Fig. 1). Nucleotide substitution in these regions is believed to evolve more slowly than repeat-number evolution of the microsatellite itself, but the flanking regions can still exhibit some degree of polymorphism, and in some cases significantly so (Vali et al., 2008). Identifying different haplotypes in the nonrepeat flanking sequences enables researchers to identify homoplasious microsatellite alleles (Blankenship et al., 2002; Vali et al., 2008). At the intraspecific level, very few studies have used microsatellite flanking regions, but some have been able to resolve homoplasy (Grimaldi and Crouau-Roy, 1997; Waters and Wallis, 2000; Mogg et al., 2002; Won et al., 2005; Ablett et al., 2006; Queloz et al., 2010), and one has found the insertions/deletions (indels) in the flanking regions to be a source of homoplasy (Matsuoka et al., 2002). Several studies have investigated this problem in nonmodel animal species (Adams et al., 2004; Reyes et al., 2012), but only one so far in plants (Stágel et al., 2009), which addresses varieties of the commercial species of *Capsicum L.*

In this study, the U.S. federally listed endangered species and Florida endemic *Polygala lewtonii* Small and its more widespread sister species, *P. polygama* Walter, were chosen as a test case for the study of microsatellite flanking regions as potential markers at the population level and to assess the impact of indels on homoplasy and the estimation of genetic diversity. The inclusion of the more widespread sister species, *P. polygama*, will allow for an objective interpretation of the results in the context of the evolutionary history of this group (Gitzendanner and Soltis, 2000). We analyzed and compared the flanking region sequence, the fragment length (as would be used in

most population-level studies using microsatellites), and strict numbers of tandem repeat numbers (inferred from those two data sets).

METHODS

Sample collection—Leaves of 148 and 118 individuals from 10 and eight populations were collected between 2006 and 2009 for *P. lewtonii* and *P. polygama*, respectively, encompassing the range of each species, although sampling of *P. polygama* was more focused on the southern United States and is sparse throughout the remainder of its range (Table 1 and map in Fig. 2). We collected from four to 16 and eight to 16 individuals per population for *P. lewtonii* and *P. polygama*, respectively (Table 1). Permits were obtained from the Florida Division of Plant Industry (permit numbers 714 and 954). Leaves were dried and stored in silica gel, and DNA was extracted following a modified cetyltrimethylammonium bromide (CTAB) extraction protocol (Doyle and Doyle, 1987; Cullings, 1992).

Species identification for the Saddle Blanket population—Population 108, in The Nature Conservancy’s (TNC) Saddle Blanket site, was labeled as *P. lewtonii* at the time of collection, although there were doubts about its identity. The morphology of the plant combines traits of *P. lewtonii* and *P. polygama*, and looks like a dwarfed *P. polygama*, an unexpected species so far south. Normally, the ranges of *P. lewtonii* and *P. polygama* do not overlap and *P. polygama* is significantly larger than the Florida endemic. Further investigation involving measurement of seed sizes resulted in a size range overlapping both *P. lewtonii* and *P. polygama*. Ploidy was checked by comparing genome sizes of individuals from population 108 with those of other *P. lewtonii* and *P. polygama* populations using flow cytometry (Doležel et al., 2007; Hare and Johnston, 2011).

Microsatellite development and genotyping—A microsatellite library was constructed using the voucher for population 107 and biotinylated (CA)₈ and (GA)₈ probes following a protocol optimized in the Soltis laboratory (Edwards et al., 2007, 2008; Lopez-Vinyallonga et al., 2010; Germain-Aubrey et al., 2011). Because we were interested in the variation in flanking regions, we designed a primer to encompass a long flanking region (ca. 300 bp) on the 5′ end of the repeat, while the primer on the 3′ end was close to the repeat, so as to minimize the amount of variation on that end to a negligible amount, and allowing sequencing to be unidirectional. The primers amplified a comparable region in the sister species, *P. polygama*.

Loci were amplified in all samples of both *P. lewtonii* and *P. polygama* in a 10-μL solution containing 1× buffer, 1 M betaine, 1.5 mM MgCl₂, 0.1 μM dNTPs, 0.5 μM forward and reverse primers, 0.5 μM of either 6-FAM-, VIC-, NED-, or PET-labeled M13 primer (Life Technologies, Carlsbad, California, USA), and 0.2 unit *Taq* polymerase. PCR amplification conditions were 3 min at 95°C, followed by 35 cycles of 45 s at 95°C, 1 min 15 s at 52°C, and 1 min 15 s at 72°C, with a final step of 20 min at 72°C. PCR products were pooled in a NED/PET: VIC/FAM 2:1 ratio and then genotyped on an ABI 3730 DNA analyzer (Applied Biosystems, Carlsbad, California, USA) at the Interdisciplinary Center for Biotechnology Research at the University of Florida. Microsatellites were scored automatically and then checked by eye using GeneMarker version 1.6 (Soft Genetics, State College, Pennsylvania, USA). PCR products were sequenced on an ABI 3130 DNA sequencer (Applied Biosystems) from the long flanking region (5′-end) toward the repeat. Sequences were visualized and edited using Geneious Pro version 5.3.4 (Biomatters, <http://www.geneious.com/>). For all genotyping and sequencing, four positive controls per 96-well plate were used to ensure consistency in the scoring. In the case of clear and unambiguous sequences, flanking regions were considered homozygous, and any fragment length difference was attributed to a difference in repeat number (Fig. 1). Sequences with more than two or three ambiguous sites in the flanking region were cloned and the clones sequenced. We were then able to score precise nucleotide substitutions and attribute any fragment length difference to either an insertion/deletion event in the flanking region or a difference in repeat number between the two alleles. Also, when sequence polymorphism could not be resolved for each allele through clean sequences from the clones, only fragment length could be retrieved. This can lead to differences between the number of individuals in the fragment length and flanking regions data sets. Sequences at loci Poly1, PolyD12, PolyE01, PolyB08, and Poly5 were edited manually and aligned in Geneious Pro version 5.3.4.

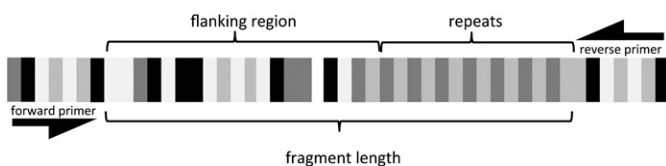


Fig. 1. Schematic representation of the repeats, flanking regions, and fragment length—the basis of the three data sets in this study. The four shades of gray correspond to the four different nucleotides. The number of repeats is calculated as the difference between the fragment length (from genotyping) and the flanking region (from sequencing).

TABLE 1. Populations, locations, number of plants genotyped for fragment length, number of plants sequenced, and population vouchers for *Polygala lewtonii* and *P. polygama*.

| Species | Population no. | Location | Latitude (°N) | Longitude (°W) | Genotyped ^a | Sequenced ^b | Voucher (Herbarium) ^c |
|---------------------|----------------|------------------------------------|---------------|----------------|------------------------|------------------------|----------------------------------|
| <i>P. lewtonii</i> | 102 | LWRSF, Polk Co., FL | 27.704 | -81.475 | 16 | 13 | CGA 11 (FLAS) |
| <i>P. lewtonii</i> | 105 | Clermont, Lake Co., FL | 28.546 | -81.701 | 16 | 16 | JRA 22703 (FLAS) |
| <i>P. lewtonii</i> | 107 | TNC Tiger Creek, Polk Co., FL | 26.644 | -81.443 | 16 | 15 | JRA 22685 (FLAS) |
| <i>Polygala</i> sp. | 108 | TNC Saddle Blanket, Polk Co., FL | 28.018 | -81.383 | 16 | 8 | JRA 22690 (FLAS) |
| <i>P. lewtonii</i> | 115 | ADBCCSP, Polk Co., FL | 26.677 | -81.493 | 16 | 12 | CGA 50 (FLAS) |
| <i>P. lewtonii</i> | 118 | ADBCCSP, Polk Co., FL | 26.670 | -81.494 | 4 | 0 | — |
| <i>P. lewtonii</i> | 124 | ONF, Salt Spring, Marion Co., FL | 29.331 | -81.782 | 16 | 19 | — |
| <i>P. lewtonii</i> | 125 | ONF, Hughes Island, Marion Co., FL | 29.256 | -81.760 | 16 | 12 | — |
| <i>P. lewtonii</i> | 126 | ONF, Hughes Island, Marion Co., FL | 19.250 | -81.757 | 16 | 15 | — |
| <i>P. lewtonii</i> | 127 | ONF, Hughes Island, Marion Co., FL | 29.254 | -81.707 | 16 | 0 | — |
| <i>P. polygama</i> | 102 | Citrus Co., FL | 27.704 | -81.475 | 13 | 11 | JRA 24633 (FLAS) |
| <i>P. polygama</i> | 1301 | Mansfield, CT | 41.750 | -72.183 | 8 | 0 | <i>B. Connelly s.n.</i> |
| <i>P. polygama</i> | 1801 | Anoka Co., MN | 45.252 | -93.232 | 16 | 13 | <i>O. Gockman s.n.</i> |
| <i>P. polygama</i> | 1802 | St. Louis Co., MN | 47.359 | -92.109 | 16 | 0 | <i>O. Gockman s.n.</i> |
| <i>P. polygama</i> | 601 | Richland Co., WI | 43.359 | -90.431 | 15 | 19 | <i>T. Cochran s.n.</i> |
| <i>P. polygama</i> | 602 | Sauk Co., WI | 43.393 | -89.955 | 16 | 18 | <i>T. Cochran s.n.</i> |
| <i>P. polygama</i> | 805 | Lauderdale Co., MS | 32.232 | -88.862 | 10 | 10 | <i>L. Majure s.n.</i> |
| <i>P. polygama</i> | 301 | Ashtabula Co., OH | 41.889 | -80.786 | 8 | 0 | <i>J. Bissell s.n.</i> |

Note: FLAS = Florida Museum of Natural History, Gainesville, Florida, USA; LWRSF = Lake Wales Ridge State Forest; TNC = The Nature Conservancy; ADBCCSP = Allen David Broussard Catfish Creek State Park; ONF = Ocala National Forest.

^aNo. of samples genotyped for fragment length.

^bNo. of samples sequenced.

^cWhere voucher information is missing, authorities did not grant permission for vouchering.

Characterization of markers—MICRO-CHECKER version 2.2.3 (van Oosterhout et al., 2004) was used to test potential genotyping errors, selection biases of loci, and the presence of null alleles. GenAlEx 6.41 (Peakall and Smouse, 2006) was used for statistics to characterize the loci and for conversions of data formats for other software packages. GENEPOP (Excoffier et al., 2005) was used for tests of Hardy–Weinberg equilibrium and linkage disequilibrium. SPAGeDi version 1.3a (Hardy and Vekemans, 2002) was used to perform a randomization test with 10,000 permutations of R_{ST} (a genetic distance

measure that assumes the stepwise mutation process in microsatellites; Slatkin, 1995) on alleles, for each locus separately and averaged over all loci to find the best-fitting evolutionary model for the data set. Because *Polygala* L. is a perennial with a few to dozens of annual stems, GenoDive version 2.0b17 (Meirmans and Van Tienderen, 2004) was used to detect any clones in the data set.

All subsequent analyses were repeated using three data sets: the fragment length, the repeat number, and the flanking region sequence—hereafter referred to as fragments, repeats, and flanking regions, respectively (Fig. 1). The data set

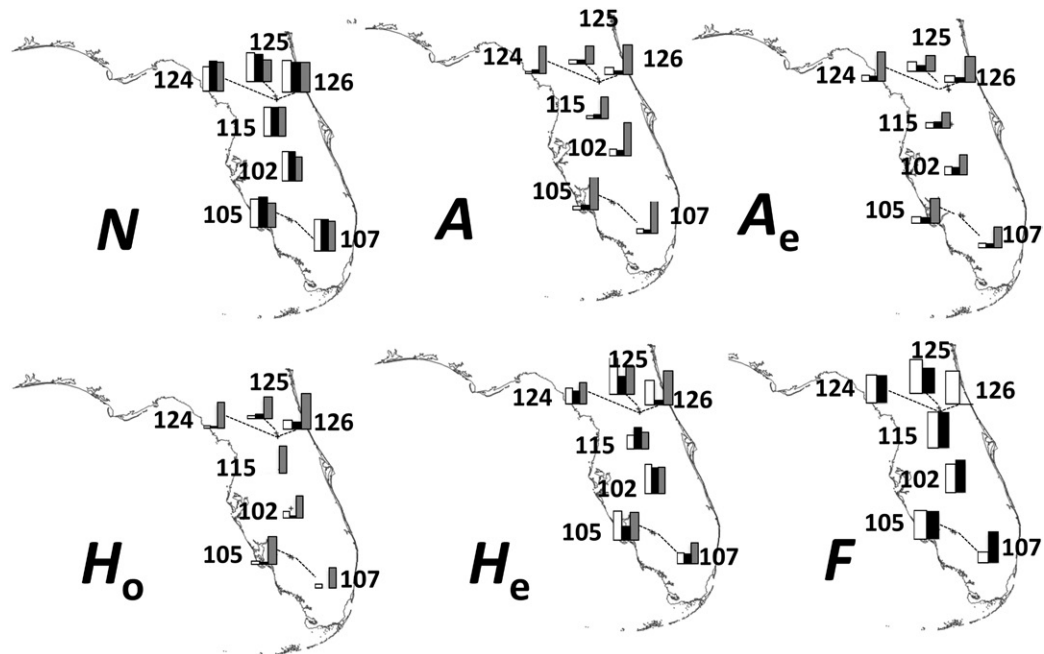


Fig. 2. Geographical distribution of the genetic diversity of *Polygala lewtonii*. Different maps represent measures of diversity for the fragments (white bar), repeat number (black bar), and flanking regions (gray bar). N = number of individuals; A = number of alleles/number of polymorphic sites for sequence data; A_e = effective number of alleles/number of haplotypes; F = fixation index; H_e = expected heterozygosity; H_o = observed heterozygosity. Graphs are based on Appendix S6.

consists of the three loci common to all data sets, which were all genotyped and sequenced: Poly1, PolyE01, and PolyB08. The goal of this comparison of the three data sets is to evaluate their impact on several population-level genetic analyses.

Genetic diversity—GenAIEx 6.501 (Peakall and Smouse, 2006) was used to infer statistics at the population level: observed and expected heterozygosity (H_o and H_e), mean number of individuals (N), mean number of alleles per locus (both absolute [A] and effective [A_e]), and fixation index (F). Also, an exact Hardy–Weinberg equilibrium test was implemented with a 1,000,000-generation Markov chain (including a 100,000 burn-in) in GENEPOP. All statistics were averaged over all loci for each population for an analysis of *P. lewtonii* alone, and averaged over all populations within each species for a comparison of the endemic and its widespread sister species. For the flanking regions, Arlequin version 3.1 (Excoffier et al., 2005) was used to infer the number of haplotypes, heterozygosity, and nucleotide diversity within each population.

Spatial genetic structure—TESS version 2.3.1 (Durand et al., 2009) was used to infer the number of clusters (K) based on allelic identity and frequency. TESS uses a Bayesian method to minimize departure of populations from Hardy–Weinberg equilibrium and includes a decay of correlation of membership coefficients with geographical distance within clusters. As advised in the manual, the analysis of the true number of clusters has to be assessed on the basis of the Deviance Information Criterion (DIC) and bar plots. In all, 100,000 generations encompassing 10,000 burn-in, with admixture, were replicated 10 times per $K = 2–6$ for the two *Polygala* species combined, and per $K = 2–8$ for *P. lewtonii* alone. All runs were permuted within each K , “averaged” in CLUMPP (Jakobsson and Rosenberg, 2007), and then visualized in DISTRUCT (Rosenberg, 2004).

AMOVA analyses with 9999 permutations were implemented in GenAIEx, partitioning variation within individuals, among individuals within populations, among populations within species, and between species to infer gene flow between populations and ridges. For conservation applications, the genetic contribution of each population of *P. lewtonii* relative to other populations was calculated using CONTRIB (Petit et al., 1998). This allelic contribution was then broken down into its contribution to total allelic diversity and divergence from other populations.

Historical demography and migration—The mutation rates for each of the loci were used in an isolation-with-migration model in IMa2 (Hey and Nielsen, 2007; Hey, 2010). For the microsatellites, several mutation rates were considered from previous studies, with the conservative range of 0.0001–0.001 mutation per allele per generation being retained (Thuillet et al., 2002; Vigouroux et al., 2002; O’Connell and Ritland, 2004). Mutation rates of the flanking regions were estimated as 0.002 for PolyB08, 0.00035 for PolyE01, 0.00037 for Poly5, and 0.0010 for Poly1 (Appendix S1). We employed the HKY model for the DNA sequences and for the microsatellites used a stepwise mutation model, as advised in the program manual. We ran 20 chains under a geometric heating scheme. Runs consisted of 3 million steps with the first 300,000 steps of burn-in. Histograms were compared, effective sample size (ESS) values (correcting sample size for autocorrelation) checked to evaluate the runs, and correlations between parameters checked. Generation time was set to three years (Weekley and Menges, 2012).

RESULTS

Characterization of markers—Ten novel microsatellites were amplified across populations and species; of these, eight showed polymorphism for the microsatellite data set. Due to budget restrictions, five were selected for sequencing (Appendix S2). Of the latter five, PolyD12 and PolyE01 were found to be linked based on the linkage disequilibrium test implemented in GENEPOP (Raymond and Rousset, 1995; Rousset, 2008), so the two were concatenated for the flanking regions data set, but only PolyE01 was kept for the fragments and repeats data sets, leaving four unlinked loci. Locus Poly5 was difficult to amplify for fragment scoring and was therefore deleted from subsequent comparative analyses due to excessive missing data. However, the sequences of the flanking region of Poly5 are reported in

Appendix S3 and the Discussion, as one large indel is particularly relevant to our question of homoplasy. Three loci were therefore used for the comparative analysis. No scoring error or null alleles were detected for any of the loci, and the R_{ST} permutation tests on the *P. lewtonii* data set revealed a stepwise mutation model for all loci (both with fragments and repeats) after a sequential Bonferroni correction (Rice, 1989). We therefore performed R_{ST} for the AMOVA, as well as F_{ST} as it is widely used in microsatellite studies.

Flanking regions—All loci exhibited polymorphism. PolyB08 (100 individuals of *P. lewtonii* and 65 *P. polygama*) is 211 bp long with three nucleotide substitutions; PolyD12 (66 *P. lewtonii* and 49 *P. polygama*) is 280 bp long with five substitutions, two points indels, and one 4-bp indel; PolyE01 (48 *P. lewtonii* and 51 *P. polygama*) is 367 bp long with five substitutions and three indels; Poly1 (108 *P. lewtonii* and 61 *P. polygama*) is 222 bp long with seven substitutions and two deletions; and Poly5 (135 *P. lewtonii* and 87 *P. polygama*) is 169 bp long with three nucleotide substitutions, one deletion, and a 30-bp insertion inside of which are one substitution and one deletion. Of those 32 polymorphisms, 12 delimited species, and only six showed within-population variation (Appendix S3).

Homoplasy—Combining the information from the flanking regions and fragment lengths, we can identify homoplasy due to variation in flanking regions, or even due to repeat differences in all loci. As an example, position 207 at locus PolyB08 shows all individuals in *P. polygama* population 102 having an A (allele A) while all other individuals in the species have a G (allele G). The scoring for this population is uniformly 414/414. While only five *P. polygama* individuals from populations other than population 102 have the same fragment length (and sequences for allele G), 74 individuals from several populations of *P. lewtonii* have fragment lengths scored at 414. In the absence of indels in the flanking region, it means they also have the same number of repeats. However, the 414-bp allele is homoplasious, and the 74 individuals of *P. lewtonii* all have the allele G. This homoplasy and the differentiation of population 102 would not be picked up by fragment length alone. Subsequently, the estimated rates of gene flow between those populations will be artificially increased. Table 2 represents the mutations in flanking regions PolyB08, PolyE01, and Poly1 and the homoplasy created subsequently within populations, within species, and across species. The vast majority of homoplasy is created across species, although it occurs even among populations within species and between individuals in the same population.

Rarer, but still possible, differences in the flanking region can hide similarities in the number of repeats in the microsatellite. For example, for locus PolyE01, individuals 7, 9, 10, 11, 34, 35, and 56 in population 102 of *P. lewtonii* are all scored with a fragment length of 476 and individual 55 with 474. However, at base position 330, a CA insert differentiates these former individuals from individual 55. The difference in fragment length is therefore only due to the flanking region; the number of repeats is the same for all individuals. This will lead to an apparent increase in genetic diversity that is not due to differences in the number of repeats. To take this further, at the same insertion in population 107, all individuals have the same 476 fragment-length score. However, individual 15 has two CA insertions, and therefore has one less repeat in its microsatellite, but this difference is compensated by the extra 2-bp insertion in the flanking region. This will decrease the apparent genetic diversity detected in this population for this locus (Fig. 3).

TABLE 2. List of mutations and their impact on homoplasy at different levels.

| Locus | Population | Individuals ^a | Nature of mutation | Fragment length score also present in other individuals | No. of individuals with same score | Homoplasy created in same | | |
|---------|-------------------------|--------------------------|----------------------------|---|------------------------------------|---------------------------|---------|----------------|
| | | | | | | Population | Species | Across species |
| PolyB08 | L 108 + all P | All | Substitution | 414, 418 | 74 out of 100 scored L | No | No | Yes |
| Poly1 | P 102 | All | Substitution | 414 | 5 P + 74 L | No | Yes | Yes |
| | P 805, 1301, 102, L 108 | All | Substitutions (3 separate) | 214, 226, 230, 224 | 21 P + 100 L | No | Yes | Yes |
| | P + L 108 | All | Substitutions (3 separate) | 215, 226, 232 | 101 L | No | No | Yes |
| | P 805, 1301, L 108 | All | Substitution | 214, 226, 230, 224 | 28 P + 100 L | No | Yes | Yes |
| | L 120 | 1 | Indel | 216 | 1 L | No | Yes | No |
| | L 105 | 1 | Indel | 214 | 99 L + 18 P | Yes | Yes | Yes |
| PolyE01 | L 124 | 1 | Indel | 214 | 99 L + 18 P | Yes | Yes | Yes |
| | P 1801, 601, 602 | All | Substitutions (2 separate) | 472, 474, 478, 416 | 20 L + 70 P | No | Yes | Yes |
| | L 108 | 1 | Indel | 474 | 10 L + 65 P | Yes | Yes | Yes |
| | L 102, 115 | 3 | Indel + substitution | 470, 476, 478 | 102 L + 2 P | Yes | Yes | Yes |
| | P 805 | All | Substitutions (2 separate) | 474 | 10 L + 58 P | No | Yes | Yes |
| | P + L 108 | All | Substitutions (2 separate) | 474, 416, 482, 468, 464, 470, 472, 478, 488 | 17 L | No | No | Yes |
| | L 105 | 1 | Substitution | 476 | 101 L | Yes | Yes | No |
| | L (but 102) | All but 2 | Insert (×2 for 107) | 470, 476, 470, 474, 472, 478, 456, 480, 434 | In text and Fig. 3 | Yes | Yes | Yes |

Note: L = *Polygala lewtonii*; P = *Polygala polygama*.

^aNot all mutations apply to all individuals in the population at all loci and mutations.

Genetic diversity—Between sister species, *P. lewtonii* has a higher number of alleles per population than its widespread congener *P. polygama*, but a lower number of effective alleles (Table 3), which could imply the presence of rare or unique alleles. Those numbers are generally higher for repeats than they are for fragment

length. The expected heterozygosity differs significantly between fragments and repeats (lower for fragments), as does the observed heterozygosity (higher for fragments). Lastly, the fixation index also showed noticeable differences, with the repeats giving higher estimates of inbreeding than the fragments.

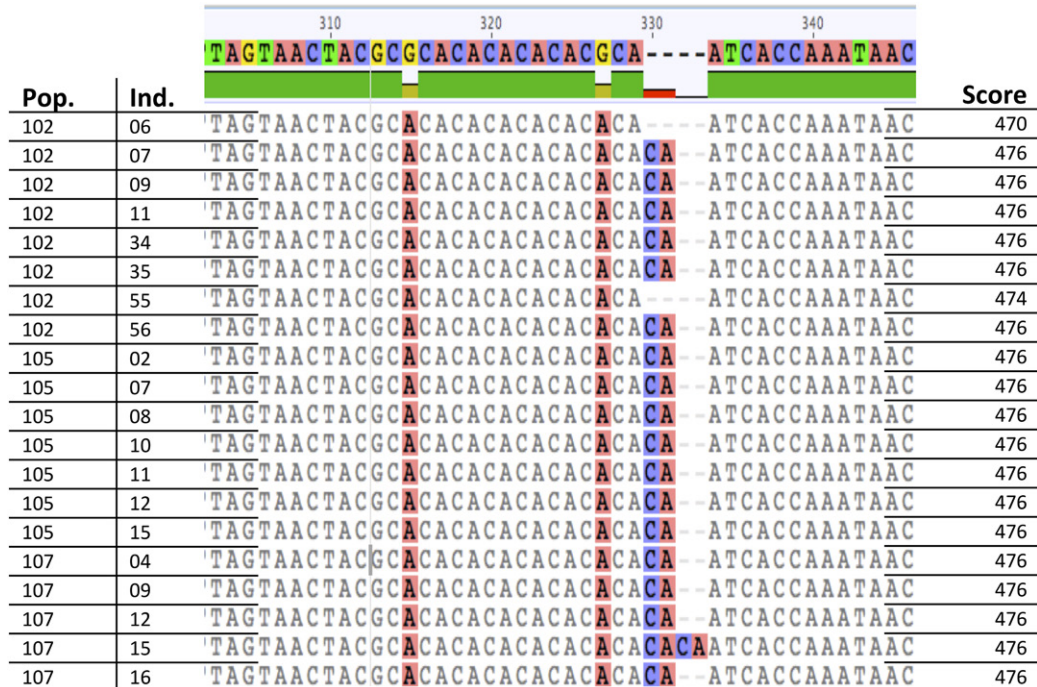


Fig. 3. Examples of creation and obstruction of fragment length differences with inserts in the flanking region at locus PolyE01 for *Polygala lewtonii*. The topmost sequence is the 50% consensus sequence over both species (more than are included in the frame presented here). Ind. = individual; Pop. = population.

TABLE 3. Overall genetic diversity in *Polygala lewtonii* and *P. polygama*.^a

| Statistics | <i>P. lewtonii</i> | <i>P. polygama</i> |
|----------------------|--------------------|--------------------|
| <i>N</i> | | |
| Fragment | 148 | 118 |
| Repeats | 139 | 87 |
| <i>A</i> | | |
| Fragment | 2.127 (0.120) | 1.966 (0.162) |
| Repeats | 6.333 (1.202) | 5.667 (2.404) |
| <i>A_e</i> | | |
| Fragment | 1.363 (0.048) | 1.339 (0.090) |
| Repeats | 1.702 (0.142) | 2.225 (0.683) |
| <i>H_e</i> | | |
| Fragment | 0.199 (0.020) | 0.213 (0.026) |
| Repeats | 0.405 (0.048) | 0.423 (0.215) |
| <i>H_o</i> | | |
| Fragment | 0.100 (0.016) | 0.090 (0.020) |
| Repeats | 0.060 (0.041) | 0.011 (0.011) |
| <i>F</i> | | |
| Fragment | 0.410 (0.046) | 0.564 (0.055) |
| Repeats | 0.845 (0.104) | 0.972 (0.023) |

Note: *A* = number of alleles; *A_e* = effective number of alleles; *F* = fixation index; *H_e* = expected heterozygosity; *H_o* = observed heterozygosity; *N* = number of individuals.

^aResults for all but *N* are means per population and are presented with SE in brackets.

Using AMOVA, most of the variation in repeat number is partitioned between species, whereas most of the variation in fragment lengths is maintained within populations. The flanking regions show nearly equal variance components between species, among populations, and among individuals within populations (Fig. 4).

Within *P. lewtonii*, the number of individuals per population for each data set is summarized in Table 1 (columns “Genotyped” and “Sequenced”). Low numbers can interfere with statistical analyses, so populations 108, 118, and 127 were removed from the data set for the comparative analyses. The variation per

population based on flanking regions was higher than the estimates from both fragments and repeats for *A_e* and *H_e*. Within *P. lewtonii*, the sample sizes, *A*, and *A_e* were comparable for the repeats, flanking regions, and fragments. *H_o*, however, was higher for the fragments than the repeats for all populations except 105. Finally, the fixation index was comparable for all populations except 107 and 126. The variation among populations in the number of polymorphic sites, number of haplotypes, and nucleotide diversity was not correlated with the variation in *A*, *A_e*, and *H_o*, respectively (Fig. 2).

The fragments data set shows only population 102 (Lake Wales Ridge State Forest) to have a positive contribution to the overall allelic richness. Repeats, however, reveal populations 102, 115 (ADB Catfish State Preserve SP), and 127 (Ocala National Forest) all positively contribute to the allelic richness of the species. Flanking regions show populations 115 and 127 as positive contributors (Appendix S4).

Spatial genetic structure

Population 108—TESS detected clear structure, clustering population 108 with *P. polygama* based on both fragments and repeat number (Figs. 3, 5, Appendix S5). Population 108 was therefore excluded from analyses of *P. lewtonii* only. Flow cytometry did not detect any difference in genome size between population 108 and any population of *P. lewtonii*. All mutations that are specific to *P. polygama* are also found in population 108 (Appendix S3). Population 108 in The Nature Conservancy’s Saddle Blanket site is hereafter identified as *P. polygama*, making it the southernmost population of this species.

Bayesian clustering—Both fragment length and repeats delimit both *Polygala* species clearly, with the fragments showing less distinction between the two, and a less clear-cut population 108 in *P. polygama*. Within *P. lewtonii*, the DIC curves detect an optimal number of clusters of *K* = 3 for both the fragments and repeats, but only the fragments show a clear structure in the

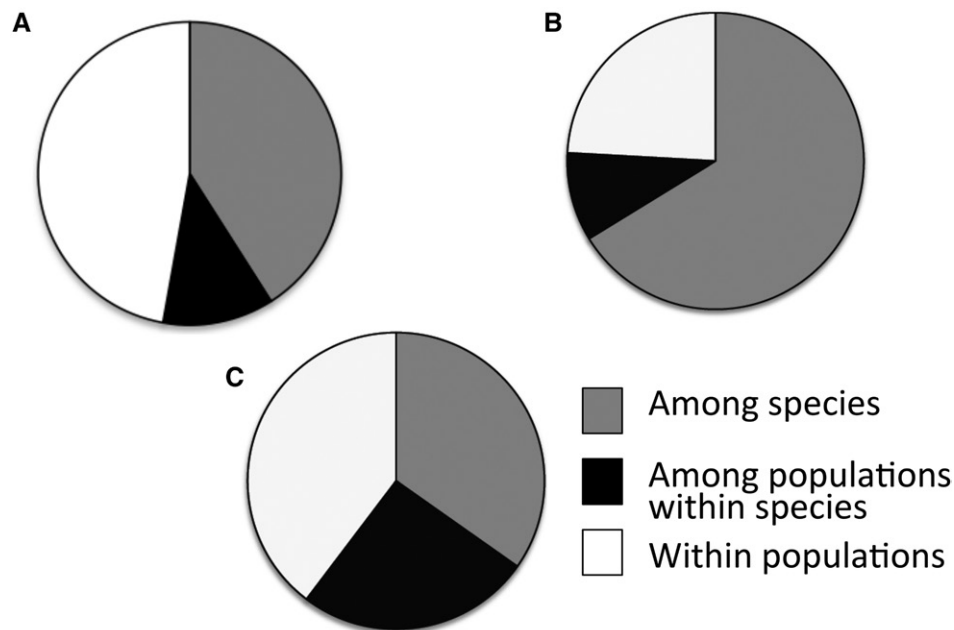


Fig. 4. Portion of molecular variance between species, among populations within species, and within populations for both *Polygala lewtonii* and *P. polygama* using fragment lengths (A), repeat number (B), and flanking region sequence (C) for the three overlapping loci.

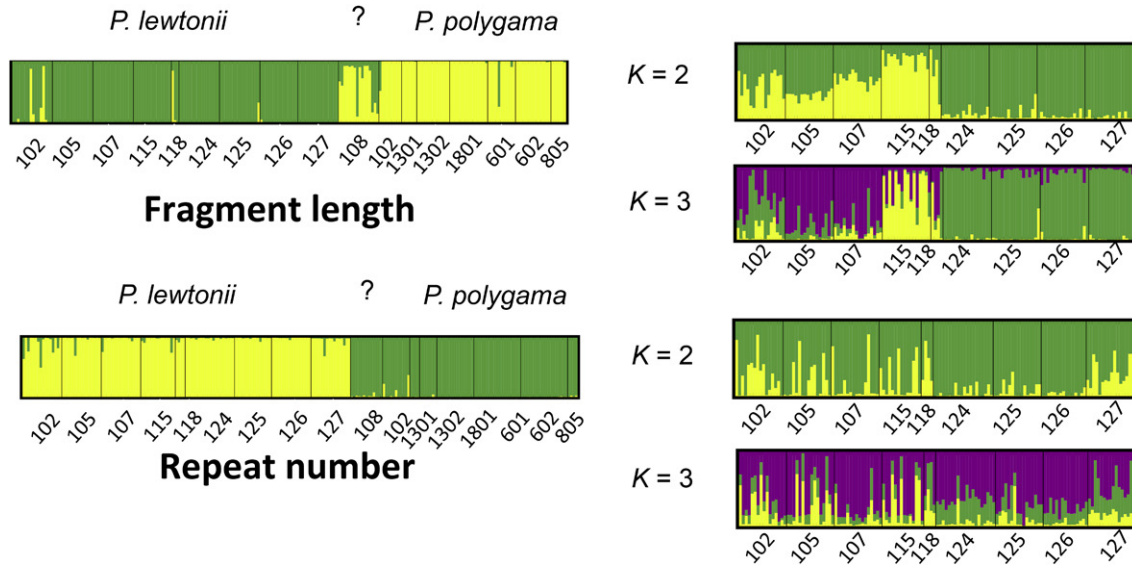


Fig. 5. Genetic and geographic clustering of data for both *Polygala* species (left) and *P. lewtonii* only (right), using TESS, with the number of clusters (K) shown in the center for fragment length (above) and repeat number (below).

bar plots: one cluster in the southern Lake Wales Ridge (populations 102, 105, 107), one on Mount Dora (populations 124–127), and the smallest one for populations in central/north Lake Wales Ridge (Fig. 5) (populations 115 and 118). $K = 3$ is therefore the optimal number of clusters for the fragments within *P. lewtonii*. The repeat numbers analyses show no structure at any K values (Fig. 5).

Gene flow— F_{ST} permutations among populations reveal low population differentiation in fragments, with less differentiation between geographically close populations, such as those in the Ocala National Forest (populations 124–127), while the repeats show a proportionally high differentiation in the Ocala National Forest cluster (Table 4). Also, populations 105 and 102, in central and northern Lake Wales Ridge, seem isolated from everything else. Finally, populations 115 and 107, which are geographically close, at the southern tip of the Lake Wales Ridge, show low levels of differentiation, perhaps due to ongoing gene flow. Generally, fragment lengths showed a high level of significance in F_{ST} while repeats were not significant. On the other hand, R_{ST} tended to be more consistent between fragments and repeat numbers, with population 105 being more isolated from other populations; some populations on Mount Dora were also genetically isolated despite being geographically very

close (Table 4). Because the data set has proven to follow a stepwise mutation model, the consistency in the R_{ST} might be due to a better fit overall.

Population contributions—The fragment data set shows three populations that distinguish themselves from the rest. Populations 124 and 126, in the Ocala National Forest, have high diversity, but no significant divergence from other populations, while population 102, at the southernmost tip of the Lake Wales Ridge, does not exhibit a positive contribution to overall diversity, but is highly differentiated from other populations, most likely in the form of private alleles. Overall, fragment lengths had a higher degree of differentiation between the highest and lowest contributions, followed by the flanking regions, and then the repeats data set.

Historical demography and migration—Runs in Ima2 (repeats only, whole fragments, and sequences only) all showed ESS values higher than 70 (up to 436), with no significant correlations between parameters, and most histograms exhibited a strong sharp peak, as expected in reliable analyses. This isolation-with-migration Bayesian model uses mutation rates and a priori relationships between groups of individuals to reconstruct present and past effective population sizes and gene flow between

TABLE 4. Among-population F_{ST}/R_{ST} values for *Polygala lewtonii*.^a

| Population | 102 | 105 | 107 | 115 | 124 | 125 | 126 |
|------------|---------------|---------------|---------------|--------------|--------------|--------------|--------------|
| 102 | | 0.122/0.189* | 0.126/0.000 | 0.142/0.010 | 0.262/0.097* | 0.038/0.000 | 0.135/0.067 |
| 105 | 0.130*/0.000 | | 0.029/0.177* | 0.091/0.184* | 0.201/0.107* | 0.056/0.235* | 0.133/0.095* |
| 107 | 0.090*/0.006 | 0.165*/0.096* | | 0.119/0.000 | 0.159/0.047 | 0.041/0.000 | 0.070/0.048 |
| 115 | 0.080*/0.104* | 0.098*/0.192* | 0.084*/0.000 | | 0.079/0.000 | 0.088/0.001 | 0.158/0.031 |
| 124 | 0.082*/0.002 | 0.081*/0.091* | 0.044/0.000 | 0.056/0.000 | | 0.203/0.111* | 0.193/0.013 |
| 125 | 0.104*/0.000 | 0.102*/0.000 | 0.117*/0.104* | 0.058/0.218* | 0.061/0.097* | | 0.034/0.098* |
| 126 | 0.121*/0.000 | 0.106*/0.005 | 0.079*/0.000 | 0.062/0.000 | 0.034/0.000 | 0.040/0.027 | |

Note: F_{ST} = genetic distance measure assuming an infinite allele model; R_{ST} = genetic distance measure assuming a stepwise mutation model.

^aInformation presented: values for repeats/values for fragments.

*Indicates significance of permutation test ($P < 0.05$).

those populations in time. Population sizes are relative to each other and should not be compared from one run to another.

For the repeats only, the size of the *P. polygama* population (including population 108 of *P. lewtonii*) was larger (value of 1.8 relative to other values within the repeats analysis) than that of the Lake Wales Ridge (0.752) and the Mount Dora (0.446) populations of *P. lewtonii* combined. The ancestral *P. lewtonii* population is thought to have been large (2.0), similar to the ancient *Polygala* complex (2.0). In terms of relative population migration ($2Nm$), there is no gene flow between *P. polygama* and either of the *P. lewtonii* populations. The Lake Wales Ridge populations, however, contributed largely to migrants toward *P. polygama* (relative value of 0.499), while the Mount Dora populations contributed less (0.049). The exchange of migrants from the Lake Wales Ridge to Mount Dora is larger than in the opposite direction (0.167 vs. 0.1). The ancestral *P. lewtonii* population contributed migrants toward *P. polygama* (0.268), while the opposite was not true (0.00).

For the data set of fragment lengths, *P. polygama* was also larger (4.7) than the Lake Wales Ridge (1.8) and Mount Dora (2.5) populations, even when combined. The ancestral *P. lewtonii*, however, was larger (83.6) than the ancestral *Polygala* complex (43.0). These last values are much larger than those from the repeats. For the relative gene flow between populations, the strongest exchange of genes was between Mount Dora and the Lake Wales Ridge (0.6 from Mount Dora toward the Lake Wales Ridge, and almost double in the other direction: 1.00). The Lake Wales Ridge also served as a source of gene flow toward *P. polygama* with 0.7, with only 0.2 in the opposite direction, contrary to the absence of such flow with the repeats.

Using flanking region sequences gives us a completely different view of the past history of population sizes and gene exchange. No gene exchange was detected between any of the populations at any point in time. Also, the *P. polygama* population (3.6) is larger than either of the *P. lewtonii* populations (Mount Dora and Lake Wales Ridge), as is the case with the other data sets, but the Mount Dora population is larger than the Lake Wales Ridge population (0.5 and 0.04, respectively). Finally, the ancestral populations are much smaller than the present ones, which is not the case with the other data sets (0.01 for the ancestral *P. lewtonii* population and 0.02 for the ancestral *P. polygama/P. lewtonii* population).

DISCUSSION

This study is the first to sequence the microsatellite flanking regions for a full set of populations for two closely related species, nearing 200 individuals sequenced for four loci. Moreover, the distinction between the fragment length and the repeat numbers provides an exceptional data set to measure the impact of mutations in the flanking region on estimates of genetic diversity. Although the number of independent loci sequenced is small, it is still superior to studies using only chloroplast regions to infer levels and partitioning of genetic diversity, as they are inherently linked and only rarely variable (Ouborg et al., 1999).

The increasingly diverse utilization of microsatellites (Selkoe and Toonen, 2006; Kalia et al., 2010) and rapidity with which microsatellites can now be developed make it easy to overlook issues at individual loci. Our findings reinforce the idea that careful consideration of each locus is essential, especially when

using loci developed and characterized in related taxa, or when comparing several related species in the same study (as is common in studies of crops and their wild relatives, or hybrids, among other examples).

Homoplasmy—Homoplasmy was detected with the use of flanking region sequencing and the discovery of substitutions and even-number one indel at the locus Poly5. The latter case is the most problematic because it will go undetected when only fragment length is being considered, as it mimics the addition or deletion of one or more repeats. Also, in rare cases, indels in the flanking region can create homoplasmy (a repeat shorter by two repeats of 2 bp, “compensated” by a 4-bp insertion in its flanking region). Estoup et al. (2002) estimated that homoplasmy problems in studies of populations with “shallow” history and/or smaller effective population size, as is the case for *P. lewtonii*, did not affect overall results. Indeed, recently diverged populations have had less time to accumulate mutations in their flanking regions. However, we show that even in recently diverged species and populations, complex mutations have accumulated in the flanking regions at all loci. Most mutations within *P. lewtonii* were substitutions, but some were indels, with the case of locus Poly1 exhibiting variation within populations. Also, Fig. 3 exhibits several consequences for the same indel in different populations, and within populations. We therefore believe that mutations in the flanking region should not be underestimated in small or young species and populations.

This trend was only accentuated when considering related taxa. Between *P. lewtonii* and *P. polygama*, the presence of insertions, substitutions, and a single-base-pair insertion specific to *P. polygama* means that risks of homoplasmy are significantly higher between closely related species than within either one alone. Commonly, journals require loci to be amplified in related species. The cross-amplification in related species can be useful for studies in the same clade, but loci should be used carefully, and sequencing should be systematic when comparing across species.

Consequences for genetic diversity measures—Several indices of molecular variance are affected by differences between fragment length and number of repeats. The most important differences in molecular variance were observed when comparing the two species. Number of alleles (observed or effective) was much higher in the fragment lengths, possibly due to the added variation in the flanking regions compared to the number of repeats. Expected heterozygosity was higher than observed heterozygosity in both the fragment length and repeats data sets, but inbreeding was higher in the repeat numbers than the fragment length, also perhaps due to the generally higher diversity in the latter. These conclusions support other studies (Blankenship et al., 2002; Vali et al., 2008), even though the direction of the differences might not be the same as here. For example, Epperson (2005) and Rousset (1996) found that allelic diversity was underestimated with fragment lengths compared to repeat number, and that gene flow was overestimated. In *Polygala*, allelic diversity was higher when estimated with fragment lengths than with repeat numbers, as was gene flow (especially between species in the Lake Wales Ridge and Mount Dora populations).

The differences in estimates from the three data sets were less substantial, however, within *P. lewtonii*. Values were comparable, but the directionality of variation between populations within the species varied between repeats and fragments. Also,

some analyses yielded very different results (as in Appendix S4). Noticeably, the estimations of gene flow were affected by the data set used. Fragment lengths showed substantial gene flow between populations, while the repeats themselves showed none. This might be due to the separation of homoplasious repeats with variations in the flanking regions, in accordance with several studies (Goldstein et al., 1995; Hedrick, 1999; Makova et al., 2000; Selkoe and Toonen, 2006). Possibly for similar reasons, the clustering of populations within a rare endemic is only feasible with the fragment lengths, and not the repeats only. Furthermore, we ran analyses to detect bottlenecks and, consistent with the migration results, the fragments data set showed signs of bottlenecks in the Mount Dora populations, whereas the repeats data set showed no signs of recent bottleneck.

It is important to note that flanking regions evolve at a different rate than repeat number, and so reflect a different evolutionary history. The past history and gene flow reflect this difference and can be used to address different questions. For example, the use of flanking regions for the delimitation of closely related species is useful in our study and can be extended to systematics studies at shallow levels, as well as to conservation planning.

Recommendations for the use of microsatellites within and between closely related taxa—We recommend that microsatellite studies include the sequencing of one or two individuals per population. A careful design of microsatellite primers, close to the repeats, could also prevent sequence variation in the flanking regions from being interpreted as variation in repeat number. However, in view of the high polymorphism in the flanking regions, this strategy could increase the risk of null alleles. Sequencing of the flanking regions could be particularly useful for population-level studies between species, species delimitation, and phylogeographic studies of a clade of closely related taxa. Low-level phylogenetic studies could also benefit from targeting the microsatellite flanking regions, as has proved useful for resolving relationships among closely related species (Zardoya et al., 1996; Rossetto et al., 2002; Chatrou et al., 2009). The strongest recommendation this study conveys is the absolute necessity of sequencing several individuals when using markers developed in a related species to the focal species. The added cost and time will be small, and will avoid potential major underlying problems further in the study that could jeopardize the legitimate use of one or more loci.

CONCLUSIONS

Our study shows that the risk of homoplasia in microsatellites is real, with different types of mutations present at all three loci. The directionality of those mutations in the flanking regions of the microsatellites is inconsistent with past studies, and so the substitution of fragment length for repeat number should not be assumed. Overall, it seems that most mutations create homoplasia across species, as well as between populations within the same species. A lower but significant proportion of mutations in the flanking region also created homoplasia between individuals within the same population. The overwhelming majority of mutations will lead to a decrease in the estimation of the genetic diversity of populations and species, but an increase in the estimation of gene flow between populations that share homoplasious alleles. Our recommendations, especially for sequencing fragments when using markers developed in one species to

study or compare a close relative, are relatively quick and inexpensive and will ensure that the researcher avoids any major indels in the flanking region that are likely to skew results.

LITERATURE CITED

- ABLETT, G., H. HILL, AND R. J. HENRY. 2006. Sequence polymorphism discovery in wheat microsatellite flanking regions using pyrophosphate sequencing. *Molecular Breeding* 17: 281–289.
- ADAMS, R. I., K. M. BROWN, AND M. B. HAMILTON. 2004. The impact of microsatellite electromorph size homoplasia on multilocus population structure estimates in a tropical tree (*Corythophora alba*) and an anadromous fish (*Morone saxatilis*). *Molecular Ecology* 13: 2579–2588.
- ANMARKRUD, J. A., O. KLEVEN, L. BACHMANN, AND J. T. LIFJELD. 2008. Microsatellite evolution: Mutations, sequence variation, and homoplasia in the hypervariable avian microsatellite locus HrU10. *BMC Evolutionary Biology* 8: 138.
- BLANKENSHIP, S. M., B. MAY, AND D. HEDGECOCK. 2002. Evolution of a perfect simple sequence repeat locus in the context of its flanking sequence. *Molecular Biology and Evolution* 19: 1943–1951.
- CHATROU, L. W., M. P. ESCRIBANO, M. A. VIRUEL, J. W. MAAS, J. E. RICHARDSON, AND J. I. HORMAZA. 2009. Flanking regions of monomorphic microsatellite loci provide a new source of data for plant species-level phylogenetics. *Molecular Phylogenetics and Evolution* 53: 726–733.
- CRANDALL, K. A., O. R. BININDA-EMONDS, G. M. MACE, AND R. K. WAYNE. 2000. Considering evolutionary processes in conservation biology. *Trends in Ecology & Evolution* 15: 290–295.
- CULLINGS, K. W. 1992. Design and testing of a plant-specific PCR primer for ecological and evolutionary studies. *Molecular Ecology* 1: 233–240.
- CULVER, M., M. MENOTTI-RAYMOND, AND S. O'BRIEN. 2001. Patterns of size homoplasia at 10 microsatellite loci in *Pumas* (*Puma concolor*). *Molecular Biology and Evolution* 18: 1151–1156.
- DOLEŽEL, J., J. GREILHUBER, AND J. SUDA. 2007. Estimation of nuclear DNA content in plants using flow cytometry. *Nature Protocols* 2: 2233–2244.
- DOYLE, J. J., AND J. L. DOYLE. 1987. A rapid DNA isolation procedure for small quantities of fresh leaf tissue. *Phytochemical Bulletin* 19: 11–15.
- DURAND, E., F. JAY, O. GAGGIOTTI, AND O. FRANCOIS. 2009. Spatial inference of admixture proportions and secondary contact zones. *Molecular Biology and Evolution* 26: 1963–1973.
- EDWARDS, C. E., M. ARAKAKI, P. F. QUINTANA-ASCENCIO, D. E. SOLTIS, AND P. S. SOLTIS. 2007. Isolation and characterization of microsatellite loci from the endangered highlands scrub hypericum (*Hypericum cumulicola*). *Molecular Ecology Notes* 7: 1135–1137.
- EDWARDS, C., D. SOLTIS, AND P. SOLTIS. 2008. Isolation, characterization and cross-species amplifications of microsatellite loci from *Conradina*. *Molecular Ecology Resources* 8: 363–366.
- ELLSTRAND, N., AND D. ELAM. 1993. Population genetic consequences of small population-size: Implications for plant conservation. *Annual Review of Ecology and Systematics* 24: 217–242.
- EPPELSON, B. K. 2005. Mutation at high rates reduces spatial structure within populations. *Molecular Ecology* 14: 703–710.
- ESTOUP, A., P. JARNE, AND J.-M. CORNUET. 2002. Homoplasia and mutation model at microsatellite loci and their consequences for population genetics analysis. *Molecular Ecology* 11: 1591–1604.
- EXCOFFIER, L., G. LAVAL, AND S. SCHNEIDER. 2005. Arlequin (version 3.0): An integrated software package for population genetics data analysis. *Evolutionary Bioinformatics Online* 1: 47–50.
- FRANKHAM, R. 2003. Genetics and conservation biology. *Comptes Rendus Biologies* 326: 22–29.
- FRANKHAM, R. 2005. Genetics and extinction. *Biological Conservation* 126: 131–140.
- GERMAIN-AUBREY, C., P. SOLTIS, D. SOLTIS, AND M. GITZENDANNER. 2011. Microsatellite marker development for the federally listed *Prunus geniculata* (Rosaceae). *American Journal of Botany* 98: e58–e60.

- GITZENDANNER, M., AND P. SOLTIS. 2000. Patterns of genetic variation in rare and widespread plant congeners. *American Journal of Botany* 87: 783–792.
- GOLDSTEIN, D. B., A. RUIZ BARES, L. L. CAVALLI-SFORZAF, AND M. W. FELDMAN. 1995. An evaluation of genetic distances for use with microsatellite loci. *Genetics* 139: 463–471.
- GRIMALDI, M.-C., AND B. CROUAEU-ROY. 1997. Microsatellite allelic homoplasy due to variable flanking sequences. *Journal of Molecular Evolution* 44: 336–340.
- HARDY, O., AND X. VEKEMANS. 2002. SPAGeDi: A versatile computer program to analyse spatial genetic structure at the individual or population levels. *Molecular Ecology Notes* 2: 618–620.
- HARE, E. E., AND J. S. JOHNSTON. 2011. Genome size determination using flow cytometry of propidium iodide-stained nuclei. In V. Orgogozo and M. V. Rockman [eds.], *Methods in molecular biology*, vol. 772: Molecular methods for evolutionary genetics, 3–12. Humana Press, Totowa, New Jersey, USA.
- HEDRICK, P. 1999. Perspective: Highly variable loci and their interpretation in evolution and conservation. *Evolution* 53: 313–318.
- HEY, J. 2010. Isolation with migration models for more than two populations. *Molecular Biology and Evolution* 27: 905–920.
- HEY, J., AND R. NIELSEN. 2007. Integration within the Felsenstein equation for improved Markov chain Monte Carlo methods in population genetics. *Proceedings of the National Academy of Sciences, USA* 104: 2785–2790.
- JAKOBSSON, M., AND N. ROSENBERG. 2007. CLUMPP: A cluster matching and permutation program for dealing with label switching and multimodality in analysis of population structure. *Bioinformatics* 23: 1801–1806.
- KALIA, R. K., M. K. RAI, S. KALIA, R. SINGH, AND A. K. DHAWAN. 2010. Microsatellite markers: An overview of the recent progress in plants. *Euphytica* 177: 309–334.
- LOPEZ-VINYALLONGA, S., M. ARAKAKI, N. GARCIA-JACAS, A. SUSANNA, M. A. GITZENDANNER, D. E. SOLTIS, AND P. S. SOLTIS. 2010. Isolation and characterization of novel microsatellite markers for *Arctium minus* (Compositae). *American Journal of Botany* 97: e4–e6.
- MAKOVA, K. D., A. NEKRUTENKO, AND R. J. BAKER. 2000. Evolution of microsatellite alleles in four species of mice (genus *Apodemus*). *Journal of Molecular Evolution* 51: 166–172.
- MATSUOKA, Y., S. E. MITCHELL, S. KRESOVICH, M. GOODMAN, AND J. DOEBLEY. 2002. Microsatellites in *Zea*: Variability, patterns of mutations, and use for evolutionary studies. *Theoretical and Applied Genetics* 104: 436–450.
- MEIRMANS, P. G., AND P. H. VAN TIENDEREN. 2004. GENOTYPE and GENODIVE: Two programs for the analysis of genetic diversity of asexual organisms. *Molecular Ecology Notes* 4: 792–794.
- MOGG, R., J. BATLEY, S. HANLEY, D. EDWARDS, H. O’SULLIVAN, AND J. EDWARDS. 2002. Characterization of the flanking regions of *Zea mays* microsatellites reveals a large number of useful sequence polymorphisms. *Theoretical and Applied Genetics* 105: 532–543.
- MORGANTE, M., AND A. M. OLIVIERI. 1993. PCR-amplified microsatellites as markers in plant genetics. *Plant Journal* 3: 175–182.
- O’CONNELL, L. M., AND K. RITLAND. 2004. Somatic mutations at microsatellite loci in Western Redcedar (*Thuja plicata*: Cupressaceae). *Journal of Heredity* 95: 172–176.
- OUBORG, N., Y. PIQUOT, AND J. VAN GROENENDAEL. 1999. Population genetics, molecular markers and the study of dispersal in plants. *Journal of Ecology* 87: 551–568.
- PEAKALL, R., AND P. SMOUSE. 2006. GenAIEX 6: Genetic analysis in Excel. Population genetic software for teaching and research. *Molecular Ecology Notes* 6: 288–295.
- PETTIT, R. J., A. EL MOUSADIK, AND O. PONS. 1998. Identifying populations for conservation on the basis of genetic markers. *Conservation Biology* 12: 844–855.
- PUTMAN, A. I., AND I. CARBONE. 2014. Challenges in analysis and interpretation of microsatellite data for population genetic studies. *Ecology and Evolution* 4: 4399–4428.
- QUELOZ, V., A. DUO, T. N. SIEBER, AND C. R. GRUNIG. 2010. Microsatellite size homoplasies and null alleles do not affect species diagnosis and population genetic analysis in a fungal species complex. *Molecular Ecology Resources* 10: 348–367.
- RAMAKRISHNAN, U., AND J. MOUNTAIN. 2004. Precision and accuracy of divergence time estimates from STR and SNPSTR variation. *Molecular Biology and Evolution* 21: 1960–1971.
- RAYMOND, M., AND F. ROUSSET. 1995. GENEPOP (Version 1.2): Population genetics software for exact tests and ecumenicism. *Journal of Heredity* 86: 248–249.
- REED, D. H., AND R. FRANKHAM. 2003. Correlation between fitness and genetic diversity. *Conservation Biology* 17: 230–237.
- REYES, J. F., C. H. S. CHAN, AND M. M. TANAKA. 2012. Impact of homoplasy on variable numbers of tandem repeats and spoligotypes in *Mycobacterium tuberculosis*. *Infection, Genetics and Evolution* 12: 811–818.
- RICE, W. R. 1989. Analyzing tables of statistical tests. *Evolution* 43: 223–225.
- ROSENBERG, N. 2004. DISTRUCT: A program for the graphical display of population structure. *Molecular Ecology Notes* 4: 137–138.
- ROSSETTO, M., J. McNALLY, AND R. J. HENRY. 2002. Evaluating the potential of SSR flanking regions for examining taxonomic relationships in the Vitaceae. *Theoretical and Applied Genetics* 104: 61–66.
- ROUSSET, F. 1996. Equilibrium values of measures of population subdivision for stepwise mutation processes. *Genetics* 142: 1357–1362.
- ROUSSET, F. 2008. GENEPOP’007: A complete re-implementation of the GENEPOP software for Windows and Linux. *Molecular Ecology Resources* 8: 103–106.
- SELKOE, K. A., AND R. J. TOONEN. 2006. Microsatellites for ecologists: A practical guide to using and evaluating microsatellite markers. *Ecology Letters* 9: 615–629.
- SHIRAI, Y., S. IKEDA, AND S. TAJIMA. 2009. Size homoplasy at microsatellite loci in two rose bittering subspecies, *Rhodeus ocellatus kurumeus* and *R. o. ocellatus*. *Japanese Journal of Ichthyology* 56: 165–169.
- SLATKIN, M. 1995. A measure of population subdivision based on microsatellite allele frequencies. *Genetics* 139: 457–462.
- STÁGEL, A., I. GYURJÁN, Z. SASVÁRI, S. LANTERI, M. GANAL, AND I. NAGY. 2009. Patterns of molecular evolution of microsatellite loci in pepper (*Capsicum* spp.) revealed by allele sequencing. *Plant Systematics and Evolution* 281: 251–254.
- THUILLET, A.-C., D. BRU, J. DAVID, P. ROUMET, S. SANTONI, P. SOURDILLE, AND T. BATAILLON. 2002. Direct estimation of mutation rate for 10 microsatellite loci in durum wheat, *Triticum turgidum* (L.) Thell. ssp. *durum* Desf. *Molecular Biology and Evolution* 19: 122–125.
- VÄLI, Ü., A. EINARSSON, L. WAITS, AND H. ELLEGREN. 2008. To what extent do microsatellite markers reflect genome-wide genetic diversity in natural populations? *Molecular Ecology* 17: 3808–3817.
- VAN OOSTERHOUT, C., W. HUTCHINSON, D. WILLS, AND P. SHIPLEY. 2004. MICRO-CHECKER: Software for identifying and correcting genotyping errors in microsatellite data. *Molecular Ecology Notes* 4: 535–538.
- VIGOUROUX, Y., J. S. JAQUETH, Y. MATSUOKA, O. S. SMITH, W. D. BEAVIS, J. S. C. SMITH, AND J. DOEBLEY. 2002. Rate and pattern of mutation at microsatellite loci in maize. *Molecular Biology and Evolution* 19: 1251–1260.
- WATERS, J. M., AND G. P. WALLIS. 2000. Across the Southern Alps by river capture? Freshwater fish phylogeography in South Island, New Zealand. *Molecular Ecology* 9: 1577–1582.
- WEEKLEY, C. W., AND E. S. MENGES. 2012. Burning creates contrasting demographic patterns in *Polygala lewtonii* (Polygalaceae): A cradle-to-grave analysis of multiple cohorts in a perennial herb. *Australian Journal of Botany* 60: 347–357.
- WON, Y., A. SIVASUNDAR, Y. WANG, AND J. HEY. 2005. On the origin of Lake Malawi cichlid species: A population genetic analysis of divergence. *Proceedings of the National Academy of Sciences, USA* 102: 6581–6586.
- ZARDOYA, R., D. M. VOLLMER, C. CRADDOCK, J. T. STREELMAN, S. KARL, AND A. MEYER. 1996. Evolutionary conservation of microsatellite flanking regions and their use in resolving the phylogeny of cichlid fishes (Pisces: Perciformes). *Proceeding of the Royal Society B, Biological Sciences* 263: 1589–1598.