



Africanacetus from the Sub-Antarctic Region: The Southernmost Record of Fossil Beaked Whales

Authors: Gol'Din, Pavel E., and Vishnyakova, Karina A.

Source: Acta Palaeontologica Polonica, 58(3) : 445-452

Published By: Institute of Paleobiology, Polish Academy of Sciences

URL: <https://doi.org/10.4202/app.2011.0097>

BioOne Complete (complete.BioOne.org) is a full-text database of 200 subscribed and open-access titles in the biological, ecological, and environmental sciences published by nonprofit societies, associations, museums, institutions, and presses.

Your use of this PDF, the BioOne Complete website, and all posted and associated content indicates your acceptance of BioOne's Terms of Use, available at www.bioone.org/terms-of-use.

Usage of BioOne Complete content is strictly limited to personal, educational, and non - commercial use. Commercial inquiries or rights and permissions requests should be directed to the individual publisher as copyright holder.

BioOne sees sustainable scholarly publishing as an inherently collaborative enterprise connecting authors, nonprofit publishers, academic institutions, research libraries, and research funders in the common goal of maximizing access to critical research.

Africanacetus from the sub-Antarctic region: The southernmost record of fossil beaked whales

PAVEL E. GOL'DIN and KARINA A. VISHNYAKOVA



Gol'din, P.E. and Vishnyakova, K.A. 2013. *Africanacetus* from the sub-Antarctic region: The southernmost record of fossil beaked whales. *Acta Palaeontologica Polonica* 58 (3): 445–452.

We report two partial skulls of fossil beaked whales (Odontoceti, Ziphiidae) of uncertain age trawled from the sea floor of the sub-Antarctic Indian Ocean (58 to 60°S), representing the southernmost record of the family. The skulls possess diagnostic features of the genus *Africanacetus*, several specimens of which have been recovered from the sea floor off South Africa, but differ from the type and only known species *Africanacetus ceratopsis* in their larger size. This difference may either reflect intraspecific variation or indicate the existence of a hitherto unrecognised species. The two specimens are characterised by unusually developed mesorostral ossifications, combined with maxillary crests occurring in the facial region. Both of the latter are found in a range of extant and extinct ziphiids, and known to be sexually dimorphic in extant beaked whales. These structures may be the result of hypermorphosis driven by sexual selection, and could be involved in male-specific behaviour.

Key words: Mammalia, Cetacea, Ziphiidae, hypermorphosis, sexual selection, Antarctic.

Pavel E. Gol'din [pavelgoldin412@gmail.com], Taurida National University, 4, Vernadsky Avenue, Simferopol, Crimea, 95007 Ukraine;

Karina A. Vishnyakova [karinavishnyakova@gmail.com], South Scientific Research Institute of Marine Fisheries and Oceanography, 2, Sverdlova St., Kerch, Crimea, 98000 Ukraine and Taurida National University, 4, Vernadsky Avenue, Simferopol, Crimea, 95007 Ukraine.

Received 18 August 2011, accepted 11 December 2011, available online 15 December 2011.

Copyright © 2013 P.E. Gol'din and K.A. Vishnyakova. This is an open-access article distributed under the terms of the Creative Commons Attribution License, which permits unrestricted use, distribution, and reproduction in any medium, provided the original author and source are credited.

Introduction

Beaked whales (Odontoceti, Ziphiidae) are a diverse family of cetaceans generally occupying open-water and deep-water habitats, and their fossil remains are frequently dredged from the sea floor (e.g., Whitmore et al. 1986; Bianucci et al. 2007). The Southern Hemisphere record of extinct ziphiids was recently greatly expanded by the description of an exceptionally diverse, possibly Miocene assemblage recovered from the sea bed off the coast of South Africa (Bianucci et al. 2007, 2008). Among the species identified in the South African assemblage, the most abundantly represented was *Africanacetus ceratopsis* Bianucci, Lambert, and Post, 2007, which recent phylogenetic analyses suggest to be closely related to the extant genera *Hyperoodon* and *Mesoplodon* (subfamily Hyperoodontinae sensu Muizon, 1991 or subtribe Hyperoodontina sensu Moore, 1968). Here, we describe two new specimens of fossil ziphiids trawled from the bottom of the sub-Antarctic Indian Ocean, and refer them to the genus *Africanacetus*. In addition, we provide a discussion of their

morphology, and their implications for the geographical distribution of the genus.

Material and methods

In 1976, fragments of two fossil cetacean skulls were trawled from the sea floor by the vessel *Karadag* in the southern part of Banzare Bank in the sub-Antarctic Indian Ocean (approximately 58 to 60°S, 74 to 81°E; exact coordinates unknown). The specimens are housed in the museum of the South Scientific Research Institute of Marine Fisheries and Oceanography, Kerch, Ukraine and consist of proximal portions of rostra with associated fragments of the facial region up to the external nares (maxilla, premaxilla, and vomer) (Figs. 1–4). Measurements are listed in Table 1. Our anatomical terminology follows Mead and Fordyce (2009).

Institutional abbreviations.—YugNIRO, South Scientific Research Institute of Marine Fisheries and Oceanography, Kerch, Ukraine; SAM, Iziko South African Museum, Cape Town, South Africa.

Table 1. Cranial measurements (in mm) of *Africanacetus* sp. from Banzare Bank. Asterisks indicate estimated values.

Measurement	YugNIRO 408	YugNIRO 409
Length of rostral portion of maxilla	390+	300+
Maximum width of mesorostral groove	54	47
Width of rostrum at prominential notch	195	189
Width of rostrum at antorbital notch	290*	314*
Width of premaxillae at prominential notch	108	87
Preorbital width of skull	390+	350+
Width between apices of dome-shaped maxillary crests	165	194
Maximum width of vomer	54*	47
Maximum height of rostrum	140	116+
Distance between large maxillary (dorsal infraorbital) foramina	131	136
Distance between maxillary tubercles	251	287
Distance from apex of left dome-shaped maxillary crest to sagittal midline	–	104
Distance from apex of right dome-shaped maxillary crest to sagittal midline	–	118
Distance from apex of left dome-shaped maxillary crest to midline of rostrum at the level of the maxillary tubercles	–	108
Distance from apex of right dome-shaped maxillary crest to midline of rostrum at the level of the maxillary tubercles	–	138

Systematic palaeontology

Order Cetacea Brisson, 1762

Suborder Odontoceti Flower, 1867

Family Ziphiidae Gray, 1850

Subfamily Hyperoodontinae Gray, 1866

Genus *Africanacetus* Bianucci, Lambert, and Post, 2007

Type species: Africanacetus ceratopsis Bianucci, Lambert, and Post, 2007; trawled from the Atlantic sea floor off the coast of South Africa; Neogene.

Africanacetus sp.

Material.—YugNIRO 408–409, partial skulls including portions of the rostrum.

Age and horizon.—Unknown. Previous studies derived tentative Neogene age estimates for trawled specimens of fossil ziphiids from associated phosphorites (Bianucci et al. 2007). However, no phosphate concretions are present on the surface of the specimens described here, and no Neogene events of phosphorite formation have been described for Banzare Bank (Burnett and Riggs 1990; Baturin 2004).

Description.—The two skulls are larger than *Africanacetus ceratopsis* (Bianucci et al. 2007, 2008) and comparable in size to the extant *Indopacetus pacificus* (Dalebout et al. 2003), suggesting a total body length of about 6 m (Table 1). All of the sutures are well fused, indicating that the specimens represent adult individuals.

The rostrum is high and robust, and only slightly narrows anteriorly in dorsal view (Fig. 1). In lateral profile (Fig. 3), it is similar to that of the extant *Mesoplodon densirostris* and *M. europaeus*, but much wider transversely and more robust. While damage to the ventral surface prevents

any precise estimate of the height of the rostrum for either specimen, its proximal portion seems to have been at least as high as wide. The vomer is pachyosteosclerotic (i.e., both dense and swollen) within the rostrum, as well as in the ventral narial region (Fig. 5), and completely fills the mesorostral groove. As in *A. ceratopsis*, the vomer bears a median suture and is strongly elevated above the dorsal margin of the premaxilla, overhanging the latter along its entire preserved length. In lateral view, the part of vomer elevated above the premaxilla and maxilla accounts for about one half of the total height of the rostrum.

The rostral part of the premaxilla is transversely narrow and fused to the vomer along a barely visible suture. As in *A. ceratopsis*, the premaxillary sac fossa is shallow and slopes laterally. In anterior view, the premaxillary foramina are located slightly dorsal to the maxillary (dorsal infraorbital) foramina. The suture between the maxilla and premaxilla is visible, but mostly obliterated owing to fusion of these two bones. Posterolaterally, the rostrum terminates in a shallow prominential notch bordered laterally by a small maxillary tubercle. The lateral margin of the maxilla is distinctly keeled along the rostrum and ascends towards the prominential notch.

As in *A. ceratopsis*, a low crest runs posteriorly from the maxillary tubercle, joining a more posteromedially situated, dome-shaped maxillary crest at its posterior end. The dome-shaped crest has a steep medial and a gradually sloping lateral margin, giving the maxilla a “bird-wing” profile in anterior or posterior view. This profile is distinct from the symmetrical, semi-rounded maxillary crests in the extant *Hyperoodon planifrons*. The anteromedial portion of the facial region of the skull is slightly asymmetrical, with the facial portion of the right maxilla being larger than its counterpart on the left. This results in the right maxillary crest being located more posterolaterally than the left one, as can be seen when comparing measurements 12/13 and 14/15 (Table 1).

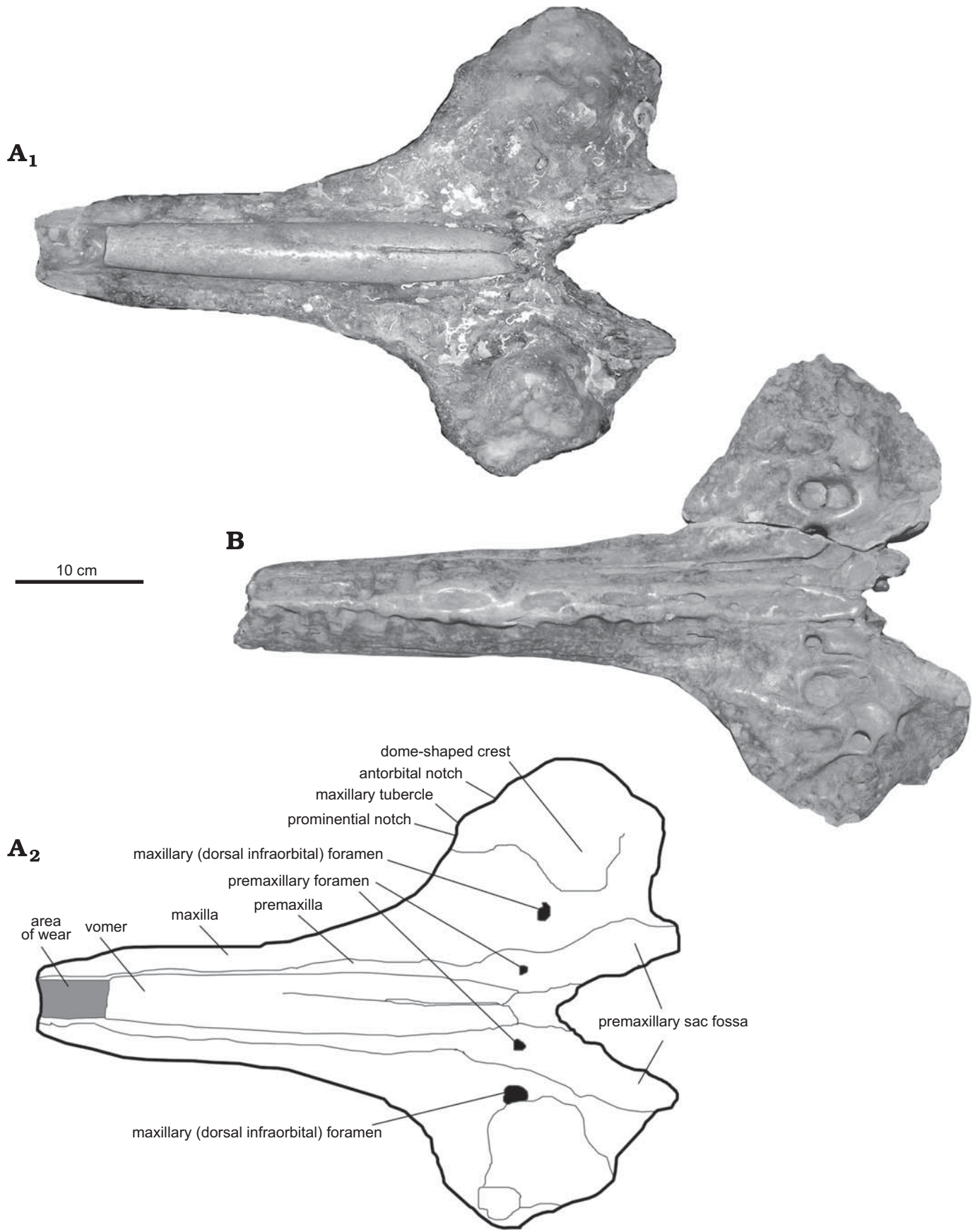


Fig. 1. The beaked whale *Africanacetus* sp., skull in dorsal view. **A.** YugNIRO 409, photograph (**A₁**) and explanatory drawing (**A₂**). **B.** YugNIRO 408.

<http://dx.doi.org/10.4202/app.2011.0097>

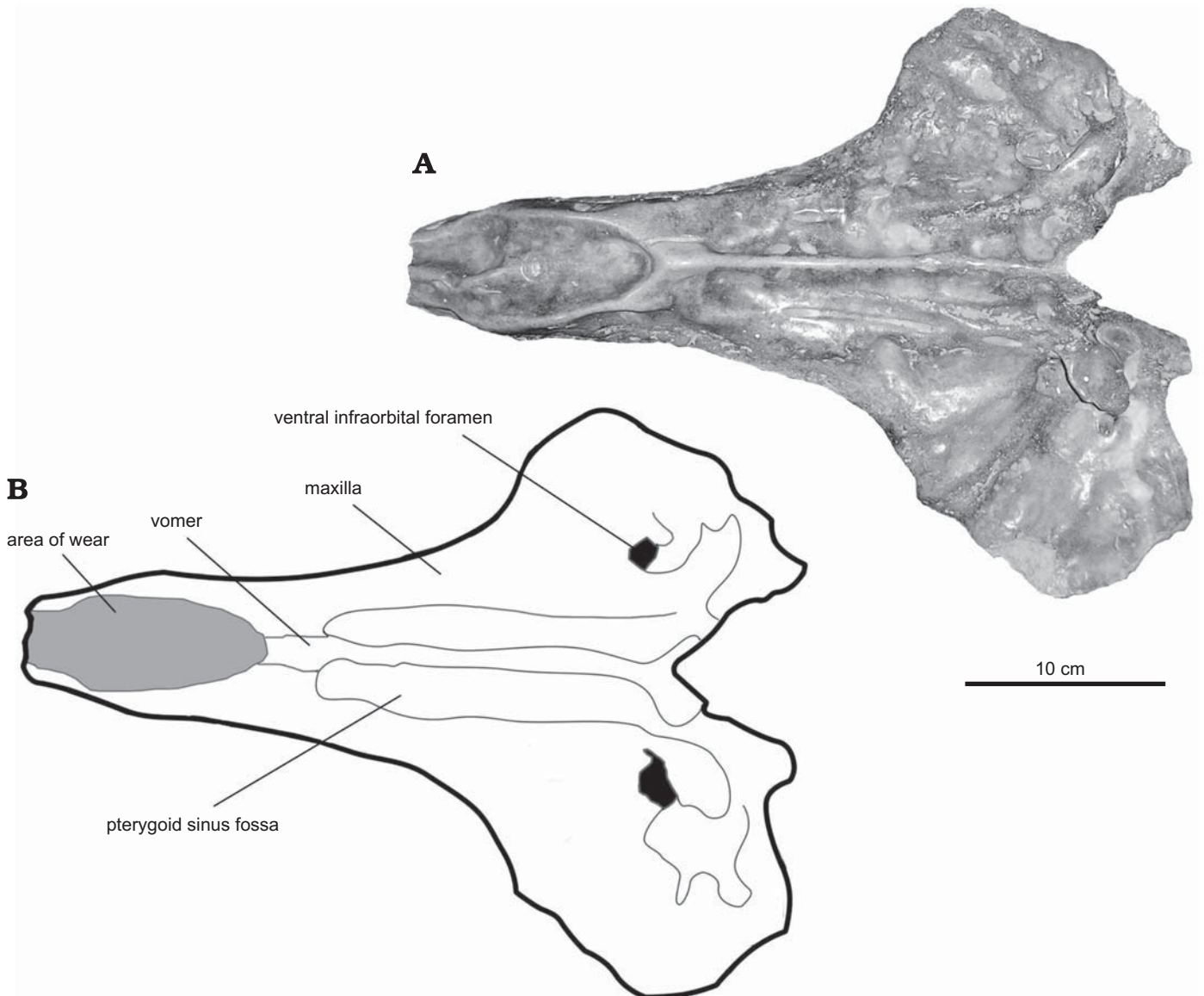


Fig. 2. The beaked whale *Africanacetus* sp., skull (YugNIRO 409) in ventral view. **A.** Photograph. **B.** Explanatory drawing.

On the ventral surface of the rostrum, the pterygoid sinus fossa extends to a point approximately 90–100 mm anterior to the prominent notch. Extensive wear and damage has obliterated most of the other morphological details. The maxilla-palatine suture is not visible, likely owing to the poor state of preservation of the bone surface.

Discussion

Comparison with the type series and variation.—While the two skulls described here share with *Africanacetus ceratopsis* the presence of a dome-like maxillary crest and a laterally sloping premaxillary sac fossa to the exclusion of all other described ziphiid taxa, they are larger than other specimens assigned to this species. This difference is particularly

evident in the antorbital region, where the width of the rostrum at the level of antorbital notch is about 1.5 times greater than in the three specimens of *A. ceratopsis* for which measurements have been reported (Bianucci et al. 2007). The Banzare Bank skulls further differ from the holotype of *A. ceratopsis* in their more developed mesorostral ossification of the vomer, although, as pointed out by Bianucci et al. (2007), this trait is highly variable among the specimens reported from South Africa.

These differences are either the result of intraspecific variation, arising from differences in age, ecology, geographical distribution and/or sexual dimorphism, or may indicate the existence of a separate species. The range and limits of within-species variation of cranial measurements are insufficiently studied for cetaceans in general. Although large amounts of data were obtained for many species, published summaries are

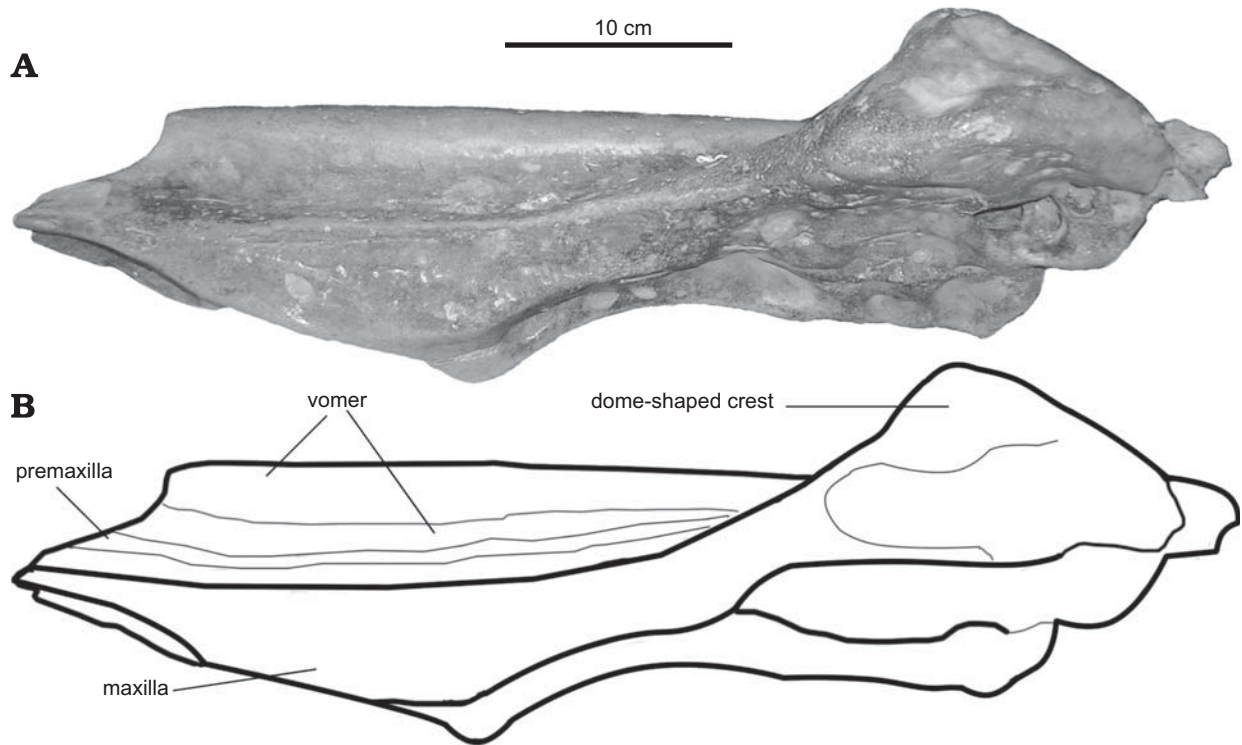


Fig. 3. The beaked whale *Africanacetus* sp., skull (YugNIRO 409) in lateral view. **A.** Photograph. **B.** Explanatory drawing.

scarce. One of the most comprehensive works is the monograph by Perrin (1975) describing variation in spotted dolphins (*Stenella attenuata*) and spinner dolphins (*S. longirostris*). While the latter analysis found age to be the most important factor in determining intraspecific variation, it also identified some considerable individual differences among adults in terms of, for example, the preorbital width of the skull, or the width of the nares and rostrum (see Perrin 1975: table 13a). Variation on a similar scale is observed in the harbour porpoise *Phocoena phocoena* across geographical regions (PG, personal observation). While both sexual dimorphism and geographical or ecological (ecotype or subspecies) differences contribute to this variation, the latter seem to be the more important determinants of size in small delphinoids (Perrin 1975). By contrast, strong sexual dimorphism is characteristic of some extant ziphiids. In particular, the observed size variation in *Africanacetus* is comparable to that seen among adults of the northern bottlenose whale *Hyperoodon ampullatus* (Hardy 2005), with large old males having skulls about 1.5 larger than females. Sex and probably age as causes for variation are further corroborated by a link between the latter and the development of the mesorostral ossification in extant and fossil beaked whales (see below).

Based on the high degree of bone fusion and the occurrence of bony structures, we identify the present specimens as adult males, and it is therefore possible that they may represent new occurrences of *Africanacetus ceratopsis*. Nevertheless, the size difference between the new material and the previously described specimens of *A. ceratopsis* remains remarkably great. Taken together with the fact that at least one speci-

men of *A. ceratopsis* (SAM PQ 3002; Bianucci et al. 2007) shows a level of mesorostral ossification comparable to the Banzare Bank skulls despite being smaller than the latter, and given the additional uncertainty regarding the age of both the new specimens and the type series of *A. ceratopsis*, the possibility of a new species can therefore not be excluded. Indeed, pairs or complexes of closely related species differing in body and skull size are widespread across mammalian taxa, including cetaceans (e.g., *Kogia breviceps* and *K. simus*, *Phocoena spinipinnis* and *P. sinus*), and closely related species of extant beaked whales usually display similar body sizes (see, for example, the molecular phylogeny of *Mesoplodon* of Dalebout et al. 2008). Based on these considerations, any more definite referral of the fossils from Banzare Bank must await the discovery of more complete material.

Unusual mesorostral ossification combined with facial skull crests.

—The presence of a mesorostral ossification formed by the vomer is well documented for the extant genera *Mesoplodon* and *Ziphius*, as well as several extinct ziphiids (Lambert 2005; Bianucci et al. 2007, 2008; Lambert et al. 2011). In those extant taxa in which it occurs, the mesorostral ossification is strongly sexually dimorphic and considerably more developed in adult males (e.g., True 1910; McCann 1965; Moore 1968; Besharse 1971; Heyning 1984; MacLeod and Herman 2004). Proposed explanations for the function of the mesorostral ossification (MacLeod 2002; Lambert et al. 2011) range from diving ballast (Buffrénil and Casinos 1995; Buffrénil et al. 2000) to sound transmission (Zioupos et al. 1997; Cranford et al. 2008; Buffrénil and Lambert 2011) and

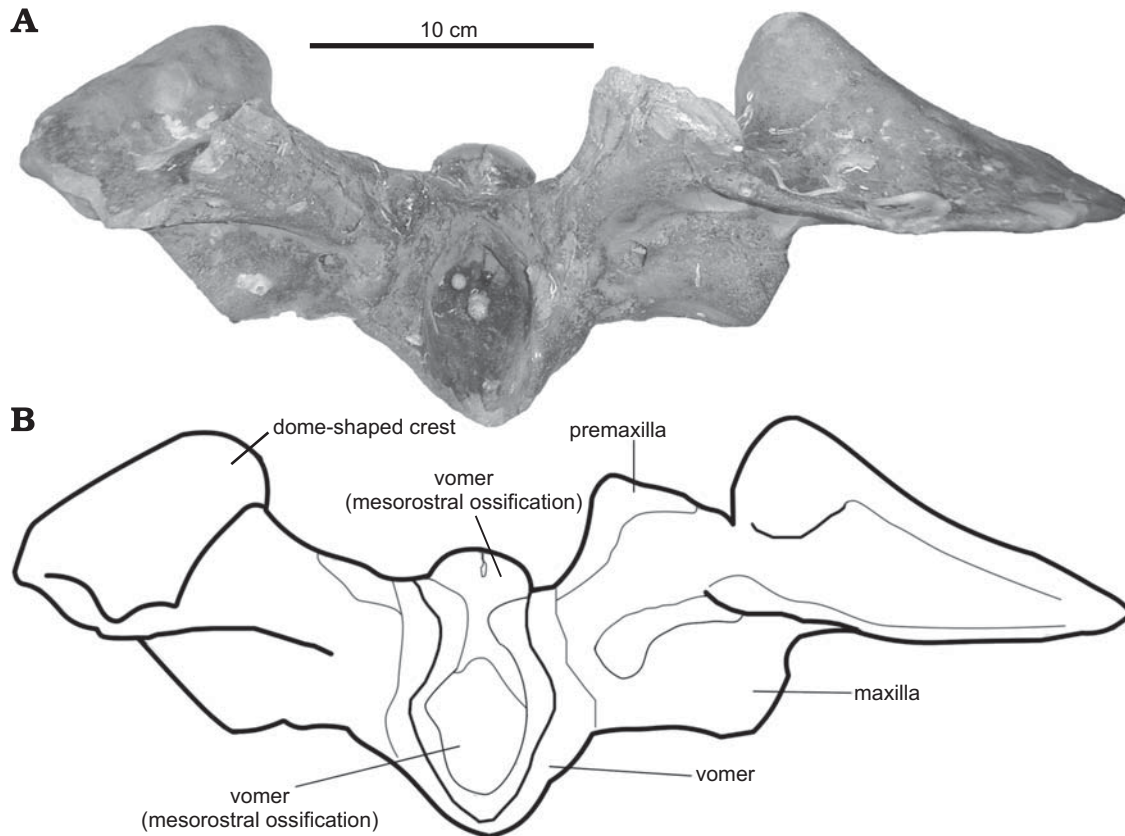


Fig. 4. The beaked whale *Africanacetus* sp., skull (YugNIRO 409) in posterior view. **A.** Photograph. **B.** Explanatory drawing.

the strengthening of the male rostrum for aggressive male-male interactions (Heyning 1984; MacLeod 2002). Unlike *Mesoplodon* and *Ziphius*, members of the extant genus *Hyperoodon* lack a mesorostral ossification, and instead are characterised by extremely high maxillary crests. In *H. ampullatus*, the crests are larger in males and vary in their development with age. By contrast, in *H. planifrons* the maxillary crests are underdeveloped even in adult males, although they are still higher than in *Mesoplodon*. Finally, apart from the mesorostral ossification and the development of bony crests, fusion of the premaxillae in some fossil ziphiids has been sug-

gested as a third form of sexual dimorphism not seen in any extant species (Dooley 2010; Lambert et al. 2010).

Both a mesorostral ossification and high maxillary crests occur, and indeed are well developed, in the specimens of *Africanacetus* described here. While the mesorostral ossification of the latter resembles that of *Mesoplodon* and several extinct species in being formed by the vomer and bearing a median suture, it is more hypertrophied than in any of these taxa, except for the extinct *Mesoplodon tumidirostris* (see Miyazaki and Hasegawa 1992), very old individuals of *Ziphius cavirostris*, and some specimens of *Africanacetus ceratopsis* (e.g., SAM PQ 3002).

The bone histology of ziphiids with its complex pattern combining pachyosteosclerotic and osteoporotic structures (Lambert et al. 2011) has been interpreted as an expression of peramorphosis (Alberch et al. 1979; Ricqlès and Buffrénil 2001), with the hypertrophied mesorostral ossification being the result of hypermorphosis (Beer 1930), and the osteoporotic bone characterising other parts of the skeleton arising from predisplacement (“gerontomorphosis”). Peramorphosis has been specifically suggested for *Mesoplodon densirostris* (MacLeod and Herman 2004: 183), and the rostrum and facial skull of beaked whales show several additional traits which may also be peramorphic, such as fusion of the skull bones and bizarre bony structures (crests and swellings) developing in adulthood. Peramorphosis and hypermorphosis have been suggested to be the result of sexual selection in a

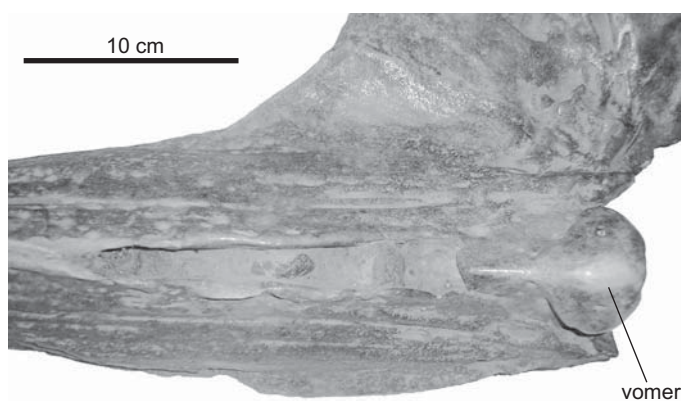


Fig. 5. The beaked whale *Africanacetus* sp. (YugNIRO 408), narial region of the skull in ventral view.



Fig. 6. Geographical range of the beaked whale *Africanacetus*. 1, type area; 2, Banzare Bank (from where the present material was recovered).

broad variety of animals (Gould 1977; Kelly and Adams 2010), and it is possible that the latter also drove the evolution of the hypertrophied mesorostral ossification and the overdeveloped maxillary crests of *Africanacetus*. In this case, the fossils from Banzare Bank whales might represent an overgrown descendant of *A. ceratopsis* from South Africa, although testing this hypothesis must await the discovery of further and better preserved specimens.

Geographical distribution.—The present material represents the southernmost record of any fossil beaked whale, replacing an earlier report of a partial skull photographed on the sea floor at 54°S, 150°E (Whitmore and Kaltenbach 2008: fig. 14). Our specimens were found in the sub-Antarctic region of the Indian Ocean, approximately 6,000 km from the South African type locality (Fig. 6), thus possibly indicating a circum-Antarctic distribution of *Africanacetus*. Interestingly, models describing the ranges of extant odontocetes predict their highest diversity in temperate waters of the Southern Hemisphere, with few species occurring in the sub-Antarctic region (Kaschner et al. 2011). As far as can be judged by the limited number of specimens available, and bearing in mind the caveat of potential sampling biases, this seems to be reflected in the distribution of fossil ziphiids: while the waters around South Africa have yielded a rich Neogene ziphiid fauna (Bianucci et al. 2007, 2008), the record of fossil ziphiids from the sub-Antarctic is relatively scarce.

A circum-Antarctic range is extremely common among extant ziphiids, and has been observed for all extant austral ziphiids except *Mesoplodon traversii*, for which the range is unknown (Rice 1998; MacLeod 2009). While many of these

species are largely bound to either higher latitudes or more temperate waters, others (e.g., *Hyperoodon planifrons*) extend from polar to subtropical waters, thus covering both of the known localities of *Africanacetus* (Taylor et al. 2008). *Africanacetus* seems to have been relatively abundant, with 9 out of the 32 South African fossil ziphiid specimens reported by Bianucci et al. (2007) belonging to this genus, in addition to the two skulls reported in this study. Based on this, future discoveries of additional specimens of this genus from austral waters seem likely.

Acknowledgements

The authors thank Nikolay Ivanin, Ivan Timonin, Nikolay Kononov, Evgeny Gubanov, Valentin Serbin, Illia Slypko, and Nikolay Kukharev (YugNIRO) for their assistance and for data related to the examined specimens. We are grateful to Vincent Ridoux and Willy Dabin (University of La Rochelle, France), Vladimir Lobkov (Odessa National University, Odessa, Ukraine), Gennady Baryshnikov (Zoological Institute of the Russian Academy of Sciences, St. Petersburg, Russia), and Mogens Andersen (Zoological Museum of the University of Copenhagen, Denmark) for providing access to collections of extant cetaceans. We also thank Colin MacLeod (University of Aberdeen, UK) and Olivier Lambert (Royal Belgian Institute of Natural Sciences, Brussels, Belgium) for providing literature and numerous helpful remarks on an early draft of the manuscript, Olivier Lambert for providing photographs of *Africanacetus ceratopsis*, Giovanni Bianucci (University of Pisa, Italy) and Olivier Lambert for their helpful reviews, and Felix Marx (University of Otago, Dunedin, New Zealand) for editing and proofreading the manuscript. This study was partially supported by a Sepkoski Grant from the Paleontological Society International Research Program.

References

- Alberch, P., Gould, S.J., Oster, G.F., Wake, D.B. 1979. Size and shape in ontogeny and phylogeny. *Paleobiology* 5: 296–317.
- Baturin, G.N. 2004. *Fosfatonakoplenie v okeane* [in Russian]. 464 pp. Nauka, Moskva.
- Beer, G.R. de. 1930. *Embryology and Evolution*. 116 pp. Clarendon Press, Oxford.
- Besharse, J.C. 1971. Maturity and sexual dimorphism in the skull, mandible and teeth of the beaked whale *Mesoplodon densirostris*. *Journal of Mammalogy* 52: 297–315.
- Bianucci, G., Lambert, O., and Post, K. 2007. A high diversity in fossil beaked whales (Mammalia, Odontoceti, Ziphiidae) recovered by trawling from the sea floor off South Africa. *Geodiversitas* 29: 561–618.
- Bianucci, G., Post, K., and Lambert, O. 2008. Beaked whale mysteries revealed by seafloor fossils trawled off South Africa. *South African Journal of Science* 104: 140–142.
- Burnett, W.C. and Riggs, S.R. (eds.) 1990. *Phosphate Deposits of the World, Volume 3. Neogene to Modern Phosphorites*. 464 pp. Cambridge University Press, Cambridge.
- Buffrénil, V. de and Casinos, A. 1995. Observations histologiques sur le rostre de *Mesoplodon densirostris* (Mammalia, Cetacea, Ziphiidae): le tissu osseux le plus dense connu. *Annales des Sciences Naturelles – Zoologie et Biologie Animale* 16: 21–32.
- Buffrénil, V. de and Lambert, O. 2011. Histology and growth pattern of the pachyosteosclerotic premaxillae of the fossil beaked whale *Aporotus recurvirostris* (Mammalia, Cetacea, Odontoceti). *Geobios* 44: 45–56.
- Buffrénil, V. de, Zylberberg, L., Traub, W., and Casinos, A. 2000. Structural

- and mechanical characteristics of the hyperdense bone of the rostrum of *Mesoplodon densirostris* (Cetacea, Ziphiidae): Summary of recent observations. *Historical Biology* 14: 57–65.
- Cranford, T.W., McKenna, M.F., Soldevilla, M.S., Wiggins, S.M., Goldbogen, J.A., Shadwick, R.E., Krysl, P., St. Leger, J.A., Hildebrand, J.A. 2008. Anatomic geometry of sound transmission and reception in Cuvier's beaked whale (*Ziphius cavirostris*). *Anatomical Record* 291: 353–378.
- Dalebout, M.L., Ross, G.J.B., Baker, C.S., Anderson, R.C., Best, P.B., Cockcroft, V.G., Hinsz, H.L., Peddemors, V., and Pitman, R.L. 2003. Appearance, distribution and genetic distinctiveness of Longman's beaked whale, *Indopacetus pacificus*. *Marine Mammal Science* 19: 421–461.
- Dalebout, M.L., Steel, D.J., and Baker, C.S. 2008. Phylogeny of the beaked whale genus *Mesoplodon* (Ziphiidae: Cetacea) revealed by nuclear introns: implications for the evolution of male tusks. *Systematic Biology* 57 (6): 857–875.
- Dooley, A.C. 2010. A middle Miocene beaked whale tooth (Cetacea: Ziphiidae) from the Carmel Church Quarry, Virginia, and implications for the evolution of sexual dimorphism in ziphiids. *Jeffersoniana* 24: 1–11.
- Gould, S.J. 1977. *Ontogeny and Phylogeny*. 501 pp. Belknap Press, Cambridge.
- Hardy, M.D. 2005. *Extent, Development and Function of Sexual Dimorphisms in the Skulls of the Bottlenose Whales (Hyperoodon spp.) and Cuvier's Beaked Whale (Ziphius cavirostris)*. 134 pp. Unpublished M.Sc. thesis, School of Biological Sciences, University of Wales, Bangor.
- Heyning, J.E. 1984. Functional morphology involved in intraspecific fighting of the beaked whale, *Mesoplodon carlhubbsi*. *Canadian Journal of Zoology* 62:1645–1654.
- Kaschner, K., Tittensor, D.P., Ready, J., Gerrodette, T., and Worm, B. 2011. Current and future patterns of global marine mammal biodiversity. *PLoS ONE* 6 (5): e19653.
- Kelly, C.D. and Adams, D.C. 2010. Sexual selection, ontogenetic acceleration, and hypermorphosis generates male trimorphism in Wellington tree weta. *Evolutionary Biology* 37: 200–209.
- Lambert, O. 2005. Systematics and phylogeny of the fossil beaked whales *Ziphirostrum* du Bus, 1868 and *Choneziphius* Duvernoy, 1851 (Cetacea, Odontoceti), from the Neogene of Antwerp (North of Belgium). *Geodiversitas* 27: 443–497.
- Lambert, O., Bianucci, G., and Post, K. 2010. Tusk-bearing beaked whales from the Miocene of Peru: sexual dimorphism in fossil ziphiids? *Journal of Mammalogy* 91:19–26.
- Lambert, O., Buffrénil, V. de, and Muizon, C. de. 2011. Rostral densification in beaked whales: diverse processes for a similar pattern. *Comptes Rendus Palevol* 10: 453–468.
- MacLeod, C.D. 2002. Possible functions of the ultradense bone in the rostrum of Blainville's beaked whale (*Mesoplodon densirostris*). *Canadian Journal of Zoology* 80: 178–184.
- MacLeod, C.D. 2009. Global climate change, range changes and potential implications for the conservation of marine cetaceans: a review and synthesis. *Endangered Species Research* 7: 125–136.
- MacLeod, C.D. and Herman, J.S. 2004. Development of tusks and associated structures in *Mesoplodon bidens* (Cetacea, Mammalia). *Mammalia* 68: 175–184.
- McCann, C. 1965. The mesorostral groove in Ziphiidae, with special reference to its closure by ossification in *Mesoplodon*—Cetacea. *Records of the Dominion Museum (Wellington)* 5: 83–88.
- Mead, J.G. and Fordyce, R.E. 2009. The Therian Skull: A Lexicon with Emphasis on the Odontocetes. *Smithsonian Contributions to Zoology* 627: 1–248.
- Miyazaki, N. and Hasegawa, Y. 1992. A new species of fossil beaked whale, *Mesoplodon tumidirostris* sp. nov. (Cetacea, Ziphiidae) from the Central North Pacific. *Bulletin of the National Science Museum, Tokyo, Series A* 18 (4): 167–174.
- Moore, J.C. 1968. Relationships among the living genera of beaked whales with classifications, diagnoses, and keys. *Fieldiana (Zoology)* 53: 209–298.
- Perrin, W.F. 1975. Variation in spotted and spinner dolphin (genus *Stenella*) in the eastern tropical Pacific and Hawaii. *Bulletin of the Scripps Institution of Oceanography* 21: 1–206.
- Rice, D.W. 1998. Marine mammals of the world. Systematics and distribution. *Society for Marine Mammalogy Special Publication* 4: 1–231.
- Ricqlès, A. de and Buffrénil, V. de 2001. Bone histology, heterochronies and the return of tetrapods to life in water: where are we? In: J.-M. Mazin and V. de Buffrénil (eds.), *Secondary Adaptation of Tetrapods to Life in Water*, 289–310. Verlag Dr. Friedrich Pfeil, München.
- Taylor, B.L., Baird, R., Barlow, J., Dawson, S.M., Ford, J., Mead, J.G., Notarbartolo di Sciara, G., Wade, P., and Pitman, R.L. 2008. *Hyperoodon planifrons*. In: *IUCN 2011. IUCN Red List of Threatened Species. Version 2011.1*. www.iucnredlist.org.
- True, F.W. 1910. An account of the beaked whales of the family Ziphiidae in the collection of the United States National Museum, with remarks of some specimens in other American museums. *Bulletin of the United States National Museum* 73: 1–89.
- Whitmore, F.C. and Kaltenbach, J.A. 2008. Neogene Cetacea of the Lee Creek Phosphate Mine, North Carolina. *Virginia Museum of Natural History Special Publication* 14: 181–269.
- Whitmore, F.C., Morejohn, G.V., and Mullins, H.T. 1986. Fossil beaked whales—*Mesoplodon longirostris* dredged from the ocean bottom. *National Geographic Research* 2: 47–56.
- Ziopoulos, P., Curry, J.D., Casinos, A., and de Buffrénil, V. 1997. Mechanical properties of the rostrum of the whale *Mesoplodon densirostris*, a remarkably dense bony tissue. *Journal of Zoology (London)* 241: 725–737.