

On the gonotheca of *Egmondella producta* (G.O. Sars, 1874) n. comb. (Cnidaria, Hydrozoa)

Author: Schuchert, Peter

Source: Revue suisse de Zoologie, 123(2) : 219-225

Published By: Muséum d'histoire naturelle, Genève

URL: <https://doi.org/10.5281/zenodo.155157>

BioOne Complete (complete.BioOne.org) is a full-text database of 200 subscribed and open-access titles in the biological, ecological, and environmental sciences published by nonprofit societies, associations, museums, institutions, and presses.

Your use of this PDF, the BioOne Complete website, and all posted and associated content indicates your acceptance of BioOne's Terms of Use, available at www.bioone.org/terms-of-use.

Usage of BioOne Complete content is strictly limited to personal, educational, and non - commercial use. Commercial inquiries or rights and permissions requests should be directed to the individual publisher as copyright holder.

BioOne sees sustainable scholarly publishing as an inherently collaborative enterprise connecting authors, nonprofit publishers, academic institutions, research libraries, and research funders in the common goal of maximizing access to critical research.

**On the gonotheca of *Egmundella producta* (G.O. Sars, 1874) n. comb.
(Cnidaria, Hydrozoa)**

Peter Schuchert

Muséum d'histoire naturelle, C.P. 6434, CH-1211 Genève 6, Switzerland. E-mail: peter.schuchert@ville-ge.ch

Abstract: *Egmundella producta* n. comb., commonly used so far in the combination *Lovenella producta*, is re-described based on the type specimens, as well as new material from the NW Atlantic. The gonothecae are large, fan-shaped structures, and the gonophore could be either a medusoid or a medusa. The re-examination of the type material confirmed that it possesses stolon nematophores and nematothecae. Applying currently used generic diagnoses, it becomes necessary to transfer the species to the genus *Egmundella*.

Keywords: Campanulinidae - Leptothecata - gonosome - nematothecae - nematophores - type material.

INTRODUCTION

In 1874, G.O. Sars described a new species of campanulinid hydroid which he named *Calycella producta*. It is a small hydroid, but it was subsequently also found at other places, mostly in deep waters of the North Atlantic and North Pacific Oceans. Although it has been found and described several times, its gonothecae and the sexual reproduction remain inadequately known. Gonothecae were summarily described by Storm (1882) in material from Norway [... on the stolon, smooth, circular, somewhat compressed at the sides, with a short aperture", translation from Bonnevie (1899: 76)]. Vervoort (1985) described putative gonothecae as being sac-shaped structures arising from the hydrorhiza, but he was not sure about his identification of the species.

Additionally, the correct genus for this species has also been controversial for almost a century (Stechow, 1922). The combination *Lovenella producta*, introduced by Hincks (1874a), has been used most frequently, and is the currently accepted combination of most contemporary authors (see synonymy below). This was, however, a temporary solution because the reproduction was unknown and the presence of nematothecae in the type material had not been noted before. As argued below, the binomen *Egmundella producta* seems more appropriate for a campanulinid with stolon nematothecae.

MATERIAL AND METHODS

The new sample from near Bergen was collected by dredging. Material for the museum collection was pre-

served initially in 4% formaldehyde and subsequently transferred to 70% ethanol. Polyps for DNA extraction were preserved in absolute ethanol. For morphological examination techniques and terms see Cornelius (1995a, b) and Schuchert (2012). Microslide preparations were made as follows: the specimen was stained with Fast Green (20 mg/100 ml 90% ethanol), dehydrated with absolute alcohol, transferred to xylene, and mounted in Eukitt[®] resin (Sigma-Aldrich Co.). Measurements were made on rehydrated ethanol preserved material.

DNA extraction and sequencing of part of the 16S mitochondrial RNA gene were done as described in Schuchert (2005, 2014).

Museum acronym abbreviations:

MHNG Muséum d'histoire naturelle, Genève, Switzerland
 ZMUC Zoological Museum of the University of Copenhagen, Denmark (loan obtained in 2002)
 UZMO Zoological Museum of the University of Oslo, Norway

TAXONOMY

Order Leptothecata Cornelius, 1992
 Family Campanulinidae Hincks, 1868

Egmundella producta (G.O. Sars, 1874)

Figs 1A-D, 2A-C, 3A-F

Calycella producta G.O. Sars, 1874: 118, pl. 5 figs 6-8. – Hincks, 1874a: 134. – Verrill, 1879: 17. – Storm, 1879: 26. – Broch, 1907: 7.

Lovenella producta. – Segerstedt, 1889: 12. – Jäderholm, 1909: 79. – Kramp, 1935: 140, fig. 57E. – Fraser, 1937: 96, pl. 19 fig. 102. – Fraser, 1944: 175, pl. 31 fig 149. – Schuchert, 2000: 423. – Schuchert, 2001: 54, fig. 39. – Calder, 2012: 22, fig. 21.

Campanulina producta. – Bonnevie, 1899: 73. – Bonnevie, 1901:10. – Broch, 1903: table. – Stechow, 1922: 146. not *Lovenella producta*. – Fraser, 1911: 44, pl. 3 figs 7-10. – Fraser, 1914: 159, pl. 18 fig. 64. [in part *Egmondella gracilis* Stechow, 1921]

? *Lovenella producta*. – Fraser, 1938: 40.

? not *Campanulina producta*. – Leloup, 1940: 8, pl. 1 fig. 4.

? *Egmondella grimaldii* Leloup, 1940: 7, pl. 1 fig. 3.

? not *Opercularella producta*. – Vervoort, 1966: 111, fig. 12a. – Verwoort, 1985: 279.

Material examined:

Syntypes, UZMO B1378, Sars collection, as *Calycella producta*; Norway, Bodø and Lofoten, 80-100 f (=146-183); identified by G. O. Sars, numerous hydranths, relatively well preserved.

MHNG-INVE-91796; Norway, North of Litlesotra Island, 60.4083°N 05.1167°W, 100 m depth, on tube of *Sabella pannonia*; collected 22.04.2015; with 3 gonothecae; part of this material processed to permanent microslide preparations; DNA isolate 1097 made from a few hydranths, 16S sequence **KU512889**; DNA isolate 1098 made

from a gonotheca content, 16S sequence identical to KU512889.

MHNG-INVE-25136; Iceland, 64.842°N 24.217°W, 220 m depth, temperature 7.1°C; collection date 05.09.1990. ZMUC BIOFAR100; Faroe Islands, 61.5878°N 6.2847°W, 283 m depth, temperature 6.8°C; collected 24.07.1987; without gonothecae.

ZMUC BIOFAR165; Faroe Islands, 62.1844°N 4.9667°W, 184 m depth, temperature 7.9°C, on hydroids; collected 07.05.1988; without gonothecae.

ZMUC BIOFAR517; Faroe Islands, 60.6039°N 11.6364°W, 1099 m depth, temperature 5.6°C; collected 27.07.1989; without gonothecae.

ZMUC BIOFAR523; Faroe Islands, 60.7114°N 12.6075°W, 606 m depth, temperature 8.5°C, on polychaete tube made of sand grains; collected 28.07.1989; without gonothecae.

ZMUC BIOFAR524; Faroe Islands, 0.7364°N 12.6222°W, 702 m depth, temperature 7.9°C, on hydroid *Symplectoscyphus tricuspoidatus*; collected 28.07.1989; without gonothecae.

Description: Colony stolonal, stolons tubular, diameter 90-140 µm, irregularly corrugated, ramified, creeping, forming a reticulated network. Stolons usually bear on upper surface a row of widely spaced nematothecae,

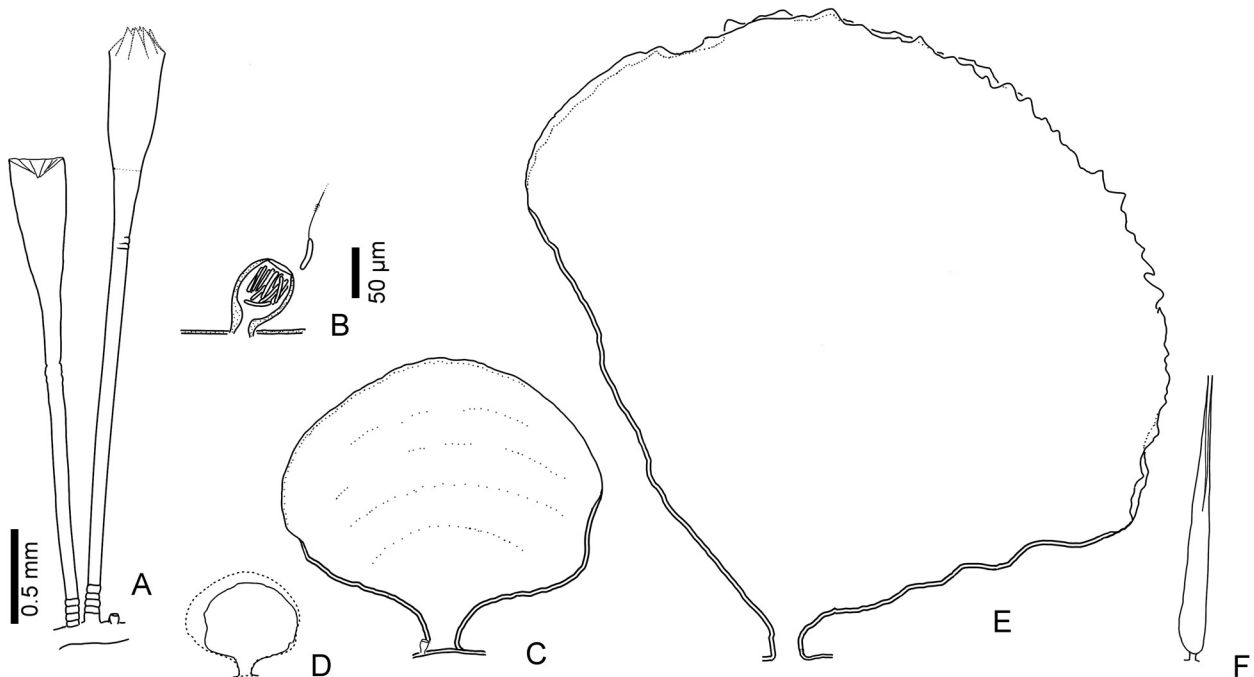


Fig. 1. *Egmondella producta* (G.O. Sars, 1874), line drawings of MHNG-INVE-91796, rehydrated alcohol material. (A) Two hydrothecae, left one with inverted operculum. (B) Nematotheca on stolon with bundle of large haplonemes. (C) Smallest gonotheca seen from broad side, same scale as A. (D) Shrinkage of the gonotheca shown in C, dotted line shows its outline after alcohol fixation, solid line after staining and embedding for a permanent microscopic slide preparation. (E) Largest of the three gonothecae seen from broad side, same scale as A. (F) Gonotheca shown in E seen from narrow side, not the same scale as E.

number variable between colonies, nematothecae about 60-100 μm high, on short pedicels, bodies egg-shaped, distally truncate, lumen filled with large haplonemes (Fig. 1B). The hydrothecae are not evenly distributed and tend to arise in clusters of 3-6, total height of hydrotheca and pedicel very variable 3-6 mm (Fig. 1A), diameters of pedicels 80-90 μm . Pedicels straight, smooth for the most part but regularly some short, annulated stretches present, this especially at base. Hydrotheca elongate, height 0.5-0.8 mm from diaphragm to operculum tip, walls thin, widest at base of operculum (diameter 0.28-0.32 mm), tapering

towards below, and basally merging imperceptibly into pedicel, with no node at base of hydrotheca. Operculum low, conical, formed by about 10-12 triangular flaps. In fresh and alcohol preserved material, the operculum is not delimited from the hydrothecal wall by a crease line. A crease line can appear when the operculum is inwardly folded into the hydrotheca (Fig. 1A). Towards base of hydrotheca a very fine, membranous, funnel-shaped diaphragm, which is only discernible while there is a living polyp in the hydrotheca.

Gonothecae arise directly from stolons (Fig. 1C, E), fan-shaped, strongly flattened (Fig. 1F), the thickness of the

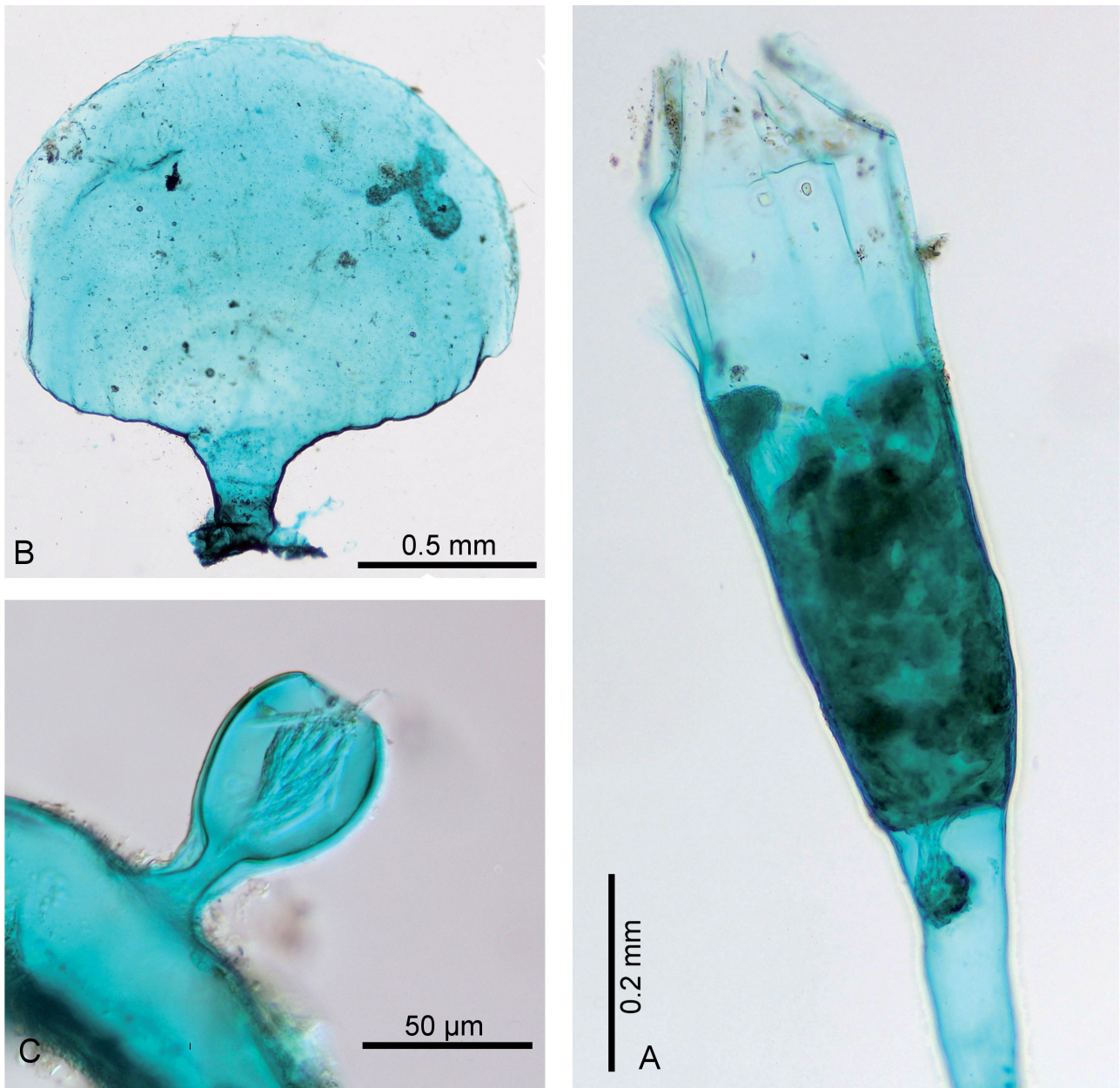


Fig. 2. *Egmondella producta* (G.O. Sars, 1874), photomicrograph of permanent slide preparation MHNG-INVE-91796. (A) Hydrotheca, note that the crease line delimiting the operculum at its base is a preparation artefact which appeared during the slide preparation. (B) Gonotheca. (C) Nematotheca.

gonotheca in the proximal part is about 1/8 to 1/10 of the height, thinning out towards the periphery, with a large opening spanning from one side to the other (Fig. 1E-F), margin of opening irregularly serrated, possibly resulting from rupture of perisarc at maturity, lower walls of gonotheca undulated, pedicel short. Size of gonotheca variable, observed range (n=3, newly collected material) was 1.5 x 1.7 mm to 4.4 x 4.6 mm (height x maximal width). Only largest gonotheca contained soft tissue, represented by a very young and an advanced gonophore, gonophore a medusoid or a medusa.

Nematocysts:

- large merotrichous and atrichous haplonemes (Fig. 3A-B, E-F), concentrated in nematothecae but also present in hydranths, stolons and gonophores, (31-35) x (3.5-4) μm , straight or curved, thread of discharged capsules thin, tapering inconspicuously, some capsules without barbs (Fig. 3F), some with a stretch of about 30 μm beset with strong barbs, about 40 μm away from capsule (Fig. 3E).
- spindle shaped isorhizas (Fig. 3C), concentrated in tentacles, but also elsewhere, (7.5-9) x (1.5-2) μm , in light microscopy lacking visible spines.
- rare, small, unidentifiable capsules (Fig. 3D), (4-5) x (1-1.5) μm , may be developmental stages.

Biology: Grows on a variety of substrates like other hydroids (especially *Tubularia indivisa*), tubes of polychaetes, and ascidians. Depth range of reliably-identified material 6-750 m, usually below 80 m in boreal regions.

Distribution: In cool temperate to cold waters of the North Atlantic, rarely reported from the high Arctic: Norway (Sars, 1874; Storm, 1879; Bonnevie, 1899, 1901), Sweden (Segerstedt, 1889), Denmark (Kramp, 1935), North Sea (Broch, 1903), Iceland (Schuchert, 2000, 2001), North-western Atlantic (Verrill, 1879; Fraser, 1944).

The identities of records from deep waters of the Gulf of Gascogne and the Azores (Leloup, 1940; Vervoort, 1985) are uncertain.

Not reported so far from the Russian Arctic Sea (Antsulevich, 2015) or other high arctic waters (Ronowicz *et al.*, 2015), except for one record by Broch (1907) from the Jones Sound (south of Ellesmere Island, Canada). Type localities: Norway, Nordland county, Bodø and Lofoten Islands, 146-366 m depth, on *Tubularia indivisa* and a serpulid tube.

Remarks: The presence or absence of nematothecae in campanulinid hydroids is usually considered to be a genus level difference (Levinsen, 1893; Jäderholm, 1909; Stechow, 1921; Bouillon *et al.*, 2006). The genus *Lovenella* Hincks, 1868 has as type species *Campanularia clausa* Lovén, 1836 by monotypy, a species with no stolonematothecae.

Contemporary authors (e. g. Cornelius, 1995a; Schuchert,

2001; Calder, 2012) did nevertheless not apply this and continued to use the combination *Lovenella producta* (G.O. Sars, 1874), despite the fact that nematothecae were always found. The reason for doing so was because the species remained incompletely described and it was assumed that the type material does not have stolonematothecae as these were not mentioned by Sars (1874). However, the re-examination of the syntypes showed that stolonematothecae are present in both of them. According to Bouillon *et al.* (2006) – currently the most comprehensive and widely accepted taxonomic system of the Hydrozoa – the species must thus be placed in the genus *Egmundella* Stechow, 1921 (Stechow, 1921: 225; type species *Egmundella gracilis* Stechow, 1921 by original designation).

A comparison with the syntype specimens made it evident that the new material from Norway is indistinguishable from them, the hydrothecae being only slightly shorter. The syntype material, as already stated by Sars (1874), is composed of specimens from at least two localities (Bodø and Lofoten Islands), each attached to a different substrate (*Tubularia indivisa* stem fragments and a serpulid tube fragment, respectively). The material is relatively well preserved, though most hydrothecae are damaged. The stolons bear numerous nematothecae, although their local density is variable. Since they were not mentioned by Sars (1874), it is assumed that he must have overlooked them. Considering the quality of the optical instruments available at his time, this is not surprising, as they are inconspicuous structures that need a careful examination to be discovered.

Sars (1874) stated that the type material had no gonothecae. However, I found one small (1 mm), developing gonotheca on the colony growing on the serpulid tube. The gonotheca is comparatively smaller, but otherwise morphologically similar to those observed in the new material (Fig. 1C, 2C). The gonotheca in the type material seems to be a younger stage than the one depicted in Fig. 1C and apparently there is no opening yet. There is a visible gonophore inside it, but no internal structures could be identified.

Unfortunately, the content of the gonotheca in the new material could not be identified with sufficient precision. The material had to be preserved immediately because the tissues started to deteriorate due to damage suffered during the collecting process. Only the largest gonotheca contained soft tissue, represented by one advanced gonophore and a very young one. The gonophore was provisionally identified as a medusoid with developed gonads, but it is not excluded that it could further develop into a medusa with tentacles. New observations based on living colonies are needed.

The shape of the gonothecae observed in the material of the present study matches only partially Storm's (1879) description. Storm mentions a short aperture, while in the present material there is a wide distal opening. Without any illustration of Storm's material it is difficult

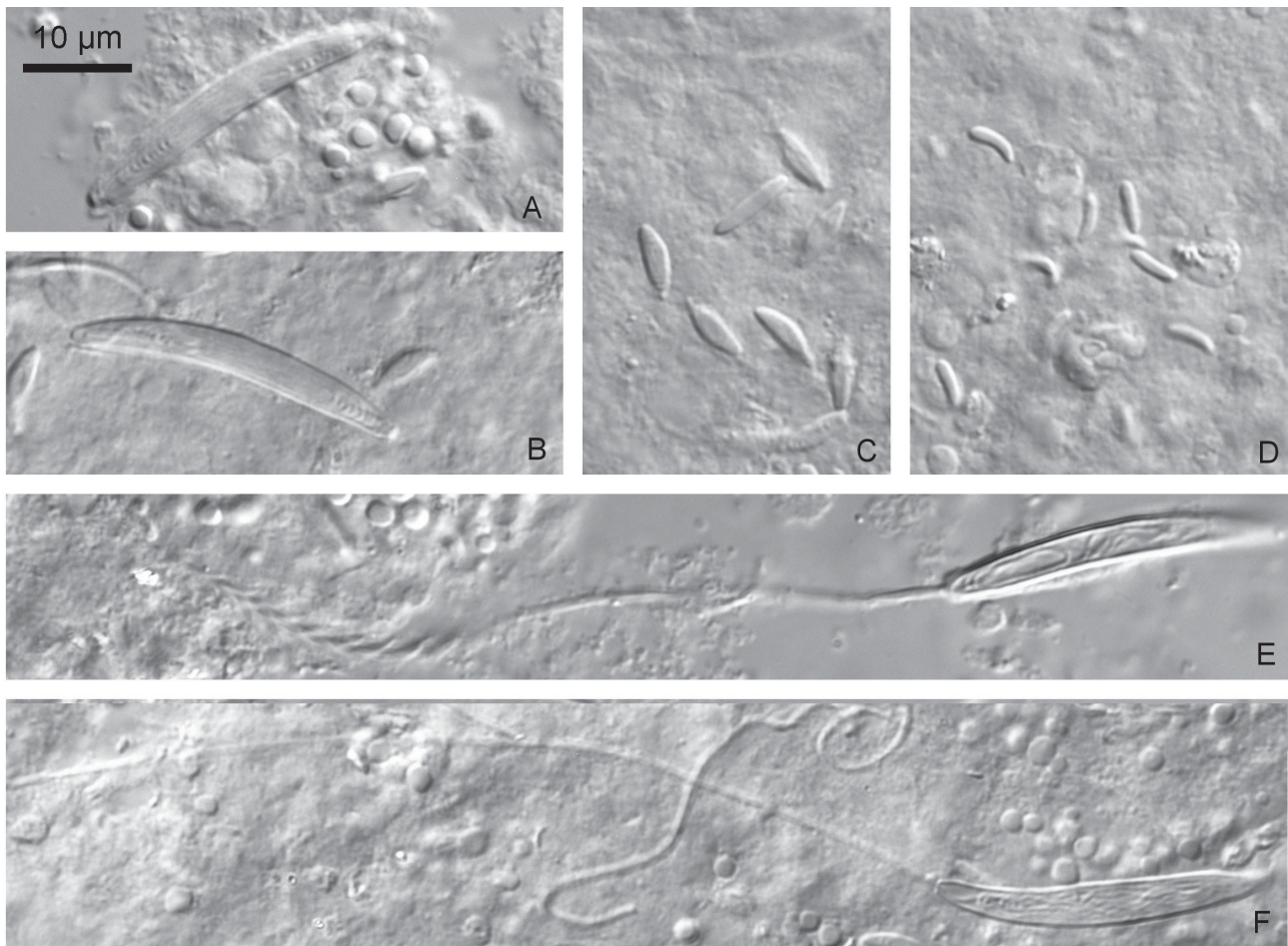


Fig. 3. Nematocysts of *Egmundella producta* (G.O. Sars, 1874), alcohol preserved material in 50% lactic acid, same scale for all images. (A-B) Undischarged large haplonemes. (C) Undischarged isorhiza capsules. (D) Unidentified small capsules. (E) Discharged large haploneme with barbs on thread. (F) Discharged large haploneme without apparent barbs on thread.

to assess its validity and significance. Also Vervoort (1985, as Verwoort) described gonothecae in material he tentatively identified as *L. producta*: "... hyaline, sac-shaped body, about as long as the hydrothecal pedicel and attached to the stolon by means of a very short collar-shaped pedicel. The lateral wall is slightly wrinkled; terminally it is open, with a slightly folded apical portion ...". Also this description does not match well the gonothecae found here, notably there is no mention of the gonothecae being flattened. Vervoort's material from deep waters of the Bay of Biscay originated from beyond the southern limit of the distribution of *E. producta* and it lacked nematothecae. I therefore think that Vervoort's hydroid was not *E. producta*, an opinion likely shared by Vervoort himself, because he added a question mark in front of the binomen.

Egmundella grimaldii Leloup, 1940, from deep waters of the Bay of Biscay, is rather similar to *E. producta*, but has very short hydranth pedicels. More material from this region is also needed to evaluate if it not just a mere growth variant of *E. producta*.

The reliability of the records of *E. producta* from the Pacific is also difficult to evaluate, and this is not only due to the infertile state of the known specimens. Fraser (1911, 1914) described *L. producta* colonies from British Columbia, but later Stechow (1921) re-examined part of this material and found nematothecae. Stechow attributed these samples with nematothecae to a new species, *Egmundella gracilis* Stechow, 1921. The colonies lacking nematothecae were left in *L. producta*. The NE Pacific *E. gracilis* differs from the Atlantic *E. producta* by the presence of nematothecae on the hydranth pedicels, a situation never met with in the latter species. I think that reproductive colonies of *E. gracilis* and *L. producta* sensu Fraser must be re-sampled in the Vancouver Island region before a reliable conclusion on their status can be made. In this context, also *Oplorhiza diaphragmata* Naumov, 1960 needs a re-evaluation. Although *O. diaphragmata* has been allocated to a different genus, I suspect that it is conspecific with *E. gracilis*.

There are about 12 species of either *Egmundella* Stechow, 1921 or *Oplorhiza* Allman, 1877 (Bouillon *et al.*, 2006),

two genera which are hardly separable and it is a matter of personal opinion whether they should be kept distinct or not. For more details on how to distinguish these two genera and also other similar ones see Bouillon *et al.* (2006). For these 12 species of *Egmundella* or *Oplorhiza*, gonothecae are only known for *Egmundella humilis* Fraser, 1936, *E. polynema* Fraser, 1948, *E. sibogae* Billard, 1940, and *Oplorhiza diaphragmata* Naumov, 1960 (see Hirohito, 1995; Fraser, 1948; Billard, 1940; Naumov, 1969, respectively). The Japanese *E. humilis* produces a free medusa, but the adult is unknown. *Egmundella sibogae* is supposed to produce either a medusoid or a medusa. The gonothecae of both these species are more or less cylindrical and thus very unlike the ones observed for *E. producta*. The gonothecae of *O. diaphragmata* are shaped like high, narrow, inverted cones. These three species have thus gonothecae forms which are quite different from *E. producta* and they are certainly separate species.

Although I advocate here for a genus change to *Egmundella producta*, this may nevertheless be only a temporary solution. Molecular phylogenies will almost certainly make it necessary to revise the scope of many genera of the Campanulinidae (comp. Leclère *et al.*, 2009). In this context, not too much energy should therefore be wasted in discussions on the generic limits and subdivisions of the Campanulinidae based on morphological traits with very low complexity and high variability.

Much emphasis has been placed by some authors (e.g. Stechow, 1922; Miranda *et al.*, 2013) on the presence of a crease line delimiting the operculum from the hydrotheca wall. In the present material of *E. producta*, no such crease line could be found in intact hydrothecae of living material or material kept in liquid fixative (including the type specimens). A crease line becomes visible once the operculum is tucked inside the hydrotheca (due to collecting process?), or it appeared after the material had been dehydrated for permanent microslide preparations [see also Cornelius (1995a: 168) for similar observations]. Thus, the presence of crease lines may, in some cases, be a mere preparation artefact. This should not be taken as a general invalidation of this character, but a cautionary note when using permanent slide preparations only. Some species, e. g. *Calycella syringa* (Linnaeus, 1767) or *Tetrapoma quadridentatum* (Hincks, 1874b) (see Schuchert, 2001 for descriptions), always have a distinct crease line delimiting the operculum base. In these cases, it is a stable and important taxonomic character that may not be neglected.

More generally, shrinkage artefacts in slide preparations can be quite dramatic as was observed for the gonothecae in the present material. The dimensions of the single gonotheca processed into a permanent slide preparation shrunk about 10-19%. Shrinkage was unequal for different regions and appeared most pronounced where the perisarc is very thin, but limited in the basal regions with comparatively thicker perisarc (Fig. 1D). Shrinkage takes certainly always place to some degree in all permanent

microslide preparations and this compromises, to some extent, the precision and comparability of measurements.

ACKNOWLEDGMENTS

I wish to thank Åse Ingvild Wilhelmsen (UZMO) and Ole Tendal (ZMUC) for their help and generous loans of material. Likewise, I am indebted to Tomas Sørli (Espesgrend marine station, Bergen) who helped to collect the material.

REFERENCES

- Allman G.J. 1877. Report on the Hydrozoa collected during the Exploration of the Gulf Stream by L. F. de Pourtalès, Assistant United States Coast Survey. *Memoirs of the Museum of Comparative Zoology* 5(2): 1-66, pls 1-34.
- Antsulevich A.E. 2015. Hydrozoa (Hydroids and Hydromedusae) of Russian sea [in Russian]. *St. Petersburg University Press, St. Petersburg*. 860 pp.
- Billard A. 1940. Note sur une espèce nouvelle d'hydroïde: *Egmundella sibogae* (Campanulinidae). *Bulletin de la Société Zoologique de France* 65: 134-135.
- Bonnevie K. 1899. Hydrozoa. *Norske Nordhavs-Expedition 1876-1878, Zoologi* 26: 1-104, pls 1-8, map.
- Bonnevie K. 1901. Hydroïden. *Die Meeresfauna von Bergen* 1: 1-15.
- Bouillon J., Gravili C., Pages F., Gili J.M., Boero F. 2006. An introduction to Hydrozoa. *Mémoires du Muséum national d'Histoire naturelle* 194: 1-591.
- Broch H. 1903. Die vom norwegischen Fischereidampfer „Michael Sars“ in den Jahren 1900-1902 in dem Nordmeer gesammelten Hydroïden. *Bergens Museum Aarbog* (1903) 9(3): 1-14, pls 1-4, table.
- Broch H. 1907. Hydroïden und Medusen. *Report of the Second Norwegian Arctic expedition in the "Fram" 1898-1902*, vol. 2(12), pp. 1-12. *Brøgger, Kristiania*. dx.doi.org/10.5962/bhl.title.55607
- Calder D.R. 2012. On a collection of hydroids (Cnidaria, Hydrozoa, Hydroïdolina) from the west coast of Sweden, with a checklist of species from the region. *Zootaxa* 3171: 1-77.
- Cornelius P.F.S. 1992. Medusa loss in leptolid Hydrozoa (Cnidaria), hydroid rafting, and abbreviated life-cycles among their remote-island faunas: an interim review. *Scientia Marina* 56(2-3): 245-261.
- Cornelius P.F.S. 1995a. North-west European thecate hydroids and their medusae. Part 1. Introduction, Laodiceidae to Haleciidae. *Synopses of the British Fauna, New Series* 50(1): 1-347.
- Cornelius P.F.S. 1995b. North-west European thecate hydroids and their medusae. Part 2. Sertulariidae to Campanulariidae. *Synopses of the British Fauna, New Series* 50(2): 1-386.
- Fraser C.M. 1911. The hydroids of the west coast of North America. With special reference to those of the Vancouver Island region. *Bulletin from the Laboratories of Natural History of the State University of Iowa* 6(3): 3-91, pls 1-8.
- Fraser C.M. 1914. Some hydroids of the Vancouver Island region. *Transactions of the Royal Society of Canada, 3rd series, section 4* 8: 99-216.
- Fraser C.M. 1936. Some Japanese hydroids, mostly new. II.

- Proceedings and transactions of the Royal Society of Canada* (3)30 sect. 2: 49-54, pls 1-2.
- Fraser C.M. 1937. Hydroids of the Pacific coast of Canada and the United States. *The University of Toronto Press, Toronto*, 208 pp., pls 1-44.
- Fraser C.M. 1938. Hydroids of the 1934 Allan Hancock Pacific Expedition. *Allan Hancock Pacific Expeditions* 4(1): 1-105.
- Fraser C.M. 1944. Hydroids of the Atlantic coast of North America. *The University of Toronto Press, Toronto*, pp. 1-451, pls 1-94.
- Fraser C.M. 1948. Hydroids of the Allan Hancock Pacific Expeditions since March, 1938. *Allan Hancock Pacific Expeditions* 4(5): 179-343.
- Hincks T. 1868. A history of the British hydroid zoophytes. *John van Voorst, London*, pp. Volume 1: i-lxvii + 1-338, volume 2, pls 1-67.
- Hincks T. 1874a. Notes on Norwegian Hydroida from deep water. *Annals and Magazine of Natural History* (4)13: 125-137.
- Hincks T. 1874b. On deep-water Hydroida from Iceland. *Annals and Magazine of Natural History* (4)13: 146-153, pls 6-8.
- Hirohito Emperor of Japan 1995. The hydroids of Sagami Bay II. Thecata. *Biological Laboratory of the Imperial Household, Tokyo*, 354 pp., 13 pls.
- Jäderholm E. 1909. Northern and arctic invertebrates in the collection of the Swedish state museum (Riksmuseum). IV Hydroiden. *Bihang till Kungliga Svenska Vetenskaps-akademiens Handlingar* 45: 1-124, 12 pls.
- Kramp P.L. 1935. Polypdyr (Coelenterata) I. Ferskvandspolyp- per og Goplepolypper. *Danmarks Fauna* 41: 1-207.
- Leclère L., Schuchert P., Cruaud C., Couloux A., Manuel M. 2009. Molecular phylogenetics of Thecata (Hydrozoa, Cnidaria) reveals long-term maintenance of life history traits despite high frequency of recent character changes. *Systematic Biology* 58(5): 509-526.
- Leloup E. 1940. Hydropolypes provenant des croisières du Prince Albert I^{er} de Monaco. *Résultats des Campagnes Scientifiques Accomplies sur son Yacht par Albert I^{er}, Prince Souverain de Monaco* 104: 1-38.
- Levinsen G.M.R. 1893. Meduser, Ctenophorer og Hydroider fra Grønlands Vestkyst, tilligemed Bemaerkninger om Hydroidernes Systematik. *Videnskabelige meddelelser fra den Naturhistoriske forening i Kjöbenhavn* 4: 143-212, 215-220, appendix, plates 5-8.
- Linnaeus C. 1767. Systema naturae per regna tria naturae, secundum classes, ordines, genera, species cum characteribus, differentiis, synonymis, locis. Editio duodecima, reformata, *Holmiae*, pp. 533-1328.
- Lovén S.L. 1836. Bidrag till kännedomen af släktena *Campanularia* och *Syncoryna*. *Konglige Svenska Vetenskaps Akademiens Handlingar* 1835: 260-281, pls 6-8.
- Miranda T.P., Cunha A.F., Marques A.C. 2013. Taxonomic position of *Lovenella gracilis* Clarke, 1882 (Lovenellidae, Hydrozoa): new evidences of microanatomy justify its maintenance in the genus *Lovenella* Hincks, 1868. *Latin American Journal of Aquatic Research* 41(2): 286-295.
- Naumov D.V. 1960. Gidroidi i gidromeduzy morskikh, solonov- vatovodnykh i presnovodnykh basseinov SSSR. *Opre- deleteli po faune SSSR, Izdavaemye Zoologicheskim Institutom Akademii Nauk SSSR* 70: 1-626 [consulted translation: Naumov D.V. 1969. Hydroids and Hydro- medusae of the USSR. *Israel Program for scientific translation, Jerusalem*, 463 pp., 30 pls].
- Ronowicz M., Kukliński P., Mapstone G.M. 2015. Trends in the Diversity, Distribution and Life History Strategy of Arctic Hydrozoa (Cnidaria). *PLoS ONE* 10(3): e0120204. doi:10.1371/journal.pone.0120204
- Sars G.O. 1874. Bidrag til Kundskaben om Norges Hydroider. *Forhandlinger i Videnskabs-Selskabet i Kristiana* 1873: 91-150, pls 2-5.
- Schuchert P. 2000. Hydrozoa (Cnidaria) of Iceland collected by the BIOICE programme. *Sarsia* 85(5-6): 411-438.
- Schuchert P. 2001. Hydroids of Greenland and Iceland (Cnidaria, Hydrozoa). *Meddelelser om Grønland, Bio- science* 53: 1-184.
- Schuchert P. 2005. Species boundaries in the hydrozoan genus *Coryne*. *Molecular Phylogenetics and Evolution* 36: 194-199.
- Schuchert P. 2012. North-West European Athecate Hydroids and their Medusae. Synopses of the British Fauna (New Series) 59. *The Linnean Society of London, London*. pp. i-viii, 1-364.
- Schuchert P. 2014. High genetic diversity in the hydroid *Plumularia setacea*: A multitude of cryptic species or extensive population subdivision? *Molecular Phylogenetics and Evolution* 76(0): 1-9. doi:10.1016/j.ympev.2014.02.020
- Segerstedt M. 1889. Bidrag till Kännedomen om Hydroid- Faunan vif Sveriges Vestkust. *Bihang till Kungliga Svenska Vetenskaps-akademiens Handlingar* 14(4): 1-28, plate.
- Stechow E. 1921. Über Hydroiden der Deutschen Tiefsee- Expedition, nebst Bemerkungen über einige andre Formen. *Zoologischer Anzeiger* 53(9-10): 223-236.
- Stechow E. 1922. Zur Systematik der Hydrozoen, Stro- matoporen, Siphonophoren, Anthozoen und Ctenophoren. *Archiv für Naturgeschichte* 88(3): 141-155.
- Storm V. 1879. Bidrag til Kundskab om Thronhjemsfjordens Fauna. *Det Kongelige Norske videnskabers selskabs skrifter* 1878: 9-36.
- Verrill A.E. 1879. Preliminary check-list of the marine invertebrata of the Atlantic coast, from Cape Cod to the Gulf of St. Lawrence. *Tuttle, Morehouse & Taylor, New Haven*, 32 pp.
- Vervoort W. 1966. Bathyal and abyssal hydroids. *Galathea Report* 8: 97-173.
- Vervoort [Vervoort] W. 1985. Deep-water hydroids. Pp. 267-297. In: Laubier L., Monniot C. (Eds), *Peuplements profonds du golfe de Gascogne: Campagnes BIOGAS. Ifremer, Brest*, pp. 1-629.