

Map

Source: A Rapid Biological Assessment of the Atewa Range Forest Reserve, Eastern Ghana: 31

Published By: Conservation International

URL: <https://doi.org/10.1896/054.047.0105>

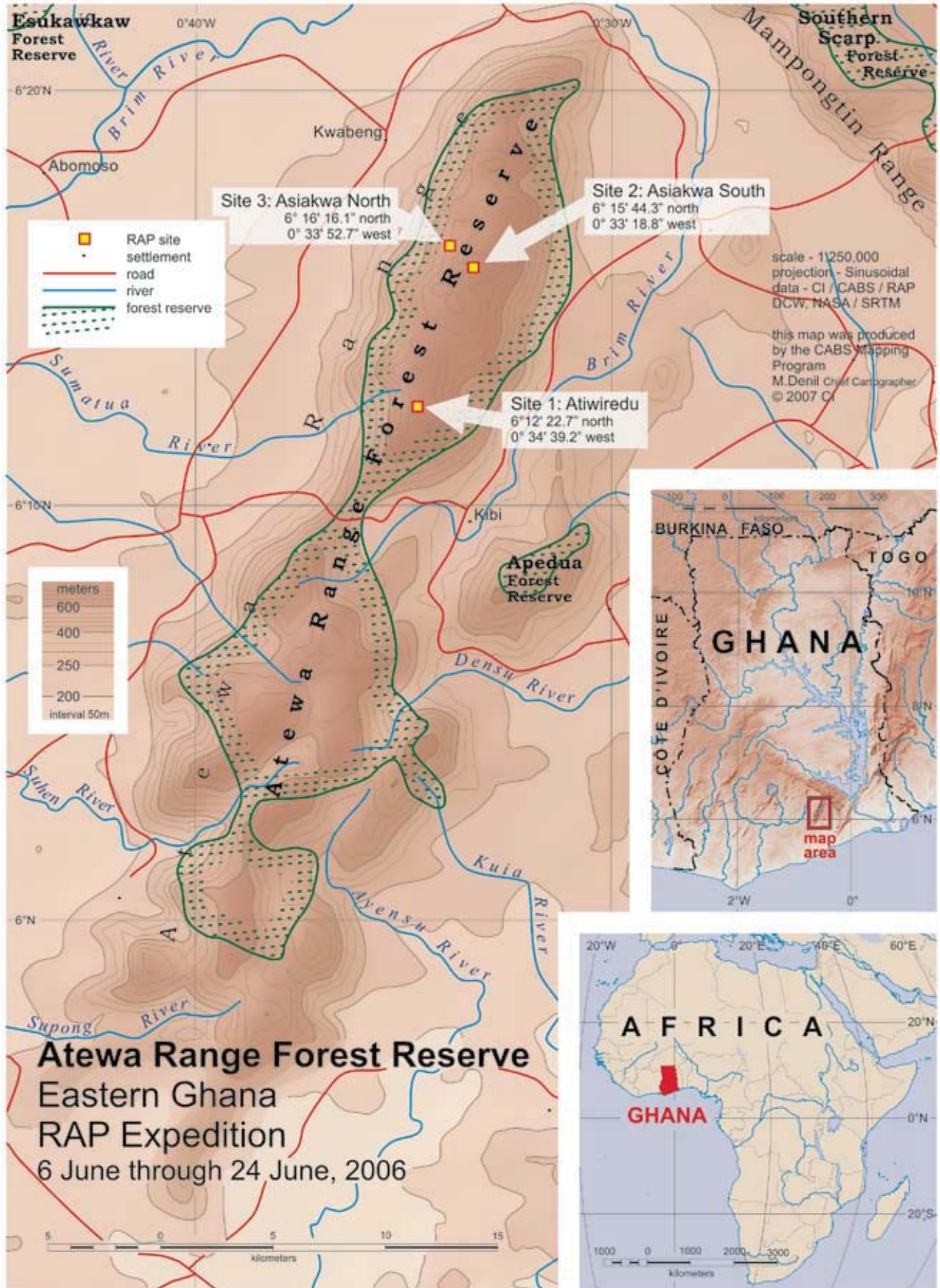
The BioOne Digital Library (<https://bioone.org/>) provides worldwide distribution for more than 580 journals and eBooks from BioOne's community of over 150 nonprofit societies, research institutions, and university presses in the biological, ecological, and environmental sciences. The BioOne Digital Library encompasses the flagship aggregation BioOne Complete (<https://bioone.org/subscribe>), the BioOne Complete Archive (<https://bioone.org/archive>), and the BioOne eBooks program offerings ESA eBook Collection (<https://bioone.org/esa-ebooks>) and CSIRO Publishing BioSelect Collection (<https://bioone.org/csiro-ebooks>).

Your use of this PDF, the BioOne Digital Library, and all posted and associated content indicates your acceptance of BioOne's Terms of Use, available at www.bioone.org/terms-of-use.

Usage of BioOne Digital Library content is strictly limited to personal, educational, and non-commercial use. Commercial inquiries or rights and permissions requests should be directed to the individual publisher as copyright holder.

BioOne is an innovative nonprofit that sees sustainable scholarly publishing as an inherently collaborative enterprise connecting authors, nonprofit publishers, academic institutions, research libraries, and research funders in the common goal of maximizing access to critical research.

Map



Photos from the Atewa RAP Survey

All photos taken by [redacted] except where noted)



Butterfly (*Kallimoides rumia*)



A new species of tick spider (*Ricinoides* sp. n.)



Tadpoles of the clawed frog (*Silvarana tropicalis*)



A female of *Orthetrum julia* (the Julia Skimmer), one of Africa's most common dragonfly species



Green tree viper (*Atheris chlorechis*)



Atewa tree fern (*Cyathea manniana*)



Rhinoceros viper (*Bitis nasicornis*)



A new species of katydid (*Tetraconcha* sp. n.)



Szabolcs Sáfrián

Mudpuddling male of the Atewa Dotted Border, *Mylothris atewa*, a narrowly endemic species that occurs only in the upland rainforest of the Atewa Range



A driver ant (*Dorylus* sp.) attacking a termite



A stream of driver ants (*Dorylus* sp.)



Hyperolius bobirensis is known only from two other Ghanaian sites. Characteristics are its large size and the granular back skin.



RAP scientist Natalie Weber with a bat (*Hipposideros gigas*)



Tree frogs in amplexus (*Chiromantis rufescens*)



Decayed leaf katydid (*Weissenbornia praestantissima*)



Leaf katydid (*Poreuomena lamottei*)



The Atewa RAP team



The aquatic *Conraua derooi* is Critically Endangered and may have its largest populations in the Atewa Range Forest Reserve