



Map and Photos

Source: A Rapid Marine Biodiversity Assessment of the Northeastern Lagoon from Touho to Ponérihouen, Province Nord, New Caledonia: 121

Published By: Conservation International

URL: <https://doi.org/10.1896/054.062.0115>

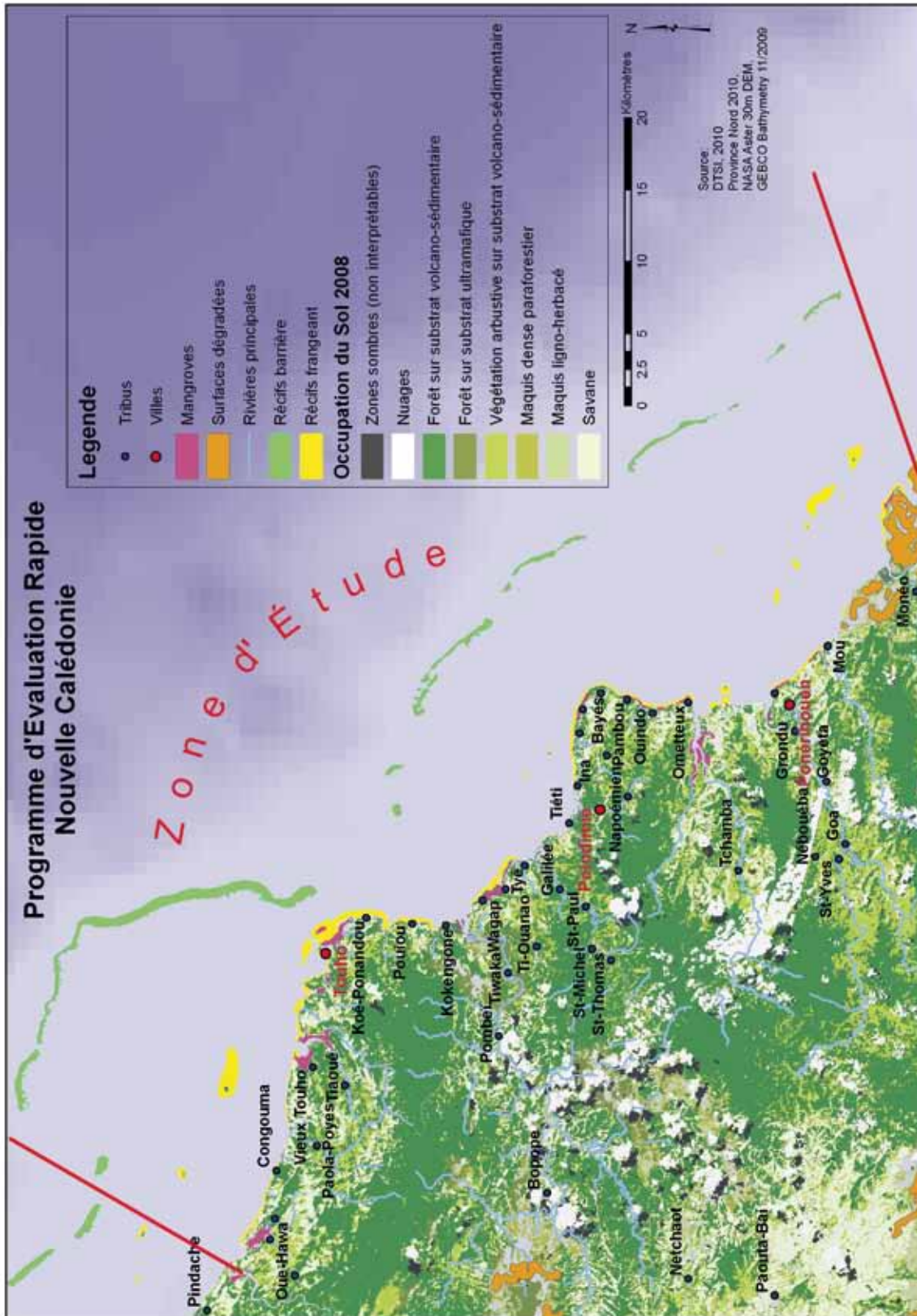
BioOne Complete (complete.BioOne.org) is a full-text database of 200 subscribed and open-access titles in the biological, ecological, and environmental sciences published by nonprofit societies, associations, museums, institutions, and presses.

Your use of this PDF, the BioOne Complete website, and all posted and associated content indicates your acceptance of BioOne's Terms of Use, available at www.bioone.org/terms-of-use.

Usage of BioOne Complete content is strictly limited to personal, educational, and non - commercial use. Commercial inquiries or rights and permissions requests should be directed to the individual publisher as copyright holder.

BioOne sees sustainable scholarly publishing as an inherently collaborative enterprise connecting authors, nonprofit publishers, academic institutions, research libraries, and research funders in the common goal of maximizing access to critical research.

Carte et Photos / Map and Photos





Acropora sp., Corail dur. Hard coral. Photo : P. Laboute



Acropora sp., Corail dur. Hard coral. Photo : S. van Dijken



Amphiprion peridraion, Poisson clown. Clownfish. Photo : P. LaBoute



Mollusc. Photo : S. van Dijken



Transect benthiques sur le récif. Reef transect. Photo : S. van Dijken



Corail dur. Hard coral. Photo : S. van Dijken



Manta birostris, raie manta. Manta ray. Photo : S. van Dijken



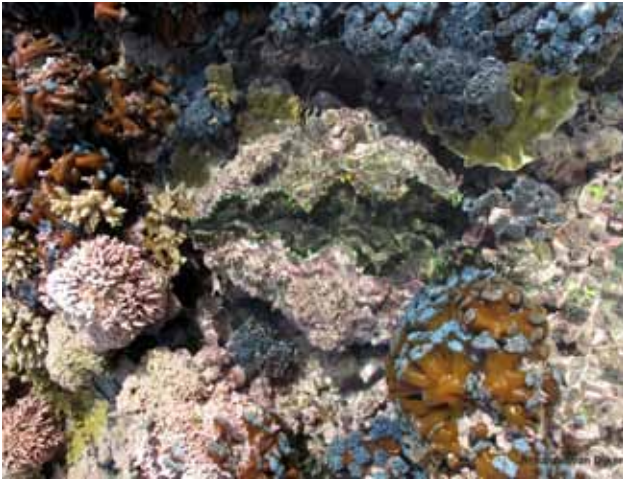
Galaxea sp. Photo: S. van Dijken



Acropora sp. Photo : S. van Dijken



Halicoeres richmondi, Poisson labre, Wrasse. Richmond's Wrasse. Photo : P. Laboute



Bénitier avec coraux Clam with coral. Photo : S. van Dijken



Siphonogorgia sp., Corail mou. Soft coral. Photo : P. Laboute



Montipora sp., Corail dur. Hard coral. Photo : P. Laboute



Platygyra daedalea, Corail dur. Hard coral. Photo : S. van Dijken



Récif. Reef. Photo : S. van Dijken