

Map and Photos

Source: A Rapid Biological Assessment of three sites in the Mountains of Southwest China Hotspot, Ganzi Prefecture, Sichuan Province, China: 72

Published By: Conservation International

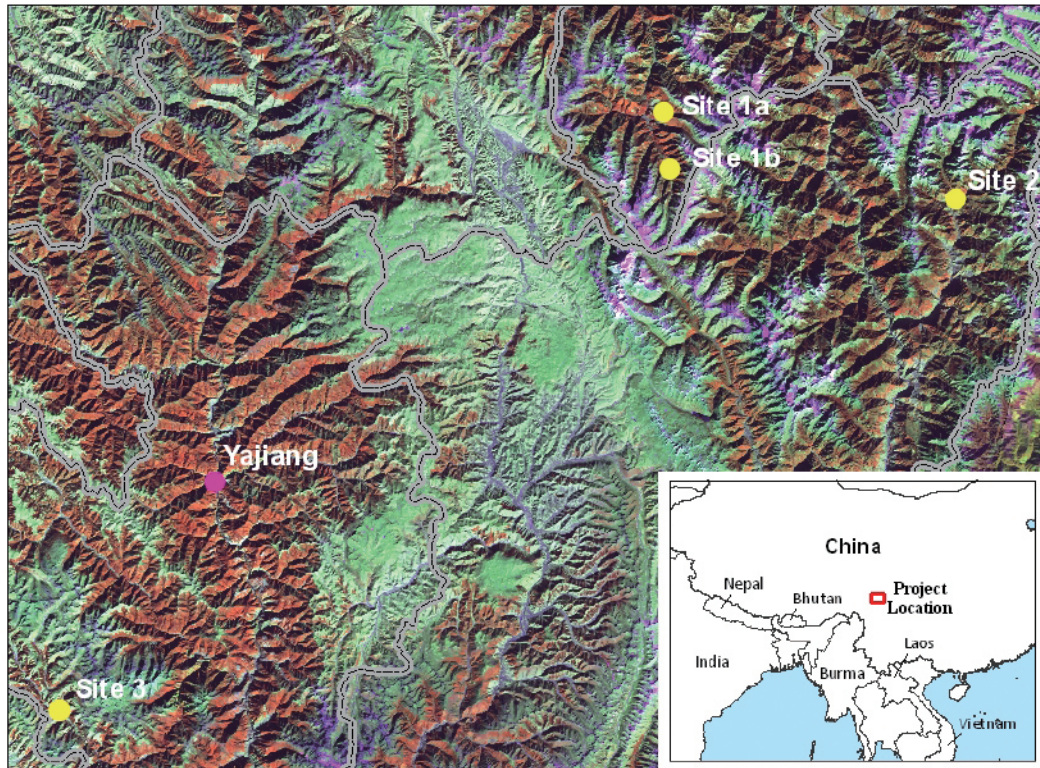
URL: <https://doi.org/10.1896/054.052.0120>

The BioOne Digital Library (<https://bioone.org/>) provides worldwide distribution for more than 580 journals and eBooks from BioOne's community of over 150 nonprofit societies, research institutions, and university presses in the biological, ecological, and environmental sciences. The BioOne Digital Library encompasses the flagship aggregation BioOne Complete (<https://bioone.org/subscribe>), the BioOne Complete Archive (<https://bioone.org/archive>), and the BioOne eBooks program offerings ESA eBook Collection (<https://bioone.org/esa-ebooks>) and CSIRO Publishing BioSelect Collection (<https://bioone.org/csiro-ebooks>).

Your use of this PDF, the BioOne Digital Library, and all posted and associated content indicates your acceptance of BioOne's Terms of Use, available at www.bioone.org/terms-of-use.

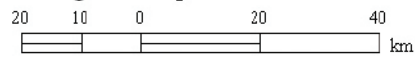
Usage of BioOne Digital Library content is strictly limited to personal, educational, and non-commercial use. Commercial inquiries or rights and permissions requests should be directed to the individual publisher as copyright holder

BioOne is an innovative nonprofit that sees sustainable scholarly publishing as an inherently collaborative enterprise connecting authors, nonprofit publishers, academic institutions, research libraries, and research funders in the common goal of maximizing access to critical research.



**Mountains of Southwest China
RAP Expedition**

22 August - 9 September 2005



projection: UTM, Zone 47N

imagery data source:

Landsat 7 p131r039_20020106 and p130r039_19991209

- RAP site
- County seat
- County boundary



Alpine musk deer
(*Moschus sifanicus*)
captured by camera-trap



Amolops sp.
(taxonomic status needs
further confirmation)
Photo: Piotr Naskrecki



Alpine stream salamander
(*Batrachuperus tibetanus*)
Photo: Piotr Naskrecki



Plumbeous water redstart
(*Rhyacornis fuliginosus*)
captured by mist net
Photo: Leeanne Alonso



Tettigonia chinensis
Photo: Piotr Naskrecki



Upper-labial grooved-neck keelback
(*Rhabdophis pentasupralabialis*)
Photo: Piotr Naskrecki



Aphaenogaster ant attacking another ant species
Photo: Piotr Naskrecki



RAP group photo (part of the participants)
Photo: Piotr Naskrecki



Survey site 1 Dingguoshan monastery
Photo: Shen Xiaoli



RAP scientists training reserve staff on
birding
photo: Leeanne Alonso



Discussing sampling protocol for small
mammals
Photo: Leeanne Alonso



Tibetan girls at Decha village
Photo: Piotr Naskrecki