



Cultural Survey of the Nakauvadra Range, Ra Province, Fiji

Authors: Matararaba, Sepeti, and Nakoro, Elia

Source: A Rapid Biodiversity Assessment of the Nakauvadra Range, Ra Province, Fiji: 92

Published By: Conservation International

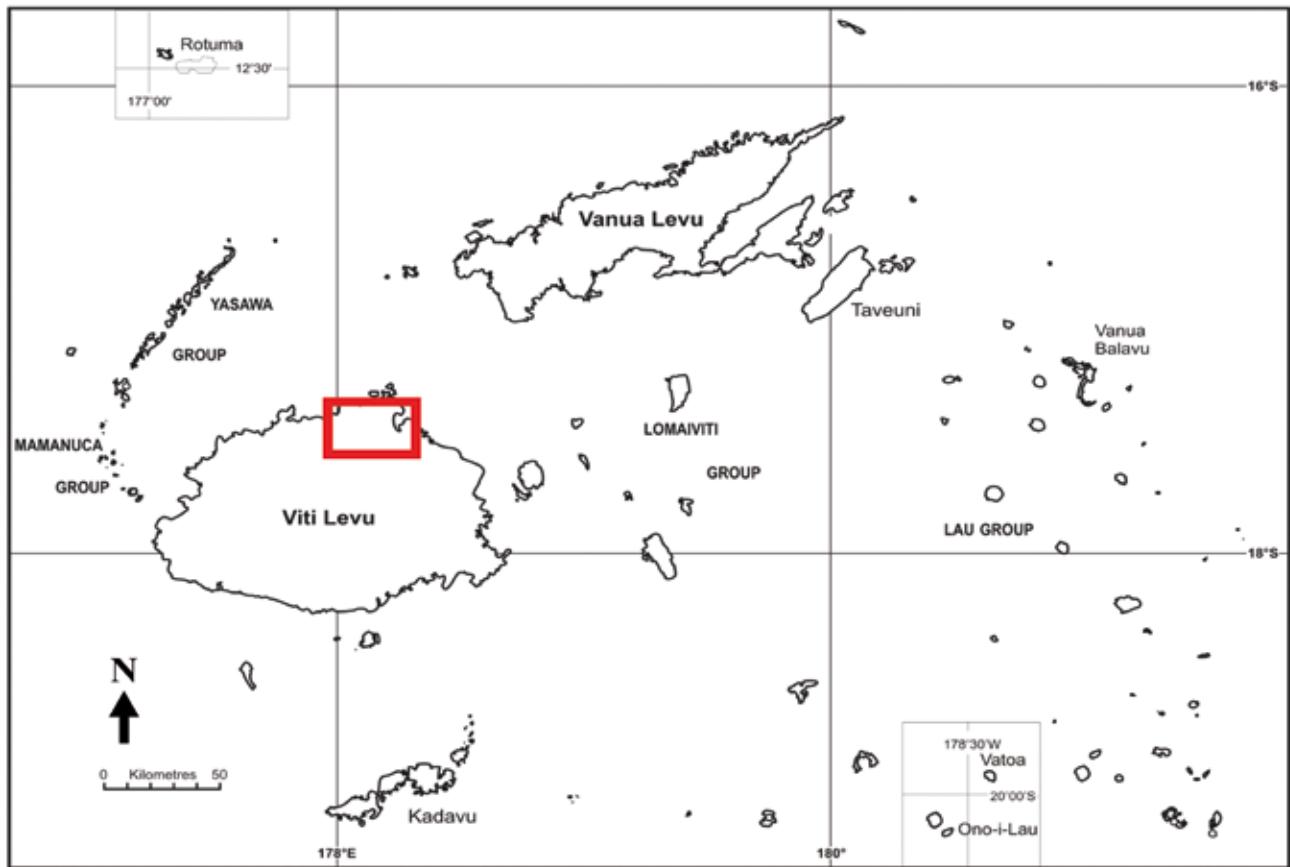
URL: <https://doi.org/10.1896/054.057.0115>

BioOne Complete (complete.BioOne.org) is a full-text database of 200 subscribed and open-access titles in the biological, ecological, and environmental sciences published by nonprofit societies, associations, museums, institutions, and presses.

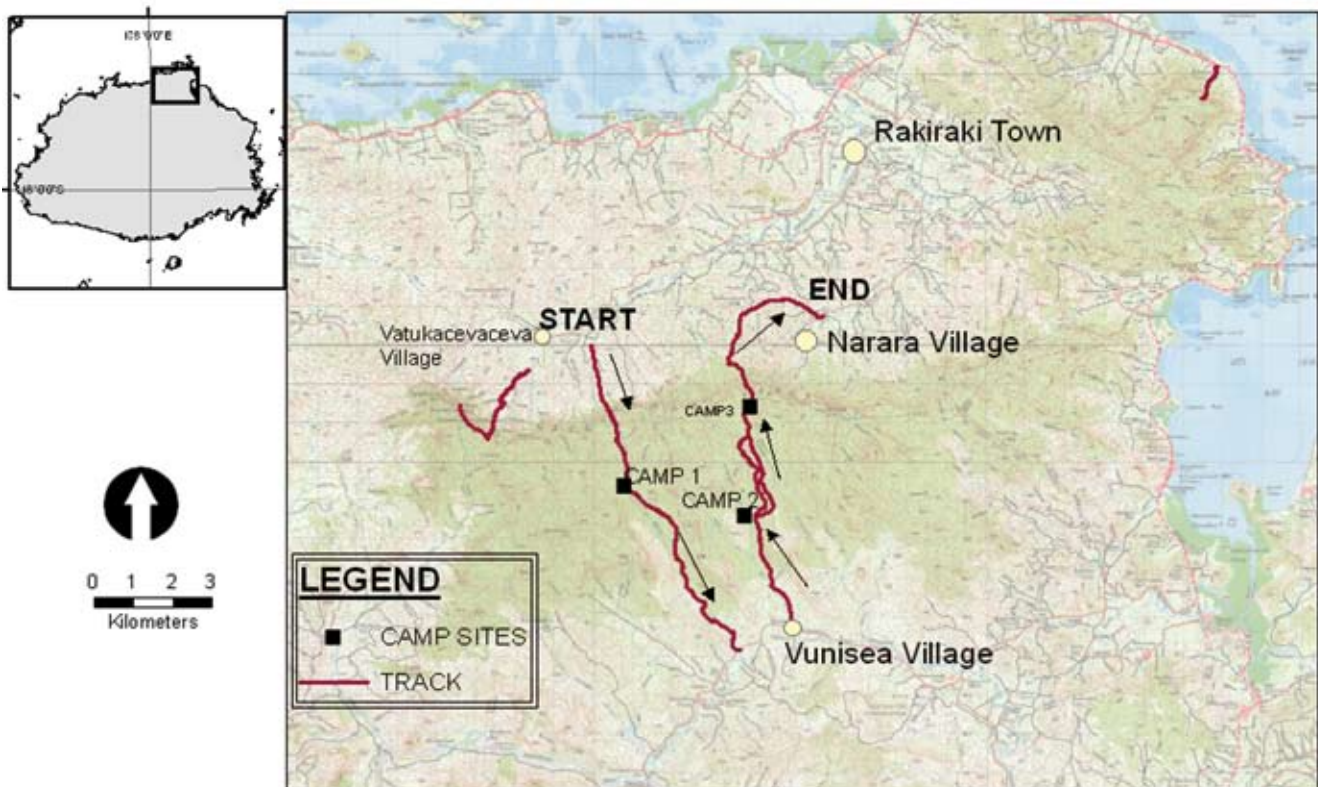
Your use of this PDF, the BioOne Complete website, and all posted and associated content indicates your acceptance of BioOne's Terms of Use, available at www.bioone.org/terms-of-use.

Usage of BioOne Complete content is strictly limited to personal, educational, and non - commercial use. Commercial inquiries or rights and permissions requests should be directed to the individual publisher as copyright holder.

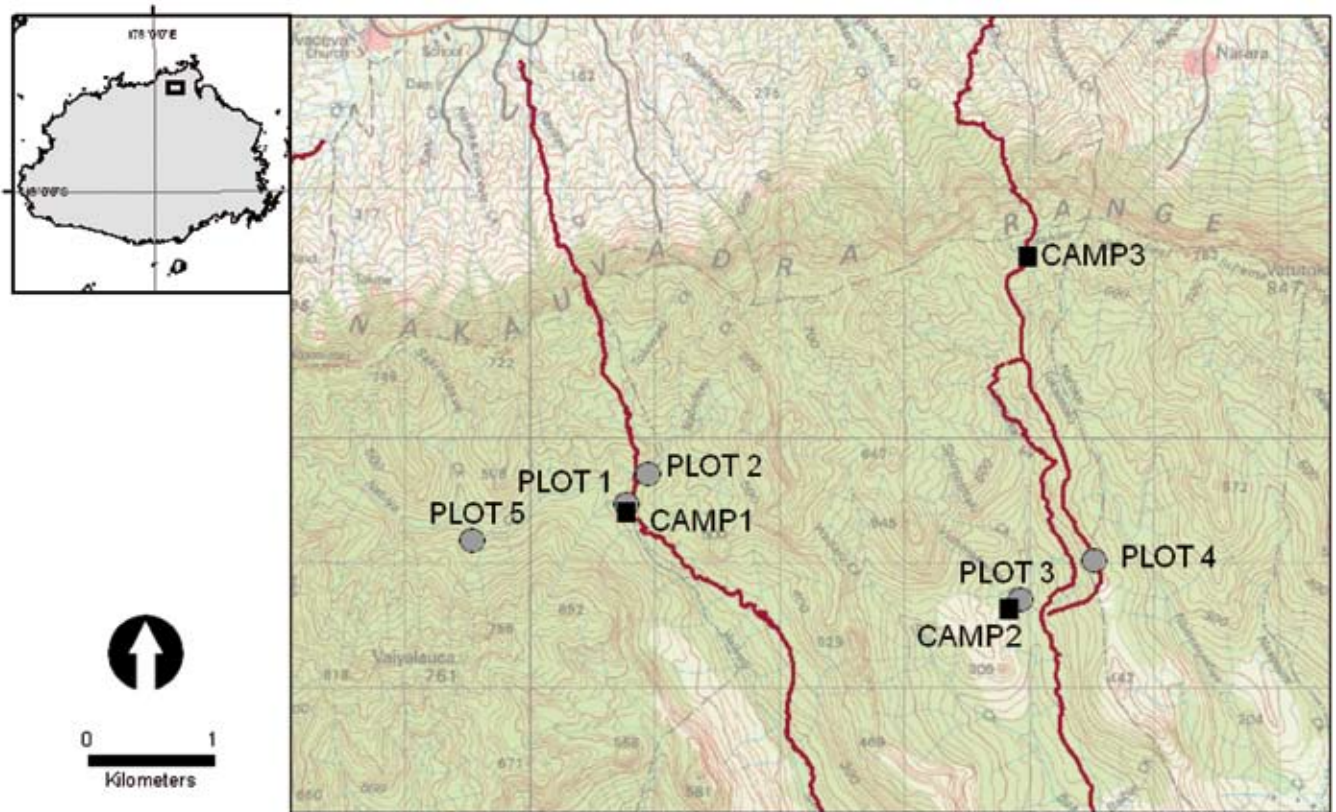
BioOne sees sustainable scholarly publishing as an inherently collaborative enterprise connecting authors, nonprofit publishers, academic institutions, research libraries, and research funders in the common goal of maximizing access to critical research.



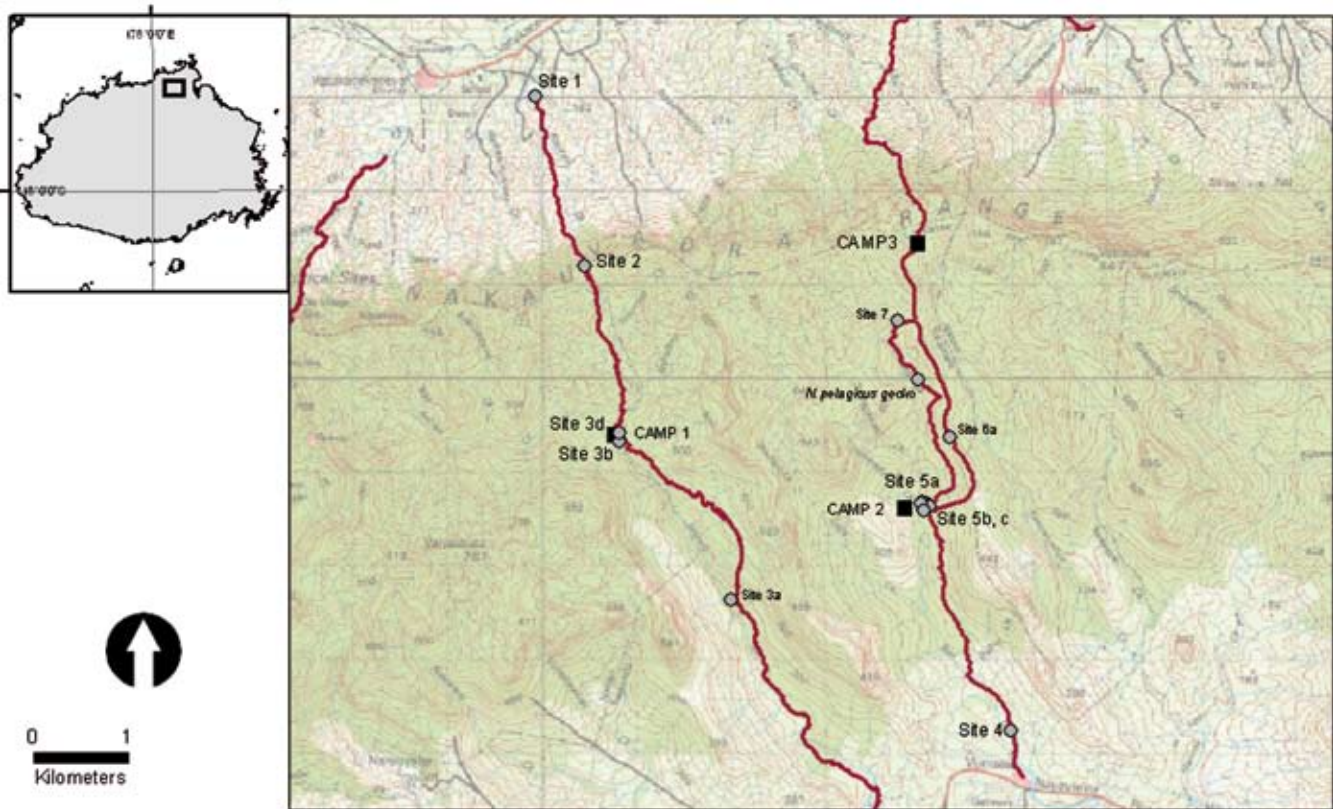
Map 1a. Map of Fiji with location of Nakauvadra Range on Viti Levu.



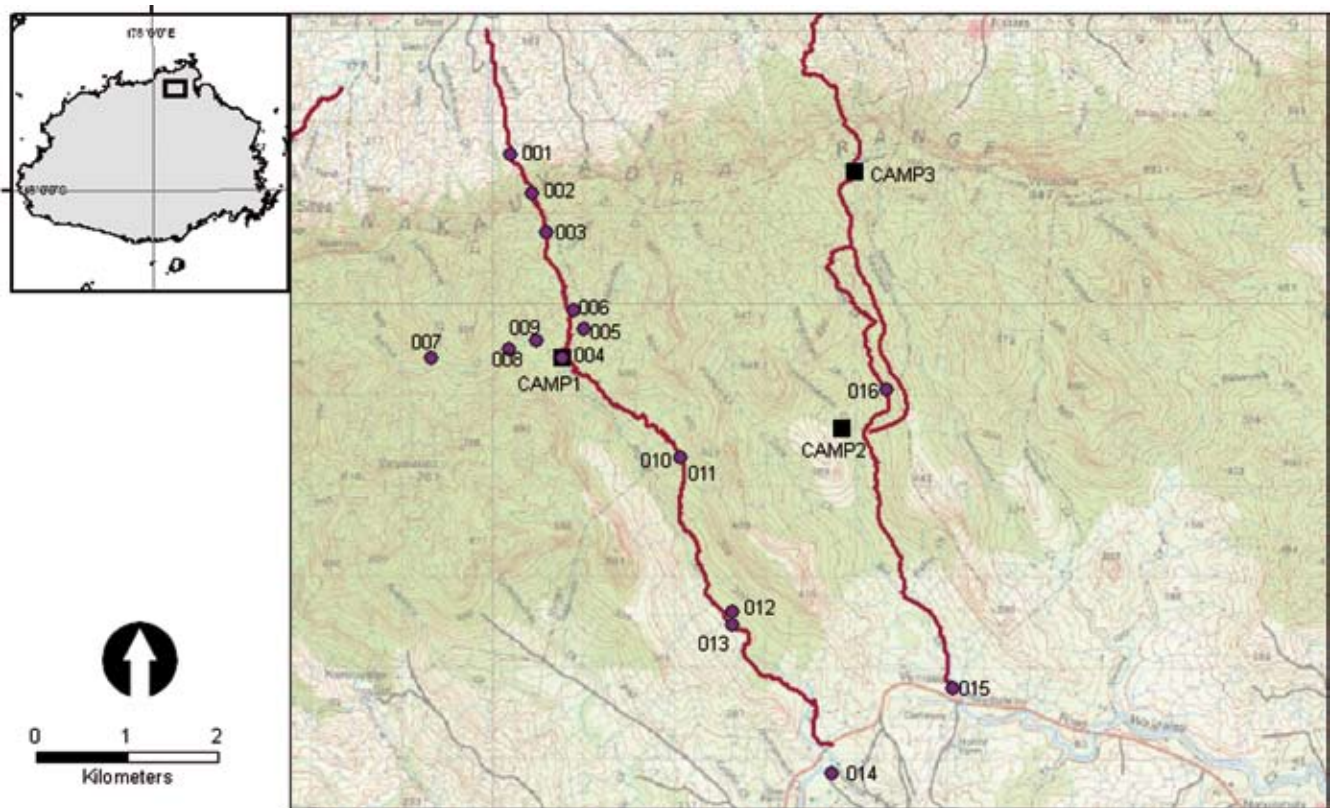
Map 1b. Location of survey areas within the Nakauvadra Range



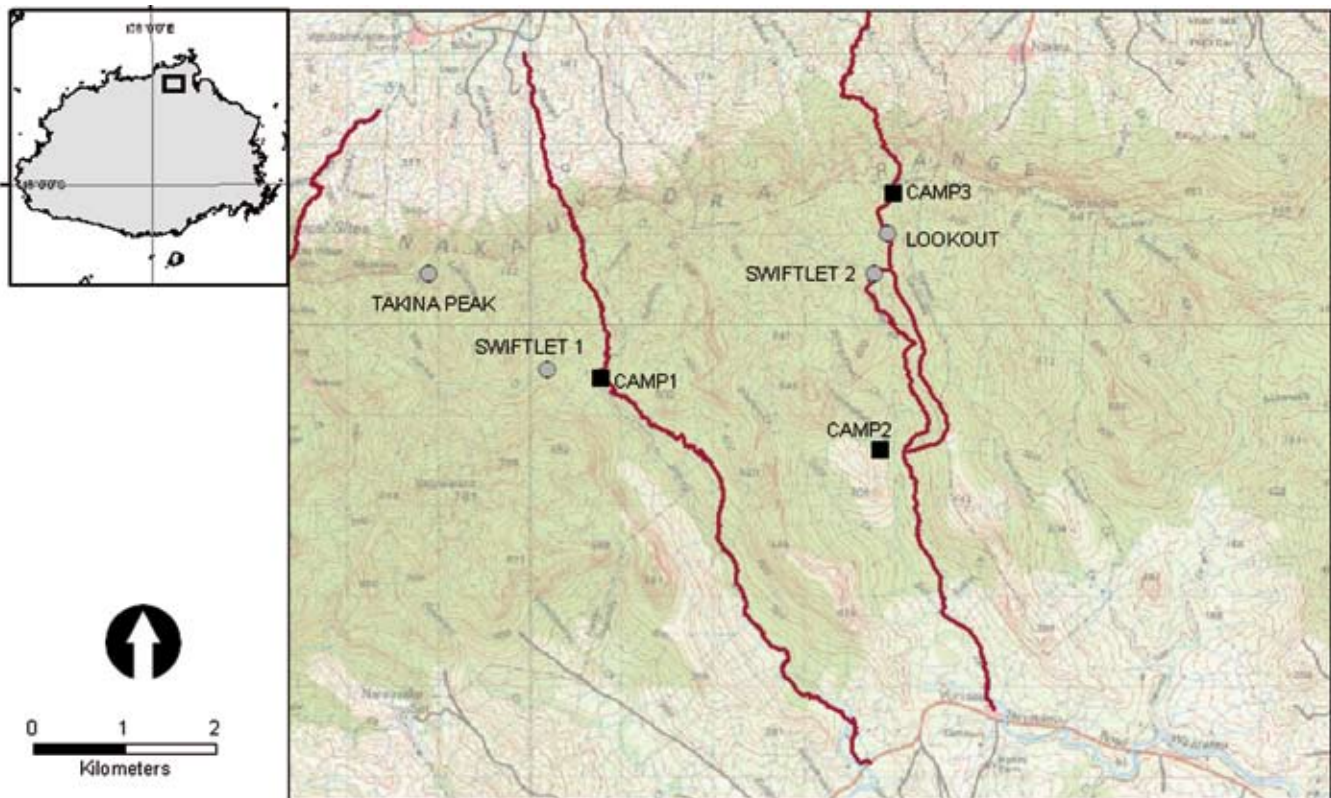
Map 2. Vegetation sampling sites in the Nakauvadra Range



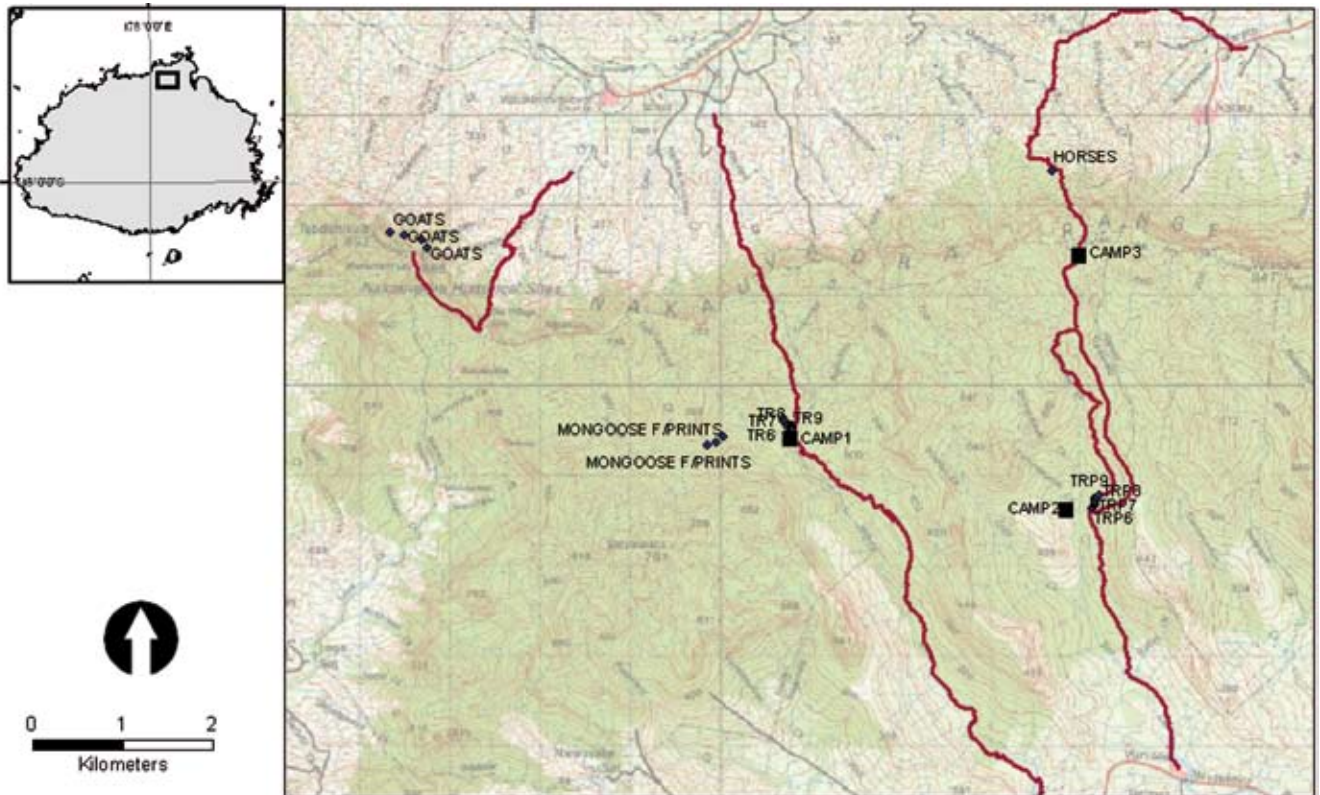
Map 3. Herpetofauna sampling sites in the Nakauvadra Range



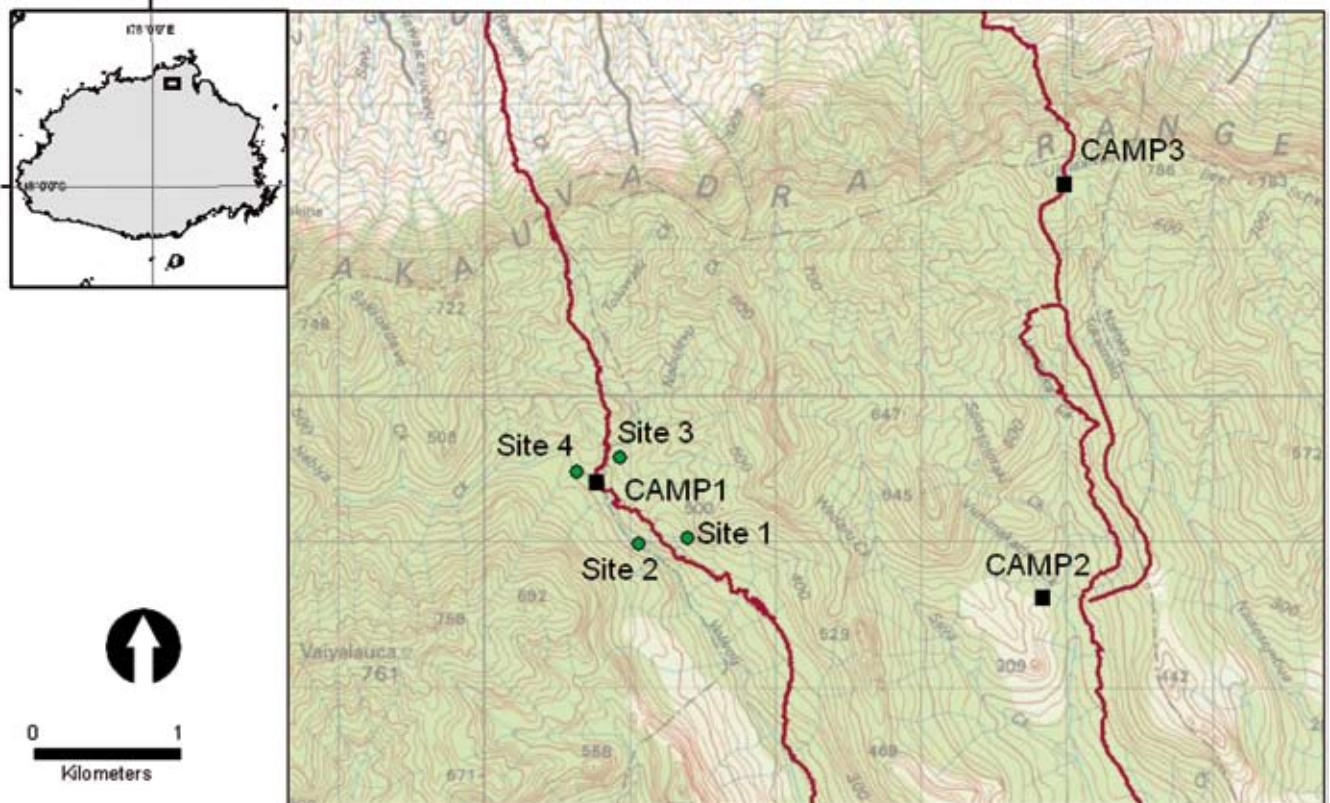
Map 4. Bird sampling sites in the Nakauvadra Range



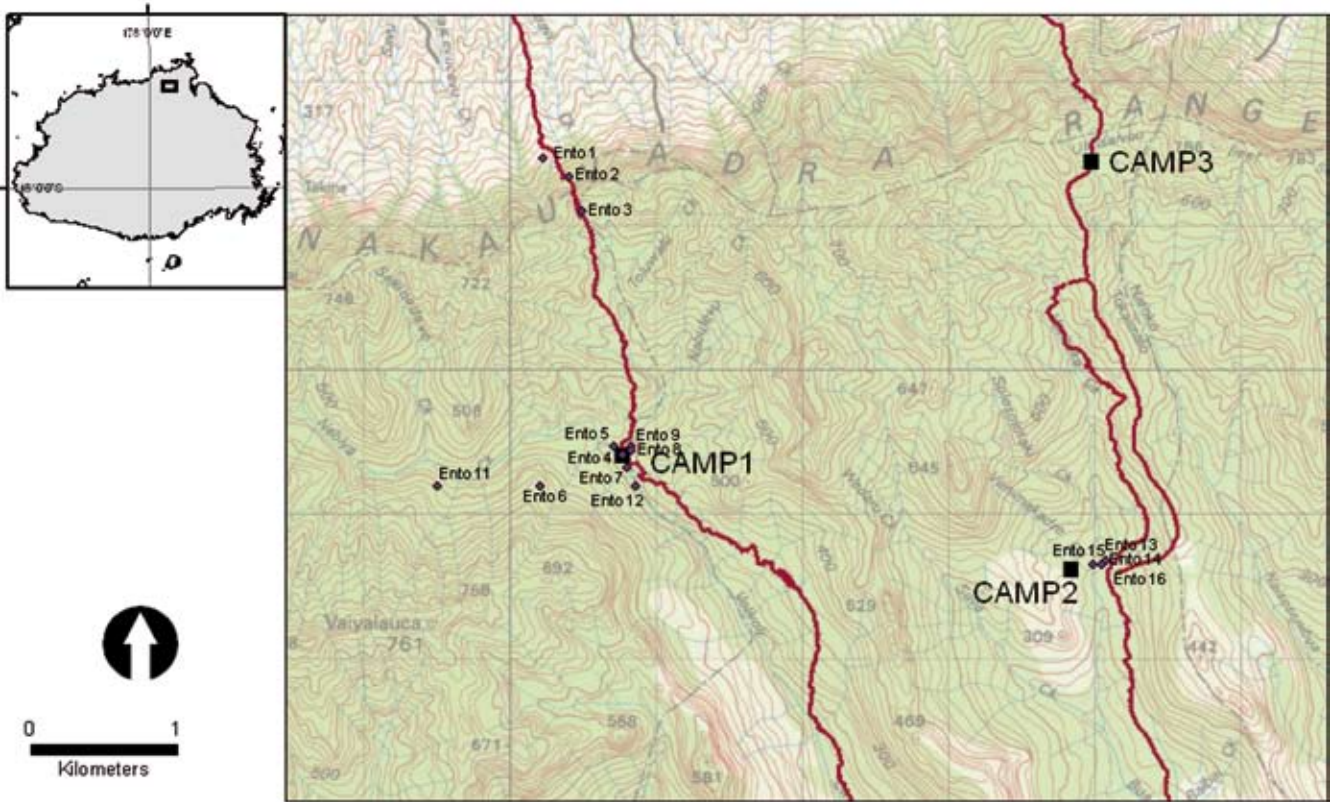
Map 5. Bat sampling sites in the Nakauvadra Range



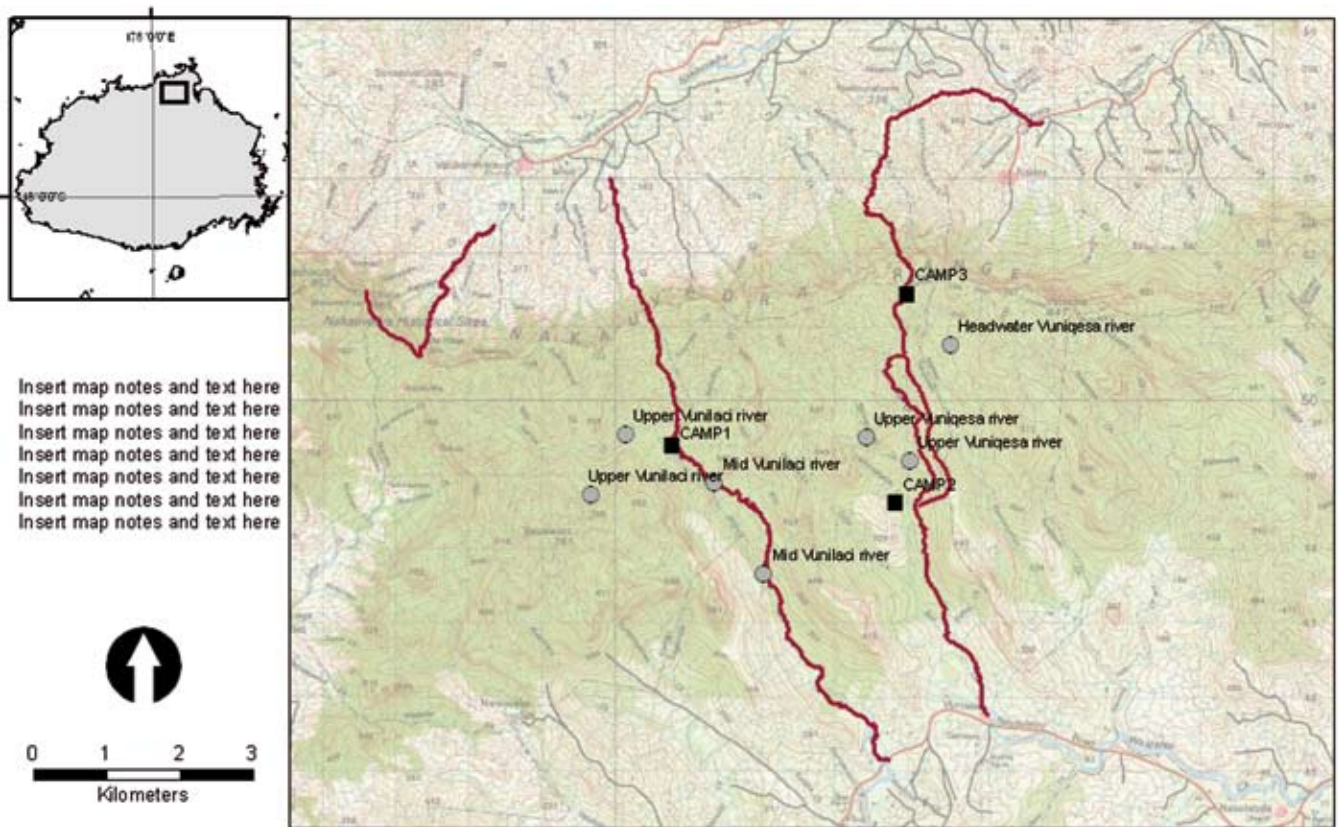
Map 6. Invasive mammal sampling sites in the Nakauvadra Range



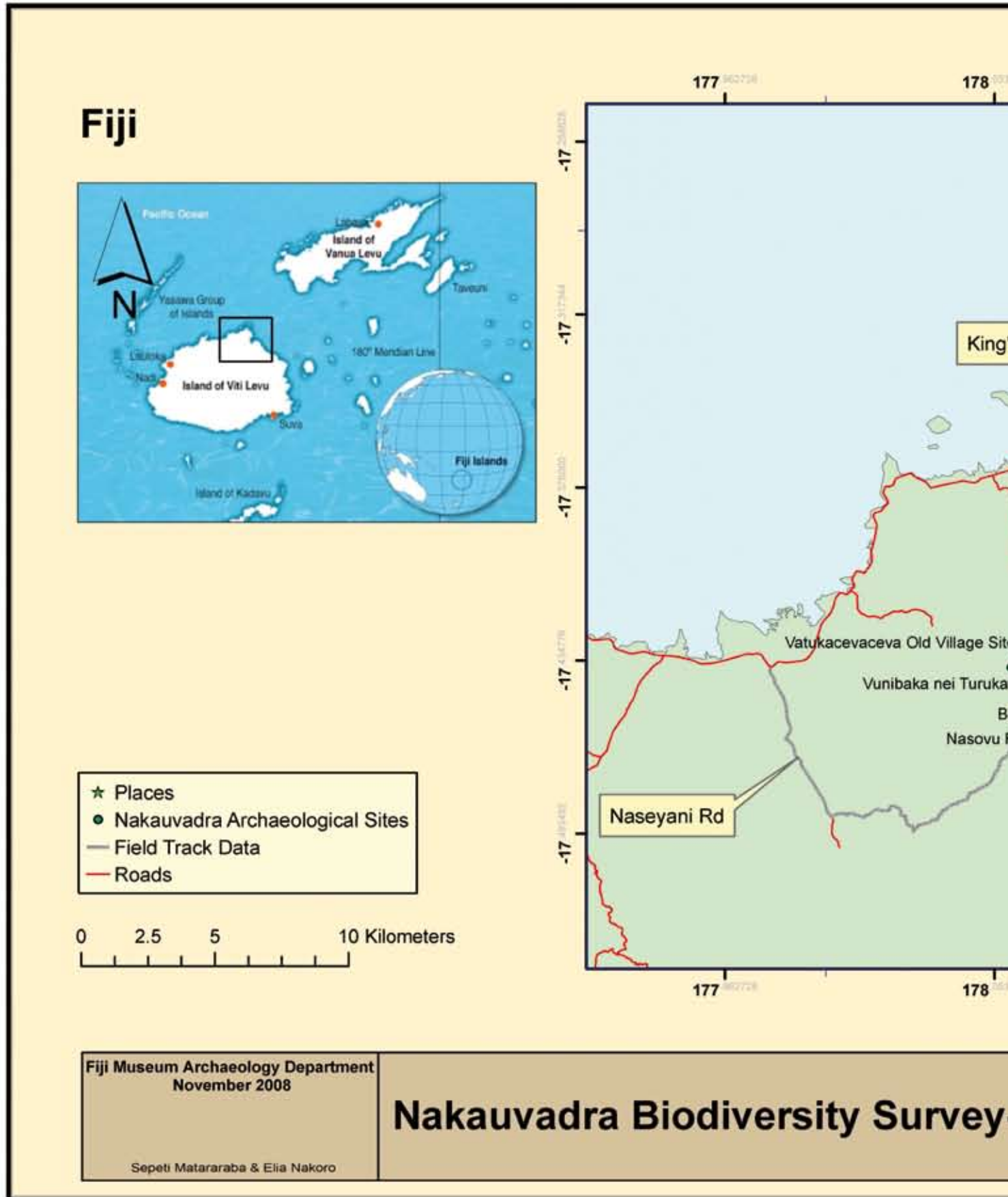
Map 7. Freshwater macroinvertebrate sampling sites in the Nakauvadra Range

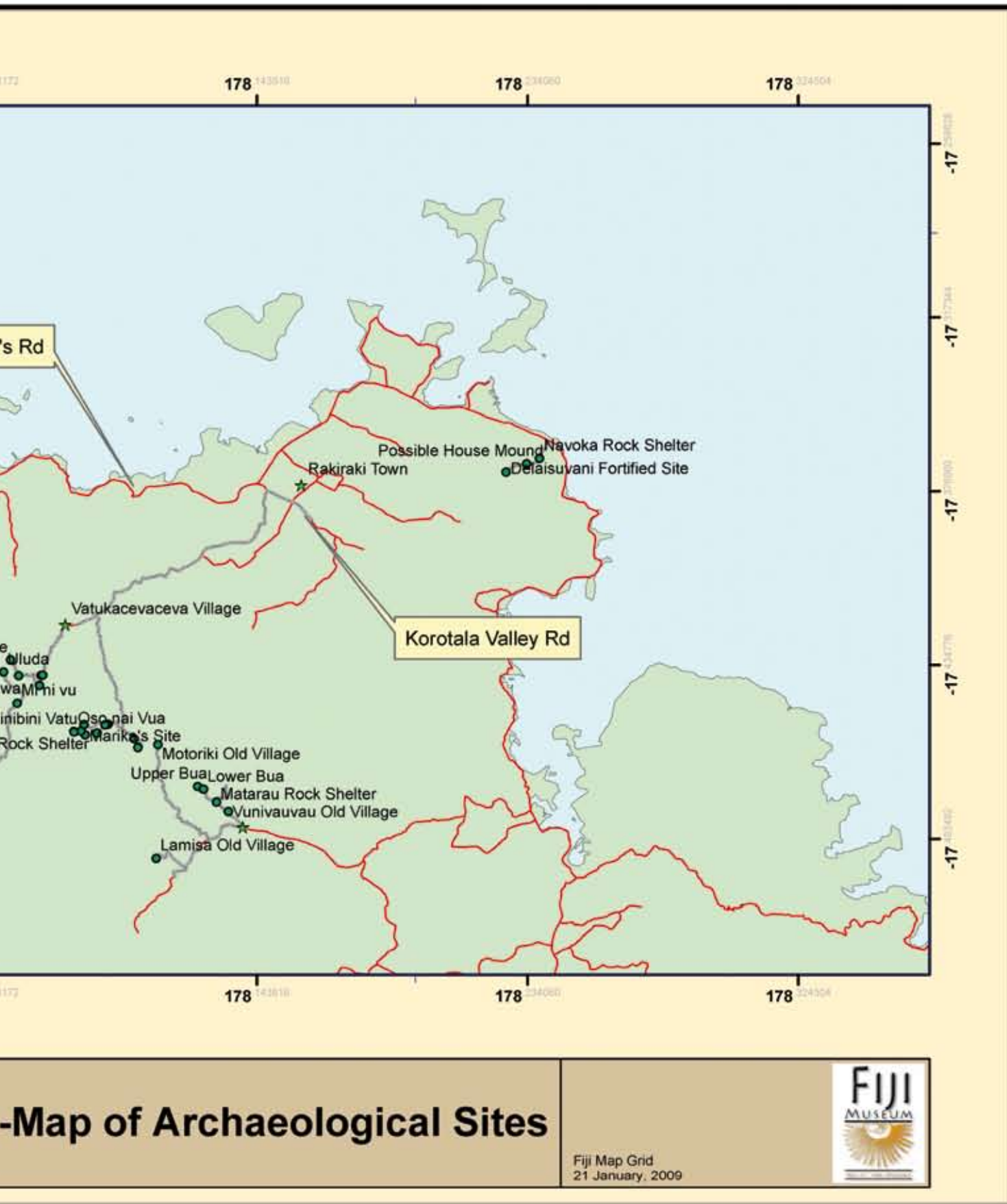


Map 8. Insect sampling sites in the Nakauvadra Range



Map 9. Freshwater fish sampling sites in the Nakauvadra Range





-Map of Archaeological Sites



Fiji Map Grid
21 January, 2009

Photographer's initials are listed at the end of each photo description. NT = Nunia Thomas, GB = Gilianne Brodie,

AW = Art Whistler, VC = Visheshni Chandra, BT = Baravi Thaman, EN = Elia Nokoro



1. Dry sections of Toluwalu Stream with intermittent non-stagnant pools of water (NT)



2. Volivoli Creek, downstream of Base Camp 1 is dominated by big boulders (NT)



3. Upper Nabiya Stream, with low water levels during the survey (NT)



4. Vuniqese Stream, just beside Camp 2. The gravid female *P. vitianus* was captured from this stream on one of these boulders. The skink, *E. impar* was also observed in high abundance, foraging along this stream bank (NT)



5a. Fiji Ground Frog, *Platymantis vitianus* (NT)



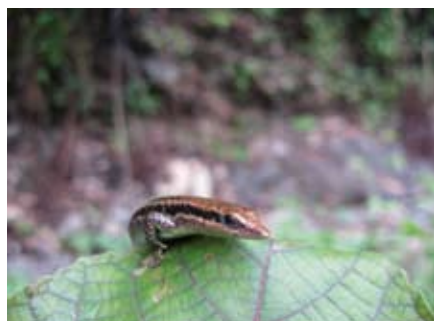
5b. Fiji Tree Frog, *P. vitiensis* (NT)



5c. Introduced cane toad, *Bufo marinus* (NT)



6. Blue-tailed copper striped skink (native), *E. impar* foraging on the boulders along Vuniqese Stream (NT)



7. The endemic Fiji copper headed skink, *E. parkeri* captured along Nabiya Stream (NT)



8a. Giant forest gecko, *G. vorax* found inland from Nabiya Stream, underneath tree bark (NT)



8b. Giant forest gecko, *G. vorax* found inland from Nabiya Stream, underneath tree bark (NT)



9. Skull of the introduced mongoose *H. fuscus* found along a dry section of the Nabiya Stream bed. The whole skeleton was still intact when discovered (NT)



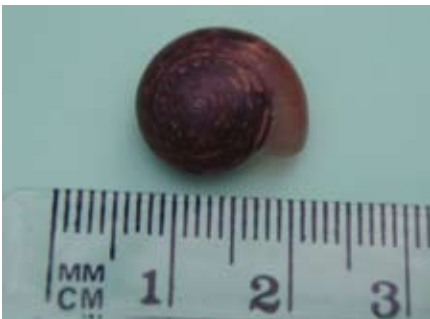
10. Introduced species *Parmarion martensi* Simroth 1893 (GB)



11. Shell of the endemic Fiji species *Placostylus* sp. (A10) (GB)



12a. Living specimen of likely endemic species (A2) from the family *Helicarionidae* (GB)



12b. Living specimen of likely endemic species (A5) from the family *Helicarionidae* (GB)



13. Cicada commonly encountered in light traps (AW)



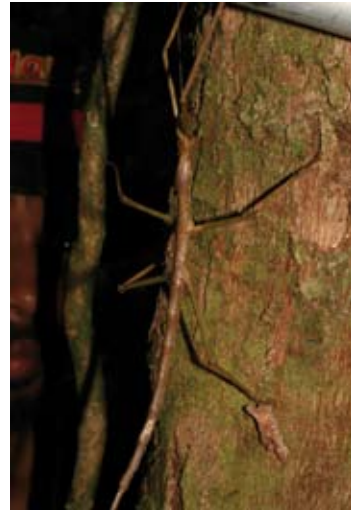
14. A nymph of the genus *Diaphlebus* (Tettigoniidae: Mecopodinae). Three endemic species are known from Fiji and were first recorded in the 1890s; (Naskrecki, pers. comm. 2009) (AW)



15. Endemic Fijian swallowtail butterfly, *Papilio schmeltzi* (VC)



16. Endemic and very rare Fijian stick insect, *Nisysus spinulosus* (AW)



17. Endemic and rare Fijian stick insect (right), *Phasmotaenia inermis* (AW)



18. Shy and docile scorpion *Liocheles australasiae* (AW)



19. Male climbing goby, *Sicyopus zosterophorum* (Upper Vunilaci River) 80 mm SL (BT)



20. Recently used *Derris* roots on the banks of the Vunilaci River (BT)



21. The introduced species *Oreochromis mossambicus* is highly abundant in lower catchment areas (BT)



22. Algae bloom in the lower catchment, indicative of nutrient loading and harmful to freshwater biodiversity (BT).



23. Searching for remains at Vunirautoba (EN)



24. The rock arch that gave Osa-nai-vua its name (EN)



25. The front face of the rock at Osa-nai-vua (EN)



26. Binibini (Putupu) qele (EN)



27. Surface investigation at Nasovu rock shelter (EN)



28. Scavenging the Asenauluna site for pottery remains (EN)



29. Resting underneath the huge rock at the Wainibela rock shelter (EN)



30. The flattened platform at Marika's site (EN)



31. House mounds at Hilda's site (EN)



32. Belo's rock shelter (EN)



33. Inside the ring ditch at the Motoriki Hill fortification (EN)



34. Stone wall at the Motoriki Hill Fort (EN)



35. Map of the Vunivau Old Village (EN)



36. Resting under the Matarau rock shelter (EN)



37. Lower Bua Old village (EN)



38. Upper Bua Old village (EN)



39. The Rogorogivuda at Uluda(EN)



40. Tobu ni sili (EN)



41. One of the brother's house mounds (right) (EN)



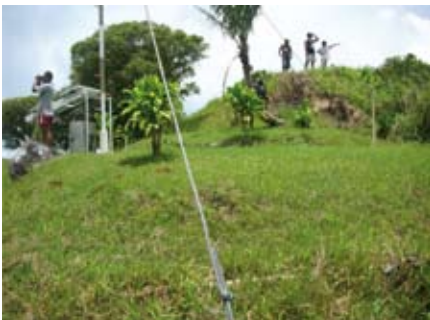
42. The rain tree at Conua (EN)



43. Vatukaceveveva Old Village Site (EN)



44. Resting at the Navoka rock shelter (EN)



45. Delaisuvani Peak (EN)



46. Pottery shards collected by the freshwater group (EN)



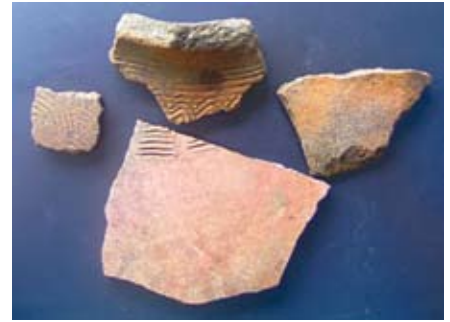
47. Pottery shards from Matarau rock shelter (EN)



48. Pottery shards from the Asenauluna rock shelter (EN)



49. Pottery shards from Bua Hill Fort (EN)



50. Pottery shards from old Bua Village (EN)



51. Pottery shards from the Wainibelo rock shelter (EN)



52. Pottery shards from the Nasovu rock shelter (EN)



53. Water jug handle from Vatukaceveva Village (EN)