



Mapas e Imágenes

Source: Rapid Assessment of the Biodiversity of the Ramal Calderas, Venezuelan Andes: 18

Published By: Conservation International

URL: <https://doi.org/10.1896/054.056.0106>

BioOne Complete (complete.BioOne.org) is a full-text database of 200 subscribed and open-access titles in the biological, ecological, and environmental sciences published by nonprofit societies, associations, museums, institutions, and presses.

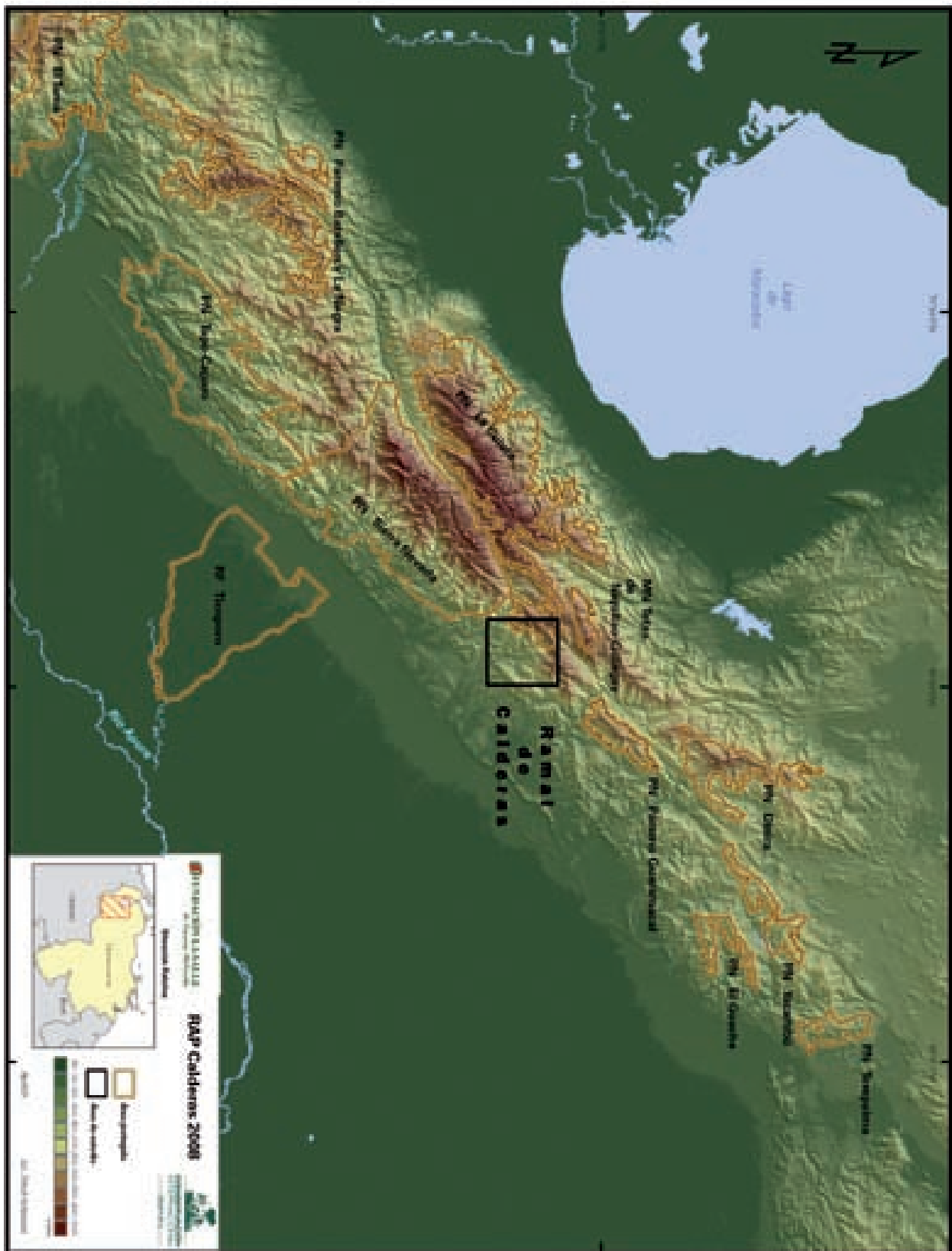
Your use of this PDF, the BioOne Complete website, and all posted and associated content indicates your acceptance of BioOne's Terms of Use, available at www.bioone.org/terms-of-use.

Usage of BioOne Complete content is strictly limited to personal, educational, and non - commercial use. Commercial inquiries or rights and permissions requests should be directed to the individual publisher as copyright holder.

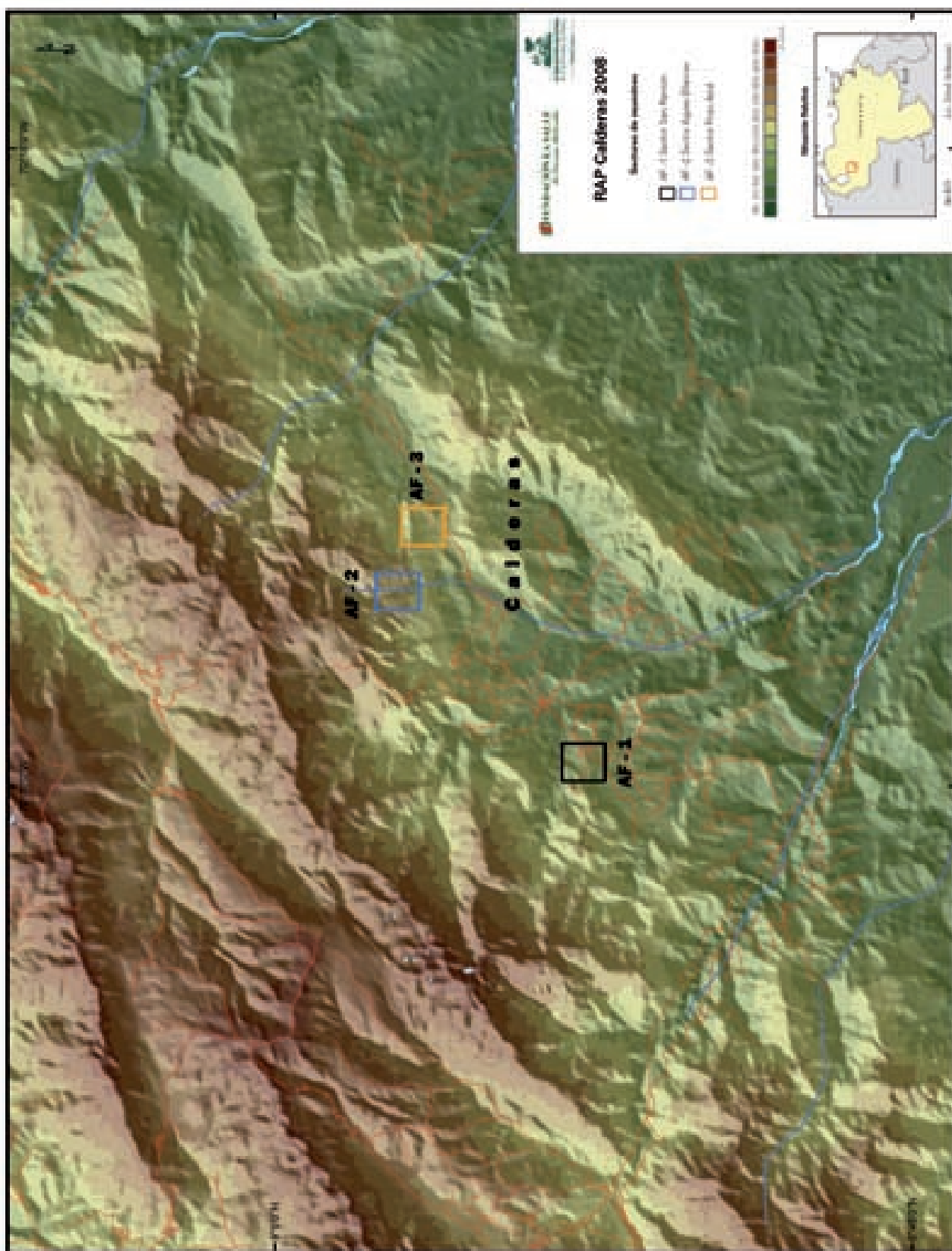
BioOne sees sustainable scholarly publishing as an inherently collaborative enterprise connecting authors, nonprofit publishers, academic institutions, research libraries, and research funders in the common goal of maximizing access to critical research.

Mapas e imágenes

Mapa 1



Mapa 2

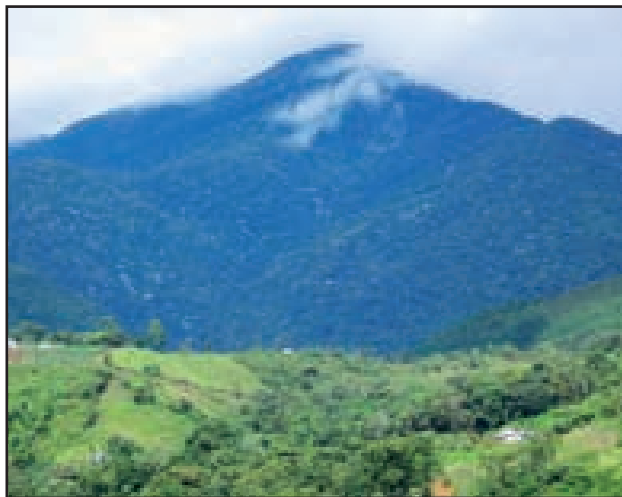




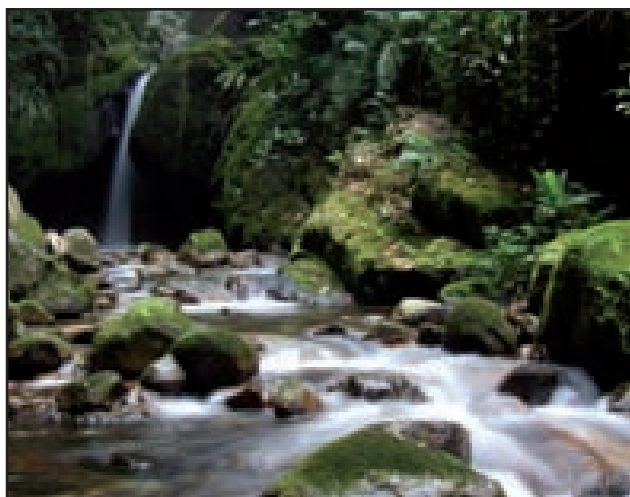
AF1. Sector San Ramón. Foto P. Soriano



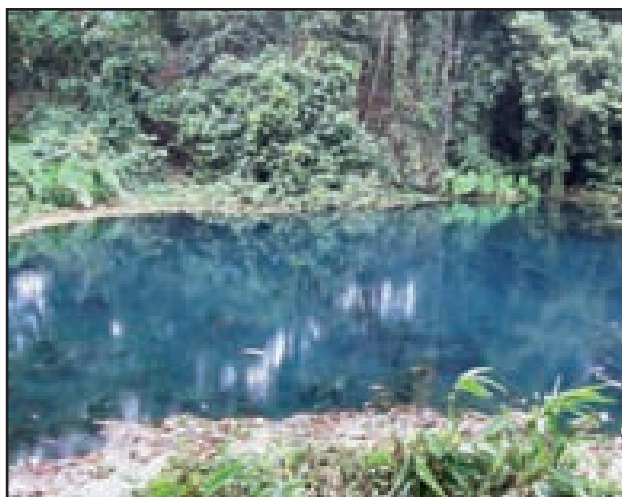
AF1. Cerro Gobernador. Foto J. H. Castaño



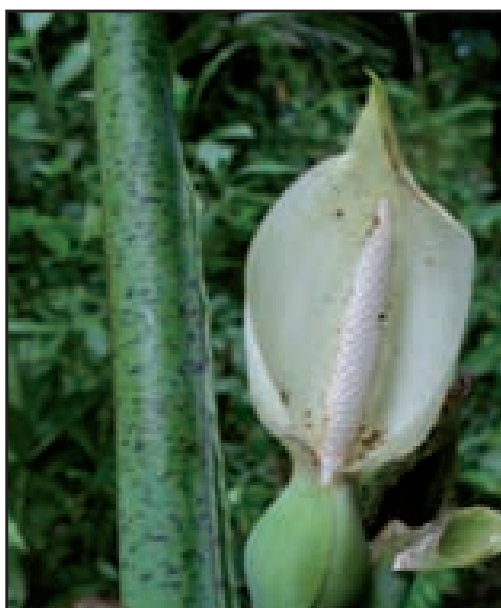
AF2. Sector Aguas Blancas. Foto A. Rial



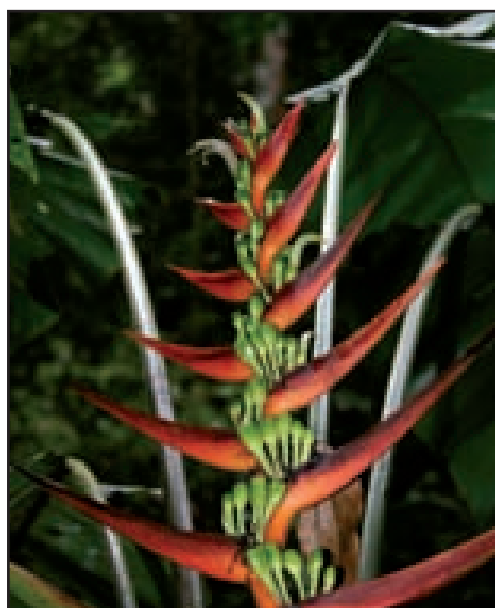
AF2. Pozo El Niño. Quebrada del Medio. Foto O. Lasso-Alcalá



AF3. Pozo Azul. FotoA. Rial



Arecaceae nuevo registro. Foto M. Niño



Heliconia nuevo registro. Foto M. Niño



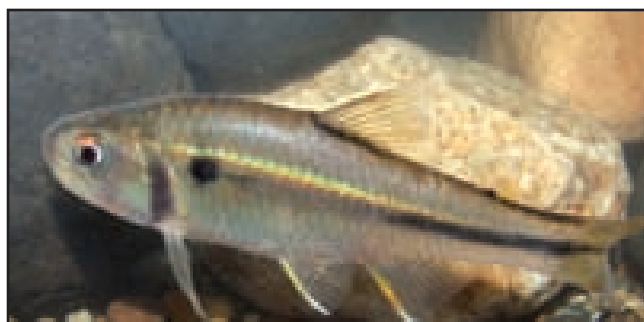
Astroblepus sp. nov. Foto O. Lasso-Alcalá



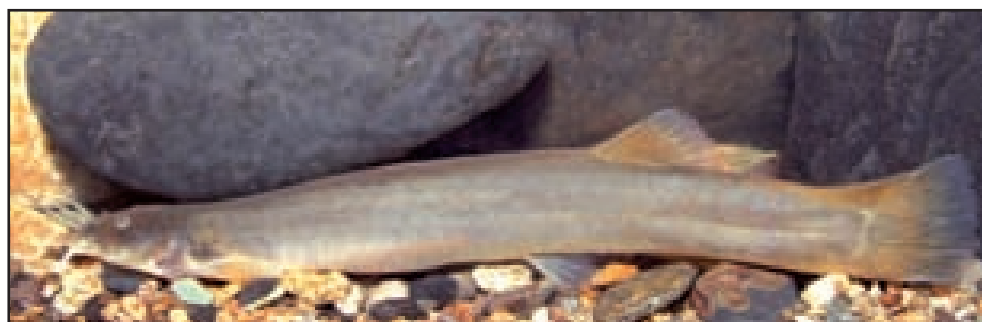
Chaetostoma dorsale. Foto O. Lasso-Alcalá



Characidium chupa. Foto O. Lasso-Alcalá



Creagrutus gyrosphilus. Foto O. Lasso-Alcalá



Trichomycterus sp. nov. Foto O. Lasso-Alcalá



Mannophryne cordilleriana (hembra). Foto C. Barrio-Amorós



Hypsiboas lanciformis (macho). Foto C. Barrio-Amorós



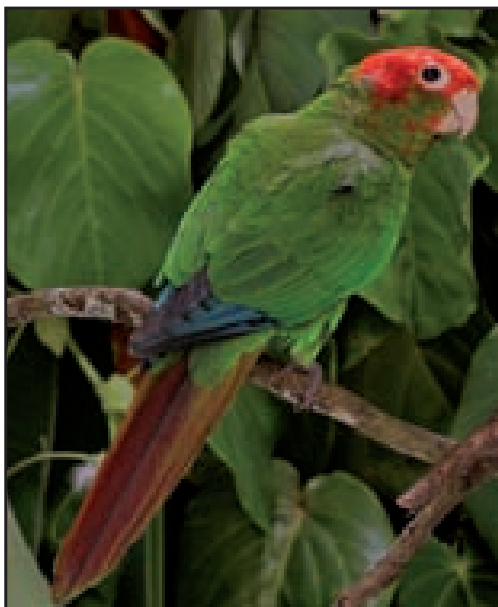
Riama inanis (hembra). Foto C. Barrio-Amorós



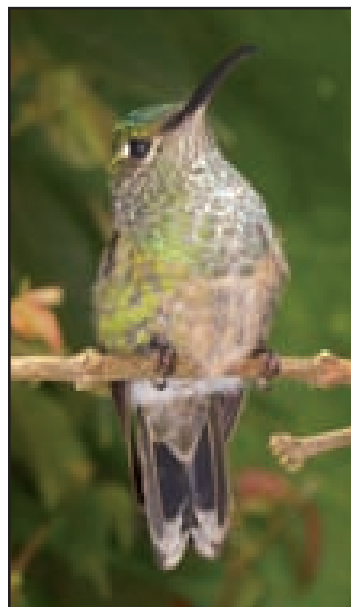
Gonatodes concinatus. Foto C. Barrio-Amorós



Micrurus mipartitus. Foto J. H. Castaño



Perico cabecirojo (*Pyrrhura rhodocephala*). Foto P. Soriano



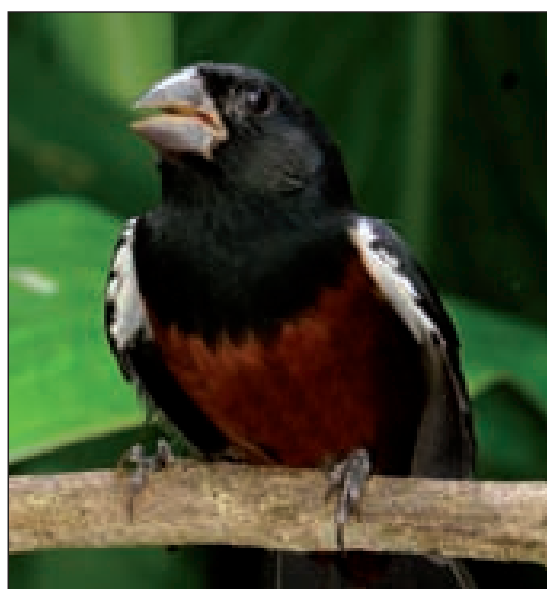
Colibrí pechiazul (*Sternoclyta cyanopectus*). Foto P. Soriano



Capitán (*Eubucco bourcierii*). Foto P. Soriano



Raspahoja pechirufu (*Sclerurus mexicanus*). Foto P. Soriano



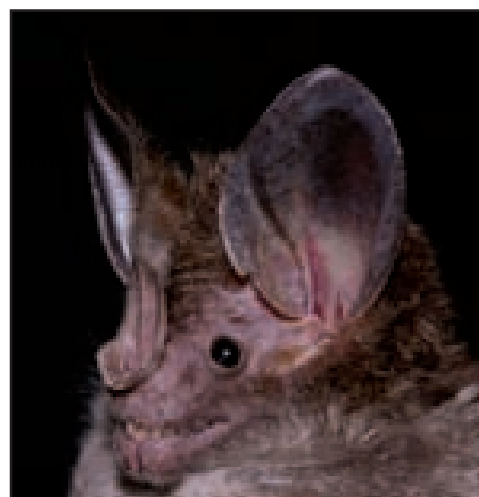
Semillero verdicastaño (*Oryzoborus angolensis*). Foto P. Soriano



Icthyomys hidrobates. Foto P. Soriano



Aepeomys lugens. Foto P. Soriano



Murciélago lanoso (*Chrotopterus auritus*). Foto P. Soriano



Nephelomys meridensis. Foto J. H. Castaño



Perrito de agua (*Chironectes minimus*). Foto P. Soriano



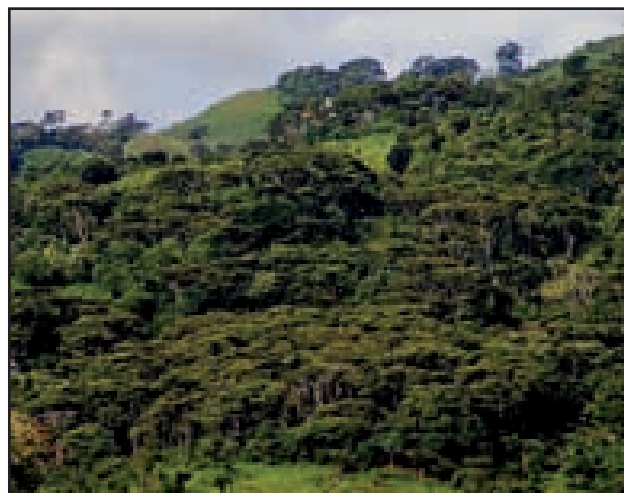
Asistentes de campo RAP Calderas. Foto S. Ortiz



Equipo RAP Calderas. Foto S. Ortiz



Equipo RAP Calderas. Foto S. Ortiz



Cafetal de sombra. Foto P. Soriano