



Developing a multispecies weed competition model for high-yielding cotton

Authors: Charles, Graham W., Sindel, Brian M., Cowie, Annette L., and Knox, Oliver G. G.

Source: Weed Technology, 35(2) : 202-209

Published By: Weed Science Society of America

URL: <https://doi.org/10.1017/wet.2020.97>

BioOne Complete (complete.BioOne.org) is a full-text database of 200 subscribed and open-access titles in the biological, ecological, and environmental sciences published by nonprofit societies, associations, museums, institutions, and presses.

Your use of this PDF, the BioOne Complete website, and all posted and associated content indicates your acceptance of BioOne's Terms of Use, available at www.bioone.org/terms-of-use.

Usage of BioOne Complete content is strictly limited to personal, educational, and non - commercial use. Commercial inquiries or rights and permissions requests should be directed to the individual publisher as copyright holder.

BioOne sees sustainable scholarly publishing as an inherently collaborative enterprise connecting authors, nonprofit publishers, academic institutions, research libraries, and research funders in the common goal of maximizing access to critical research.

Research Article

Cite this article: Charles GW, Sindel BM, Cowie AL, Knox OGG (2021) Developing a multispecies weed competition model for high-yielding cotton. *Weed Technol.* **35**: 202–209 doi: [10.1017/wet.2020.97](https://doi.org/10.1017/wet.2020.97)

Received: 2 June 2020

Revised: 30 July 2020

Accepted: 22 August 2020

First published online: 28 August 2020

Associate Editor:

Daniel Stephenson, Louisiana State University Agricultural Center

Keywords:

crop yield loss; dynamic model; integrated weed management; interference; threshold

Nomenclature:

Cotton; *Gossypium hirsutum* L. GOSHI; common sunflower; *Helianthus annuus* L. HELAN; Japanese millet; *Echinochloa esculenta* (A. Braun) H. Scholz; mungbean; *Vigna radiata* (L.) R. Wilczek


Author for correspondence:

Graham W. Charles, New South Wales Department of Primary Industries, Australian Cotton Research Institute, Locked Bag 1000, Narrabri, NSW 2390, Australia
Email: graham.charles@dpi.nsw.gov.au

© The Author(s), 2020. Published by Cambridge University Press on behalf of the Weed Science Society of America. This is an Open Access article, distributed under the terms of the Creative Commons Attribution-NonCommercial-NoDerivatives licence (<http://creativecommons.org/licenses/by-nc-nd/4.0/>), which permits non-commercial re-use, distribution, and reproduction in any medium, provided the original work is unaltered and is properly cited. The written permission of Cambridge University Press must be obtained for commercial re-use or in order to create a derivative work.



Developing a multispecies weed competition model for high-yielding cotton

Graham W. Charles¹ , Brian M. Sindel², Annette L. Cowie³ and Oliver G. G. Knox⁴

¹Research Agronomist, Weeds Research Unit, New South Wales Department of Primary Industries, Australian Cotton Research Institute, Narrabri, NSW, Australia; ²Professor of Weed Science, School of Environmental and Rural Science, University of New England, Armidale NSW, Australia; ³Principal Research Scientist, New South Wales Department of Primary Industries, Livestock Industries Centre/University of New England, Armidale, NSW, Australia and ⁴Senior Lecturer, School of Environmental and Rural Science, University of New England, Armidale, NSW, Australia

Abstract

Glyphosate-tolerant and glyphosate-resistant weeds are becoming increasingly problematic in cotton fields in Australia, necessitating a return from a glyphosate dominated system to a more integrated approach to weed management. The development of an integrated weed management system can be facilitated by identifying the critical period for weed control (CPWC), a model that enables cotton growers to optimize the timing of their weed control inputs. Using data from field studies conducted from 2003 to 2015, CPWC models using extended functions, including weed biomass in the relationships, were developed for the mimic weeds, common sunflower and Japanese millet, in high-yielding, fully irrigated cotton. A multispecies CPWC model was developed after combining these data sets with data for mungbean in irrigated cotton, using weed height and weed biomass as descriptors in the models. Comparison of observed and predicted relative cotton-lint yields from the multispecies CPWC model demonstrated that the model reasonably described the competition from these three very different mimic weeds, opening the possibility for cotton growers to use a multispecies CPWC model in their production systems.

Introduction

Weeds are ever-present pests of cotton production in Australia, with glyphosate-tolerant and glyphosate-resistant weeds becoming increasingly problematic over time because of overreliance on glyphosate in the farming system, combined with a reduction in the use of other weed control tactics (Charles et al. 2020a; Koetz 2019a; Werth et al. 2013). The increase in weed issues over the past decade has necessitated the return to a more integrated weed management (IWM) system on many cotton farms, with the increasing use of residual herbicides, interrow cultivation, and hand hoeing (Koetz 2019b). One of the concepts that could facilitate the adoption of an IWM system would be a weed control threshold, enabling cotton growers to optimize the timing of their weed control inputs (Knezevic and Datta 2015; Knezevic et al. 2002; Korres and Norsworthy 2015). A weed control threshold would help cotton growers balance the need to control weeds before they become problematic, against practical considerations such as the availability of equipment and labor and the costs of weed control, including the potential costs of crop damage and off-target herbicide movement. Weeds need to be controlled before they set seed and before weed competition increases to the level at which it results in yield reductions. However, weed control inputs need to be managed to minimize the number of inputs needed over the crop-growing season, and to reduce costs and negative production, and environmental effects (Taylor et al. 2004). A weed control threshold will help cotton growers balance those needs.

Pest control thresholds have been widely used in cotton production in Australia, starting with the introduction of SIRATAC, a pest threshold-based tool introduced in the 1980s for managing heavy infestations of insecticide-resistant helioverpa (*Helicoverpa armigera* and *H. punctigera*; Hearn and Bange 2002). Since then, pest control thresholds have been adopted for all major insect and mite pests of cotton in Australia, with individual thresholds developed for each species or group of closely related species (Grundy 2019). The need for individual thresholds has been necessitated by the widely varying impacts of different insects. Thrips (*Thrips tabaci*, *Frankliniella schultzei*, *F. occidentalis*), for example, can cause unacceptable early-season damage to cotton, but at low numbers they can be beneficial to the crop later in the season because they are key predators of spider-mite (*Tetranychus urticae*) eggs, another major pest species (Grundy 2019). Spider mites are generally a later-season pest, with the threshold modified according to the expected length of the growing season for the differing cotton-growing regions. Hence, different thresholds are applied to thrips and mites because these pests impact the cotton crop in very different ways.

A multispecies weed control threshold should, at least conceptually, be simpler to develop than generalized insect thresholds, because most weeds have similar competitive effects on a

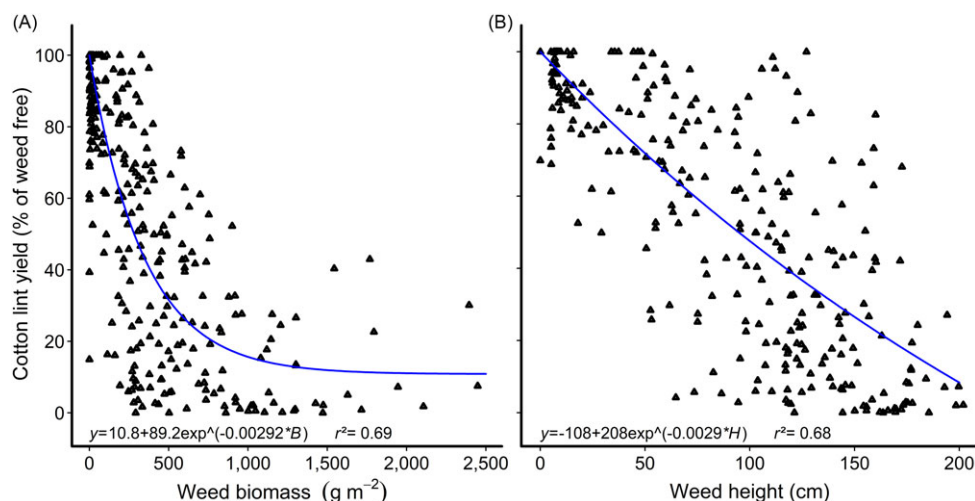


Figure 1. The influence of common sunflower (A) biomass, and (B) plant height on relative cotton-lint yield. Parameters of the models are as follows: y is the relative crop yield; B is the above-ground weed biomass; and H is the weed height. Data points for the relationships are treatment means.

crop, with the level of damage caused by plant competition most closely related to the time of weed emergence (relative to crop emergence) and duration of competition, weed density, and weed size (Askew and Wilcut 2001, 2002a, 2002b; Cortés et al. 2010; Fast et al. 2009; Korres and Norsworthy 2015; Ma et al. 2016; Scott et al. 2000; Webster et al. 2009). The impact of weed competition on a crop can also be affected by factors such as seasonal variation (Bukun 2004), soil moisture (Tingle et al. 2003; Vencill et al. 1993), soil fertility (Robinson 1976; Tursun et al. 2015), row spacing (Tursun et al. 2016), and crop health (Buchanan et al. 1977; Webster and Davis 2007). However, in fully irrigated cotton production in Australia, most of these factors are maintained as closely as possible to optimum, such that these factors should normally have little influence on the crop's response to weed competition. Hence, a generalized weed control threshold model for irrigated cotton in Australia might be possible if the model is able to account for the time of weed emergence, duration of weed growth, weed density, and weed size (Charles et al. 2019a).

Defining the critical period for weed control (CPWC) is an important step in developing an IWM program for a crop and a way to delineate a dynamic weed control threshold model (varying over the crop-growing season) that incorporates the effects of the time of weed emergence (relative to crop emergence) and the duration of weed growth on crop yield (Knezevic and Datta 2015). Previous competition studies have shown that other factors can also affect crop yield, such as weed density, weed height, and weed biomass (Askew and Wilcut 2001, 2002a, 2002b; Cortés et al. 2010; Fast et al. 2009; Scott et al. 2000), but these terms have not been included in CPWC models.

Historically, CPWC models have been site, season, species, and density specific (Charles et al. 2019b). Knezevic and Datta (2015) suggest using growing degree days (GDD) as the measure of time to reduce seasonal differences, and Charles et al. (2019b, 2020a, 2020b) reported that using GDD as the time descriptor overcame the effects of season on the CPWC relationship in fully irrigated cotton in Australian conditions. In an additional step, Charles et al. (2019b, 2020a, 2020b) included weed density as an extra term in the equations used to define the CPWC, and so were able to account for this factor in their CPWC models. In addition, Charles et al. (2020a) tested the possibility of using weed height or weed biomass (kilograms of above-ground dry matter per square meter) in place of weed density in

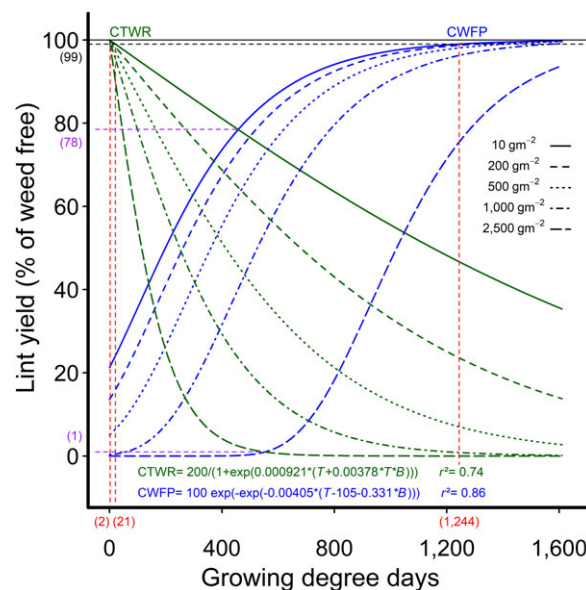


Figure 2. The critical period for weed control (CPWC) for common sunflower competing with cotton. The CPWC is defined by the intersection of the CTWR (green lines), and CWFP (blue lines), with a 1% yield-reduction threshold (horizontal dashed line). The derived relationships for common sunflower biomass of 10, 200, 500, 1,000, and 2,500 kg m⁻² are presented as examples. Parameters of the curves are as follows: y is the relative lint yield; T is the cumulative degree days since planting; and B is the aboveground weed biomass. Data points for the relationships are treatment means. The horizontal solid line indicates the weed-free yield. The limits of the derived CPWC curves for 10 and 2,500 g m⁻² are shown by the vertical dashed red lines and bracketed values. Points of minimum yield loss for 10 and 2,500 g m⁻² are indicated by the dashed purple lines and bracketed values. CTWR, critical time for weed removal; CWFP, critical weed-free period.

their CPWC models and found that the critical time for weed removal (CTWR) relationship was improved for the mimic weed mungbean in fully irrigated cotton when weed biomass was used in the model. The substitution of weed biomass for weed density gave no improvement in the critical weed-free period (CWFP) relationship.

Thus, Charles et al. (2020a) were able to fulfil the theoretical requirement for a more generalized weed control threshold for irrigated cotton, incorporating the time of weed emergence, duration of competition, weed density and size into their extended CPWC

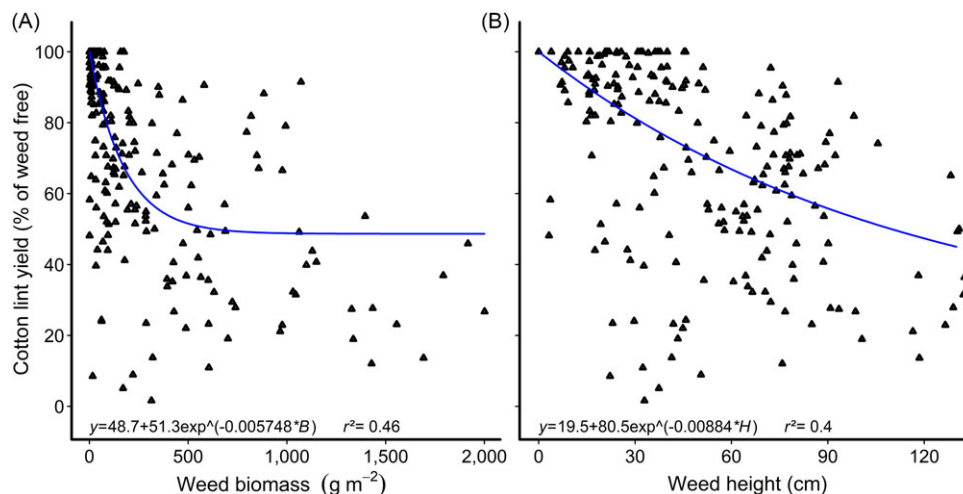


Figure 3. Reduction in cotton-lint yield with increasing Japanese millet (A) biomass and (B) height. Parameters of the models are as follows: y is the relative crop yield; B is the aboveground weed biomass; and H is the weed height. Data points for the relationships are treatment means.

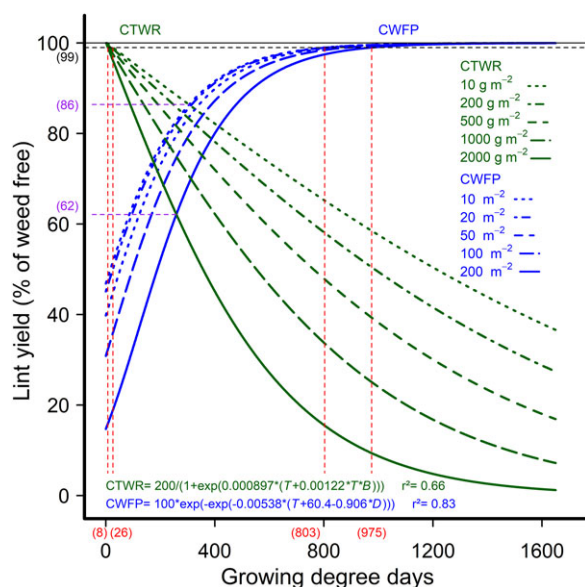


Figure 4. The critical period for weed control (CPWC) for Japanese millet competing with cotton. The CPWC is defined by the intersection of the critical time for weed removal (CTWR; green lines), and critical weed-free period (CWFP; blue lines), with a 1% yield-reduction threshold (horizontal dashed line). The derived relationships for Japanese millet biomass of 10, 200, 500, 1,000, and 2,000 g m^{-2} are presented as examples for the CTWR relationship, and Japanese millet densities of 10, 20, 50, 100, and 200 plants m^{-2} are presented as examples of the CWFP relationship. Parameters of the curves are as follows: y is the relative lint yield; T is the cumulative degree days since planting; B is the aboveground weed biomass, and D is the weed density. Data points for the relationships are treatment means. The horizontal solid line indicates the weed-free yield. The limits of the derived CPWC curves for 10 and 2,000 g m^{-2} (CTWR), and 10 and 200 weeds m^{-2} (CWFP), are shown by the vertical dashed red lines and bracketed values. Points of minimum yield loss for 10 weeds and 10 g m^{-2} , and 200 weeds and 2,000 g m^{-2} , are indicated by the dashed purple lines and bracketed values.

model, because weed biomass (kg m^{-2}) includes components of weed size and weed density. The objective for this study was to determine whether this approach of including weed density and size in the CPWC model could be applied to other weeds with different morphologic characteristics, and in addition, whether this approach would allow a more generalized model to be developed that could be applied across a range of weed species and types.

Materials and Methods

Field studies were conducted at the Australian Cotton Research Institute, Narrabri (30.12°S, 149.36°E; elevation 201 m) on a heavy alluvial clay (fine, thermic, smectitic, Typic Haplustert) soil. Cotton crops were grown over six seasons from 2003 to 2016, in line with standard commercial practices using commercial cotton cultivars on raised hills, 1 m apart. Fields were fertilized with 180 kg N ha^{-1} , applied before planting, and were flood-irrigated as required.

Experimental Design

Within each season, the experiments used a randomized, complete block design with split plots and four replications; subplots were 4 rows (4 m) wide by 10 m in length. Main plots were times of weed planting and removal, and subplots were weed densities. The mimic weeds common sunflower, Japanese millet, and mungbean were individually planted with the crop or at predetermined periods after crop emergence, sown to achieve target densities. The times of weed planting and removal were measured in GDD since planting, defined as:

$$T = \sum \frac{(t_{\min} + t_{\max})}{2} - t_b \quad [1]$$

where t_{\min} and t_{\max} were the daily minimum and maximum air temperatures, respectively, and t_b was the base temperature of 15.5 C (Bukun 2004).

Weed planting and removal times were planned to occur at 150, 300, 450, 600, 750, and 900 GDD. Actual densities of established weeds, and times of planting and removal, were influenced by rain-fall and irrigation events, with weed emergence delayed by inadequate soil moisture on some occasions. Not all target weed densities were achieved in all seasons.

Weed density and height were recorded at the time of weed removal and plants were weighed after drying at 70 C for at least 72 h in a forced-air oven. Cotton was mechanically harvested, and a single-saw gin was used to determine ginning percentage and lint yield. Additional details of the experiments are described in Charles et al. (2019b, 2020a, 2020b).

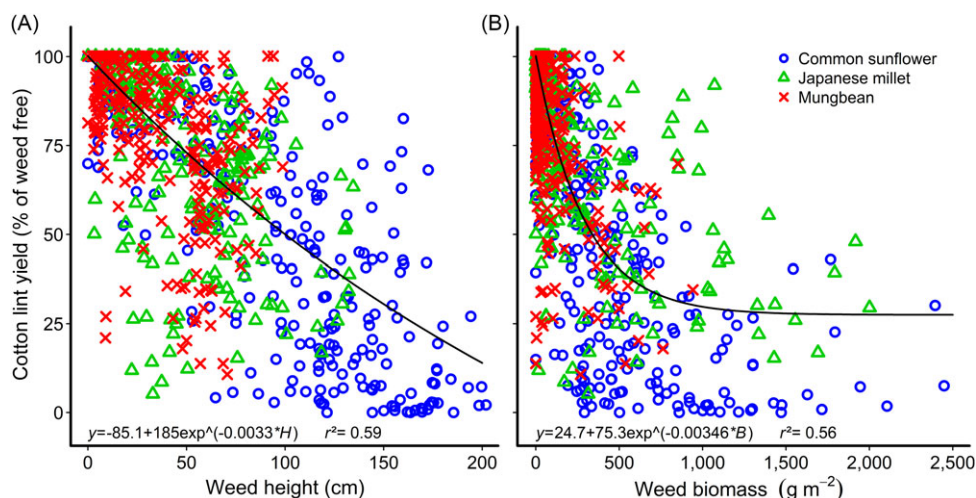


Figure 5. Cotton-lint yield as a function of (A) weed height and (B) weed biomass for the combined data sets from common sunflower, Japanese millet, and mungbean competition. Parameters of the models are as follows: y is the relative crop yield; B is the aboveground weed biomass; and H is the weed height. Data points for the relationships are treatment means.

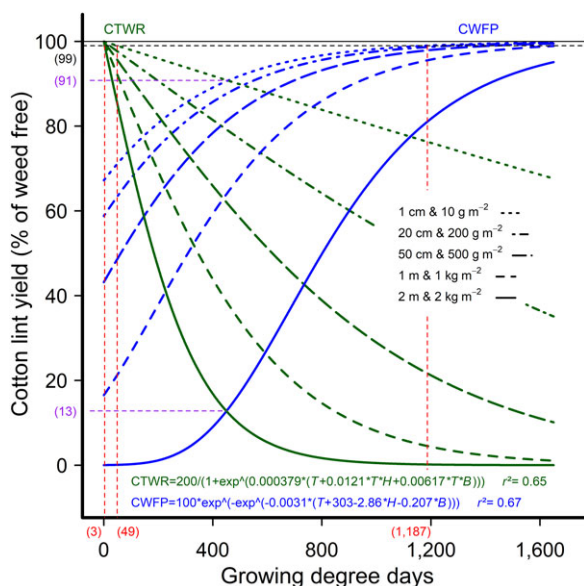


Figure 6. The critical period for weed control (CPWC) for cotton using a multispecies model. The CPWC is defined by the intersection of the critical time for weed removal (CTWR; green lines), and critical weed-free period (CWFP; blue lines), with a 1% yield-reduction threshold (horizontal dashed line). Parameters of the models are as follows: y is the relative lint yield; T is the cumulative degree days since planting; H is the weed height; and B is the aboveground weed biomass. The derived relationships for weed height and biomass of: 1 cm and 10 g m⁻²; 20 cm and 200 g m⁻²; 50 cm and 500 g m⁻²; 1 m and 1 kg m⁻²; and 2 m and 2 kg m⁻² are presented as examples. The horizontal solid line indicates the weed-free yield. The limits of the derived CPWC curves for weeds 1-cm tall and 10 g m⁻² biomass, and 2-m tall and 2 kg m⁻² are shown by dashed red lines and bracketed values. The points of minimum yield loss for weeds 1-cm tall and 10 g m⁻² biomass, and 2-m tall and 2 kg m⁻² are indicated by the dashed purple lines and bracketed values.

Statistical Analysis

The data sets used by Charles et al. (2019b, 2020a, 2020b) were analyzed using R statistical software, version 3.6.3 (R Foundation for Statistical Computing, Vienna, Austria) with a significance level of $P < 0.05$. Regression analysis was used to test the relationships between the relative cotton-lint yield (i.e., lint yield relative to the weed-free control in each season); and weed density, biomass,

and height, using the coefficient of determination (r^2) to assess the fit of each model. Data were fit to Gompertz, logistic and exponential functions as described by Charles et al. (2019b, 2020b), with the exponential function substituted for the logistic function where the shape of the curve did not allow the logistic function to be fit, or where the exponential function improved the fit of the data, as indicated by the Akaike information criterion (AIC). Weed density, height, and biomass were then fit to the CPWC relationships described by Charles et al. (2019b, 2020b) using the AIC to determine the model with the best fit. The CTWR models were constrained to 100% relative yield where no weeds were present.

Data sets from all three mimic weeds, common sunflower (Charles et al. 2019b), Japanese millet (Charles et al. 2020b), and mungbean (Charles et al. 2020a) were combined in the present study to test whether a multispecies CPWC model could be fit to the combined data set. Linear regression was used to test the association between relative cotton-lint yield and experimental year; weed species, density, biomass, and height; time of emergence; and time of removal. The data were combined over years because experimental year was not a significant factor in the regression. The combined data set was used to develop new multispecies CTWR and CWFP models. The fit of these multispecies models was tested over the three weed species by using the functions to generate predicted lint-yield reductions for each species and contrasting the predicted to the observed yield reductions. A simple linear model was fit to this contrast of predicted and observed yield reductions for each species and 95% confidence intervals of the lines were generated. The fitted lines for each species were compared with a line generated for the combined data set and the overlap of the confidence intervals was examined.

Results and Discussion

Developing Dynamic Models for the Mimic Weed Common Sunflower

A dynamic relationship was developed by Charles et al. (2019b) to define the CPWC for common sunflower, a large mimic weed, in high-yielding cotton, using weed density and the duration of weed competition as descriptive elements in the models. However, more

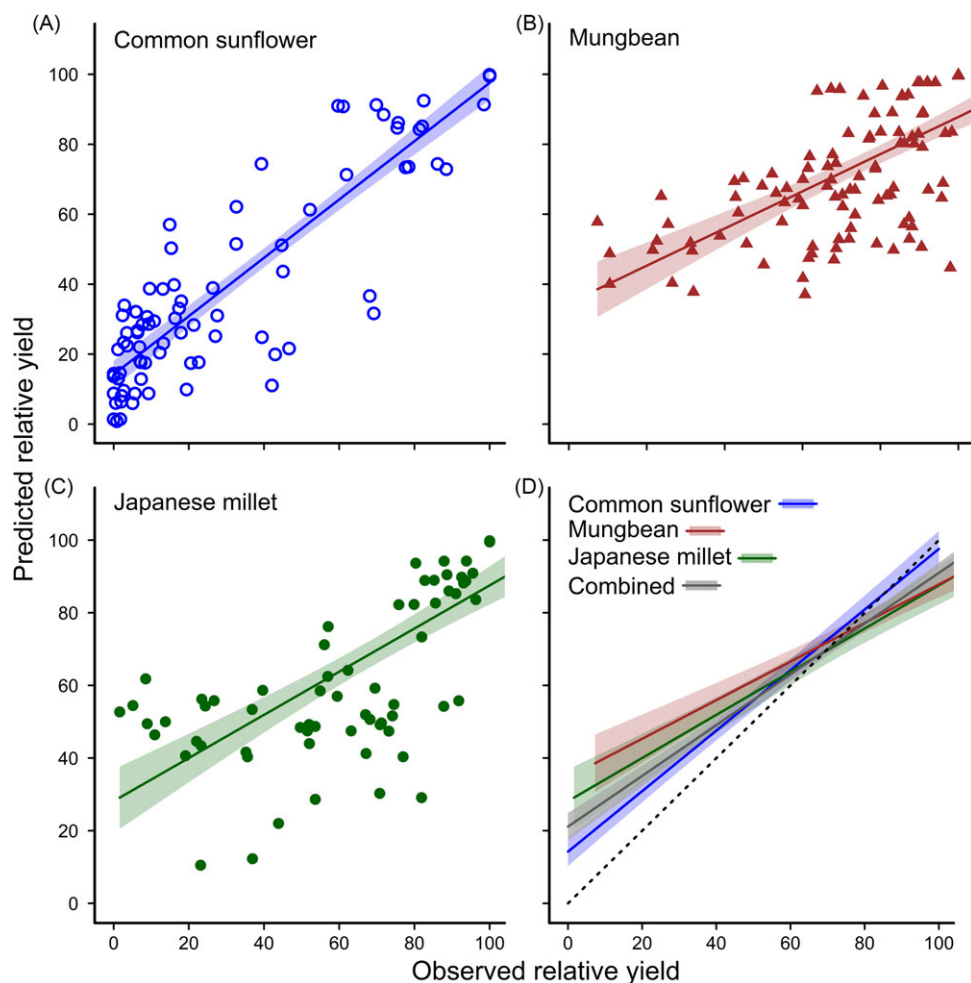


Figure 7. Estimated linear relationships and 95% confidence intervals for observed and predicted relative crop yield using the multispecies critical weed-free period model for (A) common sunflower, (B) mungbean, and (C) Japanese millet. The relationship (D) for the combined data set and each species is shown against a 1:1 line. Data points for the relationships are treatment means.

recent research using mungbean, a smaller broadleaf mimic weed, found that the relationships could be improved by substituting weed biomass (kg m^{-2}) for weed density (plants m^{-2} ; Charles et al. 2020a). Charles et al. (2020a) also tested weed height and combinations of weed density, height, and biomass as factors, but found the best fit with weed biomass. Weed biomass and weed height had previously been shown to be correlated to cotton-lint yield (Askew and Wilcut 2001, 2002a, 2002b; Charles et al. 2019a; Cortés et al. 2010; Fast et al. 2009).

Using the data published by Charles et al. (2019b), we tested the relationships between relative cotton-lint yield and weed (common sunflower) biomass, height, and density. There were strong associations between the relative lint yield and weed biomass ($r^2 = 0.69$), and height ($r^2 = 0.68$), with weed biomass being the stronger relationship (Figure 1), but no apparent relationship with weed density ($r^2 = 0.02$).

We tested the fit of weed density, height, and biomass on the dynamic relationships defining the CPWC for common sunflower using the data published by Charles et al. (2019b) and found the fit of both the CTWR and CWFP relationships was most improved by substituting weed biomass for weed density (Figure 2). The CPWC defined by these curves extended from 21 GDD to 1,244 GDD for 10 g weed m^{-2} when a 1% weed control threshold was applied, and for the full

season (2 GDD to picking) with 2.5 kg weed m^{-2} , the maximum dry aboveground biomass of common sunflower reported by Charles et al. (2019b). Our model shows that the presence of 1.09 kg m^{-2} or more of weeds at any stage during the season (4 GDD to 1,600 GDD) reduced the cotton-lint yield by more than the 1% threshold.

This model, based on weed biomass, is both a statistical and practical improvement over the original CPWC model based on weed density (Charles et al. 2019b) because it includes a measure of weed size (biomass), allowing for variation in the size and the growth rate of the weeds, and allowing for the possibility that the model might be more widely applied to a range of weed species and types, with similar morphologic traits. This possibility of developing a multispecies competition model was proposed by Charles et al. (2019a), who developed a simple model relating cotton-lint yield loss to a combination of weed height and weed biomass for three very different mimic weed species: common sunflower; mungbean; and Japanese millet.

Developing Dynamic Models for the Mimic Grass Weed Japanese Millet

A dynamic relationship defining the critical period for weed control for Japanese millet, a mimic grass weed, in high-yielding cotton

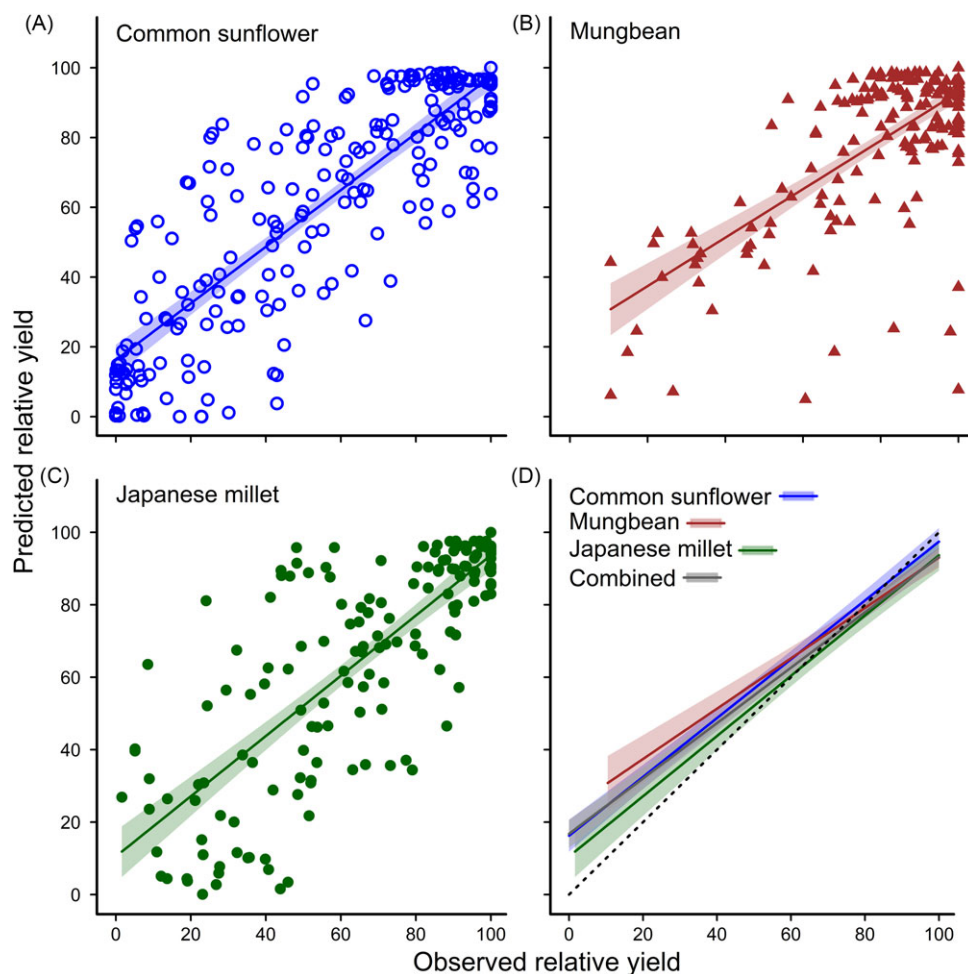


Figure 8. Estimated linear relationships and 95% confidence intervals for observed and predicted relative crop yield using the multispecies critical time for weed removal model for (A) common sunflower, (B) mungbean, and (C) Japanese millet. The relationship (D) for the combined data set and each species is shown against a 1:1 line. Data points for the relationships are treatment means.

was developed by Charles et al. (2020b) using weed density and the duration of weed competition as descriptors in the models. Using these data, we tested the relationships between the relative lint yield and weed biomass, height, and density, with the data averaged over the remaining factors. The results mirrored the earlier findings with common sunflower, with lint yield associated with weed biomass ($r^2 = 0.46$) and weed height ($r^2 = 0.4$; Figure 3), but poorly related to weed density ($r^2 = 0.04$).

We tested the fit of weed density, biomass, and height on the CPWC relationships for Japanese millet published by Charles et al. (2020b) and found an improvement in the fit of the CTWR when weed biomass was substituted for weed density, but no improvement in the CWF model with any combination of weed density, biomass, or height (Figure 4). Charles et al. (2020a) similarly reported that the CTWR relationship for mungbean was improved when weed biomass was substituted for weed density in the relationship, but that the CWF model was not improved by substituting either weed biomass or weed height into the relationship. The CPWC defined for Japanese millet using the new CTWR curve begins earlier in the season than the original CPWC (Charles et al. 2020b), beginning at 26 GDD with 10 g weed m^{-2} and 8 GDD with 2 kg weed m^{-2} . There was no substantial change in the points of minimum yield loss with the new model.

Developing Dynamic Models Using the Combined Data Sets for Three Mimic Weeds

To test the possibility of developing a multispecies competition model for irrigated cotton, we combined the data sets for the mimic weeds common sunflower (Charles et al. 2019b), Japanese millet (Charles et al. 2020b), and mungbean (Charles et al. 2020a). We tested the associations between relative cotton-lint yield and experimental year; and weed species, density, biomass, height, time of emergence, and time of removal. Experimental year was not a significant factor in the regression, but all other factors were significantly associated with lint yield. Weed density and weed species, however, were only weakly related to relative yield ($r^2 = 0.003$ and $r^2 = 0.04$, respectively).

The relative lint yield of cotton was most strongly associated with weed height ($r^2 = 0.59$) and weed biomass ($r^2 = 0.38$), with the times of weed emergence and weed removal less strongly related, $r^2 = 0.09$ and $r^2 = 0.15$, respectively. The relationship improved when the times of weed emergence and weed removal were both included in the regression ($r^2 = 0.33$). The correlations of lint yield with weed height and biomass, and the times of weed emergence and removal, were further improved by using exponential (weed height and biomass; Figure 5), and Gompertz functions (times of weed emergence and removal).

Using the combined data set, we developed new CTWR and CWFP relationships with weed density, biomass, and height as factors separately and in combination. The best fit for both relationships occurred when weed height and biomass were included as factors by developing a multispecies CPWC model (Figure 6) in line with the findings of Charles et al. (2019a) who also related relative lint yield to weed height and biomass. The CPWC derived from the multispecies models extended from 49 to 1,187 GDD for weeds 1 cm tall and weighing 10 g m^{-2} , and for the full season (3 GDD to picking) with weeds that were 2 m tall and 2 kg m^{-2} biomass. The presence of weeds that were 85 cm tall and of 850 g m^{-2} biomass or more reduced the cotton-lint yield at any stage in the season (to 1,600 GDD) by more than the 1% yield-loss threshold. The reduction in cotton-lint yield below the 1% yield-loss threshold was similarly caused by weeds of any height (1 cm or more) where weed biomass exceeded $2,010 \text{ g m}^{-2}$, or any biomass (10 g m^{-2} or more) where weed height exceeded 145 cm.

We tested the fit of the CWFP model by comparing observed and predicted yield reductions for each species against the combined data set. The 95% confidence intervals for common sunflower and Japanese millet overlap the confidence interval for the combined data set throughout its length, indicating that the multispecies model reasonably predicts the yield loss of these two very different mimic weeds: a large broadleaf weed and a much smaller grass weed (Figure 7). The confidence interval for the combined data set overlaps the confidence interval for mungbean for relative yields of 40% or more. The multispecies model overestimates the yield loss from competition from mungbean below 40% relative yield, although the difference between the two confidence intervals was very small, and increased to 1% of relative yield at the lowest observed yield of 7%. We also note that the multispecies CWFP model underestimates all yield losses below 71% relative yield (the relationship is above the 1:1 line) and overestimates yield losses at higher yields. This inaccuracy appears to be caused by the nature of the model used. Future work should explore alternative mathematical relationships to correct this issue with our model. Nevertheless, we contend that the multispecies CWFP model reasonably represents the competition relationships of these very different mimic weeds.

We similarly tested the fit of the CTWR model by comparing observed and predicted yield reductions for each species against the combined data set. The 95% confidence interval for the combined data set overlapped the confidence intervals for all three mimic weeds throughout their length, indicating that the multispecies model reasonably predicted the yield loss of these weeds (Figure 8). Again, we note that the multispecies CTWR model underestimates yield losses below 68% relative yield (the relationship is above the 1:1 line) and overestimates yield losses at higher yields. Correcting this inaccuracy should be an aim of future work.

Further Development of a Multispecies Model

A multispecies CPWC model will be a valuable tool for developing IWM systems in irrigated cotton, enabling Australian cotton growers to optimize their weed control inputs (Knezevic and Datta 2015). The multispecies model developed in this study was generated from data from three very dissimilar mimic weed types and so should be applicable to many of the weed species commonly found in cotton in Australia (Charles et al. 2019a, 2020a; Werth et al. 2013). In addition, the model uses growing degree days as the unit of time and weed biomass and height as measures of weed size (Knezevic and Datta 2015). We expect our model, which

includes all these factors, will be widely applicable to cotton production in Australia, and we will be testing this expectation in future studies.

Nevertheless, the model has been developed using artificial “mimic” weeds, sown in single rows offset from the crop row, in a single location, and has not been tested against prostrate weeds, naturally occurring weed populations, staggered germinations, or within the more typical cotton production system of successive weed germinations and multiple control events. Future work should test the multispecies CPWC model against naturally occurring weeds in a more typical production system, and in other cotton-producing areas in Australia, to ensure the model is applicable to the real situation of weeds and cotton over the diversity of the production area.

Acknowledgments. This work was supported by the New South Wales Department of Primary Industries, University of New England, Cotton Research and Development Corporation, and Australian Cotton Cooperative Research Centre. We thank the many support staff who contributed to the field work and the reviewers of the paper. No conflicts of interest have been declared.

References

- Askew SD, Wilcut JW (2001) Tropic croton interference in cotton. *Weed Sci* 49:184–189
- Askew SD, Wilcut JW (2002a) Ladysthumb interference and seed production in cotton. *Weed Sci* 50:326–332
- Askew SD, Wilcut JW (2002b) Pale smartweed interference and achene production in cotton. *Weed Sci* 50:357–363
- Buchanan GA, Crowley RH, McLaughlin RD (1977) Competition of prickly sida with cotton. *Weed Sci* 25:106–110
- Bukun B (2004) Critical periods for weed control in cotton in Turkey. *Weed Res* 44:404–412
- Charles GW, Sindel BM, Cowie AL, Knox OG (2019a) The value of using mimic weeds in competition experiments in irrigated cotton. *Weed Technol* 33:601–609
- Charles GW, Sindel BM, Cowie AL, Knox OG (2019b) Determining the critical period for weed control in high-yielding cotton using common sunflower as a mimic weed. *Weed Technol* 33:800–807
- Charles GW, Sindel BM, Cowie AL, Knox OG (2020a) Determining the critical period for broadleaf weed control in high-yielding cotton using mungbean as a mimic weed. *Weed Technol* [published online ahead of print April 2, 2020]. *Weed Technol* 10.1017/wet.2020.38
- Charles GW, Sindel BM, Cowie AL, Knox OG (2020b) Determining the critical period for grass control in high-yielding cotton using Japanese millet as a mimic weed. *Weed Technol* 34:292–300
- Cortés JA, Mendiola MA, Castejón M (2010) Competition of velvetleaf (*Abutilon theophrasti* M.) weed with cotton (*Gossypium hirsutum* L.). Economic damage threshold. *Span J Agric Res* 8:391–399
- Fast BJ, Murdock SW, Farris RL, Willis JB, Murray DS (2009) Critical timing of Palmer amaranth (*Amaranthus palmeri*) removal in second-generation glyphosate-resistant cotton. *J Cotton Sci* 13:32–36
- Grundy P (2019) Management of key insect and mite pests. Pages 12–48 in Maas S, Redfern R, eds. *Cotton Pest Management Guide 2019–20*. Narrabri, NSW Australia: Cotton Research and Development Corporation
- Hearn AB, Bange MP (2002) SIRATAC and CottonLOGIC: persevering with DSSs in the Australian cotton industry. *Agric Syst* 74:27–56
- Knezevic SZ, Datta A (2015) The critical period for weed control: revisiting data analysis. *Weed Sci* 63:188–202
- Knezevic SZ, Evans SP, Blankenship ER, Van Acker RC, Lindquist JL (2002) Critical period for weed control: the concept and data analysis. *Weed Sci* 50:773–786
- Koetz E (2019a) Herbicide resistance management in Australian cotton farming systems. Pages 83–87 in Maas S, Redfern R, eds. *Cotton Pest Management Guide 2019–20*. Narrabri, NSW Australia: Cotton Research and Development Corporation

- Koetz E (2019b) Weed management tactics. Pages 92–97 in Maas S, Redfern R, eds. Cotton Pest Management Guide 2019–20. Narrabri, NSW Australia: Cotton Research and Development Corporation
- Korres NE, Norsworthy JK (2015) Influence of a rye cover crop on the critical period for weed control in cotton. *Weed Sci* 63:346–352
- Ma X, Yang J, Wu H, Jiang W, Ma Y, Ma Y (2016) Growth analysis of cotton in competition with velvetleaf (*Abutilon theophrasti*). *Weed Technol* 30:123–136
- Robinson EL (1976) Yield and height of cotton as affected by weed density and nitrogen level. *Weed Sci* 24:40–42
- Scott H, Askew SD, Wilcut JW, Brownie C (2000) *Datura stramonium* interference and seed rain in *Gossypium hirsutum*. *Weed Sci* 48:613–617
- Taylor I, Charles G, Inchbold B (2004) Reducing residual pre-emergent or pre-plant herbicide use in cotton through the development of weed thresholds. Pages 835–845 in Swanepoel A, ed. Proceedings of the World Cotton Research Conference – 3. Cape Town South Africa: Agricultural Research Council – Institute for Industrial Crops
- Tingle CH, Steele GL, Chandler JM (2003) Competition and control of smell-melon (*Cucumis melo* var. *dudaim* Naud.) in cotton. *Weed Sci* 51:586–591
- Tursun N, Datta A, Budak S, Kantarci Z, Knezevic SZ (2016) Row spacing impacts the critical period for weed control in cotton (*Gossypium hirsutum*) *Phytoparasitica* 44:139–149
- Tursun N, Datta A, Tuncel E, Kantarci Z, Knezevic S (2015) Nitrogen application influences the critical period for weed control of cotton. *Crop Prot* 74:85–91
- Vencill WK, Giraud LJ, Langdale GW (1993) Soil moisture relations and critical period of *Cynodon dactylon* (L.) Pers. (coastal bermudagrass) competition in conservation-tillage cotton (*Gossypium hirsutum* L.). *Weed Res* 33:89–96
- Webster TM, Davis RF (2007) Southern root-knot nematode (*Meloidogyne incognita*) affects common cocklebur (*Xanthium strumarium*) interference in cotton. *Weed Sci* 55:143–146
- Webster TM, Grey TL, Flanders JT, Culpepper AS (2009) Cotton planting date affects the critical period of Benghal dayflower (*Commelina benghalensis*) control. *Weed Sci* 57:81–86
- Werth J, Boucher L, Thornby D, Walker S, Charles G (2013) Changes in weed species since the introduction of glyphosate-resistant cotton. *Crop Pasture Sci* 64:791–798