

Giant Ragweed (*Ambrosia trifida*) Emergence Model Performance Evaluated in Diverse Cropping Systems

Authors: Goplen, Jared J., Sheaffer, Craig C., Becker, Roger L., Moon, Roger D., Coulter, Jeffrey A., et al.

Source: Weed Science, 66(1) : 36-46

Published By: Weed Science Society of America

URL: <https://doi.org/10.1017/wsc.2017.38>

BioOne Complete (complete.BioOne.org) is a full-text database of 200 subscribed and open-access titles in the biological, ecological, and environmental sciences published by nonprofit societies, associations, museums, institutions, and presses.

Your use of this PDF, the BioOne Complete website, and all posted and associated content indicates your acceptance of BioOne's Terms of Use, available at www.bioone.org/terms-of-use.

Usage of BioOne Complete content is strictly limited to personal, educational, and non - commercial use. Commercial inquiries or rights and permissions requests should be directed to the individual publisher as copyright holder.

BioOne sees sustainable scholarly publishing as an inherently collaborative enterprise connecting authors, nonprofit publishers, academic institutions, research libraries, and research funders in the common goal of maximizing access to critical research.

Giant Ragweed (*Ambrosia trifida*) Emergence Model Performance Evaluated in Diverse Cropping Systems

Jared J. Goplen, Craig C. Sheaffer, Roger L. Becker, Roger D. Moon, Jeffrey A. Coulter, Fritz R. Breitenbach, Lisa M. Behnken, and Jeffrey L. Gunsolus*

Accurate weed emergence models are valuable tools for scheduling planting, cultivation, and herbicide applications. Multiple models predicting giant ragweed emergence have been developed, but none have been validated in diverse crop rotation and tillage systems, which have the potential to influence weed emergence patterns. This study evaluated the performance of published giant ragweed emergence models across various crop rotations and spring tillage dates in southern Minnesota. Across experiments, the most robust model was a mixed-effects Weibull (flexible sigmoidal function) model predicting emergence in relation to hydrothermal time accumulation with a base temperature of 4.4 C, a base soil matric potential of -2.5 MPa, and two random effects determined by overwinter growing degree days (GDD) (10 C) and precipitation accumulated during seedling recruitment. The deviations in emergence between individual plots and the fixed-effects model were distinguished by the positive association between the lower horizontal asymptote (Drop) and maximum daily soil temperature during seedling recruitment. This finding indicates that crops and management practices that increase soil temperature will have a shorter lag phase at the start of giant ragweed emergence compared with practices promoting cool soil temperatures. Thus, crops with early-season crop canopies such as perennial crops and crops planted in early spring and in narrow rows will likely have a slower progression of giant ragweed emergence. This research provides a valuable assessment of published giant ragweed emergence models and illustrates that accurate emergence models can be used to time field operations and improve giant ragweed control across diverse cropping systems.

Nomenclature: Giant ragweed, *Ambrosia trifida* L. AMBTR.

Key words: Soil temperature, weed ecology, weed emergence models, weed emergence phenology.

Planting dates, cultivation schedules, and herbicide application timing can improve weed control by being scheduled when weeds are most vulnerable (Menalled and Schonbeck 2013). For example, spring preplant tillage or POST herbicide applications are more efficient when the number of emerged weeds is maximized but weed size is small. If tillage or herbicide is applied too early, only a small percentage of weeds will have emerged, whereas if either occurs too late, weeds may be too large to be vulnerable (Carey and Kells 1995; Gunsolus 1990). Accurate weed

emergence models provide a tool to optimize the timing of field operations to obtain maximum weed control (Anderson 1994; Forcella et al. 1993). Weed emergence models can also improve our understanding of abiotic factors influencing seed biology and dormancy release. For example, emergence modeling studies have provided evidence that giant ragweed seed dormancy is related to cold, moist conditions during the overwinter period, supporting previous research (Davis et al. 2013; Schutte et al. 2012).

Giant ragweed is one of the most competitive agricultural weeds in the midwestern United States row-crop production and has developed resistance to glyphosate and acetolactate synthase (ALS)-inhibitor herbicides (Heap 2016; Webster et al. 1994). With limited herbicide options effective for giant ragweed, proper herbicide application and mechanical weed control timing is critical for maximizing weed control efficacy (Buhler et al. 1997). Giant ragweed has been one of the earliest emerging agricultural weeds in the midwestern United States, often exhibiting a single early-season flush of emergence in early spring, with

DOI: 10.1017/wsc.2017.38

* First, second, third, fifth, and eighth authors: Graduate Student, Professor, Professor, Professor, Associate Professor, and Professor, Department of Agronomy and Plant Genetics, University of Minnesota, 1991 Upper Buford Circle, St Paul, MN 55108; fourth author: Professor, Department of Entomology, University of Minnesota, 1980 Folwell Avenue, St Paul, MN 55108; sixth and seventh authors: Extension Educator and Integrated Pest Management Specialist, University of Minnesota, 863 30th Avenue SE, Rochester, MN 55904. Corresponding author's E-mail: gople007@umn.edu

90% emergence occurring by early June (Buhler et al. 1997; Goplen et al. 2017; Werle et al. 2014), although some populations have developed a delayed, biphasic emergence pattern (Schutte et al. 2008). Using tillage to control early-emerging weeds not only reduces reliance on herbicides but also reduces weed population densities and allows POST herbicide applications to be made to smaller weeds, making them more effective (Sellers et al. 2009).

There are four publications predicting the timing of giant ragweed emergence based on concurrent weather and soil characteristics (Archer et al. 2006; Davis et al. 2013; Schutte et al. 2008; Werle et al. 2014). All models base predictions on thermal time accumulation (either growing degree days [GDD] or hydrothermal time [HTT]) but use different soil temperature and moisture criteria for thermal time accumulation (Table 1). All models but Archer et al. (2006) have used the soil temperature and moisture model (STM²) (Spokas and Forcella 2009) to predict soil temperature and moisture, although predictions were from different soil depths. The STM² uses site-specific soil information, daily precipitation, and minimum and maximum air temperatures from a nearby weather station to predict soil temperature. Although the STM² model can be highly accurate, it does not account for soil shading as crop canopies develop (Perreault et al. 2013; Schutte et al. 2008).

For this analysis, 11 models were derived from four publications predicting giant ragweed emergence (Table 1). The single fixed-effect model from Archer et al. (2006) predicts giant ragweed emergence with HTT using the Gompertz function:

$$Y = 100 * \exp[-6 * \exp(-0.02 * \text{HTT})] \quad [1]$$

where Y is cumulative percent emergence and HTT is the predictor variable. All other published models use the Weibull function to predict giant ragweed emergence. The models from Schutte et al. (2008) and Werle et al. (2014) include only fixed effects:

$$Y = M * \{1 - \exp[-(-\exp(\text{lrc})) * (\text{GDD or HTT} - z)^\epsilon]\} \quad [2]$$

where Y is cumulative percent emergence, M is the upper horizontal asymptote, lrc is the natural log of the rate of increase, GDD or HTT is the predictor variable, z is the time of first emergence, and ϵ is the curve shape parameter. The fixed-effects models have model parameters that are fixed across all locations, years, and changing weather conditions, with model parameters presented in Table 1. Davis et al. (2013) included an additional fixed effect for

Table 1. Published models predicting the emergence pattern of giant ragweed as cumulative percent emergence.^a

Citation	Model no.	Model details	Prediction variable	GDD base (C)	HTT base (MPa)	Soil data (depth)	Equation type	Weibull model parameters				
								M	Z	ϵ	lrc	Drop
Archer et al. (2006)	1	Fixed	HTT	4.4	-0.15	(5 cm)	Gompertz	—	—	—	—	—
Davis et al. (2013)	2,4,5,6,7,8 ^b	Mixed (arable)	HTT	4.4	-2.5	(2 cm) STM ²	Weibull	99.8	—	2	-12.7 ^c	105.7 ^c
Davis et al. (2013)	3	Mixed (riparian)	HTT	4.4	-2.5	(2 cm) STM ²	Weibull	99.8	—	1.38	-6.2 ^c	105.7 ^c
Schutte et al. (2008)	9	Fixed (prelag)	HTT	2.0	-10	(1 cm) STM ²	Weibull	60	60	1.6	-8.2	—
Schutte et al. (2008)	9	Fixed (postlag)	HTT	2.0	-30	(1 cm) STM ²	Weibull	40	600	1.23	-7.4	—
Werle et al. (2014)	10	Fixed (common)	GDD	9.0	—	(2 cm) STM ²	Weibull	100	0	1.6573	-7.0	—
Werle et al. (2014)	11	Fixed (best)	GDD	13.0	—	(2 cm) STM ²	Weibull	100	0	1.2593	-3.5	—

^a Abbreviations: ϵ , curve shape parameter; drop, lower horizontal asymptote relative to upper asymptote; GDD, growing degree days; HTT, hydrothermal time; lrc , natural log of the rate of increase; M , upper horizontal asymptote; STM², soil temperature and moisture model (Spokas and Forcella 2009); z , HTT of first emergence.

^b Models include the same fixed effects but different random effects for lrc and/or Drop determined by weather variables.

^c Indicates model also includes random effects for the given parameter determined by weather variables.

a lower horizontal asymptote (Drop) to the Weibull function, as in Equation 3:

$$Y = M - (\text{Drop} + \text{drop}) * \exp[(-\exp(\text{lrc} + \text{lrc})) * (\text{HTT})^c] \quad [3]$$

as well as random effects for *drop* and *lrc*, which were determined by their published associations with weather variables and were different for each site-year (Equation 3). The terms for *drop* included by Davis et al. (2013) determine how much lower the lower horizontal asymptote is relative to the upper horizontal asymptote, which had a fixed value of 99.8 for all models derived from Davis et al. (2013) (Table 1). In Equation 3, Drop and *drop* are the fixed and random effects, respectively, for the lower horizontal asymptote relative to the upper asymptote, and *lrc* and *lrc* are the fixed and random effects, respectively, for the natural log of the rate of increase. Fixed-effect parameters for all models are presented in Table 1, while random-effect parameters were estimated from their associations with weather variables found in Davis et al. (2013).

The model from Schutte et al. (2008) was a two-part model, with a pre- and post-lag phase component based on the Weibull function, designed to predict emergence of giant ragweed with a biphasic emergence pattern like the populations found in Ohio. Both phases of this model had an HTT predictor variable but different base soil matric potential and model parameters for each phase (Table 1). Werle et al. (2014) presented two models, one of which was the best giant ragweed emergence model in their study and another which was a common model among other weed species evaluated in their study. Both models from Werle et al. (2014)

were fixed-effects Weibull functions with GDD predictor variables but with different base temperatures for GDD calculation and different model parameters (Table 1).

The models from Davis et al. (2013) included two mixed-effects Weibull functions with an HTT predictor variable designed for either arable or riparian accessions of giant ragweed. Each model had different fixed-effect parameters for *lrc* and *c* but the same fixed-effect parameters for *M* and Drop. In addition to the fixed effects, these models included random effects for *lrc* and *drop*. Davis et al. (2013) found that overwinter GDD (10 C) and rainfall during seedling recruitment were both negatively associated with the random effect *lrc* and that rainfall during seedling recruitment was negatively associated with the random effect *drop*. Davis et al. (2013) concluded that these weather variables are what influenced deviations from the fixed-effects-only models, and therefore can be used to improve model predictions in years or locations with differing weather conditions. The associations found by Davis et al. (2013) between weather variables and random effects for *lrc* and *drop* were used to predict the random-effect parameters for each site-year of this study, which is how Models 4 to 8 were derived in Table 2. All giant ragweed populations in our study were from arable accessions, so arable accession Model 2 was used as a basis for the mixed-effects Models 4 to 8 (Tables 1 and 2). Models 4 to 8 had the same fixed effects as arable accession Model 2 but different random effects for each site-year that were predicted from Davis et al. (2013).

Table 2. Summary of model performance criteria ordered by model performance across experiments and site-years (*n* = 1,586).^a

Model no.	Model	GDD base Temperature —C—	HTT base moisture —MPa—	Random effects	AICc	<i>w_i</i>	RMSE	<i>r</i>	<i>A</i>	CCC
8	Davis arable	4.4	−2.5	W <i>lrc</i> + P <i>drop</i>	−5,445	>0.999	0.18	0.87	0.97	0.85
5	Davis arable	4.4	−2.5	W <i>lrc</i>	−5,383	<0.001	0.18	0.87	0.98	0.85
6	Davis arable	4.4	−2.5	P <i>drop</i>	−4,869	<0.001	0.21	0.88	0.94	0.82
2	Davis arable	4.4	−2.5		−4,806	<0.001	0.22	0.87	0.94	0.82
9	Schutte	2.0	−10/−30		−4,447	<0.001	0.25	0.81	0.63	0.51
7	Davis arable	4.4	−2.5	P <i>lrc</i> + P <i>drop</i>	−3,731	<0.001	0.31	0.76	0.89	0.68
4	Davis arable	4.4	−2.5	P <i>lrc</i>	−3,566	<0.001	0.32	0.74	0.89	0.66
10	Werle	9.0	—		−2,919	<0.001	0.40	0.60	0.18	0.12
11	Werle	13	—		−2,706	<0.001	0.43	0.46	0.27	0.13
1	Archer	4.4	−0.15		−2,680	<0.001	0.43	0.61	−0.01	−0.01
3	Davis riparian	4.4	−2.5		−2,543	<0.001	0.45	0.61	−0.15	−0.09

^a Abbreviations: *A*, measure of accuracy; AICc, corrected Akaike’s information criterion; *w_i*, Akaike weight; CCC, concordance correlation coefficient (product of *r* and *A*); GDD, growing degree days; HTT, hydrothermal time; P *drop*, *drop* determined by precipitation during recruitment; P *lrc*, natural log of the rate of increase determined by precipitation during recruitment; *r*, Pearson’s correlation coefficient; RMSE, root mean square error; W *lrc*, natural log of the rate of increase determined by winter GDD (10 C) from October to March.

Davis et al. (2013) and Schutte et al. (2008) developed giant ragweed emergence models by evaluating giant ragweed emergence with no surrounding vegetation, while Werle et al. (2014) developed emergence models in an experiment planted to soybean [*Glycine max* (L.) Merr.] that achieved a crop canopy after the majority of giant ragweed emergence had occurred. Although Schutte et al. (2008) validated their model in both no-tillage and tilled conditions, the type of crop, crop residue, and tillage influences the soil environment, which can alter giant ragweed emergence. Since all published emergence models were constructed in either fallow or annual row-crop systems, it is likely that model performance, or how closely a model predicts actual giant ragweed emergence, will decrease in perennial crops or crops planted early in the season and in narrow rows, because they affect early-season soil temperature and moisture (Liebman and Dyck 1993). Giant ragweed emergence has been shown to be prolonged with less total seedling recruitment in established alfalfa (*Medicago sativa* L.), which was attributed to lower soil temperatures being less conducive to giant ragweed recruitment (Goplen et al. 2017; Wortman et al. 2012). It is important to validate the applicability of giant ragweed emergence models in diverse cropping systems to identify reliable models for timing field operations. The objectives of this research were to evaluate the performance of published giant ragweed emergence models across contrasting cropping systems, and determine biotic or abiotic factors associated with deviations in emergence model predictions.

Materials and Methods

Crop Rotation Experiments. Two field experiments were initiated in 2012 and 2013 at separate sites with naturally occurring giant ragweed resistant to glyphosate and ALS-inhibitor herbicides near Rochester, MN (43.91°N, 92.56°W). Crop management details are outlined in Goplen et al. (2017) and consisted of six 3-yr crop rotation treatments applied in a randomized complete block design with four replications. Crops in the rotations were corn (*Zea mays* L.), soybean, wheat (*Triticum aestivum* L.), and alfalfa. Rotations were continuous corn, soybean–corn–corn, corn–soybean–corn, soybean–wheat–corn, soybean–alfalfa–corn, and alfalfa–alfalfa–corn. Giant ragweed emergence was monitored on a weekly basis with emergence data from a total of 120 experimental units over 3 yr being used for emergence model analysis, as weekly emergence data were not collected in 2012.

Tillage Experiments. Two additional field experiments were conducted in 2015 near Rochester, MN (43.91°N, 92.56°W) and at the University of Minnesota Rosemount Research and Outreach Center near Rosemount, MN (44.70°N, 93.08°W) (Goplen 2017). Both sites had naturally occurring giant ragweed resistant to glyphosate, and at Rochester, MN, giant ragweed was also resistant to ALS-inhibitor herbicides. Each experiment had six tillage treatments arranged in a randomized complete block design with four replications. The tillage treatments included multiple dates of spring tillage timed relative to the initiation of giant ragweed emergence. Treatments included tillage with a field cultivator at a depth of 10 cm at emergence onset; at 14, 28, and 42 d after emergence onset; at emergence onset and repeated at 28 d after onset; and no tillage. At Rochester, MN, two replications were in oat stubble that had no fall tillage, and the other two replications were in fall chisel-plowed corn stubble. At Rosemount, MN, all replications took place in fall chisel-plowed soybean stubble. Plots at Rosemount, MN, were 3 by 6 m, and plots at Rochester, MN were 3.7 by 6 m to accommodate equipment size. Ten 0.09-m² quadrats were placed in each plot. Giant ragweed emergence was monitored by counting and removing emerged seedlings in each quadrat on a weekly basis, starting at emergence onset and continuing for at least 10 wk or until emergence ceased. All emergence data were converted to a cumulative percentage of giant ragweed that emerged each week. These tillage timing experiments contributed data from 48 experimental units for analysis of giant ragweed emergence models.

Environmental Effects. Daily precipitation and minimum and maximum air temperatures were obtained from the National Weather Service station within 5 km of each study location. Weather data from each weather station were used to predict daily soil temperature (C) and moisture (MPa) at 1-, 2-, and 5-cm depths using STM² (Spokas and Forcella 2009). The STM² predictions were based on daily maximum and minimum air temperature, daily precipitation, soil properties (sand, silt, clay, and organic matter), latitude, longitude, and elevation.

Thermal time for each giant ragweed emergence model was calculated using the method specified in the respective publication. All emergence models calculated GDD as:

$$\text{GDD} = \sum_{S1}^{S2} \frac{(T_{\max} + T_{\min})}{2} - T_b \quad [4]$$

where T_{\max} is maximum daily soil temperature, T_{\min} is minimum daily soil temperature, T_b is base temperature for GDD calculation presented in Table 1, and S_1 and S_2 are beginning and ending dates for the specific model, respectively. For models using hydrothermal time (HTT) to predict emergence, HTT was calculated as:

$$\text{HTT} = \sum_{S_1}^{S_2} \theta_H \text{GDD} \quad [5]$$

where GDD were calculated according to Equation 4, $\theta_H = 1$ when soil matric potential was in the model's designated interval, and $\theta_H = 0$ when soil matric potential was not in the model's designated interval (Table 1). Therefore, thermal time was only accumulated when soil moisture was in the designated interval. Soil temperature at the 5-cm depth was recorded hourly in plots from all experiments using temperature sensors (Hobo® Water Temp Pro v2, Bourne, MA). Soil temperature data from temperature sensors were used to evaluate STM² accuracy and explore deviations from emergence predictions in crop rotation and tillage timing treatments.

Statistical Analysis. Measures of model performance in our study were based on comparison between observed and predicted values for cumulative percent emergence of giant ragweed across the entire seedling recruitment period. Corrected Akaike's information criterion (AICc) was used to evaluate competing giant ragweed emergence models across experiments. This criterion includes a correction for sample size and is recommended in practice over traditional AIC (Anderson 2008; Hurvich and Tsai 1989; Sugiura 1978). It is based on the minimization of maximum-likelihood criterion and is calculated as:

$$\text{AICc} = -2\log(\mathcal{L}(\hat{\theta})|x) + \frac{2K(K+1)}{n-K-1} \quad [6]$$

where the first term involves the log-likelihood of the model, given the data, while the second term penalizes a model for K additional parameters and sample size of n . Models with lower values of AICc indicate they better represent reality given the data. Akaike weights (w_i) were calculated from the AICc values for the 11 models to determine the probability that a given model is the best descriptor of reality among the candidate models. Akaike weights were calculated as:

$$w_i = \frac{e^{-1/2\Delta_i}}{\sum_{r=1}^R e^{-1/2\Delta_r}} \quad [7]$$

where Δ_i is the AICc difference between the top model and the i th alternative, and R is the number of

candidate models (Anderson 2008; Burnham and Anderson 2002; Hoeting et al. 1999). Akaike weights (w_i) closer to 1 indicate stronger support for a candidate model given the data. This methodology has been used in previous giant ragweed emergence modeling studies to select the best-fitting predictive model while minimizing the number of parameters (Davis et al. 2013; Werle et al. 2014).

Since AICc will rank models even if none perform well, it is recommended that additional performance criteria be used (Anderson 2008; Kobayashi and Salam 2000; Legates and McCabe 1999; Meek et al. 2009; Tedeschi 2006). Following earlier methods (Schutte et al. 2008; Werle et al. 2014), goodness of fit for each model was analyzed using root mean square error (RMSE) and the concordance correlation coefficient (CCC) to provide measures of giant ragweed emergence model precision and accuracy. The RMSE was calculated to estimate model prediction accuracy and is recommended when using AICc model selection methods (Anderson 2008; Legates and McCabe 1999; Tedeschi 2006). The RMSE is calculated as:

$$\text{RMSE} = \sqrt{\frac{\sum_{i=1}^n (O_i - P_i)^2}{n}} \quad [8]$$

where O_i and P_i are the observed and predicted values of the cumulative percentage of giant ragweed emerged, respectively, and n is the number of comparisons. The CCC was calculated as an additional model performance measure, since it provides a measure of precision and accuracy (Mitchell 1997). The CCC is:

$$\text{CCC} = rA \quad [9]$$

which is the product of Pearson's correlation coefficient (r) and accuracy (A). Accuracy (A) is a bias correction factor calculated as:

$$A = \frac{4s_x s_y - r(s_y^2 + s_x^2)}{(2 - r)(s_y^2 + s_x^2) + (\mu_y - \mu_x)^2} \quad [10]$$

where s_x is mean deviation x from μ_x , s_y is mean deviation y from μ_y , μ_y is the mean of the observed values, and μ_x is the mean of the model prediction. The CCC can range from -1 to 1, with values near 1 indicating better-fitting models (Meek et al. 2009).

Deviations from the best giant ragweed emergence model were analyzed to determine whether they were associated with crop rotation or tillage treatments or with specific soil temperature conditions. Since the best giant ragweed emergence model

was from a mixed-effects model, random effects were fit to the observed data using maximum-likelihood methods in each treatment and site-year as done by Davis et al. (2013). Regression analyses were then performed to determine the relationship between fitted random effects, which were the dependent variables, and crop rotation and tillage treatments and observed soil temperature data. All analyses were performed using R v. 3.1.3 (R Foundation for Statistical Computing, Vienna, Austria).

Results and Discussion

Giant Ragweed Emergence. Giant ragweed emerged early in the growing season in all experiments, where on average 90% of giant ragweed emergence occurred on May 29 and June 4 in the tillage and crop rotation experiments, respectively (Goplen 2017; Goplen et al. 2017). Crop rotations with annual crops had similar giant ragweed emergence phenology, whereas emergence was slightly prolonged in established alfalfa, likely due to the prominent early-season crop canopy (Goplen et al. 2017). Tillage treatment reduced giant ragweed emergence the week following tillage, likely because tillage disrupted germinating seedlings and prevented them from emerging the week following tillage (Goplen 2017). Tillage treatments had similar levels of total giant ragweed emergence ($P = 0.466$), however, indicating that tillage did not stimulate or suppress total giant ragweed emergence.

Model Performance. Across all experiments and site-years, giant ragweed emergence was best fit by Model 8, a mixed-effects model derived from the arable accession model of Davis et al. (2013) (Tables 1 and 2). Model 8 had the lowest AICc, greatest Akaike weight (w_i), lowest RMSE, and greatest CCC among candidate models, although it was only marginally better than Model 5, indicating that it had the best fit of emergence across diverse cropping systems in this study (Table 2). Model 8 included the fixed effects specified in Table 1, and random effects determined by overwinter GDD (10 C) accumulated from October through March (W_{lrc}), and precipitation accumulated during seedling recruitment (P_{drop}). The random effect W_{lrc} included in Model 8 alters the predicted rate of emergence, with greater values indicating more rapid emergence. Davis et al. (2013) found lrc to be negatively associated with overwinter GDD (10 C), meaning lrc is greater and emergence progresses more rapidly following colder overwinter periods.

The more rapid progression of giant ragweed emergence following colder overwinter periods observed in this study has been shown to be related to greater dormancy loss following cold and moist conditions (Ballard et al. 1996; Davis et al. 2013; Schutte et al. 2012). Overwinter GDD (10 C) accumulated in this study ranged from 20 to 67 GDD (10 C), which was comparable to the coldest overwinter periods observed by Davis et al. (2013), which ranged from 0 to 300 GDD (10 C). This resulted in more rapid emergence predictions in all site-years of our study compared with the fixed-effects-only Model 2 (Figure 1). Davis et al. (2013) also found an association ($r = -0.39$, $P = 0.10$) between $drop$ and precipitation accumulated during seedling recruitment, which was used to predict $drop$ in Model 8 (AS Davis, personal communication). The negative association between $drop$ and precipitation during seedling recruitment indicates that smaller values for $drop$ occur when there is greater precipitation during seedling recruitment, resulting in an extended lag phase when there is greater precipitation during seedling recruitment. Compared with Model 2, including the random effects W_{lrc} and P_{drop} in Model 8 improved model performance by reducing RMSE by 0.04 and increasing CCC by 0.03 (Figure 1; Table 2). The improved emergence predictions with Model 8 compared with the fixed-effects-only Model 2 confirm the findings of Davis et al. (2013) that random effects for lrc and $drop$ describe deviations from the fixed-effects-only Model 2 (Table 2).

Model 5, a mixed-effects model derived from Davis et al. (2013) with fixed effects and a single random effect for W_{lrc} , was the second best performing giant ragweed emergence model evaluated in this study. The random effect in Model 5 included the same random effect for lrc (W_{lrc}) included in Model 8 based on overwinter GDD (10 C), but did not include the random effect for $drop$ (P_{drop}). Including only W_{lrc} in Model 5 still resulted in better model performance than the fixed-effects-only Model 2 and had nearly the same measures of RMSE and CCC as the top model. Model 5 had an Akaike weight (w_i) of <0.001 , however, implying that there was a low probability that it was the best among the candidate models and that it did not predict emergence as well as Model 8 (Table 2).

Models 4, 6, and 7 were also mixed-effects models derived from Davis et al. (2013) for arable accessions of giant ragweed but were inferior compared with Model 8 (Table 2). Model 6 included a single random effect for $drop$ determined by precipitation

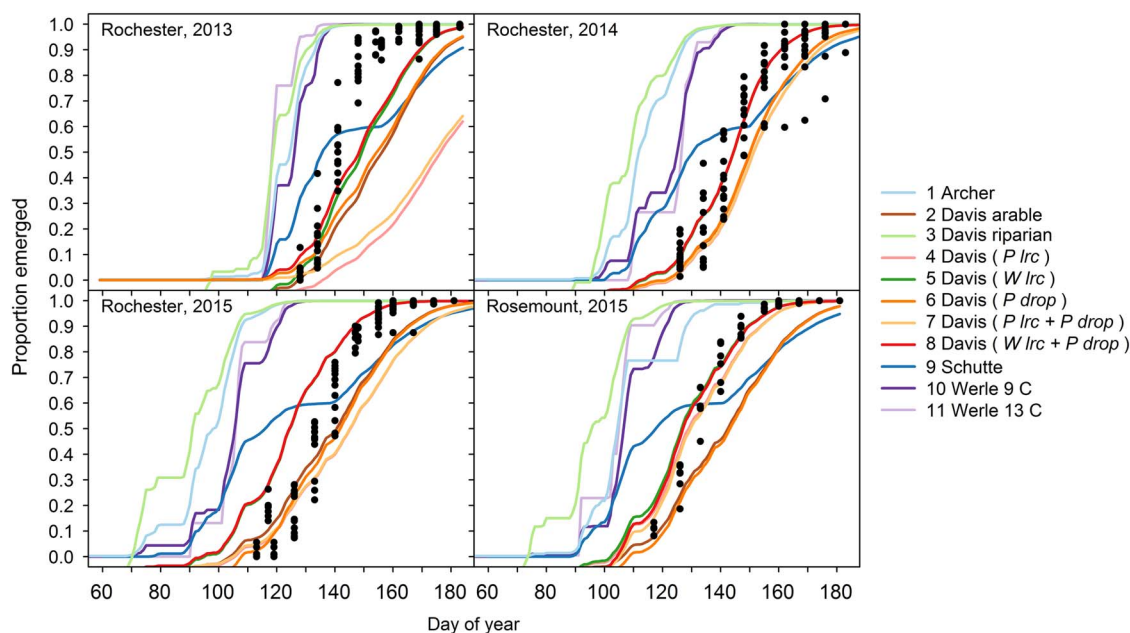


Figure 1. Predicted cumulative giant ragweed emergence by model in relation to observed mean cumulative emergence in each experimental treatment. Random effects included in the Davis et al. (2013) arable-accession mixed-effects models are shown in parentheses. Abbreviations: *P drop*, *drop* determined by precipitation during recruitment; *P lrc*, natural log of the rate of increase determined by precipitation during recruitment; *W lrc*, natural log of the rate of increase determined by winter GDD (10 C) accumulated from October to March.

accumulated during seedling recruitment (*P drop*), which resulted in model performance measures only marginally better than the fixed-effects-only Model 2 (Table 2). Models 4 and 7 had a random effect for *lrc* determined by precipitation during seedling recruitment (*P lrc*), and Model 7 included an additional random effect for *drop* based on precipitation accumulated during seedling recruitment (*P drop*). Random effects for *lrc* and *drop* were determined from Davis et al. (2013) by the negative associations between *lrc* and *drop* and precipitation accumulated during seedling recruitment. Among all models derived from Davis et al. (2013), the two best-fitting models across our experiments included a random effect for *lrc* determined by overwinter GDD (Models 5 and 8), while the worst-fitting models determined the random effect for *lrc* by precipitation accumulated during seedling recruitment (Models 4 and 7). These findings indicate that *lrc* is more closely associated with overwinter GDD (10 C) than precipitation during seedling recruitment (Table 2). Random-effect model parameters based on overwinter GDD (10 C) are also easier to use in making real-time emergence predictions, because random effects predicted from overwinter GDD (10 C) are known prior to giant ragweed recruitment. Random-effect parameters based on precipitation during the seedling recruitment period

are unknown until the end of seedling recruitment, meaning real-time emergence predictions will require recalculation of random-effect parameters as precipitation accumulates or use of historical averages and weather forecasts to predict random-effect parameters.

Model 9 was derived to model emergence of giant ragweed with a biphasic emergence pattern in Ohio (Schutte et al. 2008) and was among the top-performing models in our study. In our study, giant ragweed emergence generally occurred after the early flush but before the late flush of emergence predicted by Model 9. This monophasic emergence pattern aligning between the two flushes of emergence predicted by Model 9 indicates that giant ragweed populations in Minnesota have not diverged in their emergence timing as populations found in Ohio have done (Figure 1).

Across the crop rotation and tillage timing experiments, soil temperature at the 5-cm depth predicted by the STM² was associated with observed soil temperature ($R^2 = 0.88$, $P < 0.001$) (Figure 2). Although the observed and predicted soil temperatures were associated, the STM² had a mean bias of 2.9 C, indicating that the STM² predicted soil temperature to be 2.9 C warmer on average than what was observed. The 2.9 C bias of STM² temperature predictions caused predicted thermal time to accumulate faster

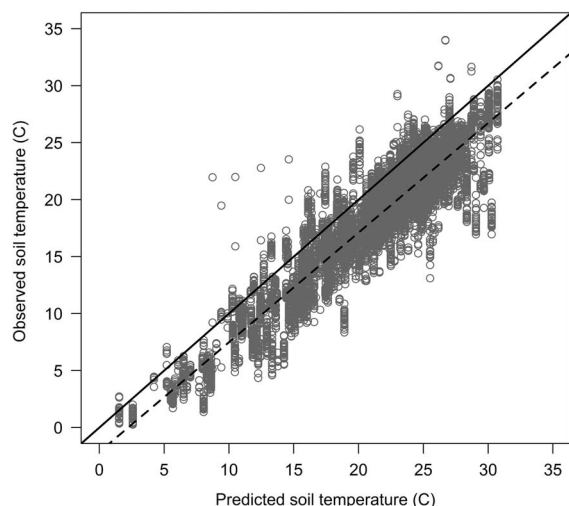


Figure 2. Daily average soil temperature at the 5-cm depth predicted by the soil temperature and moisture model (STM²) during the crop rotation and tillage timing experiments relative to observed soil temperature. The solid 1:1 line ($y = x$) indicates perfect agreement between observed and predicted soil temperature, while the dotted line indicates the fitted regression equation ($y = 0.96x - 2.1$, $R^2 = 0.88$, $P < 0.001$) between observed and predicted soil temperature.

than what actually occurred and contributed to premature giant ragweed emergence predictions for Models 1, 3, 10, and 11 in all site-years (Figure 1). This finding is similar to that of Perreault et al. (2013), who reported a mean bias of 2.5 C for STM² on loamy soils similar to soils at both of our study locations. The mean bias of the STM² among crop rotation and tillage timing treatments ranged from 1.7 to 3.9 C. Established alfalfa and wheat had the greatest mean bias values of 3.8 and 3.9 C, respectively, while soybean planted into soybean stubble had the lowest mean bias value of 1.7 C. The STM² does not account for changes in crop canopy during the growing season (Perreault et al. 2013), which likely explains why the STM² predictions had a greater bias in established alfalfa and wheat, which were established earlier and in narrower rows compared with corn and soybean. The STM² model was likely more accurate in previous giant ragweed emergence modeling studies, since they were developed with little or no canopy coverage (Archer et al. 2006; Davis et al. 2013; Schutte et al. 2008; Werle et al. 2014). Including a 2.9 C mean bias correction factor for STM² predictions decreased the RMSE of Models 1, 3, 10, and 11 by 0.06, 0.03, 0.09, and 0.08, respectively. However, including the mean bias correction factor increased the RMSE of Model 8 by 0.02, indicating that Model 8 without a bias correction was still the best among all models evaluated.

Soil Temperature Associations. The mixed-effects models derived by Davis et al. (2013) provide a versatile framework to study giant ragweed emergence, since unexplained model deviations can be attributed to environmental variation (Luschei and Jackson 2005). The associations found by Davis et al. (2013) allowed the derivation of mixed-effects Models 4 through 8 in our study. Using this same approach, new estimates of the random effects *drop* and *lrc* were determined for the arable accession model (Model 2) from Davis et al. (2013) for each site-year and treatment combination in our study. Regression analyses were performed to determine associations between random effects and experimental treatments and soil temperature (average daily minimum, maximum, mean, and fluctuation in temperature for various intervals during the seedling recruitment period). Neither crop rotation sequence nor tillage timing treatments were associated with the estimated random effects *drop* or *lrc* ($R^2 = 0.07$ to 0.42 , $P = 0.55$ to 0.99). There also were no associations between the estimated random effects for *lrc* and soil temperature variables ($R^2 = 0.01$ to 0.07 , $P = 0.17$ to 0.99). All soil temperature variables analyzed were positively associated with the estimated random effects for *drop* ($R^2 = 0.24$ to 0.72 , $P < 0.001$ to 0.006), meaning warmer soil temperature variables or greater temperature fluctuations had greater fitted random effects for *drop*. The soil temperature variable most strongly associated with the fitted random effect for *drop* was the maximum daily soil temperature during the entire seedling recruitment period ($R^2 = 0.72$, $P < 0.001$). This relationship indicates that greater maximum soil temperatures during seedling recruitment were associated with greater fitted random effects for *drop*, the term representing the lower horizontal asymptote of the Weibull function (Figure 3). A greater random effect for *drop* equates to a shorter lag period at the start of giant ragweed emergence.

Observed average daily soil temperature fluctuation during the entire seedling recruitment period was the second most significant association with the estimated random effects for *drop* ($R^2 = 0.70$, $P < 0.001$) (Figure 3). It is possible that either the amplitude or number of temperature fluctuations influences giant ragweed emergence rather than maximum soil temperature, as shown for other weed species including johnsongrass [*Sorghum halpense* (L.) Pers.] and large crabgrass [*Digitaria sanguinalis* (L.) Scop.] (Benech Arnold et al. 1990a, 1990b; Forcella et al. 2000; King and Oliver 1994). Daily

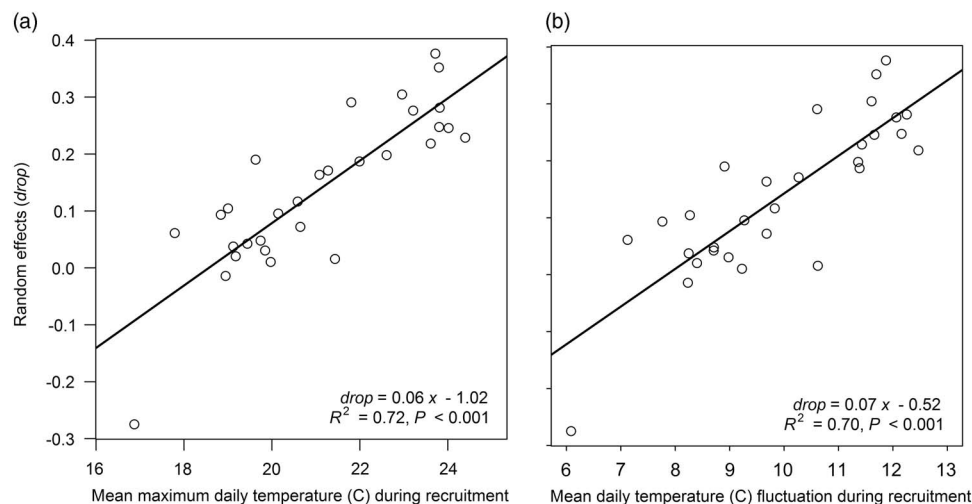


Figure 3. Association between the estimated random effects of *drop* and (a) mean maximum daily temperature observed at a 5-cm soil depth during the seedling recruitment period and (b) mean daily temperature fluctuation at a 5-cm soil depth during seedling recruitment.

maximum soil temperature was the primary factor influencing daily temperature fluctuation, as evidenced by the strong association between the two variables ($r = 0.98$, $P < 0.001$), indicating that greater daily maximum soil temperature is more influential on daily soil temperature fluctuation than daily minimum soil temperature, which has been reported previously (Perreault et al. 2013). These findings indicate that giant ragweed emergence will have a shorter lag phase at the start of emergence in environments with greater maximum daily soil temperature and corresponding greater soil temperature fluctuation. Davis et al. (2013) stated that the associations they found between random effects for *lrc* and precipitation accumulated during seedling recruitment may have been caused by increased cloud cover accompanying increased precipitation. Cloud cover and precipitation can limit maximum daily soil temperature, and since soil temperature was not directly measured in Davis et al. (2013), it is possible that the association between random effects and precipitation during seedling recruitment found in Davis et al. (2013) was driven by maximum daily soil temperature or daily temperature fluctuation, as found in the present study.

The positive association between random effects for *drop* and mean maximum daily soil temperature supports the findings of Goplen et al. (2017), in which giant ragweed emergence extended later into the growing season in established alfalfa compared with annual crops. The extended emergence was likely due to lower soil temperatures causing a longer initial lag period in emergence. Longer initial lag periods in emergence could also be expected in other

crops established early in the growing season that limit soil temperature, such as small grains or cover crops (Zhang et al. 2009), although this was not shown to be the case for wheat (Goplen et al. 2017). It is also possible that crop management practices maintaining increased soil residue associated with conservation tillage will have similar effects on giant ragweed emergence, since they can also affect soil temperature (Griffith et al. 1973; Kladvik et al. 1986).

Model 8, a mixed-effects model derived from Davis et al. (2013) that included random effects for *drop* and *lrc* based on precipitation accumulated during seedling recruitment and overwinter GDD (10 C), respectively, was the model that most accurately predicted giant ragweed emergence across crop rotations and spring tillage dates. The top four models that best fit giant ragweed emergence in the present study originated from Davis et al. (2013), with the top two models including random effects predicted by overwinter GDD (10 C). This is supported by studies of giant ragweed seed dormancy, which have found that cold and moist conditions during winter enhance seed dormancy release (Ballard et al. 1996; Schutte et al. 2012).

This is the first study to verify the utility of previously published giant ragweed emergence models under a diversity of crop management practices and supports previous research showing that giant ragweed emergence is affected by winter weather. This research also suggests that crops such as alfalfa, small grains, and cover crops, which have lower soil temperature during seedling recruitment compared with annual row crops, will have a longer lag phase at the initiation of giant ragweed

emergence, potentially extending emergence later into the growing season. The delay in emergence may provide weed control benefits, as later-emerged giant ragweed will be subjected to increased competition with established crops. As herbicide-resistant giant ragweed continues to be problematic, robust emergence model predictions will be increasingly important to optimize planting, tillage, and herbicide application dates in a variety of crop management systems to improve giant ragweed control.

Acknowledgments

This research was funded by the Monsanto Graduate Fellowship, the Rapid Agricultural Response Fund of the University of Minnesota Agricultural Experiment Station, and the Torske Klubben Graduate Fellowship. The authors express appreciation to numerous faculty, staff members, and students for their assistance, in particular Adam Davis, Brad Kincaid, Doug Miller, and Frank Forcella.

Literature Cited

- Anderson DR (2008) Model Based Inference in the Life Sciences: Primer on Evidence. New York: Springer Science + Business Media. 184 p
- Anderson RL (1994) Weed community seedling emergence for a semiarid site in Colorado. *Weed Technol* 8:245–249
- Archer DW, Forcella F, Korth A, Kuhn A, Eklund J, Spokas K (2006) WeedCast. <http://www.ars.usda.gov/services/software/download.htm?softwareid=112>. Accessed: December 6, 2016
- Ballard TO, Foley ME, Bauman TT (1996) Germination, viability, and protein changes during cold stratification of giant ragweed (*Ambrosia trifida* L.) seed. *J Plant Physiol* 149:229–232
- Benech Arnold RL, Ghersa CM, Sanchez RA, Insausti P (1990a) Temperature effects on dormancy release and germination rate in *Sorghum halepense* (L.) Pers. seeds: a quantitative analysis. *Weed Res* 30:81–89
- Benech Arnold RL, Ghersa CM, Sanchez RA, Insausti P (1990b) A mathematical model to predict *Sorghum halepense* (L.) Pers. seedling emergence in relation to soil temperature. *Weed Res* 30:91–99
- Buhler DD, Hartzler RG, Forcella F, Gunsolus JL (1997) Sustainable Agriculture: Relative Emergence Sequence for Weeds of Corn and Soybeans. Ames, IA: Iowa State University Extension Bulletin SA-11
- Burnham KP, Anderson DR (2002) Model Selection and Inference: A Practical Information-Theoretic Approach. 2nd edn. New York: Springer Verlag, 488 p
- Carey JB, Kells JJ (1995) Timing of total postemergence herbicide applications to maximize weed control and corn yield. *Weed Technol* 9:356–361
- Davis AS, Clay S, Cardina J, Dille A, Forcella F, Lindquist J, Sprague C (2013) Seed burial physical environment explains departures from regional hydrothermal model of giant ragweed (*Ambrosia trifida*) seedling emergence in U.S. Midwest. *Weed Sci* 61:415–421
- Forcella F, Benech-Arnold RL, Sanchez R, Ghersa CM (2000) Modeling seedling emergence. *Field Crops Res* 67:123–139
- Forcella F, Eradat-Oskoui K, Wagner SW (1993) Application of weed seedbank ecology to low-input crop management. *Ecol Appl* 3:74–83
- Goplen JJ (2017) Emergence modeling and economics of managing herbicide-resistant giant ragweed (*Ambrosia trifida*) with crop rotation. Ph.D. dissertation. Minneapolis, MN: University of Minnesota. 73 p
- Goplen JJ, Sheaffer CC, Becker RL, Coulter JA, Breitenbach FR, Behnken LM, Johnson GA, Gunsolus JL (2017) Seed bank depletion and emergence patterns of giant ragweed (*Ambrosia trifida*) in Minnesota cropping systems. *Weed Sci* 65:52–60
- Griffith DR, Mannering JV, Galloway HM, Parsons SD, Richey CB (1973) Effect of eight tillage-planting systems on soil temperature, percent stand, plant growth, and yield of corn on five Indiana soils. *Agron J* 65:321–326
- Gunsolus JL (1990) Mechanical and cultural weed control in corn and soybeans. *Am J Alternative Agr* 5:114–119
- Heap I (2016) The International Survey of Herbicide-Resistant Weeds. <http://www.weedscience.org>. Accessed: December 6, 2016
- Hoeting JA, Madigan D, Raftery AE, Volinsky CT (1999) Bayesian model averaging: a tutorial (with discussion). *Stat Sci* 14:382–417
- Hurvich CM, Tsai CL (1989) Regression and time series model selection in small samples. *Biometrika* 76:297–307
- King CA, Oliver LR (1994) A model for predicting large crabgrass (*Digitaria sanguinalis*) emergence as influenced by temperature and water potential. *Weed Sci* 42:561–567
- Kladivko EJ, Griffith DR, Mannering JV (1986) Conservation tillage effects on soil properties and yield of corn and soya beans in Indiana. *Soil Till Res* 8:277–287
- Kobayashi K, Salam MU (2000) Comparing simulated and measured values using mean squared deviation and its components. *Agron J* 92:345–352
- Legates DR, McCabe GJ Jr (1999) Evaluating the use of “goodness-of-fit” measures in hydrologic and hydroclimatic model validation. *Water Resources Res* 35:233–241
- Liebman M, Dyck E (1993) Crop rotation and intercropping strategies for weed management. *Ecol Appl* 3:92–122
- Luschei EC, Jackson RD (2005) Research methodologies and statistical approaches for multitactic systems. *Weed Sci* 53:393–403
- Meek DW, Howell TA, Phene CJ (2009) Concordance correlation for model performance assessment: an example with reference evapotranspiration observations. *Agron J* 101:1012–1018
- Menalled F, Schonbeck M (2013) Manage the weed seed bank—minimize “deposits” and maximize “withdrawals.” eXtension. <http://www.extension.org/pages/18527/manage-the-weed-seed-bankminimize-deposits-and-maximize-withdrawals>. Accessed: December 6, 2016
- Mitchell PL (1997) Misuse of regression for empirical validation of models. *Agric Syst* 54:313–326
- Perreault S, Chokmani K, Nolin MC, Bourgeois G (2013) Validation of a soil temperature and moisture model in southern Quebec, Canada. *Soil Sci Soc Am J* 77:606–617
- Schutte BJ, Regnier EE, Harrison SK (2012) Seed dormancy and adaptive seedling emergence timing in giant ragweed (*Ambrosia trifida*). *Weed Sci* 60:19–26
- Schutte BJ, Regnier EE, Harrison SK, Schmoll JT, Spokas K, Forcella F (2008) A hydrothermal seedling emergence model for giant ragweed (*Ambrosia trifida*). *Weed Sci* 56:555–560

- Sellers BA, Ferrell JA, MacDonald GE, Kline WN (2009) Dogfennel (*Eupatorium capillifolium*) size at application affects herbicide efficacy. *Weed Technol* 23:247–250
- Spokas K, Forcella F (2009) Software tools for weed seed germination modeling. *Weed Sci* 57:216–227
- Sugiura N (1978) Further analysis of the data by Akaike's information criterion and the finite corrections. *Commun Stat-Theor M* 7:13–26
- Tedeschi LO (2006) Assessment of the adequacy of mathematical models. *Agric Syst* 89:225–247
- Webster TM, Loux M, Regnier EE, Harrison SK (1994) Giant ragweed (*Ambrosia trifida*) canopy architecture and interference studies in soybean (*Glycine max*). *Weed Technol* 8:559–564
- Werle R, Sandell LD, Buhler DD, Hartzler RG, Lindquist JL (2014) Predicting emergence of 23 summer annual weed species. *Weed Sci* 62:267–279
- Wortman SE, Davis AS, Schutte BJ, Lindquist JL, Cardina J, Felix J, Sprague CL, Dille JA, Ramirez AHM, Reicks G, Clay SA (2012) Local conditions, not regional gradients, drive demographic variation of giant ragweed (*Ambrosia trifida*) and common sunflower (*Helianthus annuus*) across northern U.S. maize belt. *Weed Sci* 60:440–450
- Zhang S, Lovdahl L, Grip H, Tong Y, Yang X, Wang Q (2009) Effects of mulching and catch cropping on soil temperature, soil moisture, and wheat yield on the loess plateau of China. *Soil Till Res* 102:78–86

Received December 16, 2016, and approved May 30, 2017.

Associate Editor for this paper: John L. Lindquist, University of Nebraska.