



Hiddenocysta matsuokae gen. et sp. nov. from the Holocene of Vancouver Island, British Columbia, Canada

Authors: Gurdebeke, Pieter R., Mertens, Kenneth Neil, Meyvisch, Pjotr, Bogus, Kara, Pospelova, Vera, et al.

Source: Palynology, 45(1) : 103-114

Published By: AASP: The Palynological Society

URL: <https://doi.org/10.1080/01916122.2020.1750500>

BioOne Complete (complete.BioOne.org) is a full-text database of 200 subscribed and open-access titles in the biological, ecological, and environmental sciences published by nonprofit societies, associations, museums, institutions, and presses.

Your use of this PDF, the BioOne Complete website, and all posted and associated content indicates your acceptance of BioOne's Terms of Use, available at www.bioone.org/terms-of-use.

Usage of BioOne Complete content is strictly limited to personal, educational, and non - commercial use. Commercial inquiries or rights and permissions requests should be directed to the individual publisher as copyright holder.

BioOne sees sustainable scholarly publishing as an inherently collaborative enterprise connecting authors, nonprofit publishers, academic institutions, research libraries, and research funders in the common goal of maximizing access to critical research.



Hiddenocysta matsuokae gen. et sp. nov. from the Holocene of Vancouver Island, British Columbia, Canada

Pieter R. Gurdebeke^a , Kenneth Neil Mertens^b , Pjotr Meyvisch^a , Kara Bogus^c , Vera Pospelova^{d,e} and Stephen Louwye^a

^aDepartment of Geology, Ghent University, Belgium; ^bIfremer, LER BO, Station de Biologie Marine, Concarneau CEDEX, France; ^cCamborne School of Mines, University of Exeter, Penryn, Cornwall, UK; ^dDepartment of Earth and Environmental Sciences, University of Minnesota, Minneapolis, MN, USA; ^eSchool of Earth and Ocean Sciences, University of Victoria, Victoria, British Columbia, Canada

ABSTRACT

A new dinoflagellate cyst genus and species are described here as *Hiddenocysta* gen. nov. and *Hiddenocysta matsuokae* sp. nov. from Holocene sediments in a core from the west coast of Vancouver Island (British Columbia, Canada). The genus *Hiddenocysta* encompasses spherical to ovoid skolechochate cysts, characterized by a gonyaulacoid plate pattern and a 2P preingular archeopyle. The species *H. matsuokae* is characterized by a granular wall and slender trifurcate processes with heavily perforated process bases. Two end members are described here based on process morphology and number of processes (formas 1 and 2). Cyst wall chemistry is analyzed using micro-Fourier transform infrared (FTIR) spectroscopy and reveals a unique dinosporin composition consistent with a gonyaulacoid autotrophic feeding strategy.

KEYWORDS

dinoflagellate cyst; taxonomy; North Pacific ocean; FTIR; wall composition; gonyaulacoid

1. Introduction

Around 360 of the >2000 known species of dinoflagellates are known to produce resting cysts as part of their life cycle (e.g. Head 1996; Gómez 2012a; Penaud et al. 2018). The majority of the resting cysts are organic-walled; they can be found in nearly all aquatic sediments and have been reported from surface sediment and sediment trap studies in coastal and estuarine waters of Western Canada (e.g. Dobell 1978; Kumar and Patterson 2002; Mudie et al. 2002; Radi et al. 2007; Krepakevich and Pospelova 2010; Pospelova et al. 2010; Price and Pospelova 2011; Gurdebeke et al. 2018b; see Figure 1). Several new species have been described from this region in recent years (e.g. Mertens et al. 2012, 2013; Gurdebeke et al. 2019a; Gurdebeke et al. 2019b). Knowledge gained on the taxonomy and ecology of dinoflagellate cysts improves the quality of their application as a proxy for past environmental change in coastal British Columbia (e.g. Bringué et al. 2016), and in biological studies that, for example, try to identify seed banks of harmful species (e.g. Gurdebeke et al. 2018b). Furthermore, in recent years, two workshops on the complex genus *Spiniferites* renewed the interest in spiniferate cysts (e.g. Gurdebeke et al. 2018a; Limoges et al. 2018; Londeix et al. 2018; Mertens et al. 2018; Mertens and Carbonell-Moore 2018; Van Nieuwenhove et al. 2018) and chorate and proximochorate cysts produced by autotrophic dinoflagellates in general. However, despite these improvements, some dinoflagellate cyst types from this region remain poorly understood and have been left

undescribed; these can now be re-evaluated (e.g. Dobell and Taylor 1981).

The macromolecular chemical composition of dinoflagellate cyst walls, classically described as 'dinosporin' (e.g. Fensome et al. 1993), has been studied most extensively on whole cysts using micro-Fourier transform infrared (micro-FTIR) spectroscopy. Dinoposporin was found to consist of a diverse suite of complex carbohydrates (e.g. Kokinos et al. 1998; Versteegh et al. 2012; Bogus et al. 2014; Mertens et al. 2015, 2017; Gurdebeke et al. 2018a; Luo et al. 2018) with suggestions that there are differences in composition related to trophic preference (e.g. Bogus et al. 2014) and phylogeny (e.g. Gurdebeke et al. 2018a; Gurdebeke et al. 2019a). As features such as ribosomal DNA and in vivo and culture experiments are not available for dinoflagellate cysts in the fossil record, information from cyst wall chemistry is a welcome addition to the morphological data. However, study of more cyst taxa is desirable to further explore the utility of micro-FTIR for chemotaxonomy (i.e. a classification based on similarities in chemical structure and composition) and for an increased understanding of dinoflagellate (paleo)ecology and the possibly differential preservation of their cysts (Zonneveld et al. 1997).

Dobell and Taylor (1981) documented an unusual dinoflagellate cyst type from Hidden Basin (British Columbia, Canada), which was not reported since (e.g. Mertens et al. 2018). Two intergrading morphologies were described as *Spiniferites* sp. 1 and *Spiniferites* sp. 2, and the hatched motile stages were identified as *Gonyaulax* sp. 1 and *Gonyaulax* sp.

CONTACT Pieter R. Gurdebeke Pieter.gurdebeke@ugent.be Department of Geology, Ghent University, Krijgslaan 281, S8, 9000 Ghent, Belgium.

Supplemental data for this article is available online at <https://doi.org/10.1080/01916122.2020.1750500>.

© 2020 AASP – The Palynological Society

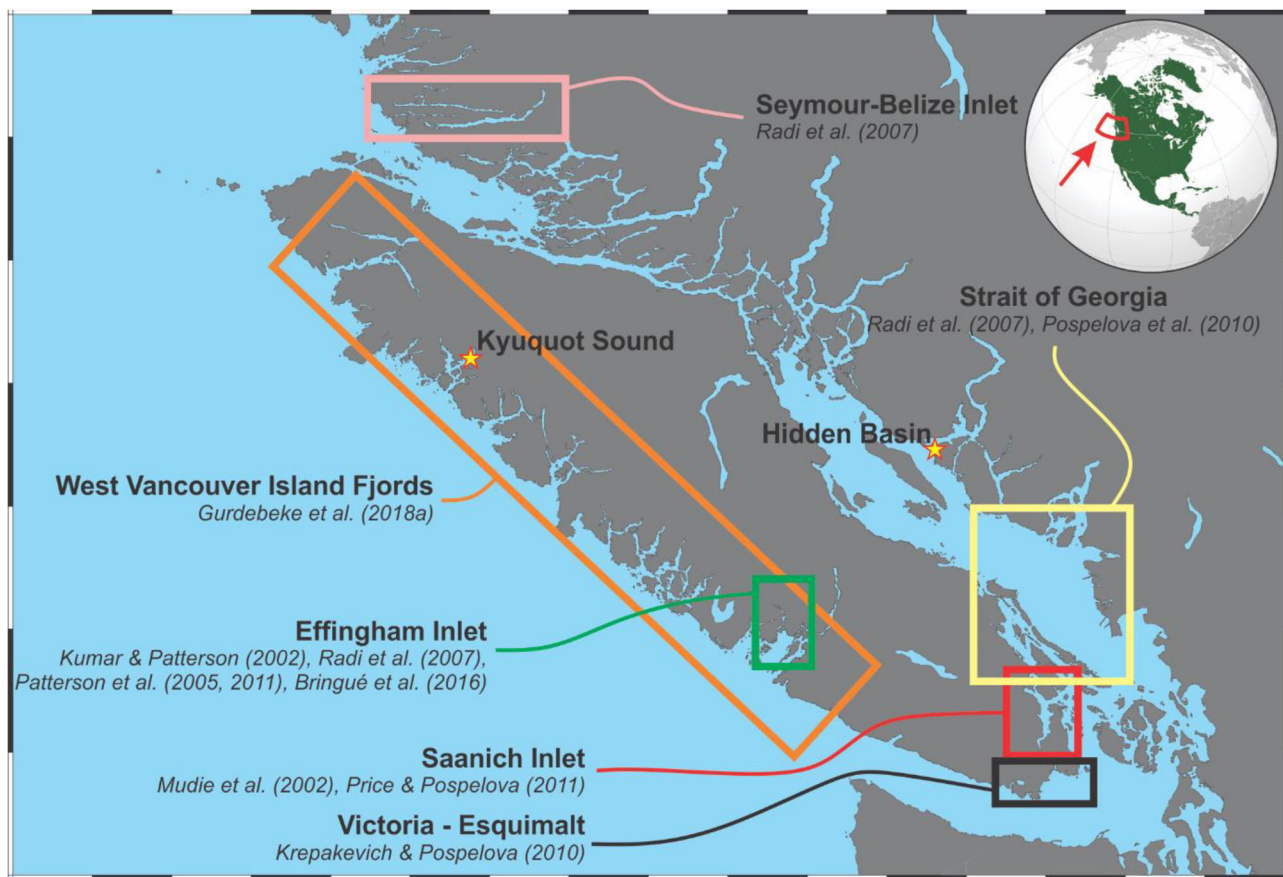


Figure 1. Map of Vancouver Island, with indication of study areas of previous studies on dinoflagellate cyst distribution, with indication of both localities where *Hiddenocysta matsuoekae* sp. nov. is found: Kyuquot Sound and Hidden Basin (stars).

2 (Dobell and Taylor 1981). Here, morphologically identical cysts are studied from the Holocene sediments of Kyuquot Sound (Vancouver Island, British Columbia, Canada), as *Hiddenocysta matsuoekae* gen. et sp. nov. and its cyst wall chemistry is documented using micro-FTIR.

2. Material and methods

A total of 103 samples (UVic 15-583 to UVic 15-684; [Supplementary Information Table S1](#)) were subsampled from a 9.9 m long piston core (2012002PGC133), retrieved in 2012 by the Geological Survey of Canada 8 km from the head of Tahsish Inlet in Kyuquot Sound (50°5'27.80"N, 127°9'2.75"W; 147 m water depth; [Figure 1](#)). The samples were taken at regular intervals (every 10 cm) in the core, with the exception of the upper 50 cm, where a resolution of 5 cm was used. A plastic syringe was pushed in the core sediment to sub-sample ~2 cm³ of material. The sediment is mainly olive-green silty mud. The subsamples were kept in 15 cc polypropylene test tubes. The chronology of core 2012002PGC133 was established from five accelerator mass spectrometry (AMS) ¹⁴C measurements on plant fragments or bulk sediment (Gurdebeke et al. 2019a; Gurdebeke et al. 2019b; see [Figure 2](#)).

Sediment subsamples were treated following the palynological preparation method used at the Paleoenvironmental Laboratory, School of Earth and Ocean Sciences, University of

Victoria, Canada (e.g. Pospelova et al. 2010; Price et al. 2016). After drying (~40 °C) and weighing the sediment sample, a fixed number of exotic marker spores (*Lycopodium clavatum*) was added (one tablet from batch #177,745; 18,584 spores/tablet) for quantitative abundance estimations ([Table S1](#)). To remove carbonates, samples were treated with hydrochloric acid (room temperature 10% HCl). After rinsing with distilled water, samples were sieved through a 120 µm mesh and captured on 10 µm mesh nylon Nitex screens to separate coarse and fine fractions. Subsequently, the samples were treated for 4–5 days with hydrofluoric acid (room temperature 50% HF) to remove silicates. Possible fluorosilicates were removed by a second round of room-temperature 10% HCl treatment. After rinsing with distilled water twice, the residue was sonicated for up to 30 s and collected on a 10 µm mesh screen. One or two drops of the residue were mounted in glycerine jelly, covered with a cover slip and sealed with transparent nail polish.

Slides were systematically scanned in non-overlapping traverses at 400× magnification using a transmitted light microscope (LM) (Zeiss Axioskop 2 plus). A targeted count of 300 dinoflagellate cysts were systematically identified per slide ([Table S1](#)). LM photomicrographs were produced from the same microscope using an MRc 5 (Zeiss) camera. Cysts were picked with a micropipette from the residue of sample 15-609 and photomicrographed on an Olympus BX51 microscope with a digital sight DS-1L 1 module (Nikon, Tokyo, Japan).

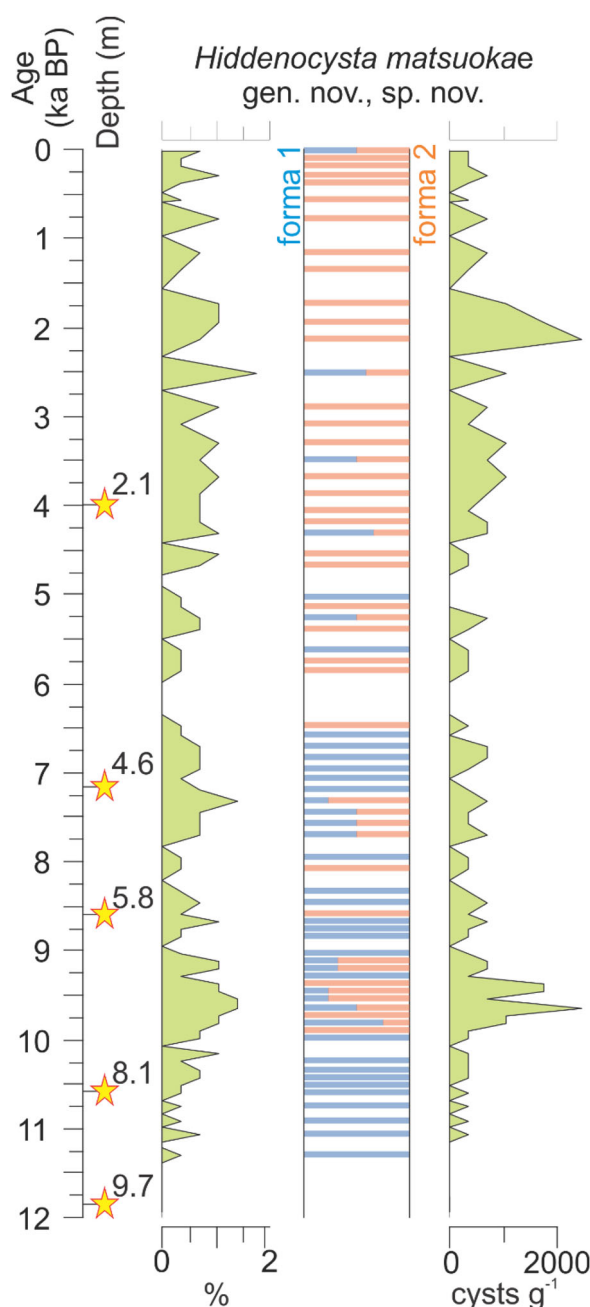


Figure 2. Diagram showing the downcore relative and absolute abundance of *Hiddenocysta matsuoekae* sp. nov. in core 2012002PGC133. A total of 146 specimens was observed in the core record (Supplementary Information Table 1). Yellow stars indicate the levels of radiocarbon dating (Gurdebeke et al. 2019a, 2019b). Blue and orange bars indicate the proportions of forms 1 and 2, respectively.

Field-emission scanning electron microscope (FE-SEM) images were taken from cysts picked from the residue of sample UVic 15-609 (7.2 m core depth, ~9.8 ka). Specimens were first isolated from the samples with a micropipette under an IX51 (Olympus) or IM35 (Zeiss) inverted microscope and transferred onto polycarbonate membrane filters (Millipore, Billerica, MA, USA; GTTP Isopore, 0.22 µm pore size). After 12 to 24 h of air-drying, the filters were affixed to aluminum stubs with adhesive tabs. Other specimens were subjected to dehydration and critical point drying, as

outlined in Chomérat and Couté (2008), to prevent them from collapsing during drying. Subsequently, the mounted filters were sputter coated with gold using a Cressington 108 Auto Sputter Coater. The samples were observed with a Sigma 300 (Zeiss) field-emission SEM equipped with conventional Everhart–Thornley and in-lens detectors of secondary electrons at 1.5 and 5 kV, located at the Station of Marine Biology of Concarneau.

For micro-FTIR analysis, cysts were manually picked from palynological residue from the core-top sediment sample (UVic 15-684). The residue was ultrasonicated for 30 s and rinsed 3 times with organic solvents (methanol and dichloromethane, 1:1 by volume) and MilliQ water over a 20 µm mesh-size filter to remove polar and apolar compounds that might have adhered to the cyst walls. Visually clean and empty cysts were manually isolated, placed on a gold-coated mirror and air-dried. Specimens were analyzed with a Bruker Hyperion 2000 microscope coupled to a Bruker Vertex 80v FTIR spectrometer in the Department of Solid State Sciences (Ghent University, Belgium) over an infrared range of ~4000–650 cm⁻¹. The objective magnification of the microscope was set at 15× and the aperture at 100 × 100 µm. All presented spectra were recorded in reflection mode, at a resolution of 2 cm⁻¹, and averaged over 100 scans. Data were analyzed with the OPUS© software (Bruker 2014). The presented absorbance spectra were obtained after background subtraction, atmospheric correction and baseline correction with a rubberband method using polynomes. Functional groups were identified based on comparison with Colthup et al. (1990) and published data (e.g. Cárdenas et al. 2004; Bogus et al. 2014; Gurdebeke et al. 2018a). Data reduction was performed as a principal component analysis (PCA) using PAST 3.2 (Hammer et al. 2001).

3. Results

3.1. Systematic paleontology

Division DINOFLAGELLATA (Bütschli 1855) Fensome et al. 1993

Class DINOPHYCEAE Pascher 1914

Order GONYAULACALES Taylor 1980

Family GONYAULACACEAE Lindemann 1928

***Hiddenocysta*.** P Gurdebeke, V Pospelova, KN Mertens and S Louwye gen. nov.

Etymology. In reference to Hidden Basin (Nelson Island, British Columbia, Canada), where similar cysts were reported by Dobell and Taylor (1981).

Type species. *Hiddenocysta matsuoekae* sp. nov.

Diagnosis. Skolochorate cyst with spherical to ovoid central body bearing gonal and intergonal processes reflecting a gonyaulacacean tabulation (?3–4', 6'', 5''', 1p, 1'''). Processes connected or not by crests. Compound archeopyle consisting of 3'' and 4'', operculum free.

Remarks. This cyst was first reported by Dobell and Taylor (1981) in surface sediments from Hidden Basin (British Columbia, Canada), who considered it to belong to the genus *Spiniferites* (*Spiniferites* sp. 1 and *S.* sp. 2).

Comparison. *Hiddenocysta*'s 2P precingular archeopyle distinguishes the genus from *Spiniferites* and *Achomosphaera*, which have a single (3'') plate archeopyle. A further difference from *Spiniferites* is that the latter genus always has pronounced crests connecting the process bases, which are often absent in *Hiddenocysta*. The genus *Achomosphaera*, on the other hand, never has crests (Mertens et al. 2018). The extant genus *Bitectatodinium* has a similar 2P precingular archeopyle but is 'without obvious surface projections' (Wilson 1973, p. 351). A number of Mesozoic cyst genera have a similar general appearance and a two-plate archeopyle, but each can be distinguished from *Hiddenocysta*: *Kiokansium* (Duxbury 1983) has a smooth wall, simpler processes and a complete absence of tabulation; *Taleisphaera* (Masure 1986) has diagnostic penitabular crests; *Pulchrasphaera* (Schjølter et al. 1997) has low non-tabular ornamentation; *Nexosispinum* (Davey 1979) has anastomosing processes; *Corradinium* (Masure 1986) mainly has intratabular processes; *Gongylodinium* (Fenton et al. 1980) is non-tabulate and does not bear processes; and *Occiscucysta* (Gitmez 1970) is characterized by a pronounced apical boss and denticulate or spiny sutural crests. The genera *Durotrigia*, *Dissiliodinium* and *Cavatodissiliodinium* have a multiplate precingular archeopyle but one that most often involves more than two plates (Feist-Burkhardt and Monteil 2001). Furthermore, species of *Dissiliodinium* are characterized by negative structures (i.e. grooves), *Cavatodissiliodinium* is cavate, and *Durotrigia* species have ridges and septae, but no processes (Feist-Burkhardt and Monteil 2001).

***Hiddenocysta matsuokae*.** P. Gurdebeke, V. Pospelova, KN Mertens and S. Louwye sp. nov.

Plates 1–3

Synonymy.

- Spiniferites* sp. 1 Dobell and Taylor (1981), pl. 1, figs 4, 11.
Spiniferites sp. 2 Dobell and Taylor (1981), pl. 1, figs 9, 10, 12, 13, 16.
Spiniferites sp. Dobell and Taylor (1981), pl. 1, figs 14, 15, 19, 20.

Etymology. In honor of Dr. Kazumi Matsuoka, who made fundamental contributions to the taxonomy of dinoflagellates, mainly from the Pacific domain, specifically about cyst stages.

Holotype. Kyuquot Sound (British Columbia, Canada), core 2012002PGC133, slide UVic 2015-594-2 (870 cm core depth, ~11 ka), EF Q42/1 (label left), Plate 1, figures 1–6; Plate 2, figure 1.

Repository. Royal Belgian Institute of Natural Sciences (RBINS, Brussels), accession no. IRSNB b7162.

Diagnosis. Cysts relatively large, spherical or slightly elongated, skolechorate. Wall granular and ornamented with numerous processes. Generally, gonal processes trifurcate and intergonal processes bifurcate. The distribution of the processes reflects a gonyaulacoid plate pattern. Process bases are hollow and periphragm is heavily fenestrated. Neighboring processes can be connected by crests, mostly by a discrete lineation reflecting a septum or by an expanded periphragm that merges between two processes. One type of process is long, slender and trifurcate, with each of the three ends bifurcate and recurved. Other processes are shorter and broader, with more expanded bases, and are also often trifurcate with bifurcate terminations. Distally from the pericoel, the processes are solid, but occasionally with one or more bubble-like structures along the length of the process shaft, above, below or at the trifurcation. Archeopyle compound; operculum involves two precingular plates (3'' and 4'') that release separately, and is free.

Dimensions. Holotype: central body $62 \times 51 \mu\text{m}$; process length $14.8 \mu\text{m}$ ($N=4$). Forma 1 has a smaller central body and longer processes, whereas Forma 2 has a larger central body and shorter processes. The average sum of the central body diameter and process length is $\sim 71.9 \mu\text{m}$ for Forma 1 and $\sim 71.2 \mu\text{m}$ for Forma 2. The central body wall is $\sim 1.1 \mu\text{m}$ thick ($N=3$). For Forma 1, the height of the trifurcation above the process base is $\sim 7.7 \mu\text{m}$ ($N=16$) (see Table 1).

Description. The cysts are spherical to ovoidal. The archeopyle margins follow the suture lines, and a projection from the apical margin of the archeopyle suggests 2P (Plate 3, figures 1–3). These plates are of similar size; plate 3'' is pentagonal and 4'' is quadrangular (Plate 3, figures 1–2; see also Dobell and Taylor 1981). The cyst wall is granular on the outside and smooth on the inside (Plate 2, figure 5), and an endophragm and periphragm can be distinguished (cf. Evitt 1985; Figure 3). Near the processes, the phragma separate, and a pericoel forms the hollow process base. The periphragm lining the pericoel is heavily fenestrated (Plates 1–3). Two morphological end members can be defined within this species, and morphologies ranging between these end members were observed. The first end member (Forma 1; Figure 3; Plate 1, figures 1–6; Plate 2, figures 1–2) has long and slender trifurcate processes terminating in recurved bifurcations resembling tendrils (cf. a Greek Ionian pillar). A single bubble-like structure is present below, at or above the trifurcation (Plate 2, figure 1). The processes in Forma 1 are never connected by crests but by very low lineations only. The other end member (Forma 2; Figure 3; Plate 2, figures 2–9) has no clear single bubble-like structures as in Forma 1 but sometimes has numerous distributed small bubble-like structures in the processes (Plate 2, figure 7); process bases are more expanded, more heavily fenestrated and more often connected by the merging of the expanded periphragm at the respective process bases. There are more intergonal processes in Forma 2. There is no apparent heterogeneity in processes with respect to position on the cyst body. Distally from the pericoel, the process is solid, but in

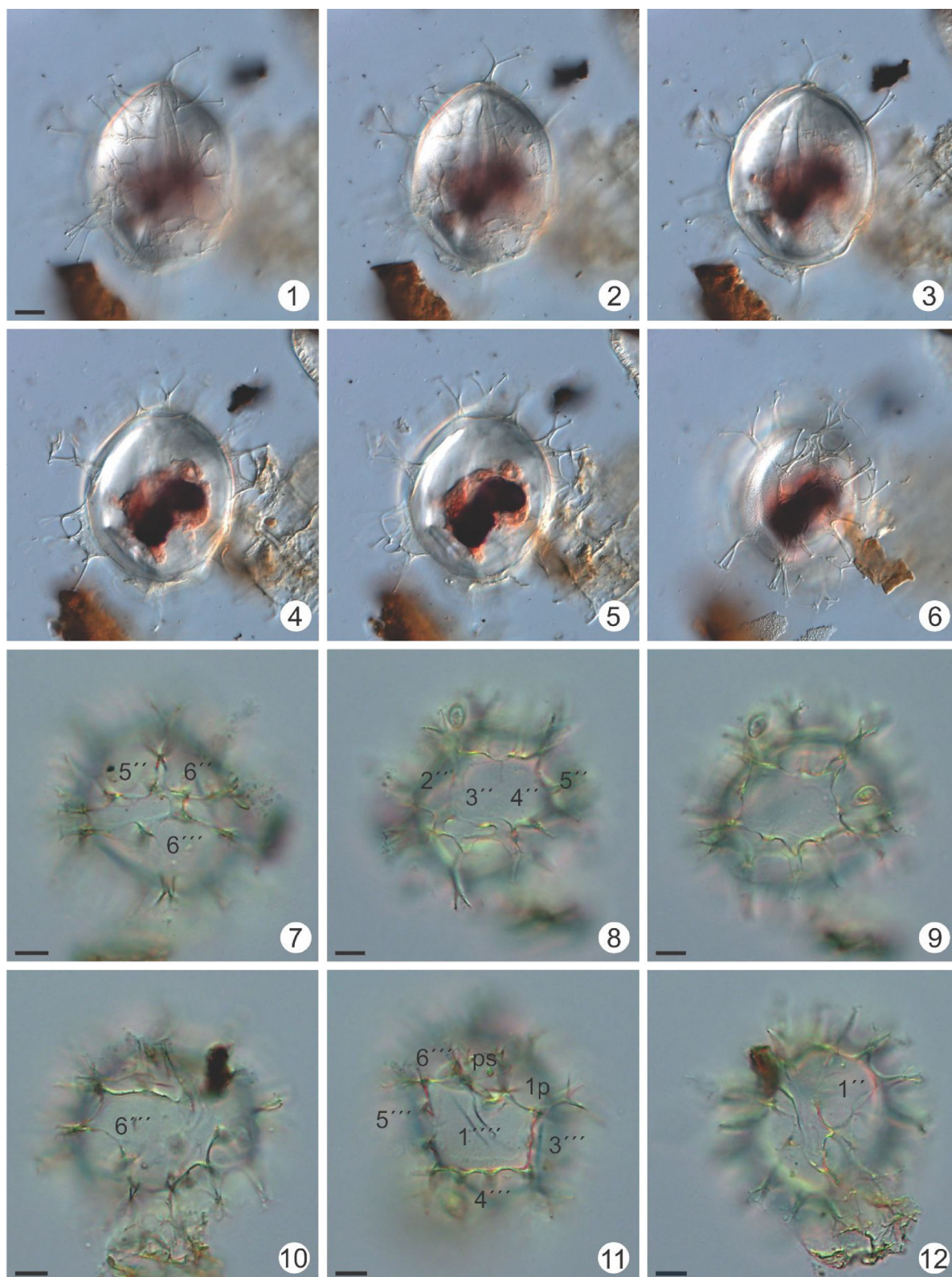


Plate 1. *Hiddenocysta matsuoekae* gen. et sp. nov. from core 2012002PGC133. 1–6. Forma 1; Holotype, Kyuquot Sound, UVic 2015-594-2, EF Q42/1. High to low focus. 7–12. Forma 1, Kyuquot Sound, manually picked from UVic 2015-609 residue, with indication of tabulation; 8 and 9 show the archeopyle. Scale bar = 10 μm.

high-magnification SEM micrographs of broken processes of Forma 1 (see Plate 3, figure 6, indicated by an arrow), eight holes are visible, spread more or less evenly along the width of the process. It is unclear whether these are small bubble-like structures or canals running along the length of the

processes. An apical boss is occasionally observed (Plate 2, figures 2, 8), but appears not to be diagnostic. The cysts are often collapsed, folded and torn in palynologically prepared slides, which can also be observed when manipulating cysts (Plate 2; Plate 3, figures 4, 9, 10).

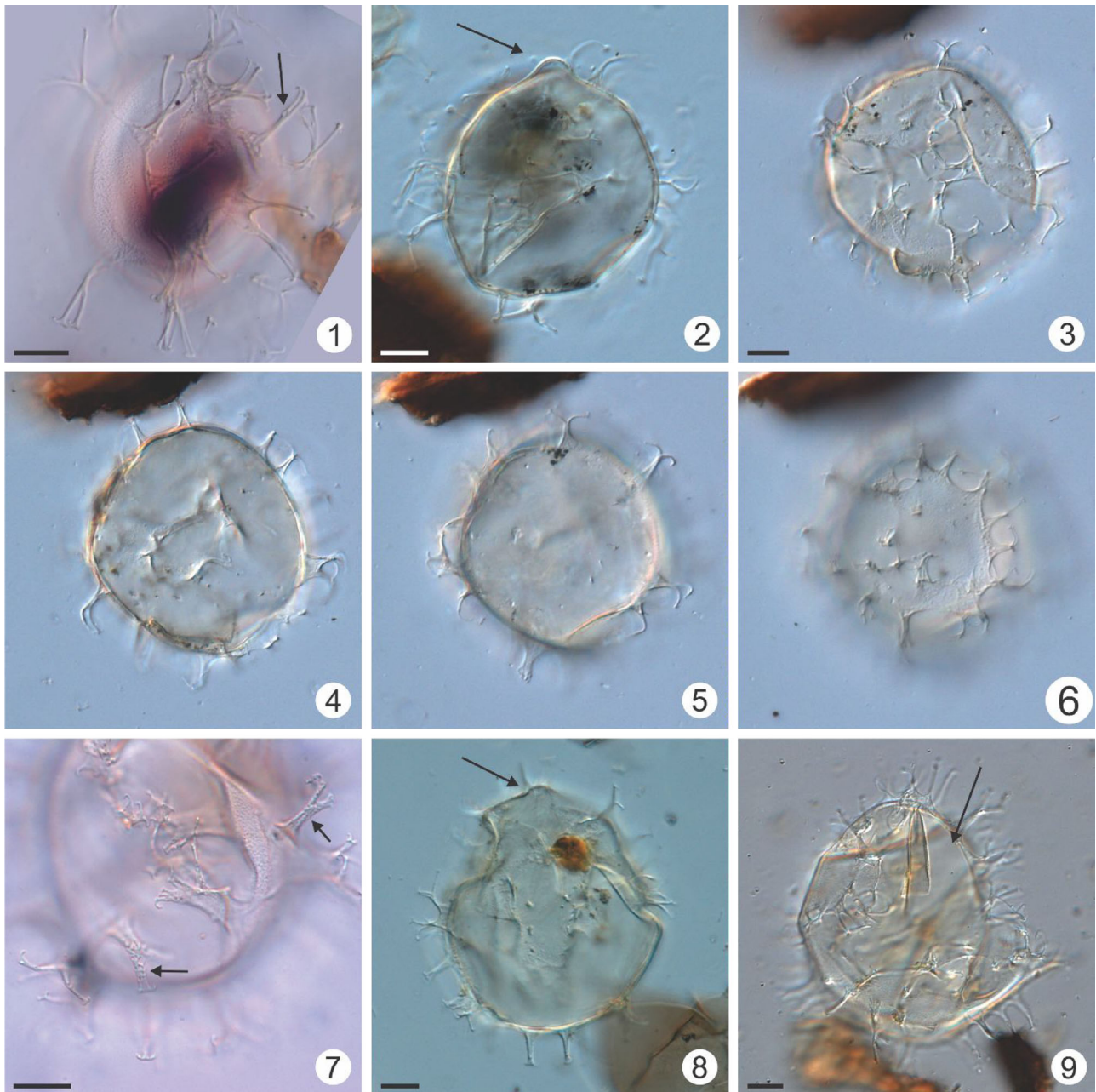


Plate 2. 1–9. *Hiddenocysta matsuokae* gen. et sp. nov. from core 2012002PGC133. 1–2: Forma 1. 1: holotype, Kyuquot Sound, UVic 2015-594-2, EF Q42/1; arrow is pointing at vacuole; 2: UVic 2015-607-2, optical section, apical boss is marked by arrow. 3–9: Forma 2. 3–6: UVic 2015-596-2: high to low focus; 7: UVic 2015-596-2, focus on numerous vacuoles, indicated by arrows. 8: UVic 2015-607-2, arrow indicating apical boss. 9: UVic 2015-613-2, possible archeopyle is indicated by arrow. Scale bars = 10 μ m.

Remarks. Two end members of this species were distinguished based on the process type. Specimens were observed bearing both types of processes, suggesting intra-specific variation. The species described here is identical to the specimens depicted by Dobell and Taylor (1981) based on size, tabulation, wall structure and the structure and organization of the processes.

Comparison. As it is the only species described in the genus *Hiddenocysta*, the comparison is as for the genus. The processes of *H. matsuokae* Forma 1 are often more slender than those of most *Spiniferites* species (Limoges et al. 2018; Mertens et al. 2018). *Spiniferites solidago* of de Verteuil and

Norris (1996) has a comparable shape and the same characteristic vacuoles in the processes. However, this species differs from *Hiddenocysta matsuokae* by a 1 P archeopyle, its wall ornamentation, its characteristic alveoles in the cyst wall and process terminations that are more simply bifurcate and do not resemble tendrils. *Spiniferites lazus* has similar perforations at the process base, but has a more elongated central body and a 1 P archeopyle (Reid 1974; Gurdebeke et al. 2018a).

Distribution and biostratigraphy. The species is described here from estuarine waters of southwestern British Columbia and Vancouver Island (Canada), specifically from surface

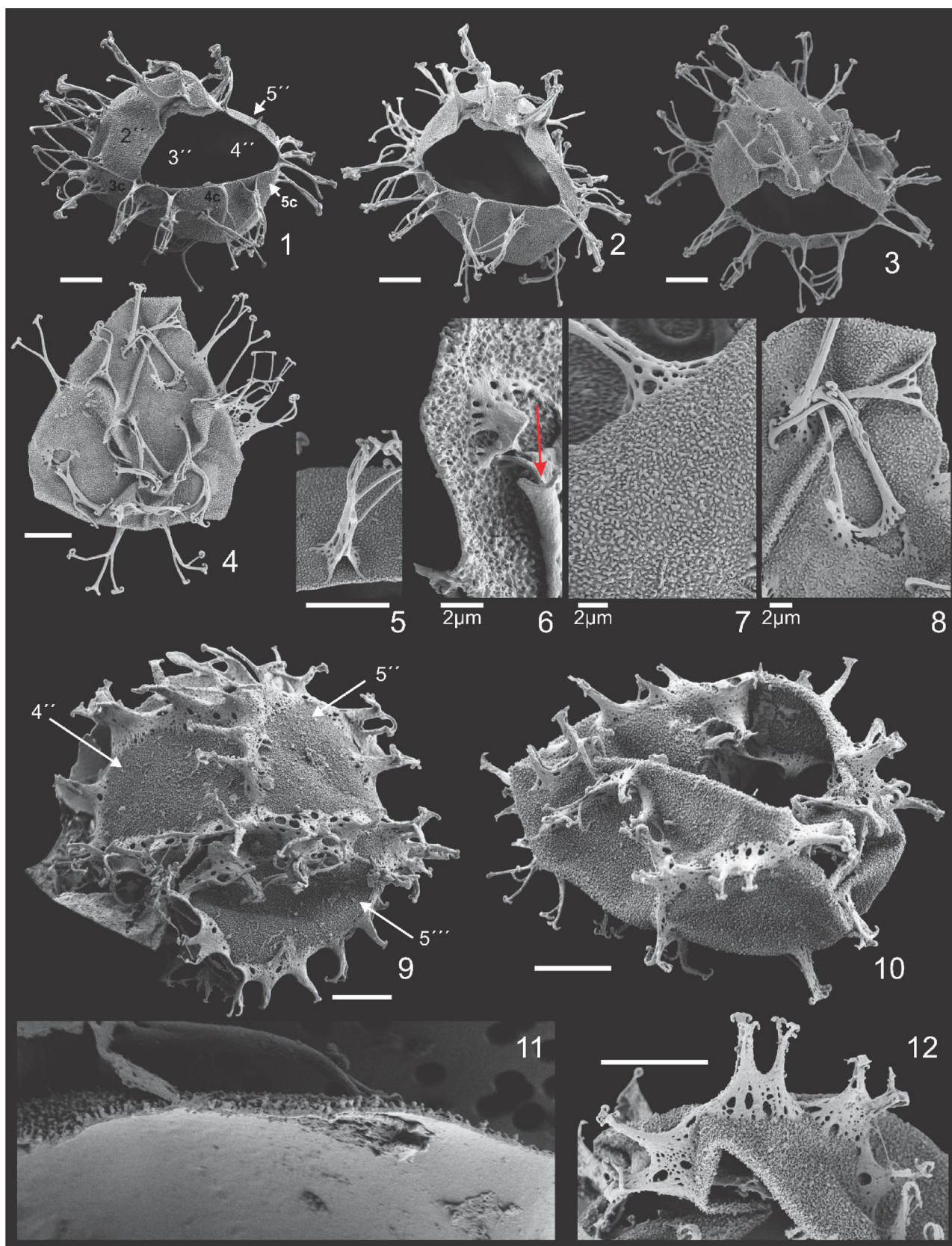


Plate 3. Field-emission scanning electron microscope images of *Hiddenocysta matsuoekae* sp. nov., Kyuquot Sound core 2012002PGC133, UVic 2015-609. 1–8. Forma 1; 1–3: ambitus with archeopyle and showing the tabular arrangement of the processes; 4: typical crushed specimen; 5: detail of process; 6: detail of broken process, with arrow indicating small structures within the process; 7–8: details of wall and process structures. 9–12. Forma 2; 9–10: crushed ambitus, showing the tabular arrangement of the processes, which are often connected by low crests and bear intergonals; 11: detail of wall structure; 12: detail of processes. Tabulation is indicated in 1 and 9. Scale bars = 10 μ m unless otherwise indicated.

sediments of Hidden Basin (~6 m water depth, sea surface temperature (SST) 7–16 °C, sea surface salinity (SSS) 24–32 PSU; e.g. Gurdebeke et al. 2018b) and as a present to rare species (up to 1.6% of the assemblage; terminology of Pospelova et al. 2004) throughout Holocene sediments of

Kyuquot Sound (~150 m water depth; Figure 2; Table S1). A specimen with endospore/cell content (Plate 1, figures 1–6) was found in the early Holocene, ~11 ka (UVic 2015-594). This excludes reworking of the cysts, which is also improbable because of the local geology and hydrology of the fjord system (e.g. Muller et al. 1974) and because Dobell and Taylor (1981) successfully hatched similar cysts. The species was also observed in Ise Bay, Central Japan (34°57.24'N, 136°43.84'E; 25 m water depth; SST 10–23 °C and SSS 33–34 PSU; e.g. Narita et al. 2006; K. Matsuoka, pers. comm.). From these limited observations, *H. matsuokae* occurs in ice-free estuaries of up to 150 m water depth in the temperate North Pacific. At present it is not clear whether formas 1 and 2 represent ecotypes, and if so, what the driving environmental parameter is. It is observed, however, that at the majority of the stratigraphic levels at which *H. matsuokae* is recorded in

Table 1. Morphometrics of *Hiddenocysta matsuokae* sp. nov.

	Min	Max	Average	Median	SD	N
a) Overall						
Central body diameter (µm)	45.4	69.8	58.1	56.9	7.1	20
Process length (µm)	6.6	24.3	13.5	12.6	4.5	40
b) Forma 1						
Central body diameter (µm)	45.4	63.4	55.4	55.1	5.6	10
Process length (µm)	12.5	24.3	17.1	16.2	3.1	20
c) Forma 2						
Central body diameter (µm)	47.8	69.8	60.9	64.6	7.4	10
Process length (µm)	6.6	12.6	9.8	9.9	1.9	20

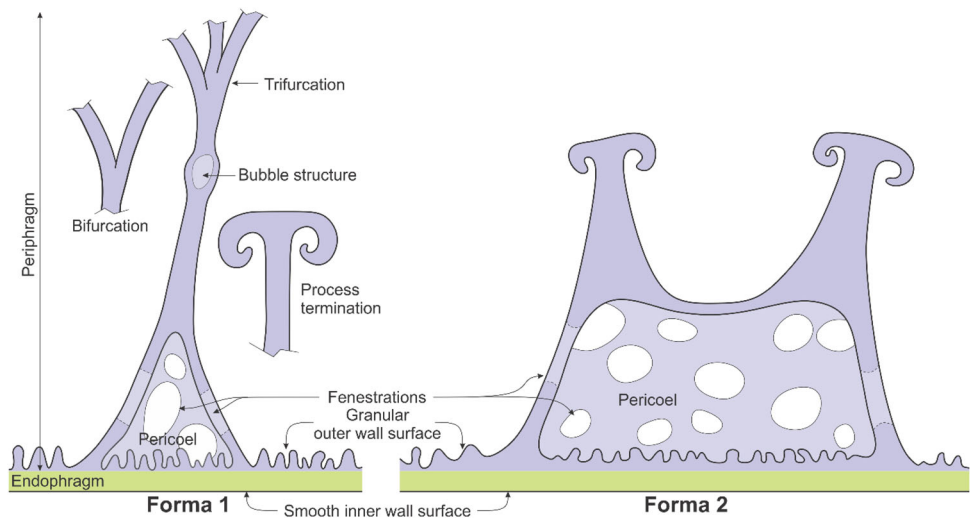


Figure 3. Schematic representation of a cross section of wall and process structure of *Hiddenocysta matsuokae* sp. nov., Forma 1 (left) and Forma 2 (right).

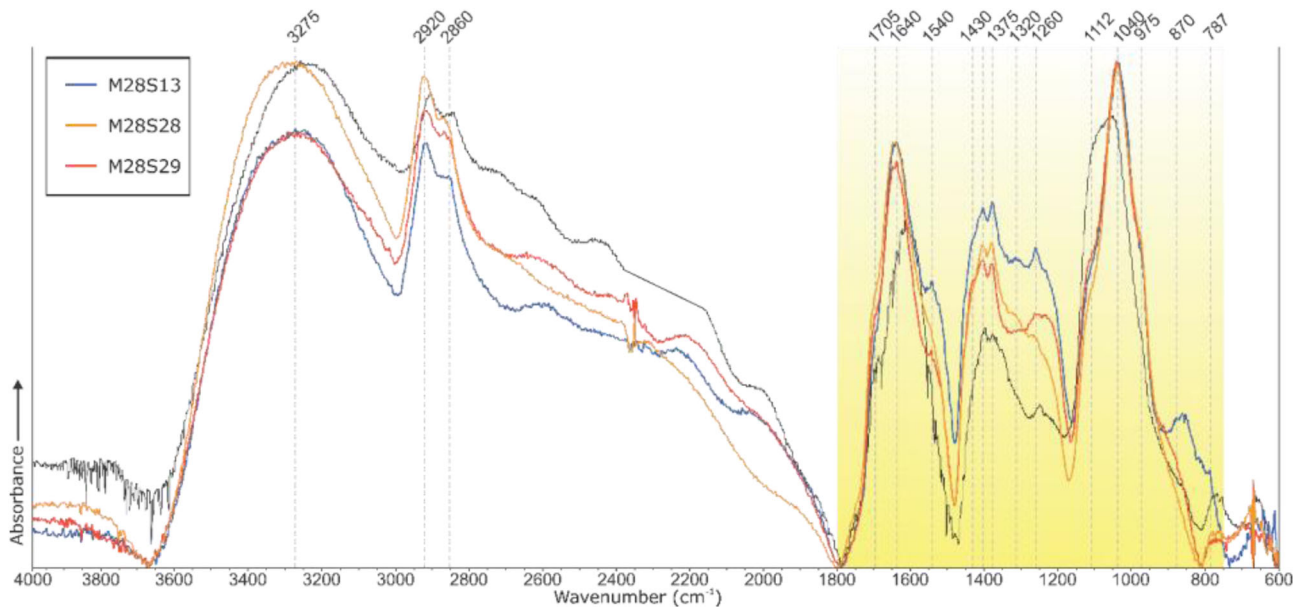


Figure 4. Micro-Fourier transform infrared spectra of three specimens of *Hiddenocysta matsuokae* sp. nov., with the major absorption peaks indicated (see Table 2). For comparison, the thin black line is the spectrum of *Spiniferites elongatus* from Dee Estuary (UK) described by Gurdebeke et al. (2018a). The shaded region delineates the fingerprint region.

the Kyuquot Sound core, it is dominated by one forma (Figure 2).

Motile stage equivalent. Dobell and Taylor (1981) incubated cysts from surface sediments in Hidden Basin, which yielded dinoflagellates assignable to *Gonyaulax*, one of which they considered perhaps conspecific with *Gonyaulax alaskensis*, originally described by Kofoed (1911) and later restudied by Borgese (1987). Dobell and Taylor (1981) did note significant differences between their *Gonyaulax* sp. 1 and *Gonyaulax alaskensis*, particularly in size and cingular

displacement. A relationship to *G. alaskensis* is interesting and would support a separate classification of this group of species from other *Gonyaulax*, initially proposed by Kofoed (1911). Kofoed (1911) placed *G. alaskensis* with *G. fragilis* in the subgenus *Steiniella*, separate from the typical *Gonyaulax* that have been related to *Spiniferites*. These latter were placed in the *spinifera* group of the subgenus *Gonyaulax*. Molecular phylogenies support such a separation: *G. fragilis* from the subgenus *Steiniella* (there is no sequence for *G. alaskensis* yet) is placed separately from a clade containing species from the *spinifera* group of the subgenus *Gonyaulax*, *G. spinifera* (sensu stricto) and *G. digitale* (Escalera et al. 2018; however see also Carbonell-Moore and Mertens 2019). However, the situation is more complicated since *G. polygramma* is in the same clade as *G. fragilis* in the phylogenies; and Kofoed (1911) placed *G. polygramma* in the *polygramma* group of the subgenus *Gonyaulax*. It is also of interest to note that *Ataxiodinium choanophorum* can be found in the same clade as *G. fragilis* and *G. polygramma* (Mertens et al. 2017). New cyst-theca experiments with SEM observations and molecular phylogenetics are needed to establish the correct cyst-theca relationship of this and related species.

Table 2. Micro-Fourier transform infrared assignments of functional groups present in the spectra of *Hiddenocysta matsuoekae* sp. nov.

Wavenumber (cm ⁻¹)	Assignment	Comment
3265–3285	vO-H	
2920	vC-H	
2865	vC-H	
1705	vC=O	Shoulder
1640	vC=O	
1540	Amide II	
1430	δCH ₂	
1375	δCH + δC-CH ₃	
1280, 1320	δOH	
1112	vC-O	Glucose ring, shoulder
1040	vC-O	

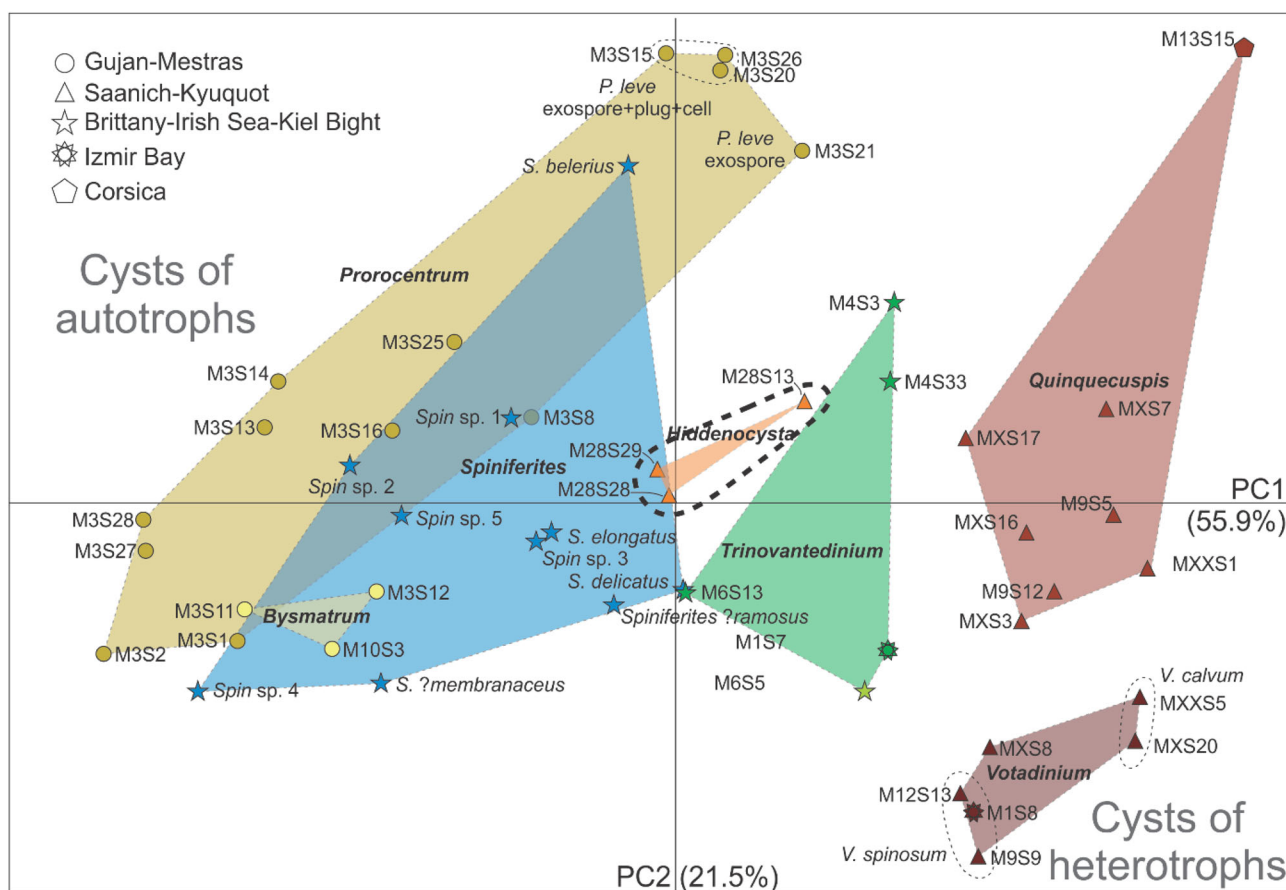


Figure 5. Principal component analysis (PCA) plot (PC1-2) of fingerprint region of three *Hiddenocysta matsuoekae* sp. nov. spectra (M28S13, M28S28 and M28S29) compared with cyst wall spectra at various locations from earlier studies: 13 *Prorocentrum leve* spectra (Mertens et al. 2017), three *Bysmatrum subsalsum* spectra (Luo et al. 2018), eight *Spiniferites* spectra (one *S. belerius*, one *S. ?membranaceus*, three *S. ?ramosus*, one *S. delicatus*, one *S. elongatus*, five *Spiniferites* spp.; Gurdebeke et al. 2018a), six *Votadinium* spectra (three *V. spinosum*, one *V. pontifossatum*, two *V. calvum*; Gurdebeke et al. 2019a), eight *Quinquecuspis concreta* spectra (Gurdebeke et al. 2019a) and five *Trinovantedinium* spectra (one *T. pallidifulum*, four *T. applanatum*; Gurdebeke et al. 2019a).

3.2. Chemical composition

Micro-FTIR spectra were retrieved from three specimens from the core-top sediment sample in Kyuquot Sound (UVic 2015-684) (Figure 4). The absorption peak assignments are given in Table 2. The spectra show a broad absorption peak around 3275 cm^{-1} , characteristic of O-H stretching vibrations, and two peaks at 2920 and 2860 cm^{-1} (C-H stretching). Within the fingerprint region, the main absorptions are centered at $\sim 1040\text{ cm}^{-1}$, with a second maximum around 1640 cm^{-1} . The absorption spectra most closely resemble those of *Spiniferites* species (Gurdebeke, et al. 2018a; the spectrum of *S. elongatus* is shown in Figure 4 for comparison) but differ in having a pronounced shoulder at 1540 cm^{-1} and in the region between 1500 and 1185 cm^{-1} .

In all, the spectra reveal a cyst wall composition similar to those recorded for autotrophic taxa (e.g. Mertens et al. 2015, 2017; Gurdebeke, et al. 2018a; Luo et al. 2018), which suggests a similar trophic preference for the motile stage that produces *Hiddenocysta matsuoekae* sp. nov. This is in line with the morphology-based placement of this species with the Gonyaulacaceae, in which the majority of the species are autotrophic (e.g. Gaines and Elbrächter 1987; Gómez 2012b). In a PCA analysis comparing data from earlier studies (Gurdebeke, et al. 2018a; Luo et al. 2018; Gurdebeke et al. 2019a; Gurdebeke et al. 2019b), the spectra for *H. matsuoekae* form a distinct cluster confirming quantitatively the chemical distinctiveness of this species (Figure 5). Also, the three spectra of *H. matsuoekae* line up with other spectra of cysts of autotrophic taxa (*Spiniferites*, *Bystrum*, *Prorocentrum*) and are well separated from spectra of typical brown cysts of heterotrophic taxa (*Quinquecuspis*, *Votadinium*, *Trinovantedinium pallidifulum*) (Figure 5). The spectra for *Trinovantedinium applanatum* cysts are positioned intermediately (Figure 5). These transparent cysts are produced by a heterotrophic species and were shown to have an aberrant wall composition compared with other cysts of heterotrophic dinoflagellates (Gurdebeke et al. 2019a). In all, the PCA analysis supports autotrophy for *Hiddenocysta matsuoekae*.

4. Conclusions

A new gonyaulacoid dinoflagellate cyst genus and species, *Hiddenocysta matsuoekae* gen. nov. et sp. nov., is described from Holocene sediments from Kyuquot Sound (Vancouver Island, British Columbia, Canada). The species is presently known only from a few reports from estuarine sites in the northern Pacific Ocean. Cyst wall chemistry reveals a distinct macromolecular composition and supports the placement of *H. matsuoekae* as an autotrophic species within the Gonyaulacaceae. These results once more show the utility of micro-FTIR in the study of dinoflagellate cyst taxonomy and ecology. New incubation experiments and sequencing (e.g. ribosomal DNA sequences) are required to further evaluate the relationship with other gonyaulacoid species.

Acknowledgements

We are grateful to Dr. Audrey Dallimore for the sediment core collection and for sharing this material with us. Victor Pospelov and Alison Thomas

are thanked for their help with sediment sampling and palynological preparation at the University of Victoria. VP acknowledges funding support from the Natural Science and Engineering Research Council of Canada (NSERC) Discovery Grant. The Regional Council of Brittany, the General Council of Finistère and the urban community of Concarneau-Cornouaille-Agglomération are acknowledged for the funding of the Sigma 300 FE-SEM of the station of Marine Biology in Concarneau that was used in this study. The Research Foundation Flanders (Fonds Wetenschappelijk Onderzoek, Hercules Foundation) is thanked for funding the micro-FTIR facility (FT-IMAGER, project number AUG/13/16), and Henk Vrielinck is thanked for technical assistance and discussion of the micro-FTIR data. We thank Dr. Kazumi Matsuoka for sharing his observations from Japanese coastal waters. Stijn De Schepper and two anonymous referees are gratefully acknowledged for reviewing the manuscript.

Disclosure statement

No potential conflict of interest was reported by the authors.

Notes on contributors



Pieter R. Gurdebeke is associated with the Department of Geology of Ghent University (Belgium) where he received his PhD in geology in 2019. His research interests include the taxonomy, ecology, chemical composition and paleoecological application of late Quaternary dinoflagellate cysts and other palynomorphs in Northern Hemisphere estuaries.



Kenneth Neil Mertens is a researcher at Ifremer, Laboratoire Environnement Ressources Bretagne Occidentale (LER BO), Concarneau, France. He received his PhD in 2009 from Ghent University. His research interests are the taxonomy, evolution, phylogeny and biogeography of dinoflagellates, and the palaeoceanographical application of dinoflagellate cysts, particularly in the Quaternary and Neogene.



Vera Pospelova is a professor in the Department of Earth and Environmental Sciences at the University of Minnesota (USA). Previously, she was a professor at the School of Earth and Ocean Sciences at the University of Victoria (Canada) from 2005 to 2019. Vera received her PhD in 2003 from McGill University (Canada) and held a FCAR postdoctoral fellowship at the University of

Victoria from 2003 to 2005. Vera's research interests include: taxonomy of late Quaternary dinoflagellate cysts; cyst production, ecology, and seasonal and annual dynamics in coastal waters; applications of dinoflagellate cysts as indicators of water quality conditions, with an emphasis on pollution and eutrophication in North American estuaries; and high-resolution paleoceanographic reconstructions using sedimentary archives.



Pjotr Meyvisch is a teaching assistant and PhD candidate (MSc in geology in 2018) at the Department of Geology of Ghent University. His research focuses on the development and application of micro-FTIR spectroscopy as a chemotaxonomical tool, applied on dinoflagellate cysts and other palynomorphs.



Kara Bogus is a staff scientist with the International Ocean Discovery Program (IODP) at Texas A&M University (College Station, TX, USA). She earned her PhD (marine geosciences) from the University of Bremen (Bremen, Germany). Her research interests include using organic-walled dinoflagellate cysts in palaeoceanographic studies, and cyst wall chemical composition and its

application to both environmental reconstructions and diagenesis of sedimentary organic carbon.



Stephen Louwye is a professor of palaeobotany and palynology at Ghent University, Belgium. He received his MSc in 1984 and his PhD in 1990, both from Ghent University. After several postdoctoral positions he was appointed professor in 2002. His research interests are the Neogene palynology of the North Atlantic and the North Sea Basin, sequence stratigraphy and palaeoclimatology.

ORCID

Pieter R. Gurdebeke  <http://orcid.org/0000-0003-1425-8515>
 Kenneth Neil Mertens  <http://orcid.org/0000-0003-2005-9483>
 Pjotr Meyvisch  <https://orcid.org/0000-0002-1270-2152>
 Kara Bogus  <http://orcid.org/0000-0003-4690-0576>
 Vera Pospelova  <https://orcid.org/0000-0003-4049-8133>
 Stephen Louwye  <https://orcid.org/0000-0003-4814-4313>

References

- Bogus K, Mertens KNM, Lauwaert J, Harding IC, Vrielinck H, Zonneveld K, Versteegh G. 2014. Differences in the chemical composition of organic-walled dinoflagellate resting cysts from phototrophic and heterotrophic dinoflagellates. *Journal of Phycology*. 50(2):254–266.
- Borgese MB. 1987. Two armored dinoflagellates from the southwestern Atlantic Ocean: a new species of *Protoperidinium* and a first record and redescription for *Gonyaulax alaskensis* Kofoid. *The Journal of Protozoology*. 34(3):332–337.
- Bringué M, Pospelova V, Calvert SE, Enkin RJ, Lacourse T, Ivanochko T. 2016. High resolution dinoflagellate cyst record of environmental change in Effingham Inlet (British Columbia, Canada) over the last millennium. *Palaeogeography, Palaeoclimatology, Palaeoecology*. 441: 787–810.
- Bruker. 2014. OPUS Spectroscopy Software User Manual. Bruker Optik GmbH, Ettlingen.
- Carbonell-Moore MC, Mertens KN. 2019. Should *Gonyaulax hyalina* and *Gonyaulax fragilis* (Dinophyceae) remain two different taxa? *Phycologia*. 58(6):685–689.
- Cárdenas G, Cabrera G, Taboada E, Miranda SP. 2004. Chitin characterization by SEM, FTIR, XRD, and ¹³C cross polarization/mass angle spinning NMR. *Journal of Applied Polymer Science*. 93:1876–1885.
- Chomérat N, Couté A. 2008. *Protoperidinium bolmonense* sp. nov. (Peridinales, Dinophyceae), a small dinoflagellate from a brackish hypereutrophic lagoon (South of France). *Phycologia*. 47(4):392–403.
- Colthup NB, Daly LH, Wiberley SE. 1990. Introduction to Infrared and Raman Spectroscopy, 3rd ed., San Diego: Academic Press; 547 pp.
- Davey RJ. 1979. Two new early Cretaceous dinocyst species from the northern North Sea. *Palaeontology*. 22:427–437.
- de Verteuil L, Norris G. 1996. Miocene dinoflagellate stratigraphy and systematics of Maryland and Virginia. *Micropaleontology*. 42:i–172.
- Dobell PER. 1978. A study of dinoflagellate cysts from Recent marine sediments of British Columbia [Unpublished MSc thesis]. University of British Columbia.
- Dobell PER, Taylor F. 1981. Viable *Spiniferites* cysts with 2P archeopyles from Recent marine sediments, British Columbia. *Palynology*. 5(1): 99–106.
- Duxbury S. 1983. A study of dinoflagellate cysts and acritarchs from the Lower Greensand (Aptian to Lower Albian) of the Isle of Wight, southern England. *Palaeontographica Abteilung B*. 186:18–80.
- Escalera L, Italiano A, Pistocchi R, Montresor M, Zingone A. 2018. *Gonyaulax hyalina* and *Gonyaulax fragilis* (Dinoflagellata), two names associated with ‘mare sporco’, indicate the same species. *Phycologia*. 57(4):453–464.
- Evitt WR. 1985. Sporopollenin dinoflagellate cysts. Their morphology and interpretation. Dallas: American Association of Stratigraphic Palynologists; 333 p.
- Feist-Burkhardt S, Monteil E. 2001. Gonyaulacacean dinoflagellate cysts with multi-plate precingular archaeopyle. *Neues Jahrbuch für Geologie und Paläontologie Abhandlungen*. 219(1–2):33–81.
- Fenton JPG, Neves R, Piel KM. 1980. Dinoflagellate cysts and acritarchs from upper Bajocian to middle Bathonian strata of central and southern England. *Palaeontology*. 23:151–170.
- Fensome RA, Taylor FJR, Norris G, Sarjeant WAS, Wharton DI, Williams GL. 1993. A classification of fossil and living dinoflagellates. *Micropaleontology Special Publication*. 7:1–245.
- Gaines G, Elbrächter M. 1987. Heterotrophic nutrition. In: Taylor FJR, editor. *The Biology of Dinoflagellates*. Hoboken, NJ: Blackwell; p. 398–503.
- Gitmez GU. 1970. Dinoflagellate cysts and acritarchs from the basal Kimmeridgian (Upper Jurassic) of England, Scotland and France. *Bulletin of the British Museum of Natural History (Geology)*. 18: 231–331.
- Gómez F. 2012a. A checklist and classification of living dinoflagellates (Dinoflagellata, Alveolata). *CICIMAR Oceanides*. 27:65–140.
- Gómez F. 2012b. A quantitative review of the lifestyle, habitat and trophic diversity of dinoflagellates (Dinoflagellata, Alveolata). *Systematics and Biodiversity*. 10(3):267–275.
- Gurdebeke PR, Mertens KN, Bogus K, Marret F, Chomérat N, Vrielinck H, Louwye S. 2018a. Taxonomic re-investigation and geochemical characterization of Reid’s (1974) species of *Spiniferites* from holotype and topotype material. *Palynology*. 42 (suppl 1):93–110.
- Gurdebeke PR, Pospelova V, Mertens KN, Dallimore A, Chana J, Louwye S. 2018b. Diversity and distribution of dinoflagellate cysts in surface sediments from fjords of western Vancouver Island (British Columbia, Canada). *Marine Micropaleontology*. 143:12–29.
- Gurdebeke PR, Mertens KN, Pospelova V, Matsuoka K, Li Z, Gribble KE, Gu H, Bogus K, Vrielinck H, Louwye S. 2019a. Taxonomic revision, phylogeny, and cyst wall composition of the dinoflagellate cyst genus *Votadinium* Reid (Dinophyceae, Peridinales, Protoperidiniaceae). *Palynology*. 44(2):310–335.
- Gurdebeke PR, Mertens KN, Pospelova V, Van Nieuwenhove N, Louwye S. 2019b. *Islandinium pacificum* sp. nov., a new dinoflagellate cyst from the upper Quaternary of the northeast Pacific. *Palynology*. 44(1): 80–93.
- Gurdebeke PR. 2019. Holocene dinoflagellate cysts and other palynomorphs from Northern Hemisphere estuaries. Taxonomy, distribution, geochemistry and paleoecological application [PhD thesis]. Ghent, Belgium: Ghent University.
- Hammer O, Harper DAT, Ryan PD. 2001. PAST: Paleontological statistics software package for education and data analysis. *Palaeontologica Electronica*. 4:9 pp.
- Head MJ. 1996. Modern dinoflagellate cysts and their biological affinities. Chapter 30. In: Jansonius J, McGregor DC, editors. *Palynology: principles and applications*. Vol. 3. Dallas: American Association of Stratigraphic Palynologists Foundation; p. 1197–1248.
- Kofoid CA. 1911. Dinoflagellata of the San Diego Region, IV. The genus *Gonyaulax* with notes on the skeletal morphology. University of California Publications in Zoology. 8:187–287.
- Kokinos JP, Eglinton TI, Goñi MA, Boon JJ, Martoglio PA, Anderson DM. 1998. Characterization of a highly resistant biomacromolecular material in the cell wall of a marine dinoflagellate resting cyst. *Organic Geochemistry*. 28(5):265–288.
- Krepakevich A, Pospelova V. 2010. Tracing the influence of sewage discharge on coastal bays of Southern Vancouver Island (BC, Canada) using sedimentary records of phytoplankton. *Continental Shelf Research*. 30(18):1924–1940.
- Kumar A, Patterson RT. 2002. Dinoflagellate cyst assemblages from Effingham Inlet, Vancouver Island, British Columbia, Canada. *Palaeogeography, Palaeoclimatology, Palaeoecology*. 180(1–3):187–206.
- Limoges A, Londeix L, Mertens KN, Rochon A, Pospelova V, Cuéllar T, de Vernal A. 2018. Identification key for Pliocene and Quaternary *Spiniferites* taxa bearing intergonal processes based on observations from estuarine and coastal environments. *Palynology*. 42 (suppl 1): 72–88.

- Londeix L, Zonneveld K, Masure E. 2018. Taxonomy and operational identification of Quaternary species of *Spiniferites* and related genera. *Palynology*. 42(suppl 1):45–71.
- Luo Z, Lim ZF, Mertens KN, Gurdebeke PR, Bogus K, Carbonell-Moore MC, Vrielinck H, Leaw CP, Lim PT, Chomérat N, et al. 2018. Morpho-molecular diversity and phylogeny of *Bysmatrum* (Dinophyceae) from the South China Sea and France. *European Journal of Phycology*. 53(3):318–335.
- Masure E. 1986. *Corradinisphaeridium*, nouveau genre de dinoflagellés du Sénonien d'Italie et de France. *Revue de Micropaléontologie*. 29: 109–119.
- Mertens KN, Carbonell-Moore C. 2018. Introduction to *Spiniferites* Mantell 1850 special issue. *Palynology*. 42 (suppl 1):1–9.
- Mertens KN, Takano Y, Gu H, Bagheri S, Pospelova V, Pieńkowski AJ, Leroy S, Matsuoka K. 2017. Cyst-theca relationship and phylogenetic position of *Impagidium caspiense* incubated from Caspian Sea surface sediments: evidence for heterospory within gonyaulacoid dinoflagellates. *Journal of Eukaryotic Microbiology*. 64(6):829–842.
- Mertens KN, Yamaguchi A, Kawami H, Ribeiro S, Leander BS, Price AM, Pospelova V, Ellegaard M, Matsuoka K. 2012. *Archaeperidinium saanichi* sp. nov.: a new species based on morphological variation of cyst and theca within the *Archaeperidinium minutum* Jorgensen 1912 species complex. *Marine Micropaleontology*. 96–97:48–62.
- Mertens KN, Van Nieuwenhove N, Gurdebeke PR, Aydin H, Bogus K, Bringué M, Dale B, De Schepper S, de Vernal A, Ellegaard M, et al. 2018. Summary of round table discussions about *Spiniferites* and *Achomosphaera* occurring in Pliocene to modern sediments. *Palynology*. 42(suppl 1):10–44.
- Mertens KN, Yamaguchi A, Takano Y, Pospelova V, Head MJ, Radi T, Pieńkowski AJ, de Vernal A, Kawami H, Matsuoka K. 2013. A new heterotrophic dinoflagellate from the North Pacific, *Protoperidinium fukuyoi*: cyst-theca relationship, phylogeny, distribution and ecology. *Journal of Eukaryotic Microbiology*. 60(6):545–563.
- Mertens KN, Wolny J, Carbonell-Moore C, Bogus K, Ellegaard M, Limoges A, de Vernal A, Gurdebeke P, Omura T, Al-Muftah A, Matsuoka K. 2015. Taxonomic re-examination of the toxic armored dinoflagellate *Pyrodinium bahamense* Plate 1906: Can morphology or LSU sequencing separate *P. bahamense* var. *compressum* from var. *bahamense*? *Harmful Algae*. 41:1–24.
- Mudie PJ, Rochon A, Levac E. 2002. Palynological records of red-tide producing species in Canada: past trends and implications for the future. *Palaeogeography, Palaeoclimatology, Palaeoecology*. 180(1–3): 159–186.
- Muller JE, Northcote KE, Carlisle D. 1974. Geology and mineral deposits of Alert - Cape Scott map-area Vancouver Island, British Columbia. Geological Survey of Canada, Paper 74-8, 86 pp.
- Narita T, Ganmanee M, Sekiguchi H. 2006. Population dynamics of a dragonet *Repomucenus valenciennesi* in Ise Bay, central Japan. *Nippon Suisan Gakkaishi*. 72(5):860–872.
- Patterson RT, Prokoph A, Kumar A, Chang AS, Roe HM. 2005. Late Holocene variability in pelagic fish scales and dinoflagellate cysts along the west coast of Vancouver Island, NE Pacific Ocean. *Marine Micropaleontology*. 55(3–4):183–204.
- Patterson RT, Swindles GT, Roe HM, Kumar A, Prokoph A. 2011. Dinoflagellate cyst-based reconstructions of mid to late Holocene winter sea-surface temperature and productivity from an anoxic fjord in the NE Pacific Ocean. *Quaternary International*. 235(1–2):13–25.
- Penaud A, Hardy W, Lambert C, Marret F, Masure E, Servais T, Siano R, Wary M, Mertens KN. 2018. Dinoflagellate fossils: Geological and biological applications. *Revue de Micropaléontologie*. 61(3–4):235–254.
- Pospelova V, Chmura GL, Walker HA. 2004. Environmental factors influencing the spatial distribution of dinoflagellate cyst assemblages in shallow lagoons of southern New England (USA). *Review of Palaeobotany and Palynology*. 128(1–2):7–34.
- Pospelova V, Esenkulova S, Johannessen SC, O'Brien MC, Macdonald RW. 2010. Organic-walled dinoflagellate cyst production, composition and flux from 1996 to 1998 in the central Strait of Georgia (BC, Canada): a sediment trap study. *Marine Micropaleontology*. 75(1–4):17–37.
- Price AM, Gurdebeke PR, Mertens KN, Pospelova V. 2016. Determining the absolute abundance of dinoflagellate cysts in recent marine sediments III: Identifying the source of *Lycopodium* loss during palynological processing and further testing of the *Lycopodium* marker-grain method. *Review of Palaeobotany and Palynology*. 226:78–90.
- Price AM, Pospelova V. 2011. High-resolution sediment trap study of organic-walled dinoflagellate cyst production and biogenic silica flux in Saanich Inlet (BC, Canada). *Marine Micropaleontology*. 80(1–2): 18–43.
- Radi T, Pospelova V, de Vernal A, Barrie JV. 2007. Dinoflagellate cysts as indicators of water quality and productivity in British Columbia estuarine environments. *Marine Micropaleontology*. 62(4):269–297.
- Schiøler P, Brinkhuis H, Roncaglia L, Wilson GJ. 1997. Dinoflagellate biostratigraphy and sequence stratigraphy of the Type Maastrichtian (Upper Cretaceous), ENCI Quarry, the Netherlands. *Marine Micropaleontology*. 31(1–2):65–95.
- Van Nieuwenhove N, Potvin E, Heikkilä M, Pospelova V, Mertens KN, Masure E, Kucharska M, Yang EJ, Chomérat N, Zajackowski M. 2018. Taxonomic revision of *Spiniferites elongatus* (the resting stage of *Gonyaulax elongata*) based on morphological and molecular analyses. *Palynology*. 42 (suppl 1):111–134.
- Versteegh GJM, Blokker P, Bogus K, Harding IC, Lewis J, Oltmanns S, Rochon A, Zonneveld K. 2012. Flash pyrolysis and infrared spectroscopy of cultured and sediment derived *Lingulodinium polyedrum* (Dinoflagellata) cyst walls. *Organic Geochemistry*. 43:92–102.
- Wilson GJ. 1973. Palynology of the middle Pleistocene Te Piki Bed, Cape Runaway, New Zealand. *New Zealand Journal of Geology and Geophysics*. 16(3):345–354.
- Zonneveld KAF, Versteegh GJM, de Lange GJ. 1997. Preservation of organic walled dinoflagellate cysts in different oxygen regimes: a 10,000 years natural experiment. *Marine Micropaleontology*. 29: 393–405.