

## **Molecular phylogeny of an ancient rodent family (Aplodontiidae)**

Authors: Piaggio, Antoinette J., Coghlan, Brett A., Miscampbell, Allyson E., Arjo, Wendy M., Ransome, Douglas B., et al.

Source: Journal of Mammalogy, 94(3) : 529-543

Published By: American Society of Mammalogists

URL: <https://doi.org/10.1644/12-MAMM-A-016.1>

---

BioOne Complete ([complete.BioOne.org](https://complete.BioOne.org)) is a full-text database of 200 subscribed and open-access titles in the biological, ecological, and environmental sciences published by nonprofit societies, associations, museums, institutions, and presses.

Your use of this PDF, the BioOne Complete website, and all posted and associated content indicates your acceptance of BioOne's Terms of Use, available at [www.bioone.org/terms-of-use](https://www.bioone.org/terms-of-use).

Usage of BioOne Complete content is strictly limited to personal, educational, and non - commercial use. Commercial inquiries or rights and permissions requests should be directed to the individual publisher as copyright holder.

---

BioOne sees sustainable scholarly publishing as an inherently collaborative enterprise connecting authors, nonprofit publishers, academic institutions, research libraries, and research funders in the common goal of maximizing access to critical research.

## Molecular phylogeny of an ancient rodent family (Aplodontiidae)

ANTOINETTE J. PIAGGIO,\* BRETT A. COGHLAN, ALLYSON E. MISCAMPBELL, WENDY M. ARJO, DOUGLAS B. RANSOME, AND CAROL E. RITLAND

United States Department of Agriculture, Wildlife Services, National Wildlife Research Center, Wildlife Genetics Lab, 4101 LaPorte Avenue, Fort Collins, CO 80521, USA (AJP, BAC)

Colorado State University, Department of Fish, Wildlife and Conservation Biology, 101 Natural Resources Building, Campus Delivery 1401, Fort Collins, CO 80523-1401, USA (BAC)

Genetic Data Centre, University of British Columbia, Department of Forest Sciences, 2424 Main Mall, Vancouver, British Columbia V6T 1Z4, Canada (AEM, CER)

United States Department of Agriculture, Wildlife Services, National Wildlife Research Center, Olympia Field Station, 9730-B Lathrop Industrial Drive, SW, Olympia, WA 98512, USA (WMA)

Present address of WMA: AGEISS Inc., 1401 Marvin Road NE, Suite 307 #422, Lacey, Washington 98516

British Columbia Institute of Technology, Fish, Wildlife, and Recreation Program, 3700 Willingdon Avenue, Burnaby, British Columbia V5G 3H2, Canada (DBR)

\* Correspondent: [toni.j.piaggio@aphis.usda.gov](mailto:toni.j.piaggio@aphis.usda.gov)

The family Aplodontiidae contains a single, monotypic extant genus, *Aplodontia* (mountain beaver), which was first described by Rafinesque in 1817. Phylogenetic studies have shown that it is the sister lineage to squirrels. *Aplodontia rufa* is endemic to the Pacific Northwest and ranges from central California to British Columbia, Canada. Currently, 7 described subspecies are recognized based on morphological taxonomic studies. In this study, mitochondrial and nuclear genes were sequenced to infer molecular phylogenies of *A. rufa*. One of the goals of this study was to use molecular data to test the current taxonomic hypothesis based on morphology. Another goal was to incorporate geographic information to elucidate distributions of major clades. Our results support the previously held subspecies designations based on morphological taxonomy, with 1 main exception: we determined that within *A. rufa*, the subspecies *A. rufa rainieri* and *A. rufa rufa* north of the Columbia River represent a single lineage and should revert to the name *A. rufa olympica*. Although we revised geographic boundaries for some groups (*A. r. rufa*, *A. r. olympica*, and *A. r. pacifica*), only the conservation status and management of *A. r. olympica* (previously 2 subspecies) in Canada may be affected. Our findings support the continued conservation efforts for the isolated and endangered lineages present in coastal California.

Key words: *Aplodontia*, control region, cytochrome *b*, growth hormone receptor, mountain beaver, phylogeny, taxonomy

© 2013 American Society of Mammalogists

DOI: 10.1644/12-MAMM-A-016.1

The mountain beaver, *Aplodontia rufa*, the sole extant species from a monotypic genus within the family Aplodontiidae, is endemic to the Pacific Northwest region of the United States and into Canada and has a limited distribution from southern British Columbia, Canada, into northern California (Hall 1981; Fig. 1). *A. rufa* is a semifossorial rodent weighing approximately 1 kg that tends to occupy moist environments or areas near water sources (Godin 1964; Hacker and Coblenz 1993). *Aplodontia* has limited renal function due to inefficient kidneys; this “primitive” structure is considered to be a physiological characteristic that limits its geographical distribution and provides evidence that this is a member of an ancient lineage (Pfeiffer et al. 1960). In fact, aplodontioids date

back to the late Oligocene (Shotwell 1958; Rensberger 1975; Vianey-Liaud 1985; Hopkins 2008) and recent molecular studies have shown modern Aplodontiidae to be sister to the Sciuridae (squirrel) clade (Huchon et al. 1999; Adkins et al. 2001; Herron et al. 2004).

Rafinesque (1817) first described *Anisonyx rufa* from accounts and specimens of the Lewis and Clark Expedition. Later this species was placed in the genus *Aplodontia* (Richardson 1829a) and subspecies were described as they



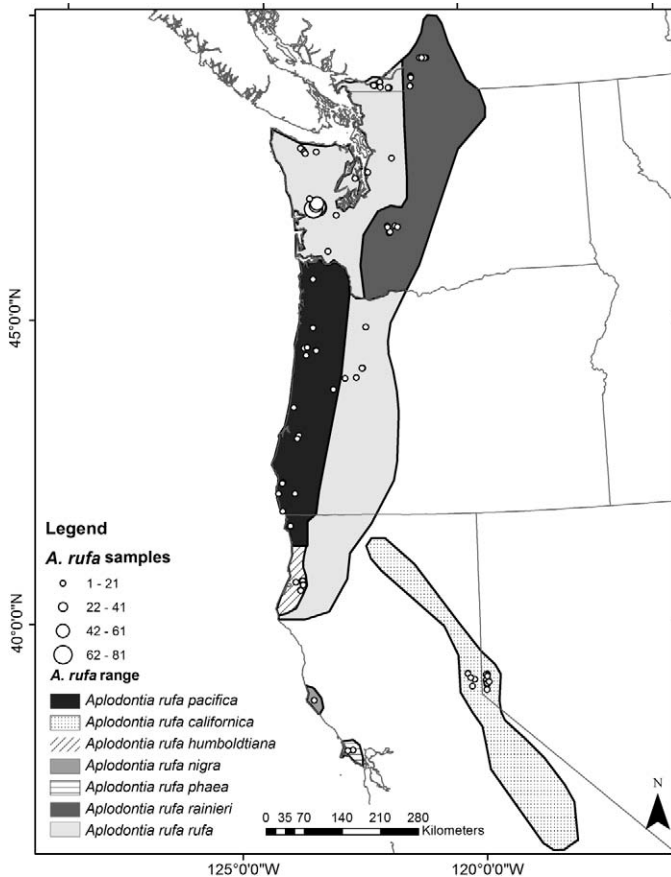


FIG. 1.—Map of distribution of *Aplodontia rufa* adapted from Hall (1981:map 233). Circles represent samples collected for this study. Circle size correlates to the number of samples collected. Some sampling locations are proximate to one another and therefore caused overlap of some circles or appear as a single circle in some cases.

were discovered (Richardson 1829b; Merriam 1886, 1899). Taylor (1918) revised the genus *Aplodontia* and designated a single species with 9 subspecies based on cranial and pelage characters. Geographic variation within *A. rufa* was investigated along the Columbia River system by Finley (1941); at that time he acknowledged pronounced skull and pelage differences between populations on either side of the river but did not revise subspecific designations. Dalquest and Scheffer (1945) followed up with a systematic study of *A. rufa* that focused on subspecies from Washington and reduced the number of subspecies there from 4 to 2. A later revision by Hall (1981) affirmed this classification, and thus there are currently 7 recognized subspecific lineages based on geographical distributions and morphological characters, principally pelage coloration and skull measurements (Dalquest and Scheffer 1945; Hall 1981; Fig. 1).

Several investigators of *Aplodontia* have remarked on variability in pelage and cranial features among populations (Taylor 1918; Finley 1941; Dalquest and Scheffer 1945). Pelage coloration has commonly been used as a taxonomic character but the variability of pelage within subspecies, populations, or even litters can make it an unreliable character

to infer taxonomic differences (Lindenmayer et al. 1995; Koyabu et al. 2008). Furthermore, some skull measurements used to differentiate subspecies of *A. rufa* were so variable that Dalquest and Scheffer (1945) deemed them to be useless. Therefore, the morphological characters currently used to delimit all subspecies of *A. rufa* may not be robust characters for inference of evolutionary lineages and hence taxonomy. We propose that taxonomic designations within this genus would benefit greatly from a molecular assessment.

Four of the 7 subspecies, *A. r. californica*, *A. r. rainieri*, *A. r. rufa*, and *A. r. pacifica*, have sizeable ranges; whereas the other 3 subspecies, *A. r. humboldtiana*, *A. r. nigra*, and *A. r. phaea*, have very restricted and isolated distributions (Fig. 1). One of these, *A. r. nigra*, is listed as endangered by the United States Fish and Wildlife Service (United States Fish and Wildlife Service 1991). *A. r. phaea* is considered a “species of special concern” by the state of California, whereas *A. r. humboldtiana* is found in greater densities and therefore does not have a conservation status designation (Williams 1986). The broader-ranging *A. r. rainieri* and *A. r. rufa* are classified as “vulnerable” and “critically imperiled, or imperiled,” respectively, in Canada (Gyug 2000); hence, they are managed following separate plans. Conversely, these 2 subspecies are managed as pest species in Washington and Oregon, where they rapidly colonize timber areas that have been recently harvested or reforested, or both (Hacker and Coblenz 1993; Arjo et al. 2007). The preferred diet of these subspecies of newly planted seedlings and even sapling-aged trees negatively impacts forest production (Cafferata 1992; Arjo 2010).

For conservation and management efforts to be successful, taxonomy and distribution must be clearly understood. In particular we were concerned about the taxonomic designations of subspecies in California (*A. r. humboldtiana*, *A. r. nigra*, and *A. r. phaea*) as well as the most northern subspecies in Canada (*A. r. rufa* and *A. r. rainieri*) because of their conservation status. Therefore, our primary goal was to use a molecular phylogenetic approach to test the current taxonomy of *A. rufa* (Hall 1981) as a hypothesis of evolutionary relationships. We inferred phylogenetic relationships using 2 mitochondrial DNA (mtDNA) genes and a nuclear DNA (nDNA) gene; cytochrome *b* (*Cytb*), control region (CR), and exon 10 of the growth hormone receptor (GHR), respectively. Secondly, this study aimed to test the geographical distributions of subspecies when possible through thorough sampling efforts. Finally, divergence times were estimated for lineages within the genus *Aplodontia* to provide insight into the historical processes that have influenced evolutionary relationships and current geographical distribution of this taxon.

## MATERIALS AND METHODS

**Sampling.**—The majority of samples were obtained from National Wildlife Research Center research projects as contributions from United States federal agencies, state agencies, or academic institutions; and opportunistically from population-control efforts (Table 1). Samples came in various

**TABLE 1.**—Samples used in this study per subspecies of *Aplodontia rufa* (Hall 1981), number per collection locality (*n*), sample identification (ID), collection location by state and county (Co.) or Canadian province, collector identification (CI), number of samples sequenced per locus with CB = 1,050 bp cytochrome-*b* (*Cytb*) gene, CB1 = 450 bp *Cytb* gene, CR = control region, and GHR = exon 10 of the growth hormone receptor.

Taxa	<i>n</i>	Sample ID	Collection location	CI <sup>a</sup>	CB ( <i>n</i> )	CB1 ( <i>n</i> )	CR ( <i>n</i> )	GHR ( <i>n</i> )
<i>A. r. californica</i>	22	AR1–AR10, AR12, AR14, AR16–AR18, AR169–AR174, AR242,	Nevada, Washoe Co.	JJ	6	22	3	1
	2	AR11, AR13	Nevada, Carson City Co.		0	2	0	0
	1	AR15	Nevada, Douglas Co.		0	1	0	0
	4	AR162–AR165	California, Nevada Co.		0	4	0	0
	7	AR166–AR168, AR175–AR178	California, Placer Co.		2	7	2	0
<i>A. r. olympica</i>	215	AR19–AR76, AR82–AR161, AR194–AR241, AR252, AR256–AR268, AR316, AR336, AR341–AR344, AR346–AR354	Washington, Grays Harbor Co.	WA	21	214	15	16
	10	AR243–AR245, AR334–AR335, AR337–AR340, AR345	Washington, Pierce Co.		10	10	3	2
	6	AR246–AR251	Washington, Lewis Co.		6	6	5	2
	2	AR269, AR270	Washington, Wahkiakum Co.		2	2	0	0
	3	AR271–AR273	Washington, Snohomish Co.		3	3	0	0
	1	AR253	Washington, King Co.		0	1	0	0
	1	AR254	Washington, Kitsap Co.		1	1	0	0
	1	AR255	Washington, Thurston Co.		1	1	0	0
	9	AR355–AR363	Washington, Clallam Co.		9	9	0	0
	22	AR274–AR283, AR301, AR303, AR304, AR306, AR308–AR315	British Columbia, Canada, Yale Land District (Yale Division)	DR	10	10	18	1
	1	AR302	British Columbia, Canada, Yale Land District (Kamloops Division)		0	0	1	0
	19	AR284–AR300, AR305, AR307	British Columbia, Canada, New Westminster Land District		17	17	14	0
	1	AR396	Unknown		0	1	0	0
	9	AR318–AR325, AR397	California, Mendocino Co.	WZ, KP	0	8	8	1
	17	AR77, AR79, AR179–AR193	Oregon, Lincoln Co.	WA	2	17	2	2
<i>A. r. nigra</i>	1	AR80	Oregon, Polk Co.		1	1	1	1
	2	AR78, AR81	Oregon, Polk/Benton Co.		0	2	1	1
	3	AR393–AR395	Oregon, Clatsop Co.	GP	1	3	0	0
	6	AR364–AR367, AR332	California, Humboldt Co.	WA	3	4	4	4
		AR317		DC	1	1	1	0
<i>A. r. phaea</i>	7	AR326–AR331, AR333	California, Marin Co.	UBC	0	1	0	0
				DC	6	7	6	0
	1	AR368	California, Del Norte Co.	WA	1	1	1	1
<i>A. r. rufa</i>	3	AR369–AR371	Oregon, Clackamas Co.	WA	3	3	2	3
	7	AR372, AR373	Oregon, Lane Co.	JY	0	2	0	0
		AR381–AR385		JC	2	5	0	0
	11	AR374–AR380, AR386–AR388, AR391	Oregon, Curry Co.	RG	3	7	3	0
				JC	2	4	0	0
	1	AR392	Oregon, Coos Co.	JC	0	1	0	0
	2	AR389, AR390	Oregon, Douglas Co.		1	2	0	0

<sup>a</sup> JJ = Jenni Jeffers; WA = Wendy Arjo; DR = Doug Ransome; WZ = William Zielenski; KP = Kristine Pilgrim; GP = Garry Phelan; DC = Daniel Crocker; UBC = University of British Columbia; JY = Jeff Yost; JC = Jim Carr; RG = Robin Gonzalez.

forms: tissue, hair, and blood. We solicited samples from a variety of sources to achieve as much coverage as possible of geographical distribution of each designated subspecies. Trapping (in most cases) primarily occurred along slopes and draws in recently harvested timber units or in open or disturbed areas near old timber units where mountain beaver activity was detected (Ransome 2003; Arjo et al. 2007). Tissue samples

consisted of a small notch removed from the ear and stored in a buffer (20% dimethylsulfoxide, 0.25 M ethylenediamine-tetraacetic acid, saturated with NaCl, pH 8.0 solution—Seutin et al. 1991) or 100% ethanol, and blood was absorbed by filter paper. Blood samples were air dried and placed in coin envelopes; hair samples also were placed in coin envelopes after collection. Samples were sent to the National Wildlife



Research Center or the Genetic Data Centre at the University of British Columbia for molecular analysis. Animals trapped during the course of this study were captured and handled under a protocol approved by the Institutional Animal Care and Use Committee of the National Wildlife Research Center and in compliance with guidelines of the American Society of Mammalogists (Sikes et al. 2011).

*Extraction of DNA, amplification, and sequencing.*—Two methods were used for the isolation of DNA depending on the laboratory (National Wildlife Research Center or Genetic Data Centre). At the National Wildlife Research Center, whole genomic DNA (gDNA) was extracted from tissue using the DNeasy Blood & Tissue Kit (Qiagen, Valencia, California) following the manufacturer's protocol and from hair and blood samples with the QIAmp DNA Micro Kit (Qiagen) using a 30- $\mu$ l and a 75- $\mu$ l elution, respectively. At the Genetic Data Centre, gDNA was extracted from tissue following standard proteinase K–phenol–chloroform procedures (Sambrook et al. 1989).

Three sets of primers were used to amplify and sequence portions of 2 genes at the National Wildlife Research Center. The mtDNA *Cytb* gene was amplified with 2 sets of primers: MVZ 05/04 (Smith and Patton 1993—for the first 450 base pairs [bp] and including a transfer RNA [tRNA]) and self-designed *A. rufa* cytbII F/R (for the remaining portion of the *Cytb* gene; *A. rufa* cytbIIF 5' AACATGAAACATTGG CATTTC 3' and *A. rufa* cytbIIR 5' ATAGAGGCCAGTTGAC CAAT 3'). Aligning sequences from these 2 sets of primers resulted in *Cytb* gene sequences approximately 1,050 bp in length. Also, a portion of the nuclear DNA exon 10 of the GHR gene was amplified and sequenced using the GHR EXON10F/750R primers (Adkins et al. 2001). Details for reactions and thermal profiles are provided in Appendix I. Each reaction used polymerase chain reaction buffer C (Invitrogen, Carlsbad, California), *Go Taq* polymerase (Promega, Madison, Wisconsin), and deoxynucleoside triphosphates (Invitrogen). Cleanup of polymerase chain reaction product and cycle sequencing were performed following Piaggio and Perkins (2005). Cycle sequencing cleanup was accomplished with PrepEase (USB, Cleveland, Ohio) protocols and resulting sequences were visualized on an ABI3130xl genetic analyzer (Applied Biosystems, Foster City, California).

At the Genetic Data Centre, 2 primer sets targeting the mtDNA CR were designed using conserved flanking regions: *Cytb* as the source of a forward primer (CytbARF 5' GCCAGTTGAATACCCATTTATTGC 3') and 12SRNA and Phe tRNA as sources for the reverse primers (12SAR2R 5' GCATTTTCACTGGGGCGAGGAGT 3' and PheARR 5' GCTTTGCTTTATTTAAGCTAC 3') resulting in polymerase chain reaction products approximately 1,300 bp in size. Details for reactions and thermal profiles are provided in Appendix I. Each used polymerase chain reaction buffer for Paq5000 (Agilent Technologies Canada Inc., Toronto, Ontario, Canada), Paq5000 polymerase (Agilent Technologies Canada Inc.), and deoxynucleoside triphosphates (New England Biolabs, Ipswich, Massachusetts). Cycle sequencing was performed

following Franklin et al. (2011) using Sequitherm Excel II (Interscience, Markham, Ontario, Canada) and resulting sequences were visualized on a LiCor 4200 automatic sequencer (LiCor Biotechnology, Lincoln, Nebraska). A single CR sequence (AR 397) was generously donated by W. Zielenski and K. Pilgrim for this study (Table 1).

*Sequence analyses.*—All sequences were aligned and edited in Sequencher (ver. 4.8; Gene Codes Corp., Ann Arbor, Michigan). Polymorphisms within GHR were coded with IUPAC nucleotide ambiguity codes. Each marker data set was assessed with ALTER (Alignment Transformation Environment—Glez-Pena et al. 2010) to remove redundant haplotypes and compiled for downstream parsimony and likelihood analyses. Haplotype tables were compiled using DnaDiffer (Ritland 2012); haplotype tables can be accessed at Dryad Digital Repository (2012). Model selection was accomplished using MODELTEST version 3.6 (Posada and Crandall 1998) with Akaike information criterion (Akaike 1974). Total number of characters and parsimony-informative sites were calculated per data set using PAUP\*4.0b10 (Swofford 2002). Insertions and deletions within sequence data sets were determined using DnaSP (Librado and Rozas 2009).

*Phylogenetic analyses and divergence estimates.*—Phylogenetic relationships were estimated using maximum parsimony and maximum likelihood in PAUP\*4.0b10 (Swofford 2002) and Bayesian methods in BEAST version 1.6.1 (Drummond and Rambaut 2007). Members of the Sciuridae were chosen as outgroup taxa for *Cytb* and GHR analyses (Appendix II; Wettstein et al. 1995; Kruckenhauser et al. 1999; Adkins et al. 2001; Piaggio and Spicer 2001; Harrison et al. 2003; Álvarez-Castañeda 2007; Huchon et al. 2007; Oshida et al. 2009; Kerhoulas and Arbogast 2010) because these have been determined to be sister taxa to *Aplodontia* (Huchon et al. 1999; Adkins et al. 2001; Herron et al. 2004). Because the squirrel CR sequences were too divergent and alignment with outgroup taxa was difficult, we performed the CR phylogenetic analysis with both an outgroup of samples of *A. r. pacifica* (see results of *Cytb* analysis) and also midpoint rooting. Initially, sequences from each marker (CR, *Cytb*, and GHR) were analyzed separately then we concatenated mtDNA data for a total mtDNA analysis. We performed the partition-homogeneity test in PAUP\*4.0b10 (Swofford 2002) to test the validity of concatenating CR and *Cytb* sequences. This test was accomplished with 50 repetitions of a heuristic search, 100 tree-bisection-reconnection branch-swapping addition sequences each, and a reconnection limit of 8 and 10,000,000 rearrangements per repetition. For each data set, maximum-parsimony analyses consisted of heuristic searches with branch swapping by stepwise addition, 100 repetitions of random addition sequences, and tree-bisection-reconnection branch swapping with a reconnection limit of 8 and 10,000,000 rearrangements per replicate. All characters were unordered and had equal weights. Maximum-likelihood analyses were performed with estimates from the chosen evolutionary model through the initial generation of a neighbor-joining tree with

tree-bisection-reconnection branch swapping as in the maximum-parsimony analysis. Nodal support was estimated using the nonparametric bootstrap (Felsenstein 1985) under maximum likelihood with 100 replicates and tree-bisection-reconnection branch swapping. Nucleotide diversity (Nei 1987: equation 10.5) within lineages and nucleotide divergences (Nei 1987: equation 10.20) between lineages were calculated in DnaSP (Librado and Rozas 2009). This was accomplished using primarily *Cytb* sequences but in some cases where unique *Cytb* haplotypes were not obtained (i.e., coastal California lineages) they had to be calculated from CR sequences.

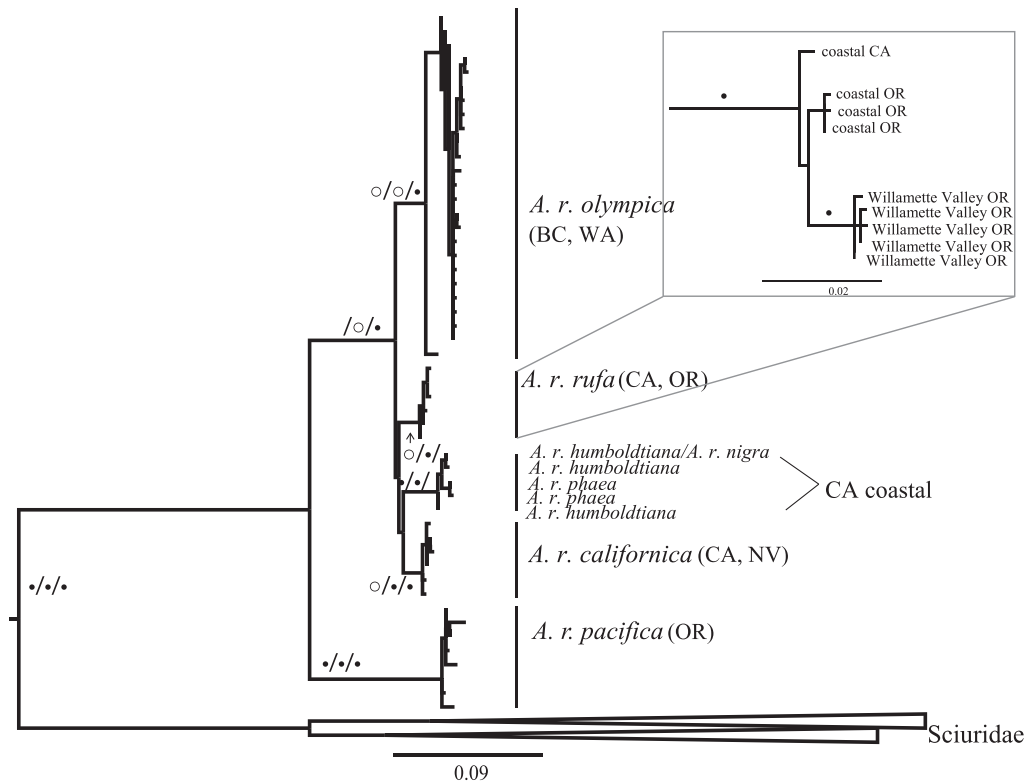
The program BEAST version 1.6.1 (Drummond and Rambaut 2007) was used for Bayesian lineage divergence estimation using the most complete mtDNA data set (450 bp *Cytb*) and nDNA (GHR) analyzed separately. Initially a molecular clock was tested; when the molecular clock was rejected then divergence estimates were conducted under a relaxed clock uncorrelated lognormal (Drummond et al. 2006), and the appropriate evolutionary model. A coalescent exponential growth parameter was applied because most of the analyses involved within species relationships. We used fossil dates of 34–38 million years ago (mya—Vianey-Liaud 1985) for the *Aplodontia*-sciurid time to most recent common ancestor ( $t_{\text{mrca}}$ ) prior with a lognormal distribution. This closely matches the molecular estimated date for this divergence from mtDNA (Montgelard et al. 2002). This date served as an informative prior for the root of the tree. Only a few fossils of modern *Aplodontia* have been found and they all date to the Pleistocene. We chose one of these in an effort to balance out the much older prior placed at the root of the tree and hopefully achieve more robust posterior probabilities for estimates of divergences within this genus (Ho and Phillips 2009). Therefore, a 2nd fossil prior of 8,000 years ago was applied for the  $t_{\text{mrca}}$  of the coastal California subspecies (Wake 2006) with an exponential distribution. Two other priors were set to a uniform distribution; one for the standard deviation of the uncorrelated lognormal relaxed clock (lower = 0, upper = 5) and the other for the mean of the branch rates (lower =  $1\text{E}-5$ , upper = 3). We have little information about the values of standard deviation or the mean of the branch rates but we know that the default ( $0-\infty$ ) is not appropriate. Therefore, a uniform prior (noninformative prior) distribution is intended to allow Bayesian inference for parameters about which not much is known beyond the data included in the analysis at hand. BEAST was run multiple times to determine the most appropriate chain length. Finally, 3 independent runs were accomplished with 200 million generations of the Markov chain Monte Carlo analysis with sampling at every 1,000 generations. Convergence, effective samples sizes, and divergence times with upper and lower 95% highest posterior density (HPD) bounds were assessed in Tracer, version 1.5 (Rambaut and Drummond 2007) with the 3 runs considered separately to confirm consistency among runs. When consistency was confirmed, trees from 1 *Cytb* run were resampled at a lower rate in LogCombiner (6,000 states) to reduce the number

of trees to be analyzed in TreeAnnotator. This was not necessary for GHR results. TreeAnnotator was used for both analyses with 10% of the samples removed for burn-in to generate a tree that was then visualized and edited for publication in FigTree, version 1.3.1 (Rambaut 2009).

## RESULTS

*Sequence and trees statistics.*—Initially 114 representative samples (including 2 outgroup samples) from different geographical localities were sequenced for the whole *Cytb* (1,050 bp) and phylogenetic analyses were conducted. We found that phylogenetic trees generated from sequences of 1,050 bp and the first 450 bp of *Cytb* had identical topologies for cladogenesis among subspecies (Fig. 2); however, 1,050 bp of *Cytb* provided some further phylogenetic resolution within 1 clade (see inset in Fig. 2). Because we were concerned primarily with resolution at the deeper branches for taxonomic designations we decided to sequence the rest of samples for only the first 450 bp. Therefore, 380 samples were sequenced for this fragment (Fig. 2; Table 1). These samples represented complete taxon sampling for most subspecies (except *A. r. californica*). Subsets of these samples were selected for GHR and CR sequencing after initial phylogenetic analyses of *Cytb* data. Representative samples were selected from each clade; however, subsets were not the same for each marker. Among the 89 samples sequenced for CR there were 17 that were not included in *Cytb* sequencing: 16 from British Columbia and 1 from California (Table 1). All sequences obtained for each DNA fragment were deposited in GenBank (accession numbers JX419435–JX 420115). Appropriate models of evolution for each data set were assessed and relevant parameters were calculated or estimated (Table 2). Parsimony-informative sites, number of characters, and insertions and deletions also were calculated for each data set (Table 2).

*Phylogenetic relationships.*—To generate phylogenetic trees, maximum parsimony and maximum likelihood were performed on *Cytb*, CR, and GHR data sets with all sequences and with nonredundant haplotypes, whereas Bayesian trees were inferred from *Cytb* and GHR with total sequence data (for access to data files, see Dryad Digital Repository [2012]). One concatenated data set with CR and *Cytb* nonredundant haplotypes (partition-homogeneity test,  $P = 0.75$ ) was used to generate maximum-parsimony and maximum-likelihood trees. MtDNA phylogenetic trees generated under all approaches inferred the same evolutionary relationships, hence maximum-likelihood trees with nonredundant haplotypes are presented with bootstrap support and posterior probabilities for ease of viewing (Figs. 2 and 3). The evolutionary relationships inferred among subspecies in the concatenated mtDNA tree were analogous to the CR tree. The CR tree is presented because this marker alone contributed resolution to relationships among the coastal California subspecies (Fig. 3). Likelihood analyses of CR with 2 different rooting schemes (midpoint and outgroup) were identical; midpoint rooted trees are presented. The



**FIG. 2.**—Maximum-likelihood phylogram inferred from nonredundant haplotypes from 380 samples sequenced for the first 450 bp of cytochrome *b* (*Cytb*). This tree is the same topology as a tree inferred from nonredundant haplotypes from 112 samples sequenced for 1,050 bp of *Cytb* with the exception of phylogeographic resolution within *Aplodontia rufa rufa* (see inset with bootstrap support). These 2 data sets have different samples representing the tips of the trees but infer the same clades and overall topology. Bootstrap support  $\geq 70$  is indicated with  $\circ$ , whereas support  $\geq 90$  is indicated with  $\bullet$ . The 1st symbol represents bootstrap support estimated from the first 450 bp of *Cytb* and the 2nd symbol is the bootstrap from the 1,050 bp of *Cytb*. The 3rd symbol represents the posterior probability from the Bayesian analysis  $\geq 0.95$ . Outgroup taxa relationships are collapsed in this figure for ease of presentation. State(s) where samples were collected are designated in parentheses.

maximum-parsimony and maximum-likelihood GHR trees exhibited poor bootstrap support outside of separating the squirrels from *Aplodontia*. However, the Bayesian tree had greater resolution with posterior probability support for lineages within *Aplodontia* and therefore is presented (Fig. 4).

Five distinctive and well-supported clades within *Aplodontia* were formed from analysis of *Cytb* sequences (Fig. 2) under maximum-parsimony and maximum-likelihood analyses. A single clade, made up of samples identified when collected as *A. r. pacifica*, was quite divergent from the remaining lineages and its basal position was statistically well supported ( $>95\%$ ). This relationship was supported in the CR (maximum likelihood), GHR (Bayesian), and total mtDNA trees (Figs. 3 and 4). This suggested this lineage was distinct and unique from the rest of *Aplodontia*.

The relationships among the remaining lineages were not well supported in any analysis; however, the monophyly of each subspecies had high statistical support (Figs. 2–4). One exception is that there was support for relationships among the coastal California subspecies in the CR tree (Fig. 3); with *A. r. humboldtiana* and *A. r. nigra* as sister subspecies and *A. r. phaea* sister to those 2 clades. Within both mtDNA trees all samples of *A. r. californica* grouped into 1 lineage. However,

this was not tested in the nDNA tree because we had only 1 sample of *A. r. californica* in that analysis. Samples from within the designated range of *A. r. rufa* fell into 2 separate lineages and this is statistically well supported in both mtDNA and nDNA analyses. One clade had samples from Washington and British Columbia and another had samples from areas of Oregon and northern California. No distinct phylogenetic difference was identified between purported *A. r. rufa* and *A. r. rainieri* throughout Washington and British Columbia. In fact, there appeared to be a single clade in this region (Figs. 2–4). The southern limit of the Washington and British Columbia clade and the northern limit of the Oregon and northern California clade is the Columbia River. In the *Cytb* tree, the 3 coastal California subspecies belonged to a single clade without support as unique lineages (Fig. 2). In fact, samples of *A. r. nigra* had a single *Cytb* and GHR haplotype (see haplotype data at Dryad Digital Repository [2012]) that was identical to a haplotype of *A. r. humboldtiana* (Figs. 2 and 4). However, in the CR phylogeny each subspecies had a unique haplotype(s) and the 3 subspecies formed monophyletic groups (Fig. 3). Therefore, each recognized coastal California subspecies occupied its own clade in the CR phylogeny.

**TABLE 2.**—Statistics and model parameters for sequence data.  $n$  = number of samples sequenced without outgroup taxa;  $n_{nrh}$  = number of nonredundant haplotypes; bp = base pairs; pi = parsimony-informative sites without outgroup taxa; indels = insertions–deletions; ML = maximum likelihood; MP = maximum parsimony; CI/RI = confidence index/retention index; inv. sites = number of invariable sites;  $\alpha$  = gamma shape parameter.

	<i>Cytb</i>	<i>Cytb1</i>	CR	GHR	CR + <i>Cytb1</i>
$n$	112	380	89	35	73
$n_{nrh}$	66	50	56	14	49
bp	1,053	450	1,010	753	1,460
pi	203	72	127	3	191
Indels	0	0	33	3	37
Model (ML)	TrN + I	GTR + I + G	GTR + I + G	TVM	GTR + I + G
Tree length (MP)	126	322	267	88	365
No. trees (MP)	72,314 <sup>a</sup>	5,436 <sup>a</sup>	3,780	60	1,512,486
CI/RI	0.76/0.92	0.76/0.95	0.71/0.89	0.99/0.83	0.67/0.91
A freq	0.32	0.32	0.30	0.31	0.29
C freq	0.14	0.30	0.26	0.25	0.26
G freq	0.28	0.11	0.12	0.21	0.13
T freq	0.27	0.27	0.32	0.23	0.32
A-C	1.00	2.23	1.61	12.60	1.52
A-G	16.69	14.92	13.74	30.50	16.34
A-T	1.00	4.88	2.56	7.17	2.57
C-G	1.00	1.03	0.02	9.56	0.57
C-T	22.70	33.60	20.51	30.50	23.34
G-T	1.00	1.00	1.00	1.00	1.00
Inv. sites	0.64	0.51	0.56	—	0.49
$\alpha$	—	1.22	0.38	—	0.36
–ln likelihood	3,186.92	3,544.44	2,856.77	1,394.35	4,025.27

<sup>a</sup> Tree rearrangements limited by a reconnection limit of 8 and time per rearrangement of 360 s to limit the number of rearrangements generated by closely related tip taxa.

Uncorrected pairwise sequence divergences estimated from the *Cytb* sequences within *Aplodontia* clades range from 0.004 to 0.01. The average sequence divergence between *A. r. pacifica* and the clade containing other *Aplodontia* subspecies was 0.13. Sequence divergences between the coastal California subspecies were calculated from the CR data because this was the only data set where each subspecies had unique haplotypes. Average divergences within these clades estimated from CR sequences ranged from 0.003 to 0.03. Divergences between the coastal California lineages ranged from 0.01 to 0.02. Between these clades and other *Aplodontia* clades, CR sequence divergences ranged from 0.03 to 0.04 with the exception of *A. r. pacifica*, where the divergences averaged 0.06, as they did between *A. r. pacifica* and all other *Aplodontia* clades.

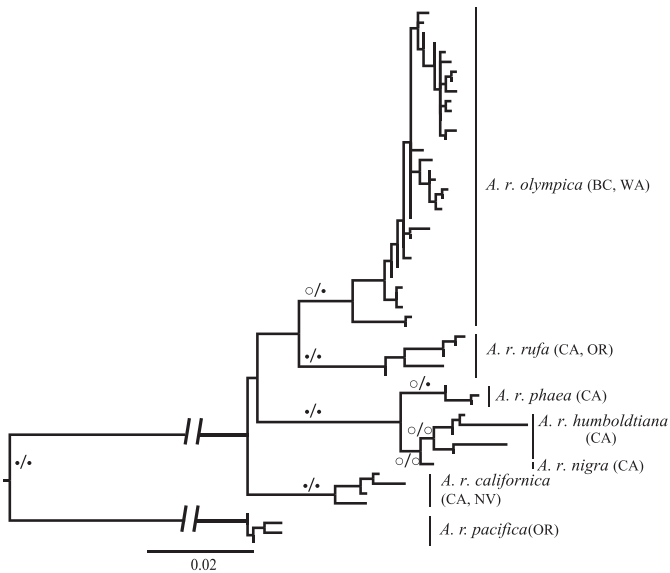
**Divergence time estimation.**—A strict molecular clock was rejected for the *Cytb* and GHR data sets (complete .xml files at Dryad Digital Repository [2012]) because the coefficient of variation estimation by BEAST was not close to zero. Therefore, the resulting divergence time estimate obtained from each data set was accomplished with the application of a relaxed clock. Posterior probabilities of divergences were not in agreement between *Cytb* and GHR (Table 3); nonetheless, the 95% HPDs for both markers were broadly overlapping. In fact, results from each marker indicated that the genus *Aplodontia* diverged about 1–2 mya. Further, divergence date estimates within *Aplodontia* occurred within the last million years. *A. r. pacifica* split from a common ancestor shared with other *Aplodontia* around 960,000 years ago (*Cytb*; Table 3). Among other clades, *A. r. olympica* (see “Discussion”) exhibited the earliest within-subspecies divergence and the

most recent divergences were within the coastal California subspecies. There was significant among-lineage nucleotide substitution rate heterogeneity in both genes, as measured by coefficient of variation (*Cytb* = 2.26, 95% HPD: [1.00, 3.91]; GHR = 3.04, 95% HPD: [0.30, 5.61]). Posterior exponential growth was slightly negative for both genes (*Cytb* = –0.26, 95% HPD: [–0.40, –0.13]; GHR = –0.15, 95% HPD: [–0.28, –0.03]), suggesting a reduced effective population size.

## DISCUSSION

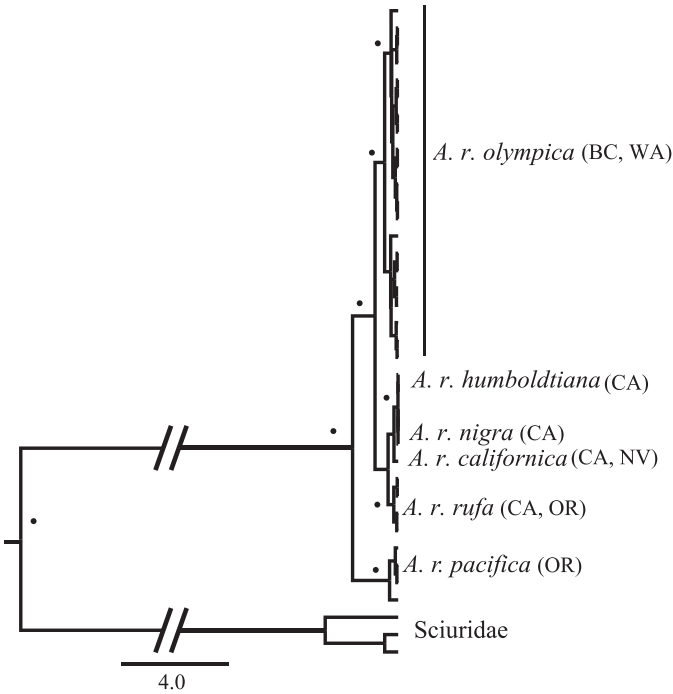
**Phylogeny and taxonomy of *Aplodontia*.**—The inferred mtDNA and nDNA phylogenetic trees of *Aplodontia* closely reflect the subspecific designations that Hall (1981) described, with a few exceptions (Fig. 5). The subspecies designated as *A. r. pacifica* by Hall (1981) occupies its own well-supported clade (>95%), sister to all other lineages of *A. rufa* in both mtDNA and nDNA trees (Figs. 2–4). Notably, our samples included individuals from near the type locality of *A. r. pacifica* at Newport, Oregon (Merriam 1899). Sequence divergence of *Cytb* data between *A. r. pacifica* and the other subspecies range from 11.7% to 13.4%. Considering that the average *Cytb* divergence for mammalian species is 11% (Bradley and Baker 2001), these divergences suggest *A. r. pacifica* may be a separate species. In addition, when examining 450 bp of *Cytb* we identified 3 amino acid changes (42 bp Ala to Ile/S; 102 bp Met to Leu; and 110 bp Tyr to Ser) that are unique to the *A. r. pacifica* lineage relative to all other *Aplodontia* lineages (see haplotype data at Dryad Digital Repository [2012]). The morphology of *A. r. pacifica* is distinct from that of other





**FIG. 3.**—Maximum-likelihood phylogram inferred from nonredundant haplotypes from 89 samples sequenced for the control region (CR). Bootstrap support  $\geq 66$  is indicated with  $\circ$ , whereas support  $\geq 90$  is indicated with  $\bullet$ . The 1st symbol is the bootstrap from maximum-likelihood analysis of the CR sequences and the 2nd symbol is from maximum-likelihood analysis of concatenated CR and cytochrome-*b* nonredundant haplotypes, which produced an identical topology. Revised subspecies designations are labeled on the tree. State(s) where samples were collected are designated in parentheses. We inferred the same topology with or without outgroup taxa so outgroup taxa were removed from this tree after analysis for ease of viewing and this tree is midpoint rooted.

subspecies of *A. rufa*: smaller body size, narrower defined rostrum, and larger, rounder ears (Merriam 1899). Karotypes of *A. r. pacifica*, *A. r. californica*, and *A. r. phaea* have been documented (Carrasco and Humphrey 1968; McMillin and Sutton 1972) and all have diploid chromosome numbers of 46. However, *A. r. pacifica* was described as having 5 pairs of metacentric and 17 pairs of submetacentric autosomes (Carrasco and Humphrey 1968), whereas the other 2 subspecies had 6 metacentric autosomes (McMillin and Sutton 1972). Further, the Y-chromosome of *A. r. pacifica* was described as metacentric, whereas the Y-chromosome of the other 2 subspecies was described as submetacentric (Carrasco and Humphrey 1968; McMillin and Sutton 1972). This difference alone is considered sufficient to warrant taxonomic distinction up to the subgeneric level (Nadler 1966a, 1966b) and is yet another piece of evidence that *A. r. pacifica* and *A. rufa* have had separate evolutionary histories for some time. Elevation of *A. r. pacifica* to species-level status would reinstate the classification of Merriam (1899), yet we acknowledge that such a revision requires a thorough morphological assessment. Specifically, further study is needed to verify that all of the unique morphological and karyotypic characteristics attributed to *A. pacifica* are consistent with our redefined geographic range for the subspecies. Likewise, a more detailed molecular assessment



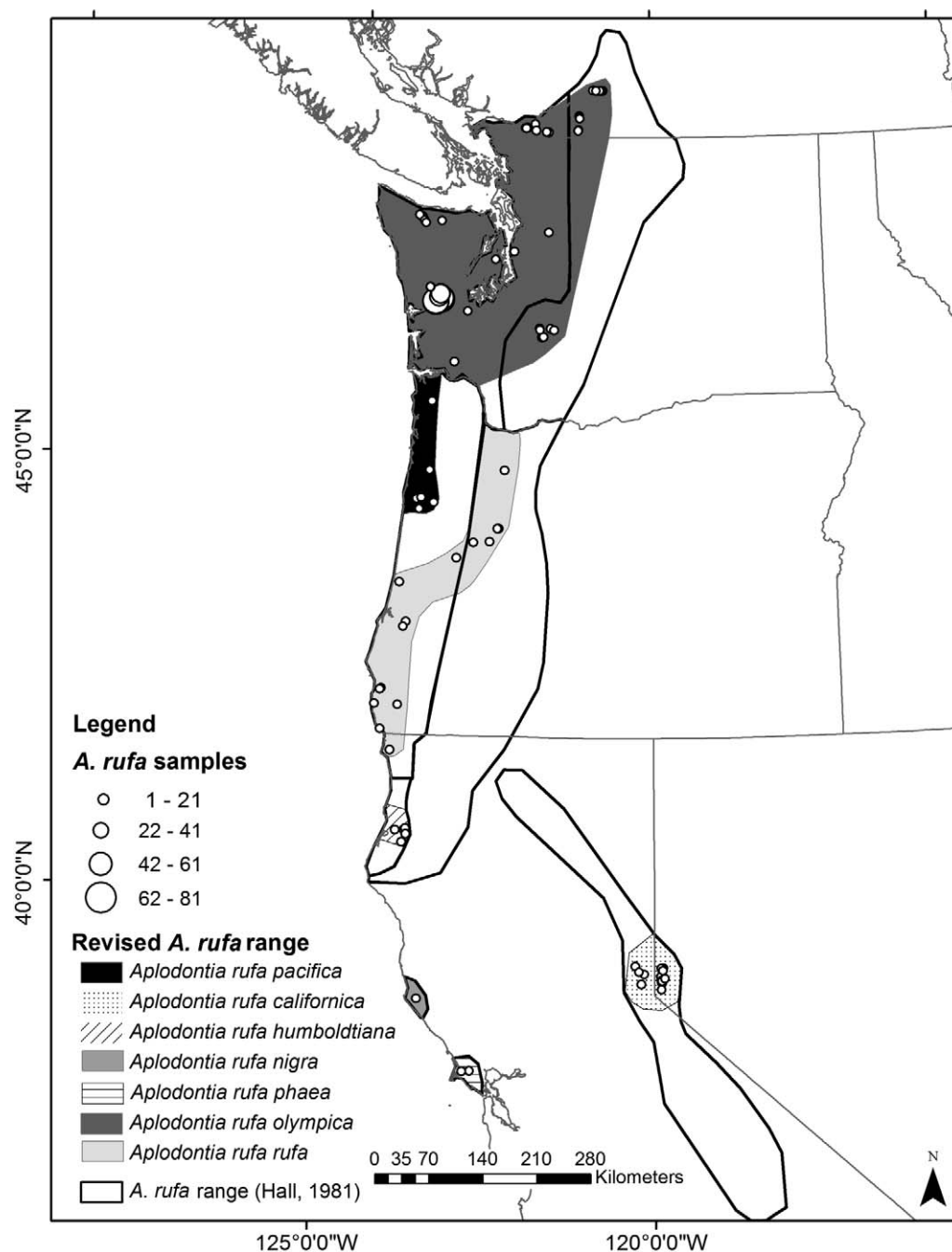
**FIG. 4.**—Nuclear DNA phylogeny inferred from Bayesian analysis of 35 growth hormone receptor exon 10 sequences. The symbol  $\bullet$  represents the posterior probability from the Bayesian analysis  $\geq 0.95$ . Revised subspecies designations are labeled on the tree. State(s) where samples were collected are designated in parentheses. The branches to the outgroup have been cut to reduce the overall size of the tree.

of samples from between the southern limit of our sampling of *A. r. pacifica* and the northern limit of our samples of *A. r. rufa* is needed to confirm distinction and a lack of a hybrid zone. Therefore, we retain the subspecific status of *A. r. pacifica*.

Individuals collected within the range of *A. r. rufa* (Hall 1981) were found in 2 well-supported clades in both mtDNA and nDNA trees. One clade had a geographical range in Oregon and northern California (Figs. 2–5). The other clade contained individuals from within the ranges of both *A. r. rufa* and *A. r. rainieri* (Hall 1981) north of the Columbia River (Figs. 1–5). The finding that *A. r. rainieri* and *A. r. rufa* fell into a single clade with individuals from Washington and British Columbia is not surprising because many researchers have noted that these subspecies are difficult to distinguish using morphological characters (Dalquest and Scheffer 1945;

**TABLE 3.**—Bayesian posterior age estimates for *Aplodontia* using 2 different genes. TMRCA = time to most recent common ancestor; ka = thousand years ago; *Cytb* = cytochrome *b*; HPD = highest posterior density; GHR = exon 10 of the growth hormone receptor.

TMRCA	<i>Cytb</i> (95% HPD) ka	GHR (95% HPD) ka
<i>Aplodontia</i>	960 (230, 2,190)	1,700 (120, 4,830)
<i>A. rufa</i>	450 (150, 840)	860 (85.4, 2,220)
<i>A. r. olympica</i>	230 (62.2, 430)	500 (56.4, 1,270)
<i>A. r. pacifica</i>	110 (16.7, 250)	320 (3.96, 1,020)
<i>A. r. californica</i>	80.3 (13, 180)	—
<i>A. r. rufa</i>	58.1 (6.87, 130)	160 (2.76, 490)



**FIG. 5.**—Map adapted from Hall's (1981:map 233) distribution of *Aplodontia rufa* and revised based on the results of this study. Shaded areas indicate geographical areas within the range defined by Hall (1981) where we sampled and are confident that subspecies exist. Nonshaded areas remain as areas to be confirmed as a portion of the range and taxonomic association.

Ransome 2003). We targeted samples from the type locality of *A. r. rainieri* (Merriam 1899), yet we found no apparent genetic distinction of samples from this site or its proximity. The Washington and British Columbia clade can be identified as *A. r. olympica* based on Merriam's (1899) designation of samples from this region and Taylor's (1918) revision of the genus. The type locality for *Aplodontia olympica* was from "Queniult Lake, Olympic Mts., Washington" (Merriam 1899:20), which Taylor (1918) spelled "Quiniault" and

Carraway and Verts (1993) found to be in Grays Harbor County, Washington. A great number of our samples in this clade were trapped from various localities in this county. We also suggest synonymizing *A. r. rainieri* Merriam, 1899, into *A. r. olympica* Merriam, 1899 (Fig. 5). The result would be that any *A. rufa* north of the Columbia River would be identified as a single subspecies, *A. r. olympica*, including individuals from British Columbia, Canada, where there are currently 2 separate conservation plans for the 2 presumptive subspecies (Ransome

2003). The clade from Oregon and northern California should retain the name *A. r. rufa* (Fig. 5) because the type locality for *A. r. rufa* is on the southern side of the Columbia River in Oregon (Richardson 1829b; Merriam 1899). Furthermore, a greater effort should be put into sampling *A. r. rufa* throughout its distribution; our sampling identified an apparent divergence between Willamette Valley and coastal Oregon individuals in the *Cytb* analysis (see inset in Fig. 2).

The current designation of California subspecies, *A. r. nigra*, *A. r. humboldtiana*, and *A. r. phaea*, as distinct subspecies is concordant with only the CR phylogenetic results. The distinction of *A. r. nigra* and *A. r. humboldtiana* was not supported by *Cytb* (nor GHR) analyses but *A. r. phaea* was well supported (Fig. 2). However, there are clear clades that are statistically well supported corresponding to each of these subspecies in the CR phylogeny (Fig. 3). This is likely because CR evolves more rapidly than *Cytb* and GHR and therefore can detect more-recent divergences (Randi 2000). Further, although the GHR Bayesian tree did provide support for some other clades within *Aplodontia* there were only 3 parsimony-informative sites in this data set. Also within California, our results support *A. r. californica* as a valid subspecies; however, our sampling was only in a very limited portion of their distribution (Fig. 1), as described by Hall (1981). Further study is required to test the geographic distribution of this subspecies.

*Geographical distributions and implications for management and conservation.*—A map showing an approximation of revised geographic boundaries within the genus *Aplodontia* is presented (Fig. 5). This map was compiled with data from extensive sampling within the ranges of most subspecies. However, in some cases our sampling did not cover the entire range of a subspecies (e.g., *A. r. californica*) and therefore we can only be sure this lineage is represented in the shaded area (= sampling area), but this does not mean it is not found in other areas of its distribution as designated by Hall (1981); hence, we have left Hall's boundaries. In the future, addition of samples from these areas may expand this range map.

Our phylogeographic assessment has reduced the geographic distribution of *A. r. rufa* as compared to that of Hall (1981; Fig. 5); however, this should not affect the management of this subspecies because they are still widely distributed. A similar situation is found for *A. r. pacifica*. Through targeted sampling along the Oregon coast we found that the range of *A. r. pacifica* did not extend as far south as previously described (Hall 1981; Figs. 1 and 5); some samples from Oregon that fell into the *A. r. rufa* clade were from areas thought to be part of the range of *A. r. pacifica*. Again this should not change the management practices given they are still common throughout the revised range.

The combination of *A. r. rainieri* and northern *A. r. rufa* into *A. r. olympica* in Washington and British Columbia may have an impact on how mountain beavers are managed in British Columbia, Canada. Previously considered "vulnerable" and "critically imperiled, or imperiled" as separate subspecies, respectively (British Columbia Conservation Data Centre

2012; Gyug 2000), the status of *A. rufa* may be reduced to "vulnerable" or removed from the species of concern list once recognized as a single subspecies, thereby increasing its numbers and range. Because mountain beavers, even as 2 separate subspecies, were not previously protected in Washington, the management of *A. r. olympica* would be status quo in that state.

Unfortunately, our sampling of the range of *A. r. californica* is insufficient to address the limits of its distribution. The endangered species status for the subspecies *A. r. nigra* and species of special concern for *A. r. phaea* will not be altered by our findings because our results support the distinction of these lineages along with *A. r. humboldtiana* at the subspecific level. Notably, we found low diversity among samples of *A. r. nigra* with only 1 *Cytb* haplotype and 2 CR haplotypes (see haplotype data at Dryad Digital Repository [2012]). It is also noteworthy that divergences within the *A. r. humboldtiana* clade are at least as large as those between *A. r. humboldtiana*, *A. r. nigra*, and *A. r. phaea* together. Further, haplotype diversity of *A. r. humboldtiana* is relatively high, suggesting possible cryptic diversity, thus warranting further investigation. We sampled *A. r. nigra* and *A. r. phaea* from their type localities but not *A. r. humboldtiana* (Merriam 1899; Taylor 1914, 1916a). Clearly, continuing research and conservation efforts for the isolated, disjunct coastal California populations are critical for the maintenance of these unique lineages.

An examination of the geographic distributions of subspecies that we documented (Fig. 5) will undoubtedly raise questions about what possible geographic barriers explain the proximate distributions of *A. r. olympica*, *A. r. rufa*, *A. r. humboldtiana*, and *A. r. pacifica*. Pleistocene influences may explain some of the current geographical boundaries, yet there may be other influences. The current distribution of *Aplodontia* correlates to the distribution of the temperate broadleaf and mixed forests ecoregion in the Pacific Northwest region of the United States as defined by Ricketts et al. (1999). This explains the southern limitations of the distribution but not the northern range in British Columbia, where the ecoregion is much more broadly distributed than is *Aplodontia*. The northern limit of the genus and the remaining barriers among continuously distributed *Aplodontia* may be explained to some degree by the presence of large rivers. However, specifics of river size that limit mountain beavers need to be further defined. Gyug (2000) conducted extensive field surveys and investigations of historical records to determine the limits of *A. rufa* in British Columbia. Gyug (2000) determined that the Fraser River limited northward dispersal even with suitable habitat on the northern side of this river; this distribution limit was confirmed by a later study (Ransome 2003). The Columbia River also clearly delimits *A. r. rufa* and *A. r. olympica*. Finley (1941) first recognized the Columbia River as a barrier for *Aplodontia* but he believed it was an effective barrier only in its lower reaches and that further upriver it was less effective. Steele (1989:15) stated that *A. r. humboldtiana* is "geographically isolated on three sides by the Smith River to the north, the coastline to the west, and a distance of approximately 160 km of unoccupied

territory to the south.” We collected an *A. rufa* from the Jedediah Smith State Park in Del Norte County, California, which is on the other side of the Smith River (northwest) from the distribution of *A. r. humboldtiana* and our sample from this park is clearly an *A. r. rufa* (Table 1), confirming that the Smith River is a probable barrier. Without an obvious explanation for the phylogeographical split between *A. r. pacifica* and *A. r. rufa*, one must wonder if the Siuslaw River and its tributaries, the Alsea River, or the Yaquina River may serve as a boundary for *A. r. pacifica*. This could be investigated through the identification of the southernmost population of *A. r. pacifica*. Nonetheless, we conclude that rivers can be barriers to dispersal of *Aplodontia* because they delimit some current geographical boundaries among lineages within this genus.

*Dates of divergences.*—Although powerful analytical tools have been developed recently for divergence date estimation and phylogenetic assessment (Drummond et al. 2006), there are still limitations to the inferences that can be made from some data sets. In our case, the estimates from mtDNA and nDNA are broadly overlapping, with mtDNA providing more resolution than nDNA; we regard these estimates as providing a general timeline for the divergences of *Aplodontia*. Therefore, we conclude from both lines of evidence that modern *Aplodontia* arose <5 mya (probably 1–2 mya) and the divergences within this genus occurred during the Pleistocene. The divergence estimate of 1–2 mya for modern *Aplodontia* closely matches the estimate for this divergence obtained from phylogenetic analysis of fossil data (Hopkins 2008).

There is a large gap in fossil data for aplodontiids from 6 mya to about 70,000 years ago (Shotwell 1958; Hopkins 2007). Interestingly, the fossils that date to about 70,000 years ago (Kurtén and Anderson 1980) are all from 3 northern California caves and this time period approximates our estimated divergences (*Cytb*) of *A. r. rufa* and *A. r. californica* (Table 3), both of which currently occur in California. Shafer et al. (2010) suggest the occurrence of multiple refugia in the Pacific Northwest during the Pleistocene climatic oscillations. The southern boundary of the ice sheets occurred in this region and it is clear that the climatic oscillations of this time period shaped the evolutionary relationships of the region's biota (Shafer et al. 2010), including *Aplodontia*, and our estimates of divergence times within this genus confirm this impact. Our results also suggest a reduction in overall demography through time, which could be due to anthropogenic or climatic alteration, or both, of habitat of *Aplodontia*, as reflected by the endangered and threatened California subspecies. This issue requires further investigation before final conclusions are reached.

The genus *Aplodontia* of the family Aplodontiidae was understood to be a monotypic genus with the species *A. rufa*. One objective of this study was to use a molecular phylogenetic approach to test the morphological taxonomy (Hall 1981) as a hypothesis of evolutionary relationships. Using this approach, this study has identified 2 possible species-level divergences within this genus, which may require the resurrection of a historically recognized species, pending

further investigation. Also, by incorporating geographical information the current location and distribution of subspecies of *A. rufa* were elucidated. As a result, this study identified a single subspecies (*A. r. olympica*) in Washington and British Columbia, Canada, where previously 2 subspecies were designated. Further, distributions of subspecies in Oregon were revised and taxonomic designations and geographical distributions of coastal California subspecies of *A. rufa* were confirmed. Other than possible management changes for *A. r. olympica*, the conservation status for all other subspecies of *Aplodontia* should remain as status quo. Finally, our estimated divergence dates within *Aplodontia* demonstrate Pleistocene influences and thus provide a better understanding of evolution within this group.

### *Aplodontia* Richardson, 1829b

*Aplodontia* Richardson, 1829b:334. Type species *Aplodontia leporina* Richardson, 1829b:335 (= *Anisonyx rufa* Rafinesque, 1817:45).

*Geographic range.*—Patchily distributed in cool, moist habitats from southern British Columbia south into areas of coastal and montane central California and a small region of western Nevada.

### *Aplodontia rufa* Rafinesque, 1817

*Anisonyx? rufa* Rafinesque, 1817:45. Type locality “Neighbourhood of the Columbia River.”

*Aplodontia rufa*: Merriam, 1886:316. First use of current name combination.

*Geographic range.*—Patchily distributed in cool, moist habitats from southern British Columbia south into areas of coastal and montane central California and a small region of western Nevada.

### *Aplodontia rufa californica* Peters, 1864

*H[aplodon]. leporinus* var. *Californicus* Peters, 1864:179. Type locality Sierra Nevada of California (Merriam 1886; Taylor 1918).

*Aplodontia major* Merriam, 1886:316. Type locality “Sierra Nevada Mountains, in Placer County, Cal.”

[*Aplodontia rufa*] *californica*: Trouessart, 1904:348. First use of current name combination.

*Geographic range.*—Patchily distributed in cool, moist habitats in the Sierra Nevadas of central California and a small region of western Nevada.

### *Aplodontia rufa humboldtiana* Taylor, 1916a

*Aplodontia humboldtiana* Taylor, 1916a:21. Type locality “Carlotta, Humboldt County, California.”

*Aplodontia rufa humboldtiana*: Taylor, 1918:470. First use of current name combination.



*Geographic range*.—Patchily distributed in cool, moist habitats in coastal Humboldt County, California.

*Aplodontia rufa pacifica* Merriam, 1899

*Aplodontia pacifica* Merriam, 1899:19. Type locality “from Newport, mouth of Yaquina Bay, Oregon.”

*Aplodontia rufa pacifica*: Taylor, 1918:480. First use of current name combination.

*Geographic range*.—Patchily distributed in cool, moist habitats in northwestern Oregon from the Columbia River south to near central coastal Oregon.

*Aplodontia rufa rufa* Rafinesque, 1817

*Anisonyx? rufa* Rafinesque, 1817:45. Type locality “Neighbourhood of the Columbia River.”

*Aplodontia leporina* Richardson, 1829b:335. No type locality, but near Columbia River implied.

*Aplodontia chryseola* Kellogg, 1914:295. Type locality “Jackson Lake, Siskiyou County, California altitude 5900 feet.”

*Aplodontia rufa grisea* Taylor, 1916b:497. Type locality “Renton [near Seattle], Washington.”

*Geographic range*.—Patchily distributed in cool, moist habitats in Oregon from just south of the Columbia River into areas of coastal southern Oregon and northern California.

*Aplodontia rufa nigra* Taylor, 1914

*Aplodontia nigra* Taylor, 1914:297. Type locality “Point Arena, Mendocino County, California.”

*Aplodontia rufa nigra*: Taylor, 1918:479. First use of current name combination.

*Geographic range*.—Patchily distributed in cool, moist habitats in Mendocino County, California.

*Aplodontia rufa olympica* Merriam, 1899

*Aplodontia olympica* Merriam, 1899:20. Type locality “Queenilt Lake, Olympic Mts., Washington.”

*Aplodontia major rainieri* Merriam, 1899:21. Type locality “Paradise Creek, south side Mt. Rainier, Washington (alt., 5200 ft.).”

*Aplodontia californica columbiana* Taylor, 1916b:499. Type locality “Roab’s Ranch, Hope, British Columbia.”

*Aplodontia rufa olympica*: Taylor, 1918:460. First use of current name combination.

*Geographic range*.—Patchily distributed in cool, moist habitats in Washington and southern British Columbia.

*Aplodontia rufa phaea* Merriam, 1899

*Aplodontia phaea* Merriam, 1899:20. Type locality “Pt. Reyes, Marin Co., California.”

*Aplodontia rufa phaea*: Taylor, 1918:480. First use of current name combination.

*Geographic range*.—Patchily distributed in cool, moist habitats in Point Reyes, Marin County, California.

## ACKNOWLEDGMENTS

We thank W. Zielinski, M. Schwartz, and K. Pilgrim of the United States Forest Service for their kindness, generosity, and collaboration. We also extend our gratitude to T. Best for helpful discussions on taxonomic designations. We also thank M. A. Neubaum and J. Figueroa; J. Jeffers of the Nevada Department of Wildlife; and D. Girman and D. Crocker from Sonoma State University for their assistance in this project, including, in some cases, donations of samples. We also acknowledge K. Hamm, B. Youst, D. Lancaster, F. Arnold, B. Covell, J. Carr, R. Best, E. Meister, J. Duvall, J. Yost, J. Schaberl, T. Kocket, T. Losli, P. Happe, G. Phelan, R. Gonzalez, M. Dykzeul, and E. Myers for their help in obtaining samples. Thanks to J. Fillon and K. Ritland for their invaluable assistances in haplotype submission and discernment, respectively. We appreciate the support of the sabbatical program of the United States Department of Agriculture, Wildlife Services, National Wildlife Research Center; the Washington Forest Protection Association; and Oregon Forest Industries Council. Finally, we acknowledge the helpful comments and guidance from an anonymous reviewer.

## LITERATURE CITED

- ADKINS, R. M., E. L. GELKE, D. ROWE, AND R. L. HONEYCUTT. 2001. Molecular phylogeny and divergence time estimates for major rodent groups: evidence from multiple genes. *Molecular Biology and Evolution* 18:777–791.
- AKAIKE, H. 1974. A new look at the statistical model identification. *IEEE Transactions on Automatic Control* 19:716–722.
- ÁLVAREZ-CASTAÑEDA, S. T. 2007. Systematics of the antelope ground squirrel (*Ammospermophilus*) from islands adjacent to the Baja California peninsula. *Journal of Mammalogy* 88:1160–1169.
- ARJO, W. M. 2010. Forest management practices and the effects on an endemic rodent species and subsequent seedling damage. *Western Journal of Applied Forestry* 3:127–135.
- ARJO, W. M., R. E. HUENEFELD, AND D. L. NOLTE. 2007. Mountain beaver home ranges, habitat use, and population dynamics in Washington. *Canadian Journal of Zoology* 85:328–337.
- BRADLEY, R. D., AND R. J. BAKER. 2001. A test of the Genetic Species Concept: cytochrome-*b* sequences and mammals. *Journal of Mammalogy* 82:960–973.
- British Columbia Conservation Data Centre. 2012. <http://www.env.gov.bc.ca/cdc/>. Accessed 11 March 2013.
- CAFFERATA, S. 1992. Silvicultural methods in relation to selected wildlife species. Pp. 231–251 in *Silvicultural approaches to animal damage management in Pacific Northwest forests* (H. C. Black, ed.). United States Department of Agriculture, Forest Service, Pacific Northwest Research Station, Technical Report PNW-GTR-287:1–439.
- CARRASCO, A. A., AND D. G. HUMPHREY. 1968. Chromosomes of the mountain beaver, *Aplodontia rufa pacifica*. *Mammalian Chromosome Newsletter* 9:238–239.
- CARRAWAY, L. N., AND B. J. VERTS. 1993. *Aplodontia rufa*. *Mammalian Species* 431:1–10.
- DALQUEST, W. W., AND V. B. SCHEFFER. 1945. The systematic status of the races of the mountain beaver (*Aplodontia rufa*) in Washington. *Murrelet* 26:34–37.

- DRUMMOND, A. J., S. Y. HO, M. J. PHILLIPS, AND A. RAMBAUT. 2006. Relaxed phylogenetics and dating with confidence. *PLoS Biology* 4:e88.
- DRUMMOND, A. J., AND A. RAMBAUT. 2007. BEAST: Bayesian evolutionary analysis by sampling trees. *BMC Evolutionary Biology* 7:214.
- DRYAD DIGITAL REPOSITORY. 2012. <http://dx.doi.org/10.5061/dryad.rc628>. Accessed 11 January 2013.
- FELSENSTEIN, J. 1985. Confidence limits on phylogenies: an approach using bootstrap. *Evolution* 39:783–791.
- FINLEY, R. B. 1941. Geographic variation in the rodent *Aplodontia rufa*. *Murrelet* 22:45–51.
- FRANKLIN, M. T., C. E. RITLAND, AND J. H. MYERS. 2011. Genetic analysis of cabbage loopers, *Trichoplusia ni* (Lepidoptera: Noctuidae), a seasonal migrant in western North America. *Evolutionary Applications* 4:89–99.
- GLEZ-PENA, D., D. GOMEZ-BLANCO, M. REBOIRO-JATO, F. FDEZ-RIVEROLA, AND D. POSADA. 2010. ALTER: program-oriented conversion of DNA and protein alignments. *Nucleic Acids Research* 38:W14–W18.
- GODIN, A. J. 1964. A review of the literature on the mountain beaver. Washington, United States Department of Interior, Fisheries and Wildlife Service, Washington, D.C., Special Scientific Report 78:1–52.
- GYUG, L. W. 2000. Status, distribution, and biology of the mountain beaver, *Aplodontia rufa*, in Canada. *Canadian Field Naturalist* 114:476–490.
- HACKER, A. L., AND B. E. COBLENTZ. 1993. Habitat selection by mountain beavers recolonizing Oregon coast range clearcuts. *Journal of Wildlife Management* 57:847–853.
- HALL, E. R. 1981. The mammals of North America. 2nd ed. John Wiley & Sons, Inc., New York 2:601–1181 + 90.
- HARRISON, R. G., S. M. BOGDANOWICZ, R. S. HOFFMANN, E. YENSEN, AND P. W. SHERMAN. 2003. Phylogeny and evolutionary history of the ground squirrels (Rodentia: Marmotinae). *Journal of Mammal Evolution* 10:249–276.
- HERRON, M. D., T. A. CASTOE, AND C. L. PARKINSON. 2004. Sciurid phylogeny and the paraphyly of Holarctic ground squirrels (*Spermophilus*). *Molecular Phylogenetics and Evolution* 31:1015–1030.
- HO, S. Y. W., AND M. J. PHILLIPS. 2009. Accounting for uncertainty in phylogenetic estimation of evolutionary divergence times. *Systematic Biology* 58:367–380.
- HOPKINS, S. S. B. 2007. Causes of lineage decline in the Aplodontidae: testing for the influence of physical and biological change. *Palaeogeography, Palaeoclimatology, Palaeoecology* 246:331–353.
- HOPKINS, S. S. B. 2008. Phylogeny and evolutionary history of the Aplodontioidea (Mammalia: Rodentia). *Zoological Journal of the Linnean Society* 153:769–838.
- HUCHON, D., F. M. CATZEFELIS, AND E. J. DOUZERY. 1999. Molecular evolution of the nuclear von Willebrand factor gene in mammals and the phylogeny of rodents. *Molecular Biology and Evolution* 16:577–589.
- HUCHON, D., ET AL. 2007. Multiple molecular evidences for a living mammalian fossil. *Proceedings of the National Academy of Sciences USA* 104:7495–7499.
- KELLOGG, L. 1914. *Aplodontia chryseola*, a new mountain beaver from the Trinity region of northern California. University of California Publications in Zoology 12:295–296.
- KERHOULAS, N. J., AND B. S. ARBOGAST. 2010. Molecular systematics and Pleistocene biogeography of Mesoamerican flying squirrels. *Journal of Mammalogy* 91:654–667.
- KOYABU, D. B., S. MALAIVIJITNOND, AND Y. HAMADA. 2008. Pelage color variation of *Macaca artoides* and its evolutionary implications. *International Journal of Primatology* 29:531–541.
- KRUCKENHAUSER, L., W. PINSKER, E. HARING, AND W. ARNOLD. 1999. Marmot phylogeny revisited: molecular evidence for a diphyletic origin of sociality. *Journal of Zoological Systematics and Evolutionary Research* 37:49–56.
- KURTÉN, B., AND E. ANDERSON. 1980. Pleistocene mammals of North America. Columbia University Press, New York.
- LIBRADO, P., AND J. ROZAS. 2009. DnaSP v5: a software for comprehensive analysis of DNA polymorphism data. *Bioinformatics* 25:1451–1452.
- LINDENMAYER, D. B., K. L. VIGGERS, R. B. CUNNINGHAM, AND C. F. DONNELLY. 1995. Morphological variation among populations of the mountain brushtail possum *Trichosurus caninus* Ogilby (Phalangeridae: Marsupialia). *Australian Journal of Zoology* 43:449–458.
- McMILLIN, J. H., AND D. A. SUTTON. 1972. Additional information on chromosomes of *Aplodontia rufa* (Sciuridae). *Southwestern Naturalist* 17:307–308.
- MERRIAM, C. H. 1886. Description of a new species of *Aplodontia* from California. *Annals of the New York Academy of Sciences* 3:312–328.
- MERRIAM, C. H. 1899. Descriptions of six new rodents of the genera *Aplodontia* and *Thomomys*. *Proceedings of the Biological Society of Washington* 13:19–21.
- MONTGELARD, C., S. BENTZ, C. TIRARD, O. VERNEAU, AND F. M. CATZEFELIS. 2002. Molecular systematics of Sciurognathi (Rodentia): the mitochondrial cytochrome *b* and 12S rRNA genes support the Anomaluroidae (Pedetidae and Anomaluridae). *Molecular Phylogenetics and Evolution* 22:220–233.
- NADLER C. F. 1966a. Chromosomes and sytematics of American ground squirrels of the subgenus *Spermophilus*. *Journal of Mammalogy* 47:579–596.
- NADLER, C. F. 1966b. Chromosomes of *Spermophilus franklini* and taxonomy of the ground squirrel genus *Spermophilus*. *Systematic Zoology* 15:199–206.
- NEI, M. 1987. Molecular evolutionary genetics. Columbia University Press, New York.
- OSHIDA, T., A. ARSLAN, AND M. NODA. 2009. Phylogenetic relationships among the Old World *Sciurus* squirrels. *Folia Zoologica* 58:14–25.
- PETERS, W. C. 1864. Neue Arten der Säugethieregattungen *Geomys*, *Haplodon*, und *Dasytus*. *Monatsberichte der Königlich Preussischen Akademie der Wissenschaften zu Berlin* 17:177–179 (not seen, cited in Merriam 1886 and Taylor 1918).
- PFEIFFER, E. W., W. C. NUNGESSER, D. A. IVERSON, AND J. F. WALLERIUS. 1960. The renal anatomy of the primitive rodent, *Aplodontia rufa*, and a consideration of its functional significance. *Anatomical Record* 137:227–236.
- PIAGGIO, A. J., AND S. L. PERKINS. 2005. Molecular phylogeny of North American long-eared bats (Vespertilionidae: *Corynorhinus*); inter- and intraspecific relationships inferred from mitochondrial and nuclear DNA sequences. *Molecular Phylogenetics and Evolution* 37:762–775.
- PIAGGIO, A. J., AND G. S. SPICER. 2001. Molecular phylogeny of the chipmunks inferred from mitochondrial cytochrome *b* and cytochrome oxidase II gene sequences. *Molecular Phylogenetics and Evolution* 20:335–350.
- POSADA, D., AND K. A. CRANDALL. 1998. MODELTEST: testing the model of DNA substitution. *Bioinformatics* 14:817–818.

- RAFINESQUE, C. S. 1817. Descriptions of seven new genera of North American quadrupeds. *American Monthly Magazine and Critical Review* 2:44–46.
- RAMBAUT, A. 2009. FigTree version 1.3.1. <http://tree.bio.ed.ac.uk/software/figtree/>. Accessed 9 November 2012.
- RAMBAUT, A., AND A. J. DRUMMOND. 2007. Tracer version 1.4. <http://beast.bio.ed.ac.uk/Tracer>. Accessed 9 November 2012.
- RANDI, E. 2000. Mitochondrial DNA. Pp. 136–167 in *Molecular methods in ecology* (A. J. Baker, ed.). Blackwell Science Ltd., Oxford, United Kingdom.
- RANSOME, D. B. 2003. Distribution, population dynamics, habitat associations, and the influence of forest management on mountain beavers. DBR Forestry–Wildlife Integrated Management Project R2003-0123 Annual Report, pp. 1–46.
- RENSBERGER, J. M. 1975. *Haplomys* and its bearing on the origin of the aplodontid rodents. *Journal of Mammalogy* 56:1–14.
- RICHARDSON, J. 1829a. Fauna boreali Americana. Part I. Murray, London, United Kingdom. Reprinted 1974, Arno Press Inc., New York.
- RICHARDSON, J. 1829b. On *Aplodontia*, a new genus of the order Rodentia, constituted from the reception of the sewellel, a burrowing animal which inhabits the northwestern coast of America. *Zoological Journal* 4:333–337.
- RICKETTS, T. H., ET AL. 1999. Terrestrial ecoregions of North America: a conservation assessment. Island Press, Washington, D.C.
- RITLAND, K. 2012. DNADiffer. <http://gdc.forestry.ubc.ca/downloads>. Accessed 11 January 2013.
- SAMBROOK, J., E. F. FRITSCH, AND T. MANIATIS. 1989. Molecular cloning: A laboratory manual. 2nd ed. Cold Spring Harbor Laboratory Press, Cold Spring Harbor, New York.
- SEUTIN, G., B. N. WHITE, AND P. T. BOAG. 1991. Preservation of avian blood and tissue samples for DNA analysis. *Canadian Journal of Zoology* 69:82–90.
- SHAFFER, B. A., C. I. CULLINGHAM, S. D. CÔTÉ, AND D. W. COLTMAN. 2010. Of glaciers and refugia: a decade of study sheds new light on the phylogeography of northwestern North America. *Molecular Ecology* 19:4589–4621.
- SHOTWELL, J. A. 1958. Evolution and biogeography of the aplodontid and mylagaulid rodents. *Evolution* 12:451–484.
- SIKES, R. S., W. L. GANNON, AND THE ANIMAL CARE AND USE COMMITTEE OF THE AMERICAN SOCIETY OF MAMMALOGISTS. 2011. Guidelines of the American Society of Mammalogists for the use of wild mammals in research. *Journal of Mammalogy* 92:235–253.
- SMITH, M. F., AND J. L. PATTON. 1993. The diversification of South American murid rodents: evidence from mitochondrial DNA sequence data for the akodontine tribe. *Biological Journal of the Linnean Society* 50:149–177.
- STEELE, D. T. 1989. An ecological survey of endemic mountain beavers (*Aplodontia rufa*) in California, 1979–1983. State of California, Department of Fish and Game, Wildlife Management Division Administrative Report 89-1:1–58.
- SWOFFORD, D. L. 2002. PAUP\*: phylogenetic analysis using parsimony (\*and other methods). Sinauer Associates, Inc., Publishers, Sunderland, Massachusetts.
- TAYLOR, W. P. 1914. A previously undescribed *Aplodontia* from the middle north coast of California. *University of California Publications in Zoology* 12:297–300.
- TAYLOR, W. P. 1916a. *Aplodontia humboldtiana*: a new mountain beaver from the Humboldt Bay district, California. *Proceedings of the Biological Society Washington* 29:21–24.
- TAYLOR, W. P. 1916b. Two new aplodontias from western North America. *University of California Publications in Zoology* 12:497–501.
- TAYLOR, W. P. 1918. Revision of the rodent genus *Aplodontia*. *University of California Publications in Zoology* 17:435–504.
- TROUESSART, E. L. 1904. Catalogus mammalium tam viventium quam fossilium. Quinquennial supplementum: Rodentia, Fasciculus. 2:289–546.
- UNITED STATES FISH AND WILDLIFE SERVICE. 1991. Endangered and threatened wildlife and plants; Point Arena mountain beaver (*Aplodontia rufa nigra*) determined to be endangered. *Federal Register* 56:64716–64723.
- VIANEV-LIAUD, M. 1985. Possible evolutionary relationships among Eocene and lower Oligocene rodents of Asia, Europe and North America. Pp. 277–309 in *Evolutionary relationships among rodents: a multidisciplinary analysis* (W. P. Luckett and J.-L. Hartenberger, eds.). Plenum Press, New York.
- WAKE, T. A. 2006. Archaeological sewellel (*Aplodontia rufa*) remains from Duncan's Point Cave, Sonoma County, California. *Journal of Mammalogy* 87:139–147.
- WETTSTEIN, P. J., ET AL. 1995. Phylogeny of six *Sciurus aberti* subspecies based on nucleotide sequences of cytochrome *b*. *Molecular Phylogenetics and Evolution* 4:150–162.
- WILLIAMS, D. F. 1986. Mammalian species of special concern in California. State of California, the Resources Agency, Department of Fish and Game, Sacramento.

Submitted 20 January 2012. Accepted 21 December 2012.

Associate Editor was Ryan W. Norris.

## APPENDIX I

Polymerase chain reaction chemistry and conditions for each primer set targeting 3 DNA regions. dNTP = deoxynucleoside triphosphate; °C/T<sub>ID</sub> = temperature in degrees Celsius/initial denaturation time in minutes; °C/T<sub>D</sub> = temperature in degrees Celsius/initial denaturation time in seconds; °C/T<sub>A</sub> = temperature in degrees Celsius/annealing time in seconds; °C/T<sub>E</sub> = temperature in degrees Celsius/extension time in minutes; °C/T<sub>FE</sub> = temperature in degrees Celsius/final extension time in minutes; *Cytb* = cytochrome *b*; GHR = exon 10 of the growth hormone receptor; CR = control region.

Target DNA	Primer (pmol)	Buffer	MgCl <sub>2</sub> (mM)	Taq polymerase (units)	dNTP (mM)	DNA (ng)	°C/T <sub>ID</sub>	Cycles	°C/T <sub>D</sub>	°C/T <sub>A</sub>	°C/T <sub>E</sub>	°C/T <sub>FE</sub>
<i>Cytb</i>	4	1X	2.25	0.5	0.25	25	94/5	35	94/30	50/45	72/1	72/7
<i>Cytb1</i>	7	1X	2.25	0.5	0.25	25	94/5	35	94/30	48/45	72/1	72/7
GHR	25	1X	2.0	1.0	0.25	25	94/5	45	94/45	52/60	72/1	72/7
CR	20	1X	2.5	1.0	0.20	50–100	94/5	45	94/45	58/45	72/45	72/5

## APPENDIX II

Outgroup samples sequenced and analyzed in this study (Hall 1981), localities by state and county, collector identification, loci sequenced per sample, and GenBank accession numbers indicated. *Cytb* = cytochrome *b*; CR = control region; GHR = exon 10 of the growth hormone receptor.

Taxa	Collection location	Collector <sup>a</sup>	Whole <i>Cytb</i> (n)	<i>Cytb1</i> (n)	CR (n)	GHR (n)	GenBank no.
<i>Tamiasciurus hudsonicus</i>	Washington, Lewis Co.	WA	1	1	0	1	See text
<i>Tamiasciurus hudsonicus</i>	—	—	0	1	0	0	AF147643
<i>Sciurus aberti</i>	—	—	0	1	0	0	SAU10173
<i>Sciurus carolinensis</i>	—	—	0	1	0	0	SCU46167
<i>Sciurus niger</i>	—	—	0	0	0	1	AF332032
<i>Sciurus vulgaris</i>	—	—	0	1	0	0	AB292681
<i>Glaucomys sabrinus</i>	—	—	0	1	0	0	GU473234
<i>Marmota marmota</i>	—	—	0	1	0	0	AF100711
<i>Marmota monax</i>	—	—	0	1	0	0	AF100719
<i>Marmota monax</i>	—	—	0	0	0	1	AM407917
<i>Marmota vancouverensis</i>	—	—	0	1	0	0	AF100717
<i>Spermophilus richardsonii</i>	—	—	0	1	0	0	AF157915
<i>Spermophilus townsendii</i>	—	—	0	1	0	0	AF157935
<i>Spermophilus lateralis</i>	—	—	0	1	0	0	AF157950
<i>Ammospermophilus leucurus</i>	—	—	0	1	0	0	DQ866061
<i>Tamias obscurus</i>	—	—	0	1	0	0	AF147653
<i>Tamias umbrinus</i>	—	—	0	1	0	0	AF147677
<i>Tamias striatus</i>	—	—	0	1	0	0	AF147673

<sup>a</sup> WA = Wendy Arjo. Samples without collection location and collector were downloaded from GenBank.