

Faunistic Composition, Ecological Properties, and Zoogeographical Composition of the Elateridae (Coleoptera) Family in the Western Black Sea Region of Turkey

Authors: Kabalak, Mahmut, and Sert, Osman

Source: Journal of Insect Science, 13(144) : 1-21

Published By: Entomological Society of America

URL: <https://doi.org/10.1673/031.013.14401>

BioOne Complete (complete.BioOne.org) is a full-text database of 200 subscribed and open-access titles in the biological, ecological, and environmental sciences published by nonprofit societies, associations, museums, institutions, and presses.

Your use of this PDF, the BioOne Complete website, and all posted and associated content indicates your acceptance of BioOne's Terms of Use, available at www.bioone.org/terms-of-use.

Usage of BioOne Complete content is strictly limited to personal, educational, and non - commercial use. Commercial inquiries or rights and permissions requests should be directed to the individual publisher as copyright holder.

BioOne sees sustainable scholarly publishing as an inherently collaborative enterprise connecting authors, nonprofit publishers, academic institutions, research libraries, and research funders in the common goal of maximizing access to critical research.



Faunistic composition, ecological properties, and zoogeographical composition of the Elateridae (Coleoptera) family in the Western Black Sea region of Turkey

Mahmut Kabalak^a, Osman Sert^b

Hacettepe University Faculty of Science Department of Biology 06800 Beytepe Ankara Turkey

Abstract

The main aim of this study was to understand the faunistic composition, ecological properties, and zoogeographical composition of the family Elateridae (Coleoptera) of the Western Black Sea region of Turkey. As a result, 44 species belonging to 5 subfamilies and 19 genera were identified. After adding species reported in the literature to the analysis, the fauna in the research area consists of 6 subfamilies, 23 genera and 72 species. Most of the Elateridae fauna of the Western Black Sea region were classified in the subfamilies Elaterinae and Dendrometrinae. The genus *Athous* was the most species-rich genus. The species composition of the Elateridae fauna of the Western Black Sea region partially overlaps with the known Elateridae fauna of Turkey. The Western Black Sea region shares the most species with the European part of the Western Palaearctic region, including many of those in the Elateridae family, compared to other regions. Comparisons of the three geographical regions of Turkey show that fauna composition, ecological properties, and zoogeographical compositions of the Middle and Western Black Sea regions are more similar to each other than to those of the Central Anatolian region.

Abbreviations: **Aust**, Australian region; **col.**, collector; **Dt-As**, decaying trees by aspirator; **ETr**, endemic to Turkey; **Ewp**, European part of the Western Palaearctic region; **Fe**, Far Eastern Asia; **Fhp-In**, ground herbaceous plants of the forest by insect net; **Ho**, Holarctic; **Hpfr-In**, herbaceous plants near fields and roads by insect net; **Hps-In**, herbaceous plants near streams by insect net; **Ma**, Middle Asia; **Me**, Middle East; **Na**, North Africa; **Nea**, Nearctic; **Ntr**, Neotropic; **Pa**, Palaearctic; **Sb**, Eastern and Western Siberian parts of Russia; **Tb-Ju**, trees and bushes by Japanese umbrella, **Uss-As**, under stones near streams by aspirator

Keywords: abundance, click beetles, distribution, habitat preference, phenology, species composition

Correspondence: ^a mahmut@hacettepe.edu.tr, ^b sert@hacettepe.edu.tr

Editor: Demian Kondo was editor of this paper.

Received: 20 April 2012, **Accepted:** 29 March 2013 **Published:** 7 December 2013

Copyright: This is an open access paper. We use the Creative Commons Attribution 3.0 license that permits unrestricted use, provided that the paper is properly attributed.

ISSN: 1536-2442 | Vol. 13, Number 144

Cite this paper as:

Kabalak M, Sert O. 2013. Faunistic composition, ecological properties, and zoogeographical composition of the Elateridae (Coleoptera) family in the Western Black Sea region of Turkey. *Journal of Insect Science* 13:144. Available online: www.insectscience.org/13.144

Introduction

The family Elateridae is the ninth largest family of Coleoptera and belongs to the superfamily Elateroidea (Lawrence 1982). The number of species of Elateridae in Turkey is increasing rapidly. According to various authors (Lawrence 1982; Booth et al. 1990; Lodos 1998; Demirsoy 1999; Laibner 2000), the family Elateridae has 6,000–10,000 described species. In Turkey, there are eight subfamilies, 65 genera, and almost 500 species belonging to Elateridae (Mertlik and Platia 2008; Kabalak and Sert 2009, 2010a, 2010b, 2011, 2012; Platia and Gudenzi 2009; Platia et al. 2009; Schimmel et al. 2009; Platia 2008, 2010a, 2010b, 2011a, 2011b, 2012; Platia et al. 2011; Sert and Kabalak 2011; Kabalak et al. 2013).

Turkey is at the intersection of three continents (Asia, Africa, and Europe) and three phytogeographical regions (Euro-Siberian, Irano-Turanian, and Mediterranean). It was divided into seven geographical regions (three inner regions and four coastal regions) and 21 sections of these regions at the first geography congress of Turkey in Ankara in 1941 (Atalay

and Mortan 1997). The research area covered the western part of the Black Sea region, which includes the Bartın, Bolu, Düzce, Karabük, Kastamonu, and Zonguldak provinces (Figure 1). The Western Black Sea region is the part of the Black Sea region of Turkey that contains the lower part of the river basins of the Kızılırmak and Sakarya rivers, moderately high mountain ranges, and large grooves that extend between the Küre mountains, the Ilgaz, and Aladağ-Köroğlu mountain ranges. The Küre mountains, which are composed of coastal mountain ranges, extend high above the coasts. They are disrupted by the Taşköprü-Boyabat groove and the Kastamonu plateau. The Ilgaz and Aladağ-Köroğlu mountain ranges, which have summits exceeding 2500 m a.s.l., extend to the inner part of the region. The Tosya-Ilgaz-Çerkeş-Gerede-Bolu-Düzce groove, which includes the Northern Anatolian fault, extends between the Ilgaz and Aladağlar mountain ranges. Like other parts of the Black Sea region, rainfall decreases towards the inner part of the Western Black Sea region. Annual precipitation is 500 mm in the grooves, which are deprived of rainfall. Temperatures in the inner region are higher than those of the coastal regions in summer and

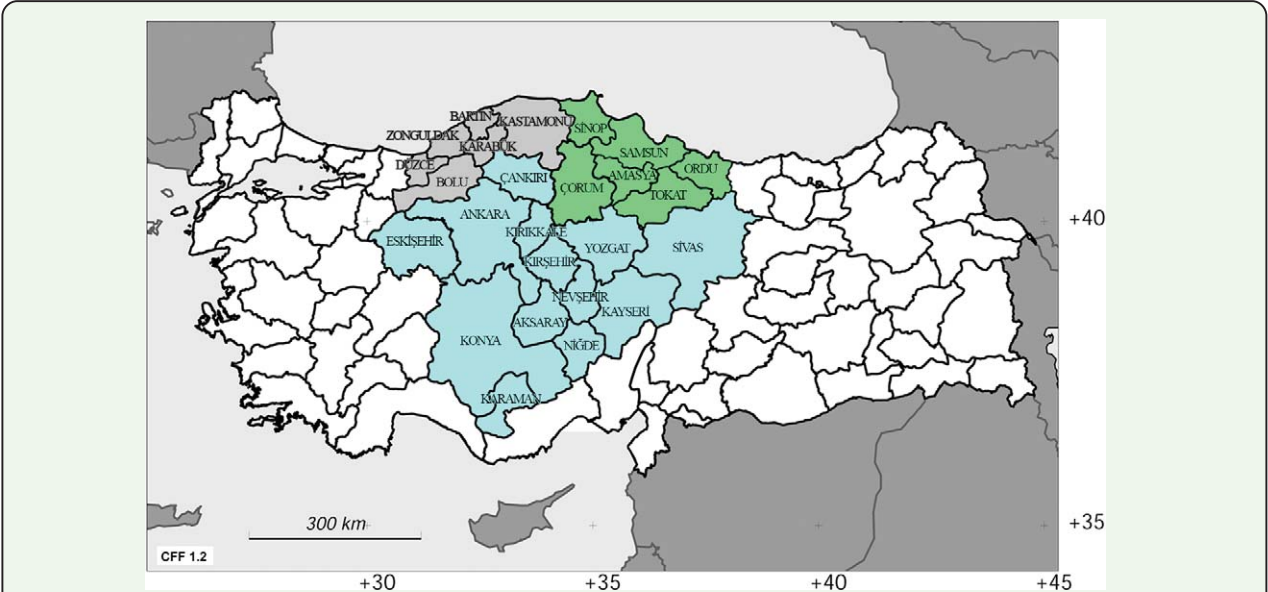


Figure 1. A map made in CFF (Barbier and Rasmont 1996, 2000) with modifications that shows the regions of the species collected. Grey: Western Black Sea region; light blue: Central Anatolian region; green: Middle Black Sea region. High quality figures are available online.

lower than those of the coastal regions in winter. The inner region receives more snow in the winter, and less precipitation in the summer, compared to the outer region. The Western Black Sea region is covered with ro-tund forests, as is the Eastern Black Sea region. There are broadleaf forests, which have dense *Fagus orientalis* Lipsky and *Cas-tanea sativa* Mill. populations in the mountainous zones. These broadleaf forests are replaced with coniferous forests (*Abies bornmülleriana* Mattf. and *Pinus sylvestris* L.) at high altitudes. Environmental conditions change suddenly towards the inner part of re-gion, especially on the Kastamonu plateau. Oak forests are the most common at lower altitudes, and coniferous forests are common at higher altitudes on the Kastamonu plateau. *P. nigra* Arnold. and a small amount of *P. syl-vestris* L. exist in the southern and southeastern mountainous parts of the region. The Bolu-Aladağlar mountains have the rich-est *P. sylvestris* L. forests in Turkey (Atalay and Mortan 1997; Güner et al. 2012).

The studied area is located in the Euro-Siberian and Irano-Turanian phytogeograph-ical region. The Euro-Siberian region exists largely within the Euxine province, which ex-tends throughout most of Caucasia and the Crimea and Dobrudja mountains. This region is essentially a belt of broadleaf deciduous forests, penetrated by conifers at higher alti-tudes. It is most closely related (especially in the east) to the Hyrcanian province of North-ern Iran and the adjacent Talysch region, but it also has similarities to the Balkans, central Europe, and even Atlantic Europe (Davis et al. 1971). The Irano-Turanian region is by far the largest of the three regions in Turkey, and apart from a few enclaves, is confined to Cen-tral and East Anatolia. Although it is a large area rich in herbaceous and suffruticose spe-cies, it is not as well understood as the

Mediterranean and Euro-Siberian regions. This is largely due to the difficulties in identi-fying the important genera. The broad forest zone of *Pinus nigra* Arnold. subsp. *pallasiana* (Lamb.) borders Central Anatolia in the north, west, and south. This forest meets the oak scrub (especially *Quercus pubescens* in the north and west and *Q. infectoria* Oliver sensu lato and *Q. cerris* L. in the west and south), the most abundant type of vegetation on the periphery of the central Anatolian steppes, which is usually associated with Irano-Turanian ground-flora. This Irano-Turanian scrub is most abundant in the north and west. The Irano-Turanian flora in Turkey is closely related to that of Transcaucasia, northwestern and western Iran, and northern Iraq (Davis 1965–1988).

There are some studies on the Elateridae fauna of the studied area, which were done mostly by foreign researchers. Most of these studies were limited in scope and generally consisted of descriptions of new species. Studies on Turkish Elateridae include the following: Guglielmi and Platia (1985), Platia (1989, 2003, 2004), Platia and Gudenzi (1996, 1998, 1999, 2000b, 2002, 2004, 2007), Mertlik (2000), Kabalak and Sert (2006), Mertlik and Dušánek (2006), and Mertlik and Platia (2008).

The main aim of this research was to study the faunistic composition (distributions of species, subfamilies, and genera), ecological properties (abundance, rarity, vertical distribution, habi-tat preference, and seasonality) of species, and the zoogeographical composition of the Elat-eridae fauna, which includes the zoogeographical pattern of the research area and comparisons of fauna between the West-ern Black Sea region and other geographical regions of Turkey.

Materials and Methods

Elateridae specimens were collected between May and July of 2005–2009 in the Bartın, Bolu, Düzce, Karabük, Kastamonu, and Zonguldak provinces. The coordinates of the localities were recorded using GPS. The data on the localities are given in the annotated checklist below. Species’ identities were determined using established keys (Gurjeva 1984; Platia 1994, 2003; Platia and Gudenzi 1998, 2000a, 2002, 2004; Laibner 2000). Specimens were deposited in the Hacettepe University Zoology Museum. In the Material Examined section, the collector’s name is listed at the end as ‘col.’.

Specimens were collected from ground herbaceous plants of the forest by an insect net (Fhp-In), herbaceous plants near streams by an insect net (Hps-In), herbaceous plants near fields and roads by an insect net (Hpfr-In), decaying trees (Populus spp. and Salix spp.) by an aspirator (Dt-As), trees and bushes by a Japanese umbrella (Tb-Ju), and under stones near streams by an aspirator (Uss-As). After finishing the fieldwork, the specimens were put in collections and the species’ identities were determined. The number of specimens, the habitat/method of collection, the month of collection, the altitude of collection, the distribution in other regions of Turkey, and the zoogeographical region are given for collected species (Table 1). The province of collection, month of collection, distribution in other re-

gions of Turkey, and zoogeographical distribution are also given for species reported in the literature (Table 2). Graphs showing the distributions of species according to their subfamily (Figure 2) and genera (Figure 3), the

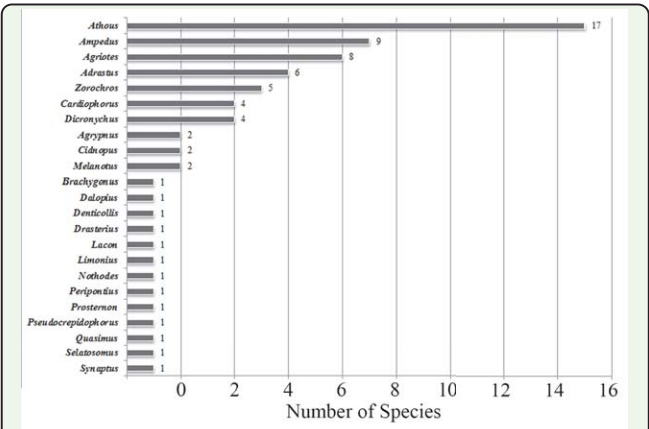


Figure 3. The number of species in each genus. High quality figures are available online.

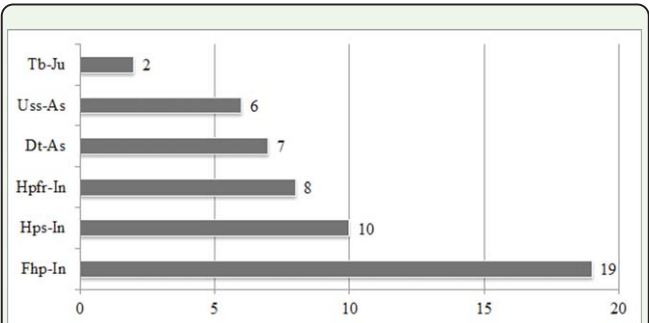


Figure 4. The number of species according to habitat/collection method. Dt-As: decaying trees by an aspirator, Fhp-In: forest ground herbaceous plants by an insect net, Hpfr-In: herbaceous plants near fields and roads by an insect net, Hps-In: herbaceous plants near streams by an insect net, Tb-Ju: trees and bushes by a Japanese umbrella, and Uss-As: under stones near streams by an aspirator. High quality figures are available online.

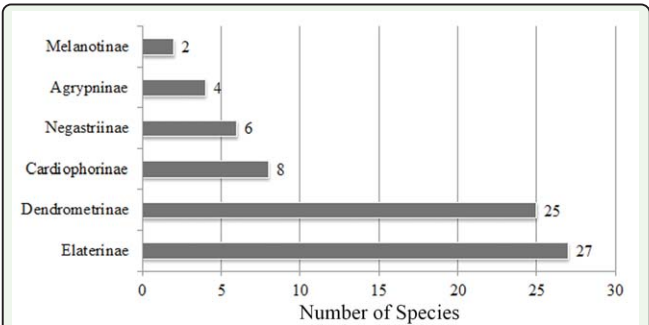


Figure 2. The number of species in each subfamily. High quality figures are available online.

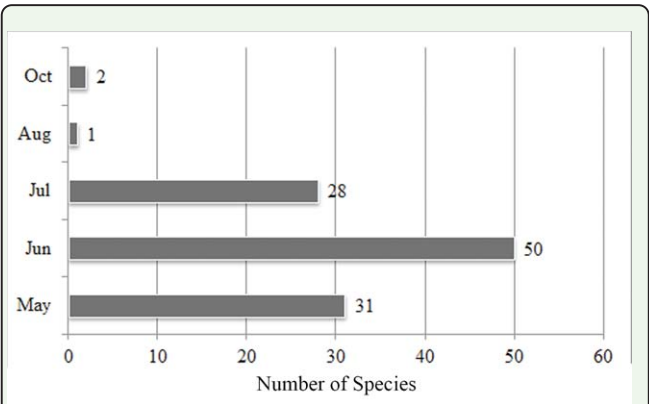


Figure 5. The number of species collected in each month. High quality figures are available online.

number of species according to the habitat/method of collection (Figure 4), the number of collected species for each month (Figure 5), the number of collected species from various altitudes (Figure 6), the zoogeographical regions of all species (Figure 7), and the number of species shared between differ-

ent regions of Turkey (Figure 8) are given.

Zoogeographical region definitions were taken from Cate (2007), and the zoogeographical statuses of species in Asia were classified within four sub-regions (Middle East, Middle Asia, Siberia, and Far East). As a result, the species were sorted as those endemic to Turkey (ETr), species found in the European part of the Western Palaearctic (Ewp) region, species found in the Eastern and Western Siberian parts of Russia (Sb), Middle Eastern species (including those from Syria, Iraq, Iran, Jordan, Israel, Palestine, Lebanon, the Arabian peninsula, the Sinai peninsula, and Cyprus) (Me), Middle Asian species (including those from Afghanistan, China, Kazakhstan, Kyrgyzstan, Mongolia, Uzbekistan, Turkmenistan, and Tadzhikistan) (Ma), Far Eastern Asian (Far Eastern Territory of Russian) species (Fe), North African (Na) species, Palaearctic species (Pa), Holarctic species (Ho), Australian species (Aust), and Nearctic species (Nea) (Table 1). Zoogeographical distributions of species are as reported in Platia (1994), Penev and Alekseev (1996), Cate (2007), and Mertlik and Platia (2008). A map of the studied area was made in CFF (Barbier and Rasmont 1996, 2000). The numbers of collected males and females could not be given because of difficulties arising from separating male and female specimens.

The faunistic composition, ecological properties, and zoogeographical composition of the Western Black Sea region are compared with those from the Central Anatolian region and the Middle Black Sea region (Figure 1).

Annotated checklist of Elateridae species of the Western Black Sea region of Turkey

Subfamily: Agrypninae Candèze, 1857

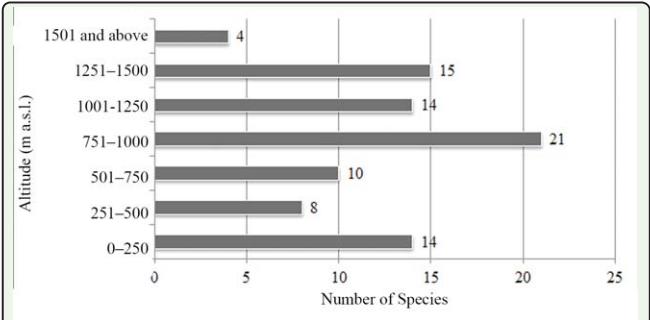


Figure 6. The number of species collected within each altitude zone. High quality figures are available online.

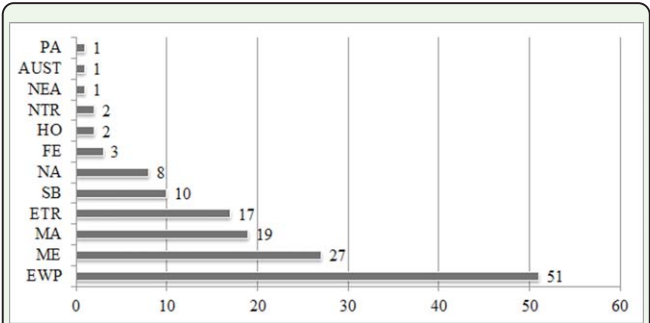


Figure 7. Distributions of species in various zoogeographical regions. **AUST**: Australian Region, **ETR**: Endemic species to Turkey, **EWP**: European part of the Western Palaearctic, **FE**: Far East, **HO**: Holarctic, **MA**: Middle Asia, **ME**: Middle East, **NA**: North Africa, **NEA**: Nearctic, **NTR**: Neotropical Region, **PA**: Palaearctic, and **SB**: Siberia (Cate 2007). High quality figures are available online.

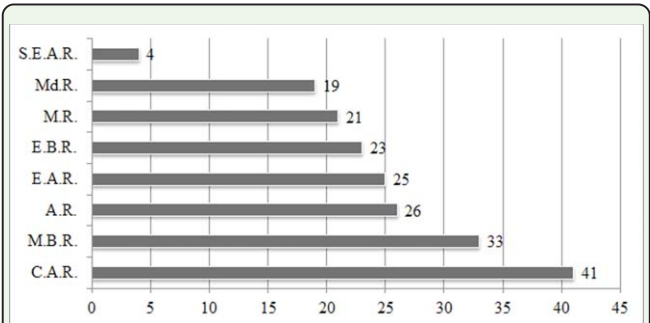


Figure 8. Number of species shared between the research area and other geographical regions of Turkey. **AR**: Aegean Region, **CAR**: Central Anatolian Region, **EAR**: Eastern Anatolian Region, **EBR**: Eastern Black Sea Region, **MR**: Marmara Region, **MBR**: Middle Black Sea Region, **MdR**: Mediterranean Region, **SEAR**: Southeastern Anatolian Region. High quality figures are available online.

Genus: *Drasterius* Eschscholtz, 1829

1. ***Drasterius bimaculatus*** (Rossi, 1790)

Examined Material: Bolu: Seben, 41°26'12" N, 31°35'29" E, 857 m a.s.l., 10.VI.2009, 1 specimen; **Kastamonu:** Tosya, 41°10'16" N, 34°03'03" E, 1189 m a.s.l., 17.VI.2009, 1 specimen; Araç, 41°59'51" N, 33°19'22" E, 702 m a.s.l., 04.VI.2008, 1 specimen; **Karabük:** Ovacık, 41°02'55" N, 32°48'22" E, 646 m a.s.l., 16.V.2009, 3 specimens; Ovacık, 41°05'49" N, 32°48'24" E, 643 m a.s.l., 16.V.2009, M. Kabalak col., 2 specimens.

Genus: *Lacon* Castelnau de Laporte, 1838

2. ***Lacon punctatus*** (Herbst, 1779)

Examined Material: Kastamonu: Şenpazar, 41°47'16" N, 33°10'28" E, 566 m a.s.l., 19.VI.2009, M. Kabalak col., 1 specimen.

Genus: *Agrypnus* Eschscholtz, 1829

3. ***Agrypnus crenicollis*** (Ménétriés, 1832)

Examined Material: Kastamonu: Tosya, 41°10'16" N, 34°03'03" E, 1189 m a.s.l., 17.VI.2009, M. Kabalak col., 1 specimen.

Subfamily: Dendrometrinae Gistel, 1856

Genus: *Limonius* Eschscholtz, 1829

4. ***Limonius minutus*** (Linnaeus, 1758)

Examined Material: Bolu: Gerede, 40°48'25" N, 32°11'18" E, 1400 m a.s.l., 07.VI.2009, 5 specimens; Gerede, 40°48'51" N, 32°12'00" E, 1674 m a.s.l., 07.VI.2009, 1 specimen; Gerede, 40°48'55" N, 32°11'56" E, 1656 m a.s.l., 07.VI.2009, 1 specimen; **Kastamonu:** Araç, 41°18'43" N, 33°35'53" E, 1132 m a.s.l.,

18.VI.2009, 1 specimen; **Zonguldak:** Saltukova, 10.VI.1994, M. Kabalak col., 1 specimen.

Genus: *Nothodes* LeConte, 1861

5. ***Nothodes parvulus*** (Panzer, 1799)

Examined Material: Karabük: Safranbolu, 41°18'35" N, 32°40'59" E, 782 m a.s.l., 17.V.2009, M. Kabalak col., 1 specimen.

Genus: *Athous* Eschscholtz, 1829

Subgenus: *Athous* Eschscholtz, 1829

6. ***Athous (A.) haemorrhoidalis*** (Fabricius, 1801)

Examined Material: Karabük: Eskipazar, 40°51'56" N, 32°38'35" E, 985 m a.s.l., 16.V.2009, M. Kabalak col., 1 specimen.

Subgenus: *Haplathous* Reitter, 1905

7. ***Athous (H.) marginicollis*** Reitter, 1890

Examined Material: Karabük: Eskipazar, 40°57'14" N, 32°25'23" E, 1263 m a.s.l., 07.VI.2009, M. Kabalak col., 1 specimen.

8. ***Athous (H.) subfuscus*** (O. F. Müller, 1764)

Examined Material: Bolu: Central County, 40°55'53" N, 31°43'08" E, 1370 m a.s.l., 08.VI.2009, 1 specimen; Gerede, 40°48'25" N, 32°11'18" E, 1400 m a.s.l., 07.VI.2009, M. Kabalak col., 7 specimens.

Subgenus: *Orthathous* Reitter, 1905

9. ***Athous (O.) daccordii*** Guglielmi and Platia, 1985

Examined Material: Kastamonu: Azdavay, 41°41'16" N, 33°23'59" E, 906 m a.s.l., 18.VI.2009, M. Kabalak col., 1 specimen.

10. *Athous (O.) paflagonensis* Platia and Gudenzi, 1998

Examined Material: Bartın: Central County, 41°41'59" N, 32°40'26" E, 375 m a.s.l., 14.VII.2008, 8 specimens; **Karabük:** Safranbolu, 41°28'18" N, 32°40'23" E, 271 m a.s.l., 13.VII.2008, M. Kabalak col., 2 specimens.

11. *Athous (O.) warchalowskii* Platia and Tarnawski, 1998

Examined Material: Bartın: Central County, 41°39'59" N, 32°13'29" E, 7 m a.s.l., 18.V.2009, 2 specimens; Ulus road Küllü village, 12.VI.2006, 1 specimen; Central County, 41°27'35" N, 32°15'32" E, 76 m a.s.l., 10.VI.2006, 3 specimens; **Bolu:** Central County, 40°50'53" N, 31°40'12" E, 1403 m a.s.l., 22.VII.2008, 11 specimens; **Karabük:** Safranbolu, 41°28'18" N, 32°40'23" E, 271 m a.s.l., 13.VII.2008, M. Kabalak col., 1 specimen.

Genus: *Denticollis* Piller and Mitterpacher, 1783

12. *Denticollis parallelcollis* Aubé, 1850

Examined Material: Bolu: Yedigöller Natural Park, 40°57'16" N, 31°44'47" E, 1360 m a.s.l., 08.VI.2009, M. Kabalak col., 1 specimen.

Genus: *Prosternon* Latreille, 1834

13. *Prosternon tessellatum* (Linnaeus, 1758)

Examined Material: Karabük: Eskipazar, 40°57'14" N, 32°25'23" E, 1263 m a.s.l., 07.VI.2009, 1 specimen; **Kastamonu:** Central County, 41°11'09" N, 34°00'06" E, 1263 m a.s.l., 17.VI.2009, 1 specimen; Central County, 41°22'08" N, 33°45'20" E,

894 m a.s.l., 18.VI.2009, M. Kabalak col., 1 specimen

Genus: *Pseudocrepidophorus* Dolin and Agajev, 1988

Pseudocrepidophorus flavescens (Eschscholtz, 1818)

Examined Material: Kastamonu: İnegöl, 41°59'13" N, 33°33'14" E, 635 m a.s.l., 19.VI.2009 M. Kabalak col., 1 specimen.

Subfamily: Elaterinae Leach, 1815

Genus: *Ampedus* Dejean, 1833

14. *Ampedus anatolicus* Platia and Gudenzi, 2002

Examined Material: Kastamonu: Tosya, 40°58'49" N, 34°11'06" E, 1147 m a.s.l., 18.V.2008, M. Kabalak col., 2 specimens.

15. *Ampedus cinnaberinus* (Eschscholtz, 1829)

Examined Material: Bolu: Kırışık, 40°25'14" N, 31°50'49" E, 924 m a.s.l., 02.V.2009, 1 specimen; **Kastamonu:** Tosya, 40°58'49" N, 34°11'06" E, 1147 m a.s.l., 18.V.2008, M. Kabalak col., 2 specimens.

16. *Ampedus elegantulus* (Schönherr, 1817)

Examined Material: Bartın: Kozcağız, 41°24'45" N, 32°20'28" E, 162 m a.s.l., 17.V.2009, M. Kabalak col., 1 specimen.

17. *Ampedus platiai* Schimmel, 1990

Examined Material: Karabük: Eskipazar, 40°54'38" N, 32°42'33" E, 1154 m a.s.l., 16.V.2009, M. Kabalak col., 2 specimens.

18. *Ampedus pomorum* (Herbst in Füssly, 1784)

Examined Material: Karabük: Eflani, 41°25'16" N, 32°48'52" E, 938 m

- a.s.l., 17.V.2009, M. Kabalak col., 1 specimen.
19. *Ampedus (A.) praeustus* (Fabricius, 1792)
Examined Material: Kastamonu: Tosya, 40°57'25" N, 34°12'32" E, 1489 m a.s.l., 20.V.2007, M. Kabalak col., 14 specimens.
20. *Ampedus (A.) rufipennis* (Stephens, 1830)
Examined Material: Bolu: Merkez, 40°39'34" N, 31°24'55" E, 868 m a.s.l., 03.V.2009, M. Kabalak col., 1 specimen.

Genus: Synaptus Eschscholtz, 1829

21. *Synaptus filiformis* (Fabricius, 1781)
Examined Material: Bartın: Central County, 41°38'15" N, 32°19'53" E, 10 m a.s.l., 10.VI.2006, 1 specimen; **Bolu:** Central County, 40°47'35" N, 31°38'29" E, 916 m a.s.l., 08.VI.2009, 2 specimens; **Karabük:** Eskipazar, 40°51'29" N, 32°38'01" E, 1295 m a.s.l., 16.V.2009, M. Kabalak col., 1 specimen.

Genus: Peripontius Gurjeva, 1979

22. *Peripontius terminatus* (Erichson, 1842)
Examined Material: Bartın: Ulus, 41°35'50" N, 32°41'53" E, 213 m a.s.l., 13.VII.2008, M. Kabalak col., 1 specimen.

Genus: Adrastus Eschscholtz, 1829

23. *Adrastus anatolicus* Platia and Schimmel, 1991
Examined Material: Bartın: Central County, 41°38'15" N, 32°19'53" E, 10 m a.s.l., 10.VI.2006, 14 specimens; **Bolu:** Göynük, 40°27'07" N, 30°55'45" E, 894 m a.s.l., 21.VII.2008, M. Kabalak col., 2 specimens.

24. *Adrastus circassicus* Reitter, 1896

Examined Material: Kastamonu: Şenpazar, 41°47'16" N, 33°10'28" E, 566 m a.s.l., 9.VI.2009, 1 specimen; Cide, 41°51'57" N, 33°03'13" E, 634 m a.s.l., 19.VI.2009, 15 specimens; Doğanyurt, 41°59'13" N, 33°33'14" E, 635 m a.s.l., 19.VI.2009, M. Kabalak col., 1 specimen.

25. *Adrastus montanus* (Scopoli, 1763)

Examined Material: Bartın: Central County, 41°27'35" N, 32°15'32" E, 76 m a.s.l., 10.VI.2006, M. Kabalak col., 1 specimen.

Genus: Agriotes Eschscholtz, 1829

27. *Agriotes acuminatus* (Stephens, 1830)
Examined Material: Bolu: Central County, 40°54'20" N, 31°40'39" E, 1539 m a.s.l., 08.VI.2009, 1 specimen; **Düzce:** Yığılca, 40°59'02" N, 31°39'42" E, 1185 m a.s.l., 19.VI.2009, 3 specimens; Kaynaşlı, 40°40'07" N, 31°16'17" E, 920 m a.s.l., 09.VI.2009, M. Kabalak col., 1 specimen.
28. *Agriotes infuscatus* Desbrochers des Loges, 1870
Examined Material: Bartın: Kumluca, 41°23'50" N, 32°29'04" E, 511 m a.s.l., 18.V.2009, 1 specimen; **Bolu:** Central County, 40°56'17" N, 31°44'44" E, 1366 m a.s.l., 08.VI.2009, 3 specimens; Central County 40°39'34" N, 31°24'55" E, 868 m a.s.l., 03.V.2009, 5 specimens; Central County, 40°51'35" N, 31°41'00" E, 1353 m a.s.l., 08.VI.2009, 1 specimen; Central County, 40°55'53" N, 31°43'08" E, 1370 m a.s.l., 08.VI.2009, 4 specimens; Central County, 40°47'35" N, 31°38'29" E, 916 m a.s.l., 08.VI.2009, 1 specimen; **Düzce:** Yığılca, 40°59'02" N, 31°39'42" E, 1185 m (9

- ex.) 08.VI.2009, Kaynaşlı (40°39'45" N 31°16'14" E) 1050 m a.s.l., 09.VI.2009, 3 specimens; Kaynaşlı, 40°40'07" N, 31°16'17" E, 920 m a.s.l., 09.VI.2009, 5 specimens; Gölyaka, 40°43'08" N, 31°02'47" E, 720 m a.s.l., 09.VI.2009, 3 specimens; **Karabük:** Safranbolu, 41°21'58" N, 32°46'03" E, 940 m a.s.l., 17.V.2009, 2 specimens; Safranbolu, 41°18'35" N, 32°40'59" E, 782 m a.s.l., 17.V.2009, 1 specimen; **Kastamonu:** Central County, 41°20'09" N, 33°38'14" E, 1221 m a.s.l., 18.VI.2009, M. Kabalak col., 1 specimen.
29. *Agriotes paludum* Kiesenwetter, 1859
Examined Material: Bartın: Kozcağız, 41°19'15" N, 32°22'52" E, 462 m a.s.l., 17.VII.2008, 2 specimens; Ulus, 41°28'40" N, 32°33'09" E, 483 m a.s.l., 13.VII.2008, 1 specimen; Central County, 41°27'35" N, 32°15'32" E, 76 m a.s.l., 10.VI.2006, 1 specimen; **Karabük:** Safranbolu, 41°18'35" N, 32°40'59" E, 782 m a.s.l., 17.V.2009, M. Kabalak col., 1 specimen.
30. *Agriotes proximus* Schwarz, 1891
Examined Material: Bartın: Central County, 41°37'59" N, 32°11'43" E, 371 m a.s.l., 18.V.2009, 1 specimen; Central County, 41°27'35" N, 32°15'32" E, 76 m a.s.l., 10.VI.2006, 2 specimens; Kozcağız, 41°19'15" N, 32°22'52" E, 462 m a.s.l., 17.VII.2009, 2 specimens; Ulus, 41°28'40" N, 32°33'09" E, 483 m 13.VII.2008, 1 specimen; **Bolu:** Central County, 40°38'19" N, 31°48'29" E, 1516 m a.s.l., 03.V.2009, 6 specimens; **Karabük:** Eskipazar, 40°54'38" N, 32°42'33" E, 1154 m a.s.l., 16.V.2009, 1 specimen; Eskipazar, 40°51'29" N, 32°38'01" E, 1295 m a.s.l., 16.V.2009, 1 specimen; Safranbolu, 41°21'58" N, 32°46'03" E, 940 m a.s.l., 17.V.2009, 1 specimen; Eskipazar, 40°51'56" N, 32°38'35" E, 985 m a.s.l., 16.V.2009, 1 specimen; Eskipazar, 40°56'30" N, 32°31'21" E, 730 m a.s.l., 07.VI.2009, 1 specimen; **Düzce:** Kaynaşlı, 40°39'45" N, 31°16'14" E, 1050 m a.s.l., 09.VI.2009, 1 specimen; Cumayeri, 40°49'45" N, 30°59'23" E, 169 m a.s.l., 09.VI.2009, 1 specimen; Yığılca 40°59'02" N, 31°39'42" E, 1185 m a.s.l., 08.VI.2009, M. Kabalak col., 1 specimen.
31. *Agriotes sputator* (Linnaeus, 1758)
Examined Material: Bartın: Central County, 41°19'15" N, 32°22'52" E, 462 m a.s.l., 10.VI.2006, 1 specimen; Ulus, 41°34'40" N, 32°36'58" E, 298 m a.s.l., 10.VI.2006, 1 specimen; Ulus, 41°33'05" N, 32°36'28" E, 159 m a.s.l., 12.VI.2006, 1 specimen; Ulus, 41°39'29" N, 32°44'39" E, 301 m a.s.l., 13.VII.2008, 1 specimen; Kozcağız, 41°24'45" N, 32°20'28" E, 162 m a.s.l., 17.V.2009, 1 specimen; **Düzce:** Kaynaşlı, 40°40'07" N, 31°16'17" E, 920 m a.s.l., 09.VI.2009, 1 specimen; **Karabük:** Eskipazar, 40°51'56" N, 32°38'35" E, 985 m a.s.l., 16.V.2009, 1 specimen; Eskipazar, 40°57'14" N, 32°25'23" E, 1263 m a.s.l., 07.VI.2009, 1 specimen; **Kastamonu:** Central County, 41°15'29" N, 33°51'44" E, 1022 m a.s.l., 17.VI.2009, M. Kabalak col., 2 specimens.
32. *Agriotes ustulatus* (Schaller, 1783)
Examined Material: Kastamonu: Cide, 41°51'57" N, 33°03'13" E, 634 m a.s.l., 19.VI.2009, M. Kabalak col., 2 specimens.

Genus: *Dalopius* Eschscholtz, 1829

33. *Dalopius marginatus* (Linnaeus, 1758)

Examined Material: Bolu: Central County, 40°51'35" N, 31°41'00" E, 1353 m a.s.l., 08.VI.2009, 2 specimens; **Düzce:** Kaynaşlı, 40°40'07" N, 31°16'17" E, 920 m a.s.l., 09.VI.2009, 1 specimen; **Karabük:** Eskipazar, 40°57'14" N, 32°25'23" E, 1263 m a.s.l., 07.VI.2009, M. Kabalak col., 1 specimen.

Subfamily: Negastrinae Nakane and Kishii 1956

Genus: *Quasimus* Gozis, 1886

34. *Quasimus minutissimus* (Germar, 1817)

Examined Material: Bartın: Central County, 41°39'56" N, 32°13'48" E, 167 m a.s.l., 22.V.2005, 41 specimens; Kozcağız, 41°24'45" N, 32°20'28" E, 162 m a.s.l., 17.V.2009, 10 specimens; Central County, 41°37'59" N, 32°11'43" E, 371 m a.s.l., 18.V.2009, 10 specimens; Central County, 41°37'12" N, 32°10'06" E, 161 m a.s.l., 18.V.2009, 4 specimens; Central County, 41°36'44" N, 32°09'45" E, 50 m a.s.l., 18.V.2009, 10 specimens; Central County, 41°39'23" N, 32°13'35" E, 205 m a.s.l., 12.VI.2006, 2 specimens; Central County, 41°39'54" N, 32°13'45" E, 160 m a.s.l., 22.V.2005, 38 specimens; Central County, 41°39'16" N, 32°13'25" E, 22.V.2005, 214 m a.s.l., 4 specimens; Central County, 41°36'53" N, 32°26'26" E, 34 m a.s.l., 22.V.2005, 2 specimens; Central County 41°39'61" N, 32°13'07" E, 17 m a.s.l., 22.V.2005, 1 specimen; Central County, 41°39'57" N, 32°13'28" E, 14 m a.s.l., 22.V., 1 specimen; **Karabük:** Eflani, 41°25'21" N, 32°48'37" E, 915

m a.s.l., 17.V.2009, 17 specimens; Safranbolu, 41°26'05" N, 32°46'04" E, 428 m a.s.l., 17.V.2009, 13 specimens; Eskipazar, 40°57'14" N, 32°25'23" E, 1263 m a.s.l., 07.VI.2009, 1 specimen; **Kastamonu:** Cide, 41°51'57" N, 33°03'13" E, 634 m a.s.l., 19.VI.2009, 66 specimens; Araç, 41°21'04" N, 33°20'25" E, 1115 m a.s.l., 18.VI.2009, 9 specimens; İnebolu, 41°49'53" N, 33°42'33" E, 646 m a.s.l., 19.VI.2009, 3 specimens; Central County, 41°11'09" N, 34°00'06" E, 1263 m a.s.l., 17.VI.2009, 53 specimens; Central County, 41°22'08" N, 33°45'20" E, 894 m a.s.l., 18.VI.2009, 1 specimen; Araç, 41°21'04" N, 33°20'25" E, 1115 m a.s.l., 18.VI.2009, M. Kabalak col., 9 specimens.

Genus: *Zorochros* C. G. Thomson, 1859

35. *Zorochros alysidotus* (Kiesenwetter, 1858)

Examined Material: Karabük: Yenice, 41°14'01" N, 32°21'39" E, 197 m a.s.l., 17.V.2009, M. Kabalak col., 17 specimens.

36. *Zorochros meridionalis* (Laporte de Castelnau, 1840)

Examined Material: Düzce: Akçakoca, 41°01'04" N, 30°59'58" E, 45 m a.s.l., 09.VI.2009, 1 specimen; **Karabük:** Ovacık, 41°05'49" N, 32°48'24" E, 643 m a.s.l., 16.V.2009, 12 specimens; Yenice, 41°18'39" N, 32°22'45" E, 331 m a.s.l., 17.V.2009, 15 specimens; Yenice, 41°14'01" N, 32°21'39" E, 197 m a.s.l., 17.V.2009, 1 specimen; **Kastamonu:** Araç, 41°59'51" N, 33°19'22" E, 702 m a.s.l., 04.VI.2008, 4 specimens; Araç, 41°02'14" N, 33°18'51" E, 702 m a.s.l., 04.VI.2008, 1 specimen; Tosya, 41°10'16" N,

- 34°03'03" E, 1189 m a.s.l., 17.VI.2009, M. Kabalak col., 5 specimens.
37. *Zorochros pilosellus* (Reitter, 1895)
Examined Material: Kastamonu: Araç, 40°59'51" N, 33°19'22" E, 702 m a.s.l., 04.VI.2008 4 specimens; Araç, 41°02'14" N, 33°18'51" E, 702 m a.s.l., 04.VI.2008, M. Kabalak col., 12 specimens.
38. *Zorochros stibicki* (Leseigneur, 1970)
Examined Material: Düzce: Akçakoca, 41°01'04" N, 30°59'58" E, 45 m a.s.l., 09.VI.2009, 7 specimens; **Karabük:** Eskipazar, 40°51'29" N, 32°38'01" E, 1295 m a.s.l., 16.V.2009, M. Kabalak col., 1 specimen.

Subfamily: Cardiophorinae Candèze, 1860

Genus: *Cardiophorus* Eschscholtz, 1829

Subgenus: *Cardiophorus* Eschscholtz, 1829

39. *Cardiophorus (C.) anticus* Erichson, 1840
Examined Material: Karabük: Eflani, 41°25'16" N, 32°48'52" E, 938 m a.s.l., 17.V.2009, M. Kabalak col., 1 specimen.
40. *Cardiophorus dolini* Mardjanian, 1985
Examined Material: Bolu: Seben, 40°26'12" N, 31°35'29" E, 857 m a.s.l., 10.VI.2009, 1 specimen; **Karabük:** Safranbolu, 41°28'18" N, 32°40'23" E, 271 m a.s.l., 13.VII.08, M. Kabalak col., 1 specimen.
41. *Cardiophorus (C.) vestigialis* Erichson, 1840
Examined Material: Kastamonu: Merkez, 41°20'09" N, 33°38'14" E, 1221 m a.s.l., 18.VI.2009, M. Kabalak col., 1 specimen.
- Genus: *Dicronychus*** Brullè, 1832
42. *Dicronychus cinereus* (Herbst, 1784)

Examined Material: Bolu: Central County, 40°47'35" N, 31°38'29" E, 916 m a.s.l., 08.VI.2009, M. Kabalak col., 1 specimen.

43. *Dicronychus obscuripennis* (Pic, 1899)

Examined Material: Bartın: Central County, 41°40'25" N, 32°13'49" E, 16 m a.s.l., 21.V.2005, 1 specimen; **Kastamonu:** Tosya, 40°58'49" N, 34°11'06" E, 1147 m a.s.l., 18.V.2008, M. Kabalak col., 1 specimen.

44. *Dicronychus senaci* Desbrochers des Loges, 1870

Examined Material: Bolu: Gerede, 40°48'51" N, 32°12'00" E, 1674 m a.s.l., 07.VI.09, 16 specimens; Merkez, 40°47'35" N, 31°38'29" E, 916 m a.s.l., 08.VI.09, 2 specimens; **Kastamonu:** Merkez, 41°11'09" N, 34°00'06" E, 1263 m a.s.l., 17.VI.2009, M. Kabalak col., 2 specimens.

Results and Discussion

Faunistic composition of the Western Black Sea region

Species of the subfamilies Elaterinae (27 species, 37.5%) and Dendrometrinae (25 species, 34.7%) comprise most of the studied area's Elateridae fauna. The numbers of species in the subfamilies Cardiophorinae, Negastrinae, Agrypninae, and Melanotinae are shown in Figure 2. The number of species in the genera are shown in Figure 3.

Distributions of species, according to their genera, are compared with the Elateridae fauna of Turkey in Table 3. The distributions of species in each genus show that the Elateridae fauna found in this study partially overlap with the Elateridae fauna of Turkey.

Ecological properties of the Elateridae fauna of the Western Black Sea region of Turkey

In total, 614 specimens were collected. *Quasimus minutissimus* (295 specimens) was the most abundant species. *Adrastus montanus*, *Agrypnus crenicollis*, *Ampedus* (*Ampedus*) *elegantulus*, *A. (A.) pomorum*, *A. (A.) rufipennis*, *Athous* (*Athous*) *haemorrhoidalis*, *A. (Haplathous) marginicollis*, *A. (Orthathous) daccordii*, *Cardiophorus* (*Cardiophorus*) *anticus*, *C. (C.) vestigialis*, *Denticollis parallelcollis*, *Dicronychus cinereus*, *Lacon punctatus*, *Nothodes parvulus*, *Peripontius terminatus*, and *Pseudocrepidophorus flavescens* were the rarest species, which were represented with one specimen each. More frequently collected species may have dense populations, and less frequently collected species may have sparse populations in nature. On the other hand, there are three additional possibilities for these results. Species may have been collected on dates with abnormally low or high density populations, the habitat chosen for collection may have had an abnormal population density, and certain species may have been collected more or less frequently by particular collecting methods.

Variable numbers of species were collected from various habitats using different collecting methods (Table 1 and Figure 4). More than half of the species were collected from forest habitats. This result parallels that of the wealth of the Western Black Sea forest area and draws attention to the importance of protecting the forests in the studied area. Using additional collection methods (light trap, window trap, pitfall trap, etc.) in future studies may yield information about habitat preferences and the activity periods (nocturnal species, diurnal species, etc.) of Elateridae species in the research area.

Species distributions by collection month are given in Table 1 and Figure 5.

Species were collected from various altitudes. An evaluation of the vertical distributions of species was made in terms of seven vertical 250 m intervals (A to G) from 0 to 1674 m a.s.l. as shown in Table 1. The results showed differences in the vertical distributions of species. In addition, the collection frequencies of species from each interval were different. The most diverse range was the D interval, with 21 species, and it was followed by the F interval (15 species), the A and E intervals (14 species each), the C interval (10 species), the B interval (8 species), and the G interval (4 species) (Figure 6). *Agriotes proximus*, which was the most widely distributed species, was present in all intervals. *Quasimus minutissimus*, which was the second most widely distributed species, was present in all vertical intervals except G.

Zoogeographical composition of the Elateridae fauna of the Western Black Sea region of Turkey

According to the literature, 17 species are endemic to Turkey. The rest of the species are also distributed in the European part of the Western Palaearctic (51 species), the Middle East (27 species), Middle Asia (19 species), Siberia (10 species), North Africa (8 species), the Far East (3 species), the Neotropic (2 species), the Holarctic (2 species), the Palaearctic (1 species), the Nearctic (1 species), and Australia (1 species). Therefore, the fauna of Turkey have important relationships with the fauna of Europe, North Africa, and Asia. The studied area shares the most species (51 species) with the European part of the Western Palaearctic, which is probably due to their similar floristic and climatic features. Asia (the Far East, Middle Asia, the Middle East,

and Siberia) comes after the European part of the Western Palaearctic with 35 species shared with Turkey. According to Penev and Alekseev (1996) and Cate (2007), some recorded species are distributed in the Australian, Nearctic, Neotropic, Palaearctic (*Cardiophorus vestigialis*), and Holarctic (*Agriotes sputator* and *Agrypnus murinus*) regions as well as the whole Palaearctic region except for North Africa (*Agriotes lineatus*). According to Cate (2007), comparisons between the fauna of the studied area and those of the Western Palaearctic countries and territories show that the studied area shares the most species with Greece (47 species) and Italy (42 species). It also shares species with Bulgaria and the Southern European territory of Russia (41 species each), France (38 species), Hungary and Romania (37 species each), Austria, Croatia, Germany, and Spain (35 species each), the Czech Republic, Slovakia, and Slovenia (34 species each), Switzerland and Ukraine (33 species each), Azerbaijan, Armenia, Georgia, and Poland (31 species each), and Belgium and Moldavia (29 species each). On the other hand, despite its close proximity, the studied area shares few species with Iran (23 species), Syria (13 species), and Iraq (1 species). This may be explained by the floristic, faunistic, and climatic similarities between European countries and the Western Black Sea area.

Distributions of species in other regions of Turkey are reported in Tables 1 and 2. According to the literature, the studied area shares 41 species with the Central Anatolian region, 33 species with the Middle Black Sea region, 26 species with the Aegean region, 25 species with the Eastern Anatolian region, 23 species with the Eastern Black Sea region, 21 species with the Marmara region, 19 species with the Mediterranean region, and 4 species with the South Eastern Anatolian region of

Turkey (Figure 8). These results indicate that the studied area shares most of its species with the Central Anatolian region, likely due to its geographical proximity.

Comparisons with the Central Anatolian and the Middle Black Sea regions

The results of the faunistic composition, ecological properties, and zoogeographical composition of the Western Black Sea region were compared with previous studies conducted in the Central Anatolian region (Kabalak and Sert 2011) and the Middle Black Sea region (Sert and Kabalak 2011). According to comparisons of faunistic compositions, the richest subfamily in all three of these regions is the subfamily Elaterinae. The second and third richest subfamilies are the same for the Western and Middle Black Sea regions (Dendrometrinae and Cardiophorinae) but in the opposite order for the Central Anatolian region (Cardiophorinae and Dendrometrinae). Species richness in the three regions is similar. The genera *Cardiophorus*, *Agriotes*, and *Ampedus* are abundant in the Central Anatolian region, while the genera *Athous*, *Ampedus*, and *Agriotes* are abundant in the Western and Middle Black Sea regions. *Athous* is the most abundant genus in the Western Black Sea region.

According to comparisons of ecological properties, the most abundant species in the Central Anatolian region is *Agriotes paludum*, while it is *Quasimus minutissimus* in the Middle and Western Black Sea regions. In the Central Anatolian region, the highest number of the species was collected from herbaceous plants near streams (Hps), whereas most species were collected from ground herbaceous plants of forests (Fhp) in both the Middle and Western Black Sea regions. The highest numbers of species were recorded in May in the Central Anatolian region and the

Middle Black Sea region, whereas the highest number of species was recorded in June in the Western Black Sea region. In the Central Anatolian and Middle Black Sea regions, the highest number of species was collected from interval E (1001–1250 m a.s.l.), whereas the highest number of species was collected from interval D (751–1000 m a.s.l.) in the Western Black Sea region. There were differences in the vertical distributions of species in the Central Anatolian (*Agriotes paludum*), Middle Black Sea (*Adrastus anatolicus*), and Western Black Sea (*Agriotes proximus*) regions.

Zoogeographical compositions of the Central Anatolian, Middle Black Sea, and Western Black Sea regions are very similar. These regions, followed by the Middle East and Middle Asia, share the most species with the European part of the Western Palaearctic region. On the other hand, the Western Black Sea region has the highest number of endemic species among these three regions. There are some additional differences between these regions. The Central Anatolian region shares the highest number of species with the Mediterranean region, whereas the Middle and Western Black Sea regions share the highest number of species with the Central Anatolian region. This may seem contradictory; however, this could be explained by the different faunistic structures of these regions. Comparisons of the three regions show that the faunistic structures, ecological properties, and zoogeographical compositions of the Middle and Western Black Sea regions are more similar to each other than to those of the Central Anatolian region. Similar geographical, climatic, and floristic properties of the Middle and Western Black Sea regions are likely the main reasons for the faunistic, ecological and zoogeographical similarities.

Turkey has rich Elateridae fauna, and many new species were reported recently. In addition, there is a lack of comprehensive studies in different geographical regions of Turkey. Future studies, including descriptions of new species of other geographical regions of Turkey, can extend the results of this research.

Acknowledgements

We would like to thank to Dr. Howard Men-
del (Natural History Museum, London) for his great help and hospitality in accessing the Elateridae collection held in the Natural History Museum, London, Dr. Giuseppe Platia for checking the identification of species, and M.Sc. Yavuz Turan for valuable help during field studies. The first author received a grant (GB-TAF-5423) from the SYNTHESYS project (<http://www.synthesys.info>), financed by the European Community Research Infrastructure Action under the FP6 “Structuring the European Research Area” programme for studying at the Natural History Museum, London, between July 6th and 17th, 2009. A part of this study was presented as “Faunistic and Zoogeographical Evaluations on the Family Elateridae (Coleoptera) of the Western Black Sea region of Turkey” at the IX European Congress of Entomology, Budapest, Hungary in 2010.

References

- Atalay İ, Mortan K. 1997. *Türkiye Bölgesel Coğrafyası*. İnkılâp Kitabevi.
- Barbier Y, Rasmont P. 1996. Carto Fauna-Flora. *Cartographie des données biologiques*. Version 1.2 et utilitaires. Université de Mons-Hainaut.
- Barbier Y, Rasmont P. 2000. Carto Fauna-Flora 2.0. *Guide d'utilisation*. Université de

Mons-Hainaut.

Booth RG, Cox ML, Madge RB. 1990. *Guides to Insects of Importance to Man*. 3. *Coleoptera*. International Institute of Entomology.

Cate P. 2007. Family Elateridae. In: Löbl I, Smetana A, Editors. *Catalogue of Palaearctic Coleoptera, Vol. 4: Elateroidea, Derodontoidea, Bostrichoidea, Lymexyloidea, Cleroidea and Cucujoidea*. pp. 89–209. Apollo Books.

Davis PH. 1965–1988. *Flora of Turkey and the East Aegean Islands*. Edinburgh University Press.

Davis PH, Happer PC, Hedge IC. 1971. *Plant Life of Southwest Asia*. The Botanical Society of Edinburgh.

Demirsoy A. 1999. *Yaşamın Temel Kuralları Entomoloji Cilt II/Kısım II*. Meteksan A. Ş.

Dušánek V, Mertlik J. 2007. Land of Athouses—the usual day of entomologists in Turkey (Coleoptera, Elateridae). *Elateridarium* 1: 68–72.

Guglielmi A, Platia G. 1985. Contributo alla conoscenza degli Elateridi di Grecia e Turchia (Coleoptera). *Fragmenta Entomologica* 18(1):169–224.

Gurjeva EL. 1984. Palearctic species of *Prosternon* Latreille, 1834 (Coleoptera, Elateridae). *Entomological Review* 63(3): 120–123.

Gülperçin N, Tezcan S. 2009. Faunistic notes on the species of Elateridae (Coleoptera) in İzmir province of Turkey. *Munis Entomology and Zoology* 4(2): 519–526.

Gülperçin N, Tezcan S, 2010. *Türkiye Elateridae (Insecta: Coleoptera) Faunasının Dağılım Kataloğu*. Ege Üniversitesi Ziraat Fakültesi, İzmir.

Güner A, Aslan S, Ekim T, Vural M, Babaç MT, Editors. 2012. *Türkiye Bitkileri Listesi (Damarlı Bitkiler)*. Nezahat Gökyiğit Botanik Bahçesi ve Flora Araştırmaları Derneği Yayını.

Kabalak M, Sert O. 2005. Ankara İli Elateridae (Coleoptera) familyası türleri üzerinde faunistik çalışmalar. *Türkiye Entomoloji Dergisi* 29 (1): 49–60.

Kabalak M, Sert O. 2006. New record of *Melanotus bajulus* (Erichson, 1841) (Coleoptera: Elateridae) for the Turkish Fauna. *The Coleopterists Bulletin* 60 (3): 216.

Kabalak M, Sert O. 2009. A new *Agriotes* (Coleoptera, Elateridae) species from Turkey. *Turkish Journal of Biology* 33(4) 451–455.

Kabalak M, Sert O. 2010a. A New Species of *Athous* Eschscholtz in the Subgenus *Orthathous* Reitter (Coleoptera: Elateridae) from Turkey. *The Coleopterists Bulletin* 64(2): 119–121.

Kabalak M, Sert O. 2010b. Notes on four species of click beetles (Coleoptera: Elateridae) from Turkey. *The Coleopterists Bulletin* 64(2): 160–162.

Kabalak M, Sert O. 2011. Faunistic composition, ecological properties and zoogeographical composition of the family Elateridae (Coleoptera) of the Central Anatolian Region of Turkey. *Journal of Insect Science* 11:57. Available online: <http://www.insectscience.org/11.57/>

Kabalak M, Sert O. 2012. A new species, *Athous (Orthathous) cagatayae*, from Turkey. *Journal of Insect Science* 12:130. Available online: <http://www.insectscience.org/12.130/>

Kabalak M, Sert O, Özgen İ, Platia G. 2013. A new species of the *Agriotes nuceus* species group from Turkey. *Journal of Insect Science* 13:17. Available online: <http://www.insectscience.org/13.17/>

Kesdek M, Platia G, Yıldırım E. 2006. Contribution to the knowledge of click-beetles (Coleoptera: Elateridae) fauna of Turkey. *Entomofauna* 27(35): 417–432.

Laibner S. 2000. *Elateridae of the Czech and Slovak Republics České a Slovenské Republiky*. Zlín Kabourek.

Lawrence JF. 1982. Coleoptera. In: Parker SP, Editor. *Synopsis and Classification of living organisms*. pp. 482–553. McGraw-Hill.

Lodos N. 1998. *Türkiye Entomolojisi VI (Genel, Uygulamalı ve Faunistik)*. Ege Üniversitesi Ziraat Fakültesi Yayınları No: 529.

Lohse GA. 1979. Elateridae. In: Freude H, Harde KW, Lohse GA, Editors. *Die Käfer Mitteleuropas*, volume 6. pp. 103–186. Goecke and Evers.

Mertlik J. 2000. Contribution to the knowledge of Turkish species of the genus *Selatosomus* (Coleoptera: Elateridae). *Folia Heyrovskyana* 8(1): 1–15.

Mertlik J, Dušánek V. 2006. Description of five new species of click-beetles (Coleoptera, Elateridae) from the Palaearctic region with remarks about the distributions 22 additional

species. *Folia Heyrovskyana* 13(4): 145–162.

Mertlik J, Platia G. 2008. Catalogue of the family Cebrionidae, Elateridae, Lissomidae, Melasidae and Throscidae (Coleoptera) from Turkey. *Elateridarium* 2: 1–40.

Penev DL, Alekseev SK. 1996. The Click-Beetles of North Ossetia, Caucasus: Fauna, Habitat Distribution, and Biogeography (Coleoptera: Elateridae). *Stuttgarter Beiträge zur Naturkunde Ser. A* 548: 1–19.

Platia G. 1989: Descrizione di nuove specie di Elateridi della Grecia e Turchia (Coleoptera, Elateridae). *Lavori - Società Veneziana di Scienze Naturali* 14(1): 79–86.

Platia G. 1994. *Fauna d'Italia, Coleoptera Elateridae*. Edizioni Calderini.

Platia G. 2003. Descrizione di nuove specie di *Athous* Eschscholtz del sottogenere *Orthathous* Reitter della Turchia (Coleoptera, Elateridae). *Lambillionea* 103(2): 263–268.

Platia G. 2004. Descrizione di nuovi Elateridi della regione Palearctica con note geonemiche e sinonimiche (Coleoptera, Elateridae). *Lambillionea* 104(1): 98–108.

Platia G. 2008. New species and chronological data of click-beetles from Western and Southern Palearctic region (Coleoptera, Elateridae). *Biocosme Méditerranéenne* 25(4): 137–150.

Platia G. 2010a. Descriptions of fourteen new species of click beetles from the palearctic region, with chronological notes (Insecta Coleoptera Elateridae). *Quaderno di Studi e Notizie di Storia Naturale della Romagna* 30: 103–130.

- Platia G. 2010b. New species and chronological notes of click beetles from the Palearctic region, especially from the Middle East (Coleoptera, Elateridae). *Boletín de la Sociedad Entomológica Aragonesa* 46: 23–49.
- Platia G. 2011a. New species and new records of click beetles from the palearctic region (Coleoptera, Elateridae). *Boletín de la Sociedad Entomológica Aragonesa* 48: 47–60.
- Platia G. 2011b. Description of three new species of click beetles from the Palearctic region, with new distributional records (Coleoptera, Elateridae). *Boletín de la Sociedad Entomológica Aragonesa* 49: 19–22.
- Platia G. 2012. Description of ten new species of click beetles from the Palearctic region with new distributional records (Coleoptera, Elateridae). *Boletín de la Sociedad Entomológica Aragonesa* 50: 199–207.
- Platia G, Gudenzi I. 1996. Descrizione di tre nuove specie di *Athous* Eschscholtz del sottogenere *Orthathous* Reitter della Turchia con chiave di determinazione dei maschi delle specie note (Coleoptera, Elateridae). *Lambillionea* 96(1): 235–241.
- Platia G, Gudenzi I. 1998. Descrizione di nuovi Elateridi di Grecia e Turchia con note e chiave di determinazione per gli *Agriotes* del gruppo *gurgistanus* Faldermann (Coleoptera, Elateridae). *Lambillionea* 98(4): 629–640.
- Platia G, Gudenzi I. 1999. Descrizione di nuove specie di Elateridi della regione paleartica con note geonemiche e sinonimiche (Insecta Coleoptera Elateridae). *Quaderno di Studi e Notizie di Naturalle della Romagna* 11: 17–31.
- Platia G, Gudenzi I. 2000a. Descrizione di un nuovo genere e tredici nuove specie di Elateridi della regione paleartica con note geonemiche (Insecta Coleoptera Elateridae). *Quaderno di Studi e Notizie di Naturalle della Romagna* 13: 65–83.
- Platia G, Gudenzi I. 2000b. Revisione dei *Cardiophorus* Eschscholtz della Turchia. I: Le specie bicolori. (Coleoptera, Elateridae, Cardiophorinae). *Lambillionea* 100: 601–612.
- Platia G, Gudenzi I. 2002. Descrizione di venti nuove specie di Elateridi della regione Palearctica (Insecta Coleoptera Elateridae). *Quaderno di Studi e Notizie di Storia Naturalle della Romagna* 16: 73–98.
- Platia G, Gudenzi I. 2004. Contributo alla conoscenza dei *Dicronychus* Brullé, 1832 della Turcia con descrizione di nuove specie e chiave di determinazione per le specie note (Coleoptera: Elateridae: Cardiophorini). *Boletín De La Sociedad Entomologica Aragonesa* 34: 9–22.
- Platia G, Gudenzi I. 2007. Click-beetles species and records new to the palearctic region (Insecta Coleoptera Elateridae). *Quaderno di Studi e Notizie di Naturalle della Romagna* 24: 79–86.
- Platia G, Gudenzi I. 2009. Descriptions of new species of click beetles from the palearctic region, with chronological notes (Insecta Coleoptera Elateridae). *Quaderno di Studi e Notizie di Naturalle della Romagna* 28: 111–131.
- Platia G, Jansson N, Avci M, Sarikaya O, Coskun M, Kayis T. 2011. New species of click beetles from Turkey (Coleoptera, Elateridae). *Boletín de la Sociedad Entomológica Aragonesa*, 48: 207–215.

Platia G, Nemeth T. 2011. On some Palaearctic click beetles in the Hungarian Natural History Museum (Coleoptera: Elateridae). *Annales Historico-Naturales Musei Nationalis Hungarici* 103: 1–41.

Platia G, Schimmel R. 1991. Descrizione di nuove specie di Elateridi di Grecia e Turchia con chiave per due gruppi di specie (Coleoptera, Elateridae). *Lavori Società Veneziana di Scienze Naturali*. 16: 131–142.

Platia G, Schimmel R, Tarnawski D. 2009. Description of two new species of *Agriotes* Eschscholtz of the *Agriotes nuceus*-group from Turkey with chronological notes (Insecta: Coleoptera: Elateridae). *Genus* 20(2): 243–248.

Schimmel R. 1990. Neue Schnellkäfer, sowie Bemerkungen über bekannte Arten dieser Familie aus der Türkei, aus Spanien und aus Deutschland (Coleoptera, Elateridae). *Entomologische Blätter für Biologie und Systematik der Käfer* 86(1–2): 71–84.

Schimmel R, Platia G, Tarnawski D. 2009. Two new species of the genus *Mulsanteus* Gozis, 1875 from Turkey (Insecta: Coleoptera: Elateridae). *Genus* 20(2): 249–255.

Sert O, Kabalak M. 2011. Faunistic, Ecological and Zoogeographical Evaluations on the Click-Beetles (Coleoptera: Elateridae) of Middle Part of the Black Sea Region of Turkey. *Annales de la Société entomologique de France* 47(3–4): 501–509.

Yüksel H. 1970. *Türkiye'de bulunan telkurtları (Elateridae) türleri üzerinde sistematik çalışmalar*. Atatürk Üniversitesi Basımevi.

Table 1. Number of specimens, the collection/habitat method, and the distributions of species. **Collecting habitat-method:** **Fhp-In:** Forest ground herbaceous plants-Insect net, **Hps-In:** Herbaceous plants near streams-Insect net, **Hpfr-In:** Herbaceous plants near fields and roads-Insect net, **Tb-Ju:** Trees and bushes-Japanese Umbrella, **Dt-As:** Decaying trees-Aspirator, **Uss-As:** Under stones and detritus near stream-Aspirator, **Usp-As:** Under stones and plants-Aspirator. **Vertical distribution** (m a.s.l.): **A:** 0–250m, **B:** 251–500, **C:** 501–750, **D:** 751–1000, **E:** 1001–1250, **F:** 1251–1500, **G:** 1501–1750m. **Collecting months:** **May:** May, **Jun:** June, **Jul:** July, **Aug:** August, **Oct:** October. **Distributions in Turkey:** **1:** Western Black Sea Region, **2:** Middle Black Sea Region, **3:** Eastern Black Sea Region, **4:** Central Anatolian Region, **5:** Marmara Region, **6:** Eastern Anatolian Region, **7:** South Eastern Anatolian Region, **8:** Aegean Region, **9:** Mediterranean Region (Dušánek and Mertlik 2007; Guglielmi and Platia 1985; Gülpérçin and Tezcan 2009 and 2010; Kabalak 2010; Kabalak and Sert 2005, 2006, 2011a, 2011b; Kesdek et al. 2006; Lohse 1979; Mertlik 2000; Mertlik and Dušánek 2006; Mertlik and Platia 2008; Platia 1989, 2003; Platia and Gudenzi 1996, 1998, 2000a, 2000b, 2002, 2004; Platia and Schimmel 1991; Schimmel 1990; Sert and Kabalak 2011; Yüksel 1970); **Zoogeographical Distributions:** **AUST:** Australian, **ETR:** Endemic for Turkey, **EWP:** European part of western Palaearctic, **FE:** Far East, **HO:** Holarctic, **MA:** Middle Asia, **ME:** Middle East, **NA:** North Africa, **NEA:** Nearctic, **NTR:** Neotropic, **PA:** Palearctic, **SB:** Siberia (Cate 2007; Mertlik and Platia 2008; Penev and Alekseev 1996; Platia 1994).

Species	Number of Specimens	Collecting Habitat-Method	Vertical Distribution	Collecting Month	Distribution in Turkey	Zoogeographical Distribution
<i>Adrastus anatolicus</i> Platia & Schimmel, 1991	16	Hps-In	A, D	Jun, Jul	2, 3, 4, 6, 8, 9	ETR
<i>Adrastus circassicus</i> Reitter, 1896	17	Fhp-In, Tb-Ju	C	Jun	2, 4	EWP
<i>Adrastus montanus</i> (Scopoli, 1763)	1	Hpfr-In	A	Jun	1, 2, 4, 5, 8	EWP
<i>Agriotes acuminatus</i> (Stephens, 1830)	5	Fhp-In	D, E, G	Jun	1, 2	EWP
<i>Agriotes infuscatus</i> Desbrochers des Loges, 1870	39	Hps-In, Hpfr-In, Fhp-In	C, D, E, F	May, Jun	2, 4, 5	EWP, ME
<i>Agriotes paludum</i> Kiesenwetter, 1859	5		A, B, D	May, Jun, Jul	2, 4, 5, 6, 8	EWP, ME
<i>Agriotes proximus</i> Schwarz, 1891	20	Hps-In	A, B, C, D, E, F, G	May, Jun, Jul	1, 2, 4, 5, 6	EWP, ME, NA
<i>Agriotes sputator</i> (Linnaeus, 1758)	10	Fhp-In, Hps-In	A; B, D, E, F	May, Jun, Jul	1, 2, 4, 5, 6, 7, 8, 9	HO
<i>Agriotes ustulatus</i> (Schaller, 1783)	2	Fhp-In	C	Jun	1, 6	EWP, ME, NA, NTR
<i>Agrypnus crenicollis</i> (Ménétriés, 1832)	1	Uss-As	E	Jun	3, 4, 6	EWP, ME
<i>Ampedus (Ampedus) anatolicus</i> Platia & Gudenzi, 2002	2	Dt-As	E	May	1	ETR
<i>Ampedus (A.) cinnaberinus</i> (Eschscholtz, 1829)	3	Dt-As	D, E	May	2, 3, 4, 6	EWP, FE, SB, MA, ME
<i>Ampedus (A.) elegantulus</i> (Schönher, 1817)	1	Dt-As	A	May	2, 4, 8	EWP, ME
<i>Ampedus (A.) platiai</i> Schimmel, 1990	2	Dt-As	E	May	2, 4, 9	ETR
<i>Ampedus (A.) pomorum</i> (Herbst in Füssly, 1784)	1	Dt-As	D	May	1, 2, 4	EWP, SB, FE, MA
<i>Ampedus (A.) praeustus</i> (Fabricius, 1792)	14	Dt-As	F	May	2	EWP, SB, MA
<i>Ampedus (A.) rufipennis</i> (Stephens, 1830)	1	Dt-As	D	May	5, 8, 9	EWP, ME, NA
<i>Athous (Athous) haemorrhoidalis</i> (Fabricius, 1801)	1	Hps-In	D	May	2, 4, 6, 8	EWP, MA, ME
<i>Athous (Haplathous) marginicollis</i> Reitter, 1890	1	Fhp-In	F	Jun	1, 2	EWP
<i>Athous (H.) subfuscus</i> (O.F. Müller, 1764)	8	Fhp-In	F	Jun	1, 2, 3, 4	EWP, ME
<i>Athous (Orthathous) daccordii</i> Guglielmi & Platia, 1985	1	Hps-In	D	Jun	3	ETR
<i>Athous (O.) paglagonensis</i> Platia & Gudenzi, 1998	10	Fhp-In, Hpfr-In	B	Jul	1	ETR
<i>Athous (O.) warchalowskii</i> Platia & Tarnawski, 1998	18	Fhp-In, Hpfr-In	A, B, F	May, Jun, Jul	5	ETR
<i>Cardiophorus (Cardiophorus) anticus</i> Erichson, 1840	1	Fhp-In	D	May	4, 9	EWP, ME
<i>Cardiophorus (C.) dolini</i> Mardjanian, 1985	2	Fhp-In, Hpfr-In	B, D	Jun, Jul	2, 4, 5, 6, 8, 9	EWP
<i>Cardiophorus (C.) vestigialis</i> Erichson, 1840	1	Hpfr-In	E	Jun	2, 3, 4, 6, 8, 9	PA
<i>Dalopius marginatus</i> (Linnaeus, 1758)	4	Fhp-In	D, F	Jun	4	EWP, MA, SB
<i>Denticollis parallellicollis</i> Aubé, 1850	1	Fhp-In	F	Jun	3, 5, 7	EWP
<i>Dicronychus cinereus</i> (Herbst, 1784)	1	Hps-In	D	Jun	2, 3, 4, 6, 8, 9	EWP, MA, ME
<i>Dicronychus obscuripennis</i> (Pic, 1899)	2	Fhp-In	A, E	May	4, 5, 8, 9	EWP
<i>Dicronychus senaci</i> Desbrochers des Loges, 1870	20	Fhp-In	D, F, G	Jun	1, 3, 4, 5, 6, 8	EWP, MA, SB
<i>Drasterius bimaculatus</i> (Rossi, 1790)	8	Uss-As	C, D, E	May, Jun	1, 2, 3, 4, 5, 6, 7, 8, 9	EWP, MA, ME, NA
<i>Lacon punctatus</i> (Herbst, 1779)	1	Fhp-In	C	Jun	2, 3, 4, 5, 8, 9	EWP, ME, NA
<i>Limonium minutus</i> (Linnaeus, 1758)	9	Fhp-In	E, F, G	Jun	2, 4	EWP, MA, ME
<i>Nothodes parvulus</i> (Panzer, 1799)	1	Hpfr-In	D	May	2, 4, 5, 6, 8	EWP, ME
<i>Peripontius terminatus</i> (Erichson, 1842)	1	Hps-In	A	Jul	2, 4, 8, 9	EWP, ME, NA
<i>Prosternon tessellatum</i> (Linnaeus, 1758)	3	Fhp-In, Hpfr-In	D, F	Jun	3, 4, 5, 6	EWP, MA, SB
<i>Pseudocrepidophorus flavescens</i> (Eschscholtz, 1818)	1	Fhp-In	C	Jun	2, 3	EWP, ME
<i>Quasimus minutissimus</i> (Germar, 1817)	295	Hps-In, Tb-Ju	A, B, C, D, E, F	May, Jun	1, 2, 3, 4, 8	EWP, ME, SB
<i>Synaptus filiformis</i> (Fabricius, 1781)	4	Hps-In	A, D, F	May, Jun	1, 2, 3, 4, 5, 6, 8, 9	EWP, MA, ME
<i>Zoroachros alysidotus</i> (Kiesenwetter, 1858)	17	Uss-As	A	May	2, 4, 6, 8	EWP, ME
<i>Zoroachros meridionalis</i> (Laporte de Castelnau, 1840)	39	Uss-As	A, B, C, E	May, Jun	3, 4, 5, 9	EWP
<i>Zoroachros pilosellus</i> (Reitter, 1895)	16	Uss-As	C	Jun	4	EWP, MA, ME
<i>Zoroachros stibicki</i> (Leseigneur, 1970)	8	Uss-As	A, F	May, Jun	2, 4	EWP

Table 2. Months of collection and distribution of species within the research area as reported in the literature. **May:** May, **Jun:** June, **Jul:** July, **Aug:** August, **Oct:** October. **Distribution in Turkey:** **1:** Western Black Sea Region, **2:** Middle Black Sea Region, **3:** Eastern Black Sea Region, **4:** Central Anatolian Region, **5:** Marmara Region, **6:** Eastern Anatolian Region, **7:** South Eastern Anatolian Region, **8:** Aegean Region, **9:** Mediterranean Region (Dušanek and Mertlik 2007; Guglielmi and Platia 1985; Gülpertçin and Tezcan 2009 and 2010; Kabalak 2010; Kabalak and Sert 2005, 2006, 2011a, 2011b; Kesdek et al. 2006; Lohse 1979; Mertlik 2000; Mertlik and Dušanek 2006; Mertlik and Platia 2008; Platia 1989, 2003; Platia and Gudenzi 1996, 1998, 2000a, 2000b, 2002, 2004; Platia and Schimmel 1991; Schimmel 1990; Sert and Kabalak 2011; Yüksel 1970); **Zoogeographical Distribution:** **AUST:** Australian, **ETR:** Endemic for Turkey, **EWP:** European part of the western Palaearctic, **FE:** Far East, **HO:** Holarctic, **MA:** Middle Asia, **ME:** Middle East, **NA:** North Africa, **NEA:** Nearctic, **NTR:** Neotropic, **PA:** Palearctic, **SB:** Siberia (Cate 2007; Mertlik and Platia 2008; Penev and Alekseev 1996; Platia 1994). An asterisk (*) indicates a species that was reported in the literature and also collected by authors.

Species	Literature	Collecting province	Collecting month	Distribution in Turkey	Zoogeographical distribution
<i>Agrypnus murinus</i> (Linnaeus, 1758)	Guglielmi and Platia 1985	Bolu	May, Jun, Jul	1	HO
<i>Adrastus limbatus</i> (Fabricius, 1776)	Guglielmi and Platia 1985	Bolu	Jul	1, 3, 8	EWP
<i>A. protractus</i> Roubal, 1924	Guglielmi and Platia 1985	Bolu	Jun, Jul	1, 3	EWP
<i>A. rachifer</i> (Fourcroy, 1785)	Guglielmi and Platia 1985	Düzce, Kastamonu	Jul	1, 2, 4, 6, 8	EWP
* <i>Agriotes acuminatus</i> (Stephens, 1830)	Guglielmi and Platia 1985	Bolu	Jun, Jul	Given in Table 1	Given in Table 1
<i>A. lineatus</i> (Linnaeus, 1767)	Guglielmi and Platia 1985	Bolu, Kastamonu	Jul	1, 2, 3, 4, 5, 6, 8, 9	AUST, EWP, MA, ME, NEA, NTR, SB
* <i>A. proximus</i> Schwarz, 1891	Guglielmi and Platia 1985	Kastamonu, Bolu	June, Jul	Given in Table 1	Given in Table 1
* <i>A. sputator</i> (Linnaeus, 1758)	Guglielmi and Platia 1985	Bolu, Kastamonu	May, Jun, Jul	Given in Table 1	Given in Table 1
<i>A. tauricus</i> Heyden, 1882	Guglielmi and Platia 1985	Bolu	Jun	1	EWP
* <i>A. ustulatus</i> (Schaller, 1783)	Guglielmi and Platia 1985	Düzce	Jul	Given in Table 1	Given in Table 1
<i>Ampedus elongatulus</i> (Fabricius, 1787)	Platia and Gudenzi 2000b	Düzce	Jun	1, 8	EWP
<i>A. wachtangi</i> Dolin, 1970	Guglielmi and Platia 1985, Platia and Gudenzi 1999	Bolu, Kastamonu	Jul, Oct	1, 3	EWP, MA, SB
<i>Athous</i> (<i>Athous</i>) <i>vittatus</i> (Fabricius, 1792)	Guglielmi and Platia 1985	Kastamonu	May	1, 2, 3, 6, 8	EWP
* <i>A. (Haplathous) marginicollis</i> Reitter, 1890	Guglielmi and Platia 1985	Kastamonu	Jul	Given in Table 1	Given in Table 1
* <i>A. (H.) subfuscus</i> (O.F. Müller, 1764)	Guglielmi and Platia 1985	Kastamonu	May, Jul	Given in Table 1	Given in Table 1
<i>A. (Orthathous) lassallei</i> Platia & Gudenzi, 1996	Platia and Gudenzi 1996; Platia 2003	Zonguldak Kastamonu	Jun	1	ETR
<i>A. (O.) mertliki</i> Platia & Gudenzi, 2002	Platia and Gudenzi 2002	Karabük (as Zonguldak in lit.)	Jun	1	ETR
* <i>A. (O.) paflagonensis</i> Platia & Gudenzi, 1998	Platia and Gudenzi 1998	Karabük (as Zonguldak in lit.)	May	Given in Table 1	Given in Table 1
<i>A. (O.) sabatinellii</i> Guglielmi & Platia, 1985	Guglielmi and Platia 1985	Düzce	Jul	1, 5	ETR
<i>A. (O.) sameki</i> Platia, 2003	Platia 2003	Kastamonu Zonguldak	Jun	1	ETR
<i>A. (O.) snizeki</i> Platia, 2004	Platia 2004	Bolu	Jul	1	ETR
<i>A. (O.) svihlai</i> Platia & Gudenzi, 1998	Platia and Gudenzi 1998, 2007	Karabük (as Zonguldak in lit.)	Jun	1	ETR
<i>A. (O.) tribertii</i> Guglielmi & Platia, 1985	Guglielmi and Platia 1985	Bolu	Jun, Jul	1, 6	ETR
<i>A. (O.) wewalkai</i> Platia, 1989	Platia 1989	Bolu	Aug	1, 5	ETR
<i>A. (O.) zanettii</i> Guglielmi & Platia, 1985	Guglielmi and Platia 1985	Kastamonu	Jul	1	ETR
<i>A. (O.) zbuzeki</i> Platia & Gudenzi, 2007	Platia and Gudenzi 2007	Kastamonu	Jul	1	ETR
<i>Brachygonus megerlei</i> (Lacordaire, 1835)	Mertlik and Dusanek 2006	Karabük (as Zonguldak in lit.)	Jun	1	EWP
<i>Cardiophorus discicollis</i> (Herbst, 1806)	Platia and Gudenzi 2000b	İlgaz	May	1, 4, 8, 9	EWP, MA, ME
<i>Cidnopus pilosus</i> (Leske, 1785)	Guglielmi and Platia 1985	Bolu	Jun	1	EWP, MA
<i>C. schurmanni</i> Platia and Gudenzi, 1998	Mertlik and Dusanek 2006	Bolu	Jun	1	EWP, MA
<i>Dicronychus iconiensis</i> (Pic, 1908)	Guglielmi and Platia 1985, Platia and Gudenzi 2004	Bolu	Jun	1, 4, 6, 7	ETR
* <i>D. obscuripennis</i> (Pic, 1899)	Platia and Gudenzi 2004	Bolu	May, Jun	Given in Table 1	Given in Table 1
* <i>D. senaci</i> Desbrochers des Loges, 1870	Platia and Gudenzi 2004	Karabük	May	Given in Table 1	Given in Table 1
* <i>Drasterius bimaculatu</i> (Rossi, 1790)	Guglielmi and Platia 1985	Düzce, Kastamonu	Jul	Given in Table 1	Given in Table 1
<i>Melanotus bajulus</i> (Erichson, 1841)	Kabalak and Sert 2006	Karabük	Jun	1, 4, 9	ME
<i>Melanotus villosus</i> (Fourcroy, 1785)	Guglielmi and Platia 1985	Bolu	Oct	1, 2, 3, 4, 6, 8, 9	EWP, MA, ME, NA
* <i>Quasimus minutissimus</i> (Germar, 1877)	Guglielmi and Platia 1985	Düzce	Jul	Given in Table 1	Given in Table 1
<i>Selatosomus</i> (<i>S.</i>) <i>latus</i> (Fabricius, 1801)	Mertlik 2000	Bolu	Jun	1, 3, 4, 5, 6, 9	EWP, MA, ME, SB, FE
* <i>Synaptus filiformis</i> (Fabricius, 1781)	Guglielmi and Platia 1985	Kastamonu	May, Jul	Given in Table 1	Given in Table 1
<i>Zorochros dermestoides</i> (Herbst, 1806)	Mertlik and Platia 2008	Bolu, Kastamonu	Jun	1, 4, 6	EWP, NA

Table 3. Comparison of the number of species in each genus of Elateridae between the Western Black Sea region and other regions of Turkey.

Genus	# of Species in the Western Black Sea region	# of Species in Turkey*
<i>Athous</i>	17	54
<i>Ampedus</i>	9	39
<i>Agriotes</i>	8	84
<i>Adrastus</i>	6	10
<i>Zorochros</i>	5	15
<i>Dicronychus</i>	4	25
<i>Cardiophorus</i>	4	71
<i>Melanotus</i>	2	22
<i>Cidnopus</i>	2	4
<i>Agrypnus</i>	2	3
<i>Synaptus</i>	1	1
<i>Selatosomus</i>	1	17
<i>Quasimus</i>	1	1
<i>Pseudocrepidophorus</i>	1	2
<i>Prosternon</i>	1	2
<i>Peripontius</i>	1	11
<i>Nothodes</i>	1	1
<i>Limonius</i>	1	3
<i>Lacon</i>	1	10
<i>Drasterius</i>	1	1
<i>Denticollis</i>	1	3
<i>Dalopius</i>	1	2
<i>Brachygonus</i>	1	7

*These data were obtained from Mertlik and Platia 2008; Kabalak and Sert 2009, 2010a, 2010b, 2011, 2012; Platia and Gudenzi 2009; Platia and Nemeth 2011; Platia et al. 2009; Platia et al. 2011; Schimmel et al. 2009; Platia 2008, 2010a, 2010b, 2011a, 2011b, 2012; Sert and Kabalak 2011; Kabalak et al. 2013.