

**Phylogeographic Variation in Two Mustelines, the Least Weasel *Mustela nivalis* and the Ermine *M. erminea* of Japan, Based on Mitochondrial DNA Control Region Sequences**

Authors: Naoko Kurose, Ryuichi Masuda, and Michihiro C. Yoshida

Source: Zoological Science, 16(6) : 971-977

Published By: Zoological Society of Japan

URL: <https://doi.org/10.2108/zsj.16.971>

---

BioOne Complete ([complete.BioOne.org](http://complete.BioOne.org)) is a full-text database of 200 subscribed and open-access titles in the biological, ecological, and environmental sciences published by nonprofit societies, associations, museums, institutions, and presses.

Your use of this PDF, the BioOne Complete website, and all posted and associated content indicates your acceptance of BioOne's Terms of Use, available at [www.bioone.org/terms-of-use](http://www.bioone.org/terms-of-use).

Usage of BioOne Complete content is strictly limited to personal, educational, and non-commercial use. Commercial inquiries or rights and permissions requests should be directed to the individual publisher as copyright holder.

---

BioOne sees sustainable scholarly publishing as an inherently collaborative enterprise connecting authors, nonprofit publishers, academic institutions, research libraries, and research funders in the common goal of maximizing access to critical research.

# Phylogeographic Variation in Two Mustelines, the Least Weasel *Mustela nivalis* and the Ermine *M. erminea* of Japan, Based on Mitochondrial DNA Control Region Sequences

Naoko Kurose<sup>1</sup>, Ryuichi Masuda<sup>1,2\*</sup> and Michihiro C. Yoshida<sup>1,2</sup>

<sup>1</sup>*Cytogenetics Laboratory, Division of Bioscience, Graduate School of Environmental Earth Science, Hokkaido University, Sapporo 060-0810, Japan and*

<sup>2</sup>*Chromosome Research Unit, Faculty of Science, Hokkaido University, Sapporo 060-0810, Japan*

---

**ABSTRACT**—The least weasel *Mustela nivalis* and the ermine *M. erminea* of Japan are considered relicts of the last glacial period. To study phylogeographic variation in these mustelines, fragments of the mitochondrial DNA control region were sequenced. In both species, the control region included tandem repeats of 10-base motifs at the 3' portion specific to the genus *Mustela*. Phylogenetic trees of the 5' portion (581–584 bases) of *M. nivalis* indicated that haplotypes in the Hokkaido population clearly diverged from those in the Honshu population. Geographic pattern of intraspecific variations illustrated by this result is concordant with that by the result of a previous cytogenetic study, which revealed the karyotypic differentiation between the two populations. These findings might suggest that the Hokkaido and Honshu populations of *M. nivalis* were geographically isolated in advance of the formation of the Tsugaru strait between Hokkaido and Honshu. Distribution pattern of the mitochondrial DNA haplotypes within Hokkaido suggests that *M. nivalis* experienced the repeated changes of environments during glacial and inter-glacial periods of the Quaternary, or that this species immigrated from Sakhalin/Siberia into Hokkaido so recently. On the other hand, *M. erminea* exhibited a smaller sequence divergence between the Hokkaido and Honshu populations, suggesting a shorter geographic isolation than in *M. nivalis*.

---

## INTRODUCTION

The least weasel *Mustela nivalis* is the smallest species among the genus, distributed only in cold regions such as northern Eurasia, northwestern Africa, and North America (Nowak, 1991). In Japan, distribution of *M. nivalis* is restricted to Hokkaido (the northernmost island of Japan) and some higher mountains in the northern part of Honshu (Kawamichi, 1996)(see Fig. 1). It is hypothesized that the Tsugaru strait between Hokkaido and Honshu was formed around 0.1–0.15 million years (My) ago, whereas the Soya strait, isolating Hokkaido from Sakhalin/Siberia, was completed much more recently, around 12,000 years ago (Ohshima, 1991). It is likely that *M. nivalis* immigrated from the continent into the Japanese islands through land bridges, and then was isolated there by straits. A fossil of *M. nivalis* was reported from the Quaternary remains of Gifu Prefecture (Kawamura *et al.*, 1989) (see Fig. 1), which is located far south of the current range of the species. Therefore, *M. nivalis* is considered one of relicts of the last glacial period in Japan (Iziri, 1979).

Obara (1991) reported the occurrence of Robertsonian

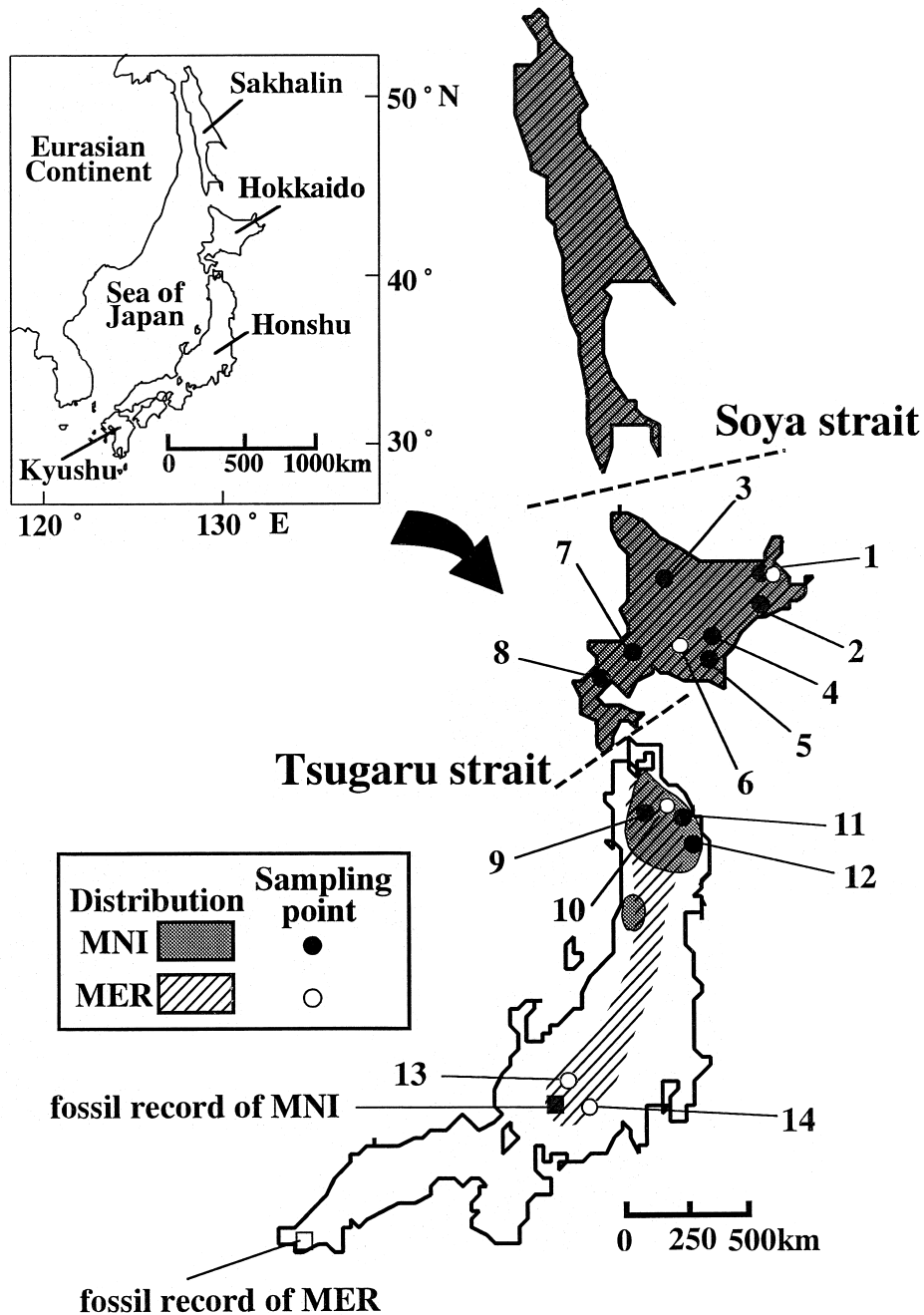
chromosomal divergence between populations of *M. nivalis* from Hokkaido ( $2n=42$ ) and northern Honshu ( $2n=38$ ). On the other hand, the Siberian continent population has a  $2n=42$  karyotype, apparently identical with that of the Hokkaido population (Mandahl and Fredga, 1980). A previous study (Masuda and Yoshida, 1994a) reported the mitochondrial DNA (mtDNA) cytochrome *b* sequence divergence between the Hokkaido and Honshu populations, which was parallel to intraspecific difference of other mustelid species. These karyotypic and mtDNA differentiation could have been fixed to the Honshu population after its geographic isolation.

The ermine *Mustela erminea* is considered another musteline adapted to cold regions of the Northern Hemisphere (Iziri, 1979; Nowak, 1991). In Japan, this species is distributed in Hokkaido and high altitude areas of the northern and central Honshu (Kawamichi, 1996)(Fig. 1). Fossils of *M. erminea* were found from the Quaternary remains in the more western areas, i.e., Yamaguchi Prefecture of western Honshu (Kawamura *et al.*, 1989) (see Fig. 1) and northern Kyushu (Nakagawa *et al.*, 1997).

Their common distribution pattern in cold regions of Japan suggests that these two species have the similar migration history to each other and adapted themselves to the cold environment. Among all mustelid species of Japan,

---

\* Corresponding author: Tel. +81-11-706-3541;  
FAX. +81-11-736-6304.



**Fig. 1.** Sampling localities of the least weasels *Mustela nivalis* (MNI) and the ermines *M. erminea* (MER). Locality numbers on the Japanese islands correspond to those in Table 1. Distribution areas of the two species (dots and slashes, respectively) are derived from those in Kawamichi (1996). Fossil records of these species were shown by squares.

only *M. nivalis* and *M. erminea* share some characteristics such as changing of the coat color from dark to white in the winter.

In this paper, we present geographic sequence variations in the mtDNA control regions of these two mustelines in Japan and discuss their bearings on the migration history.

## MATERIALS AND METHODS

### Animals and DNA extraction

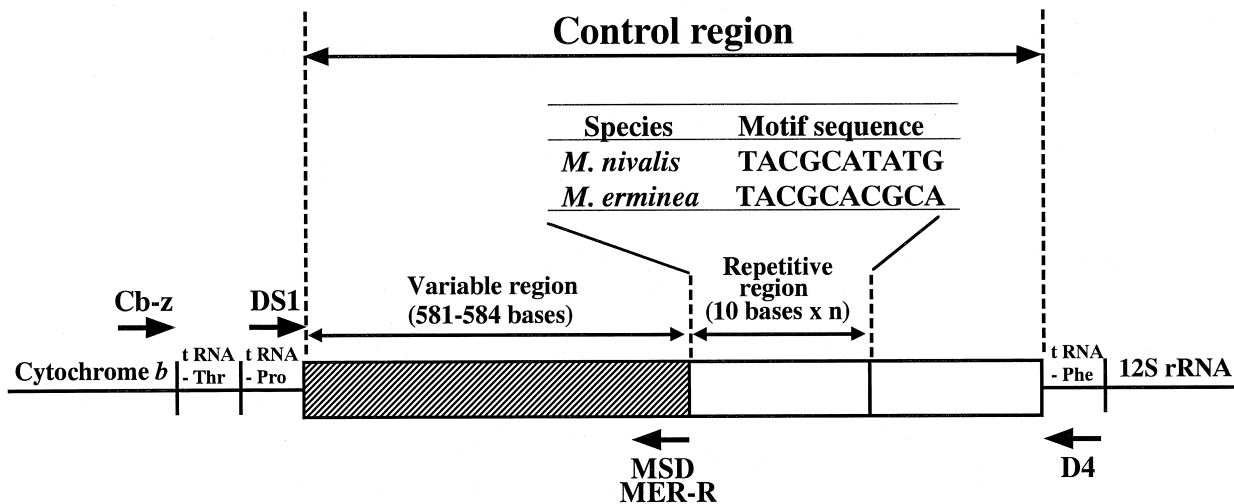
Animals examined in the present study and their localities were described in Table 1 and Fig. 1, respectively. Muscle tissues from animals were frozen at  $-80^{\circ}\text{C}$  or preserved in 70% ethanol until use. Total DNAs were extracted according to the phenol/proteinase K/sodium dodecyl sulfate (SDS) method of Sambrook *et al.* (1989) with some modifications (Masuda and Yoshida, 1994b). A small piece (approximately  $1\times 1\times 1$  mm) of tissue was excised with a scalpel and washed once with 500  $\mu\text{l}$  STE buffer (0.1M NaCl/10 mM Tris/1 mM

**Table 1.** Profiles of the least weasels *Mustela nivalis* (MNI) and the ermines *M. erminea* (MER) examined in this study<sup>1)</sup>

Species	Sample name	Sex	Sampling locality/supplier	Locality No. <sup>2)</sup>	Accession Number or sequence identity
<i>Mustela nivalis</i>	MNI-AK11		Kazuno-shi, Akita/M. Hisasue	9	AB006728
	MNI-IWA1		Kunohe-gun, Iwate/F. Sekiyama	11	same as MNI-AK11
	MNI-IWA2		Iwaizumi-cho, Iwate/F. Sekiyama	12	same as MNI-AK11
	MNI-S12		Shari-cho/Y. Masuda	1	AB006720
	MNI-S13		Shari-cho/Y. Masuda	1	AB006721
	MNI-S14		Shari-cho/Y. Masuda	1	same as MNI-S13
	MNI-5		Horokanai-cho/H. Abe	3	AB006717
	MNI-YOT1		Mt. Youtei/M. Takahashi	8	AB006719
	MNI-OB1		Makubetu-cho/H. Yanagawa	5	AB006718
	MNI-OB2		Shihoro-cho/H. Yanagawa	4	same as MNI-S13
	MNI-HIT1		Sapporo-shi/T. Saito	7	AB006722
	MNI-HIT2		Sapporo-shi/T. Saito	7	AB006723
	MNI-N26		Unknown/T. Saito	–	AB006724
	MNI-N27		Sapporo-shi/T. Saito	7	AB006725
	MNI-N28		Sapporo-shi/T. Saito	7	same as MNI-N27
	MNI-N29		Sapporo-shi/T. Saito	7	same as MNI-N27
	MNI-N30		Sapporo-shi/T. Saito	7	AB006726
	MNI-N31		Sapporo-shi/T. Saito	7	same as MNI-YOT1
	MNI-N32		Shibecha-cho/T. Saito	2	AB006727
	MNI-N33		Sapporo-shi/T. Saito	7	same as MNI-N30
	MNI-N34		Sapporo-shi/T. Saito	7	same as MNI-HIT1
	MNI-N35		Shibecha-cho/T. Saito	2	same as MNI-N32
	MNI-N37		Sapporo-shi/T. Saito	7	same as MNI-HIT1
<i>Mustela erminea</i>	MER-IWA1		Ninohe-gun, Iwate/F. Sekiyama	10	AB006732
	MER-YAM1		Fujimi-cho, Nagano/Y. Yamamoto	14	AB006729
	MER-TOG1		Togakushi-mura, Nagano/T. Tanabe	13	AB006733
	MER-1		Shari-cho/Y. Masuda	1	AB006730
	MER-CH1		Hidaka Mountains/H. Yanagawa	6	AB006731
<i>Mustela putorius furo</i>	MFU-1		Domestic	–	AB010379

<sup>1)</sup> All tissues used were muscle.

<sup>2)</sup> Locality numbers correspond to those in Fig. 1.



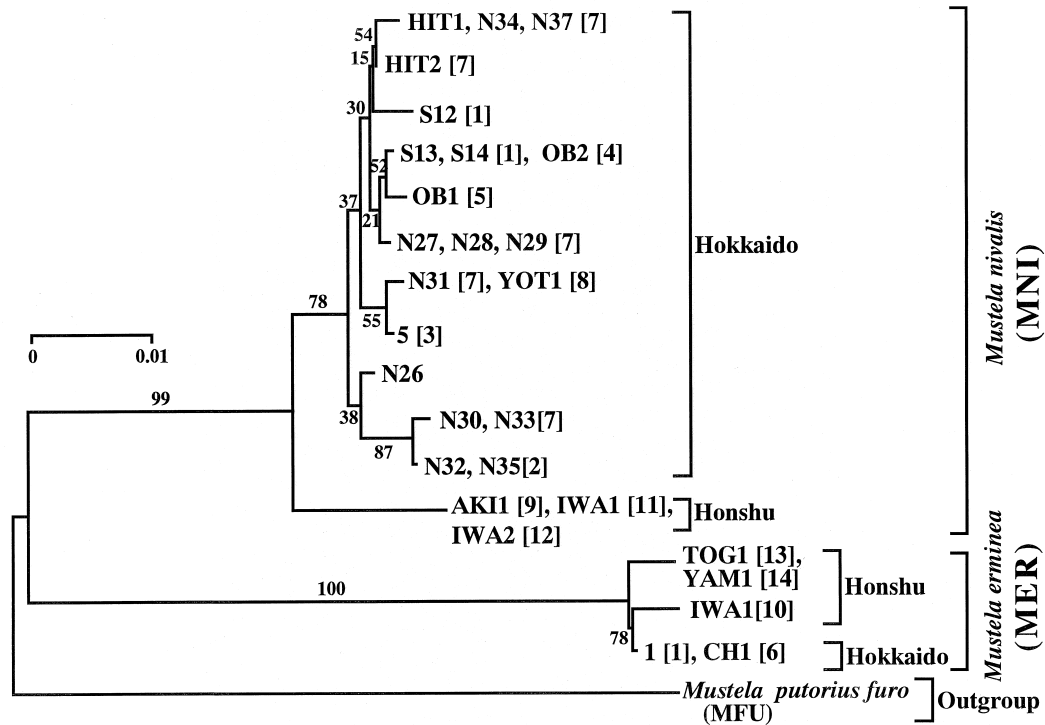
**Fig. 2.** Schematic diagram of the mitochondrial DNA control region of *Mustela nivalis* and *M. erminea*. Large arrows (Cb-Z, DS1, MSD, MER-R, and D4) show primers used for PCR amplification and/or sequencing. The variable region (slashed), which is more variable between individuals, was used for phylogenetic analysis.

EDTA). Using a small glass homogenizer, tissues were homogenized with 500  $\mu$ l STE buffer containing a final concentration of 0.5% SDS and 5  $\mu$ g/ml proteinase K. After incubation at 37°C overnight, the homogenate was extracted 2–3 times with an equal volume of phenol/chloroform/isoamyl alcohol (25:24:1) and once with chloroform/

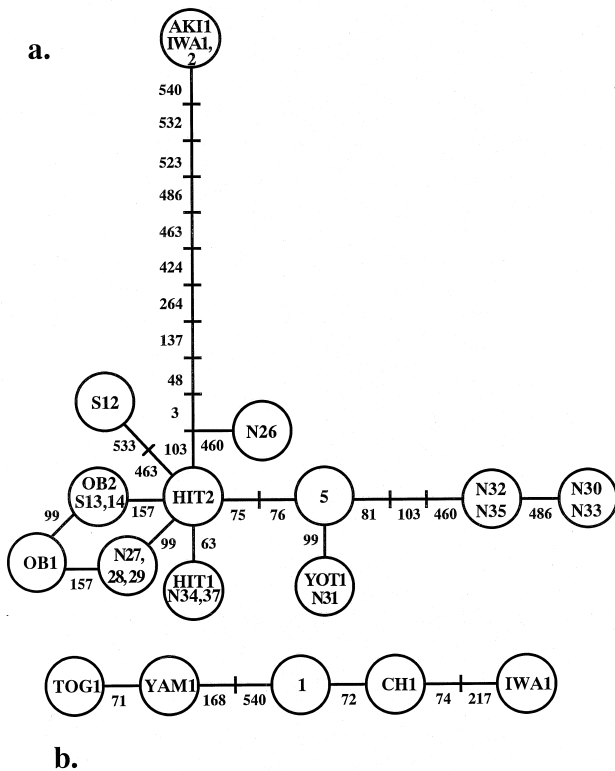
isoamyl alcohol (24:1). STE buffer extracted by the same procedure was used as a negative control in subsequent polymerase chain reaction (PCR) amplification.

After washing with 70% ethanol, hair roots of the ferret *Mustela putorius furo* as an outgroup were incubated in 5% Chelex-100 (Bio-





**Fig. 3.** A neighbor-joining tree reconstructed for *Mustela nivalis* (MNI), *M. erminea* (MER), and *M. putorius furo* (MFU, outgroup) on the basis of the 5' variable portion of the control region sequences (581-584 bases). The scale indicates genetic distance estimated with Kimura's (1980) two parameter method, eliminating indel sites. Numbers (%) on internal branches are bootstrap values derived from 1,000 replications. Sample names with locality numbers in brackets refer to those in Table 1.



**Fig. 4.** Hand-drawn parsimonious networks of haplotypes for *Mustela nivalis* (a) and *M. erminea* (b). One slash indicates a presumed sequence. One number above the line shows a site of nucleotide substitution.

1.91% to 2.43% (2.14% in average). From 20 individuals in the Hokkaido population, 11 haplotypes were identified. The neighbor-joining tree (Fig. 3) indicated that these 11 haplotypes formed one cluster with a 78% bootstrap value, while one common haplotype obtained from the Honshu population split basally from the cluster of the Hokkaido population. The parsimonious network (Fig. 4a) also exhibited a relatively large, discontinuous divergence between the Hokkaido and Honshu populations.

In Hokkaido, five of the 11 haplotypes were located at one sampling locality No. 7 (Sapporo) (Fig. 1). Meanwhile, some haplotypes were specific to restricted areas: for example, MNI-S13 (same as MNI-S14 and -OB2), -S12, -OB1, and -N32 (same as MNI-N35) were specific to eastern parts of Hokkaido. However, the phylogenetically closer haplotypes were not always located at geographically closer areas: for instance, one haplotype from Sapporo (MNI-N30 and -N33, locality No. 7 in Fig. 1) was closely related (87% bootstrap value) to that from Shibechea (MNI-N32 and -N35, locality No. 2 in Fig. 1), which is far away from Sapporo (Figs. 3 and 4a).

**Sequence variation in *M. erminea***

Five animals examined here had sequences different from each other (Table 2). Among 581 bases (excluding one indel), six sites were variable and all substitutions were transitions (Table 2). In the neighbor-joining tree (Fig. 3) eliminating the single indel site, only two lowest branches were expressed for three haplotypes of Honshu and one for two haplotypes of

Hokkaido because of the occurrence of additional indels between *M. erminea* and *M. putorius furo* as outgroup. Intraspecific sequence differences of *M. erminea* varied from 0.35% to 0.69%. Both the neighbor-joining tree (Fig. 3) and the parsimonious network (Fig. 4b) clearly showed the smaller genetic differentiation of *M. erminea* between Hokkaido and Honshu, compared with that of *M. nivalis*. Especially, the parsimonious network (Fig. 4b) demonstrated the linear relationships, showing the intermediate position of the two Hokkaido haplotypes (MER-1 and -CH1) between MER-IWA1 and the other Honshu haplotypes (MER-TOG1 and -YAM1).

## DISCUSSION

The present study revealed that *Mustela nivalis* and *M. erminea* share a repetitive sequence portion comprising 10-base motifs in the mtDNA control region (Fig. 2). In homologous regions of two other *Mustela* species, *M. itatsi* and *M. sibirica*, we identified the similar repetitive sequences (unpublished data). These findings suggest that such repetitive sequences commonly occur in the control region of the genus *Mustela*. Hoelzel *et al.* (1994) reported that other carnivores, such as the American mink *Mustela vison*, the domestic dog *Canis familiaris*, the lion *Panthera leo* and the brown bear *Ursus arctos*, also share similar heteroplasmic repetitive sequences in the control region. The repetitive sequences of the control region could have occurred prior to divergence of Carnivora. The difficulty in sequencing the whole repetitive region suggests the heteroplasmic situation in the cell and/or DNA replication slippage of PCR caused in this repeated region.

The 5' sequence adjoining to the repetitive region was more informative for phylogenetic analysis (Fig. 2). Interestingly, the genetic variation between the Hokkaido and Honshu populations was much larger in *M. nivalis* than in *M. erminea* (Figs. 3 and 4). Obara (1991) reported a karyotypic differentiation between the Hokkaido ( $2n=42$ ) and the Honshu populations ( $2n=38$ ) of *M. nivalis*. In addition, Masuda and Yoshida (1994a, b) reported that the difference of the mitochondrial cytochrome *b* sequence between these two populations of *M. nivalis* largely corresponds to those between different subspecies in other Japanese mustelids. The present results further confirm the occurrence of the Hokkaido-Honshu divergence in this species.

Vigilant *et al.* (1989) estimated the evolutionary rate of the homologous human control region as approximately 8.4% per My. With the application of this coefficient to our results, the divergence time between the Honshu and Hokkaido populations of *M. nivalis* could be estimated as around 0.3 My before present. The cytochrome *b* sequence difference (0.8%) between the two populations, reported by Masuda and Yoshida (1994a), also refers to about 0.3 My on the basis of the temporary rate of sequence divergence generally assumed for the mammalian cytochrome *b* (Mayer *et al.*, 1990). The two estimates are identical to each other. The Tsugaru strait, which currently separates Honshu from Hokkaido (see Fig. 1), is considered to have been formed around 0.15 My before

present (Ohshima, 1991). Thus, both the present results and the result of Masuda and Yoshida (1994a) suggest that the two populations of *M. nivalis* were isolated prior to formation of the Tsugaru strait.

Within the Hokkaido population of *M. nivalis*, 11 haplotypes were identified. Five of them were found at Sapporo (locality No. 7), and the others (except MNI-N26) were out of Sapporo (locality Nos. 1–5, and 8) (Tables 1, 2). Relative phylogenetic affinities between the haplotypes (Figs. 3 and 4a) did not correlate with geographic distances between sampling localities. Our investigation by the maximum likelihood method also did not show clear geographic structure (data not shown), yielding results similar to those by the neighbor-joining and parsimonious analyses in the present study. By contrast, Hokkaido populations of other mammals including the sika deer *Cervus nippon* (Nagata *et al.*, 1998) and the brown bear *Ursus arctos* (Matsushashi *et al.*, 1999) exhibited some clear phylogeographic pattern of mtDNA control region haplotypes. Such a haplotype distribution in the Hokkaido population of *M. nivalis* might be explained as follows. The Japanese islands experienced several glacial and inter-glacial periods in the Quaternary, and the Soya strait (see Fig. 1), isolating Hokkaido from Sakhalin and Siberia, was formed around 12,000 years ago (Ohshima, 1991). By the last glacial age, *M. nivalis* in Hokkaido could have suffered from substantial changes of environments such as temperature and vegetation, and consequently their distribution areas might have been reduced and expanded repeatedly. Such repetitious habitat changes could impede fixation of mtDNA haplotypes into particular local populations under the operation of bottleneck effects. Another explanation is that *M. nivalis* could have immigrated from the continent into Hokkaido so recently as to let the current Hokkaido population retain the genetic variation possessed by the original immigrant population. This might be applicable to the genetic diversity found in animals from Sapporo (locality No. 7). Based on our data of the control region, the divergence time among haplotypes identified within the Hokkaido population was estimated as less than 0.2 My.

By contrast, genetic distance between the Hokkaido and Honshu populations of *M. erminea* was parallel with the variation within the Hokkaido population of *M. nivalis* (Fig. 3). The divergence between the two populations of *M. erminea* could have occurred more recently compared with that of *M. nivalis*, probably when the Tsugaru strait was formed. For more convincing explanations, however, further studies of variations in *M. erminea* on the basis of local samples are required. Also, future comparative study together with the continental populations may illustrate the migration history of the two dwarf mustelids into the Japanese islands, as well as the geographic relationships between Japan and the continent in glacial periods.

## ACKNOWLEDGMENTS

We thank T. Saito (Forestry and Forest Products Research Institute), H. Abe (Hokkaido University), Y. Yamamoto (Hiraoka Environ-

mental Science Laboratory), H. Yanagawa (Obihiro University of Agriculture and Veterinary Medicine), M. Hisasue (Japan Environmental Agency), Y. Masuda (Shiretoko Museum), F. Sekiyama (Iwate Prefectural Museum), T. Tanabe (Togakushi fossil Museum), M. Takahashi (Hokkaido University), for supplying specimens. We are grateful to the Institute of Low Temperature Science of Hokkaido University for technical support. This study was supported in parts by Grants-in-Aid for Scientific Research from the Ministry of Education, Science, Sports, and Culture, Japan, and by the Japan Environmental Agency.

## REFERENCES

- Árnason Ú, Johnsson E (1992) The complete mitochondrial DNA sequence of the harbor seal, *Phoca vitulina*. *J Mol Evol* 34: 493–505
- Gerald FS, Thomas DK (1991) Phylogenetic relationships of North American ursids based on analysis of mitochondrial DNA. *Evolution* 45: 218–221
- Hoelzel AR, Lopez JV, Dover GA, O'Brien SJ (1994) Rapid evolution of a heteroplasmic repetitive sequence in the mitochondrial DNA control region of carnivores. *J Mol Evol* 39: 191–199
- Iziri S (1979) Great Glacial Ages. Tokai Univ Press, Tokyo (in Japanese)
- Kawamichi T (ed) (1996) The Encyclopedia of Animals in Japan. Vol. 1: Mammals I. Heibonsha, Tokyo (in Japanese)
- Kawamura Y, Kamei T, Taruno H (1989) Middle and late Pleistocene mammalian faunas in Japan. *Quat Res* 28: 317–326
- Kimura M (1980) A simple method for estimating evolutionary rate of base substitutions through comparative studies of nucleotide sequences. *J Mol Evol* 16: 111–120
- Kumar S, Tamura K, Nei M (1993) MEGA: Molecular Evolutionary Genetics Analysis Version 1.01. Pennsylvania State Univ, Pennsylvania
- Mandahl N, Fredga K (1980) A comparative chromosome study by means of G-, C-, and NOR-bandings of the weasel, the pygmy weasel and the stoat (*Mustela*, Carnivora, Mammalia). *Hereditas* 93: 75–83
- Masuda R, Yoshida MC (1994a) A molecular phylogeny of the family Mustelidae (Mammalia, Carnivora), based on comparison of mitochondrial cytochrome b nucleotide sequences. *Zool Sci* 11: 605–612
- Masuda R, Yoshida MC (1994b) Nucleotide sequence variation of cytochrome b genes in three species of weasels *Mustela itatsi*, *Mustela sibirica*, and *Mustela nivalis*, detected by improved PCR product-direct sequencing technique. *J Mamm Soc Japan* 19: 33–43
- Matsuhashi T, Masuda R, Mano T, Yoshida MC (1999) Microevolution of the mitochondrial DNA control region in the Japanese brown bear (*Ursus arctos*) population. *Mol Biol Evol* 16: 676–684
- Mayer A, Kocher TD, Basasibwaki P and Wilson AC (1990) Monophyletic origin of Lake Victoria cichlid fishes suggested by mitochondrial DNA sequences. *Nature* 347: 550–553
- Nagata J, Masuda R, Kaji K, Kaneko M, Yoshida MC (1998) Genetic variation and population structure of the Japanese sika deer (*Cervus nippon*) in Hokkaido Island, based on mitochondrial D-loop sequences. *Mol Ecol* 7: 871–877
- Nakagawa R, Kawamura Y, Fujita M (1997) Quaternary mammalian remains from Fudô-dô cave on the Hirao-dai Karst Plateau, Fukuoka Prefecture, Japan. *J Speleol Soc Japan* 22: 43–54 (in Japanese with English abstract)
- Nowak RM (1991) Walker's Mammals of the World, 5th ed. Johns Hopkins Univ Press, Baltimore and London.
- Obara Y (1991) Karyosystematics of the mustelid carnivores of Japan. *Honyurui Kagaku (Mammalian Science)* 30: 197–220 (in Japanese with English abstract)
- Ohshima K (1991) The late-Quaternary sea-level change of the Japanese islands. *J Geography* 100: 967–975 (in Japanese)
- Saitou N, Nei M (1987) The neighbor-joining method: A new method for reconstructing phylogenetic trees. *Mol Biol Evol* 4: 406–425
- Sambrook J, Fritsch EF, Maniatis T (1989) *Molecular Cloning: A Laboratory Manual*, 2nd ed. Cold Spring Harbor Laboratory Press, New York
- Vigilant L, Pennington R, Harpending H, Kocher TD, Wilson AC (1989) Mitochondrial DNA sequences in single hairs from a southern African population. *Proc Natl Acad Sci USA* 86: 9350–9354
- Walsh PS, Metzger DA, Higuchi R (1991) Chelex® 100 as a medium for simple extraction of DNA for PCR-based typing from forensic material. *Biotechniques* 10: 506–513

(Received January 26, 1999 / Accepted June 18, 1999)