



Mean vertical deformation map in Jakarta coastal area.

Source: Journal of Coastal Research, 102(sp1)

Published By: Coastal Education and Research Foundation

URL: <https://doi.org/10.2112/1551-5036-102.sp1.i>

BioOne Complete (complete.BioOne.org) is a full-text database of 200 subscribed and open-access titles in the biological, ecological, and environmental sciences published by nonprofit societies, associations, museums, institutions, and presses.

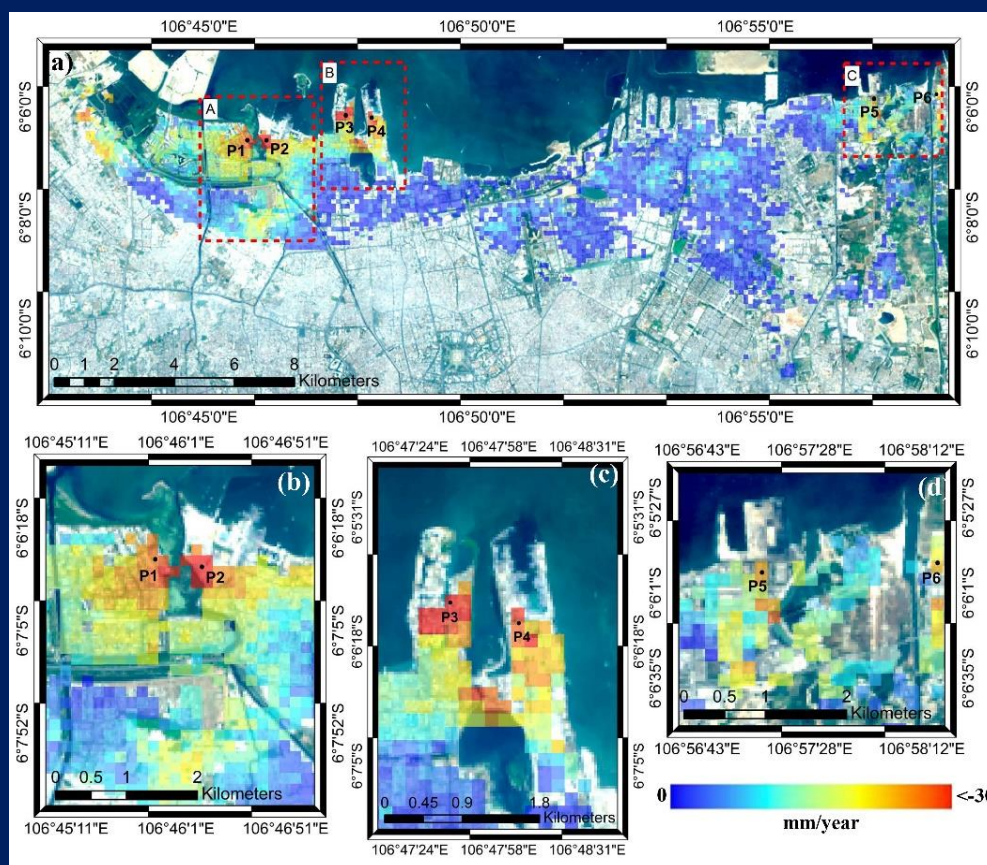
Your use of this PDF, the BioOne Complete website, and all posted and associated content indicates your acceptance of BioOne's Terms of Use, available at www.bioone.org/terms-of-use.

Usage of BioOne Complete content is strictly limited to personal, educational, and non - commercial use. Commercial inquiries or rights and permissions requests should be directed to the individual publisher as copyright holder.

BioOne sees sustainable scholarly publishing as an inherently collaborative enterprise connecting authors, nonprofit publishers, academic institutions, research libraries, and research funders in the common goal of maximizing access to critical research.

Advances in Geospatial Research of Coastal Environments

Guest Editors: Hyung-Sup Jung, Saro Lee, Joo-Hyung Ryu, and Tinwei Cui



Journal of Coastal Research Special Issue #102

An International Forum for the Littoral Sciences
Christopher Makowski, Ph.D.
Editor-in-Chief

Published by



JOURNAL OF COASTAL RESEARCH

An International Forum for the Littoral Sciences

CHEF-HERAUSGEBER

313 S. Braeside Court
Asheville, NC
28803, U.S.A.

EDITOR-IN-CHIEF EMERITUS

Charles W. Finkl
Coastal Education and Research
Foundation, Inc. (CERF)
313 S. Braeside Court
Asheville, NC 28803, U.S.A.
cfinkl@cerf-jcr.com

EDITOR-IN-CHIEF

Christopher Makowski, Ph.D.

Coastal Education and Research Foundation, Inc. (CERF)

Editorial Offices:
7570 NW 47th Avenue
Coconut Creek, FL
33073, U.S.A.

RÉDACTEUR-EN-CHEF

(Business Office, Coconut Creek)
Website: www.CERF-JCR.org
E-mail: cmakowski@cerf-jcr.com

EDITORIAL ASSISTANT

Barbara Russell
Coastal Education and Research
Foundation, Inc. (CERF)
7570 NW 47th Avenue
Coconut Creek, FL 33073, U.S.A.
barbara@cerf-jcr.com

BOOK REVIEW EDITOR

Luciana S. Esteves
Faculty of Science and Technology
Bournemouth University
Dorset, England, U.K.
lesteves@bournemouth.ac.uk

WEB DESIGN & DEVELOPMENT

Jon Finkl
Media Mine
17600 River Ford Drive
Davidson, NC 28036, U.S.A.
jon@mediamine.net

MITHERAUSGEBER

Edward J. Anthony
Coastal Geomorphology
Dunkerque, France
Patrick Barnard
Coastal Geomorphology
Santa Cruz, California
Natalia Bugajny
Coastal Geomorphology
Szczecin, Poland
M. Paula Bunicentro
Coastal Geomorphology
Buenos Aires, Argentina
David M. Bush
Coastal Geology & Hazards
Carrollton, Georgia
Ilya V. Buynovich
Coastal Geology
Philadelphia, Pennsylvania
Javier A. Carrió
Sediment Processes
Valencia, Spain
Insik Chun
Coastal Engineering
Seoul, Republic of Korea
Vanda Claudino-Sales
Coastal Dynamics, Dunes
Ceard, Brazil
Mark Crowell
Coastal Zone Management
McLean, Virginia
Omar Defeo
Sandy Beach Ecology
Montevideo, Uruguay
Joseph F. Donoghue
Coastal Morphology & Hazards
Orlando, Florida
Jean Ellis
Aeolian Sediment Transport
Columbia, South Carolina
Hany Elwany
Coastal Engineering,
Oceanography
La Jolla, California
Luciana Esteves
Coastal Flooding & Erosion
Bournemouth, England, UK
Niki Evelpidou
Sea-Level Change,
Palaeogeography
Athens, Greece
Oscar Manuel Ferreira
Storm Impacts
Faro, Portugal

Duncan M. FitzGerald
Sediment Transport
Boston, Massachusetts
Kazimierz K. Furmańczyk
Marine Cartography
Szczecin, Poland
Allen Gontz
Geophysics, Stratigraphy
San Diego, California
Gary B. Griggs
Coastal Engineering & Hazards
Santa Cruz, California
Pramod Hanamgond
Coastal Geomorphology
Belgaum, India
Hans Hanson
Coastal Protection
Lund, Sweden
Simon Haslett
Paleoceanography
Swansea, Wales, UK
Michael Hilton
Dune Geomorphology & Ecology
Dunedin, New Zealand
James R. Houston
Sea-Level Change
Vicksburg, Mississippi
Wenrui Huang
Coastal Hydrodynamics
Tallahassee, Florida
Federico I. Isla
Sea-Level Change
Mar Del Plata, Argentina
Nancy L. Jackson
Coastal Geomorphology
Newark, New Jersey
Markes E. Johnson
Paleoshores, Coastal Sand Dunes
Williamstown, Massachusetts
Timothy Kana
Coastal Science & Engineering
Columbia, South Carolina
Dieter H. Kelletat
Coastal Geomorphology
Essen / Cologne, Germany
Joseph T. Kelley
Sea-Level Change
Orono, Maine
Björn Kjerfve
Physical Oceanography, Wetlands
College Station, Texas
Nobuhisa Kobayashi
Coastal Engineering
Newark, Delaware

ASSOCIATE EDITORS

Vladimir N. Kosmynin
Coral Reefs, Coastal Ecology
Tallahassee, Florida
Michael J. Lacey
Coastal Landforms & Processes
West Branch, Iowa
Stephen P. Leatherman
Barrier Islands, Beach Erosion
Miami, Florida
Jay Jooyong Lee
Rip Currents, Coastal Hazards
Busan, Republic of Korea
Charles Lemckert
Environmental Fluid Dynamics
Bruce, ACT, Australia
Hak Soo Lim
Hydrodynamics, Coastal
Engineering
Busan, Republic of Korea
Ioannis Liritzis
Geophysical Proxy Data,
Archaeometry
Rhodes, Greece
J. Paul Liu
Sea-Level Change, Deltas
Raleigh, North Carolina
Michel M. de Mahiques
Sediment Processes
São Paulo, Brazil
Gonzalo C. Malvárez
Beach Morphodynamics
Seville, Spain
Nobuo Mimura
Environmental Engineering
Ibaraki, Japan
Norberto C. Nadal-Caraballo
Coastal Hazards
Vicksburg, Mississippi
Fatima Navas
Coastal Morphodynamics
Seville, Spain
Robert Nicholls
Global Climate Change
Southampton, England, UK
Karl F. Nordstrom
Coastal Geomorphology
New Brunswick, New Jersey
Julian Orford
Gravel Beaches, Storm Events
Belfast, Northern Ireland, UK
Phil D. Osborne
Sediment Dynamics
Vancouver, BC, Canada

Hugh Parker
Airborne Lidar Bathymetry
Adelaide, SA, Australia
Charitha B. Pattiaratchi
Physical Oceanography
Crawley, WA, Australia
Carlos Pereira da Silva
Coastal Zone Management
Lisbon, Portugal
Michael Phillips
Coastal Geomorphology
Doha, Qatar
Orrin H. Pilkey, Jr.
Coastal Geology
Durham, North Carolina
Nobert P. Psuty
Coastal Geomorphology
New Brunswick, New Jersey
Elijah W. Ramsey, III
Coastal Image Processing
Lafayette, Louisiana
Tiffany Roberts Briggs
Coastal Geomorphology
Boca Raton, Florida
Kirt Rusenko
Sea Turtles, Dune Restoration
Boca Raton, Florida
Daniele Scarponi
Marine Paleocology
Bologna, Italy
Anja Scheffers
Coastal Hazards,
Palaeoclimatology
Lismore, NSW, Australia
Vic Semeniuk
Mangroves
Perth, WA, Australia
Douglas J. Sherman
Coastal & Aeolian Geomorphology
Tuscaloosa, Alabama
Andrew D. Short
Coastal Geomorphology
Sydney, NSW, Australia
Pravi Shrestha
Coastal Engineering
Irvine, California
Tom Spencer
Biogeomorphology
Cambridge, England, UK
Marcel J.F. Stive
Coastal Hydrodynamics
Delft, The Netherlands

COMITÉ DE REDACTION

Vallam Sundar
Coastal Engineering
Chennai, India
Ana Teodoro
Remote Sensing
Porto, Portugal
E. Robert Thielert
Marine Geology
Woods Hole, Massachusetts
Hannes Tönisson
Coastal Evolution
Tallinn, Estonia
Arthur C. Trembanis
Coastal Morphodynamics
Newark, Delaware
Frank Van Der Meulen
Coastal Zone Management
Delft, The Netherlands
Ana Vila Concejo
Coastal Morphodynamics
Sydney, NSW, Australia
Ian J. Walker
Coastal Dunes & Sediments
Tempe, Arizona
Ping Wang
Beach Morphodynamics
Tampa, Florida
Phil J. Watson
Sea-Level Change
Gosford, NSW, Australia
Harry F. Williams
Paleotempestology
Denton, Texas
Colin D. Woodroffe
Coastal Geomorphology
Wollongong, NSW, Australia
Zhaoqing Yang
Hydrodynamic Modeling
Seattle, Washington
Robert S. Young
Coastal Processes
Cullowhee, North Carolina
Guoliang Yu
Sediment Transport
Shanghai, China
Saiyu Yuan
Water Flow, Sediment Transport
Nanjing, China



THE JOURNAL OF COASTAL RESEARCH (JCR) (ISSN 0749-0208) IS PUBLISHED BIMONTHLY FOR \$115.00 FOR INDIVIDUAL US CERF MEMBERS, \$125.00 FOR INDIVIDUAL INTERNATIONAL CERF MEMBERS, \$519.00 FOR US INSTITUTIONS, AND \$541.00 FOR INTERNATIONAL INSTITUTIONS BY THE COASTAL EDUCATION AND RESEARCH FOUNDATION, INC. (CERF), 7570 NW 47TH AVENUE, COCONUT CREEK, FL 33073-2723. PERIODICALS POSTAGE PAID AT FORT LAUDERDALE, FL AND ADDITIONAL MAILING OFFICES. **POSTMASTER:** SEND ADDRESS CHANGES TO JOURNAL OF COASTAL RESEARCH, ALLEN PRESS ASSOCIATION MANAGEMENT, P.O. BOX 1897, LAWRENCE, KS 66044-3018.

© 2020 Coastal Education and Research Foundation, Inc. [CERF].

© This paper meets the requirements of ANSI/NISO Z39.48-1992 (Permanence of Paper).



JOURNAL OF COASTAL RESEARCH

An International Forum for the Littoral Sciences

Supporting Scientific Institutions



- Consorzio Nazionale Interuniversitario per le Scienze del Mare (Co.N.I.S.Ma.) [Rome, Italy; www.conisma.it/]
- Delft University of Technology [Department of Hydraulic Engineering, Delft, The Netherlands; <http://www.citg.tudelft.nl/over-faculteit/afdelingen/hydraulic-engineering/>]
- Duke University [Earth and Ocean Sciences Division, Durham, North Carolina, U.S.A.; <https://nicholas.duke.edu/marinelab>]
- Griffith University [Center for Infrastructure Engineering and Management, Southport, Queensland, Australia; <https://www.griffith.edu.au/>]
- Ibaraki University [Center for Water Environmental Studies, Mito, Japan; <http://www.cwes.ibaraki.ac.jp/>]
- International Geographical Union (IGU) [Commission on Coastal System (CCS); <http://www.igu-ccs.org/>]
- Royal Belgian Institute of Natural Sciences [Management Unit of the North Sea Mathematical Models (MUMM), Brussels, Belgium; <http://www.mumm.ac.be/EN/index.php>]
- Rutgers University [Institute of Marine and Coastal Sciences (IMCS), New Brunswick, New Jersey, U.S.A.; <http://marine.rutgers.edu/main/>]
- Universidad de la República [Marine Science Unit, Montevideo, Uruguay; <http://www.imber.info/Science/National-Network/URUGUAY/>]
- Universidade Nova de Lisboa [e-Geo Center for Geographical and Regional Planning Studies, Lisbon, Portugal; <http://e-geo.fcsh.unl.pt/>]
- University of California, Santa Cruz [Institute of Marine Sciences, Santa Cruz, California, U.S.A.; <http://ims.ucsc.edu/>]
- University of Delaware [School of Marine Science and Policy, Newark, Delaware, U.S.A.; <http://www.ocean.udel.edu>]
- University of Maine [Climate Change Institute, Orono, Maine, U.S.A.; <http://climatechange.umaine.edu/>]
- University of Sydney [Coastal Studies Unit, Sydney, New South Wales, Australia; <http://sydney.edu.au/>]
- University of Szczecin [Institute of Marine and Coastal Science, Szczecin, Poland; <http://www.wnoz.zti.km.szczecin.pl/en/1/inom/structure/>]
- University of Ulster [Environmental Sciences Research Institute, Coleraine, Northern Ireland; <http://www.ulster.ac.uk/es/research/>]
- University of Wales, Trinity Saint David [Swansea Metropolitan University, Mount Pleasant, Swansea, South Wales, U.K.; <http://www.uwtsd.ac.uk/>]
- U.S. Army Corps of Engineers [Coastal and Hydraulics Laboratory (CHL), Vicksburg, Mississippi, U.S.A.; <http://chl.erdc.usace.army.mil/>]
- U.S. Geological Survey [National Wetlands Research Center, Lafayette, Louisiana, U.S.A.; <http://www.nwrc.usgs.gov/>]

Aims and Scope of the *Journal of Coastal Research* (JCR)

Journal of Coastal Research (JCR), an International Forum for the Littoral Sciences, is dedicated to all aspects of coastal research. These include geology, biology, geomorphology (physical geography), climate, littoral oceanography, hydrography, coastal hydraulics, environmental (resource) management, engineering, and remote sensing. Although each field functions effectively within its own purview, the cross-disciplinary nature of coastal studies requires familiarity with other fields as well. Hence, the scope of topics is necessarily broad in order to address the complexity of coastal biophysical and socio-economic interactions. Because of the wide range of interrelated topics, the journal invites original contributions and manuscripts dealing with theory, methodology, techniques, and field or applied topic studies on interdisciplinary coastal issues.

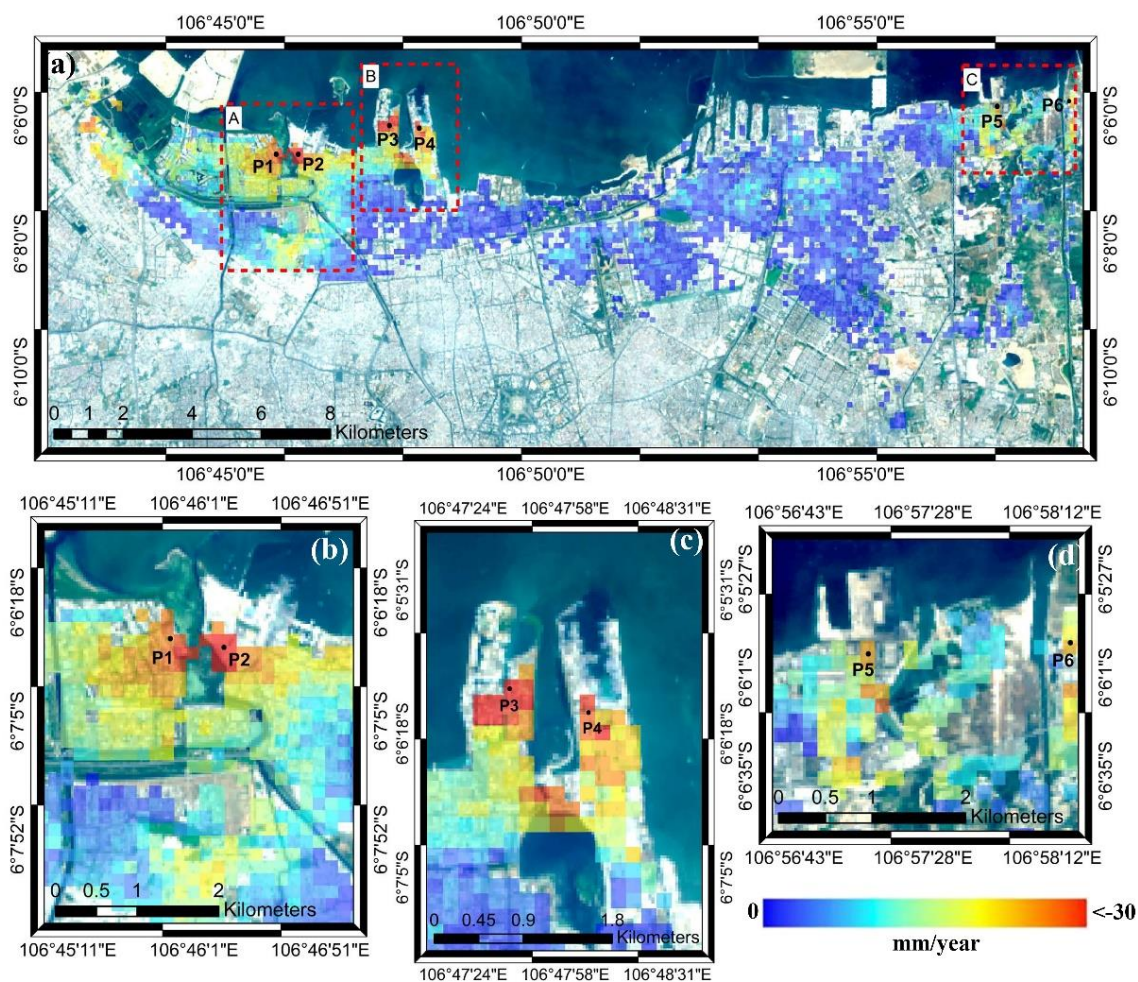
The journal encourages the dissemination of knowledge and understanding of the coastal zone by promoting cooperation and communication between specialists in different disciplines. Natural scientists, for example, are encouraged to collaborate with professionals in other fields to prepare contributions relating to the coastal zone that foster increased appreciation of coastal environments and processes. By means of this journal, with its scholarly and professional papers, systematic review articles, book and symposia reviews, communications and news, and special topical issues, an international forum for the development of integrated coastal research is provided.

Advertising, Editorial, and Subscription Information

Advertising and Editorial Office: All advertising and editorial correspondence should be sent to Dr. Chris Makowski, Editor-in-Chief, *Journal of Coastal Research*, 7570 NW 47th Avenue, Coconut Creek, FL 33073, U.S.A. PHONE: (+1) 954-899-8416. E-MAIL: cmakowski@cerf-jcr.com WEBSITE: www.cerf-jcr.org

Subscription Information: The *Journal of Coastal Research* is a bimonthly publication. Calendar-year (2020) print and online subscription prices for the JCR are: \$115.00 for US CERF members / \$125.00 for International CERF members (\$95.00 for online only), and \$519.00 for US institutions / \$541.00 for International institutions (\$437.00 for online only). Additional surface charges may apply to subscribers located outside of the USA. For additional membership and subscription forms and information, please go to www.cerf-jcr.org. To obtain a membership or subscription form by mail, please send request to *Journal of Coastal Research*, P.O. Box 7065, Lawrence, KS 66044. Back Issues and Special Issues of the JCR, when available, can be directly requested at: cerf.jcr@gmail.com.

Abstracting Information: The *Journal of Coastal Research* (JCR) is currently surveyed in: *Web of Science* (WoS) *Core Collection* / *Web of Knowledge* (Clarivate Analytics); *Science Citation Index Expanded*; *SCOPUS* (Elsevier); *BioOne Complete*; *JSTOR*; *EBSCO*; *ProQuest*; *Charlesworth*; *BIOSIS Previews*; *Zoological Record*; *Biological Abstract*; *H.W. Wilson Company*; *Thomson Reuters (ISI)*; *Cabells Scholarly Analytics*; *Essential Science Indicators*; *Chemical Abstracts Service (CAS)*; *Gale Group* (Gale / Cengage Learning); *Copyright Clearance Center, Inc. (CCC)*; *Current Contents - Physical, Chemical & Earth Sciences*; and *Current Contents - Agriculture, Biology & Environmental Sciences*.



Mean vertical deformation map in Jakarta coastal area. The mean vertical deformation map above was generated using Sentinel-1 SAR data images between 2017-2020 using StaMPS algorithm. The mean vertical deformation map was overlaid with the depicted image from natural band combination (B4, B3, B2) of Landsat 8 OLI/TIRS C1 Level-1 taken on September 11, 2019, acquired by USGS.

Journal of Coastal Research (JCR) Special Issue #102

Advances in Geospatial Research of Coastal Environments

TABLE OF CONTENTS

Editorial: Special Issue on “Advances in Geospatial Research of Coastal Environments”

Hyung-Sup Jung, Saro Lee, Joo-Hyung Ryu, and Tingwei Cui vi-xiii

Estimation of Aboveground Vegetation Nitrogen Contents in the Yellow River Estuary Wetland Using GaoFen-1 Remote Sensing Data

Jianbu Wang, Guangbo Ren, Zhaoyang Lin, Andong Wang, Yabin Hu, Xiaomin Li, Peiqiang Wu, Yi Ma, and Jie Zhang 1-10

Multi-scale Spectral-Spatial Remote Sensing Classification of Coral Reef Habitats Using CNN-SVM

Jiaxin Wan and Yi Ma 11-20

High-accuracy Remote Sensing Water Depth Retrieval for Coral Islands and Reefs Based on LSTM Neural Network

Xiao-Min Li, Yi Ma, Zi-Hao Leng, Jie Zhang, and Xi-Xi Lv 21-32

A Method for Classifying Land and Ocean Area by Removing Sentinel-1 Speckle Noise

Hyeong-Gyeong Han, and Moun-Jin Lee 33-38

Analysis of Trends in Marine Water Quality Using Environmental Impact Assessment Monitoring Data : A Case Study of Busan New Port

Sunmin Lee, Eojin Lee, Heon Seok Yoo, and Moun-Jin Lee 39-46

Exploring Changes in Coastal Environment Policy Using Text Mining: A Case Study in South Korea

Nam-Wook Cho and Moun-Jin Lee 47-53

Determine the Stumpf 2003 Model Parameters for Multispectral Remote Sensing Shallow Water Bathymetry

Jinshan Zhu, Peng Hu, Lulu Zhao, Lei Gao, Jiawei Qi, Ya Zhang, and Ruifu Wang 54-62

The Effect of Laver-farming on the Distribution of Copepod Community in the West Coast of Korea

Seong-Ki Kim, Jeong-Cheol Kim, and Jong-Yun Choi 63-68

Changing Distributions of Zooplankton Communities in a Coastal Lagoon in Response to Rainfall Seasonality

Jong-Yun Choi, Jeong-Cheol Kim, and Seong-Ki Kim 69-74

Land Subsidence Measurement of Jakarta Coastal Area Using Time Series Interferometry with Sentinel-1 SAR Data

Wahyu Luqmanul Hakim, Arief Rizqiyanto Achmad, Jinah Eom, and Chang-Wook Lee 75-81

Optical Remote Sensing Ship Image Classification Based on Deep Feature Combined Distance Metric Learning

Shuangmei Zhao, Yongjie Xu, Wenjing Li, and Haitao Lang 82-87

Characteristics of Geological Lineaments along the Eastern Coast of the Korean Peninsula: A Statistical Approach	
Taehyung Kim, Young-Seog Kim, and Hong-Jin Lee.....	88-100
Topographical Change in Coastal Areas Arising from Soil Erosion in the Riparian Zone	
Jeong-Cheol Kim, Hyeon-Jeong Lee, Jong-Yun Choi, Seong-Ki Kim, and Hyung-Sup Jung.....	101-106
Distribution and Utilization Plan of Reclaimed Lands (RLs) as Waterfowl Habitat on the South Coast of Korea	
Seong-Ki Kim, Jeong-Cheol Kim, and Jong-Yun Choi.....	107-112
An Algorithm for Sea Ice Drift Retrieval Based on Trend of Ice Drift Constraints from Sentinel-1 SAR Data	
Xi Zhang, Yixun Zhu, Jie Zhang, Junmin Meng, Xiaona Li, and Xingxing Li	113-126
Observation of Diffusive Methane Emission from Holocene Mud Deposits on the Continental Shelf Offshore Southeastern Korea	
Jong-Hwa Chun, Yuri Kim, Ji-Young Choi, Young-Jun Kim, Hong-Jin Lee, and Yong Hoon Kim.....	127-136
Oil Spill Detection of Kerch Strait in November 2007 from DualPolarized TerraSAR-X Image Using Artificial and Convolutional Neural Network Regression Models	
Won-Kyung Baek, Hyung-Sup Jung, and Daeseong Kim.....	137-144
Coastal Image Captioning	
Qiaoqiao Yang, Guangxing Wang, Xiaoyu Zhang, Christos Grecos, and Peng Ren	145-150
Coastal Image Classification under Noisy Labels	
Xiaoxiao Tai, Guangxing Wang, Christos Grecos, and Peng Ren.....	151-156
Geostatistical Classification of Intertidal Surface Sediments Using Log-ratio Transformation and High-resolution Remote Sensing Imagery	
No-Wook Park and Dong-Ho Jang.....	157-165
Ship Matching Using Convolutional Neural Network in Multi-source Synthetic Aperture Radar Images	
Lihui Niu and Haitao Lang.....	166-175
Remote Sensing Classification of Aquatic Vegetation in Ulansuhai Lake Based on Discrete Particle Swarm Optimization Algorithm	
Mengmeng Cao, Song Qing, Yuchunzi Du, Ruiqiang Yuan, Buri Shun, Yanling Hao, and Wenjing Zhao	176-186
High-Resolution Seismic Stratigraphy Offshore Haeundae Beach in Busan, South Korea	
Dong-Lim Choi, Dong-Hyeok Shin, Jae-Youll Jin, Yong-Kuk Lee, and Byung-Cheol Kum.....	187-193
Absolute Salinity Measurement Based on Microfiber Coaxial Mach-Zehnder Interferometer	
Yu Li, Jing Wang, and Shanshan Wang	194-201
Machine Learning Approaches for Quantifying <i>Margalefidinium Polykrikoides</i> Bloom from Airborne Hyperspectral Imagery	
Jisun Shin, Soo Mee Kim, and Joo-Hyung Ryu	202-207
Comparison of Input Image Dimensions for Ship Detection from KOMPSAT-5 SAR Image Using Deep Neural Network	
Wook Park, Won-Kyung Baek, Joong-Sun Won, Hyung-Sup Jung.....	208-217

Land Subsidence Measurement in Reclaimed Coastal Land: Noksan Using C-Band Sentinel-1 Radar Interferometry	
Arip Syaripudin Nur, Arief Rizqiyanto Achmad, and Chang-Wook Lee	218-223
Classification of Green Tide at Coastal Area Using Lightweight UAV and only RGB Images	
Keunyoung Kim, Bum-Jun Kim, Euihyun Kim, and Joo-Hyung Ryu	224-231
A Study on Seasonal Dynamics of Suspended Particulate Matter in Korean Coastal Waters Using GOCI	
Yoon-Kyung Lee, Jong-Kuk Choi, and Hee Jun Lee	232-245
Mapping Oyster Reef Distribution Using Komsat-2/3 and Linear Spectral Unmixing Algorithm: A Case Study at Hwangdo Tidal Flat	
Kye-Lim Kim and Joo-Hyung Ryu	246-253
Storage Class Memory Based Hybrid Memory System for Practical Remote Sensing	
Sungmin Koo, Jungmin Seo, Yujae Song, and Seungjae Baek	254-260
Structural Analysis of a Fault-related Anticline in the Southwestern Gyeonggi Massif, Korea Using an Unmanned Aerial Vehicle and Field Surveys: The Role of Rejoining Splays in a Duplex-like Structure	
Inho Kim, Seung-Ik Park, and Hong-Jin Lee	261-270
Remote Sensing of Spatial-temporal Variation of Chlorophyll-a in the Jiaozhou Bay Using 32 Years Landsat Data	
Ming Wu, Yongfang Zhao, Li'e Sun, Jue Huang, Xiaohua Wang, and Yue Ma	271-279
An Arctic Gridded Sea Surface Temperature Product Constructed from Spaceborne Radiometer Data	
Weifu Sun, Jie Zhang, Junmin Meng, Yuheng Li, and Kaixiang Cao	280-286
Assessment of the Ecological Security of the Coastal Zone of the Guangdong/Hong Kong/Macao Greater Bay Area	
Wenjing Zhao, Guirong Zhao, Jing Yang, Min Xu, and Jiefeng Kou	287-295
Deriving Natural Coastlines Using Multiple Satellite Remote Sensing Images	
Changying Wang, Jungang Yang, Jinhua Li, and Jialan Chu	296-302
Remote Sensing of Suspended Particulate Matter in Optically Complex Estuarine and Inland Waters Based on Optical Classification	
Yalei Yue, Song Qing, Ruixiang Diao, and Yanling Hao	303-317
Automatic Extraction of Green Tide Using Dual Polarization Chinese GF-3 SAR Images	
Haifei Yu, Changying Wang, Yi Sui, Jinhua Li, and Jialan Chu	318-325
Geolocation Accuracy Evaluation of GF-4 Geostationary High-Resolution Optical Images over Coastal Zones and Offshore Areas	
Yunhong Wei, Ziyue Zhang, Bing Mu, Ying Li, Quanbin Wang, and Rongjie Liu	326-333
Study on Mangrove of Maximum Likelihood: Reclassification Method in Xiezhou Bay	
Yan Liao, Yaqin Liao, Wenjing Zhao, Qinghua Chen, Ting Li, and Tianjian Yang	334-343

COASTAL EDUCATION AND RESEARCH FOUNDATION (CERF)

7570 NW 47th Avenue
Coconut Creek, FL 33073, U.S.A.

Officers of the Foundation

Founded in 1983 by: Charles W. Finkl, Sr. (Deceased),
Charles W. Finkl, Jr., Rhodes W. Fairbridge (Deceased),
and Maurice L. Schwartz (Deceased)

President &

Executive Director:

Charles W. Finkl

Secretary:

Heather M. Vollmer

Senior Vice President &

Assistant Director:

Christopher Makowski

Executive Assistant:

Barbara Russell

CERF-JCR Regional Vice Presidents

North America

Gary B. Griggs
James R. Houston
Timothy W. Kana
Norberto C. Nadal-Caraballo

Western Europe

Luciana S. Esteves
Carlos Pereira da Silva
Marcel J.F. Stive

Eastern Europe

Niki Evelpidou
Kazimierz K. Furmańczyk

Oceania

Charles Lemckert
Anja Scheffers
Vic Semeniuk
Andrew D. Short

Southeast Asia

Hak Soo Lim
Nobuo Mimura

South America

Vanda Claudino-Sales
Omar Defeo

Middle East and N. Africa

Michael Phillips

Board of Directors (Trustees)

Vanda Claudino-Sales	Stephen P. Leatherman	Vic Semeniuk
Charles W. Finkl	Charles Lemckert	Douglas J. Sherman
Duncan M. FitzGerald	Gonzalo C. Malvárez	Andrew D. Short
Gary B. Griggs	Christopher Makowski	Daniel J. Stanley
James R. Houston	Carlos Pereira da Silva	Marcel J.F. Stive
Robert Huff	Michael Phillips	Phil J. Watson
Timothy W. Kana	Norbert P. Psuty	
Joseph T. Kelley	Elijah W. Ramsey, III	

Lifetime Members

Camilo M. Botero	Victor V. Klemas	Nelson G. Rangel-
David M. Bush	Tetsuya Kusuda	Buitrago
Frédéric Bouchette	Stephen P. Leatherman	Yoshiki Saito
Yong-Sik Cho	Charles Lemckert	Anja Scheffers
Insik Chun	J. Paul Liu	Andrew D. Short
Nicholas K. Coch	Gonzalo C. Malvárez	Rodolfo Silva
Hany Elwany	Ashish J. Mehta	Jean-Daniel Stanley
Kazimierz K.	Norberto C. Nadal-	Marcel J.F. Stive
Furmańczyk	Caraballo	Charles Thibault
Allen Gontz	Fatima Navas	Erik van Wellen
Gary B. Griggs	Philip D. Osborne	Ya Ping Wang
Carl H. Hobbs, III	Michael Phillips	Allan T. Williams
James R. Houston	Orrin H. Pilkey, Jr.	Robert S. Young
Paul S. Kench	Norbert P. Psuty	Wei Zhang
Björn Kjerfve		

Patron Members

Lindino Benedet	John W. Jenson
Georges Chapalain	Timothy W. Kana

CERF-JCR Society Information

The Coastal Education and Research Foundation (CERF) is a non-profit research society dedicated to the advancement of the coastal sciences and serves as the official publisher of the international *Journal of Coastal Research* (JCR). CERF-JCR is devoted to the multi-disciplinary study of complex problems related to the coastal zone. Our purpose is to help in the translation and interpretation of coastal issues for the public and to assist professional and academic research programs by supporting and encouraging field and laboratory studies on a local, national, and global basis. Through printed scientific publications, current online content, and renowned international symposiums, CERF-JCR brings accurate information to both the public and researchers alike on all aspects of coastal issues in an effort to maintain and improve the quality of shoreline resources.

The *Journal of Coastal Research* (JCR) is one of the leading international journals for coastal studies and processes, and is published bi-monthly by the Coastal Education and Research Foundation (CERF). By covering the entire field of coastal research, the JCR encompasses all subjects relevant to natural and engineered environments (*i.e.* freshwater, brackish, or marine) and the protection/management of their resources in the vicinity of coastlines around the world. Even though the journal broadly focuses on immediate shoreline zones, the JCR also embraces those coastal environments that either reach some indefinite distance inland or that extend seaward beyond the outer margins of the sublittoral (neritic) zone. We encourage you to visit www.cerf-jcr.org for more information and invite you all to be a part of our CERF-JCR coastal research society.



CERF-JCR MEMBERSHIP

Society members are those individuals that support the aims of CERF and the JCR. More information is available at: www.cerf-jcr.org. CERF-JCR Memberships are available in different categories with certain privileges and can be viewed at: <https://cerf.allenpress.com/cerf/MEMBERSHIP.aspx>

Subscription information is available upon request by writing to: cerf.jcr@gmail.com. The CERF-JCR subscriptions office is located at: Allen Press, Inc., P.O. Box 1897, Lawrence, KS 66044, U.S.A.

Editor-in-Chief

Christopher Makowski, Ph.D.

Dr. Christopher Makowski is the Senior Vice President and Co-Executive Director of the Coastal Education and Research Foundation (CERF), the official publisher of the international *Journal of Coastal Research* (JCR). He received B.Sc. (Marine Biology), M.Sc. (Marine Ecosystem Diversity), and Ph.D. (Coastal Geoscience and Remote Sensing of Biogeomorphological Resources) degrees from Florida Atlantic University of Boca Raton, Florida, USA, and has worked for over 25 years in the coastal research community, holding titles of Assistant Director (Coastal Planning & Engineering's Marine Science and Biological Research Department), Principal Marine Scientist (Collier County, Florida, USA), and Senior Advisor (International Coastal Symposium [ICS]). Dr. Makowski has published numerous peer reviewed papers, authored multiple chapters, and co-edited various volumes in Springer's Coastal Research Library (CRL) Series and Encyclopedia of Earth Sciences Series (EESS). In addition to these accomplishments, he is professionally recognized by the American Academy of Underwater Sciences (AAUS) and is certified as a Master Scuba Diver Trainer through the Professional Association of Diving Instructors (PADI), having logged over 2,000 underwater dives on six different continents. Other professional registrations, certifications, and accreditations include: Coastal Education and Research Foundation (CERF) Board of Directors (Trustees), BioOne Board of Directors, International Society for Reef Studies (ISRS) Member, Florida Association of Environmental Professionals (FAEP) Chapter Member, American Academy of Underwater Sciences (AAUS) Registered Diving Safety Officer, American Association for the Advancement of Science (AAAS) Member, National Marine Fisheries Service (NMFS) Certified Marine Mammal and Protected Species Observer, Professional Association of Diving Instructors (PADI) Open Water Scuba Diver Instructor, PADI Enriched Air Nitrox Specialty Instructor, Emergency First Responder (CPR/FirstAid/AED) Instructor, PADI Specialty Underwater Photographer Instructor, and Divers Alert Network (DAN) Sustaining Member.

For more information, please visit Dr. Makowski's home page at: www.cerf-jcr.org

International Coastal Symposium (ICS) Official Meeting of CERF-JCR

The International Coastal Symposium (ICS) was originally set up by Per Bruun (deceased) and Charles W. Finkl as the official meeting of the Coastal Education and Research Foundation (CERF) and the *Journal of Coastal Research* (JCR), with one of the first meetings being held in Hilton Head, South Carolina, in 1993. After the repeated success of these meetings, CERF-JCR moved the ICS to an international platform by holding these conferences in conjunction with local sponsors in the United States, Australia, Brazil, Iceland, New Zealand, Northern Ireland, Poland, Portugal, and South Korea. The ICS brings together delegates from all over the world to collaborate and discuss the most current coastal research studies and projects. During the ICS 2014, which was held in Durban, South Africa, a grand celebration took place to mark the 30th Anniversary of CERF and the JCR. For more information, please visit www.cerf-jcr.org.

Journal of Coastal Research (JCR)

SPECIAL ISSUE NO. 102 (pages 1-343)

ISSN 0749-0208

FALL 2020

