

## **EXOPHTHALMUS CAUSED BY THYROID TISSUE IN THE CHOROID LAYER OF THE EYE IN *Coris gaimard***

Author: SCHUBERT, G.

Source: Bulletin of the Wildlife Disease Association, 5(2) : 113

Published By: Wildlife Disease Association

URL: <https://doi.org/10.7589/0090-3558-5.2.113>

---

BioOne Complete ([complete.BioOne.org](https://complete.BioOne.org)) is a full-text database of 200 subscribed and open-access titles in the biological, ecological, and environmental sciences published by nonprofit societies, associations, museums, institutions, and presses.

Your use of this PDF, the BioOne Complete website, and all posted and associated content indicates your acceptance of BioOne's Terms of Use, available at [www.bioone.org/terms-of-use](https://www.bioone.org/terms-of-use).

Usage of BioOne Complete content is strictly limited to personal, educational, and non - commercial use. Commercial inquiries or rights and permissions requests should be directed to the individual publisher as copyright holder.

---

BioOne sees sustainable scholarly publishing as an inherently collaborative enterprise connecting authors, nonprofit publishers, academic institutions, research libraries, and research funders in the common goal of maximizing access to critical research.

**EXOPHTHALMUS CAUSED  
BY THYROID TISSUE  
IN THE CHOROID LAYER  
OF THE EYE IN  
*Coris gaimard***

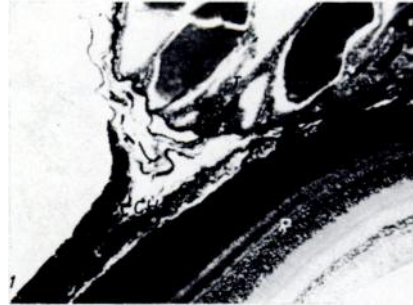
In the aquarium of the "Wilhelma" zoo of Stuttgart, Germany, a *Coris gaimard* developed a marked exophthalmus at the right side. The fish had lived in the zoo for about 15 months, and was feeding normally. Other fish of the same and different species living in the same tank showed no signs of disease. There are various causes of exophthalmus in fish, the most common being bacterial infections, such as those caused by *Mycobacterium* and *Aeromonas* spp., or parasitic larvae.

The fish was killed and examined. An unusual number of diatoms was found on the skin, but no other parasites or abnormalities except the protruding eye, could be detected. Behind the somewhat enlarged eye were several small brownish nodules (0.5mm in diameter). Stained smears revealed no acid-fast or other bacteria. The eye with the surrounding tissue was fixed and embedded in paraffin. The carcass was discarded.

There was no evidence of a bacterial infection in the stained tissue sections, but there were areas of thyroid tissue and a large blood sinus underneath and partly within the choroid layer of the eye. The thyroid follicles showed no sign of abnormal activity.

In fish, thyroid tissue has been found in various organs including ovary, spleen, kidney, rectum, heart, muscle, and bone. Pflugfelder (1966. *Endokrinologie*, 49: 87) has reviewed the literature. He reported that, after epiphysectomy, thyroid follicles entered the blood vessels and thus were transported to various organs. Baker et al (1955. *Cancer Res.* 15: 118-123) also found follicles in the choroid layer of the eye in inbred sword tail (*Xiphophorus helleri*).

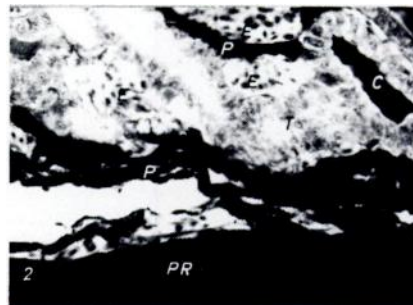
It would be interesting to learn how frequently exophthalmus is caused by this abnormal location of thyroid tissue in both aquarium and free living fish.



FIGURES 1 and 2.

*Thyroid tissue in the eye of Coris gaimard*

E = erythrocytes, C = colloid,  
CH = choroid layer of the eye  
P = pigment,  
PR = Pigment layer of the retina,  
T = thyroid tissue



G. SCHUBERT

*Institute of Zoology  
University of Hohenheim  
7 Stuttgart-Hohenheim, Germany*

November 22, 1968