

Infestation of *Xyleborus volvulus* (Fabricius) (Coleoptera: Curculionidae: Scolytinae) in *Mangifera indica* L. (Mangifera: Anacardiaceae) in Manzanillo, Colima

Authors: Castrejón-Antonio, Jesús E., Montesinos-Matías, Roberto, Tamez-Guerra, Patricia, Guardiola, Lucía T. Fuentes, Laureano-Ahuelican, Bruno, et al.

Source: Florida Entomologist, 101(4) : 676-679

Published By: Florida Entomological Society

URL: <https://doi.org/10.1653/024.101.0405>

The BioOne Digital Library (<https://bioone.org/>) provides worldwide distribution for more than 580 journals and eBooks from BioOne's community of over 150 nonprofit societies, research institutions, and university presses in the biological, ecological, and environmental sciences. The BioOne Digital Library encompasses the flagship aggregation BioOne Complete (<https://bioone.org/subscribe>), the BioOne Complete Archive (<https://bioone.org/archive>), and the BioOne eBooks program offerings ESA eBook Collection (<https://bioone.org/esa-ebooks>) and CSIRO Publishing BioSelect Collection (<https://bioone.org/csiro-ebooks>).

Your use of this PDF, the BioOne Digital Library, and all posted and associated content indicates your acceptance of BioOne's Terms of Use, available at www.bioone.org/terms-of-use.

Usage of BioOne Digital Library content is strictly limited to personal, educational, and non-commercial use. Commercial inquiries or rights and permissions requests should be directed to the individual publisher as copyright holder.

BioOne is an innovative nonprofit that sees sustainable scholarly publishing as an inherently collaborative enterprise connecting authors, nonprofit publishers, academic institutions, research libraries, and research funders in the common goal of maximizing access to critical research.

Infestation of *Xyleborus volvulus* (Fabricius) (Coleoptera: Curculionidae: Scolytinae) in *Mangifera indica* L. (Mangifera: Anacardiaceae) in Manzanillo, Colima

Jesús E. Castrejón-Antonio¹, Roberto Montesinos-Matías^{2,*}, Patricia Tamez-Guerra¹, Lucía T. Fuentes Guardiola², Bruno Laureano-Ahuelican³, and Hugo C. Arredondo-Bernal²

Ambrosia beetles are a natural part of the wood decomposition processes in ecosystems; however, some exotic species can cause serious problems in economically important crops, or seriously threaten native plant species (Sobel et al. 2015). Outstanding examples confirming this are the introduction of *Xyleborus glabratus* Eichhoff (Coleoptera: Curculionidae: Scolytinae) and *Euwallacea* sp. (Coleoptera: Curculionidae: Scolytinae) ambrosia beetles (Pisani et al. 2015), native to Asia, but introduced into the USA near Savannah, Georgia. This has resulted in the death of more than 500 million trees of the family Lauraceae (Peña et al. 2012), including avocado trees, *Persea americana* Miller (Lauraceae). These beetles are characterized by their symbiotic and nutritional relationship with fungi that grow on the walls of their galleries, which are located in the xylem of host trees (Hughes et al. 2015). The fungal growth inside the vascular system of living trees hinders the flow of water and nutrients, resulting in injury or mortality of many host plant species in a short period of time (Fraedrich et al. 2008). The *X. glabratus* beetle transmits the fungus *Raffaella lauricola* TC Harr., Fraedrich & Aghayeva (Ophiostomatales: Ophiostomataceae), that causes an affliction known as laurel wilt disease (Harrington et al. 2008). A second exotic species is the polyphagous shot hole borer *Euwallacea* sp., an ambrosia beetle that transmits the fungi *Fusarium euwallaceae* (S. Freeman, Z. Mendel, T. Aoki & O'Donnell), *Graphium euwallaceae* (Twizeyimana, S.C. Lynch & Eskalen), and *Acremonium pembeum* (S. C. Lynch & Eskalen) that commonly cause "fusarium die-back" in many plant species.

The presence of *E. nr. fornicatus* has been reported in host plants throughout the city of Tijuana, Baja California, Mexico (García-Avila et al. 2016). However, the presence of *X. glabratus* has not been reported in Mexico (SENASICA 2017).

In relation to the *X. glabratus* symbiont, *R. lauricola* can be carried by secondary vectors, thus facilitating the spread of the dis-

ease. Among the secondary vectors, *X. volvulus* (Eichhoff) stands out because in laboratory tests it has been demonstrated that it can transmit *R. lauricola* to avocado. Thus, the possibility of this occurring in the field cannot be discarded (Carrillo et al. 2014). Recently, the presence of *X. volvulus* was observed in avocado trees in Colima, Mexico (Castrejón-Antonio et al. 2017), and another report indicates its ability to infest Mexican cedar trees (*Cedrela odorata* L.) and cacao (*Theobroma cacao* L.) (Pérez-De la Cruz et al. 2009; Rangel et al. 2012).

Since Apr 2015, periodic observations have been made in a mango orchard (*Mangifera indica* L., var 'Ataulfo') (Anacardiaceae) in association with avocado (var 'Mendez') in Manzanillo, Colima, Mexico (19.02663°N, 104.09755°W, 23 m asl); the avocados were felled in Mar 2016 after being damaged by ambrosia beetles (Castrejón-Antonio et al. 2017). In Apr 2017, during a survey in the same orchard, mango trees with leaf wilt throughout the canopy, ambrosia beetle galleries and frass on the main trunk were observed (Fig. 1). Pieces of wood were collected and placed in emergence chambers (26 °C, 60% RH, 14:10 [L:D] photoperiod). The insects that emerged from the wood were collected, assembled, labeled, and sent to the Departamento de Entomología y Acarología del Centro Nacional de Referencia Fitosanitaria (CNRF) de la Dirección General de Sanidad Vegetal (SENASICA-SAGARPA) for identification. The beetles were identified using the taxonomic keys described by Wood (1982), as *Hypocryphalus mangiferae* Stebbing and *Xyleborus volvulus* F. (Fig. 2).

The mango tree is known to be a host of *X. volvulus* (Atkinson 2017); however, damage by this beetle had not been reported previously in Mexico. The case described here demonstrates the susceptibility of the mango tree to *X. volvulus*. Furthermore, this particular case also demonstrates that ambrosia beetles can infest 1 host tree species and migrate to other host species trees in a 2-cultivar orchard.

¹Universidad Autónoma de Nuevo León, Facultad de Ciencias Biológicas, Unidad de Formulación de Biológicos, San Nicolás de los Garza, Nuevo León, Mexico; E-mail: jeca4697@gmail.com (J. E. C. A.); patricia.tamezgr@uanl.edu.mx (P. T. G.)

²Centro Nacional de Referencia de Control Biológico (CNRF-DGSV-SENASICA) Tecmán, Colima, Mexico; E-mails: montesinosroberto@yahoo.com.mx (R. M. M.); lucia_06_18@hotmail.com (L. T. F. G.); hugo.arredondo@senasica.gob.mx (H. C. A. B.)

³Programa de Vigilancia Epidemiológica Fitosanitaria, Centro Nacional de Referencia Fitosanitaria, CNRF-DGSV-SENASICA, Tecámac, Estado de Mexico, Mexico; E-mail: bruno_laureano@yahoo.com.mx (B. L. A.)

*Corresponding author; E-mail: montesinosroberto@yahoo.com.mx



Fig. 1. Ambrosia beetle galleries on a mango tree trunk.

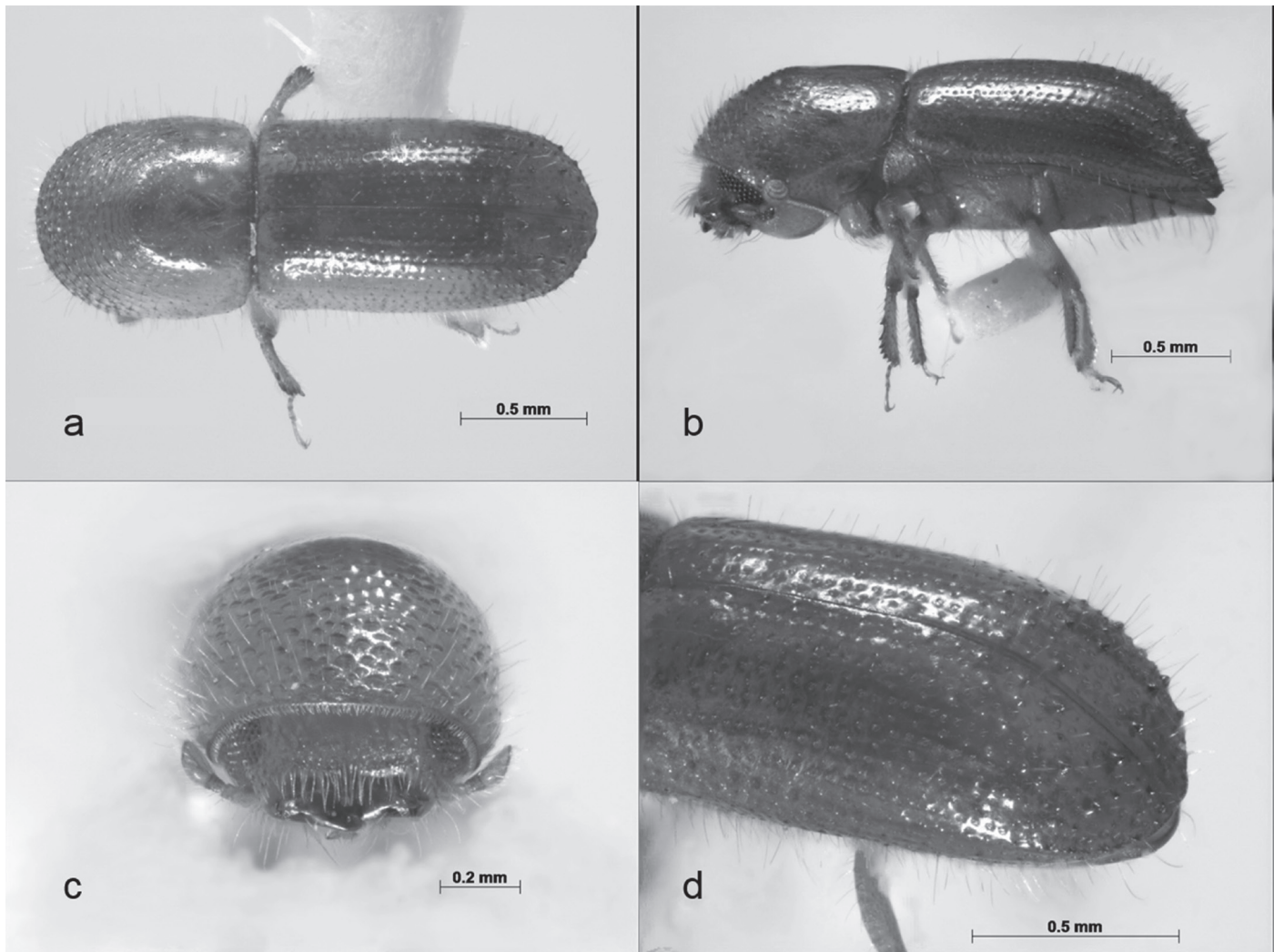


Fig. 2. *Xyleborus volvulus* found infesting a mango tree: (a) dorsal; (b) lateral; (c) frontal; (d) posterolateral.

Summary

Xyleborus volvulus is a polyphagous beetle that can carry *Raffaelea lauricola*, a phytopathogenic fungus that causes laurel wilt disease. In Mexico, the insect has been associated with damage to cedar, cacao, and avocado plantations. Here, we report mango trees infested by *X. volvulus* in a mango orchard with a history of having avocado trees were removed due to infestation by *X. volvulus*.

Key Words: ambrosia beetles; mixed orchard; *Hypocryphalus mangiferae*

Sumario

Xylevorus volvulus es un escarabajo polífago con capacidad de transportar a *Raffaelea lauricola*, el hongo fitopatógeno causante de la Marchitez del Laurel Rojo. En México el insecto se ha asociado con daño en plantaciones de cedro, cacao y aguacate. En este trabajo se reporta la presencia de árboles de mango infestados por *X. volvulus*, en una huerta de mango con antecedentes de haber estado combinado con árboles de aguacate, los cuales fueron derrumbados por presentar infestación por la misma especie de escarabajo.

Palabras Clave: escarabajos ambrosiales; cultivos mixtos; *Hypocryphalus mangiferae*

Acknowledgments

To “Comité Estatal de Sanidad Vegetal del Estado de Colima (CE-SAVECOL)” for providing facilities and access to vegetable gardens; to Ing. Rigoberto González Gómez and Biol. Nallely Acevedo Reyes of “Centro Nacional de Referencia Fitosanitaria (Dirección General de Sanidad Vegetal- SENASICA)” for their support identifying beetle samples; and finally the authors also would like to thank Jr. Spec. Adrian Poloni for suggestions to improve the manuscript.

References Cited

- Atkinson RT. 2017. *Xyleborus volvulus* (Eichhoff 1868). Bark and ambrosia beetles of North and Central America. http://www.barkbeetles.info/regional_chklist_target_species.php?lookUp=2046 (last accessed 30 Oct 2017).
- Carrillo D, Duncan RE, Ploetz JN, Campbell AF, Ploetz RC, Peña JE. 2014. Lateral transfer of a phytopathogenic symbiont among native and exotic ambrosia beetles. *Plant Pathology* 63: 54–62.

- Castrejón-Antonio JE, Montesinos-Matías R, Acevedo-Reyes N, Tamez-Guerra P, Ayala-Zermeño MA, Berlanga-Padilla A, Arredondo-Bernal HC. 2017. Especies de *Xyleborus* (Coleoptera: Curculionidae: Scolytinae) asociados a huertos de aguacate en Colima, México. *Acta Zoológica Mexicana* (n.s.) 33: 146–150.
- Fraedrich SW, Harrington TC, Rabaglia RJ, Ulyshen MD, Mayfiel AE, Hanula JL, Eickwort JM, Miller DR. 2008. A fungal symbiont of the redbay ambrosia beetle causes a lethal wilt in redbay and other Lauraceae in the southeastern United States. *Plant Diseases* 92: 215–224.
- García-Avila CJ, Trujillo-Arriaga FJ, Lopez-Buenfil JA, González-Gómez R, Carrillo D, Cruz LF, Ruíz-Galvan I, Quezada-Salinas A, Acevedo-Reyes N. 2016. First report of *Euwallaceae* nr. *forficatus* (Coleoptera:Curculionidae) in Mexico. *Florida Entomologist* 99: 555–556.
- Harrington T, Fraedrich S, Aghayeva D. 2008. *Raffaelea lauricola* a new ambrosia beetle symbiont and pathogen on the Lauraceae. *Mycotaxon* 104: 399–404.
- Hughes MA, Smith JA, Ploetz RC, Kendra PE, Mayfield AE III, Hanula JL, Hulcr J, Stelinski LL, Cameron S, Riggins JJ, Carrillo D, Rabaglia R, Eickwort J, Pernas T. 2015. Recovery plan for laurel wilt on redbay and other forest species caused by *Raffaelea lauricola* and disseminated by *Xyleborus glabratus*. *Plant Health Progress* 16: 173–210.
- Peña JE, Carrillo D, Duncan R. 2012. Susceptibility of *Persea* spp and other Lauraceae to attack by redbay ambrosia beetle, *Xyleborus glabratus* (Coleoptera: Curculionidae: Scolytinae). *Florida Entomologist* 95: 783–787.
- Pérez-De La Cruz M, Equihua-Martínez A, Romero-Nápoles J, Valdez-Carrasco J, De La Cruz Perez A. 2009. Claves para la identificación de escolítinos (Coleopteros: Curculionidae: Scolytinae) asociados al agroecosistema de cacao en el sur de México. *Boletín del Museo de Entomología la Universidad del Valle* 10: 14–29.
- Pisani C, Ploetz RC, Stover E, Ritenour MA, Scully B. 2015. Laurel wilt in avocado: review of an emerging disease. *International Journal of Plant Biology & Research* 3: 1043–1049.
- Rangel R, Pérez M, Sánchez S, Capello S. 2012. Fluctuación poblacional de *Xyleborus ferrugineus* y *X. affinis* (Coleoptera: Curculionidae) en ecosistemas de Tabasco, México. *Revista de Biología Tropical* 60: 1577–1588.
- SENASICA. 2017. Escarabajo ambrosia del Laurel rojo (*Xyleborus glabratus*). Servicio Nacional de Sanidad, Inocuidad y Calidad Agroalimentaria-Dirección General de Sanidad Vegetal-Programa de Vigilancia Epidemiológica Fitosanitaria. Ciudad de México. Ficha Técnica No. 48, 1ra edición 2014.
- Sobel L, Lucky A, Hulcr J. 2015. An ambrosia beetle *Xyleborus affinis* Eichhoff, 1868 (Insecta: Coleoptera: Curculionidae: Scolytinae). *Entomology and Nematology. UF/IFAS Extension EENY 627*: 1–4.
- Wood SL. 1982. The bark and ambrosia beetles of North and Central America (Coleoptera: Scolytinae). A taxonomic monograph. *Great Basin Naturalis Memoirs* 6: 1–1356.