

## **Dose–response screening of industrial hemp to herbicides commonly used in corn and soybean**

Authors: Ortmeier-Clarke, Haleigh J., Oliveira, Maxwell C., Arneson, Nicholas J., Conley, Shawn P., and Werle, Rodrigo

Source: Weed Technology, 36(2) : 245-252

Published By: Weed Science Society of America

URL: <https://doi.org/10.1017/wet.2021.105>

---

BioOne Complete ([complete.BioOne.org](https://complete.BioOne.org)) is a full-text database of 200 subscribed and open-access titles in the biological, ecological, and environmental sciences published by nonprofit societies, associations, museums, institutions, and presses.



Your use of this PDF, the BioOne Complete website, and all posted and associated content indicates your acceptance of BioOne's Terms of Use, available at [www.bioone.org/terms-of-use](https://www.bioone.org/terms-of-use).

Usage of BioOne Complete content is strictly limited to personal, educational, and non - commercial use. Commercial inquiries or rights and permissions requests should be directed to the individual publisher as copyright holder.

---

BioOne sees sustainable scholarly publishing as an inherently collaborative enterprise connecting authors, nonprofit publishers, academic institutions, research libraries, and research funders in the common goal of maximizing access to critical research.

# Dose–response screening of industrial hemp to herbicides commonly used in corn and soybean

Haleigh J. Ortmeier-Clarke<sup>1</sup> , Maxwell C. Oliveira<sup>2</sup> , Nicholas J. Arneson<sup>3</sup> ,  
Shawn P. Conley<sup>4</sup>  and Rodrigo Werle<sup>5</sup> 

## Research Article

**Cite this article:** Ortmeier-Clarke HJ, Oliveira MC, Arneson NJ, Conley SP, Werle R (2022) Dose–response screening of industrial hemp to herbicides commonly used in corn and soybean. *Weed Technol.* **36**: 245–252. doi: [10.1017/wet.2021.105](https://doi.org/10.1017/wet.2021.105)

Received: 14 September 2021

Revised: 29 November 2021

Accepted: 10 December 2021

First published online: 26 January 2022

### Associate Editor:

Drew Lyon, Washington State University

### Nomenclature:

clopyralid; saflufenacil; corn, *Zea mays* L.; industrial hemp, *Cannabis sativa* L.; soybean, *Glycine max* (L.) Merr.

### Keywords:

Alternative crop; chemical weed control; crop injury; herbicide screening

### Author for correspondence:

Haleigh J. Ortmeier-Clarke, Department of Agronomy, University of Wisconsin–Madison, 1575 Linden Drive, Madison, WI 53706. Email: [ortmeierclar@wisc.edu](mailto:ortmeierclar@wisc.edu)

<sup>1</sup>Graduate Student, Department of Agronomy, University of Wisconsin–Madison, Madison, WI, USA; <sup>2</sup>Research Scientist, Department of Agronomy, University of Wisconsin–Madison, Madison, WI, USA; <sup>3</sup>Outreach Specialist, Department of Agronomy, University of Wisconsin–Madison, Madison, WI, USA; <sup>4</sup>Professor, Department of Agronomy, University of Wisconsin–Madison, Madison, WI, USA and <sup>5</sup>Assistant Professor, Department of Agronomy, University of Wisconsin–Madison, Madison, WI, USA

## Abstract

Recent legalization of industrial hemp in the United States has led to increased interest among stakeholders to produce hemp for grain and fiber. However, owing to the lack of herbicides registered for use in hemp, producers are left with limited weed management strategies. Moreover, much of the agricultural land that could be used to cultivate industrial hemp may be prone to carryover of previously applied residual herbicides or physical drift from herbicides sprayed nearby. Industrial hemp sensitivity to herbicides is not well documented. Dose–response studies were conducted under controlled conditions in Madison, WI, screening two industrial hemp grain cultivars for tolerance to 44 preemergence and postemergence herbicides commonly used in corn and soybean. Treatments consisted of herbicides applied at 0×, 0.125×, 0.25×, 0.50×, 0.75×, 1×, 2×, and 4× the recommended maximum labeled rates based on soil type. Preemergence applications were delivered immediately after planting, whereas postemergence applications took place when hemp plants reached 5 to 10 cm in height. Nontreated plants served as the control and were used to estimate percent biomass reduction; dose–response curves were generated. Biomass reduction was >50% for rates under the suggested label rate for 23 preemergence and 21 postemergence herbicides tested. All herbicides tested resulted in >25% biomass reduction at the 0.125× rate, except for clopyralid applied preemergence and postemergence and saflufenacil applied preemergence. This is concerning, as the label rates are determined for effective weed control and the mitigation of herbicide resistance. Overall, these results indicate that industrial hemp is very sensitive to most herbicides tested. Growers should consider herbicide use history and surrounding crops when determining industrial hemp field selection to prevent significant plant injury due to herbicide carryover and drift. Further research into alternative methods of weed control will be vital to establishing hemp as a dominant crop once again.

## Introduction

Wisconsin began producing industrial hemp (hereinafter referred to as hemp) for research purposes in 1908 (Wright 1918), became the leading U.S. producer in 1920, and remained so until 1957 (LeCloux 2019). Following decades of strict regulation and the prohibition of hemp research and production due to the 1970 Controlled Substances Act, the Agricultural Act of 2014 and the Agriculture Improvement Act of 2018 have made it once again legal to produce hemp in the United States (Agricultural Act of 2014; Agricultural Improvement Act of 2018; Johnson 2014; Schluttenhofer and Yuan 2017, 2019). Hemp has regained interest as a high-value commodity in the United States, which has led to a substantial rise in hemp production (Cherney and Small 2016). After the passing of a state statute in 2018 allowing hemp to be grown under a pilot program, the state of Wisconsin licensed the production of 758 ha in 2018, 1,826 ha in 2019, and 2,203 ha in 2020 (F. Hagerty, personal communication). Before the prohibition of hemp in 1970, many states produced hemp for its strong and long fiber as a common component of ropes, canvases, and paper (Johnson 2014; Karus and Vogt 2004; Small and Marcus 2002). Hemp grain has become a common ingredient of cosmetic and food products (Small and Marcus 2002). Although interest continues to rise, the lack of research on the production of hemp is a barrier to growers. Moreover, best management practices for weed control have not been established.

Weed management is an important aspect of crop production; however, it is understudied in hemp (Sandler et al. 2019). Although it is assumed that hemp can outcompete weeds due to quick canopy closure (Ehrensing 1998; Cherney and Small 2016), hemp is typically planted later than other row crops in Wisconsin (i.e., corn and soybean), allowing early-season weeds to establish prior to planting (Doll 2001). This offers an opportunity for weed control preplant with tillage or herbicide burndown. Previously, research conducted in hemp has identified effective weed management to be necessary to ensure adequate yields (Cole and Zurbo 2008; Sandler

© The Author(s), 2022. Published by Cambridge University Press on behalf of the Weed Science Society of America. This is an Open Access article, distributed under the terms of the Creative Commons Attribution licence (<http://creativecommons.org/licenses/by/4.0/>), which permits unrestricted re-use, distribution and reproduction, provided the original article is properly cited.



et al. 2019; Schluttenhofer and Yuan 2017). Some have observed losses of entire research plots due to weed infestations (Hooks 2018). Mechanical and cultural weed control techniques could be viable options in some production systems and should be further investigated (Sandler et al. 2019). Yield and overall crop quality loss due to weed pressure have been documented in many crops (Lembi and Ross 1985) but have not been quantified in hemp. Years when weeds go unmanaged can lead to large additions to the weed seed bank in the soil, and preventing additions to the seed bank is often the first and most critical step in weed management (Buhler et al. 1997; Cousens and Mortimer 1995; Dekker 1999; Hossain and Begum 2015). A single weedy year can often set growers back several years in weed management (Gallandt 2006).

Chemical control is the most used form of weed management in conventional crop production in modern agriculture (Harker and O'Donovan 2013). While the U.S. Environmental Protection Agency (EPA) and state departments of agriculture have approved short lists of fungicides and insecticides for use in hemp, no registered synthetic herbicides are currently available (U.S. EPA 2021). The use of acetochlor (site of action [SOA] Group 15), metolachlor (SOA 15), and pendimethalin (SOA 3) in hemp is registered in China (Amaducci et al. 2015), while ethalfluralin (SOA 3) and quizalofop-p-ethyl (SOA 1) are registered for hemp in Canada. Few preliminary studies outline hemp's tolerance to herbicides in the United States (Flessner et al. 2020; Johnson and Willenborg 2018; Maxwell 2016; Sosnoskie and Maloney 2021). Although this research provides some insight to hemp's relative sensitivity to a wide range of herbicides, all previous trials were completed at one or two different rates for each active ingredient. Currently no research documents how hemp cultivars may respond to a range of doses of commonly used herbicides.

The lack of information on hemp's response to herbicides is concerning for growers producing hemp. Owing to widespread use of arable land for agricultural production in the United States, hemp may be grown in fields that have previously had herbicides applied, and herbicide carryover is a concern. Moreover, owing to federal regulations restricting research on hemp, it often is not listed on herbicide rotation restrictions and thus must fall under "other crops" (Arneson et al. 2019), leading to the maximum plant-back restriction intervals. Hemp produced in regions that produce other crops, such as corn and soybean, may be at risk of injury from herbicide drift given the reliance on chemical weed control in these systems. The increase in number of hemp hectares paired with very little information on herbicide use in hemp production warrants more investigation of hemp's response to PRE and POST herbicide applications.

The objective of this research was to investigate the tolerance of two grain hemp cultivars to herbicides commonly used PRE and POST in corn and soybean production. The hypotheses were that (1) both hemp cultivars would be highly sensitive to the herbicides evaluated and (2) both hemp cultivars would exhibit increased sensitivity with increasing herbicide dose. The results of this study may guide future research into the viability of registering herbicides for use in hemp. These results will also be useful in supporting recommendations for hemp as a rotational crop (i.e., carryover concerns for herbicides with soil residual activity) and sensitivity to herbicide drift (i.e., exposure to low rates of herbicides with foliar activity).

## Materials and Methods

### Plant Material and Growing Conditions

Dose-response experiments were conducted from July through November 2019 to investigate tolerance of two dioecious grain

hemp cultivars to PRE and POST herbicides commonly used with corn and soybean (Table 1). Experiments were conducted at the Walnut Street Greenhouse (43.075240°N, -89.423440°W), University of Wisconsin-Madison, Madison, WI. The two cultivars evaluated were X-59 (Legacy Hemp LLC, Prescott, WI, USA) and CRS-1 (Hemp Genetics International, Saskatoon, SK, Canada). Owing to limited availability, these dioecious cultivars were selected because of their suitability for production in the U.S. upper Midwest (B. Parr, personal communication). Greenhouse conditions were set to a 16-h photoperiod using high-pressure sodium lights (650 to 670 nm; Sun Systems, Vancouver, WA, USA) and maintained at diurnal/nocturnal air temperatures of 28/20 °C. Environmental conditions were monitored for the duration of the experiments with a WatchDog® A150 logger (Spectrum Technologies, Aurora, IL, USA).

Experimental units for preemergence-applied herbicides consisted of 606 cm<sup>3</sup> square pots (HC Companies, Twinsburg, OH, USA) filled with field soil (silt loam soil [21% sand, 57% silt, 22% clay], 2.6% organic matter, and pH of 6.9). Soil originated from the West Madison Agricultural Research Station (43.060482°N, -89.531853°W) and was selected as a representative soil type of Wisconsin's agricultural landscape. Six hemp seeds were planted in each pot at 1.3 cm depth, simulating a planting density of 34 kg ha<sup>-1</sup>, within 12 h before spraying to avoid germination prior to PRE herbicide application. Immediately before spraying, pots were watered until saturated to ensure activation of the PRE herbicides and then watered daily to field capacity.

Experimental units for postemergence-applied herbicides consisted of 656 cm<sup>3</sup> pots (Stuewe and Sons Inc., Tangent, OR, USA) filled with Mycorrhizae BX potting mix (79% to 87% sphagnum peat moss, 10% to 14% vermiculite; Pro-Mix®, Quakertown, PA, USA). Cones were watered to saturation and then planted with six seeds at 1.25-cm depth and thinned to 1 plant per cone within 48 h prior to herbicide application. Cones were watered to field capacity daily and fertilized weekly (Peters 20-10-20 Peat-Lite Special; ICL Specialty Fertilizers, Summerville, SC, USA) until herbicide application. After treatment, cones were watered daily.

### Experiment Background and Design

Treatments consisted of 23 PRE and 21 POST herbicides applied at seven rates (0.125×, 0.25×, 0.5×, 0.75×, 1×, 2×, and 4×) plus a non-treated control (NTC), totaling 161 PRE and 154 POST treatments (Table 1). The 1× rate herein was extrapolated from the respective product label recommendations for maximum labeled rate for corn or soybean (and based on a silt loam soil for PRE treatments). Experiments were conducted in a completely randomized design with three replications and were repeated twice in time.

### Herbicide Application

All herbicide applications, except for the synthetic auxins (SOA 4), were made with a single-nozzle research track sprayer (DeVries Manufacturing Inc., Hollandale, MN, USA) equipped with an A19502EVS (TeeJet® Technologies, Wheaton, IL, USA) nozzle calibrated to deliver 140 L ha<sup>-1</sup> at 275 kPa at a speed of 3.9 km h<sup>-1</sup>. Experimental units were positioned 38 cm below the nozzle, and treatment applications were made sequentially. Adjuvants were not used for POST applications to allow PRE and POST applications to be made simultaneously. SOA 4 (dicamba, clopyralid, and 2,4-D) herbicides were sprayed at an off-site location using a CO<sub>2</sub>-pressurized backpack sprayer with a 2-m handheld spray boom with TTI110015 (TeeJet® Technologies) nozzles at 50.8-cm spacing.

**Table 1.** Treatments evaluated in dose-response experiments including active ingredient, site of action number, 1× rate, manufacturer, location, and if it was preemergence and/or postemergence applied.<sup>a,b</sup>

Active ingredient	Trade name	SOA	1× rate	Manufacturer <sup>c</sup>	PRE	POST
			g ai/ae ha <sup>-1</sup>			
Clethodim	Select Max <sup>®</sup>	1	76.4	Valent		•
Sethoxydim	Poast <sup>®</sup>	1	315	BASF		•
Chloransulam-methyl	FirstRate <sup>®</sup>	2	35.3	Corteva Agrisciences	•	•
Chlorimuron-ethyl	Classic <sup>®</sup>	2	52.5	Corteva Agrisciences	•	•
Imazethapyr	Pursuit <sup>®</sup>	2	70	BASF	•	•
Rimsulfuron	Resolve <sup>®</sup> SG	2	22	Corteva Agrisciences	•	•
Pendimethalin	Prowl <sup>®</sup> H2O	3	2,130	BASF	•	
2,4-D	Enlist <sup>™</sup> One	4	800	Corteva Agrisciences	•	•
Clpyralid	Stinger <sup>®</sup>	4	158	Corteva Agrisciences	•	•
Dicamba	Xtendimax <sup>®</sup>	4	560	Bayer Crop Science	•	•
Atrazine	Aatrex <sup>®</sup> 4L	5	1,680	Syngenta	•	•
Metribuzin	Tricor <sup>®</sup> DF	5	563	UPL	•	
Bentazon	Basagran <sup>®</sup>	6	1,120	BASF		•
Bromoxynil	Buctril <sup>®</sup>	6	420	Bayer Crop Science		•
Glyphosate	Roundup PowerMAX <sup>®</sup>	9	1,260	Bayer Crop Science		•
Glufosinate	Liberty <sup>®</sup>	10	656	BASF		•
Flumioxazin	Valor <sup>®</sup> SX	14	107	Valent	•	
Fluthiacet-methyl	Cadet <sup>®</sup>	14	7.2	FMC Corporation		•
Fomesafen	Flexstar <sup>®</sup>	14	263	Syngenta	•	•
Lactofen	Cobra <sup>®</sup>	14	220	Valent		•
Saflufenacil	Sharpen <sup>®</sup>	14	25	BASF	•	
Sulfentrazone	Spartan <sup>®</sup> 4F	14	280	FMC Corporation	•	
Nonencapsulated acetochlor	Harness <sup>®</sup>	15	1,470	Bayer Crop Science	•	
Encapsulated acetochlor	Warrant <sup>®</sup>	15	1,260	Bayer Crop Science	•	
Dimethenamid-p	Outlook <sup>®</sup>	15	920	BASF	•	
Pyroxasulfone	Zidua <sup>®</sup> SC	15	119	BASF	•	
S-metolachlor	Dual II Magnum <sup>®</sup>	15	1,790	Syngenta	•	
Isoxaflutole	Balance <sup>®</sup> Flexx	27	79	Bayer Crop Science	•	•
Mesotrione	Callisto <sup>®</sup>	27	105	Syngenta	•	•
Tembotrione	Laudis <sup>®</sup>	27	92	Bayer Crop Science	•	•
Topramezone	Armezon <sup>®</sup>	27	18.4	BASF	•	•

<sup>a</sup>Abbreviations: ae, acid equivalent; ai, active ingredient; SOA, site of action.

<sup>b</sup>Herbicides are listed by site of action number.

<sup>c</sup>Manufacturer locations: BASF, Durham, NC; Bayer Crop Science, St. Louis, MO; Corteva Agrisciences, Indianapolis, IN; FMC Corporation, Philadelphia, PA; Syngenta, Greensboro, NC; UPL, King of Prussia, PA; Valent, Walnut Creek, CA.

The sprayer was calibrated to deliver 140 L ha<sup>-1</sup> carrier volume at 275 kPa at a walking speed of 4.8 km h<sup>-1</sup>. Herbicide applications for PRE-applied herbicides were made within 24 h after planting, and POST applications were made when hemp plants reached 5 to 10 cm in height.

At 28 days after treatment (DAT), plants within each pot in the PRE experiment were enumerated and recorded, and aboveground biomass was harvested. At 21 DAT, aboveground biomass was harvested for all experimental units within the POST experiment. All biomass was forced-air-dried at 52 C until constant weight before weighing. Biomass data are reported as percent biomass reduction and were calculated as

$$\% \text{ biomass reduction} = [(NTC - B)/NTC] * 100$$

where NTC is the mean biomass (g) of the nontreated control for each respective cultivar and *B* is the biomass (g) of the experimental unit of interest.

### Statistical Analyses

Dose-response curves were generated for percent biomass reduction to each hemp cultivar within herbicides in R statistical software (R Development Core Team 2021) using the DRC (Ritz et al. 2015) package. Data from the two experimental runs were combined (i.e., replications and experimental runs considered as random effects). The model selection function *mselect tool* was

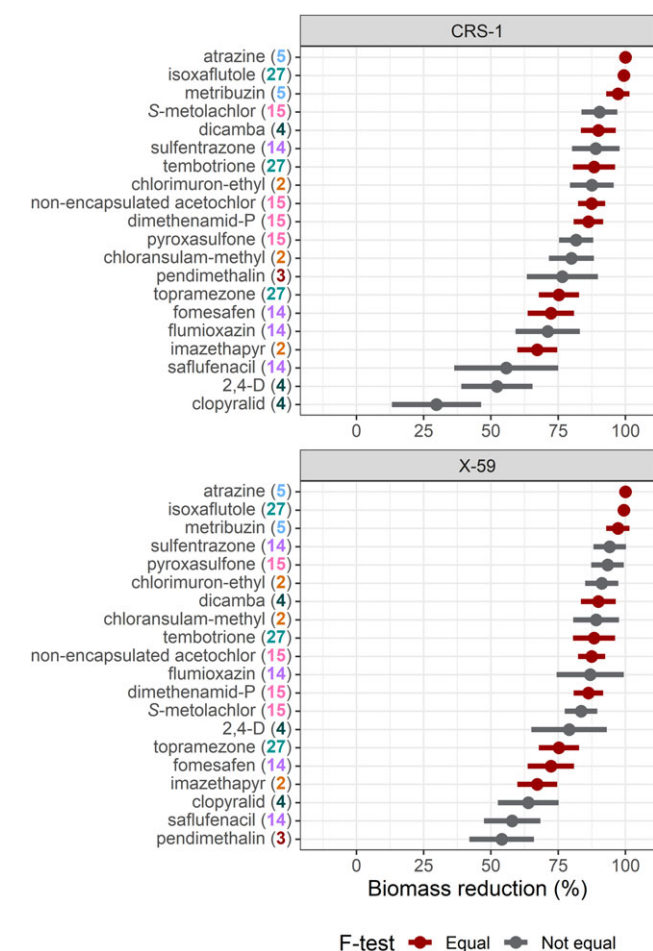
used to compare models, and the three-parameter log-logistic function was selected as the best-fit model based on Akaike's information criterion (data not shown). In the three-parameter log-logistic function, the lower limit was set to 0 and the upper limit to 100, as biomass reduction cannot be greater than 100%. The response of the hemp cultivars was compared within each herbicide treatment through the variance ratio or F-test using the following equation (Lindquist et al. 1996; Oliveira et al. 2018):

$$\text{variance ratio}_i = [(RSS_i - RSS_1)/(df_i - df_1)]/(RSS_1/df_1)$$

where *RSS<sub>i</sub>* represents the minimized residual sum squares of the reduced model, *RSS<sub>1</sub>* represents the minimized residual sum squares of the full model, *df<sub>i</sub>* represents the degrees of freedom of the reduced model, and *df<sub>1</sub>* represents the degrees of freedom of the full model. For each herbicide, two nested models were fitted: a full model with separated values for each hemp cultivar and a reduced model with pooled values of two hemp cultivars. The F-test was performed with the *anova* function from the DRC package; if the P-value of the F-test is greater than 0.05, we fail to reject the null hypothesis, and a reduced model should be used (e.g., one model for both cultivars); otherwise, model parameters for each cultivar were estimated indicating differential cultivar response within a particular herbicide treatment (Oliveira et al. 2018).

The absolute effective doses (EDs) to achieve 10%, 50%, and 90% biomass reduction were estimated from the dose-response





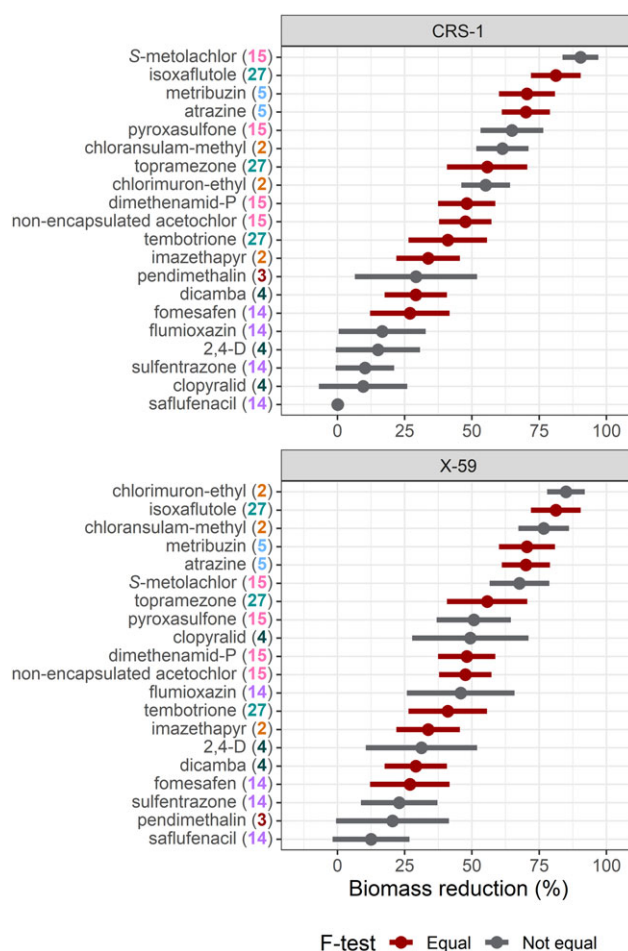
**Figure 1.** Percent hemp biomass reduction as a result of a 1x application of each respective PRE herbicide for two hemp cultivars: CRS-1 (top) and X-59 (bottom). Points represent the percent biomass reduction caused by the 1x rate of each respective herbicide; bars represent the upper and lower confidence intervals. The color of the bar represents the F-test value. Red points mean the cultivars are equal, whereas gray points mean the cultivars are not equal. Active ingredients are arranged from most injurious to least injurious. Numbers next to each active ingredient represent the site of action group number.

curves using the *ED* function in the *DRC* package. The percent biomass reduction that occurred when the 0.125x and 1x rates of each herbicide were applied to each cultivar were estimated using the *predict model* function of the *DRC* package.

## Results and Discussion

### Preemergence Herbicides

Greater than 75% biomass reduction was observed for most herbicides, even at the lowest rates evaluated (Figures 1 and 2). Dose-response models could not be fitted (i.e., failed to converge) to the results for rimsulfuron (SOA 2), encapsulated acetochlor (SOA 15), and mesotrione (SOA 27) due to significant biomass reduction (>65%) at the lowest rate evaluated (0.125x; data not shown). Mesotrione has previously been reported as being significantly injurious to hemp, causing between 88% and 95% phytotoxicity 28 DAT at a rate of 0.39 L ha<sup>-1</sup> (Maxwell 2016). Dose-response models could be fitted for the remaining 20 PRE herbicide treatments evaluated. Cultivars responded similarly for 10 out of 20 PRE herbicides (reduced model) that could be analyzed



**Figure 2.** Percent hemp biomass reduction as a result of a 0.125x application of each respective PRE herbicide for two hemp cultivars: CRS-1 (top) and X-59 (bottom). Points represent the percent biomass reduction caused by the 0.125x rate of each respective herbicide; bars represent the upper and lower confidence intervals. The color of the bar represents the F-test value. Red points mean the cultivars are equal, whereas gray points mean the cultivars are not equal. Active ingredients are arranged from most injurious to least injurious. Numbers next to each active ingredient represent the site of action group number.

(Table 2). These herbicides were imazethapyr (SOA 2), dicamba (SOA 4), atrazine (SOA 5), metribuzin (SOA 5), fomesafen (SOA 14), nonencapsulated acetochlor (SOA 15), dimethenamid-p (SOA 15), isoxaflutole (SOA 27), tembotrione (SOA 27), and topramezone (SOA 27).

All 10 of these herbicides resulted in >50% biomass reduction at the 1x labeled rate, with dicamba, atrazine, metribuzin, nonencapsulated acetochlor, dimethenamid-p, isoxaflutole, and tembotrione causing >75% biomass reduction at the 1x labeled rate (Figure 1). Amaducci et al. (2015) advised against planting hemp in years following maize treated with atrazine. Metribuzin was found to reduce stand and plant height and to cause >70% biomass reduction in greenhouse applications (Flessner et al. 2020). Fomesafen has been found to cause significant biomass reduction and highly variable injury (Flessner et al. 2020; Maxwell 2016). Flessner et al. (2020) found that encapsulated acetochlor did not reduce stand or height in greenhouse trials, but they did not test nonencapsulated acetochlor. Acetochlor is also recommended at varying rates for weed control in hemp in China (Amaducci et al. 2015), but the recommended formulation is unknown. Flessner et al. (2020) did not

**Table 2.** Effective dose to cause 10%, 50%, and 90% biomass reduction for preemergence application.<sup>a,b</sup>

Active ingredient	SOA	1× rate	P-value	ED <sub>10</sub>		ED <sub>50</sub>		ED <sub>90</sub>	
				CRS-1	X-59	CRS-1	X-59	CRS-1	X-59
		g ai/ae ha <sup>-1</sup>				g ai/ae ha <sup>-1</sup> (±SE)			
Chloransulam-methyl	2	35.3	0.035	0.02 (±0.04)	0.004 (±0.02)	1.9 (±1.3)	0.3 (±0.7)	>141	42.9 (±44.6)
Chlorimuron-ethyl	2	52.5	0.000	0.4 (±0.3)	0.00001 (± <0.0001)	5.5 (±1.3)	0.02 (±0.04)	70.7 (±34.7)	32.8 (±39)
Imazethapyr	2	70	0.397		1.0 (±0.8)		24.2 (±5.8)		>280
Pendimethalin	3	2,130	0.041	71.1 (±69.4)	84.1 (±111.5)	960.1 (±253)	1,709 (±588.8)	>8,500	>8,500
2,4-D	4	800	0.014	58.8 (±51.1)	25.1 (±21.9)	722.3 (±217.4)	217 (±69.1)	>3,200	1,872.9 (±1,208.7)
Clopyralid	4	158	0.001	21.7 (30.1)	0.01 (0.07)	565.4 (234.4)	21.8 (32.0)	>630	>630
Dicamba	4	560	0.105		29.0 (±9.3)		127.7 (±16.9)		562.5 (±137.1)
Atrazine	5	1,680	0.631		103.1 (±52.8)		172.2 (±26.6)		287.6 (±64.2)
Metribuzin	5	563	0.271		6.5 (±6.0)		35.6 (±12.3)		196.3 (±58.1)
Flumioxazin	14	107	0.008	8.0 (±4.9)	1.6 (±1.8)	50.3 (±11.1)	15.4 (±5.8)	317.3 (±151.9)	146.2 (±97.7)
Fomesafen	14	263	0.151		9.3 (±6.2)		95.2 (±21.6)		977.1 (±446.6)
Saflufenacil	14	25	0.028	13.3 (±3.1)	2.4 (±1.6)	23.5 (±2.2)	18.6 (±3.9)	41.8 (±12)	>100
Sulfentrazone	14	280	0.046	34.6 (±10.2)	20.9 (±6.4)	101 (±11.6)	65.7 (±8.6)	295.21 (±68.5)	206.9 (±48.4)
Nonencapsulated acetochlor	15	1,470	0.262		21.7 (±11.0)		203.6 (±38.4)		1,911.5 (±519.3)
Dimethenamid-p	15	920	0.785		11.5 (±6.9)		125.1 (±27.8)		1,360.6 (±424.9)
Pyroxasulfone	15	119	0.026	0.02 (±0.06)	2.6 (±1.5)	3.5 (±3.8)	14.8 (±3.3)	>475	83.48 (±26.4)
S-metolachlor	15	1,790	0.002	61.5 (±25.9)	0.2 (±0.7)	326.7 (±48.3)	38.9 (±46.7)	1,736.6 (±501.4)	6,959.2 (±6,678.7)
Isoxaflutole	27	79	0.620		1.3 (±1.2)		4.4 (±2.0)		15.1 (±2.7)
Tembotrione	27	92	0.617		2.5 (±1.4)		16.6 (±3.5)		106.6 (±37.7)
Topramezone	27	18.4	0.141		0.005 (±0.01)		1.1 (±1.1)		>73.6

<sup>a</sup>Abbreviations: ae, acid equivalent; ai, active ingredient; ED, estimated dose to reach 10%, 50%, or 90% biomass reduction; SE, standard error; SOA, site of action.

<sup>b</sup>The use of > indicates that the estimated dose was above the range of doses tested.

find dimethenamid-p to cause reduction of stand or plant height in greenhouse applications, but it does have a plant-back interval of 9 mo, according to the label (Arneson et al. 2019). Isoxaflutole has been reported to cause severe injury in PRE applications (Knezevic et al. 2020).

The remaining 10 herbicide treatments evoked different responses between the two cultivars tested. These herbicides were chloransulam-methyl (SOA 2), chlorimuron-ethyl (SOA 2), pendimethalin (SOA 3), 2,4-D (SOA 4), clopyralid (SOA 4), flumioxazin (SOA 14), saflufenacil (SOA 14), sulfentrazone (SOA 14), pyroxasulfone (SOA 15), and S-metolachlor (SOA 15). Saflufenacil caused >50% biomass reduction at the 1× label rate in both cultivars, and chloransulam-methyl, chlorimuron-ethyl, sulfentrazone, pyroxasulfone, and S-metolachlor all caused >75% biomass reduction in both cultivars at the 1× label rate (Figure 1).

Saflufenacil was shown to be relatively safe to use as a soil-applied chemical (Knezevic et al. 2020). Flessner et al. (2020) found chlorimuron-ethyl not to reduce stand but to reduce plant height and cause greater than 50% injury in greenhouse applications. Yet, chlorimuron-ethyl did not reduce yield in their field applications (Flessner et al. 2020). However, according to its label, chlorimuron-ethyl has a plant-back restriction of 30 mo (Arneson et al. 2019). Flessner et al. (2020) found sulfentrazone to be relatively safe under greenhouse conditions. Maxwell (2016) showed variable yields when pyroxasulfone was applied PRE, but Flessner et al. (2020) saw >70% biomass reduction under

greenhouse conditions. S-metolachlor is recommended at varying rates in China (Amaducci et al. 2015) and was found to be relatively safe in both greenhouse and field applications in various studies (Flessner et al. 2020; Knezevic et al. 2020; Maxwell 2016).

Pendimethalin resulted in 77% biomass reduction in the CRS-1 cultivar and 54% in the X-59 cultivar (Figure 1). Pendimethalin is recommended for weed control in China (Amaducci et al. 2015) and has shown to be safe for PRE application in several hemp studies conducted in the United States (Flessner et al. 2020; Knezevic et al. 2020; Maxwell 2016). At the 1× label rate, 2,4-D resulted in 52% and 79% biomass reduction in the CRS-1 and X-59 cultivar, respectively (Figure 1). At the 1× label rate, clopyralid resulted in 30% biomass reduction in the CRS-1 cultivar but in 64% biomass reduction in the X-59 cultivar (Figure 1). Clopyralid was found to cause little to no injury when applied PRE (Knezevic et al. 2020). Flumioxazin caused 71% and 87% biomass reduction at the 1× label rate in CRS-1 and X-59, respectively (Figure 1). Flumioxazin has been found to cause injury varying from severe (Knezevic et al. 2020) to appearing relatively safe under greenhouse conditions (Flessner et al. 2020).

At the 0.125× rate, imazethapyr, dicamba, fomesafen, encapsulated acetochlor, dimethenamid-p, and tembotrione caused <50% biomass reduction (Figure 2). Atrazine, metribuzin, topramezone, and pyroxasulfone resulted in >50% biomass reduction and isoxaflutole resulted in >75% biomass reduction at the 0.125× rate. Saflufenacil and sulfentrazone caused <25% biomass reduction in both cultivars at the 0.125× rate. Chloransulam-methyl and

**Table 3.** Effective dose to cause 10%, 50%, and 90% biomass reduction for postemergence application.<sup>a,b</sup>

Active ingredient	SOA	1× rate	P-value	ED <sub>10</sub>		ED <sub>50</sub>		ED <sub>90</sub>	
				CRS-1	X-59	CRS-1	X-59	CRS-1	X-59
		g ai/ae ha <sup>-1</sup>		g ai/ae ha <sup>-1</sup> (±SE)					
Clethodim	1	76.4	0.280	7.6 (±9.6)		>306		>306	
Chloransulam-methyl	2	35.3	0.001	0.1 (±0.1)	0.002 (±0.008)	1.8 (±0.6)	0.2 (±0.3)	31.4 (±8.7)	15 (±5.3)
Chlorimuron-ethyl	2	52.5	0.115	0.02 (±0.03)		0.6 (±0.5)		25.1 (±6.5)	
Imazethapyr	2	70	0.151	1.5 (±0.5)		15.4 (±1.8)		160.3 (±39.6)	
Rimsulfuron	2	22	0.000	0.08 (±0.08)	0.02 (±0.06)	2.3 (±0.8)	0.5 (±0.6)	80.9 (±40.9)	12.3 (±6.3)
2,4-D	4	800	0.064	40.3 (±11.1)		79.7 (±6.8)		157.8 (±20.5)	
Clopyralid	4	158	0.056	34.3 (±19.8)		>630		>630	
Dicamba	4	560	0.225	20.3 (±4.9)		122.6 (±11.0)		740.1 (±127.9)	
Atrazine	5	1,680	0.472	7.1 (±9.2)		46.4 (±31.1)		303.1 (±57.5)	
Bentazon	6	1,120	0.895	23.2 (±11.5)		80.2 (±15.8)		277 (±43.9)	
Glufosinate	9	656	0.115	21.0 (±10.2)		47.3 (±10.1)		106.5 (±9.3)	
Fluthiacet-methyl	14	7.2	0.580	0.01 (±0.02)		0.4 (±0.2)		13.52 (±5.4)	
Fomesafen	14	263	0.001	7.4 (±3.3)	1.6 (±1.8)	50.2 (±8.8)	15.8 (±7.5)	341.2 (±96.6)	158.4 (±60.7)
Lactofen	14	220	0.004	0.3 (±0.4)	4.8 (±2.1)	11.3 (±6.0)	41.7 (±6.7)	415.7 (±200.7)	365.3 (±102.9)
Isoxaflutole	27	79	0.001	0.5 (±0.3)	2.2 (±1.7)	4.2 (±1.2)	5.5 (±1.9)	38.3 (±7.6)	13.9 (±2.4)
Mesotrione	27	105	0.516	0.005 (±0.03)		0.1 (±0.4)		3.2 (±3.9)	
Tembotrione	27	92	0.001	0.2 (±0.3)	0.002 (±0.03)	2.0 (±1.3)	0.07 (±0.4)	19.2 (±3.4)	1.7 (±4.7)

<sup>a</sup>Abbreviations: ae, acid equivalent; ai, active ingredient; ED, estimated dose to reach 10%, 50%, or 90% biomass reduction; SE, standard error; SOA, site of action.

<sup>b</sup>The use of > indicates that the estimated dose was above the range of doses tested.

chlorimuron-ethyl both resulted in >50% biomass reduction in the CRS-1 cultivar and in >75% biomass reduction in the X-59 cultivar at the 0.125× rate. Pendimethalin caused 29% and 20% biomass reduction at the 0.125× rate in the CRS-1 and X-59 cultivar, respectively. At the 0.125× rate, 2,4-D, clopyralid, and flumioxazin all resulted in <25% biomass reduction in the CRS-1 cultivar, while causing 31%, 49%, and 46% biomass reduction, respectively, in the X-59 cultivar. Pyroxasulfone caused >75% biomass reduction in the CRS-1 cultivar and >50% biomass reduction in the X-59 cultivar at the 0.125× rate.

Varietal differences in herbicide tolerance have been reported in many crops, including pinto bean (*Phaseolus vulgaris* L.; Bauer et al. 1995), soybean (Hardcastle 1974), and cassava (*Manihot esculenta* Crantz; Hummel et al. 2018), among others. However, only two hemp cultivars were tested, and there is no apparent pattern in these results to suggest if one cultivar is more sensitive to commonly used herbicides than the other. The difference in response between the two cultivars for some herbicides tested may be due to inherent genetic variation.

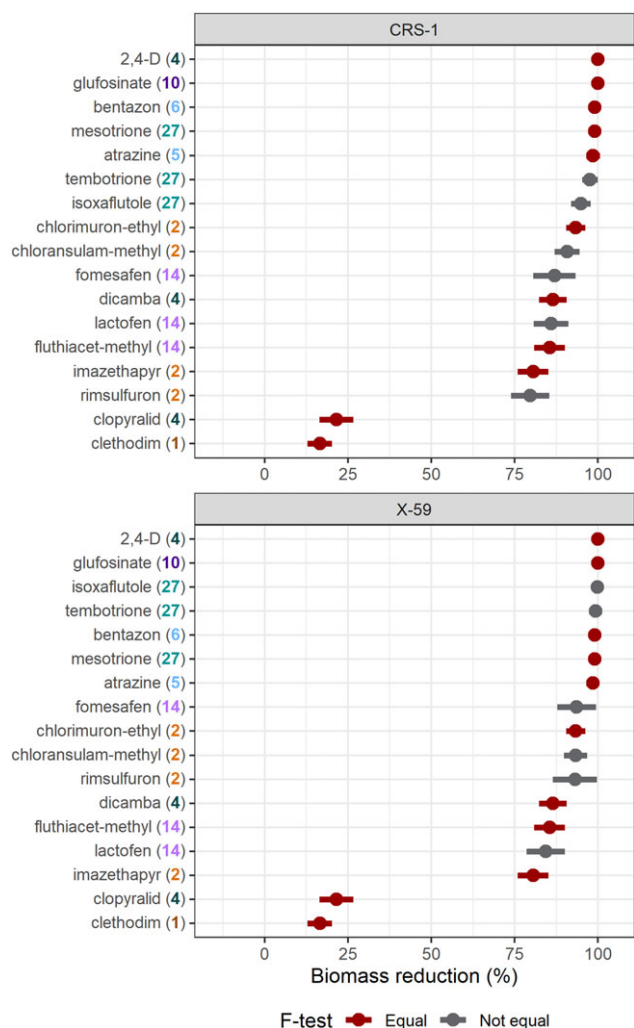
Overall, most herbicides applied PRE caused >50% biomass reduction at the recommended application rate. Clopyralid was the only herbicide tested to cause <50% biomass reduction at both the 0.125× and 1× rates. Saflufenacil is labeled for burndown with limited soil residual weed control, depending on application rate, in several crops in the United States, including chickpea (*Cicer arietinum* L.), corn, cotton (*Gossypium hirsutum* L.), field pea (*Pisum sativum* L.), small grains, grain sorghum [*Sorghum bicolor* (L.) Moench ssp. *bicolor*], and soybean (Anonymous 2020). Clopyralid and saflufenacil represent potential preplant burndown and PRE options that should be further investigated under field conditions for potential future use in commercial hemp production.

### POST Herbicides

POST herbicides were sprayed when hemp plants were at 5 to 10 cm height (two to four leaves), simulating an application to a crop at early developmental stages, thus potentially more susceptible to herbicides compared to a later application onto a more developed

crop. Previous studies applied herbicides at later growth stages when plants were in the 25 to 30 cm range (Flessner et al. 2020; Maxwell 2016). As with the PRE herbicides, some POST herbicides caused significant injury to hemp at the lowest rate tested (Figures 3 and 4). Because of extreme sensitivity, models could not be fit for the POST applications of glyphosate (SOA 9) and topramezone (SOA 27). This is likely due to the high injury at low rates, resulting in data that could not follow a sigmoid curve. Sosnoskie and Maloney (2021) reported approximately 93% biomass reduction due to 1× POST applications of glyphosate. Owing to irregularity in the biomass of sethoxydim- (SOA 1) and bromoxynil- (SOA 6) treated cones, a model could not be fitted for those data either. Bromoxynil was shown to be relatively safe for POST use in various studies (Flessner et al. 2020; Maxwell 2016; Sosnoskie and Maloney 2021), and Flessner et al. (2020) also found sethoxydim to be safe for use in hemp in greenhouse and field studies. The differences in our results compared to previous studies could be due to the testing of different cultivars. Previous research in other crops has shown that it is common to have differences in herbicide tolerance among cultivars within a crop (Bauer et al. 1995; Hardcastle 1974; Hummel et al. 2018).

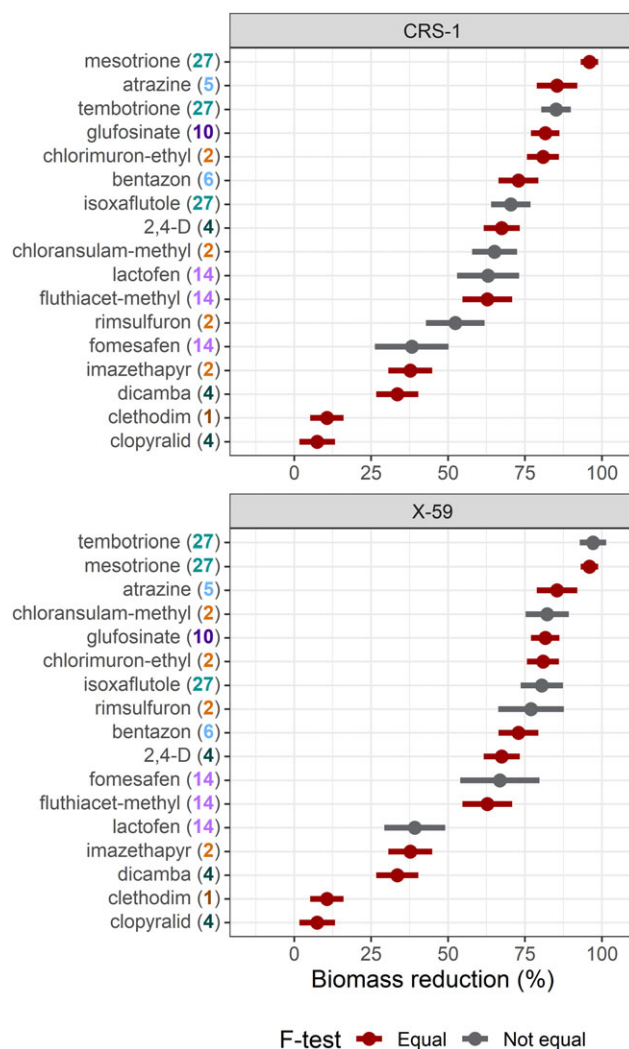
Cultivars responded similarly for 11 out of the 17 POST-applied herbicides that could be analyzed (Table 3). These herbicides were clethodim (SOA 1), chlorimuron-ethyl (SOA 2), imazethapyr (SOA 2), 2,4-D (SOA 4), clopyralid (SOA 4), dicamba (SOA 4), atrazine (SOA 5), bentazon (SOA 6), glufosinate (SOA 10), fluthiacet-methyl (SOA 14), and mesotrione (SOA 27). Clethodim and clopyralid were the only two herbicides not to cause >75% biomass reduction at the 1× label rate, with clethodim causing 16.6% and clopyralid causing 21.5% biomass reduction (Figure 3). Chlorimuron-ethyl has previously been found to cause varying biomass reduction (40% to 56%) and reduced height (25% to 46%) in greenhouse studies (Flessner et al. 2020). Imazethapyr and bentazon were also found by Flessner et al. (2020) to cause varying biomass reduction (40% to 56%) but not to reduce plant height. Sosnoskie and Maloney (2021) also reported high biomass reduction due to bentazon application, with treated biomass being only 7% that of the nontreated control. Flessner et al. (2020) found POST applications of clopyralid to be safe for application on hemp



**Figure 3.** Percent hemp biomass reduction as a result of a 1x application of each respective POST herbicide for two hemp cultivars: CRS-1 (top) and X-59 (bottom). Points represent the percent biomass reduction caused by the 1x rate of each respective herbicide; bars represent the upper and lower confidence intervals. The color of the bar represents the F-test value. Red points mean the cultivars are equal, whereas gray points mean the cultivars are not equal. Active ingredients are arranged from most injurious to least injurious. Numbers next to each active ingredient represent the site of action group number.

in both greenhouse and field studies. Sosnoskie and Maloney (2021) reported clopyralid to cause approximately 25% biomass reduction when applied POST.

The remaining POST herbicides resulted in different responses from the two cultivars tested. These herbicides include chloransulam-methyl (SOA 2), rimsulfuron (SOA 2), fomesafen (SOA 14), lactofen (SOA 14), isoxaflutole (SOA 27), and tembotrione (SOA 27). All resulted in >75% biomass reduction in both cultivars at their respective label rates (Figure 3). Rimsulfuron has been shown to be injurious to hemp in POST applications, causing 16% to 54% biomass reduction in the field (Maxwell 2016) and approximately 70% biomass reduction in the greenhouse (Sosnoskie and Maloney 2021). Flessner et al. (2020) found fomesafen to be relatively safe for POST use on hemp in the greenhouse at a rate of 200 g ai ha<sup>-1</sup>. However, Sosnoskie and Maloney (2021) found that biomass of POST-applied fomesafen-treated hemp was only 25% that of the control.



**Figure 4.** Percent hemp biomass reduction as a result of a 0.125x application of each respective POST herbicide for two hemp cultivars: CRS-1 (top) and X-59 (bottom). Points represent the percent biomass reduction caused by the 0.125x rate of each respective herbicide; bars represent the upper and lower confidence intervals. The color of the bar represents the F-test value. Red points mean the cultivars are equal, whereas gray points mean the cultivars are not equal. Active ingredients are arranged from most injurious to least injurious. Numbers next to each active ingredient represent the site of action group number.

Clethodim and clopyralid both caused <25% biomass reduction at the 0.125x label rate, and imazethapyr and dicamba resulted in between 25% and 50% biomass reduction (Figure 4). At the 0.125x label rate, 2,4-D, bentazon, and fluthiacet-methyl caused >50% biomass reduction and chlorimuron-ethyl, atrazine, glufosinate, and mesotrione caused >75% biomass reduction (Figure 4). Fomesafen resulted in 38% biomass reduction in the CRS-1 cultivar at the 0.125x label rate and 67% biomass reduction in the X-59 cultivar. At the 0.125x label rate, lactofen caused >50% biomass reduction in the CRS-1 cultivar but only 39% biomass reduction in the X-59 cultivar. Chloransulam-methyl, rimsulfuron, and isoxaflutole all resulted in >50% reduction at the 0.125x label rate in the CRS-1 cultivar and >75% biomass reduction in the X-59 cultivar. At the 0.125x label rate, tembotrione caused >75% biomass reduction in both cultivars (Figure 4).

Overall, only two herbicides evaluated POST did not cause >50% biomass reduction: clethodim and clopyralid. All other



herbicides were very injurious to hemp plants treated at the 5 to 10 cm height. Because even small doses of all POST herbicides tested (except for clopyralid and clethodim) caused significant plant injury or death (25% to 98%), drift and tank contamination should be of concern to hemp growers. Extreme caution should be taken when applying these herbicides near hemp fields.

Our results indicate that hemp is highly sensitive to most of the PRE and POST herbicides tested at the 1× label rates, indicating that at these effective rates for weed control, few candidate products would likely become labeled for hemp. Conversely, management of volunteer hemp in corn and soybean should not be a concern. Of the PRE herbicides tested, clopyralid and saflufenacil are potential candidates for registration on hemp and should be further evaluated under field conditions. Of the POST herbicides tested, clethodim and clopyralid are candidates for potential registration, warranting further evaluation under field conditions. All other POST herbicides tested resulted in >75% biomass reduction at the label rate. Our results also showed different responses between the two cultivars used, indicating that breeding efforts may be able to increase tolerance to some herbicides. Cultivar differences may also explain differences between these results and results of previous studies. Because of hemp's sensitivity to the label rates of many commonly used herbicides, other means of weed control should be studied and used. Additional research on other hemp cultivars, impact of crop size and developmental stage, and environmental conditions should also be considered to better understand herbicide tolerance of industrial hemp.

**Acknowledgments.** The authors thank the University of Wisconsin–Madison Soybean and Small Grains and Cropping Systems Weed Science research groups for their technical assistance in establishing field experiments and data collection. Funding for HOC's graduate research assistantship was provided by UW–Madison Division of Extension and College of Agricultural and Life Sciences Industrial Hemp Capacity Funds and a private donation from Mr. Tim Erdman. No conflict of interest has been declared.

## References

- Agricultural Act of 2014, 128 Stat 649 (2014) <https://www.govinfo.gov/content/pkg/PLAW-113publ79/pdf/PLAW-113publ79.pdf>. Accessed: February 18, 2022
- Agricultural Improvement Act of 2018, 132 Stat 4490 (2018) <https://www.congress.gov/115/plaws/publ334/PLAW-115publ334.pdf>. Accessed: February 18, 2022
- Amaducci S, Scordia D, Liu FH, Zhang Q, Guo H, Testa G, Cosentino SL (2015) Key cultivation techniques for hemp in Europe and China. *Indust Crops Prod* 68:2–16
- Anonymous (2020) Sharpen® herbicide product label. BASF NVA 2020-04-322-0159. Research Triangle Park, NC: BASF. 31 p
- Arneson NJ, Wang D, Werle R (2019) Herbicide rotation restrictions before planting industrial hemp. <https://www.wiscweeds.info/post/herbicide-rotation-restrictions-before-planting-industrial-hemp/>. Accessed: November 11, 2021
- Bauer TA, Renner KA, Penner D, Kelly JD (1995) Pinto bean (*Phaseolus vulgaris*) varietal tolerance to imazethapyr. *Weed Sci* 43:417–424
- Buhler DD, Hartzler RG, Forcella F (1997) Implications of weed seedbank dynamics to weed management. *Weed Sci* 45:329–336
- Cherney J, Small E (2016) Industrial hemp in North America: production, politics, and potential. *Agronomy* 6:58
- Cole C, Zurbo B (2008) Industrial hemp: a new crop for NSW. Primefact 801. New South Wales, Australia: Department of Primary Industries. 6 p
- Cousens R, Mortimer AM (1995) Dynamics of weed populations. *Weed Technol* 10:5–6
- Dekker J (1999) Soil weed seed banks and weed management. *J Crop Protect* 2:139–166
- Doll J (2001) Knowing When to Look for What: Weed Emergence and Flowering Sequences in Wisconsin. Madison, WI: Department of Agronomy, University of Wisconsin–Madison. 8 p
- Ehrensing D (1998) Feasibility of Industrial Hemp Production in the United States Pacific Northwest. Station Bulletin 681. Corvallis, OR: Agricultural Experiment Station, Oregon State University. 41 p
- Flessner ML, Bryd J, Bamber KW, Fike JH (2020) Evaluating herbicide tolerance of industrial hemp (*Cannabis sativa* L.). *Crop Sci* 60:419–427
- Gallandt ER (2006) How can we target the weed seedbank? *Weed Sci* 54: 588–596
- Hardcastle WS (1974) Differences in the tolerance of metribuzin by varieties of soybeans. *Weed Res* 14:181–184
- Harker KN, O'Donovan JT (2013) Recent weed control, weed management, and integrated weed management. *Weed Technol* 27:1–11
- Hooks PJ (2018) Production of industrial hemp in Kentucky. MS thesis, Murray State University. 102 p
- Hossain MM, Begum M (2015) Soil weed seed bank: importance and management for sustainable crop production—a review. *J Bangladesh Agric Univ* 13:221–228
- Hummel AW, Chauhan RD, Cermak T, Mutka AM, Vijayaraghavan A, Boyher A, Starker CG, Bart R, Voytas DF, Taylor NJ (2018) Allele exchange at the EPSPS locus confers glyphosate tolerance in cassava. *Plant Biotechnol J* 16:1275–1282
- Johnson EN, Willenborg CJ (2018) Minor use and hemp herbicide screening. Canadian Hemp Trade Alliance Annual Conference. Winnipeg, MB, November 20–22
- Johnson R (2014) Defining hemp: a fact sheet. Report R44742. Washington, DC: Congressional Research Service. 11 p
- Karus M, Vogt D (2004) European hemp industry: cultivation, processing and product lines. *Euphytica* 140:7–12
- Knezevic S, Cuvaca I, Scott J (2020) Industrial hemp tolerance to late-POST herbicides. <https://cropwatch.unl.edu/2020/industrial-hemp-tolerance-late-post-herbicides>. Accessed: November 5, 2021
- LeCloux R (2019) Regulating Wisconsin's Hemp Industry. Madison, WI: Wisconsin Legislative Reference Bureau. 19 p
- Lembi CA, Ross MA (1985) Applied Weed Science. Minneapolis, MN: Burgess. 340 p
- Lindquist J, Mortenson D, Clay S, Schmenk R, Howatt K, Westra P (1996) Stability of corn (*Zea mays*)-velvetleaf (*Abutilon theophrasti*) interference relationships. *Weed Sci* 44:309–313
- Maxwell BA (2016) Effects of herbicides on industrial hemp (*Cannabis sativa*) phytotoxicity, biomass, and seed yield. MS thesis, Western Kentucky University. 28 p
- Oliveira MC, Pereira GA, Ferreira EA, Santos JB, Knezevic SZ, Werle R (2018) Additive design: the concept and data analysis. *Weed Res* 58:338–347
- R Development Core Team (2021) R: A Language and Environment for Statistical Computing. Vienna, Austria: R Foundation for Statistical Computing. <https://www.R-project.org/>. Accessed: February 18, 2022
- Ritz C, Baty F, Streibig J, Gerhard D (2015) Dose–response analysis using R. *PLoS ONE* 10:e0146021
- Sandler LN, Beckerman JL, Whitford F, Gibson K (2019) *Cannabis* as conundrum. *Crop Protect* 117:37–44
- Schluttenhofer C, Yuan L (2017) Challenges towards revitalizing hemp: a multifaceted crop. *Trends Plant Sci* 22:917–929
- Schluttenhofer C, Yuan L (2019) Hemp hooray for cannabis research. *Science* 363:701–702
- Small E, Marcus D (2002) Hemp: a new crop with new uses for North America. *Trends New Crops New Uses* 24:284–326
- Sosnoskie LM, Maloney E (2021) Industrial hemp sensitivity to pre- and post-emergence herbicides. P. 8 in Proceedings of the Weed Science Society of America Annual Meeting. Westminster, CO: Weed Science Society of America
- [U.S. EPA] U.S. Environmental Protection Agency (2021) Pesticide products registered for use on hemp, pesticide registration. <https://www.epa.gov/pesticide-registration/pesticide-products-registered-use-hemp>. Accessed: February 18, 2022
- Wright AH (1918) Wisconsin's Hemp Industry. Madison, WI: Agricultural Experiment Station of the University of Wisconsin. 46 p