

## **Phytoextraction Potential of *Rhizophora Apiculata*: A Case Study in Matang Mangrove Forest Reserve, Malaysia**

Authors: Khan, Waseem Razzaq, Rasheed, Fahad, Zulkifli, Syaizwan Zahmir, Kasim, Mohamad Roslan bin Mohamad, Zimmer, Martin, et al.

Source: Tropical Conservation Science, 13(1)

Published By: SAGE Publishing

URL: <https://doi.org/10.1177/1940082920947344>

---

BioOne Complete ([complete.BioOne.org](https://complete.BioOne.org)) is a full-text database of 200 subscribed and open-access titles in the biological, ecological, and environmental sciences published by nonprofit societies, associations, museums, institutions, and presses.


Your use of this PDF, the BioOne Complete website, and all posted and associated content indicates your acceptance of BioOne's Terms of Use, available at [www.bioone.org/terms-of-use](https://www.bioone.org/terms-of-use).





Usage of BioOne Complete content is strictly limited to personal, educational, and non - commercial use. Commercial inquiries or rights and permissions requests should be directed to the individual publisher as copyright holder.

---

BioOne sees sustainable scholarly publishing as an inherently collaborative enterprise connecting authors, nonprofit publishers, academic institutions, research libraries, and research funders in the common goal of maximizing access to critical research.

# Phytoextraction Potential of *Rhizophora Apiculata*: A Case Study in Matang Mangrove Forest Reserve, Malaysia

Tropical Conservation Science  
Volume 0: 1–8  
© The Author(s) 2020  
Article reuse guidelines:  
sagepub.com/journals-permissions  
DOI: 10.1177/1940082920947344  
journals.sagepub.com/home/trc  


Waseem Razzaq Khan<sup>1,2</sup> , Fahad Rasheed<sup>3</sup> ,  
Syaizwan Zahmir Zulkifli<sup>4,5</sup> ,  
Mohamad Roslan bin Mohamad Kasim<sup>1</sup>, Martin Zimmer<sup>6,7</sup>,  
Ahmad Mustapha Pazi<sup>1</sup> , Nur Amira Kamrudin<sup>4,5</sup>, Zikria Zafar<sup>3</sup>,  
I. Faridah-Hanum<sup>2</sup>, and M. Nazre<sup>1</sup>

## Abstract

Disposal of industrial wastewater has resulted in increased concentration of heavy metals (HMs) along the coastline of Malaysia. However, little is known about the accumulation capacity of HMs by *Rhizophora apiculata* in Matang Mangrove Forest Reserve (MMFR) Malaysia. The aim of this study is to measure the concentration of HMs in different ages of mangrove forests. In this study, 15 and 80-year old trees of *Rhizophora apiculata* were selected for experimentation. Thirty samples of leaves, roots and sediments were analyzed to measure the concentration of HMs in 15 and 80-year-old trees. The measured concentrations of copper (Cu), iron (Fe), manganese (Mn) and zinc (Zn) in leaves, roots and sediments were used to compare bio-concentration and translocation factor between the abovementioned two age groups. Concentration of Mn came out to be significantly higher in leaves than in sediment. This suggested that *Rhizophora apiculata* was an efficient Mn-extractor. On the other hand, it was found less efficient in extracting heavier metals (Fe, Cu and Zn) from the sediment, as their concentration was lower in leaves and roots as compared to sediments. The translocation factor was highest for Mn, indicating high mobility of Mn from roots towards the leaves. Bio-concentration factor was also found highest for Mn (3.52) followed by Zn (1.88), Cu (1.33) and Fe (0.26). Therefore, it can be concluded that *Rhizophora apiculata* is more efficient in extracting Mn as compared to Zn, Cu and Fe.

## Keywords

phytoremediation, heavy metals, *Rhizophora apiculata*, translocation factor, bio-concentration

## Introduction

Mangroves found at the interface of land and sea are highly productive wetlands of tropical and sub-tropical regions (Alongi Daniel, 2002; Chmura et al., 2003; Gandaseca et al., 2011; Praveena et al., 2008). Mangroves help reduce soil erosion and maintain stability of adjoining landforms (Alongi Daniel, 2002; Clark et al., 1997; Murin, 1995). It has been documented that mangrove sediments act as a sink for heavy metals (HMs) of anthropogenic origin (Peters et al., 1997; Tam & Wong, 1997).

The elevated level of HMs in the environment has become an important issue due to their persistence, toxicity and bio-accumulation in the food web

<sup>1</sup>Department of Forest Management, Faculty of Forestry and Environment, Universiti Putra Malaysia

<sup>2</sup>Institut Ekosains Borneo, Universiti Putra Malaysia Kampus Bintulu

<sup>3</sup>Department of Forestry and Range Management, University of Agriculture, Faisalabad, Pakistan

<sup>4</sup>Faculty of Science, Universiti Putra Malaysia

<sup>5</sup>International Institute of Aquaculture and Aquatic Sciences, Universiti Putra Malaysia

<sup>6</sup>Leibniz-Centre for Tropical Marine Research (ZMT), Bremen, Germany

<sup>7</sup>Faculty of Biology/Chemistry, University of Bremen

Received 13 May 2019; Accepted 14 July 2020

## Corresponding Author:

Waseem Razzaq Khan, Department of Forest Management, Faculty of Forestry and Environment, Universiti Putra Malaysia, 43400 UPM Serdang, Selangor, Malaysia.

Email: waseemjatoi4@gmail.com



Creative Commons Non Commercial CC BY-NC: This article is distributed under the terms of the Creative Commons Attribution-NonCommercial 4.0 License (<https://creativecommons.org/licenses/by-nc/4.0/>) which permits non-commercial use, reproduction and distribution of the work without further permission provided the original work is attributed as specified on the SAGE and Open Access pages (<https://us.sagepub.com/en-us/nam/open-access-at-sage>)

(Haris et al., 2017; Shafie et al., 2013; Soliman et al., 2015). Major sources of HM contamination include agricultural chemicals and industrial effluents. Therefore, high concentration of HMs are found in mangrove areas adjacent to agricultural and industrial zones (Vane et al., 2009). These HMs include Copper (Cu), Nickel (Ni), Zinc (Zn), Lead (Pb), Arsenic (As), Cadmium (Cd) and Manganese (Mn; Chowdhury et al., 2015). In this scenario, phytoextraction is being used to treat HM contamination of soil and water since decades (Kaewtubtim, 2016).

Phytoremediation is a green technology that utilizes different types of plants, called phytoremediators, that extract HMs from the soil (Ismail, 2012). In this regard, *Rhizophora apiculata* (*R. apiculata*) is an important mangrove specie found in Matang Mangrove Forest Reserve (MMFR) in Perak state, Peninsular Malaysia. Globally this specie is well known for its ability to improve the water quality by trapping sediments and extracting minerals dissolved in seawater due to their dense root system (Alongi Daniel, 2002; Kathiresan & Bingham, 2001; Mremi & Machiwa, 2003). However, little research is conducted regarding the phytoextraction potential of *R. apiculata* in MMFR. The present study tries to address this research gap. MMFR has managed and unmanaged forest compartments with different tree ages. Our study focused on two age groups: 15-year-old from managed and 80-year-old from unmanaged compartment, also known as VJR (Virgin Jungle reserve). The following objectives were undertaken;

investigate concentration of HMs (Mn, Fe, Zn and Cu) in leaves and roots of *R. apiculata* specie. Concentration of these HMs were also determined in sediments. In addition, translocation and bioconcentration factor of these HMs were compared between the leaves and root samples of 15 and 80 old aged trees. The results of this study can also be used to assess the phytoextraction behavior of different aged trees of *R. apiculata*.

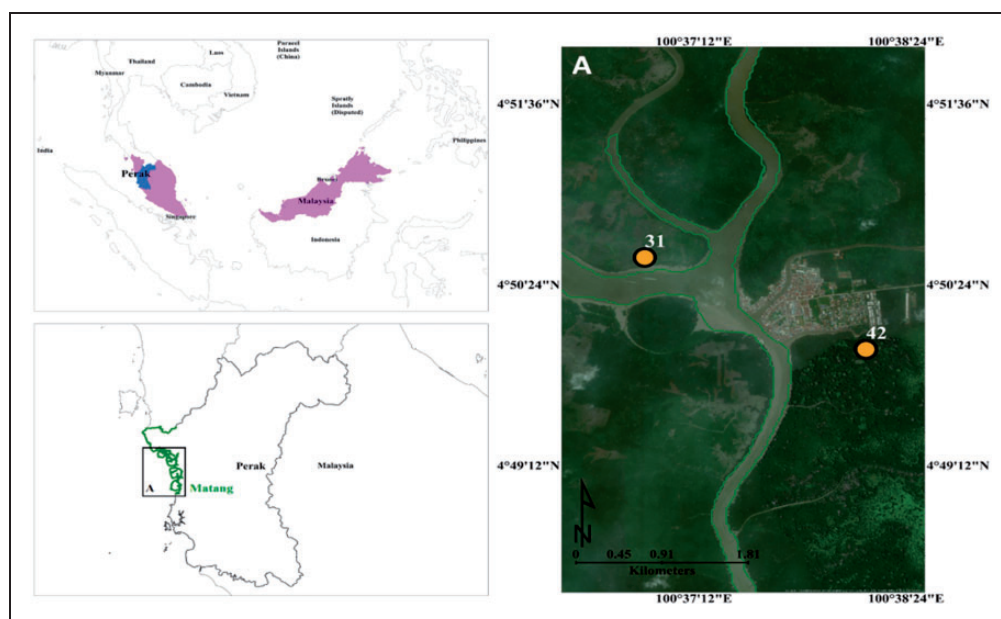
## Methods

### Study Area

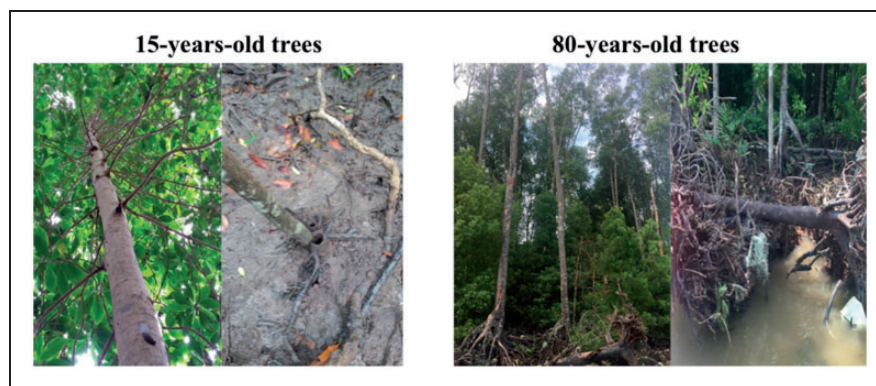
The study was conducted in MMFR in Perak state, Peninsular Malaysia (Figure 1). The total area of MMFR is 40,600 ha and is divided into mainland forest (30%) and island forest (70%).

### Sampling Procedure

In this study, 15-year-old (compartment 31, 04° 50.503' N, 100° 36.195' E) and 80-year-old (compartment 42, 04° 50' 04.5'' N, 100° 38' 05.5'' E) trees were selected to obtain samples of leaves, root and sediment (Figure 2). A total of 30 healthy trees (15 trees per age group) were sampled randomly. A metal ball was tied to a rope and launched towards the tree canopy to collect 250 g of fresh leaf samples. To sample roots 7 cm of root section was collected. 400 g of sediment samples were taken at a depth of 10 cm using peat auger during the dry season of



**Figure 1.** Study Site (A) Matang Mangrove Forest Reserve. Compartments for sampling are shown (yellow dots) by overlaying on imagery from Google Earth (Source: Google Earth Pro V 7.3.2.5776, July 13 2019, lat 4.838128 lon 100.624829, Eye alt 3.52 km, Maxar Technologies, CNES/Airbus). Compartment 42 represents 80 year old trees and compartment 31 represents 15 year old trees.



**Figure 2.** Trees of *Rhizophora apiculata* in Compartment 31 (15 Year Old) and 42 (80 Year Old) at Matang Mangrove Reserve Forest, Perak Malaysia.

2016. All samples were collected at the same time. Each sample was placed in zip-lock plastic bags, tagged and stored in an ice chest at 4°C during a five-hour transportation. In the laboratory, leaf and root samples were washed together with deionized water to remove dust, soil particles and algal traces and were oven-dried to a constant weight (Arianto et al., 2015). Subsequently, each leaf and root sample were grinded using porcelain pestle mortar and sieved using mesh size of 2 mm (Tam & Wong, 2000).

### Heavy Metal Assessment

2 g of each sample (leaves, roots and sediment) was placed in volumetric flasks (250 ml) and 20 ml of aqua regia solution was added (Walsh et al., 1997; HCL: HNO<sub>3</sub> in 3:1 ratio). The solution was heated until it became clear and was filtered through ash-less filters (Whatman filter paper no. 2) into 100 ml volumetric flask. The solution was diluted with 40 ml distilled water and analyzed in atomic absorption spectrometer (AAS) to determine the elemental concentration of Mn, Fe, Zn and Cu (Brooks, 1983; Fletcher, 1981; Van Loon, 1985). Sediment physiochemical properties can be found in Supplementary Material.

### Translocation and Bioconcentration Factor

Bioconcentration factor (BCF) indicates the capability of plants to take up heavy metals from soil (Qiu et al., 2011; Usman et al., 2012). Translocation factor (TF) shows the efficiency of plants in transporting HMs from belowground to aboveground organs (Usman et al., 2012). TF was calculated using the following equation (Mahdavian et al., 2017).

$$TF = \frac{MC_s \text{ (mg kg}^{-1}\text{)}}{MC_r \text{ (mg kg}^{-1}\text{)}}$$

Where  $MC_s$  and  $MC_r$  is the metal concentration in shoot and root respectively. The BCF was calculated using following equation (Kamari et al., 2014).

$$BCF = \frac{MC_s \text{ (mg kg}^{-1}\text{)}}{MC_{so} \text{ (mg Kg}^{-1}\text{)}}$$

Where  $MC_s$  and  $MC_{so}$  is the metal concentration in shoot and soil respectively.

### Statistical Analysis

Data corresponding to sediments was tested using one-way ANOVA to study the effect of location (compartment). Significant difference between the calculated mean of HM concentration in leaves, root and sediment samples were compared using post-hoc Tukey's HSD tests. All means are presented with their standard errors and were taken at a significance level of 95% ( $p < 0.05$ ). The statistical analysis was conducted by using SAS version 9.4.

## Results

### Sediment Characteristic

Results showed that the sediment fractions were 44.4/0.5/55 versus 41/0.5/58.4 (sand/silt/clay) for 15- and 80-year-old compartments, respectively (Supplementary Material Figure 1). No significant difference was found for pH and salinity between the two compartments ( $p > 0.05$ ). The pH of sediments collected from 15-year-old and 80-year-old compartments was 4.5 and 5.1 respectively. Soil salinity came out to be 18.8 and 19.1 ppt for 15 and 80-year old compartments respectively.



### Heavy Metal Concentration in Sediments and Plant Tissue

Results were described in two ways, firstly comparison of concentration of HMss between age groups and samples (Table 1). Highest concentration of Mn ( $5 \text{ mg kg}^{-1}$ ) was found in the leaves of 80-year-old trees followed by 15-year-old trees leaves ( $3.1 \text{ mg kg}^{-1}$ ), 80-year-old compartment roots ( $2.06 \text{ mg kg}^{-1}$ ) and sediment ( $2.2 \text{ mg kg}^{-1}$ ; Table 1). Sediments of 80-year-old compartment had the highest concentration of Zn ( $0.9 \text{ mg kg}^{-1}$ ), Cu ( $0.13 \text{ mg kg}^{-1}$ ) and Fe ( $46 \text{ mg kg}^{-1}$ ). Furthermore, Zn concentration was lowest in the roots of 80-year-old compartment. In case of Fe and Cu the lowest concentrations ( $3.75 \text{ mg kg}^{-1}$  and  $0.05 \text{ mg kg}^{-1}$ ) were observed respectively in the leaves of 15-year-old trees.

Secondly, concentrations of HMs were compared only between samples (Table 2). Each concentration in Table 2 was the mean taken from the concentration in the 15- and 80-years old compartments. The highest content of Mn ( $4.26 \text{ mg kg}^{-1}$ ) was found in leaves followed

by roots ( $1.56$ ) and sediment ( $1.65$ ) (Table 2), indicating a high metal translocation efficiency from sediments to leaves. Along this line, iron (Fe) content was highest in sediment ( $42.7 \text{ mg kg}^{-1}$ ), while leaves ( $5.44 \text{ mg kg}^{-1}$ ) and roots ( $6.02 \text{ mg kg}^{-1}$ ) contained much less Fe. Hence, *R. apiculata* does not uptake Fe and accumulates in tissue. Zinc (Zn) was found in similar concentrations in sediments ( $0.86 \text{ mg kg}^{-1}$ ), roots ( $0.52 \text{ mg kg}^{-1}$ ) and leaves ( $0.67 \text{ mg kg}^{-1}$ ), suggesting moderate uptake and efficient translocation. Similarly, Cu concentrations did not differ in sediments, roots and leaves (Table 2).

### Bioconcentration and Translocation Factor

In the present study, BCF of Mn, Zn and Cu were 3.52, 1.88 and 1.33, respectively. BCF of Fe as 0.26 indicated insignificant uptake. Along the same line, Mn (TF = 2.73) and Zn (TF = 1.28) are efficiently translocated from roots to leaves (Figure 3). Whereas Fe and Cu were equally distributed among leaves and roots, which also requires moderate transport.

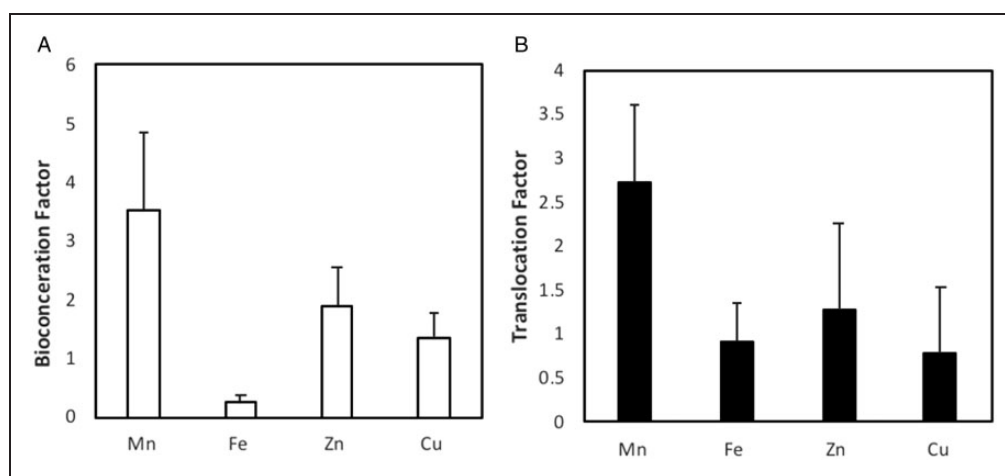
**Table 1.** Heavy Metal Concentration of Both Compartments in Leaf, Root and Sediment Samples in  $\text{mg kg}^{-1}$ .

| Age (yr.) | Heavy metals | Leaves                             | Roots                             | Sediment                          |
|-----------|--------------|------------------------------------|-----------------------------------|-----------------------------------|
| 15        | Mn           | $3.1 \pm 0.5$                      | <b><math>1.0 \pm 0.6</math></b>   | <b><math>1.1 \pm 0.2</math></b>   |
|           | Fe           | $7 \pm 2$                          | $5 \pm 1$                         | $39 \pm 6$                        |
|           | Zn           | $0.75 \pm 0.07$                    | $0.51 \pm 0.09$                   | <b><math>0.72 \pm 0.07</math></b> |
|           | Cu           | <b><math>0.05 \pm 0.007</math></b> | $0.06 \pm 0.01$                   | $0.09 \pm 0.01$                   |
| 80        | Mn           | $5 \pm 1$                          | <b><math>2.06 \pm 0.03</math></b> | <b><math>2.2 \pm 0.3</math></b>   |
|           | Fe           | $3.75 \pm 0.01$                    | $7 \pm 2$                         | $46 \pm 6$                        |
|           | Zn           | $0.6 \pm 0.1$                      | $0.5 \pm 0.1$                     | <b><math>0.99 \pm 0.07</math></b> |
|           | Cu           | <b><math>0.08 \pm 0.01</math></b>  | $0.10 \pm 0.04$                   | $0.13 \pm 0.02$                   |

Bold values indicate the significant differences ( $p < 0.05$ ) among leaves, root and sediment.

### Discussion

In this study, we measured and compared the concentration of Fe, Cu, Mn and Zn in the leaves, roots and sediment samples of 15- and 80-year old compartments of *R. apiculata*. The results showed that Mn accumulation was higher in leaves of 80-year-old trees as compared to roots and sediments (Table 2). Similar results have been reported by Kaewtubtim et al. (2016) where Mn accumulation in plant tissue was significantly higher than other metals. According to Greger (2004) low absorption of heavy metals in plants may be due to high level of soil salinity which results in the formation of metal-chloride complexes. Such complexes make the HMs less available for plants to uptake and accumulate.

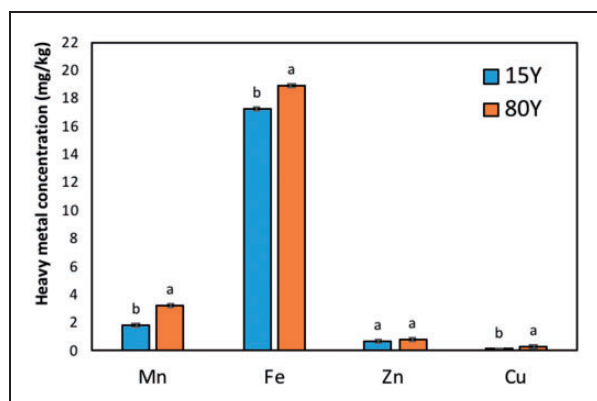


**Figure 3.** Bioconcentration (A) and Translocation Factor (B) of the of *Rhizophora apiculata*.

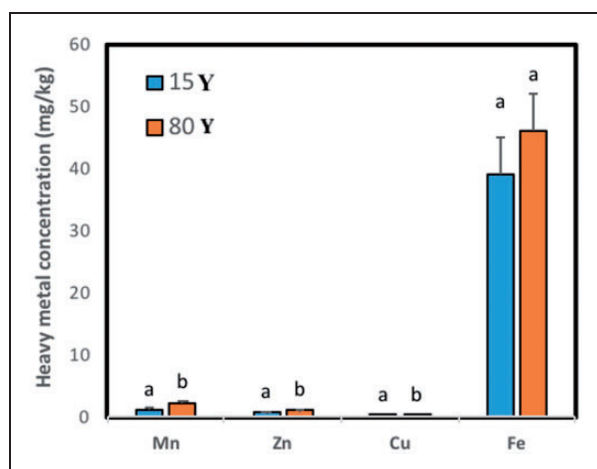
**Table 2.** Mean Heavy Metals Accumulation in Leaves and Roots of *Rhizophora apiculata* Along With Sediments.

| Sample   | Mn                               | Fe                                | Zn                                 | Cu                               |
|----------|----------------------------------|-----------------------------------|------------------------------------|----------------------------------|
| Leaves   | 4.26 <sup>a</sup> ( $\pm 0.59$ ) | 5.44 <sup>b</sup> ( $\pm 1.19$ )  | 0.67 <sup>a,b</sup> ( $\pm 0.07$ ) | 0.07 <sup>a</sup> ( $\pm 0.01$ ) |
| Root     | 1.56 <sup>b</sup> ( $\pm 0.19$ ) | 6.02 <sup>b</sup> ( $\pm 1.28$ )  | 0.52 <sup>b</sup> ( $\pm 0.07$ )   | 0.09 <sup>a</sup> ( $\pm 0.02$ ) |
| Sediment | 1.65 <sup>b</sup> ( $\pm 0.21$ ) | 42.77 <sup>a</sup> ( $\pm 4.33$ ) | 0.86 <sup>a</sup> ( $\pm 0.06$ )   | 0.12 <sup>a</sup> ( $\pm 0.01$ ) |

Different superscripts letters indicate the significant differences between both groups ( $p < 0.05$ ).



**Figure 4.** Heavy Metal Concentration in Shoot (Leaves + Roots) of *Rhizophora apiculata*. Small letters indicate the significant differences between 15 and 80 age groups.



**Figure 5.** Heavy metal Concentrations in Sediments at Two Different Sites (15 and 80 Years).

In contrast to the present study, Kamaruzzaman et al. (2009) found that the concentration of Cu was highest in sediments followed by roots, barks and leaves. Other studies (John & Waznah 2011; Kamaruzzaman et al., 2009; ) also reported roots to accumulate more HMs than shoots of the plants (Supplementary Material Table 1). Similar observations were reported for other mangrove species i.e. *Rhizophora mucronata* and

*Avicennia marina* (Kaewtubtim et al., 2016; I. N. Kumar et al., 2011; Pahlawattaarachchi et al., 2009).

The concentrations of Fe and Cu were higher in roots than in shoots, suggesting efficient uptake and accumulation that might be linked to better oxidation in the rhizosphere (Marchand et al., 2011). However little internal transport of these elements was noticed. High accumulation of HMs in roots is regarded as metal exclusion strategy in plants which is employed to avoid metal toxicity (Marques et al., 2009). Low accumulation of Cu is in line with the findings of Paz-Alberto et al. (2015) where Cu was not detected in *R. apiculata* tissues along the Subic Bay, Philippine. No strong conclusion can be drawn from the observations in Table 1 and Table 2 about the distribution of HMs between different samples and age groups. Therefore, an additional analysis was carried out in this study. Concentrations in leaves and root were combined and averaged for both age groups separately (Figure 4). Further, concentrations of sediment samples were also combined and averaged for both age groups and compared. Concentrations of Mn, Fe and Cu in *R. apiculata* tissue samples were higher at the 80-year-old site than at the 15-year-old site. This maybe due to site-effect since 80-year-old compartment is closer to urban area. However, in case of Zn site may not be a limiting factor since no significant difference in Zn concentration was observed between two different ages (Figure 4). It can be concluded that phytoremediation potential of *R. apiculata* increases with age, due to accumulation of metals in tree tissue over time. For sediment samples, similar pattern was observed where Mn, Zn, Cu and Fe concentrations were higher in 80-year-old compartment (Figure 5). Moreover, Mn, Zn and Cu showed significant differences in both compartments ( $p < 0.05$ ). This pattern was expected because 80-year-old compartment receives more heavy metal effluents therefore increasing the pollution level in sediments. Detailed future studies should investigate accumulation rates over time in additional age classes of trees at different study sites.

BCF and TF are used to estimate the phytoremediation potential of a certain specie (Qiu et al., 2011; Usman et al., 2012). In this study we were able to demonstrate through high metal concentrations in roots combined with TF of more than 1 that *R. apiculata* have high metal uptake and translocation from soil to root and

further from root to shoot (Haque et al., 2008; Hussain et al., 2017; Sun et al., 2009). In phytoremediation technique, effective translocation of pollutants from root to shoot are required that enables speedy harvest and removal of contaminants from the ecosystem (P. B. A. N. Kumar et al., 1995). In this regard, hyper-accumulators are not only tolerant to high concentration of pollutants but also exhibit BCF and TF of greater than 1 (Baker & Whiting, 2002; Ma et al., 2001a). Some established hyper-accumulators, like *Pteris vittata*, have BCF greater than 100 (Ma et al., 2001b). *R. apiculata* with BCF and TF of greater than 1 can best be used as phyto stabilizers, functioning as long-term sinks for heavy metals.

## Implications for Conservation

*R. apiculata* is a good selection for phytoremediation in Mn, Zn and Cu contaminated areas. It might not be so relevant for Fe contaminated sites. Salts from sea water are excluded by fine roots and salinity around roots increases, these metals, having potentially negative effects, are not, or only weakly, excluded. Hence, this species might prove to be a valuable phytoremediator for some heavy metals in contaminated areas and ecosystem design (Zimmer, 2018) through (re-)establishing *R. apiculata* stands in degraded mangrove areas. The difference between younger and older trees might be due to (i) plantation site rather than the age or (ii) simply due to accumulation in plant tissues over time. However future studies are warranted to test the hypothesis that older trees are more efficient in taking up and accumulating heavy metal. Overall, following the ecosystem design concept (Zimmer, 2018), it is suggested to conserve and plant more *R. apiculata* in heavy metal contaminated areas for remediation and old growth *R. apiculata* trees should be preserved without any intervention of silviculture practices.

## Acknowledgments

The authors would like to acknowledge “JK Teknikal Mengenai Penyelidikan dan Pembangunan (R&D) Program Penanaman Bakau dan Spesies Lain yang Sesuai di Pesisiran Pantai Negara” Ministry of Natural Resources and Environment of Malaysia. We would like to thank Dr. Shamsuddin Ibrahim and Dr. Khalid Hakeem for their kind guidance and effort for this research project.

## Declaration of Conflicting Interests

The author(s) declared no potential conflicts of interest with respect to the research, authorship, and/or publication of this article.


## Funding

The author(s) disclosed receipt of the following financial support for the research, authorship, and/or publication of this article: This research was funded by Forest Research Institute Malaysia (FRIM), UPM Geran Putra and Fundamental Research Grant scheme (FRGS) (Vot. No): (6300835, 9522100, 5540232).

## ORCID iDs

Waseem Razzaq Khan  <https://orcid.org/0000-0002-5981-2105>

Fahad Rasheed  <https://orcid.org/0000-0001-8807-5370>

Syaizwan Zahmir Zulkifli  <https://orcid.org/0000-0001-5822-7273>

Ahmad Mustapha Pazi  <https://orcid.org/0000-0001-6966-1497>

## Supplemental Material

Supplemental material for this article is available online.

## References

- Abdullah, F., Shaari, H., Satyanarayana, B., Khalik, W. M. A. W. M., & Jaafar, M. Z. M. (2018). Macro, micro, and non-essential elements in different parts of *Rhizophora apiculata*. *Malaysian Journal of Analytical Sciences*, 22(4), 570–578.
- Alongi Daniel, M. (2002). Present state and future of the world's mangrove forests. *Environmental Conservation*, 29(3), 331–349.
- Arianto, Chandra, I., Seca, G., Noraini, R., Ahmad, M. M. P., Osumanu, H. A., Hazandy, A. H., & Nik, M. A. M. (2015). Soil carbon storage in dominant species of mangrove Forest of Sarawak, Malaysia. *International Journal of Physical Sciences*, 10(6), 210–214.
- Baker, A. J. M., & Whiting, S. N. (2002). In search of the holy grail—A further step in understanding metal hyperaccumulation. *New Phytologist*, 155(1), 1–4.
- Beretta, A. N., Silbermann, A. V., Paladino, L., Torres, D., Bassahun, D., Musselli, R., & García-Lamohte, A. (2014). Soil texture analyses using a hydrometer: Modification of the Bouyoucos method. *Ciencia e Investigación Agraria*, 41(2), 25–271.
- Berner, R. A. (1971). *Principles of chemical sedimentology*. McGraw Hill.
- Brooks, R. (1983). *Biological methods of prospecting for minerals*. Wiley.
- Chmura, G. L., Shimon, C. A., Donald, R. C., & James, C. L. (2003). Global carbon sequestration in tidal, saline wetland soils. *Global Biogeochemical Cycles*, 17(4), n/a–n/a.
- Chowdhury, M. N. K., Ismail, A. F., Beg, M. D. H., Hegde, G., & Gohari, R. J. (2015). Polyvinyl alcohol/polysaccharide hydrogel graft materials for arsenic and heavy metal removal. *New Journal of Chemistry*, 39(7), 5823–5832.
- Clark, M. W., Mc, D., Peter, S., & Pillsworth, M. (1997). Hydrological controls on copper, cadmium, lead and zinc concentrations in an anthropogenically polluted mangrove ecosystem, Wynnum, Brisbane, Australia. *Journal of Coastal Research*, 13 (4), 1150–1158.

- Defew, L. H., Mair, J. M., & Guzman, H. M. (2005). An assessment of metal contamination in mangrove sediments and leaves from Punta Mala Bay, Pacific Panama. *Marine Pollution Bulletin*, 50(5), 547–552.
- Donato, D. C., Boone, K. J., Daniel, M., Sofyan, K., Melanie, S., & Markku, K. (2011). Mangroves among the most carbon-rich forests in the tropics. *Nature Geoscience*, 4(5), 293–297.
- Droppo, I. G., Leppard, G. G., Flannigan, D. T., & Liss, S. N. (1997). The freshwater floc: A functional relationship of water and organic and inorganic floc constituents affecting suspended sediment properties. In: Evans R.D., Wisniewski J., Wisniewski J.R. (eds.) *The interactions between sediments and water* (pp. 43–53). Springer.
- Förstner, U. (1989). *Contaminated sediments: Lectures on environmental aspects of particle-associated chemicals in aquatic systems. Lecture Notes in Earth Sciences*. Springer-Verlag.
- Fletcher, W. K. (1981). Analytical methods in geochemical prospecting. In G. J. S. Govett (Ed.), *Handbook of exploration geochemistry* (1st ed., p. 255). Elsevier.
- Gandaseca, S., Noraini, R., Johin, N., & Chandra, I. A. (2011). Status of water quality based on the physico-chemical assessment on river water at Wildlife Sanctuary Sibuti Mangrove Forest, Miri Sarawak. *American Journal of Environmental Sciences*, 7(3), 269.
- Greger, M. (2004). Metal availability, uptake, transport and accumulation in plants. In M. N. V. Prasad (Ed.), *Heavy metal stress in plants*, (pp. 1–27). Springer, Berlin, Heidelberg.
- Haque, N., Peralta-Videa, J. R., Jones, G. L., Gill, T. E., & Gardea-Torresdey, J. L. (2008). Screening the phytoremediation potential of desert broom (*Baccharis sarothroides* Gray) growing on mine tailings in Arizona, USA. *Environmental Pollution (Barking, Essex: 1987)*, 153(2), 362–368.
- Haris, H., Looi, L. J., Aris, A. Z., Mokhtar, N. F., Ayob, N. A. A., Yusoff, F. M., Salleh, A. B., & Praveena, S. M. (2017). Geo-Accumulation index and contamination factors of heavy metals (Zn and Pb) in urban river sediment. *Environmental Geochemistry and Health*, 39(6), 1259–1271.
- Hossain, M. D., & Nuruddin, A. A. (2016). Soil and mangrove: A review. *Journal of Environmental Science and Technology*, 9(2), 198–207.
- Hussain, S., Akram, M., Abbas, G., Murtaza, B., Shahid, M., Shah, N. S., Bibi, I., & Niazi, N. K. (2017). Arsenic tolerance and phytoremediation potential of *Conocarpus erectus* L. and *Populus deltoides* L. *International Journal of Phytoremediation*, 19(11), 985–991.
- Ismail, S. (2012). Phytoremediation: A green technology. *Iranian Journal of Plant Physiology*, 3(1), 567–576.
- John, B. A., & Waznah, A. S. (2011). And distribution of lead and copper in *Avicennia marina* and *Rhizophora apiculata* from Balok Mangrove Forest, Pahang, Malaysia. *Sains Malaysiana*, 40(6), 555–560.
- Kaewtubtim, P., Meeinkuirt, W., Seepom, S., & Pichtel, J. (2016). Heavy metal phytoremediation potential of plant species in a mangrove ecosystem in Pattani Bay. *Applied Ecology and Environmental Research*, 14(1), 367–382.
- Kamari, A., Yusoff, M., Najiah, S., Putra, W. P., Ishak, C. F., Hashim, N., Mohamed, A., & Phillip, E. (2014). Metal uptake in water spinach grown on contaminated soil amended with chicken manure and coconut tree sawdust. *Environmental Engineering and Management Journal*, 13(9), 2219–2228.
- Kamaruzzaman, B. Y., Ong, M. C., Jalal, K. C. A., Shahbudin, S., & Mohd, N. O. (2009). Accumulation of lead and copper in *Rhizophora apiculata* from Setiu Mangrove Forest, Terengganu, Malaysia. *Journal of Environmental Biology*, 30(5 Suppl), 821–824.
- Kathiresan, K., & Bingham, B. L. (2001). *Biology of mangroves and mangrove ecosystems. Advances in marine biology*, 40, 84–254.
- Kauffman, J. B., & Daniel, C. D. (2012). Protocols for the measurement, monitoring and reporting of structure, biomass, and carbon stocks in mangrove forests. *Citeseer*.
- Kumar, I. N., Sajish, P. R., Kumar, R. N., Basil, G., & Shailendra, V. (2011). An assessment of the accumulation potential of Pb, Zn and Cd by *Avicennia marina* (Forssk.) Vierh. in Vamleshwar mangroves, Gujarat, India. *Notulae Scientia Biologicae*, 3(1), 36–40.
- Kumar, P. B. A. N., Dushenko, V., Motto, H., & Raskin, I. (1995). Phytoextraction the use of plants to remove heavy metals from soils. *Environmental Science & Technology*, 29(5), 1232–1238. pp
- Lasat, M. M. (2002). Phytoextraction of toxic metals. *Journal of Environmental Quality*, 31(1), 109–120.
- Ma, L. Q., Komar, K. M., Tu, C., Zhang, W., Cai, Y., & Kennelley, E. D. (2001a). Addendum: A fern that hyperaccumulates arsenic. *Nature*, 411(6836), 438–438.
- Ma, L. Q., Komar, K. M., Tu, C., Zhang, W., Cai, Y., & Kennelley, E. D. (2001b). A fern that hyperaccumulates arsenic. *Nature*, 409(6820), 579.
- Mahdavian, K., Ghaderian, S. M., & Torkzadeh-Mahani, M. (2017). Accumulation and phytoremediation of Pb, Zn, and Ag by plants growing on Koshk lead zinc mining area. *Journal of Soils and Sediments*, 17(5), 1310–1320.
- Marchand, C., Allenbach, M., & Lallier-Vergès, E. (2011). Relationships between heavy metals distribution and organic matter cycling in mangrove sediments (Conception Bay, New Caledonia). *Geoderma*, 160(3–4), 444–456.
- Marques, A. P. G. C., Rangel, A. O. S. S., & Castro, P. M. L. (2009). Remediation of heavy metal contaminated soils: Phytoremediation as a potentially promising clean-up technology. *Critical Reviews in Environmental Science and Technology*, 39(8), 622–654.
- Mremi, S. D., & Machiwa, J. F. (2004). Heavy metal contamination of mangrove sediments and the associated biota in Dar Es Salaam, Tanzania. *Tanzania Journal of Science*, 29(1), 61–76.
- Murin, A. (1995). Basic criteria for selection of plant bioindicators from regional flora for monitoring environmental pollution. *Biol. Bratislava*, 50, 37–40.
- Pahalawattaarachchi, V., Purushothaman, C. S., & Vennila, A. (2009). Metal phytoremediation potential of *Rhizophora mucronata* (Lam.). *Indian Journal of Marine Sciences*, 38(2), 178–183.
- Paz-Alberto, A. M., & Sigua, G. C. (2013). Phytoremediation: A green technology to remove environmental pollutants. *American Journal of Climate Change*, 02(01), 71–86.
- Paz-Alberto, A. M., Vizmonte, J. L. D., & Sigua, G. C. (2015). Assessing diversity and phytoremediation potential of



- mangroves for copper contaminated sediments in Subic Bay, Philippines. *International Journal of Plant, Animal and Environmental Sciences*, 5(4), 25–35.
- Peters, E. C., Gassman, N. J., Firman, J. C., Richmond, R. H., & Power, E. A. (1997). Ecotoxicology of tropical marine ecosystems. *Environmental Toxicology and Chemistry*, 16(1), 12–40.
- Praveena, S. M., Abdullah, M. H., Aris, A. Z., & Radojevic, M. (2008). Application of sediment quality guidelines in the assessment of mangrove surface sediment in Mengkabong Lagoon, Sabah, Malaysia. *Journal of Environmental Health Science & Engineering*, 5(1), 35–42.
- Qiu, Y. W., Yu, K. F., Zhang, G., & Wang, W. X. (2011). Accumulation and partitioning of seven trace metals in mangroves and sediment cores from three estuarine wetlands of Hainan Island. *Journal of Hazardous Materials*, 190(1–3), 631–638.
- Rout, G. R., & Sahoo, S. (2015). Role of iron in plant growth and metabolism. *Reviews in Agricultural Science*, 3(0), 1–24.
- Shafie, N. A., Ahmad, Z. A., Mohamad, P. Z., Hazzeman, H., Wan, Y. L., & Isa, N. M. (2013). Application of geoaccumulation index and enrichment factors on the assessment of heavy metal pollution in the sediments. *Journal of Environmental Science and Health. Part A, Toxic/Hazardous Substances & Environmental Engineering*, 48(2), 182–190.
- Soliman, N. F., Samir, M. N., Mohamed, A. O., & Huda, S. E. H. (2015). Assessment of metals contamination in sediments from the Mediterranean Sea (Libya) using pollution indices and multivariate statistical techniques. *Global Journal of Advanced Research*, 1, 120–136.
- Steel, R. G. D., Torrie, J. H., & Dickey, D. (1997). *Principal and procedure of statistics. A biometrical approach* (3rd ed., pp. 352–358). McGraw Hill Book Co. Inc.
- Stokes, D. J., & Harris, R. J. (2015). Sediment properties and surface erodibility following a large-scale mangrove (*Avicennia marina*) removal. *Continental Shelf Research*, 107, 1–10.
- Sun, H., Wu, W., & Wang, L. (2009). Phenanthrene partitioning in sediment–surfactant–fresh/saline water systems. *Environmental Pollution (Barking, Essex: 1987)*, 157(8–9), 2520–2528.
- Tam, N. F. Y., & Wong, Y. S. (1997). Accumulation and distribution of heavy metals in a simulated mangrove system treated with sewage. *Hydrobiologia*, 352(1/3), 67–75.
- Tam, N. F. Y., & Wong, Y. S. (2000). Spatial variation of heavy metals in surface sediments of Hong Kong mangrove sediments. *Environmental Pollution*, 110(2), 195–205.
- Usman, A. R., Lee, S. S., Awad, Y. M., Lim, K. J., Yang, J. E., & Ok, Y. S. (2012). Soil pollution assessment and identification of hyper-accumulating plants in chromated copper arsenate (CCA) contaminated sites, Korea. *Chemosphere*, 87(8), 872–878.
- Vane, C. H., Harrison, I., Kim, A., Moss-Hayes, V., Vickers, B., & Hong, K. (2009). Organic and metal contamination in surface mangrove sediments of South China. *Marine Pollution Bulletin*, 58(1), 134–144.
- Van Loon, J. C. (1985). *Selected methods of trace metal analysis: Biological and environmental samples*. Wiley.
- Walsh, J. N., Gill, R., & Thirlwall, M. F. (1997). Dissolution procedures for geological and environmental samples. In R. Gill (Ed.), *Modern analytical geochemistry, an introduction to quantitative chemical analysis for earth, environmental and materials scientists* (1st ed., pp. 29–40). Addison Wesley Longman.
- Zimmer, M. (2018). Ecosystem design: When mangrove ecology meets human needs. In: Makowski C and Finkl CW (eds.) *Threats to mangrove forests: hazards, vulnerability, and management*. Berlin, Germany. (pp. 367–376). Springer.