

## **A revision of the endemic Malagasy genus *Beguea* (Sapindaceae)**

Authors: Schatz, George E., Gereau, Roy E., and Lowry, Porter P.

Source: *Candollea*, 72(1) : 45-66

Published By: The Conservatory and Botanical Garden of the City of Geneva (CJBG)

URL: <https://doi.org/10.15553/c2017v721a6>

---

BioOne Complete ([complete.BioOne.org](https://complete.BioOne.org)) is a full-text database of 200 subscribed and open-access titles in the biological, ecological, and environmental sciences published by nonprofit societies, associations, museums, institutions, and presses.

Your use of this PDF, the BioOne Complete website, and all posted and associated content indicates your acceptance of BioOne's Terms of Use, available at [www.bioone.org/terms-of-use](https://www.bioone.org/terms-of-use).

Usage of BioOne Complete content is strictly limited to personal, educational, and non - commercial use. Commercial inquiries or rights and permissions requests should be directed to the individual publisher as copyright holder.

---

BioOne sees sustainable scholarly publishing as an inherently collaborative enterprise connecting authors, nonprofit publishers, academic institutions, research libraries, and research funders in the common goal of maximizing access to critical research.

# A revision of the endemic Malagasy genus *Beguea* (Sapindaceae)

George E. Schatz, Roy E. Gereau & Porter P. Lowry II

## Abstract

SCHATZ, G.E., R.E. GEREAU & P.P. LOWRY II (2017). A revision of the endemic Malagasy genus *Beguea* (Sapindaceae). *Candollea* 72: 45-65. In English, English and French abstracts. DOI: <http://dx.doi.org/10.15553/c2017v721a6>

A taxonomic revision of the endemic Malagasy genus *Beguea* Capuron (*Sapindaceae*) is presented. While Capuron in 1969 originally recognized a single, variable species (*Beguea apetala* Capuron), a careful reevaluation of all available material allows us to recognize ten species, nine of which are described as new, on the basis of numerous floral and vegetative characters. Material of only two of the new species was available to Capuron, and was included in his broad circumscription of *Beguea apetala*, whereas all material of the remaining seven new species has been collected since 1992. The nine species are illustrated by line drawings, and several species are documented by field photographs. The geographic distribution of each species is presented and mapped, and a preliminary risk of extinction assessment is provided using the IUCN Red List criteria.

## Résumé

SCHATZ, G.E., R.E. GEREAU & P.P. LOWRY II (2017). Une révision du genre *Beguea* (Sapindaceae), endémique de Madagascar. *Candollea* 72: 45-65. En anglais, résumé anglais et français. DOI: <http://dx.doi.org/10.15553/c2017v721a6>

Une révision taxonomique du genre *Beguea* Capuron (*Sapindaceae*), endémique de Madagascar est présentée. Capuron n'avait reconnu qu'une seule espèce variable (*Beguea apetala* Capuron) en 1969 mais une réévaluation détaillée de l'ensemble du matériel disponible nous permet de reconnaître dix espèces dont neuf décrites comme nouvelles, basées sur de nombreux caractères floraux et végétatifs. Capuron avait à sa disposition des échantillons appartenant à seulement deux des nouvelles espèces, qu'il avait inclus dans sa délimitation de *Beguea apetala* tandis que tout le matériel des sept autres nouveautés a été récolté depuis 1992. Les neuf nouvelles espèces sont illustrées par des dessins à trait et plusieurs sont documentées par des photos prises sur le terrain. La distribution géographique de chaque espèce est présentée et cartographiée, et une évaluation du risque d'extinction selon les critères de la Liste Rouge de l'UICN est présentée.

## Keywords

SAPINDACEAE – *Beguea* – Madagascar – Conservation – New species

---

Addresses of the authors:

GES, REG: Africa and Madagascar Program, Missouri Botanical Garden, P.O. Box 299, St. Louis, MO 63166-0299, U.S.A. E-mail: [george.schatz@mobot.org](mailto:george.schatz@mobot.org)

PPL: Africa and Madagascar Program, Missouri Botanical Garden, P.O. Box 299, St. Louis, MO 63166-0299, U.S.A. and Institut de Systématique, Evolution, et Biodiversité (UMR 7205 - CNRS MNHN UPMC EPHE), Muséum national d'Histoire naturelle, Sorbonne Universités, C.P. 39, rue Cuvier 57, 75231 Paris CEDEX 05, France

Submitted on October 25, 2016. Accepted on February 15, 2017.

First published online on March 30, 2017.

ISSN: 0373-2967 – Online ISSN: 2235-3658 – *Candollea* 72(1): 45-65 (2017)

© CONSERVATOIRE ET JARDIN BOTANIQUES DE GENÈVE 2017

## Introduction

After more than 20 years of careful field observations, René Capuron published his monumental *Révision des Sapindacées de Madagascar et des Comores* (CAPURON, 1969), in which he enumerated 108 specific and infraspecific taxa of *Sapindaceae* in Madagascar and the Comoro Islands, all of which he had seen as living plants. Among the four new genera and 40 new species described therein was the genus *Beguea* Capuron with its single species, *B. apetala* Capuron. Recent phylogenetic studies of *Sapindaceae* (BUERKI et al., 2009, 2010, 2014) have suggested that *Beguea* belongs in a clade informally referred to as the *Macphersonia* group, which includes other endemic Malagasy genera (*Chouxia* Capuron, *Conchopetalum* Radlk., *Gereaua* Buerki & Callm., *Plagioscyphus* Radlk., *Pseudopteris* Baill., and *Tsingya* Capuron) as well as eastern and southern African *Pappea* Eckl. & Zeyh. and East African/Comorian/Malagasy *Macphersonia* Blume. Within the *Macphersonia* group, *Beguea* is part of an unresolved clade (“clade B”) that also includes *Chouxia*, *Conchopetalum*, *Gereaua*, *Macphersonia*, and *Pseudopteris*; *Beguea* can be distinguished from all of the other genera in the clade by its apetalous flowers. Although *Tsingya* (in “clade A” with *Pappea* and *Plagioscyphus*) also exhibits apetalous flowers, it differs from *Beguea* by its monoecious sexual system (vs dioecious in *Beguea*), flattened, irregularly lobed disc (vs cushion-shaped), stamens inserted into deep holes in the disc (vs stamens inserted interior to the disc), and pear-shaped fruits densely covered with stellate indument (vs spheroid to ellipsoid to obovoid, glabrous or glabrescent fruit) (BUERKI et al., 2014; SCHATZ, 2001). A reevaluation of the character variation in *Beguea*, especially regarding indument, leaf size, and various aspects of the leaflets, leads us to recognize a total of 10 species, nine of which are described as new. Although material of two of the new species (*B. birkinshawii* G.E. Schatz et al. and *B. vulgaris* G.E. Schatz et al.) was available to Capuron but included within his broad concept of *B. apetala*, all material of the remaining seven new species has been gathered since 1992, resulting in a much better understanding of the overall variation in vegetative, floral, and fruit characters within the genus.

A full listing of exsiccatae for each species, with complete localities and latitude/longitude coordinates, as well as images of selected taxa, are available through the MADAGASCAR CATALOGUE (2016). Geographic coordinates indicated in square brackets were assigned *post facto* using available information on Malagasy place names and topographic maps, compiled as a gazetteer of botanical collecting localities in Madagascar [<http://mobot.org/MOBOT/research/madagascar/gazetteer>].

## Taxonomic treatment

*Beguea* Capuron in Mém. Mus. Natl. Hist. Nat., B, Bot. 19: 105. 1969.

**Typus:** *Beguea apetala* Capuron.

Dioecious small to large *trees* with simple or rarely stellate-fasciculate indument. *Leaves* alternate, trifoliolate or paripinnately compound with 4–30 alternate to subopposite, entire leaflets, the rachis usually extending slightly beyond the terminal leaflet giving the impression of an aborted leaflet; pseudostipules absent. Inflorescences axillary, sometimes borne on stems below the leaves (ramiflorous), long racemose. *Flowers* actinomorphic; calyx united basally, (5-)6-7(-8)-lobed; petals absent; disc cushion-shaped, the margin sinuate; stamens 6-8(-10), filaments long, slender, anthers ovate to oblong, laterally dehiscent; staminodia in female flowers resembling short stamens; ovary 3-locular, style longer than the ovary, dividing apically into 3 distinct stigmas, ovule 1 per locule; pistillode in male flowers minute. *Fruit* indehiscent, globose to obovoid, 1-seeded, dry to somewhat fleshy or woody, crowned by the apiculate remnant of the style; seed surrounded by a translucent, fleshy arillode, the hilar scar basal, the cotyledons highly ruminant.

*Notes.* – A genus of ten species, occurring in humid and subhumid forest, rarely in dry forest. The genus name honors the French botanist Louis H. Bégué, who founded the *Service Forestier* collection series in Madagascar.

## Key to the species of *Beguea*

1. Apex of leaflets retuse to deeply emarginate; fruit with mesocarp 3–4.7 mm thick; Andohahela PN..... 3. ***B. australis***
- 1a. Apex of leaflets rounded to acute or acuminate; fruit with mesocarp (when known) less than 2 mm thick..... 2
2. Petiole and leaf rachis covered with tufts of very short golden stellate-fasciculate trichomes..... 3
- 2a. Petiole and leaf rachis glabrous or with persistent indument of simple trichomes..... 4
3. Apex of leaflets acute to acuminate and short-mucronate, the lamina densely punctate above, the margin slightly revolute; inflorescences unbranched..... 7. ***B. galokensis***
- 3a. Apex of leaflets rounded, not mucronate, the lamina not punctate above, the margin strongly revolute; inflorescences sometimes branched..... 4. ***B. betamponensis***
4. Petiole and leaf rachis with dense persistent indument... 5
- 4a. Petiole and leaf rachis glabrous or initially with sparse indument, then glabrescent ..... 9
5. Leaflets conduplicate, usually folded along the midvein in pressed material..... 6
- 5a. Leaflets flat in pressed material..... 7

6. Leaflets 3–14, the base markedly asymmetrical, the margins usually strongly revolute, secondary veins 8–15 per side; widespread, Manakara S to Farafangana..... 2. *B. apetalata*
- 6a. Leaflets 4–6, the base symmetrical, the margins flat and minutely thickened but not revolute, secondary veins 7–10 per side; Montagne des Français..... 6. *B. borealis*
7. Leaflets 6–8, the apex distinctly acuminate, the acumen acute; pedicels c. 1 mm long; anthers 2.2–2.5 mm long; Ankerana..... 1. *B. ankeranensis*
- 7a. Leaflets 7–16, the apex acute or acuminate, the acumen rounded to irregularly or slightly retuse; pedicels 2.5–4 mm long; anthers c. 1 mm long ..... 8
8. Leaflets with secondary veins emerging at a 45° angle to the midvein; inflorescence densely light reddish chocolate tomentose; pedicels slender, 0.2–0.5 mm in diam. in flower, sparsely light chocolate tomentulose, 0.9–1 mm in diam. in fruit, glabrous; sepals c. 0.5 mm long; fruit 1.7–1.8 cm long, c. 1.2 cm in diam., ellipsoid to obovoid; Lokobe PA ..... 5. *B. birkinshawii*
- 8a. Leaflets with secondary veins emerging at a 25° angle to the midvein; inflorescence densely ferruginous tomentose; pedicels stout, 0.7–0.9 mm in diam. in flower, densely ferruginous tomentose, 1.3–1.5 mm in diam. in fruit; sepals c. 1.5 mm long; fruit 2.3–2.8 cm in diam., spheroid; Andohahela, Ranomafana and “Corridor forestier Marojejy-Anjanaharibe Sud-Tsaratana Nord” ..... 9. *B. turkii*
9. Leaflets with a flat margin; calyx glabrous; Tsaratana PA ..... 8. *B. tsaratananensis*
- 9a. Leaflets with a revolute margin; calyx sparsely puberulous outside; widespread, Marojejy PA S to Bemangidy (N of Tolagnaro)..... 10. *B. vulgaris*

1. *Beguea ankeranensis* G.E. Schatz & Lowry, **spec. nova** (Fig. 1, 2A).

**Typus:** MADAGASCAR. **Prov. Toamasina:** Atsinanana Region, Brickaville, Anjahamamay, Anivoranokely, Ankerana forest, 18°24'21"S 48°48'18"E, 700 m, 19.I.2012, fl., *Antilabimena* 7978 (holo-: MO-6704230!; iso-: G [G00341688]!, K!, P [P00580357]! TAN).

*Haec species a congeneris foliorum petiolo rhachideque indumento aurobrunneo tomentulosi, foliolis 6 ad 8 in sicco complanatis apice acute acuminatis, pedicellis c. 1 mm longis atque antheris 2.2–2.5 mm longis distinguitur.*

*Tree* c. 15 m tall; stems densely golden brown tomentulose. Petioles 2.6–4 cm, densely golden brown tomentulose. *Leaves* with 6–8 subopposite to alternate leaflets; rachis 3.8–7 cm, keeled above, golden brown tomentulose; petiolule 2.5–3 mm, golden brown tomentulose; leaflet blade 2.8–7 × 1.2–2.2 cm,

elliptic, papyraceous to subcoriaceous, flat in pressed material, glabrous and only slightly glossy above, sparsely light brown tomentulose on midvein and secondary veins below, base weakly to markedly asymmetrical, acute to nearly decurrent, margins minutely thickened, not revolute, apex distinctly acuminate, the acumen acute, midvein distinctly raised and knife-like above and below, secondary veins (8–)10–13 per side, flat to slightly impressed above, raised below, tertiary venation obscure above, slightly raised and evident below. *Inflorescence* axis 16–19 cm long, c. 1 mm in diam., unbranched, dark chocolate brown, densely golden brown tomentulose; bracts c. 1 mm, narrowly triangular, adaxially concave; pedicels c. 1 mm, c. 0.8 mm in diam., densely golden brown tomentulose. *Male flowers* with a shallowly cupulate, (4–)5-lobed calyx, the lobes broadly triangular, c. 1 × 1.2 mm, acute, densely golden brown tomentulose outside, densely golden setaceous inside; stamens 8, filaments 1–3 mm, glabrous, anthers 2.2–2.5 × c. 0.8 mm, ellipsoid; disc and pistillode densely golden setaceous, the trichomes to 0.5 mm. *Female flowers* not seen. *Fruit* not seen.

*Conservation status.* – Known only from a single collection from well within an intact forest block of the newly designated Corridor Ankeniheny Zahamena PA (Fig. 3), and lacking any additional information on population size, *B. ankeranensis* is assigned a provisional status of “Least Concern” [LC] using the IUCN Red List Criteria (IUCN, 2012), with the caution that this status is highly dependent on continued effective protection.

*Notes.* – *Beguea ankeranensis* is known only from the type collection in humid forest at Ankerana (Fig. 3), which is included within the recently decreed Corridor Ankeniheny Zahamena PA. It can be easily distinguished from the two species most similar morphologically (*B. birkinshawii* and *B. turkii*) by its leaflets with a long-acuminate apex and an acute acumen (vs acute to short acuminate apex and rounded to retuse acumen), short pedicels c. 1 mm long (vs 2.5–4 mm long), and large anthers 2.2–2.5 mm long (vs only 1 mm long) (Fig. 1, 2A).

2. *Beguea apetalata* Capuron in Mém. Mus. Natl. Hist. Nat., B, Bot. 19: 105. 1969. (Fig. 2B).

**Lectotypus** (designated here): MADAGASCAR. **Prov. Toamasina:** Analanjirifo Region, env. de la baie d’Antongil: massif de l’Ambohitsitondroina de Mahalevona, [15°25'S 49°58'E], c. 700 m, XII.1953, fl., *Service Forestier* 8701 (lecto-: P [P00214641]!; isolecto-: G [G00341689]!, K!, L!, MO-6701278!, P [P00137008, P00137009, P00580342]!, TEF [TEF000464]!).



Fig. 1. – *Beguea ankeranensis* G.E. Schatz & Lowry. **A.** Flowering branch; **B.** Detail of flower at anthesis; **C.** Portion of inflorescence axis; **D.** Leaflet (lower surface); **E.** Leaflet (upper surface).  
 [Antilahimena 7978, MO] [Drawing: R.L. Andriamiarisoa]





**Fig. 2.** – Photographs of *Beguea* Capuron. **A.** *Beguea ankeranensis* G.E. Schatz & Lowry; **B.** *Beguea apetala* Capuron; **C.** *Beguea turkii* G.E. Schatz, Gereau & Lowry; **D.** *Beguea vulgaris* G.E. Schatz, Gereau & Lowry.

[**A:** Antilahimena 7978; **B:** Ravelonarivo 3854; **C:** Rakotovao 3648; **D:** Antilahimena 5459] [Photos: **A, C:** P. Antilahimena; **B:** D. Ravelonarivo; **C:** C. Rakotovao]

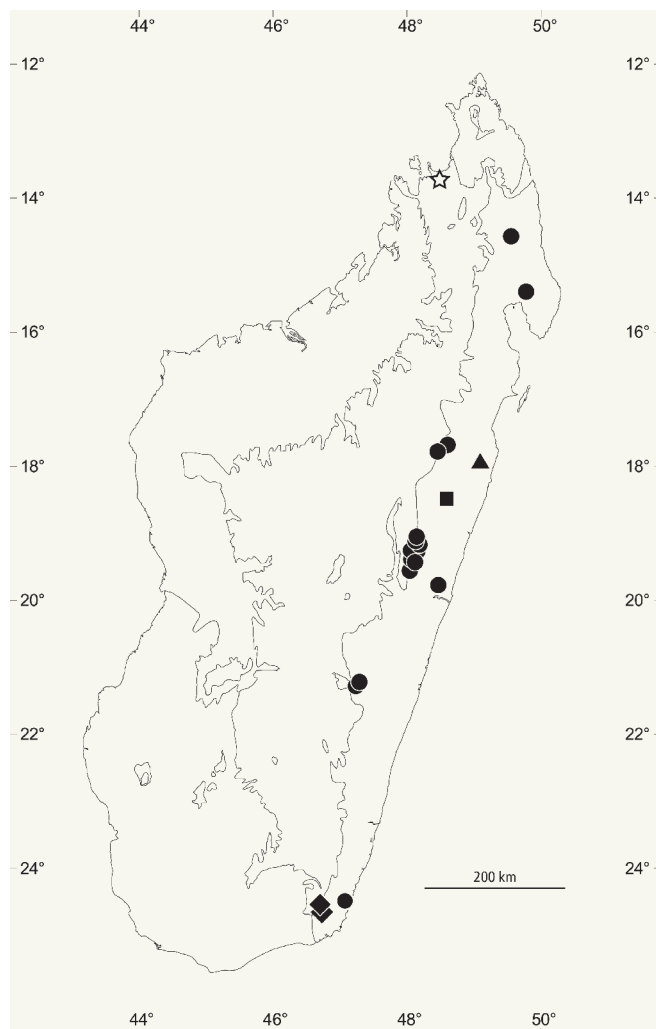


Fig. 3. – Geographic distribution of *Beguea ankeranensis* G.E. Schatz & Lowry (square), *B. australis* G.E. Schatz, Gereau & Lowry (diamond), *B. betamponensis* G.E. Schatz, Gereau & Lowry (triangle), *B. galokensis* G.E. Schatz & Lowry (star) and *B. vulgaris* G.E. Schatz, Gereau & Lowry (circles), mapped on the bioclimatic zones of Madagascar (after CORNET, 1974; see SCHATZ, 2000).

*Tree* to 25 m tall; stems densely golden to whitish tomentulose, glabrescent. *Petioles* 2.5–12.5 cm, densely golden tomentulose. *Leaves* trifoliolate or with 4–14 subopposite to opposite leaflets; rachis 1–19.8 cm, not keeled, densely golden tomentulose; petiolule 2–9 mm, sparsely short white sericeous, glabrescent; leaflet blade 3–15.7 × 1.9–5 cm, elliptic to ovate, subcoriaceous to coriaceous, nearly always conduplicate and folded along the midvein in pressed material, glabrous and glossy above, glabrous below except very sparsely tomentulose at the base, base markedly asymmetrical, cuneate to acute and decurrent along petiolule, margins usually strongly revolute, apex acute to usually long acuminate, the acumen rounded and sometimes minutely emarginate, usually deformed in the

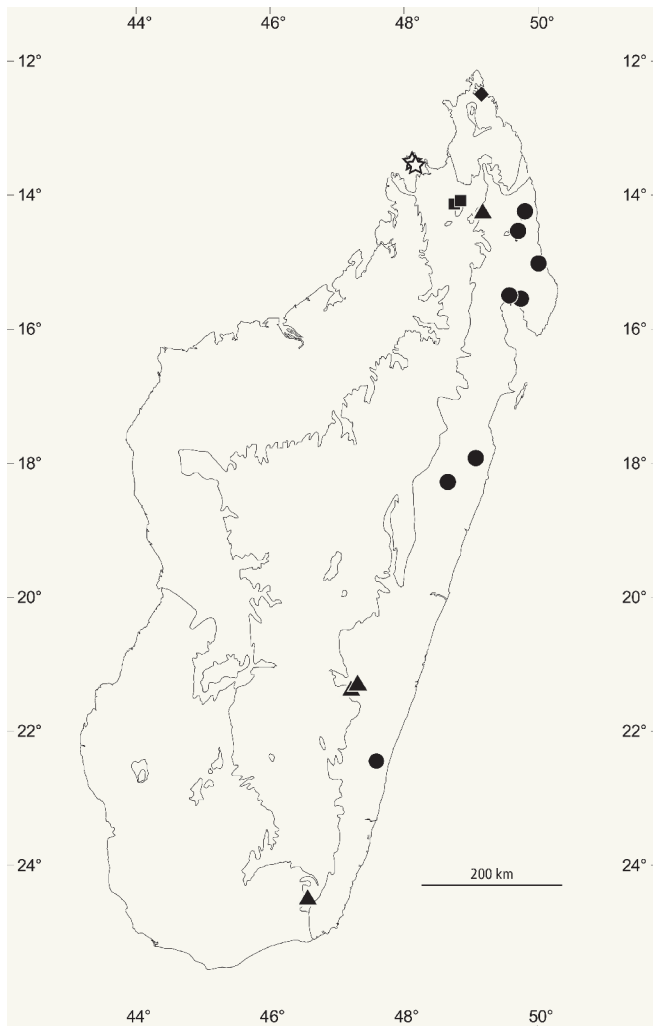
process of pressing, midvein slightly raised above and below, secondary veins 8–15 per side, often not very evident below, flat to slightly raised above and below, tertiary venation evident and raised above. *Inflorescence* axis 2.3–33 cm long, 1–2 mm in diam. at base, unbranched, sparsely tan sericeous; bracts c. 0.2 mm, triangular, adaxially concave; pedicels usually paired on a common peduncle to 1.0 mm, sometimes solitary and epedunculate, 1.5–3.5 mm, c. 0.4 mm in diam., elongating to 6 mm in fruit, moderately to densely golden sericeous. *Male flowers* with a cupulate, 5- to 7-lobed calyx, the lobes 0.2–0.3 × 0.3–0.6 mm, broadly triangular, sparsely tan sericeous outside; disc 1.2 mm in diam., sparsely whitish granular-farinoso; stamens 8 (or 9), filaments c. 2 mm, with sparse spreading trichomes along basal third, anthers 0.7–0.8 × 0.3–0.4 mm, oblong; pistillode 0.2–0.3 mm high, 0.2–0.3 mm in diam., hemispherical, covered with short appressed trichomes. *Female flowers* not seen. *Fruit* spheroid, 1.5–1.8 cm in diam., glabrescent, apex apiculate, fruit wall 0.6–0.8 mm thick; seed flattened ellipsoid, c. 14 × 9 × 7 mm.

*Additional material examined.* – **MADAGASCAR. Prov. Antsiranana:** SAVA Region, Forêt d'Andrakaraka, au SSW d'Antalaha, [14°53'S 50°15'E], 22.IX.1954, fr., *Service Forestier* 9233 (MO, P, TEF); env. de Lohanantsahabe (haut Antsahabe, affluent rive gauche de la Lokoho) entre Sambava et Andapa, [14°26'S 49°56'E], 19.X.1966, fr., *Service Forestier* 24936 (MO, P, TEF); env. S de Tsaratanana, entre Nosiarina et Antsirabe-Nord (route Sambava-Vohemar), [14°06'15"S 50°00'45"E], 1.IV.1967, fl., *Service Forestier* 27655 (MO, P, TEF). **Prov. Fianarantsoa:** Atsimo-Atsinanana Region, vestiges de forêts entre Farafangana et Manakara, [22°29'S 47°48'E], 30.VI.1954, fr., *Service Forestier* 9212 (MO, P, TEF). **Prov. Toamasina:** Atsinanana Region, Betampona, 17°55'16" S 49°12'33"E, 300 m, 20.XI.2005, fr., *Buerki* 149 (G, MO); Alaotra-Mangoro Region, Zahamena PN, forêt d'Ambavala, à 5 km au SE du village d'Ankosal, 17°32'32"S 48°43'30"E, 1250 m, 30.XI.2002, fl., *Randrianjanaka* 756 (CNARP, G, L, MO, P, TAN); Atsinanana Region, Maroseranana, Ambodilendemy, forêt de Vohimanana, 18°24'33"S 48°47'33"E, 1155 m, 25.III.2011, fr., *Ravelonarivo et al.* 3854 (G, MO, P, TAN); Analanjirofo Region, de la baie d'Antongil, massif de Farankaraina, entre Navana et Andranofotsy, [15°23'S 49°51'E], 20.IX.1957, fr., *Service Forestier* 18347 (P, TEF).

*Vernacular names.* – “Fandifiana”, “Somotororana”.

*Conservation Status.* – *Beguea apetala* is known from eight widely dispersed localities from between Farafangana and Manakara to north of Sambava (Fig. 4). Its geographic range comprises an extent of occurrence (EOO) of 26,017 km<sup>2</sup> and an area of occupancy (AOO) possibly greater than 2,000 km<sup>2</sup> given the amount of potential suitable habitat within the EOO, and it is present in two protected areas, Betampona Strict Nature Reserve and Masoala National Park. Continuing decline in habitat quality as a result of ongoing forest exploitation and clearing for agriculture at unprotected sites is projected. As the threshold for “Vulnerable” [VU] is nearly met with respect to EOO, we therefore assign a preliminary assessment of “Near Threatened” [NT] using the IUCN Red List Criteria (IUCN, 2012).





**Fig. 4.** – Geographic distribution of *Beguea apetala* Capuron (circles), *B. birkinshawii* G.E. Schatz, Gereau & Lowry (stars), *B. borealis* G.E. Schatz & Lowry (diamond), *B. tsaratananensis* G.E. Schatz, Gereau & Lowry (squares) and *B. turkii* G.E. Schatz, Gereau & Lowry (triangles), mapped on the bioclimatic zones of Madagascar (after CORNET, 1974; see SCHATZ, 2000).

*Notes.* – *Beguea apetala* is here restricted to material matching the type, with leaflets that are glabrous except at the very base beneath, are noticeably conduplicate in living material (Fig. 2B) and thus usually folded on herbarium specimens, and have revolute margins and raised tertiary venation above, as well as a distinctly long acuminate apex that is deformed to one side in the process of pressing the specimens. The number of leaflets is quite variable, ranging from 3 to 14.

**3. *Beguea australis* G.E. Schatz, Gereau & Lowry, spec. nova** (Fig. 5).

**Typus:** MADAGASCAR. **Prov. Toliara:** Anosy Region, RNI Andohahela, Parcelle 1, Ambahibe, Isaka Ivondro, 24°47'S 46°50'E, 0–500 m, 10–27.IX.1993, fr., *Randriamampionona* 633 (holo-: MO-6641487!; iso-: BM!, C!, CAS!, E!, G [G00341687]!, K!, L!, M!, NY!, P [P00580343]!, PRE!, TAN!, UPS!, US!).

*Haec species a congeneris foliis ad apicem retusis usque profunde emarginatis atque fructu lignoso mesocarpio 3–4.7 mm crasso distinguitur.*

*Tree* to 20 m tall, bole c. 20 cm in diam.; stems densely light reddish tan tomentose. *Petioles* 7.5–10 cm, densely light reddish tan tomentose. *Leaves* with 12–30 alternate to subopposite leaflets; rachis 18–21 cm, densely light reddish tan tomentose, not keeled; petiolule 2–7 mm, densely light reddish tan tomentose; leaflet blade 4.6–12.6 × 2.4–4.4 cm, elliptic to narrowly obovate, chartaceous to subcoriaceous, flat in pressed material, glabrous and somewhat glossy and verrucose above, initially reddish tomentose below, glabrescent or indument persistent close to the midvein below, base asymmetrical, cuneate to attenuate and decurrent along petiolule, margins flat, apex retuse to deeply emarginate, the notch to 1 cm deep and often with straight sides (“v”-notched), midvein flat to raised towards the base above, initially densely light brown tomentose, glabrescent, distinctly raised below, persistently light reddish brown tomentose, secondary veins 8–13 per side, slightly raised above and below, initially reddish tomentose below, glabrescent, tertiary venation slightly raised above and below. *Flowers* unknown. *Infructescence* axis 5.6–15.4 cm long, 2.8–3.5 mm in diam., unbranched, densely light reddish tan tomentose; pedicels in fruit 3–4 mm, c. 1.1 mm in diam., reddish tomentose. *Fruit* ellipsoid, 1.4–3.1 cm long, 1.1–2.3 cm in diam, glabrous, apex acute and slightly curved, sometimes with an apiculum to 1 mm, mesocarp (fruit wall) 3–4.7 mm thick, rendering the fruits hard and woody; seed flattened ellipsoid, 5–17 × c. 13 × c. 12 mm.

*Etymology.* – The epithet *australis* refers to the southernmost occurrence of the genus *Beguea* in Madagascar.

*Conservation status.* – Despite the very restricted Area of Occupancy within well-protected Andohahela National Park (Fig. 4), there appear to be no current threats, and thus *Beguea australis* is assigned a status of “Least Concern” [LC] using the IUCN Red List Criteria (IUCN, 2012), with the caution that this status is highly dependent on continued effective protection.





Fig. 5. – *Beguea australis* G.E. Schatz, Gereau & Lowry. **A.** Fruiting branch; **B.** Leaflet (lower surface); **C.** Leaflet (upper surface); **D.** Fruit (with close-up of surface); **E.** Section of fruit. [*Randriamampionona* 633, MO] [Drawing: R.L. Andriamiarisoa]

*Notes.* – *Beguea australis* is known from only two collections made in humid forest at Andohahela National Park (Fig. 4). It can be easily recognized from all other species of *Beguea* by its large leaves with 12–30 leaflets whose apex is usually deeply emarginate, and its large woody fruits with a wall 3–4.7 mm thick (Fig. 5).

*Paratypi.* – **MADAGASCAR. Prov. Toliara:** Anosy Region, RNI 11, Andohahela, Parcelle 1, Isaka Ivondro, 24°40'S 46°52'E, 100–500 m, 12–23.VI.1993, fr., *Randriamampionona 454* (BM, G, K, MO, NY, P, TAN, US).

**4. *Beguea betamponensis* G.E. Schatz, Gereau & Lowry, *spec. nova* (Fig. 6).**

**Typus:** **MADAGASCAR. Prov. Toamasina:** Atsinanana Region, RNI de Betampona, piste principale, 17°55'S 49°13'E, 300–400 m, 30.XI.1994, fl., *Andrianarisata et al. 246* (holo-: MO-6704232!; iso-: P [P06168886]! TAN!).

*Haec species a congeneris indumento stellato-fasciculato, foliolis coriaceis marginibus valde revolutis apice rotundatis atque inflorescentia raro ramosa distinguitur.*

*Tree* c. 13 m tall; young stems with dense golden stellate-fasciculate indument, glabrescent. *Petioles* 2.8–5.4 cm, with sparse strongly appressed golden stellate indument. *Leaves* with 3–8 subopposite to alternate leaflets; rachis 2.7–10 cm, keeled above, glaucous with sparse, strongly appressed golden stellate indument; petiolule 1–5 mm or leaflets sometimes sessile, with sparse golden stellate-fasciculate indument, glabrescent; leaflet blade 3.2–10 × 1.5–3.5 cm, oblanceolate to occasionally elliptic, very coriaceous, flat in pressed material, glabrous and glossy above, glabrous and dull below, base asymmetrical, acute to cuneate, margins strongly revolute with up to 3 mm rolled under in dried material, apex rounded, midvein slightly raised above, distinctly raised below, slightly glaucous, with sparse appressed golden stellate indument, secondary veins 12–16 per side, flat to slightly impressed above, raised below, tertiary venation slightly raised and evident above. *Inflorescence* axis 6–19 cm, unbranched, or bifurcating towards the apex, reddish, essentially glabrous with very sparse golden stellate-fasciculate indument; bracts c. 0.3 mm, triangular; pedicels 2.5–3.5 mm, 0.3–0.4 mm in diam., densely golden strigulose and also with appressed golden stellate-fasciculate trichomes. *Male flowers* with a cupulate, 5- or 6-lobed calyx, the lobes c. 0.5 × 0.5 mm, triangular, acute, glabrous outside, densely golden setaceous inside; stamens 8, filaments c. 4.5 mm, glabrous except for sparse trichomes toward the base, anthers c. 1.1 × 0.4 mm, ellipsoid; disc and pistillode densely golden setaceous, the trichomes to 0.5 mm. *Female flowers* not seen. *Fruit* not seen.

*Conservation status.* – Although *Beguea betamponensis* is known only from the fairly well-protected Betampona Strict Nature Reserve (Fig. 4), its current status with regard to population size and reproduction, and also the potential negative impact from invasive strawberry guava (*Psidium cattleianum* Sabine), is unknown. With a restricted AOO and the potential threat from such an aggressive invasive, which could rapidly push the species to “Critically Endangered” or “Extinct” status, *B. betamponensis* is here assigned the category of “Vulnerable” [VU D2] using the IUCN Red List Criteria (IUCN, 2012).

*Notes.* – *Beguea betamponensis* is known only from the type collection in humid forest at the Betampona Strict Nature Reserve (Fig. 7), where it is sympatric with *B. apetala*. It can be easily distinguished from *B. galokensis*, with which it shares an indument of tufts of very short golden stellate-fasciculate trichomes, by its very coriaceous leaflets with strongly revolute margins, rounded apex lacking a mucro, and impressed secondary veins (vs subcoriaceous leaflets with slightly revolute margins, acute to acuminate apex with a distinct mucro, and flat to slightly raised secondary veins) and its occasionally branched inflorescences (vs unbranched inflorescences) (Fig. 6).

**5. *Beguea birkinshawii* G.E. Schatz, Gereau & Lowry, *spec. nova* (Fig. 7).**

**Typus:** **MADAGASCAR. Prov. Antsiranana:** DIANA Region, RNI 6, Lokobe, S side of reserve, 5 km SE of Hell Ville, Nossi Be, 13°25'S 48°18'E, 200 m, 31.VIII.1992, fl., *Birkinshaw 159* (holo-: MO-04958842!; iso-: G [G00341316]!, P [P06168881]!, TAN!).

*Haec species a congeneris caulibus petiolis folioli costa et inflorescentiae axe indumento cacao-brunneo tomentulosis atque pedicellis gracilibus distinguitur.*

*Tree* 8–20 m tall, bole to 35 cm in diam; stems densely light chocolate brown tomentulose. *Petioles* 4.3–7.3 cm, channeled, densely light chocolate brown tomentulose. *Leaves* with 10–14 subopposite to alternate leaflets; rachis 8.5–14 cm, not keeled, densely light chocolate brown tomentulose; petiolule 2–5 mm, densely light chocolate brown tomentulose; leaflet blade 3.5–10.1 × 1.3–2.5 cm, lanceolate to ovate, chartaceous, flat in pressed material, glabrous and glossy and sometimes verrucose above, glabrous and somewhat glaucous below, base asymmetrical, cuneate to attenuate, margins flat, apex acuminate, the acumen rounded to irregularly retuse, midvein flat to slightly raised towards the base above, initially light chocolate-ferruginous tomentulose, glabrescent, distinctly raised below, persistently light chocolate-ferruginous tomentulose, secondary veins 12–16 per side, flat to slightly impressed above,



Fig. 6. – *Beguea betamponensis* G.E. Schatz, Gereau & Lowry. **A.** Flowering branch; **B.** Portion of inflorescence axis; **C.** Detail of flower at anthesis. [Andrianarisata et al. 246, MO] [Drawing: R.L. Andriamiarisoa]





**Fig. 7.** – *Beguea birkinshawii* G.E. Schatz, Gereau & Lowry. **A.** Flowering branch; **B.** Detail of flower at anthesis; **C.** Portion of inflorescence axis. [Birkinshaw 159, MO] [Drawing: R.L. Andriamiarisoa]

raised below, tertiary venation reticulate, slightly raised and evident above. *Inflorescence* axis 4–18.5 cm long, c. 1.5 mm in diam., unbranched, densely light reddish chocolate tomentose, bracts minute, < 0.1 mm; pedicels 2.5–3.5 mm, 0.2–0.5 mm in diam., sparsely light chocolate tomentulose. *Male flowers* with a cupulate, 5-lobed calyx, the lobes c. 0.5 × 0.5 mm, triangular, sparsely light chocolate tomentulose; stamens 8, filaments c. 4.5 mm, glabrous, anthers c. 1 × 0.5 mm, ellipsoid; disc c. 1.2 mm in diam., sparsely whitish granular–farinose; pistillode c. 0.5 mm, conical, densely golden hirsute. *Female flowers* not seen. *Infructescence* 12–16 cm, c. 1.5 mm in diam., densely light reddish chocolate tomentose; pedicels 4–5 mm, 0.9–1 mm in diam. in fruit, glabrous. *Fruit* ellipsoid to obovoid, 1.7–1.8 cm, c. 1.2 cm in diam., glabrous to sparsely whitish granular farinose at the base and apex, base obtuse, apex rounded, apiculate, the apiculum c. 0.7 mm, fruit wall c. 0.8 mm thick; seed flattened ellipsoid, c. 10 × 7 × 3.5 mm.

*Etymology.* – The epithet *birkinshawii* honors Chris Birkinshaw, who collected the type material while conducting his thesis work in the Lokobe reserve, and who has been an inspirational leader of plant conservation efforts in Madagascar.

*Conservation status.* – Despite the very restricted AOO within the well-protected Lokobe Special Reserve (Fig. 4), there appear to be no current threats, and thus *Beguea birkinshawii* is assigned a status of “Least Concern” [LC] using the IUCN Red List Criteria (IUCN, 2012), with the caution that this status is highly dependent on continued effective protection.

*Notes.* – *Beguea birkinshawii* is known only from subhumid forest in the Lokobe Special Reserve on the island of Nossi Be (Fig. 4). It can be distinguished from *B. turkii*, the species most similar morphologically, by its slender pedicels (0.2–0.5 mm in diam. in flower, 0.9–1 mm in diam. in fruit vs 0.7–0.9 mm in diam. in flower, 1.3–1.5 mm in diam. in fruit), smaller sepals (c. 0.5 mm vs c. 1.5 mm long), and smaller ellipsoid to obovoid fruit (1.7–1.8 cm long, c. 1.2 cm in diam vs globose fruit 2.3–2.8 cm in diam) (Fig. 7).

*Paratypes.* – MADAGASCAR. **Prov. Antsiranana:** DIANA Region, Sambirano, forêt du Lokobe (Nosy Be), [13°25'S 48°18'E], 2.XI.1954, fr., *Service Forestier 11412* (P); *ibid. loc.*, 2.XI.1954, fl., *Service Forestier 11415* (P).

6. *Beguea borealis* G.E. Schatz & Lowry, **spec. nova** (Fig. 8).

**Typus:** MADAGASCAR. **Prov. Antsiranana:** DIANA Region, Montagne des Français, forêt d’Ampitiliantsambo, à 3 h. de marche à pied, à l’E d’Andranomanitra, 12°23'13"S 49°23'04"E, 205 m, 14.I.2005, fl., *Randrianaivo et al. 1163* (holo-: P [P04765740]!; iso-: MO, TAN!).

*Haec species a congeneris caulibus petiolis petiolulisque indumento aureo dense tomentulosis atque foliolis conduplicatis 4 ad 6 venis secundariis in quoque latere 7 ad 10 distinguitur.*

*Tree* c. 12 m tall, bole c. 15 cm in diam.; stems densely golden tomentulose, glabrescent. *Petioles* 1.7–3.6 cm, densely golden tomentulose. *Leaves* with 4–6 subopposite to opposite leaflets; rachis 0.2–2.1 cm, not keeled, densely golden tomentulose; petiole 2–4 mm, light gray-tan tomentulose; leaflet blade 3.3–4.6 × 1.6–2.4 cm, elliptic (occasionally very slightly ovate or obovate), subcoriaceous, nearly always conduplicate and folded along the midvein in pressed material, glabrous and glossy above, glabrous below except very sparsely tomentulose at the base, base symmetrical, cuneate to acute, margins flat, minutely thickened but not revolute, apex acuminate, the acumen rounded, midvein flat above, sparsely tomentulose, raised below, sparsely tomentulose towards the base, secondary veins 7–10 per side, slightly raised above and below, tertiary venation raised on both surfaces. *Inflorescence* axis 1.5–9.7 cm long, c. 1 mm in diam. at base, unbranched, sparsely tan sericeous; bracts c. 0.2 mm, triangular, adaxially concave; pedicels usually paired on a common peduncle to 1 mm, sometimes solitary and epedunculate, 0.5–1.5 mm, moderately to densely tan sericeous. *Male flowers* with a cupulate, 5- to 7-lobed calyx, the lobes 0.2–0.3 × 0.3–0.6 mm, broadly triangular, sparsely tan sericeous outside; disc glabrous to sparsely white granular–farinose; stamens 8 (or 9), filaments c. 2 mm, with sparse spreading trichomes along basal third, anthers 0.7–0.8 × 0.3–0.4 mm, oblong; pistillode 0.2–0.3 mm high, 0.2–0.3 mm in diam., hemispherical, covered with short appressed trichomes. *Female flowers* not seen. *Fruit* not seen.

*Etymology.* – The epithet *borealis* refers to the northernmost occurrence of the genus *Beguea* in Madagascar.

*Vernacular name.* – “Gavoala”.

*Conservation status.* – While *Beguea borealis* occurs within the recently decreed Montagne des Français (Ambohitr’Antsingy) protected area, it was collected adjacent to a clearing used as pasture and subject to potential burning, threats that may continue despite the new protected status. Therefore, with a restricted AOO and plausible threats that could rapidly push the species to Critically Endangered or Extinct status, *B. borealis* warrants a preliminary assessment of “Vulnerable” [VU D2] using the IUCN Red List Criteria (IUCN, 2012).



**Fig. 8.** – *Beguea borealis* G.E. Schatz & Lowry. **A.** Flowering branch; **B.** Leaflet (lower surface); **C.** Portion of inflorescence axis; **D.** Two flowers (one with filaments only partially expanded); **E.** Detail of flower at anthesis. [Randrianaivo et al. 1163, P]. [Drawing: R.L. Andriamiarisoa]



*Notes.* – *Beguea borealis* is known only from the type specimen from the Forêt d'Ampitiliantsambo within the Montagne des Français massif (Fig. 4). It can be distinguished from *B. apetala*, with which it shares conduplicate leaflets that are usually folded along the midvein in pressed material, by its leaflets with a symmetrical base, the margins flat and minutely thickened but not revolute (vs leaflets with a distinctly asymmetrical base and strongly revolute margins) (Fig. 8).

7. *Beguea galokensis* G.E. Schatz & Lowry, **spec. nova** (Fig. 9).

**Typus:** MADAGASCAR. **Prov. Antsiranana:** DIANA Region, Ambilobe, Beramanja, Anketrahe Belinta, forêt de Galoko, riv. Andohaniambahatra, 13°35'17"S 48°42'43"E, 336 m, 5.X.2013, fl., *Manjato et al. 454* (holo-: MO-6701389!; iso-: G, K, P [P01060305]!, TAN!).

*Haec species a congeneris foliorum petiolis rhachidibus petiolulisque trichomatium aureorum perbreveium stellato-fasciculatum caespitibus dense indutis atque foliolorum lamina adaxialiter dense punctata apice breviter mucronata distinguitur.*

*Tree* c. 7 m tall; stems densely light brown tomentulose, glabrescent. *Petioles* 3.5–7.5 cm, densely covered with tufts of very short, golden stellate-fasciculate trichomes. *Leaves* with 4–14 alternate to sub-opposite leaflets; rachis 0.8–16.6 cm, keeled above, densely covered with tufts of very short golden stellate-fasciculate trichomes; petiolule 3–5 mm, densely covered with tufts of very short golden stellate-fasciculate trichomes; leaflet blade 3.7–10.6 × 1.3–2.3 cm, narrowly elliptic, subcoriaceous, flat in pressed material, glabrous and glossy and densely punctate above, glabrous below, base markedly asymmetrical, attenuate to cuneate to rarely acute, margins slightly revolute, apex acute to acuminate, the acumen rounded and often with a short mucro, midvein raised above and below, sparsely covered with tufts of very short golden stellate-fasciculate trichomes on both sides, secondary veins 13–17 per side, flat to slightly raised above and below, tertiary venation flat on both surfaces. *Inflorescence* axis 4.3–17 cm long, c. 1 mm in diam., unbranched, moderately covered with tufts of very short golden stellate-fasciculate trichomes; bracts c. 0.5 mm, triangular, flat, caducous; pedicels usually paired on a common peduncle to 0.5 mm, sometimes solitary and epedunculate, 2–4 mm, moderately to densely covered with tufts of very short golden stellate-fasciculate trichomes. *Male flowers* with a cupulate, 5-lobed calyx, the lobes broadly triangular, 0.3–0.6 × 0.2–0.5 mm, moderately covered with tufts of very short golden stellate-fasciculate trichomes outside; disc obscured by the pistillode; stamens 7–9, filaments c. 2.8 mm, with sparse spreading trichomes along basal half, anthers 1.0–1.1 × 0.6–0.8 mm, oblong; pistillode 0.2–0.3 mm high, 0.2–0.3 mm in

diam., hemispherical to depressed hemispherical, disc 0.3–0.5 mm high, 1 mm in diam., densely covered with stiff erect golden trichomes to 0.4 mm long. *Female flowers* not seen. *Fruit* not seen.

*Conservation status.* – While *Beguea galokensis* occurs within the recently decreed Galoko-Kalobinono protected area (Fig. 3), it was collected adjacent to a clearing used as pasture and subject to potential burning, threats that may continue despite the new protected status. Therefore, with a restricted AOO and plausible threats that could rapidly push the species to Critically Endangered or Extinct status, *B. galokensis* warrants a preliminary assessment of “Vulnerable” [VU D2] using the IUCN Red List Criteria (IUCN, 2012).

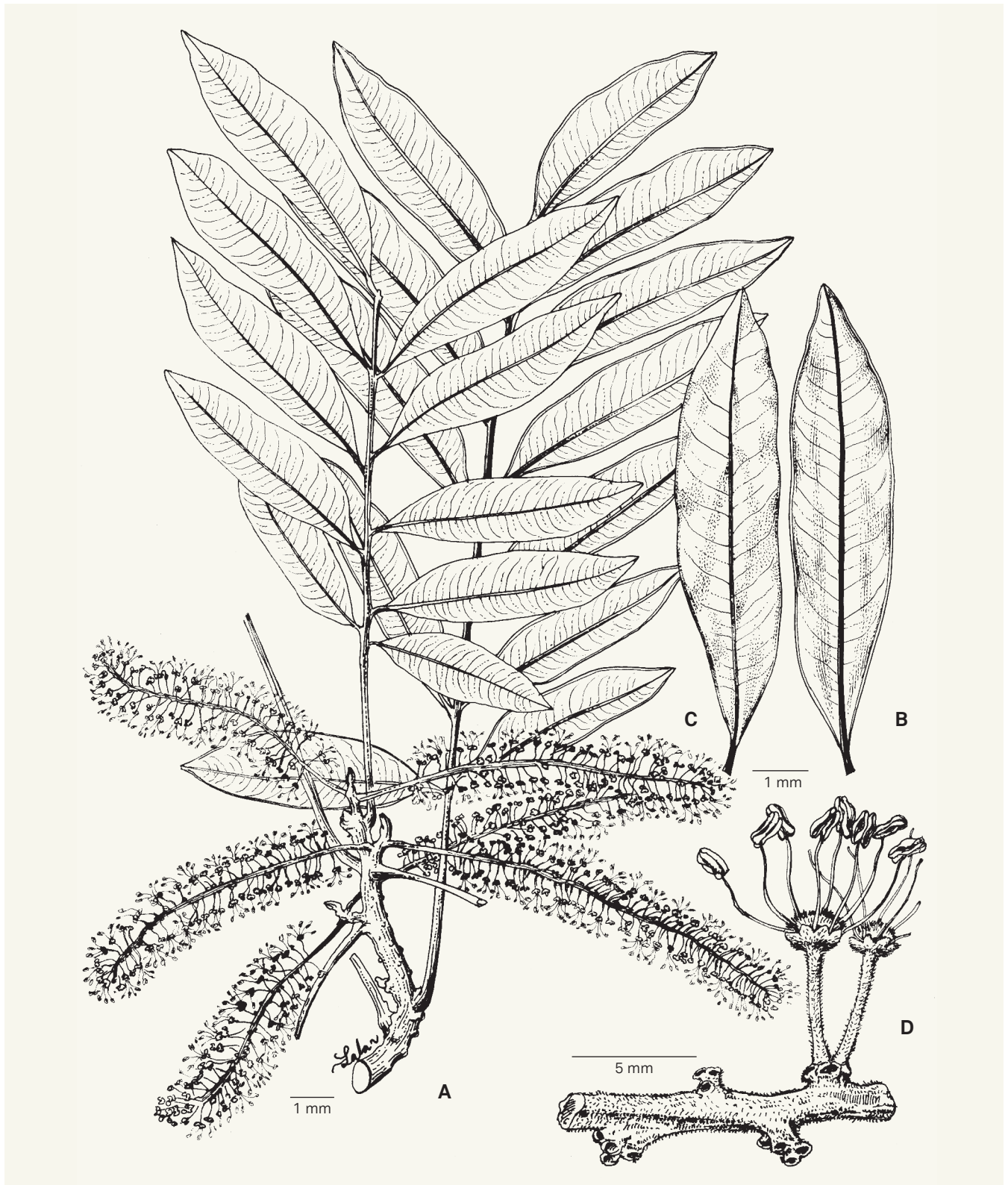
*Notes.* – *Beguea galokensis* is known only from the type specimen from the Forêt de Galoko, a site of high local endemism from which a number of new species have been recently described, including *Canarium galokense* Daly, Raharim. & Federman (DALY et al., 2015), *Micronychia benono* Randrian. & Lowry (RANDRIANASOLO & LOWRY, 2009) and *Polyscias wohlhauseri* Lowry & Callm. (CALLMANDER et al., 2009) (Fig. 3). It can be easily distinguished from *B. betamponensis*, with which it shares an indument of tufts of very short golden stellate-fasciculate trichomes, by its subcoriaceous leaflets with slightly revolute margins, acute to acuminate apex with a distinct mucro, and flat to slightly raised secondary veins (vs very coriaceous leaflets with strongly revolute margins, rounded apex lacking a mucro, and impressed secondary veins) and its unbranched inflorescence (vs occasionally branched inflorescence) (Fig. 9).

8. *Beguea tsaratananensis* G.E. Schatz, Gereau & Lowry, **spec. nova** (Fig. 10).

**Typus:** MADAGASCAR. **Prov. Antsiranana:** DIANA Region, Tsaratanana Massif, southern slopes, 14°03'26"S 48°55'29"E, 1622 m, 2.XI.2000, fl., *Antilahimena 631* (holo-: MO-6641488!; iso-: BM, G!, K!, L!, P [P06168857]!, TAN!).

*Haec species a congeneris caulibus petiolis et foliis rhachide dense breviterque aureo-sericeis (petiolis rhachideque deinde glabrescentibus), foliolis in sicco complanatis marginibus non revolutis costa abaxialiter parce sericeis apice acutis acuminatisve atque sepalis glabris distinguitur.*

*Tree* to 14 m tall, bole c. 19 cm in diam.; stems densely golden short sericeous. *Petioles* 2.3–6.6 cm, densely golden short sericeous, glabrescent. *Leaves* trifoliolate or with 4–11 subopposite to alternate leaflets; rachis 2.2–11.7 cm, not keeled, initially densely short golden sericeous, glabrescent; petiolule



**Fig. 9.** – *Beguea galokensis* G.E. Schatz & Lowry. **A.** Flowering branch; **B.** Leaflet (lower surface); **C.** Leaflet (upper surface); **D.** Portion of inflorescence axis with two flowers.

[Manjato et al. 454, P] [Drawing: R.L. Andriamiarisoa]



Fig. 10. - *Beguea tsaratananensis* G.E. Schatz, Gereau & Lowry. **A.** Flowering branch; **B.** Portion of inflorescence axis; **C.** Detail of flower at anthesis. [Antilahimena 631, MO] [Drawing: R.L. Andriamiarisoa]



2–9 mm, sparsely short golden sericeous, glabrescent; leaflet blade 3.8–12.5 × 1.7–3.9 cm, ovate to lanceolate, chartaceous, flat in pressed material, glabrous and slightly glossy and somewhat verrucose above, glabrous and dull below, base asymmetrical, cuneate to attenuate and decurrent along petiolule, margins flat, apex acute to acuminate, midvein raised and knife-like above, glabrous, raised below, sparsely short sericeous, secondary veins 12–17 per side, flat to slightly raised above, flat below, tertiary venation slightly raised above, flat below. *Inflorescence* axis 3–12 cm long, 0.9–1 mm in diam., unbranched, densely golden ferruginous strigulose; bracts minute, c. 0.2 mm, narrowly triangular; pedicels 0.5–1.5 mm, c. 0.2 mm in diam., densely golden ferruginous strigulose. *Male flowers* with a cupulate, 5- or 6-lobed calyx, the lobes c. 1.0 × 0.5 mm, triangular, glabrous; stamens usually 7 (rarely 6 or 8), filaments 1.8–4.5 mm, glabrous, anthers c. 1 × 0.5 mm, ellipsoid; disc 1.6 mm in diam., densely white granular–farinose; pistillode 0.6 mm tall, conical, densely ferruginous setaceous. *Female flowers* not seen. *Fruit* not seen.

*Conservation status.* – Despite the very restricted AOO based upon two localities within the well-protected Tsaratanana Strict Nature Reserve (Fig. 4), there appear to be no current threats, and thus *B. tsaratananensis* is assigned a status of “Least Concern” [LC] using the IUCN Red List criteria (IUCN, 2012), with the caution that this status is highly dependent on continued effective protection.

*Notes.* – *Beguea tsaratananensis* is known only from two collections from the Tsaratanana massif (Fig. 4). It can be recognized from other members of the genus by the short, dense, golden sericeous indument of the stems, young petioles and leaf rachises, the non-folded leaflets with flat margins and the midrib sparsely sericeous beneath, and the glabrous sepals of the male flowers. It can be distinguished from the morphologically similar *B. vulgaris* by its leaflets with flat (vs revolute) margins and glabrous (vs puberulous) sepals (Fig. 11).

*Paratypes.* – MADAGASCAR. **Prov. Antsiranana:** DIANA Region, Tsaratanana RNI, Fokontany Beangona, à 8 km E de Beangona, Antsahamanara, 14°02'50"S 48°47'09"E, 1408 m, 29.XI.2000, fl., *Razakamalala, Ratovoson & Antonjara* 32 (G, K, L, MO, P, TAN).

9. *Beguea turkii* G.E. Schatz, Gereau & Lowry **spec. nova** (Fig. 2C, 11).

**Typus:** MADAGASCAR. **Prov. Fianarantsoa:** Vatovavy-Fitovinany Region, Ranomafana National Park, parcelle 3, S of National Road 25 at 7 km W of Ranomafana, Vatoharanana trail system, 21°17'S 47°26'E, 1100–1250 m, 3.XII.1992, fl., *Turk & Solo* 192 (holo-: MO-05035874!; iso-: P [P00214653]!, TAN!).

*Haec species a congeneris caulibus petiolis folii rhachide petiolulis folioli costa inflorescentiae axe et pedicellis indumento ferrugineo dense tomentosis atque pedicellis crassis distinguitur.*

*Trees* 10–17 m tall, bole to 17 cm diam.; stems densely ferruginous tomentose, glabrescent. *Petioles* 2.3–5.5 cm, densely ferruginous tomentose. *Leaves* with 7–16 subopposite to alternate leaflets; rachis 2.8–12.2 cm, not keeled, densely ferruginous tomentose; petiolule 1–3 mm, swollen, densely ferruginous tomentose; leaflet blade 1.8–8.1 × 0.8–2.3 cm, lanceolate to narrowly oblong, chartaceous to subcoriaceous, flat in pressed material, glabrous above, initially ferruginous tomentose below, glabrescent, base markedly asymmetrical, margins slightly revolute, apex acuminate, the acumen rounded to sometimes slightly retuse, midvein raised above, initially densely ferruginous tomentose, glabrescent, raised below, persistently densely ferruginous tomentose, secondary veins 14–21 per side, ascending at an angle of 25° from the midvein, slightly raised above and below, tertiary veins finely reticulate, slightly raised above and below. *Inflorescence* axis 8–15 cm long, 1.5–2.5 mm in diam., unbranched, densely ferruginous tomentose; bracts 0.7–1 mm, triangular, adaxially concave; pedicels 3–4 mm, 0.7–0.9 mm in diam., densely ferruginous tomentose. *Male flowers* with a cupulate, 5- or 6-lobed calyx, the lobes c. 1.5 × 0.5 mm, erect and curved inwards slightly, densely ferruginous tomentose outside, glabrous inside; disc c. 1.5 mm in diam., drying dark, glabrous to sparsely golden granular–farinose; stamens 6–8, filaments 3–4 mm, glabrous, anthers c. 1 × 0.5 mm, ellipsoid. *Female flowers* not seen. *Infructescence* 7.5–8.2 cm, c. 2 mm in diam., densely ferruginous tomentose; pedicels 1.3–1.5 mm in diam. in fruit, densely ferruginous tomentose. *Fruit* spheroid, glabrous, 2.3–2.8 cm in diam., abruptly apiculate, the apiculum c. 1 mm; the fruit wall c. 1 mm thick; seed discoid, 12–14 mm in diam., c. 0.5 cm thick.

*Etymology.* – The epithet *turkii* honors Dan Turk, who has significantly advanced our knowledge of the trees of Ranomafana National Park, and who continues to promote the cultivation of indigenous Malagasy trees.

*Conservation status.* – *Beguea turkii* has a restricted range size (Fig. 4), with an EOO of 8,550 km<sup>2</sup> and an AOO of less than 500 km<sup>2</sup>. While there may be no current threats at its locations in Andohahela and Ranomafana National Parks,



Fig. 11. – *Beguea turkii* G.E. Schatz, Gereau & Lowry. **A.** Flowering branch; **B.** Portion of inflorescence axis; **C.** Detail of flower at anthesis; **D.** Infructescence axis with fruits; **E.** Seed.

[A-C: Turk & Solo 192, MO; D: Rakotomalaza 492, MO] [Drawing: R.L. Andriamiarisoa]

continuing decline in the quality of the habitat from forest exploitation and clearing can be projected at the northern SAVA location southwest of the village of Morafeno along the boundary of the “Corridor forestier Marojejy-Anjanaharibe Sud-Tsaratanana Nord”. Therefore, *B. turkii* is assigned a preliminary status of “Endangered” [EN B2ab(iii)] using the IUCN Red List Criteria (IUCN, 2012).

*Notes.* – *Beguea turkii* is known from three widely dispersed locations in mid-elevation subhumid forest (Fig. 4). It can be distinguished from *B. birkinshawii*, the species most similar morphologically, by its stout pedicels (0.7–0.9 mm in diam. in flower, 1.3–1.5 mm in diam. in fruit vs 0.2–0.5 mm in diam. in flower, 0.9–1 mm in diam. in fruit vs), larger sepals (c. 1.5 mm vs c. 0.5 mm long), and larger spheroid fruit (2.3–2.8 cm in diam vs ellipsoid to obovoid and 1.7–1.8 cm long, c. 1.2 cm in diam) (Fig. 11).

*Paratypes.* – MADAGASCAR. **Prov. Antsiranana:** SAVA Region, forêt d’Antsahandroboka, située à env. 10 km au SW du village de Morafeno, sentier d’Antsahandavakanjo vers Antsahabaraoka, 14°09’26”S 49°23’09”E, 1010 m, 18.II.2007, fl., *Rakotovoao et al. 3648* (G, P, MO, TAN). **Prov. Fianarantsoa:** Vatovavy-Fitovinany Region, Ranomafana NP, parcelle 3, S of National Road 25 at 7 km W of Ranomafana, Valohoaka trail system, 21°18’S 47°26’E, 1100–1250 m, 19–21.XI.1992, fl., *Turk, Randrianasolo & Solo 169* (MO, P, TAN). **Prov. Toliara:** Anosy Region, RNI #11 Andohahela, Camp 3, 13.5 km NW d’Eminiminy, 24°35’04”S 46°44’08”E, 1000–1400 m, 9.XI.1995, fr., *Rakotomalaza 492* (MO, TAN).

10. *Beguea vulgaris* G.E. Schatz, Gereau & Lowry, **spec. nova** (Fig. 2D, 12).

**Typus:** MADAGASCAR. **Prov. Fianarantsoa:** Vatovavy-Fitovinany Region, Ranomafana NP, 21°16’S 47°26’E, 1000–1100 m, 18–31.I.1993, fl., *Malcomber et al. 2058* (holo- : MO-04570269!; iso- : P [P06168859]!, TAN!).

*Haec species a congeneris caulibus petiolis et folii rhachide aureo-strigulosus deinde glabrescentibus atque foliolis in sicco complanatis marginibus revolutis apice obtusis usque breviter acuminatis distinguitur.*

*Tree* 4–25 m tall; stems densely golden strigulose, glabrescent. *Petioles* 2.3–6 cm, sparsely golden strigulose, glabrescent. *Leaves* with 3–11 subopposite to alternate leaflets; rachis 1–14.2 cm, not keeled, sparsely golden strigulose, glabrescent; petiolule 1–3 mm, sparsely golden strigulose; leaf blade 3.2–9.5 × 0.9–4.1 cm, elliptic, coriaceous, flat in pressed material, glabrous and glossy above, glabrous to sparsely strigulose near midvein below, dull, base asymmetrical, cuneate to attenuate and decurrent along petiolule, margins revolute, apex obtuse to acute to short acuminate, midvein slightly raised above, glabrous, raised below, sparsely strigulose, secondary veins 8–14 per side, slightly raised above, flat and indistinct

or slightly raised below, tertiary venation slightly raised above and below. *Inflorescence* axis 3.5–12.8 cm long, 1.1–1.8 mm in diam., unbranched, densely golden hirtellous; bracts 0.6–0.8 mm, narrowly triangular, cucullate; pedicels usually paired on a common peduncle c. 0.5 mm, sometimes solitary and epedunculate, 2–3.8 mm, c. 0.3 mm in diam., sparsely golden hirtellous. *Male flowers* with a cupulate, 5- to 7-lobed calyx, the lobes 0.5–0.8 × 0.3–0.8 mm, triangular, sparsely puberulous outside and inside; disc 1.5–1.8 mm in diam., granular-farinose; stamens 5–7, filaments 3.6–7.0 mm, glabrous, anthers 0.7–1.0 × 0.4–0.6, ellipsoid; pistillode 0.2–0.5 mm high, conical, hirtellous. *Female flowers* with a cupulate, 6-lobed calyx, the lobes c. 0.5 × 0.4 mm, triangular, sparsely puberulous outside, reflexed with the apex incurved; disc 1.7 mm in diam., convex, granular-farinose; staminodes 7–8, antherodes ellipsoid; ovary 1.7–1.8 × 1.6–1.8 mm, globose, sparsely strigulose, style 2–1–2.4 mm. *Infructescence* 7.5–15.2 cm, 1.1–2 mm in diam.; pedicels 3–5 mm in fruit. *Fruit* spheroid to less often ellipsoid, 14–19 mm high, 10–17 mm in diam., apiculate, the apiculum 0.3–0.6 mm, glabrous; fruit wall 0.7–1.1 mm thick; seed discoid, 10–12 mm in diam., 6–7 mm thick.

*Etymology.* – The epithet *vulgaris* refers to the common, widespread occurrence of the species.

*Vernacular names.* – “Borasaka”, “Lanary Elatrangidina”, “Maintipotora”, “Marankoditra”, “Ramaindafa”, “Ramendafa”.

*Conservation status.* – *Beguea vulgaris* is widespread (Fig. 3), with an EOO of 65,664 km<sup>2</sup> and an AOO probably greater than 2,000 km<sup>2</sup> given the amount of potential suitable habitat within the EOO. It occurs in the protected areas of Analama-zotra, Marojejy, Masoala, Ranomafana, Tsitongambarika and Zahamena, and is known from a minimum of 16 locations with respect to the threat of forest degradation and clearing. It is therefore assigned a preliminary assessment of “Least Concern” [LC] using the IUCN Red List criteria (IUCN, 2012).

*Notes.* – *Beguea vulgaris* is widely distributed from Marojejy PN to Bemangidy near Tolagnaro (Fig. 3) in mid-elevation humid to subhumid forest. It is easily distinguished from *B. apetala* by its flat vs folded leaflets, with an obtuse to acute to occasionally short acuminate apex (vs a long acuminate apex), and from *B. tsaratananensis* by its leaflets with revolute margins and its puberulous sepals (vs flat leaflet margins and glabrous sepals) (Fig. 2D, 12D).

*Paratypes.* – MADAGASCAR. **Prov. Antsiranana:** SAVA Region, RNI Marojejy, aux env. du sommet d’Ambatosoratra, 14°32’S 49°42’30”E, 1583 m, 17–24.VI.1994, fr., *Ravelonarivo 234* (MO, P, TAN), *ibid. loc.*, 17–24.VI.1994, fr., *Ravelonarivo 253* (MO, P, TAN). **Prov. Fianarantsoa:** Vatovavy-Fitovinany Region, Ranomafana NP, 21°15’S 47°27’E, 800–1000 m, 17–19.VIII.1993, fl., *Kotozafy, Randriananantena & Randrianasolo 174* (G, MO, P, TAN); *ibid. loc.*, 21°16’S 47°25’E,





Fig. 12. - *Beguea vulgaris* G.E. Schatz, Gereau & Lowry. **A.** Flowering branch; **B.** Portion of inflorescence axis; **C.** Detail of flower at anthesis; **D.** Infructescence axis with fruits. [A-C: Malcomber et al. 2058, MO; D: Rakotozafy et al. 174, MO] [Drawing: R.L. Andriamiarisoa]

900 m, 12 Mar. 1993, fl., *Malcomber, Turk & Rakoto 2227* (MO, P, TAN); *ibid. loc.*, Vatoharanana, 21°17'04"S 47°26'00"E, 1025 m, 2.X.2000, fr., *Rakotoavao & Randriantafika 987* (MO, P, TAN); *ibid. loc.*, 21°16'S 47°25'30"E, 1000 m, 21.II.1991, fl., *Schatz et al. 3165* (MO, P, TAN); *ibid. loc.*, parcelle 3, S of National Road 25 at 7 km W of Ranomafana, Talatakely trail system, 21°15'30"S 47°25'E, 950–1150 m, 16.VIII.1993, fl., *Turk, Solo & Randrianasolo 521* (MO, P, TAN); *ibid. loc.*, 21°15'S 47°27'E, VII.1987, fr., *Wright 12* (MO). **Prov. Toamasina:** Alaotra-Mangoro Region, Moramanga, Ambatovy, forêt d'Analamay, 18°49'27"S 48°20'13"E, s.d., fr., *Andriatsiferana 2553* (MO, P, TAN); *ibid. loc.*, Ambatovy forest, 18°50'11"S 48°18'44"E, 1168 m, 22.I.2007, y.fr., *Antilabimena 5175* (MO, P, TAN, TEF); *ibid. loc.*, 18°50'14"S 48°18'39"E, 1154 m, 19.I.2007, fl., *Antilabimena & Razafindasy 5153* (G, MO, P, TAN); *ibid. loc.*, junction of a road Berano and Analamy, 18°50'08"S 48°18'42"E, 1200 m, 10.III.2007, fr., *Antilabimena et al. 5459* (MO, P, TAN); *ibid. loc.*, Ambatovy forest/Andranoverly, 18°51'53"S 48°18'58"E, 1006 m, 5.III.2008, fr., *Antilabimena 6114* (MO, P, TAN, TEF); *ibid. loc.*, Forêt d'Analamay, 18°49'18"S 48°19'08"E, 1200 m, 5.VI.2007, fr., *Bernard et al. 512* (MO, P, TAN); S de Moramanga, [18°56'S 48°13'E], 18.II.1930, fl., *Decary 7108* (MO, P); Forêt d'Analamazoatra, [18°56'S 48°26'E], 800 m, s.d., y.fr., *Perrier de la Bathie 5251* (MO, P); Lakoto, village Bekorakaka, 19°03'16"S 48°21'43"E, 1000 m, 25.IX.2000, fr., *Randrianavo et al. 546* (MO, P, TAN); forêt d'Ambatovy, 18°47'19"S 48°20'33"E, 1009 m, 23.X.2008, ster., *Ratolejanabary 41* (MO, TAN); Ambatofitatra, [PN Zahamena], [17°38'30"S 48°50'E], 14.XII.1959, fl., *Réserves Naturelles 10547* (P); Analanjirofo Region, Dist. Vavatenina, Canton Sahatavy, [PN Zahamena], [17°38'30"S 48°50'E], 24.II.1960, fl., *Réserves Naturelles 11041* (P, TEF); Alaotra-Mangoro Region, Analamazoatra-Perinet, [18°56'S 48°26'E], 20.III.1950, fr., *Service Forestier 1159* (P, TEF); Ambatofo-Moramanga, [19°26'S 48°12'E], 4.VII.1952, fr., *Service Forestier 6132* (MO, P, TEF); Analanjirofo Region, env. du col d'Ambatondrama (piste Maroantsetra-Antalaha), au N de la presqu'île Masoala, [15°17'30"S 50°01'36"E], 600 m, 25.XII.1953, y.fr., *Service Forestier 8791* (MO, P, TEF); Alaotra-Mangoro Region, Dist. Moramanga, Malompy, Ambohimiarina, [19°18'S 48°21'E], 18.IV.1957, fr., *Service Forestier 16959* (P, TEF); vallée de la Vohomahery, à l'E de Nosivolo (Canton de Manakambahiny-Est) (limite W de la RN III [Zahamena]), [17°46'00"S 48°39'40"E], 27.VIII.1958, fr., *Service Forestier 18728* (P, TEF); Ampandroambazaha, PK 28 route Moramanga-Anosibe, [19°08'30"S 48°15'00"E], 900 m, 12.VII.1963, fr., *Service Forestier 21233* (G, K, MO, P, TEF); Koubaville, entre Moramanga et Anosibe, [19°16'00"S 48°13'30"E], 23.XII.1965, fl., *Service Forestier 24414* (MO, P, TEF); Atsinanana Region, Canton et Distr. d'Anosibe An'Ala, [19°42'00"S 48°34'00"E], 22.IV.1964, fr., *Service Forestier 25005* (K, MO, P, TEF); Ambonitra, PK 39 route Moramanga-Anosibe An'Ala, [19°10'S 48°13'E], 5.V.1965, fr., *Service Forestier 25183* (K, MO, P, TEF); *ibid. loc.*, *Service Forestier 25200* (G, K, L, MO, P); Forêt d'Analamazoatra, [18°56'S 48°26'E], 3.XII.1934, fl., *Ursch 49* (P). **Prov. Toliara:** Anosy Region, Antsotsosy, forêt de Bemangidy, 24°34'10"S 47°12'01"E, 651 m, 5.IV.2008, fl., *Randriantafika et al. 834* (MO, P, TAN).

## Acknowledgments

We wish to thank S. Buerki and M. Callmänder for helpful comments that improved the paper; S. Andriambololona and J. Raharimampionona for assistance with specimen and data management; Roger Lala Andriamiarisoa for the fine illustrations; and the staff of the Herbar National in Paris. Field work was conducted under collaborative agreements between the Missouri Botanical Garden and the Parc Botanique et Zoologique de Tsimbazaza and the Direction de la Recherche Forestière et Piscicole, FOFIFA, Antananarivo, Madagascar. We gratefully acknowledge courtesies extended by the Government of Madagascar (Direction Générale de la Gestion des Ressources Forestières) and by Madagascar

National Parks. Part of this research was conducted with support from U.S. National Science Foundation (grant no. DEB-9627072) and the National Geographic Society.

## References

- BUERKI, S., F. FOREST, P. ACEVEDO-RODRÍGUEZ, M.W. CALLMÄNDER, J.A.A. NYLANDER, M. HARRINGTON, I. SANMARTÍN, P. KÜPFER & N. ALVAREZ (2009). Plastid and nuclear DNA markers reveal intricate relationships at subfamilial and tribal levels in the soapberry family (Sapindaceae). *Mol. Phylogen. Evol.* 51: 238–258.
- BUERKI, S., P.P. LOWRY II, P.B. PHILLIPSON & M.W. CALLMÄNDER (2010). Molecular, phylogenetic and morphological evidence supports recognition of *Gereaua*, a new endemic genus of Sapindaceae from Madagascar. *Syst. Bot.* 35: 172–180. DOI: <http://dx.doi.org/10.1600/036364410790862669>
- BUERKI, S., R. DOHERTY, L. GAUTIER & M.W. CALLMÄNDER (2014). Rediscovery of the genus *Tsingya* Capuron (Sapindaceae) and its phylogenetic position. *Candollea* 69: 172–180. DOI: <http://dx.doi.org/10.15553/c2014v692a12>
- CALLMÄNDER, M.W., C. RAKOTOVAO, J. RAZAFITSALAMA, P.B. PHILLIPSON, S. BUERKI, C. HONG-WA, N. RAKOTOARIVELO, S. ANDRIAMBOLOLONERA, M.M. KOOPMAN, D.M. JOHNSON, T. DEROIN, A. RAVOAHANGY, S. SOLO, J.-N. LABAT & P.P. LOWRY II (2009). New species from the Galoka and Kalebonono massifs: two unknown and severely threatened mountainous areas in NW Madagascar. *Candollea* 64: 179–202.
- CAPURON, R. (1969). Révision des Sapindacées de Madagascar et des Comores. *Mém. Mus. Natl. Hist. Nat., B, Bot.* 19.
- CORNET, A. (1974). *Essai de cartographie bioclimatique à Madagascar*. Notice Explicative No. 55. ORSTOM.
- DALY, D.C., J. RAHARIMAMPIONONA & S. FEDERMAN (2015). A revision of *Canarium* L. (Burseraceae) in Madagascar. *Adansonia* ser. 3, 37: 277–345.
- IUCN (2012). *IUCN Red List Categories and Criteria: Version 3.1*. 2<sup>nd</sup> ed. IUCN Species Survival Commission, Gland & Cambridge.
- MADAGASCAR CATALOGUE (2016). *Catalogue of the Vascular Plants of Madagascar*. Missouri Botanical Garden, St. Louis & Antananarivo [<http://www.tropicos.org/project/mada>].
- RANDRIANASOLO, A. & P.P. LOWRY II (2009). Four new species and one new combination in the Malagasy endemic genus of *Micronychia* Oliv. (Anacardiaceae). *Adansonia* ser. 3, 31: 157–168.
- SCHATZ, G.E. (2000). Endemism in the Malagasy tree flora. In: LOURENÇO, W.R. & S.M. GOODMAN (ed.), *Diversity and Endemism in Madagascar*: 1–9. Mémoires de la Société de Biogéographie, Paris.
- SCHATZ, G.E. (2001). *Generic Tree Flora of Madagascar*. Royal Botanic Gardens, Kew and Missouri Botanical Garden, St. Louis.

