

Effects of climate change and environmental variability on the carrying capacity of Alaskan seabird populations

Authors: Goyert, Holly F., Garton, Edward O., and Poe, Aaron J.

Source: The Auk, 135(4) : 975-991

Published By: American Ornithological Society

URL: <https://doi.org/10.1642/AUK-18-37.1>

BioOne Complete (complete.BioOne.org) is a full-text database of 200 subscribed and open-access titles in the biological, ecological, and environmental sciences published by nonprofit societies, associations, museums, institutions, and presses.

Your use of this PDF, the BioOne Complete website, and all posted and associated content indicates your acceptance of BioOne's Terms of Use, available at www.bioone.org/terms-of-use.

Usage of BioOne Complete content is strictly limited to personal, educational, and non - commercial use. Commercial inquiries or rights and permissions requests should be directed to the individual publisher as copyright holder.

BioOne sees sustainable scholarly publishing as an inherently collaborative enterprise connecting authors, nonprofit publishers, academic institutions, research libraries, and research funders in the common goal of maximizing access to critical research.



RESEARCH ARTICLE

Effects of climate change and environmental variability on the carrying capacity of Alaskan seabird populations

Holly F. Goyert,^{1a*} Edward O. Garton,¹ and Aaron J. Poe²

¹ Idaho Cooperative Fish and Wildlife Research Unit, University of Idaho, College of Natural Resources, Department of Fish and Wildlife Sciences, Moscow, Idaho, USA

² Aleutian and Bering Sea Islands Landscape Conservation Cooperative, U.S. Fish and Wildlife Service, Anchorage, Alaska, USA

^a Current address: University of Massachusetts, Amherst, Massachusetts, USA

* Corresponding author: hgoyert@umass.edu

Submitted March 8, 2018; Accepted June 6, 2018; Published August 15, 2018

ABSTRACT

Marine birds in Alaska, USA, have been monitored systematically for more than 4 decades, and yet it remains unclear why some populations have increased while others have declined. We analyzed the population dynamics of 5 seabird species—Black-legged (*Rissa tridactyla*) and Red-legged kittiwakes (*R. brevirostris*), Common (*Uria aalge*) and Thick-billed murres (*U. lomvia*), and Tufted Puffins (*Fratercula cirrhata*)—across 4 decades in Alaska. We tested hypotheses that each species' carrying capacity varied continuously through time with climate cycles and/or in response to habitat covariates. Using an information-theoretic approach, we evaluated competing candidate stochastic growth models of each species' annual rate of change, incorporating various environmental covariates. The North Pacific Index and Pacific Decadal Oscillation were the most important climatic covariates across the whole of Alaska, where the former generally was negatively related to rates of population change, and the latter positively related. Across the 40-yr time series, we found slight decreases in zooplankton (i.e. krill) concentrations across the Gulf of Alaska, and significant increases in sea surface temperature across the Aleutian Islands. Kittiwakes showed the greatest level of sensitivity to these 2 environmental changes. Our results provide evidence that deteriorating secondary productivity (i.e. euphausiids) has contributed to declines of Black-legged Kittiwakes in the Gulf of Alaska. In contrast, the carrying capacity of murres has increased across the state, even in regions affected by warming waters and reduced productivity. These results suggest that kittiwakes act as indicators of detrimental impacts of climatic variability, whereas murres demonstrate resilience to such environmental change. Identifying the ecological factors that explain seabird population dynamics is necessary to understand the implications of climate and environmental change for long-term marine ecosystem dynamics.

Keywords: climate change, environmental resilience, carrying capacity, density dependence

Efectos del cambio climático y de la variabilidad ambiental sobre la capacidad de carga de las poblaciones de aves marinas de Alaska

RESUMEN

Las aves marinas de Alaska, EEUU, han sido monitoreadas sistemáticamente por más de cuatro décadas, y sin embargo sigue sin estar claro por qué algunas poblaciones han aumentado mientras que otras han disminuido. Analizamos las dinámicas poblacionales de cinco especies de aves marinas a lo largo de cuatro décadas en Alaska: *Rissa tridactyla* y *R. brevirostris*, *Uria aalge* y *U. lomvia*, y *Fratercula cirrhata*. Evaluamos las hipótesis de que la capacidad de carga de cada especie varió continuamente a través del tiempo según los ciclos climáticos y/o en respuesta a las covariables del hábitat. Usando un enfoque teórico de la información, evaluamos varios modelos de crecimiento estocástico de las tasas anuales de cambio de cada especie, incorporando varias covariables ambientales. El Índice del Pacífico Norte y la Oscilación Decadal del Pacífico fueron las covariables climáticas más importantes a través del estado, donde el primero generalmente se relacionó negativamente con las tasas de cambio poblacional y el último se relacionó positivamente. A lo largo de la serie de 40 años, encontramos pequeñas disminuciones en las concentraciones de zooplancton (i.e., krill) a lo largo del Golfo de Alaska, y aumentos significativos en la temperatura superficial del mar a través de las Islas Aleutianas. *Rissa* mostró el mayor nivel de sensibilidad a estos dos cambios ambientales. Nuestros resultados brindan evidencia de que el deterioro de la productividad secundaria (i.e., eupásidos) contribuyó a la disminución de *Rissa tridactyla* en el Golfo de Alaska. En contraste, la capacidad de carga de *Uria* aumentó a través del estado, incluso en las regiones impactadas por aguas más cálidas y una reducción de la productividad. Estos resultados sugieren que *Rissa* actúa como indicador de impactos negativos derivados de la variabilidad climática, mientras que *Uria* demuestra resiliencia a este cambio climático. Es necesario identificar los factores ecológicos que explican las dinámicas

poblacionales de las aves marinas para entender las implicancias del cambio climático y ambiental en la dinámica de largo plazo de los ecosistemas marinos.

Palabras clave: cambio climático, capacidad de carga, denso-dependencia, resiliencia ambiental

INTRODUCTION

Marine birds are known to be good indicators of environmental change (Piatt et al. 2007, Sydeman et al. 2017), yet rarely are the causes of long-term population variability tested directly. This is largely due to the prohibitively expensive, but indispensable, nature of systematic long-term ecological monitoring (Lindenmayer et al. 2012). Short-term environmental perturbations can produce annual population fluctuations around a fixed or changing carrying capacity (K) that are best described by inverse density dependence (Goyert et al. 2017). Explaining changes in K requires a quantifiable assessment of its relationships with climatic and habitat variation. We examined the relationships between these 2 factors and the carrying capacity of 5 Alaskan seabird species—Black-legged (*Rissa tridactyla*) and Red-legged kittiwakes (*R. brevirostris*), Common (*Uria aalge*) and Thick-billed murre (*U. lomvia*), and Tufted Puffins (*Fratercula cirrhata*)—along a 4-decade time series (1974–2014). These 5 species occupy an array of foraging niches (Byrd and Williams 1993, Gaston and Hipfner 2000, Ainley et al. 2002, Piatt and Kitaysky 2002, Hatch et al. 2009): They feed on a spectrum of diverse (e.g., murre) to narrowly specific prey (e.g., Red-legged Kittiwakes), exploited at the sea surface (e.g., both species of kittiwake) or at depth (e.g., murre and puffins), in offshore (e.g., murre and kittiwakes) and/or nearshore ranges (e.g., puffins). We assessed the effects of long-term variability in the quality of foraging habitat on the number of individuals supported by this habitat (i.e. carrying capacity or quasi-equilibrium abundance, K ; Garton et al. 2016).

Our objective was to determine whether changes in habitat or climate explained why murre and kittiwakes have both increased in the Arctic, but have responded differently from each other to conditions in southern Alaska, USA (Goyert et al. 2017). We also aimed to describe why puffins have declined in the Gulf of Alaska, consistent with their neighboring populations in the North Pacific (which are under review for listing pursuant to the Endangered Species Act; Hodum 2013). Links between climate and the predictability or availability of prey have been shown to affect the productivity and population trends of seabirds breeding on the Pribilof Islands of Alaska (Byrd et al. 2008, Renner et al. 2012, 2014). We evaluated how the population dynamics of our study species responded to (1) climatic indices (e.g., Pacific Decadal Oscillation and Arctic Oscillation), and (2) habitat variability, as described by sea surface temperature (SST)

and secondary productivity (e.g., zooplankton concentrations; Hermann et al. 2013, M. A. Smith personal communication). Our analysis is the first attempt to explain the population dynamics of marine birds relative to these climatic indices and habitat variability across the entire extent of Alaska and its 4 large marine ecosystems: Aleutian Islands, Arctic, Eastern Bering Sea, and Gulf of Alaska (Figure 1; <https://www.st.nmfs.noaa.gov/ecosystems/lme/index>, M. A. Smith personal communication).

We tested the hypotheses that population rates of change would be positively related to the density of euphausiids (i.e. krill) and negatively related to increasing SST associated with a changing climate (Irons et al. 2008, Descamps et al. 2017). Our 5 study species feed primarily on young, cold-water forage fish, particularly ammodytids (e.g., sand lance [*Ammodytes hexapterus*]), osmerids (e.g., capelin [*Mallotus villosus*]), and gadids (e.g., pollock [*Gadus chalcogrammus*]; Drummond 2016). Red-legged Kittiwakes additionally specialize on several species of myctophid (lanternfish). Many seabirds, Thick-billed Murre and Black-legged Kittiwakes in particular, also feed facultatively on krill (Gaston and Hipfner 2000, Williams et al. 2008, Ito et al. 2010, Drummond 2016). While long-term data on the distribution and abundance of forage fish remain limited in scope, SST and krill biomass serve as proxies of foraging habitat quality. Therefore, secondary productivity conventionally functions as an indirect mechanistic link between primary productivity and predator abundance, where cold, nutrient-rich upwelling water positively influences the availability of prey (e.g., zooplankton and/or forage fish) via bottom-up trophic forcing (Shealer 2001, Frank et al. 2006). We expected to find variability in each species' population response to habitat and climate as a result of disparities in their foraging ecology. Thus, we provide insight into the relative vulnerability of Alaskan seabirds to long-term, ecosystem-wide change.

METHODS

Data

For our study period (1974–2014), we obtained indices of climatic (oceanic and atmospheric) variation from the National Oceanic and Atmospheric Administration's (NOAA) Bering Sea Climate database (<http://www.beringclimate.noaa.gov/data/>). Seasonal and annual data were available for the Arctic Oscillation (AO), North Pacific Index (NPI, which also included the Aleutian Low

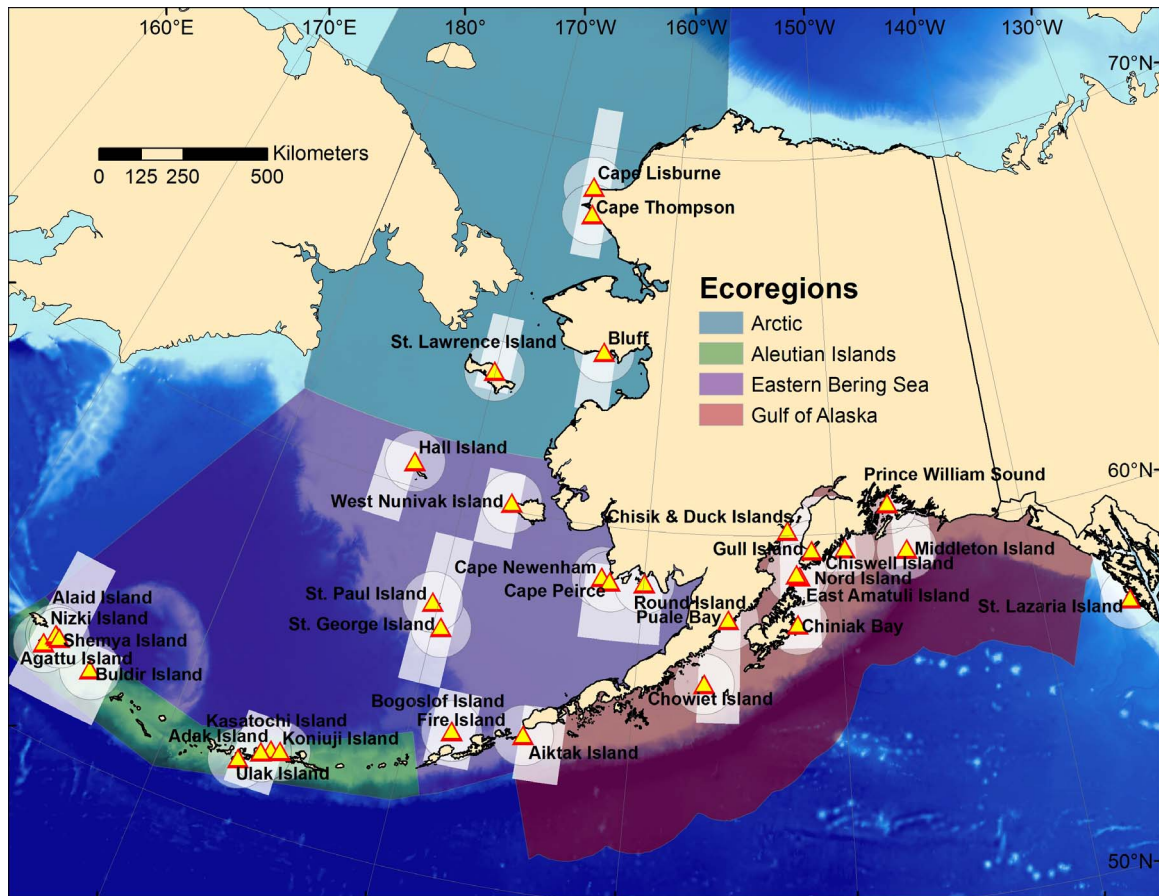


FIGURE 1. Sites of monitored seabird colonies in Alaska, USA (yellow triangles), and their corresponding ecoregions. St. Lazaria Island is within the Gulf of Alaska, even though it is shown outside the scope of this large marine ecosystem (as delineated by <https://www.st.nmfs.noaa.gov/ecosystems/lme/index>; M. A. Smith personal communication). White polygons represent the spatial extent of extracted covariates: sea surface temperature (rectangles) and euphausiids (circles).

Index), and Pacific Decadal Oscillation (PDO). To avoid model overparameterization (i.e. overfitting), we conducted preliminary analyses using an information-theoretic approach (see section below) to identify which of the 9 oceanic and atmospheric indices to include in a “global model,” under which we tested a nested candidate set of models (Burnham and Anderson 2002). Across the 5 species, the 4 most descriptive indices (e.g., best-supported within an information-theoretic framework, explained high amounts of variation in the data, consistent with R^2 values) were: the annual AO (AOIa), the NPI spring anomaly (NPIass), the summer PDO (PDOs), and the annual PDO (PDOa).

We limited the scope of our habitat covariates to the months when each species used foraging habitat in Alaskan waters (e.g., the breeding and fledging seasons, and post- and pre-migration, April–October). SST data layers were available from the NOAA Extended Reconstructed SST database (ERSST Version 4, based on in situ datasets; Huang et al. 2015); for our study area, we used the

spatial extent of 50°–70°N and 170°–230°E. Across each ecoregion (and the entire state as a whole), we calculated annual means (°C) from monthly data spanning April–October, extracted from the 2° × 2° cell surrounding each colony (Figure 1, rectangles).

The NOAA Pacific Marine Environmental Laboratory (PMEL) provides a unique source of data on the inferred distribution and abundance of zooplankton across the geographic range of 50°–66°N and 170°–210°E (Hermann et al. 2013, M. A. Smith personal communication). These layers are available as downscaled (1) hindcasts (1974–2005) from the Coordinated Ocean–Ice Reference Experiments (CORE; Griffies et al. 2009) and (2) projections (2005–2014) from the Canadian Centre for Climate Modelling (CCCma) coupled global climate model (CGCM3; Flato et al. 2000). We selected the CCCma model over others implemented by PMEL for the Intergovernmental Panel on Climate Change because it showed intermediate levels of global warming (Hermann et al. 2013, M. A. Smith personal communication), with

the others showing lower and higher warming trends. The CORE and CCCma models additionally provide information on SST, but they harbor more uncertainty than the ERSSTv4 data because they are derived from modeled output, as opposed to raw data (Huang et al. 2015). We validated our use of these sources for zooplankton data by testing the congruence among their SST layers and the ERSSTv4 data. Despite the uncertainty inherent in zooplankton data, they were extremely valuable in their ability to provide the only source of historical inference on the prey base across our entire study area. We calculated long-term trends in SST and zooplankton data using a Theil-Sen approach and Mann-Kendall nonparametric tests in package *trend* (Pohlert 2016) in R (R Core Team 2017).

To remain within the bounds of each species' foraging range (Smith et al. 2012), we extracted data covering a 90-km radius from each colony, at a spatial resolution of 10×10 km ($\sim 0.1^\circ \times 0.1^\circ$; Figure 1, circles). We calculated annual mean euphausiid concentrations (mg C m^{-3}) across each ecoregion (or the entire state) at the sea surface from inferred weekly data spanning April–September. While kittiwakes forage at the sea surface and murres exploit a large portion of the water column, we chose sea surface data to compare the effects of zooplankton across bird species.

The range of murres and Black-legged Kittiwakes covers all 4 ecoregions in Alaska, whereas Red-legged Kittiwakes colonize only a few islands in western Alaska, and Tufted Puffins occupy southern Alaska. We compiled a 4-decade-long time series of count data for our 5 study species from 33 monitored sites across Alaska's 4 large marine ecosystems (Goyert et al. 2017). These counts were based on breeding-age adults (murres and some kittiwake colonies), nests (2 Black-legged Kittiwake datasets), and burrow entrances (puffins; Dragoo et al. 2015). We reconstructed historical population sizes as inferred from the minimum number of nesting individuals across our study sites (Garton et al. 2011).

We used reconstructed annual population rates of change for each seabird species, $r_t = \ln(N_{t+1}) - \ln(N_t)$, as the response variable in our modeling framework (Goyert et al. 2017). We tested for cross-correlations between these rates of change and the environmental predictors to determine whether any covariates had a lag effect (i.e. whether covariates were more likely to affect rates of change in a subsequent vs current year). To avoid collinearity among the environmental variables in our models, we removed one of any covariate pair with a Pearson's $r > 0.6$ or that resulted in a generalized variance inflation factor > 2 (Zuur et al. 2010). Of the 6 possible environmental predictors (AOIa, NPIAss, PDOa, PDOs, SST, euphausiids), we excluded the PDOs because it was collinear with the PDOa and NPIAss.

Information-theoretic Modeling Framework

We implemented discrete time and stochastic Ricker and Gompertz models (Dennis and Taper 1994), with density-dependent time lags of up to 2 yr (Garton et al. 2011, 2016, Goyert et al. 2017). For each species, we evaluated the global model, which included 3 climatic covariates (AOIa, NPIAss, PDOa), 2 habitat covariates (SST, euphausiids), a time trend in K (linear or quadratic), and 1 of the 6 mutually exclusive density-dependent terms (N_t , N_{t-1} , N_{t-2} , $\ln(N_t)$, $\ln(N_{t-1})$, $\ln(N_{t-2})$). We conducted all our analyses in R (R Core Team 2017), and compared the relative support for models in the candidate set ($n = 672$ models nested within each global model) using Akaike's information criterion adjusted for small samples (AIC_c). We determined the most competitive models ($\Delta AIC_c < 2$; Burnham and Anderson 2002) nested within the global model(s) for each species using package *MuMIn* (Bartoń 2015). To better represent the relative importance of covariates beyond this cutoff value, we also computed the sum of Akaike weights across all 672 candidate models for each species (in Supplementary Material Tables S1 and S2 we report the candidate set of models with cumulative Akaike weights < 0.95). We avoided model-averaging the parameter estimates, which would have misrepresented the effect size of each mutually exclusive density-dependent term; that is, we required a parameter estimate for either the Ricker (e.g., N_t), Gompertz (e.g., $\ln(N_t)$), or time-lagged (e.g., N_{t-1}) model term, as opposed to an estimate of a combination of these density-dependent terms in a single resulting averaged model.

RESULTS

Across our 4-decade-long time series, SST increased significantly in the Aleutian Islands ($y = 6.6 + 0.019t$, calculated using a Theil-Sen estimator) by, on average, an annual increment (time t) of 0.019°C from the mean temperature of 6.6°C in 1974 to 7.3°C in 2014 (Figure 2); the Mann-Kendall test confirmed that this increase was significant ($S = 248$, $P = 0.006$), and the residuals of this regression were not autocorrelated. The mean temperature in the first 2 decades of the Aleutian Island time series (6.8°C , including 1994) was significantly different from that in the last 2 decades (7.2°C ; $t_{38} = -2.9$, $P = 0.006$). We found a significant positive correlation between SST from the ERSSTv4 and the derived CORE and CCCma models (Pearson's $r = 0.39$, $P = 0.01$), which supported our use of inferred zooplankton data from the latter source. This metric of euphausiid density at the sea surface decreased slightly in the Gulf of Alaska ($y = 4.6 - 0.0072t$; Mann-Kendall $S = -174$, $P = 0.05$; Figure 3); the residuals of this regression were not autocorrelated. Similarly, the mean euphausiid density in the first 2 decades in the Gulf of Alaska time series was significantly

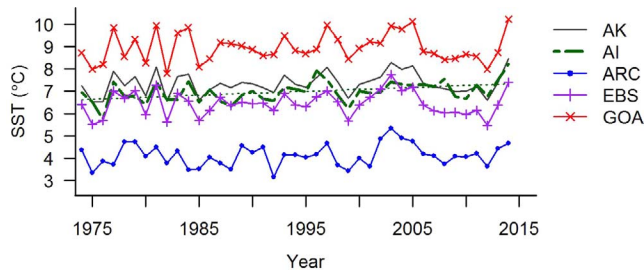


FIGURE 2. Annual April–October mean National Oceanic and Atmospheric Administration (NOAA) extended reconstructed sea surface temperature data (ERSST Version 4) across Alaska (AK), USA. The spatial extent covered 2° cells that overlapped seabird colonies in the Aleutian Islands (AI), Arctic (ARC), Eastern Bering Sea (EBS), and Gulf of Alaska (GOA) ecoregions. The regression line indicates significant increases in sea surface temperature (SST) across the 40-yr time series in the AI.

greater than that in the last 2 decades ($t_{36} = 2.0$, $P = 0.05$).

Preliminary analyses of auto- and cross-correlation functions indicated that there were no strong time lags ($P > 0.05$ for cross-correlation coefficients) between population rates of change and environmental covariates, and that only the PDOa was autocorrelated, at a 1-yr lag (autocorrelation coefficient = 0.482, $P = 0.002$). Such temporal autocorrelation in the covariates, along with the structure of the model which allowed for density dependence and time lags, helped to accommodate nonindependence in the response variable (rates of change). This resulted in successful model diagnostics: The models showed no evidence of nonindependence, as diagnosed by the lack of significant autocorrelation in the top population dynamics models and in the residuals of the aforementioned covariates regressed against time (most notably those covariates that showed significant increases or decreases through time, e.g., SST in the Aleutian Islands and euphausiids in the Gulf of Alaska). Across the entire extent of Alaska, population rates of change were generally positively related to the AOIa (Common Murres), PDOa (Tufted Puffins, Red-legged Kittiwakes, and Thick-billed Murres), and euphausiids (Black-legged Kittiwakes and Tufted Puffins). They were negatively related to the NPIAss (Common and Thick-billed murres) and SST (Common Murres; Table 1, Appendix Figure 5). These relationships varied by species at the ecoregion level (Table 2).

Population models that assumed that the carrying capacity of Black-legged Kittiwakes varied on an annual basis with time, climate, and/or habitat performed significantly better than the null model (density dependence without any covariates, i.e. a constant trend in K ; Tables 1 and 2). The time trend in K captured the most variation in their population dynamics, particularly in the

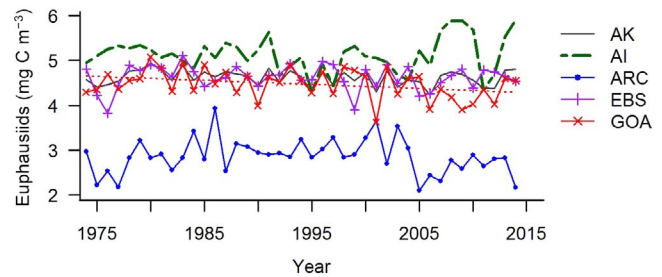


FIGURE 3. Annual April–September mean euphausiid concentration at the sea surface across Alaska (AK), USA. The spatial extent covered cells within a 90-km radius of seabird colonies in the Aleutian Islands (AI), Arctic (ARC), Eastern Bering Sea (EBS), and Gulf of Alaska (GOA) ecoregions. Data were sourced from the Coordinated Ocean–Ice Reference Experiments model (1974–2004) and from the Canadian Centre for Climate Modelling coupled global climate model (2005–2014). The regression line indicates a decrease in euphausiid concentration across the 40-yr time series in the GOA.

Arctic, Eastern Bering Sea, and Gulf of Alaska ecoregions. K increased in the Arctic and decreased elsewhere. Population rates of change were negatively related to euphausiids in the Eastern Bering Sea and positively related elsewhere. In the Aleutian Islands, rates of change were positively related to the PDOa and negatively related to the AOIa and NPIAss.

Using covariates from the density-dependent models, including time where appropriate, explained 114% (Tufted Puffins) to 483% (Common Murres) more of the variation in growth rates for all of the species except Red-legged Kittiwakes, for which it increased the variation explained by only 13%, a negligible amount (see R^2 values in Table 1 for these calculations, compared between the null model and best covariate model). For Red-legged Kittiwakes across their range in Alaska, the most descriptive models estimated either a constant K or a varying K that changed with time or the PDOa. A dynamic K was significantly better than the null model in both ecoregions occupied by this species (Aleutian Islands, Eastern Bering Sea). K decreased with time, euphausiids, and NPIAss in the Eastern Bering Sea. Increasingly positive rates of change and higher carrying capacities were associated with higher abundance of euphausiids in the Aleutian Islands. However, rates of change in this latter ecoregion were negatively related to the AOIa, NPIAss, and SST.

For Common Murres across Alaska, K varied with time, but SST, the NPIAss, and/or the AOIa described significantly more variation than the null model (constant K ; except in the Eastern Bering Sea ecoregion). K decreased linearly with time in the Eastern Bering Sea, but increased elsewhere. Rates of change were inversely related to changes in SST in the Arctic and Gulf of Alaska ecoregions, and positively related to the PDOa in the Gulf of Alaska.

TABLE 1. Parameter effects of the top kittiwake, murre, and puffin population models across Alaska, USA. We evaluated density-independent and density-dependent Ricker (linear) and Gompertz (log-linear) models, using population reconstructions for Black-legged (BK) and Red-legged kittiwakes (RK), Common (CM) and Thick-billed murres (TM), and Tufted Puffins (TP). For each species (Spp), the relative importance of covariates is shown in the first row, weighted across the candidate set of 672 models. Below this, each row represents one of the most competitive models (difference from the top model in Akaike's information criterion corrected for small sample size $[\Delta AIC_c] < 2$), with its Akaike weight (w_i), R^2 value, intercept (μ), and covariate effects. The covariates qualified as: (1) mutually exclusive density-dependent terms, where N_t is the population size at time t and negative effects suggest density dependence, while N_{t-1} and N_{t-2} indicate a time lag of dependence on population sizes up to 2 yr past; (2) climatic covariates, including the annual Arctic Oscillation (AOIa), spring North Pacific anomaly (NPIAss), and annual Pacific Decadal Oscillation (PDOa); (3) habitat covariates, including sea surface temperature (SST) and euphausiid concentration (Euph); and (4) linear and nonlinear (quadratic) effects of time (t) on the rates of change, which suggest an increasing (+) or decreasing (–) trend in carrying capacity (K) with year. For example, the top candidate model for BK contains only the terms $\ln(N_t)$ (negative Gompertz density-dependence), t , and t^2 (decreasing time trend), and the second most competitive model is the same but with a positive effect of euphausiids also included. The top null density-dependent models (with a constant time trend in K) are italicized; those with $\Delta AIC_c > 2$ (i.e. significantly worse models) are listed below the dotted line. Models highlighted in bold font are depicted in Figure 4; refer to Supplementary Material Table S1 for candidate sets of models with cumulative Akaike weights < 0.95 .

Spp	AIC _c	ΔAIC _c	w _i	R ²	μ	Density dependence						Climate					Habitat		Time trend	
						N _t	N _{t-1}	N _{t-2}	ln(N _t)	ln(N _{t-1})	ln(N _{t-2})	AOIa _t	NPIAss _t	PDOa _t	SST _t	Euph _t	t	t ²		
BK	Importance	–66.87	0.00	0.22	0.50	11.04	0.09	0.00	0.00	0.91	0.00	0.00	0.19	0.19	0.19	0.24	0.35	1.00	0.98	
		– 65.76	1.11	0.13	0.53	10.70			–0.835									–0.030	4.95E–04	
RK	Importance	–49.81	17.05	0.00	0.11	2.80	0.01	0.11	0.34	0.01	0.10	0.41	0.18	0.19	0.27	0.19	0.18	0.32	0.06	
		–49.58	0.00	0.07	0.30	3.93			–1.29E–06			–0.351						–0.003		
		–49.32	0.26	0.06	0.29	0.30						– 0.315								
		–48.58	1.00	0.04	0.34	4.38														
		– 48.14	1.43	0.04	0.33	3.89														
CM	Importance	–48.10	1.48	0.03	0.33	0.36	0.25	0.02	0.02	0.65	0.02	0.02	0.36	0.45	0.24	0.47	0.28	0.93	0.29	
		–47.88	1.70	0.03	0.33	0.30														
		– 70.92	0.00	0.05	0.35	7.76				– 0.547				– 0.038		– 0.058		0.008		
		–70.29	0.62	0.04	0.29	6.88				–0.512			0.023					0.007		
		–70.18	0.74	0.03	0.29	6.85				–0.511				–0.028				0.007		
	–70.08	0.84	0.03	0.23	6.14				–0.457								0.007			
	–70.05	0.86	0.03	0.39	8.17				–0.577								0.015	–1.83E–04		
	–69.45	1.47	0.02	0.27	6.60				–0.495								0.014	–1.85E–04		
	–69.34	1.58	0.02	0.32	7.33				–0.547			0.019	–0.023				0.008			
	–69.24	1.68	0.02	0.32	0.82	–5.85E–07						0.015	–0.035				0.007			
	–69.24	1.68	0.02	0.37	8.05				–0.572			0.015	–0.033				0.008			
	–69.20	1.71	0.02	0.32	7.26				–0.518								0.016	–2.33E–04		
	–64.87	6.05	0.00	0.06	1.77				–0.128											

TABLE 1. Continued.

Spp	Density dependence										Climate				Habitat		Time trend		
	AIC _c	ΔAIC _c	w _i	R ²	μ	N _t	N _{t-1}	N _{t-2}	ln(N _t)	ln(N _{t-1})	ln(N _{t-2})	AOL _t	NPIAss _t	PDOA _t	SST _t	Euph _t	t	t ²	
TM	Importance																		
	-109.85	0.00	0.03	0.29	0.09	0.20	0.24	0.08	0.13	0.15	0.21	0.79	0.41	0.22	0.21	0.48	0.13		
	-109.69	0.15	0.03	0.34			-5.51E-08					-0.030							
	-109.67	0.18	0.03	0.29		-5.52E-08	-1.37E-07					-0.029						0.003	
	-109.20	0.65	0.02	0.28	1.16					-0.081		-0.030							
	-109.00	0.84	0.02	0.28	1.17				-0.082			-0.032							
	-108.96	0.89	0.02	0.32	0.16		-1.26E-07					-0.030							
	-108.64	1.21	0.02	0.27	0.09	-5.18E-08						-0.027							0.003
	-108.51	1.34	0.02	0.27	1.16			-0.081				-0.030							
	-108.42	1.43	0.02	0.31	2.80					-0.200		-0.031							0.003
-108.23	1.61	0.01	0.36	0.15			-1.30E-07				-0.021	0.016						0.003	
-108.05	1.80	0.01	0.26	0.00							-0.020	0.025							
	:	:	:	:	:	:	:	:	:	:	:	:	:	:	:	:	:	:	:
-103.90	5.95	0.00	0.12	0.10		-5.55E-08													
TP	Importance																		
	-59.93	0.00	0.04	0.14	3.83	0.33	0.04	0.36	0.04	0.04	0.17	0.19	0.40	0.19	0.32	0.34	0.08		
	-59.91	0.02	0.04	0.24	4.45			-0.293											
	-59.79	0.14	0.03	0.14	0.29			-0.340						0.026					
	-59.78	0.16	0.03	0.24	0.34	-5.90E-07													
	-59.73	0.20	0.03	0.24	4.96	-6.91E-07													
	-59.58	0.36	0.03	0.23	0.41	-7.66E-07		-0.376											-0.003
	-58.83	1.10	0.02	0.00	0.00														
	-58.74	1.19	0.02	0.30	3.90			-0.330						0.027		0.090			
	-58.69	1.25	0.02	0.20	3.29			-0.282						0.027		0.087			
-58.56	1.37	0.02	0.30	-0.09	-6.69E-07										0.090				
-58.52	1.42	0.02	0.20	-0.12	-5.66E-07										0.086				

TABLE 2. Parameter effects of the top kittiwake, murre, and puffin population models across the Alaskan ecoregions (Reg) colonized by each species: Aleutian Islands (AI), Arctic (ARC), Eastern Bering Sea (EBS), and Gulf of Alaska (GOA). See Table 1 for more details; refer to Supplementary Material Table S2 for candidate sets of models with cumulative Akaike weights < 0.95.

Spp	Reg	Density dependence										Climate				Habitat		Time trend	t^2	
		Importance	AIC_c	ΔAIC_c	w_i	R^2	μ	N_t	N_{t-1}	N_{t-2}	$\ln(N_t)$	$\ln(N_{t-1})$	$\ln(N_{t-2})$	AOI _t	NPIA _{ss,t}	PDO _{a,t}	SST _t			Euph _t
BK	AI	Importance	0.33	0.09	0.03	0.26	0.10	0.03	0.69	0.35	0.53	0.15	0.70	0.70	0.70	0.09				
		-30.87	0.00	0.06	0.62	0.01	-1.59E-05													
		-30.83	0.04	0.06	0.62	0.20	-1.74E-05													
		-30.58	0.29	0.05	0.61	4.94														
		-30.07	0.81	0.04	0.60	4.20														
ARC	ARC	Importance	0.01	0.00	0.00	0.99	0.00	0.00	0.24	0.22	0.33	0.20	0.27	0.27	0.43					
		39.32	0.00	0.13	0.45	9.84														
		39.82	0.50	0.10	0.48	10.36														
		40.73	1.41	0.06	0.47	8.89														
		41.11	1.78	0.05	0.50	10.31														
EBS	EBS	Importance	0.17	0.09	0.06	0.26	0.12	0.06	0.23	0.34	0.29	0.19	0.59	0.45	0.23					
		47.21	7.88	0.00	0.25	5.90														
		-30.34	0.00	0.04	0.20	1.12														
		-29.77	0.57	0.03	0.34	6.76														
		-29.04	1.30	0.02	0.24	5.93														
GOA	GOA	Importance	0.12	0.00	0.01	0.86	0.00	0.01	0.25	0.19	0.29	0.26	0.41	0.98	0.98					
		-24.55	0.00	0.17	0.44	10.25														
		-23.60	0.95	0.11	0.47	8.62														
		-22.65	1.89	0.07	0.45	9.80														
		-22.55	2.00	0.06	0.45	10.53														

TABLE 2. Continued.

Spp	Reg	AIC _c	ΔAIC _c	w _i	R ²	μ	Density dependence						Climate				Habitat		Time trend		
							N _t	N _{t-1}	N _{t-2}	ln(N _t)	ln(N _{t-1})	ln(N _{t-2})	AOIa _t	NPIAss _t	PDOa _t	SST _t	Euph _t	t	t ²		
RK	AI	Importance					0.49	0.02	0.01	0.42	0.03	0.01	0.78	0.58	0.26	0.46	0.41	0.24	0.05		
			-29.70	0.00	0.09	0.61	1.71	-9.84E-05					-0.079	-0.082		-0.144					
			-29.29	0.41	0.07	0.61	7.67				-0.746			-0.079	-0.083		-0.149				
			-28.27	1.43	0.04	0.66	1.14	-8.62E-05						-0.080	-0.089		-0.129		0.073		
			-28.03	1.67	0.04	0.65	6.33				-0.652			-0.079	-0.091		-0.133		0.075		
EBS	Importance		-26.33	3.37	0.02	0.31	0.60	-8.19E-05													
			-58.32	0.00	0.05	0.47	0.56	0.04	0.32	0.14	0.03	0.19	0.19	0.40	0.18	0.17	0.63	0.62	0.44		
			-57.76	0.56	0.04	0.61	0.95	-1.83E-06													
			-57.76	0.56	0.04	0.38	2.67	-1.70E-06					-0.170		-0.028		-0.096				
			-57.41	0.90	0.03	0.53	0.61	-2.02E-06							-0.020		-0.120				
CM	AI	Importance					0.18	0.00	0.82	0.00	0.00	0.14	0.14	0.14	0.16	0.33	0.14	0.80	0.16		
			-54.89	3.43	0.01	0.22	2.40														
			7.11	0.00	0.17	0.67	6.06				-0.756										
			8.28	1.17	0.09	0.71	4.77				-0.777						0.209				
			9.64	2.53	0.05	0.56	4.28														
ARC	Importance		-34.95	0.00	0.05	0.41	7.15	0.46	0.49	0.01	0.01	0.46	0.25	0.21	0.63	0.21	0.83	0.21			
			-34.93	0.03	0.05	0.41	0.84	-1.49E-06					-0.040			-0.087					
			-34.36	0.59	0.04	0.34	0.80	-1.45E-06					-0.039			-0.096					
			-34.24	0.72	0.04	0.34	6.89									-0.092					
			-30.91	4.04	0.01	0.16	4.24				-0.520					-0.083					
EBS	Importance		-46.37	0.00	0.09	0.37	7.28	0.05	0.05	0.57	0.01	0.18	0.20	0.23	0.18	0.33	0.60	0.14			
			-44.79	1.58	0.04	0.26	5.54														
			-44.62	1.76	0.04	0.33	0.58				-0.562										
			-44.51	1.87	0.04	0.40	7.00				-0.432										
			-28.69	0.00	0.18	0.46	7.86	0.13	0.00	0.00	0.84	0.00	0.00	0.20	0.19	0.82	0.73	0.41	0.98	0.25	
GOA	Importance		-27.76	0.93	0.11	0.49	6.54								0.124	-0.114	0.115	0.015			
															0.112	-0.111					
			-17.61	11.08	0.00	0.10	2.82				-0.504										

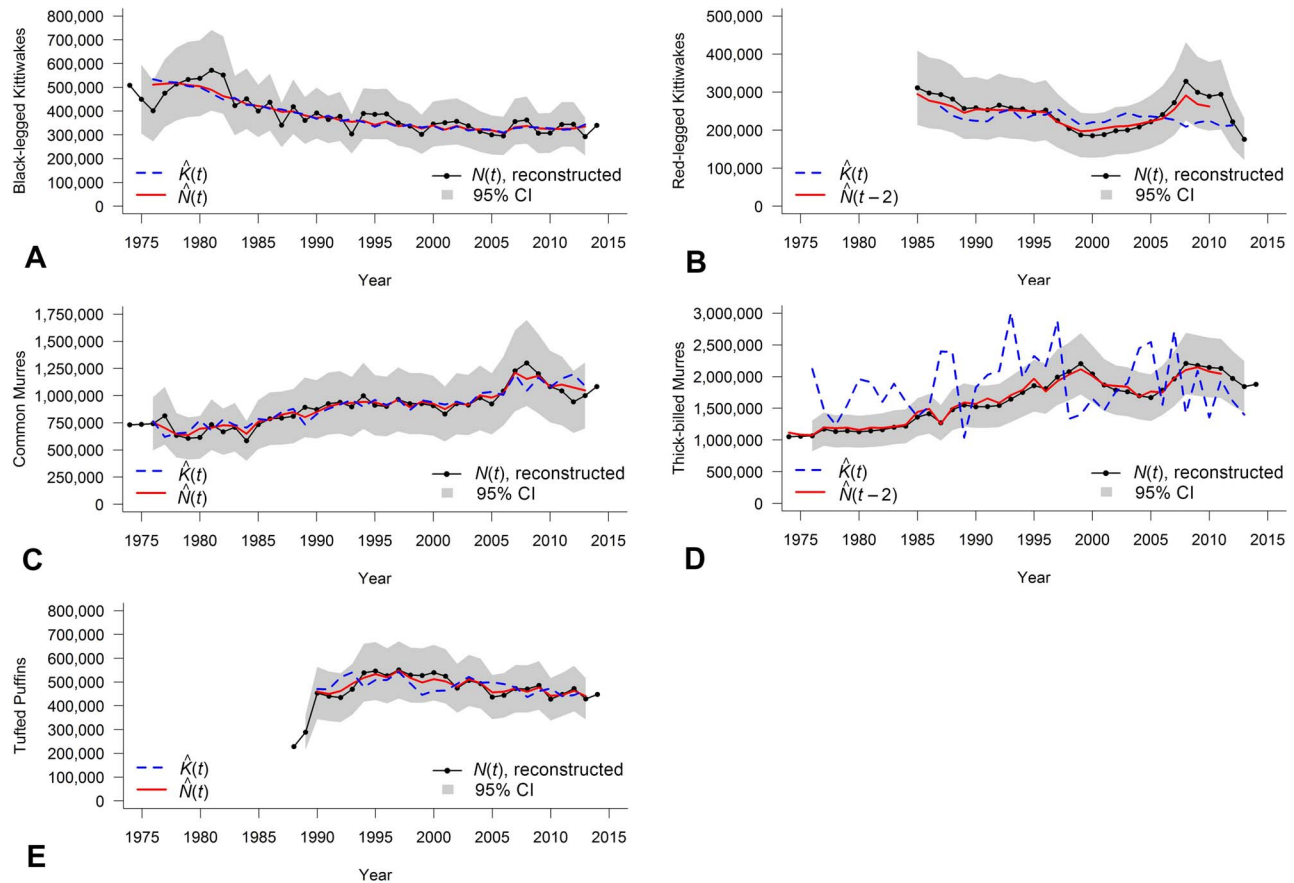


FIGURE 4. Most competitive covariate models of population dynamics across monitored seabird colonies in Alaska, USA, for (A–B) kittiwakes, (C–D) murres, and (E) puffins. Reconstructed population sizes, $N(t)$, are shown as black solid lines with 95% confidence intervals (gray shading). Solid red lines show model-estimated population sizes, $\hat{N}(t)$, and blue dashed lines indicate model-estimated carrying capacity, $\hat{K}(t)$. Note that 2 of the data points at either end of each time series were included in tests of time lags, and the last data point was included in rate of change calculations. The models shown here were the best of those that contained at least one environmental covariate (highlighted in bold font in Table 1), including: (A) euphausiids for Black-legged Kittiwakes, (B) PDOa for Red-legged Kittiwakes, (C) NPIAss and SST for Common Murres, (D) NPIAss for Thick-billed Murres, and (E) PDOa for Tufted Puffins.

a significant increase in SST and to contribute to negative effects in Red-legged Kittiwake populations. Thus, both species of kittiwake demonstrated the greatest vulnerability to significant increases in SST (Aleutian Islands) and decreases in secondary productivity (Gulf of Alaska). Warming waters over the past 4 decades seem likely to have affected the predictability or availability of their prey base.

Inverse relationships between Common Murre population rates of change and SST occurred across Alaska, particularly in 2 of the regions (Gulf of Alaska and Arctic) where their populations grew. These relationships are consistent with other findings on the circumpolar dynamics of Common Murre populations (Irons et al. 2008). Thick-billed Murres demonstrated similar relationships (Byrd et al. 2008, Renner et al. 2012, 2014), but showed higher sensitivity to the NPIAss. Their population rates of change were negatively related to the NPIAss

(analogous to the strength of the Aleutian Low Index), consistent with published effects on the productivity of other alcids (auklets [*Aethia* spp.]; Bond et al. 2011). Given that the carrying capacity of murres has increased over the last 4 decades, despite their inverse relationship with ocean warming, these results suggest that they may be more resilient to the observed environmental changes than the other species (Goyert et al. 2017). The high, positive rates of change that we documented in Common Murres may have represented a steady increase in K , despite drops in their population sizes as a response to environmental perturbation (Southwood 1981). This ability of murres to adapt to a volatile environment is supported by evidence of stable breeding success across several decades (Dragoo et al. 2015, Sydeman et al. 2017).

Compared with murres, the increased sensitivity of kittiwakes to degraded habitat in southern Alaska (e.g., from reduced secondary productivity and warmer waters)

likely can be attributed to differences in their foraging ecology. Black-legged Kittiwake rates of population change responded positively to habitat (e.g., euphausiids) and negatively to climate (e.g., the PDO) in the Arctic and Gulf of Alaska regions. In other words, their populations decreased in the Gulf of Alaska, where secondary productivity deteriorated, suggesting that kittiwakes rely on habitat that supports healthy euphausiid populations. Meanwhile, the carrying capacity of murre populations increased in these regions and elsewhere. The ability of murre to adapt to the environmental variables examined in our study likely had to do, at least in part, with their foraging flexibility. Murres are generalists with flexible diets that exploit the entire water column, adjust their foraging time budgets, and maintain high reproductive success when food supplies shift (Burger and Piatt 1990, Harding et al. 2007). In contrast, both kittiwake species face many constraints as surface feeders with rigid diets and limited energy budgets (Furness and Tasker 2000, Einoder 2009). Forage fish, in particular the young age classes depredated by seabirds, are highly sensitive to climatic cycles and shifts in environmental regimes due to their high demands for zooplankton (Batchelder et al. 2013). Unpredictable changes in the availability of forage fish can result in spatial or temporal (i.e. phenological) mismatches with seabird distributions (Burthe et al. 2012, Staudinger et al. 2013). The resulting prey limitation likely drove the population declines that we observed in kittiwakes. Our study suggests not only that kittiwakes are susceptible to degraded foraging habitat and climate change, but also that they are useful as marine indicators (Sydeman et al. 2017).

Given the vast spatial and temporal extent of our study, the data layers available from PMEL on the inferred historical distribution of zooplankton in Alaska were a valuable and unique source of information, despite their limitations. The marine ecosystem in Alaska is highly dynamic, and using modeled data as covariates adds a degree of uncertainty to our conclusions. Furthermore, although we minimized collinearity (i.e. nonindependence) among our model covariates, we acknowledge that climatic indices are defined by several interacting factors in the environment. Long-term studies that collect raw data on oceanographic and climatological factors throughout the North Pacific are crucial to avoid further uncertainty in predicting how wildlife populations will respond to climate change (Lindenmayer et al. 2012). Our attempt to explain the population dynamics of seabirds with respect to habitat and climatic variability provides preliminary evidence of effects of multidecadal processes. However, further analysis is required to document the influence of relationships (e.g., teleconnections) between the regional and global processes driving changes in the North Pacific Ocean (Di Lorenzo and Mantua 2016). This would help to identify the

nature of the trophic forcing that may serve as the link between warm waters, low availability of prey, and low breeding success in seabirds, particularly as these factors influence declines in kittiwake populations (Frank et al. 2006, Sydeman et al. 2017).

By including environmental factors in our models, we were able to estimate and explain population change in association with variation in climate and habitat quality. Further studies should examine the demographic factors that influence population change in seabirds. For example, kittiwake breeding success has been shown to vary with SST (Frederiksen et al. 2007) and prey availability (Robert et al. 2002, Frederiksen et al. 2005). Their survival, on the other hand, has been shown to be relatively constant, and likely shapes the long-term population trends of these long-lived species (as in other larids; Monaghan et al. 1989, Oro et al. 1999). While moderate changes in food supply may influence breeding success, only severe changes in prey availability are likely to affect survival, by failing to replenish body reserves (Cairns 1987, Oro and Furness 2002). Such extremely poor conditions can influence the mortality of seabirds outside the breeding season (Orben et al. 2015). Thus, breeding success most likely contributes to the annual population dynamics of our 5 study species, whereas survival probably drives their long-term population trends.

Our results provide evidence of strong bottom-up forcing in Alaskan ecosystems, likely mediated by high primary and secondary productivity during negative (i.e. cold) PDO regimes (Pinchuk et al. 2008) and low productivity during warming events associated with anomalies in the Aleutian Low Index and NPI (Springer 1998). The extensive spatiotemporal coverage of our study restricted our analysis to examining bottom-up influences on our focal species. Top-down forcing also occurs, particularly at high latitudes, in low-productivity marine environments (Frank et al. 2006) or in unfavorably warm years (Hunt et al. 2002), but its source is generally specific to each colony (e.g., from predation by *Larus* spp., bald eagles [*Haliaeetus leucocephalus*], or Arctic fox [*Vulpes lagopus*] introductions; Regehr and Montevecchi 1997, Byrd et al. 2005). Commercial fisheries may impose some pressure on prey availability but, because they don't generally target forage fish, their impacts are more likely to be related to seabird bycatch (Zydulis et al. 2013). Competition with other top predators (e.g., marine mammals; Sinclair et al. 2008, Estes et al. 2009) could additionally affect populations of Alaskan seabirds. Kittiwakes may be more vulnerable than murres to the effects of competitors such as pink salmon (*Oncorhynchus gorbuscha*; Sydeman et al. 2017), particularly in warm PDO years (Mantua et al. 1997, Springer and van Vliet 2014). Future research should consider the potential of multispecies models to gauge the sensitivity of Alaskan

seabird population dynamics to interspecific competition and/or facilitation.

This study supports the use of a biologically relevant scale of analysis (Scales et al. 2017) to identify environmental influences on wildlife population dynamics. Our ecoregion-level analyses were essential to revealing euphausiid concentrations as a significant predictor of rates of seabird population change. Extracting covariate data at a resolution consistent with the foraging range of our study species (e.g., ~90 km; Smith et al. 2012) avoided diluting the effect of functional relationships. Had we analyzed these data only at the state-wide level, the climatic covariates would have emerged as the most important predictors because they did not vary among ecoregions. Understanding the indirect links between climate change and forage availability is crucial to identify the ecological drivers of population change and inform monitoring at regional scales. Isolating these factors is necessary to develop effective conservation policies, such as protections for Important Bird Areas (M. A. Smith personal communication), to enhance the success of population management and habitat mitigation under intensified environmental volatility.

ACKNOWLEDGMENTS

We are grateful for manuscript comments provided by Brie A. Drummond, Heather M. Renner, and Jeremy Littell. Courtney Conway (Idaho Cooperative Fish and Wildlife Research Unit) provided additional resources. We thank several data contributors, including: past and present Alaska Maritime National Wildlife Refuge (AMNWR) biologists (especially Marc Romano, Leslie Slater, Nora Rojek, Don Dragoo, Arthur Kettle, Jeff Williams, and Vernon Byrd); the U.S. Fish and Wildlife Service (USFWS) Office of Migratory Bird Management, particularly Dave Irons and Lisa Sheffield; Melissa Cady and the Alaska Peninsula/Becharof National Wildlife Refuge (NWR); Patrick Walsh and the Togiak NWR; Brian McCaffery and the Yukon Delta NWR; U.S. Geological Survey (USGS), especially Scott Hatch; Alaska Department of Fish and Game (ADF&G), particularly Ed Weiss; and Ed Murphy and Dean Kildaw at the University of Alaska, Fairbanks. The findings and conclusions in this article are those of the author(s) and do not necessarily represent the views of the U.S. Fish and Wildlife Service.

Funding statement: We appreciate the funding provided by the U.S. Fish and Wildlife Service Natural Resource Program Center. The Center did not have any input into the content of the manuscript and did not require approval of the manuscript before submission or publication.

Ethics statement: Our research followed the *Guidelines to the Use of Wild Birds in Research*.

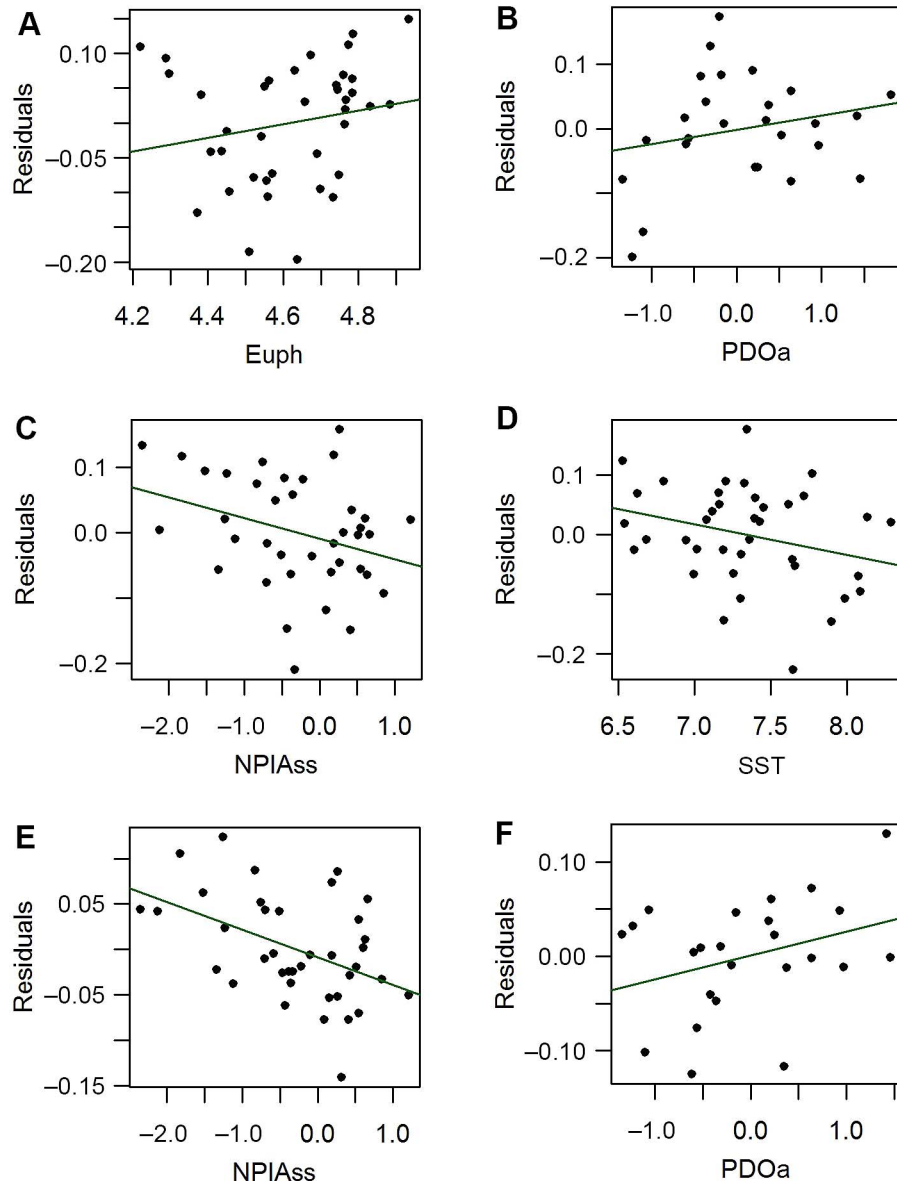
Author contributions: H.F.G., E.O.G., and A.J.P. conceived the idea and design behind this research. H.F.G. analyzed the data and wrote the paper, with assistance from E.O.G. and A.J.P.

LITERATURE CITED

- Ainley, D. G., D. N. Nettleship, H. R. Carter, and A. E. Storey (2002). Common Murre (*Uria aalge*), version 2.0. In *The Birds of North America* (A. F. Poole and F. B. Gill, Editors). Cornell Lab of Ornithology, Ithaca, NY, USA. <https://doi.org/10.2173/bna.666>
- Bartoń, K. (2015). MuMIn: Multi-model inference. R package version 1.13.4. <https://CRAN.R-project.org/package=MuMIn>
- Batchelder, H. P., K. L. Daly, C. S. Davis, R. Ji, M. D. Ohman, W. T. Peterson, and J. A. Runge (2013). Climate impacts on zooplankton population dynamics in coastal marine ecosystems. *Oceanography* 26:34–51.
- Bond, A. L., I. L. Jones, W. J. Sydeman, H. L. Major, S. Minobe, J. C. Williams, and G. V. Byrd (2011). Reproductive success of planktivorous seabirds in the North Pacific is related to ocean climate on decadal scales. *Marine Ecology Progress Series* 424:205–218.
- Burger, A. E., and J. F. Piatt (1990). Flexible time budgets in breeding Common Murres: Buffers against variable prey availability. In *Auks at Sea* (S. G. Sealy, Editor). *Studies in Avian Biology* 14:71–83.
- Burnham, K. P., and D. R. Anderson (2002). *Model Selection and Multimodel Inference: A Practical Information-Theoretic Approach*, second edition. Springer-Verlag, New York, NY, USA.
- Burthe, S., F. Daunt, A. Butler, D. Elston, M. Frederiksen, D. Johns, M. Newell, S. Thackeray, and S. Wanless (2012). Phenological trends and trophic mismatch across multiple levels of a North Sea pelagic food web. *Marine Ecology Progress Series* 454: 119–133.
- Byrd, G. V., and J. C. Williams (1993). Red-legged Kittiwake (*Rissa brevirostris*), version 2.0. In *The Birds of North America* (A. F. Poole and F. B. Gill, Editors). Cornell Lab of Ornithology, Ithaca, NY, USA. <https://doi.org/10.2173/bna.60>
- Byrd, G. V., H. M. Renner, and M. Renner (2005). Distribution patterns and population trends of breeding seabirds in the Aleutian Islands. *Fisheries Oceanography* 14:139–159.
- Byrd, G. V., W. J. Sydeman, H. M. Renner, and S. Minobe (2008). Responses of piscivorous seabirds at the Pribilof Islands to ocean climate. *Deep Sea Research Part II: Topical Studies in Oceanography* 55:1856–1867.
- Cairns, D. K. (1987). Seabirds as indicators of marine food supplies. *Biological Oceanography* 5:261–271.
- Dennis, B., and M. L. Taper (1994). Density dependence in time series observations of natural populations: Estimation and testing. *Ecological Monographs* 64:205–224.
- Descamps, S., T. Anker-Nilssen, R. T. Barrett, D. B. Irons, F. Merkel, G. J. Robertson, N. G. Yoccoz, M. L. Mallory, W. A. Montevecchi, D. Boertmann, Y. Artukhin, et al. (2017). Circumpolar dynamics of a marine top-predator track ocean warming rates. *Global Change Biology* 23:3770–3780.
- Di Lorenzo, E., and N. Mantua (2016). Multi-year persistence of the 2014/15 North Pacific marine heatwave. *Nature Climate Change* 6:1042–1047.
- Dragoo, D. E., H. M. Renner, and D. B. Irons (2015). *Breeding Status and Population Trends of Seabirds in Alaska, 2014*. Report AMNWR 2015/03, U.S. Fish and Wildlife Service, Homer, AK, USA.
- Drummond, B. A. (2016). *Summary Figures of Diet Data from Birds on the Alaska Maritime National Wildlife Refuge*. Report

- AMNWR 2016/06, U.S. Fish and Wildlife Service, Homer, AK, USA.
- Einoder, L. D. (2009). A review of the use of seabirds as indicators in fisheries and ecosystem management. *Fisheries Research* 95:6–13.
- Estes, J. A., D. F. Doak, A. M. Springer, and T. M. Williams (2009). Causes and consequences of marine mammal population declines in southwest Alaska: A food-web perspective. *Philosophical Transactions of the Royal Society of London, Series B* 364:1647–1658.
- Flato, G. M., G. J. Boer, W. G. Lee, N. A. McFarlane, D. Ramsden, M. C. Reader, and A. J. Weaver (2000). The Canadian Centre for Climate Modelling and Analysis global coupled model and its climate. *Climate Dynamics* 16:451–467.
- Frank, K. T., B. Petrie, N. L. Shackell, and J. S. Choi (2006). Reconciling differences in trophic control in mid-latitude marine ecosystems. *Ecology Letters* 9:1096–1105.
- Frederiksen, M., M. Edwards, R. A. Mavor, and S. Wanless (2007). Regional and annual variation in Black-legged Kittiwake breeding productivity is related to sea surface temperature. *Marine Ecology Progress Series* 350:137–143.
- Frederiksen, M., P. J. Wright, M. P. Harris, R. A. Mavor, M. Heubeck, and S. Wanless (2005). Regional patterns of kittiwake *Rissa tridactyla* breeding success are related to variability in sandeel recruitment. *Marine Ecology Progress Series* 300:201–211.
- Furness, R. W., and M. L. Tasker (2000). Seabird-fishery interactions: Quantifying the sensitivity of seabirds to reductions in sandeel abundance, and identification of key areas for sensitive seabirds in the North Sea. *Marine Ecology Progress Series* 202:253–264.
- Garton, E. O., J. W. Connelly, J. S. Horne, C. A. Hagen, A. Moser, and M. Schroeder (2011). Greater Sage-Grouse population dynamics and probability of persistence. In *Greater Sage-Grouse: Ecology and Conservation of a Landscape Species and Its Habitats* (S. T. Knick and J. W. Connelly, Editors). *Studies in Avian Biology* 38:293–381.
- Garton, E. O., C. A. Hagen, G. M. Beauprez, S. C. Kyle, J. C. Pitman, D. G. Schoeling, and W. E. Van Pelt (2016). Population dynamics of the Lesser Prairie-Chicken. In *Ecology and Conservation of Lesser Prairie-Chickens* (D. A. Haukos and C. W. Boal, Editors). *Studies in Avian Biology* 48:49–76.
- Gaston, A. J., and J. M. Hipfner (2000). Thick-billed Murre (*Uria lomvia*), version 2.0. In *The Birds of North America* (A. F. Poole and F. B. Gill, Editors). Cornell Lab of Ornithology, Ithaca, NY, USA. <https://doi.org/10.2173/bna.497>
- Goyert, H. F., E. O. Garton, B. A. Drummond, and H. M. Renner (2017). Density dependence and changes in the carrying capacity of Alaskan seabird populations. *Biological Conservation* 209:178–187.
- Griffies, S. M., A. Biastoch, C. Böning, F. Bryan, G. Danabasoglu, E. P. Chassignet, M. H. England, R. Gerdes, H. Haak, R. W. Hallberg, W. Hazeleger, et al. (2009). Coordinated Ocean-ice Reference Experiments (COREs). *Ocean Modelling* 26:1–46.
- Harding, A. M. A., J. F. Piatt, J. A. Schmutz, M. T. Shultz, T. I. Van Pelt, A. B. Kettle, and S. G. Speckman (2007). Prey density and the behavioral flexibility of a marine predator: The Common Murre (*Uria aalge*). *Ecology* 88:2024–2033.
- Hatch, S. A., G. J. Robertson, and P. H. Baird (2009). Black-legged Kittiwake (*Rissa tridactyla*), version 2.0. In *The Birds of North America* (A. F. Poole, Editor). Cornell Lab of Ornithology, Ithaca, NY, USA. <https://doi.org/10.2173/bna.92>
- Hermann, A. J., G. A. Gibson, N. A. Bond, E. N. Curchitser, K. Hedstrom, W. Cheng, M. Wang, P. J. Stabeno, L. Eisner, and K. D. Ciciel (2013). A multivariate analysis of observed and modeled biophysical variability on the Bering Sea shelf: Multidecadal hindcasts (1970–2009) and forecasts (2010–2040). *Deep Sea Research Part II: Topical Studies in Oceanography* 94:121–139.
- Hodum, P. J. (2013). Consideration of the California/Oregon/Washington population of the Tufted Puffin (*Fratercula cirrhata*) as a distinct population segment under the U.S. Endangered Species Act. In *Petition to List the Contiguous U.S. Distinct Population Segment of Tufted Puffin (Fratercula cirrhata) Under the Endangered Species Act*. National Resources Defense Council, New York, NY, USA. pp. 45–51. <http://ecos.fws.gov/ecp0/profile/speciesProfile?slid=430>
- Huang, B., V. F. Banzon, E. Freeman, J. Lawrimore, W. Liu, T. C. Peterson, T. M. Smith, P. W. Thorne, S. D. Woodruff, and H.-M. Zhang (2015). Extended reconstructed sea surface temperature version 4 (ERSST.v4). Part I: Upgrades and intercomparisons. *Journal of Climate* 28:911–930.
- Hunt, G. L., P. Stabeno, G. Walters, E. Sinclair, R. D. Brodeur, J. M. Napp, and N. A. Bond (2002). Climate change and control of the southeastern Bering Sea pelagic ecosystem. *Deep Sea Research Part II: Topical Studies in Oceanography* 49:5821–5853.
- Irons, D. B., T. Anker-Nilssen, A. J. Gaston, G. V. Byrd, K. Falk, G. Gilchrist, M. Hario, M. Hjernerquist, Y. V. Krasnov, A. Mosbech, B. Olsen, et al. (2008). Fluctuations in circumpolar seabird populations linked to climate oscillations. *Global Change Biology* 14:1455–1463.
- Ito, M., A. Takahashi, N. Kokubun, A. S. Kitaysky, and Y. Watanuki (2010). Foraging behavior of incubating and chick-rearing Thick-billed Murres *Uria lomvia*. *Aquatic Biology* 8:279–287.
- Lindenmayer, D. B., G. E. Likens, A. Andersen, D. Bowman, C. M. Bull, E. Burns, C. R. Dickman, A. A. Hoffmann, D. A. Keith, M. J. Liddell, A. J. Lowe, et al. (2012). Value of long-term ecological studies. *Austral Ecology* 37:745–757.
- Mantua, N. J., S. R. Hare, Y. Zhang, J. M. Wallace, and R. C. Francis (1997). A Pacific interdecadal climate oscillation with impacts on salmon production. *Bulletin of the American Meteorological Society* 78:1069–1079.
- Monaghan, P., J. D. Uttley, M. D. Burns, C. Thaine, and J. Blackwood (1989). The relationship between food supply, reproductive effort and breeding success in Arctic Terns *Sterna paradisaea*. *Journal of Animal Ecology* 58:261–274.
- Orben, R. A., R. Paredes, D. D. Roby, D. B. Irons, and S. A. Shaffer (2015). Body size affects individual winter foraging strategies of Thick-billed Murres in the Bering Sea. *Journal of Animal Ecology* 84:1589–1599.
- Oro, D., and R. W. Furness (2002). Influences of food availability and predation on survival of kittiwakes. *Ecology* 83:2516–2528.
- Oro, D., R. Pradel, and J.-D. Lebreton (1999). Food availability and nest predation influence life history traits in Audouin's Gull, *Larus audouinii*. *Oecologia* 118:438–445.
- Piatt, J. F., and A. S. Kitaysky (2002). Tufted Puffin (*Fratercula cirrhata*), version 2.0. In *The Birds of North America* (A. F. Poole and F. B. Gill, Editors). Cornell Lab of Ornithology, Ithaca, NY, USA. <https://doi.org/10.2173/bna.708>

- Piatt, J. F., A. M. A. Harding, M. Shultz, S. G. Speckman, T. I. Van Pelt, G. S. Drew, and A. B. Kettle (2007). Seabirds as indicators of marine food supplies: Cairns revisited. *Marine Ecology Progress Series* 352:221–234.
- Pinchuk, A. I., K. O. Coyle, and R. R. Hopcroft (2008). Climate-related variability in abundance and reproduction of euphausiids in the northern Gulf of Alaska in 1998–2003. *Progress in Oceanography* 77:203–216.
- Pohlert, T. (2016). trend: Non-parametric trend tests and change-point detection. R package version 0.2.0. <https://CRAN.R-project.org/package=trend>
- R Core Team (2017). R: A Language and Environment for Statistical Computing. R Foundation for Statistical Computing, Vienna, Austria. <https://www.r-project.org/>
- Regehr, H. M., and W. A. Montevecchi (1997). Interactive effects of food shortage and predation on breeding failure of Black-legged Kittiwakes: Indirect effects of fisheries activities and implications for indicator species. *Marine Ecology Progress Series* 155:249–260.
- Renner, H. M., B. A. Drummond, A.-M. Benson, and R. Paredes (2014). Reproductive success of kittiwakes and murres in sequential stages of the nesting period: Relationships with diet and oceanography. *Deep Sea Research Part II: Topical Studies in Oceanography* 109:251–265.
- Renner, H. M., F. Mueter, B. A. Drummond, J. A. Warzybok, and E. H. Sinclair (2012). Patterns of change in diets of two piscivorous seabird species during 35 years in the Pribilof Islands. *Deep Sea Research Part II: Topical Studies in Oceanography* 65–70:273–291.
- Robert, M. S., B. I. David, K. Max, B. Jeb, G. R. J. Patrick, D. R. Daniel, and D. B. Evelyn (2002). Short-term fluctuations in forage fish availability and the effect on prey selection and brood-rearing in the Black-legged Kittiwake *Rissa tridactyla*. *Marine Ecology Progress Series* 236:273–287.
- Scales, K. L., E. L. Hazen, M. G. Jacox, C. A. Edwards, A. M. Boustany, M. J. Oliver, and S. J. Bograd (2017). Scale of inference: On the sensitivity of habitat models for wide-ranging marine predators to the resolution of environmental data. *Ecography* 40:210–220.
- Shealer, D. A. (2001). Foraging behavior and food of seabirds. In *Biology of Marine Birds* (E. A. Schreiber and J. Burger, Editors). CRC Press, Boca Raton, FL, USA. pp. 137–177.
- Sinclair, E. H., L. S. Vlietstra, D. S. Johnson, T. K. Zeppelin, G. V. Byrd, A. M. Springer, R. R. Ream, and G. L. Hunt, Jr. (2008). Patterns in prey use among fur seals and seabirds in the Pribilof Islands. *Deep Sea Research Part II: Topical Studies in Oceanography* 55:1897–1918.
- Smith, M. A., N. J. Walker, C. M. Free, M. J. Kirchoff, N. Warnock, A. Weinstein, T. Distler, and I. J. Stenhouse (2012). Marine Important Bird Areas in Alaska: Identifying Globally Significant Sites Using Colony and At-Sea Survey Data. Audubon Alaska, Anchorage, AK, USA.
- Southwood, T. R. E. (1981). Binomic strategies and population parameters. In *Theoretical Ecology* (R. M. May, Editor). Sinauer Associates, Sunderland, MA, USA. pp. 30–52.
- Springer, A. M. (1998). Is it all climate change? Why marine bird and mammal populations fluctuate in the North Pacific. In *Biotic Impacts of Extratropical Climate Variability in the Pacific: Proceedings of the 10th 'Aha Huli'ko'a Hawaiian Winter Workshop, 1998* (G. Holloway, P. Müller, and D. Henderson, Editors). SOEST (School of Ocean and Earth Science and Technology) Special Publication, University of Hawai'i at Manoa, Honolulu, HI, USA. pp. 109–120.
- Springer, A. M., and G. B. van Vliet (2014). Climate change, pink salmon, and the nexus between bottom-up and top-down forcing in the subarctic Pacific Ocean and Bering Sea. *Proceedings of the National Academy of Sciences USA* 111: E1880–E1888.
- Staudinger, M. D., S. L. Carter, M. S. Cross, N. S. Dubois, J. E. Duffy, C. Enquist, R. Griffis, J. J. Hellmann, J. J. Lawler, J. O'Leary, S. A. Morrison, et al. (2013). Biodiversity in a changing climate: A synthesis of current and projected trends in the US. *Frontiers in Ecology and the Environment* 11:465–473.
- Sydeman, W. J., S. A. Thompson, J. F. Piatt, M. García-Reyes, S. Zador, J. C. Williams, M. Romano, and H. M. Renner (2017). Regionalizing indicators for marine ecosystems: Bering Sea–Aleutian Island seabirds, climate, and competitors. *Ecological Indicators* 78:458–469.
- Williams, C. T., S. J. Iverson, and C. L. Buck (2008). Stable isotopes and fatty acid signatures reveal age- and stage-dependent foraging niches in Tufted Puffins. *Marine Ecology Progress Series* 363:287–298.
- Zuur, A. F., E. N. Ieno, and C. S. Elphick (2010). A protocol for data exploration to avoid common statistical problems. *Methods in Ecology and Evolution* 1:3–14.
- Žydelis, R., C. Small, and G. French (2013). The incidental catch of seabirds in gillnet fisheries: A global review. *Biological Conservation* 162:76–88.



APPENDIX FIGURE 5. Strength of the effect from the highest-weighted climatic and/or habitat covariate(s) in the most competitive models of population dynamics across monitored seabird colonies in Alaska, USA, for (A) Black-legged Kittiwakes, (B) Red-legged Kittiwakes, (C–D) Common Murres, (E) Thick-billed Murres, and (F) Tufted Puffins. The y-axes here show residuals from a specification of the most competitive covariate model (highlighted in bold font in Table 1 and graphed in Figure 4), excluding the covariate shown on the x-axis. These residuals indicate the amount of variation captured by the specified model, to highlight the significance of the effect that each covariate had on modeling population rates of change. Covariates included: euphausiids (Euph), annual Pacific Decadal Oscillation (PDOa), North Pacific Index spring anomaly (NPIAss), and sea surface temperature (SST).