

Crop Diversification for Sustainable Insect Pest Management in Eggplant (Solanales: Solanaceae)

Authors: Sujayanand, G. K., Sharma, R. K., Shankarganesh, K., Saha, Supradip, and Tomar, R. S.

Source: Florida Entomologist, 98(1) : 305-314

Published By: Florida Entomological Society

URL: <https://doi.org/10.1653/024.098.0149>

BioOne Complete (complete.BioOne.org) is a full-text database of 200 subscribed and open-access titles in the biological, ecological, and environmental sciences published by nonprofit societies, associations, museums, institutions, and presses.

Your use of this PDF, the BioOne Complete website, and all posted and associated content indicates your acceptance of BioOne's Terms of Use, available at www.bioone.org/terms-of-use.

Usage of BioOne Complete content is strictly limited to personal, educational, and non - commercial use. Commercial inquiries or rights and permissions requests should be directed to the individual publisher as copyright holder.

BioOne sees sustainable scholarly publishing as an inherently collaborative enterprise connecting authors, nonprofit publishers, academic institutions, research libraries, and research funders in the common goal of maximizing access to critical research.

Crop diversification for sustainable insect pest management in eggplant (Solanales: Solanaceae)

G. K. Sujayanand^{1,4,*}, R. K. Sharma¹, K. Shankarganesh¹, Supradip Saha²
and R. S. Tomar³

Abstract

An experiment was conducted to manage the eggplant (brinjal) shoot and fruit borer *Leucinodes orbonalis* Guenée (Lepidoptera: Crambidae), the leafhopper *Amrasca biguttula biguttula* (Ishida) (Hemiptera: Cicadellidae), and the whitefly *Bemisia tabaci* (Gennadius) (Hemiptera: Aleyrodidae) during *kharif*, the southwest monsoon season (Jul-Oct), in 2010 and 2011 at an experimental farm at the Division of Entomology, Indian Agricultural Research Institute, New Delhi. The experiment consisted of 7 different treatments with brinjal or eggplant 'Pusa Kranti', *Solanum melongena* L. (Solanales: Solanaceae), as the main crop and coriander, marigold or mint as intercrops, along with a border crop (maize or cowpea) acting as refuge crops. Treatment T1 (maize as border crop and coriander as intercrop) harbored the smallest cumulative mean leafhopper population (6.90 insects per 3 leaves per plant) and the next to smallest mean whitefly population (9.64 insects per 3 leaves per plant) during monsoon season of 2010 and 2011. Treatment T3 (maize as border crop and marigold as intercrop) was second best in reducing the leafhopper population (7.27 insects per 3 leaves per plant), while it was the best treatment in reducing the whitefly population (8.36 insects per 3 leaves per plant). The sole crop (T7) harbored the largest whitefly (20.17 insects per 3 leaves per plant) and leafhopper (12.61 insects per 3 leaves per plant) populations among the 7 treatments. The lowest mean percentage fruit infestation was recorded from treatment T1 (by number: 27.72; by weight: 27.81). All the treatments involving intercrops showed significantly lower percentage fruit infestation by *L. orbonalis* than eggplant alone (T7, control), which showed 37.73% infestation by number of fruits and 38.13% by weight of the fruits. The greatest mean number of coccinellids (1.25 per plant) and largest Shannon-Wiener indices were recorded from treatment T1 (maize and coriander). The smallest mean number of coccinellids (0.37 per plant) and smallest Shannon-Wiener indices were recorded from the sole crop control, T7. Various plant volatiles present in the intercrop were identified by the thermal desorption technique. Twenty one volatile compounds were present in coriander, 7 in marigold, and 18 in mint. The current state of knowledge of the behavioral effects (repellency, attractancy, no effect) of each chemical with respect the various herbivorous insects and natural enemies is summarized and this information will facilitate quantitative studies on how different pest and beneficial insects respond to plant volatiles in polycultures.

Key Words: eggplant shoot and fruit borer; intercrop; border crop; Coccinellidae; pest suppression

Resumen

Se realizó un experimento para controlar al barrenador de brote y fruta de la berenjena [*Leucinodes orbonalis* (Guenne) (Lepidoptera Crambidae)], el saltahoja [*Amrasca biguttula biguttula* (Ishida) (Hemiptera: Cicadellidae)] y la mosca blanca [*Bemisia tabaci* (Gennadius) (Hemiptera: Aleyrodidae)] durante el *kharif*, que es la temporada de monzón del suroeste (de julio a octubre), en el 2010 y 2011 en la Granja Experimental de la División de Entomología, Indian Agricultural Research Institute, de Nueva Delhi. El experimento consistió en 7 tratamientos diferentes utilizando el cultivar de berenjena 'Pusa kranti' como el cultivo principal y cilantro, caléndula y menta como cultivos intercalados junto con 2 cultivos de borde (maíz y caupí) que actúan como refugios. El tratamiento T₁ (maíz como cultivo de borde y cilantro como cultivo intercalado) registró la población de saltahoja más baja (6.90 insectos por 3 hojas por planta) y fue el segundo mejor en el promedio de la población de mosca blanca (9.64 insectos por 3 hojas por planta) durante la época de monzón del 2010 y 2011. El tratamiento T₃ (maíz como cultivo de borde y caléndula como cultivo intercalado) fue el segundo mejor en la reducción de saltahoja (7.27 insectos por tres hojas por planta), y a su vez fue el mejor tratamiento en la reducción de la población de mosca blanca (8.36 insectos por 3 hojas por planta). El cultivo único (T₇) registró la población más alta de mosca blanca (20.17 insectos por 3 hojas por planta) y de saltahoja (12.61 insectos 3 hojas por planta) entre los 7 tratamientos. Se registró el menor porcentaje de frutas infestadas en el Tratamiento T₁ (27.72: basado en el número; y 27.81 basado en el peso). Todos los tratamientos con cultivos intercalados tenían el porcentaje de las frutas infestadas por *Leucinodes orbonalis* (Guenne) significativamente menor basado en el número y el peso que sola la berenjena, (T₇, control) lo cual fue una infestación del 37.73% del número de frutas y 38.13% por el peso de las frutas. El promedio mayor de número de coccinélidos (1.25 por planta) y mayor índice de Shannon-Wiener se registraron en el tratamiento T₁ (maíz y cilantro). El menor número de coccinélidos (0.37 por planta) y menor índice de Shannon-Wiener se registraron de las plantas del tratamiento del cultivo solo, T₇. Varios compuestos volátiles de plantas presentes en el cultivo intercalado se identificaron mediante la técnica de desorción térmica. Veintiún compuestos volátiles

¹Division of Entomology, I.A.R.I., New Delhi 110 012, India

²Division of Agricultural Chemicals, I.A.R.I., New Delhi 110 012, India

³Indian Agricultural Statistics Research Institute, New Delhi 110 012, India

⁴Present address: Division of Crop Protection, Indian Institute of Pulses Research, Kanpur, India

*Corresponding author; E-mail: sujayanand_agri@yahoo.co.in

estuvieron presentes en el cilantro, el 7 de caléndula, y 18 en la menta. El estado actual del conocimiento de los efectos en el comportamiento (repelencia, atrayente, sin efecto) de cada producto químico con respecto a los diversos insectos herbívoros y enemigos naturales se resume y esta información facilitará estudios cuantitativos sobre cómo diferentes plagas y los insectos beneficiosos responder a plantar volátiles policultivos.

Palabras Clave: barrenador de los brotes y frutas de berenjena; cultivos intercalados, cultivos del borde; Coccinellidae, supresión de plagas

Eggplant, *Solanum melongena* L. (Solanales: Solanaceae), is an important vegetable crop in Southeast Asia. It was cultivated on 18.53 lakh ha (1,853,000 ha) with a production of 48,424,295 tonnes worldwide during 2012 (FAO 2014). Numerous insect pests infest eggplant, among them the fruit borer *Leucinodes orbonalis* Guenée (Lepidoptera: Crambidae) and sucking pests like the leafhopper *Amrasca biguttula biguttula* (Ishida) (Hemiptera: Cicadellidae) and the whitefly *Bemisia tabaci* (Gennadius) (Hemiptera: Aleyrodidae), cause major damage in the Indo-Gangetic Plain region of India (Bhauria et al. 1999). Synthetic broad-spectrum insecticides have been used by farmers to manage the insect menace in India (Alam et al. 2006) and Bangladesh (Rashid et al. 2003). Repeated insecticidal sprays resulted in the development of resistance in *L. orbonalis* to organophosphate and synthetic pyrethroids (Ali 1994; Alam et al. 2003; Botre et al. 2014), besides also resulting in residue on the produce, and in resurgence of non-target insect pests. To manage insect pests in an eco-friendly manner, a pest-suppressive agro-ecosystem has to be considered. A pest-suppressive agro-ecosystem can be designed by identifying a suitable intercrop having insect pest deterrence, and a border crop enhancing natural enemy activity by acting as a refugium (Landis et al. 2000). Since 300 B.C., intercropping has been practiced in Greece, which indicates that polyculture or intercropping is a traditional farming practice (Papanastasis et al. 2004). In India, the impact of intercropping on major insect pests and beneficial insects was studied in a wide range of crops including pulses (Prasad et al. 1987; Prasad et al. 1988; Mehto et al. 1988; Sekhar et al. 1997), cereals and oil seeds (Singh et al. 1991a,b) from the mid 1970s to early 1990s. Practicing multi cropping on a farm increases the vegetation and insect diversity compared with practicing monoculture. The continuous supply of floral rewards and alternate food sources for the natural enemies helps to increase their abundance, diversity and conservation. Herbivorous insect pests of eggplant may be less able to discern and respond to the odors of their host when additional non-host plants in the form of intercrop or border crop are present (Andow 1991). Chemicals from the intercrop exert an odor-masking effect on the insect seeking its host (Bernays & Chapman 1994), ultimately resulting in lower incidence of insect pests in the main crop. Thus, habitat management can be effectively integrated with bio-intensive integrated pest management (IPM) packages. Hence, in the present study, the suitability of 3 intercrops and 2 border crops was evaluated for the management of 3 major insect pests on eggplant in India.

Materials and Methods

Seeds of the eggplant cultivar 'Pusa Kranti' were sown in a raised-bed nursery during Jun 2010 and Jun 2011 with the onset on the monsoon season in India. Thirty day old healthy seedlings free from mechanical damage were chosen for planting on the experimental farm at the Division of Entomology, Indian Agricultural Research Institute, New Delhi 28.08 °N and 77.12 °E. The ratio of fertilizer (N:P:K) applied to the experimental field was 100:80:60/ha. Nitrogen was applied in 2 split doses, 50 per cent at field preparation before transplanting and 50 per cent at flowering to raise a healthy crop. Whenever soil moisture

in the field was deficient, it was restored by flood irrigation. Five hand hoeings were done for managing the weeds.

TREATMENTS

The experiment had 7 treatments in a randomized block design, and each treatment was replicated thrice with a plot size of 5 m × 5 m per replicate. A buffer zone of 1 m was maintained between the plots. In each plot spacing (row to row × plant to plant) of 60 cm × 45 cm was maintained. The intercrops, coriander ('Pusa Harit') and mint (land race), were sown and raised in the main field, while the intercrop, marigold ('AF/SR/12-1'), was sown in a raised-bed nursery and 1-month-old healthy seedlings were transplanted to the main field. A ratio of 6:1 was maintained for the main crop to intercrop. The border crops, maize ('PEMH-2') and cowpea ('Pusa Komal') were sown on the same day of eggplant transplantation to the main field. The treatments with intercrop and border crop, respectively, were as follows: T1, coriander and maize; T2, coriander and cowpea; T3, marigold and maize; T4, marigold and cowpea; T5, mint and maize; T6, mint and cowpea; and T7 (sole crop: control), without any intercrop or border crop.

OBSERVATIONS ON INSECT POPULATIONS AND YIELDS

In each treatment, 5 plants were selected randomly and tagged for weekly monitoring and recording of the insect pest and natural enemy populations. Weekly observations on the numbers of leafhoppers (*A. biguttula biguttula*) (32nd Standard Meteorological Week [SMW] to 41st SMW; i.e., 06-12-Aug to 08-14 Oct) were recorded from a leaf from the top, middle and bottom of each plant. Similar sampling methodology was followed for recording the white fly (*Bemisia tabaci*) population from 32nd SMW to 41st SMW (06-12-Aug to 08-14 Oct). The numbers of coccinellid beetles present on those 5 tagged plants in each plot were recorded from the 32nd SMW to 41st SMW. Egg plant fruits were harvested regularly every 8–9th day commencing from the first harvest i.e., 75 days after transplanting. The healthy and damaged fruits were sorted out by visual examination, and percentage fruit infestation both by number and weight of fruits were calculated for each treatment.

After 55–60 days of transplanting, the numbers of natural enemies present in eggplant in each treatment were recorded visually and the insects were collected for identification. The numbers of individuals per species and numbers of individuals of all species in different treatments were used for diversity analysis through the Shannon-Wiener index. This index combines species richness and evenness in a habitat and was described by Shannon (1948). It is calculated by using the equation

$$H' = -\sum P_i (\ln P_i)$$

where $P_i = n_i/N$ (n_i = number of individuals of a species; N = number of individuals in each treatment) and \ln = the natural logarithm.

Generally, for a sample size with more than 5 species, the index will range from 0 to 4.5 (Shannon 1948). A value near zero indicates that the treatment was dominated by a single species, and a value near 4.5 indicates that the number of individuals was distributed evenly overall the species.

STATISTICAL ANALYSES

Data were analyzed by using SAS version 9.2. The population data were square-root transformed, and the percentage fruit infestation data were arcsine transformed.

IDENTIFICATION OF INTERCROP (CORIANDER, MARIGOLD, AND MINT) LEAF VOLATILES BY THE THERMAL DESORPTION TECHNIQUE

Gas chromatography coupled with mass spectrometry (GC-MS) was performed with an Agilent 7890 GC equipped with an Agilent 5975 mass quadrupole detector (Agilent Technologies, Palo Alto, California) following the method described by Zunin (2004). Volatiles were sampled by using the thermal desorption (TD) technique. Functioning of the TD auto sampler (TDS2, Markes International, Unity and Ultra, Cincinnati, USA) included initial purging by helium gas for 1 min followed by desorption at 100 °C for 2 min, and volatiles were stored in a temperature trap (-10 °C). Final desorption of the sample was done for 3 min with temperature programming upto 300 °C. In this system, the thermostated block of the TDS2, which contains a tube, formed the extraction unit. A capillary transfer line connected this block with the GC injector, which could be cooled with nitrogen to -10 °C and heated up to 300 °C. Helium flowed through the tube and the transfer line to the injector. For direct sample extraction, the leaf sample (25 mg) was introduced directly into the glass tube and heated. Carrier gas flow favored the stripping of volatiles, which were then trapped and collected on the cooled surface of the injector liner. Volatile compounds were transferred to the cooled injector in splitless mode. An external automatic controller regulated the numerous operating parameters of the extraction unit.

For the GC-MS analysis of the volatile compounds, a DB-5MS fused-silica capillary column with 30 m × 0.25 mm × 0.25 μm film thickness (Agilent) was used at a helium flow rate of 1.2 mL/min. The oven temperature was maintained at 40 °C for 1 min and then increased at 2 °C/min to 70 °C, kept at 70 °C for 5 min under flow-controlled conditions (constant flow 1.2 mL/min), which was followed by an increase at 15 °C/min to 250 °C. The MS interface temperature was set at 250 °C. The temperature of the ion source was 230 °C, electron energy was 70 eV, and quadrupole temperature was 150 °C. The chromatographic plot was obtained by total ion current (TIC) mode: the acquired mass ranges were 50–550 amu. To avoid the MS detection of CO₂, a solvent delay of 2 min was used. Compounds were identified by comparison with the Wiley 275 Mass Spectra Library (Wiley 2013).

Results

EFFECT OF BORDER CROPS AND INTERCROPS ON INSECT PEST INCIDENCE

Leafhopper *Amrasca biguttula biguttula*

During the monsoon season of 2010 and 2011, the leafhopper population was significantly smaller in all intercropped treatments (T1-T6) than in the sole crop control (T7). The treatment with coriander as intercrop and maize as border crop (T1) and that with marigold as intercrop and maize as border crop (T3) had the lowest leafhopper incidences from the 1st week of Aug to the 2nd week of Oct (from 32nd SMW to 41st SMW). The cumulative mean numbers of leafhoppers during the 10 week observation periods of 2010 and 2011 were smallest in T1 and T3 (6.90 and 7.27 insects per 3 leaves per plant, respectively), which

were followed by treatments: T2 < T5, < T4, < T6 < T7. Thus the sole crop control, T7, had the largest leafhopper population (12.61).

Whitefly *Bemisia tabaci*

The whitefly incidences during the monsoon seasons of 2010 and 2011, i.e., from the 1st week Aug to the 2nd week of Oct, were significantly lower in treatments T1, T2, T3 and T4 than in the sole crop T7 (control). The cumulative mean number of whiteflies during the 10 week observation periods revealed that the lowest whitefly population was recorded from T3 during the monsoon seasons of 2010 and 2011 (8.36 insects per 3 leaves per plant) (Table 1). The next best treatment was T1 (9.64 insects per 3 leaves per plant), followed by T4 < T2 < T5 < T6 < T7 (20.17 insects per 3 leaves per plant).

Fruit and Shoot Borer *Leucinodes orbonalis*

The lowest mean percentage fruit infestation during monsoon seasons of 2010 and 2011 by fruit weight (27.81) and fruit number (27.72) was recorded in treatment T1 having coriander as an intercrop and maize as border crop (Table 2). The next best treatments, based on weight and number of infested fruit, were T3 (29.12 and 29.20) and T2 (29.89 and 30.01). All the polyculture treatments (T1 to T6) were superior to the sole crop control (T7), with the latter showing highest percentage fruit infestation by weight and number (38.13 and 37.73, respectively) during the monsoon seasons of 2010 and 2011. Among the 3 intercrops, coriander and marigold were superior to mint in reducing the percentage fruit infestation and achieved the highest percentage reduction in infestation when compared with the sole crop control in both years. The highest mean percentage increase in yield during both years, based on fruit numbers and weight, when compared with the sole crop control, was recorded in treatment T1 (coriander and maize) with percent increases of 85.23 by number and 60.59 by weight.

EFFECT OF BORDER CROPS AND INTERCROPS ON INCIDENCE OF NATURAL ENEMY (COCCINELLIDS)

From the 1st week Aug to the 2nd week of Oct, treatment T1 (maize as border crop and coriander as intercrop) harbored significantly higher numbers of coccinellids than T7 (sole crop) during 2010 and 2011 (Table 1). The mean numbers of coccinellids during the 10 week observation period revealed that the largest population was recorded in T1 (1.25 coccinellids per plant) followed by T3 (1.00) > T5 (0.78) > T2 (0.67) > T4 (0.61) > T6 (0.55) > T7 (0.37). Thus, the smallest coccinellid population was recorded in the sole crop control.

The treatments with maize as border crop had more natural enemies than those with cowpea as border crop (Table 3, Table 4). Maize as a border crop attracted many unique natural enemies like *Paederus* sp. (Coleoptera: Staphylinidae), *Chrysoperla zastrowi* (Esben-Petersen) (Neuroptera: Chrysopidae), *Eristalis* sp. (Diptera: Syrphidae) and *Brachymeria* sp. (Hymenoptera: Chalcididae), apart from *Cheilomenes sexmaculata* (F.) (Coleoptera: Coccinellidae) and other ladybird beetles.

The Shannon-Wiener index for natural enemies present in different treatments varied from 2.356 to 1.171 and 2.462 to 1.241 in the years 2010 and 2011, respectively (Table 4). The highest index was recorded in treatment T1 followed by T3 > T5 > T2 > T4 > T6 during both years. Thus, coriander as intercrop and maize as border crop with eggplant had the highest diversity index. The lowest index was obtained in the sole crop control; all of the intercropped treatments had a higher index than the sole crop control.

Table 1. Effect of intercrops and border crops on incidences of the leaf hopper, *A. bigutula biguttula*, the whitefly, *B. tabaci* and the coccinellid predators on eggplant (brinjal) during *kharif* (monsoon season) of 2010 and 2011.

| Treatments | Mean insect population per 3 leaves per plant for 10 weeks ^a | | Mean insect population per plant for 10 weeks ^a |
|---------------|---|------------------------------|--|
| | <i>A. bigutula biguttula</i> | <i>B. tabaci</i> | Coccinellid predators |
| T1 | 6.90 (2.72) ^a | 9.64 (3.18) ^b | 1.25 (1.32) ^a |
| T2 | 8.16 (2.94) ^b | 12.41 (3.59) ^d | 0.67 (1.08) ^d |
| T3 | 7.27 (2.78) ^a | 8.36 (2.98) ^a | 1.00 (1.22) ^b |
| T4 | 9.36 (3.14) ^c | 10.70 (3.35) ^c | 0.61 (1.05) ^{d,e} |
| T5 | 8.68 (3.03) ^b | 13.83 (3.78) ^e | 0.78 (1.13) ^c |
| T6 | 10.13 (3.26) ^d | 15.45 (3.99) ^f | 0.55 (1.02) ^e |
| T7 | 12.61 (3.62) ^e | 20.17 (4.54) ^e | 0.37 (0.93) ^f |
| S.E. (±) | 0.05 | 0.08 | 0.02 |
| CV | 2.78 | 3.74 | 3.26 |
| CD (p < 0.05) | 0.10 | 0.16 | 0.04 |

^aFigures in parenthesis are square root transformed. In a column means followed by same letter are not significantly different from each other ($P > 0.05$). The treatments with intercrop and border crop, respectively, were as follows: T1, coriander and maize; T2, coriander and cowpea; T3, marigold and maize; T4, marigold and cowpea; T5, mint and maize; T6, mint and cowpea; and T7 (sole crop: control), without any intercrop or border crop.

PLANT VOLATILES PRESENT IN THE INTERCROPS

The presence of different hydrocarbons at varying levels was observed in intercrops. About 21 volatile compounds were present in coriander, 7 in marigold, and 18 in mint (Table 5 and Fig. 1, 2 and 3). The current state of knowledge of the behavioral effects (repellency, attractancy, no effect) of each chemical with respect the various herbivorous insects and natural enemies is summarized in Table 5. Some the volatiles emitted by coriander and mint are known to be repellent to certain herbivorous insects and others are known to be attractive to certain natural enemies. Very little is known about the behavioral effect of individual chemical constituents of the volatiles emitted by marigold. These data provide specific information that must be taken into account when conducting quantitative studies on how different pest and beneficial insects respond to plant volatiles in polycultures.

Discussion

Pest outbreaks are rare in polycultures due to the ability of the diverse plant culture to self-sustain through natural pest control by increasing the occurrence of natural enemies (Altieri 1994; Scherr & McNeely 2008). The cumulative mean leafhopper population of 2010 and 2011 was smallest in treatments T1 and T3, followed by T2, T5, T4, T6, and T7. In other words, eggplant with maize as border crop (T1 & T3) and coriander as intercrop (T1) or marigold as intercrop (T3) had the lowest leafhopper incidence. All those treatments having maize as border crop (T1, T3 & T5) recorded lesser leafhopper population than cowpea as border crop (T2, T4 & T6). Maize likely acted as a barrier crop for the movement of leafhoppers, as maize plants were much taller than the main crop and when planted in the border, maize is known to act as barrier crop (Root 1973; Fereres 2000; Elanchezhyan et al. 2008). Insect movements in and out of the system are affected by the permeability of the vegetation. In and out migration patterns of insects in polycultures have been studied by Bach (1984), Risch (1981) and Wetzler & Risch (1984). Similarly leafhopper populations in pigeonpea were reduced by sorghum intercropping (Sekhar et al. 1997).

During the present investigation it was noticed that maize harbored large numbers of coccinellids and syrphids, which might have helped to reduce the leafhopper nymphs on eggplant in those treatments. The border crop and intercrop change the microclimate of the main crop, which in turn hinders insect pest development and favors natural enemy proliferation by providing supplementary food and refugia (Staver et al. 2001). Moreover, the volatiles from coriander and marigold likely acted to repel leafhoppers, resulting in smaller populations in T1 and T3 compared with the sole crop control, T7. Insect pests have difficulty in locating their host plants due to presence of intercrops and border crops that emit volatiles that have either masking effects or repellency (Goel & Tiwari 2004; Gupta & Chourasia 2004). The 3 intercrops (coriander, marigold and mint) are odoriferous in nature. The odoriferous plants, when raised with host plants of insect pests, can deter recognition, feeding and reproduction of the pests on their host plants (De-thier et al. 1960; Schoonhoven 1968).

The whitefly population was smallest in treatment T3 followed by T1, T4, T2, T5, T6, and T7. The results indicated that maize as border crop and marigold as an intercrop effectively reduced the whitefly population in eggplant. The volatiles from marigold have repellent action against whiteflies (Zavaleta-Mejía & Gomes 1995), explaining why treatments T3 and T4 had small whitefly populations. Coriander was the second best intercrop in reducing whitefly populations. Maize was a very good barrier crop against whitefly colonization and migration. Hence, the treatments having maize as border crop (T3, T1, and T5) had smaller whitefly populations than the other treatments and sole crop control, T7. Marigold intercropping in tomato reduced whitefly and nematode populations (Abid & Magbool 1990; Zavaleta-Mejía & Gomes 1995). Similarly, *Trialeurodes vaporariorum* (Westwood) (Homiptera: Aleyrodidae) was repelled by *Tagetes* spp. (Asterales: Asteraceae) (Endersby & Morgan 1991). This bottom-up effect of marigold intercropping was accompanied by a top-down effect, as the marigold increased longevity and fecundity of natural enemies by providing nectar and pollen (Baggen 1999). Next to marigold, coriander supported the smallest whitefly populations in our study. Under greenhouse conditions, planting melon (*Cucumis melo* L.) or watermelon (*Citrullus la-*

Table 2. Effect of intercrops and border crops on infestation of eggplant by the fruit and shoot borer *L. orbonalis* during the 2010 and 2011 monsoon season.

| Treatment | Total fruit yield per hectare | | Marketable fruit yield per hectare | | Damaged fruit yield per hectare | | Fruit infestation (%) ^b | | Reduction in infestation over control (%) ^c | | Increase in yield over control (%) ^c | |
|-------------|-------------------------------|-------------------------|------------------------------------|----------------------|---------------------------------|---------------------|------------------------------------|--------------------|--|-----------|---|-----------|
| | Number (' 10 ³) | Weight (t) | Number (' 10 ³) | Weight (t) | Number (' 10 ³) | Weight (t) | By number | By weight | By number | By weight | By number | By weight |
| T1 | 206.67 ^a | 15.095 ^a | 162.13 ^a | 11.809 ^a | 44.53 ^{ab} | 3.286 ^{ab} | 27.72 ^a | 27.81 ^a | 26.25 | 27.07 | 85.23 | 60.59 |
| T2 | 182.33 ^{ab} | 14.177 ^{ab,bc} | 136.93 ^b | 10.663 ^{ab} | 45.40 ^{ab} | 3.514 ^{ab} | 30.01 ^{bc} | 29.89 ^c | 20.24 | 21.61 | 56.44 | 44.99 |
| T3 | 156.67 ^{bc} | 11.606 ^c | 119.27 ^b | 8.850 ^{bc} | 37.40 ^a | 2.756 ^a | 29.20 ^b | 29.12 ^b | 22.37 | 23.63 | 36.26 | 20.35 |
| T4 | 183.80 ^{ab} | 13.497 ^{ab,bc} | 135.00 ^b | 9.909 ^{ab} | 48.80 ^b | 3.588 ^{ab} | 31.05 ^c | 31.05 ^d | 17.53 | 18.58 | 54.23 | 34.74 |
| T5 | 182.13 ^{ab} | 13.261 ^{ab,bc} | 129.13 ^b | 9.426 ^b | 53.00 ^b | 3.834 ^{bc} | 32.65 ^d | 32.54 ^e | 13.32 | 14.66 | 47.53 | 28.18 |
| T6 | 202.20 ^a | 14.573 ^{ab} | 139.00 ^b | 9.923 ^{ab} | 63.20 ^c | 4.650 ^d | 34.11 ^e | 34.41 ^f | 9.49 | 9.76 | 58.80 | 34.94 |
| T7 | 139.73 ^c | 11.865 ^{bc} | 87.53 ^c | 7.354 ^c | 52.20 ^c | 4.512 ^{cd} | 37.73 ^f | 38.13 ^g | n/a | n/a | n/a | n/a |
| SEM | 5.09 | 0.48 | 4.43 | 0.38 | 1.49 | 0.16 | 0.52 | 0.52 | n/a | n/a | n/a | n/a |
| CV | 12.64 | 15.72 | 13.08 | 15.36 | 13.20 | 17.48 | 3.13 | 1.93 | n/a | n/a | n/a | n/a |
| CD (P<0.05) | 26.69 | 2.49 | 20.04 | 1.76 | 7.66 | 0.77 | 1.17 | 0.73 | n/a | n/a | n/a | n/a |

^aIn a column, means followed by the same letter are not significantly different from each other ($P > 0.05$).

^bFigures in parentheses are arcsine transformed.

^cn/a = not applicable. The treatments with intercrop and border crop, respectively, were as follows: T1, coriander and maize; T2, coriander and cowpea; T3, marigold and maize; T4, marigold and cowpea; T5, mint and maize; T6, mint and cowpea; and T7 (sole crop: control), without any intercrop or border crop.

natus [Thunb.] Matsumara & Nakai) (Cucurbitales: Cucurbitaceae) with coriander reduced infestation by *B. tabaci* (Costa & Bleicher 2006). Similarly, Hilje & Stansly (2008) reported that *B. tabaci* abundance and begomovirus incidence were low on tomato intercropped with coriander. Our treatments using maize as border crop (T1, T3, and T5) had the smallest whitefly populations. Maize as barrier crop in beans reduced the *B. tabaci* population below economic threshold levels in Guatemala (Smith & McSorley 2000; Smith et al. 2000). Similarly, the whiteflies *Aleurotrachelis socialis* Bondar and *Trialeurodes variabilis* (Quaintance) (Hemiptera: Aleyrodidae) on cassava, *Manihot esculenta* Crantz (Malpighiales: Euphorbiaceae), were less abundant when cassava was intercropped with maize (Gold et al. 1990).

The presence of non-host plants might have repelled the adult moths resulting in less fruit infestation in polyculture treatments (T1 to T6) than in the sole crop control (T7). The repellency to different lepidopterous pests of various non-host crops was reported by Khan et al. (2000), McNair et al. (2000) and Liu et al. (2005). The results clearly revealed that maize acted as an effective barrier for the movement of adult fruit borer moths, thereby reducing the percentage fruit infestation in treatments T1 and T3. Non-host plants mixed in with host plants either act as a mechanical barrier to the dispersal of the insect pest (Kennedy et al. 1959; Root 1973) or physically repel them because of unpleasant morphological features such as hairy leaves (Levin 1973). Similarly, Nwilene et al. (2011) reported that intercropping maize and cassava with NERICA rice varieties had reduced stem borer attack on rice. They also concluded that cassava acted as refugia for generalist predators against stem borer. Coriander and marigold as intercrop resulted in lowering the numbers of sucking and borer pests than mint as intercrop and the sole crop control. Intercropping coriander with eggplant reduced *L. orbonalis* infestation and the amount of insecticide used by farmers (Khorsheduzzaman et al. 1997), and intercropping marigold with cabbage reduced oviposition by *Pieris brassicae* L. and larval incidence of *Pieris rapae* L. (Lepidoptera: Pieridae) on cabbage (Koehler et al. 1983; Metspalu et al. 2003). *L. orbonalis* orientation and oviposition on eggplant was reduced when it was planted along with coriander or fennel (Satpathy & Misra 2011). In the present study, the highest percentage increase in yield (based on numbers of uninfested fruit) compared with the sole crop control was recorded from treatment T1 during both years, and this result agrees with that of Hasheela et al. (2010).

High diversity in predatory insect and parasitoid species was recorded from treatments T1, T3, and T5 wherein maize supplied pollen and nectar as supplementary feed to the natural enemies (Bianchi et al. 2006). The ample availability of pollen and nectar from the tassel and silk of maize crop attracted many natural enemies. Apart from this, maize also offers honeydew produced by *Rhopalosiphum maidis* (Fitch) (Hemiptera: Aphididae) which attracts aphidophagous predators and parasitoids. This supplementary food resource increases the parasitoid fecundity, longevity (Tyljanakis et al. 2004) and also favors rapid colonization of generalist predators (Symondson et al. 2002). The dense vegetation created by the presence of eggplant with intercrop and border crop had led to rapid colonization and occurrence of natural enemies in higher densities. This is in accordance with reports of Sprengel et al. (1979); Horn (1981). Similarly, Letourneau & Altieri (1983) and Letourneau (1990) also suggested that predator colonization rates could be manipulated through vegetational diversification of the crop habitat.

Natural enemies harbored by maize consist primarily of ants, spiders, rove beetles, predaceous mites, and ground beetles (Rose & Dively 2007). Similar report of intercrops increasing natural enemy diversity is reported by Singh et al. (1991a). They found that sorghum as an intercrop significantly increased the natural enemies like *Laius mallifer*, *C. septumpunctata*, *Orius* sp. and *C. sexmaculata* which had controlled

Table 3. List of natural enemies recorded in various treatments with intercrops and border crops to determine infestation levels of eggplant pests.

| No. | Order | Family | Common name | Species | Present in treatments ^a | |
|-----|-------------|---------------|-----------------|---|------------------------------------|------------------------|
| | | | | | 2010 | 2011 |
| 1 | Coleoptera | Coccinellidae | Ladybird beetle | <i>Adonia variegata</i> (Goeze) | T1,T3 | T1,T3 |
| 2 | Coleoptera | Coccinellidae | Ladybird beetle | <i>Coccinella septempunctata</i> L. | T1,T2,T3,T4,T5,T6,T7 | T1,T2,T3,T4,T5,T6,T7 |
| 3 | Coleoptera | Coccinellidae | Ladybird beetle | <i>Coccinella transversalis</i> F. | T1,T3,T5 | T1,T3,T5 |
| 4 | Coleoptera | Coccinellidae | Ladybird beetle | <i>Cheilomenes sexmaculata</i> (F.) | T1,T2,T3,T4,T5,T6,T7 | T1,T2,T3,T4,T5,T6,T7 |
| 5 | Coleoptera | Coccinellidae | Ladybird beetle | <i>Micraspis allardi</i> (Mulsant) | T1,T3,T5 | T1,T3,T5 |
| 6 | Coleoptera | Coccinellidae | Ladybird beetle | <i>Micraspis discolor</i> (F.) | T1,T3 | T1,T3 |
| 7 | Coleoptera | Coccinellidae | Ladybird beetle | <i>Propylea dissecta</i> (Mulsant) | T1,T3 | T1,T3 |
| 8 | Coleoptera | Staphylinidae | Rove beetle | <i>Paederus</i> sp. | T1,T3,T5 | T1,T3,T5 |
| 9 | Neuroptera | Chrysopidae | Green lacewing | <i>Chrysoperla zastrowi</i> (Esben-Petersen) | T1,T3,T5 | T1,T3,T5 |
| 10 | Hemiptera | Lygaeidae | Bigeyed bug | <i>Geocoris tricolor</i> F. | T1, T2,T3, T4,T5,T6,T7 | T1, T2,T3, T4,T5,T6,T7 |
| 11 | Diptera | Syrphidae | Hoverfly | <i>Eristalis</i> sp. | T1,T3,T5 | T1,T3,T5 |
| 12 | Hymenoptera | Chalcididae | Chalcidid wasp | <i>Brachymeria</i> sp. | T1,T3,T5 | T1,T3,T5 |
| 13 | | Sphecidae | Mud dauber | <i>Sceliphron madraspatanum pictum</i> (F. Smith) | T2,T4,T6 | T2,T4,T6 |
| 14 | | Vespidae | Paper wasp | <i>Ropaldia</i> sp. | T2,T4,T6 | T2,T4,T6 |
| 15 | Odonata | — | Dragonfly | Genus undetermined | T1,T2,T3,T4,T5,T6 | T1,T2,T3,T4,T5,T6, |
| 16 | | — | Damselfly | Genus undetermined | T1,T2,T3,T4,T5,T6 | T1,T2,T3,T4,T5,T6, |
| 17 | Dictyoptera | Mantispidae | Praying mantis | Genus undetermined | T1,T3,T7 | T1,T3,T7 |

^aThe treatments with intercrop and border crop, respectively, were as follows: T1, coriander and maize; T2, coriander and cowpea; T3, marigold and maize; T4, marigold and cowpea; T5, mint and maize; T6, mint and cowpea; and T7 (sole crop: control), without any intercrop or border crop.

thrips infesting groundnut. Treatment T1 yielded the highest numbers of natural enemy individuals and species and the highest Shannon-Wiener index in 2010 and 2011. The present finding is in agreement with that of Amin et al. (2005), who reported that eggplant with coriander as intercrop had the highest diversity index during the early growth phase of eggplant. The present result is also in concurrence with the reports of Midega & Khan (2003). They concluded that habitat management for maize stem borers by using “push pull system” had increased the abundance of natural enemies like *Cheilomenes* sp., *Chrysopa* sp., ants earwigs and spiders concurrently with reducing target pest i.e. stem borers.

Push – pull strategy involves manipulation of insect and natural enemy behavior through the integration of stimuli that act to make the protected resource unattractive or unsuitable to the pests (push) while luring them toward an attractive source (pull) from where the pests are subsequently removed (Cook et al. 2007). The push-pull strategy was well established for cereal stem borer management in Africa, wherein the molasses grass, *Melinis minutiflora* P. Beauv. or silver leaf desmodium, *Desmodium uncinatum* (Jacq.) DC. or *D. intortum* is used as push component and napier (*Pennisetum purpureum* Schumach) or sudan grass (*Sorghum sudanense* Stapf) is used as pull component. The

adult moths were pushed from maize by the molasses grass or by *Desmodium* sp. simultaneously they were pulled by napier grass or sudan grass, as these 2 are preferred for oviposition by the adults (Khan et al. 2000, 2006). The pull components used here were putative trap crops (i.e., they would not support larval feeding) the stem borer population starts reducing by the use of this push–pull strategy. This strategy not only reduced cereal stem borers but also reduced the parasitic weed, *Striga hermonthica* (Del.) Benth. and thereby sustained the cereal production in sub Saharan Africa (Khan et al. 2010).

Coriander leaf volatile consists of carvyl acetate and carvone in the present investigation. Carvacrol from coriander leaf volatiles was reported to strongly deter oviposition by the cotton leafhopper, *Ammasca devastans* (Hemiptera: Cicadidae), and the volatiles suppressed the nymph arrival (Saxena & Basit 1982). The colonization and residence time of the leafhopper on a host plant were influenced by the presence of the nonhost plants. The airborne volatiles of *Melinis minutiflora* P. Beauv. (Poales: Poaceae) a non host plant of spotted maize stem borer had repelled it from ovipositing on maize. This is due to the presence of the plant volatiles ocimene and nonatriene from the intercrop (Kimani et al. 2000). Farnesene present in the coriander leaves is an aphid alarm pheromone and thus helps in repelling aphids and acts as

Table 4. Predatory insect diversity in various treatments with intercrops and border crops to determine infestation levels of eggplant pests.

| Treatment | Number of species | | Number of individuals | | Shannon-Wiener index ^a | |
|-----------|-------------------|------|-----------------------|------|-----------------------------------|-------|
| | 2010 | 2011 | 2010 | 2011 | 2010 | 2011 |
| T1 | 15 | 15 | 66 | 88 | 2.356 | 2.462 |
| T2 | 7 | 7 | 38 | 50 | 1.554 | 1.709 |
| T3 | 15 | 15 | 52 | 72 | 2.333 | 2.391 |
| T4 | 7 | 7 | 25 | 39 | 1.538 | 1.707 |
| T5 | 11 | 11 | 35 | 45 | 2.040 | 2.001 |
| T6 | 7 | 7 | 23 | 33 | 1.518 | 1.664 |
| T7 | 4 | 4 | 18 | 23 | 1.171 | 1.241 |

The treatments with intercrop and border crop, respectively, were as follows: T1, coriander and maize; T2, coriander and cowpea; T3, marigold and maize; T4, marigold and cowpea; T5, mint and maize; T6, mint and cowpea; and T7 (sole crop: control), without any intercrop or border crop.

^aNote: A value near zero indicates that the treatment was dominated by a single species, and a value near 4.5 indicates that the number of individuals was distributed evenly overall the species.

Table 5. Constituent volatiles present in leaves of coriander, marigold and mint.

| Crop | Retention time | Compound | Insect name: Repellent (R) /Attractant (A)/Neither (N) | Reference |
|-----------|----------------|-------------------------|--|--|
| Coriander | 6.834 | α -Pinene | <i>Rhynchophorus ferrugineus</i> : (R) <i>Phthorimaea operculella</i> : (R) | Guarino et al. 2013 Sharaby et al. 2009 |
| | 7.200 | Camphene | <i>Phthorimaea operculella</i> : (R) | Sharaby et al. 2009 |
| | 7.452 | β -Phellandrene | <i>Phthorimaea operculella</i> : (R) | Sharaby et al. 2009 |
| | 7.721 | β -Pinene | Aphid (R) alarm pheromone | Pickett & Griffiths 1980 |
| | 7.990 | Carvyl acetate | Lice (R) | Eini & Tamarkin 1993 |
| | 8.344 | Thymene | N | |
| | 8.430 | Limonene | <i>Empoasca vitis</i> : (R) <i>Harmonia axyridis</i> : (A) | Zhang et al. 2014 Alhmedi et al. 2010 |
| | 8.545 | p-Cymene | <i>Empoasca vitis</i> : (R) | Zhang et al. 2014 |
| | 8.739 | Ocimene | <i>Helicoverpa armigera</i> : (A) | Bruce & Cork 2001 |
| | 8.957 | Terpinene | N | |
| | 9.786 | Nonanal | <i>Paragus quadrifasciatus</i> and <i>Orius similis</i> : (A) | Yu et al. 2008 |
| | 11.572 | Dihydrocarvone | <i>Sitophilus oryzae</i> contact toxicity | Tripathi et al. 2003 |
| | 11.692 | Decanal | N | |
| | 12.493 | Carvone | <i>Sitophilus oryzae</i> contact toxicity | Tripathi et al. 2003 |
| | 12.796 | Decenal | N | |
| | 14.524 | Undecenal | N | |
| | 15.594 | β -Caryophyllene | <i>Harmonia axyridis</i> : (A) | Alhmedi et al. 2010 |
| | 15.989 | Cadinene | N | |
| | 16.069 | Farnesene | Whiteflies toxic | Klinjstra et al. 1992 |
| | 16.161 | α -Caryophyllene | <i>Chrysopa carnea</i> (A) | Flint et al. 1979 |
| 16.246 | 3-Dodecenal | N | | |
| Marigold | 5.508 | Allylisothiocyanate | N | |
| | 6.126 | Butane-4-isothiocyanate | N | |
| | 8.380 | Cinamaldehyde | N | |
| | 8.529 | Phenol, m-tert-butyl- | N | |
| | 8.735 | Chrysanthenone | N | |
| | 8.947 | Piperitenone | <i>Helicoverpa armigera</i> : (A) | Bruce & Cork 2001 |
| | 9.113 | Piperitenone oxide | N | |
| | | | | |
| Mint | 7.700 | β -Pinene | Aphid (R) alarm pheromone | Pickett & Griffiths 1980 |
| | 7.974 | Carvyl acetate | Lice (R) | Eini & Tamarkin 1993 |
| | 8.180 | α -Terpinene | <i>Manduca sexta</i> : (A) | Fraser et al. 2003 |
| | 8.335 | p-Cymene | N | |
| | 8.426 | Limonene | <i>Empoasca vitis</i> : (R) <i>Harmonia axyridis</i> : (A) | Zhang et al. 2014 Alhmedi et al. 2010 |
| | 8.730 | β -Ocimene | <i>Helicoverpa armigera</i> : (A) | Bruce & Cork 2001 |
| | 9.107 | g-Terpinene | N | |
| | 9.531 | Dimethylstyrene | N | |
| | 9.788 | Nonanal | <i>Paragus quadrifasciatus</i> and <i>Orius similis</i> : (A) | Yu et al. 2008 |
| | 10.143 | 2-Octene | N | |
| | 11.619 | Dihydrocarvone | <i>Sitophilus oryzae</i> contact toxicity | Tripathi et al. 2003 |
| | 12.552 | Carvol | N | |
| | 12.712 | Piperitone | <i>Stomoxys calcitrans</i> (R) | Hieu et al. 2014 |
| | 13.359 | Carvacrol | <i>Phthorimaea operculella</i> : (R) | Sharaby et al. 2009 |
| | 13.902 | Dihydrocarvyl acetate | N | |
| | 15.590 | β -Caryophyllene | <i>Harmonia axyridis</i> : (A) <i>Phthorimaea operculella</i> : (A) | Alhmedi et al. 2010 Sharaby et al. 2009 |
| | 16.065 | β -Farnesene | <i>Episyrrhus balteatus</i> : (A) | Alhmedi et al. 2010 |
| | 16.157 | α -Caryophyllene | <i>Chrysopa carnea</i> : (A) | Flint et al. 1979 |

a kairomone for carabid beetles (Keilty et al. 1996). Similarly, whiteflies are known to avoid plant species that contain aromatic oils such as ginger oil. Hence, aromatic plants like coriander and marigold might have repelled the whitefly from the eggplant (Zhang et al. 2004). Repellent and antifeedant properties of mint against agricultural pests were reported by Koschier et al. (2002), Odeyemi et al. (2008), and Kumar et al. (2009). Similarly, Rattan (2010) reported that mint volatiles blocked the chemosensory receptor cells of lepidopteran larvae. Hence in the present study the intercrops (coriander, marigold and mint) repelled

the leafhoppers, whitefly and eggplant fruit borers significantly. This is evident from the sucking pest population and fruit damage in control (T7).

These inter crops can be employed as a “push factor” in line with the well established push-pull management strategy employed in cereal stem borers in Africa (Khan et al. 2000, 2006). The border crop maize and cowpea acted as refugia for generalist natural enemies and these also helped in further reducing the pest populations in eggplant. Beyond this, maize also acted as a barrier to fruit borer and sucking

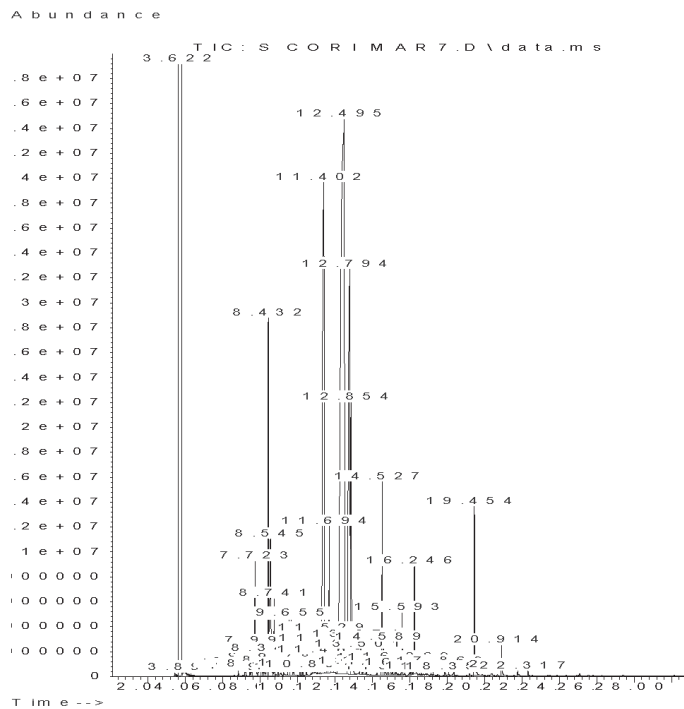


Fig. 1. Total ion current (TIC) mode chromatographic plot of coriander leaf volatiles sampled and analyzed by the thermal desorption (TD) technique.

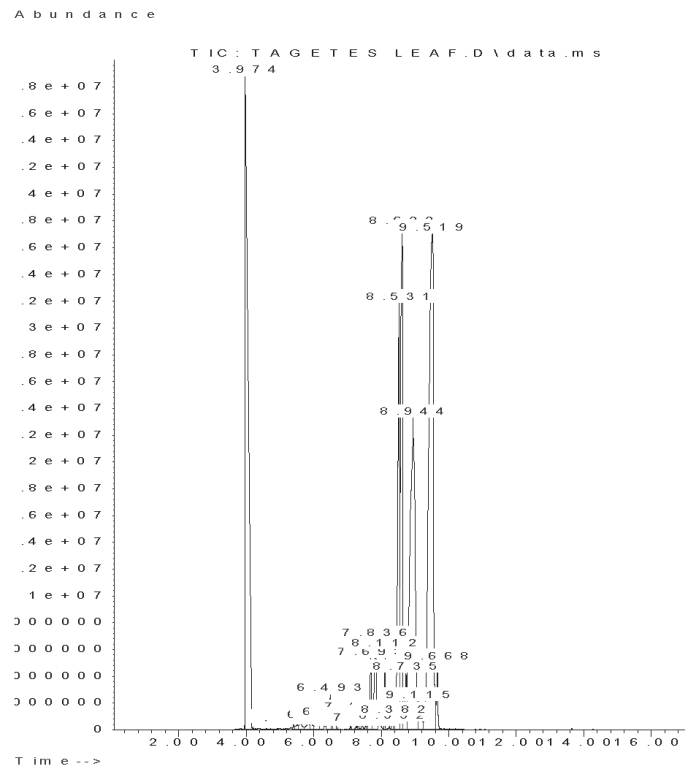


Fig. 2. Total ion current (TIC) mode chromatographic plot of marigold leaf volatiles sampled using the thermal desorption (TD) technique.

pest of eggplant, thereby preventing the pest colonization in eggplant. Hence this system can be called as “push & prevent” strategy for managing the eggplant insect pest. Cook et al. (2007) has listed various cues that affect insects’ long range and short range stimuli during the host searching process. The presence of non host volatiles and visual cues have under long range action, while ovipositional deterrents and antifeedancy serve as short range cues. In the present investigation the presence of non host volatiles from coriander, marigold and mint might have either repelled or confused the pest of eggplant, ultimately resulting in smaller pest population in the polyculture treatments. The latter case of confusion is attributed to the odor masking effect of the volatiles produced from intercrops. Similar report of non host volatiles of angiosperms resulted in reduction of colonization of bark beetles in conifers (Zhang & Schlyter 2004).

In a crop diversification system like coriander or marigold or mint with eggplant will result in poor quality or dilution of eggplant volatiles. This diluted or mixed odor may signal as poor quality host to the insect pest leading to repellent behavior. In polyculture, the odors released by some plants may mask the effect of those released by other plants. The codling moth (*Cydia pomonella*) was repelled by the odors of apple at inappropriate phenological stages Vallat & Dorn (2005). Under these circumstances, the insects find it difficult to locate the hosts on which to feed and reproduce (Altieri 1986).

In summary, the treatments (T1 to T6) recorded significantly reduced leafhopper, whitefly, and fruit borer populations compared with the sole crop control (T7) in eggplant during the years 2010 and 2011. Treatment T1, using coriander as an intercrop and maize as a border crop with eggplant, had the lowest mean number of leafhoppers (*A. biguttula biguttula*) per 3 leaves per plant (6.90). Treatment T1 also had the lowest percentage fruit infestation by *L. orbonalis* determined by number and weight of infested fruit (by number: 27.72%; by weight: 27.81%). The mean number of whiteflies (*B. tabaci*) per 3

leaves per plant on eggplant was lowest (8.36) in treatment T3, using marigold as intercrop and maize as border crop, followed by T1 (9.64). The highest number of coccinellids per plant on eggplant was recorded from treatment T1 (1.25), followed by T3 (1.00), T5 (0.78), T2 (0.67), T4 (0.61), and T6 (0.55). Maize as a border crop attracted many unique natural enemies like *Paederus* sp., *C. zastrowi*, *Eristalis* sp., and *Brachymeria* sp. in treatments T1, T3, and T5. In contrast, the sole crop control (T7) harbored only a few natural enemies. This was reflected in the higher Shannon-Wiener index recorded in the treatments T1, T3, and T5 compared with T7. We concluded that intercropping eggplant with either marigold or coriander coupled with border cropping with maize offers great potential for suppressing sucking pest and fruit borer pest populations besides conserving natural enemy populations. Thus the intercropping of coriander or marigold with eggplant and border cropping with maize can be used as “push & prevent” strategy for reducing the fruit and shoot borer and sucking pest especially jassids and whiteflies. This “push & prevent” management system will help in sustaining the ecosystem as well as productivity and profitability of farmers. Thus crop diversification in eggplant with intercrop and border crop will help in reducing the insecticidal application on fruit and thereby reducing environmental pollution in one hand simultaneously helping as a good strategy in insecticide resistance management. As crop diversification manipulates insect behavior, it is a sustainable solution for managing the insect herbivores of eggplant in an eco-friendly manner.

Acknowledgments

The authors acknowledge V.V. Ramamurthy and the staff at the National Pusa Collection for identification of predators and parasitoids. The study was supported financially by DST, INSPIRE program of GOI.

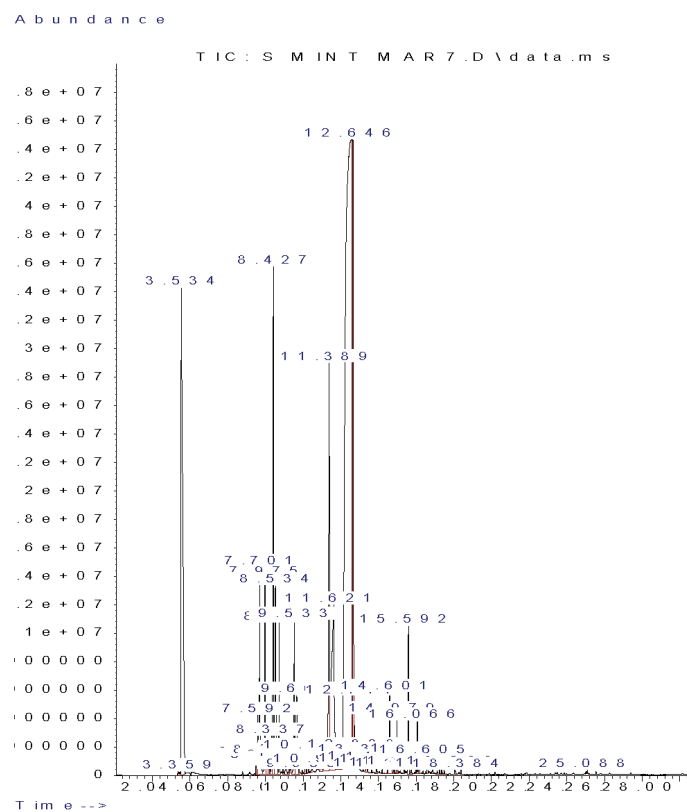


Fig. 3. Total ion current (TIC) mode chromatographic plot of mint leaf volatiles sampled using the thermal desorption (TD) technique.

References Cited

Abid M, Magbool MA. 1990. Effects of inter-cropping of *Tagetes erecta* on root-knot disease and growth of tomato. *International Nematology Network Newsletter* 7: 41-42.

Alam SN, Hossain MI, Rouf FMA, Jhala RC, Patel MG, Rath LK, Sengupta A, Baral K, Shylesha AN, Satpathy S, Shivalingaswamy TM, Cork A, Talekar NS. 2006. Implementation and promotion of an IPM strategy for control of eggplant fruit and shoot borer in South Asia. AVRDC – The World Vegetable Center, Shanhua, Taiwan, Technical Bulletin 36: 74.

Alam SN, Rashid MA, Rouf FMA, Jhala RC, Patel JR, Satpathy S, Shivalingaswamy TM, Rai S, Wahundeniya I, Cork, A, Ammaranan C, Talekar NS. 2003. Development of an Integrated Pest Management Strategy for Eggplant Fruit and Shoot Borer in South Asia. AVRDC – The World Vegetable Center, Shanhua, Taiwan. Technical Bulletin 28: 03–548.56pp.

Alhmedi A, Haubruge E, Francis F. 2010. Identification of limonene as a potential kairomone of the harlequin ladybird *Harmonia axyridis* (Coleoptera: Coccinellidae). *European Journal of Entomology* 107: 541-548

Ali MI. 1994. Circumstantial evidence supports insect resistance in Bangladesh. *Resistance Pest Management* 6: 15.

Altieri MA. 1994. *Biodiversity and Pest Management in Agroecosystems*. Food Products Press, New York, New York.

Altieri MA. 1986. *Agroecology: the scientific basis of alternative agriculture*. Colorado: Westview Press.

Andow DA. 1991. Vegetational diversity and arthropod population response. *Annual Review of Entomology* 36: 561-586.

Bach CE. 1984. Plant spatial pattern and herbivore population dynamics: plant factors affecting the movement patterns of a tropical cucurbit specialist (*Acalymma innubum*). *Ecology* 65: 175-190.

Baggen LR, Gurr GM, Meats A. 1999. Flowers in tri-trophic systems: mechanisms allowing selective exploitation by insect natural enemies for conservation biological control. *Entomologia Experimentalis et Applicata* 91: 155-161.

Bernays EA, Chapman RF. 1994. *Host-plant selection by phytophagous insects*. Chapman and Hall, New York, New York.

Bhadoria NKS, Bhadoria NS, Jakhmola SS. 1999. Insect pests complex of brinjal, *Solanum melongena* L. in north west Madhya Pradesh. *Advances in Plant Sciences* 12(2): 607-608.

Bianchi FJJA, Booij CJH, Tscharntke T. 2006. Sustainable pest regulation in agricultural landscapes: a review on landscape composition, biodiversity and natural pest control. *Proceedings of the Royal Society B* 273: 1715-1727.

Botre BS, Salunke PB, Munje SS, Barkhade UP. 2014. Monitoring insecticide resistance in *Leucinodes orbonalis* (Guen). *Bioinfolet* 11(2): 521-523.

Bruce TJ, Cork A. 2001. Electrophysiological and behavioral responses of female *Helicoverpa armigera* to compounds identified in flowers of African marigold, *Tagetes erecta*. *Journal of Chemical Ecology* 27(6): 1119-1131.

Cook SM, Khan ZR, Pickett JA. 2007. The use of 'push-pull' strategies in integrated pest management. *Annual Review of Entomology* 52: 375-400.

Costa RS, Bleicher E. 2006. Comportamento da mosca-branca (*Bemisia tabaci* biótipo B) em sistemas de plantio de coentro, melancia e melão. *Revista Ciência Agrônômica* 37: 195-199.

Dethier VG, Barton-Brown L, Smith CN. 1960. The designation of chemicals in terms of the responses they elicit from insects. *Journal of Economic Entomology* 53: 134-136.

Eini M, Tamarkin D. 1993. Lice-repellant compositions. U.S. Patent 5,227,163 filed June 19, 1992, and issued July 13, 1993.

Endersby NM, Morgan WC. 1991. Alternatives to synthetic chemical insecticides for use in crucifer crops. *Biological Agriculture and Horticulture* 8: 33-52.

FAO. 2014. FAOSTAT data 2014. <http://www.fao.org>

Fereres A. 2000. Barrier crops as a cultural control measure of non-persistently transmitted aphid-borne viruses. *Virus Research* 71: 221-231.

Flint HM, Salter SS, Walters S. 1979. Caryophyllene: an attractant for the Green Lacewing. *Environmental Entomology* 8(6): 1123-1125.

Fraser AM, Mechaber WL, Hildebrand JG. 2003. Electroantennographic and behavioral responses of the sphinx moth *Manduca sexta* to host plant head-space volatiles. *Journal of Chemical Ecology* 29: 1813-1833.

Goel R, Tiwari M. 2004. Effect of intercropping on the incidence of *Lipaphis-erysimi* in mustard. *Annals of Plant Protection Sciences* 12(2): 435-436.

Gold CS, Altieri MA, Ellotti ACB. 1990. Direct and residual effects of short duration intercrops on the cassava whiteflies *Aleurotrachelus socialis* and *Trialeurodes variabilis* in Colombia. *Agriculture, Ecosystems and Environment* 32: 57-68.

Guarino S, Peri E, Bue PL, Germanà MP, Colazza S, Anshelevich L, Ravid U, Soroker V. 2013. Assessment of synthetic chemicals for disruption of *Rhynchophorus ferrugineus* response to attractant-baited traps in an urban environment. *Phytoparasitica* 41: 79-88.

Gupta MP, Chourasia SK. 2004. Effect of intercropping systems on the incidence of *Antigastra catalunalis* Duponchel in sesame. *Indian Journal of Ecology* 31(1): 64-65.

Hasheela EBS, Nderitu JH, Olubayo FM, Kasina M. 2010. Evaluation of border crops against infestation and damage of cabbage by diamondback moth (*Plutella xylostella*). *Tunisian Journal of Plant Protection* 5: 99-105.

Hieu TT, Jung JW, Kim S, Ahna YJ, Kwona HW. 2014. Behavioural and electroantennogram responses of the stable fly (*Stomoxys calcitrans* L.) to plant essential oils and their mixtures with attractants. *Pest Management Science* 70: 163-172.

Hilje L, Stansly PA. 2008. Living ground covers for management of *Bemisia tabaci* (Gennadius) (Homoptera: Aleyrodidae) and tomato yellow mottle virus in Costa Rica. *Crop Protection* 27: 10-16.

Hokkanen HMT. 1991. Trap cropping in pest management. *Annual Review of Entomology* 36: 119-138

Horn DJ. 1981. Effect of weedy backgrounds on colonization of collards by green peach aphid, *Myzus persicae*, and its major predators. *Environmental Entomology* 10: 285-289.

Kennedy JS, Booth CO, Kershaw WJS. 1959. Host finding by aphids in the field: 1. Gynoparae of *Myzus persicae* (Sulzer). *Annals of Applied Biology* 47: 410-423.

Khan ZR, Midega CAO, Hutter NJ, Wilkins RM, Wadhams LJ. 2006. Assessment of the potential of Napier grass (*Pennisetum purpureum*) varieties as trap plants for management of *Chilo partellus*. *Entomologia Experimentalis et Applicata* 119: 15-22.

Khan ZR, Midega CAO, Bruce TJA, Hooper AM, Pickett JA. 2010. Exploiting phytochemicals for developing a 'push-pull' crop protection strategy for cereal farmers in Africa. *Journal of Experimental Botany* 61(15): 4185-4196.

Khan ZR, Pickett JA, Van Den Berg J, Wadhams LJ, Woodcock CM. 2000. Exploiting chemical ecology and species diversity: stem borer and striga control for maize and sorghum in Africa. *Pest Management Science* 56: 957-962.

Khorsheduzzaman AKM, Ali MI, Mannan MA, Ahmed A. 1997. Brinjal-coriander intercropping: An effective IPM component against brinjal shoot and fruit

- borer, *Leucinodes orbonalis* Guen. (Pyralidae: Lepidoptera). Bangladesh Journal of Entomology 7(1/2): 85-91.
- Kieley JP, Allen-Williams LJ, Underwood N, Eastwood EA. 1996. Behavioral responses of three species of ground beetle (Coleoptera: Carabidae) to olfactory cues associated with prey and habitat. Journal of Insect Behavior 9: 237-250.
- Kimani SM, Chhabra SC, Lwande W, Khan ZR, Hassanali A, Pickett JA. 2000. Airborne volatiles from *Melinis minutiflora* P. Beauv., a non-host plant of the spotted stem borer. Journal of Essential Oil Research 12: 221-224.
- Klijnstra KW, Corts KA, Van Oosten AM. 1992. Toxic effects of farnesene on adult whiteflies. Med. Fac. Landbouww. Rijksuniv. Gent 57(2b): 485-491.
- Koehler ICS, Barclay LW, Kretchun TM. 1983. Companion plants. California Agriculture 37(9): 14-15.
- Koschier EH, Sedy KA, Novak J. 2002. Influence of plant volatiles on feeding damage caused by the onion thrips *Thrips tabaci*. Crop Protection 21: 419-425.
- Kumar A, Shukla R, Singh P, Singh AK, Dubey NK. 2009. Use of essential oil from *Mentha arvensis* L. to control storage moulds and insects in stored chickpea. Journal of the Science of Food and Agriculture 89: 2643-2649.
- Landis DA, Wratten SD, Gurr GM. 2000. Habitat management to conserve natural enemies of arthropod pests in agriculture. Annual Review of Entomology 45: 175-201.
- Letourneau DK, Altieri MA. 1983. Abundance patterns of a predator, *Orius tristicolor* (Hemiptera Anthrocoridae), and its prey, *Frankliniella occidentalis* (Thysanoptera: Thripidae): habitat attraction in polycultures versus monocultures. Environmental Entomology 12: 1464-1469.
- Letourneau DK. 1990. Code of ant-plant mutualism broken by parasite. Science 248: 215-217.
- Levin DA. 1973. The role of trichomes in plant defense. Quarterly Review of Biology 48:3-21.
- Liu SS, Li YH, Liu YQ, Zalucki MP. 2005. Experience-induced preference for oviposition repellents derived from a non-host plant by a specialist herbivore. Ecology Letters 8: 722-729.
- McNair C, Gries G, Gries R. 2000. Cherry bark tortrix, *Enarmonia formosana*: Olfactory recognition of and behavioral deterrence by nonhost angiosperm and gymnosperm volatiles. Journal of Chemical Ecology 26: 809-821.
- Mehto DN, Singh KM, Singh RN. 1988. Influence of intercropping on succession and population build up of insect pests in chickpea, *Cicer arietinum* Linn. Indian Journal of Entomology 50: 257-275.
- Metspalu L, Hiesssar K, Jogar K. 2003. Plants influencing the behavior of large white butterfly (*Pieris brassicae* L.). Agronomy Research 1(2): 211-220.
- Midega CAO, Khan ZR. 2003. Impact of a habitat management system on diversity and abundance of maize stemborer predators in western Kenya. Insect Science and Its Application 23: 301-308.
- Nwile FE, Onasanya A, Togola A, Oyetunji O, Semon M, Tamo M, Bright EO, Ofodile S. 2011. Effect of intercropping maize and cassava with upland NERICA rice varieties on stemborer attack in southwest Nigeria. Journal of Entomology 8(5): 417-428.
- Odeyemi OO, Masika P, Afolayan AJ. 2008. Insecticidal activities of essential oil from the leaves of *Mentha longifolia* L. subsp. *capensis* against *Sitophilus zeamais* (Motschulsky) (Coleoptera: Curculionidae). African Entomology 16: 220-225.
- Papanastasis VP, Arianoutsou M, Lyrantzis G. 2004. Management of biotic resources in ancient Greece, pp. 1-11 In Proceedings of the 10th Mediterranean Ecosystems (MEDECOS) Conference, 25 Apr-01 May 2004, Rhodes, Greece.
- Pickett JA, Griffiths DC. 1980. Composition of aphid alarm pheromones. Journal of Chemical Ecology 6: 349-360.
- Prasad D, Singh KM, Katiyar RN, Singh RN. 1988. Interaction effects of insecticide, intercropping and irrigation on the crop growth, pest incidence and crop yield of pea *Pisum sativum* Linn. Indian Journal of Entomology 50: 116-122.
- Prasad D, Singh KM, Katiyar RN. 1987. Impact of intercropping on the plant growth, pest incidence and crop yield of pea *Pisum sativum* Linn. Indian journal of Entomology 49: 153-172.
- Rashid MA, Alam SN, Rouf FMA, Talekar NS. 2003. Socio-economic parameters of eggplant protection in Jessore District of Bangladesh. AVRDC – The World Vegetable Center, Shanhua, Taiwan, Technical Bulletin 29: 37.
- Rattan RS. 2010. Mechanism of action of insecticidal secondary metabolites of plant origin. Crop Protection 29: 913-920.
- Risch SJ. 1981. Insect herbivore abundance in tropical monocultures and polycultures: An experimental test of two hypotheses. Ecology 62:1325-1340.
- Root RB. 1973. Organization of a plant-arthropod association in simple and diverse habitats: the fauna of collards (*Brassica oleracea*). Ecological Monographs 43: 94-125.
- Rose RI, Dively GP. 2007. Effects of insecticide-treated and lepidopteran-active Bt transgenic sweet corn on the abundance and diversity of arthropods. Environmental Entomology 36(5): 1254-1268.
- Satpathy S, Mishra DS. 2011. Use of intercrops and antifeedants for management of eggplant shoot and fruit borer *Leucinodes orbonalis* (Lepidoptera: Pyralidae). International Journal of Tropical Insect Science 31: 52-58.
- Saxena KN, Basit A. 1982. Inhibition of oviposition by volatiles of certain plants and chemicals in the leafhopper *Amrasca devastans* (Distant). Journal of Chemical Ecology 8(2): 329-338.
- Scherr SJ, McNeely JA. 2008. Biodiversity conservation and agricultural sustainability: Towards a new paradigm of 'ecoagriculture' landscapes. Philosophical Transactions of the Royal Society B 363: 477-494.
- Schoonhoven LM. 1968. Chemosensory bases of host plant selection. Annual Review of Entomology 13: 115-136.
- Sekhar JC, Singh, KM Singh RN, Yeshbir S, Malik KS. 1997. Impact of intercropping on the incidence of green jassid, *Empoasca kerri* on pigeonpea. Indian Journal of Entomology 59: 119-123.
- Shannon CE. 1948. A mathematical theory of communication. Bell System Technical Journal 27: 379-423 and 623-656.
- Sharaby A, Abdel-Rahman H, Moawad S. 2009. Biological effects of some natural and chemical compounds on the potato tuber moth *Phthorimaea operculella* Zell. (Lepidoptera: Gelechiidae). Saudi Journal of Biological Sciences 16: 1-9.
- Shelton AM, Badenes-Perez FR. 2006. Concepts and applications of trap cropping in pest management. Annual Review of Entomology 51: 285-308.
- Singh TVK, Singh KM, Singh RN. 1991b. Impact of intercropping: IV Yields of groundnut. Indian Journal of Entomology 53(3): 369-372.
- Singh TVK, Singh KM, Singh RN. 1991a. Influence of intercropping: III. Natural enemy complex in groundnut. Indian Journal of Entomology 53: 363-368.
- Smith HA, Koenig RL, McAuslane HJ, McSorley R. 2000. Effect of silver reflective mulch and summer squash trap crop on densities of immature *Bemisia argentifolii* (Homoptera: Aleyrodidae) on organic bean. Journal of Economic Entomology 93: 726-731.
- Smith HA, McSorley R. 2000. Potential of field corn as a barrier crop and eggplant as a trap crop for management of *Bemisia argentifolii* (Homoptera: Aleyrodidae) on common bean in north Florida. Florida Entomologist 83: 145-158.
- Sprenkel RK, Brooks WM, van Duyn JW, & Deitz LL. 1979. The effect of three cultural variables on the incidence of *Nomuraea rileyi*, phytophagous Lepidoptera, and their predators on soybeans. Environmental Entomology 8: 334-339.
- Staver C, Guharay F, Monterroso D, Muschler RG. 2001. Designing pest-suppressive multistrata perennial crop systems: Shade-grown coffee in Central America. Agroforestry Systems 53: 151-170.
- Symondson WOC, Sunderland KD, Greenstone MH. 2002. Can generalist predators be effective biocontrol agents? Annual Review of Entomology 47: 561-94.
- Tripathi AK, Prajapati V, Kumar S. 2003. Bioactivities of l-Carvone, d-Carvone, and Dihydrocarvone Toward Three Stored Product Beetles. Journal of Economic Entomology 96(5): 1594-1601.
- Tylianakis JM, Didham RK, Wratten SD. 2004. Improved fitness of aphid parasitoids receiving resource subsidies. Ecology 85: 658-666.
- Vallat A, Dorn S. 2005. Changes in volatile emissions from apple trees and associated response of adult female codling moths over the fruit-growing season. Journal of Agriculture Food and Chemistry 53: 4083-4090.
- Wetzler RE, Risch SJ. 1984. Experimental studies of beetle diffusion in simple and complex crop habitats. Journal of Animal Ecology 53: 1-19.
- Wiley, 2013. Wiley Registry 10th Edition / NIST 2012 Mass Spectral Library, ISBN: 978-1-118-61611-6.
- Yu H, Zhang Y, Wu K, Gao XW, Guo YY. 2008. Field-Testing of Synthetic Herbivore-Induced Plant Volatiles as Attractants for Beneficial Insects. Environmental Entomology 37(6): 1410-1415.
- Zavaleta-Mejía E, Gomez RO. 1995. Effect of *Tagetes erecta* L.–tomato *Lycopersicon esculentum* Mill.) intercropping on some tomato pests. Fitopatologia Brasileira 30: 35-46.
- Zhang QH, Schlyter F. 2004. Olfactory recognition and behavioural avoidance of angiosperm nonhost volatiles by conifer-inhabiting bark beetles. Agriculture Forest Entomology 6: 1-19.
- Zhang W, McAuslane HJ, Schuster DJ. 2004. Repellency of ginger oil to *Bemisia argentifolii* (Homoptera: Aleyrodidae) on tomato. Journal of Economic Entomology 97: 1310-1318.
- Zhang ZQ, Sun XL, Luo ZX, Bian L, Chen ZM. 2014. Dual action of *Catsia tora* in tea plantations: Repellent volatiles and augmented natural enemy population provide control of tea green leafhopper. Phytoparasitica 42(5): 595-607.
- Zunin P, Boggia R, Lanteri S, Leardi S, De Andreis R, Evangelisti F. 2004. Direct thermal extraction and gas chromatographic–mass spectrometric determination of volatile compounds of extra-virgin olive oils. Journal of Chromatography A 1023(2): 271-276.