



Cytogenetic Analysis of *Pseudoponera stigma* and *Pseudoponera gilberti* (Hymenoptera: Formicidae: Ponerinae): a Taxonomic Approach

Authors: Correia, João Paulo Sales Oliveira, Mariano, Cléa dos Santos Ferreira, Delabie, Jacques Hubert Charles, Lacau, Sebastien, and Costa, Marco Antonio

Source: Florida Entomologist, 99(4) : 718-721

Published By: Florida Entomological Society

URL: <https://doi.org/10.1653/024.099.0422>

BioOne Complete (complete.BioOne.org) is a full-text database of 200 subscribed and open-access titles in the biological, ecological, and environmental sciences published by nonprofit societies, associations, museums, institutions, and presses.

Your use of this PDF, the BioOne Complete website, and all posted and associated content indicates your acceptance of BioOne's Terms of Use, available at www.bioone.org/terms-of-use.

Usage of BioOne Complete content is strictly limited to personal, educational, and non - commercial use. Commercial inquiries or rights and permissions requests should be directed to the individual publisher as copyright holder.

BioOne sees sustainable scholarly publishing as an inherently collaborative enterprise connecting authors, nonprofit publishers, academic institutions, research libraries, and research funders in the common goal of maximizing access to critical research.

Cytogenetic analysis of *Pseudoponera stigma* and *Pseudoponera gilberti* (Hymenoptera: Formicidae: Ponerinae): a taxonomic approach

João Paulo Sales Oliveira Correia¹, Cléa dos Santos Ferreira Mariano¹, Jacques Hubert Charles Delabie^{2,3}, Sebastien Lacau⁴, and Marco Antonio Costa^{1,*}

Abstract

Pseudoponera stigma (F.) and *Pseudoponera gilberti* (Kempf) (Hymenoptera: Formicidae) are closely related Neotropical ants, often misidentified due to their morphological similarities. These species also share behavioral and ecological characters. In this study, we examined cytogenetic approaches as a tool to aid identification of *P. stigma* and *P. gilberti*. Both numerical and morphological karyotypic variations were identified based on different cytogenetic techniques. The karyotype formula of *P. stigma*, $2K = 10M + 4SM$ differs from that of *P. gilberti*, $2K = 10M + 2SM$, and the CMA_3 /DAPI sites also differ, allowing both species to be distinguished by chromosomal characters.

Key Words: ant; cytotaxonomy; karyotype; CMA_3 /DAPI

Resumen

Pseudoponera stigma (F.) y *Pseudoponera gilberti* (Kempf) (Hymenoptera: Formicidae) son hormigas neotropicales muy estrechamente relacionadas que a menudo son mal clasificadas debido a sus similitudes morfológicas. Estas especies también comparten caracteres de comportamiento y ecológicas. En este estudio, la citogenética fue utilizado como una herramienta para la caracterización y delimitación taxonómica de *P. stigma* y *P. gilberti*. Se describen variaciones cariotípicas numéricas y morfológicas en base a diferentes técnicas de citogenética. La fórmula cariotipo de *P. stigma*, $2K = 10M + 4SM$ difiere de la de *P. gilberti*, $2K = 10M + 2SM$, así como las localizaciones de los sitios CMA_3 /DAPI, lo que permite distinguir las especies tanto por caracteres cromosómicas.

Palabras Clave: hormigas; citotaxonomía; cariotipo; CMA_3 /DAPI

Previously published cytogenetic studies of 95 ant morphospecies in the subfamily Ponerinae revealed high variation in chromosome number, ranging from $2n = 8$ to $2n = 120$ (Lorite & Palomeque 2010; Mariano et al. 2012). An earlier study of *Pseudoponera* Emery (Mariano et al. 2012) with conventional cytogenetics included 3 species previously placed in the genus *Pachycondyla* (Schmidt & Shattuck 2014). These species have karyotypes with both low chromosome numbers and high frequency of metacentric chromosomes. The karyotypic formula $2K = 10M + 2A$ was reported for *Pseudoponera gilberti* (Kempf) (Kempf 1960), $2K = 12M$ for *Pseudoponera stigma* (F.) (Fabricius 1804), and $2K = 14M$ for *Pseudoponera succedanea* (Roger) (Roger 1863).

Studies of karyotype evolution in ants suggested that karyotypes with low chromosome numbers and large chromosomes exhibit basal characteristics whereas karyotypes with larger numbers of small chromosomes represent derived states (Imai et al. 1994). The trend towards formation of smaller chromosomes by centric fission could be driven by the advantage of reducing the frequency of deleterious chromosomal translocations resulting from physical interactions. This results in an increase in the chromosome number and in the acro-

centric and telocentric content. Additionally, smaller acrocentric and telocentric chromosomes could be converted into meta- and submetacentric chromosomes by pericentric inversion, and centric fusions can also occur (Imai et al. 1986, 1988). Based on these assumptions, we hypothesized that the karyotypes of *P. stigma* and *P. gilberti* would share basal characteristics (Mariano et al. 2012).

Chromosome number and morphology have been the characters most commonly used in comparative cytogenetic studies of ants, especially among closely related species that are difficult to distinguish based on morphological characters (Mariano et al. 2012). However, other cytogenetic methods have been used recently, such as CMA_3 /DAPI fluorochrome staining in *Dinoponera lucida* Kempf (Mariano et al. 2008), *Wasmannia auropunctata* (Roger) (Souza et al. 2011), *Odontomachus* Latreille, *Anochetus* Mayr (Santos et al. 2010), *Mycocepurus goeldii* (Forel) (Barros et al. 2010), and *Acromyrmex striatus* (Roger) (Cristiano et al. 2013). To aid in distinguishing *P. stigma* and *P. gilberti*, we characterized the chromosomes by conventional cytogenetic technique and CMA_3 /DAPI fluorochrome staining.

¹Departamento de Ciências Biológicas, Universidade Estadual de Santa Cruz, 45662-900 Ilhéus, Bahia, Brazil; E-mail: correia_jps@yaho.com.br (J. P. S. O. C.), csfmariano@gmail.com (C. S. F. M.), costama@uesc.br (M. A. C.)

²Laboratório de Mirmecologia, CEPEC/CEPLAC, Caixa Postal 7, 45600-970 Itabuna, Bahia, Brazil; E-mail: jacques.delabie@gmail.com (J. H. C. D.)

³Departamento de Ciências Agrárias e Ambientais, Universidade Estadual de Santa Cruz, 45662-900 Ilhéus, Bahia, Brazil

⁴Laboratório de Biosistemática Animal, Universidade Estadual do Sudoeste da Bahia, Itapetinga 45700-000, Bahia, Brazil; E-mail: slacau@uesb.edu.br (S. L.)

*Corresponding author; E-mail: costama@uesc.br (M. A. C.)



Fig. 1. Map of collection sites. The circles represent the collection points.

Materials and Methods

Colonies of *P. stigma* and *P. gilberti* were collected in forest areas or cocoa plantations in the states of Pernambuco, Bahia, and Espírito Santo, Brazil (Fig. 1; Table 1), from Oct 2011 to Aug 2013. Specimens were identified based on Mackay & Mackay (2010), Schmidt (2013), and Schmidt & Shattuck (2014) in addition to the original descriptions of each species. Vouchers from each sampled nest were deposited in the CPDC collection of the Laboratório de Mirmecologia CEPEC/CEPLAC at Ilhéus, Bahia, Brazil.

Metaphase plates were obtained from cerebral ganglion cells of prepupae by following the methods of Imai et al. (1988). Prepared slides were stained with Giemsa solution in 0.06 M phosphate buffer, pH 6.8, at a ratio of 1:30 for 30 min. Metaphase slides of high quality were photographed with an Olympus BX-41 photomicroscope with a digital camera attached. Karyograms were organized with the use of Adobe Photoshop CS6 software 13.0x 64, arranged according to Levan et al. (1964), and karyotypic formulas were determined from the karyograms.

Base-specific fluorochrome double staining with chromomycin A₃ (CMA₃) and 4,6-diamidino-2-phenylindole (DAPI) followed the method of Schweizer (1976), with modifications proposed by Guerra & Souza (2002). Slides were mounted with Vectashield mounting medium and covered with a coverslip. Slides were analyzed in a DMRA2 Leica epi-

fluorescence photomicroscope and images captured with the Leica IM50 software (Leica Microsystems Imaging Solutions Ltd., Cambridge, United Kingdom).

Results

Thirteen colonies and 182 specimens of both species were sampled, although *P. gilberti* was the most frequently collected (Table 1). Cytogenetic analysis based on multiple samples of *P. gilberti* and *P. stigma* consistently showed a distinct karyotype for each species. Chromosome numbers and karyotypic formulas for each nest sampled and analyzed are given in Table 1.

The karyotype of *P. gilberti* showed $2n = 12$ (females) and $n = 6$ (males), with the 1st pair larger than the remaining chromosomes. With the exception of the 4th chromosome pair that was submetacentric, the remaining chromosomes were metacentric (Figs. 2a, b, and e). The karyotypes of *P. stigma* had $2n = 14$ (females) and $n = 7$ (males) chromosomes (Figs. 2c, d, and f). In this species, the 1st and 2nd pairs were larger and differed in size whereas the remaining chromosomes were very similar in length. The 3rd and 4th pairs were submetacentric and the remaining chromosomes were metacentric.

Fluorochrome staining in *P. gilberti* revealed the presence of a single and conspicuous CMA₃⁺/DAPI⁻ interstitial marking, indicating a segment rich in GC base pairs, in the 1st pair of chromosomes (Fig. 2e). In *P. stigma*, the CMA₃⁺/DAPI⁻ stained segment was located on the short arm of the 4th chromosome pair (Fig. 2f).

Discussion

Both *P. stigma* and *P. gilberti* have very similar external morphology (Kempf 1960; Mackay & Mackay 2010). They are distributed sympatrically and mate at the same time of year (Mackay & Mackay 2010). These species differ mainly in the shape and sculpturing of clypeus and mandibles (Kempf 1960; Mackay & Mackay 2010).

High morphological similarity and the complex taxonomy of this group, especially prior to the revision of *Pachycondyla* (Mackay & Mackay 2010), made identification of these species difficult, and may have contributed to conflicting results in previous studies (e.g., Mariano et al. 2012). In the present study, which included a large sample size, the karyotypes with $2n = 12$ ($2K = 10M + 2SM$) for *P. gilberti* and $2n = 14$ ($2K = 10M + 4SM$) for *P. stigma* were consistently verified in different localities, a result that reinforces the importance of integrated studies using both morphological and genetic data to aid in delimitating similar taxa.

The karyotypes of *P. gilberti* and *P. stigma*, with few chromosomes and a predominance of metacentric and submetacentric chromosomes,

Table 1. Collection localities, species, geographic coordinates, number of nests, and specimens sampled.

Collection locality (municipality)–Brazilian state	Species	Geographic coordinates		No. of nests (No. of specimens)	2n (n)	Karyotype formula (2K)
		Latitude	Longitude			
Igrapiúna (Res. Michelin)–BA	<i>P. gilberti</i>	13.6458°S	39.1706°W	1 (12)	12 (6)	10M + 2SM
Itajuípe (CEPLAC)–BA	<i>P. gilberti</i>	14.6850°S	39.3669°W	1 (18)	12 (6)	10M + 2SM
Moreno–PE	<i>P. gilberti</i>	8.1400°S	35.1494°W	2 (38)	12	10M + 2SM
Porto Seguro (ESPAB)–BA	<i>P. gilberti</i>	16.4192°S	39.1611°W	2 (23)	12 (6)	10M + 2SM
Sooretama–ES	<i>P. gilberti</i>	19.1472°S	40.0706°W	1 (7)	12	10M + 2SM
Una (Faz. Ararauna)–BA	<i>P. gilberti</i>	15.2111°S	39.1847°W	2 (15)	12 (6)	10M + 2SM
Ilhéus (CEPLAC)–BA	<i>P. stigma</i>	14.7856°S	39.2222°W	3 (59)	14 (7)	10M + 4SM
Valença (Faz. Expedito)–BA	<i>P. stigma</i>	13.3361°S	39.1706°W	1 (10)	14 (7)	10M + 4SM

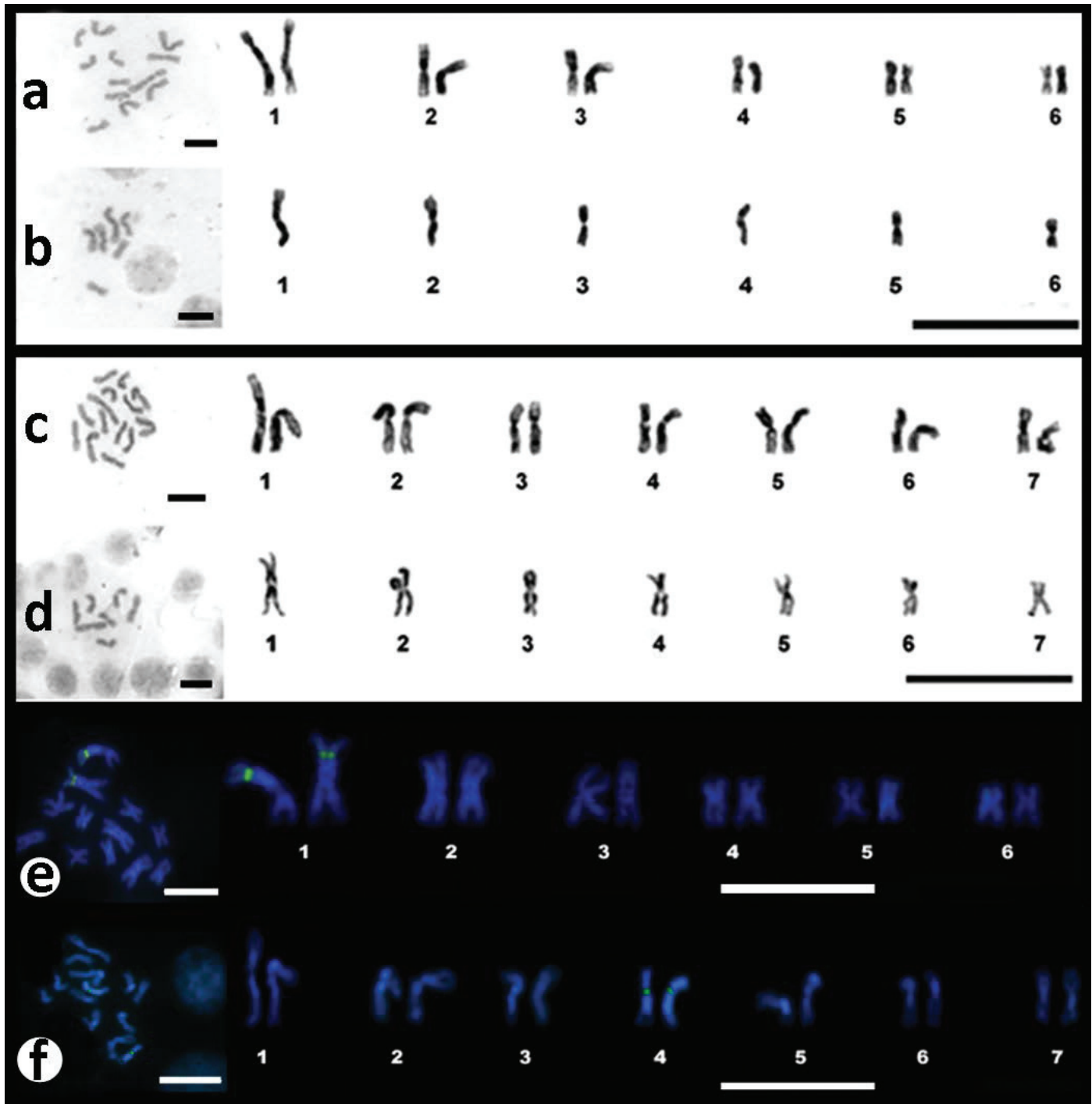


Fig. 2 Metaphases, (a–d) karyograms, and (e and f) karyograms with fluorochrome staining CMA₃/DAPI: (a) female and (b) male of *P. gilberti*; (c) female and (d) male of *P. stigma*; (e) CMA₃⁺ band on the 1st pair, *P. gilberti*; (f) CMA₃⁺ band on the 4th pair, *P. stigma*. Bar = 10 μm.

are in contrast to those of other species of Ponerini, which have up to $n = 60$ chromosomes. Low chromosome number is thought to be plesiomorphic (Imai et al. 1994; Lorite & Palomeque 2010; Mariano et al. 2012).

Other *Ponera*-group genera, such as *Diacamma* Mayr (Imai et al. 1984; Karnik et al. 2010), *Ponera* Latreille (Imai & Kubota 1972; Imai et al. 1988; Lorite & Palomeque 2010), and *Cryptopone* Emery (Imai & Kubota 1972; Imai et al. 1977, 1983), also have species with low chromosome numbers. Schmidt (2013) delimited a monophyletic clade of *Ponera*-group genera based on molecular data, but no morphological synapomorphies have been identified that support the clade (Schmidt & Shattuck 2014).

The CMA₃⁺/DAPI⁺ markings aided in characterizing the karyotypes and distinguishing between the 2 species. The distinct CMA₃⁺/DAPI⁺ sites, which are chromosomal segments rich in GC base pairs, in the karyotypes of *P. gilberti* (1st pair) and *P. stigma* (4th pair) may correspond to their Nucleolus Organizer Regions, as observed in other insects (Manicardi et al. 1996; Kuznetsova et al. 2001; Grozeva et al. 2004; Almeida et al. 2006; Santos et al. 2010). This correlation, however, must be further confirmed with the Nucleolus Organizer Regions banding technique.

Cytogenetic information combined with morphological data was effective in distinguishing *P. stigma* and *P. gilberti*. The original descrip-

tion of *P. stigma* was little detailed (Fabricius 1804; Mackay & Mackay, 2010). Individuals of this species are identified through comparison of morphological, biological, and ecological characters, which may cause errors in identification. A more detailed morphological analysis of *P. stigma*, with a new description of this species is currently in preparation.

Acknowledgments

We thank José Raimundo Maia dos Santos, José Abade (in memoriam), and Yamid Velasco of the Laboratory of Myrmecology CEPEC/UESC, Rodolpho Menezes of the Laboratory of Cytogenetics/UESC, and Muriel Lima of the Laboratory of Animal Biosystematics/UESB. We also thank Ecological Reserve Fazenda São Pedro (Pilar, AL) and Reserve of Vale do Rio Doce (Sooretama, ES) for assistance in field work. This study was funded by the PROTAX (Training Program Taxonomy MCT / CNPq / MEC / CAPES 52/2010) and the PRONEX (Project FAPESB / CNPq 011/2009). The authors acknowledge their grants from CAPES / CNPq (JPSOC) their research grant from CNPq (JHCD, MAC).

References Cited

- Almeida CM, Campener C, Cella DM. 2006. Karyotype characterization, constitutive heterochromatin and nucleolus organizer regions of *Paranaíta opima* (Coleoptera, Chrysomelidae, Alticinae). *Genetics and Molecular Biology* 29: 475–481.
- Barros LAC, Aguiar HJAC, Mariano CSF, Delabie JHC. 2010. Cytogenetic characterization of the lower-attine *Mycocepurus goeldii* (Formicidae: Myrmicinae: Attini). *Sociobiology* 56: 57–67.
- Cristiano MP, Cardoso DC, Fernandes-Salomão TM. 2013. Cytogenetic and molecular analyses reveal a divergence between *Acromyrmex striatus* (Roger, 1863) and other congeneric species: taxonomic implications. *PLoS One* 8: e59784.
- Fabricius JC. 1804. *Systema piezatorum secundum ordines, genera, species, adiectis synonymis, locis, observationibus, descriptionibus*. Brunsvigae, Apud Carolum Reichard, 30. Ants: 395–428.
- Guerra MS, Souza MJ. 2002. Como observar cromossomos: um guia de técnicas em citogenética vegetal, animal e humana. Ribeirão Preto, São Paulo, Brazil.
- Grozeva S, Kuznetsova VG, Nokkala S. 2004. Patterns of chromosome banding in four navid species (Heteroptera, Cimicomorpha, Nabidae). *Hereditas* 140: 99–104.
- Imai HT, Kubota M. 1972. Karyological studies of Japanese ants (Hymenoptera, Formicidae) III. Karyotypes of nine species in Ponerinae, Formicinae and Myrmicinae. *Chromosoma (Berl.)* 37: 193–200.
- Imai HT, Crozier RH, Taylor RW. 1977. Karyotype evolution in Australian ants. *Chromosoma (Berl.)* 59: 341–393.
- Imai HT, Brown Jr WL, Kubota M, Yong HS, Tho YP. 1983. Chromosome observations on tropical ants from western Malaysia. II. Annual Report of National Institute of Genetics (Japan) 34: 66–69.
- Imai HT, Urbani CB, Kubota M, Sharma GP, Narasimhan MN, Das BC, Sharma AK, Sharma A, Deodikar GB, Vaidya VG, Rajasekarasetty MR. 1984. Karyological survey of Indian ants. *Japanese Journal of Genetics* 59: 1–32.
- Imai HT, Maruyama T, Gojobori T, Inoue Y, Crozier RH. 1986. Theoretical bases for karyotype evolution. 1. The minimum-interaction hypothesis. *The American Naturalist* 128: 900–920.
- Imai HT, Taylor RW, Crosland MWJ, Crozier RH. 1988. Modes of spontaneous chromosomal mutation and karyotype evolution in ants with reference to the minimum interaction hypothesis. *Japanese Journal of Genetics* 63: 159–185.
- Imai HT, Taylor RW, Crozier RH. 1994. Experimental bases for the minimum interaction theory. I. Chromosome evolution in ants of the *Myrmecia pilosula* species complex (Hymenoptera: Formicidae: Myrmecinae). *Japanese Journal of Genetics* 69: 137–182.
- Karnik N, Channaveerappa H, Ranganath HA, Gadagkar R. 2010. Karyotype instability in the ponerine ant genus *Diacamma*. *Journal of Genetics* 89: 173–183.
- Kempf WW. 1960. Miscellaneous studies on Neotropical ants. II (Hymenoptera, Formicidae). *Studia Entomologica* 5: 1–38.
- Kuznetsova VG, Westendorff M, Nokkala S. 2001. Patterns of chromosome banding in the sawfly family Tenthredinidae (Hymenoptera, Symphyta). *Caryologia* 54: 227–233.
- Levan A, Fredga K, Sonberg A. 1964. Nomenclature for centromeric position on chromosomes. *Hereditas* 52: 201–220.
- Lorite P, Palomeque T. 2010. Karyotype evolution in ants (Hymenoptera: Formicidae), with a review of the known ant chromosome numbers. *Myrmecological News* 13: 89–102.
- Mackay W, Mackay E. 2010. *The Systematics and Biology of the New World Ants of the Genus Pachycondyla* (Hymenoptera: Formicidae). The Edwin Mellen Press, Lewiston, New York.
- Manicardi GC, Bizzaro D, Galli E. 1996. Heterochromatin heterogeneity in the holokinetic X chromatin of *Megouraviciae* (Homoptera, Aphididae). *Genome* 39: 465–470.
- Mariano CSF, Pompolo S das G, Barros LAC, Mariano-Neto E, Campiolo S, Delabie JHC. 2008. A biogeographical study of the threatened ant *Dinoponera lucida* Emery (Hymenoptera: Formicidae: Ponerinae) using a cytogenetic approach. *Insect Conservation and Diversity* 1: 161–168.
- Mariano CSF, Pompolo S das G, Silva JG, Delabie JHC. 2012. Contribution of cytogenetics to the debate on the paraphyly of *Pachycondyla* spp. *Psyche* 2012: 2–9.
- Roger J. 1863. Die neu aufgeführten Gattungen und Arten meines Formiciden-Verzeichnisses. *Berliner Entomologische Zeitschrift* 7: 133–214.
- Santos IS, Costa AM, Mariano CSF, Delabie JHC, Andrade-Souza V, Silva JG. 2010. A cytogenetic approach to the study of Neotropical *Odontomachus* and *Anochetus* ants (Hymenoptera: Formicidae). *Annals of the Entomological Society of America* 103: 424–429.
- Schmidt CA. 2013. Molecular phylogenetics of ponerine ants (Hymenoptera: Formicidae: Ponerinae). *Zootaxa* 3647: 201–250.
- Schmidt CA, Shattuck SO. 2014. The higher classification of the ant subfamily Ponerinae (Hymenoptera: Formicidae), with a review of Ponerinae ecology and behavior. *Zootaxa* 1: 1–242.
- Schweizer V. 1976. Reverse fluorescent chromosome banding. *Chromosoma* 58: 317–324.
- Souza ALB, Mariano CSF, Delabie JHC, Pompolo SG, Serrão JE. 2011. Cytogenetic studies on workers of the Neotropical ant *Wasmannia auropunctata* (Roger, 1863) (Hymenoptera: Formicidae: Myrmicinae). *Annales de la Société Entomologique de France* 47: 510–513.