



First Record of *Membracis juncta* (Walker) (Hemiptera: Membracidae) in *Tibouchina candolleana* (Mart. ex DC.) (Melastomataceae)

Authors: Vieira, Estela Rosana Durães, Júnior, Sebastião Lourenço de Assis, Soares, Marcus Alvarenga, Santos, Gleica Cândido, Barroso, Gabriel Alves, et al.

Source: Florida Entomologist, 102(1) : 275-277

Published By: Florida Entomological Society

URL: <https://doi.org/10.1653/024.102.0153>

BioOne Complete (complete.BioOne.org) is a full-text database of 200 subscribed and open-access titles in the biological, ecological, and environmental sciences published by nonprofit societies, associations, museums, institutions, and presses.

Your use of this PDF, the BioOne Complete website, and all posted and associated content indicates your acceptance of BioOne's Terms of Use, available at www.bioone.org/terms-of-use.

Usage of BioOne Complete content is strictly limited to personal, educational, and non - commercial use. Commercial inquiries or rights and permissions requests should be directed to the individual publisher as copyright holder.

BioOne sees sustainable scholarly publishing as an inherently collaborative enterprise connecting authors, nonprofit publishers, academic institutions, research libraries, and research funders in the common goal of maximizing access to critical research.

First record of *Membracis juncta* (Walker) (Hemiptera: Membracidae) in *Tibouchina candolleana* (Mart. ex DC.) (Melastomataceae)

Estela Rosana Durães Vieira^{1,*}, Sebastião Lourenço de Assis Júnior¹, Marcus Alvarenga Soares², Gleica Cândido Santos¹, Gabriel Alves Barroso¹, Thiago de Assis Tavares¹, and Luciana Monteiro Aguiar²

The plant family Melastomataceae consists of 5,000 species, divided into roughly 166 genera (Renner et al. 2016). In Brazil, it is present in every phytogeographical domain, including 69 genera and 1,393 species, of which 65% are endemic (Goldenberg et al. 2012). The genus *Tibouchina* spp. consists of about 350 species that are found in tropical and subtropical regions in the Americas (Peralta 2002).

Tibouchina candolleana (Mart. ex DC.), also known as “Quaresmeira,” is a native species that grows in the states of Bahia, Minas Gerais, Goiás, and Distrito Federal (Lorenzi 2002). It has potential for planting along streets under the power lines, and is widely planted in urban areas due to its profuse flowering. It is also used in reforestation of degraded areas (Ferreira et al. 2007). In addition, *T. candolleana* has medicinal properties, possessing chemicals with microbial activity (Santos et al. 2012).

Despite its potential usefulness, *Tibouchina* spp. are susceptible to damage by insects (Lorenzi 2002). Duarte et al. (2008) studied urban reforestation in Maringá, in Paraná State, and noted that *T. candolleana* plants often are attacked by termites (Blattodea; formerly Isoptera). Quaresmeira also is susceptible to beetles from the coleopteran family Chrysomelidae, according to a report by Santos et al. (2015) in Minas Gerais, where they found damage in *Tibouchina* spp. flowers and leaves. Maia et al. (2014) surveyed gall-inducing insects that live in Brazilian cerrado (savannah), and observed that Melastomataceae were important hosts for galls caused by Diptera, Lepidoptera, and Coleoptera. In Minas Gerais, gall-inducing insects from the family Cecidomyiidae (Diptera) were found to affect *T. candolleana* (Maia & Silva 2011). Finally, in Piracicaba in São Paulo State, *Frankliniella* sp. (Thysanoptera: Thripidae) was collected from *Tibouchina* sp. flowers (Monteiro et al. 2001).

The Membracidae (Hemiptera) often can be recognized by the very well-developed pronotum, which may cover the head, assume unusual shapes, and extend back over the abdomen (Wood 1993; Wallace 2008). They are piercing-sucking insects that cause direct and indirect damage to plants. Direct damage is associated with sap removal, as well as injection of toxins and plant pathogens. Membracids remove photoassimilates, which are rich in carbohydrates but poor in amino acids. Thus, these insects have a highly efficient filtering system that

retains the amino acids, but filters out the excess liquid, which are rich in sugars (honeydew) (Lopes 1996). The presence of honeydew on the leaves supports growth of blackish fungus (*Capnodium* sp.) that interferes with photosynthesis, resulting in indirect damage (Lin 2006; Wallace 2008; Lencioni Neto 2011).

The objective of this report is to document the occurrence of *Membracis juncta* (Walker) (Hemiptera: Membracidae) for the first time on *Tibouchina candolleana* (Mart. ex DC.) Cogn. (Melastomataceae) plants.

Eggs, nymphs, and adults of *M. juncta* were observed on *T. candolleana* that compose the urban forest in the Vila Arraiolos and Vale dos Diamantes neighborhoods in Diamantina, Minas Gerais (Fig. 1). The observations were made in Jul 2015 and again in Jul 2018.

Membracids were collected and sent to Antonio José Creão Duarte, from the Systematics and Ecology Department of Universidade Federal da Paraíba, in João Pessoa, Paraíba, Brazil, who provided species determination.

Adult *M. juncta* are black with a laterally flattened body, and have a continuous white stripe of irregular width dorsolaterally on the pronotum, merging posteriorly (Fig. 2A). The nymphs are principally white with dark legs, and spines on the dorsal abdomen (Fig. 2B). The eggs are whitish in color, about 1 mm long, and cylindrical. Egg clusters are covered with waxy secretions, as was reported by Wood (1993). The insects were found on leaves, adjacent to the stems, and covered with a waxy substance. Both immature and adult *M. juncta* prefer the young, tender parts of the plant, and normally are found at the apical meristems (Fig. 1C).

Necrotic spots found on *T. candolleana* leaves were the most characteristic symptom of damage caused by these treehoppers. *Trigona spinipes* (F.) (Hymenoptera: Apidae), also known as Irapuá (Fig. 1B) is commonly associated with *M. juncta*. Although the association with *M. juncta* honeydew is not mandatory (Baronio et al. 2012), the collection of honeydew by the bees may increase the sap consumption by the treehoppers, thus increasing the damage to plants (Vieira et al. 2007). The presence of the predatory bug *Supputius cinciceps* (Stål) (Hemiptera: Heteroptera: Asopinae) attacking nymphs and adults was observed (Fig. 1D).

¹Departamento de Engenharia Florestal, Universidade Federal dos Vales do Jequitinhonha e Mucuri, 39100-000, Diamantina, Minas Gerais State, Brazil; E-mail: estela.duraes@gmail.com (E. R. D. V.); assisjr_ento@yahoo.com.br (S. L. A. J.); gleicacandidosantos@gmail.com (G. C. S.); gabrieltuche@yahoo.com.br (G. A. B.); thiagoassisflo@gmail.com (T. A. T.)

²Departamento de Agronomia, Universidade Federal dos Vales do Jequitinhonha e Mucuri, 39100-000, Diamantina, Minas Gerais State, Brazil; E-mail: marcusasoares@yahoo.com.br (M. A. S.); lumonaguiar@hotmail.com (L. M. A.)

*Corresponding author; E-mail: estela.duraes@gmail.com



Fig. 1. (A) *Tibouchina candolleana* (DC.) (Melastomataceae) infested by *Membracis juncta* (Walker) (Hemiptera: Membracidae), Diamantina, Minas Gerais, Brazil, 2015; (B) Association of *M. juncta* with *Trigona spinipes* (F.) (Hymenoptera: Apidae); (C) Nymphs and adult *M. juncta* on young parts of the plant; (D) *Supputius cincticeps* (Stål) (Hemiptera: Pentatomidae) attacking *M. juncta*.

This is the first record of *M. juncta* feeding on *T. candolleana* in Brazil. Due to the potential damage to *T. candolleana* by *M. juncta*, these plants should be monitored for the presence of these insects.

Summary

Tibouchina candolleana (Mart. ex DC.) plants are used in urban reforestation in several cities because its height is compatible with power lines, as well as for its profuse flowering. However, it is susceptible to damage by several insects. Here we provide the first report of *Membracis juncta* (Walker) (Hemiptera: Membracidae) attacking *T. candolleana* plants in Diamantina, Minas Gerais, Brazil. Eggs, nymphs, and adult insects of *M. juncta* were found apically, feeding on young, tender tissues. Their feeding resulted in necrosis on leaves.

Key Words: ornamental plants; quaresmeira; piercing-sucking insects; treehoppers

Sumário

Plantas de *Tibouchina candolleana* (DC.) Cogn são utilizadas na arborização urbana de diversas cidades pela altura compatível com a rede elétrica e exuberância floral. Além disso, esta espécie possui compostos que apresentam atividade microbiana, podendo também, ser utilizadas no reflorestamento de áreas degradadas. Este trabalho relata o primeiro registro de ocorrência do Hemiptera *Membracis juncta*

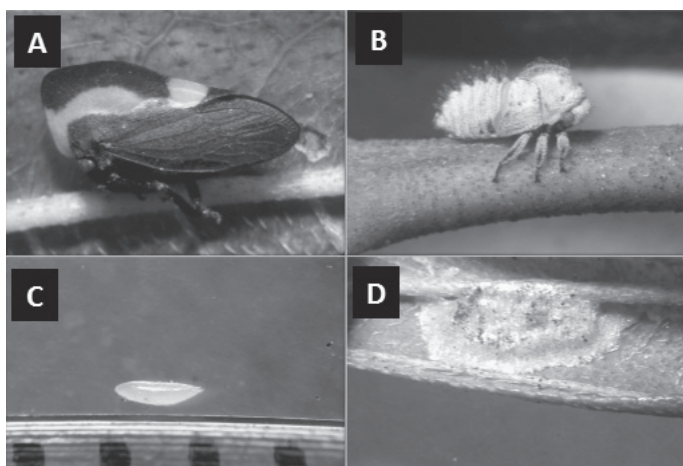


Fig. 2. *Membracis juncta* (Walker) (Hemiptera: Membracidae): (A) adult; (B) nymph; (C) egg; (D) waxy covering on the eggs.

atacando plantas de *T. candolleana* no Brasil, que compõem a arborização urbana de Diamantina, estado de Minas Gerais. Foram constatados insetos adultos, ninfas e ovos de *M. juncta* nas partes jovens e tenras das plantas. Bem como, pontos necrosados nas folhas, decorrentes do hábito alimentar sugador destes insetos.

Palavras Chave: plantas ornamentais; quaresmeira; sugador

References Cited

- Baronio GJ, Vieira-Pires AC, Aoki C. 2012. *Trigona branneri* (Hymenoptera: Apidae) as a collector of honeydew from *Aethalion reticulatum* (Hemiptera: Aethalionidae) on *Bauhinia forficata* (Fabaceae: Caesalpinoideae) in a Brazilian savanna. *Sociobiology* 59: 407–414.
- Duarte FG, Santos GA, Rosado FR, Delariva RL, Sampaio ACF. 2008. Cupins (Insecta: Isoptera) na arborização urbana da zona 1 de Maringá PR. *Revista em Agronegócios e Meio Ambiente* 1: 77–86.
- Ferreira WC, Botelho SA, Davide AC, Faria JMR. 2007. Avaliação do crescimento do estrato arbóreo de área degradada revegetada à margem do Rio Grande, na Usina Hidrelétrica de Camargos, MG. *Revista Árvore* [online] 31: 177–185.
- Goldenberg R, Baumgratz JFA, Souza, D'el Rei ML. 2012. Taxonomia de Melastomataceae no Brasil: retrospectiva, perspectivas e chave de identificação para os gêneros, *Rodriguésia* [online] 63:145–16.
- Lencioni Neto F. 2011. Riqueza de espécies e distribuição espacial dos membracidae (Hemiptera: Auchenorrhyncha) em uma pequena área do campus urbano da Universidade do Vale do Paraíba - SP, Brasil. *Revista Univap* 17: 80–98.
- Lin CP. 2006. Social behavior and life history of Membracine treehoppers. *Journal of Natural History* 40: 1887–1907.
- Lopes JRS. 1996. Mecanismos de transmissão de *Xylella fastidiosa* por cigarrinhas. *Revista Técnico-Científica de Citricultura* 17: 79–92.
- Lorenzi H. 2002. Árvores Brasileiras: Manual de Identificação e Cultivo de Plantas Arbóreas do Brasil. [4ª edição]. Instituto Plantarum, Rio de Janeiro, Rio de Janeiro, Brazil.
- Maia VC, Rodrigues AR, Ascendino SHS, Boggi M. 2014. The insect gall collection of the Museu Nacional/Universidade Federal do Rio de Janeiro: biome cerrado, rupestrian fields. *Brazilian Journal of Biology* 74: 207–217.
- Maia VC, Silva SAH. 2011. Representatividade do gênero *Lopesia* rübsaamen (Diptera, Cecidomyiidae) no Brasil. *Papeis Avulsos de Zoologia* 51: 359–365.
- Monteiro RC, Mound LA, Zucchi RA. 2001. Sistemática, morfologia e fisiologia espécies de *Frankliniella* (Thysanoptera: Thripidae) de importância agrícola no Brasil. *Neotropical Entomology* 30: 65–72.
- Peralta P. 2002. Las especies del genero *Tibouchina* (Melastomataceae) en Argentina. *Darwiniana* 40: 107–120.
- Renner SS, Triebel D, Almeda F, Stone D, Ulloa CU, Michelangeli FA, Goldenberg R, Cifuentes HM. 2016. Melastomataceae. A site with information on the biodiversity of Melastomataceae. Disponível em www.melastomataceae.net (last accessed 17 Jun 2018).
- Santos FM, Souza MG, Crotti AEM, Martins CHG, Ambrósio SR, Veneziani RCS, Silva MLAE, Cunha WR. 2012. Evaluation of antimicrobial activity of extracts of *Tibouchina candolleana* (Melastomataceae), isolated compounds and semi-synthetic derivatives against endodontic bacteria. *Brazilian Journal of Microbiology* 43: 793–799.
- Santos LS, Boaventura MGC, Cornelissen TG. 2015. Florivory and insect herbivory in *Tibouchina* sp. (Melastomataceae), pp.150 *In V* Simpósio de Internacional de Entomologia, Aug 2015, Viçosa, Minas Gerais, Brazil.
- Vieira CU, Rodovalho MC, Almeida LO, Siquieroli ACS, Bonetti AM. 2007. Interação Entre *Trigona spinipes* (Fabricius, 1793) com *Aethalion reticulatum* (Linnaeus, 1767) em *Mangifera indica* (Anacardiaceae). *Bioscience Journal* 23: 10–13.
- Wallace MS. 2008. Occurrence of treehoppers (Hemiptera: Membracidae: Smiliinae) on oaks in Delaware Water Gap National Recreation Area, 2004–2006. *Journal of Insect Science* 8: 1–16.
- Wood TK. 1993. Diversity in the New World Membracidae. *Annual Review of Entomology* 38: 409–433.