



Evaluation of the Penman-Monteith (FAO 56 PM) Method for Calculating Reference Evapotranspiration Using Limited Data

Authors: Córdova, Mario, Carrillo-Rojas, Galo, Crespo, Patricio, Wilcox, Bradford, and Céleri, Rolando

Source: Mountain Research and Development, 35(3) : 230-239

Published By: International Mountain Society

URL: <https://doi.org/10.1659/MRD-JOURNAL-D-14-0024.1>

BioOne Complete (complete.BioOne.org) is a full-text database of 200 subscribed and open-access titles in the biological, ecological, and environmental sciences published by nonprofit societies, associations, museums, institutions, and presses.

Your use of this PDF, the BioOne Complete website, and all posted and associated content indicates your acceptance of BioOne's Terms of Use, available at www.bioone.org/terms-of-use.

Usage of BioOne Complete content is strictly limited to personal, educational, and non-commercial use. Commercial inquiries or rights and permissions requests should be directed to the individual publisher as copyright holder.

BioOne sees sustainable scholarly publishing as an inherently collaborative enterprise connecting authors, nonprofit publishers, academic institutions, research libraries, and research funders in the common goal of maximizing access to critical research.

Evaluation of the Penman-Monteith (FAO 56 PM) Method for Calculating Reference Evapotranspiration Using Limited Data

Application to the Wet Páramo of Southern Ecuador

Mario Córdova^{1*}, Galo Carrillo-Rojas^{2,3}, Patricio Crespo¹, Bradford Wilcox⁴, and Rolando Célleri¹

* Corresponding author: marioandrescm@yahoo.com

¹ Departamento de Recursos Hídricos y Ciencias Ambientales & Facultad de Ciencias Agropecuarias, Universidad de Cuenca, Víctor Manuel Albornoz y los Cerezos, Campus Balzay, Cuenca, Ecuador

² Departamento de Recursos Hídricos y Ciencias Ambientales & Facultad de Ciencias Químicas, Universidad de Cuenca, Víctor Manuel Albornoz y los Cerezos, Campus Balzay, Cuenca, Ecuador

³ Laboratory for Climatology and Remote Sensing, Faculty of Geography, University of Marburg, Deutschhausstraße 10, D-35032 Marburg, Germany

⁴ Department of Ecosystem Science and Management, Texas A&M University, College Station, Texas, USA

Open access article: please credit the authors and the full source.



Reference evapotranspiration (ET_o) is often calculated using the Penman-Monteith (FAO 56 PM; Allen et al 1998) method, which requires data on temperature, relative humidity, wind speed, and solar radiation. But in high-

mountain environments, such as the Andean páramo, meteorological monitoring is limited and high-quality data are scarce. Therefore, the FAO 56 PM equation can be applied only through the use of an alternative method suggested by the same authors that substitutes estimates for missing data. This study evaluated whether the FAO 56 PM method for estimating missing data can be effectively used for páramo landscapes in

the high Andes of southern Ecuador. Our investigation was based on data from 2 automatic weather stations at elevations of 3780 m and 3979 m. We found that using estimated wind speed data has no major effect on calculated ET_o but that if solar radiation data are estimated, ET_o calculations may be erroneous by as much as 24%; if relative humidity data are estimated, the error may be as high as 14%; and if all data except temperature are estimated, errors higher than 30% may result. Our study demonstrates the importance of using high-quality meteorological data for calculating ET_o in the wet páramo landscapes of southern Ecuador.

Keywords: Ecuador; Andes; mountainous regions; reference evapotranspiration; meteorological data; limited data; tropical mountains; Penman-Monteith.

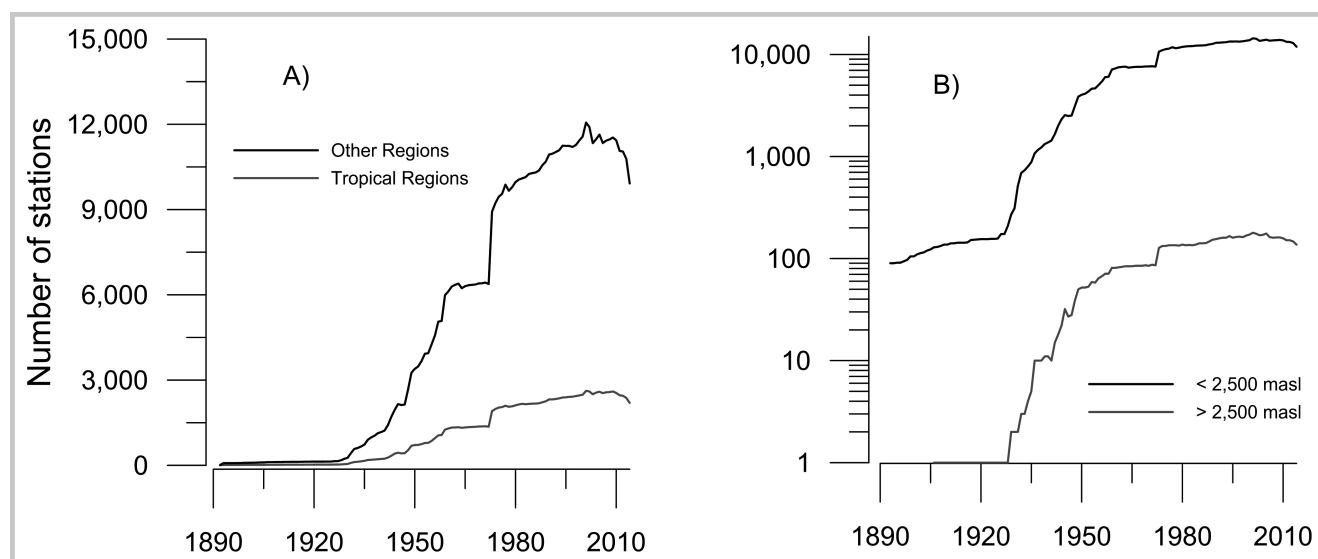
Peer-reviewed: April 2015 **Accepted:** May 2015

Introduction

Evapotranspiration (ET) is a fundamental component of the water cycle and profoundly important for the energy cycle. An understanding of ET is crucial for myriad scientific and management issues, including hydrology (Buytaert, Iñiguez et al 2006; Senay et al 2009), hydroinformatics (Vázquez and Hampel 2014), water resources management (Kisi and Cengiz 2013), agricultural management (Yoder et al 2005), crop simulation models (Ababaei 2014), climatology (Midgley et al 2002), ecohydrology (D'Odorico et al 2010), and even biodiversity (Fisher et al 2011). A common approach for calculating ET is the 2-step evapotranspiration method (Gong et al 2006), which consists of calculating reference evapotranspiration (ET_o) and then using a crop coefficient to calculate ET. The advantage of this method is that it provides a framework for standardizing potential ET (Allen et al 1998).

For the first step, calculating ET_o , the United Nations Food and Agriculture Organization (FAO) adopted the Penman-Monteith method in its Irrigation and Drainage Paper No. 56. Known as FAO 56 PM, this method is a global standard based on meteorological data (Allen et al 1998), and it has been found to work well in numerous locations if the required data are available (Allen et al 1989; Garcia et al 2004; López-Urrea et al 2006; Xing et al 2008). The FAO 56 PM method requires measurements of temperature, relative humidity, wind speed, and solar radiation. This data demand is the main constraint on its use in locations where climate data are limited (Stöckle et al 2004; Trajkovic and Kolakovic 2009a; Li et al 2012; Rahimikhoob et al 2012). This is a common problem in developing countries (Droogers and Allen 2002; Exner-Kittridge and Rains 2010; Gocic and Trajkovic 2010; Tabari 2010; Hou et al 2013) and especially for tropical regions (Wohl et al 2012) and high-altitude areas (Kollas et al 2014), as highlighted in Figure 1.

FIGURE 1 Number of meteorological stations in the National Oceanic and Atmospheric Administration (NOAA) global database, 1890–2012. (A) Tropical regions compared to other regions; (B) elevations above and below 2500 masl. (Note that the vertical axis is logarithmic.)



To overcome this difficulty, the FAO 56 PM method includes procedures for estimating meteorological data using other, more commonly measured variables such as minimum and maximum temperature (Allen et al 1998). These procedures have been tested in a variety of conditions, including a semiarid location in Tunisia (Jabloun and Sahli 2008), a cold humid location in Canada (Sentelhas et al 2010), and 2 temperate locations—one in Bulgaria (Popova et al 2006) and the other in Korea (Kwon and Choi 2011). But they have been tested only to a very limited extent for high-elevation landscapes. Another method, the Hargreaves method, which allows estimation of ET_o on the basis of temperature data only, has been tried in a few studies, focused on the Bolivian *altiplano* (García et al 2004), Florida (Martínez et al 2010), Iran (Fooladmand and Haghghat 2007), Tanzania (Igbadun et al 2006), China (Xu et al 2013), and in 1 case, global patterns (Droogers and Allen 2002).

Climate data are often limited for mountain environments, even though they occupy close to 25% of the continental surface (Beniston 2006), are home to a quarter of the global population (Meybeck et al 2011), and directly or indirectly provide sustenance and water for more than half of the global population (Beniston 2006). In the tropics, 1 mountain region of particular importance is the high-elevation grassland of the northern Andes known as the *páramo*. The *páramo* is the major source of water for the Andean highlands of Venezuela, Colombia, and Ecuador, much of the adjacent lowland areas, and the arid coastal plains of northern Peru (Buytaert, Céleri et al 2006). In Ecuador, the Andean highlands provide water for hydropower, agriculture (De Bièvre et al 2003), and domestic and industrial uses, as well as numerous environmental services (Céleri and Feyen 2009). Like all mountainous regions, the *páramo* is topographically

complex, which not only gives rise to dramatic differences in climate over short horizontal and vertical distances (Becker and Bugmann 1997), but also presents a particularly challenging environment for meteorological monitoring.

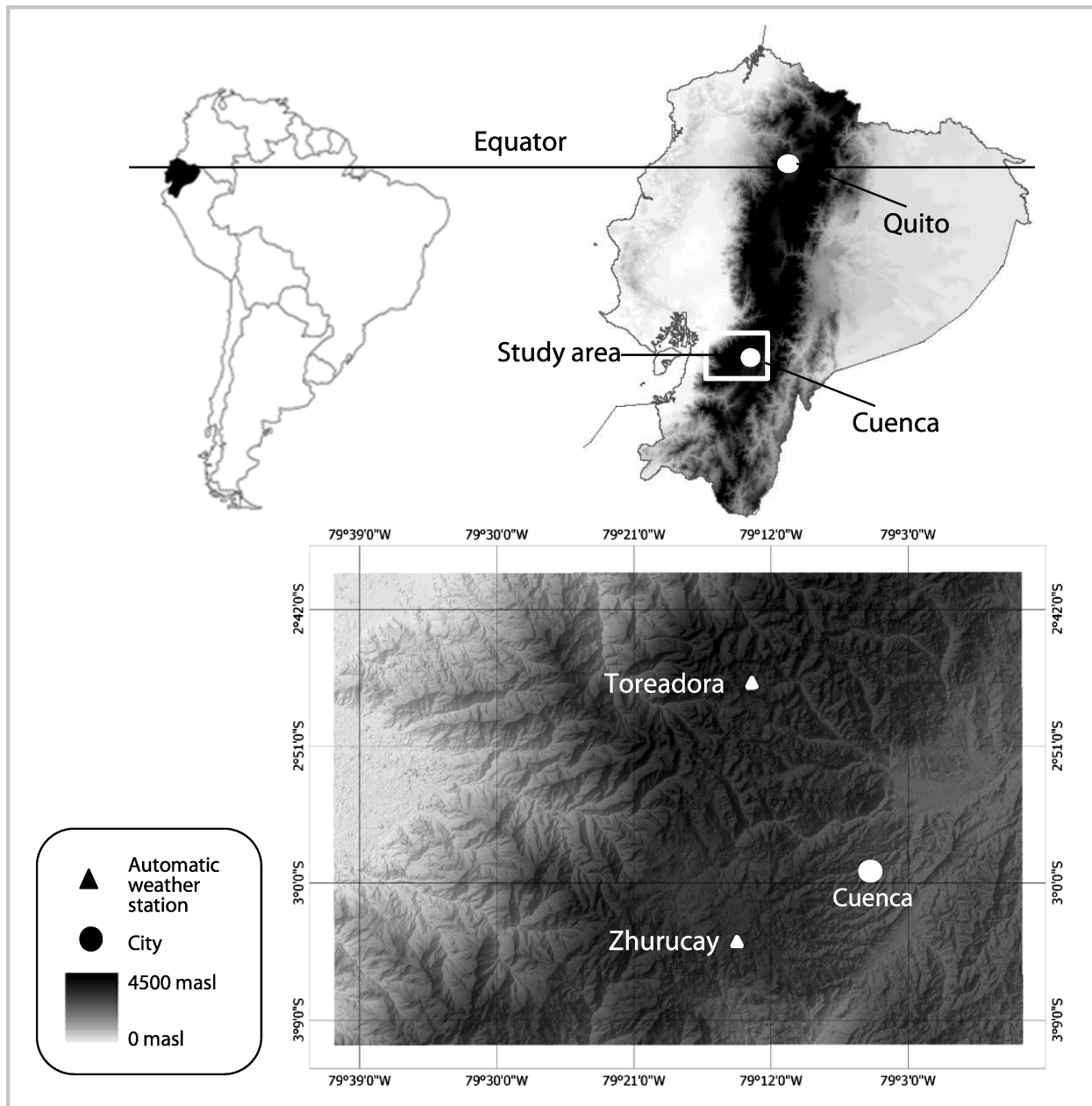
Reliable estimates of ET_o are needed for many hydrological, ecological, and agricultural applications. In light of the paucity of climate data for tropical high mountains, our study of the Ecuadorian *páramo* aimed to evaluate the accuracy of the FAO 56 PM method for calculating ET_o using different combinations of incomplete climate data. We tested 6 cases, each with a different type and/or number of missing variables.

Materials and methods

Meteorological data measurements

The meteorological data for this study came from 2 automatic weather stations, both located in the high-elevation *páramo* of Ecuador: 1 in the Zhurucay river basin (79.24°W; 3.06°S; 3780 masl) on the Pacific side of the Andes, from which we obtained 2 years of data (March 2011–February 2013), and 1 near Toreadora Lake (79.22°W; 2.78°S; 3979 masl) on the Atlantic side, from which we obtained 1 year of data (2013) (Figure 2). At each site, temperature, relative humidity, wind speed, and solar radiation were recorded every 5 minutes. Both stations have excellent quality data, in accordance with the standards outlined in Allen (1996). We also obtained temperature data from a conventional weather station of the Instituto Nacional de Meteorología e Hidrología (National Institute of Meteorology and Hydrology) installed in the vicinity. By comparing our data with the long-term data from this station (1963 to present), we confirmed that the years considered in our study did not present anomalies.

FIGURE 2 Locations of automatic weather stations.



To avoid bias due to differences in sensor accuracy and precision, both weather stations were equipped with the same sensor configuration. Air temperature and relative humidity were measured by means of a Campbell Scientific CS-215 combined probe with radiation shield. A Met-One 034B Windset anemometer was used to measure wind speed. Finally, solar radiation was measured using a CS300 Apogee pyranometer manufactured by Campbell Scientific. Table 1 shows average values for the meteorological variables measured at the study sites, as well as maximum and minimum values for temperature.

ET_o calculations

Daily *ET_o* was calculated for both stations by means of the FAO 56 PM equation (Allen et al 1998):

$$ET_o = \frac{0.408\Delta(R_n - G) + \gamma \frac{900}{T + 273} u_2 (e_s - e_a)}{\Delta + \gamma(1 + 0.34u_2)}, \quad (1)$$

where *ET_o* is the reference evapotranspiration (mm day⁻¹); *R_n* is the net radiation at the crop surface (MJ m⁻² day⁻¹), which was estimated according to the procedures outlined by Allen et al (1998); *G* is the soil heat-flux density (MJ m⁻²

TABLE 1 Meteorological variables at the 2 weather stations.

	Temperature (°C)			Relative humidity (%)	Solar radiation (MJ m ⁻¹ day ⁻¹)	Wind speed (m s ⁻¹)
	Average	Maximum	Minimum			
Toreadora	5.41	17.21	-1.70	89.37	12.13	2.31
Zhurucay	5.98	15.88	-2.35	91.44	13.90	3.62

day⁻¹), which can be assumed as zero for daily calculations according to Allen et al (1998); T is the mean daily air temperature (°C) at a height of 2 m; u_2 is the wind speed at a height of 2 m (m s⁻¹); e_s is the saturation vapor pressure (kPa); e_a is the actual vapor pressure (kPa), which is based on relative humidity measurements; $(e_s - e_a)$ is the saturation vapor pressure deficit (VPD) (kPa); Δ is the slope of the vapor pressure curve (kPa °C⁻¹); and γ is the psychrometric constant (kPa °C⁻¹).

As noted earlier, the use of the FAO 56 PM equation requires a complete data set. For situations in which climate data are incomplete, the authors (Allen et al 1998) proposed an alternative method that substitutes estimated values for the missing meteorological variables. These estimates are determined as described below.

Solar radiation: Solar radiation (R_s) is estimated as a function of minimum and maximum air temperature, on the assumption that differences between maximum and minimum temperature are governed by the daily R_s at a given location, as proposed by Hargreaves and Samani (1985):

$$R_s = k_{R_s} \sqrt{(T_{max} - T_{min})} R_a, \tag{2}$$

where R_a is the extraterrestrial radiation (MJ m⁻² day⁻¹), T_{max} is the maximum air temperature (°C), T_{min} is the minimum air temperature (°C), and k_{R_s} is the adjustment coefficient (°C^{-0.5}). For this study we used $k_{R_s} = 0.16$ because the study area is in an interior region where air masses are not influenced by large water bodies (Allen et al 1998).

Relative humidity: When relative humidity (RH) data are lacking, the actual vapor pressure (e_a) can be calculated by assuming that dewpoint temperature (T_{dew}) is close to T_{min} . This is usually the case at sunrise at reference weather stations (Allen et al 1998). This assumption appears to reflect the typical conditions of the páramo: RH reaches saturation 66% and 82% of the days in Toreadora and Zhurucay, respectively, and it reaches values higher than 95% almost every day (94% and 97% of the days for Toreadora and Zhurucay, respectively). Thus, we assumed that $RH = 100\%$ when T_{min} occurs, and on that basis we calculated e_a in kPa as follows:

$$e_a = e^\circ(T_{min}) = 0.611 \times e^{\left(\frac{17.27 T_{min}}{T_{min} + 237.3}\right)} \tag{3}$$

where $e^\circ(T_{min})$ is the function described on the right side, T_{min} is the minimum temperature, and e is the exponential function.

Wind speed: When no wind data are available, Allen et al (1998) proposed using average wind speeds measured in a nearby location within the same homogeneous region. But because the scarcity of meteorological monitoring in the Andean páramo made this option impossible, we instead used a second option suggested by Allen et al (1998): We assumed $u_2 = 2 \text{ m s}^{-1}$ (an average value from 2000 stations around the world).

Estimations of ET_o with different combinations of missing data: We calculated ET_o for 3 cases of single missing variables: wind speed ($-u_2$), solar radiation ($-R_s$), and relative humidity ($-RH$); and for 3 cases of combinations of missing variables: $-R_s$ and $-u_2$; $-R_s$ and $-RH$; and $-R_s$, $-RH$, and $-u_2$. All 6 of these ET_o calculations were compared with calculations made on the basis of the complete data set, to assess the accuracy of the FAO 56 method for calculating ET_o when data are missing.

In addition, we evaluated the temperature-based Hargreaves method (Equation 4), to compare the results with those obtained by the FAO 56 PM method for estimating ET_o when only temperature data were available:

$$ET_o = 0.408 \times 0.0023(T_{mean} + 17.8)(T_{max} - T_{min})^{0.5} R_a, \tag{4}$$

where T_{mean} is the mean of T_{max} and T_{min} , R_a is extraterrestrial radiation, and the 0.408 coefficient is the conversion factor for MJ m⁻² day⁻¹ to mm day⁻¹.

Data analysis

In accordance with previous work (eg Jacovides and Kontoyiannis 1995; Garcia et al 2004; Popova et al 2006; Sentelhas et al 2010; Kwon and Choi 2011), we also used mean bias error (MBE) and root mean square error (RMSE) to evaluate the quality of ET_o calculations made with incomplete climate data. We computed MBE and RMSE in mm day⁻¹ using Equations 5 and 6, respectively. In addition, we used percentual mean bias error (%MBE) (Equation 7) because in the páramo, the low ET_o rates yield lower MBE values than those obtained in other regions (eg arid and semiarid climates), which could lead to misinterpretation of the results:

$$MBE = \frac{1}{n} \sum_{i=1}^n (ET_{o,est} - ET_{o,ref}) \tag{5}$$

TABLE 2 Performance evaluation criteria for the FAO 56 PM method of calculating ET_o using incomplete data.

Percentual Mean Bias Error	Quality of the Calculation
<5%	Excellent
5–10%	Good
10–15%	Acceptable
>15%	Poor

$$RMSE = \sqrt{\frac{1}{n} \sum_{i=1}^n (ET_{o_{est}} - ET_{o_{ref}})^2} \quad (6)$$

$$\%MBE = \frac{1}{n} \sum_{i=1}^n \left(\frac{ET_{o_{est}} - ET_{o_{ref}}}{ET_{o_{ref}}} \right) * 100, \quad (7)$$

where $ET_{o_{est}}$ is the reference evapotranspiration calculated with incomplete data, $ET_{o_{ref}}$ is the reference evapotranspiration calculated with complete data sets, and n is the number of days.

To evaluate the performance of the FAO 56 PM method for the different cases of missing data, we followed the criteria described in Table 2. It should be noted that the criteria for maximum permissible errors are subjective and depend on the particular application (Annandale et al 2002).

Results

Calculations of ET_o became progressively less accurate as the number of estimated variables increased, with ET_o being overestimated for both locations (Table 3; Figure 3). When only wind data were missing, the calculations were excellent. When only RH data were

missing, the calculations were good for Toreadora and acceptable for Zhurucay. When only R_s data were missing, the calculations were acceptable for Zhurucay and poor for Toreadora (Table 3). When data for 2 or more variables were missing, calculations were poor for all combinations at both sites, and the same was true for the Hargreaves method; not only was ET_o overestimated, but the models' ability to capture the full range of ET_o over the period of study declined (Figure 3).

Figure 4 shows temporal differences in daily ET_o for the Toreadora site, highlighting the clear seasonal differences. All of the ET_o calculations, based on all 6 cases of estimated variables, were better for the months of June through August—even those with the most limited data. However, calculations for the September–May time frame, all of which were missing R_s data, were much poorer. At the same time, calculations based on data lacking only wind speed or RH were better during the entire year. Calculations of ET_o for the Zhurucay site exhibited the same general behavior for all 6 cases of estimated variables, except that the VPD estimations based on data without RH did not perform as well as those for Toreadora (Table 3; Figure 3).

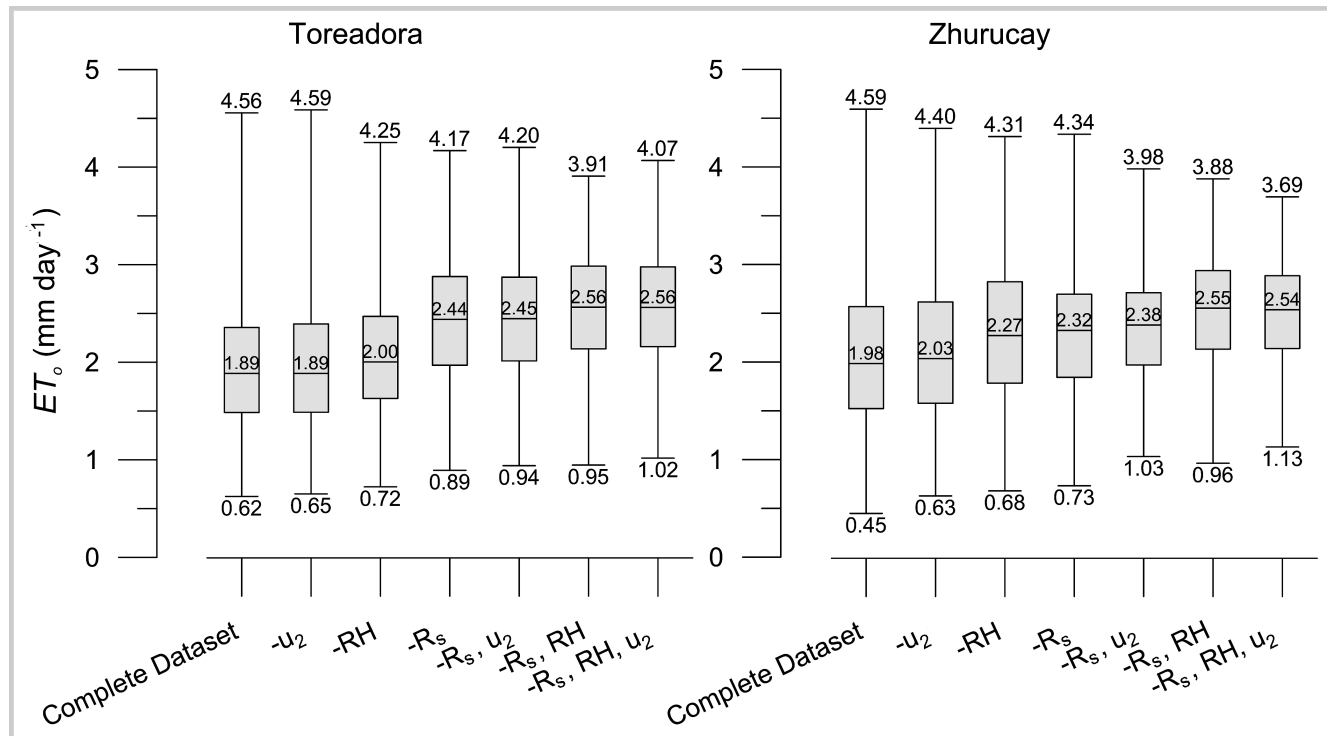
Bar charts showing MBE for the 6 cases of estimated variables are presented in Figure 5. Clearly, calculations are excellent if only wind speed data are missing. But this figure reveals an interesting dichotomy. During days with low ET_o , calculations based on each of the different cases overestimated ET_o . However, during days when ET_o exceeded 3 mm, the same calculations underestimated ET_o . The magnitude of under- or overestimation varied according to which variables were missing, consistent with the patterns discussed previously.

TABLE 3 Quality of ET_o calculations for the 6 cases of missing variables analyzed and for the Hargreaves method.^{a)}

	Toreadora			Zhurucay		
	MBE (mm day ⁻¹)	%MBE	RMSE (mm day ⁻¹)	MBE (mm day ⁻¹)	%MBE	RMSE (mm day ⁻¹)
– u_2	0.02	1.63	0.06	0.04	4.21	0.10
–RH	0.10	7.17	0.17	0.23	14.95	0.30
– R_s	0.41	24.73	0.53	0.19	14.22	0.36
– R_s , u_2	0.44	26.72	0.66	0.25	20.51	0.44
– R_s , RH	0.51	31.50	0.71	0.40	28.55	0.57
– R_s , RH, u_2	0.53	32.87	0.73	0.39	29.72	0.60
Hargreaves	0.26	18.69	0.50	0.25	22.15	0.54

^{a)} u_2 = wind speed at 2 m height; RH = relative humidity; R_s = solar radiation; MBE = mean bias error; %MBE = percentual mean bias error; RMSE = root mean square error.

FIGURE 3 Boxplots showing daily ET_o calculations for the Toreadora and Zhurucay sites, based on each of the 6 cases of incomplete data, compared with calculations based on complete data sets. Each box lies between the 0.25 and 0.75 quartiles, and the central line is the median. The whiskers indicate the range of the data within the minimum and maximum values.



Discussion

Analyzing previous work on the subject, we found that the results were quite good for a Bulgaria site (Popova et al 2006) but mixed for other locations. In general, a lack of wind speed data was not a major source of error in the humid climates, but it was in the semiarid climate. For RH, a dichotomy was observed: lack of RH data leads to overestimation of ET_o in humid climates and to underestimation in semiarid climates. Finally, when the model was used to estimate R_s on the basis of maximum and minimum temperatures, it worked poorly for humid conditions but yielded quite good results for semiarid conditions.

Our study is the first to comprehensively evaluate the effects of substituting estimates for missing data in calculations of ET_o in the Andean wet páramo. We found that if the only missing variable was wind speed data, calculations of ET_o were excellent. For this case, we used the global average of 2 m s^{-1} (Allen et al 1998), which is very close to the average wind speed at the Toreadora site (2.3 m s^{-1}). Interestingly, using the global average wind speed at the Zhurucay site also worked well, even though the actual average at this location was 3.6 m s^{-1} . This would suggest that ET_o calculations may not be very sensitive to wind speed in cold humid climates, such as that of the wet páramo. Sentelhas et al (2010), working in

the Great Lakes region of Canada, also obtained good estimates of ET_o in the absence of wind speed data (they used data from a nearby weather station). In contrast, in the semiarid climate of Tunisia (Jabloun and Sahli 2008), ET_o predictions made without actual measurements of wind speed were poor. In arid and semiarid climates, wind speed is clearly an important determinant of ET_o because of the importance of the aerodynamic term under these dry and high wind speed conditions (Garcia et al 2004).

With the FAO 56 method, RH data are required for calculating actual vapor pressure (e_a). In the absence of RH information, e_a is estimated on the basis of minimum temperature. The problem with using this method for humid climates is that condensation occurs during the night, which leads to an overestimation of VPD (Allen et al 1998) and a resultant overestimation of ET_o —as indeed we observed at our sites. Calculations for the Zhurucay site were less accurate than those for the Toreadora site (Table 3), because the higher RH at Zhurucay (Table 1) led to a greater overestimation of VPD. Sentelhas et al (2010) had similar findings at their Canadian sites: In the absence of RH data, ET_o was overestimated when the FAO 56 method was used. In contrast, in Tunisia (Jabloun and Sahli 2008), ET_o was underestimated when RH data were missing. This is because in arid climates the air is not saturated at

FIGURE 4 Daily and annual ET_o at the Toreadora site (10 days running average) for the complete data set and the 6 cases of incomplete data.

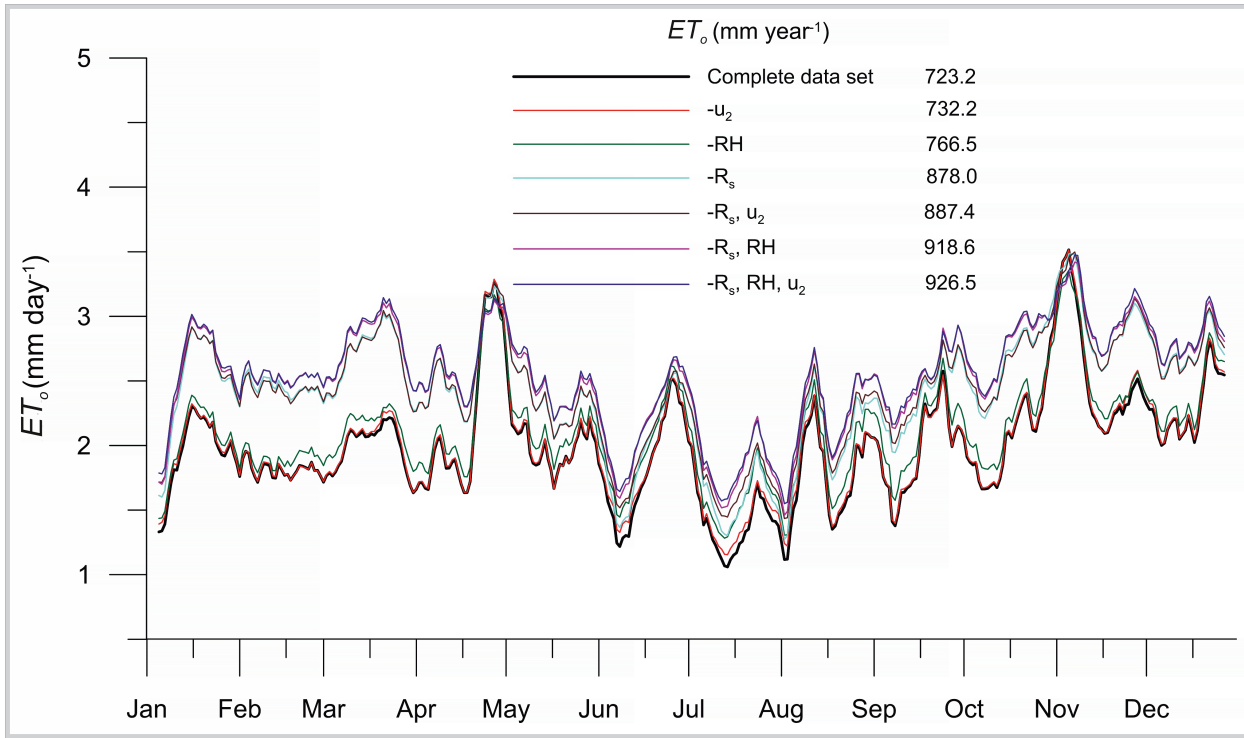
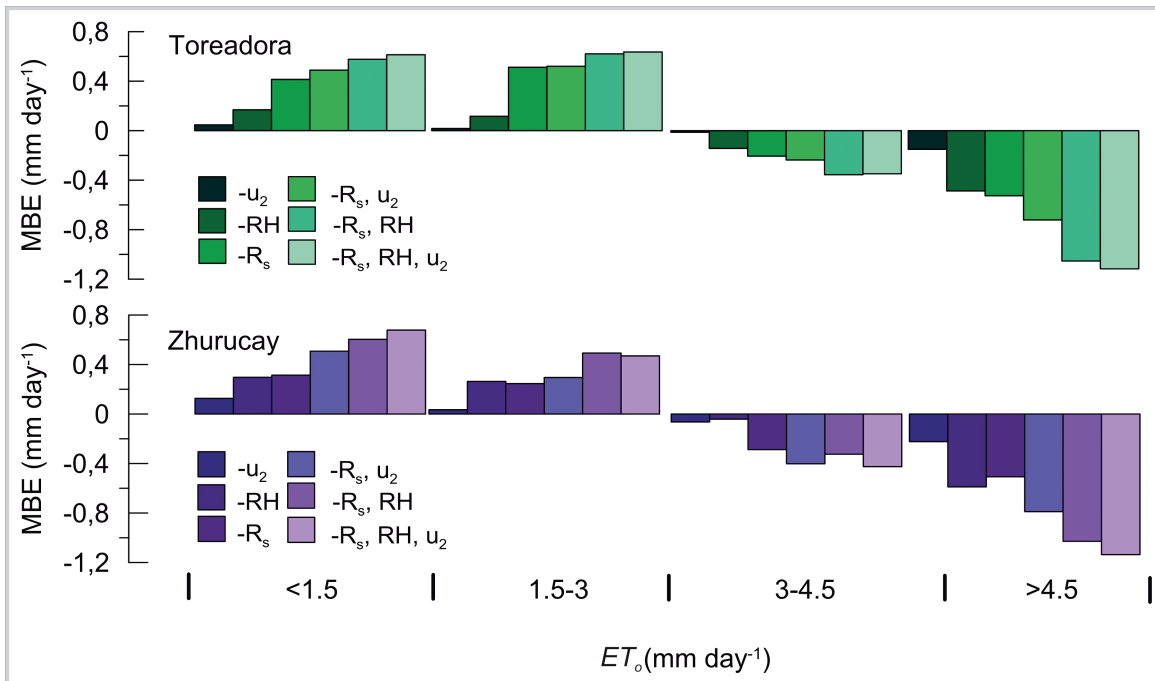


FIGURE 5 Mean bias error for different rates of daily ET_o for the Toreadora and Zhurucay sites. The 6 bars in each group represent the 6 cases of incomplete meteorological data, and each group corresponds to an ET_o range.



minimum temperature and condensation does not necessarily occur, which leads to underestimation of VPD and hence underestimation of ET_o .

Finally, we found that R_s data are extremely important for calculating ET_o in the wet *páramo* of southern Ecuador. This has been observed in Canada as well (Sentelhas et al 2010), where calculations done without R_s data yielded the maximum error. For both our wet *páramo* locations, calculations of ET_o made without R_s yielded high error values; although the result was poor at Toreadora, it was acceptable at Zhurucay (Table 3). Because of lower cloud cover, average daily R_s is higher at Zhurucay (13.90 MJ m^{-2}) than at Toreadora (12.13 MJ m^{-2}). The higher values observed at Zhurucay are closer to the average of estimated values of around $16 \text{ MJ m}^{-2} \text{ day}^{-1}$ obtained at both sites. Likewise, Sentelhas et al (2010) found that when actual R_s is lower than $20 \text{ MJ m}^{-2} \text{ day}^{-1}$, the FAO method led to systematic overestimation of this variable. These results for cold and humid conditions contrast with those of the study carried out in Tunisia (Jabloun and Sahli 2008), where calculations made without measured R_s data yielded the lowest MBE.

When we evaluated the effects on the ET_o calculations of the 3 combinations of missing variables ($-R_s$ and $-u_2$; $-RH$ and $-R_s$; and $-RH$, $-R_s$, and $-u_2$), all the estimations were poor. The least accurate estimates were found when all 3— RH , R_s , and u_2 —were missing, as has been shown in previous studies (Popova et al 2006; Jabloun and Sahli 2008; Trajkovic and Kolakovic 2009b; Sentelhas et al 2010; Kwon and Choi 2011). Next in line was the combination with both R_s and RH missing. However, when both R_s and u_2 were missing, the results were not significantly different from those obtained when only R_s was missing, which strengthens the hypothesis that ET_o calculations are not very sensitive to wind speed in this climate. These findings are almost identical to those of Sentelhas et al (2010) in Canada.

When incomplete data are used to calculate ET_o for high-elevation conditions, the full range of ET_o is not captured (Figure 3). We believe there are 2 primary reasons for this:

- At these elevations, ET_o is at its maximum under clear-sky conditions, when R_s is exceptionally high. R_s was underestimated under clear-sky conditions, likely because the method is temperature based and was developed for more temperate and lower-elevation regions.
- The method did not capture the low ET_o periods that occur under cloudy conditions and very high RH . Under these conditions, the method's procedures for estimating data overestimate both R_s and VPD.

We also found that results were better from May to September than for the other months of the year (Figure 4). During these months, the use of estimated values for missing data coincided better with calculations based on the complete data set. May to September is the

period for which R_s estimates are the best. Additional information on the annual cycle of R_s , its estimation, and why estimates are more accurate during this time of the year is given in *Supplemental material*, Appendix S1: (<http://dx.doi.org/10.1659/MRD-JOURNAL-D-15-0024.S1>).

Our evaluation of the Hargreaves method showed that it overestimated ET_o as it usually does under humid conditions (Gelcer et al 2010). For the case when only temperature data were available, it performed slightly better than the FAO 56 procedure (Table 3) but still yielded a poor result. These findings are consistent with those of Sentelhas et al (2010) in Canada, Igbadun et al (2006) in Tanzania, and Fooladmand and Haghghat (2007) in Iran. In contrast, the FAO 56 method was found to be superior in Bulgaria (Popova et al 2006) and Bolivia (Garcia et al 2004). Clearly the application of the FAO 56 method for wet *páramo* landscapes—as well as that of other more simple approaches—needs to be further investigated.

Conclusions

Our study provides a comprehensive analysis of how well ET_o can be calculated for the wet *páramo* of southern Ecuador if data for one or more meteorological variables are missing. For this landscape, high-quality meteorological data are rarely available, and for this reason it is especially crucial to understand to what extent ET_o calculations are dependent on such data. We found that of all of the variables, wind speed is the least important and that excellent ET_o estimates can be made using the global average for wind speed. RH data are more important than wind speed, and the most important variable, according to our results, is R_s . This study demonstrates the importance of long-term collection of high-quality meteorological data, which will make it possible to develop new algorithms and calibrate the existing ones for calculating ET_o in the high-elevation Andes.

The study findings have not only improved our understanding of the accuracy of ET_o estimates when data are incomplete, but in particular we now know that without actual RH and R_s data, ET_o will be poorly estimated. We can conclude, therefore, that for the wet *páramo*, more extensive climate monitoring is an urgent need, as is the development of alternative techniques for estimating values for missing variables.

Given the similarities between our results and those found by Sentelhas et al (2010), who also studied the FAO 56 method in a cold, humid climate, we expect that these findings are transferable to other high-mountain regions with a cold, humid climate. However, we recognize that there is also a need for similar studies in different Andean ecosystems such as the dry *páramo*, the *puna*, and the *altiplano*.

ACKNOWLEDGMENTS

The authors are thankful to the Ecuadorian Secretary of Higher Education, Science, Technology and Innovation, the Research Office of the University of Cuenca, and Corporación Eléctrica del Ecuador CELEC EP-Hidropaute for funding this study (Grant No. PIC-11-715). We are grateful to the Ecuadorian Fulbright Commission for providing support for B.W. The authors acknowledge the staff of

the Loma Larga project, Empreas de Telefonía, Agua Potable y Alcantarillado ETAPA-Parque Nacional Cajas, and the Comunidad de Chumblín for their logistics support and facilities during data collection. Special thanks are due to the staff and students who contributed to the meteorological monitoring.

REFERENCES

- Ababaei B.** 2014. Are weather generators robust tools to study daily reference evapotranspiration and irrigation requirement? *Water Resources Management* 28(4):915–932.
- Allen RG.** 1996. Assessing integrity of weather data for reference evapotranspiration estimation. *Journal of Irrigation and Drainage Engineering* 122(2):97–106.
- Allen RG, Jensen ME, Wright JL, Burman RD.** 1989. Operational estimates of reference evapotranspiration. *Agronomy Journal* 81(4):650–662.
- Allen RG, Pereira L, Raes D, Smith M.** 1998. *Crop Evapotranspiration: Guidelines for Computing Crop Water Requirements*. FAO Irrigation and Drainage Paper 56. Rome, Italy: Food and Agriculture Organisation.
- Annandale J, Jovanovic N, Benadé N, Allen R.** 2002. Software for missing data error analysis of Penman-Monteith reference evapotranspiration. *Irrigation Science* 21(2):57–67.
- Becker A, Bugmann H.** 1997. *Predicting Global Change Impacts on Mountain Hydrology and Ecology: Integrated Catchment Hydrology I, Altitudinal Gradient Studies. Workshop Report*. International Geosphere-Biosphere Programme (IGBP) Report 43. Stockholm, Sweden: IGBP.
- Beniston M.** 2006. Mountain weather and climate: A general overview and a focus on climatic change in the Alps. *Hydrobiologia* 562(1):3–16.
- Buytaert W, Céleri R, Bièvre B De, Cisneros F, Wyseure G, Decker J, Hofstede R.** 2006. Human impact on the hydrology of the Andean páramos. *Earth-Science Reviews* 79(1–2):53–72.
- Buytaert W, Iniguez V, Céleri R, Bièvre B De, Wyseure G, Deckers J.** 2006. Analysis of the water balance of small páramo catchments in south Ecuador. In: Krecek J, Haigh M, editors. *Environmental Role of Wetlands in Headwaters*. NATO Science Series IV: Earth and Environmental Series 63. Dordrecht, the Netherlands: Springer, pp 271–281.
- Céleri R, Feyen J.** 2009. The hydrology of tropical Andean ecosystems: Importance, knowledge status, and perspectives. *Mountain Research and Development* 29(4):350–355.
- De Bièvre B, Alvarado A, Timbe L, Céleri R, Feyen J.** 2003. Night irrigation reduction for water saving in medium-sized systems. *Journal of Irrigation and Drainage Engineering* 129(2):108–116.
- D’Odonico P, Laio F, Porporato A, Ridolfi L, Rinaldo A, Rodriguez-Iturbe I.** 2010. Ecohydrology of terrestrial ecosystems. *BioScience* 60(11):898–907.
- Droogers P, Allen RG.** 2002. Estimating reference evapotranspiration under inaccurate data conditions. *Irrigation and Drainage Systems* 16:33–45.
- Exner-Kittridge M, Rains M.** 2010. Case study on the accuracy and cost/effectiveness in simulating reference evapotranspiration in West-Central Florida. *Journal of Hydrologic Engineering* 15(9):696–703.
- Fisher JB, Whittaker RJ, Malhi Y.** 2011. ET come home: Potential evapotranspiration in geographical ecology. *Global Ecology and Biogeography* 20(1):1–18.
- Fooladmand HR, Haghghat M.** 2007. Spatial and temporal calibration of Hargreaves equation for calculating monthly ET_0 based on Penman-Monteith method. *Irrigation and Drainage* 449(May):439–449.
- García M, Raes D, Allen RG, Herbas C.** 2004. Dynamics of reference evapotranspiration in the Bolivian highlands (Altiplano). *Agricultural and Forest Meteorology* 125(1–2):67–82.
- Gelcer EM, Fraisse CW, Sentelhas PC.** 2010. Evaluation of methodologies to estimate reference evapotranspiration in Florida. *Proceedings of the Florida State Horticultural Society* 123(2007):189–195.
- Gocic M, Trajkovic S.** 2010. Software for estimating reference evapotranspiration using limited weather data. *Computers and Electronics in Agriculture* 71(2):158–162.
- Gong L, Xu C, Chen D, Halldin S, Chen Y.** 2006. Sensitivity of the Penman-Monteith reference evapotranspiration to key climatic variables in the Changjiang (Yangtze River) basin. *Journal of Hydrology* 329(3–4):620–629.
- Hargreaves GH, Samani Z.** 1985. Reference crop evapotranspiration from temperature. *Applied Engineering in Agriculture* 1(2):96–99.
- Hou L, Zou S, Xiao H, Yang Y.** 2013. Sensitivity of the reference evapotranspiration to key climatic variables during the growing season in the Ejina oasis northwest China. *SpringerPlus* 2(Suppl 1):S4. <http://www.biomedcentral.com/content/pdf/2193-1801-2-S1-S4.pdf>.
- Igbadun HE, Mahoo HF, Tarimo AKPR, Salim BA.** 2006. Performance of two temperature-based reference evapotranspiration models in the Mkoji sub-catchment in Tanzania. *Agricultural Engineering International* 8:1–19.
- Jabloun M, Sahli A.** 2008. Evaluation of FAO-56 methodology for estimating reference evapotranspiration using limited climatic data: Application to Tunisia. *Agricultural Water Management* 95(6):707–715.
- Jacovides CP, Kontoyiannis H.** 1995. Statistical procedures for the evaluation of evapotranspiration computing models. *Agricultural Water Management* 27(3–4):365–371.
- Kisi O, Cengiz TM.** 2013. Fuzzy genetic approach for estimating reference evapotranspiration of Turkey: Mediterranean region. *Water Resources Management* 27(10):3541–3553.
- Kollas C, Randin CF, Vitasse Y, Körner C.** 2014. How accurately can minimum temperatures at the cold limits of tree species be extrapolated from weather station data? *Agricultural and Forest Meteorology* 184:257–266.
- Kwon H, Choi M.** 2011. Error assessment of climate variables for FAO-56 reference evapotranspiration. *Meteorology and Atmospheric Physics* 112(1–2):81–90.
- Li Z, Zheng F-L, Liu W-Z.** 2012. Spatiotemporal characteristics of reference evapotranspiration during 1961–2009 and its projected changes during 2011–2099 on the Loess Plateau of China. *Agricultural and Forest Meteorology* 154–155:147–155.
- López-Urrea R, Martín de Santa Olalla F, Fabeiro C, Moratalla A.** 2006. Testing evapotranspiration equations using lysimeter observations in a semiarid climate. *Agricultural Water Management* 85(1–2):15–26.
- Martínez CJ, Asce AM, Thepadia M.** 2010. Estimating reference evapotranspiration with minimum data in Florida. *Journal of Irrigation and Drainage Engineering* 136(7):494–501.
- Maybeck M, Green P, Vörösmarty C.** 2011. A new typology for mountains and other relief classes: An application to global continental water resources and population distribution. *Mountain Research and Development* 21(1):34–45.
- Midgley GF, Hannah L, Millar D, Rutherford MC, Powrie LW.** 2002. Assessing the vulnerability of species richness to anthropogenic climate change in a biodiversity hotspot. *Global Ecology and Biogeography* 11(6):445–451.
- Popova Z, Kercheva M, Pereira L.** 2006. Validation of the FAO methodology for computing ET_0 with limited data. Application to south Bulgaria. *Irrigation and Drainage* 215:201–215.
- Rahimkhoob A, Behbahani MR, Fakheri J.** 2012. An evaluation of four reference evapotranspiration models in a subtropical climate. *Water Resources Management* 26(10):2867–2881.
- Senay GB, Asante K, Artan G.** 2009. Water balance dynamics in the Nile Basin. *Hydrological Processes* 3681(August):3675–3681.
- Sentelhas P, Gillespie T, Santos E.** 2010. Evaluation of FAO Penman-Monteith and alternative methods for estimating reference evapotranspiration with missing data in Southern Ontario, Canada. *Agricultural Water Management* 97(5):635–644.
- Stöckle C, Kjelgaard J, Bellocchi G.** 2004. Evaluation of estimated weather data for calculating Penman-Monteith reference crop evapotranspiration. *Irrigation Science* 23(1):39–46.
- Tabari H.** 2010. Evaluation of reference crop evapotranspiration equations in various climates. *Water Resources Management* 24(10):2311–2337.
- Trajkovic S, Kolakovic S.** 2009a. Evaluation of reference evapotranspiration equations under humid conditions. *Water Resources Management* 23(14):3057–3067.
- Trajkovic S, Kolakovic S.** 2009b. Estimating reference evapotranspiration using limited weather data. *Journal of Irrigation and Drainage Engineering* 135(4):443–449.
- Vázquez RF, Hampel H.** 2014. Prediction limits of a catchment hydrological model using different estimates of ET_p . *Journal of Hydrology* 513:216–228.
- Wohl E, Barros A, Brunsell N.** 2012. The hydrology of the humid tropics. *Nature Climate Change* 2(9):655–662.

- Xing Z, Chow L, Meng F-R, Rees HW, Steve L, Monteith J.** 2008. Validating evapotranspiration equations using Bowen ratio in New Brunswick, Maritime, Canada. *Sensors* 8(1):412–428.
- Xu J, Peng S, Ding J, Wei Q, Yu Y.** 2013. Evaluation and calibration of simple methods for daily reference evapotranspiration estimation in humid East China. *Archives of Agronomy and Soil Science* 59(6):845–858.
- Yoder RE, Odhiambo LO, Wright WC.** 2005. Evaluation of methods for estimating daily reference crop evapotranspiration at a site in the humid southeast United States. *Applied Engineering in Agriculture* 21(1994): 197–202.

Supplemental material

APPENDIX S1 The annual cycle of R_a and its influence on R_s estimates.

Found at DOI: <http://dx.doi.org/10.1659/MRD-JOURNAL-D-15-0024.S1> (100KB PDF).