

## **Ecology and management of the hyporheic zone: stream–groundwater interactions of running waters and their floodplains**

Authors: Boulton, Andrew J., Datry, Thibault, Kasahara, Tamao, Mutz, Michael, and Stanford, Jack A.

Source: Journal of the North American Benthological Society, 29(1) :  
26-40

Published By: Society for Freshwater Science

URL: <https://doi.org/10.1899/08-017.1>

---

BioOne Complete ([complete.BioOne.org](https://complete.BioOne.org)) is a full-text database of 200 subscribed and open-access titles in the biological, ecological, and environmental sciences published by nonprofit societies, associations, museums, institutions, and presses.

Your use of this PDF, the BioOne Complete website, and all posted and associated content indicates your acceptance of BioOne's Terms of Use, available at [www.bioone.org/terms-of-use](https://www.bioone.org/terms-of-use).

Usage of BioOne Complete content is strictly limited to personal, educational, and non - commercial use. Commercial inquiries or rights and permissions requests should be directed to the individual publisher as copyright holder.

---

BioOne sees sustainable scholarly publishing as an inherently collaborative enterprise connecting authors, nonprofit publishers, academic institutions, research libraries, and research funders in the common goal of maximizing access to critical research.

## Ecology and management of the hyporheic zone: stream–groundwater interactions of running waters and their floodplains

Andrew J. Boulton<sup>1,6</sup>, Thibault Datry<sup>2,7</sup>, Tamao Kasahara<sup>3,8</sup>,  
Michael Mutz<sup>4,9</sup>, AND Jack A. Stanford<sup>5,10</sup>

<sup>1</sup> Ecosystem Management, University of New England, Armidale, New South Wales, Australia, 2351

<sup>2</sup> Aquatic Ecosystem Biology, CEMAGREF-Lyon 3 bis quai Chauveau, F-69336 Lyon cedex 09, France

<sup>3</sup> Department of Watershed Sciences, Utah State University, 5210 Old Main Hill, Logan, Utah 84321 USA

<sup>4</sup> Department of Freshwater Conservation, Brandenburg University of Technology Cottbus, Seestraße 45, D-15526 Bad Saarow, Germany

<sup>5</sup> Flathead Lake Biological Station, The University of Montana, 32111 BioStation Lane, Polson, Montana, 59860 USA

**Abstract.** Over the last 25 y, stream ecosystem theory has expanded to include explicitly the vertical dimension of surface–groundwater linkages via the hyporheic zone and below alluvial floodplains. Hydrological exchange between the stream and hyporheic zone mediates transport of products from the biogeochemical activities within the sediments. *Hot-spots* of primary productivity in the surface stream often result from upwelling nutrient-rich water. Conversely, downwelling surface water supplies organic matter and dissolved O<sub>2</sub> to hyporheic invertebrates and microbes, enhancing hyporheic productivity. Many of the papers seminal to conceptual and empirical advances in hyporheic research have been published in *J-NABS*, reflecting stream benthologists' awareness of the relevance of processes and biota in the hyporheic zone. However, major research gaps remain. One is the need for further empirical data to test the predictions of several current conceptual frameworks that hypothesize conditions under which the hyporheic zone might be expected to contribute most to surface stream metabolism, especially in large rivers with shallow alluvial aquifers. A second is how to apply research findings about the functional significance of the hyporheic zone to river restoration and conservation. Many activities that restore or protect surface biota and habitats probably benefit hyporheic processes and fauna as well, but this prediction should be tested. Last, hyporheic exchange and the biogeochemical processes within the sediments occur across multiple hierarchical spatial scales, but we are yet to understand fully these interactions or to extrapolate successfully across scales. *J-NABS* should continue to play a significant role in publishing research on the hyporheic zone and extend the scope to include applications in river and floodplain management and restoration.

**Key words:** hyporheic, river restoration, hydrological exchange, alluvial aquifer, subsurface invertebrates, biogeochemical transformations, human impacts, hydrogeomorphology.

The scientific disciplines of stream ecology and benthology, aquatic biogeochemistry, hydrogeology, geomorphology, and hydrology have entwined over the last 25 y to advance our understanding of the roles

played by stream–groundwater interactions in the hyporheic zone, the saturated interstices below the stream bed and adjacent banks that contain some proportion of channel water (**White 1993**<sup>11</sup>). The hyporheic zone can be viewed as a benthic *dynamic ecotone* (Gibert et al. 1990 [Fig. 1], **Vervier et al. 1992**) where hydrological, ecological, and biogeochemical processes interact. These interactions influence key stream ecosystem processes, such as primary productivity and nutrient cycling, in the surface stream (see **Mulholland and Webster 2010**), and the sediments harbor microbes and invertebrates (Brunke and Gonser 1997; Fig. 1) and are used by some fish for spawning

<sup>6</sup> E-mail addresses: aboulton@une.edu.au

<sup>7</sup> thibault.datry@cemagref.fr

<sup>8</sup> tamao.kasahara@usu.edu

<sup>9</sup> m.mutz@tu-cottbus.de

<sup>10</sup> jack.stanford@umontana.edu

<sup>11</sup> Boldface indicates paper was published in *J-NABS*

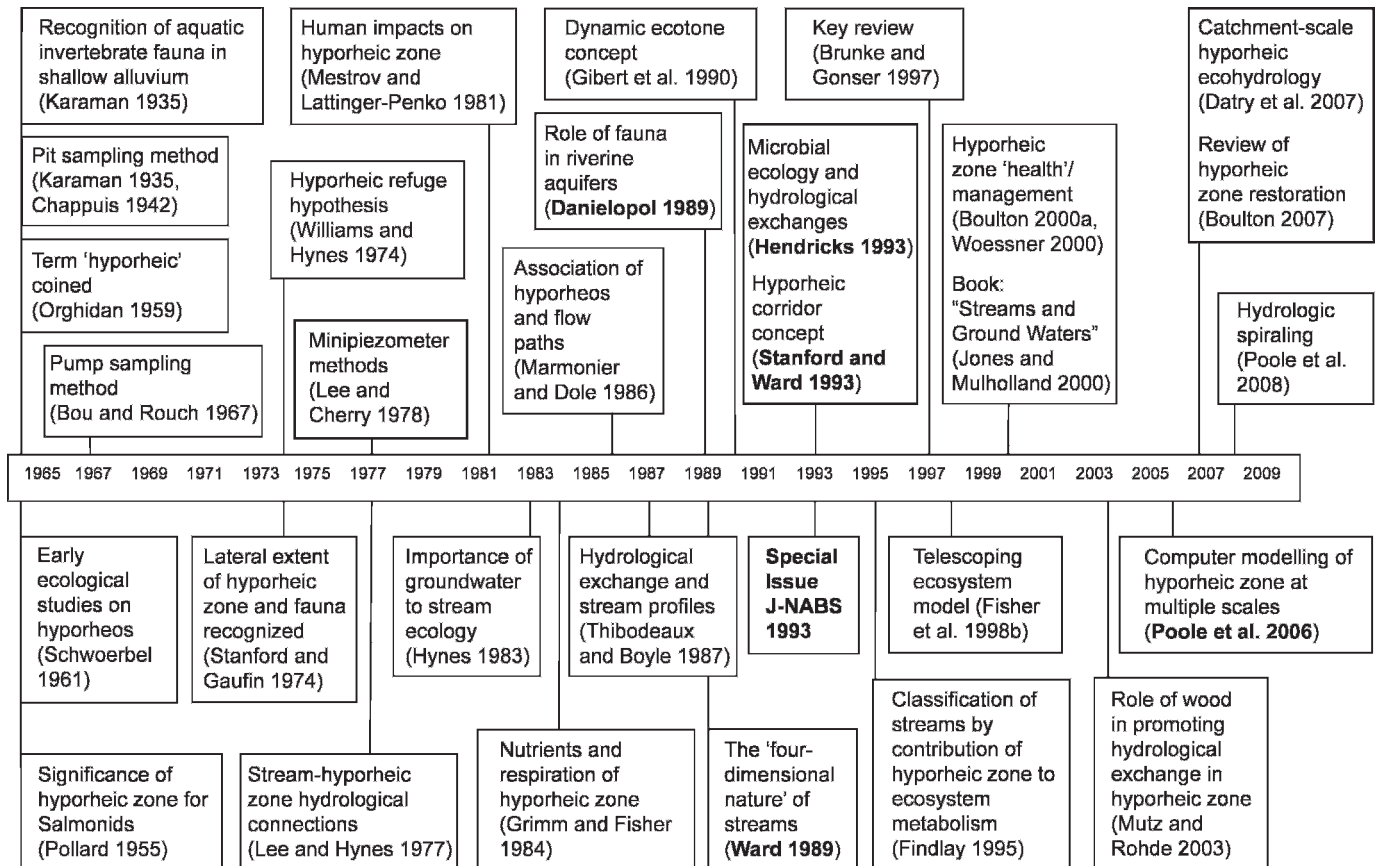


FIG. 1. A timeline of significant papers contributing to our understanding of the hyporheic zone and its functional significance. Boldface indicates papers published in *J-NABS*.

(Pollard 1955 [Fig. 1], Greig et al. 2007). Explicit incorporation of vertical hydrological connectivity in conceptual models of stream ecosystems lagged behind inclusion of the more obvious longitudinal and lateral linkages (e.g., River Continuum Concept; Flood Pulse Concept). However, several perceptive authors flagged the probable importance of the hyporheic zone early (e.g., Orghidan 1959 [Fig. 1], Schwoerbel 1964, Williams and Hynes 1974 [Fig. 1]), and its inclusion is now explicit in most contemporary stream ecosystem models (e.g., Thorp et al. 2006).

Our review explores significant advances, many described in seminal *J-NABS* papers, in our understanding of benthos and processes occurring in the hyporheic zone and their significance to lotic ecosystems. We review the development of relevant hydrological, biogeochemical, and ecological themes (Fig. 1) leading up to the 1993 special issue of *J-NABS*, before examining several aspects in detail as they relate to contemporary stream benthology, hydrology, and biogeochemistry. The relevance and application of this research to current management, conservation, and restoration of rivers comprise our conclusions

because human activities have impaired many of the functions of the hyporheic zone in rivers (Hancock 2002, Kasahara et al. 2009).

### A Dynamic Ecotone Where Stream and Ground Water Exchange

#### *Defining the hyporheic zone*

The hyporheic zone is popularly defined as the saturated interstitial spaces below the stream bed and adjacent stream banks that contain some proportion of channel water (White 1993). Early attempts to delineate the hyporheic zone were based on the distribution of subsurface and surface invertebrates. For example, Schwoerbel (1961; Fig. 1) considered the hyporheic zone as a 'middle zone' between channel waters above and true ground water below. Later authors tried to refine this definition further based on the vertical and lateral distribution of interstitial invertebrates (e.g., Stanford and Gaufin 1974 [Fig. 1], Williams and Hynes 1974, Williams 1989). However, the diversity of hyporheic zone types (e.g., perched, losing, or gaining reach configurations; Malard et al.

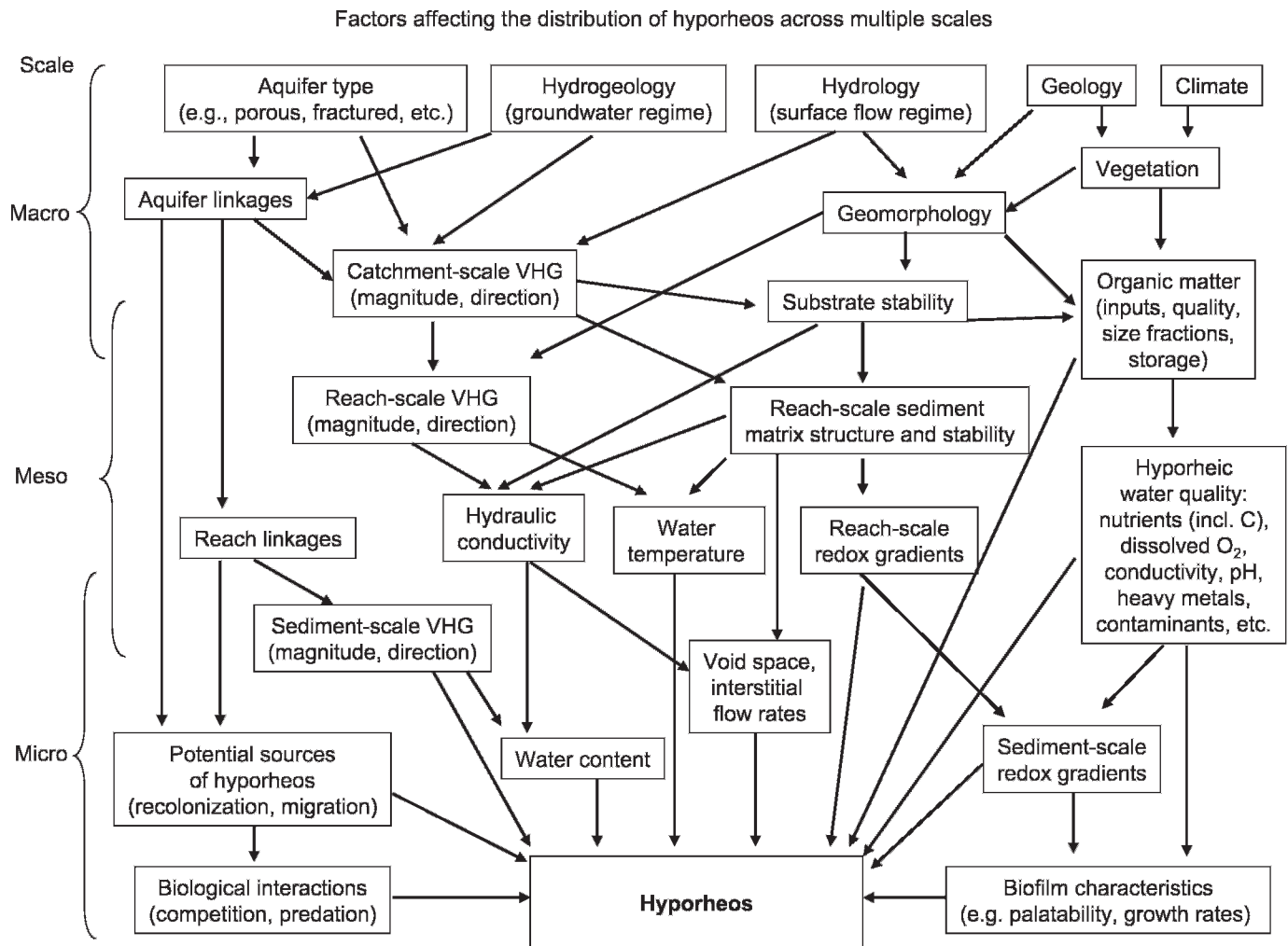


FIG. 2. Simplified diagram of the interactions among variables across 3 overlapping spatial scales (macro = landscape-catchment, meso = catchment-reach, micro = reach-sediment particle) that potentially influence the distribution and composition of the hyporheos.

2002) and the many other factors governing hyporheic invertebrate distribution (Fig. 2) confound any definition based solely on the distribution of mobile organisms (Danielopol 1989 [Fig. 1], White 1993).

This problem prompted alternative or complementary definitions based on physicochemical variables. Triska et al. (1989) used tracer studies to attempt to delineate the hyporheic zone based on chemical differences between channel and ground water. They defined the 'surface zone' as the region immediately beneath the bed that is chemically indistinguishable from channel water and contains >98% channel water. Beneath the surface zone, they recognized an 'interactive zone', containing 10 to 98% channel water, the depth of which indicates the hydrologic boundary of the stream. Although the arbitrariness of these categories and their static nature would later attract

criticism (Vervier et al. 1992), this early definition was a valuable application of hydrological criteria to help define the hyporheic zone using the very factor that drives many of the processes occurring within it.

#### *The dynamic ecotone concept*

One fruitful direction in describing the hyporheic zone has been the concept of its role as a *dynamic ecotone* (Gibert et al. 1990)—'dynamic' in that its boundaries fluctuate in response to sediment characteristics and hydrological exchange; 'ecotone' because it bounds the stream above and groundwater below. Gibert et al. (1990) highlighted the properties of elasticity, permeability, biodiversity, and connectivity of the hyporheic zone as governing its functional role in streams. Elasticity reflects the degree to which the

size of the hyporheic zone fluctuates, given sediment permeability and discharge characteristics. Permeability refers to the extent to which water and materials filter across the ecotone. The hyporheic zone acts as a mechanical filter mediated by the sediments and water flows, a biochemical filter controlled by biological and chemical processes, and a photic filter. Last, the connectivity that exists between the stream and underlying ground water extends laterally below banks and flood plains, sometimes for many meters (Stanford and Ward 1988).

In a key Perspectives paper in *J-NABS*, Vervier et al. (1992) extended this dynamic ecotone concept and explored how permeability influenced the capacity of the hyporheic zone to act as a sink for materials in the 2 adjacent systems. For example, coarse particulate organic matter buried in the hyporheic zone during floods (e.g., Metzler and Smock 1990) is temporarily removed from the surface system. However, because of biogeochemical activities in the hyporheic zone, transformed nutrients and fine particulate organic matter are liberated into the ground water and stream water depending on the direction and magnitude of vertical hydrological exchange. Vervier et al. (1992) concluded that influence of the hyporheic zone on the surface stream ecosystem depended on the elasticity, permeability, biodiversity, and connectivity of this dynamic ecotone; this conclusion was to become a focus of subsequent research on the functional significance of the hyporheic zone.

#### Where It Began: Discovery of Hyporheic Invertebrates

Although scientists had been aware for several centuries that many deep aquifers harbored aquatic invertebrates adapted for life in a lightless world (reviews in Gibert et al. 1994, Humphreys 2006), the discovery of invertebrates in saturated sediments below and alongside streams was comparatively recent. Digging pits in gravel bars along several European rivers and sieving the seepage yielded rich hauls of invertebrates of both surface benthos (e.g., mayflies, stoneflies, chironomid midges) and interstitial groundwater fauna, such as blind water mites, isopods, and amphipods (Karaman 1935, Chappuis 1942; Fig. 1). Soon after, the use of hand pumps to extract water from up to 1 m below the stream bed (Bou and Rouch 1967; Fig. 1) demonstrated that this fauna also occurred at substantial depths below the stream in the 'hyporheische Biotop', a term coined by Orghidan (1959) that literally translates into the 'under+flow' biotope. Subsequent studies (reviewed in Brunke and Gonser 1997, Boulton 2000b) have

demonstrated that the saturated sediments of many streams support a diverse invertebrate fauna, widely known as *hyporheos* (Williams and Hynes 1974). The discovery that the hyporheos could occur many hundreds of meters from the channel (Stanford and Gaufin 1974) was even more exciting and forced stream ecologists to think laterally when considering transfers of organic matter and energy in the hyporheic zone (Ward et al. 1998).

Orghidan (1959) also suggested that hyporheic sediments acted as a stable refuge for stream benthos, an idea developed further by Williams and Hynes (1974) in their 'hyporheic refuge hypothesis'. This hypothesis is tantalizing, but field and experimental evidence supporting it is equivocal (Palmer et al. 1992, Dole-Olivier et al. 1997, Olsen and Townsend 2005), and it remains an intriguing paradox worthy of further study. Colonization of the hyporheic zone by stream benthos is probably a mixture of active immigration and passive transport (Marmonier and Dole 1986 [Fig. 1], Boulton et al. 1991). Living space, dissolved O<sub>2</sub>, and food appear to be key resources influencing the distribution of the hyporheos (Brunke and Gonser 1997, Strayer et al. 1997), with the micro-scale supply of energy and O<sub>2</sub> mediated by meso-scale factors of sediment matrix structure and direction and strength of hydrological exchange with the surface stream (Fig. 2). The food base in the hyporheic zones of the Nyack Flood Plain (Middle Flathead River, Montana) is a complex microbial biofilm (Ellis et al. 1998); recent determination of its composition has identified entire suites of previously undescribed microbes (Lowell et al. 2009). Biological interactions, such as competition and predation, also are likely to govern the ecology of hyporheic invertebrates, but there seem to be no published studies of these interactions, despite the prevalence of hyporheic predators in many streams (Boulton 2000b).

By the end of the 1970s, benthic stream ecology was blossoming into a vibrant discipline integrating the biogeochemical implications of the hydrological links of the 'stream and its valley' (Hynes 1975) and associated ground waters (Lee and Hynes 1977; Fig. 1). Although efforts to define the boundaries of the hyporheic zone precisely were already foundering, its ecological significance to the surface stream was becoming evident (Williams and Hynes 1974). Benthic ecologists were looking for new tools to broaden their scientific horizons and became increasingly willing to embrace the related disciplines of hydrogeology and biogeochemistry. The time was ripe for innovative paradigms and novel methods.

### Integrating Stream–Groundwater Hydrology and Ecology: 1980s–1993

In 1983, Hynes published a seminal paper (Fig. 1) that urged stream ecologists to learn more about ground water because of its implications for understanding water balance and ecosystem metabolism in running waters, especially where groundwater is an important source of organic matter. He highlighted the need for stream ecologists to develop a wider appreciation of methods and paradigms in hydrogeology and promoted the textbook by Freeze and Cherry (1979) as a useful starting place. Concepts and field techniques in hydrogeology must have appeared particularly inaccessible to stream ecologists at this time. However, one early hydrogeological paper that probably played a crucial role in overcoming this hurdle was Tóth's (1963) idealized model of groundwater flow paths across the landscape. In this model, Tóth recognized 3 types of flow systems—local, intermediate, and regional—that could be superimposed hierarchically within a groundwater basin. Tóth (1963) conceptually illustrated the hierarchical connections between streams and groundwater systems, and the paper had significant consequences for later studies of stream–groundwater interactions (Hancock et al. 2005, Poole 2010).

Part of the problem in the uptake of hydrogeological approaches by stream ecologists apparently resulted from a mismatch of scales. Groundwater scientists tended to work at regional and catchment scales, whereas most stream ecologists in the 1980s were doing research at the stream-reach scale. The need for finer-scale methods that stream ecologists could use readily was soon filled by Lee and Cherry (1978; Fig. 1), 2 hydrogeologists who described simple, inexpensive methods to measure relevant streambed characteristics, such as vertical hydraulic gradient (VHG) and sediment hydraulic conductivities. Networks of small wells (minipiezometers) were used to measure VHG as a strong indicator of the potential direction and strength of vertical hydrological exchange at scales of  $10^{-1}$  to  $10^2$  m, and this method has been used widely (e.g., Boulton 1993, Pepin and Hauer 2002, Wright et al. 2005). Another seminal paper (Thibodeaux and Boyle 1987; Fig. 1) graphically illustrated how stream flow could affect VHG at a reach scale, prompting stream ecologists to assess hydraulic and sediment properties to understand benthic and interstitial nutrient dynamics (Grimm and Fisher 1984 [Fig. 1], Triska et al. 1990, Valett et al. 1990) and to seek associations with the distribution of the hyporheos (e.g., Marmonier and Dole 1986, Rouch 1988).

At the close of the 1980s, 2 significant *J-NABS* papers came from a special issue on global stream ecosystem theory, integrating hydrology and the ecology of the hyporheos. The 1<sup>st</sup>, Danielopol (1989), described long-term studies on the Danube alluvium in the Vienna Basin where aquifer water flow is largely governed by river flows. He proposed that the surficial deposits of the gravel bars along the Danube act as giant 'trickling filters' whose activity was promoted by fluctuations in water level, and he drew attention to the potential role of hyporheic invertebrates, such as the isopods *Proasellus*, in sustaining the permeability of the sediments through feeding and fecal pelletization. These suggestions led to experiments demonstrating the roles of hyporheic fauna in, for example, bioturbation (Mermillod-Blondin et al. 2000, Mermillod-Blondin and Rosenberg 2006) and N cycling (Marshall and Hall 2004).

The 2<sup>nd</sup> paper, Ward (1989), was a framework for lotic ecosystem theory that explicitly acknowledged the vertical dimension of stream ecosystems to include the hyporheic zone, elevating its significance to that of lateral and longitudinal dimensions. Ward (1989) added a 4<sup>th</sup> dimension, time, to account for temporal variations in the interactions across these 3 spatial dimensions and the role of disturbance in disrupting pathways along these dimensions (see Stanley et al. 2010). Subsequently, this framework has proven useful in ensuring that all 3 dimensions of the linkages of open ecosystems, such as streams, are fully incorporated into holistic studies of energy flow (e.g., Ward et al. 1998) and contemporary paradigms (e.g., Thorp et al. 2006).

#### *A timely special issue*

A NABS workshop in 1991 resulted in the 1993 *J-NABS* special issue "Perspectives of the Hyporheic Zone: Integrating Hydrology and Biology" (volume 12, issue 1), that was to have a major influence on hyporheic research. The issue opened with a description of the merger of 'population–community' studies of the hyporheic zone that focused on its role as habitat for invertebrates with 'process–functional' studies that viewed ecosystems from the perspective of interacting physical, chemical, and biological processes (Valett et al. 1993). To further set the stage, Bencala (1993) described a revised hydrological view of streams not as isolated 'pipes' but as multiple flow paths into and alongside the stream channel that serve as active bidirectional links. White's (1993) universal definition (discussed earlier) helped provide consistency in terminology, and his diagrams of cross-sectional and longitudinal models have become standard fare in papers reviewing the hyporheic zone.

Stanford and Ward (1993; Fig. 1) posed their 'hyporheic corridor concept', which portrays the stream as a series of dynamic convergences between surface and ground water that alternately expand and constrict because of geologic constraints along the valley. The pattern of hydrologic exchange at this whole-catchment scale is shaped by longitudinal changes in the width and depth of the alluvial sediments. Reach-scale control of surface primary and secondary production by hyporheic biogeochemical processes, which, in turn, determine surface stream nutrient concentrations at upwelling sites and influence processes in the riparian zone (see **Mulholland and Webster 2010**), was predicted. These reach-scale sequences were nested within the longitudinal continuum from headwaters to lowland rivers, which provided a catchment perspective for assessing the functional significance of the hyporheic zone to the surface stream ecosystem.

Other papers in the special issue exemplified an ecohydrological approach to understanding the functional significance of the hyporheic zone across a variety of river types (**Stanley and Boulton 1993**) and for microbial ecology (**Hendricks 1993**; Fig. 1). In a northern Michigan river, bacterial activity and production were enhanced in downwelling zones, whereas anaerobic conditions in upwelling zones promoted processes such as denitrification, ammonification, and sulfate reduction (**Hendricks 1993**). Experiments were advocated for improving our understanding of the driving variables (**Palmer 1993**), but relatively few have resulted (e.g., **Boulton and Foster 1998**, **Sliva and Williams 2005**), and scope exists for more. Apart from the practical problems of working within sediments under water, the chief difficulty seems to be successful extrapolation of conclusions drawn from experimental chambers (e.g., **Mermillod-Blondin et al. 2000**, **Marshall and Hall 2004**) to explain processes observed in complex hyporheic zones of rivers and streams. The special issue concluded by encouraging routine assessment of hydrological processes in future studies of the hyporheic zone (**Hakenkamp et al. 1993**), but the urgent need for technological advances in hydrology, tracer studies, and numerical modeling was already clear.

### **An Era of Technological Advances: 1993 to the Present**

#### *Hydrological exchanges at multiple scales in the hyporheic zone*

Exchanges of water between the stream and the hyporheic zone are driven primarily by pressure differences along surface-subsurface VHGs. Broad-

scale exchange arises from differences between the stream and the surrounding groundwater level, whereas small-scale hyporheic exchange is driven by the interaction of flow and channel features (**Elliott and Brooks 1997**; Fig. 3A). Channel features include discontinuities in slope, such as riffle-pool sequences (**Harvey and Bencala 1993**, **Kasahara and Hill 2006**), steps formed by log jams (**Lautz et al. 2006**), and river bends and meanders (**Wroblicky et al. 1998**, **Kasahara and Hill 2007**, **Cardenas 2009**). At a finer scale, they are irregularities in the stream bed, such as sediment ripples (**Thibodeaux and Boyle 1987**) or submerged stones or logs partly embedded in finer permeable sediments (**Wallace et al. 1995**), that obstruct and deflect the flow (Fig. 3B). Such irregularities produce pressure variations at the sediment-water interface that pump water into and out of the stream bed (**Elliott and Brooks 1997**, **Cardenas et al. 2004**).

The exchange of water in natural gravel-bed streams is typically complex, and turbulent stream flow induces variable inputs of stream water into near-surface regions of the bed (Fig. 3C) (**D'Angelo et al. 1993**). Saturated hydraulic conductivity of the sediments further controls the flux and depth of hyporheic exchange (**Storey et al. 2003**). At reach or larger scales, the geology of parent materials largely governs saturated hydraulic conductivity of alluvial sediments (**Morrice et al. 1997**), whereas at finer scales, nonuniform clogging (colmatation) by fines can be more important (**Packman and MacKay 2003**; Fig. 3B).

#### *Evolving technologies for measuring hyporheic exchange*

In the last 2 decades, hyporheic exchange across a range of scales has been characterized with tracer techniques and numerical hydrological modeling. Tracer techniques entail injection of specific chemical tracers or use of background chemical concentrations as natural tracers. Since the Stream Solute Workshop (1990), tracer injections have become a mainstream approach to quantifying rates of hyporheic exchange and nutrient processing. Analyses of 'breakthrough curves' from stream injection of a nonreactive solute tracer provide reach-averaged estimates of the relative size of the transient storage zone and exchange rate (**Bencala and Walters 1983**). To estimate nutrient retention, a conservative tracer and a nutrient are co-injected into the stream and uptake lengths (the average distance traveled by a solute) are calculated by comparing plateau concentrations of the 2 tracers (**Triska et al. 1989**). For instance, **Valett et al. (1996)** co-injected a conservative ( $\text{Br}^-$ ) and a biologically active tracer ( $\text{NO}_3^-$ -N) into streams in 3 headwater catch-

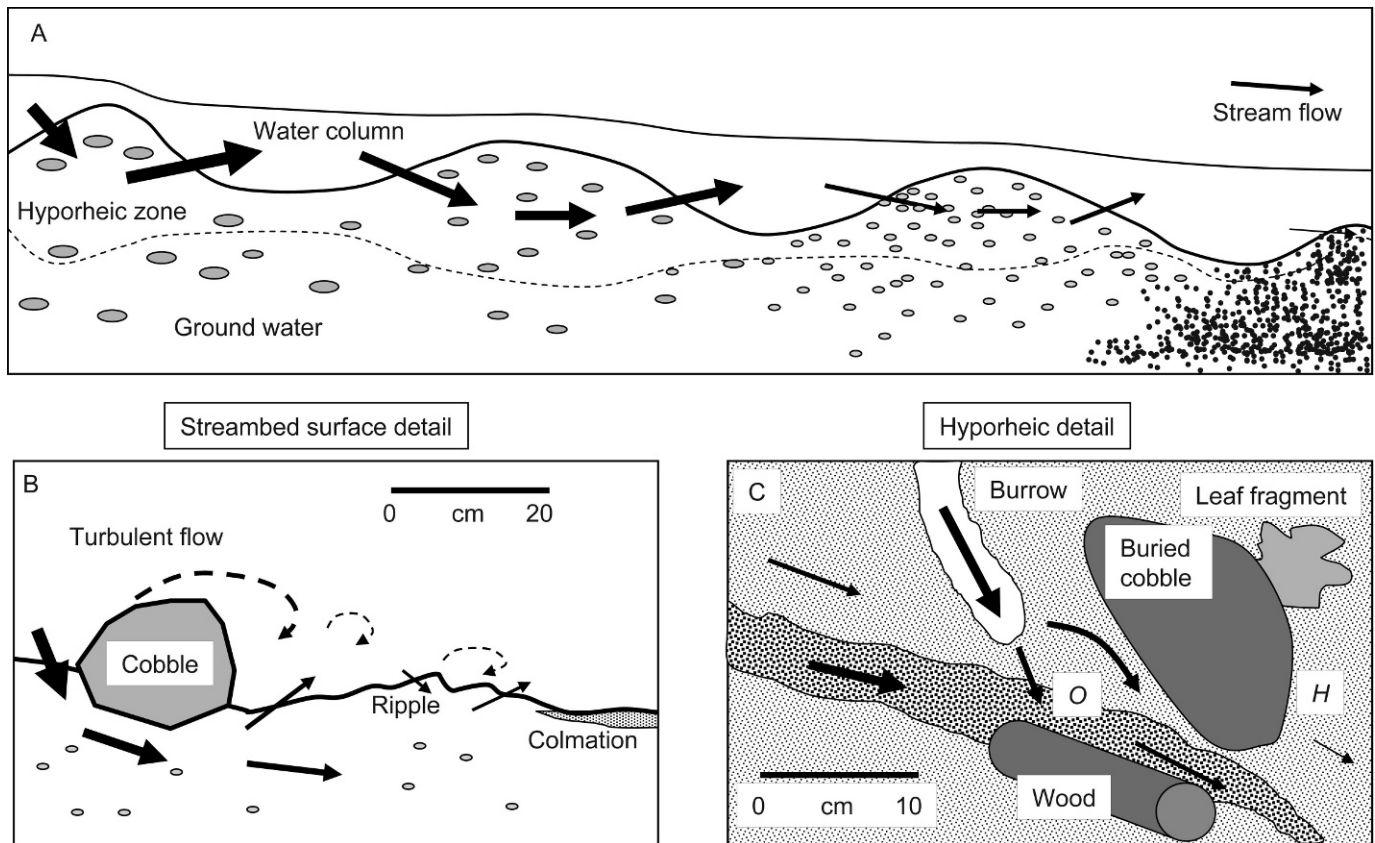


FIG. 3. The interactions of streambed topography and permeability, surface flow characteristics, distribution and size of sediments, and presence of large rocks or cobbles influence the location and extent of vertical hydraulic gradient (VHG) across a range of scales (multiple reaches) (A) and at the streambed surface (B) and within the bed (C), creating a shifting mosaic of conditions in the hyporheic zone. Arrow thickness represents magnitude of hyporheic exchange, broken line approximates groundwater table. In (C), O refers to oxygenated sediments, H refers to hypoxic regions.

ments with contrasting geology and hydraulic conductivities to study hyporheic nutrient retention. Hyporheic exchange increased, whereas  $\text{NO}_3^-$  uptake length decreased with increasing hydraulic conductivity.

Numerical hydrological modeling using hydrometric data collected from a network of wells and piezometers is another way to quantify hyporheic exchange (Harvey and Bencala 1993, Kasahara and Wondzell 2003). Wondzell and Swanson (1996a) used the distribution of hydraulic heads and saturated hydraulic conductivity measured from a network of wells and a groundwater flow model (MODFLOW) to quantify advective hyporheic flow and groundwater inflow in a gravel bar of a 4<sup>th</sup>-order mountain stream. The flux of hyporheic exchange quantified in this study also was used to understand N cycling within the reach (Wondzell and Swanson 1996b).

Transient storage models have been greatly refined in the last decade. The original form is the combination of 1-dimensional advection–dispersion equations

with 1<sup>st</sup>-order mass exchanges between the main channel and a transient storage zone (e.g., Morrice et al. 1997). Subsequent modifications have included accounting for unsteady stream discharge, incorporation of multiple transient storage zones, and inclusion of diffusive solute transfers between the channel and the hyporheic zone (Runkel et al. 1998, Choi et al. 2000, De Smedt 2007). Poole (2010) has extended numerical modeling approaches to describe hyporheic exchange across multiple spatial layers in 3 dimensions over time, an elegant development that illustrates the complex nonlinear links across diverse hyporheic habitat patches (Poole et al. 2006; Fig. 1).

#### Hydrological Exchange and Stream Ecosystem Processes: the Basis of Contemporary Hyporheic Zone Research

The potential for significant contributions from the hyporheic zone to whole-stream metabolism was first demonstrated by Grimm and Fisher (1984) in an



Arizonan desert stream. In this seminal study, rates of benthic, deep sediment, and whole-stream metabolism were assessed simultaneously in open-bottom chambers, closed sediment cores, and from change in dissolved O<sub>2</sub> concentrations between 2 stations along the stream. The results revealed that the hyporheic zone of this highly productive desert stream contributed 40 to 50% of total ecosystem respiration, and prompted Grimm and Fisher to suggest extension of the traditional 2-layer conceptual model of stream metabolism to include the contribution of the hyporheic zone. A decade later, Findlay (1995; Fig. 1) synthesised the early literature on surface-subsurface hydrological exchange and proposed a classification of streams based on the degree to which hyporheic zones contribute to their total metabolism. This classification reflected the relationship between the proportion of total discharge passing through the hyporheic zone and the rate of hyporheic metabolic processes. The greatest potential contribution of the hyporheic zone to total metabolism was hypothesised to occur when both hyporheic discharge and hyporheic metabolic activity are high. Findlay (1995) concluded that physical factors controlling interstitial velocities and pathways predominantly determined the functional significance of hyporheic metabolism to many whole stream ecosystems.

Following Findlay's (1995) paper, numerous studies confirmed that hyporheic metabolism can equal or far exceed metabolism at the stream bed (Mulholland et al. 1997, Naegeli and Uehlinger 1997, Battin et al. 2003). However, Craft et al. (2002) found that microbial productivity was insufficient to support invertebrate production in the hyporheic zone of the Flathead River in Montana, USA, a result suggesting that other metabolic processes, such as methanogenesis, might be contributing energy to higher trophic levels. The organic fuel for hyporheic metabolism can be dissolved organic C (DOC) from surface stream water or ground water (Jones et al. 1995) or from infiltration and burial of particulate organic matter from the surface stream (e.g., Metzler and Smock 1990, see also Tank et al. 2010).

#### *A landscape perspective—spatial mosaics and varying hydrology*

Several conceptual papers have extended Findlay's (1995) original framework, mainly by elaborating spatial and temporal aspects (Fisher et al. 1998a, Kaplan and Newbold 2000, Malard et al. 2002, Stanford et al. 2005). The result has been incorporation of empirical and theoretical evidence to demonstrate how the spatial arrangement of patches of surface-

subsurface exchange affects overall stream metabolism and heterogeneity in stream water variables, such as nutrient concentrations and water temperature. For example, Fisher et al. (1998a) proposed that the arrangement of sandbars and their associated hyporheic flow paths in a desert stream would govern stream-scale rates of N cycling. Earlier work had demonstrated that NO<sub>3</sub><sup>-</sup>-rich water upwelling at the end of hyporheic flowpaths promoted growth of green algae in the surface stream between floods (Grimm and Fisher 1989). As surface stream N becomes consumed, green algae are replaced by N-fixing cyanobacteria. Thus, a stream with numerous sandbars and active hyporheic zones will cycle N more rapidly than one with few sandbars and long stretches of surface stream where N is fixed rather than regenerated from the hyporheic zone.

Malard et al. (2002) built on the model by Fisher et al. (1998a) and sought to link the functional significance of the hyporheic zone with spatially well-defined stream structures at a landscape scale. In streams, a shifting mosaic of surface-subsurface exchange patches is produced by the heterogeneous arrangement of channel features, such as riffles and bars, and of areas of different grain sizes and sediment hydraulic conductivity. These patches vary in hyporheic discharge and flowpath length, and in turn, affect the type and intensity of metabolic processes. Such mixtures of patches of different sizes partly explain the heterogeneity of metabolic processes, which often combine the opposing processes of oxidation and reduction within a single spatial unit of a stream (even over a few millimeters).

Thus, the overall contribution to stream ecosystem processes by the hyporheic zone might be controlled by frequency and distribution of patch types. Alteration of the configuration of the patch mosaic by disturbances, such as seasonal or episodic floods (Stanley et al. 2010), would contribute to temporal heterogeneity. Because hyporheic metabolism is probably limited by supply of organic C or exhaustion of terminal electron acceptors from the surface stream, metabolic activity at the reach scale should be enhanced by the occurrence of many small patches with shorter hyporheic flow paths compared to few large patches (Malard et al. 2002). This hypothesis could be tested by manipulating the size, shape, and spatial arrangement of gravel bars, especially during stream restoration projects (see later).

#### *Hyporheic function at multiple scales*

Stanford and Ward (1993) already had set the stage for considering hyporheic processes at multiple

spatial scales with their conceptual model of how the structure of the hyporheic zone might change along a river. Integrating these multiple scales with Findlay's (1995) framework, Boulton et al. (1998) hypothesised that different variables might influence the functional significance of the hyporheic zone to streams at the sediment, reach, and catchment scales, and they sought hierarchical relationships among these controlling variables across scales. At the *sediment scale*, the main determinant of the functional significance of the hyporheic zone is grain size distribution because it governs bed permeability (Freeze and Cherry 1979) and affects the hydrological linkage with the surface stream and the supply of resources. Grain size distribution also influences organic matter accumulation, microbial abundance and activity, and interstitial dissolved O<sub>2</sub> concentrations (Strayer et al. 1997, Olsen and Townsend 2003), controlling potential rates of hyporheic metabolism.

At the *reach scale*, the scale at which most stream ecologists have studied the hyporheic zone, the principal driver appears to be hydrological exchange and discharge. The lengths of the hyporheic flow paths control the intensity and type of the metabolic processes, which in turn, create longitudinal gradients in the physicochemical environment along the flow paths with feedbacks to the rates and types of reach-scale metabolic processes (Boulton et al. 1998, Datry and Larned 2008). Extending this concept to the *catchment scale*, vertical and lateral components of stream and groundwater interactions and their variability are considered to be the principal variables driving the functional significance of the hyporheic zone to the surface stream (Boulton et al. 1998, Datry et al. 2008).

#### *Variable linkages across subsystems potentially affect processing length*

The Telescoping Ecosystem Model (TEM, Fisher et al. 1998b; Fig. 1), predicts how streams retain, transform, and transport matter among 4 subsystems: the surface stream, the hyporheic zone, the parafluvial zone, and the riparian zone. These 4 subsystems are cross-linked primarily by exchange of water. The hydrologic variable is 'flow path length', the distance travelled by a parcel of water in one subsystem before it enters another. 'Processing length' is defined as the average distance required to process a given amount of material, and summarizes flow path length and rates of the many processes contributing to transformation of a specific material.

Comparison of processing lengths between the hyporheic zone and surface stream illustrates their

relative significance and enables comparisons of the functional significance of the hyporheic zone across a range of stream ecosystems over time. The TEM postulates that whole-ecosystem efficiency and the significance of the subsystems are functions of the disturbance regime; processing length increases when disturbances disrupt a given subsystem. Processing length then decreases during subsequent successional change and recovery. Thus, processing lengths in the subsystems 'telescope' according to the severity of different disturbances, their linkages, and their rates of recovery. An exciting future direction in hyporheic research is to assess the applicability of this model in streams with different disturbance regimes and with different degrees of hydrological linkage across subsystems. Poole et al. (2008; Fig. 1) recently modelled riverine *hydrologic spiralling* to show the substantial control of the hyporheic zone on water and solute flux, a result that emphasizes differing roles of long and short hyporheic flow paths.

#### **Future Directions in Research on the Hyporheic Zone: Management Applications and River Restoration**

##### Streams and Ground Waters

In 2000, *Streams and Ground Waters*, edited by Jones and Mulholland (2000; Fig. 1), synthesised the state of research on stream-ground water interactions, and thereby provided a useful benchmark against which to judge advances in the last decade. One advance in this book was the extension of Findlay's (1995) conceptual model by Kaplan and Newbold (2000) who suggested a threshold of vertical exchange at which either all bioavailable organic matter is consumed or the capacity of the hyporheic zone to metabolize organic matter is reached. Thus, either vertical hyporheic exchange or the size of the hyporheic zone might act as the primary limiting factor on the significance of the hyporheic zone to whole-system metabolism. Whether such a threshold for the metabolism of bioavailable DOC is actually achieved in nature and whether a similar threshold exists for particulate organic C remains to be seen. Given the fundamental significance of C for stream ecosystems (Tank et al. 2010), this future research direction is important.

Despite the last 2 decades of hydrologic and biogeochemical research in the hyporheic zone, Findlay and Sobczak (2000) concluded that no quantitative framework yet exists that predicts where and when the hyporheic zone will play a major role in overall stream metabolism. We also still lack the ability to extrapolate metabolic data successfully from

the sediment or plot scale ( $<1\text{ m}^2$ ) up to reach or catchment scales; the spatial hierarchies proposed by Ward (1989) and Boulton et al. (1998) remain elusive. Progress is hampered by the need to combine costly metabolism studies with simultaneous measures of hydrology at appropriate scales and the consequent hydrological modelling. Meta-analysis of total stream metabolism budgets indicates that hyporheic zone contributions can range from 40 to  $>90\%$  (Battin et al. 2003) and that hyporheic size, residence time, and vertical discharge interact to govern hyporheic metabolism at sediment and reach scales (Fellows et al. 2001). Further empirical data spanning time and space are needed to clarify this relationship.

#### *Assessing the 'health' of the hyporheic zone*

Another new direction that has emerged since *Streams and Ground Waters* was published is the potential for assessing the health of the hyporheic zone in a manner equivalent to that used in surface waters. Ecologists and hydrologists have long been aware of the functional significance of the hyporheic zone to stream ecosystems and the importance of vertical hydrological exchange for maintaining biological integrity, but they have been slow to communicate these findings to river managers and policy developers (Boulton 2000a, 2007, Woessner 2000; Fig. 1). Despite widespread interest in the concept of stream health (Meyer 1997), the notion of hyporheic health has received little attention (Boulton et al. 2008).

Many human activities affect the hyporheic zone, either through disruption of the hydrological exchange pathways or via direct contamination (Mestrov and Lattinger-Penko 1981, Hancock 2002, Kasahara et al. 2009). Even exotic surface species might impair hyporheic zone function (Bickel and Closs 2008). Effective indicators of hyporheic health must be easy to measure, readily interpretable, relevant to societal values and uses of the hyporheic zone (Boulton et al. 2008), and suitably sensitive. Boulton (2000a) proposed measures of hydrological exchange, rates of interstitial biogeochemical activity, and the biodiversity of the hyporheos as 3 potential candidates. Using processing length from the TEM (Fisher et al. 1998b) as a functional measure of hyporheic health also might be feasible. However, adoption of these potential measures of hyporheic health currently is limited by a lack of baseline data and protocols (Hahn 2006).

#### *Hyporheic zone restoration*

Typically, river restoration focuses on surface systems and their longitudinal and lateral connections, whereas the vertical dimension has been largely

ignored (Ward et al. 2001, Boulton 2007). If an intact hyporheic zone underpins stream health in some streams, hyporheic restoration in reaches where the hyporheic zone is impacted by human activities is a logical direction for management applications. In-stream habitat enhancement projects often modify stream channel morphology to improve habitat structure (e.g., Lester et al. 2006, Crispell and Endreny 2009). These channel modifications increase bedform roughness, heterogeneity of hydraulic conductivity, near-bed turbulence, and channel sinuosity, all of which induce hyporheic exchange flow in natural streams. For example, logs across stream channels produce a stepped longitudinal channel profile that promotes hyporheic exchange (Wallace et al. 1995). In a flume study, introduction of natural quantities of wood doubled vertical hyporheic exchange and increased the magnitude of the hyporheic zone (Mutz et al. 2007), supporting the early proposition by Mutz and Rohde (2003; Fig. 1) that restoring natural levels of instream wood could enhance hyporheic exchange in impacted streams. Assessment of hyporheic restoration trajectories could be envisaged on a 2-dimensional plot of the twin main 'drivers' of sediment structure and VHG that seek to illustrate mechanisms of response (Kasahara et al. 2009); currently, restoration ecologists lack a simple model of the hyporheic zone to use as a basis for predicting responses to manipulation of the 2 key 'drivers'.

Future research to assess the success of such restoration at a catchment scale would also shed light on large-scale processes that influence hyporheic zone function. One ambitious experiment in river ecology would be to restore 3-dimensional connectivity in a large ( $\sim 50,000\text{ km}^2$ ) dewatered, revetted, and polluted river ecosystem from headwaters to mouth. Relevant steps could be: 1) model in 3 dimensions the natural and severed connectivity for the entire system (focusing on hyporheic exchange underpinning a healthy alluvial river ecosystem), 2) evaluate potential outcomes of 3-dimensional restoration to yield a scientifically logical and economically viable restoration strategy, 3) do the restoration, and 4) quantitatively evaluate the outcome.

#### *Conservation of the hyporheos and maintenance of hyporheic processes*

As early as 1989, Danielopol was calling for protection of alluvial aquifers and their fauna, but little heed seems to have been taken of his plea (Boulton et al. 2003). Like Strayer (2006), we urge a more holistic view of conservation efforts in rivers to protect surface and subsurface systems and their

fauna. Current inventories of the hyporheos of most streams are inadequate to identify rare or threatened species, but some assemblages of invertebrate taxa in the hyporheic zone are surprisingly diverse (Rouch and Danielopol 1997, Boulton 2000b) and should be considered in management decisions about water resource development in these areas (Boulton et al. 2003, see also **Strayer and Dudgeon 2010**). Even intermittent streams can contain a rich hyporheic biota (Datry et al. 2007 [Fig. 1], 2008). Intermittent reaches act as *temporal ecotones* between terrestrial and aquatic ecosystems and harbor a unique biota of aquatic, semiaquatic, and terrestrial taxa that contribute substantially to overall biodiversity. This biota, including the hyporheos, might be at risk from management practices that seek to increase flow permanence artificially (Datry et al. 2007), especially because the hyporheic zone can be a refuge from drying (**DiStefano et al. 2009**).

Large river floodplains and their aquifers and hyporheic zones are the most endangered landscapes on the planet (Tockner et al. 2008). Research, conservation, and management of surface and groundwater exchange processes in the context of the catchments of these large alluvial floodplain ecosystems are crucial (Stanford et al. 2005) and must be undertaken despite logistic difficulties, which are rapidly being overcome by new technologies and modelling and mapping methods (**Poole 2010**). Symposia and field-based workshops exploring application of these technologies to surface water-groundwater restoration strategies could focus on human activities, such as gravel mining and river regulation, that directly affect riverine and floodplain hyporheic zones.

### Conclusions

Many papers seminal to conceptual and empirical advances in the field of hyporheic research (Fig. 1) have been published in *J-NABS*, a fact that reflects the relevance of processes and biota in the hyporheic zone to stream benthologists. Most of this work has focused on hydrological and biogeochemical processes. Studies of the association of the hyporheos with environmental variables and hyporheic exchange still are being done, but increasingly, the focus of these studies is at the catchment rather than the reach scale, taking advantage of new technologies and modeling approaches.

One major need is for more empirical studies to test the predictions of the bevy of conceptual models and frameworks that have been proposed. In particular, studies that extend over multiple sites and spatial

scales and that encompass at least the full suite of hydrological extremes in a year will be valuable. Integration of hydrological and ecological variables is essential, and the recent advances in hydrological modeling and sampling technology will play key roles in this process. We also urge practical application of the research findings on the significance of the hyporheic zone to whole-stream ecosystem function, especially in river restoration and conservation. *J-NABS* is well placed to expand its scope to include more papers that integrate research and management in protecting and restoring rivers, and the social sciences of human communication and environmental education about the hyporheic zone are relevant in this context.

### Acknowledgements

We thank the organizers of this 25<sup>th</sup> Anniversary Issue for the chance to review some aspects of hyporheic research, a flow path of conceptual and empirical studies, many of which have upwelled in *J-NABS*. Our ideas have benefited from discussions with Richard Marchant, Pierre Marmonier, Marie-Jo Dole-Olivier, Maurie Valett, Emily Stanley, Stuart Fisher, Nancy Grimm, Dean Olsen, Greg Burrell, Peter Hancock, Cecile Claret, Sarah Mika, Darren Ryder, Steve Wondzell, Mike Scarsbrook, Florian Malard, Geoff Poole, and Scott Larned.

### Literature Cited

- BATTIN, T. J., L. A. KAPLAN, J. D. NEWBOLD, AND S. P. HENDRICKS. 2003. A mixing model analysis of stream solute dynamics and the contribution of a hyporheic zone to ecosystem function. *Freshwater Biology* 48:995–1014.
- BENCALA, K. E. 1993. A perspective on stream-catchment connections. *Journal of the North American Benthological Society* 12: 44–47.
- BENCALA, K. E., AND R. A. WALTERS. 1983. Simulation of solute transport in a mountain pool-and-riffle stream: a transient storage model. *Water Resources Research* 19:718–724.
- BICKEL, T. O., AND G. P. CLOSS. 2008. Impact of *Didymosphenia geminata* on hyporheic conditions in trout redds: reason for concern? *Marine and Freshwater Research* 59:1028–1033.
- BOU, C., AND R. ROUCH. 1967. Un nouveau champ de recherches sur la faune aquatique souterraine. *Comptes Rendus de l'Académie des Sciences de Paris* 265:369–370.
- BOULTON, A. J. 1993. Stream ecology and surface-hyporheic hydrologic exchange: implications, techniques and limitations. *Australian Journal of Marine and Freshwater Research* 44: 553–564.
- BOULTON, A. J. 2000a. River ecosystem health down under: assessing ecological condition in riverine groundwater zones in Australia. *Ecosystem Health* 6:108–118.
- BOULTON, A. J. 2000b. The subsurface macrofauna. Pages 337–362 in J. B. Jones and P. J. Mulholland (editors). *Streams and ground waters*. Academic Press, San Diego, California.
- BOULTON, A. J. 2007. Hyporheic rehabilitation in rivers: restoring vertical connectivity. *Freshwater Biology* 52:632–650.

- BOULTON, A. J., G. FENWICK, P. J. HANCOCK, AND M. S. HARVEY. 2008. Biodiversity, functional roles and ecosystem services of groundwater invertebrates. *Invertebrate Systematics* 22: 103–116.
- BOULTON, A. J., S. FINDLAY, P. MARMONIER, E. H. STANLEY, AND H. M. VALETT. 1998. The functional significance of the hyporheic zone in streams and rivers. *Annual Review of Ecology and Systematics* 29:59–81.
- BOULTON, A. J., AND J. G. FOSTER. 1998. Effects of buried leaf litter and vertical hydrologic exchange on hyporheic water chemistry and fauna in a gravel-bed river in northern New South Wales, Australia. *Freshwater Biology* 40:229–243.
- BOULTON, A. J., W. F. HUMPHREYS, AND S. M. EBERHARD. 2003. Imperilled subsurface waters in Australia: biodiversity, threatening processes and conservation. *Aquatic Ecosystem Health and Management* 6:41–54.
- BOULTON, A. J., S. E. STIBBE, N. B. GRIMM, AND S. G. FISHER. 1991. Invertebrate recolonization of small patches of defaunated hyporheic sediments in a Sonoran Desert stream. *Freshwater Biology* 26:267–278.
- BRUNKE, M., AND T. GONSER. 1997. The ecological significance of exchange processes between rivers and groundwater. *Freshwater Biology* 37:1–33.
- CARDENAS, M. B. 2009. Stream-aquifer interactions and hyporheic exchange in gaining and losing streams. *Water Resources Research* 45:W06429. doi:10.1029/2008WR007651.
- CARDENAS, M. B., J. L. WILSON, AND V. A. ZLOTNIK. 2004. Impact of heterogeneity, bed forms, and stream curvature on subchannel hyporheic exchange. *Water Resources Research* 40:W08307. doi:10.1029/2004WR003008.
- CHAPPUIS, P. A. 1942. Eine neue methode zur Untersuchung der Grundwasser-fauna. *Acta Scientiarum Mathematicarum et Naturalium* 6:3–7.
- CHOI, J., J. D. HARVEY, AND M. H. CONKLIN. 2000. Characterizing multiple timescales of stream and storage zone interactions that affect solute fate and transport in streams. *Water Resources Research* 36:1511–1518.
- CRAFT, J. A., J. A. STANFORD, AND M. PUSCH. 2002. Microbial respiration within a floodplain aquifer of a large gravel-bed river. *Freshwater Biology* 47:251–261.
- CRISPELL, J. K., AND T. A. ENDRENY. 2009. Hyporheic exchange flow around constructed in-channel structures and implications for restoration design. *Hydrological Processes* 23:1158–1168.
- D'ANGELO, D. J., J. R. WEBSTER, S. V. GREGORY, AND J. L. MEYER. 1993. Transient storage in Appalachian and Cascade mountain streams as related to hydraulic characteristics. *Journal of the North American Benthological Society* 12:223–235.
- DANIELOPOL, D. L. 1989. Groundwater fauna associated with riverine aquifers. *Journal of the North American Benthological Society* 8:18–35.
- DATRY, T., AND S. T. LARNED. 2008. River flow controls ecological processes and invertebrate assemblages in subsurface flow-paths of an ephemeral river reach. *Canadian Journal of Fisheries and Aquatic Sciences* 65:1532–1544.
- DATRY, T., S. T. LARNED, AND M. R. SCARSBROOK. 2007. Responses of hyporheic invertebrate assemblages to large-scale variation in flow permanence and surface-subsurface exchange. *Freshwater Biology* 52:1452–1462.
- DATRY, T., M. R. SCARSBROOK, S. T. LARNED, AND G. FENWICK. 2008. Lateral and longitudinal patterns within the stygoscape of an alluvial river corridor. *Fundamental and Applied Limnology* 171:335–347.
- DE SMEDT, F. 2007. Analytical solution and analysis of solute transport in rivers affected by diffusive transfer in the hyporheic zone. *Journal of Hydrology* 339:29–38.
- DI STEFANO, R. J., D. D. MAGOULICK, E. M. IMHOF, AND E. R. LARSON. 2009. Imperiled crayfishes use hyporheic zone during seasonal drying of an intermittent stream. *Journal of the North American Benthological Society* 28:142–152.
- DOLE-OLIVIER, M.-J., P. MARMONIER, AND J.-L. BEFFY. 1997. Response of invertebrates to lotic disturbance: is the hyporheic zone a patchy refugium? *Freshwater Biology* 37:257–276.
- ELLIOTT, A. H., AND A. H. BROOKS. 1997. Transfer of non-sorbing solutes to a stream bed with bed forms: laboratory experiments. *Water Resources Research* 33:137–151.
- ELLIS, B. K., J. A. STANFORD, AND J. V. WARD. 1998. Microbial assemblages and production in alluvial aquifers of the Flathead River, Montana, USA. *Journal of the North American Benthological Society* 17:382–402.
- FELLOWS, C. S., H. M. VALETT, AND C. N. DAHM. 2001. Whole-stream metabolism in two montane streams: contribution of the hyporheic zone. *Limnology and Oceanography* 46:523–531.
- FINDLAY, S. 1995. Importance of surface-subsurface exchange in stream ecosystems: the hyporheic zone. *Limnology and Oceanography* 40:159–164.
- FINDLAY, S., AND W. V. SOBCHAK. 2000. Microbial communities in hyporheic sediments. Pages 287–396 in J. B. Jones and P. J. Mulholland (editors). *Streams and ground waters*. Academic Press, San Diego, California.
- FISHER, S. G., N. B. GRIMM, E. MARTI, AND R. GOMEZ. 1998a. Hierarchy, spatial configuration and nutrient cycling in a desert stream. *Australian Journal of Ecology* 23:41–52.
- FISHER, S. G., N. B. GRIMM, E. MARTI, R. M. HOLMES, AND J. B. JONES. 1998b. Material spiralling in stream corridors: a telescoping ecosystem model. *Ecosystems* 1:19–34.
- FREEZE, R. A., AND J. A. CHERRY. 1979. *Groundwater*. Prentice-Hall, London, UK.
- GIBERT, J., D. A. DANIELOPOL, AND J. A. STANFORD. 1994. *Groundwater ecology*. Academic Press, San Diego, California.
- GIBERT, J., M.-J. DOLE-OLIVIER, P. MARMONIER, AND P. VERVIER. 1990. Surface water-groundwater ecotones. Pages 199–226 in R. J. Naiman and H. Décamps (editors). *The ecology and management of aquatic-terrestrial ecotones*. United Nations Educational, Scientific, and Cultural Organization, Paris and Parthenon Publishers, Carnforth, UK.
- GREIG, S. M., D. A. SEAR, AND P. A. CARLING. 2007. A review of factors influencing the availability of dissolved oxygen to incubating salmonid embryos. *Hydrological Processes* 21:323–334.
- GRIMM, N. B., AND S. G. FISHER. 1984. Exchange between interstitial and surface water: implications for stream metabolism and nutrient cycling. *Hydrobiologia* 111:219–228.
- GRIMM, N. B., AND S. G. FISHER. 1989. Stability of periphyton and macroinvertebrates to disturbance by flash floods in a desert stream. *Journal of the North American Benthological Society* 8: 293–307.
- HAHN, H. J. 2006. The GW-Fauna-Index: a first approach to a quantitative ecological assessment of groundwater habitats. *Limnologia* 36:119–137.
- HAKENKAMP, C. C., H. M. VALETT, AND A. J. BOULTON. 1993. Perspectives on the hyporheic zone: integrating hydrology and biology. Concluding remarks. *Journal of the North American Benthological Society* 12:94–99.
- HANCOCK, P. 2002. Human impacts on the stream-groundwater exchange zone. *Environmental Management* 29:761–781.
- HANCOCK, P. J., A. J. BOULTON, AND W. F. HUMPHREYS. 2005. Aquifer and hyporheic zones: towards an ecological understanding of groundwater. *Hydrogeology Journal* 13:98–111.
- HARVEY, J. W., AND K. E. BENCALA. 1993. The effect of streambed topography on surface-subsurface water exchange in mountain catchments. *Water Resources Research* 29:89–98.

- HENDRICKS, S. P. 1993. Microbial ecology of the hyporheic zone: a perspective integrating hydrology and biology. *Journal of the North American Benthological Society* 12:70–78.
- HUMPHREYS, W. F. 2006. Aquifers: the ultimate groundwater-dependent ecosystems. *Australian Journal of Botany* 54: 115–132.
- HYNES, H. B. N. 1975. The stream and its valley. *Verhandlungen der Internationalen Vereinigung für theoretische und angewandte Limnologie* 19:1–15.
- HYNES, H. B. N. 1983. Groundwater and stream ecology. *Hydrobiologia* 100:93–99.
- JONES, J. B., S. G. FISHER, AND N. B. GRIMM. 1995. Vertical hydrologic exchange and ecosystem metabolism in a Sonoran Desert stream. *Ecology* 76:942–952.
- JONES, J. B., AND P. J. MULHOLLAND (EDITORS). 2000. *Streams and ground waters*. Academic Press, San Diego, California.
- KAPLAN, L. A., AND J. D. NEWBOLD. 2000. Surface and subsurface dissolved organic carbon. Pages 237–258 in J. B. Jones and P. J. Mulholland (editors). *Streams and ground waters*. Academic Press, San Diego, California.
- KARAMAN, S. L. 1935. Die Fauna unterirdischer Gewässer Jugoslawiens. *Verhandlungen der Internationalen Vereinigung für theoretische und angewandte Limnologie* 7:46–53.
- KASAHARA, T., T. DATRY, M. MUTZ, AND A. J. BOULTON. 2009. Treating causes not symptoms: restoration of surface-groundwater interactions in rivers. *Marine and Freshwater Research* 60: 976–981. doi: 10.1017/MF09047.
- KASAHARA, T., AND A. R. HILL. 2006. Hyporheic exchange flows induced by constructed riffles and steps in lowland streams in southern Ontario, Canada. *Hydrological Processes* 20:4287–4305.
- KASAHARA, T., AND A. R. HILL. 2007. Instream restoration: its effects on lateral stream-subsurface water exchange in urban and agricultural streams in Southern Ontario. *River Research and Applications* 23:801–814.
- KASAHARA, T., AND S. M. WONDZELL. 2003. Geomorphic controls on hyporheic exchange flow in mountain streams. *Water Resources Research* 39:1005. doi: 10.1029/2002WR001386.
- LAUTZ, L. K., D. I. SIEGEL, AND R. L. BAUER. 2006. Impact of debris dams on hyporheic interaction along a semi-arid stream. *Hydrological Processes* 23:183–196.
- LEE, D. R., AND J. CHERRY. 1978. A field exercise on groundwater flow using seepage meters and mini-piezometers. *Journal of Geological Education* 27:6–10.
- LEE, D. R., AND H. B. N. HYNES. 1977. Identification of groundwater discharge zones in a reach of Hillman Creek in southern Ontario. *Water Pollution Research in Canada* 13:121–133.
- LESTER, R., W. WRIGHT, AND M. JONES-LENNON. 2006. Determining target loads of large and small wood for stream rehabilitation in high-rainfall agricultural regions of Victoria, Australia. *Ecological Engineering* 28:71–78.
- LOWELL, J. L., N. GORDON, D. ENGSTROM, J. A. STANFORD, W. E. HOLBEN, AND J. E. GANNON. 2009. Habitat heterogeneity and associated microbial community structure in a small-scale floodplain hyporheic flow path. *Microbial Ecology*. doi 10.1007/s00248-009-9525-9.
- MALARD, F., K. TOCKNER, M.-J. DOLE-OLIVIER, AND J. V. WARD. 2002. A landscape perspective of surface-subsurface hydrological exchanges in river corridors. *Freshwater Biology*. 47:621–640.
- MARMONIER, P., AND M.-J. DOLE. 1986. Les amphipodes des sédiments d'un bras court-circuité du Rhône: logique de répartition et réaction aux crues. *Sciences de l'Eau* 5:461–486.
- MARSHALL, M. C., AND R. O. HALL. 2004. Hyporheic invertebrates affect N cycling and respiration in stream sediment microcosms. *Journal of the North American Benthological Society* 23: 416–428.
- MERMILLOD-BLONDIN, F., M. CREUZÉ DES CHÂTELLIERS, M. GERINO, AND J. P. GAUDET. 2000. Testing the effect of *Limnodrilus* sp. (Oligochaeta, Tubificidae) on organic matter and nutrient processing in the hyporheic zone: a microcosm method. *Archiv für Hydrobiologie* 149:467–487.
- MERMILLOD-BLONDIN, F., AND R. ROSENBERG. 2006. Ecosystem engineering: the impact of bioturbation on biogeochemical processes in marine and freshwater benthic habitats. *Aquatic Sciences* 68:434–442.
- MESTROV, M., AND R. LATTINGER-PENKO. 1981. Investigation of the mutual influence between a polluted river and its hyporheic. *International Journal of Speleology* 11:159–171.
- METZLER, G. M., AND L. A. SMOCK. 1990. Storage and dynamics of subsurface detritus in a sand-bottomed stream. *Canadian Journal of Fisheries and Aquatic Sciences* 47:588–594.
- MEYER, J. L. 1997. Stream health: incorporating the human dimension to advance stream ecology. *Journal of the North American Benthological Society* 16:439–447.
- MORRICE, J. A., H. M. VALETT, C. N. DAHM, AND M. E. CAMPANA. 1997. Alluvial characteristics, groundwater-surface water exchange and hydrological retention in headwater streams. *Hydrological Processes* 11:253–267.
- MULHOLLAND, P. J., E. R. MARZOLF, J. R. WEBSTER, D. R. HAR, AND S. P. HENDRICKS. 1997. Evidence that hyporheic zones increase heterotrophic metabolism and phosphorus uptake in forest streams. *Limnology and Oceanography* 42:443–451.
- MULHOLLAND, P. J., AND J. R. WEBSTER. 2010. Nutrient dynamics in streams and the role of *J-NABS*. *Journal of the North American Benthological Society* 29:100–117.
- MUTZ, M., E. KALBUS, AND S. MEINECKE. 2007. Effect of instream wood on vertical water flux in low-energy sand bed flume experiments. *Water Resources Research* 43:W10424. doi:10.1029/2006WR005676.
- MUTZ, M., AND A. ROHDE. 2003. Processes of surface-subsurface water exchange in a low energy sand-bed stream. *Internationale Revue der gesamten Hydrobiologie* 88:90–303.
- NAEGELI, M. W., AND U. UEHLINGER. 1997. Contribution of the hyporheic zone to ecosystem metabolism in a prealpine gravel-bed river. *Journal of the North American Benthological Society* 16:794–804.
- OLSEN, D. A., AND C. R. TOWNSEND. 2003. Hyporheic community composition in a gravel-bed stream: influence of vertical hydrological exchange, sediment structure and physicochemistry. *Freshwater Biology* 48:1363–1378.
- OLSEN, D. A., AND C. R. TOWNSEND. 2005. Flood effects on invertebrates, sediments and particulate organic matter in the hyporheic zone of a gravel-bed stream. *Freshwater Biology* 50: 839–853.
- ORGHIDAN, T. 1959. Ein neuer Lebensraum des unterirdischen Wassers: der hyporheische Biotop. *Archiv für Hydrobiologie* 55:392–414.
- PACKMAN, A. I., AND J. S. MACKAY. 2003. Interplay of stream-subsurface exchange, clay particle deposition, and streambed evolution. *Water Resources Research* 39:1097. doi: 10.1029/2002WR001432.
- PALMER, M. A. 1993. Experimentation in the hyporheic zone: challenges and prospectus. *Journal of the North American Benthological Society* 12:84–93.
- PALMER, M. A., A. E. BELY, AND K. E. BERG. 1992. Response of invertebrates to lotic disturbance: a test of the hyporheic refuge hypothesis. *Oecologia (Berlin)* 89:182–194.
- PEPIN, D. M., AND F. R. HAUER. 2002. Benthic responses to groundwater-surface water exchange in 2 alluvial rivers in northwestern Montana. *Journal of the North American Benthological Society* 21:370–383.

- POLLARD, R. A. 1955. Measuring seepage through salmon spawning gravel. *Journal of the Fisheries Research Board of Canada* 12: 706-741.
- POOLE, G. C. 2010. Stream hydrogeomorphology as a physical science basis for advances in stream ecology. *Journal of the North American Benthological Society* 29:12-25.
- POOLE, G. C., S. J. O'DANIEL, K. L. JONES, W. W. WOESSNER, E. S. BERNHARDT, A. M. HELTON, J. A. STANFORD, B. R. BOER, AND T. J. BEECHIE. 2008. Hydrologic spiraling: the role of multiple flow paths in stream ecosystems. *River Research and Applications* 24:1018-1031.
- POOLE, G. C., J. A. STANFORD, S. W. RUNNING, AND C. A. FRISSELL. 2006. Multiscale geomorphic drivers of groundwater flow paths: subsurface hydrologic dynamics and hyporheic habitat diversity. *Journal of the North American Benthological Society* 25: 288-303.
- ROUCH, R. 1988. Sur la répartition spatiale des Crustacés dans le sous-écoulement d'un ruisseau des Pyrénées. *Annales de Limnologie* 24:213-234.
- ROUCH, R., AND D. L. DANIELOPOL. 1997. Species richness of microcrustacea in subterranean freshwater habitats. Comparative analysis and approximate evaluation. *Internationale Revue der gesamten Hydrobiologie* 82:121-145.
- RUNKEL, R. L., D. M. MCKNIGHT, AND E. D. ANDREWS. 1998. Analysis of transient storage subject to unsteady flow: diel flow variation in an Antarctic stream. *Journal of the North American Benthological Society* 17:145-154.
- SCHWOERBEL, J. 1961. Über die Lebensbedingungen und die Besiedlung des hyporheischen Lebensraumes. *Archiv für Hydrobiologie Supplement* 25:182-214.
- SCHWOERBEL, J. 1964. Die Wassermilben (Hydrachnellae und Limnolhalacaridae) als Indikatoren einer biozonotischen Gliederung von Breg und Brigach sowie der obersten Donau. *Archiv für Hydrobiologie Supplement* 27:386-417.
- SLIVA, L., AND D. D. WILLIAMS. 2005. Responses of hyporheic meiofauna to habitat manipulation. *Hydrobiologia* 548:217-232.
- STANFORD, J. A., AND A. R. GAUFIN. 1974. Hyporheic communities of two Montana rivers. *Science* 185:700-702.
- STANFORD, J. A., M. S. LORANG, AND F. R. HAUER. 2005. The shifting habitat mosaic of river ecosystems. *Verhandlungen der Internationalen Vereinigung für theoretische und angewandte Limnologie* 29:123-136.
- STANFORD, J. A., AND J. V. WARD. 1988. The hyporheic habitat of river ecosystems. *Nature* 335:64-66.
- STANFORD, J. A., AND J. V. WARD. 1993. An ecosystem perspective of alluvial rivers: connectivity and the hyporheic corridor. *Journal of the North American Benthological Society* 12:48-60.
- STANLEY, E. H., AND A. J. BOULTON. 1993. Hydrology and the distribution of hyporheos: perspectives from a mesic river and a desert stream. *Journal of the North American Benthological Society* 12:79-83.
- STANLEY, E. H., S. M. POWERS, AND N. R. LOTTIG. 2010. The evolving legacy of disturbance in stream ecology: concepts, contributions, and coming challenges. *Journal of the North American Benthological Society* 29:67-83.
- STOREY, R. G., K. W. F. HOWARD, AND D. D. WILLIAMS. 2003. Factors controlling riffle-scale hyporheic exchange flows and their seasonal changes in a gaining stream: a three-dimensional groundwater flow model. *Water Resources Research* 39:1034. doi: 10.1029/20021367.
- STRAYER, D. L. 2006. Challenges for freshwater invertebrate conservation. *Journal of the North American Benthological Society* 25:271-287.
- STRAYER, D. L., AND D. DUDGEON. 2010. Freshwater biodiversity conservation: recent progress and future challenges. *Journal of the North American Benthological Society* 29:344-358.
- STRAYER, D. L., S. E. MAY, P. NIELSEN, W. WOLLHEIM, AND S. HAUSAM. 1997. Oxygen, organic matter, and sediment granulometry as controls on hyporheic animal communities. *Archiv für Hydrobiologie* 140:131-144.
- STREAM SOLUTE WORKSHOP. 1990. Concepts and methods for assessing solute dynamics in stream ecosystems. *Journal of the North American Benthological Society* 9:95-119.
- TANK, J. L., E. J. ROSI-MARSHALL, N. A. GRIFFITHS, S. A. ENTREKIN, AND M. L. STEPHEN. 2010. A review of allochthonous organic matter dynamics and metabolism in streams. *Journal of the North American Benthological Society* 29:118-146.
- THIBODEAUX, L. J., AND J. D. BOYLE. 1987. Bedform-generated convective transport in bottom sediment. *Nature* 325:341-343.
- THORP, J. H., M. C. THOMS, AND M. D. DELONG. 2006. The riverine ecosystem synthesis: biocomplexity in river networks across space and time. *River Research and Applications* 22:123-147.
- TOCKNER, K., S. E. BUNN, C. GORDON, R. J. NAIMAN, G. P. QUINN, AND J. A. STANFORD. 2008. Flood plains: critically threatened ecosystems. Pages 45-61 in N. Polunin (editor). *Aquatic ecosystems: trends and global prospects*. Cambridge University Press, Cambridge, UK.
- TOTH, J. 1963. A theoretical analysis of groundwater flow in small drainage basins. *Journal of Geophysical Research* 68:4785-4812.
- TRISKA, F. J., V. C. KENNEDY, AND R. J. AVANZINO. 1989. Retention and transport of nutrients in a third-order stream in northwestern California: hyporheic processes. *Ecology* 70:1893-1905.
- TRISKA, F. J., V. C. KENNEDY, R. J. AVANZINO, G. W. ZELLWEGER, AND K. E. BENCALA. 1990. In situ retention-transport response to nitrate loading and storm discharge in a 3<sup>rd</sup>-order stream. *Journal of the North American Benthological Society* 9:229-239.
- VALETT, H. M., S. G. FISHER, AND E. H. STANLEY. 1990. Physical and chemical characteristics of the hyporheic zone of a Sonoran Desert stream. *Journal of the North American Benthological Society* 9:201-215.
- VALETT, H. M., C. HAKENKAMP, AND A. J. BOULTON. 1993. Perspectives on the hyporheic zone: integrating hydrology and biology. Introduction. *Journal of the North American Benthological Society* 12:40-43.
- VALETT, H. M., J. A. MORRICE, C. N. DAHM, AND M. E. CAMPANA. 1996. Parent lithology, surface-groundwater exchange, and nitrate retention in headwater streams. *Limnology and Oceanography* 41:333-345.
- VERVIER, P., J. GIBERT, P. MARMONIER, AND M.-J. DOLE-OLIVIER. 1992. A perspective on the permeability of the surface freshwater-groundwater ecotone. *Journal of the North American Benthological Society* 11:93-102.
- WALLACE, J. B., J. R. WEBSTER, AND J. L. MEYER. 1995. Influence of log additions on physical and biotic characteristics of a mountain stream. *Canadian Journal of Fisheries and Aquatic Sciences* 52: 2120-2137.
- WARD, J. V. 1989. The four dimensional nature of lotic ecosystems. *Journal of the North American Benthological Society* 8:2-8.
- WARD, J. V., G. BRETSCCHKO, M. BRUNKE, D. DANIELOPOL, J. GIBERT, T. GONSER, AND A. G. HILDREW. 1998. The boundaries of river systems: the metazoan perspective. *Freshwater Biology* 40: 531-569.
- WARD, J. V., K. TOCKNER, U. UEHLINGER, AND F. MALARD. 2001. Understanding natural patterns and processes in river corridors as the basis for effective river restoration. *Regulated Rivers: Research and Management* 17:311-323.

- WHITE, D. S. 1993. Perspectives on defining and delineating hyporheic zones. *Journal of the North American Benthological Society* 12:61–69.
- WILLIAMS, D. D. 1989. Towards a biological and chemical definition of the hyporheic zone in two Canadian rivers. *Freshwater Biology* 22:189–208.
- WILLIAMS, D. D., AND H. B. N. HYNES. 1974. The occurrence of benthos deep in the substratum of a stream. *Freshwater Biology* 4: 233–256.
- WOESSNER, W. W. 2000. Stream and fluvial plain ground-water interactions: rescaling hydrogeologic thought. *Ground Water* 38:423–429.
- WONDZELL, S. M., AND F. J. SWANSON. 1996a. Seasonal and storm dynamics of the hyporheic zone of a 4<sup>th</sup>-order mountain stream. I: Hydrological processes. *Journal of the North American Benthological Society* 15:3–19.
- WONDZELL, S. M., AND F. J. SWANSON. 1996b. Seasonal and storm dynamics of the hyporheic zone of a 4<sup>th</sup>-order mountain stream. II: Nutrient cycling. *Journal of the North American Benthological Society* 15:20–34.
- WRIGHT, K. K., C. V. BAXTER, AND J. J. LI. 2005. Restricted hyporheic exchange in an alluvial river system: implications for theory and management. *Journal of the North American Benthological Society* 24:447–460.
- WROBLICKY, G. J., M. E. CAMPANA, H. M. VALETT, AND C. N. DAHM. 1998. Seasonal variation in surface-subsurface water exchange and lateral hyporheic area of two stream-aquifer systems. *Water Resources Research* 34:317–328.

*Received: 25 January 2008*  
*Accepted: 3 September 2009*