

Molecular Cloning and Expression of Prohormone Convertases PC1 and PC2 in the Pituitary Gland of the Bullfrog, *Rana catesbeiana*

Authors: Yaoi, Yuichi, Suzuki, Masakazu, Tomura, Hideaki, Kikuyama, Sakae, and Tanaka, Shigeyasu

Source: Zoological Science, 20(9) : 1139-1151

Published By: Zoological Society of Japan

URL: <https://doi.org/10.2108/zsj.20.1139>

The BioOne Digital Library (<https://bioone.org/>) provides worldwide distribution for more than 580 journals and eBooks from BioOne's community of over 150 nonprofit societies, research institutions, and university presses in the biological, ecological, and environmental sciences. The BioOne Digital Library encompasses the flagship aggregation BioOne Complete (<https://bioone.org/subscribe>), the BioOne Complete Archive (<https://bioone.org/archive>), and the BioOne eBooks program offerings ESA eBook Collection (<https://bioone.org/esa-ebooks>) and CSIRO Publishing BioSelect Collection (<https://bioone.org/csiro-ebooks>).

Your use of this PDF, the BioOne Digital Library, and all posted and associated content indicates your acceptance of BioOne's Terms of Use, available at www.bioone.org/terms-of-use.

Usage of BioOne Digital Library content is strictly limited to personal, educational, and non-commercial use. Commercial inquiries or rights and permissions requests should be directed to the individual publisher as copyright holder.

BioOne is an innovative nonprofit that sees sustainable scholarly publishing as an inherently collaborative enterprise connecting authors, nonprofit publishers, academic institutions, research libraries, and research funders in the common goal of maximizing access to critical research.

Molecular Cloning and Expression of Prohormone Convertases PC1 and PC2 in the Pituitary Gland of the Bullfrog, *Rana catesbeiana*

Yuichi Yaoi¹, Masakazu Suzuki¹, Hideaki Tomura²,
Sakae Kikuyama³ and Shigeyasu Tanaka^{1*}

¹Department of Biology, Faculty of Science, Shizuoka University, Shizuoka 422-8529, Japan

²Institute for Molecular and Cellular Regulation, Gunma University, Maebashi 371-8512, Japan

³Department of Biology, Faculty of Education, Waseda University, Tokyo 169-8050, Japan

ABSTRACT—We cloned cDNAs encoding PC1 and PC2 from a cDNA library constructed for the anterior pituitary gland of the bullfrog (*Rana catesbeiana*) and sequenced them. The bullfrog PC1 cDNA consisted of 2972 base pairs (bp) with an open reading frame of 2208 bp and encoded a protein of 736 amino acids, including a putative signal peptide of 26 amino acids. The protein showed a high homology to *R. ridibunda* PC1 (95.1%) and mammalian PC1 (72.6%). The bullfrog PC2 cDNA consisted of 2242 bp with an open reading frame of 1914 bp and encoded a protein of 638 amino acids, including a putative signal peptide of 23 amino acids. This protein showed a high homology to *R. ridibunda* PC2 (95.5%) and mammalian PC2 (84.8%). The catalytic triad of serine proteinases of the subtilisin family was found at Asp-168, His-209, and Ser-383 in the PC1 protein and at Asp-167, His-208, and Ser-384 in the PC2 protein. *In situ* hybridization staining revealed that PC2 mRNA was detected in corticotrope cells of the tadpoles, but not in those of the adults. In the adult, only PC1 mRNA was detected in the pars distalis but both PC1 and PC2 mRNAs were detected in the pars intermedia. The data also showed that PC1 mRNA was expressed in gonadotrope cells.

Key words: PC1, PC2, mRNA expression, pituitary gland, bullfrog

INTRODUCTION

In mammals, adrenocorticotropin (ACTH)-related peptides in corticotrope cells in the pars distalis and α -melanocortin-stimulating hormone (α -MSH)-related peptide in melanotrope cells in the pars intermedia are known to be produced post-traslationally by intracellular proteolytic cleavage of the large precursor molecule known as proopiomelanocortin (POMC). Nevertheless, the processing of POMC differs between these 2 lobes: in corticotrope cells, ACTH, β -lipotropic hormone (β -LPH), and a 16-kDa fragment are the major end products, whereas in melanotrope cells, ACTH is processed further into α -MSH and corticotropin-like intermediate peptide (CLIP), and β -LPH is processed almost completely into β -endorphin (Eipper and Mains, 1980; Rosa *et al.*, 1980; Chretien *et al.*, 1989). In mammals, 2 mammalian prohormone convertase, PC1 (also called PC3) and PC2, have been characterized by cloning and sequencing of

their cDNA (Seidah *et al.*, 1990, 1991; Smeekens *et al.*, 1990, 1991; Hakes *et al.*, 1991). In the pituitary, PC1 is expressed in both the pars distalis and intermedia and cleaves POMC mainly at the paired basic sites flanking the ACTH sequence, whereas PC2 was expressed mainly in the pars intermedia and cleaved POMC in concert with PC1 to yield joining peptide, α -MSH, and β -endorphin (for review see, Seidah and Chretien, 1992). The proteolytic processing of POMC in the pars intermedia of amphibians is essentially the same as that in the mammalian pars intermedia and is considered to be different from POMC processing in the corticotrope cells in the pars distalis. In the anuran amphibian pituitary gland, the presence of PC1 and PC2 has been demonstrated immunohistochemically (Kurabuchi and Tanaka, 1997). In the pars distalis, however, immunoreactivity of the convertases showed a different pattern among the anuran amphibians examined: either PC1 or PC2 was found in the corticotrope cells in several species, whereas both PC1 and PC2 were observed in the corticotrope cells in *R. brevipoda porosa*; although PC2-immunopositive cells did not express α -MSH (Kurabuchi and Tanaka, 1997).

* Corresponding author: Tel. +81-54-238-4783;
FAX. +81-54-238-0986.
E-mail: sbstana@ipc.shizuoka.ac.jp

Immunohistochemistry often yields also results because the antibody used recognizes pseudo epitopes in different molecules. Therefore, to define expression of a molecule, the mRNA of the molecule should also be detected using the *in situ* hybridization method.

However, cloning of cDNAs encoding PC1 and PC2 and/or determination of the primary structure of amphibian PC1 and PC2 have been accomplished only in *Xenopus laevis* (PC2: Braks *et al.*, 1992) and *R. ridibunda* (PC1: Gangnon *et al.*, 1999, PC2: Vieau *et al.*, 1998). Therefore, we sought to obtain cDNAs encoding the bullfrog PC1 and PC2 to deduce the amino acid sequence of these two proteins. Using each cDNA as a probe, we examined the expression of the mRNAs in the pituitaries by *in situ* hybridization.

MATERIALS AND METHODS

Animals

Adult male bullfrogs (*Rana catesbeiana*) and tadpoles at stage VII (Taylor and Kollros, 1946) were purchased from Ouchi (Misato, Japan). They were acclimated under normal laboratory conditions for at least 1 week before use. The animals were fed pieces of porcine liver or boiled spinach twice a week. Pituitary glands dissected under anesthesia with MS-222 (Nacalai tesque, Kyoto, Japan) were used for histochemical examination and RT-PCR analysis. All animal experiments were in compliance with the Guide for Care and Use of Laboratory Animals established by Shizuoka University.

Cloning of bullfrog PC1 and PC2

Total RNA was extracted from 86.2 µg of the anterior pituitaries of bullfrogs using TRIZOL RNA extraction reagent (Life Technologies, Inc., Rockville, MD), and then 5.0 µg polyadenylated RNA was separated from about 255 µg of the total RNA using Oligotex-dT30 super (Takara, Kyoto, Japan). We constructed a λZAP cDNA library (4.6×10⁵ pfu/µg of arms) from the polyadenylated RNA using a ZAP-cDNA synthesis kit and a Gigapack III Gold cloning kit (Stratagene, La Jolla, CA), in accordance with the manufacturer's instructions. Purified DNA from a bullfrog anterior pituitary cDNA library was amplified by the polymerase chain reaction (PCR) in a thermal cycler (ASTEC, Fukuoka, Japan). The procedure for the PCR amplification was an initial denaturation step of 95°C for 5 min followed by denaturation (94°C, 90 sec), annealing (54°C, 90 sec), and extension (72°C, 150 sec) for 30 cycles, using degenerate oligonucleotides (Sawady Technology, Tokyo, Japan) designed based on the conserved regions of PC1 and PC2 from other species. The sequences of sense (primer 1) and antisense (primer 2) primers were as follow: PC1 primer 1, 5'-TGGTAY(C/T)TTGM(A/C)R(A/G)AGAY(C/T)ACM(A/C)AG-3'; PC1 primer 2, 5'-GCN(A/C/G/T)GAK(G/T)GTK(G/T)CCH(A/C/T)GTR(A/G)TGB(C/G/T)GT-3'; PC2 primer 1, 5'-TAY(C/T)AGY(C/T)GCM(A/C)AGCTGGGG(B/C/G/T)CC-3'; PC2 primer 2, 5'-TGY(C/T)TGCAW(A/T)GTCY(C/T)CK(G/T)CCAD(A/G/T)GT-3'. The amplified PCR products were electrophoresed on a 2% agarose gel and the 754-bp fragment (the expected size based on the known *R. ridibunda* PC1 cDNA sequence) and the 440-bp fragment (the expected size based on the known *Rana ridibunda* PC2 cDNA sequence) were subcloned directly into the pGEM-3Z vector (Promega, Madison, WI) and sequenced. We synthesized DNA probes with sequences identical to those of the PCR products described above using a digoxigenin (DIG)-High Prime kit (Roche Mol. Biochem., Meylan, France) and used them to screen approximately 1.25×10⁵ plaques of the bullfrog cDNA library under high stringency hybridization. Five positive clones for PC1 and 2 positive clones for PC2 were obtained, puri-

fied by a second screening, and sequenced by using an ABI PRISM BigDye Terminator Cycle Sequencing Kit (PE Applied Biosystems, Foster City, CA, USA). The sequencing reactions were analyzed with an Applied Biosystems DNA sequencer model 377 (PE Applied Biosystems).

Protein sequence analysis

We used the ScanProsite (<http://kr.expasy.org/tools/scanprosite/>) to analyze the protein sequence.

RT-PCR of bullfrog tissues

The tissue expressions of PC1 and PC2 mRNAs were analyzed by RT-PCR. Using TRIZOL reagent, total RNA was prepared from various adult bullfrog organs (pars distalis, neurointermediate lobe, brain, heart, liver, pancreas, lung, kidney, spleen, stomach, intestine, testis, ovary, and skeletal muscle). After treatment of 20 µg of total RNA with DNase I (4 U; Takara), a 10-µg aliquot of the former was reverse-transcribed in 20 µl of reaction buffer containing a 1 mM concentration of each dNTP, 9.9 U of RAV-2 reverse transcriptase (Takara), 20 U of RNase inhibitor (Toyobo, Osaka, Japan), and 7.5 mM oligo-dT(19)primer (Life Technologies, Inc., Rockville, MD) at 42°C for 1 hr, and then at 52°C for 30 min. PCR was then performed by the same method, basically as described above, using the following homologous primers: PC1 sense, 5'-GTAGGAGGCATTTCGGATGTTA-3' (809-829 b); and antisense, 5'-GAAGATTGAGCCTTTTCCATTT-3' (994-1015 b); PC2 sense, 5'-TCTTCCACTTTAGCCTCTACAT-3' (1197-1218 b); and antisense, 5'-CTCTAGGGCTAATGCAAACA-3' (1333-1352 b). Bullfrog β-actin was used as an internal standard during detection of PC1 and PC2 mRNA expressions. The β-actin cDNA was amplified by using a set of primers designed to amplify a β-actin fragment of 96 bp (Yaoi *et al.*, 2003). The RT-PCR products were analyzed on a 2% agarose gel containing ethidium bromide (EtBr; 0.5 µg/ml) with Marker 6 (λ/Sty1 digest; Wako Pure Chemicals, Osaka, Japan) molecular weight markers. The gels were subsequently transferred onto a nylon membrane (Roche) and subjected to Southern blot analysis using bullfrog PC1 or PC2 cDNAs as probes.

In situ hybridization histochemistry

DIG-labeled antisense and sense cRNA probes were prepared from the full coding region of PC1 and PC2 cDNAs by *in vitro* transcription, as described previously (Saito *et al.*, 2002). Bullfrog pituitary glands were fixed with 4% paraformaldehyde (PFA) in 0.1M phosphate buffer, pH 7.4, overnight at 4°C. After fixation, the tissues were dehydrated through a graded alcohol series, cleared in methyl benzoate-celloidin, and embedded in Paraplast. Sections were cut at a 4-µm thickness and mounted on silane-coated slides. *In situ* hybridization was carried out according to a method described previously (Saito *et al.*, 2002). Briefly, deparaffinized sections were digested with 5 µg/ml proteinase K for 20 min, fixed in 4% PFA for 20 min, and then incubated with the DIG-labeled cRNA at 50°C for 15 hr. After hybridization, the sections were treated with 1 µg/ml RNase solution for 30 min and then incubated with alkaline phosphatase-conjugated sheep anti-DIG Fab antibody (Roche) for 15 hr. The label was detected with nitroblue tetrazolium chloride and 5-bromo-4-chloro-3-indolylphosphate (Roche).

Dual mRNA and protein staining

After the mRNA had been stained as described above, the sections were washed with PBS and incubated with guinea pig antibody against bullfrog POMC (Berghs *et al.*, 1997), rabbit anti-α-MSH (Tanaka and Kurosumi, 1986) or mouse monoclonal antibody against bullfrog LHβ (Park *et al.*, 1987) overnight, followed by Cy3-labeled donkey anti-guinea pig IgG, FITC-labeled donkey anti-rabbit IgG or FITC-labeled donkey anti-mouse IgG (Jackson ImmunoResearch, West Grove, PA) for 2 hr. The sections were washed with PBS, then mounted in PermaFluor (Immunon, Pittsburgh, PA), and

examined under an Olympus BX50 microscope equipped with a BX-epifluorescence attachment (Olympus Optical Co., Tokyo, Japan).

RESULTS

cDNA cloning of bullfrog PC1 and PC2

Fig. 1 shows the full cDNA sequence of bullfrog PC1

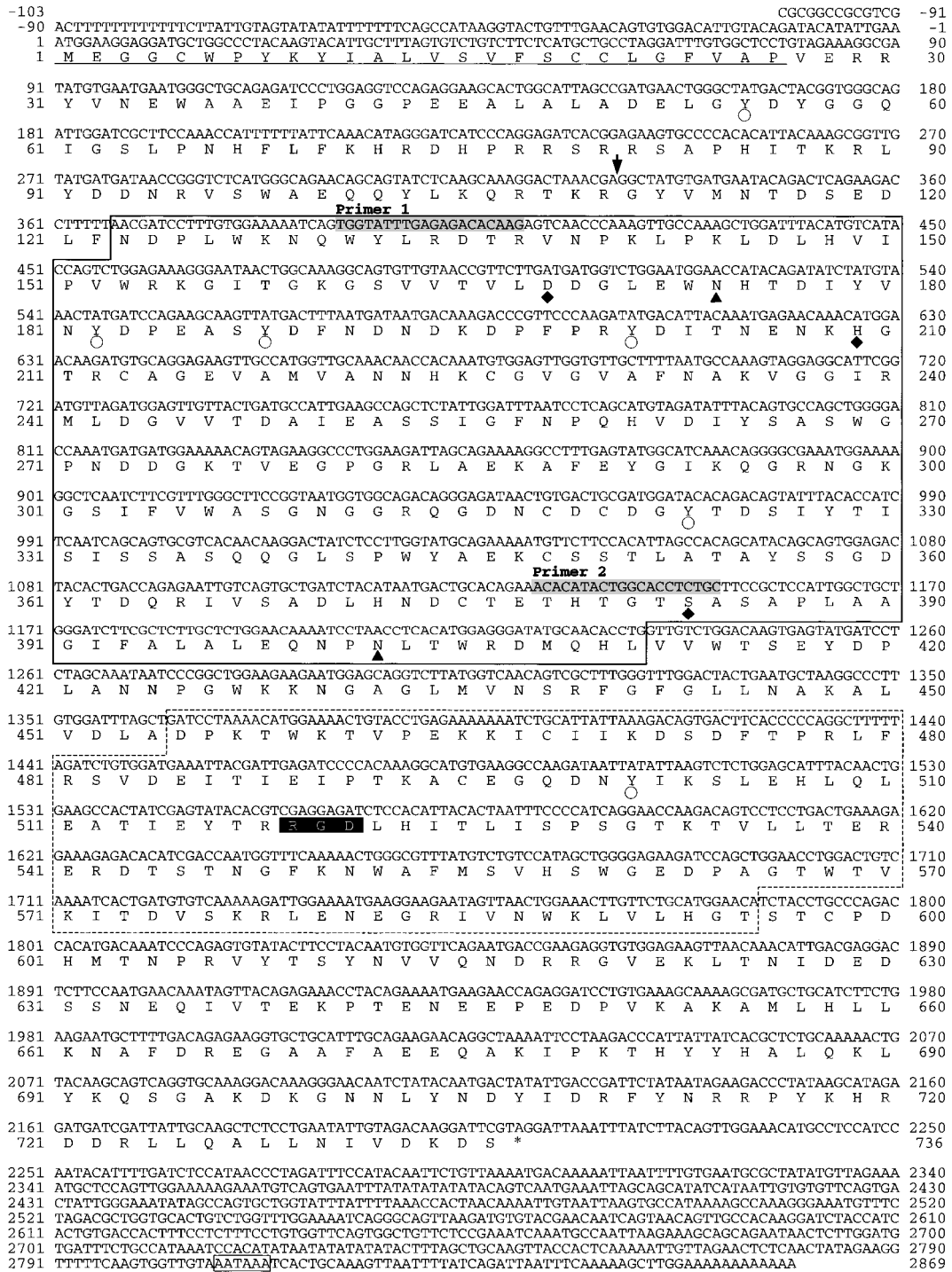


Fig. 1. Nucleotide and deduced amino-acid sequences of bullfrog PC1 cDNA. The predicted amino acid is shown below the nucleotide sequence (DDBJ/EMBL/GenBank accession no. AB105175). The asterisk indicates the termination codon. Polyadenylation signal region is boxed. The underlined letters indicate the amino acids comprising the signal peptide sequence. The putative cleavage site of prosegment indicates by arrow. Catalytic region and P-domain are enclosed by solid and dotted boxes, respectively. Triangles indicate putative N-glycosylation sites. Canonical integrin binding sequence indicates by a black background. Diamonds and white circles indicate Asp, His, and Ser of active site and tyrosine sulfation sites, respectively.

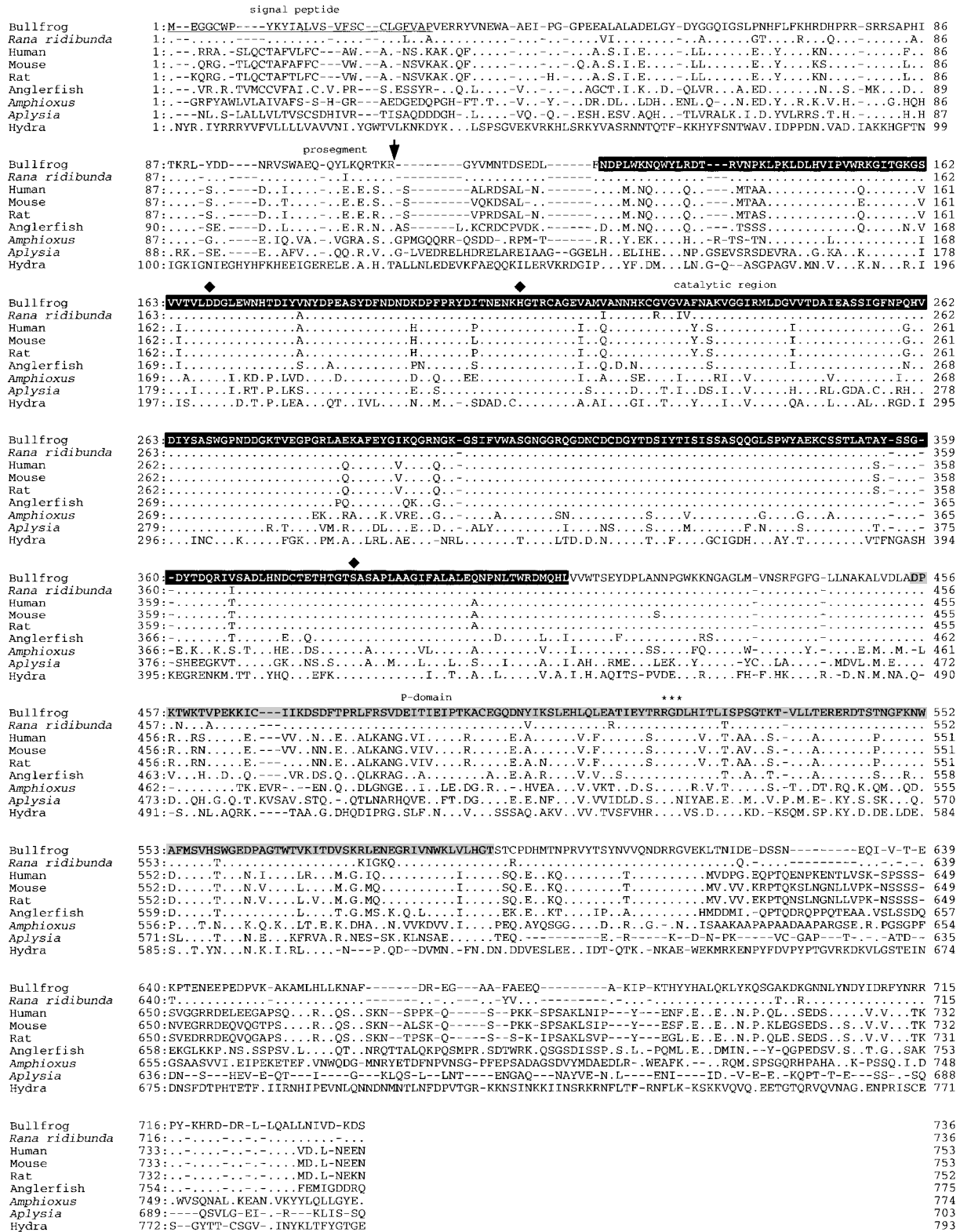


Fig. 2. Comparison of the predicted amino-acid sequences of the bullfrog PC1 with those of other vertebrate PC1s. The underlined letters indicate the amino acids comprising the signal peptide sequence. The putative cleavage site of prosegment indicates by arrow. Catalytic region and P-domain are enclosed by black and gray boxes, respectively. Diamonds indicate Asp, His, and Ser of active site of catalytic region. Canonical integrin binding sequence indicates by asterisks. The amino acid residues that match those of bullfrog PC1 are shown as dots. Gaps, indicated by dashed lines, have been introduced to obtain maximum homology. The sequences for *Rana ridibunda* (Gangnon et al., 1999), human (Creemers et al., 1992), mouse (Seidah et al., 1991), rat (Hakes et al., 1991), anglerfish (Roth et al., 1993), *Amphioxus* (Oliva et al., 1995), *Aplysia* (Gorham et al., 1996), and Hydra (Chan et al., 1992) PC1s are shown.

and the deduced amino acids. The cDNA consisted of a 5'-untranslated region of 103 bp and a 3'-untranslated region of 658 bp followed by a poly (A) tail. An open reading frame of 2208 bp encoded a protein of 736 amino acids (with a calculated Mr of 82876 and an isoelectric point of 5.86), consisting of a signal peptide of 26 amino acids and a mature peptide of 710 amino acids. The 3'-noncoding sequence contained a consensus polyadenylation signal (AATAAA)

and a poly (A) tail. The protein contained the Asp-168, His-209, and Ser-383 residues found in the catalytic triad of serine proteinases of the subtilisin family. There were 2 putative *N*-linked glycosylation sites, at Asn-174 and Asn-402, in the predicted amino acid sequence of the bullfrog PC1. The PC1 contained a canonical integrin binding sequence (Arg-Gly-Asp⁵²¹). Also, putative sulfation sites were found at Tyr-54, Tyr-182, Tyr-188, Tyr-201, Tyr-323,

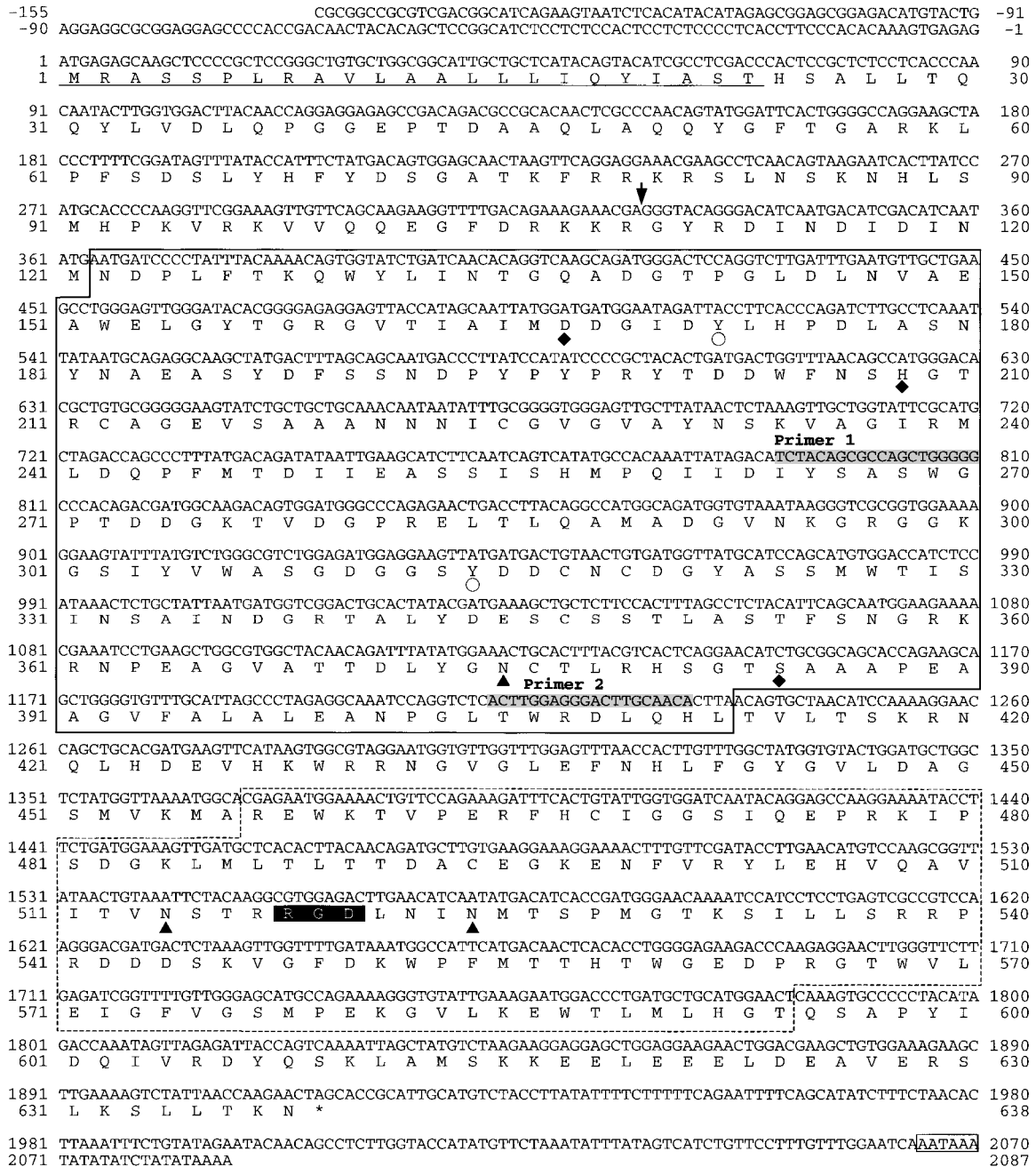


Fig. 3. Nucleotide and deduced amino-acid sequences of bullfrog PC2 cDNA. The predicted amino acid is shown below the nucleotide sequence (DDBJ/EMBL/GenBank accession no. AB105176). The asterisk indicates the termination codon. Polyadenylation signal region is boxed. The underlined letters indicate the amino acids comprising the signal peptide sequence. The putative cleavage site of prosegment indicates by arrow. Catalytic region and P-domain are enclosed by solid and dotted boxes, respectively. Triangles indicate putative *N*-glycosylation sites. Canonical integrin binding sequence indicates by a black background. Diamonds and white circles indicate Asp, His, and Ser of active site and tyrosine sulfation sites, respectively.

	signal peptide	
Bullfrog	1:MRAS-SPLRAVLA-AL-----L-----LIQ-YIASTHSALLT--QQYLVLDLPQGPGEPTDAAQLAQOYGTGARKLPFSDLSLHYFYDSDGATKFRKRKRL	83
<i>Rana ridibunda</i>	1:KG-----L-----VM--NV.A.S.--E..DQ-E.T..HE..A.....	81
<i>Xenopus</i>	1:..EGVVTVM-M..-V-----HLASLSV.AGRPV..-DHP..RE..-EAE.E..AE..S.T.....Q.....GN.I.TS.SR..V	84
Human	1:..KGGCVSQWAA..-G-----F-----FCVMVF..AERPVF..-NHF..E.HK..-EDK.R.V.AEH..-V.....AEG.....HN.LA.AK.R..	83
Mouse	1:..EGGCGSQWK-A..-G-----F-----FCVMVF..AERPVF..-NHF..E.HKD..-EEE.R.V.AEH..-V.....AEG.....HN.LA.AK.R..	82
Rat	1:..EGGCGSQWK-A..-G-----L-----FCVMVF..AERPVF..-NHF..E.HKD..-EEE.R.V.AEH..-V.....AEG.....HN.LA.AK.R..	82
<i>Amphioxus</i>	1:..VKPVGFLLRVQVQL..-V-----ATILVWYGACNSAPPY-TNDFAVQIRD.K.DT.EL..RK..YLNLGQIREQRD..RHR.VPHV..R.A	88
Ascidian	1:..ARLLCI..FVLATYSSSPT..WNDKTIIVADSSRGSGLA..AEVPTNDFIHK.K.DV.KKYGDE..RELE.INHGQI.T..E.....QHNQVKSVAESP.F	100
<i>Aplysia</i>	1:..SIFL.GWPHKVLPL..-C-L-----FWAPVWPGHGRQIDVVVTHNW..E.SHD.G.EL.KRV.RDT..SVVGPVLS..RTF..VHH.VAHA.SR..V	90
Snail	1:..NSFFLGLWSRKLVS..-C-L-----CWAISVPLGLKEFDVATNHW..E.THD.GEDV.RRV.RET...YIGP.LG.K.EF..THA.VPHA.S..I	90
	prosegment	
Bullfrog	84:..NSKNHLSMHPKRVKVVQEG-FDRKKRGY-RDI---NDI--DINNM- <u>DP-L---</u> FTKQWYLINTGQADGTPGLDLNVAAEWELGYTGRGVITAIMDDG	169
<i>Rana ridibunda</i>	82:K.....D.....K.....	167
<i>Xenopus</i>	85:..K.K.A.D..N.E...-H.....E.....	170
Human	84:..HH.QQ.ERD.R.KMAL.....E.....K...G.....	169
Mouse	83:..HH.RQ.ERD.RIKMAL.....E.....F.....K...G.....	168
Rat	83:..HH.RQ.ERD.RIKMAL.....E.....F.....K...G.....	168
<i>Amphioxus</i>	89:..AQQSR.ENDMR..AA..Q..-R.R...-NEVN--DNYR-Q.DI...-P.....L.....KA.....L...GM...E.....	176
Ascidian	101:..EHLRL.QLN...ES.Y.VK.YDN.L...K--PKLL--SHRYKGM--Y-PD--K...G.I...IR..D...K..VV.....	188
<i>Aplysia</i>	91:..PHTRQ.RV..H.VSAP..N.-YS.V...KQTDKLLQANKQSFYKAK.R.PNPDG.G...R...ESG.VK...L...M..S.A..T.....	189
Snail	91:..PHTRQ.RV..Q..TAY..S.-YM.V...KDAKLLTVNKH.GLAK.K.PNPDG.D...R...SG.VK...MA...M..S.A..T.....	189
	catalytic region	
Bullfrog	170:..FDYLDPLDLSNNAEASDFSSNDPYPYPRYTDDWFNSHGTRCAGVSAANNNICGVGVAYNSKVAGIRMLDQPFMTDIEASSISHMPOIIDTYSASW	269
<i>Rana ridibunda</i>	168:.....D.....K.....	267
<i>Xenopus</i>	171:.....S.....D.....V.....	270
Human	170:.....L.....L.....	269
Mouse	169:.....Y..D.....S.....L.....	268
Rat	169:.....Y..SD.....S.....L.....	268
<i>Amphioxus</i>	177:..V.....D.....D.....EAF.....V.GKI..GL...R.GAR.....MG.K.E...T.276	276
Ascidian	189:.....RD..IK.....V..Y.....V.GK.D.G...A.....LV..K.M..K.DL.....Y...L.V..K.M..K.DL.....	288
<i>Aplysia</i>	190:.....E..KF..H.D.....T.....K.D.GV...PG...L.....L...NAMG...NV.....	289
Snail	190:.....E..KN..H.D.....T.....K.D.GV...G...L.....L...NAMG...NV.....	289
Bullfrog	270:..GPTDDGKTVDGPRELTLQAMADGVNKRGGKGSIVVWASGDGGSVDDCNDGYASSMWTISNSAINDGRTALYDESSCSLASTFSNGRKRNPAGVAT	369
<i>Rana ridibunda</i>	268:.....	367
<i>Xenopus</i>	271:.....	370
Human	270:.....N.....DV.....	369
Mouse	269:.....N.....	368
Rat	269:.....N.....	368
<i>Amphioxus</i>	277:.....R.....V.....Q.....N.H.....	376
Ascidian	289:.....R.....R.....IVH.....H.L.....A.....V.N.E..I.....SGEPI.G.....	388
<i>Aplysia</i>	290:.....N..MR.IVN...N..N.L.NV...PN...A...V...T...Q..G.....KSSSRD.....	389
Snail	290:.....N..MR.IVN...N..N.L.NV...PN...A...R...Q..G.....KSSSRD.....	389
Bullfrog	370:..FDLYGNCYTERHSGTSAAPAAGVFALEAENPGLTWRDLQHLTVLTSKRNLQHD--EVHKWRNRNGVGLFNFHFGYVLDAGSMVKMAREWKTVPERFH	467
<i>Rana ridibunda</i>	368:.....T.....S.....A..N.....	465
<i>Xenopus</i>	371:.....L.....M.....Q.....A..N.....	468
Human	370:.....L.....M.....Q.....A..KD.....	467
Mouse	369:.....LD..M.....Q.....A..KD.....	466
Rat	369:.....VD..M.....Q.....A..KD.....	466
<i>Amphioxus</i>	377:.....K.....Q.....N..M.....Y..P..E.....F.....ED.N..K.....	474
Ascidian	389:.....H.....Y.....S.....M.....T..L.T.A--L.Q.OT..A.FS...F..N..N...KK...A.YR	486
<i>Aplysia</i>	390:.....N..AS.....KN...M.....S.Y.SNGI.H.KL..AH.L...A...DL..Q..GL.....	489
Snail	390:.....N..AS.....RN...M.....S.Y.SNGI.H.KL..AH.L...A...DL..SQ..RGL.....	489
	P-domain	***
Bullfrog	468:..CIGGSIQEPKIPSDGKLMTLTTDACEGKFNFRYLEHVQAVITVNSTRRGDLNINMTSPMGTKSILLRRPRDDSS--KVGDFDKWPFMTHTHWGEDPRG	566
<i>Rana ridibunda</i>	466:.....V.....N.....NS.....	564
<i>Xenopus</i>	469:.....A.....I..S.....	567
Human	468:..V..V.D.E..T..V.....A.....	566
Mouse	467:..V..V.N.E..PT..V..K.N.....A.....	565
Rat	467:..V..V.N.E..PT..V..Q.N.....A.....	565
<i>Amphioxus</i>	475:..T.T.MSDAKP..VE..VVVK.....Q.....V.LR...V..A...Q...T.N..V...R.....	573
Ascidian	487:..EA.RTTKQYI..T.EV.V.EIE.A...GN..IK.....L.LD...VT...N.N..RK...N-SQ..TR...A..N.K.	584
<i>Aplysia</i>	490:..KA...TDKQDFSGFNVRMSIE..G.V.T..E.N...FV.LR..Y..CVTMYL...T.MI..Q..N..D..N..TR...A.LSH.	588
Snail	490:..KA.TVSABKEFTFGKP.RMSTIES.G.F.T.E.N...F.LR..Y..CVTMY...T.MI..Q..N..D..N..TR...A.MS.	588
Bullfrog	567:..TWVLE--IG-FVG--SMPEKGVLKE-WTLMHLGTSAPYIDQIVRDYQSKLAMSCK-EE--L-----EEE--L-D--EA---V---E---	628
<i>Rana ridibunda</i>	565:.....N.....	626
<i>Xenopus</i>	568:.....V.....I.....	629
Human	567:..T..L.....A.Q.....V.....	628
Mouse	566:..T..L.....A.Q..L.....V.....Q.....	627
Rat	566:..T..L.....A.Q..L.....V.....Q.....	627
<i>Amphioxus</i>	574:..D.....V..Q..-DE.QE.D.L..R.....V.DEWHT..G.E..RQ.LD.KEEKKEEKE..KRQEKET..BEKET*NEEEEE.NGP	667
Ascidian	585:..I.T.RT--A.S..N..QQ.I.R.CR-I...E...-ADEI--V--SSD.LK.....A-AIT.M-EK--E.....	639
<i>Aplysia</i>	589:..S..IVMEPII.VKTNM.R..F...V...KTP..AN--PAD..DKQE--LY-----VR--R--R--EK--H--	647
Snail	589:..T.DIVMEPII.VKTNM.T.LF...V...KT..AK--PAD..ERHE--LY-----VR--R--R--EK--H--	647
Bullfrog	629:..RS-L--KSLT-TK-N----	638
<i>Rana ridibunda</i>	627:.....	636
<i>Xenopus</i>	630:.....S.....	639
Human	629:.....I..N.....	638
Mouse	628:.....Q.I..R.....	637
Rat	628:.....Q.I..R.....	637
<i>Amphioxus</i>	668:..KKGKEGGS.W.SV.P.YMIGL	688
Ascidian	640:.....A--S-----I--	642
<i>Aplysia</i>	648:.....SG--V--IDE-----	653
Snail	648:.....SG--V--VQE-----	653

Fig. 4. Comparison of the predicted amino-acid sequence of the bullfrog PC2 with those of other vertebrate PC2s. The underlined letters indicate the amino acids comprising the signal peptide sequence. The putative cleavage site of prosegment indicates by arrow. Catalytic region and P-domain are enclosed by black and gray boxes, respectively. Diamonds indicate Asp, His, and Ser of active site of catalytic region. Canonical integrin binding sequence indicates by asterisks. The amino acid residues that match those of bullfrog PC2 are shown as dots. Gaps, indicated by dashed lines, have been introduced to obtain maximum homology. The sequences for *Rana ridibunda* (Vieau et al., 1998), *Xenopus* (Braks et al., 1992), human (Smeekens et al., 1990), mouse (Seidah et al., 1991), rat (Hakes et al., 1991), *Amphioxus* (Oliva et al., 1995), ascidian (AB086187), *Aplysia* (Chun et al., 1994) and snail (Smit et al., 1992) PC2s are shown.

and Tyr-501. From the high degree of identity between the amino acid sequence of this protein and those sequence of *R. ridibunda* (95.6%; Gangnon *et al.*, 1999), human (62.7%; Creemers *et al.*, 1992), mouse (67.2%; Seidah *et al.*, 1991), rat (66.8%; Hakes *et al.*, 1991), anglerfish (68.1%; Roth *et al.*, 1993), *Amphioxus* (56.1%; Oliva *et al.*, 1995), *Aplysia* (53.8%; Gorham *et al.*, 1996) and *Hydra* (41.5%; Chan *et al.*, 1992) PC1, we concluded that this cDNA encoded the bullfrog PC1 protein (Fig. 2).

Fig. 3 shows the full cDNA sequence of bullfrog PC2 and its deduced amino acid sequence. The cDNA consisted of a 5'-untranslated region of 155 bp and a 3'-untranslated region of 170 bp followed by a poly (A) tail. An open reading frame of 1914 bp encoded a protein of 638 amino acids (with a calculated Mr of 70632 and an isoelectric point of 5.83), consisting of a signal peptide of 23 amino acids and a mature peptide of 615 amino acids. The 3'-noncoding sequence contained a consensus polyadenylation signal (AATAAA) and a poly (A) tail. The protein contained the Asp-167, His-208, and Ser-384 residues found in the catalytic triad of serine proteinases of the subtilisin family. There were 3 putative N-linked glycosylation sites, at Asn-375,

Asn-514, and Asn-524, in the predicted amino acid sequence of bullfrog PC2. The PC2 contained a canonical integrin binding sequence (Arg-Gly-Asp⁵²⁰). In addition, putative sulfation sites were seen at Tyr-172 and Tyr-314. As there was a high degree of identity between the amino acid sequence of this protein and those of *R. ridibunda* (95.5%; Vieau *et al.*, 1998), *Xenopus* (90.4%; Braks *et al.*, 1992), human (85.9%; Smeekens *et al.*, 1990), mouse (84.2%; Seidah *et al.*, 1991), rat (84.2%; Hakes *et al.*, 1991), *Amphioxus* (71.6%; Oliva *et al.*, 1995), ascidian (64.6%; AB086187), *Aplysia* (60.2%; Chun *et al.*, 1994) and snail (61.0%; Smit *et al.*, 1992) PC2, we concluded that this cDNA encoded the bullfrog PC2 protein (Fig. 4).

Expression distribution of bullfrog PC1 and PC2 mRNAs in various organs

To investigate the tissue distribution of bullfrog PC1 and PC2 mRNA expression, we performed RT-PCR using total RNA from various tissues. Both PC1 and PC2 mRNAs were detected in the pars distalis, neurointermediate lobe, brain, and pancreas (Fig. 5a). PC1 mRNA was detected in the stomach and intestine, and PC2 mRNA was found in the

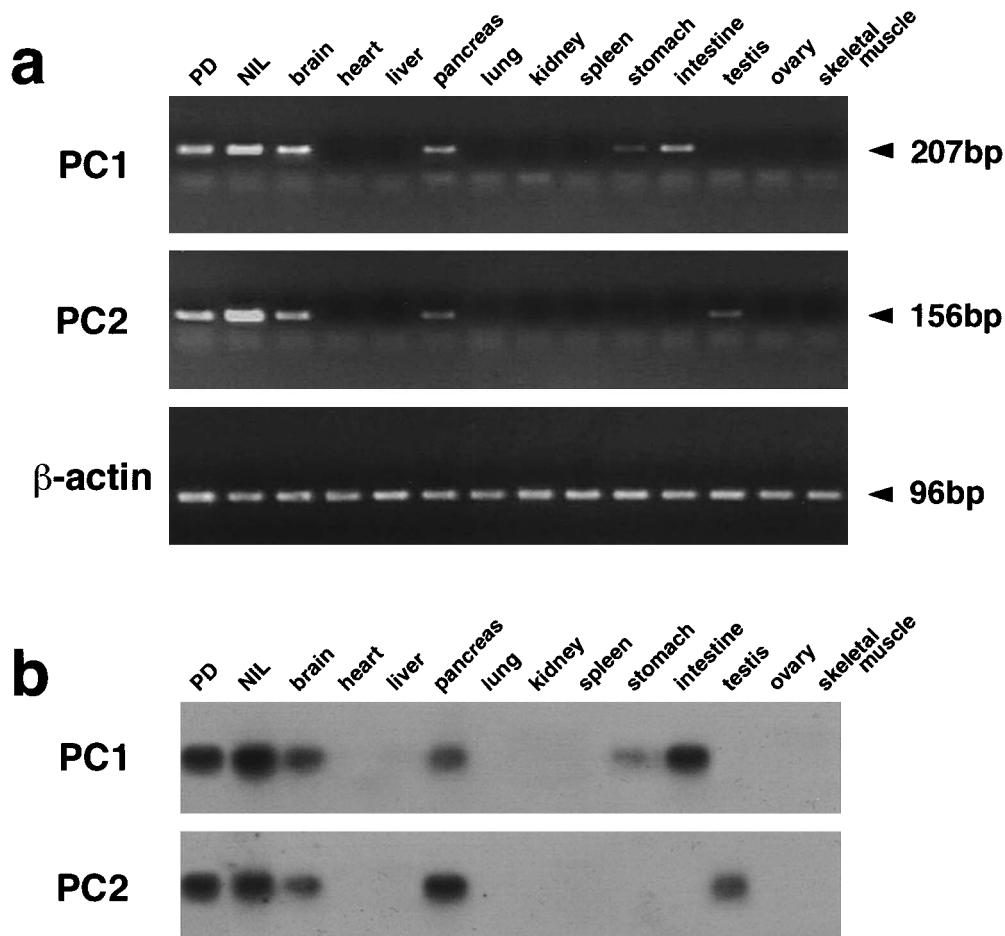


Fig. 5. RT-PCR (a) and Southern blot (b) analysis of PC1 and PC2 mRNAs in adult bullfrog tissue extracts. RT-PCR products obtained by using the primers described in Materials and Methods were separated on a 2% agarose gel and stained with ethidium bromide. The Southern blot of the gel was performed using bullfrog PC1 or PC2 cDNAs as a probe.

testis. No distinct bands of PC1 or PC2 mRNAs were detected in the heart, liver, lung, kidney, spleen, ovary, or skeletal muscle. These RT-PCR results were confirmed by Southern blot analysis (Fig. 5b).

Distribution of PC1 and PC2 mRNAs in the pituitary gland

We determined the sites of PC1 mRNA expression in the pituitary gland by *in situ* hybridization histochemistry with a DIG-labeled antisense cRNA probe. As shown in Fig. 6a, the hybridization signal for PC1 mRNA was distributed throughout the pars distalis, and the most intense staining was seen in the rostral region. Strong signals were also detected in the pars intermedia, whereas weak signal was noted in the pars nervosa. The hybridization signal was confined to the cytoplasm: the nucleus remained unstained (Fig.

6b). The positive cells were often round or ovoid. The number and intensity of reactions varied among the hybridization-positive cells, probably reflecting differences in mRNA expression. On the other hand, a different distribution of hybridization signals was observed when the PC2 cRNA probe was used. There was intense signal for the PC2 mRNA in the intermediate lobe, but not in the pars distalis or the pars nervosa (Fig. 6c, d). When the tissue section was incubated with sense PC1 or PC2 probes, no hybridization signal was detected (data not shown). In the tadpoles, both PC1 and PC2 mRNAs were expressed in the partes distalis, intermedia, and nervosa (Fig. 7).

To identify cells that express PC1 mRNA in the pars distalis, we applied fluorescence staining with guinea pig anti-bullfrog POMC, rabbit anti- α -MSH or mouse monoclonal antibody against bullfrog LH β to the same sections. In

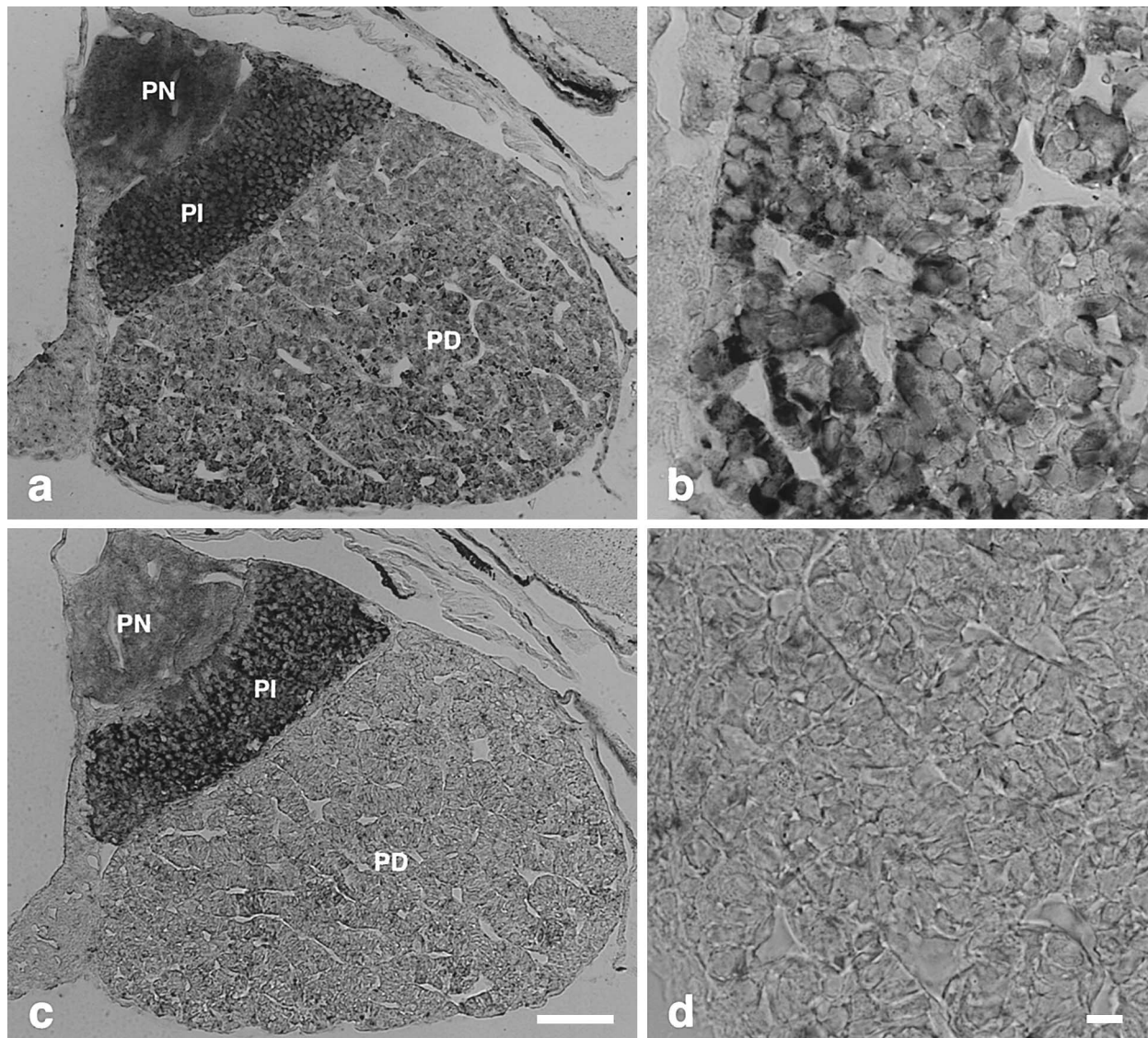


Fig. 6. Light micrographs showing localization of PC1 mRNA (a, b) and PC2 mRNA (c, d) in the adult pituitary gland. PC1 mRNA is seen in the pars distalis, intermedia, and nervosa, whereas PC2 mRNA is detected in the pars intermedia and nervosa. PD: pars distalis, PI: pars intermedia, PN: pars nervosa. Bar: a, c=100 μ m; b, d=10 μ m

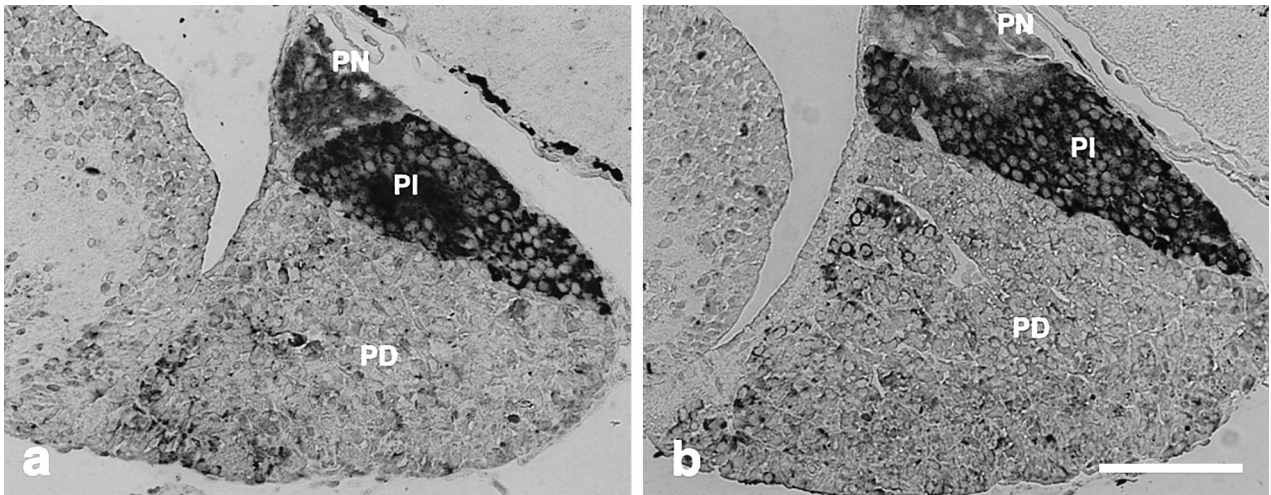


Fig. 7. Light micrographs showing localization of PC1 and PC2 mRNAs in the pituitary gland of the tadpoles. Both PC1 (a) and PC2 (b) mRNAs are expressed in the pars distalis, intermedia, and nervosa. Bar=100 μ m

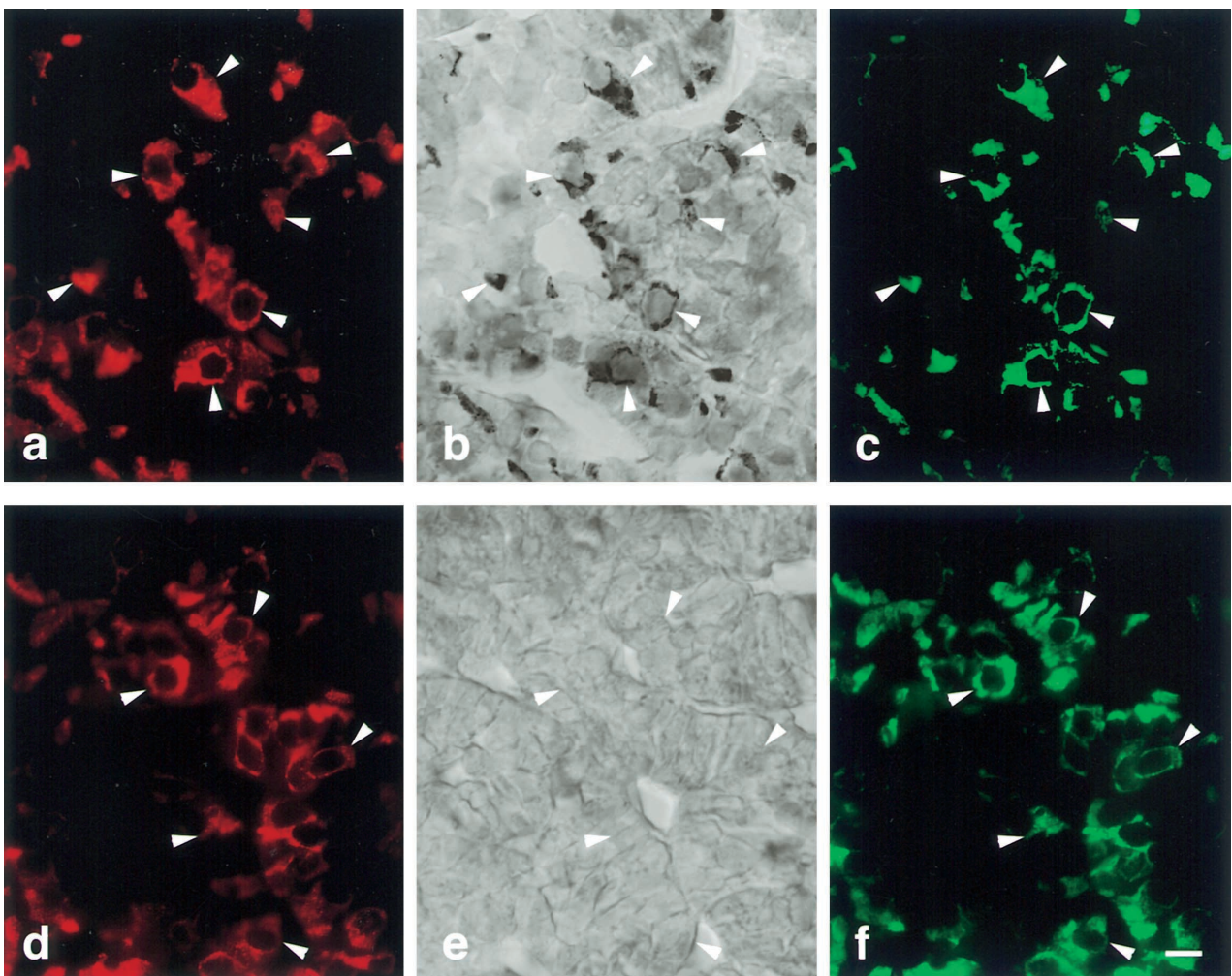


Fig. 8. Light micrographs showing triple-staining for POMC (a, d), PC1 mRNA (b), α -MSH (c, f) and PC2 mRNA (e) in the adult pars distalis. PC1 mRNA-expressing cells correspond to POMC-immunopositive cells containing α -MSH (a, b, c). Cells co-expressing both POMC and α -MSH do not express PC2 mRNA (d-f). Arrowheads indicate the corresponding cells. Bar=10 μ m

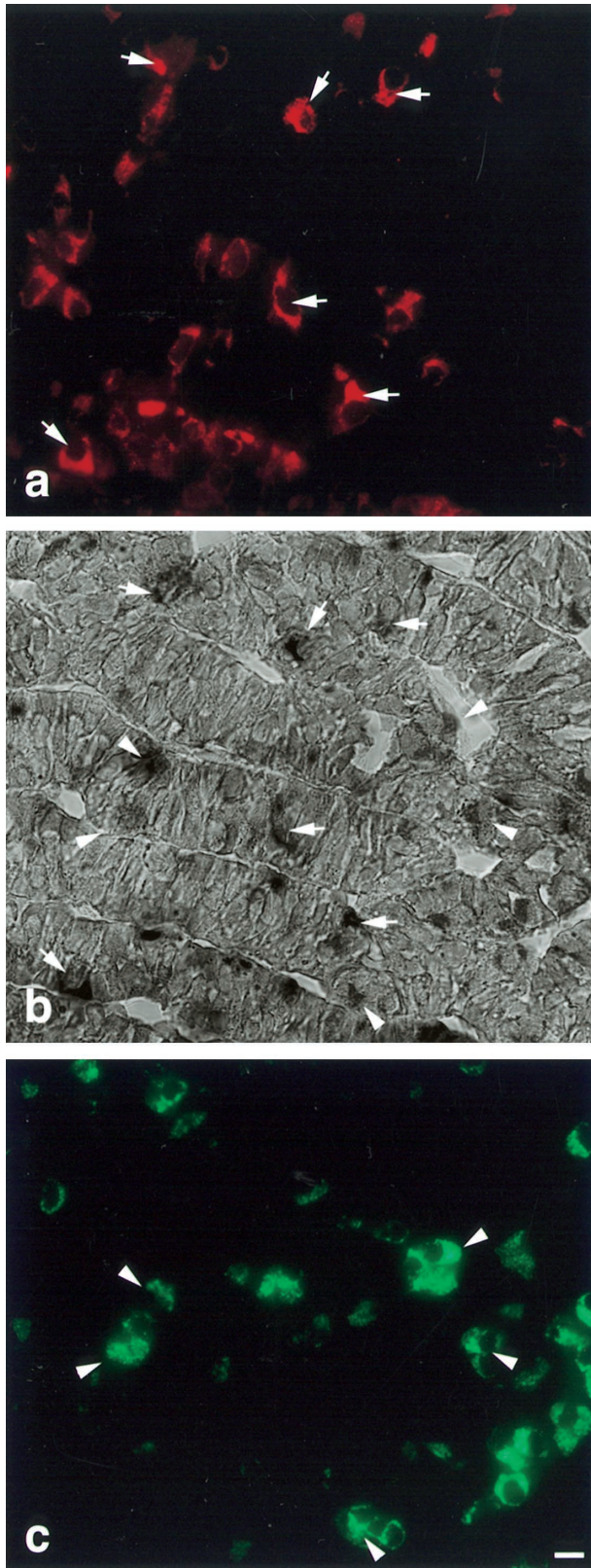


Fig. 9. Light micrographs showing triple-staining for POMC(a), PC1 mRNA (b), and LH β (c) in the adult pars distalis. Some PC1 mRNA-expressing cells correspond to POMC-immunopositive cells (arrows); and others, to LH β -immunopositive cells (arrowheads). Bar=10 μ m

the adult bullfrog, we observed PC1 mRNA in POMC-immunopositive cells in the pars distalis (Fig. 8a, b). These cells were also reactive with anti- α -MSH (Fig. 8a, c); but cells positive for both POMC and α -MSH were not reactive with the PC2 antisense probe (Fig. 8d–f). In addition, PC1 mRNA was expressed in LH β -immunopositive cells (Fig. 9). In the pars distalis of tadpoles, PC1 mRNA was expressed in POMC-immunopositive cells that were also α -MSH positive (Fig. 10a–c); and PC2 mRNA was likewise detected in such cells (Fig. 10d–f).

DISCUSSION

The present study describes the sequences of mRNAs encoding PC1 and PC2 from the bullfrog pituitary. Both PCs were structurally characterized by having a signal peptide, a prosegment, a catalytic region, a P-domain, and a variable C-terminal region. The predicted amino acid sequence of these PCs showed high homology with those of various other species. The bullfrog PC1 cDNA was predicted to encode a 736-amino acid protein with a putative 26-residue signal peptide, and the PC2 cDNA, a 638-amino acid protein, with a putative 23-residue signal peptide. It has been shown that PCs are first synthesized as inactive precursor enzymes, which undergo autocatalytic excision or furin-dependent cleavage of their *N*-terminal prosegment via cleavage at a specific Arg-Arg-Ser-Arg-Arg and Arg-Ser-Lys-Arg in PC1 protein, and Lys-Arg-Arg-Arg and Arg-Lys-Lys-Arg in PC2 protein (Muller and Lindberg, 1999). Although there are 2 possible cleavage sites in the prosegment of both bullfrog PCs, the actual sites are considered to be Arg-Thr-Lys-Arg¹¹⁰ in the PC1 protein and Arg-Lys-Lys-Arg¹⁰⁹ in the PC2 protein, because these sites correspond to the cleavage sites of prosegment in the mammalian PCs (Benjannet *et al.*, 1992; Zhou and Lindberg, 1993). The mature PC1 protein contains 626 amino acids with 2 putative *N*-glycosylation sites, whereas the mature PC2 protein contains 529 amino acids with 3 such sites. The catalytic domain is well conserved, especially in the regions surrounding the catalytic triad of PC1 (Asp¹⁶⁸, His²⁰⁹, and Ser³⁸³) and of PC2 (Asp¹⁶⁷, His²⁰⁸, and Ser³⁸⁴). In the P-domain of both PCs, the canonical integrin binding Arg-Gly-Asp sequence was also present, as found in all mammalian convertases except PC7 (Seidah and Cretien, 1992; Seidah *et al.*, 1996) though this sequence was absent in the PC2 protein of *R. ridibunda* (Vieau *et al.*, 1998).

In this study, we investigated the expression of PC1 and PC2 mRNAs by using RT-PCR. Both PC1 and PC2 mRNAs were expressed in the pars distalis, pars neurointermedia, brain, and pancreas. This result is mostly consistent with previous reports (Vieau *et al.*, 1998; Seidah *et al.*, 1990; Gangnon *et al.*, 1999). It is of interest that only PC1 mRNA was expressed in the stomach and intestine, whereas PC2 mRNA was the only type in the testis. The expression of PC1 mRNA may be involved in the processing of the intestinal type of proglucagon (Dhanvantari *et al.*,

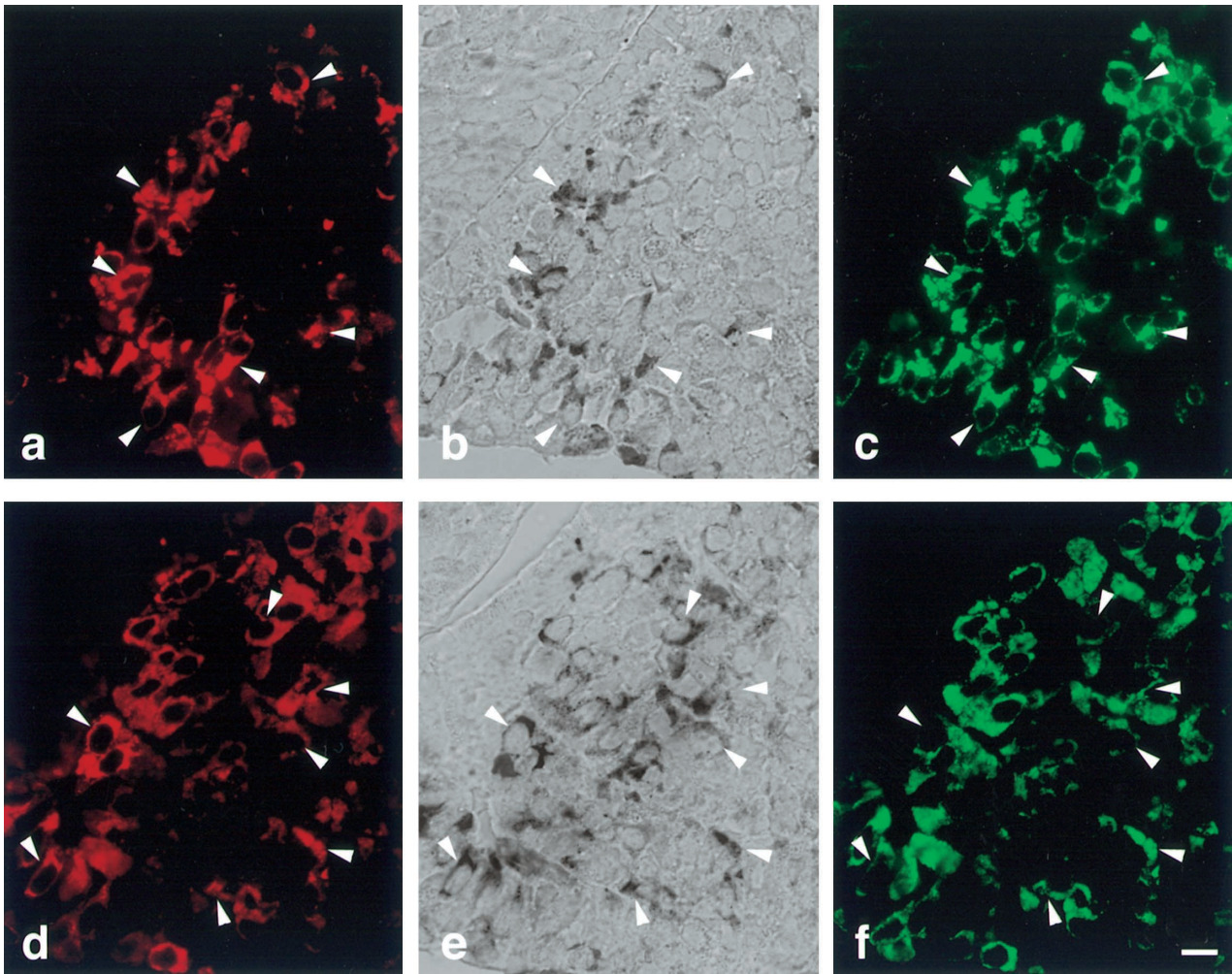


Fig. 10. Light micrographs showing triple-staining for POMC (a, d), PC1 mRNA (b), α -MSH (c, f), and PC2 mRNA (e) in the pars distalis of the tadpoles. PC1 mRNA-expressing cells correspond to POMC-immunopositive cells containing α -MSH (a, b, c). PC2 mRNA-expressing cells also co-express POMC and α -MSH (d-f). Arrowheads indicate the corresponding cells. Bar=10 μ m

1996) and in the processing of progastrin in the stomach (Macro *et al.*, 1996), whereas the PC2 may have some effect on the post-translational processing in the bullfrog testis. However, considering that only PC4 has been identified in the mammalian testis (Nakayama *et al.*, 1992; Seidah *et al.*, 1992; Mbikay *et al.*, 1997; Li *et al.*, 2000), it is possible that the PC related with PC4 is present in the bullfrog testis. Further studies are necessary to identify another type of PC in the frog testis, and to compare substrate-specificity between PC2 and PC4.

In mammals, heterologous gene transfection studies have indicated that PC1 and PC2 play an important role in the tissue-specific processing of POMC; PC1 alone cleaves POMC in the pars distalis, whereas both PC1 and PC2 are required to carry out POMC processing in the pars intermedia (Benjannet *et al.*, 1991; Thomas *et al.*, 1991). Earlier biochemical studies using *in situ* hybridization and Northern blot analysis showed that the corticotrope cells in the adult rat pituitary predominantly expressed PC1 mRNA but rarely PC2 mRNA (Seidah *et al.*, 1991; Day *et al.*, 1992). In the

present *in situ* hybridization, PC1 mRNA was shown to be expressed in the pars distalis and the pars intermedia, whereas PC2 mRNA was detected only in the pars intermedia, of the adult bullfrog. Similar results were obtained with *R. ridibunda* (Vieau *et al.*, 1998; Gangnon *et al.*, 1999). An *in situ* hybridization experiment with the antisense RNA of *Xenopus* PC2 also revealed that PC2 mRNAs were predominantly expressed in the pars intermedia of the *Xenopus* pituitary (Braks *et al.*, 1992). The expression of PC1 and PC2 mRNAs in the pituitary is also in good agreement with previous immunohistochemical findings showing that the pars distalis had PC1 protein, and the pars intermedia contained both PC1 and PC2 proteins, in the bullfrog pituitary (Kurabuchi and Tanaka, 1997). Consequently, although PC2 mRNA was detected in the adult pars distalis by the present RT-PCR, very little PC2 mRNA may have been translated there. However, Iwamura *et al.* (1992) obtained a considerable amount of N-terminal peptide of POMC not containing γ -MSH (NPP) from the pars distalis of the adult bullfrogs. If this peptide was generated in the same way as

in the pars intermedia (Ekman *et al.*, 1982), PC2 would have to be present in the bullfrog pars distalis. Further studies are needed to reach a definite conclusion.

In the present study, we showed that PC1 mRNA-expressing cells corresponded to corticotrope cells in the pars distalis. This finding implies that proteolytic cleavage of POMC by PC1 would produce ACTH (1–39) in the pars distalis. On the other hand, both PC1 and PC2 mRNAs were expressed in the pars intermedia. Therefore, ACTH 1–39 liberated from POMC would be further cleaved into α -MSH and CLIP in this part of the pituitary. Also, the degree of expression of PC2 in the pars intermedia was higher than that of PC1. This finding is consistent with results from mammals (Day *et al.*, 1992). Interestingly, the present study revealed that PC2 mRNA was expressed in the α -MSH-positive corticotrope cells of the tadpoles. In mammals, it is known that PC2 mRNA is also expressed in corticotrope cells during development until neonatal week 3, thereby producing α -MSH in the pars distalis (Marcinkiewicz *et al.*, 1993). The α -MSH is considered to have stimulatory effects on intrauterine growth (Swaabet *et al.*, 1976) and growth-stimulating effects on the adrenal zona glomerulosa (Robba *et al.*, 1986). Similarly, in *Ambystoma*, corticotrope cells produce α -MSH during larval period (Dores *et al.*, 1989, 1990, 1993). The production of α -MSH during the neonatal period or larval period is considered to be a general phenomenon, and it is accepted that the α -MSH production varies in accordance with the expression of PC2. Thus, the situation in the frogs is nearly consistent with that of POMC cells in mammalian pituitary (Marcinkiewicz *et al.*, 1993). However, in the present study, we did not observe expression of PC2 mRNA in corticotrope cells in the adult bullfrogs, although α -MSH-immunoreactivity was detected in the corticotrope cells. This implies that either very little PC2 mRNA is translated or that α -MSH, produced in the tadpoles, remains stored in the secretory granules.

The present study also showed that PC1 mRNA was expressed in the gonadotrope cells. It is conceivable that proprotein processing does not take place in these cells. However, it is possible that other proteins such as granin family proteins with proteolytic cleavage sites are contained in the secretory granules and that their proteins are cleaved by PC1. Indeed, we have shown that both PC1 and PC2 are expressed in the rat pituitary gonadotrope cells, suggesting that these convertases may be involved in the processing of secretogranin II and chromogranin A (Uehara *et al.*, 2001).

Taken together, the data from this comparative study provide further information about the molecular mechanism underlying proteolytic cleavage of POMC in the pituitary.

ACKNOWLEDGMENTS

Supported in part by a grant-in-aid for scientific research from the Ministry of Education, Science, Sports, and Culture of Japan to ST.

REFERENCES

- Benjannet S, Rondeau N, Day R, Chretien M, Seidah NG (1991) PC1 and PC2 are proprotein convertases capable of cleaving proopiomelanocortin at distinct pairs of basic residues. *Proc Natl Acad Sci USA* 88: 3564–3568
- Benjannet S, Reudelhuber T, Mercure C, Rondeau N, Chretien M, Seidah NG (1992) Proprotein conversion is determined by a multiplicity of factors including convertase processing, substrate specificity, and intracellular environment. Cell type-specific processing of human prorenin by the convertase PC1. *J Biol Chem* 267: 11417–11423
- Berghs CAFM, Tanaka S, van Strien FJC, Kurabuchi S, Roubos EW (1997) The secretory granule and pro-opiomelanocortin processing in *Xenopus* melanotrope cells during background adaptation. *J Histochem Cytochem* 45: 1673–1682
- Braks JAM, Guldemond KCW, van Riel MCHM, Coenen AJM, Martens GJM (1992) Structure and expression of *Xenopus* prohormone convertase PC2. *FEBS Lett* 305: 45–50
- Chan SJ, Oliva AAJr, LaMendola J, Grens A, Bode H, Steiner DF (1992) Conservation of the prohormone convertase gene family in metazoa: analysis of cDNAs encoding a PC3-like protein from hydra. *Proc Natl Acad Sci USA* 89: 6678–6682
- Chretien M, Sikstrom R, Lazure C, Mbikay M, Benjannet S, Marcinkiewicz M, Seidah NG (1989) Expression of the diversity of neural and hormonal peptides via the cleavage of precursor molecules. In "Peptide Hormones as Prohormones. Processing, Biological Activity, Pharmacology", Ed by J Martinez, Ellis Horwood Lit., Chichester, pp 1–25
- Chun JY, Korner J, Kreiner T, Scheller RH, Axel R (1994) The function and differential sorting of a family of aplasia prohormone processing enzymes. *Neuron* 12: 831–844
- Creemers JWM, Roebroek AJM, Van de Ven WJM (1992) Expression in human lung tumor cells of the proprotein processing enzyme PC1/PC3. Cloning and primary sequence of a 5 kb cDNA. *FEBS Lett* 300: 82–88
- Day R, Schafer MK-H, Watson SJ, Chretien M, Seidah NG, (1992) Distribution and regulation of the prohormone convertases PC1 and PC2 in the rat pituitary. *Mol Endocrinol* 6: 485–497
- Dhanvantari S, Seidah NG, Brubaker PL (1996) Role of prohormone convertases in the tissue-specific processing of proglucagon. *Mol Endocrinol* 10: 342–355
- Dores RM, Meza JC, Schenk LM, Carr JA, Norris DO (1989) Detection of adrenocorticotropin-related and α -melanocyte-stimulating hormone-related substances in the anterior pituitary of larval and adult *Ambystoma tigrinum* (Class: Amphibia). *Endocrinology* 124: 1007–1016
- Dores RM, Schenk LM, Meza J (1990) Developmental changes in the processing of ACTH in the anterior pituitary of the amphibian, *Ambystoma tigrinum*. *J Exp Zool* 4: 154–156
- Dores RM, Sandoval FL, McDonald LK (1993) Proteolytic cleavage of ACTH in corticotropes of sexually mature axolotls (*Ambystoma mexicanum*). *Peptides* 14: 1029–1035
- Ekman R, Hakanson R, Jornvall H (1981) A novel N-terminal fragment of pro-gamma-melanotropin, not containing gamma-melanotropin and generated from a cleavage site lacking the traditional two basic residues. *FEBS Lett* 132: 265–268
- Eipper BA, Mains RE (1980) Structure and biosynthesis of pro-adrenocorticotropin/endorphin and related peptides. *Endocrine Rev* 1: 1–27
- Gangnon F, Danger JM, Jegou S, Vieau D, Seidah NG, Vaudry H (1999) Molecular cloning, characterization of cDNA, and distribution of mRNA encoding the frog prohormone convertase PC1. *J Comp Neurol* 405: 160–172
- Gorham EL, Nagle GT, Smith JS, Shen H, Kurosky A (1996) Molecular cloning of prohormone convertase 1 from the atrial gland of

- Aplysia. *DNA Cell Biol* 15: 339–345
- Hakes DJ, Birch NP, Mezey A, Dixon J (1991) Isolation of two complementary deoxyribonucleic acid clones from a rat insulinoma cell line based on similarities to Kex2 and furin sequences and the specific localization of each transcript to endocrine and neuroendocrine tissues in rats. *Endocrinology* 129: 3053–3063
- Kurabuchi S, Tanaka S (1997) Immunocytochemical localization of prohormone convertases PC1 and PC2 in anuran pituitary gland - subcellular localization in corticotrope and melanotrope cells. *Cell Tissue Res* 288: 485–496
- Li M, Mbikay M, Arimura A (2000) Pituitary adenylate cyclase-activating polypeptide precursor is processed solely by prohormone convertase 4 in the gonads. *Endocrinology* 141: 3723–3730
- Macro JA, Dimaline R, Dockray GJ (1996) Identification and expression of prohormone-converting enzymes in the rat stomach. *Amer J Physiol* 270: G87–G93
- Marcinkiewicz M, Day R, Seidah NG, Chretien M (1993) Ontogeny of the prohormone convertases PC1 and PC2 in the mouse hypophysis and their colocalization with corticotropin and α -melanotropin. *Proc Natl Acad Sci USA* 90: 4922–4926
- Mbikay M, Tadros H, Ishida N, Lerner CP, De Lamirande E, Chen A, El-Alfy M, Clermont Y, Seidah N, Chretien M, Gagnon C, Simpson EM (1997) Impaired fertility in mice deficient for the testicular germ-cell protease PC4. *Proc Natl Acad Sci USA* 94: 6842–6846
- Muller L & Lindberg I (1999) The cell biology of the prohormone convertases PC1 and PC2. *Prog Nucleic Acid Res Mol Biol* 63: 69–108
- Nakayama K, Kim W-S, Torii S, Hosaka M, Nakagawa T, Ikemizu J, Baba T, Murakami K (1992) Identification of the fourth member of the mammalian endoprotease family homologous to the yeast Kex2 protease. *J Biol Chem* 267: 5897–5900
- Park MK, Tanaka S, Hayashi H, Hanaoka Y, Wakabayashi K, Kurosumi K (1987) Production and characterization of a monoclonal antibody against the β -subunit of bullfrog lutropin. *Gen Comp Endocrinol* 68: 82–90
- Oliva AA Jr, Steiner DF, Chan SJ (1995) Proprotein convertases in amphioxus: predicted structure and expression of proteases SPC2 and SPC3. *Proc Natl Acad Sci USA* 92: 3591–3595
- Robba C, Rebuffat P, Mazzocchi G, Nussdorfer GG (1986) Long-term trophic action of alpha-melanocyte-stimulating hormone on the zona glomerulosa of the rat adrenal cortex. *Acta Endocrinol (Copenh)* 112: 404–408
- Rosa P, Policastro P, Herbert E (1980) A cellular basis for the differences in regulation of synthesis and secretion of ACTH/endorphin peptides in anterior and intermediate lobes of the pituitary. *J Exp Biol* 89: 215–237
- Roth WW, Mackin RB, Noe BD (1993) Characterization and regulation of expression of the anglerfish prohormone processing endopeptidase PC1. *Endocrine J* 1: 131–140
- Saito A, Kano Y, Suzuki M, Tomura H, Takeda J, Tanaka S (2002) Sequence analysis and expressional regulation of mRNAs encoding β -subunits of follicle-stimulating hormone and luteinizing hormone in the red-bellied newt, *Cynops pyrrhogaster*. *Biol Reprod* 66: 1299–1309
- Seidah NG, Gaspar L, Mion P, Marcinkiewicz M, Mbikay M, Chretien M (1990) cDNA sequence of two distinct pituitary proteins homologous to Kex2 and furin gene products: tissue-specific mRNAs encoding candidates for pro-hormone processing proteinases. *DNA Cell Biol* 9: 415–424
- Seidah NG, Marcinkiewicz M, Benjannet S, Gaspar L, Beaubien G, Mattei MG, Larure C, Mbikay M, Chretien M (1991) Cloning and primary sequence of a mouse candidate prohormone convertase PC1 homologous to PC2, furin, and Kex2: distinct chromosomal localization and messenger RNA distribution in brain and pituitary compared to PC2. *Mol Endocrinol* 5: 111–122
- Seidah NG, Day R, Hamelin J, Gaspar A, Collard MW, Chretien M (1992) Testicular expression of PC4 in the rat: molecular diversity of a novel germ cell-specific kex2/subtilisin-like proprotein convertase. *Mol Endocrinol* 6: 1559–1570
- Seidah N, Chretien M (1992) Proprotein and prohormone convertases of the subtilisin family. Recent developments and future perspectives. *Trends Endocrinol Metab* 3: 133–140
- Seidah NG, Hamelin J, Mamarbachi M, Dong W, Tardos H, Mbikay M, Chretien M, Day R (1996) cDNA structure, tissue distribution, and chromosomal localization of rat PC7, a novel mammalian proprotein convertase closest to yeast kexin-like proteinases. *Proc Natl Acad Sci USA* 93: 3388–3393
- Smeekens SP, Steiner DF (1990) Identification of a human insulinoma cDNA encoding a novel mammalian protein structurally related to the yeast dibasic processing protease Kex2. *J Biol Chem* 265: 2997–3000
- Smeekens SP, Avruch AS, LaMendola J, Chan SJ, Steiner DF (1991) Identification of a cDNA encoding a second putative prohormone convertase related to PC2 in AtT20 cells and islets of Langerhans. *Proc Natl Acad Sci USA* 88: 340–344
- Smit AB, Spijker S, Geraerts WP (1992) Molluscan putative prohormone convertases: structural diversity in the central nervous system of *Lymnaea stagnalis*. *FEBS Lett* 312: 213–218
- Swaab DF, Visser M, Tilders FJH (1976) Stimulation of intra-uterine growth in rat by α -MSH. *J Endocrinol* 70: 445–452
- Tanaka S, Kurosumi K (1986) Differential subcellular localization of ACTH and α -MSH in corticotropes of the rat anterior pituitary. *Cell Tissue Res* 243: 229–238
- Taylor AC, Korllos JJ (1946) Stages in the normal development of *Rana pipiens* larvae. *Anat Rec* 94: 7–23
- Thomas L, Leduc R, Thorne BA, Smeekens SP, Steiner DF, Thomas G (1991) Kex2-like endoproteases PC2 and PC3 accurately cleave a model prohormone in mammalian cells: evidence for a common core of neuroendocrine processing enzymes. *Proc Natl Acad Sci USA* 88: 5297–5301
- Uehara M, Yaoi Y, Suzuki M, Takata K, Tanaka S (2001) Differential localization of prohormone convertase (PC1 and PC2) in two distinct types of secretory granules in rat pituitary gonadotrophs. *Cell Tissue Res* 304: 43–49
- Yaoi Y, Suzuki M, Tomura H, Sasayama Y, Kikuyama S, Tanaka S (2003) Molecular cloning of otoconin-22 cDNA: effect of calcitonin on otoconin-22 mRNA levels. *Endocrinology* 144: 3287–3296
- Vieau D, Gangnon F, Jegou S, Danger JM, Vaudry H (1998) Characterization of the cDNA encoding the prohormone convertase PC2 and localization of the mRNA in the brain of the frog *Rana ridibunda*. *Mol Brain Res* 63: 1–13
- Zhou Y, Lindberg I (1993) Purification and characterization of the prohormone convertase PC1 (PC3). *J Biol Chem* 268: 5615–5623

(Received May 14, 2003 / Accepted June 20, 2003)