



Mean vertical deformation map in Jakarta coastal area.

Source: Journal of Coastal Research, 102(sp1)

Published By: Coastal Education and Research Foundation

URL: <https://doi.org/10.2112/1551-5036-102.sp1.i>

BioOne Complete (complete.BioOne.org) is a full-text database of 200 subscribed and open-access titles in the biological, ecological, and environmental sciences published by nonprofit societies, associations, museums, institutions, and presses.

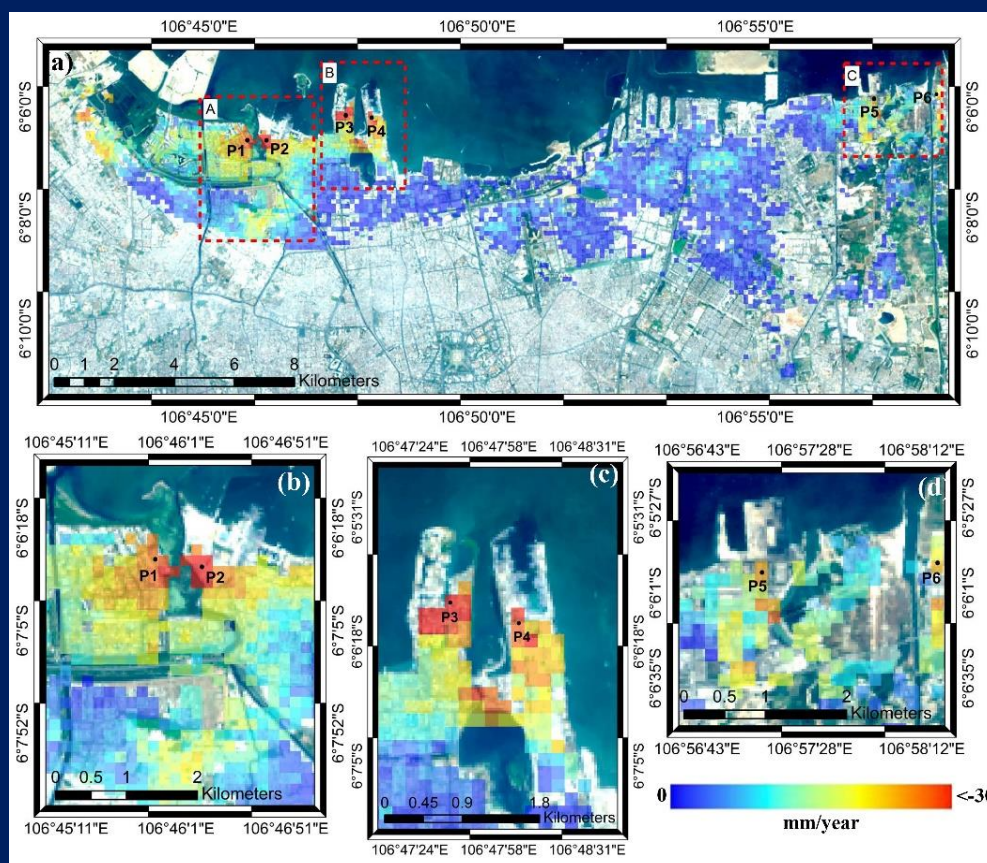
Your use of this PDF, the BioOne Complete website, and all posted and associated content indicates your acceptance of BioOne's Terms of Use, available at www.bioone.org/terms-of-use.

Usage of BioOne Complete content is strictly limited to personal, educational, and non - commercial use. Commercial inquiries or rights and permissions requests should be directed to the individual publisher as copyright holder.

BioOne sees sustainable scholarly publishing as an inherently collaborative enterprise connecting authors, nonprofit publishers, academic institutions, research libraries, and research funders in the common goal of maximizing access to critical research.

Advances in Geospatial Research of Coastal Environments

Guest Editors: Hyung-Sup Jung, Saro Lee, Joo-Hyung Ryu, and Tinwei Cui



Journal of Coastal Research Special Issue #102

An International Forum for the Littoral Sciences
Christopher Makowski, Ph.D.
Editor-in-Chief

Published by



JOURNAL OF COASTAL RESEARCH

An International Forum for the Littoral Sciences

CHEF-HERAUSGEBER

313 S. Braeside Court
Asheville, NC
28803, U.S.A.

EDITOR-IN-CHIEF EMERITUS

Charles W. Finkl
Coastal Education and Research
Foundation, Inc. (CERF)
313 S. Braeside Court
Asheville, NC 28803, U.S.A.
cfinkl@cerf-jcr.com

EDITOR-IN-CHIEF

Christopher Makowski, Ph.D.

Coastal Education and Research Foundation, Inc. (CERF)

Editorial Offices:
7570 NW 47th Avenue
Coconut Creek, FL
33073, U.S.A.

EDITORIAL ASSISTANT

Barbara Russell
Coastal Education and Research
Foundation, Inc. (CERF)
7570 NW 47th Avenue
Coconut Creek, FL 33073, U.S.A.
barbara@cerf-jcr.com

BOOK REVIEW EDITOR

Luciana S. Esteves
Faculty of Science and Technology
Bournemouth University
Dorset, England, U.K.
lesteves@bournemouth.ac.uk

RÉDACTEUR-EN-CHEF

(Business Office, Coconut Creek)
Website: www.CERF-JCR.org
E-mail: cmakowski@cerf-jcr.com

WEB DESIGN & DEVELOPMENT

Jon Finkl
Media Mine
17600 River Ford Drive
Davidson, NC 28036, U.S.A.
jon@mediamine.net

MITHERAUSGEBER

Edward J. Anthony
*Coastal Geomorphology
Dunkerque, France*

Patrick Barnard
*Coastal Geomorphology
Santa Cruz, California*

Natalia Bugajny
*Coastal Geomorphology
Szczecin, Poland*

M. Paula Bunicentro
*Coastal Geomorphology
Buenos Aires, Argentina*

David M. Bush
*Coastal Geology & Hazards
Carrollton, Georgia*

Ilya V. Buynovich
*Coastal Geology
Philadelphia, Pennsylvania*

Javier A. Carrió
*Sediment Processes
Valencia, Spain*

Isik Chun
*Coastal Engineering
Seoul, Republic of Korea*

Vanda Claudino-Sales
*Coastal Dynamics, Dunes
Ceard, Brazil*

Mark Crowell
*Coastal Zone Management
McLean, Virginia*

Omar Defeo
*Sandy Beach Ecology
Montevideo, Uruguay*

Joseph F. Donoghue
*Coastal Morphology & Hazards
Orlando, Florida*

Jean Ellis
*Aeolian Sediment Transport
Columbia, South Carolina*

Hany Elwany
*Coastal Engineering,
Oceanography
La Jolla, California*

Luciana Esteves
*Coastal Flooding & Erosion
Bournemouth, England, UK*

Niki Evelpidou
*Sea-Level Change,
Palaeogeography
Athens, Greece*

Oscar Manuel Ferreira
*Storm Impacts
Faro, Portugal*

Duncan M. FitzGerald
*Sediment Transport
Boston, Massachusetts*

Kazimierz K. Furmańczyk
*Marine Cartography
Szczecin, Poland*

Allen Gontz
*Geophysics, Stratigraphy
San Diego, California*

Gary B. Griggs
*Coastal Engineering & Hazards
Santa Cruz, California*

Pramod Hanamgond
*Coastal Geomorphology
Belgaum, India*

Hans Hanson
*Coastal Protection
Lund, Sweden*

Simon Haslett
*Paleoceanography
Swansea, Wales, UK*

Michael Hilton
*Dune Geomorphology & Ecology
Dunedin, New Zealand*

James R. Houston
*Sea-Level Change
Vicksburg, Mississippi*

Wenrui Huang
*Coastal Hydrodynamics
Tallahassee, Florida*

Federico I. Isla
*Sea-Level Change
Mar Del Plata, Argentina*

Nancy L. Jackson
*Coastal Geomorphology
Newark, New Jersey*

Markes E. Johnson
*Paleoshores, Coastal Sand Dunes
Williamstown, Massachusetts*

Timothy Kana
*Coastal Science & Engineering
Columbia, South Carolina*

Dieter H. Kelletat
*Coastal Geomorphology
Essen/Cologne, Germany*

Joseph T. Kelley
*Sea-Level Change
Orono, Maine*

Björn Kjerfve
*Physical Oceanography, Wetlands
College Station, Texas*

Nobuhisa Kobayashi
*Coastal Engineering
Newark, Delaware*

ASSOCIATE EDITORS

Vladimir N. Kosmynin
*Coral Reefs, Coastal Ecology
Tallahassee, Florida*

Michael J. Lace
*Coastal Landforms & Processes
West Branch, Iowa*

Stephen P. Leatherman
*Barrier Islands, Beach Erosion
Miami, Florida*

Jay Jooyong Lee
*Rip Currents, Coastal Hazards
Busan, Republic of Korea*

Charles Lemckert
*Environmental Fluid Dynamics
Bruce, ACT, Australia*

Hak Soo Lim
*Hydrodynamics, Coastal
Engineering
Busan, Republic of Korea*

Ioannis Liritzis
*Geophysical Proxy Data,
Archaeometry
Rhodes, Greece*

J. Paul Liu
*Sea-Level Change, Deltas
Raleigh, North Carolina*

Michel M. de Mahiques
*Sediment Processes
São Paulo, Brazil*

Gonzalo C. Malvárez
*Beach Morphodynamics
Seville, Spain*

Nobuo Mimura
*Environmental Engineering
Ibaraki, Japan*

Norberto C. Nadal-Caraballo
*Coastal Hazards
Vicksburg, Mississippi*

Fatima Navas
*Coastal Morphodynamics
Seville, Spain*

Robert Nicholls
*Global Climate Change
Southampton, England, UK*

Karl F. Nordstrom
*Coastal Geomorphology
New Brunswick, New Jersey*

Julian Orford
*Gravel Beaches, Storm Events
Belfast, Northern Ireland, UK*

Phil D. Osborne
*Sediment Dynamics
Vancouver, BC, Canada*

Hugh Parker
*Airborne Lidar Bathymetry
Adelaide, SA, Australia*

Charitha B. Pattiaratchi
*Physical Oceanography
Crawley, WA, Australia*

Carlos Pereira da Silva
*Coastal Zone Management
Lisbon, Portugal*

Michael Phillips
*Coastal Geomorphology
Doha, Qatar*

Orrin H. Pilkey, Jr.
*Coastal Geology
Durham, North Carolina*

Nobert P. Psuty
*Coastal Geomorphology
New Brunswick, New Jersey*

Elijah W. Ramsey, III
*Coastal Image Processing
Lafayette, Louisiana*

Tiffany Roberts Briggs
*Coastal Geomorphology
Boca Raton, Florida*

Kirt Rusenko
*Sea Turtles, Dune Restoration
Boca Raton, Florida*

Daniele Scarponi
*Marine Paleocology
Bologna, Italy*

Anja Scheffers
*Coastal Hazards,
Palaeoclimatology
Lismore, NSW, Australia*

Vic Semeniuk
*Mangroves
Perth, WA, Australia*

Douglas J. Sherman
*Coastal & Aeolian Geomorphology
Tuscaloosa, Alabama*

Andrew D. Short
*Coastal Geomorphology
Sydney, NSW, Australia*

Pravi Shrestha
*Coastal Engineering
Irvine, California*

Tom Spencer
*Biogeomorphology
Cambridge, England, UK*

Marcel J.F. Stive
*Coastal Hydrodynamics
Delft, The Netherlands*

COMITÉ DE REDAÇÃO

Vallam Sundar
*Coastal Engineering
Chennai, India*

Ana Teodoro
*Remote Sensing
Porto, Portugal*

E. Robert Thieler
*Marine Geology
Woods Hole, Massachusetts*

Hannes Tönisson
*Coastal Evolution
Tallinn, Estonia*

Arthur C. Trembanis
*Coastal Morphodynamics
Newark, Delaware*

Frank Van Der Meulen
*Coastal Zone Management
Delft, The Netherlands*

Ana Vila Concejo
*Coastal Morphodynamics
Sydney, NSW, Australia*

Ian J. Walker
*Coastal Dunes & Sediments
Tempe, Arizona*

Ping Wang
*Beach Morphodynamics
Tampa, Florida*

Phil J. Watson
*Sea-Level Change
Gosford, NSW, Australia*

Harry F. Williams
*Paleotempestology
Denton, Texas*

Colin D. Woodroffe
*Coastal Geomorphology
Wollongong, NSW, Australia*

Zhaoqing Yang
*Hydrodynamic Modeling
Seattle, Washington*

Robert S. Young
*Coastal Processes
Cullowhee, North Carolina*

Guoliang Yu
*Sediment Transport
Shanghai, China*

Saiyu Yuan
*Water Flow, Sediment Transport
Nanjing, China*



THE JOURNAL OF COASTAL RESEARCH (JCR) (ISSN 0749-0208) IS PUBLISHED BIMONTHLY FOR \$115.00 FOR INDIVIDUAL US CERF MEMBERS, \$125.00 FOR INDIVIDUAL INTERNATIONAL CERF MEMBERS, \$519.00 FOR US INSTITUTIONS, AND \$541.00 FOR INTERNATIONAL INSTITUTIONS BY THE COASTAL EDUCATION AND RESEARCH FOUNDATION, INC. (CERF), 7570 NW 47TH AVENUE, COCONUT CREEK, FL 33073-2723. PERIODICALS POSTAGE PAID AT FORT LAUDERDALE, FL AND ADDITIONAL MAILING OFFICES. **POSTMASTER:** SEND ADDRESS CHANGES TO JOURNAL OF COASTAL RESEARCH, ALLEN PRESS ASSOCIATION MANAGEMENT, P.O. BOX 1897, LAWRENCE, KS 66044-3018.

© 2020 Coastal Education and Research Foundation, Inc. [CERF].

Ⓢ This paper meets the requirements of ANSI/NISO Z39.48-1992 (Permanence of Paper).



JOURNAL OF COASTAL RESEARCH

An International Forum for the Littoral Sciences

Supporting Scientific Institutions



- Consorzio Nazionale Interuniversitario per le Scienze del Mare (Co.N.I.S.Ma.) [Rome, Italy; www.conisma.it/]
- Delft University of Technology [Department of Hydraulic Engineering, Delft, The Netherlands; <http://www.citg.tudelft.nl/over-faculteit/afdelingen/hydraulic-engineering/>]
- Duke University [Earth and Ocean Sciences Division, Durham, North Carolina, U.S.A.; <https://nicholas.duke.edu/marinelab>]
- Griffith University [Center for Infrastructure Engineering and Management, Southport, Queensland, Australia; <https://www.griffith.edu.au/>]
- Ibaraki University [Center for Water Environmental Studies, Mito, Japan; <http://www.cwes.ibaraki.ac.jp/>]
- International Geographical Union (IGU) [Commission on Coastal System (CCS); <http://www.igu-ccs.org/>]
- Royal Belgian Institute of Natural Sciences [Management Unit of the North Sea Mathematical Models (MUMM), Brussels, Belgium; <http://www.mumm.ac.be/EN/index.php>]
- Rutgers University [Institute of Marine and Coastal Sciences (IMCS), New Brunswick, New Jersey, U.S.A.; <http://marine.rutgers.edu/main/>]
- Universidad de la República [Marine Science Unit, Montevideo, Uruguay; <http://www.imber.info/Science/National-Network/URUGUAY>]
- Universidade Nova de Lisboa [e-Geo Center for Geographical and Regional Planning Studies, Lisbon, Portugal; <http://e-geo.fcsh.unl.pt/>]
- University of California, Santa Cruz [Institute of Marine Sciences, Santa Cruz, California, U.S.A.; <http://ims.ucsc.edu/>]
- University of Delaware [School of Marine Science and Policy, Newark, Delaware, U.S.A.; <http://www.ocean.udel.edu>]
- University of Maine [Climate Change Institute, Orono, Maine, U.S.A.; <http://climatechange.umaine.edu/>]
- University of Sydney [Coastal Studies Unit, Sydney, New South Wales, Australia; <http://sydney.edu.au/>]
- University of Szczecin [Institute of Marine and Coastal Science, Szczecin, Poland; <http://www.wnoz.ztikm.szczecin.pl/en/1/inom/structure/>]
- University of Ulster [Environmental Sciences Research Institute, Coleraine, Northern Ireland; <http://www.ulster.ac.uk/es/research/>]
- University of Wales, Trinity Saint David [Swansea Metropolitan University, Mount Pleasant, Swansea, South Wales, U.K.; <http://www.uwtsd.ac.uk/>]
- U.S. Army Corps of Engineers [Coastal and Hydraulics Laboratory (CHL), Vicksburg, Mississippi, U.S.A.; <http://chl.erdc.usace.army.mil/>]
- U.S. Geological Survey [National Wetlands Research Center, Lafayette, Louisiana, U.S.A.; <http://www.nwrc.usgs.gov/>]

Aims and Scope of the *Journal of Coastal Research (JCR)*

Journal of Coastal Research (JCR), an International Forum for the Littoral Sciences, is dedicated to all aspects of coastal research. These include geology, biology, geomorphology (physical geography), climate, littoral oceanography, hydrography, coastal hydraulics, environmental (resource) management, engineering, and remote sensing. Although each field functions effectively within its own purview, the cross-disciplinary nature of coastal studies requires familiarity with other fields as well. Hence, the scope of topics is necessarily broad in order to address the complexity of coastal biophysical and socio-economic interactions. Because of the wide range of interrelated topics, the journal invites original contributions and manuscripts dealing with theory, methodology, techniques, and field or applied topic studies on interdisciplinary coastal issues.

The journal encourages the dissemination of knowledge and understanding of the coastal zone by promoting cooperation and communication between specialists in different disciplines. Natural scientists, for example, are encouraged to collaborate with professionals in other fields to prepare contributions relating to the coastal zone that foster increased appreciation of coastal environments and processes. By means of this journal, with its scholarly and professional papers, systematic review articles, book and symposia reviews, communications and news, and special topical issues, an international forum for the development of integrated coastal research is provided.

Advertising, Editorial, and Subscription Information

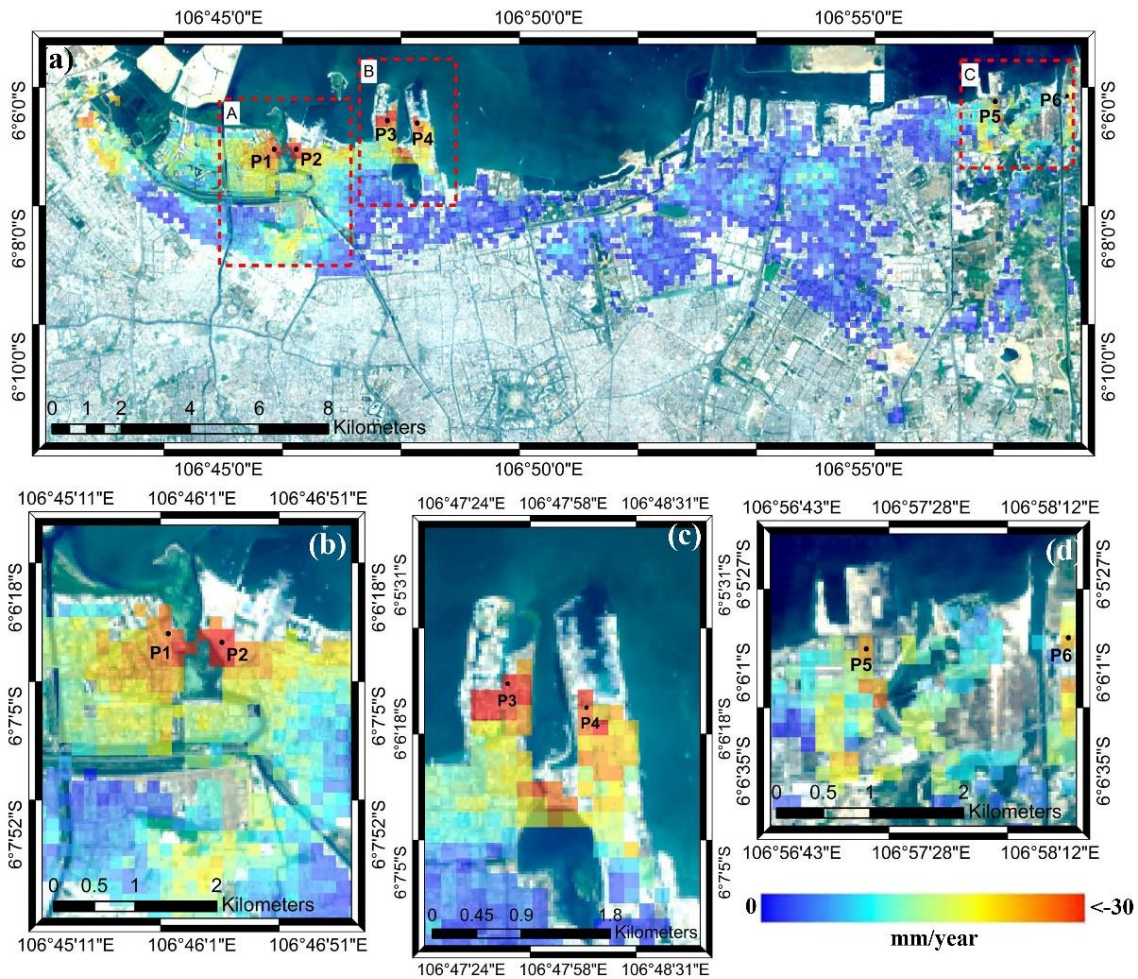
Advertising and Editorial Office: All advertising and editorial correspondence should be sent to Dr. Chris Makowski, Editor-in-Chief, *Journal of Coastal Research*, 7570 NW 47th Avenue, Coconut Creek, FL 33073, U.S.A. PHONE: (+1) 954-899-8416. E-MAIL: cmakowski@cerf-jcr.com WEBSITE: www.cerf-jcr.org

Subscription Information: The *Journal of Coastal Research* is a bimonthly publication. Calendar-year (2020) print and online subscription prices for the JCR are: \$115.00 for US CERF members / \$125.00 for International CERF members (\$95.00 for online only), and \$519.00 for US institutions / \$541.00 for International institutions (\$437.00 for online only). Additional surface charges may apply to subscribers located outside of the USA. For additional membership and subscription forms and information, please go to www.cerf-jcr.org. To obtain a membership or subscription form by mail, please send request to *Journal of Coastal Research*, P.O. Box 7065, Lawrence, KS 66044. Back Issues and Special Issues of the JCR, when available, can be directly requested at: cerf.jcr@gmail.com.

Abstracting Information: The *Journal of Coastal Research (JCR)* is currently surveyed in: *Web of Science (WoS) Core Collection* / *Web of Knowledge (Clarivate Analytics)*; *Science Citation Index Expanded*; *SCOPUS (Elsevier)*; *BioOne Complete*; *JSTOR*; *EBSCO*; *ProQuest*; *Charlesworth*; *BIOSIS Previews*; *Zoological Record*; *Biological Abstract*; *H.W. Wilson Company*; *Thomson Reuters (ISI)*; *Cabells Scholarly Analytics*; *Essential Science Indicators*; *Chemical Abstracts Service (CAS)*; *Gale Group (Gale / Cengage Learning)*; *Copyright Clearance Center, Inc. (CCC)*; *Current Contents - Physical, Chemical & Earth Sciences*; and *Current Contents - Agriculture, Biology & Environmental Sciences*.



COVER PHOTOGRAPH



Mean vertical deformation map in Jakarta coastal area. The mean vertical deformation map above was generated using Sentinel-1 SAR data images between 2017-2020 using StaMPS algorithm. The mean vertical deformation map was overlaid with the depicted image from natural band combination (B4, B3, B2) of Landsat 8 OLI/TIRS C1 Level-1 taken on September 11, 2019, acquired by USGS.

Journal of Coastal Research (JCR) Special Issue #102

Advances in Geospatial Research of Coastal Environments

TABLE OF CONTENTS

Editorial: Special Issue on “Advances in Geospatial Research of Coastal Environments” Hyung-Sup Jung, Saro Lee, Joo-Hyung Ryu, and Tingwei Cui	vi-xiii
Estimation of Aboveground Vegetation Nitrogen Contents in the Yellow River Estuary Wetland Using GaoFen-1 Remote Sensing Data Jianbu Wang, Guangbo Ren, Zhaoyang Lin, Andong Wang, Yabin Hu, Xiaomin Li, Peiqiang Wu, Yi Ma, and Jie Zhang.....	1-10
Multi-scale Spectral-Spatial Remote Sensing Classification of Coral Reef Habitats Using CNN-SVM Jiaxin Wan and Yi Ma	11-20
High-accuracy Remote Sensing Water Depth Retrieval for Coral Islands and Reefs Based on LSTM Neural Network Xiao-Min Li, Yi Ma, Zi-Hao Leng, Jie Zhang, and Xi-Xi Lv	21-32
A Method for Classifying Land and Ocean Area by Removing Sentinel-1 Speckle Noise Hyeong-Gyeong Han, and MOUNG-JIN LEE.....	33-38
Analysis of Trends in Marine Water Quality Using Environmental Impact Assessment Monitoring Data : A Case Study of Busan New Port Sunmin Lee, Eojin Lee, Heon Seok Yoo, and MOUNG-JIN LEE.....	39-46
Exploring Changes in Coastal Environment Policy Using Text Mining: A Case Study in South Korea Nam-Wook Cho and MOUNG-JIN LEE.....	47-53
Determine the Stumpf 2003 Model Parameters for Multispectral Remote Sensing Shallow Water Bathymetry Jinshan Zhu, Peng Hu, Lulu Zhao, Lei Gao, Jiawei Qi, Ya Zhang, and Ruifu Wang	54-62
The Effect of Laver-farming on the Distribution of Copepod Community in the West Coast of Korea Seong-Ki Kim, Jeong-Cheol Kim, and Jong-Yun Choi.....	63-68
Changing Distributions of Zooplankton Communities in a Coastal Lagoon in Response to Rainfall Seasonality Jong-Yun Choi, Jeong-Cheol Kim, and Seong-Ki Kim.....	69-74
Land Subsidence Measurement of Jakarta Coastal Area Using Time Series Interferometry with Sentinel-1 SAR Data Wahyu Luqmanul Hakim, Arief Rizqiyanto Achmad, Jinah Eom, and Chang-Wook Lee	75-81
Optical Remote Sensing Ship Image Classification Based on Deep Feature Combined Distance Metric Learning Shuangmei Zhao, Yongjie Xu, Wenjing Li, and Haitao Lang.....	82-87

Characteristics of Geological Lineaments along the Eastern Coast of the Korean Peninsula: A Statistical Approach Taehyung Kim, Young-Seog Kim, and Hong-Jin Lee.....	88-100
Topographical Change in Coastal Areas Arising from Soil Erosion in the Riparian Zone Jeong-Cheol Kim, Hyeon-Jeong Lee, Jong-Yun Choi, Seong-Ki Kim, and Hyung-Sup Jung.....	101-106
Distribution and Utilization Plan of Reclaimed Lands (RLs) as Waterfowl Habitat on the South Coast of Korea Seong-Ki Kim, Jeong-Cheol Kim, and Jong-Yun Choi.....	107-112
An Algorithm for Sea Ice Drift Retrieval Based on Trend of Ice Drift Constraints from Sentinel-1 SAR Data Xi Zhang, Yixun Zhu, Jie Zhang, Junmin Meng, Xiaona Li, and Xingxing Li	113-126
Observation of Diffusive Methane Emission from Holocene Mud Deposits on the Continental Shelf Offshore Southeastern Korea Jong-Hwa Chun, Yuri Kim, Ji-Young Choi, Young-Jun Kim, Hong-Jin Lee, and Yong Hoon Kim.....	127-136
Oil Spill Detection of Kerch Strait in November 2007 from DualPolarized TerraSAR-X Image Using Artificial and Convolutional Neural Network Regression Models Won-Kyung Baek, Hyung-Sup Jung, and Daeseong Kim.....	137-144
Coastal Image Captioning Qiaoqiao Yang, Guangxing Wang, Xiaoyu Zhang, Christos Grecos, and Peng Ren	145-150
Coastal Image Classification under Noisy Labels Xiaoxiao Tai, Guangxing Wang, Christos Grecos, and Peng Ren.....	151-156
Geostatistical Classification of Intertidal Surface Sediments Using Log-ratio Transformation and High-resolution Remote Sensing Imagery No-Wook Park and Dong-Ho Jang.....	157-165
Ship Matching Using Convolutional Neural Network in Multi-source Synthetic Aperture Radar Images Lihui Niu and Haitao Lang.....	166-175
Remote Sensing Classification of Aquatic Vegetation in Ulansuhai Lake Based on Discrete Particle Swarm Optimization Algorithm Mengmeng Cao, Song Qing, Yuchunzi Du, Ruiqiang Yuan, Buri Shun, Yanling Hao, and Wenjing Zhao	176-186
High-Resolution Seismic Stratigraphy Offshore Haeundae Beach in Busan, South Korea Dong-Lim Choi, Dong-Hyeok Shin, Jae-Youll Jin, Yong-Kuk Lee, and Byung-Cheol Kum.....	187-193
Absolute Salinity Measurement Based on Microfiber Coaxial Mach-Zehnder Interferometer Yu Li, Jing Wang, and Shanshan Wang	194-201
Machine Learning Approaches for Quantifying <i>Margalefidinium Polykrikoides</i> Bloom from Airborne Hyperspectral Imagery Jisun Shin, Soo Mee Kim, and Joo-Hyung Ryu	202-207
Comparison of Input Image Dimensions for Ship Detection from KOMPSAT-5 SAR Image Using Deep Neural Network Wook Park, Won-Kyung Baek, Joong-Sun Won, Hyung-Sup Jung.....	208-217

Land Subsidence Measurement in Reclaimed Coastal Land: Noksan Using C-Band Sentinel-1 Radar Interferometry Arip Syaripudin Nur, Arief Rizqiyanto Achmad, and Chang-Wook Lee	218-223
Classification of Green Tide at Coastal Area Using Lightweight UAV and only RGB Images Keunyong Kim, Bum-Jun Kim, Euihyun Kim, and Joo-Hyung Ryu	224-231
A Study on Seasonal Dynamics of Suspended Particulate Matter in Korean Coastal Waters Using GOCI Yoon-Kyung Lee, Jong-Kuk Choi, and Hee Jun Lee	232-245
Mapping Oyster Reef Distribution Using Kompsat-2/3 and Linear Spectral Unmixing Algorithm: A Case Study at Hwangdo Tidal Flat Kye-Lim Kim and Joo-Hyung Ryu	246-253
Storage Class Memory Based Hybrid Memory System for Practical Remote Sensing Sungmin Koo, Jungmin Seo, Yujae Song, and Seungjae Baek	254-260
Structural Analysis of a Fault-related Anticline in the Southwestern Gyeonggi Massif, Korea Using an Unmanned Aerial Vehicle and Field Surveys: The Role of Rejoining Splays in a Duplex-like Structure Inho Kim, Seung-Ik Park, and Hong-Jin Lee	261-270
Remote Sensing of Spatial-temporal Variation of Chlorophyll-a in the Jiaozhou Bay Using 32 Years Landsat Data Ming Wu, Yongfang Zhao, Li'e Sun, Jue Huang, Xiaohua Wang, and Yue Ma	271-279
An Arctic Gridded Sea Surface Temperature Product Constructed from Spaceborne Radiometer Data Weifu Sun, Jie Zhang, Junmin Meng, Yuheng Li, and Kaixiang Cao	280-286
Assessment of the Ecological Security of the Coastal Zone of the Guangdong/Hong Kong/Macao Greater Bay Area Wenjing Zhao, Guirong Zhao, Jing Yang, Min Xu, and Jiefeng Kou	287-295
Deriving Natural Coastlines Using Multiple Satellite Remote Sensing Images Changying Wang, Jungang Yang, Jinhua Li, and Jialan Chu	296-302
Remote Sensing of Suspended Particulate Matter in Optically Complex Estuarine and Inland Waters Based on Optical Classification Yalei Yue, Song Qing, Ruixiang Diao, and Yanling Hao	303-317
Automatic Extraction of Green Tide Using Dual Polarization Chinese GF-3 SAR Images Haifei Yu, Changying Wang, Yi Sui, Jinhua Li, and Jialan Chu	318-325
Geolocation Accuracy Evaluation of GF-4 Geostationary High-Resolution Optical Images over Coastal Zones and Offshore Areas Yunhong Wei, Ziyue Zhang, Bing Mu, Ying Li, Quanbin Wang, and Rongjie Liu	326-333
Study on Mangrove of Maximum Likelihood: Reclassification Method in Xiezhou Bay Yan Liao, Yaqin Liao, Wenjing Zhao, Qinghua Chen, Ting Li, and Tianjian Yang	334-343

COASTAL EDUCATION AND RESEARCH FOUNDATION (CERF)

7570 NW 47th Avenue
Coconut Creek, FL 33073, U.S.A.

Officers of the Foundation

Founded in 1983 by: Charles W. Finkl, Sr. (Deceased),
Charles W. Finkl, Jr., Rhodes W. Fairbridge (Deceased),
and Maurice L. Schwartz (Deceased)

President &

Executive Director:

Charles W. Finkl

Secretary:

Heather M. Vollmer

Senior Vice President &

Assistant Director:

Christopher Makowski

Executive Assistant:

Barbara Russell

CERF-JCR Regional Vice Presidents

North America

Gary B. Griggs
James R. Houston
Timothy W. Kana
Norberto C. Nadal-Caraballo

Western Europe

Luciana S. Esteves
Carlos Pereira da Silva
Marcel J.F. Stive

Eastern Europe

Niki Evelpidou
Kazimierz K. Furmanczyk

Oceania

Charles Lemckert
Anja Scheffers
Vic Semeniuk
Andrew D. Short

Southeast Asia

Hak Soo Lim
Nobuo Mimura

South America

Vanda Claudino-Sales
Omar Defeo

Middle East and N. Africa

Michael Phillips

Board of Directors (Trustees)

Vanda Claudino-Sales	Stephen P. Leatherman	Vic Semeniuk
Charles W. Finkl	Charles Lemckert	Douglas J. Sherman
Duncan M. FitzGerald	Gonzalo C. Malvárez	Andrew D. Short
Gary B. Griggs	Christopher Makowski	Daniel J. Stanley
James R. Houston	Carlos Pereira da Silva	Marcel J.F. Stive
Robert Huff	Michael Phillips	Phil J. Watson
Timothy W. Kana	Norbert P. Psuty	
Joseph T. Kelley	Elijah W. Ramsey, III	

Lifetime Members

Camilo M. Botero	Victor V. Klemas	Nelson G. Rangel-
David M. Bush	Tetsuya Kusuda	Buitrago
Frédéric Bouchette	Stephen P. Leatherman	Yoshiki Saito
Yong-Sik Cho	Charles Lemckert	Anja Scheffers
Insik Chun	J. Paul Liu	Andrew D. Short
Nicholas K. Coch	Gonzalo C. Malvárez	Rodolfo Silva
Hany Elwany	Ashish J. Mehta	Jean-Daniel Stanley
Kazimierz K. Furmanczyk	Norberto C. Nadal-	Marcel J.F. Stive
Allen Gontz	Caraballo	Charles Thibault
Gary B. Griggs	Fatima Navas	Erik van Wellen
Carl H. Hobbs, III	Philip D. Osborne	Ya Ping Wang
James R. Houston	Michael Phillips	Allan T. Williams
Paul S. Kench	Orrin H. Pilkey, Jr.	Robert S. Young
Björn Kjerfve	Norbert P. Psuty	Wei Zhang

Patron Members

Lindino Benedet	John W. Jenson
Georges Chapalain	Timothy W. Kana

CERF-JCR Society Information

The Coastal Education and Research Foundation (CERF) is a non-profit research society dedicated to the advancement of the coastal sciences and serves as the official publisher of the international *Journal of Coastal Research* (JCR). CERF-JCR is devoted to the multi-disciplinary study of complex problems related to the coastal zone. Our purpose is to help in the translation and interpretation of coastal issues for the public and to assist professional and academic research programs by supporting and encouraging field and laboratory studies on a local, national, and global basis. Through printed scientific publications, current online content, and renowned international symposiums, CERF-JCR brings accurate information to both the public and researchers alike on all aspects of coastal issues in an effort to maintain and improve the quality of shoreline resources.

The *Journal of Coastal Research* (JCR) is one of the leading international journals for coastal studies and processes, and is published bi-monthly by the Coastal Education and Research Foundation (CERF). By covering the entire field of coastal research, the JCR encompasses all subjects relevant to natural and engineered environments (*i.e.* freshwater, brackish, or marine) and the protection/management of their resources in the vicinity of coastlines around the world. Even though the journal broadly focuses on immediate shoreline zones, the JCR also embraces those coastal environments that either reach some indefinite distance inland or that extend seaward beyond the outer margins of the sublittoral (neritic) zone. We encourage you to visit www.cerf-jcr.org for more information and invite you all to be a part of our CERF-JCR coastal research society.



CERF-JCR MEMBERSHIP

Society members are those individuals that support the aims of CERF and the JCR. More information is available at: www.cerf-jcr.org. CERF-JCR Memberships are available in different categories with certain privileges and can be viewed at: <https://cerf.allenpress.com/cerf/MEMBERSHIP.aspx>

Subscription information is available upon request by writing to: cerf.jcr@gmail.com. The CERF-JCR subscriptions office is located at: Allen Press, Inc., P.O. Box 1897, Lawrence, KS 66044, U.S.A.

Editor-in-Chief

Christopher Makowski, Ph.D.

Dr. Christopher Makowski is the Senior Vice President and Co-Executive Director of the Coastal Education and Research Foundation (CERF), the official publisher of the international *Journal of Coastal Research* (JCR). He received B.Sc. (Marine Biology), M.Sc. (Marine Ecosystem Diversity), and Ph.D. (Coastal Geoscience and Remote Sensing of Biogeomorphological Resources) degrees from Florida Atlantic University of Boca Raton, Florida, USA, and has worked for over 25 years in the coastal research community, holding titles of Assistant Director (Coastal Planning & Engineering's Marine Science and Biological Research Department), Principal Marine Scientist (Collier County, Florida, USA), and Senior Advisor (International Coastal Symposium [ICS]). Dr. Makowski has published numerous peer reviewed papers, authored multiple chapters, and co-edited various volumes in Springer's Coastal Research Library (CRL) Series and Encyclopedia of Earth Sciences Series (EESS). In addition to these accomplishments, he is professionally recognized by the American Academy of Underwater Sciences (AAUS) and is certified as a Master Scuba Diver Trainer through the Professional Association of Diving Instructors (PADI), having logged over 2,000 underwater dives on six different continents. Other professional registrations, certifications, and accreditations include: Coastal Education and Research Foundation (CERF) Board of Directors (Trustees), BioOne Board of Directors, International Society for Reef Studies (ISRS) Member, Florida Association of Environmental Professionals (FAEP) Chapter Member, American Academy of Underwater Sciences (AAUS) Registered Diving Safety Officer, American Association for the Advancement of Science (AAAS) Member, National Marine Fisheries Service (NMFS) Certified Marine Mammal and Protected Species Observer, Professional Association of Diving Instructors (PADI) Open Water Scuba Diver Instructor, PADI Enriched Air Nitrox Specialty Instructor, Emergency First Responder (CPR/FirstAid/AED) Instructor, PADI Specialty Underwater Photographer Instructor, and Divers Alert Network (DAN) Sustaining Member.

For more information, please visit Dr. Makowski's home page at: www.cerf-jcr.org

International Coastal Symposium (ICS) Official Meeting of CERF-JCR

The International Coastal Symposium (ICS) was originally set up by Per Bruun (deceased) and Charles W. Finkl as the official meeting of the Coastal Education and Research Foundation (CERF) and the *Journal of Coastal Research* (JCR), with one of the first meetings being held in Hilton Head, South Carolina, in 1993. After the repeated success of these meetings, CERF-JCR moved the ICS to an international platform by holding these conferences in conjunction with local sponsors in the United States, Australia, Brazil, Iceland, New Zealand, Northern Ireland, Poland, Portugal, and South Korea. The ICS brings together delegates from all over the world to collaborate and discuss the most current coastal research studies and projects. During the ICS 2014, which was held in Durban, South Africa, a grand celebration took place to mark the 30th Anniversary of CERF and the JCR. For more information, please visit www.cerf-jcr.org.

Journal of Coastal Research (JCR)

SPECIAL ISSUE NO. 102 (pages 1-343)
ISSN 0749-0208

FALL 2020

