



Does the presence of Oil and gas infrastructure potentially increase risk of harvest in northern bobwhite?

Authors: Tanner, Evan P., Elmore, R. Dwayne, Davis, Craig A., Fuhlendorf, Samuel D., Dahlgren, David K., et al.

Source: Wildlife Biology, 22(6) : 294-304

Published By: Nordic Board for Wildlife Research

URL: <https://doi.org/10.2981/wlb.00254>

BioOne Complete (complete.BioOne.org) is a full-text database of 200 subscribed and open-access titles in the biological, ecological, and environmental sciences published by nonprofit societies, associations, museums, institutions, and presses.

Your use of this PDF, the BioOne Complete website, and all posted and associated content indicates your acceptance of BioOne's Terms of Use, available at www.bioone.org/terms-of-use.

Usage of BioOne Complete content is strictly limited to personal, educational, and non - commercial use. Commercial inquiries or rights and permissions requests should be directed to the individual publisher as copyright holder.

BioOne sees sustainable scholarly publishing as an inherently collaborative enterprise connecting authors, nonprofit publishers, academic institutions, research libraries, and research funders in the common goal of maximizing access to critical research.

Does the presence of oil and gas infrastructure potentially increase risk of harvest in northern bobwhite?

Evan P. Tanner, R. Dwayne Elmore, Craig A. Davis, Samuel D. Fuhlendorf, David K. Dahlgren, Eric T. Thacker and Jeremy P. Orange

E. P. Tanner (evan.tanner@okstate.edu), R. D. Elmore, C. A. Davis, S. D. Fuhlendorf and J. P. Orange, Dept of Natural Resource Ecology and Management, Oklahoma State Univ., Stillwater, OK 74078, USA. – D. K. Dahlgren, Jack H. Berryman Inst., Dept of Wildland Resources, Utah State Univ., Logan, UT, USA. – E. T. Thacker, Dept of Wildland Resources, Utah State Univ., Logan, UT, USA

Beyond organisms experiencing direct impacts (mortality) from the presence of anthropogenic features, interactive relationships may exacerbate the effects of anthropogenic disturbance within the context of these features. For example, mortality risk may be affected by the road infrastructure associated with energy development by influencing space use of predators including human hunters. To assess these relationships, we conducted research on northern bobwhite *Colinus virginianus* across a hunted and non-hunted area of Beaver River Wildlife Management Area, Oklahoma, using radio-telemetry from 2012–2015. We found that bobwhite mortality risk decreased as the distance from primary roads (m) increased across weeks (hazard ratio [HR] = 1.008, 95% confidence interval [CI] = 1.0003 to 1.0013). The interaction between unit (hunted and non-hunted) and distance from primary roads was not significant (HR = 1.00, 95% CI = 0.999 to 1.001) indicating that hunting pressure was not a likely explanation for the observed decrease in survival related to primary roads. Bobwhite on the hunted unit avoided exposed soil/sparse vegetation ($\beta = -0.01$, CI = -0.02 to -0.002) and bare ground ($\beta = -0.01$, CI = -0.02 to -0.002) more than bobwhite on the non-hunted unit, however these were weak relationships. No other differences in bobwhite space use were detected related to hunting. Though we were limited to estimating theoretical rather than empirical amounts of hunting pressure during our study, we were unable to detect any negative compounding effects of anthropogenic development and hunting pressure on bobwhite ecology during the hunting season.

Habitat loss has been suggested as the primary contributor to biodiversity loss in North America (Pimm and Raven 2000). This is likely most evident within native prairie rangelands, which have been the most altered biome in North America (Samson and Knopf 1994, Askins et al. 2007). Such extensive losses of these native ecosystems have resulted in extensive declines of many flora and fauna (Samson and Knopf 1994), though biodiversity loss may be most evident in the avian guilds associated with these systems (Sauer et al. 2014). Though there are a number of anthropogenic causes that have contributed (Manning 1995), increases in energy development have recently led to significant changes (i.e. fragmentation) and a continued trend in the loss of area (Kuvlesky et al. 2007, Gilbert and Chalfoun 2011, Allred et al. 2015). This trend is projected to continue, and increases in infrastructure related to future energy demands will make temperate grasslands one of the most impacted ecosystems based on this anthropogenic development (McDonald et al.

2009). However, the impact of this anthropogenic development may vary both spatially and temporally (Loss 2016), and understanding what influences this variability will continue to be important as energy demands increase.

Energy development and its related infrastructure have existed in much of North America within the context of recent history (Braun et al. 2002). However, technological advances and increased demand in local and global markets may lead to wildlife coping with unprecedented levels of this development (Arnett et al. 2007, Johnson and Lefebvre 2013, Souther et al. 2014). Effects of energy development on wildlife are complex and extensive, and can be related to increases in noise and light pollution (Barber et al. 2010, Blickley et al. 2012, Shannon et al. 2016, Swaddle et al. 2015), direct mortality from collisions (Kunz et al. 2007, Loss et al. 2013), and behavioral changes (i.e. shifts in space use and/or movement patterns) from activity and habitat fragmentation (Slater and Smith 2010, Hovick et al. 2014, Winder et al. 2014, Ludlow et al. 2015, Mutter et al. 2015).

Within the context of prairie avifauna, past research has focused on assessing the impacts of energy development on resident ground nesting Galliformes. This is because their life history strategies could make them more vulnerable to human

This work is licensed under a Creative Commons Attribution 4.0 International License (CC-BY) <<http://creativecommons.org/licenses/by/4.0/>>.

development when compared to migratory species (Storch 2007, Hovick et al. 2014, Winder et al. 2014). Oil and gas structures have been shown to have the largest impact on behavioral responses of grouse species, while roads associated with these structures have also been shown to influence their behavior (Pitman et al. 2005, Hagen et al. 2011, Blickley et al. 2012). Furthermore, wind energy development can alter behavioral patterns and nesting/brooding success of prairie grouse species (Lebeau et al. 2014, Winder et al. 2014). Most other Galliformes have received little attention with regards to responses to anthropogenic development. In a notable exception, Dunkin et al. (2009) reported that northern bobwhite *Colinus virginianus* (hereafter: bobwhite) tended to avoid fences and were attracted to roads, while they exhibited no behavioral response to oil and power line structures.

Northrup and Wittemyer (2013) characterized the observed and potential impacts of energy development on wildlife species, identifying the importance of understanding compounding factors that can lead to wildlife impacts when increased development occurs. More specifically, they listed increased hunting pressure as an identified impact of oil/gas development on wildlife populations. Though increased hunting pressure is an identified impact, it is the least studied impact among research to date (Northrup and Wittemyer 2013). The interaction between anthropogenic development and hunting pressure could exacerbate impacts on wildlife if game species are attracted to roads or linear features (Dunkin et al. 2009) or if development is focused on public lands where hunting pressure is high. For instance, the infrastructure that comes with energy development on public hunting lands (roads, well pads, etc.) could increase access for hunters which in turn may increase harvest-induced mortality. Such a change in space use and behavior by hunters can increase the potential for additive harvest in bobwhite populations (Roseberry 1979, Williams et al. 2000). Thus, regional patterns in anthropogenic development on public lands could have unintended negative consequences related to hunting that may ultimately affect population levels (Williams et al. 2004).

In this study, we sought to determine if oil/gas development and associated infrastructure affected non-breeding season ecology (i.e. survival, space use, and movement patterns) of bobwhite on hunted and non-hunted areas. As we were interested in identifying compounding effects between hunting pressure and anthropogenic development, we focused our study on the non-breeding season. Our objectives were to: 1) determine if weekly mortality risk differed between hunted and non-hunted bobwhite in relation to anthropogenic features, 2) determine if bobwhite covey (wintering groups with > 1 individual) space use was influenced by anthropogenic features and/or hunting, and 3) determine if bobwhite covey movement was influenced by hunting.

Methods

Study area

We conducted our research at the Beaver River Wildlife Management Area (WMA) which is located in Beaver County, OK (36°50'21.62"N, 100°42'15.93"W). The total area of the WMA is approximately 11 315 ha, however for

our research, the WMA was divided into two separate units (Beaver River Unit 6824 ha; McFarland Unit 4491 ha), in which the Beaver River Unit was exposed to hunting pressure while the McFarland Unit was not. Unit boundaries were separated by barbed wire fencing and had signs indicating whether or not bobwhite hunting was permitted based on our study design. Both units primarily consist of upland areas dominated by tivolo fine sand soils and a floodplain dominated by lesho silty clay loam. Areas bordering the WMA consisted of private property with land use practices that included grazed rangelands, Conservation Reserve Program (CRP) enrollment and row crops. The only non-private property that bordered the WMA was a city park on the eastern boundary, which was used for off-road vehicle recreation and hiking. We were unable to determine if adjacent private properties experienced hunting pressure. However, hunting on these properties would not have occurred without consent from landowners and no hunting was permitted within the boundary of the city park.

Anthropogenic features on the WMA consisted of roads, power lines, buildings and oil/gas structures. Power lines were not included in our analyses as very few of these features existed within our study area and bobwhite rarely encountered them (density of 0.08/km²). Overall density of roads was 2.12 km/km². Additionally, there were six buildings (0.05 structures/km²) and 94 oil/gas structures (0.83 structures/km²) on our study area. A study area map illustrating the spatial orientation of roads, buildings, oil/gas structures, and hunting units at Beaver River WMA is given in the supplementary material (Supplementary material Appendix 1 Fig. A1).

During our study, quail hunting season began on 10, 9 and 8 November in 2012, 2013 and 2014 respectively and ended on February 15 of the following year for all three years. Hunting activity was recorded for all two week periods during our study except weeks 8–9 of each year (Christmas and New Year holiday). However we suspect there was hunting activity occurring during these periods though technicians were not available to verify.

During the course of the study, annual precipitation was 34.44, 50.29 and 39.42 cm in 2012, 2013 and 2014 respectively, while the long term (1895–2014) average annual precipitation for this region is 49.63 cm. Climate data were obtained from the Beaver Mesonet station (Brock et al. 1995, McPherson et al. 2007). At no time were our two study units out of drought conditions (The National Drought Mitigation Center, Lincoln, Nebraska, USA).

Vegetation map development

An unsupervised maximum combined vegetation classification method was used to develop our vegetation map from 2 m resolution satellite imagery using ArcMap 10.1. Aerial imagery was collected in July 2013 when cloud cover was minimized. This method resulted in 65 different classes which were reclassified into 10 ecologically meaningful cover types based on field observations and 214 ground-truthed points. The primary cover types that comprised both units were: mixed shrub (consisting of sand plum *Prunus angustifolia*, fragrant sumac *Rhus aromatic*, and sand sagebrush *Artemisia filifolia*), sand sagebrush, mixed grass (little bluestem

Schizachyrium scoparium, switchgrass *Panicum virgatum*, bromes [*Bromus* spp.; non-native], short-grass/yucca *Yucca glauca*, sparse vegetation/exposed soil, bare ground, salt cedar (*Tamarix* spp.; non-native), open water, developed housing, and food plots (primarily winter wheat *Triticum aestivum*). A more detailed description of plants found within these cover types is described in Tanner et al. (2015).

Radio-telemetry

Bobwhite were captured between 2012–2015 using walk-in funnel traps (Stoddard 1931). We attached a necklace-style radio transmitter weighing 6 g if a bird met a minimum body mass requirement of 130 g. We located radio-marked individuals a minimum of three times per week. Locations of individuals were determined using the homing method (White and Garrot 1990). We homed in on individuals to within 15 m and recorded the distance and azimuth to the actual bird location as well as recording the Universal Transverse Mercator (UTM) coordinates of the observer with a GPS. Individuals and coveys were located at different times across days to capture any variability of diurnal patterns throughout the non-breeding season. When a mortality signal occurred (12-h signal), we located the collar and confirmed the mortality. Mortalities were categorized as avian, mammalian, unknown, or other based on evidence at the mortality site. A detailed explanation of radio-tracking methods is described in Tanner et al. (2015). All trapping and handling methods were approved by the Oklahoma State University's Institutional Animal Care and Use Committee Permit (no. AG-11-22).

To estimate the accuracy of our telemetry locations, we conducted a telemetry error trial in which each researcher ($n = 12$) conducted 10 repeated telemetry trials. These trials consisted of individuals estimating the location of a radio transmitter with a known location via homing techniques across 10 random locations within the WMA. The estimated telemetry error during the course of our study was 8.97 m (95% CI = 6.48 to 11.46).

For all analyses in our study, if an individual or covey changed units (hunted or non-hunted) during our monitoring period, we censored that individual or covey from our study. With respect to our survival analysis, two, ten, and nine individuals changed units during the 2012–2013, 2013–2014 and 2014–2015 non-breeding seasons, respectively. For our space use analysis, only one covey had an estimated home range that overlapped between units.

Andersen–Gill models

We used Andersen–Gill (AG) models to estimate hazard rates for bobwhite across both units (Andersen and Gill 1982) using the survival package in program R (ver. 3.1.1, <www.r-project.org>). We used AG models due to monitoring gaps and left-truncated data entry for individuals (based on staggered entry design, Pollock et al. 1989). This model is similar to a Cox proportional hazard model (CPHM), however it allows for time-varying covariates when estimating hazard rates (Fleming and Harrington 1991, Therneau and Grambsch 2000, Murray 2006, Fieberg and DelGiudice 2009). To estimate bobwhite hazard rates, we left-censored individuals if they entered the population after our initial

time interval (1 October) and right-censored individuals if their fate was unknown (Johnson et al. 2004). We also censored individuals that did not survive the first seven days after they were released to control for any effects of capture myopathy (Guthery and Lusk 2004).

Our dataset consisted of 26 time intervals, which were the number of weeks during the non-breeding season (1 October – 31 March). To estimate the effects of anthropogenic features on bobwhite survival, we estimated the mean weekly Euclidean distance (m) to a feature for each individual. This consisted of distance to: oil/gas structures, buildings, and the four different road types (county road, primary WMA roads, restricted access WMA roads [truck and all-terrain vehicle {ATV} traffic], and restricted access WMA roads [ATV traffic only]). We included both functioning and non-functioning oil/gas structures in our analysis as we were primarily interested in responses to the structure (and associated roads) rather than actual activity. Only 6% of oil/gas structures within our study units were considered non-functioning. Furthermore, there were no new oil/gas structures developed during the course of our study, and direct human activity related to oil/gas development was limited to periodic maintenance checks throughout the year. All oil/gas structure locations used in our study consisted of pumpjacks, condensate tanks and meter stations and were within 15 m in height. Spatial oil/gas structure data were obtained through the Oklahoma Corporation Commission in 2013 and were verified through ground-truthing efforts. County road data were obtained from the Oklahoma Department of Transportation (<<http://okmaps.org/ogi/search.aspx>>), while buildings and all other road data were hand digitized and confirmed via ground-truthing. To determine if the presence of hunting affected survival in our population, we also included a categorical variable based on the unit in which an individual occurred. Other categorical variables included in our analysis were age (adult or juvenile) and year (2012–2013 (year 1), 2013–2014 (year 2) and 2014–2015 (year 3)). Sex (male or female) of individuals was not included as a covariate in our survival analysis as we expected no difference in harvest rates (Shupe et al. 1990) or survival (Cox et al. 2004, Seckinger et al. 2008, Tanner et al. 2012) between sexes for the nonbreeding season.

The primary assumption of the AG model, like the CPHM, is that hazards from covariates are proportional over time (Johnson et al. 2004). To test this assumption, we plotted Schoenfeld residuals and assessed significant deviances of residual plots from 0 (Therneau et al. 1990, Fox 2002). We stratified our third road category (restricted access roads [truck and ATV traffic]) values into three distance categories (< 500 m, 500–1499 m, and ≥ 1500 m) as this variable did not meet the proportional hazard assumption (Fox 2002). Finally, we included a global model in our survival analysis, which included the additive effects of all variables of interest.

We used Akaike's information criterion adjusted for small sample sizes (AIC_c) to rank models relating covariates to hazard rates for bobwhite over the non-breeding season. We considered models with a $\Delta AIC_c \leq 2$ to be plausible models and determined those to be the most parsimonious based on model weights (w_i) and ΔAIC_c values (Burnham and Anderson 2002). We built models that we found biologically meaningful or models that specifically addressed our

research questions. We considered parameters with hazard ratios that had 95% confidence intervals overlapping one to be statistically uninformative to our survival analysis. This is because a hazard ratio of one indicates no difference in proportional hazards (Fox 2002).

Resource utilization functions

We used resource utilization functions (RUFs; Marzluff et al. 2004, Millsbaugh et al. 2006) to estimate the relationships between covey space use and environmental variables. We estimated RUFs for coveys rather than individuals as space use by individuals within coveys has been shown to be non-independent (Janke and Gates 2013, Brooke et al. 2015). We estimated 95% fixed-kernel densities (Worton 1989, Seaman et al. 1999) for coveys having ≥ 30 radio-telemetry locations during the hunting season (Seaman and Powell 1996, Seaman et al. 1999, Lohr et al. 2011) using the geospatial modelling environment (GME; Spatial Ecology LLC, USA). A likelihood cross-validation bandwidth estimator was used to obtain kernel density estimates (KDE), which has been shown to outperform other bandwidth estimators when sample sizes are small (Horne and Garton 2006).

Along with the anthropogenic variables included in our survival analysis, we also incorporated vegetation cover types and theoretical hunting pressure variables into our RUF analysis. As we did not have a direct measure of hunting pressure within our hunting unit over the course of the study, we incorporated hunter behavior data discussed in Richardson et al. (2008) to estimate areas of potentially high, medium, low, and no hunting pressure. The data presented by Richardson et al. (2008) incorporated vegetation cover, distance from roads (< 500 m, 500–< 1500 m, 1500–< 2500 m, and ≥ 2500 m), and % slope ($\leq 3\%$ and $> 3\%$) data and used GPS data from hunters at Packsaddle WMA (Ellis County, Oklahoma, USA) to determine selection indices in specific areas by bobwhite hunters (Supplementary material Appendix 1 Table A1). They separated slope categories so that both categories contained $\sim 50\%$ of the WMA (Richardson 2006). We used these data to model potential hunting pressure on our study site because road density (Packsaddle WMA: 1.86 km/km², Dunkin et al. 2009; Beaver River WMA 2.12 km/km²) and slope (< 3% slope: 50.76% of the area; > 3% slope: 49.24% of the area) were similar between WMAs. We incorporated these data into a model of theoretical hunting pressure on our study site through the use of the weighted overlay tool in ArcGIS 10.2. Taking into consideration the selection indices of hunters provided by Richardson et al. (2008), we used vegetation cover, distance from roads, and % slope in our model, with each variable having equal weight. We assigned values (1–4) to each category within these variables, where one represented the highest level of theoretical hunting pressure and four represented the lowest. Table 1 shows the values assigned to all categories within our variables and Supplementary material Appendix 1 Fig. A2 shows the spatially explicit theoretical hunting pressure model for the hunted unit during our study.

We extracted values for space use and all environmental variables to points centered on every cell within each covey's home range. Cells in our analysis consisted of a square 10 m spatial resolution. We used the RUF package in

Table 1. Variable weights¹ and assigned values given to vegetation cover types, distance from road categories, and slope (%) categories in estimating potential hunting pressure for northern bobwhite across the hunted unit of Beaver River WMA, Beaver County, Oklahoma, USA, 2012–2015. Values were derived from data presented by Richardson et al. (2008) where 1 represents the highest potential hunting pressure and 4 represents the lowest, and were incorporated into a weighted overlay analysis in ArcGIS 10.2.

Variable	Assigned value
Vegetation cover class	
Sand sagebrush	1
Mixed shrub	2
Mixed grass	2
Shortgrass/yucca	2
Exposed soil/sparse vegetation	3
Bare ground	3
Food plot	3
Salt cedar	4
Distance from roads (m)	
< 500	1
500–< 1500	2
1500–< 2500	3
≥ 2500	4
Slope (%)	
≤ 3	1
> 3	2

¹All three variables received equal (33.33%) weights in the weighted overlay analysis.

program R (ver. 3.1.1) to estimate coefficients of resource use for each variable and for every covey. Our response variable (utilization distribution) was right skewed, thus all values of space use were log-transformed (Hooten et al. 2013, Winder et al. 2014). Because vegetation cover type and theoretical hunting pressure were categorical variables, we removed a class in each variable to serve as a reference class in our analysis (Jachowski et al. 2014). Therefore, we used the sand sagebrush cover type and the highest level of theoretical hunting pressure as the reference class for the vegetation cover and hunting pressure variables, respectively. The sand sagebrush class was used as a reference because it is the most abundant vegetation type on our study site (Jachowski et al. 2014). To directly address the question of whether bobwhite were altering their space use in relation to higher hunting pressure, we used the highest theoretical hunting pressure class as a reference class to compare bobwhite space use in relation to other hunting pressure categories. Mean standardized β coefficients ($\bar{\beta}$) and conservative estimates of variance were calculated for each environmental variable to estimate overall population responses to these variables across the hunted and non-hunted units (Marzluff et al. 2004). Standardized coefficients with 95% confidence intervals overlapping 0 were considered non-significant. Finally, we estimated the number of individual coveys that had significant positive, negative, or non-significant relationships to our environmental variables to indicate differences among coveys. We were unable to evaluate all levels of theoretical hunting pressure (high, medium, low, or no pressure) for 10 coveys. As such, low hunting pressure and no hunting pressure variables were not contained within the KDEs for all possible coveys in our analysis and population level β estimates were limited to the coveys that encountered these variables (Jachowski et al. 2014).

Movement analysis

To compare estimates of covey movement across hunted and non-hunted units, we calculated a conservative estimate of average daily movement across the non-breeding season for coveys with ≥ 10 locations (Brøseth and Pedersen 2010). Coveys with ≥ 10 locations, rather than those with ≥ 30 locations, were used in movement analysis because we were not estimating KDEs for this stage of our analysis. We conservatively estimated average daily movement to be the Euclidean distance between a covey's locations across consecutive days (Williams et al. 2000, Brøseth and Pedersen 2010, Lohr et al. 2011, Unger et al. 2012), which we considered an index of daily movement patterns. The time between daily consecutive locations varied from 24 h, thus this metric was considered an index of average daily movement rather than true average daily movement. The median time between covey locations for average daily movement estimates were 25.07 h (range: 24 to 32.22 h), 25.5 h (range: 24 to 34.45 h), and 24.27 h (range: 24 to 29.13 h) for the 2012–2013, 2013–2014 and 2014–2015 hunting seasons, respectively. Because the time between consecutive covey locations varied from 24 h, we included velocity as the dependent variable in our movement analysis to account for this variability. Thus, velocity was considered a proxy for the conservative estimate of average daily movement. Linear mixed effect models (Pinheiro and Bates 2000) were used to assess the influence of hunted/non-hunted units, years, week time, and all possible additive and interactive combinations between these variables on covey movement (Brøseth and Pedersen 2010). To meet the assumption of data normality, we used a Box–Cox transformation (Box and Cox 1964) approach to determine the most appropriate transformation for our movement data. Based on this approach, we used $x^{0.106}$ to transform our data. Covey identity was included as a random effect to account for interdependence of movement data within each covey (Brøseth and Pedersen 2010). We used an AIC_c approach, and used model weights (w_i) and a $\Delta AIC_c \leq 2$ to determine the most parsimonious model (Burnham and Anderson 2002). Finally, we used a restricted maximum likelihood (REML) approach to obtain parameter estimates for fixed effects in our models (Brøseth and Pedersen 2010) and considered any parameters with 95%

confidence intervals overlapping 0 to be non-significant in explaining average daily movement between coveys.

Results

A total of 85, 62 and 45 bobwhite were alive and actively monitored at the beginning of the hunting season in 2012–2013, 2013–2014 and 2014–2015, respectively. However, because we trapped periodically throughout the non-breeding season on both units, a total of 225, 190 and 142 bobwhite were captured and radio-collared during the 2012–2013, 2013–2014 and 2014–2015 non-breeding seasons, respectively. This resulted in a total of 59, 62 and 42 unique bobwhite coveys during the 2012–2013, 2013–2014 and 2014–2015 non-breeding seasons, respectively. A total of 15 and 13 unique coveys with ≥ 30 locations (the minimum sample size for space use analysis) were located on the hunted and non-hunted units during the hunting season, respectively.

Bobwhite survival

After censoring individuals, a total of 475 bobwhite were included in our survival analysis. This resulted in 192 (72 adults and 120 juveniles), 164 (74 adults and 90 juveniles) and 119 (69 adults and 50 juveniles) individuals during the 2012–2013, 2013–2014 and 2014–2015 non-breeding seasons respectively. A total of 342 (149 adults and 193 juveniles) and 133 (66 adults and 67 juveniles) individuals were located on the hunted and non-hunted units, respectively. For adults, mortalities were categorized as 28% mammalian, 25% unknown, 23% avian, 5% harvested and 1% other. For juveniles, mortalities were categorized as 30% mammalian, 18% avian, 16% unknown, 2% harvested and 1% other. Collar failures (slipped collars or dead batteries) accounted for 18% and 33% of bobwhite losses in adults and juveniles, respectively.

Based on AIC_c values, the global model was the most parsimonious model when explaining bobwhite survival in relation to anthropogenic features and disturbance during the non-breeding season (Table 2). However, of the variables in this model, only two were considered significant.

Table 2. Model selection of Andersen–Gill hazard models of survival for northern bobwhite during the non-breeding season at Beaver River WMA, Beaver County, Oklahoma, 2012–2015.

Model ¹	K	AIC_c	ΔAIC_c	w_i	Deviance
Global	12	1454.74	0	0.43	-716.32
Year	3	1456.5	1.77	0.18	-726.25
Year + Age + Unit	5	1457.5	2.77	0.11	-724.74
Primary WMA roads	2	1458.78	4.04	0.06	-728.39
Age	2	1458.86	4.12	0.05	-728.43
Oil/gas structures	2	1459.3	4.56	0.04	-728.65
Null	1	1459.63	4.89	0.04	-729.81
All roads	6	1460.07	5.33	0.03	-725.02
Primary WMA ² roads \times Unit + Age	5	1461.05	6.31	0.02	-726.52
Unit	2	1461.21	6.47	0.02	-729.6
Buildings	2	1461.45	6.72	0.01	-729.73
All anthropogenic features	8	1461.62	6.88	0.01	-723.79

¹Models with anthropogenic variables are distance (m) metrics (i.e. distance to primary WMA roads).

²Wildlife management area.

These included an effect for the second year season (year two season hazard rate [HR] = 0.55, 95% confidence interval [CI] = 0.34 to 0.87) and distance to primary WMA roads (HR = 1.0008, 95% CI = 1.0003 to 1.0013). Individuals alive during the year two non-breeding season were 45% less likely to experience mortality compared to birds during the year one non-breeding season, while they were only 10% less likely to experience mortality when compared to individuals alive during the year three non-breeding season (Fig. 1A; year three season HR = 0.65, 95% CI = 0.38 to 1.11). Finally, every 10 m decrease in distance from primary WMA roads was associated with a 0.08% increase in probability of mortality.

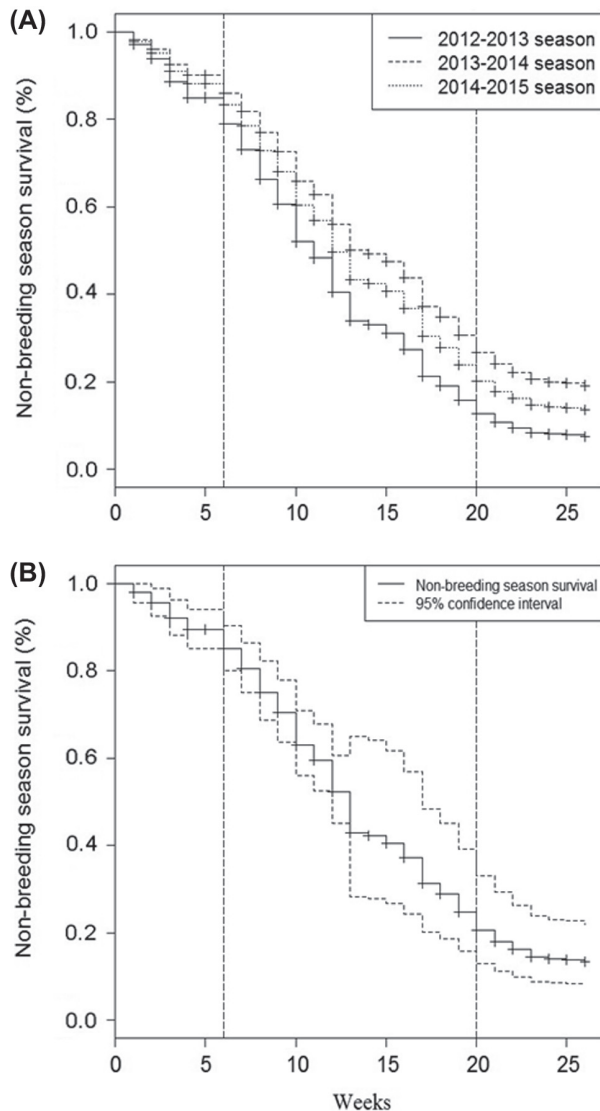


Figure 1. Northern bobwhite *Colinus virginianus* non-breeding season survival as determined from Andersen–Gill hazard models. Survival curves are separated by year (A) and our overall best performing model (B) for bobwhite on Beaver River WMA, Beaver County, Oklahoma, USA, 2012–2015. Week numbers correspond to the non-breeding season beginning on 1 October of each year. Vertical lines indicate the beginning and end of the quail hunting season in Oklahoma. Survival curves: panel (A): $n = 192$, 164 and 119 bobwhite for the 2012–2013, 2013–2014 and 2014–2015 seasons, respectively; panel (B): $n = 475$ bobwhite.

There were no differences in survival for individuals on hunted versus non-hunted units in our top model (non-hunted HR = 0.81, 95% CI = 0.49 to 1.35) nor in our model selection results (unit model $\Delta AIC_c = 6.47$). Furthermore, based on our hazard rate curves, there is no indication that once the hunting season started, hazard rates for birds increased significantly (Fig. 1B). However, survival did consistently decrease across weeks for both hunted and non-hunted units during the non-breeding season with ~20% of individuals surviving through the season (Fig. 1B).

Covey resource selection

Across all three years, a total of 28 coveys representing 62 radio-marked birds were used in estimating RUFs where locations occurred only during the quail hunting season. In general, there was little difference in space use of hunted versus non-hunted coveys in relation to our variables of interest. Furthermore, a majority of the variables included in our analysis had a non-significant relationship to covey space use based on (β) estimates with 95% confidence intervals that overlapped 0 (Table 3). Of all the variables analyzed, only the exposed soil/sparse vegetation and bare ground cover classes had significant differences between hunted and non-hunted coveys (Table 3) when compared to use of sand sagebrush. Coveys on the hunted unit significantly avoided the exposed soil/sparse vegetation cover type ($(\beta) = -0.01$, 95% CI = -0.02 to -0.002) and bare ground ($(\beta) = -0.01$, 95% CI = -0.02 to -0.002) when compared to non-hunted coveys. However, if pooled across all coveys (both hunted and non-hunted coveys), these relationships were not considered significant (exposed soil/sparse vegetation pooled (β) = -0.005 , 95% CI = -0.012 to 0.002; bare ground pooled (β) = -0.003 , 95% CI = -0.012 to 0.005).

Covey movement

There were no differences in covey average daily movement between hunted and non-hunted units across all three seasons during our study (hunted unit $\beta = 0.002$, 95% CI = -0.01 to 0.03; non-hunted unit $\beta = -0.01$, 95% CI = -0.03 to 0.01). Time-related variables (week and year) were the best explanatory variables included in our analysis (Table 4). However, the parameter estimate for the week variable ($\beta = 0.001$, 95% CI = $-<0.001$ to 0.002) was not significantly different from 0 and thus was not considered a strong explanatory variable for covey average daily movement. When compared to year one, only year three was significantly different based on 95% confidence intervals ($\beta = -0.03$, 95% CI = -0.05 to -0.01), indicating that average daily movement for coveys during year three was lower than years one and two.

Discussion

We were unable to detect any evidence that the presence of oil/gas structures or buildings increased the risk of mortality or affected space use of bobwhite coveys regardless of hunting pressure. However, risk of mortality increased as the distance between coveys and primary WMA roads decreased.

Table 3. Mean standardized resource utilization function coefficients ($\bar{\beta}$)¹, lower and upper 95% confidence intervals (LCI and UCI), and number of coveys with positive (+), negative (-), or non-significant (ns) β values indicating the relationship of space use to distance to anthropogenic features (m), theoretical hunting pressure², and vegetation cover types³. Data is provided for northern bobwhite coveys during the quail hunting season⁴ (2012–2015) on hunted and non-hunted units of Beaver River Wildlife Management Area, Beaver County, Oklahoma, USA.

Variable	Hunted						Non-hunted							
	n	Beta	LCI	UCI	+	-	ns	n	Beta	LCI	UCI	+	-	ns
Medium hunting pressure	15	0.02	-0.003	0.04	3	1	11	-	-	-	-	-	-	-
Low hunting pressure	5	0.01	-0.01	0.03	0	0	5	-	-	-	-	-	-	-
No hunting pressure (safety zones)	5	0.02	-0.11	0.15	2	2	1	-	-	-	-	-	-	-
Distance to buildings	15	-0.73	-1.94	0.47	5	5	5	13	-0.23	-1.01	0.56	4	6	3
Distance to oil/gas structures	15	0.04	-0.27	0.34	6	6	3	13	-0.15	-0.49	0.2	7	4	2
Distance to county roads	15	0.33	-0.26	0.92	5	5	5	13	-0.18	-0.78	0.41	5	4	4
Distance to primary WMA roads	15	0.15	-0.35	0.65	6	5	4	13	-0.08	-0.33	0.18	3	6	4
Distance to restricted (truck/ATV) WMA roads	15	0.04	-0.19	0.27	7	5	3	13	-0.36	-0.86	0.13	2	7	4
Distance to restricted (ATV only) WMA roads	15	-0.22	-0.80	0.35	4	6	5	13	-0.23	-0.58	0.12	3	3	7
Mixed shrub	15	-0.003	-0.02	0.01	0	0	15	13	0.008	-0.003	0.02	1	0	12
Mixed grass	15	-0.002	-0.01	0.01	0	0	15	13	-0.01	-0.03	0.005	0	1	12
Shortgrass/yucca	15	-0.004	-0.02	0.01	0	1	14	13	0.01	-0.005	0.02	0	0	13
Exposed soil/sparse vegetation	15	-0.01	-0.02	-0.002	0	1	14	13	0.003	-0.006	0.01	1	0	12
Bare ground	15	-0.01	-0.02	-0.002	0	1	14	13	0.01	-0.01	0.02	1	0	12

¹95% confidence intervals were estimated based on conservative standard errors that include inter-animal variation (Marzluff et al. 2004).

²Variable coefficients are relative to bobwhite covey space use in areas of highest theoretical hunting pressure.

³Variable coefficients are relative to bobwhite covey space use in sand sagebrush.

⁴The Oklahoma quail hunting season began on 10, 9 and 8 November in 2012, 2013 and 2014 respectively and ended on 15 February during all three years.

Yet this relationship was not different between hunted and non-hunted units. Furthermore, bobwhite coveys did not select areas categorized with lower theoretical hunting pressure when compared to areas with higher theoretical hunting pressure, and distance-based variables related to anthropogenic features had no significant effect on covey space use for either hunted or non-hunted units. Finally, bobwhite on the hunted unit did avoid exposed soil/sparse vegetation and bare ground more than expected when compared to birds on the non-hunted unit. However, significant relationships of survival and space use to anthropogenic features and vegetation were weak overall.

Understanding the influence of anthropogenic development in landscapes is becoming increasingly important as energy development continues to expand. For some

ground-nesting birds there are documented negative behavioral responses to this development (Hovick et al. 2014, Winder et al. 2014). However, neutral effects of space use by bobwhite in relation to anthropogenic features have previously been demonstrated in similar vegetation communities (Dunkin et al. 2009). Our data further support that bobwhite are not negatively responding to the presence of anthropogenic features based on space use and movement patterns. It is evident that bobwhite have some level of tolerance to anthropogenic features based on use of these features throughout the year (Errington and Hamerstrom 1936, Rosene 1969, Dunkin et al. 2009, Unger et al. 2012, 2015). Yet, if usable space is a measure of an area's potential to sustain bobwhite populations (Guthery 1997), at some density these anthropogenic features will eventually

Table 4. Akaike information criterion (AIC) model selection results of mixed effect models¹ explaining effects of time (week), year, and hunting (unit) on average daily movement of northern bobwhite during the non-breeding season 2012–2015 on Beaver River WMA, Beaver County, Oklahoma.

Model	K	AIC _c	AIC _c	wi	Deviance
Intercept + Week + Year	6	-898.07	0	0.21	455.12
Intercept + Week + Year + Unit + Week × Year	9	-897.81	0.26	0.19	458.1
Global	14	-897.79	0.28	0.18	463.35
Intercept + Week + Year + Unit + Year × Unit	9	-897.69	0.38	0.17	458.04
Intercept + Year	5	-896.67	1.4	0.1	453.4
Intercept + Week + Year + Unit	7	-896.01	2.06	0.08	455.12
Intercept + Year + Unit	6	-894.62	3.45	0.04	453.4
Intercept + Week + Year + Unit + Week × Unit	8	-893.95	4.11	0.03	455.13
Intercept + Week	4	-882.95	15.11	0	445.52
Null	3	-882.6	15.47	0	444.32
Intercept + Week + Unit	5	-882.15	15.91	0	446.14
Intercept + Week × Unit	4	-881.4	16.67	0	444.74
Intercept + Unit	5	-881.29	16.78	0	445.71

¹Covey identity was included as a random effect in all models.

negatively impact the amount of usable space (Masden et al. 2009, Pruett et al. 2009). As an example, oil and gas well development in North America ultimately results in a loss of vegetation cover in an area (Allred et al. 2015). High densities of oil/gas wells have been shown to negatively affect space use of other upland gamebirds such as greater sage-grouse *Centrocercus urophasianus* (~3.125 wells/km², Doherty et al. 2008) and lesser prairie-chicken *Tympanuchus pallidicinctus* (10 wells/km² Plumb 2015). It is possible that we, along with Dunkin et al. (2009), did not detect an overwhelmingly negative response of space use by bobwhite to such features because feature densities were relatively low throughout our study sites. Furthermore, we may have not detected a response because our data were restricted to the post-construction period. Other Galliformes have changed space use patterns from pre- to post-construction periods (Winder et al. 2014, 2015). Thus, bobwhite research with a before–after control–impact (BACI) design would be beneficial in understanding if shifts in space use do occur post-construction.

Beyond differences in survival between years, the average weekly distance (m) to primary WMA roads was significant in explaining non-breeding season survival during our study. The increased risk of mortality associated with these primary WMA roads could be attributed to an increase in exposure to meso-predators which often use these roads as travel corridors (Frey and Conover 2006). Other causes for this relationship may be related to collisions with vehicle traffic when approaching these primary roads (Connelly et al. 2000, Erickson et al. 2005). However, we expect this is unlikely on our site as only one bird was suspected of vehicle collision mortality and because traffic was generally limited to researchers, hunters, and occasional commercial traffic related to energy production. Our results describing changes in survival related to distance from primary roads should be viewed with caution. It is unlikely that this relationship is biologically meaningful based on low hazard rates and the lack of support for this metric in other competing models (Table 2). For instance, based on the estimated hazard rate, a bobwhite located 1000 m from a primary road would only have a 8% increase in survival when compared to a bobwhite located directly next to the road.

We predicted that if the presence of anthropogenic features increased the risk of harvest mortality for bobwhite, an interactive relationship would exist between these features and the study units (hunted versus non-hunted). Yet, our model including the interaction between distance to primary WMA roads and unit was not considered a plausible model ($\Delta AIC = 6.31$; Table 2). Furthermore, the singular model with the unit variable was also a poor performing model, and we could not determine any difference in survival between our hunted and non-hunted individuals. Bobwhite have been shown to be attracted to roads during both breeding and non-breeding seasons (Dunkin et al. 2009, Brooke et al. 2015, Unger et al. 2015) while quail hunters also tend to hunt in areas ≤ 1500 m from roads (Richardson et al. 2008). Therefore, if hunting were to have a significant effect on bobwhite survival on our study site, we would expect this interactive term to be significant with a larger effect size on our hunting unit. The lack of support for the interactive effect between distance to primary WMA roads and hunting

units could be attributed to a low amount of hunting pressure on our study site. Quail hunter numbers and hunting pressure tend to decrease as quail densities decrease (Guthery et al. 2004a, b, Tomeček et al. 2015). Based on August and October quail roadside surveys conducted by the Oklahoma Dept of Wildlife Conservation (ODWC), 2012, 2013 and 2014 quail numbers were down 70%, 72.5% and 5% respectively compared to 25 year averages in northwest Oklahoma (ODWC unpubl.). If hunter numbers followed the trend of quail densities, hunting pressure should have been greatest during the 2014–2015 hunting season. However, 2013–2014 non-breeding season survival was the highest during our study, when quail densities were estimated the lowest by roadside surveys within the northwest Oklahoma region. All indications from ODWC staff on site indicate that hunting pressure was in fact low but present throughout the study period (W. R. Storer pers. comm.).

As discussed earlier, the interactive effects of energy development and hunting pressure on game species are poorly understood (Northrup and Wittemyer 2013). Our research represents an important initial attempt to quantify any potential compounding influences of anthropogenic development and hunting pressure on a popular North American game species. However, there are some limitations to our research and future studies should consider these limitations when further addressing this subject. For instance, the coarse scale temporal and spatial resolution of our data may have resulted in our lack of ability to detect any relationship. Other game species exhibit unique behavioral and space use patterns in response to hunting pressure at fine spatio-temporal scales (Cleveland et al. 2012, Ordiz et al. 2012, Stillfried et al. 2015). Advances in field techniques and technology will likely allow future bobwhite research to overcome this limitation. Another limitation of our research is that the hunting pressure data were strictly theoretical. Although this is an important limitation, the implications of our research are not exclusively reliant on the results from the theoretical hunting pressure model. All other analyses (survival, space use, and movement patterns) also supported our findings. However, future research in this field should look to empirically monitor hunting pressure within areas with varying levels of development to better understand if and when there is an interaction between anthropogenic development and hunting pressure on game species' ecology. Finally, as mentioned previously, research with a BACI design would help to determine if any post-construction effects do exist for bobwhite populations.

It is evident based on our results that there is some amount of slack (Guthery 1999; defined as different patch configurations that can lead to fully usable space) in bobwhite requirements on our study site related to anthropogenic features, as covey space use was not restricted to avoidance patterns of these features during the non-breeding season. However, there is likely a threshold in which anthropogenic features and/or disturbance will begin to negatively influence bobwhite space use and survival. Negative impacts of anthropogenic features on bobwhite have been shown in populations occupying areas with higher urban and industrial development (Lohr et al. 2011). The lack of significance of bobwhite response during our study should be considered within the context of the low anthropogenic feature density

and large amount of usable space across our study site. However, consideration of faunal response to these features should be given beyond just a single species, as bobwhite may be more resilient to lower densities of these features. The presence of many anthropogenic features (such as oil/gas structures) are known to alter behavioral patterns of songbirds which can potentially increase predatory exposure (Machtans 2006, Francis et al. 2011). Furthermore, other Galliformes are known to respond negatively to these structures (Hovick et al. 2014), thus implications of introducing anthropogenic features across a landscape should consider the full suite of species that occupy the landscape. Despite the broader implications, it appears that bobwhite are resilient to anthropogenic development as long as adequate vegetation exists on the landscape.

Implications

Relatively low levels of harvest pressure appear to have no negative impact on bobwhite populations, as illustrated by our results. We were also not able to provide evidence that anthropogenic features increased hunting pressure across our study site. However, primary WMA roads appeared to increase mortality risk due to some unknown cause. We emphasize that low densities of anthropogenic features such as roads and oil/gas structures are compatible with bobwhite management within the context of landscapes already providing large areas of usable space. However, negative compounding impacts related to interactions between anthropogenic features and hunting pressure may exist in other regions with higher densities of developed features or higher levels of hunting pressure within the bobwhite distribution. Future studies should seek to empirically quantify hunting pressure to determine if there is a threshold in which these potential compounding impacts begin to negatively influence a population. As Williams et al. (2004) discussed, regional efforts should be made to assess whether anthropogenic development may be increasing hunting pressure so that harvest management is scaled appropriately based on local landscape configuration.

Acknowledgements – We thank W. R. Storer and C. E. Crisswell (ODWC), fellow graduate student J. M. Carroll, and our field technicians for their logistical support during our field research. Also, we thank V. L. Winder and J. Fieberg for analytical assistance at various stages of our research.

Funding – Funding was provided by the Pittman-Robertson Federal Aid to Wildlife Restoration Act under project W-161-R (F11AF00069) of the Oklahoma Department of Wildlife Conservation and Oklahoma State University, administered through the Oklahoma Cooperative Fish and Wildlife Research Unit (Oklahoma Department of Wildlife Conservation, Oklahoma State University, U.S. Geological Survey, U. S. Fish and Wildlife Service, and the Wildlife Management Institute cooperating), with support from the Oklahoma Agricultural Experiment Station at Oklahoma State University. Furthermore, this material is based on work partially supported by the National Science Foundation under grant no. OIA-1301789.

Permits – All trapping and handling methods were approved by the Oklahoma State University's Institutional Animal Care and Use Committee Permit (no. AG-11-22).

References

- Allred, B. W. et al. 2015. Ecosystem services lost to oil and gas in North America. – *Science* 348: 401–402.
- Andersen, P. K. and Gill, R. D. 1982. Cox's regression model for counting processes: a large sample study. – *Ann. Stat.* 10: 1100–1120.
- Arnett, E. B. et al. 2007. Impacts of wind energy facilities on wildlife and wildlife habitat. – *Wildl. Soc. Tech. Rev.* 07-2. Wildlife Society, Bethesda, MD, USA.
- Askins, R. A. et al. 2007. Conservation of grassland birds in North America: understanding ecological processes in different regions: "Report of the AOU Committee on Conservation". – *Ornithol. Monogr.* 64.
- Barber, J. R. et al. 2010. The costs of chronic noise exposure for terrestrial organisms. – *Trends Ecol. Evol.* 25: 180–189.
- Blickley, J. L. et al. 2012. Experimental evidence for the effects of chronic anthropogenic noise on abundance of greater sage-grouse at leks. – *Conserv. Biol.* 26: 461–471.
- Box, G. E. P. and Cox, D. R. 1964. An analysis of transformations (with discussion). – *J. R. Stat. Soc. B* 26: 211–252.
- Braun, C. E. et al. 2002. Oil and gas development in western North America: effects on sagebrush steppe avifauna with particular emphasis on sage grouse. – *N. Am. Wildl. Nat. Resour. Conf.* 67: 337–349.
- Brock, F. V. et al. 1995. The Oklahoma Mesonet, a technical overview. – *J. Atmos. Oceanic Tech.* 12: 5–19.
- Brooke, J. M. et al. 2015. Habitat manipulation influences northern bobwhite resource selection on a reclaimed surface mine. – *J. Wildl. Manage.* 79: 1264–1276.
- Brøseth, H. and Pedersen, H. C. 2010. Disturbance effects of hunting activity in a willow ptarmigan *Lagopus lagopus* population. – *Wildl. Biol.* 16: 241–248.
- Burnham, K. P. and Anderson, D. R. 2002. Model selection and inference: a practical information-theoretic approach. – Springer.
- Cleveland, S. M. et al. 2012. Linking elk movement and resource selection to hunting pressure in a heterogeneous landscape. – *Wildl. Soc. Bull.* 36: 658–668.
- Connelly, J. W. et al. 2000. Effects of predation and hunting on adult sage grouse *Centrocercus urophasianus* in Idaho. – *Wildl. Biol.* 6: 227–232.
- Cox, S. A. et al. 2004. Survival and cause-specific mortality of northern bobwhites in western Oklahoma. – *J. Wildl. Manage.* 68: 663–671.
- Doherty, K. E. et al. 2008. Greater sage-grouse winter habitat selection and energy development. – *J. Wildl. Manage.* 72: 187–195.
- Dunkin, S. W. et al. 2009. Influence of anthropogenic structures on northern bobwhite space use in western Oklahoma. – *J. Wildl. Manage.* 73: 253–259.
- Erickson, W. P. et al. 2005. A summary and comparison of bird mortality from anthropogenic causes with an emphasis on collisions. – *USDA For. Serv. Gen. Tech. Rep.* PSW-GTR-191.
- Errington, P. L. and Hamerstrom, F. N. 1936. The northern bobwhite's winter territory. – *Iowa State College Agric. Exp. Stn Res. Bull.* 201: 301–443.
- Fieberg, J. and DelGiudice, G. D. 2009. What time is it? Choice of time origin and scale in extended proportional hazard models. – *Ecology* 90: 1687–1697.
- Fleming, T. and Harrington, D. 1991. Counting processes and survival analysis. – Wiley.
- Fox, J. 2002. Cox proportional-hazards regression for survival data. – In: Fox, J. (ed.), *An R and S-plus companion to applied regression*. Sage Publ., pp. 1–20.
- Francis, C. D. et al. 2011. Different behavioral responses to anthropogenic noise by two closely related passerine birds. – *Biol. Lett.* 7: 850–852.

- Frey, S. N. and Conover, M. R. 2006. Habitat use by meso-predators in a corridor environment. – *J. Wildl. Manage.* 70: 1111–1118.
- Gilbert, M. M. and Chalfoun, A. D. 2011. Energy development affects populations of sagebrush songbirds in Wyoming. – *J. Wildl. Manage.* 75: 816–824.
- Guthery, F. S. 1997. A philosophy of habitat management for northern bobwhites. – *J. Wildl. Manage.* 61: 291–301.
- Guthery, F. S. 1999. Slack in the configuration of habitat patches for northern bobwhites. – *J. Wildl. Manage.* 63: 245–250.
- Guthery, F. S. and Lusk, J. J. 2004. Radiotelemetry studies: are we radio-handicapping northern bobwhites? – *Wildl. Soc. Bull.* 32: 194–201.
- Guthery, F. S. et al. 2004a. Effects of bag limits on bobwhite hunters and harvest. – *J. Wildl. Manage.* 68: 1095–1103.
- Guthery, F. S. et al. 2004b. Multistate analysis of fixed, liberal regulations in quail harvest management. – *J. Wildl. Manage.* 68: 1104–1113.
- Hagen, C. A. et al. 2011. Impact of anthropogenic features on habitat use by lesser prairie-chickens. – In: Sandercock, B. K. et al. (eds), *Ecology, conservation and management of grouse*. Univ. of California Press, pp. 63–75.
- Hooten, M. B. et al. 2013. Reconciling resource utilization and resource selection functions. – *J. Anim. Ecol.* 82: 1146–1154.
- Horne, J. S. and Garton, E. O. 2006. Likelihood cross-validation versus least squares cross-validation for choosing the smoothing parameter in kernel home-range analysis. – *J. Wildl. Manage.* 70: 641–648.
- Hovick, T. J. et al. 2014. Evidence of negative effects of anthropogenic structures on wildlife: a review of grouse survival and behavior. – *J. Appl. Ecol.* 51: 1680–1689.
- Jachowski, D. S. et al. 2014. Space use and resource selection by foraging Indiana bats at the northern edge of their distribution. – *Endanger. Species Res.* 24: 149–157.
- Janke, A. K. and Gates, R. J. 2013. Home range and habitat selection of northern bobwhite coveys in an agricultural landscape. – *J. Wildl. Manage.* 77: 405–413.
- Johnson, C. J. et al. 2004. Modeling survival: application of the Andersen–Gill model to Yellowstone grizzly bears. – *J. Wildl. Manage.* 68: 966–978.
- Johnson, K. and Lefebvre, B. 2013. U.S. approves expanded gas exports. – *Wall Street J.* 18 May:A1.
- Kunz, T. H. et al. 2007. Ecological impacts of wind energy development on bats: questions, research needs, and hypotheses. – *Front. Ecol. Environ.* 5: 315–324.
- Kuvlesky Jr., W. P. et al. 2007. Wind energy development and wildlife conservation: challenges and opportunities. – *J. Wildl. Manage.* 71: 2487–2498.
- Lebeau, C. W. et al. 2014. Short-term impacts of wind energy development on greater sage-grouse fitness. – *J. Wildl. Manage.* 78: 522–530.
- Lohr, M. et al. 2011. Life on the edge: northern bobwhite ecology at the northern periphery of their range. – *J. Wildl. Manage.* 75: 52–60.
- Loss, S. R. 2016. Avian interactions with energy infrastructure in the context of other anthropogenic threats. – *Condor* 118: 424–432.
- Loss, S. R. et al. 2013. Estimate of bird collision mortality at wind facilities in the contiguous United States. – *Biol. Conserv.* 168: 201–209.
- Ludlow, S. M. et al. 2015. Oil and natural gas development has mixed effects on the density and reproductive success of grassland songbirds. – *Condor* 117: 64–75.
- Machtans, C. S. 2006. Songbird response to seismic lines in the western boreal forest: a manipulative experiment. – *Can. J. Zool.* 84: 1421–1430.
- Manning, R. 1995. *Grassland: the history, biology, politics and promise of the American prairie*. – Viking, NY, USA.
- Marzluff, J. M. et al. 2004. Relating resources to a probabilistic measure of space use: forest fragments and Stellar's jays. – *Ecology* 85: 1411–1427.
- Masden, E. A. et al. 2009. Barriers to movement: impacts of wind farms on migrating birds. – *ICES J. Main Sci.* 66: 746–753.
- McDonald, R. I. et al. 2009. Energy sprawl or energy efficiency: climate policy impacts on natural habitat for the United States of America. – *PLoS ONE* 4: e6802.
- McPherson, R. A. et al. 2007. Statewide monitoring of the mesoscale environment: a technical update on the Oklahoma Mesonet. – *J. Atmos. Oceanic Tech.* 24: 301–321.
- Millsbaugh, J. J. et al. 2006. Analysis of resource selection using utilization distributions. – *J. Wildl. Manage.* 70: 384–395.
- Murray, D. L. 2006. On improving telemetry-based survival estimation. – *J. Wildl. Manage.* 70: 1530–1543.
- Mutter, M. et al. 2015. Evaluating the impact of gas extraction infrastructure on the occupancy of sagebrush-obligate songbirds. – *Ecol. Appl.* 25: 1175–1186.
- Northrup, J. M. and Wittemyer, G. 2013. Characterizing the impacts of emerging energy development on wildlife, with an eye towards mitigation. – *Ecol. Lett.* 16: 112–125.
- Ordiz, A. et al. 2012. Do bears know they are being hunted? – *Biol. Conserv.* 152: 21–28.
- Pimm, S. L. and Raven, P. 2000. Biodiversity: extinction by numbers. – *Nature* 403: 843–845.
- Pinheiro, J. C. and Bates, D. M. 2000. *Mixed-effects models in S and S-Plus*. – Springer.
- Pitman, J. C. et al. 2005. Location and success of lesser prairie-chicken nests in relation to vegetation and human disturbance. – *J. Wildl. Manage.* 69: 1259–1269.
- Plumb, R. T. 2015. Lesser prairie-chicken movement, space use, survival, and response to anthropogenic structures in Kansas and Colorado. – PhD thesis, Kansas State Univ.
- Pollock, K. H. et al. 1989. Survival analysis in telemetry studies: the staggered entry design. – *J. Wildl. Manage.* 53: 7–15.
- Pruett, C. L. et al. 2009. Avoidance behavior by prairie grouse: implications for development of wind energy. – *Conserv. Biol.* 23: 1253–1259.
- Richardson, J. L. 2006. Comparison of cover selection by bobwhite quail and quail hunters in western Oklahoma. – PhD thesis, Oklahoma State Univ.
- Richardson, J. L. et al. 2008. Cover selection by northern bobwhites and hunter on a public-hunting area. – *Proc. Annu. Conf. Southeastern Ass. Fish Wildlife Agencies* 62: 46–50.
- Roseberry, J. L. 1979. Bobwhite population responses to exploitation: real and simulated. – *J. Wildl. Manage.* 28: 285–305.
- Rosene, W. 1969. *The bobwhite quail: its life and management*. – Rutgers Univ. Press.
- Samson, F. and Knopf, F. L. 1994. Prairie conservation in North America. – *BioScience* 44: 418–421.
- Sauer J. R. et al. 2014. *The North American Breeding Bird Survey, results and Analysis 1966–2013, ver. 01.30.2015*. – USGS Patuxent Wildl. Res. Center, Laurel, MD, USA.
- Seaman, D. E. and Powell, R. A. 1996. An evaluation of the accuracy of kernel density estimators for home range analysis. – *Ecology* 77: 2075–2085.
- Seaman, D. E. et al. 1999. Effects of sample size on kernel home range estimates. – *J. Wildl. Manage.* 63: 739–747.
- Seckinger, E. M. et al. 2008. Effects of landscape composition on winter survival of northern bobwhites. – *J. Wildl. Manage.* 72: 959–969.
- Shannon, G. et al. 2016. A synthesis of two decades of research documenting the effects of noise on wildlife. – *Biol. Rev.* 91: 982–1005.
- Shupe, T. E. et al. 1990. Vulnerability of bobwhite sex and age classes to harvest. – *Wildl. Soc. Bull.* 18: 24–26.

- Slater, S. J. and Smith, J. P. 2010. Effectiveness of raptor perch deterrents on an electrical transmission line in southwestern Wyoming. – *J. Wildl. Manage.* 74: 1080–1088.
- Souther, S. et al. 2014. Biotic impacts of energy development from shale: research priorities and knowledge gaps. – *Front. Ecol. Environ.* 12: 330–338.
- Stillfried, M. et al. 2015. When top predators become prey: black bears alter movement behaviour in response to hunting pressure. – *Behav. Process.* 120: 30–39.
- Stoddard, H. L. 1931. The bobwhite quail: its habits, preservation and increase. – Charles Scibner's Sons, New York, NY, USA.
- Storch, I. 2007. Grouse: status, survey and conservation action plan 2006–2010. – IUCN and Fordingbridge, UK, World Pheasant Association, Gland, Switzerland.
- Swaddle, J. P. et al. 2015. A framework to assess evolutionary responses to anthropogenic light and sound. – *Trends Ecol. Evol.* 30: 550–560.
- Tanner, E. P. et al. 2012. Survival of radio-marked versus leg-banded northern bobwhite in Kentucky. – *Proc. Natl Quail Symp.* 7: 212–216.
- Tanner, E. P. et al. 2015. Behavioral responses at distribution extremes: how artificial surface water can affect quail movement patterns. – *Rangeland Ecol. Manage.* 68: 476–484.
- Therneau, T. M. and Grambsch, P. M. 2000. Modeling survival data: extending the Cox model. – Springer.
- Therneau, T. M. et al. 1990. Martingale-based residuals for survival models. – *Biometrika* 77: 147–160.
- Tomeček, J. M. et al. 2015. Quail abundance, hunter effort, and harvest of two Texas quail species: implications for hunting management. – *Wildl. Biol.* 21: 303–311.
- Unger, A. M. et al. 2012. Northern bobwhite survival related to movement on a reclaimed surface coal mine. – *Proc. Natl Quail Symp.* 7: 223–228.
- Unger, A. M. et al. 2015. Northern bobwhite seasonal habitat selection on a reclaimed surface coal mine in Kentucky. – *J. Southeastern Ass. Fish Wildl. Agencies* 2: 235–246.
- White, G. C. and Garrot, R. A. 1990. Analysis of wildlife radio-tracking data. – Academic Press.
- Williams, C. K. et al. 2000. Habitat use and survival of northern bobwhite (*Colinus virginianus*) in cropland and rangeland ecosystems during the hunting season. – *Can. J. Zool.* 78: 1562–1566.
- Williams, C. K. et al. 2004. The northern bobwhite decline: scaling our management for the twenty-first century. – *Wildl. Soc. Bull.* 32: 861–869.
- Winder, V. L. et al. 2014. Space use by female greater prairie-chickens in response to wind energy development. – *Ecosphere* 5:art3.
- Winder, V. L. et al. 2015. Responses of male greater prairie-chickens to wind energy development. – *Condor* 117: 284–296.
- Worton, B. J. 1989. Kernel methods for estimating the utilization distribution in home-range studies. – *Ecology* 70: 164–168.

Supplementary material (available online as Appendix wlb-00254 at <www.wildlifebiology.org/appendix/wlb-00254>). Appendix 1.